

# KIMBALL & VICTORIA STERLING

SPRING CANE COLLECTION

SATURDAY, APRIL 21, 2012  
11:00 A.M. EASTERN



KIMBALL M. STERLING, INC.  
TFL-1915

# TERMS & CONDITIONS

1. Cash or check. A 20% buyers' premium will be added to the hammer price as part of the sale price for all bidders. We reserved the right to hold purchases until the buyers checks clears if buyer is not known by us. Bank letter of credit is acceptable.

2. Mail or phone bids are accepted; the firm may require a deposit.

3. Kimball M. Sterling, Inc. has endeavored to catalog and describe the property correctly. All property is sold as is and neither the auction company nor the consignor will be responsible for descriptions, genuineness, provenance or condition of the property. No statement in the catalog made orally at the sale or otherwise shall be deemed to be a warranty, representation, or an assumption of liability.

4. In the event of any dispute between bidders, the auctioneer shall have total discretion to determine the successful bidder, in which his determination shall be final or to re-offer and resale the article in dispute. Title of the item or items purchased by the bidder will pass at the fall of the gavel and declaration of bidder. This is not an approval auction. All measurements are approximate.

5. Principal auctioneer: Kimball M. Sterling #2467. B. Elizabeth Sterling, auctioneer # 5757. Firm Kimball M Sterling Inc. TFL-1915

6. Bidders may bid live on the Internet by visiting <http://www.auctionauction.com> You may also view the auction at this site and bid by phone.

7. Communications:  
Telephone 423-928-1471.  
Fax 423-928-2816.  
Cellular 423-773-4073, 423-773-4072.  
Email [kimballsterling@earthlink.net](mailto:kimballsterling@earthlink.net)

8. Kimball M Sterling has worldwide shipping available. Mr. Mark Winter handles all of the CITES permits for the buyers. After payment is received we will ship your purchases to him for your permitting. You will deal directly with him on the permits and shipping. We will charge a few to ship your canes to him. We do not ship endangered items in-house.

9. Kimball M. Sterling, Inc. will not be held responsible for bids received on the day of the auction, unexecuted absentee bids, phone bidders not contacted or slow Internet bids. Although we do attempt to get all bids executed problems do occur. There will be no recourse from the bidder. We will not be responsible for items left on our location for over 30 days.

10. Sale will be conducted at 125 West Market Street, Johnson City, Tennessee. 37604. Announcements day of the sale take precedence over pre-sale advertising. Any litigation that pertains to this auction will be conducted in the county of Washington in Tennessee and is agreed upon by registering for this auction.

11. Airport is the Tri-Cities Airport, which is approximately 20 miles from the gallery. Internet catalog and live bidding available at [www.auctionauction.com](http://www.auctionauction.com) Best Western Hotel: 423-282-2126. A very fine hotel which offers Sterling Auction a discount rate is the Carnegie Hotel 1216 W State of Franklin Rd, (423) 979-6400.

12. Please call for condition report on sale lots or email us. We do send out multiple photos by email of any lot in the auction. By registering for this auction you accept the terms.

13. Parking service is free.

# **KIMBALL & VICTORIA STERLING**

## **SPRING CANE COLLECTION**

**SATURDAY, APRIL 21, 2012  
11:00 A.M. EASTERN**

**PREVIEW FRIDAY, APRIL 20, 2012  
NOON - 5:00 P.M. AND THE MORNING  
OF THE AUCTION**



Kimball M. Sterling Auction Gallery  
125 West Market Street  
Johnson City, Tennessee 37601  
kimballsterling @ earthlink.net  
423.928.1471

Live on the internet at  
[LIVEAUCTIONEERS.COM](http://LIVEAUCTIONEERS.COM)  
Two Time Winner of Best of Show  
from the National Auctioneers Association

**1. Meissen Porcelain Dress Cane**

Circa 1890-Royal cobalt blue ball with two gallant scenes with gold moriage, beaded and gilt metal collars, ebonized shaft and a horn ferrule. H. 5 3/4" x 1 3/4", O.L. 38"  
**\$900-\$1,500**

1.



**2. Ivory Snake Cane**

19th Century- Large pistol-shaped handle with a coiled snake and rodent, belt buckle collar, ebony shaft and 2 3/4" tall ivory ferrule. H. 8 1/2" x 3 1/4", O.L. 34 1/2"  
**\$2,500-\$3,500**

**3. Ivory Dress Cane**

19th Century-German L-shaped high relief ivory handle with an allegorical composition, ebony shaft with a 2 3/4" tall ivory ferrule. H. 5 1/2" x 3 3/4", O.L. 33 1/4"  
**\$1,000-\$1,500**

2.



3.





4.



#### 4. French Black Man Hardstone Mascot Cane

Late 19th Century. Black onyx knob carved to depict a Black Man's head, snakewood shaft with a jeweled metal collar and a metal ferrule. This cane is an accomplished example of exceedingly rare type which came into fashion with the impact of Carl Faberge. It was made for the lofty elite of the Fin de Siècle.

H. 2 1/4" x 1 3/4", O.L. 38 1/2"

**\$2,000-\$3,000**

6.



#### 5. Brigg Gold Dress Cane

Birmingham hallmarked 1861- 18 karat yellow gold knob engraved "H.T.W. "BEST MAN" 25th JULY 1887" on a honey malacca shaft with a horn ferrule. H. 2 1/4" x 1 1/4", O.L. 37"

**\$1,000-\$1,600**

#### 6. Ram Ivory Cane

Late 19th Century- A substantial ram head with large horns and big eyes on an ebony shaft embellished with ivory dot inlay and an ivory ferrule. H. 4 1/2" x 3 3/4", O.L. 38"

**\$2,000-\$3,000**

5.



**7. Shibayama Ivory Dress Cane**

Late 19th Century- This Japanese straight and tapering turned handle has flowering twigs, bamboo plants, insects and birds which are masterfully carved and decorated with 24 karat gold lacquer and semi-precious gem stones inlay, ebony shaft with a brass ferrule. H. 9  $\frac{3}{4}$ " x  $\frac{3}{4}$ ", O.L. 39  $\frac{1}{4}$ "  
**\$2,000-\$3,000**

7.



**8. Japanese Ivory Rat Cane**

Late 19th Century-A precise carved knob done in a master's hand, tortoiseshell inlay in the eyes, honey malacca shaft and a metal ferrule. H. 1  $\frac{3}{4}$ " x 1  $\frac{1}{4}$ ", O.L. 32"  
**\$1,200-\$1,600**

8.



**9. Figural Horse Gold Cane**

Circa 1880-An 18 karat yellow gold handle modeled as horse head with a very finely engraved surface and plain collar with various hallmarks on an ebony shaft with a metal ferrule. H. 3  $\frac{1}{4}$ " x 2  $\frac{1}{2}$ ", O.L. 36  $\frac{1}{4}$ "  
**\$1,200-\$2,000**

9.





11.



**10. Horse Hoof Silver Cane**

English, circa 1890-Finely chased and engraved horse hoof on a substantial plinth of Gothic inspiration, rosewood shaft and a horn ferrule.

H. 3" x 1 1/2", O.L. 37 1/2"

**\$500-\$800**

**11. Gold Dress Presentation Cane**

Circa 1885-A substantial gold filled Opera handle with the usual ornate decoration and an oval shield engraved with the initials "G.R.S.". Ebony shaft and a white metal ferrule. H. 4 1/2" x 2 1/2", O.L. 36 1/4"

**\$500-\$700**

12.



**12. Ivory Horse Cane**

19th Century-L-shaped and curving ivory horse handle with an elaborate silver collar, ebony shaft and a horn ferrule.

H 4" x 3 1/2", O.L. 36"

**\$1,500-\$2,000**

**13. Corkscrew cane**

Mid. 19th Century-This cane is fashioned of an early sailor made corkscrew from the marine world and a pepper bamboo shaft with a white metal collar and brass ferrule. The corkscrew is removable and consists of a sperm whale tooth handle carved to depict an eagle's head with an attached steel helix.

H. 5" x 4", O.L. 36"

**\$1,500 - \$2,000**

13.



10.



#### 14. Nautical Cane

Circa 1880-Large whale tooth handle carved to depict a whale with a short stem, ebony shaft and a long ivory ferrule. The whale is beautifully integrated in the natural shape of the tooth and is whaler's art its best.

H. 5 ½" x 2", O.L. 34"

**\$2,000-\$2,500**

14.



#### 15. Snuff Tobacco Cane

London hallmarks 1895-Silver handle with a hinged and spring operated flipping top and built in a snuff container with an ebony and ivory lid. The handle is finely engraved and personalized with the initials of its first owner and comes on a smooth partridge shaft with a horn ferrule.

H. 2 ¾" x 1 ¼", O.L. 33"

**\$1,200-\$1,800**

15.



#### 16. Globe Ivory Cane

English, 19th Century- Terrestrial globe cane accurately carved . The globe comes on an oak shaft with a 5 in. tall iron ferrule. Tradition has it that this cane belonged to John Red, a British sailor from Liverpool with a long marine career on the "Red Jacket" (A famous clipper ship, one of the largest and fastest ever built) who took great pride going ashore with his cane made of timber of the Red Jacket. The story goes on to say that he retired when the clipper was driven ashore in a gale in 1885 and his fate wanted him to continue his life in the textile business. He stretched his cane with an iron pipe from the Red Jacket to make of it a one yard long textile ruler. H. 2" x 2", O.L. 39 ½"

**\$1,600-\$2,000**

16.







17.

### 17. Figural Hardstone Cane

Circa 1890- Muddy green jasper hippopotamus head on a malacca shaft with a braided silver wire collar and a white metal ferrule. The joyous flair of the amphibious animal is accented by the eyes with ruby cabochons on the roof of the skull. This one-of-a-kind cane is in the Fabergé Russian Style and belongs to the upscale jewelry Objects of Virtue.

H. 1  $\frac{3}{4}$ " x 3", O.L. 35  $\frac{3}{4}$ "

**\$6,000-\$8,000**

### 18. Ivory Fish Cane

19th Century- Large and striking ivory handle carved to depict a vertical fish topped by a grooved knob, malacca shaft and an ivory ferrule. One-of-a-kind. H. 6  $\frac{1}{2}$ " x 1  $\frac{3}{4}$ ", O.L. 37  $\frac{1}{2}$ " \$2,000-\$3,000

19. Ivory Bear Cane - 19th Century-A large ivory bear and ball handle, pepper bamboo shaft with a plain silver collar and metal ferrule. A great and fine naturalistic carving and probably made to order to the lofty Russian elite of the Imperial period.

H. 3  $\frac{3}{4}$ " x 3  $\frac{1}{4}$ ", O.L. 38  $\frac{1}{2}$ "

**\$2500-\$3,500**



19.



### 19. Ivory Bear Cane

19th Century-A large ivory bear and ball handle, pepper bamboo shaft with a plain silver collar and metal ferrule. A great and fine naturalistic carving and probably made to order to the lofty Russian elite of the Imperial period. H. 3  $\frac{3}{4}$ " x 3  $\frac{1}{4}$ ", O.L. 38  $\frac{1}{2}$ "

**\$2500-\$3,500**

18.

**20. Toledo Dress Cane**

Circa 1885-A remarkable crook steel handle with 24 karat dense Arabesques gold inlay, snakewood shaft and a gilt metal ferrule.

H. 4 ¼" x 4", O.L. 35 ½"

**\$900-\$1,200**

**21. Lapis Lazuli Dress Cane**

Early 20th Century-Lapis Lazuli ball knob of an intense natural blue color with white veins and gold dust, gilt collar, ebony shaft and a horn ferrule.

H. 1 ¾" x 1 ¾", O.L. 37 ¾"

**\$500-\$800**

**22. Art Nouveau Ivory Cane**

Circa 1890-A large ivory portrait of a beauty, long hair in the best Art Nouveau tradition where the woman is the central stimulation. Oak shaft with silver inlay and an ivory ferrule.

H. 4 ¾" x 1 ¾", O.L. 36"

**\$3,000-\$4,000**

**23. Silver Art Nouveau Cane**

Late 19th Century-Large Opera silver handle hand chased and engraved on both sides with different sprays of lilies of the valley.

H. 4" x 3", O.L. 35 ½"

**\$500-\$700**



22.



23.



20.



21.







**24.**

**24. Art Nouveau Figural Cane**

Late 19th Century-Elephant ivory handle carved to depict a female dancer, malacca shaft and a silver collar with obscured London hallmarks.

H. 3 ½" x 3 ¼", O.L. 37"

**\$2,000- \$3,000**

**25. All Ivory Art Nouveau Cane**

Late 19th Century-Substantial ivory cane turned with tapering segments and topped by a matching handle carved with birds and butterflies. H. 5 ¾" x 1 ¾", O.L. 36 ½"

**\$1,800-\$2,800**

**26. French Silver Court Cane**

Late 18th Century-Longer, cylindrical silver cap chased in high relief with foliage and scrolls and ornate at the top with a Roman Emperor. Malacca shaft with elaborate silver eyelets and a horn ferrule. Pristine condition.

H. 3 ¼" x 1 ¼", O.L. 41"

**\$700-\$1,200**



**25.**



**26.**



**27. Ivory Bear and Vine Cane**

19th Century-A very fine carved ivory clamping bear on a one piece vine shaft and a staghorn ferrule, most likely Russian O.L. 34 1/4"

**\$1,800-\$2,500**

**28. Figural Hardstone Dress Cane**

Late 19th Century-Large T-shaped grey agate handle with a ram and horse head, respectively tiny ruby and sapphire eyes. Trailing laurel leaf silver collar-band, ebony shaft and a metal ferrule. Sophisticated cane.

H. 4" x 2 1/2", O.L. 37"

**\$4,000-\$5,000**

**29. Red Jasper Dress Cane**

Circa 1920- Brick red Milord knob with crystallized natural grey veins, ebony shaft with a metal collar and a horn ferrule. Striking color.

H. 3 1/2" x 1 1/4", O.L. 37 3/4"

**\$600-\$800**

**30. Gold Dress Cane**

19th Century-Substantial and well chased and engraved 18 karat yellow gold knob on a stepped partridge shaft with a wrap gold collar with hallmarks and metal ferrule.

H. 1 1/2" x 1 1/2", O.L. 34 3/4"

**\$800-\$1,200**

28.



27.



30.



29.



34.

31.



### 31. Ivory & Oak Dog Cane

Late 19th Century-Ivory handle with a wooden dog head at the front on a live oak branch shaft freed from its bark and fitted with a white metal collar and brass ferrule. H. 5" x 1 1/2", O.L. 35 1/4"

**\$1,000-\$1,500**

### 32. Ivory Lion Cane

19th Century-Large L-shaped ivory handle carved with a prone lion, honey malacca shaft with a turned ivory collar and horn ferrule. H. 4 1/4" x 1 3/4", O.L. 34"

**\$1,200-\$1,800**

### 33. Silver Dress Cane

19th Century- Opera silver handle, cast and finely chased with a Maenad on one side and a shield on the other, both within rich and framing flowers compositions. Ebony shaft and a metal ferrule. Unreadable hallmarks.

H. 4" x 2 1/2", O.L. 33 1/4"

**\$700-\$900**

### 34. French All Ivory Cane

19th Century-The cane is made of 10 individually turned substantial segments piled on a steel core to imitate natural bamboo and fitted with an ivory ball knob and a metal ferrule. Floral lacquer painted surface in the Japanese style.

H. 1 1/2" x 1 1/2", O.L. 36"

**\$1,600-\$2,600**



32.



33.





**35. Memento Mori Skull Cane**

19th Century-Substantial, pistol shaped walrus ivory handle with a skull, ebony shaft with a white metal collar and worn white metal ferrule. H. 5 ¼" x 3", O.L. 37 ¼"

**\$1,500-\$2,000**

35.



**36. Ivory Monkey Cane**

19th Century. Large squatting ivory monkey naturalistically carved with fine detail, malacca shaft and an ivory ferrule. Attractive large size and well-aged. H. 4" x 1 ¾", O.L. 37"

**\$1,800-\$2,800**

37.

**37. French Ivory Erotic Cane**

Circa 1895-Ball and stem ivory knob with the bust of a beauty on one side and her intimate parts on the other, ebony shaft and metal ferrule. H. 2 ¾" x 2", O.L. 33 ½"

**\$1,200-\$1,800**



**38. Portuguese Silver Dress Cane**

Late 19th Century- Opera shaped handle chased and engraved with different flower panels on each side, rosewood shaft and a horn ferrule. H. 3 ¾" x 2 ½", O.L. 36 ¼"

**\$600-\$900**

38.



36.







39.

40.

**39. French Erotic Nude Cane**

Late 19th Century-A large ivory Art Nouveau handle finely carved to depict a Venus showing all her charms, malacca shaft and a brass ferrule. H. 5 ¼" x 3 ¼", O.L. 35 ¼" \$4,000-\$6,000

**40. Dieppe Ivory Cane**

Circa 1880- Long French Louis XVI ivory handle, ebony shaft, and a metal ferrule. H. 9 ½" x 1", O.L. 37 ½" \$600-\$800



**41. Ivory Swan Cane**

19th Century-Substantial and well carved handle showing a gracious aquatic bird on reeds with three cygnets between the wings, well dressed malacca shaft and a metal ferrule.

H. 4" x 2 12", O.L. 36 1/4"

**\$2,000-\$3,000**

**41.**



**42. Ivory Dress Cane**

Late 19th Century-Long and tapering ivory handle carved in relief, ebony shaft with a beaded ivory collar and an ebony ferrule. H. 8 3/4" x 1", O.L. 35 1/4"

**\$600-\$800**

**43. Russian Piqué Dress Cane**

Ca. 1880- Two piece holly wood cane with a substantial knob densely set on its upper part with hundreds of silver wire and dot inlay. Upscale example and with all its adornments and a long horn ferrule. H. 1 3/4" x 1 1/2", O.L. 36 1/2"

**\$800-\$1,000**

**43.**



**44. French Ivory Badine Cane**

Circa 1900- Long ivory handle carved with floral and topped by a plain ball, makassar ebony shaft and an ivory ferrule. H. 9" x 1 1/4", O.L. 34 1/2"

**\$300-\$400**

**42.**



**44.**

**45. Tula Silver Dress Cane**

Circa 1900- L-shaped Tula silver handle with a curving hand rest and alternating bright and dark ribbons, German hallmarks and engraved "CW" initials. Ebony shaft and a metal ferrule. H. 4 1/4" x 2 1/2", O.L. 34 1/2"

**\$600-\$900**

**45.**



47.



46.



**46. Heliotrope Dress Cane**

Early 20th Century-Straight jasper handle of striking variegated structure and mixed colors with a chased metal collar and ebony shaft with a horn ferrule.

H. 2 ½" x 1", O.L. 36 ½"

**\$600-\$900**

**47. All Ivory Parade Cane**

Anglo-Indian, Vizagapatam 19th Century. Segmented ivory cane fashioned of fine grained and bright Asian material and densely decorated in blue and fuchsia colors with the usual circle and dot pattern. Plain horizontal handle and turned ferrule. The cane unscrews for storage. H. 3 ½" x 1", O.L. 33 ¼"

**\$800 - \$1,200**

49.



**48. Art Nouveau Dress Cane**

Early 1900-Gutta Percha and white metal Opera handle, ebonized shaft and a brass ferrule.

H. 3 ¾" x 3 ½", O.L. 36 ½"

**\$400-\$500**

48.



**49. Ivory Badine**

Circa 1900-Long ivory handle imitating bamboo and topped by a plain ball, ebony shaft and a brass ferrule. H. 6 ¼" x 1", O.L. 35 ½"

**\$200-\$300**

50.



**50. Silver Dress Cane**

Late 19th Century-Large Derby silver handle hand chased and engraved in the Baroque style with scrolls on each side.

H. 4 ½" x 2 ¾", O.L. 36 ¾"

**\$400-\$600**



**51. Ivory and Silver Dress Cane**

Late 19th Century—An ivory handle with four bands of sterling, signed sterling collar, exotic wood shaft and a horn ferrule. H. 4" x 1 ¼", O.L. 35 ½"  
**\$350-\$450**

**52. Porcelain Dress Cane**

Circa 1880—A hand painted porcelain handle, ornate gold filled collar, square snakewood shaft and a horn ferrule. H. 1 ½" x ½", O.L. 35 ½"  
**\$400-\$600**

**53. Mystical Silver Dress**

Early 20th Century—A silver ball with two stylized faces, signed sterling fluted collar, exotic wood shaft and a horn ferrule. H. 1 ½" x 2", O.L. 36 ½"  
**\$400-\$700**

**54. Ivory Horse Hoof Cane**

Circa 1900—Nicely carved leg and hoof, British hallmarked silver collar, faux bamboo exotic wood shaft and a horn ferrule. H. 3 ½" x 1 ¼", O.L. 34 ½"  
**\$500-\$600**

**55. Stylized Ivory Cane**

Circa 1890—Carved ivory handle done in the Art Nouveau style, signed sterling ornate collar, malacca shaft and a bi-metal ferrule. H. 5" x 1", O.L. 35 ¼"  
**\$500-\$600**

**56. Porcelain Portrait Dress Cane**

Circa 1900—A hand painted French style handle, small brass collar, substantial ebony shaft and a bi-metal ferrule. H. 2" x 1 ½", O.L. 35 ¼"  
**\$400-\$700**

52.



53.



51.



55.



54.



56.





57.



59.



60.



58.



61.



62.

### 57. Hardstone Dress Cane

Circa 1900-A 1 ½" x 1 ½" blue hard stone handle, ornate fluted gold-filled collar, ebony shaft and a bi-metal ferrule. O.L. 38 ¾"  
\$400-\$600

### 58. Key to Memphis Cane

Early 20th Century-A solid cast key with the impressions "Key to Memphis" and "Alchymia Temple", exotic hardwood shaft and a horn ferrule. H. 7 ½" x 3", O.L. 36"  
\$400-\$700

### 59. Horn and Dog Dress Cane

Circa 1900-Possibly molded Rhino, carved dog with two color glass eyes, British Hallmarked silver collar, exotic wood shaft and a bi-metal ferrule. H. 3 ¾" x 3", O.L. 31 ½"  
\$500-\$700

### 60. Ivory Nautical Cane

Circa 1860-A wheel carved whale's tooth handle, silver collar, a pair of coin silver eyelets, hexagonal to cylindrical exotic wood shaft and a horn ferrule. H. 1 ¾" x 1 ½", O.L. 34 ½"  
\$400-\$600

### 61. Horn and Silver Dress Cane

Late 19th Century-Possibly Rhino, a blend of horn and silver on a crutch handle which has a small unreadable touch mark, malacca shaft and no ferrule. H. 4" x 3", O.L. 34"  
\$500-\$700

### 62. Smoking System Stick Cane

Circa 1920-A British Hallmarked compartment silver handle containing a Hallmarked gold and MOP cigar holder, exotic wood shaft and a bi-metal ferrule. H. 3 ½" x ¾", O.L. 35 ½"  
\$500-\$700

**63. Erotic Comical Ivory  
Wrestlers Statue**

Circa 1850- An unusual  
Continental ivory statue with a  
nude man attempting to throw a  
nude lady over his shoulders. His  
hands are in private places and  
she is resisting the flip by holding  
tight to his manhood. This explicit  
museum quality carving has paid  
precise representation to all of the  
physical details. Take a good look at  
the faces as "the war goes on".  
(Detailed photos on the website)  
6" x 3"

**\$10,000-\$15,000**

**63.**





**64. Erotic Nun and Priest Ivory Cane**

Circa 1900—A whimsical large carving of a monk and his robe and a nun having a little boy and girl fun, ribbed silver collar, thick malacca shaft and a horn ferrule. Ft. Lauderdale Collection

H. 5" x 1 ½" x 2", O.L. 37"

**\$12,000–\$15,000**

**64.**



**65. Ivory Hitler Automation Cane**

Mid 20th Century-A unique carved likeness of Hitler with India Ink hair decoration and carving, by depressing the rear button his eyes go back into his head and his red tongue protrudes which has a Star of David carving, a wonderful anti-Hitler piece of memorabilia, fluted sterling collar, exotic wood shaft with silver attachments and a bi-metal ferrule. Ft. Lauderdale Collection  
H. 2 ½" x 3", O.L. 37"  
**\$6,000-\$8,000**



**66. Percussion Gun Cane**

Circa 1865-A unique American gun cane with checkering and engraving, forged removable barrel and a horn ferrule-H. 5" x 3 ½", O.L. 39 ½"  
**\$1,600-\$1,900**



**67. Scrimshaw Whaling Cane**

Mid 19th Century-A unique handle which is marked Salem with nautical and Masonic tools, atop there is a five pointed star, baleen spacers, carved whalebone shaft and a horn ferrule. H. 1 ½" x 2", O.L. 34"  
**\$2,500-\$3,000**

67.





71.



68.

#### 68. Toledo Sword Cane

Late 19th Century-A malacca crook handle with silver collars, a mint Toledo 27" blade which has a turn locking mechanism, malacca shaft and a metal ferrule.

H. 6" x 4 3/4", O.L. 35 1/2"

**\$500-\$900**



69.

#### 69. Sterling Charlie Chaplin Cane

Circa 1935-A most unique sterling casting of "The Tramp", hallmarked but unreadable thick ebony shaft and a bi-metal ferrule.

H. 2" x 1 1/2", O.L. 36"

**\$500-\$800**



70.

#### 70. Carved Ivory Lion Cane

Late 19th Century-A large carved ivory handle with two color glass eyes, signed sterling collar, symmetrical twig spur exotic shaft and a metal ferrule.

H. 4 1/2" x 1 7/8", O.L. 34 3/4"

**\$500-\$700**



72.

#### 71. Sterling Silver Bird Cane

Circa 1900-An exotic sterling bird handle by RFS & Co., small sterling collar, bamboo shaft and a bi-metal ferrule-H. 2 3/4" x 1 3/4", O.L. 35"

**\$300-\$500**

#### 72. Ivory Owl Cane

Early 20th Century-A detail carved ivory owl with two color glass eyes, fluted ivory pedestal collar, woven wire wrap collar, an American wild cherry shaft and a horn ferrule

H. 3 3/4" x 1 5/8", O.L. 36 1/2"

**\$1,200-\$1,500**



**73. Art Nouveau Dress Cane**

Circa 1895-A carved ivory handle with a incised sterling end cap, ribbed sterling collar, rich mahogany shaft and a horn ferrule.

H. 4 ¼" x 1 ½", O.L. 35 ½"

**\$350-\$450**



73.

**74. Asian Stag Frog Cane**

Circa 1890-A carved stag handle with a dog playing with a large bullfrog, no collar, exotic wood shaft and a painted ferrule.

H. 6" x 1 ¼", O.L. 36"

**\$600-\$800**



75.

**75. Victorian Whistle Stick**

Circa 1880-A plated naughty leg with a blow hole in the heel, natural deep toned bamboo shaft and a metal ferrule.

H. 3" x 2", O.L. 33"

**\$300-\$500**



76.

**76. Ivory Dog Cane**

Circa 1900-A carved ivory dog with two color glass eyes, engraved silver "Haverhill, Mass.", exotic wood shaft and a bi-metal ferrule.

H. 2" x 1 ¼", O.L. 32 ¼"

**\$300-\$400**



74.

**77. Masonic Dress Cane**

Circa 1900-An ornate gold filled handle with the Masonic emblem engraved atop, exotic wood shaft and a metal ferrule.

H. 2" x 1 ½", O.L. 34 ¼"

**\$250-\$400**



78.

**78. Ivory and Silver Dress Cane**

Circa 1900-A stylized ivory handle with a sterling end cap, signed sterling collar, exotic wood shaft and a bi-metal ferrule

H. 4 ½" x 1 ¼", O.L. 32 ½"

**\$300-\$500**



77.



#### 79. Ivory Shibayama Cane

Circa 1890—An unusual carving with two apes with painted eyes and MOP inlaid kimono, painted and inlaid floral work throughout, ornate gold filled collar, exotic wood shaft and an iron ferrule.

H. 5  $\frac{3}{4}$ " x 1", O.L. 35  $\frac{1}{2}$ "

**\$1,400–\$1,800**

#### 80. Silver and Ivory Dress Cane

Circa 1895—Carved ivory handle with a signed sterling ornate end cap, ornate sterling collar, exotic wood shaft and a metal ferrule.

H. 3  $\frac{3}{4}$ " x 1", O.L. 36"

**\$300–\$500**

#### 81. Sting Ray Tail/Shagreen Dress Cane

Mid 19th Century—A finely engraved hexagonal silver handle, attached silver barb, sting ray tail shaft and a metal ferrule.

H. 1  $\frac{1}{2}$ " x 1  $\frac{1}{2}$ ", O.L. 34  $\frac{1}{4}$ "

**\$1,500–\$2,200**

#### 82. Ivory Dog Dress Cane

Circa 1885—A carved ivory dog with a pair of black glass eyes, gold metal collar, thick snakewood shaft and a bi-metal ferrule.

H. 5" x 2", O.L. 36"

**\$500–\$800**



**83. Full Baleen Dress Cane**

Circa 1885-A molded and compressed baleen serpent handle done in unusual detail, small ivory collar, pair of coin silver eyelets, full baleen wrapped shaft and a bi-metal ferrule.

H. 3" x 3", O.L. 35"

**\$3,000-\$4,000**



83.

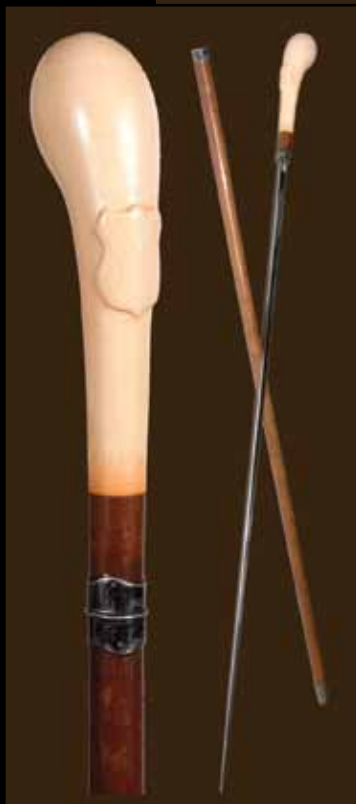
**84. Toledo Ivory Sword Cane**

Late 19th Century-A substantial ivory handle with a blank shield, pair of coin silver collars, locking signed 27" Toledo blade, maple shaft and a bi-metal ferrule-H.

5" x 1 3/4" Late 19th Century-A substantial ivory handle with a blank shield, pair of coin silver collars, locking signed 27" Toledo blade, maple shaft and a bi-metal ferrule. H. 5" x 1 3/4", O.L. 36"

**\$600-\$1,000**

84.



**85. Ivory Lion Cane**

Early 20th Century-A carved ivory lion, two color glass eyes, signed sterling collar, ebonized shaft and a bi-metal ferrule.

H. 4 1/2" x 1 7/8", O.L. 36"

**\$600-\$800**

**86. Ivory Lion Cane**

Circa 1900-A carved ivory lion with two color glass eyes, acceptable chips near the thumb rest, silver metal collar with engraving, ebonized shaft and a bi-metal ferrule.

H. 5" x 1 3/8", O.L. 34"

**\$350-\$500**



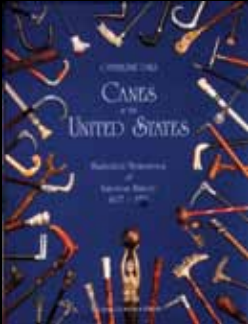
86.



85.



90.



89.



87.



88.



91.

### 87. Ivory Alligator Cane

Early 20th Century-A great detailed walrus ivory carving with black beaded eyes, long tail which reaches the entire length of the bottom of the handle, silver metal collar, ebony shaft and a bi-metal ferrule.

H. 4" x 1 7/8", O.L. 36"

**\$1,000-\$1,200**

### 88. Flag System Cane

Circa 1930-An restored original Madden N.R.A. member 11" x 15" parade stick, original flag and decal, shaft has been professionally restored and a stopper ferrule. O.L. 36"

**\$400-\$600**

### 89. Coxeyites Folk Art Cane

Dated 1898-This cane is carved with the name S. F. Neely (The Marshall of 100 Winchesters), he was a U.S. Marshal, physician and the Mayor of Leavenworth, KS., carved in high relief "U.S.M. S.F. Neely is Accumulating Money by Starving the Coxeyites", also picks, shovels, hammers, foliage, etc. carved throughout the shaft and no ferrule. Neely was the Wyatt Earp of the Marshals' during Coxes Army time in U. S. history. O.L. 35"

**\$700-\$1,200**

90. "Canes in the United States" by Catherine Dike- Used but not abused.

**\$200-\$300**

### 91. Art Nouveau Ivory Frog Cane

Circa 1900-A whimsical carved handle with three frogs setting on Lilly pads with a dragonfly, silver metal collar, exotic wood shaft and a bi-metal ferrule.

H. 4 1/2" x 1 1/2", O.L. 35 1/2"

**\$1,000-\$1,500**

**92. Large Ivory Dog Cane**

Circa 1900-An expertly carved ivory dog with a pair of large two color glass eyes, exaggerated mouth with teeth, white metal spike dog collar, painted twigspur shaft and a metal ferrule. H. 2 ¾" x 2 ½" x 2", O.L. 36"  
**\$1,200-\$1,400**

**93. Ivory Bull Dog Cane**

Early 20th Century-A detailed ivory bulldog with two color glass eyes, a triple collar including gold-filled ivory and rosewood, malacca shaft and a horn ferrule.  
H. 2" x 2" x 1 ¾", O.L. 35 ½"  
**\$1,000-\$1,200**

**94. Silver Dress Cane**

Early 20th Century-A "Solid Silver" cast handle, small silver collar, ebony shaft and a bi-metal ferrule-H. 3 ½" x 2 ½", O.L. 35 ½"  
**\$300-\$500**

**95. Early Sword Cane**

Circa 1840-A unique horn handle with a coin silver end and thumb plate, coin silver name plate engraved "Dr. Aln Gillespie, GtIenacla ?, Mass.", pushbutton locking mechanism, four sided 6 ½" gambler's dagger, coin silver collar, American oak thick shaft and an original 3 ¾" brass ferrule.  
H. 3 ½" x 4 ¾", O.L. 35 ½"  
**\$1,200-\$1,500**



93.



95.



94.



92.



97.

96.

**96. Amethyst Frog Head Cane**

Late 19th & 20th Century-A unique carved amethyst with what appears to be garnet eyes, contemporary to the shaft, signed sterling beaded collar, rich mahogany shaft and a bi-metal ferrule. H. 2" x 2", O.L. 36"

**\$800-\$1,200**

**97. Ivory Whippet/Greyhound Cane**

Circa 1925-A fully carved ivory handle with two color glass eyes, ornate gold metal collar, ebony shaft and a horn ferrule. H. 3 1/4" x 2 5/8", O.L. 36"

**\$800-\$1,000**

**98. Japanese Face Dress Cane**

Early 20th Century-A carved "1000 Face" African elephant handle with a inked cartouche, signed Brigg, London coin, silver collar, mahogany shaft and a horn ferrule. H. 1 3/4" x 1 1/4", O.L. 36"

**\$500-\$700**



99.



101.

**99. Tortoise Dress Cane**

Early 20th Century-A nice molded tortoise handle, gold-filled collar, orange wood shaft and a stag ferrule. H. 4 1/4" x 3 1/4", O.L. 36"

**\$500-\$600**

**100. Snakewood Crook Cane**

Circa 1925-An unusual one piece snakewood cane, signed sterling collar and a 3 1/2" bone ferrule. H. 4 3/4" x 3 1/2", O.L. 35 3/4"

**\$300-\$400**



98.



100.

**101. Dartmouth Indian Cane**

Early 20th Century-A nicely carved and detailed cane of this genre with various names on the shaft and a horn ferrule. H. 4" x 2 1/4", O.L. 36"

**\$200-\$300**



**102. Sterling Hugging Monkey Cane**

Late 20th Century-A custom silver casting from the workshop of Charles Daugherty, both monkeys have two color glass eyes, hallmarked by the maker and signed sterling, ebony shaft and a bi-metal ferrule.

H. 2" x 2 ¼", O.L. 36"

**\$500-\$700**



**103. Ivory Rabbit Cane**

Dated 1915-A fully carved ivory handle with six rabbits hiding in the bush, dated and engraved sterling collar, malacca shaft and a metal ferrule. H. 4 ¼" x 1 ½", O.L. 35 ½"

**\$1,500-\$2,000**



**104. Art Nouveau Silver and Ivory Cane**

Circa 1895-A carved ivory handle with silver overlay which has been done with great detail, ornate signed sterling collar, twispur shaft and a bi-metal ferrule. Some overlay work is worn due to being used as a thumb rest. H. 4 ½" x 1 ¾", O.L. 34"

**\$600-\$700**

**105. Exotic Ivory Flower Cane**

Circa 1860-A carved walrus ivory flower which is exotic but some might see it erotic, ornate silver metal collar, malacca shaft and a 4" brass ferrule. H. 3 ¼" x 1 ¼", O.L. 36"

**\$350-\$500**



**106. Gold Carriage Cane**

Late 18th Century-A nice vintage British carriage cane with maker's mark C.V. with expected dents and dings with a cane of this age, a pair of gold eyelets, a pair of gold studs, worn malacca shaft and a 3 ¼" brass ferrule. H. 1 ¼" x 1 ½", O.L. 41"

**\$800-\$1,200**





107.

111.



**107. Carrousel Horse Silver Cane**

Early 20th Century-A unique silver casting which appears to look much like and Dentzel, carousel horse, two unreadable touch marks but engraved with the name "Maxl", belt buckle collar, cherry shaft and a horn ferrule. H. 4 1/4" x 3", O.L. 34 1/4"

**\$600-\$800**

**108. Ivory Grey Hound Cane**

Early 20th Century-A British carved ivory dog with two color glass eyes, coin silver collar, marked coin with the maker's mark C.N., stepped hardwood shaft and a bi-metal ferrule. H. 4" x 1 1/4", O.L. 33 3/4"

**\$600-\$800**

**109. Art Deco Dress Cane**

Circa 1920-An American Gorham ivory and silver stylized Deco handle with full hallmarks, exotic wood shaft and a horn ferrule.

H. 4" x 2", O.L. 36 1/2"

**\$350-\$500**

**110. Rose Gold Dress Cane**

Early 20th Century-A stylized rose gold handle with dents and dings but probably \$500 or \$600 worth of gold, engraved collar, exotic wood shaft, bi-metal ferrule.

H. 4" x 1 3/4", O.L. 35"

**\$500-\$600**

**111. Ivory Dress Cane**

Circa 1885-An ivory straight handle, silver collar, twig spur shaft and no ferrule. H. 5" x 1", O.L. 33"

**\$200-\$300**



110.



108.



109.

**112. Gold-Filled Dress Cane**

Circa 1900-A stylized high relief handle, ebony shaft and a bi-metal ferrule. H. 2 ¼" x 1 ¾", O.L. 35"  
\$200-\$300



**113. Gold-Filled Dress**

Circa 1900-An engraved dress cane from "Bill Kennedy", ebony shaft and a bi-metal ferrule. H. 1" x 1 ¾", O.L. 34 ¼"  
\$200-\$300

**114. Gold-Filled Dress**

Dated 1881-An engraved Christmas present cane, ebony shaft and a bi-metal ferrule. H. 1 ¼" x 1 7/8", O.L. 35"  
\$200-\$300



**115. "The Mandel Cane Collection"**

by: Youssef Kadri-Mint condition.  
\$100-\$200

**116. "The Pearson Cane Collection"**

by: Youssef Kadri-Mint condition.  
\$100-\$200

**117. Capodimonte Cane Stand**

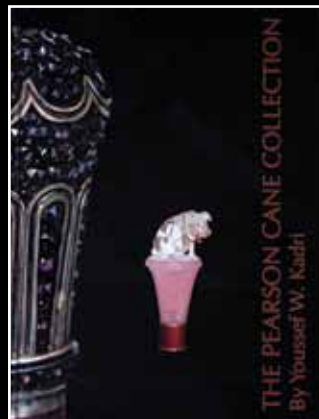
Circa 1930- An cane stand with good Italian and Capodimonte marks, two small flakes at the top rim, base has a few minor dings but overall great paint and finish. H. 22" x W. 11"  
\$500-\$1000

117.

116.



115.







121.

### 118. Walnut Fan Cane Stand

A contemporary custom built 12 hole cane stand with a professional museum finish. This stand is very upscale when canes are placed in the fan pattern. H. 30" x W. 32" x D. 7"  
\$600-\$1200



119.

### 119. Oak Curved Glass Cane Cabinet

Circa 1900- A 48 space lift front oak store display case, stepped riser, very ornate hinges, and working castors. H. 45" x W. 34" x D. 18"  
\$1,000-\$1,500

120.

### 120. Oscar Oken Walnut Curved Glass Cane Cabinet

Circa 1900- This case opens from the front, original Oken label, working castors, 48 spaces for canes. H. 47" x W. 23" x D. 18"  
\$1,000-\$2,000



### 121. Malacca Suitcase Cane

Circa 1925-A nice example of a five segment suitcase cane, signed sterling collar and a horn ferrule, original case. O.L. 36"  
\$400-\$550



122.

### 122. Ivory Knob Dress Cane

Circa 1800-A nicely carved ivory handle, silver collar, a pair of coin silver eyelets, malacca shaft and a 5 1/2" brass ferrule. H. 1 1/4" x 1 1/4", O.L. 34"  
\$600-\$700



118.

**123. Gold and Ivory Dress Cane**

Circa 1890-Ivory knob, signed 14kt collar, malacca shaft with a worn lower part and a horn ferrule.

H. 1 7/8 x 1 1/2", O.L. 35"

**\$500-\$600**

**123.**



**124. Gold Dress Cane**

Circa 1915-A nice malacca crook handle, dented gold end cap, 14kt signed collar, worn malacca shaft and a horn ferrule. O.L. 36"

**\$500-\$600**

**125.**



**125. Pewter Bumble Bee Cane**

Circa 1880-A finely cast handle with two girls and a bumble bee, pewter collar, ebonized shaft and no ferrule.

H. 4 1/2" x 2", O.L. 33"

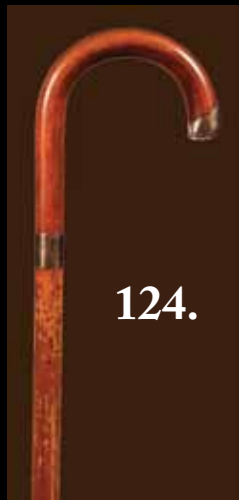
**\$400-\$500**

**126. Art Nouveau Silver Cane**

Circa 1895-A hallmarked but unreadable silver handle cast to look much like a flowing ribbon, silver metal collar, exotic wood shaft and a brass ferrule. H. 4 1/2" x 3 1/2", O.L. 38"

**\$600-\$700**

**124.**



**126.**



**127. Tiffany Gold Dress Cane**

Dated 1925-An exotic wood shaft and handle, signed Tiffany, 18kt gold end cap, and a 2" horn ferrule.

H. 4 1/2" x 3", O.L. 36"

**\$700-\$800**

**127.**



**128.**



**128. Tortoise Style Dress Cane**

Circa 1925-A beautiful compressed tortoise style shell dress cane, signed sterling collar, malacca shaft and a horn ferrule.

H. 4 1/2" x 3 1/2", O.L. 36"

**\$600-\$800**



129.

**129. Ebony Dog Cane**

Circa 1930-A large carved ebony dog with two color glass eyes, white metal collar, ebony shaft and a horn ferrule.  
H. 4" x 3 1/2", O.L. 36"

**\$700-\$800**



130.

**130. Huge Gold Filled Dress Cane**

Circa 1900-An enlarged gold filled "50th Anniversary", some wear to gold, and a horn ferrule.

H. 2 1/4" x 2 1/2", O.L. 34"

**\$500-\$600**

**131. Gold-Filled Dress Cane**

Early 20th Century-A nice handle with minimum wear, deep casting, ebonized shaft and a bi-metal ferrule.

H. 4 1/4" x 3", O.L. 36"

**\$400-\$500**

**132. Gold Dress Cane**

Circa 1920-A hollow cast gold handle, collar with unreadable maker's marks, exotic wood shaft and a bi-metal ferrule.

H. 1 1/2" x 1 1/2", O.L. 36"

**\$400-\$600**

**133. Ivory Dress Cane**

Dated 1883-A simple but appealing ivory handle, engraved rose gold-filled collar, malacca shaft and a long horn ferrule.

H. 3 1/2" x 1 3/4", O.L. 34"

**\$400-\$500**



131.



132.



133.



**134. Rococo Style Dress Cane**

Late 19th Century-Engraved silver handle, matching signed sterling ornate collar, exotic wood shaft and a bi-metal ferrule. H. 1" x 1 ½", O.L. 36"

**\$500-\$600**

**135. Document System Stick**

Circa 1885-An unusual burl handle with a signed sterling end cap white metal collar, unscrewing paint grained shaft, shaft was probably for documents and a 4" detachable ferrule. H. 7" x 4 ¼", O.L. 35"

**\$400-\$600**

**136. Sterling and Horn Dress Cane**

Dated 1908 Century-A hand worked silver overlay which is attached to a horn signed sterling, honey malacca shaft and a horn ferrule.

H. 4" x 5", O.L. 37 ½"

**\$500-\$700**

**137. Chinese Export Silver Cane**

Circa 1885-A heavy and high relief silver handle with Asian decoration, silver belt buckle collar, full bark cherry shaft and a brass ferrule.

H. 2 ½" x 1 ½", O.L. 34"

**\$500-\$700**

**138. German Silver Dress Cane**

Early 20th Century-A cast point .800 silver German handle which has foliage decoration, ebony shaft and a bi-metal ferrule.

H. 4 ½" x 4 ½", O.L. 37"

**\$300-\$500**

**134.**



**135.**



**137.**



**136.**



**138.**





139.



141.



140.

143.



142.

### 139. Nautical Ivory Knob Cane

Mid 19th Century-A whale's tooth handle with a small baleen disc atop, hexagonal walnut shaft and a bi-metal ferrule. H. 2" x 2 1/2", O.L. 37 1/2"

**\$350-\$500**

### 140. Horn Dress Cane

Early 20th Century-Possibly Rhino, horn crook handle, gold gilt collar, malacca shaft and a bi-metal ferrule. H. 3" x 4 1/4", O.L. 34 1/2"

**\$300-\$600**

### 141. Cannon Ball Relic Cane

Late 19th Century-A light field cannon ball mounted, bell bronze and silver ornate collar, maple shaft and a brass shell ferrule. H. 1 1/2" x 1 1/2", O.L. 36"

**\$400-\$600**

### 142. Ivory Bull Dog Cane

Late 19th Century-A carved ivory bull dog with two color glass eyes, gilt gold collar, partridge wood shaft and a bi-metal ferrule. H. 1 7/8" x 1 1/2", O.L. 34 1/2"

**\$500-\$700**

### 143. Malacca Sword Cane

Circa 1860-A very nice example with a worn tortoise shell disc atop, lanyard holes, brass collar, 15 1/2"

3 sided blade with original bluing and gold decoration, malacca shaft and a brass ferrule. O.L. 36"

**\$800-\$1,200**



**144. Art Deco Dress Cane**

Circa 1920-An oval ivory Art Deco handle, small gold collar, oval ebony shaft, original cloth protective cover and a horn ferrule.

H. 1 ½" x 1 ¼", O.L. 35 ½"

**\$300-\$450**

**145. Gold Dress Cane**

Circa 1925-A signed 14kt handle with an Art Deco letter monogram atop, nice Malacca shaft and a horn ferrule. H. 1" x 1", O.L. 36"

**\$500-\$800**

**146. English Pique Cane**

Circa 1700-A nice early example with multiple sections of pique work, expected wear and tear of a cane of this age, unusual diamond carved oak shaft and a bi-metal ferrule.

H. 2" x 1 ¼", O.L. 32 ¼"

**\$800-\$1,200**

**147. Pipe/Dagger System Cane**

Late 19th Century-A carved rosewood pipe which has a horn shoe and a cover which is detachable, when the pipe is unscrewed from the shaft a 3 ½" hand forged dagger appears, British Hallmarked collar, faux bamboo exotic wood shaft and a bi-metal ferrule. H. 3" x 5", O.L. 35"

**\$1,200-\$1,500**

**148. Chinese Export Cane**

Late 19th Century-A Kwan Wo silver export crook, large malacca shaft and a bi-metal ferrule.

H. 4 ½" x 5", O.L. 38"

**\$500-\$600**

**146.**



**144.**



**147.**



**145.**



**148.**





150.



**149. Tipliz Bull Dog Cane**

Early 20th Century-A well carved bull dog with applied silver, belt buckle silver collar, malacca shaft and a horn ferrule. O.L. 36"  
\$500-\$600

**150. Shegreen and Ivory Cane**

Circa 1920-A wonderful Art Deco presentation, oval ivory and Shegreen entwined handle, signed 14kt collar, ebonized rosewood shaft, largest example of this genre that we have seen and a horn ferrule. H. 1 5/8" x 2", O.L. 36"  
\$500-\$800

149.



151.



152.



**151. Ivory Sword Cane**

Mid 19th Century-A walrus ivory handle, ornate silver metal spacer, bone handle spacer, 26 1/2" 4-sided blued-gilt-acid etched blade, engraved coin silver collar, malacca shaft and a spike ferrule. H. 5 1/2" x 1 1/2", O.L. 34 1/4"  
\$1,000-\$1,400

**152. Niello Silver Dress Cane**

Late 19th Century-A very fine representation of this application, French silver and Maker Hallmarks, rich snakewood shaft and a bi-metal ferrule. H. 3 1/2" x 4", O.L. 35"  
\$400-\$700

153.



**153. Meissen Porcelain Dress Cane**

Circa 1890-A hand painted ball with lovers portraits among flowers with gold moriage work, one plain and one ornate collar, rich rosewood shaft and a bi-metal ferrule. H. 1 1/2" x 5", O.L. 36 1/2"  
\$800-\$1,200

**154. Woven Gold Dress Cane**

Early 20th Century-A precisely woven gold handle, honey malacca shaft and a horn ferrule.

H. 1 ½" x 1 ¼", O.L. 36"

\$500-\$700

**155. Silver and Gold Dress Cane**

Early 20th Century-Ornate gold filled handle and collar, basket woven center handle which is signed sterling and Lyon, coconut wood shaft and a bi-metal ferrule. H. 5" x 1", O.L. 36"

\$500-\$800

**156. Store Display Cane Stand**

Circa 1880-A F.H. Feldmann cast metal rotating counter top cane stand, spaces for 12 canes in fine condition. H. 14" W. 10"

\$500-\$1000

**157. Collector's Group of Canes**

\$200-\$400

**158. Collector's Group of Canes**

\$200-\$400

**159. Collector's Group of Canes**

\$200-\$400

155.

154.

159.

157.

156.

158.





161.



160.



163.



162.



164.

#### 160. Cloisonné Watch Cane

20th Century-A Chinese cloisonné compartment handle with a Swiss key wind antique movement, winding and set key, lignum shaft and a metal ferrule. H. 2" x ¾", O.L. 35 ¼"

**\$400-\$600**

#### 161. Horn Dress Cane

Circa 1870-A twisted horn handle with a silver hat attached, inlaid red stone, signed sterling collar, bamboo shaft and a brass ferrule (appears to be a stylized elephant)

H. 4" x 3", O.L. 35"

**\$400-\$600**

#### 162. Art Deco Whippet Cane

Circa 1920-A prime silver casting, signed .925, hallmarked but unreadable walnut shaft and a horn ferrule. H. 4 ½" x 4", O.L. 36"

**\$500-\$1,000**

#### 163. Ivory Telescope Cane

Early 20th Century-A three draw brass telescope which is signed SBR, inserted into an ivory ball, brass collar and a later maple shaft, bi-metal ferrule, telescope 9 ½"

H. 5" x 2, O.L. 36"

**\$500-\$800**

#### 164. Ivory Dog Cane

Circa 1940-A carved ivory Russian dog with two color glass eyes, gold threaded paint application to a hardwood shaft and no ferrule.

H. 1 ½" x 2 ¼", O.L. 36"

**\$400-\$600**



**165. Asian Silver Dress Cane**

Early 20th Century-A long cast ornate silver handle ebonized shaft and a brass ferrule.

H. 7/8" x 10" O.L. 35"

**\$400-\$500**

**166. Gold-filled Dress Cane**

Dated 1870-An ornate handle which is inscribed "Romeo Comd. No. 6", thick ebony shaft and a metal ferrule. H. 1 1/2" x 2", O.L. 36 1/2"-

**\$300-\$500**

**167. Exotic Bird Cane**

Circa 1930-A carved and painted bird with two color glass eyes, natural twig spur shaft and a stopper ferrule. H. 2" x 3", O.L. 35"

**\$250-\$400**

**168. Sterling Dress Cane**

Circa 1890-A signed sterling Art Nouveau handle, ebonized shaft and no ferrule. H. 1 5/8" x 2", O.L. 35"

**\$200-\$300**

**169. Silver Owl Dress Cane**

Circa 1930-A well cast silver owl, British Hallmarked collar, maker's mark is K.C., ebony shaft and a horn ferrule. H. 3 1/2" x 1 7/8", O.L. 36 1/2"

**\$600-\$1,200**

**170. Ivory Dress Cane**

Circa 1890-A stylized Art Nouveau ivory handle with sterling end caps, ornate signed sterling collar, bamboo shaft and a bi-metal ferrule.

H. 4 1/2" x 1 1/4", O.L. 35 3/4"

**\$300-\$500**

**166.**



**165.**



**168.**



**169.**



**167.**



**170.**



171.



172.



**171. Folk Art Snake Cane**

Early 20th Century-Carved bone handle, carved natural branch shaft with 8 snakes which all have beaded eyes and a metal ferrule.

H. 1" x 3", O.L. 38"

**\$200-\$300**

**172. Horn Dress Cane**

Early 20th Century-A stylized horn handle, hallmarked 8 kt gold handle, exotic wood shaft and a metal ferrule.

H. 4 1/4" x 3", O.L. 35"

**\$300-\$500**

173.



174.



**173. Piccolo System Stick Cane**

Early 20th Century-A Hawkes & Son piccolo system stick with a ivory handle, nickel silver keys and a horn ferrule.

H. 2" x 1 1/4", O.L. 37 1/2"

**\$500-\$1,000**

**174. Asian Bone Ball Cane**

Mid 20th Century-A carved bone ball which has two or three other inserts, small brass collar, ebony shaft and a brass ferrule.

H. 2" x 2", O.L. 34 3/4"

**\$400-\$600**

175.



**175. Island Sword Cane**

Circa 1935-Exotic wood handle, pewter collar, unpolished 26" blade, leather covered shaft and a white metal ferrule.

H. 4" x 4 1/2", O.L. 34"

**\$200-\$300**

**176. Neillo Dress Cane**

Circa 1900-A silver handle which has an attachment ring, small puncture wound near the top of the handle, wood collar, varnished cherry shaft and a metal ferrule.

H. 3" x 1 ¼", O.L. 34 ½"

**\$200-\$300**

**177. Silver Dress Cane**

Late 19th Century-A long ornate silver handle in high relief, white metal collar, ebony shaft and a metal ferrule-H. 12 ½" x 1", O.L. 35 ¾"

**\$300-\$500**

**178. Riding Crop**

Dated 1892-A silver custom riding crop made by J. Carver, stag handle, gold colored portraits on silver commemorating Columbus and George Washington, natural vine shaft with a leather strap

H. 4 ½" x 1 ¾", O.L. 31"

**\$200-\$400**

**179. Bone Jester's Cane**

Early 20th Century-Carved bone handle, cherry shaft and a metal ferrule. H. 2" x 1 ¼", O.L. 34"

**\$200-\$300**

**180. Gold Filled Dress Cane**

Early 20th Century-A well appointed Simmons dress cane, mahogany shaft and a bi-metal ferrule.

H. 2" x 1", O.L. 34 ½"

**\$200-\$300**





182.



181.



### 181. "Not the Four Graces"

#### Folk Art Canes

Late 19th Century-A wonderful group of folk art canes with various faces from different regions, all have twig spur shafts, all have glass eyes, and an average length of 36"

**\$700-\$1,200**

### 182. Pair of Mexican Folk Art Cane

Circa 1925-One of these is the best and the biggest Mexican Folk Art cane I've ever seen and the other is quite common, large one has a 2" handle and a shaft which is 1 3/8" diameter, not just a carved eagle but "the Eagle has landed"

**\$200-\$400**

### 183. French Pique Ivory Dress Cane

Circa 1880-Silver pique work, twig spur shaft and no ferrule.

H. 1 1/4" x 2", O.L. 35 1/2"

**\$500-\$700**

### 184. Nautical Scrimshaw Cane

19th Century-A whimsical bird which is made from a whale's tooth, inlaid ivory heart with the initials J.F., exotic wood shaft and no ferrule. (Buyers please be aware that later date work has been added to many canes in this genre)

H. 4" x 1 1/4", O.L. 35"

**\$1,000-\$1,500**

184.



183.



**185. Whale Bone Day Cane**

Circa 1865- Truly a genuine whale bone cane both shaft and handle, large white metal collar and no ferrule.

H. 5" x 7/8", O.L. 33", Dia. 5/8"

**\$700-\$1,000**



185.



186.

**186. Whale's Tooth Nautical Cane**

Circa 1890-A scrimshawed whale's tooth with the date 1821, ship hero, presented to Captain Pendleton", horn and ivory spacers, hardwood shaft with abalone inlay, copper eyelets and a bone/ baleen ferrule.

(Buyers please be aware that later date work has been added to many canes in this genre.

H. 4" x 1 1/4", O.L. 36"

**\$1,000-\$1,500**

**187. Nautical Fist Cane**

Late 19th Century-A carved ivory fist with a baleen baton, barked exotic wood shaft and no ferrule. H. 2 3/4" x 2 3/4", O.L. 34"

**\$700-\$900**



188.

**188. Full Ivory Dress Cane**

Circa 1945-A full ivory segmented dress cane with a carved elephant handle, unscrews in the center, and an ivory ferrule. H. 4 1/2" x 3", O.L. 34 3/4"

**\$1,000-\$2,000**

**189. Victorian Dress Cane**

Late 19th Century-A large carved ivory lady, hallmarked ornate silver collar, silver eyelets, exotic wood shaft and a bi-metal ferrule.

H. 4 1/4" x 1 1/2", O.L. 36"

**\$600-\$900**



189.



187.



191.



190.

**190. Silver and Enamel Dress Cane**

Circa 1920-An Art Deco silver handle with a cobalt blue disc atop, maple shaft and a bi-metal ferrule.  
H. 1 ¼" x 1 ¼", O.L. 36 ½"

**\$200-\$300**

**191. Kabuki Ivory Dress Cane**

Late 19th Century-A substantial carved ivory handle, British Hallmarked silver collar, rich malacca shaft and a horn ferrule.  
H. 3" x 2", O.L. 36"

**\$600-\$800**



192.



193.

**192. Ebony Exotic Birds**

Early 20th Century-Three carved birds on a branch, long ebony shaft and a bi-metal ferrule.

H. 3 ¾" x 4 ½", O.L. 35 ¼"

**\$400-\$600**

**193. Viennese Porcelain Mildly Erotic Cane**

Late 19th Century-The famous mildly erotic motif of Leda & Swan in white porcelain with highlighted eyes and exocitic shaft and a metal ferrule. Most likely Audorf manufacture.

H. 4 1/4" x 2 ≤", O.L. 35 1/2"

**\$700-\$1,200**



194.

**194. Viennese Porcelain Mildly Erotic Cane**

Late 19th Century-The famous mildly erotic Harem motif of the reclining nude and Blackamoor boy in white with highlighted eyes and lips ,exociticwood shaft and a brass ferrule. Most likely Audorf manufacture.

H. 4" x 2 ≤", O.L. 35"

**\$1,000-\$1,800**



**195. Silver Snake Cane**

Circa 1930-A cast .800 silver handle with green glass eyes which is hallmarked but unreadable, ebony shaft and a horn ferrule.

H. 3  $\frac{3}{4}$ " x 2  $\frac{1}{2}$ ", O.L. 36"

**\$500-\$700**

**196. Ivory Intimate Games Cane**

Late 19th Century-A most unusual example of a 34" whip with a dog handle which has two color glass eyes which inserts perfectly into an ivory handle and locks, silver collar, thick ebony shaft and an ivory ferrule.

H. 4  $\frac{1}{4}$ " x 2  $\frac{1}{4}$ ", O.L. 36  $\frac{1}{2}$ "

**\$1,500-\$2,000**

**197. Porcelain Dress Cane**

Circa 1875-A Sevres type dress cane with two hand-painted maidens, heavy moriage work, ornate gold filled collar, walnut shaft and a very ornate gold and metal ferrule.

H. 3  $\frac{1}{2}$ " x 1  $\frac{1}{2}$ ", O.L. 34  $\frac{1}{2}$ "

**\$400-\$600**

**198. Ivory Dog Cane**

Circa 1875-A chained ivory dog which is attached to a dog house, hardwood shaft and a bi-metal ferrule. H. 6  $\frac{1}{2}$ " x  $\frac{7}{8}$ ", O.L. 38"

**\$400-\$500**

**199. Asian Ivory Dress Cane**

Late 19th Century-A foliage carved Japanese handle with a pair of red Oriental characters, ivory ring collar, faux bamboo exotic wood shaft and an ivory ferrule.

H. 5  $\frac{1}{2}$ " x  $\frac{7}{8}$ ", O.L. 36"

**\$400-\$600**



196.



195.

198.

199.



197.





201.

**200. Ivory Flower Cane**

Late 1900's-An unusual carved ivory handle of an exotic flower with a blank cartouche, small ring ferrule, exotic wood shaft and an ivory ferrule. H.  $\frac{3}{4}$ " x 5", O.L. 35  $\frac{1}{2}$ "  
\$400-\$500

**201. Japanese Asian Elephant Ivory Cane**

Circa 1890-A prime example of a "1000 Face" cane, carved with the purest and whitest of all ivory, over 20 well defined faces, very unusual silver collar with a snake and an eagle in high relief about to fight, natural bamboo shaft and a bi-metal ferrule, former Richard Wagoner Collection.

H. 1  $\frac{7}{8}$ " x 1  $\frac{5}{8}$ ", O.L. 36"  
\$1,000-\$1,500

200.

202.



**202. Nautical Whalebone Cane**

Circa 1880-Carved whalebone fist with tooth baton, thick ebony shaft and a horn ferrule.

H. 3" x 1  $\frac{1}{2}$ ", O.L. 37"  
\$500-\$700

**203. Cheroot Cannon Cane**

Early 20th Century-A signed Ericsson by Shelby Steel Tube Co. cheroot system stick, original nickel cannon and collar in nice condition, exotic hardwood shaft and a bi-metal ferrule.

H. 5" x 1  $\frac{3}{8}$ ", O.L. 36"  
\$600-\$900



203.

**204. Damascene Dress Cane**

Late 19th Century-An exceptional representation of this damascene work in pristine condition, exotic snake wood shaft and a brass and metal bullet ferrule

H. 1 ¼" x 1 ¾", O.L. 35 ½"

**\$500-\$600**

**205. Quartz Hardstone Dress Cane**

Circa 1930-A nice crystallized hardstone handle, gold metal collar, ebony shaft and a horn ferrule.

H. 3" x 1 ¼", O.L. 37 ½"

**\$300-\$400**

**206. Ivory Pique Country Cane**

Circa 1800-An early example and a prime example of a whale's tooth with silver pique work and a small piece of baleen atop, eyelets are surrounded by detailed work, worked coin silver collar, thick natural twigspr shaft and a brass and iron 2 3/8" ferrule.

H. 4" x 1 5/8", O.L. 37"

**\$700-\$1,200**

**207. Jefferson Folk Art Cane**

Late 19th Century-A prime example of Craddock's carving of his upper line canes. Some wear on bottom 20% of cane. O.L. 34"

**\$900-\$1,200**



207.

206.

205.



204.









Kimball M. Sterling, Inc. (TFL-1915)  
125 West Market Street  
Johnson City, Tennessee 37601  
kimballsterling @ earthlink.net  
423.928.1471

Member National Auctioneers Association  
© Copyright 2012 Kimball M. Sterling, Inc.

Photography by James Price

Catalog Design by KT Design, LLC  
www.kristaft.com