



IMPORTANT

SUMMER CANE AUCTION



TERMS & CONDITIONS

1. Cash, check, MasterCard, or Visa. A 15% buyers' premium will be added to the hammer price as part of the sale price for in-house, phone, and absentee bidders. We reserved the right to hold purchases until the buyers checks clears if buyer is not known by us. Bank letter of credit is acceptable. A 20% buyers fee will be charged to internet bidders.

2. Mail or phone bids are accepted; the firm may require a deposit.

3. Kimball M. Sterling, Inc. has endeavored to catalog and describe the property correctly. All property is sold as is and neither the auction company nor the consignor will be responsible for descriptions, genuineness, provenance or condition of the property. No statement in the catalog made orally at the sale or otherwise shall be deemed to be a warranty, representation, or an assumption of liability.

4. In the event of any dispute between bidders, the auctioneer shall have total discretion to determine the successful bidder, in which his determination shall be final or to re-offer and resale the article in dispute. Title of the item or items purchased by the bidder will pass at the fall of the gavel and declaration of bidder. This is not an approval auction. All measurements are approximate.

5. Principal auctioneer: Kimball M. Sterling #2467. B. Elizabeth Sterling, auctioneer # 5757. Firm Kimball M Sterling Inc. TFL-1915

6. Bidders may bid live on the Internet by visiting <http://www.auctionauction.com> You may also view the auction at this site and bid by phone.

7. Communications:
Telephone 423-928-1471.
Fax 423-928-2816.
Cellular 423-773-4073, 423-773-4072.
Email kimballsterling@earthlink.net

8. Worldwide shipping available. International sales which are protected by C.I.T.E.S. permits can also be arranged. Estimated bidders cost per cane is \$255.00 for permits and inspections plus the shipping cost. A permit may also be required by your country. Buyers pay for shipping, packing and insurance from United States Postal Service.

9. Kimball M. Sterling, Inc. will not be held responsible for bids received on the day of the auction, unexecuted absentee bids, phone bidders not contacted or slow Internet bids. Although we do attempt to get all bids executed problems do occur. There will be no recourse from the bidder. We will not be responsible for items left on our location for over 30 days.

10. Sale will be conducted at 125 West Market Street, Johnson City, Tennessee. 37604. Announcements day of the sale take precedence over pre-sale advertising. Any litigation that pertains to this auction will be conducted in the county of Washington in Tennessee and is agreed upon by registering for this auction.

11. Airport is the Tri-Cities Airport, which is approximately 20 miles from the gallery. Internet catalog and live bidding available at www.auctionauction.com Best Western Hotel: 423-282-2126. A very fine hotel which offers Sterling Auction a discount rate is the Carnegie Hotel 1216 W State of Franklin Rd, (423) 979-6400.

12. Please call for condition report on sale lots or email us. We do send out multiple photos by email of any lot in the auction. By registering for this auction you accept the terms and give Kimball M. Sterling auctions the right to charge your credit card on file for purchases and shipping, which you have entered on your registration.

13. Parking service is free.

Kimball & Victoria Sterling Present an

IMPORTANT SUMMER CANE AUCTION



Sunday, July 17th 1:00 PM EST

Preview - Saturday, July 16th 12:00 - 4:00 PM EST

Sunday, July 17th 10:00 AM



Kimball M. Sterling Auction Gallery

125 West Market Street Johnson City, Tennessee 37601

kimballsterling @ earthlink.net

423.928.1471

Live on the internet at LIVEAUCTIONEERS.COM

Two Time Winner of Best of Show from the
National Auctioneers Association

www.auctionauction.com

1. Silver Horse Dress Cane

Early 20th Century-A solid cast silver handle which has unreadable hallmarks and marked 900 silver, exotic wood shaft and a metal ferrule-H. 4" x 3 1/2", O.L. 35 1/2"
\$500-\$800

2. Rock Crystal Eagle Dress Cane

Early 20th Century-A beautiful carved rock crystal handle with enameled eyes, unmarked gold collar with stars, ebony shaft and a horn ferrule-H. 3 1/4" x 2 1/4", O.L. 35 1/2"
\$800-\$1,200

3. Ivory Elephant Cane

Early 20th Century-A double carved handle with Mama and Baby elephant, basket woven silver collar mahogany shaft and a horn ferrule-H. 4 1/2" x 2", O.L. 35 1/2"
\$800-\$1,200

4. Massive Ivory Frog

Circa 1925-A large carved handle with two color green and black eyes, silver metal collar, large mahogany shaft and a horn ferrule-H. 2 3/4" x 4 1/4", O.L. 37"
\$1,000-\$1,500



1.



4.



2.



3.



6.



7.



8.



9.

5. Horse Dress Cane

Early 20th Century-An ornate signed 900 silver handle with unreadable hallmarks, mahogany shaft and a 3" horn ferrule-H. 2 ¾" x 1 ¼", O.L. 36"
\$400-\$800

6. Compass Cane

Mid 20th Century-A brass handle with mother of pearl handle inlay, large brass collar, mahogany shaft and a horn ferrule-H. 1 ½" x 1 ½", O.L. 36"
\$300-\$400

7. Horn and Ivory Dress Cane

Early 20th Century-An ivory handle with a carved horn disc of a horse atop, mahogany shaft and a horn ferrule-H. 1" x 2", O.L. 35 ½"
\$300-\$400

8. Massive Ivory Fist Cane

Circa 1930-A large carved piece of ivory done in nice detail, metal collar, ebony shaft and a horn ferrule-H. 2 ½" x 2" x 2 ¾", O.L. 36"
\$800-\$1,200

9. Massive Ivory Dog-Circa 1930-

A large carved ivory handle, ornate brass collar, ebony shaft and a horn ferrule-H. 4" x 2" x 2 ½", O.L. 35 ½"
\$1,000-\$1,500

5.



10. Ivory Owl Cane

Early 20th Century-A massive carved Ivory handle, two color glass eyes, massive exotic wood shaft and a horn ferrule-H. 5 ½" x 1 ¾", O.L. 38"

\$1,000-\$1,500

11. Ivory Gambler's Cane

Circa 1900-An ivory dice cane with five die which are covered by a glass insert, spinning ivory collar, ebony shaft and a horn ferrule-H. 1 ¾" x 2 ½", O.L. 35"

\$400-\$600

12. Gold Dress Cane

Circa 1920-Unsigned but tested to be 14k, ornate compass collar, exotic wood shaft and a horn ferrule-H. 1" x 2 ¾", O.L. 35"

\$500-\$1,000

13. Gold Sunday Stick

Circa 1925-The cane has an unreadable hallmark, but appears to be much like the hand of Cartier, both rose and yellow gold alternate on the handle, exotic snakewood shaft and a horn ferrule-H. 3 ¼" x 2 ¼", O.L. 37"

\$500-\$1,000

14. Queen's Guard Silver Cane

Circa 1900-A cane which is engraved "E. Ponter, Queen's Guard Bath," ornate silver handle with elephants and palm trees and other animals, massive burl walnut shaft and a horn ferrule-H. 1 ½" x 2 ½", O.L. 37 ½"

\$500-\$1,000





17.



15.

15. Silver Horse Cane

Circa 1900-A signed 800 silver ornate cast handle, ebony shaft and a horn ferrule-H. 3 ½" x 2", O.L. 35 ½"
\$500-\$700

16. Ivory Lion Cane

Circa 1875-A full carved lion, ornate coin silver collar with etchings and dents, ebony shaft and a horn ferrule-H. 5" x 2", O.L. 37"
\$1,000-\$1,500

17. Ivory Cat Cane

Early 20th Century-An ivory cat with three color glass eyes, signed but unreadable silver collar, mahogany shaft and a horn ferrule-H. 2"x 2", O.L. 37"
\$1,000-\$1,500

18. Soccer Silver Dress Cane

Late 19th Century-A signed 800 silver handle which is probably German done in very high relief, exotic wood shaft and a horn ferrule-H. 4" x 3 1/2", O.L. 36"
\$500-\$1,000



18.



16.

19. Sterling Eagle Dress Cane

Circa 1900-A large signed sterling eagle with three color glass eyes, ebony shaft and a horn ferrule-H. 4 ½" x 4 ½", O.L. 36"

\$500-\$1,000

20. Erotic Silver Dress

Circa 1890-A beautiful signed sterling nude maiden with flowing hair, exotic wood shaft and a horn ferrule-H. 3 ¾" x 4", O.L. 34 ½"

\$700-\$1,000

21. Sterling Dog Dress Cane

Circa 1920-A wonderful resting dog with two color glass eyes, small silver collar, ebony shaft and a horn ferrule-H. 4 ½" x 4", O.L. 36 ½"

\$500-\$700

22. Tiger Eye Dress Cane

Circa 1930-A large oval tiger eye handle, gold metal collar, exotic wood shaft and a horn ferrule-H. 1 ¼" x 3 ½", O.L. 37"

\$500-\$600

23. Ivory Victorian Bust Cane

Late 19th Century-A carved ivory bust of what appears to be an African American lady with painted enamel eyes, ribbed brass collar, ebony shaft and a horn ferrule-H. 3" x 1 ¾", O.L. 37"

\$500-\$1,000



19.



20.



21.



23.



22.



24.



26.



24. Japanese Ivory Dress Cane

Circa 1890-A large carved ivory handle with a ape steeling an egg from a mother eagle, brass collar, ebony shaft and a horn ferrule-H. 4 ½" x 1 ¾", O.L. 36 ½"

\$1,000-\$1,500

25. Continental Dress Cane

Circa 1850-A massive cast and signed 800 silver handle, pair of silver eyelets, massive Malacca shaft and a bi-metal ferrule-H. 5" x 1 ¾", O.L. 36 ½"

\$500-\$1,000

26. Massive Ivory Biblical Character Cane

Circa 1890-Massive handle done in great detail with two color glass eyes, precise woven leather collar, twig spur exotic shaft and a metal ferrule-H. 4 ¼" x 2 ¼" x 2", O.L. 36"

\$1,200-\$1,800



25.



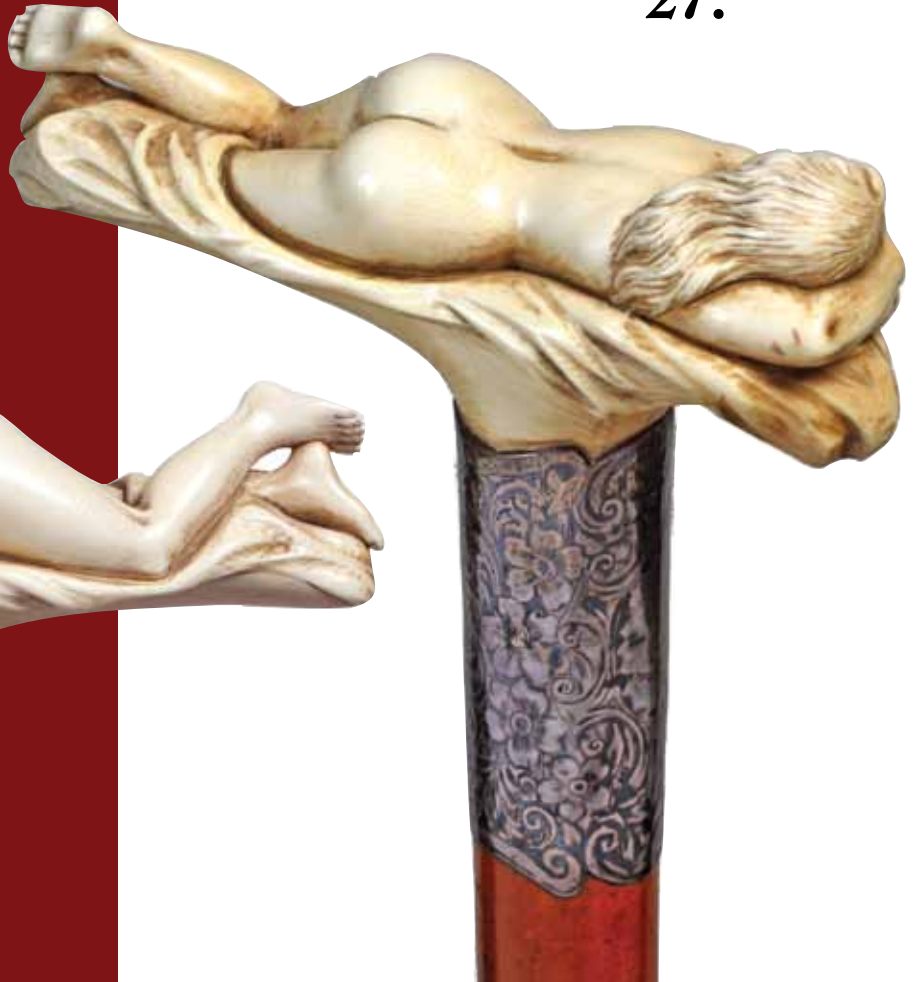
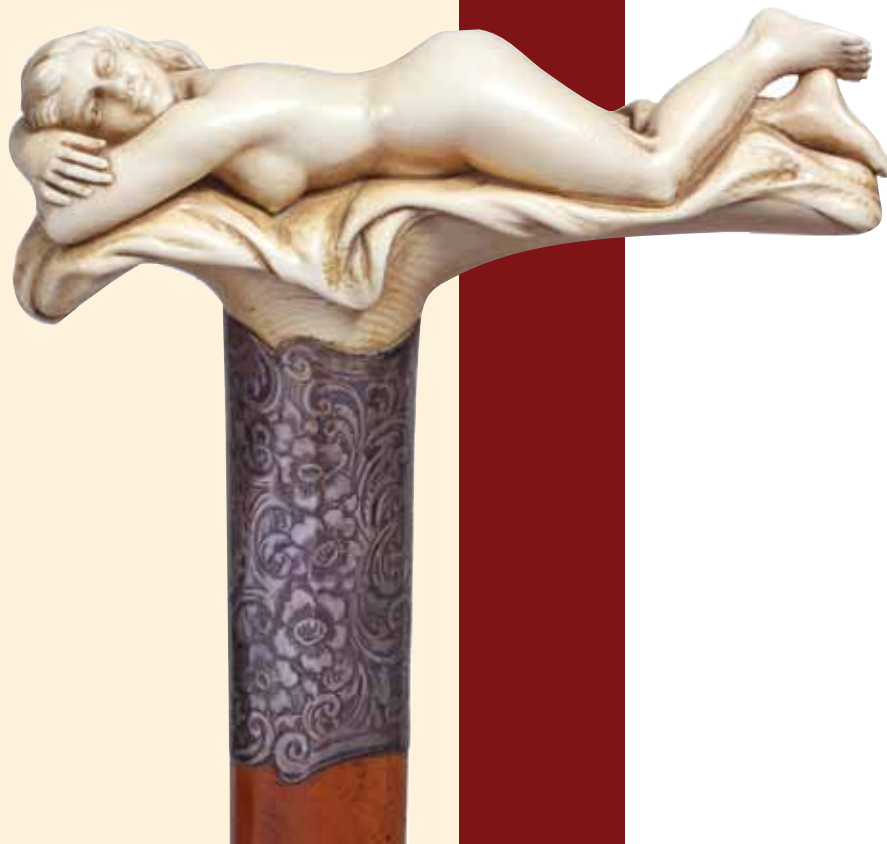
27. Ivory Full Nude Dress Cane

Circa 1890-A carved ivory handle done by an expert's hand, featured on page 134 of "The Pearson Cane Collection by Yousseff W. Kadri".

This cane, probably French, has a massive silver collar, massive Malacca shaft and a metal ferrule-H. 5" x 1 3/4" x 1 3/4", O.L. 36"

\$3,000-\$5,000

27.





28. Victorian Ivory Street Walker's Cane

Circa 1875-A beautiful carved English Ivory Nude which is featured on page 144 of "The Pearson Cane Collection by Yousseff W. Kadri". The handle has great full frontal exposure of the female body, metal collar, mahogany shaft and a horn ferrule-H. 2 ¼" x 1 ½" x 4", O.L. 36 ¼"
\$4,000-\$7,000



28.

29. Erotic Ivory English Dress Cane

Circa 1890-A museum quality carving of a nude lady holding an ivory penis in her hand, "Are Men Worth the Trouble", may be a symbolic carving contemplating a young lesbian wondering if she has made the right decision in life, coin silver hallmarked collar, ornate signed "Wilkerson, London, 27 1/2" blade in near mint condition, signed coined silver center collar, split bamboo shaft and a brass ferrule (from a 40 year old Ft. Lauderdale Collection)-H. 2 1/2" x 2", O.L. 38 1/2" \$14,000-\$16,000

29.





30.

30. Ivory Hunter / Vine Cane
 19th Century-A very fine and substantial carved hunter boy with bow and prey integrated on the top of a one piece gnarled vine shaft, worn out ferrule. Most likely Russian-H. 4 ½ x 1 ½", O.L. 35 ½"
 \$2,000-\$3,000

31. Barking Ivory Dogs Cane
 Late 19th Century-A unique ivory cane carved in high relief with two facing dogs barking at one another, ebonized wood and a metal ferrule. Great surface luminosity-H. 4 ½" x 2", O.L. 33 ½"
 \$1,200-\$1,800

32. Teplitz Wood and Silver Dog Cane
 Circa 1900-A well carved Bulldog head ornate with applied silver, fine grained wood shaft with an integral crook handle and a metal ferrule. H. 5 ½" x 4", O.L. 36"
 \$1000-\$1200



31.



32.

33. Carved Ivory Dog Cane

Late 19th Century-A large and finely carved ivory handle with a family of five dogs, silver collar with initials and German hallmarks and a scarred Kongo wood shaft with a metal ferrule. H. 5 x 1 ¾", O.L. 33"
\$1,800-\$2,500

34. Aventurine Quartz Dress Cane

Early 20th Century- Substantial shimmering green aventurine quartz French handle with a chased silver collar and ebony shaft with a horn ferrule. H. 3" x 1 ¼", O.L. 37 ¼"
\$600-\$1,000

35. Folk Art Automation Cane

Circa 1900-An original working example of a German Black Forrest cane showing what seems to be a religious man with eyeglasses and Kippah. By depressing the lever the head raises up and the lower jaw drops open. Original color highlights, malacca shaft with metal collar and ferrule. -H. 3 ½" x 1 3/4", O.L. 32 ¾"
\$800-\$1,200

36. Figural Hippo Ivory Cane

Circa 1870-An L-shaped German Hippo ivory handle with old man face, engraved silver collar, malacca shaft and an ivory ferrule. -H. 3" x 1 ½", O.L. 35 ¼"
\$600-\$900

33.



34.



35.



36.





39.

37.



38.



37. Black Forrest Fold

Automation Cane

Circa 1900-A prime example of this German cane in perfect working condition, by depressing the lever the eyes rotate, the lower jaw opens and the red tongue sticks, shaved beechwood branch and a horn ferrule-H. 3 ½" x 2", O.L. 35 ½" \$800-\$1,200

38. Early Meissen Cane

18th Century-Porcelain knob painted in the taste of Höroldt with an idealized river harbor scene and trees, real malacca shaft with gold eyelets and brass collar and ferrule-H. 2 1/4" x 1 1/4", O.L. 35" \$2,000-\$3,000

39. English Ivory Horse Cane

Circa 19th Century-L-shaped and curving ivory horse handle on a stepped partridge shaft and a metal ferrule. The depiction has something of a flying horse from a merry-go-round and is remarkable. Original condition.-H 4" x 3 ½", O.L. 36" \$1,600-\$2,400

40. Viennese Equestrian Cane

Late 19th Century-Large Opera silver handle chased with laurel and bays and shield with a stallion's head on one side and an identical one with engraved initials on the other. Ebony shaft with a horn ferrule.

Estimate

\$700-\$900

41. French Lapis Lazuli

Dress Cane

Early 19th Century-Lapis lazuli ball knob of an intense natural blue color with white veins and gold dust, gilt collar, ebony shaft and a horn ferrule-H. 1 3/4" x 1 3/4", O.L. 38 1/4"

\$600-\$900

42. Tula Russian Dress Cane

Circa 1880-A large crook Tula silver handle with 84 and maker hallmarks, finely decorated and inscribed KAUKAS in matching technique, ebony shaft and a horn ferrule-H. 5" x 4 1/2", O.L. 36 3/4"

\$800-\$1,200



40.

41.



42.

43.



43. French Ivory Nude Cane
Late 19th Century-A substantial ivory handle with a standing naked Venus tied against a tree, malacca shaft and a metal ferrule. Master carving with great and naturalistic detail, aged well with a luminous surface to the ivory and warm patina to the shaft. Could be a Andromeda, the damsel in distress of Greek mythology-H-5 ½" x 1 ½", O.L. 38" \$7,000-\$9,000

44. French Rock Crystal Dress Cane

Circa 1900-Substantial rock crystal butterfly handle with finely tooled and partly frosted surface embellished with large red garnet cabochons on the wings and small green tourmaline eyes. The silver collar is engine turned and red enameled and the shaft is ebony with a metal ferrule. This one-of-a-kind cane is in the taste of René Lalique and belongs to the upscale jewelry Objects of Virtue-H 3 ¼" x 2", O.L. 38 ¼"
\$5,000-\$8,000



44.



45.



46.

45. Pietradura and Silver Cane

Circa 1860-The finely chased handle is topped by a round panel with tiny, oblong micro mosaics building a colored star centered by the word ROMA, fruitwood shaft and a horn ferrule. This cane is done in the great Italian style and typical for the Grand Tour -H. 3" x 1", OL. 37"

\$1,200-\$1,800

46.English Dual Purpose Compound Cane

Circa 1880-Gun metal container knob with an unfolding, hinged and jeweled top on a cylindrical collar engraved Countess of Coventry, 1 Balfour Place, Park Lane, W. Pepperwood shaft and a brass ferrule-H. 1 3/4" x 1 3/4", O.L. 36 1/4"

\$800-\$1,200

47. English Dual Purpose Snuff Tobacco Cane

Circa 1865-Baroque Staffordshire Bilston enamel container knob with opening top and painted with scattered blooms, malacca shaft and a metal ferrule. Some repair on the enamel -H. 3 1/2" x 1 1/2", O.L. 34 1/2"

\$1,000-\$1,800



47.



48. Knob Kerrie Mythological Erotic Cane

Ca. 1890-Well modeled silver plated casting of Leda and the Swan with a multiple ring collar, palm wood shaft and a horn ferrule. The heavy weight and pointed tip makes it a redoubtable defense weapon-H. 3 1/2" x 3", O.L. 37"

\$800-\$1,200

48.

49. Viennese Porcelain

Mildly Erotic Cane

Late 19th Century-The famous mildly erotic motif of Leda & Swan in white porcelain with blue and red highlighted eyes and lips and 824 embossed manufacturing serial number on a stepped partridge shaft with a metal ferrule. Most likely Audorf manufactured-H. 4 1/4" x 2 3/4", O.L. 35 1/2"

\$700-\$1,200

50. English Ivory Erotic Cane

Late 19th Century-Ivory handle suggestively carved as female organ, stepped malacca shaft with silver collar. A minor chip to the handle-H. 3" x 1 3/4", O.L. 32 1/2"

\$1,000-\$1,500

51. Viennese Porcelain Mildly Erotic Cane

Late 19th Century-The famous mildly erotic Harem motif of the reclining nude and Blackamoor boy in white with colored highlighted eyes and lips, 825 serial number, malacca shaft and a metal ferrule. Most likely Audorf manufactured.-H. 4" x 2 3/4", O.L. 32"

\$700-\$1,200

52. Members Only Erotic Cane

English London hallmarks 1920-Ivory handle His on the front and Her on the back, silver collar engraved A. Ley 1895-1920, Makassar ebony and a brass ferrule. Nice original condition-H. 3 1/2" x 1 1/4", O.L. 34 1/4"

\$1,200-\$1,800



50.



49.



51.



52.



56.



55.

53. Jade Dress Cane

Circa 1910-Jade handle of pale green mottled color in an elongated, plain and fluting shape with a round top, gilt collar, rosewood shaft with a horn ferrule-H 3 1/2" x 1", O.L. 38 1/2"
\$500-\$800

54. French Ivory Piqué

Early 18th Century-An original early cane with an ivory knob decorated with yellow gold and tortoiseshell piqué, rosewood shaft and a horn ferrule-H. 1 1/2" x 1 1/4", O.L. 35"
\$1,500-\$2,000

55. English Tortoiseshell & Silver Cane

Late 17th Century-An original Piqué-type faceted tortoiseshell and scalloped silver cap and collar, rosewood shaft and a metal ferrule. Wear and early damage atop but the cane keeps its integrity. Excessively rare-H 6" x 1 1/4", O.L. 36"
\$1,000-\$2,000

54.



53.



56. Wine Allegory Ivory French Cane

Late 19th Century-A long ivory handle fine and deeply carved with an encircling vine with grapes and leaves and topped by a male bust with initials. Ebony shaft and an ivory ferrule. Superb Dieppe carving in mint condition-H. 10 1/4" x 3/4", O.L. 40 3/4"
\$1,200-\$1,800

57. Flick Stick Cane

Mid 19th Century-An ivory knobbed malacca shaft, silver collar and a metal ferrule with an ejecting 7 ½" angular and beautifully etched, pike blade with locking feather and a white metal cap. Superb and perfectly working-H. 1 ¾ x 1 ½", O.L. 34"

\$1,500-\$2,500

58. Ivory Cork Screw Cane

Ca. 1890-Plain pistol-grip ivory handle on a stepped partridge shaft, brass ferrule and a plain and gilt metal collar covering an unscrewing device and a 2 ½" cork screw.-H. 2" x 1 ½", O.L. 37 ½"

\$800-\$1,200

59. European Silver Sword Cane

Circa 1875-A 1 ½" silver knob with Asian motif's, malacca shaft, 20" triangular foil blade with original blued finish, and a metal ferrule.-O.L. 36"

\$900-\$1,500

60. Knob Kerrie Silver Cane

19th Century-Well modeled and heavy cast silver knight head with pointed hat handle, integral multiple ring cylindrical collar, ebonized hardwood shaft and a metal ferrule-H. 3" x 2 ½", O.L. 34 ¾"

\$800-\$1,500



57.

59.



58.



60.



65.



62.



61.

64.



63.

61. English Vesta Cane

19th Century-One piece bamboo with a built in Vesta match container on the top. The hinged silver container has the striker on the inside of the lever operated lid. Original condition-Silver top diameter 1", O.L. 33"

\$500-\$800

62. Meissen Porcelain Dress Cane

Circa 1890-Royal cobalt blue ball on long stem painted with flowers among extensive and raised gold porcelain, beaded and plain metal collars, ebony shaft and a metal ferrule. Top of the line in mint condition and with the period and matching blue tassels-H. 5 3/4" x 1 1/2", O.L. 37"

\$1,200-\$1,800

63. Ivory Pig Cane

Early 20th Century-Carved Ivory Pig with coral eyes, ornate gold filled collar, mahogany shaft and a bi-metal ferrule-H. 4 1/2" x 1 3/4", O.L. 34"

\$800-\$1,000

64. Carved Ivory Dress Cane

Circa 1890-A carved ivory man with a feathered head dress, ornate gold filled collar, walrus ivory, bamboo shaft and a metal ferrule-H. 4 1/2" x 3 1/4", O.L. 36"

\$400-\$600

65. Asian Ivory Monkey Cane

Circa 1890-Hear no, see no, speak no, elephant ivory cane, signed in red Asian letters, metal collar, stepped partridge wood shaft and a bi-metal ferrule-H. 5 3/4" x 1 1/4", O.L. 38"

\$600-\$800

66. Asian Ivory Dress Cane

Circa 1890-A small but spectacular carving of five monkeys playing with a ball, signed sterling collar, hardwood shaft and a metal ferrule-H. 1" x 1", O.L. 35"

\$400-\$600

67. Walrus Ivory Ladies Leg Dress Cane

Circa 1890-A beautifully carved handle, signed sterling collar, exotic wood shaft and a bi-metal ferrule-H. 4 1/4" x 1 1/4" x 1 3/4", O.L. 33 1/2"

\$600-\$800

68. African American Stag Cane

Circa 1910-A carved stag handle, probably Jacksonville carved, exaggerated carving of an alligator which is biting the waistcoat of a gentleman. It has a signed sterling ornate collar, exotic wood shaft and a bi-metal ferrule-H. 6 1/4" x 3", O.L. 35"

\$1,000-\$1,500

69. Carved Ivory Skull Cane

Early 20th Century-A beautiful carving done with great detail, brass collar, exotic wood shaft and a metal ferrule-H. 2 1/2" x 1 3/4", O.L. 37"

\$600-\$800

70. Carved Bone Dress Cane

Early 20th Century-An unusually carved Japanese handle with an elephant and two turtles, signed sterling collar, ebony shaft and a metal ferrule-H. 4 1/2" x 1 1/2", O.L. 37 1/2"

\$500-\$600



68.



67.



66.



69.



70.

71.



71. Asian Carved Ivory Cane

Circa 1900-Elephant ivory carved lady holding a baby, exotic wood shaft and a bi-metal ferrule-H. 4"x 2", O.L. 36"

\$500-\$600

72. Carved Ivory Tusk Cane

Circa 1875-A carved crook handle, signed sterling collar, hardwood shaft and a metal ferrule-H. 4 1/4" x 2 3/4", O.L. 37"

\$300-\$400

73.



74.



73. Uncle Sam Bisque Cane

Circa 1900-An unusual bisque-porcelain handle which is artfully made and painted, small chip on collar, exotic wood shaft and metal ferrule-H. 3" x 1 3/4", O.L. 36"

\$400-\$500

74. Stanhope Porcelain Cane

Early 20th Century-A fired and decorated porcelain handle with flowers, a stanhope of the statue "Apollo and Daphne", burnt wood shaft and a brass ferrule-H. 1 1/2" x 1 1/2", O.L. 32"

\$200-\$400

72.



75.



75. Defensive Ax Cane

Circa 1900-A hand forged ax head with both steel and copper, steel collar, deeply carved hardwood shaft and a 7 1/2" iron, spike ferrule-H. 6" x 5", O.L. 37"

\$200-\$400

76. Ivory Dress Cane

Circa 1880-Carved ivory handle, a large collar signed silver, London, ebonized shaft and a horn ferrule-H. 4" x 1 1/4", O.L. 35"

\$300-\$500

76.



77. Fireman Presentation Gold Dress Cane

Early 20th Century—"Presented to Chief Baines by O. S. Fireman" is inscribed atop the cane. It is unmarked, but tested to be 14K or better, massive ebony shaft and a bi-metal ferrule-H. 1 ¼" x 1 ½", O.L. 33 ½"
\$400-\$500

77.



78.

78. Northwest Coast Folk Art Cane

Circa 1880-One piece carved folk cane with two fish and a turtle, natural grown twig spur shaft and never had a ferrule-O.L. 37"
\$600-\$700

79. Articulated Monkey Cane

Circa 1885-A carved glove holder with two color glass eyes, push button lower jaw, leather collar, malacca shaft and a horn ferrule-H. 4 ¾" x 3 ½", O.L. 36"
\$600-\$700

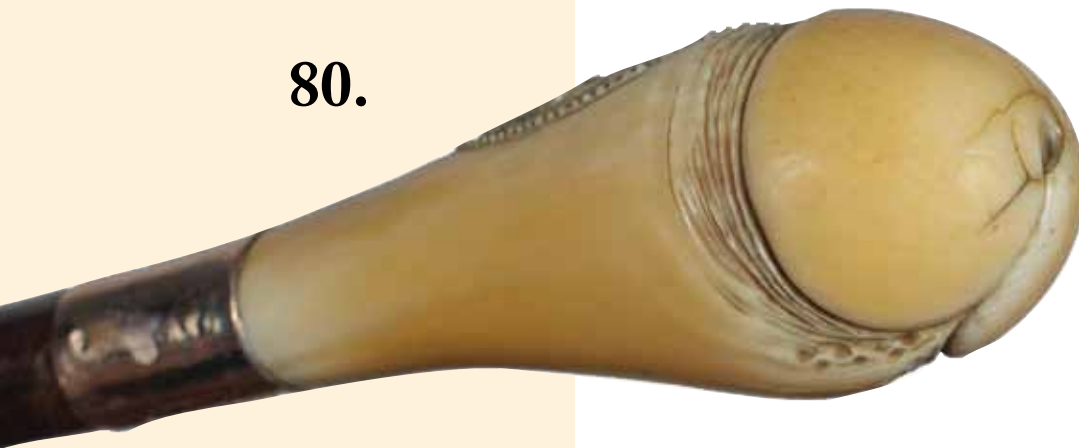
79.



80. Erotic Ivory Dress Cane

Circa 1890-A western saloon or brothel cane, fully carved nude and handle represents the shape of a penis, hallmarked 14k gold collar, well used hardwood shaft and a 3" horn ferrule-H. 3 ½" x 1 ½", O.L. 32 ½"
\$3,000-\$5,000

80.





82.

81. Bakelite Dress Cane

Circa 1930-A very unusual bakelite handle with a five leaf flower with green backgrounds, unusual polished steel collar, oak shaft and a brass ferrule-H. 2" x 1 1/2", O.L. 35 1/2"
\$500-\$600



83.

82. Rodeo Cowboy Folk Art Cane

Circa 1900-A finely carved cowboy riding a bucking horse, two color glass eyes, buffalo horn collar, ebony shaft and a metal ferrule-H. 4 1/2" x 3", O.L. 36"
\$1,500-\$1,700

83. Ivory Glove Holder Cane

Circa 1890-A wonderful carved child's cane with a push button lower jaw, beaded glass eyes, white metal collar, twigspr shaft and a brass ferrule-H. 1 3/4" x 1 1/2", O.L. 29"
\$600-\$700

84. Wood System Stick Cane

Circa 1900-Large carved handle which unscrews to view a secret compartment to hide anything you wish, brass collar, hardwood shaft and a metal ferrule-H. 5" x 2", O.L. 36"
\$250-\$350

85. Orange Bowl Map Cane

Circa 1940-An unusual souvenir from the 1940 Orange Bowl which includes a map of the stadium and the city, nice condition, metal collar, hardwood shaft and a metal ferrule-O.L. 35"
\$800-\$1,000



81.



85.



84.



86. Nautical Scrimshaw Cane

Circa 1875-A whale's tooth songbird for a handle, baleen and ivory spacers, inlaid round baleen and shell near the top, whalebone shaft and no ferrule-H. 3" x 2", O.L. 34 1/2", D. shaft 1/2"

\$1,800-\$2,200

87. Nautical Ivory Presentation Cane

Dated 1912-A carved ivory albatross with two color glass eyes, ornate British hallmarked collar by J. H., inscribed "Presented to J. T. Canton by the shipwrights on his retirement from Vickers L.D., Barrow, 18 Dec. 1912", exceptional partridgewood shaft and a brass ferrule-H. 4 1/4" x 1 1/4", O.L. 33 1/2"

\$2,500-\$3,000

88. Shibayama Japanese Ivory Dress Cane

Circa 1890-An exceptional example with 14 different insects done with various semi precious shells and stones, small silver collar with Asian characters, exotic wood shaft and a brass ferrule-H. 4" x 1 1/4", O.L. 33"

\$2,500-\$3,000

89. Carved Ebony Dog

Circa 1890-A very nicely carved dog with two color glass eyes, ornate brass collar, a very unusual twig spur ebony shaft and a brass ferrule-H. 3" x 1 1/4", O.L. 35 1/2"

\$600-\$800



89.



88.

87.

86.



90.



91.



93.



94.



92.



95.

90. Ivory Dress Cane

Circa 1890—Carved ivory handle with two color glass eyes, white metal collar, exotic wood shaft and a horn ferrule—H. 4 ½" x 1 ¾", O.L. 35 ½"

\$400–\$600

91. Mother of Pearl Dress Cane

Circa 1890—A massive piece of M.O.P., signed sterling collar, exotic wood shaft and a horn ferrule—H. 2" x 2 ¾", O.L. 36"

\$300–\$500

92. Porcelain Dress Cane

Circa 1885—A French porcelain handle with heavy gold enameling, unreadable hallmarked gold collar, ebony shaft and a bi-metal ferrule—H. 1 ½" x 1 ¾", O.L. 36"

\$400–\$600

93. M.O.P. Horse Dress Cane

Late 19th Century—A pearl handle with a gold filled end cap with two horses in very high relief, ornate gold filled collar, mahogany shaft and a horn ferrule—H. 4 ½" x 1 ½", O.L. 35 1/2"

\$400–\$600

94. Ivory Creature Cane

Late 19th Century—A carved ivory animal with two color glass eyes, white metal collar, mahogany shaft and an ivory ferrule—H. 4 ¼" x 1 ¾", O.L. 36"

\$500–\$600

95. Ivory Gator Cane

Circa 1900—A carved full length gator which is done in a very unusual style, two color glass eyes, silver style collar, hardwood shaft and a bi-metal ferrule—H. 4 ½" x 35 ½"

\$800–\$1,200

96. English Erotic Cane

Early 20th Century-A carved boxwood handle showing both male and female parts, fluted ivory collar and small horn spacer, Malacca shaft and a two piece horn ferrule-H. 6" x 2 ½", O.L. 35 ½"

\$1,000-\$1,500



96.

97. Briarwood Naughty Leg Cane

Late 19th Century-A carved wood leg with a lace up boot, ornate silver collar with British Hallmarks, ebonized shaft and a 3" horn ferrule-H. 5 ½" x 2 ½", O.L. 35"

\$500-\$700



97.

98. Gun and Spike

Defensive Cane

Late 19th Century-A Paris signed four barrel pistol with a 5 ¼" three sided pike blade signed "Vrevette, proof marks on barrel and a very small caliber, ornate engraving on spacers and slide, white metal collar, stag handle, hardwood shaft and a worn brass ferrule-H. 4 ¼" x 1 ¾", O.L. 34"

\$2,000-\$3,000



98.

99. Brass Cheroot System Cane

Circa 1890-A nice example with unreadable proof marks on the barrel, attached brass collar, hardwood shaft and a bi-metal ferrule-H. 4 ½" x 1 ½", O.L. 32"

\$500-\$700



99.

100.



100. Shibayama Ivory Dress Cane
Late 19th Century-This Japanese straight and tapering turned handle has a flowering twig and a group of insects which are masterfully carved and decorated with semi precious gem stones, ivory collar and an ebony shaft with an ivory ferrule. This piece of art speaks for itself-H. 5" x 1 1/4", O.L. 35 3/4
\$2,000-\$3,000

101. Decorative Day Cane
European late 19th Century-Bone and horn handle topped by a prone wooden rabbit, flamed rosewood shaft with metal collar and a bone ferrule.-H. 4 3/4" x 1 3/4", O.L. 35 1/4"
\$1,000-\$1,200

102. Ivory Stallions
Anglo-American Cane
19th century-Ivory tooth tip carved with six stallion heads at full speed, dark rosewood shaft and a horn ferrule.-H 5" x 3", O.L. 35 1/4"
\$2,000-\$3,000

101.



102.



103. Anglo-Japanese Cane

Circa 1890-A carved stag horn
Immortal at work embedded in the
natural shape and structure of the
horn, beaded silver collar, ebony
shaft and a metal ferrule-H. 4 1/2" x
1 1/2", O.L. 35 3/4"
\$800-\$1,200

104. London Umbrella

Walking Cane

Circa 1900-Massive Far-Eastern
silver handle chased in high relief
with 24 different mythological
deities mounted on a En-Tous-Cas
umbrella in the style of Brigg. The
umbrella nickel plated stretchers
and black silk lining intact and with
a zipped cover-H. 10" x 1 1/4",
O.L. 33 1/2"
\$800-\$1,200

105. Anglo-Ceylonese Cane

19th Century-L-shape horn
on a specimen wood washers
shaft with repeating ebony and
ivory separators. What makes
this cane very special is the
silver plated brass ferrule signed
A. VELAYUTHA ACHARIN,
METALLIST-ARTIST-ETC, and
BATTICOTTA-JAFFNA.-H. 3" x
2 1/2", O.L. 36 1/4"
\$800-\$1,200

106. French Theater Cane

Late 19th Century-Amber rosebud
knob on a stained and faceted
hardwood shaft with white metal
collar and a long horn ferrule.
Unusual presentation in a beautiful
setting-H. 1 3/4" x 1 1/2", O.L. 33 1/4"
\$800-\$1,200



105.

104.



103.

106.

109.



107.



108.



110.



107. German Dress Cane

Late 19th Century-A large T-shaped silver handle fashioned with a twist and chased with an opulent Baroque cartouche, rosewood shaft and a horn ferrule. German and 800 hallmarks -H. 3 3/4" x 2 1/2", O.L. 36 1/2" \$500-\$800

108. Jasper Dress Cane

Early 20th Century-The polished Milord handle with natural blood red color and exciting structure, rosewood shaft, metal color and a horn ferrule-H. 1 2 3/4" x 1 1/4", O.L. 39" \$500-\$700

109. French Formal Cane

Mid 19th Century-Curving silver handle well chased with leaves and a satyr head, ebonized hardwood shaft and a metal ferrule. Rarely encountered Bishop staff shape-H. 3 1/2" x 2", O.L. 36" \$800-\$1,000

110. English Automated Cane

19th Century-Boxwood duck head with lever operated beak, glass eyes and color highlights, pepper bamboo shaft with silver collar and a metal ferrule-H 2 1/4" x 1 3/4", O.L. 35 1/4" \$600-\$800

111. Reversed Ivory fist

England 19th Century-A carved ivory clenched right hand with a shirt sleeve and twist rope collar, malacca shaft and a long ivory ferrule. Unusual motif in a substantial size.-H. 2 $\frac{3}{4}$ x 2 $\frac{1}{4}$ ", O.L. 34 $\frac{3}{4}$ "

\$2,000-\$3,000

112. Ivory Dog Cane

Chester hallmarked 1902-Carved elephant ivory massive handle, ebony shaft with a metal ferrule and finely engraved silver collar. It has inset glass eyes and a well aged surface-H. 2 $\frac{1}{2}$ " x 2 $\frac{1}{4}$ ", O.L. 35 $\frac{1}{4}$ "

\$800-\$1,200

113. Austro-Hungarian Dress Cane

Circa 1880-Silver handle richly hand chased in the opulent Baroque taste and engraved O. Neumann, Bautzen, on a smooth partridge shaft with a metal ferrule-H. 4" x 2 $\frac{1}{4}$ ", O.L. 35 $\frac{1}{4}$ "

\$700-\$1,000



111.

112.

113.





114.



115.

114. Viennese Nephrite

Dress Cane

Circa 1910-Massive spinach green jade handle in an elongated, plain and fluting shape with a round top, gilt collar, rosewood shaft with a metal ferrule-H 3 1/2" x 1", O.L. 37 1/4"

\$500-\$800

115. Countryside Dog Cane

Late 19th Century-Fashioned of a live oak branch freed from its bark with an integral crook handle and steel ferrule. The handle ends with a well carved pointer head with glass eyes, ivory ears and ivory and ebony washer collar-H. 6", the dog head 2 1/2" x 1 3/4", O.L. 34 3/4"

\$600-\$900

116. Fraternity Dress Cane

19th Century, probably Russian-Well proportioned Opera silver handle finely chased with wine leaves and engraved with the commemorating dates 1875 above an 1887 on the front and a Masonic emblems on the back. Ebony shaft with a 2 1/2" tall silver ferrule. Intact-H 4 1/4" x 3 1/2", O.L. 33 3/4"

\$800-\$1,200

117. Tiger Eye Knob Dress Cane

Late 19th Century-The balls handle and collar with brown-gold petrified wood structure, rosewood shaft and a horn ferrule.-H. 2 1/4" x 2", O.L. 38"

\$500-\$800



116.



117.

118. French Erotic Ivory Cane

Late 19th Century-A sizeable ivory handle with a Pan embracing a naked Venus, ebony shaft and a metal ferrule. The depiction is well rendered with a magnificent body to the Venus and a lecherous expression to the Pan. It is ripe with symbolism and possibly meant to be an allegorical exaltation of love-H-4 ¼" x 1 ½", O.L. 35 ¾" \$6,000-\$9,000

118.





119.

121.



120.



119. Anglo-Colonial Vertebrae Cane

19th Century-Faceted staghorn handle with metal top and matching ferrule on a shaft fashioned of the spine of a cobra.-H 2 ¼" x ½", O.L. 33 ¼"
\$1,200-\$1,800

120. Stingray Tail Cane

19th Century-Fashioned of the tail of a giant Dasyatis Sephen Stingray tail with a dark greenish needle-harsh cutting surface and an impressive 9 ¾" tall barbed venom dart. The cane is topped by a silver knob and heeled with a metal ferrule-H. 1" x 1", O.L. 35 ½"
\$2,500-\$3,500

121. Tula Art Nouveau Dress Cane

Circa 1900-Fashioned in an unconventional square configuration with an integral L-shaped handle embellished with Tula silver neck and cap decorated with matching floral elements and personalized with LM initials, rosewood shaft with a perfect silver ferrule. Two tiny hallmarks attest for the Viennese origin-H. 5" x 4 ½", O.L. 36 ¾"
\$800-\$1,200

122. London Art Deco Dress Cane

Early 20th Century-Ivory and ebony layered Milord Knob, malacca shaft and a horn ferrule. Signed Kendall, one of the most respected cane makers of his day-H. 2" x 1 ¼", O.L. 35 ½"
\$1,000-\$1,500

122.

123. Early French Porcelain Cane

Early 18th Century-Saint Cloud soft porcelain knob on its malacca shaft with metal collar, eyelets and ferrule. The knob is decorated a la Berain in cobalt blue with two encircling flower panels on the side and a radiating bloom at the top. Excessively rare relic of the first period of European porcelain in original condition and with great feel of age-H. 2" x 1", O.L. 35 1/2" \$1,800-\$2,800

124. Anglo-Persian Silver Cane

Ca. 1890-A ball and stem handle deeply hand chased with intricate florals, palm wood shaft and a metal ferrule-H. 3" x 1 1/2", O.L. 37 1/2" \$300-\$400

125. Hard stone Dress Cane

Ca. 1910-Dark gray jade handle with metal inclusions, palm wood shaft with metal collar and a horn ferrule-H. 3 1/2" x 1", O.L. 37" \$300-\$500

126. Viennese Silver Dress Cane

Ca. 1890- A L-shaped handle chased with Baroque scrolls, ebonized fruitwood shaft and a horn ferrule. Two tiny hallmarks attest for the origin-H. 3 1/2" x 2 1/4", O.L. 37 1/2" \$400-\$600

127. French Labrador Dress Cane

Early 20th Century-Labrador Milord knob of a cloudy natural grey-green color with few bluish hues, Art Nouveau brass collar, fruitwood shaft and a metal ferrule-H. 2 1/2" x 1", O.L. 33" \$500-\$800

123.

127.

125.

126.

124.



130.



128.



129.



132.



131.



128. Viennese Day Cane

Late 19th Century-Heavy cast silver bear head naturalistically modeled with long snout and tiny eyes embedded in shaggy hair, smooth partridge and a metal ferrule. In the taste of Mathias Bergman who was awarded a commendation for his outstanding works at the Vienna International Exhibition in 1873-H. 2 1/2" x 1 3/4", O.L. 35 3/4" \$800-\$1,200

129. Silver Dress Cane

Late 19th Century-L-shaped silver handle delicately chased with pebbles and Baroque elements, pear wood shaft and a horn ferrule. Austro-Hungarian silver hallmarks-H-3 1/2" x 2 1/4", O.L. 35 1/4" \$300-\$500

130. Sardonyx Dress Cane

Early 20th Century-A polished grayish substantial ball handle with natural red and white layered bands framing a crystallized area, rosewood shaft and a horn ferrule-H. 1 3/4" x 1 3/4", OL. 36 3/4" \$500-\$800

131. Silver Dress Cane

Late 19th Century-L-shaped silver handle delicately chased with flowers, rosewood shaft and a horn ferrule. Austro-Hungarian silver hallmarks and some wear to the shoulder-H-4" x 3 1/2", O.L. 37 1/4" \$300-\$500

132. Paperweight Glass French Cane

Late 19th Century-Solid glass art latticino and Clichy Rose colored glass knob with integral stem, metal collar, flamed lemonwood shaft and a horn ferrule-H. 1 3/4" x 1 3/4", O.L. 34 1/2" \$700-\$1,000

133. Pair of African Clubs

Early 20th Century-The first with an ivory ball and tip and iron wood stalk, the other fashioned of a single piece of ebony. Insignia of rank, African clubs teaches about different cultures and about life struggles and cultural dancing-O.L. 20" and 18 ½"
\$400-\$600

134. French Dress Cane

19th Century- Small "Bec de Corbin" silver plated handle chased in the Empire style, fruitwood shaft and a horn ferrule-H. 2 ¼" x 2", O.L. 35 ½"
\$300-\$500

135. Hardstone Dress Cane

Ca. 1910-Honey yellow jade handle with a foggy structure, rosewood shaft with metal collar and a horn ferrule-H.3 ¾" x 1", O.L. 37 1/2"
\$400-\$700

136. Asian Ivory Dress Cane

Circa 1890-A masterpiece of Asian carving! The handle has various koi carved in very high relief and a dragon lizard attacking the fish, fish have black beaded eyes and the dragon a two color glass eye, great detail given to scales on the fish and the dragon, in our opinion a black feather represents the signature of the artist, small ivory collar, stepped exotic wood shaft and a bi-metal ferrule-H. 7" x 1 ½", O.L. 35 1/2"
\$1,500-\$1,800

137. Ivory Lion Cane

Circa 1890-Carved ivory lion with two color glass eyes, signed sterling collar, snakewood shaft and a horn ferrule-H. 4 ½" x 1 ½", O.L. 36"
\$500-\$700



136.



134.

135.

133.



137.



140.

138. Ivory Toledo Spring Hilt Sword Cane

Circa 1885-A carved ivory handle, engraved coin silver collar with the name "L. E. Basset", ornate engraved steel spring hilt, ornate signed Toledo 27" sword blade which is also engraved "O. Adam and Co. Paris, Margee", working twist mechanism, twin coin silver middle collars, malacca shaft and a bi-metal ferrule-H. 6 1/2" x 1 1/2", O.L. 34 1/2"

\$2,500-\$3,000



141.

139. Ivory Dress Cane

Circa 1890-Carved ivory handle with an initialed cartouche, ornate silver collar, faux bamboo partrigewood shaft and a bi-metal ferrule-H. 4" x 1 1/2", O.L. 36"

\$300-\$400

139.



140. Ivory Boar Dress Cane

Circa 1885-A massive carved handle done in great detail, two color glass eyes, signed sterling ornate collar, massive ebony shaft and a bi-metal ferrule-H. 4 1/2" x 2" x 1 1/2", O.L. 36"

\$1,000-\$1,500



141. Folk Art Nude Cane Late 19th

Century-A carved one piece twig spur shaft with a wild and crazy woman with two color glass eyes and a metal ferrule-O.L. 34 1/2"

\$400-\$600

138.



142. Ivory Dress Cane

Circa 1880-An unusual carved deer with two color glass eyes, signed sterling collar, exotic wood shaft and a bi-metal ferrule-H. 4" x 1 1/4", O.L. 36 1/2"
\$600-\$800

143. Silver Art Deco Dress Cane

Circa 1920-A three sided signed sterling handle, American walnut three sided shaft and a bi-metal ferrule-H. 1" x 1 1/2", O.L. 34 1/2"
\$300-\$400

144. Horse Dress Cane

Mid 20th Century-A unique silver plated handle and collar, ebony shaft and a brass ferrule-H. 3 1/2" x 1 1/4", O.L. 36"
\$200-\$300

145. Art Deco Dress Cane

Early 20th Century-A signed sterling, Gorham hallmarked dress handle, exotic wood shaft and a bi-metal ferrule-H. 4" x 2 1/4", O.L. 33 3/4"
\$300-\$400

146. Sterling Cockatoo Dress Cane

Late 20th Century-This cane is from the workshop of Charles Daugherty and is signed with the initial C. W. D., signed 925, two color glass eyes, ebony shaft and a bi-metal ferrule-H. 3" x 4 3/4", O.L. 36"
\$600-\$800

147. Ivory Eagle and Snake Cane

Early 20th Century-A unique carving with an eagle holding a coiled snake in its beak, two color glass eyes, basket weave silver collar, malacca shaft and a horn ferrule-H. 4 1/2" x 3 1/2", O.L. 36"
\$1,300-\$1,800



142.



143.



145.



146.



144.



147.



150.



148.



152.



148. Ivory Elephant Cane

Circa 1925-A unique carved ivory handle, ornate signed sterling collar, ebony shaft and a bi-metal ferrule-H. 3 ¼" x 1 ½", O.L. 36"
\$600-\$800

149. 14K Dress Cane

Circa 1930-A monogrammed signed 14k handle with minor dints and dings, mahogany shaft and a horn ferrule-H. 1 ¼" x 2 ½", O.L. 34 ½"
\$400-\$600

150. Victorian Ivory Dress Cane

Circa 1875-A carved ivory handle with oak leaves and acorns inscribed cartouche to "Marshall Allright," four small sterling collars, hardwood shaft and a bi-metal ferrule-H. 2 7/8" x 5", O.L. 37"
\$500-\$600

151. Tiffany 18k Dress Cane

Early 20th Century-Handle is signed Tiffany & Co. 8945 Makers, a few small dings in the handle, malacca shaft and a horn ferrule-H. 1 ¼" x 1", O.L. 36"
\$1,000-\$1,200

152. Asian Flick Stick Cane

Early 20th Century-An ebonized handle and shaft with a silver dragon, 3 ¾" locking flick blade and a brass ferrule-O.L. 35"
\$800-\$1,000

151.



149.

153. Ivory Dog Cane

Circa 1880-A wonderful carved dog with muzzle, beaded glass eyes, white metal collar, Malacca shaft and a bi-metal ferrule-H. 2 ½" x 1 ¾" x 2", O.L. 35"

\$1,200-\$1,400

154. Massive Ivory Dog Cane

Early 20th Century-A large carved handle with two color glass eyes, painted mouth, signed 18kt gold collar, massive malacca shaft and a large horn handle-H. 3" x 2 ¼" x 1 ½", O.L. 35"

\$1,300-\$1,600

155. Silver Dress Cane

Circa 1880-A cast solid silver handle of a man's face placed upon the mouth of a wild beast, beaded collar, ebony shaft and a horn ferrule. Probably a defensive cane.-H. 3 ½" x 1 5/8", O.L. 35"

\$500-\$700

156. Asian Ivory Dress Cane

Circa 1890-A thousand face ivory handle which is signed with Oriental black characters, unsigned ornate sterling collar, ebony shaft and a horn ferrule-H. 1 ¾" x 1 ½", O.L. 36"

\$700-\$1,000

157. Folk Art Cane

Circa 1925-A one piece carved shaft with a large lizard attacking a rabbit, very high relief carving and a small metal ferrule-O.L. 35"

\$200-\$300

158. Carved Ivory Dress Cane

Circa 1900-A carved Shakespearian style person, signed sterling collar, ebonized shaft and a long brass ferrule-H. 4" x 1", O.L. 36"

\$300-\$400



153.



156.



155.



157.



158.



159.

159. Silver Dress Cane

Early 20th Century-A unique cast solid silver handle with various hounds chasing a wild boar, thick ebony shaft and a horn ferrule-H. 4 ½" x 3 ½", O.L. 36"

\$900-\$1,200



163.

160.

160. Sterling Dress Cane

Circa 1885-A large floral cast handle, small silver collar, real bamboo shaft and a 2" horn ferrule-H. 1 ¾" x 1 ½", O.L. 33"

\$300-\$400



161.

161. Ivory Dance Cane

Circa 1930-An ivory diamond shaped handle, ebony four sided shaft and an ivory ferrule-H. 1" x ¼", O.L. 36"

\$200-\$300



162.

162. Asian Ivory Dress Cane

Circa 1890-A massive carved handle with a bushy tailed ferocious animal which is climbing among foliage, ornate silver plated collar, hardwood shaft and a bi-metal ferrule-H. 5 ½" x 1 ¾", O.L. 34 ¼"

\$1,000-\$1,500



163. Ivory Trojan Cane

Early 20th Century-Carved ivory handle with two color glass eyes, small white metal collar, exotic wood shaft and an ivory ferrule-H. 5" x 1 ¼", O.L. 36"

\$400-\$600



164.

164. Art Deco Ivory and Horn Cane

Circa 1920-A hexagonal ivory top and center horn with ivory diamond inlays, ivory collar and a horn ferrule-H. 2" x 1 ½", O.L. 35 ½"

\$500-\$600

165. Ivory Dog Cane

Circa 1885-A carved ivory dog with two color glass eyes ornate gold filled collar, mahogany shaft and a 3" horn ferrule-H. 2 ¼" x 1 ½", O.L. 35"

\$400-\$600

166. Amish Folk Cane

Mid 20th Century-A one piece carved American walnut, Amish cane-O.L. 37"

\$400-\$600

167. Pewter Sword Cane

Circa 1890-A cast pewter dog head with two color glass eyes, 27" 4 sided locking and machined blade, stepped Malacca shaft and a bi-metal ferrule-H. 3" x 2 ¾", O.L. 35"

\$800-\$1,200

168. Ivory Elk Dress Cane

Circa 1885-A nicely carved handle, two color glass eyes, ebonized shaft and a brass ferrule-H. 5" x 1 ½", O.L. 36"

\$400-\$500

169. Asian Ivory Mother and Child Cane

Circa 1890-A nicely carved ivory handle with a mother holding a child, small ivory collar, stepped Malacca shaft and a horn ferrule-H. 4" x 1 ¾", O.L. 35 ¾"

\$500-\$700

170. Silver Skull Dress Cane

Early 20th Century-A large sterling handle with touch marks which has been cast very fine, stepped Malacca shaft and a bi-metal ferrule-H. 2" x 2 ¼", O.L. 34 ¾"

\$1,500-\$1,800



166.

167.

165.

168.

170.



169.

172.



171.

171. Ivory Hunting Cane

Late 18th Century—A magnificent example of this type of carving. The handle has a hunter, deer, foliage, squirrels, dogs and other interesting items all done in very high relief, German silver disc atop, small German silver separator which is between the handle and the ornate floral ivory collar, lanyard holes, palmwood shaft and an iron ferrule—H. 5" x 1 1/4", O.L. 38"
\$1,800–\$2,200

172. Asian Ivory Dragon Cane

Circa 1890—An interesting carved ivory handle with a three toed dragon (a sign of good luck), signed sterling collar, ebony shaft and a horn ferrule—H. 5" x 1 1/2", O.L. 39"
\$800–\$1,200

173. Ebony and Ivory Dog Cane

Circa 1890—A whimsical carving with an ivory snout and an ebony head, two color glass eyes, twigs spur hickory shaft and a brass ferrule—H. 4 3/4" x 1 1/2", O.L. 33 1/2"
\$500–\$700

174. Ivory and Silver Dress Cane

Circa 1890—An ivory handle with inlaid silver circles and dots, sterling end cap which shows dents and dings, signed sterling collar, twigs spur shaft and an iron ferrule—H. 3 3/4" x 1", O.L. 32 1/2"
\$300–\$400

175. Massive Ivory Horse Cane

Circa 1875—A stylized and carved walrus handle, two color glass eyes, gold filled ornate collar, thick ebony shaft and a brass barrel ferrule—H. 6" x 4 1/2", O.L. 35"
\$1,000–\$1,500

175.



174.



173.



176. Folk Art Shoe Cane

Early 20th Century-A carved yellow pine high button shoe, handmade copper collar, oak shaft and a matching copper ferrule-H. 3" x 2 ¼", O.L. 35"

\$200-\$300

177. Pen and Pencil Gadget Cane

Circa 1925-Cane separates into three sections with a pen and reservoirs for ink, copper handle, grain painted shaft and a metal ferrule-O.L. 34"

\$250-\$350

178. Ivory Dog and Hunting Cane

Circa 1885-A walrus ivory handle with a protruding dog with one two color glass eye, hunting pouch-knife-hunting horn-gun, white metal collar, then a signed sterling collar, ebonized shaft and a bi-metal ferrule-H. 5" x 4 ¼", O.L. 37"

\$500-\$700

179. Silver and Ivory Dress Cane

Circa 1925-A silver banded and inlaid dress cane, small sterling collar, rosewood shaft and a horn ferrule-H. 1 1/8" x 1 ¾", O.L. 35"

\$300-\$500

180. 1939 World's Fair, New York Paint Decorated Cane

O.L. 36"

\$200-\$250

181. Russian Folk Cane

Circa 1935-A carved Cossack head in briarwood, small dark wood collar, heavy fruitwood shaft and an ivory ferrule-H. 3 ¾" x 1 ¾", O.L. 37 ½"

\$200-\$300



183.



182.



182. Automated Alligator Cane
 Circa 1900-Most unusual alligator carved handle with two color glass eyes, painted mouth with teeth, the button which lowers the jaw is a handle of a sword which has pierced the lower jaw, German silver collar, decorated bamboo shaft and a bi-metal ferrule-H. 3" x 2 1/2", O.L. 36"
 \$1,500-\$1,800

183. Bull Fighter's Cane
 Early 20th Century-A bull horn trophy handle, original leather collar, carved shaft with various matadors that are being attacked by bulls and a metal collar-H. 3" x 1 3/4", O.L. 34"
 \$200-\$400

184.



184. Ivory Decorated Dress Cane
 Circa 1840-A beautiful engraved and carved ivory masterpiece, various carved foliage, birds, flowers throughout the handle which has been India inked, high relief carving of a stag and his mate, engraved ivory end plate, rose gold collar, thick snakewood shaft and a brass ferrule-H. 4" x 4 1/2", O.L. 34"
 \$2,000-\$3,000



185. Silver Dress Cane

Circa 1900-A signed 800 German handle of St. George slaying the dragon, rosewood shaft and a horn ferrule-H. 4" x 1 3/4", O.L. 37"
\$700-\$900



185.

186. Ivory Dress Cane

Circa 1920-A carved ivory handle of a young man wearing a large fluted collar with smiling suns and moons throughout his pajamas, white metal collar, ebonized shaft and a metal ferrule-H. 4 1/2" x 1 1/4", O.L. 36"
\$400-\$600



186.

187. Horn Compass Cane

Early 20th Century-A working compass cane which is not scribed, brass collar, mahogany shaft and a brass ferrule-H. 2" x 1 1/2", O.L. 35 1/2"
\$300-\$400



187.

188. Skull Cane

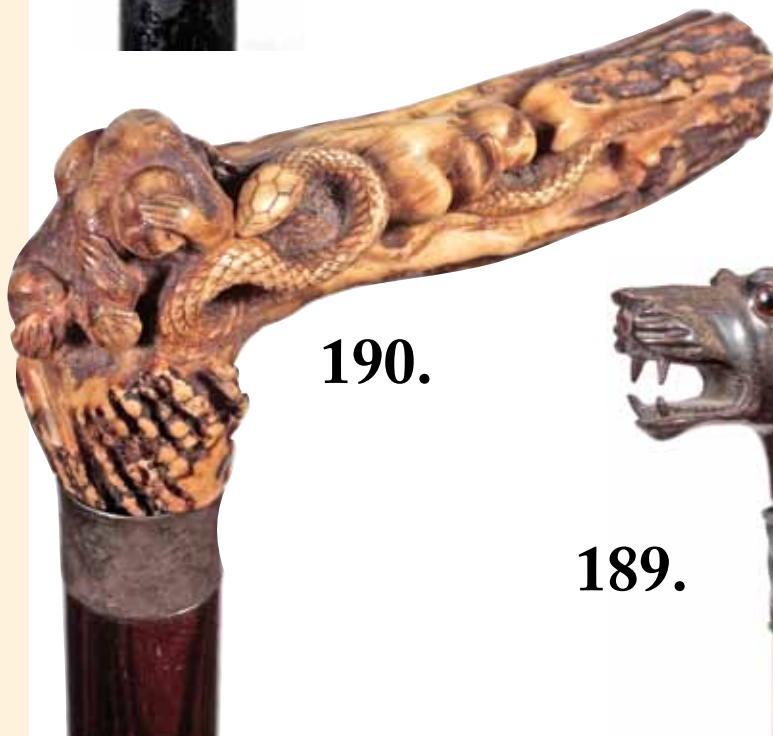
Circa 1940-An unusual composition and wood Halloween cane, automated eyes and mouth which is slowly working, bone collar, ebonized shaft and a brass ferrule-H. 1 3/4" x 1 3/4", O.L. 35"
\$250-\$350



188.

189. Horn Dog Cane

Early 20th Century-Carved horn handle with two color glass eyes, pewter swirl collar, Malacca shaft and a horn ferrule-H. 2 3/4" x 2", O.L. 37"
\$300-\$500



190.

190. Stag Monkey Cane

Circa 1890-A carved hear no see no speak no stag handle which also has a very large snake with an evil eye, white metal collar, exotic wood shaft and a stopper ferrule-H. 5" x 2 1/4", O.L. 34"
\$1,200-\$1,400



189.



192.



191.



193.



191. Intuit Walrus Cane

Early 20th Century-An entire walrus tusk has been used to make this stylized ermine handle, German silver collar, hardwood shaft and a metal ferrule-H. 12 ½" x 2 3/8", O.L. 35 ½"
\$1,200-\$1,500

192. Kabuki Ivory Cane

Circa 1890-Probably a presentation cane to a famous Japanese actor, the handle being carved in his likeness (small signed cartouche), pewter collar, carved bamboo shaft with many faces and masks which he probably wore during his life, high relief carvings and large bi-metal ferrule-H. 1 ¼" x 1 ¾", O.L. 35 ½"
\$2,000-\$2,500

193. Ivory Claw and Ball Cane

Circa 1930-A large ivory carving of an unusual claw which is done in very high relief, no collar, exotic wood shaft and no ferrule-H. 5" x 1 ¾", O.L. 38"
\$1,200-\$1,400

194. Carved Ivory Dress Cane

Circa 1880-A beautiful carved walrus handle, white metal and copper collar, exotic wood shaft and a small metal ferrule-H. 4" x 1 3/8"-O.L. 34 ¾"
\$400-\$600



194.

195. Asian Monkey Dress Cane

Circa 1890-An elongated ivory handle with three very finely carved monkeys with inked eyes and noses, hallmarked English silver collar, ebonized shaft and a bi-metal ferrule-H. 9 ¼" x ¾", O.L. 35 ½"
\$600-\$900

196. Ivory Dog Cane

Circa 1900-Carved ivory dog with two color glass eyes, silver metal collar, ebonized shaft and a bi-metal ferrule-H. 2 ¼" x 2", O.L. 36"
\$500-\$600

197. Classical Ivory Dress Cane

Circa 1820-A classic Greek carving with Apollo and other Gods, ornate carved flower atop, Malacca shaft with lanyard hole, and a metal ferrule-H. 3" x 1 ½", O.L. 33"
\$500-\$1,000

198. Carved Statesman Cane

Circa 1900-A very nicely carved handle, metal collar, exotic wood shaft with attached silver V, 04 and a bi-metal ferrule-H. 3" x 2", O.L. 35"
\$400-\$600

199. Folk Forest Cane

Circa 1900-A carved natural wood handle, with what appears to be a Viking, ivory thumb rest and end caps, reeded horn collar and a 3" stag ferrule. The nose has a small missing piece-H. 4 ½" x 9 ¼", O.L. 36"
\$400-\$500

200. Ivory and Silver Dress Cane

Dated 1928-An ivory handle encased in sterling fretwork, signed sterling collar, hardwood shaft and a horn ferrule-H. 1 ¼" x 1 ¾", O.L. 34 ¾"
\$400-\$500



195.



197.



196.



198.



199.



200.



202.

203.

201.

204.



201. Ivory Dress Cane

Circa 1875-A carved walrus ivory handle with a large walnut and what appears to be foliage style talons, ornate gold filled collar, exotic wood shaft and a two inch brass ferrule-H. 2 ½" x 1 ½" x 3 ½", O.L. 35"

\$600-\$900

202. Full Ivory Dress Cane

Circa 1900-A segmented full ivory shaft and handle which has been carved with twig spurs that have baleen inserts, nice condition, and a bi-metal ferrule-H. 4 ¼" x 2", O.L. 33 ½"

\$500-\$1,000

203. Asian Ivory Dress Cane

Circa 1890-Carved ivory dragon handle, ivory ball atop, ivory collar, exotic wood shaft and an ivory ferrule-H. 6" x 1 ¼", O.L. 35 ¾"

\$400-\$600

204. Ivory Dress Cane

Circa 1850-A large carved ivory handle, ornate coin silver collar, thick malacca shaft and a metal ferrule-H. 3" x 1 ½", O.L. 33 ½"

\$400-\$600

205. Gold Quartz Dress Cane

Late 19th Century-An ornate gold filled handle with a 2.5 to 1 gold quartz handle, ebony shaft and a horn ferrule-H. 2 ¾" x 1", O.L. 34"
\$1,200-\$1,500

206. Gold Dress Cane

Dated 1889-A gold filled ornate handle which is simply signed with a 5 pointed star, ebony shaft with lanyard holes and abi-metal ferrule-H. 1 ½" x 1 ¾", O.L. 35"
\$300-\$500

207. Cut System Stick Cane

Circa 1880-A coin silver compartment cane which is much like a hunting case pocket watch, but it has a fitted collapsible drinking cup, white metal collar, massive malacca shaft and a horn ferrule-H. 1 ¾" x 1", O.L. 35"
\$400-\$600

208. Flick Stick Cane

Circa 1880-A massive defensive heavy handle with a 6" iron pike, handle appears to be coin silver but unsigned, stepped hardwood shaft and a bi-metal ferrule-H. 2 ¼" x 2 ¼", O.L. 35"
\$1,000-\$1,500

209. Early Sword Cane

Dated 1814-A plane bell bronze handle which is engraved with the date and the initial V.S.A., lanyard holes of which one is pewter, 26" two sided blade with blood grooves, stepped hardwood shaft and a 5" brass ferrule-H. 1 ¼" x 2", O.L. 33 ½"
\$1,000-\$1,500



205.

208.

209.



209.

206.



207.



211.

212.



213.



210.



210. French Watch Cane

Circa 1850-A signed "Romilly" Paris coin silver key wind watch, thick bamboo shaft with coin silver eyelets and a 3 1/2" brass ferrule. Original key for watch-H. 2" x 2", O.L. 33"

\$1,000-\$1,500

211. Sword Cane

Circa 1885-A Malacca sword cane with lanyard eyelets, silver metal collar, two sided 24 1/2" blade signed Wilkinson, Fall Mall London, stepped Malacca shaft and a metal ferrule-H. 9" x 4 1/4", O.L. 37 1/2"

\$600-\$1,000

212. Rare Round Oak Cane Case

Circa 1900-An Oskar Onkin oak cane case in wonderful condition. The case has a lift top and also a door in the rear. There are 38 holes for canes but this case could be doubled up. The case itself is also on casters and is easily moved-D. 22 1/2", H. 44"

\$2,000-\$3,000

213. Nashville Ornate Store Cane Case

Circa 1900-An unusual oak cane case made by the Nashville Company in Nashville Tennessee which has two lift tops and an opening door in the front. It has spaces for 64 canes and cast iron, ornate feet. It is a very nice original case in its original finish.-D. 24 1/2" x 24 1/2" x 47"

\$2,000-\$3,000



211.

214. Gettysburg Round Top Cane

Late 19th Century-Civil War
souvenir cane cut from the battle
of Gettysburg Battle Ground at
the Round Top Location, pyro
decorated and never had a ferrule-

O.L. 33 ½"
\$200-\$300

215. Trench Art Folk Cane

Circa 1930-A folk art cane
constructed of ten 50 cal. Brass
shells with a brass bullet as a
ferrule-O.L. 34 ½"

\$200-\$250

216. Whistle System Stick Cane

Circa 1900-A nickel plated brass
whistle stick in working condition,
bamboo shaft and a metal
ferrule-H. 3" x 1 ¼", O.L. 32"

\$250-\$350

**217. Shooter's Stool System
Stick Cane**

Circa 1935-A leather and metal
folding seat cane in working
condition, hardwood shaft and a
spike ferrule-H. 4" x 6", O.L. 36"

\$200-\$250

218. Ivory Dress Cane

Circa 1890-A walrus ivory handle
with a tree leaf design, brass collar,
ebony shaft and no ferrule-H. 2 ½"
x 1 ½", O.L. 34 ½"

\$200-\$250

215.

214.



217.

218.

216.





219.

219. Ivory Dress Cane

Circa 1865-The carved ivory sea creature, white metal collar, Malacca shaft and a horn ferrule-H. 3" x 1 1/4", O.L. 32"

\$200-\$300



220.

220. Ivory Dress Cane

Circa 1880-A bushy tailed squirrel done in high relief, small brass collar, malacca shaft and a metal ferrule-H. 2 1/2" x 5", O.L. 32 3/4"

\$300-\$400



221.

221. Sterling Dress Cane

Circa 1885-Engraved signed sterling handle with a squirrel on a branch, exotic wood shaft and a metal ferrule-H. 1 3/4" x 7/8", O.L. 34"

\$100-\$200

Kimball M. Sterling, Inc. (TFL-1915)
125 West Market Street
Johnson City, Tennessee 37601
kimballsterling @ earthlink.net
423.928.1471

Member National Auctioneers Association
© Copyright 2010 Kimball M. Sterling, Inc.



Photography by *James Price*

Catalog Design by *KT Design, LLC*
www.kristaft.com