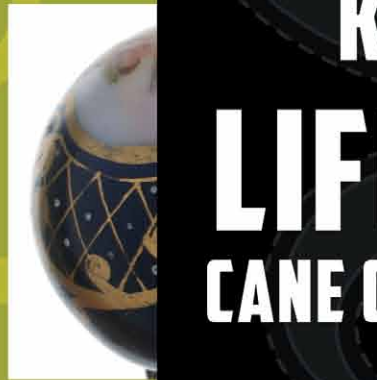


WWW.AUCTIONAUCTION.COM



KIMBALL & VICTORIA STERLING
PRESENT THE

ROBERT "BOB" N.
KAWALEC

LIFETIME
CANE COLLECTION

SATURDAY,
JUNE 9TH, 2012

11:00 A.M. EASTERN

PREVIEW
FRIDAY, JUNE 8TH
1:00-5:00 P.M. AND
JUNE 9TH AT 9:00 A.M.

KIMBALL M. STERLING, INC.
TFL-1915

TERMS & CONDITIONS

1. Cash or check. A 20% buyers' premium will be added to the hammer price as part of the sale price for all bidders. We reserved the right to hold purchases until the buyers checks clears if buyer is not known by us. Bank letter of credit is acceptable.

2. Mail or phone bids are accepted; the firm may require a deposit.

3. Kimball M. Sterling, Inc. has endeavored to catalog and describe the property correctly. All property is sold as is and neither the auction company nor the consignor will be responsible for descriptions, genuineness, provenance or condition of the property. No statement in the catalog made orally at the sale or otherwise shall be deemed to be a warranty, representation, or an assumption of liability.

4. In the event of any dispute between bidders, the auctioneer shall have total discretion to determine the successful bidder, in which his determination shall be final or to re-offer and resale the article in dispute. Title of the item or items purchased by the bidder will pass at the fall of the gavel and declaration of bidder. This is not an approval auction. All measurements are approximate.

5. Principal auctioneer: Kimball M. Sterling #2467. B. Elizabeth Sterling, auctioneer # 5757. Firm Kimball M Sterling Inc. TFL-1915

6. Bidders may bid live on the Internet by visiting <http://www.auctionauction.com> You may also view the auction at this site and bid by phone.

7. Communications:

Telephone 423-928-1471.

Fax 423-928-2816.

Cellular 423-773-4073, 423-773-4072.

Email kimballsterling@earthlink.net

8. Kimball M Sterling has worldwide shipping available. Mr. We do not ship protected items overseas but can put you in contact with a source that is very reliable and can handle all of your needs.

9. Kimball M. Sterling, Inc. will not be held responsible for bids received on the day of the auction, unexecuted absentee bids, phone bidders not contacted or slow Internet bids. Although we do attempt to get all bids executed problems do occur. There will be no recourse from the bidder. We will not be responsible for items left on our location for over 30 days.

10. Sale will be conducted at 125 West Market Street, Johnson City, Tennessee. 37604. Announcements day of the sale take precedence over pre-sale advertising. Any litigation that pertains to this auction will be conducted in the county of Washington in Tennessee and is agreed upon by registering for this auction.

11. Airport is the Tri-Cities Airport, which is approximately 20 miles from the gallery. Internet catalog and live bidding available at www.auctionauction.com Best Western Hotel: 423-282-2126. A very fine hotel which offers Sterling Auction a discount rate is the Carnegie Hotel 1216 W State of Franklin Rd, (423) 979-6400.

12. Please call for condition report on sale lots or email us. We do send out multiple photos by email of any lot in the auction. By registering for this auction you accept the terms.

13. Parking service is free.



KIMBALL M. STERLING AUCTION GALLERY
125 WEST MARKET STREET
JOHNSON CITY, TENNESSEE 37601
KIMBALLSTERLING@EARTHLINK.NET
423.928.1471

KIMBALL & VICTORIA STERLING
PRESENT THE

ROBERT "BOB" N.
KAWALEC

LIFETIME CANE COLLECTION

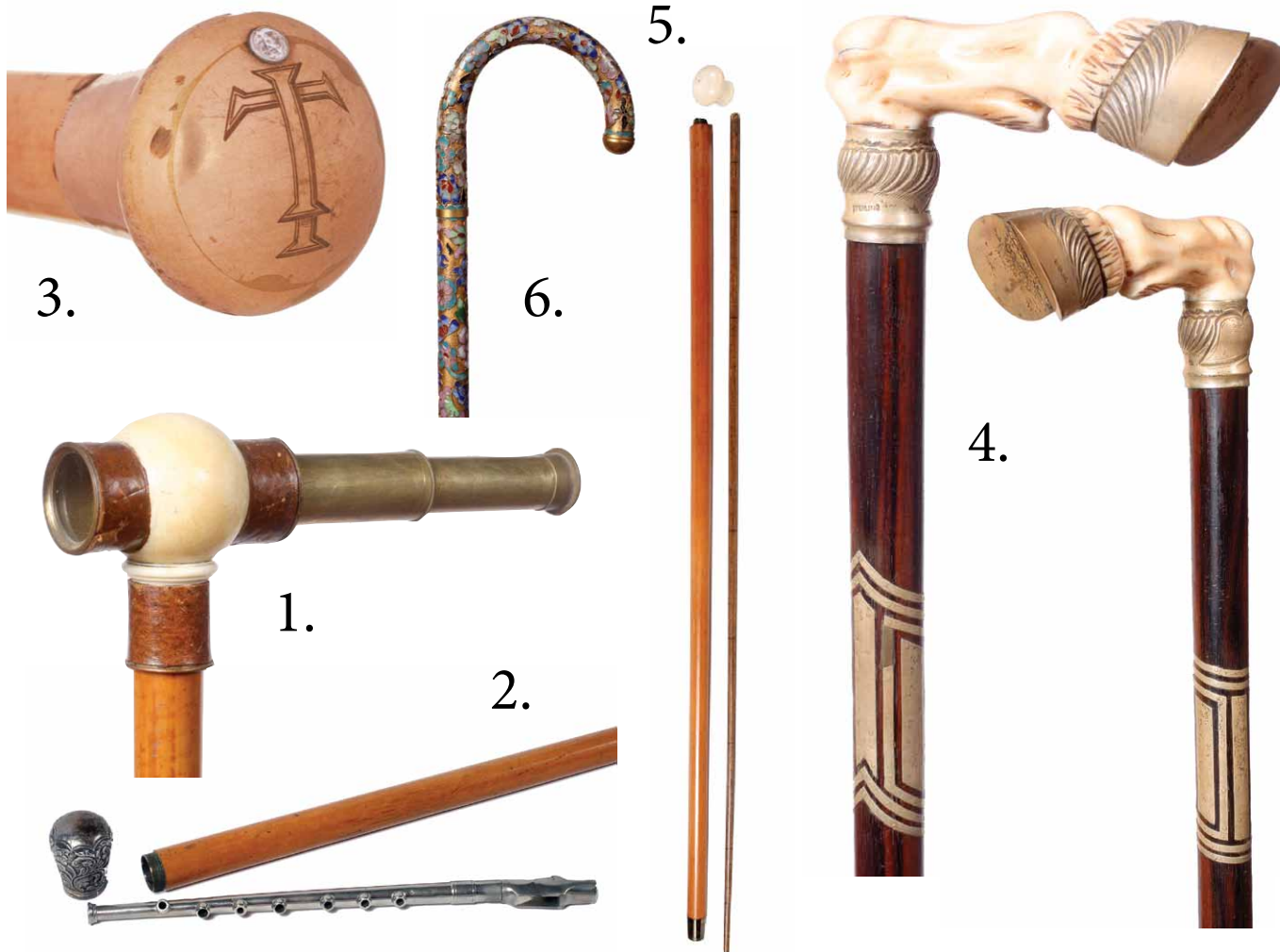
SATURDAY,
JUNE 9TH, 2012

11:00 A.M. EASTERN

PREVIEW
FRIDAY, JUNE 8TH
1:00-5:00 P.M. AND
JUNE 9TH AT 9:00 A.M.

LIVE ON THE INTERNET AT
LIVEAUCTIONEERS.COM
TWO TIME WINNER OF BEST OF SHOW
FROM THE NATIONAL AUCTIONEERS ASSOCIATION

KIMBALL M. STERLING, INC.
TFL-1915



**1. Ivory and Brass
Telescope Cane**

Late 19th Century-An ivory ball handle, two draw brass telescope, leather covered, ivory and leather collar, Malacca shaft and a metal ferrule-telescope is 7 ½", H. 3 ½" x 2", O.L. 34"
\$500-\$800

2. Flute System Stick

Late 19th Century - An ornate silver plated handle, 12" nickel silver flute, thick Malacca shaft and a 2" horn ferrule-H. 1 ½" x 2 ¼", O.L. 35 ½"
\$500-\$700

**3. Gold and Diamond
Dress Cane**

Circa 1885-A 9 kt gold handle with very minor dings and dents, 15 pt. European cut diamond, engraved cross, made by Swaine and Adeney, Malacca shaft and a horn ferrule-H. 1 ¼" x 1 ¼", O.L. 37"
\$400-\$600

**4. Ivory and Sterling Horse
Hoof Cane**

Late 19th Century-A realistic carved ivory handle with a signed sterling hoof, ornate signed collar, sterling inlaid lignum vitae shaft and a horn ferrule-H. 4 ½" x 1 ¼", O.L. 35"
\$500-\$1,000

5. Ivory Rule System Cane

Late 19th Century-Ivory knob handle, 36" wood measuring device, thick Malacca shaft and a brass ferrule-H. 3 ¾" x 1 ¾", O.L. 37"
\$400-\$600

6. Enameled Dress Cane

Circa 1960-A nicely crafted full enameled shaft and handle, probably Chinese and brass ferrule-H. 5" x 5", O.L. 35"
\$250-\$400



7. Harmonica Cane

Circa 1910-An original harmonica handle in working condition done in gun metal, white metal collar, honey Malacca shaft and a metal ferrule-H. 4 ¼" x 3", O.L. 34" \$500-\$800

8. Umbrella System Cane

Circa 1925-A working maple example, black silk umbrella, engraved sterling collar, telescoping shaft and a horn and pike ferrule-H. 6" x 5 ¼", O.L. 34 ½" \$250-\$400

9. London Scale Cane

Late 19th Century-A bell bronze handle which has a troy weight hanging spring scale, large bell bronze collar, ebonized shaft and a brass ferrule-H. 4" x 3", O.L. 37" \$400-\$600

10. Flashlight System Stick

Circa 1925-A Malacca and bakelite flashlight cane, bakelite collar and a horn ferrule-H. 5" x 6", O.L. 36" \$350-\$550

11. French Watch Cane

Mid 20th Century-A gold-filled push button spring handle, Barillet watch, ebony shaft and a horn ferrule-H. 1 ¼" x 2 ½", O.L. 34" \$400-\$700

12. French Flute Cane

Circa 1870-Engraved brass handle, small brass collar, metal upper shaft with 6 key holes, worn paint decorated lower shaft with no ferrule-H. 1 ¼" x 1 ½", O.L. 32" \$300-\$500

13. Opium Pipe Cane

Mid 20th Century-A nickel and wooden pipe system cane, alternating wood spools and spacers, and a nickel ferrule which unscrews-H. 4" x 1", O.L. 35" \$300-\$500

14. Lawn Bowling Cane

Dated 1923-An original wood and ivory ball, fluted sterling collar, exotic wood shaft and no ferrule-H. 2" x 2", O.L. 33" \$300-\$500



15.



19.



16.



18.



20.



17.

15. Group of Eight Canes Including World's Fair Map, Folk Art and German Hiking Canes Etc. in various condition
\$250-\$400

16. Thirty Nine Star American Flag System Cane
Early 20th Century-A carved ball handle with a copper Pegasus atop, cotton American flag, white metal collar, hollow maple shaft and a white metal ferrule
H. 1 1/2" x 1 1/2", O.L. 36"
\$400-\$600

17. Indian Sword Cane
20th Century-A wood and bone handle, ornate brass collar, 23" blade, ebonized shaft and a stopper ferrule-H. 4 1/2" x 3 1/4", O.L. 34"
\$150-\$300

18. Horn "Man in the Moon" Cane
Early 20th Century-A carved horn handle, ornate engraved brass collar, partridge wood shaft and a metal ferrule-H. 2 1/2" x 3 1/2", O.L. 37"
\$400-\$600

19. Pewter Erotic Nude Cane
Early 20th Century-A well cast pewter handle of a reclining nude, brass collar, ebony shaft and a horn ferrule-H. 3" x 3", O.L. 34 1/2"
\$300-\$500

20. Sterling Shaving Brush System Cane
Early 20th Century-A British hallmarked handle and brush, horsehair bristles in fine condition, very thick Malacca shaft and a 2 1/4" horn ferrule-H. 1" x 3", O.L. 36"
\$500-\$1,000

21. Fishing Pole System Cane
Early 20th Century-A white metal top and collar, cane makes a 9 foot fishing pole, bamboo shaft and a white metal ferrule
H. 1 1/4" x 3/8", O.L. 36"
\$200-\$400



21.



22.



24.



25.



23.



26.



27.



22. Ivory Kris Dress Cane

Circa 1885-A unique carved Far Eastern handle, ivory collar, exotic wood shaft and a metal ferrule

H. 3 ¼" x 2 ¼", O.L. 37"

\$600-\$900

23. Asian Bone Dress Cane

Circa 1935-A full bone dress cane which has various animals and foliage carved and then painted with India ink, an Asian man holding a dog and an original brass ferrule-O.L. 36"

\$400-\$700

24. India Sword Cane

Circa 1885-A horn and bone handle with a brass lion atop, 23" blade, brass collar, exotic wood shaft and a brass and iron ferrule

H. 5" x 1 ¼", O.L. 35"

\$300-\$500

25. Ivory Beaded Dress Cane

Early 20th Century-A carved ivory handle with a 2 ½" section of glass beads, two small gold collars, original lanyard, exotic wood shaft and a horn ferrule

H. 4 ½" x 1 ½", O.L. 37 ½"

\$500-\$1,000

26. Flick Stick Cane

Circa 1860-A nice early example with a 3 ¾" locking pike, exotic burl handle, Malacca shaft and a 1 ½" original brass ferrule

H. 4 ½" x 2", O.L. 37 ½"

\$700-\$1,200

27. Sundial and Compass System Cane

Circa 1975-A molded composition handle which has a fold-up sundial and a compass, maple shaft and a brass ferrule

H. 1 ½" x 2 ¼", O.L. 36"

\$200-\$300



31.



28.



30.



29.



32.



33.

28. Tippler's Cane

Circa 1975-A composition faux antler cane which contains a glass vial, composition collar, composition shaft and a metal ferrule-H. 1 ½" x 2 ½", O.L. 36"
\$150-\$250

29. Porcelain Dress Cane

Late 19th Century-A well executed painted porcelain handle with heavy Morige work, ornate brass collar, ebony shaft and a horn ferrule-H. 1 ½" x 1 ½", O.L. 35 ½"
\$400-\$600

30. Perpetual Calendar and Postal Rate Cane

Late 19th Century-An unusual handle which is in fine condition and readable with early postal rates for various items, measures both in English and French, brass collar, ebonized shaft and a metal ferrule-H. 9" x 1", O.L. 38"
\$600-\$1,000

31. Chicago World's Fair Metal Cane

Dated 1934-An extremely hard to find all metal souvenir cane from "A Century of Progress" World's Fair in Chicago H. 4 ½" x 4", O.L. 30 ½"
\$400-\$500

32. Asian Nude Ivory Cane

Circa 1935-A nice original carved ivory handle with 12 nudes, India inked cap and hair, bamboo shaft with carved rats and three different sets of Asian character letters and a brass ferrule-H. 2 ½" x 1 ¾", O.L. 36 ½"
\$600-\$900

33. Ivory Gambler's Stick

Early 20th Century-A container cane which as a bone dice cup and various gambling chips, British Hallmarked collar, faux bamboo shaft and a metal ferrule H. 1 ½" x 3 ½", O.L. 36 ½"
\$600-\$900



35.



34.



37.



36.



38.

39.

34. A Group of Seven Various Canes

\$200-\$400

35. Silver Court Cane

Circa 1750-Coin silver handle and mid collar, Malacca shaft and a 5 1/2" iron ferrule

H. 1 1/2" x 2", O.L. 52"

\$700-\$1,000

36. Nautical Dress Cane

Circa 1870-An ornate silver plated handle which has two ship anchors atop, massive 1 1/4" Malacca shaft and a metal and stopper ferrule

H. 1 1/2" x 1 3/4", O.L. 34"

\$300-\$500

37. Bone System Cane

Mid 20th Century-A carved probably Asian bone compartment handle, four precise instruments within the hardwood shaft and a brass ferrule-H. 3" x 1 3/4", O.L. 36"

\$300-\$500

38. Stanhope, Pen and Pencil System Stick

Early 20th Century-A three piece shaft which contains a Stanhope of a building in Jerusalem and a pen and a pencil, fine firm condition and a brass ferrule O.L. 34"

\$400-\$600

39. Pen and Pencil System Stick

Circa 1925-A unique grain painted shaft which has a fountain pen, lead pencil and a glass vial for ink, copper handle and a metal ferrule-O.L. 36"

\$400-\$600



40.

41.



43.

44.



42.



45.

40. Picnic System Cane

Circa 1875-A natural branch handle and shaft which contains a knife and fork which separate with a locking mechanism, early black varnish and an original brass ferrule, utensils are 9" long with handles

H. 6" x 1 1/4", O.L. 37 1/2"

\$700-\$1,200

41. System Shooting Stick

Circa 1950-A near mint example of a shooting or parade cane with leather covered handles, maple shaft and a stopper ferrule

O.L. 36"

\$150-\$250

42. Shimbayama Dress Cane

Dated 1910-A nice example with various mother of pearl horn a tortoise inlay, pearl butterfly, hallmarked British collar, ebony shaft and a horn ferrule

H. 4 1/2" x 2", O.L. 35 1/2"

\$1,000-\$1,500

43. Ivory Stanhope Cane

Dated 1875-A souvenir from the Philadelphia Art International Exhibition with a Stanhope of Fairmont Park, small brass collar, flexible maple shaft and a bone ferrule-H. 3" x 1 1/2", O.L. 31"

\$300-\$500

44. Cigar System Stick

Mid 20th Century-A cigar system stick which has a lighter and glass tubes for cigar storage, brass handle and collar, metal shaft, spring loaded brass ferrule-O.L. 34 1/4"

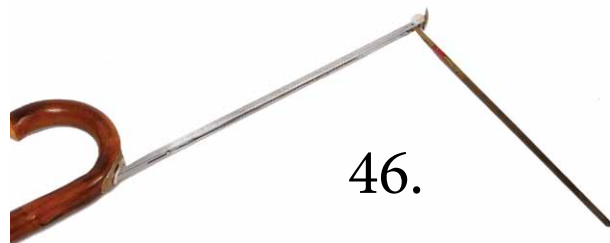
\$300-\$500

45. Glass Cutter's System Stick

Circa 1900-A coin silver handle with British hallmarks, Chance and Co., Malacca shaft and a metal ferrule.

H. 1 1/2" x 2", O.L. 34"

\$400-\$600



46. Horse Measure Cane
 Early 20th Century-Hallmarked English silver top, metal horse ruler with working level, thick twig spurs shaft and a brass ferrule. O.L. 37"
 \$350-\$500

47. Fan System Stick
 Circa 1860-A silver plated hinged and locking top, hollow burl upper shaft which holds a fan in poor condition, silver collar, exotic wood shaft and a horn ferrule.
 H. 1" x 11 3/4", O.L. 31"
 \$400-\$600

48. British Military Marching Cane
 Ca. 1895-A prime example of a pace measuring device for the military, brass handle, a pair of double pacing sticks, stepped oak shaft and a 3" iron ferrule.
 H. 1 1/2" x 3", O.L. 38"
 \$500-\$700

49. U.S. \$5.00 Gold Coin Dress Cane
 Late 19th Century-A gold coin and ivory handle with horn spacers, hexagonal two-cylindrical hard wood shaft (small spacer missing where they join) and an ivory ferrule.
 H. 1" x 2 1/4", O.L. 38"
 \$500-\$800

50. Fishing Pole System Cane
 Circa 1925-Bamboo two section five foot sectional pole, carved shaft and a large bone ferrule.
 O.L. 34"
 \$300-\$500

51. Chinese Ivory Dress Cane
 Circa 1900-A dragon carved handle, inlaid Chinese coin atop, exotic wood shaft and a horn ferrule. H. 2 1/2" x 1", O.L. 35 1/2"
 \$400-\$500



52.



53.



54.



55.



56.

52. 1930 Worlds Fair Cane
This cane retains its original red and blue paint and also its original fair decal and a metal ferrule. H. 1 ½" x 1 ½", O.L. 33"
\$100-\$200

53. Gold Dress Cane
Mid 19th Century—"Victorle Vel Mors" is engraved with a mans picture atop, the cane once belonging to Alex Edington, gold eyelets, honey Malacca shaft and a metal ferrule, minor dents and dings in handle. H. 1 ¼" x 2", O.L. 34 ½"
\$500-\$1000

55. Group of Four Various Canes
\$200-\$400

56. Asian Ivory Day Cane
Circa 1925—Carved ivory ball handle, small ivory collar, carved and signed bamboo shaft with a large bird and foliage and a metal ferrule. H. 1 ½" x 1 ½", O.L. 31 ½"
\$300-\$400

54. Group of Five Various Canes
\$200-\$400



59.

61.



60.



62.



57.



58.



57. Silver Dress Cane

Circa 1890-An art nouveau handle, silver plated collars, stepped maple shaft and a metal ferrule. H. 5" x 1 1/2", O.L. 24"
\$150-\$250

58. Wikeham Weed Fradicator Cane

Late 19th Century-A solid brass weed removal cane, removable brass top and a removable brass ferrule which exposes a device to eradicate weeds with. O.L. 32 1/2"
\$400-\$600

59. Gold Gamblers Cane

Circa 1900-A rose gold handle which contains three miniature dice, malacca shaft and a 2" ivory ferrule. H. 1" x 3", O.L. 34"
\$500-\$700

60. Drum Majors Cane

Early 20th Century-A white metal original drum majors baton or cane (with original baton book), original wrappings with tassel and a metal ferrule. H. 4" x 6", O.L. 40"
\$300-\$500

61. Perfume Bottle Cane

Circa 1875-A quality ruby red perfume bottle with an ornate hinged brass lid, metal collar, ebony shaft and a metal ferrule. H. 5" x 1 1/4", O.L. 35 1/2"
\$500-\$1000

62. Whales Tooth Cane

Circa 1900-Whales tooth handle, stacked horn shaft and a 2 1/2" brass ferrule, H. 1 1/4" x 3 1/2", O.L. 35"
\$400-\$600



63. Glass Parade Cane
 Circa 1930-A solid and twisted full glass cane with original tip. O.L. 34"
 \$150-\$250

64. Compass System Cane
 Early 20th Century-A working white brass spring loaded compass, ebony shaft and a brass ferrule. H. 1 3/4" x 2 1/4", O.L. 35 1/4"
 \$400-\$600

65. Pipe System Cane
 Circa 1935-A burl handle with bark, cheroot device, copper collar, exotic wood shaft and a metal ferrule. H. 1" x 2", O.L. 36"
 \$400-\$600

66. Bull Penis Cane
 Circa 1940-Two black rubber end caps and is in good condition. O.L. 36"
 \$250-\$350

67. "La Canne Objet D'Art" by Catherine Dike and Guy Bezzaz
 \$100-\$200

68. "Cane Curiosa, From Gun to Gadget" by Catherine Dyke. Also inside is a personalized Christmas card from Catherine Dyke.
 \$200-\$400

69. Elephant Spitting Cane
 Circa 1925-A silver plated elephant handle which has a push button spitting mechanism in its shaft, the mechanism is working fine and the water shoots from the trunk to about a three foot distance, bamboo shaft and a metal ferrule. H. 3 1/2" x 2 1/2", O.L. 33 1/2"
 \$800-\$1200

70. "Canes, From the Seventeenth to the Twentieth Century" by Jeffrey B. Snyder.
 \$50-\$75

73.



71.



75.



72.



74.



76.



71. Democratic Party Cane
Circa 1950-A pewter handle with a donkey atop and the words "The Party of the People", ebonized shaft and a metal ferrule.
H. 2" x 2 1/2", O.L. 36"
\$200-\$300

73. Perfume Bottle System Cane
Circa 1880-Sterling silver ornate top, trapezoid amethyst glass bottle, patented G.B. Sterling handle, Malacca shaft and no ferrule.
H. 1" x 3 1/2", O.L. 38"
\$800-\$1000

75. "Spazierstöcke" by Ulrich Klever.
This book is in excellent condition and is still in original shrink wrapping.
\$75-\$150

72. A collection of fourteen various children's canes and military swagger sticks
\$500-\$1000

74. Frog Defensive Cane
Circa 1940-A cast bronze frog handle with a crab attacking the frogs feet, exotic wood handle and a metal ferrule.
H. 3 1/2" x 1 1/4", O.L. 37"
\$400-\$600

76. Ivory Skull Cane
Circa 1900-A folkly carved ivory skull, exotic wood shaft and metal ferrule. H. 1 1/4" x 2", O.L. 34 1/2"
\$400-\$500



77. Cork Screw System Cane
 Early 20th Century—A nicely carved monk with two colored glass eyes, 3” brass and iron cork screw, brass collar, exotic wood shaft and a metal ferrule. H. 1 ¾” x 2”, O.L. 32 ½”
 \$500–\$700

78. Folky Hiking Cane
 Circa 1930—An ugly but adorable composition handle, twig spur shaft with one hiking badge and a pike ferrule. H. 3” x 2 ¼”, O.L. 36”
 \$200–\$300

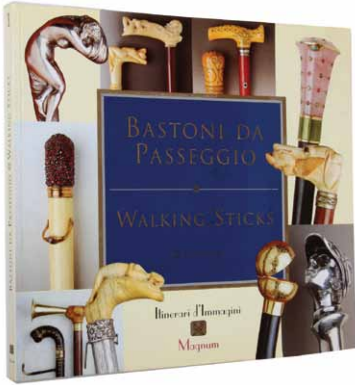
79. Moroccan Sword Cane
 Circa 1940—Leather covered handle and shaft, 23” metal blade and a metal ferrule. H. 5” x 7 ½”, O.L. 35”
 \$200–\$300

80. Outsider Art Cane
 1992—A signed Calvin Cooper “Crazy Chicken Bird”, with original paint and near mint condition. H. 6 ½” x 5 ½”, O.L. 36”
 \$150–\$250

81. Native American Game Cane
 Circa 1970—A one piece maple snowflake Iroquois game cane with a pewter “Orion” style ferrule. O.L. 36 ½”
 \$100–\$200

82. Sea Shell Dress Cane
 Circa 1930—A shell dress cane, exotic wood shaft and a metal ferrule. H. 2” x 3”, O.L. 32 ½”
 \$100–\$200

83. Carnival Cane
 Circa 1940—A porcelain dice handle, blue painted hardwood shaft and no ferrule. H. 2” x 1 ½”, O.L. 35 ¼”
 \$50–\$100



84.

86.

88.

84. "Bastoni Da Passeggio",
by Alfredo Lamberti. This is a
paperback copy
\$75-\$150

85. Gun Cane
Circa 1930-Oak crook handle, single
shot spring mechanism, probably a
9 mm, barrel unscrews from handle
to load and stopper ferrule. H. 4 ½" x
4", O.L.35"
\$1000-\$2000

87.



89.

**86. Hunting Stool
System Stick**
Circa 1900-Maple crook handle,
burlap seat with minor damage to
one corner, maple shaft, metal rungs
and a screw ferrule
H. 5" x 5 ½", O.L. 33 ½"
\$150-\$250

87. Carved Folk Art Cane
Circa 1885-Natural antler handle,
coin silver collar and eyelets, cherry
shaft which has various hound dogs
chasing a deer followed by a man on
a horse back holding a bugle and a
bi-metal ferrule
H. 3" x 1 ¾", O.L. 34 ½"
\$400-\$600

89. Ivory Bull Dog Cane
Circa 1900-A carved ivory dog
with two color glass eyes, ribbed
metal collar, stained bamboo
shaft and a metal ferrule-H. 1 ¾"
x 1 ½", O.L. 34 ½"
\$400-\$500

85.

**90. "Les Canes" by Pierre
FaveTon**
\$75-\$150



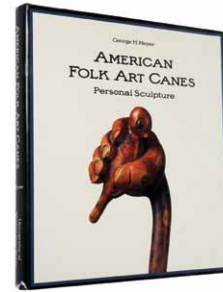
88. Ivory Dress Cane
Circa 1920-An ivory crook handle,
silver metal collar, twig spur
ebonized shaft and a bi-metal ferrule
H. 3" x 2 ½", O.L. 33"
\$300-\$400



94.



91.



92.



96.



95.



93.



97.

91. Garden Market Basket Cane

Early 20th Century-A nice example in fine condition, hickory shaft and a rattan wrapped basket, pike iron ferrule, basket is 10" x 7", O.L. 39"
\$300-\$500

92. "American Folk Art Canes"
by George H. Meyer
\$75-\$150

93. Carved Fist Cane

Early 20th Century-A carved fruitwood clinched fist, hallmarked British collar, fruitwood shaft and no ferrule-H. 3" x 2", O.L. 35"
\$200-\$300

94. "Large Cane Designer Ledger and Design Book"

Early 20th Century- Approximately 100 page ledger of various designs of cane handles all written in German. Each page could be framed as a piece of art work
\$400-\$800

95. Black Forest Carved Cane

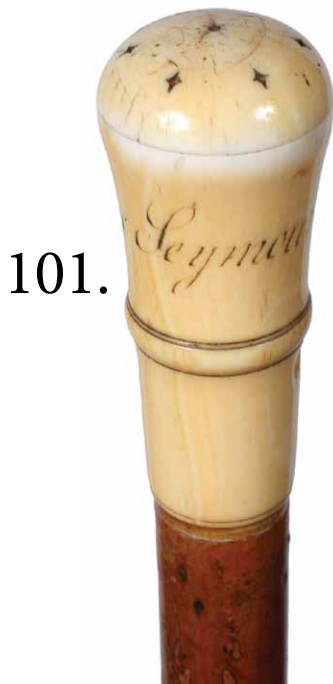
Early 20th Century-A carved gnome in his hat who is shining his shoe, natural tree branch shaft with bark and metal ferrule-O.L. 37"
\$300-\$500

96. Al Makila Purveyors Cane

Circa 1960-A cast metal top, various locations attached to the shaft and a brass ferrule
H. 6" x 1 1/4", O.L. 30
\$250-\$350

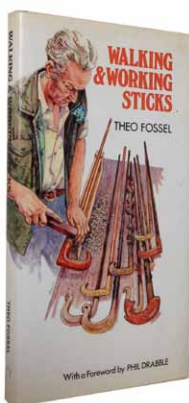
97. Pencil System Stick Cane

Late 19th Century-Copper removable top which has a reservoir to keep pencil lead, removable mid shaft which holds a pencil, twig spur shaft and a metal ferrule.
H. 1 1/2" x 1 1/2", O.L. 35"
\$300-\$400



101.

100.



102.



99.



98.



103.



98. Flashlight System Stick
 Circa 1900-An exotic wood handle with a bronzed metal of a man pulling a rope atop, leather covered flashlight, British hallmarked collar, partridge wood shaft and a brass ferrule. H. 4 1/4" x 1", O.L. 38"
 \$400-\$600

99. Gold Filled Dress Cane
 Early 20th Century-A W.O.W. presentation cane made by Simmons, ebony shaft and a bi-metal ferrule. H. 1 1/4" x 1 1/4", O.L. 35"
 \$250-\$350

100. Canes and Working Sticks by: Theo Fossel. Hardbound and autographed copy and a walking stick made by Mr. Fossel for the collector.
 \$50-\$100

101. Ivory Pomander Cane
 Circa 1820-An original ivory handle engraved Jesse Seymour. Seven scent holes atop, carved lanyard holes, thick Malacca shaft and a 2 1/2" iron ferrule. H. 3 1/2" x 1 1/2", O.L. 35"
 \$500-\$800

102. Chinese Carved Cane
 Circa 1900-Carved portrait handle, silver collar, stained bamboo shaft and a worm eaten horn ferrule. H. 7 1/2" x 1 3/4", O.L. 37"
 \$200-\$300

103. Asian Sword Cane
 Circa 1930-Carved wood handle, 18" blade, push button mechanism, brass collar, chip carved hardwood shaft and no ferrule. H. 5" x 6 1/2", O.L. 36"
 \$200-\$400



104.



105.



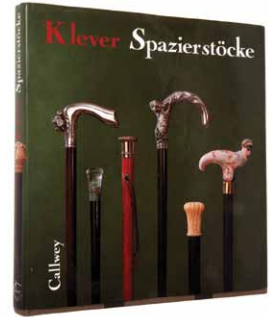
106.



109.



110.



107.



108.



111.



104. Ivory Dress Cane

Circa 1920-An ivory and exotic wood handle with horn spacers, mahogany shaft and a horn ferrule. H. 4" x 3", O.L. 34 1/2" \$250-\$400

105. German Military Cane

Circa 1925-A cast metal top with the words "Grinnerung Own Mpine Dienhzft" and a German helmet with cannons, woven shaft cover and a metal ferrule. H. 1 3/4" x 1", O.L. 36" \$300-\$500

106. Measuring Stick Cane

Late 19th Century-Kerby and Davidson NY measuring device, small metal top, marked for measuring lumber, hexagonal hardwood shaft and a brass ferrule. H. 1 1/4" x 1", O.L. 36" \$200-\$300

107. Oak Cane Display Case

Ca. 1900- A 100 cane golden oak case, stepped bottom with stick and ball work. Front and rear opening doors, on castors. 48" x 24" x 25" \$1000-\$1500

108. Erotic Horn Cane

Mid 20th Century- Carved horn handle of a couple, white metal collar, twisted branch shaft and a metal ferrule. H.-3"x 4.5" O.L.- 38" \$400-\$600

109. Brigg and Sons and Henry Howell and Co. copy catalog.

\$40-\$80

110. "Spazierstocke" by Ulrich Klever. This book is in excellent condition.

\$75-\$150

111. Wood Country Cane

Late 19th Century-A massive one piece hardwood cane with the initials F.D. carved in the handle and a metal ferrule. O.L. 36" \$150-\$250



112. Continental Wax Seal Cane
 Late 19th Century-A bronze wax seal "Anauda Delpto De Man Sanillo", exotic wood shaft and a tape ferrule.
 H. 1 ½" x 1", O.L. 34 ½"
 \$400-\$600

113. A Group of Five Canes
 \$200-\$400

114. Measuring System Cane
 Circa 1900-A locking handle which exposes a small brass instrument, brass hexagonal collar, hexagonal hard wood shaft marked for measuring lumber and a brass ferrule. H. 1" x 1", O.L. 36"
 \$300-\$500

115. Puzzle Cane
 Circa 1935-A folk art ball and cage cane with two milk glass marbles and no ferrule. O.L. 36"
 \$100-\$200

116. Group of Four Canes
 \$150-\$250

117. Group of Four Canes
 \$100-\$300

118. Massive Ivory Dress Cane
 Circa 1875-A lathe turned ivory handle, massive Malacca shaft and a metal ferrule.
 H. 2 ¼" x 4", O.L. 35 ½"
 \$800-\$1200

119. Group of Four Canes
 \$150-\$250



121.



120.

122.



126.



123.



124.

120. Pump System Cane
Early 20th Century- An unusual system stick with pumping button and brass lighted balloon end, maple shaft and stopper ferrule. O.L.- 36"
\$200-\$300

121. Group of Four Canes
\$150-\$250

122. Lumber Measuring Cane
Circa 1900-a small bronze hexagonal handle and oak hexagonal shaft and a brass ferrule. O.L. 36"
\$200-\$300

123. Group of Three Canes
\$150-\$350

124. Ivory Dress Cane
Late 19th Century-An ivory tau handle with normal striations, coin silver collar, ebony shaft and a 3" replaced ferrule. H. 4 x 1 3/4", O.L. 30"
\$250-\$350

125. Stag Country Cane
Late 19th Century-A homemade twirling handle, white metal collar, hexagonal oak shaft and a metal ferrule. H. 5 1/2" x 3/4", O.L. 32 1/2"
\$150-\$250

126. Gay Shotgun Gun Cane
Late 19th Century-Split buffalo horn handle , engraved brass collar which is a twisting mechanism that drops the trigger, gun cocks when it is open, fine working condition, exotic wood and metal shaft and a stopper ferrule. H. 4 1/4" x 3", O.L. 35"
\$1300-\$1800



113.



130.



132.



129.



134.



133.



128.



131.



127.



135.



127. Ivory Dress Cane

Dated 1905-A nice ivory handle, hallmarked silver British Collar J. H., ebony shaft and no ferrule. H. 4" x 1 1/4", O.L. 35 1/2. \$150-\$250

128. Malacca Day Cane

Early 20th Century- A one piece thick Malacca shaft, silver cartouche by Henry Howell, hallmarked silver collar and a horn ferrule. H. 6" x 7", O.L. 35 1/2" \$200-\$350

129. Ivory Dress Cane

Circa 1925-An oval top ivory handle, small gold collar, ebony shaft which is inscribed "Jim S. Cobb" and a horn ferrule. H. 1 1/4" x 3/8", O.L. 35" \$250-\$350

130. Tipplers Stick

Circa 1925-The cane has two compartments with a flask in the lower, brass handle and collar, maple shaft and a metal ferrule. H. 1" x 1", O.L. 34 1/2" \$150-\$250

131. Pair of Silver Dress Canes

Circa 1920-One had a small split in its handle, the other is a Brigg with minor dints and dings but has a very thick snake wood shaft. Average O.L. 35" \$200-\$400

132. Horn Dress Cane

Dated 1912-A horn handle with thumb rest and small chip on the end, silver presentation handle, hardwood shaft and no ferrule. H. 3 1/4" x 2 1/2", O.L. 33" \$150-\$250

133. Horn Dress Cane

Circa 1930-Carved horn handle, thick Malacca shaft and a horn ferrule. H. 3 1/2" x 1 1/2", O.L. 34 1/4" \$250-\$350

134. Metal Dress Cane

Circa 1925-A gun metal crook handle, ivory eyelets, faux bamboo partridge wood shaft and a metal ferrule. H. 3 3/4" c 3", O.L. 35" \$200-\$300

135. Asian Skeleton Cane

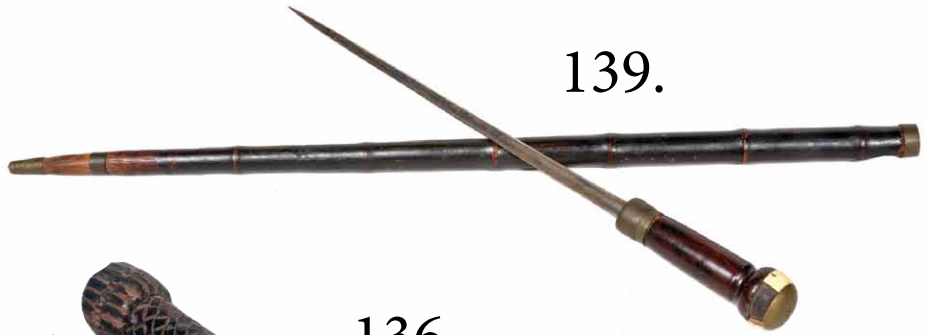
Early 20th Century-A one piece carved bamboo shaft with five dancing skeletons and an exotic wood ferrule. O.L. 33" \$250-\$350



137.



138.



139.



136.



141.



142.

136. Makila System Cane

Circa 1880-An original cane with a horn handle, braided leather handle which unscrews to expose a 3" pike, twig spur shaft and a 5" defensive ferrule. H. 1 1/2" x 2", O.L. 36"
\$300-\$500

137. Asian Possum Cane

Early 20th Century-A one piece bamboo shaft with a high relief carved possum in grass and a bi-metal ferrule. O.L. 35"
\$100-\$200

138. Horn Dress Cane

Circa 1900-Carved horn handle, ornate British silver collar, twig spur shaft and no ferrule. H. 4 1/2" x 3 1/2", O.L. 34 1/2"
\$300-\$400

139. Sword Cane

Circa 1860-An ivory and brass handle of which one section is missing of the ivory, carved eyelets, exotic wood handle and brass collar, 17" forged three sided blade, bamboo shaft and a metal ferrule. H. 5 1/2" x 1 3/4", O.L. 33"
\$250-\$350

140. Bamboo Sword Cane

Circa 1920-A bamboo handle which holds a 12" four sided blade, bamboo shaft and no ferrule. H. 5" x 1 1/2", O.L. 34"
\$200-\$300

141. Telescope and Compass Cane

Circa 1975-A modern French silver plated handle, a three draw telescope, compass inserted in top of shaft, small metal collar, ebony shaft and no ferrule. H. 1 1/2" x 3", O.L. 36"
\$200-\$300

142. French Dress Cane

Circa 1900-A possible amber handle, woven wire copper collar, fruitwood shaft and a possible amber ferrule. H. 1 3/4" x 2", O.L. 36"
\$250-\$400



140.



143. Stag Country Cane
 Late 19th Century-A stag handle with the letters E.E., copper collar, twig spur shaft and a metal ferrule. H. 7" x 2 1/2", O.L. 35"
\$250-\$350

144. Horn Whistle Cane
 Circa 1925-A carved horn handle which doubles as a whistle, palm wood shaft and a metal ferrule, working condition. H. 5" x 1 1/2", O.L. 32 1/2"
\$350-\$500

145. Chinese Dress Cane
 Early 20th Century-A white metal handle with various high relief dragons, bamboo shaft and a metal ferrule. H. 6 1/2" x 4", O.L. 33 1/2"
\$150-\$300

146. Folk Art Cane
 Dated 1914-Probably a Native American cane which is signed "Ladies Bizarre St Blues Church", vine wrapped and painted shaft and a metal ferrule. O.L. 36"
\$100-\$200

147. Artist Signed Exhibit Cane
 Circa 1930-A cast metal handle which has been painted, signed Stella, birch bark shaft and a metal ferrule. H. 5" x 2 1/2", O.L. 37"
\$150-\$250

148. A Group of Three Canes-
Average condition.
\$300-\$500

149. A Group of Four Canes-
Average condition.
\$300-\$400



151.



150. A Group of Four Canes- Including a pipe system stick and a cork cane
\$200-\$400

151. Native American Trail Marker Cane
 Circa 1975-A five foot oak Native American shaft with bead work, feathers, antlers and fur.
\$150-\$300

150.



152. Group of Canes
\$300-\$400

153. Agate Powder Puff Cane
 Circa 1925-A compartment cane which has a mirror in its top and a powder screen in the bottom, hinged and locks, ornate lower section, exotic wood shaft and a horn ferrule-H. 1 1/2" x 2 1/4", O.L. 36 1/2"
\$500-\$700

153.



152.



154.



154. Suitcase travel Cane
 Circa 1925-A six piece travel cane in its original case, signed sterling top, malacca shaft, horn ferrule. O.L. -36"
\$300-\$500

155.



155. Lucite Cane Display
 20th Century- A modern custom made stand for 35 canes. 18" x 24" x 24"
\$200-\$400



Kimball M. Sterling, Inc. (TFL-1915)
125 West Market Street
Johnson City, Tennessee 37601
kimballsterling @ earthlink.net
423.928.1471

Photography by James Price

Catalog Design by KT Design, LLC
www.kristaft.com

Member National Auctioneers Association
© Copyright 2011 Kimball M. Sterling, Inc.

