

Kimball M. Sterling, Inc.

Presents an

Antique Cane Auction



Saturday, September 26th, 2009



Kimball M. Sterling, Inc.
Presents An

Antique Cane Auction

Saturday, September 26th, 2009

11:00 a.m. est - Catalog Sale

2:00 p.m. est - Uncatalogued Session Online

Preview

Friday, September 25th - 12:00 p.m. - 5:00 p.m. E.S.T.

Saturday, September 26th - 9:00 A.M. E.S.T.

or by appointment anytime before the auction

**Both sessions will be carried
live on the internet at
LIVEAUCTIONEERS.COM**

**Kimball M. Sterling Auction Gallery
125 West Market Street Johnson City, Tennessee 37601
[kimballsterling @ earthlink.net](mailto:kimballsterling@earthlink.net)
423.928.1471**

Member National Auctioneers Association

www.auctionauction.com

TERMS & CONDITIONS

1. Cash, check, MasterCard, or Visa. A 15% buyers' premium will be added to the hammer price as part of the sale price for in-house, phone, and absentee bidders. We reserved the right to hold purchases until the buyers checks clears if buyer is not known by us. Bank letter of credit is acceptable. A 20% buyers fee will be charged to internet bidders.

2. Mail or phone bids are accepted; the firm may require a deposit.

3. Kimball M. Sterling, Inc. has endeavored to catalog and describe the property correctly. All property is sold as is and neither the auction company nor the consignor will be responsible for descriptions, genuineness, provenance or condition of the property. No statement in the catalog made orally at the sale or otherwise shall be deemed to be a warranty, representation, or an assumption of liability.

4. In the event of any dispute between bidders, the auctioneer shall have total discretion to determine the successful bidder, in which his determination shall be final or to re-offer and resale the article in dispute. Title of the item or items purchased by the bidder will pass at the fall of the gavel and declaration of bidder. This is not an approval auction. All measurements are approximate.

5. Principal auctioneer: Kimball M. Sterling #2467. B. Elizabeth Sterling, auctioneer # 5757. Firm Kimball M Sterling Inc. TFL-1915

6. Bidders may bid live on the Internet by visiting <http://www.auctionauction.com> You may also view the auction at this site and bid by phone.

7. Communications:
Telephone 423-928-1471.
Fax 423-928-2816.
Cellular 423-773-4073, 423-773-4072.
Email kimballsterling@earthlink.net

8. Worldwide shipping available. International sales which are protected by C.I.T.E.S. permits can also be arranged. Estimated bidders cost per cane is \$255.00 for permits and inspections plus the shipping cost. A permit may also be required by your country . Our packing service is free but the buyer must pay postage and insurance fees.

9. Kimball M. Sterling, Inc. will not be held responsible for bids not received in time for the auction or slow Internet bids. We will not be responsible for items left on our location for over 30 days.

10. Sale will be conducted at 125 West Market Street, Johnson City, Tennessee. 37604. Announcements day of the sale take precedence over pre-sale advertising. Any litigation that pertains to this auction will be conducted in the county of Washington in Tennessee and is agreed upon by registering for this auction.

11. Airport is the Tri-Cities Airport, which is approximately 20 miles from the gallery. Internet catalog and live bidding available at www.auctionauction.com Best Western Hotel: 423-282-2126. A very fine hotel which offers Sterling Auction a discount rate is the Carnegie Hotel 1216 W State of Franklin Rd, (423) 979-6400.

12. Please call for condition report on sale lots or email us. We do send out multiple photos by email of any lot in the auction .By registering for this auction you accept the terms and give Kimball M. Sterling auctions the right to charge your credit card on file for purchases and shipping, which you have entered on your registration.

13. Parking service is free.





1. Pair of American Folk Art Canes
 Circa 1893 and 1921-An unusual lot of one piece carved and dated canes done by the same hand. The earlier cane has many of the same features as the later cane. Lizards, snakes, frogs, turtles and fish are carved throughout both canes with a great stylized effect. Both canes have metal ferrules-
 O.L. 34" - 36"
\$2,200-\$2,600

2. Nautical Whale Ivory Dress Cane
 Circa 1880-Early carved whale tooth handle, 1" silver collar, rich mahogany shaft and an iron ferrule-H. 3" x 1 1/2", O.L. 34 3/4"
\$500-\$700

3. Nautical Whale and Tortoise Dress Cane
 Late 19th Century-Large whale ivory handle, tortoise inlaid top, hardwood shaft and an early ornate brass ferrule H. 1 3/4" x 3 1/4", O.L. 35 1/2"
\$600-\$800

1.



4. Nautical Whale Bone and Ivory Cane

Circa 1875-Ivory Tau handle with horn and baleen spacers, whale bone shaft and no ferrule. The diameter of the shaft is $\frac{7}{8}$ " at its thickest point.-H. $4\frac{1}{2}$ " x $4\frac{3}{4}$ ", O.L. $35\frac{1}{2}$ "
\$2,500-\$3,000

5. Whale Ivory Dagger Cane

Circa 1860-Hexagonal ivory handle, $1\frac{3}{4}$ " brass collar, 12" blade with blood grooves on each side, exotic wood shaft and a 3" brass and iron ferrule-H. 1" x $2\frac{1}{2}$ ", O.L. $35\frac{1}{2}$ "
\$700-\$1,000

6. Inlaid Sailor Made Ivory Cane

Mid 19th Century-A massive whale ivory handle, reeded and handmade brass collar and a $3\frac{1}{2}$ " handmade brass ferrule. This architectural nautical cane has various inlay of pearl, abalone, ivory, and baleen. The shaft is hand carved with spiraling, reeded columns and a hexagonal upper shaft. A few pieces of inlay are missing on the upper shaft-H. 2" x $2\frac{3}{4}$ ", O.L. $32\frac{1}{2}$ "
\$4,000-\$6000



4.

5.



6.





8.

7. Nautical Whale Ivory Cane

Early 18th Century-A rare sailor made "Going Ashore" cane with a carved tooth handle, hexagonal carved handle has a silver Spanish Reale inlaid in its top, two ivory eyelets, massive twig spur shaft and a 2" ivory ferrule-H. 2 ¾" x 2", O.L. 35 ½"

\$2,000-\$3,000

8. Confederate Veterans Folk Art Alligator Cane

Dated 1913-A one piece finely carved folk art gator cane which has an original inscription on its shaft. "Cut from Battle field above the Clouds 1863 Lookout Mountain 1913 Tennessee"-O.L. 36"

\$1,000-\$1,500

9. Three Ball Whimsy Folk Art Cane

Late 19th Century-A very nice example of this type of work with three paint decorated balls, probably tulip wood with a square shaft which ends in a hexagon-H. 5" x 1 ¾", O.L. 34 ¼"

\$500-\$600



7.



9.

10. Ivory G. A. R. Cane

Dated 1897-Ivory handle, attached brass and silver ribbon which is embossed G. A. R. 31st encampment Buffalo, NY 1897, well patinated twig spur shaft and a bi-metal ferrule-H. 1 ½" x 2 ½", O.L. 36"
\$600-\$700

11. Thomas Jefferson Folk Art Cane

Late 19th Century-This is a prime example of the Jefferson Cane by Craddock. It has various animals, Masonic emblem near the top, and various high relief carved statements about the life of Thomas Jefferson. It has dates of his birth and death and also of his presidential reign-O.L. 35 ½"
\$1,000-\$1,500

12. Sterling Dress Cane

Circa 1880-A high relief ball and collar, ebony shaft and a bi-metal ferrule-H. 1 ½" x 2", O.L. 34 ¼"
\$300-\$400

13. Ivory Lion and Elephant Dress Cane

Early 20th Century - A very finely carved handle, silver plated copper collar, ebonized shaft and a horn ferrule-H. 3 ½" x 1 ¼", O.L. 35"
\$600-\$800

11.



10.



13.



12.

14.



14. Massive Ivory Primate Dress Cane

Circa 1925-A finely carved ivory head with two color glass eyes, half inch silver collar, massive rich malacca shaft and a bi-metal ferrule-H. 2 ½" x 2 ½", O.L. 36"

\$800-\$1,200

15. Tailors System Cane

Art Deco-A celluloid or French Ivory paint decorated clown which has a 29" fabric ruler with nice recoil. The silver fluted collar attaches to the head in a precise way, exotic wood shaft and a bone ferrule-H. 1 ½" x 1 7/8", O.L. 35"

\$600-\$800

16. Erotic Ivory Monkey Cane

Circa 1910-A very nicely carved monkey enjoying himself, gold filled ornate collar, exotic wood shaft and a bi-metal ferrule-H. 1 ¾" x 1 ¾", O.L. 34"

\$800-\$1,200

16.



17. Massive Carved Ivory Dog Cane

Circa 1900-A very large and finely carved ivory head with average striations, two color glass eyes, original patina, silver collar with continental hallmarks, massive malacca shaft and a brass and iron ferrule-H. 3 ½" x 2" x 1 ¾", O.L. 34 ½"

\$1,200-\$1,600

17.



15.



18. Carved Dog Ivory Dress Cane
 Circa 1920-An ivory dog with open mouth, two color glass eyes, large silver collar which inscribed with a G, ebony shaft and a bi-metal ferrule-H. 4 ½" x 1 ¾", O.L. 32 ¾"
\$1,000-\$1,200



18.

19. Massive Silver and Ivory Horse Cane
 Dated 1848-This handle has wonderful silver work and two color glass eyes. The silver collar is ornately done and signed sterling, inlaid initial on the date plate in the shaft, sterling eyelets, rich mahogany shaft and a 4 ½" iron ferrule-H. 5" x 1 ¾", O.L. 35"
\$1,500-\$2,000



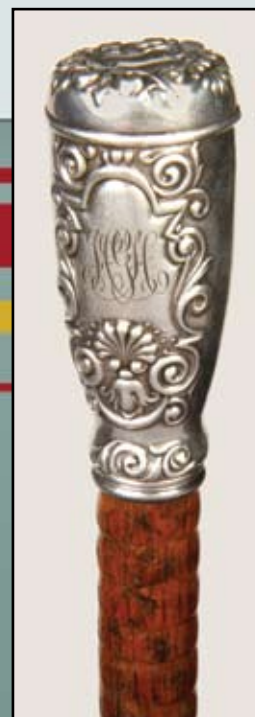
19.

20. Ivory Feline Dress Cane
 Circa 1880-A carved ivory handle with two color glass eyes, ivory spacer, exotic wood shaft and an ivory ferrule-H. 3 ¾" x 1 ½", O.L. 36"
\$600-\$800



20.

21. Sterling Secret Compartment Cane
 Circa 1890-A finely made signed sterling handle which has a removable top to hold your very private items, turned live oak shaft and a brass ferrule-H. 1 1/8" x 2 ¾", O.L. 34 ¾"
\$400-\$600



21.



22.

22. Ivory and Silver Talon Dress Cane

Dated March 20th 1902-A massive carved ivory handle with a presentation signed sterling attachment, ornate signed sterling collar, ebony shaft and a bi-metal ferrule-H. 4 ½" x 1 ¾", O.L. 33"
\$1,000-\$1,500



23.

23. Carved Ivory Hunchback Cane

Early 20th Century-A one piece carved handle with a gentleman holding a cane, probably French, massive malacca shaft and a bi-metal ferrule-H. 2" x 1 ½" x 3", O.L. 37 ½"
\$1,000-\$1,500



24. Carved Japanese Ivory Dress Cane

C. 1890-This whimsical carving has Mom on the top with 8 babies playing, gold collar, honey malacca shaft and a horn ferrule-H. 4 ½" x 1 ¾", O.L. 36 ½"
\$1,400-\$1,800

25. Vista System Cane

Early 20th Century-Silver plated on brass handle with coin purse and match safe with striker, beaded and fluted signed collar, exotic wood shaft and no ferrule-H. 2 ½" x 1 ½", O.L. 36"
\$300-\$500



24.



25.



26. Erotic Ivory Cane

Art Nouveau-A finely carved reclining nude which is attached to an 1 ½" ivory collar, bamboo shaft and a two and ¾" bi-metal ferrule-H. 3 ½" x 1 ½"-O.L. 36"
\$1,500-\$2,500

27. Japanese Mixed Metal Whimsical Cane

Circa 1890-A nice example of a cane from this time period which is signed with Oriental characters, split metal collar, exotic wood shaft and a metal ferrule-H. 4" x 1 ½", O.L. 36 ½"
\$600-\$900

28. Ivory Monkey Automation Cane
Late 19th Century-A fine example of this specimen which has two sets of glass eyes, painted protruding tongue, expert handwork throughout the handle, ivory lever and collar, exotic wood shaft and a brass ferrule, when the lever is pressed down the tongue protrudes and green eyes appear, when the lever is pushed near the top the tongue is retracted and brown eyes appear-H. 2" x 2", O.L. 33"
\$3,200-\$3,600

27.



26.





29.

29. Ivory and Ornate Sterling Dress Cane

Circa 1890-A hand chased silver overlay which is done in an experts hand, exotic wood shaft and a metal ferrule-H. 4 ¼" x 1 ½", O.L. 35"
\$700-\$900



31.



30. Ivory and Wood Lucifer Cane

Circa 1925-Carved Ivory and Wood handle, rich malacca shaft and a horn ferrule-H. 2" x 2 ½", O.L. 34 ½"
\$600-\$900

31. Erotic Carved Stag Cane

Circa 1890-A carved antler, probably elk or red deer, with involved essentialist moment, ornate silver plated collar, natural grown spur shaft and a bi-metal ferrule-H. 4 ½" x 4", O.L. 37"
\$1,400-\$1,800

32. English Sword Cane

Circa 1880-An interesting painted grain shaft and handle which has metal as the primary substance, a 17" 4 sided blued blade which is in fine condition, britannia handle and collar, screw lock mechanism and a bi-metal ferrule-O.L. 33 ½"
\$800-\$1,200

30.



32.

33. Massive Ivory Uncle Sam Cane

Late 19th Century-Finely carved handle with average ivory striations, ornate copper collar, mahogany shaft and a bi-metal ferrule-H. 3 ½" x 2" x 1 ¾", O.L. 34 ½"
\$2,200-\$2,600

34. Multi Color Gold

Rush Style Cane

Late 19th Century-A stamped 14K handle with various colors of gold and 4 panels which include ships, cargo, musical instruments, bee hives, tools, steam tractors and much more, the handle is signed with the initials "H. S." on a piece of sheet music. The shaft has a hexagonal 4" section which is covered in mother of pearl and inked designs. The balance of the hardwood shaft has mother of pearl wrapped around 70% of the shaft and it has an ivory ferrule. Very rarely do we see a cane with this gold and shaft work.-H. 1 ¾" x 1 ¼", O.L. 36"
\$12,000-\$16,000



34.





36.

35.



37.



35. Sailor Made Sword Cane

Circa 1870-Probably handmade by a sailor on a ship with macramé handle and shaft wrap, 22 ½" blade, handmade spring hilt (one is a little weak), hand engraved silver collar, massive malacca shaft and a metal ferrule-H. 4" x 1 ½", O.L. 35"
\$700-\$1,200

36. Pewter Saloon Girl Cane

Circa 1880-A very nice example of this type of work with an ornate stocking and shoe, one piece handle with small separation, live oak shaft and a bi-metal ferrule-H. 4" x 2 ½", O.L. 33"
\$400-\$600

37. Ornate Ivory Sword Cane

Circa 1880-A very finely carved ivory handle with a bird on a branch, 33" blade with engraved spread eagle and other ornate work, carved faux bamboo hardwood shaft and a carved ivory ferrule with branches, handle has a good locking mechanism to the shaft-H. 4" x 1 ½" x 1", O.L. 37"
\$1,800-\$2,200

38. Gold Overlaid Floral Dress Cane

Circa 1890-Nice handle with much ornamentation, ebonized shaft and a bi-metal ferrule-H. 2 ½" x 1 ½", O.L. 36"
\$300-\$500

38.



39. Erotic Ivory Cane

Mid 18th Century-An early example of two erotic scenes that is very rarely seen in today's market, appears to have original hinge, silver collar, malacca shaft and a 2 ¼" horn ferrule, two scenes are done in great detail and the handle has its average striations for a cane of this age-H. 2" x 2", O.L. 31 ½" \$10,000-\$12,000

39.





40.

40. L Shaped Ivory Dress Cane

Mid 19th Century-A nice simple cane with great character, gold filled ornate collar, honey malacca shaft and a 2" horn ferrule-H. 3 1/2" x 1 3/4", O.L. 34" \$500-\$600



42.

41. Stag Sword Cane

Circa 1790-Silver eyelets, stepped malacca shaft, brass collar, 26" blade with blood grooves and etching and a 3 1/4" hand wrought brass ferrule-H. 3 3/4" x 1 3/4", O.L. 35 1/2" \$900-\$1,200

42. Massive Ivory Parrot Cane

Early 20th Century-A finely carved handle with two color red eyes, rose wood faux bamboo shaft and an ivory ferrule-H. 6" x 2", O.L. 35 1/2" \$1,200-\$1,500



43.

43. Ivory and Silver Whistle Cane

Early 20th Century-A very unique handle which utilizes both ornate silver work, ivory and a cabochon, an exotic wood shaft and a 2" horn ferrule-H. 4 1/4" x 1 3/4", O.L. 35 1/2" \$800-\$1,200



41.



44. Parrot Dress Cane

Circa 1930-A celluloid or French ivory handle with two color glass eyes, small metal collar, honey malacca shaft and a horn ferrule-H. 3 $\frac{3}{4}$ " x 2", O.L. 36"
\$300-\$500



44.

45. Tortoise and Ivory Dress Cane

Circa 1880-A hands on ivory handle with average striations, full tortoise shaft and a 2 $\frac{3}{4}$ " bi-metal ferrule-H. 4" x 1 $\frac{1}{2}$ ", O.L. 37 $\frac{1}{2}$ "
\$1,500-\$2,500

45.



46. Nautical Whale Bone Cane

Circa 1870-A nicely turned ivory handle, small baleen spacer and a $\frac{3}{4}$ " whalebone shaft-H. 3" x 1 $\frac{1}{2}$ ", O.L. 37"
\$1,500-\$2,000



46.

47. Ivory Pommel Dress Cane

Circa 1875-Enscribed and carved ivory handle, ribbed silver collar, exotic wood shaft and a horn ferrule-H. 5" x 1 $\frac{3}{4}$ ", O.L. 34"
\$300-\$500

47.





49.

48. Obama Cane

Contemporary Political Cane-A red white and blue convention cane which has a silver Kennedy half dollar enclosed under glass with a photograph of President Obama-H. 1 ½" x 2", O.L. 36 ½"

\$400-\$600

49. Erotic English Ivory Cane

Late 19th Century-A carved Monk which doubles as a penis, light paint remains on the handle, ornate engraved coin silver collar, massive malacca shaft and a 2 ½" horn ferrule-H. 4" x 1 ¼", O.L. 36 ½"

\$1,500-\$1,800

50. Artist System Stick Cane

Circa 1900-A restored example which has compartments for brushes and paints, a brass handle and a brass ferrule which unscrewed to expose those compartments, bamboo shaft, paint compartment still retains most of it's blocked paint-H. 1 ¾" x 1 ¾", O.L. 35"

\$600-\$1,200



48.



50.

51. George Washington Relic Cane

Dated 1856-This presidential and historical relic comes to us from an estate in California. It has been in the family for many years and bequeathed by will in 1946 in the state of Vermont by Myra Dwinell. The top of the probably Lowell made silver handle is engraved with the following words, "Washington's hair 1793" and a concave inserted glass which contains hair follicles. Engraved in the side of the handle next to a bronze replica of the Liberty Bell is "Piece of the Independence Bell and wood from the State House". The hickory wood shaft must have been from the old State House in Philadelphia and the miniature bell made from parts of the original bell. A most unique antique which is accompanied by a cherry case, the 1946 will, various photos of the family and a 1977 Beverly Hills appraisal-H. 1 3/4" x 2", O.L. 34" \$3,000-\$5,000

51.



52. Tortoise and Ivory Folding Dress Cane

Circa 1880-A nice carved tortoise handle, ivory shaft, vermeil slip joint and a two part gold plated ferrule-H. 3 1/2" x 1 1/4", O.L. 34 3/4" \$1,000-\$1,200

52.





53. Inuit Walrus Ivory Dress Cane
Early 20th Century-A carved stylized seal with scrimshaw work, small metal collar, Birchwood shaft and a bi-metal ferrule-H. 6 ¼" x 1", O.L. 34 ¼"
\$300-\$500



54. Art Deco Ivory Flapper Cane
Circa 1925-Carved ivory head with average striations, metal collar, ebony shaft and an ivory ferrule-H. 2" x 1 ½", O.L. 36"
\$500-\$600



55. Porcelain Dress Cane
Circa 1890-Hand painted cherub on a cobalt blue background with flowers, gold collar, rosewood shaft and a bi-metal ferrule-H. 1 ½" x 1 ½", O.L. 36"
\$300-\$500

55.



56. Ornate Bloodstone Dress Cane
Circa 1900-An 1 ½" bloodstone sphere which is set into a poseysilver lace collar, ebony shaft and bi-metal ferrule-O.L. 34"
\$400-\$600

57. Smoky Quartz Dress Cane
Circa 1900-Full faceted gem stone, ornate silver diminutive handle, rosewood shaft and a bi-metal ferrule-H. ¾" x 7/8", O.L. 37 3/8"
\$250-\$400

57.



58. Erotic Ivory Dress Cane

Circa 1880-A mildly erotic ivory handle with two panels of high relief carvings, collar marked K & H Sterling, East Asian rosewood shaft and ivory ferrule-H. 1 ½" x 2 ¼", O.L. 36"
\$800-\$1,200

59. Melvin E. Cummings

Folk Art Cane

Early 19th Century-This cane comes to us from the estate of the world renown San Francisco artist Melvin E Cummings. A fully carved one piece shaft with a 6" spike handmade iron ferrule, carved in high relief is the name of "Charles Casal, buis est mon mon de ce baton," This folky box wood cane also has the name Ricorda inscribed into the handle. There are probably over a hundred items from human beings, animals, sea shells, portraits, cats, birds and symbols carved. The cane also has humans in various costumes and also three nudes-O.L. 36"
\$4,000-\$6,000

58.



59.





60.

60. German Zeitgeist Silver Dress Cane

Late 19th Century-A high relief molded heavy silver handle with hand chasing, ebony shaft and a horn ferrule-H. 4" x 2 1/4", O.L. 36"
\$500-\$1,000

61. Carved Ivory Dress Cane

Hallmarked 1892-A carved rose and leafed ivory handle with a blank ivory cartouche, finely engraved silver collar, signed by the maker with the makers marks E S and the marks for Birmingham, slim ebony shaft and a bi-metal ferrule-H. 5" x 1 1/2", O.L. 36"
\$600-\$1,200



63.



61.



62.

62. French Dandy Cane

Circa 1885-A carved Gothic Revival box wood handle, petite rosewood shaft and a metal ferrule-H. 9 1/2" x 1 1/4", O.L. 38 3/4"
\$300-\$500

63. Carved Ivory Elephant Dress Cane

Late 19th Century-A massive Anglo-Colonial carved handle with average ivory striations, round dome top, massive ebony shaft and an ivory ferrule-H. 5 1/2" x 1 1/4", O.L. 35 1/4"
\$1,000-\$1,500

64. Silver Anglo-Colonial Cane

Late 19th Century-A modified Opera shaped handle with an array of wild animals in the jungle. This restored cane has a grenadil wood shaft and an ivory ferrule-H. 5 ½" x 3 ¾", O.L. 36"
\$400-\$600

65. Silver Knob Dress Cane

Late 19th Century-Fashion of a far Eastern knob, large high relief dragon, rosewood shaft and a horn ferrule-H. 1 ¼" x 2 ½", O.L. 37"
\$300-\$500

66. Ivory Fetlock Dress Cane

Circa 1890-A much better than usual carving of this example, arts and crafts nickel silver ornate collar, rosewood shaft and a horn ferrule-H. 3 ½" x 1 ¼", O.L. 35 ¾"
\$500-\$800

67. German Equestrian Ivory Cane

Circa 1885-Carved ivory handle with a pair of horses carved with a master's hand, leather collar, partridge wood shaft and a bi-metal ferrule-H. 6 ¾" x 3 ½", O.L. 36 ¾"
\$800-\$1,200

68. Carved Fruitwood Stallion Cane

Circa 1925-Massive carved handle with two color glass eyes, brass collar, smooth congo wood shaft and a metal ferrule-H. 5 ¼" x 2 ¼", O.L. 35"
\$500-\$1,000

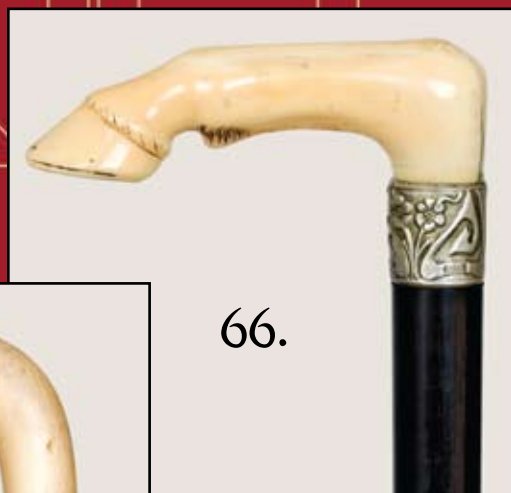
65.



64.



66.



67.



68.





70.

69. Silver Sporting Cane

Circa 1900-An ornate silver handle with equestrian accruements, hardwood shaft and a horn ferrule-H. 1 ¾" x 1 ¼", O.L. 36"
\$400-\$800

70. Whale Tooth Marine Cane

Circa 1880-This cane could be of Russian origin and is in fine original condition. The front of the cane shows the gentleman with the big handle bar mustache and in the rear a three mast clipper ship has been scrimshawed, original brass eyelets, twig spur tropical wood shaft and a metal ferrule-H. 3 ¾" x 1 ½", O.L. 35 ½"
\$1,500-\$2,500

71. Inlaid Nautical Cane

Circa 1900-A very rarely encountered example with diamond shaped whale ivory and tortoise inlaid in the shaft with pique gold wire, the shaft has both nautical rope carvings and spirals, top of the handle has a hexagonal britania plate, entire cane is ebony and has a horn ferrule-O.L. 36"
\$1,500-\$2,500



71.



69.

72. Whale Bone Nautical Cane

Mid 19th Century-A massive carved whalebone monster handle with protruding teeth and tongue, a 2 ½" architecturally carved baleen collar, massive whalebone shaft and a bi-metal ferrule-H. 5 ½" x 1 ½", O.L. 35 ½"

\$3,000-\$5,000

73. Silver Bludgeon Cane

Circa 1870-A heavy silver handle with nice handwork, ebony shaft and a metal ferrule-H. 3 ¼" x 2 ½", O.L. 37 ½"

\$500-\$600

74. Pitcairn Island Cane

Early 20th Century-A redwood fist, cocoanut wood shaft and small brass ferrule-O.L. 37"

\$250-\$350



73.



74.

72.





75.

75. Carved Ivory Fish

Late 19th Century-A rarely found carved English cane with a hallmarked Birmingham collar which dates the cane to 1894, honey malacca shaft and a metal ferrule-H. 4 ½" x 1 ½", O.L. 36 ½"
\$1,500-\$2,000

76. North West Coast Native Cane

Early 20th Century-A fine example of the native's work with inlaid abalone. The handle is carved in a high relief and has its average ivory striations, ornate gold and silver collar, exotic wood shaft and never had a ferrule-H. 4" x 2 ½", O.L. 32 ½"
\$2,000-\$2,500

77. Ivory Nautical Fist

Circa 1865-A carved ivory clinched fist with a coiled snake and ivory fluted collar, stacked disk shaft and a brass ferrule-H. 1 ½" x 1 ¼", O.L. 33 1/3"
\$500-\$700



76.

77.



78. Silver Plated Dress Cane

Art Nouveau-A very heavy Art Nouveau handle which is probably German, ebony shaft and a brass ferrule-H. 4" x 2 1/4", O.L. 35"
\$700-\$1,200

79. Carved Ivory Nude Cane

Late 19th Century-Massive carved ivory nude, ornate silver collar, honey malacca shaft and a metal ferrule. This handle must have been created by a master's hand and is in very fine condition-H. 5 1/4" x 1 3/4", O.L. 38 1/2"
\$4,000-\$6,000

80. Cigar Smoking Ivory Lady Cane

Circa 1870-A realistic carved ivory handle, slim metal collar, ebony shaft and a bronze ferrule-H. 4" x 1 1/2", O.L. 36"
\$700-\$1,000



80.





82.

81. Erotic Folk Art Cane

Late 19th Century-A one piece carved and decorated shaved hardwood branch in the shape of a penis, large brass ferrule and is in original condition-O.L. 35 ½"

\$500-\$1,000

82. Rare Erotic Stanhope Cane

Circa 1885-The handle has four different nude Stanhope's which appear to be French in origin, full frontal nudes and also rear views, two are in perfect condition and the others have some fading, handle has a carved gentleman with a long split beard and two color glass eyes, ornate silver collar and a metal ferrule, is a one piece hardwood cane-O.L. 34 ¾"

\$1,500-\$2,500

83. Silver Dress Cane

Circa 1865-Well fashioned silver handle, probably German, attached silver lanyard holder, hardwood shaft and a copper bi-metal ferrule-H. 2 ¼" x 1 ½", O.L. 34 ¾"

\$400-\$600

84. German Nobleman's Cane

Mid 18th Century-Silver and coquille nut knob handle, a pair of silver radiating shield eyelets, coin silver lanyard hanger, full bark malacca shaft and a 5" brass ferrule-H. 2" x 1 ½", O.L. 42"

\$1,000-\$1,500



81.



84.



83.

85. Continental Officer's Cane

Dated 1778-Coin silver engraved handle, silver lanyard hanger attached through the eyelets, stepped and dated ribbed saw tooth collar, rich malacca shaft and a period 6" brass ferrule-H. 1 ¼" x 1 ¼", O.L. 48"
\$1,000-\$1,500

86. Ornate Aristocratic French Cane

Circa 1820-A coin silver engraved handle with a coquille nut knob, finely cast filigreed eyelets and lanyard holder, original malacca shaft and a 2 ½" silver ferrule-H. 1 ¾" x 3", O.L. 43"
\$1,000-\$2,000

87. English Carved Ivory

Circa 1872-A carved handle with roses and leaves, hallmarked ornate silver collar with the makers mark E S and Birmingham 1892, ebony shaft and a bronze ferrule-H. 9 ½" x 2 ½", O.L. 38"
\$500-\$1,000



85.

86.



87.

88.



88. Carved German Ivory Cane
 18th Century-This German masterpiece was probably done by the school of Master Carver Johan Mascher. The handle has massive standing bear throughout the entire handle which is being attacked by a group of ferocious hunting hounds. It is a very dramatic scene and well executed, massive malacca shaft and a 7" brass and iron spike ferrule-H. 3 ½" x 1 5/8", O.L. 39 ½"
\$3,000-\$4,000

89. Art Deco Dress Cane
 Circa 1920-Handworked silver inlaid, a finely grained coriander wood shaft and a metal ferrule-H. 4" x 2 ¾", O.L. 35 ½"
\$300-\$500

90. Silver Elephant Dress Cane
 Circa 1925-A well molded sterling handle with original patina which is signed, rosewood shaft and a brass ferrule-H. 4 ½" x 5", O.L. 36"
\$400-\$600



91. Asian Style Silver Dress Cane
 Circa 1890-Probably an American
 cane done in the Asian style,
 rosewood shaft and a horn ferrule-H.
 3 ¼" x 1 ¼", O.L. 38 ½"
\$200-\$400

**92. Viennese Art Nouveau
 Dress Cane**
 Circa 1895-A carved ebony handle
 with two full nudes, large ivory
 collar, ebony shaft and a 2 ¼" ivory
 ferrule-H. 3 ½" x 1 ½", O.L. 38 ¼"
\$500-\$1,000

93. Walrus Ivory Day Cane
 Mid 19th Century-A two piece
 handle with a gentleman holding
 a cane carved on its front, grooved
 silver collar, rosewood shaft and a stag
 horn ferrule-H. 4" x 5", O.L. 32 ½"
\$400-\$600

94. European Ivory Nativity Cane
 Late 19th Century-A unique carving
 of the nativity which includes
 the gathering of all at the Manger
 including sheep, people, dogs, cows
 and much more. The reverse has a
 carving of a shepherd tending the
 sheep, large gold guilt collar, malacca
 shaft and a metal
 ferrule-H. 4 ½" x 1 ½", O.L. 34"
\$800-\$1,200

93.



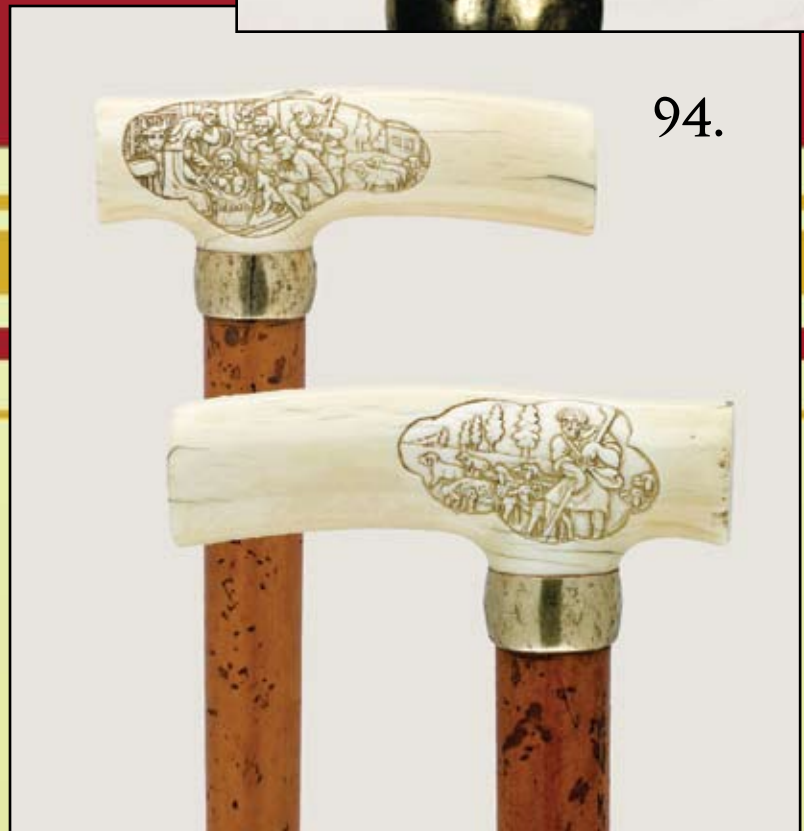
92.



91.



94.





96.



95.



97.



98.



99.

95. Porcelain Dress Cane

Circa 1870-A painted pommel porcelain handle with gold and flower decoration which is most likely French, bi-color metal ferrule, rich malacca shaft and a large horn ferrule-H. 1 ½" x 1 ¾", O.L. 37 ½"
\$400-\$600

96. Toledo and Ivory Cane

Circa 1885-A remarkable European handle which is ivory with a silver and gold raised Damascened inscription from the Koran. The shield is decorated with unusual silver arabesques and 24kt gold wire. It has a knob hardwood shaft and a 2" ivory ferrule-H. 2" x 1", O.L. 34 ½"
\$400-\$700

97. European Ivory Rabbit Cane

Circa 1900-The ivory handle is fully carved, rosewood shaft and a horn ferrule-H. 4 ½" x 2 ½", O.L. 37 ¾"
\$500-\$1,000

98. English Silver Dress

Circa 1900-Zebra striped silver pattern, British hallmarked collar, ebonized shaft and a metal ferrule-H. 4" x 2", O.L. 36"
\$300-\$400

99. German Folk Art

Circa 1890-A nice character carving of a gentleman with two color glass eyes and a protruding nose, silver collar, hardwood shaft and a brass bullet ferrule-H. 3 ¼" x 2 ¼", O.L. 32"
\$400-\$600

100. Carved Ivory Eagle Cane

Circa 1880-A finely carved bird with full feathers and talons, Roman key silver collar, cherry twig spur shaft and a bi-metal ferrule. Truly this is an American carved cane due to the majestic carving of the eagle-H. 5" x 2 3/4", O.L. 37 1/4"

\$1,000-\$1,500

101. French Ivory Grasshopper Cane

Circa 1885-A whimsical carved ivory handle, ornate swirled silver collar, rosewood shaft and a horn ferrule-H. 4 1/2" x 1 1/2", O.L. 37 1/4"

\$800-\$1,500

102. Anglo-Persian Silver Cane

Circa 1890-A deeply hand chased silver handle, ebony shaft and a horn ferrule-H. 1 3/4" x 2 1/4", O.L. 36"

\$400-\$600

103. French Ivory Dog Cane

Circa 1885-Truly a dog lover's favorite with a high relief carving of 13 different dog heads, leather collar, exotic wood shaft and a brass ferrule-H. 10" x 3 1/2"-O.L. 33 3/4"

\$500-\$1,000



100.



101.



103.



102.

104.



104. Carved Bulldog Cane

Circa 1900-A carved and silver overlaid French bulldog attached to a large malacca crook, two color glass eyes and a steel spike ferrule-H. 6 ½" x 4", O.L. 36 ½"
\$500-\$1,000

105. New Hampshire University Folk Cane

Early 20th Century-A New Hampshire University folk cane much like the one pictured on page 92 in "Canes in the United States", two piece cane with eyelets, hardwood shaft and a metal ferrule-H. 4" x 2 ½", O.L. 36"
\$200-\$300

106. Carved Ivory Erotic Cane

Circa 1885-A very unique carved and painted ivory handle which is done in great detail, snakeskin over wood shaft and no ferrule-H. 1 ¾" x 1 ¾", O.L. 35 ½"
\$2,000-\$2,500

106.



105.



107. Period Carriage Cane

Circa 1780-A prime example of this genre, coin silver handle with engraving, silver eyelets, coin silver attachment collar, original malacca shaft and a 6" brass spike ferrule
O.L. 47"

\$800-\$1,200

108. Sterling Horse Dress Cane

Circa 2007-A custom handle from the shop of Charles Daugherty, exotic wood shaft and a bi-metal ferrule-H. 4 ½" x 2 ½", O.L. 36 ½"

\$500-\$700

109. Ivory Dutch Maid Dress Cane

Circa 1920-A finely carved handle of a beautiful lady, ebony shaft and a bi-metal ferrule-H. 1 ½" x 2", O.L. 36"

\$600-\$700

110. Blackthorn Folk Monkey Cane

Circa 1885-A primitive carved handle, original shaft and a brass ferrule-O.L. 36"

\$150-\$250

111. Fossilized Ivory Lobster Cane

Twentieth Century-A claw carved by a master's hand, signed sterling fluted collar exotic wood shaft and a brass and metal ferrule-H. 4 ¼" x 1 ¾", O.L. 36 ½"

\$800-\$1,000

107.



108.



109.



110.



111.

112.



112. Dog Glove Holder Cane

Circa 1930-A carved and painted head with two color glass eyes, push button lower jaw, ivory collar, ebony shaft and a bi-metal ferrule-H. 1 3/4" x 2 3/4", O.L. 36"
\$250-\$350

113. Carved Dog with Umbrella Folk Cane

Early 20th Century-An English carved handle with two color glass eyes, hallmarked ornate silver collar, original twig spur shaft and a metal ferrule-H. 4" x 2", O.L. 34 1/2"
\$300-\$400

114.



114. Ivory and Silver Pique

Circa 1769-A prime example of this genre of canes which comes to us from a private Ohio collection. The silverwork on the handle is quite extraordinary and it has its average striations for its age, two ivory eyelets surrounded by silver work, coin silver collar, massive malacca shaft and a copper and iron ferrule. Inlaid in the top of the handle is "A J 6 9"-H. 1 3/4" x 3 3/4", O.L. 35 1/2"
\$5,500-\$6,500

113.



115. Ivory Lion Crook Dress

Circa 1890-A finely carved massive ivory handle with both a male and female lion carved and the crook, average striations, ribbed silver collar, ebony shaft and an ivory ferrule-H. 4 $\frac{3}{4}$ " x 4", O.L. 37 $\frac{1}{2}$ "
\$3,000-\$3,500

116. Stag Sword Cane

Circa 1870-A large stag handle with original patina with a push button lock, 28" hand forged blade, malacca shaft and a horn ferrule-H. 4" x 5 $\frac{3}{4}$ ", O.L. 35"
\$800-\$1,200

117. Ivory Saloon Leg with Pistol Cane

Late 19th Century-Carved ivory leg with a gold buttons on the shoe and a gambler's derringer under the garter, gold collar, ebonized shaft and a bi-metal ferrule-H 4 $\frac{1}{2}$ " x 1 $\frac{1}{2}$ ", O.L. 36"
\$500-\$700



118.



118. Ivory Snake and Skull Cane
Early 20th Century-A detailed massive skull and carved ivory snake for the handle, exotic wood shaft and a bi-metal ferrule-H. 7" x 2", O.L. 36 1/2"
\$2,000-\$2,500

119. Ivory Automation Cane
Circa 1925-A Hasidic gentleman with curls and hat, push button on rear that makes tongue extend, ornate hallmarked silver collar, hardwood shaft and a 2 1/2" metal ferrule-H. 2 1/2" x 1 1/2", O.L. 36"
\$500-\$700

120. Ivory Nude Cork Screw Cane
Circa 1930-Carved ivory handle of a reclining nude, ornate silver collar, 3" cork screw, hardwood shaft and a horn ferrule-H. 3 3/4" x 1 1/4", O.L. 35 1/2"
\$700-\$1,000

119.



120.



121. Carved Wood Bull Dog Cane
 Circa 1930-A very nicely carved wood handle, two color glass eyes, original paint, wood shaft and a metal ferrule-H. 3" x 2", O.L. 36"
\$300-\$400

122. Massive Ivory Pride of Lions Cane
 Late 19th Century-A finely carved and rarely seen massive carved handle, ivory collar, honey malacca shaft and a brass ferrule-H. 1 3/4" x 6", O.L. 37"
\$3,000-\$4,000

123. Massive Ivory Pirate Cane
 Late 19th Century-A massive carved ivory pirate with his tongue protruded, fluted signed sterling collar, honey malacca shaft and a bi-metal ferrule-H. 3" x 2", O.L. 36"
\$1,000-\$1,500

121.



122.



123.





124.

124. Ivory Den of Rabbits Cane
Dated 1915-Six ivory rabbits among the brush with average striations, ornate dated silver, two edge collar, malacca shaft and a bi-metal ferrule-H. 4 ½" x 1 ½", O.L. 35 ½"
\$1,500-\$2,000



125.

125. Box set of handles
Circa 1925-A crook handle signed 800 silver handle attached to an exotic wood 7" attachment shaft and an oval rose quartz attached to a layered 10" tortoise shaft. This original box set could be attached to any shaft of your choice. The silver handle is 4" x 3 ½" and the quartz handle is 2" x 1 ¼"
\$1,100-\$1,400

126. Signed Sterling Tiffany Cane
Early 20th Century-A signed Tiffany and Co. sterling heavy ornate handle which screws to the shaft with space to hide something in the handle, ebony shaft which is more contemporary than the cane and a bi-metal ferrule-H. 4 ½" x 2 ¾", O.L. 36"
\$600-\$900

127. Meissen Porcelain Dress Cane
Late 119th Century-A signed example of the porcelain works with birds, lady bugs and lightning bugs, handle unscrews from the ebony shaft, small gold collar and a bi-metal ferrule-H. 3 ¼" x 1 3/8", O.L. 36"
\$500-\$800



127.



126.

**128. Faberge Style Rock
Crystal Cane**

20th Century-This cane is done much in the style of the early Faberge canes. However, it does have the marks of Karl Gustav Halmar Armfelt, St. Petersburg Kokoshnikada. The gold dore frog with emerald eyes is pinned to the rock crystal, two color blue enamel and silver collar and the handle unscrews from the ebony shaft, a very high quality after market cane-H. 3 ½" x 1 ½", O.L. 36"
\$3,000-\$4,000

129. Aesop's Fable Ivory Cane
Circa 1880-A large ivory handle which depicts "The Fox and the Grapes", carvings are done in great detail, silver collar, well spotted snake wood shaft and horn ferrule-H. 5 ¼" x 1 ¼", O.L. 37 ¾"
\$1,000-\$1,200



129.



128.



130.

130. English Sheepdog Cane

Late 19th Century-A whimsical carving which is beautifully carved out of birch, gold filled collar, two color glass eyes, malacca shaft and a bi-metal ferrule-H. 4" x 2", O.L. 36" \$400-\$600

131. French Percussion Gun and Dagger Cane

Mid 19th Century-A four barrel black powder pistol which is unique in that it cocks when it is removed from the shaft. When the trigger is depressed the cylinder slams backwards on a fixed firing recess and all barrels go off at once. Near the back of the cylinder are French makers marks. This is an exceptional example of this genre with an ivory handle with silver mounts on a, signed Paris Brevette silver collar, malacca shaft-H. 4 1/2" x 5 1/2", Dagger 6", O.L. 33 1/2 \$5,000-\$7,000



131.

132. French Life Saver Cane

Late 19th Century-This is one of the three French defensive canes that are found in the market today. It is in fine working condition and has articulated spikes which spring out when the metal collar is slipped down. Of all of the defensive canes this is probably the most dangerous, original brass handle, beaded silver collar, hardwood shaft and a brass ferrule-H. 2 ¼" x 1 ½", O.L. 35 ½" \$3,500-\$4,000

133. Carved Folk Cane

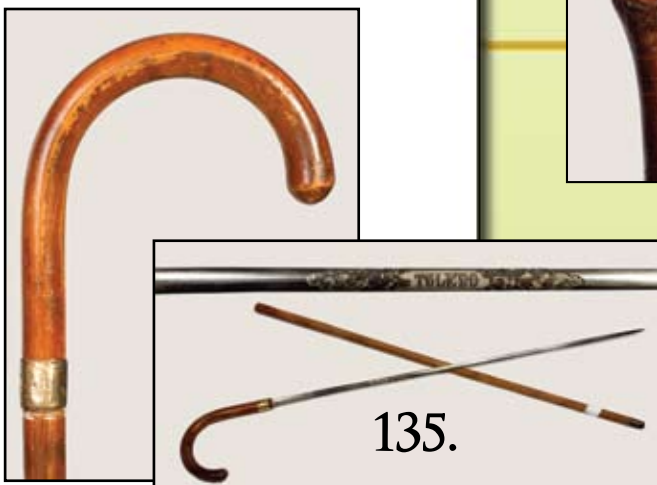
Late 19th Century-A massive carved one piece birch cane with a steel ferrule, has a whimsical carving of a snaggle toothed lady with two color glass eyes-H. 4" x 3 ½", O.L. 36" \$300-\$600

134. Carved Dog Sword Cane

Circa 1870-A very nicely carved dog handle, brass eyelets, silver collar, four-sided 27" blade, hardwood shaft and a 4" brass ferrule-H. 7" x 3 ½", O.L. 35" \$800-\$1,200

135. Toledo Sword Cane

Circa 1890-A crutch handle full malacca shaft, inscribed gold collar with L. Kubler New York, 27" signed Toledo blade and a bi-metal ferrule-H. 5 ½" x 5", O.L. 35 ¾" \$300-\$500





136.

136. Ivory and Gold Dog Cane

Circa 1903-Finely carved dogs with two color glass eyes, 3 18kt gold collars, exotic wood shaft and a brass ferrule. This cane is pictured on page 279 of "Canes in the United States by Catherine Dyke"-H. 4" x 6", O.L. 36" \$600-\$1,000



139.

137. Victorian Stag Dress Cane

Circa 1880-An ornate and massive 3" collar made by Lyon, partridge wood shaft and no ferrule-H. 5" x 1 1/2", O.L. 33 1/2" \$300-\$500

138. Ivory Asian Dress

Circa 1930-A massive carved ivory handle with minor damage, three hallmarked British sterling straps, carved lacquered shaft and a horn ferrule-H. 7" x 1 3/4", O.L. 37 1/2" \$400-\$600

139. Carved Ivory Dress

Circa 1880-A carved ivory walnut which is partially hulled, beaded metal collar, ebony shaft and a horn ferrule-H. 4 1/8" x 2 3/4", O.L. 36 3/8" \$500-\$800



138.



137.

140. Carved Ivory Dress Cane

Art Nouveau-A finely carved ivory handle in the form of a Madonna or maybe a beautiful Art Nouveau lady, signed B.A. Allen collar, hardwood shaft and a stag ferrule-H. 3 ½" x 1 ½", O.L. 36"
\$400-\$600

141. Ivory Lotus Blossom Cane

Circa 1885-Carved ivory handle with original patina and average striations, natural twig spur shaft and a brass ferrule-H. 2 ½" x 1 ¼", O.L. 35"
\$250-\$350

142. Carved Ivory and Bone Cane

Circa 1890-A carved dog handle which is mostly ivory, inlaid eyes, silver collar, partridge wood shaft and a bi-metal ferrule-H. 2 ¾" x 5", O.L. 35 ½"
\$350-\$450

143. Tripod System Stick Cane

Circa 1860-Large brass handle, hardwood faux bamboo carved shaft and a metal ferrule-H. 2" x 1 ¾", O.L. 34"
\$200-\$300

144. Sword Cane

Circa 1900-Exotic wood crutch handle, four sided 27" blade, signed sterling collar, bamboo shaft and a 2 ½" steel ferrule-H. 5" x 4 ½", O.L. 36"
\$300-\$500



140.

141.



142.



143.



144.

146.



145.



147.



148.



149.

**145. Historical Staff**

Dated 1859-1761-The dates attached to the American oak shaft tell us that this is a relic from the Cherokee Indian Wars. We have no idea due to the lack of history on the cane of what part of that war it represents but someone thought enough of it to place the dates upon it, small cherry handle and a stag ferrule-O.L. 45"
\$400-\$600

146. Fishing Pole System Stick Cane

Early 20th Century-A nice example with a carved bamboo shaft which is signed by the artist, original expanding 8 foot pole and a brass ferrule-O.L. 35"
\$250-\$350

147. Bone Sword Cane

Circa 1890-Carved bone handle, ten inch four sided etched and blued blade, bamboo shaft and a horn ferrule-H. 1" x 1 1/4", O.L. 35"
\$200-\$400

148. Victorian Horn And Silver Cane

Circa 1865-A carved horn handle with thumb pedestal, applied sterling end cap and flowers, signed sterling collar and a very unique carved ebony shaft and a metal ferrule-H. 4 1/2" x 3", O.L. 36"
\$200-\$400

149. Celluloid Dress Cane

Circa 1900-A French ivory or celluloid, molded handle with great detail, silver collar signed "Easid", exotic wood shaft and a horn ferrule-H. 5" x 2 3/4", O.L. 36"
\$300-\$500

150. American Silver Dress Cane

Circa 1885-Very ornate signed sterling handle, overlapped and studded sterling collar, malacca shaft and a brass ferrule-H. 3 ½" x 3 ¼", O.L. 34 ¾"
\$400-\$600



150.

151. Japanese Ivory and Bamboo Cane

Circa 1900-The completely carved bamboo shaft with a Samurai Warrior which has an ivory face, carved various trees and flowers, small dots of ivory inlaid throughout the cane and a small brass ferrule-O.L. 35"
\$300-\$400



151.

152. Butterscotch Eagle Dress

Circa 1920-A molded butterscotch celluloid eagle with two color glass eyes, some paint, hardwood shaft and a horn ferrule-H. 3" x 3 ½", O.L. 36"
\$200-\$400



152.

153. Carved Dog and Snake Cane

Circa 1925-A nicely carved dog head with two color glass eyes, gold filled snake collar, hexagonal American oak shaft and a bone ferrule-H. 2" x 1 7/8", O.L. 36"
\$200-\$300



153.

154. Gold Filled Dress Cane

Circa 1910-A very nice early formal dress cane with a full faceted green stone or glass in its top, ebony shaft and a metal ferrule-H. 1" x 1 ½", O.L. 34 ½"
\$250-\$400



154.

155.



157.



156.



155. Folk Art Souvenir Cane

Circa 1940-A carved dog handle with red coral eyes, beaded brass collar, "Souvenir- Haute Du. Poilu Meuse" carved on the shaft, exotic wood and a steel ferrule-H. 4 ½" x 2 ½", O.L. 37"
\$200-\$400

156. Gold Filled Dress Cane

Early 20th Century-A nicely cast handle with not much wear, massive mahogany shaft and a bi-metal ferrule-H. 1 ½" x 1 ¾", O.L. 35 ½"
\$200-\$300

157. Silver Garden Cane

Dated 1907-A signed sterling handle with various flowers, leaves and decoration, malacca shaft and a bi-metal ferrule-H. 4" x 2 ½", O.L. 34"
\$300-\$400

158. Ivory Porpoise and Silver Cane

Circa 1930-Carved ivory disc, ornate fluted silver handle, leather collar, cherry stained faux bamboo shaft and a steel ferrule-H. 1 5/8" x 2", O.L. 37"
\$300-\$500

158.



159. Boar's Tusk Cane

Circa 1875-A nice early trophy cane with original patina, hexagonal oak shaft and a bone ferrule-H. 4 ½" x 3 ½", O.L. 34 ½"
\$200-\$300

160. Boar's Tusk Dress Cane

Circa 1930-A boar's tusk which is perfectly in suite with an exotic wood shaft and a brass ferrule-H. 4 ½" x 4", O.L. 36"
\$200-\$300

161. Sterling Dress Cane

Circa 1930-A signed sterling handle with minor dents, massive malacca shaft and a 1 ¾" horn ferrule-H. 1 ½" x 2", O.L. 35 ¾"
\$150-\$300

162. Suit Case System Stick Cane
Circa 1930-A nice traveling silver and mahogany stick, sterling end cap, and a bi-metal ferrule-O.L. 36"
\$150-\$250

163. Howell Gold Dress Cane

Early 20th Century-A hand worked Howell of London, 14kt gold handle, honey malacca shaft, Howell cartouche and the initials J. B. and a horn ferrule-H. 1 ½" x 2 ½", O.L. 37"
\$400-\$600



161.



159.



162.



160.



163.

165.



164. Texas Folk Art

Circa 1925-This cane looks much like Mexican souvenir carvings but in our opinion, it is not. It is much more finely carved than those with an eagle and American flag that looks much more like ours than theirs. You be the judge, but it's a nice one-O.L. 34"
\$200-\$400

165. Stag Countryside Cane

Circa 1830-Stag with a coin silver plate, silver eyelets, faux bamboo hardwood shaft and a 3 1/2" brass ferrule-H. 2 3/4" x 1 1/2", O.L. 34"
\$200-\$400

166. Nautical Whalebone and Snake Cane

Circa 1860-A marine ivory two piece handle, hand worked copper snake ferrule, half hexagonal and straight whalebone shaft and a small brass ferrule-H. 3 3/4" x 2 1/2", O.L. 33 1/2"
\$1,400-\$1,600

166.



164.



167. Tiger Eye Folk Cane

Early 20th Century-A nice tiger eye sphere, metal collar, natural twig spur shaft and a brass ferrule-H. 1 ¼" x 1 ¼", O.L. 34 ½"
\$200-\$300

168. Ivory and Leather Umbrella

Circa 1930-Carved ivory head with two color glass eyes, rich leather handle, grey umbrella in nice condition with cover and a brass ferrule-O.L. 35"
\$200-\$400

169. African American Folk Cane

Circa 1900-A nice turn of the century cane probably from North Carolina, polished patina, also has an 1863 date with modern carving which has been added to the cane to make someone think it is worth more than what it is, otherwise it is a great little folk cane but someone has added that little touch to it-O.L. 36"
\$150-\$250



167.



169.



168.

170.



170. African American Folk Cane

Circa 1850-This is a wonderful painted and polychromed diamond willow folk cane which retains much of its original paint and a steel bi-metal ferrule which has been added later. There is an applied brass plaque which was probably removed from a roll of barbed wire which has the numbers WS1923. This plaque has nothing to do with the age of this cane and was attached by one of its previous owners. The animals have beaded glass eyes and some of the pods have damage. Former Stuart White Collection-O.L. 35"
\$1,000-\$2000

171.



171. Oak Cane Case

Early 20th Century-This case was made by Oscar Onken Company of Cincinnati, Ohio. It has spaces for 25 canes and retains its original paper label. This original case has a lift top and four carved ball and claw feet-15" x 15" x 45"
\$1,500-\$2,500

172. Cigar Store Cane Rack

This contemporary cane rack has spaces for 15 canes and is made from walnut and some exotic tropical wood. It was probably made for a particular client and is one of a kind- 22" x 16" x 39"
\$800-\$1,200

*End of catalogue sale.
Now join us online at
www.auctionauction.com
for the 2:00 session which
includes more canes, handles,
books etc. You can also view
the catalogue on the website
and arranged phone bidding
on any item in this session.*

172.





Kimball M. Sterling, Inc.
(TFL-1915)
125 West Market Street
Johnson City, Tennessee 37601
kimballsterling @ earthlink.net
423.928.1471

Member National Auctioneers Association
© Copyright 2009 Kimball M. Sterling, Inc.

Photography by James Price

Catalog Design by KT Design, Inc.
www.kristaft.com