

Kimball & Victoria Sterling

Present A

Private Collection
of Antique **CANES &**
WALKING STICKS



Saturday, September 25th, 2010
11:00 a.m. EST

Kimball & Victoria Sterling

Present A

**Private Collection
of Antique**
**CANES &
WALKING STICKS**

Saturday, September 25th, 2010

11:00 a.m. EST

Preview - Friday, September 24th

12:00 p.m - 5:00 p.m. EST

Saturday, September 25th

9:00 a.m. EST

or by appointment anytime before the auction



Kimball M. Sterling Auction Gallery
125 West Market Street
Johnson City, Tennessee 37601
kimballsterling @ earthlink.net
423.928.1471

Live on the internet at
LIVEAUCTIONEERS.COM

Two Time Winner of Best of Show from the
National Auctioneers Association

www.auctionauction.com

TERMS & CONDITIONS

1. Cash, check, MasterCard, or Visa. A 15% buyers' premium will be added to the hammer price as part of the sale price for in-house, phone, and absentee bidders. We reserved the right to hold purchases until the buyers checks clears if buyer is not known by us. Bank letter of credit is acceptable. A 20% buyers fee will be charged to internet bidders.

2. Mail or phone bids are accepted; the firm may require a deposit.

3. Kimball M. Sterling, Inc. has endeavored to catalog and describe the property correctly. All property is sold as is and neither the auction company nor the consignor will be responsible for descriptions, genuineness, provenance or condition of the property. No statement in the catalog made orally at the sale or otherwise shall be deemed to be a warranty, representation, or an assumption of liability.

4. In the event of any dispute between bidders, the auctioneer shall have total discretion to determine the successful bidder, in which his determination shall be final or to re-offer and resale the article in dispute. Title of the item or items purchased by the bidder will pass at the fall of the gavel and declaration of bidder. This is not an approval auction. All measurements are approximate.

5. Principal auctioneer: Kimball M. Sterling #2467.
B. Elizabeth Sterling, auctioneer # 5757. Firm Kimball M Sterling Inc. TFL-1915

6. Bidders may bid live on the Internet by visiting <http://www.auctionauction.com> You may also view the auction at this site and bid by phone.

7. Communications:
Telephone 423-928-1471.
Fax 423-928-2816.
Cellular 423-773-4073, 423-773-4072.
Email kimballsterling@earthlink.net

8. Worldwide shipping available. International sales which are protected by C.I.T.E.S. permits can also be arranged. Estimated bidders cost per cane is \$255.00 for permits and inspections plus the shipping cost. A permit may also be required by your country. Buyers pay for shipping, packing and insurance from United states Postal Service.

9. Kimball M. Sterling, Inc. will not be held responsible for bids received on the day of the auction, unexecuted absentee bids, phone bidders not contacted or slow Internet bids. Although we do attempt to get all bids executed problems do occur. There will be no recourse from the bidder. We will not be responsible for items left on our location for over 30 days.

10. Sale will be conducted at 125 West Market Street, Johnson City, Tennessee. 37604. Announcements day of the sale take precedence over pre-sale advertising. Any litigation that pertains to this auction will be conducted in the county of Washington in Tennessee and is agreed upon by registering for this auction.

11. Airport is the Tri-Cities Airport, which is approximately 20 miles from the gallery. Internet catalog and live bidding available at www.auctionauction.com Best Western Hotel: 423-282-2126. A very fine hotel which offers Sterling Auction a discount rate is the Carnegie Hotel 1216 W State of Franklin Rd, (423) 979-6400.

12. Please call for condition report on sale lots or email us. We do send out multiple photos by email of any lot in the auction. By registering for this auction you accept the terms and give Kimball M. Sterling auctions the right to charge your credit card on file for purchases and shipping, which you have entered on your registration.

13. Parking service is free.





1.



1. Ivory Bear and Vine Cane

19th Century-A very fine carved ivory bear, one piece vine shaft and a metal ferrule, probably Russian-O.L. 35 1/2"

\$1,000-\$2,000

2. Ivory Dachshunds Cane

Late 19th Century-A pair of ivory dogs, malacca shaft, ivory collar and a brass ferrule-H. 3 3/4" x 2 1/2", O.L. 38 1/2"

\$1,500-\$2,500

3. Ivory Cat Cane

Circa 1890-Carved ivory cat with dark, inset eyes, ebony shaft, braided silver collar, and an ivory ferrule. The handle is 4 1/4" wide. O.L. 35 3/4"

\$1,000-\$1,500



3.



2.

4. Large Ivory Tiger Cane

Late 19th Century-A stylized ivory head, Malacca shaft, metal collar and ferrule-H. 3 ¼" x 2 ¼", O.L. 36"

\$2,000-\$3,000

5. Toledo Sword Cane

19th Century-An ivory handle with a 17 ¼" diamond shape blade signed Toledo, Malacca shaft, silver collar and a metal ferrule-H. 5 ¼" x 3 ¼", O.L. 31 ½"

\$1,000-\$2,000

6. European Silver Sword Cane

Circa 1875-A 1 ½" silver knob with Asian motif's, Malacca shaft and a metal ferrule. It has a 20" triangular foil blade with much of it's original blued finish-O.L. 36"

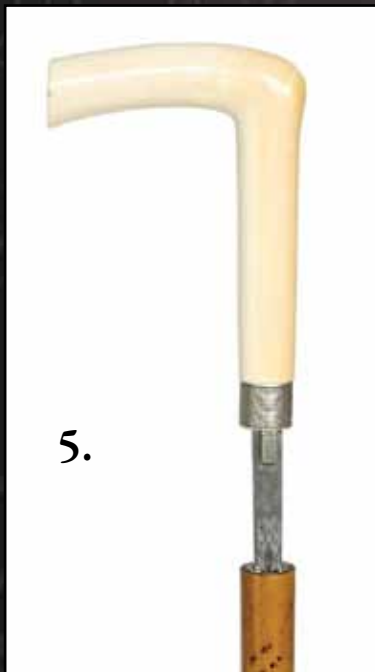
\$1,000-\$1,500



4.



6.



5.





7.

7. Ivory and Horn Mermaid Cane

Circa 1880-An unusual mixed use of materials, stepped Malacca shaft and a horn ferrule. The twin tailed mermaid is made in high relief with a dark brown horn.-H. 7 ½" x 2 ¼", O.L. 38 ¾"

\$1,500-\$2,500

8. Boar Warthog Ivory Cane

Circa 1870-A fine carved handle, ebonized fruitwood shaft, and a metal ferrule. The tooth is 6 ½" wide and is probably some type of German trophy-O.L. 35 ½"

\$800-\$1,500

9. Ivory Buffalo Cane

A nicely carved ivory handle, Malacca shaft, silver collar and a metal ferrule-H. 2 ½" x 2 ½", O.L. 34 ¼"

\$2,000-\$3,000



8.



9.



10. Large Ivory Crook Cane

Circa 1910-Large carved handle, pepperwood shaft, ivory collar and staghorn ferrule-H. 5" x 3 1/4", O.L. 37"

\$800-\$1,500

11. French Erotic Nude Cane

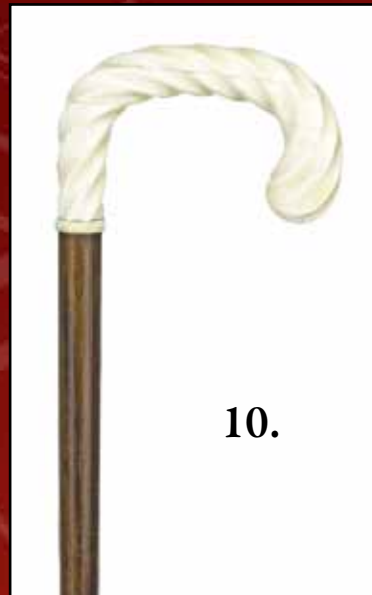
A large ivory Art Nouveau finely carved handle, engraved silver collar, mallacca shaft, and a 3" ivory ferrule. This is a world class cane. H- 5 1/2" X 2 1/2" O.L.- 35 1/4"

\$4,000-\$6,000

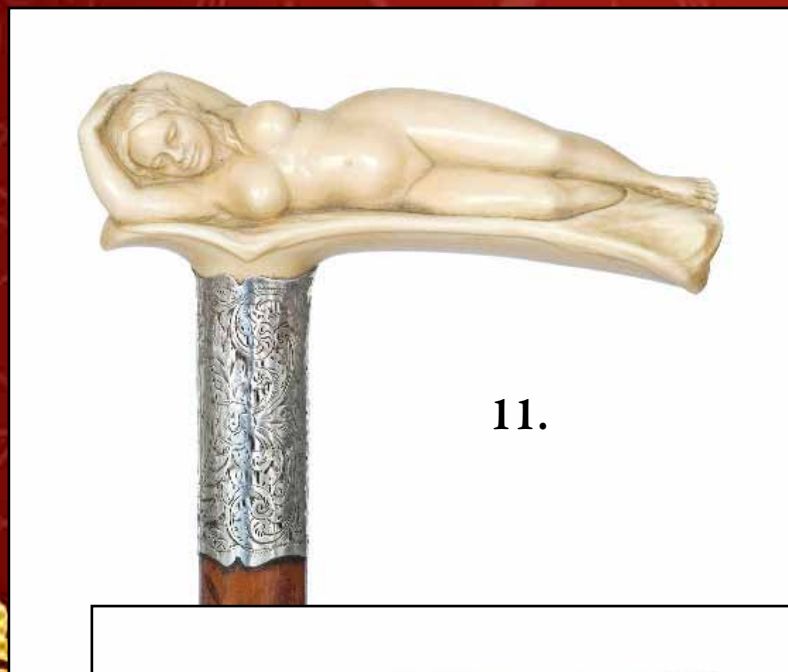
12. English Skull Cane

Circa 1900-A carved iron wood ivory handle with ivory teeth, collar, and ferrule. The skull has a moving lower jaw.-H. 3 1/2" x 3", O.L. 35 1/2"

\$1,000-\$1,500



10.



11.



12.





13.



14.

13. Amethyst Quartz Cane

Circa 1890-A natural stoned handle, ebony shaft, a cloisonné enamel collar and a horn ferrule. The ball is 1 3/4" in diameter.-

O.L. 38 1/4"

\$400-\$700

14. Ivory Skull and Snake Cane

Late 19th Century-Large ivory knob, Congo wood shaft, metal collar and brass ferrule, carved one piece handle-H. 2 3/4" x 2 1/4", O.L. 33 1/3"

\$1,500-\$2,500

15. Ivory Owl Cane

Early 20th Century-Large ivory handle, ash branch shaft, dark glass eyes and a metal ferrule-H. 2 1/4" x 2 1/4", O.L. 36"

\$1,000-\$1,500

16. Bulldog Glove Holder Cane

Circa 1900-A carved fruitwood handle, Malacca shaft, leather collar, glass eyes and a metal ferrule.

When the lower jaw is activated, the mouth opens to show a red tongue and teeth. The jaw produces a penetrating, barking noise-H. 3" x 1 3/4", O.L. 35 3/4"

\$700-\$1,200



15.



16.



17. Peacock Silver Dress Cane

Circa 1880-An oversize silver handle, Malacca shaft and a brass ferrule-H. 3" x 2", O.L. 37 1/2"
\$900-\$1,200

17.



18. Ivory Religious Cane

Early 19th Century-A carved ivory and horn handle, Malacca shaft and a brass ferrule. The handle basically creates a spirit of Christmas. Handle is 3 1/4" high-O.L. 35 1/4"
\$1,000-\$2,000

18.



19. Fruitwood Duck Cane

20th Century-Carved handle, Malacca shaft, glass eyes, leather collar and a metal ferrule-H. 6" x 2", O.L. 36"
\$500-\$1,000

19.



20. Stag Bird Cane

Late 19th Century-A figural stag horn, grained rosewood shaft, metal collar, large pair of two color glass eyes and bi-metal ferrule-H. 4" x 2", O.L. 37"
\$500-\$800

20.



21.



21. American Nautical Cane

Mid 19th Century-A carved whale tooth handle in the shape of a clinched fist, holding an eel with a buttoned cuff, rich Malacca shaft with silver eyelets and a brass ferrule. It exhibits a wonderful patina.-H. 3 1/2" x 2", O.L. 32 1/2" \$1,500-\$3,000

22. Bone Short Sword Cane

Circa 1865-Nice original cane with a bone handle, mother-of-pearl medallion, ebony shaft and a metal ferrule. It has a 12 1/2" foil blade and a locking friction device. The handle is 3 1/2" tall.-O.L. 36 1/2" \$600-\$1,200

23. Blow Dart Cane

Mid 19th Century-A 1 1/4" boxwood mouth piece knob, bamboo shaft which has a built in tube, iron ferrule and a removable horn plug. It is in excellent condition and ready for the hunt-O.L. 37" \$500-\$1,200

24. Sword Triple System Stick

Mid 19th Century-Ivory handle, bronze collar, bamboo shaft and a metal ferrule. It has a full length sword, wax seal, and a dog whistle. The fist is holding a baton on a barrel like turned collar and it is probably a piece of American Marine art.-H. 2 3/4" x 2", O.L. 32" \$500-\$1,200

23.



22.



24.



25. Ivory Monkey Cane

Dated 1900 with Hallmarks-An extremely nice carved ivory handle, stepped partridge shaft, engraved silver collar and a metal ferrule-H. 4 ½" x 1 ½", O.L. 38 ¼"
\$2,000-\$3,000

26. Brigg Coquilla Nut Monkey Cane

Victorian-Signed gilt collar, ash branch shaft and a metal ferrule-H. 2" x 1 ¾", O.L. 37 ¼"
\$600-\$1,200

27. Walrus Ivory Dress Cane

Mid 19th Century-A plain gilt collar, ebony shaft, glass eyes and an ivory ferrule-H. 5 ½" x 2", O.L. 37 ½"
\$600-\$1,200



27.

25.



26.





28.



28. Ivory Horse Cane

Late 19th Century-A finely carved ivory handle, rosewood shaft, chased and engraved silver collar, and a horn ferrule-H. 4" x 2 1/4", O.L. 38 1/4"

\$1,000-\$2,000

29. Silver Dress Cane

Early 20th Century-A figural Art Nouveau silver handle, ebony shaft, **Neu Silber** Hallmarked collar and a metal ferrule. This handle has been recently cleaned-H. 4 3/4" x 4 1/4", O.L. 38"

\$500-\$1,000



29.



30.

30. Horn Washer Cane

Late 19th Century-A dark horn crook handle with a shaft made entirely of horn rondels-H. 4" x 4", O.L. 34 3/4"

\$100-\$250

31. Silver Hog Head Cane

Late 19th Century-A large silver handle, ebony shaft, elaborate collars and a horn ferrule. The handle has Austro-Hungarian Hallmarks.-H. 5 1/4" x 3 1/4", O.L. 36 1/4"

\$800-\$1,500



31.



32. Ivory Dog Cane

Early 20th Century-Carved ivory handle, partridge shaft, gilt collar and a brass ferrule. It has inset ebony pupils and an expertly secured crack on the back of the dog's head.-H. 3 ¼" x 1 ¾", O.L. 36"

\$800-\$1,500

33. Porcelain Dress Cane

Late 19th Century-A painted porcelain ball handle, rosewood shaft, gilt collar and a horn ferrule. Diameter of the handle is 4 ¼".- O.L. 35 ¾"

\$600-\$1,000

34. .800 Silver Dress Cane

Late 19th Century-A well proportioned silver handle, rosewood shaft and a metal ferrule. It also has a silver cap and a fitted silver collar. The cane has German Hallmarks.-H. 7 ½" x 4 ¾", O.L. 36 ½"

\$300-\$500

35. Porcelain Arts and Crafts Dress Cane

Circa 1900-A ball and shaft handle with a total height of 4 ¼", a rosewood shaft, gilt metal mountings and a bronze ferrule-O.L. 38 ½"

\$600-\$1,200

35.



33.



32.



34.





36.

36. Ivory Nursery Rhyme Cane
Late 19th Century-A carved large ivory handle, Malacca shaft, wide silver collar with London Hallmarks and a metal ferrule. H. 5 1/4" x 2 1/4", O.L. 35 1/4"
\$1,500-\$2,500

37. Opaline Ball Dress Cane
Early 20th Century-Engraved overlay silver fretwork, silver collar, partridge shaft and a metal ferrule-H. 1 1/2", O.L. 31 3/4"
\$500-\$700



37.

38. Carved Lion Cane
19th Century-A carved boxwood handle, stepped malacca shaft and a brass ferrule. H- 4 1/2" x 1 3/4"
O.L. 34 1/2"
\$500-\$700



38.

39. Obsidian Dog Head Cane

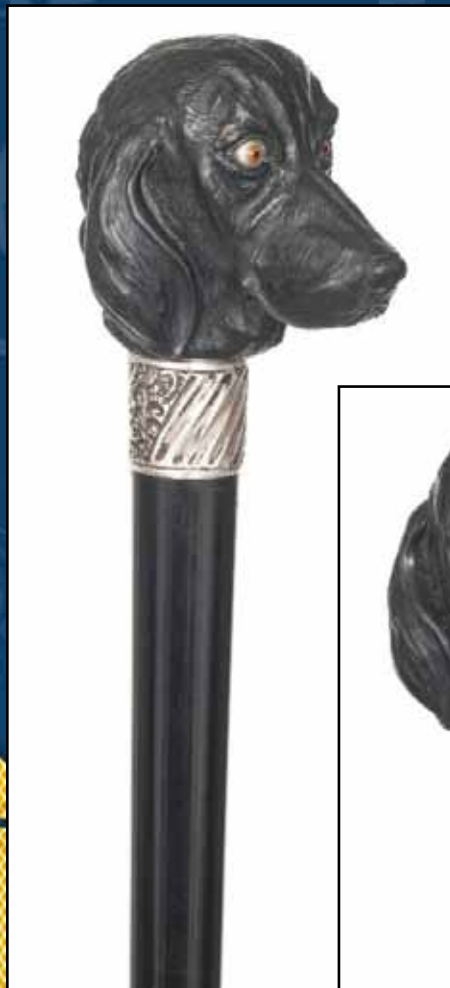
Circa 1900-Carved hard stone handle, silver collar, three color glass eyes, ebony shaft and a brass ferrule-H. 3" x 2 1/2", O.L. 36 1/2"
\$2,500-\$4,500

40. Parrot Dress Cane

20th Century-Carved fruitwood handle, glass eyes, ebonized shaft, two ivory collars, and a metal ferrule-H. 2 1/4" x 1 3/4", O.L. 38 1/2"
\$500-\$1,000

41. Flick Stick Cane

Mid 19th Century-A black thorn branch, 5" steel, pike blade which is in fine condition-O.L. 33 1/4"
\$800-\$1,200



39.



40.



41.



43.



42. Umbrella System Stick Cane
Early 20th Century-A Malacca cane which has an intact black silk umbrella, locking telescoping shaft and a metal ferrule-H. 5 $\frac{3}{4}$ " x 5 $\frac{3}{4}$ ", O.L. 34 $\frac{1}{2}$ "
\$200-\$400

43. Asian Ivory Cane
Late 19th Century-A large European ivory handle done in the Asian phallic style, ivory ring collar, a wonderful and prime example of a full bark Malacca shaft and a metal ferrule-H. 4 $\frac{3}{4}$ " x 1 $\frac{3}{4}$ ", O.L. 39"
\$2,000-\$4,000



42.

44. Millefiori Glass French Cane

Late 19th Century-A solid art glass handle, silver collar, ebony shaft and a horn ferrule-H. 1 ½" x 1 ¾", O.L. 38 ½"

\$500-\$700

45. KPM Porcelain Dress Cane

Late 19th Century-Painted porcelain handle, ebony shaft, silver collar, and a horn ferrule-H. 2" x 2 ¼", O.L. 34 ¼"

\$800-\$1,200

46. Walrus Ivory Hunting Cane

Circa 1860-Carved ivory handle, metal collar, rosewood shaft and a horn ferrule. The carving is done in very high relief-H. 4 ½" x 3 ¾", O.L. 37 ¾"

\$600-\$1,200

47. French Boxwood Cane

Late 18th Century-A carved older man's head with glass eyes, exotic wood shaft and an ivory handle-H. 2 ¼" x 1 ¾", O.L. 34 ¼"

\$500-\$1,000

48. Silver Anglo-Colonial Cane

19th Century-Silver handle, ebony shaft and a horn ferrule-H. 4 ½" x 3 ¼", O.L. 36"

\$300-\$400



48.



45.



44.



47.



46.

51.



49.

49. English Naughty Leg Cane
Circa 1875-A Victorian silver handle, rosewood shaft and a horn ferrule. This cane is probably a bludgeon cane due to its weight-H. 3 1/4" x 2 3/4", O.L. 37"
\$400-\$600

50. Obsidian Dress Cane
Early 20th Century-A well shaped knob, cloisonné collar, ebony shaft and a horn ferrule. The diameter of the ball is 1 1/2" and has a very smooth polish.-O.L. 35 1/4"
\$400-\$600

51. Ivory Mullah English Cane
Late 18th Century-An impressive handle, malacca shaft, chased silver collar and a bronze ferrule. The handle is a straight 5 3/4" bust of Mullah and ends with 4 large leaf scrolls-O.L. 36 1/2"
\$2,000-\$3,000

50.



52. Folk Art Cane

Late 19th Century-A knobby blackthorn branch with a carved dog chasing a stag, possibly American-H. 5" x 4 1/2", O.L. 36 1/2"
\$500-\$800



53. Silver French Bird Cane

Late 19th Century-A beautiful silver handle, ebony shaft, colored glass eyes and a long horn ferrule-H. 2 3/4" x 1 1/2", O.L. 36 1/2"
\$400-\$700



54. French Porcelain Dress Cane

Circa 1920-A porcelain knob which is 1 1/2" in diameter painted with flower panels, gilt collar, fruitwood shaft and a metal ferrule
O.L. 36 3/4"
\$300-\$500



55. Ivory Pistol Grip Cane-Mid 19th Century-A carved ivory handle with various high relief renditions, exotic wood shaft and a metal ferrule-H. 4 1/2" x 1 3/4", O.L. 34 1/2"
\$500-\$800



56.



56. American Folk Canea

Late 19th Century-Carved fruitwood handle, cherry branch shaft, metal collar and metal ferrule-H. 3 3/4" x 4 3/4", O.L. 33"
\$500-\$800



57.



58.

57. Rose Quartz Dress Cane

Early 20th Century-The handle is 1 ½" in diameter and shows some crystallization, silver collar with hallmarks, ebony shaft and a horn ferrule-O.L. 38 ½"

\$400-\$600

58. Knob Kerrie Bronze Cane

19th Century-Heavy bronze handle, leather collar, full bark malacca shaft and a horn ferrule. The handle is 5 ½" high and is cast in the shape of an exotic bird-O.L. 37 ½"

\$500-\$1,000

59. Far Eastern Silver Cane

Late 19th Century-Large silver handle which is 3 ¾" high, malacca shaft and a horn ferrule-O.L. 38 ¼"

\$500-\$1,000

60. Rare Child's Cane

Late 19th Century-A silver handle with Far-Eastern hallmarks, ironwood shaft and a silver ferrule. The diameter of the ball is 1 ½" and the cane is in near mint condition-O.L. 17 ½"

\$300-\$600



59.



60.



61. Horn Horse Cane

Circa 1870-A dark horn handle with big glass eyes, twisted blackthorn shaft, wire metal collar, original eyelets and a metal ferrule-H. 2 ¾" x 2 ¼", O.L. 36 ½"
\$600-\$900

62. KPM Porcelain Dress Cane

Late 19th Century-A floral 1 ¼" handle, rosewood shaft and a gilt ferrule-O.L. 34 ¼"
\$500-\$1,000

63. Silver Horse Head Cane

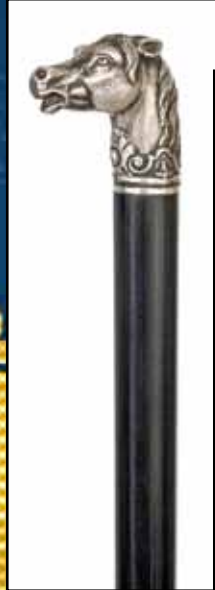
Late 19th Century-A nice figural handle which is hand chased to depict a horse head, ebony shaft and a horn ferrule-H. 1 ¾" x 1 ¾", O.L. 37 ¾"
\$500-\$800

64. Ivory Skull Cane

Circa 1890-A carved ivory Memento Mori handle with two skulls, ironwood shaft, silver collar and a brass ferrule, superb quality-H. 4" x 1 ½", O.L. 34"
\$1,200-\$1,600



62.



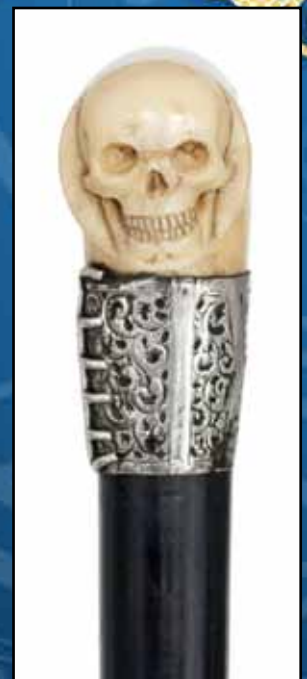
63.



61.



64.

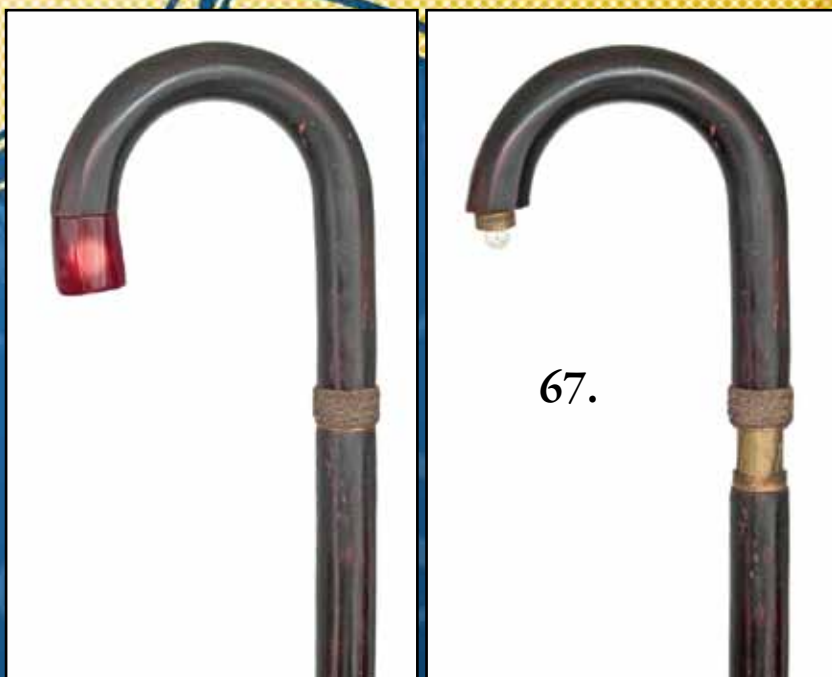




65.



66.



67.

65. Hammered Silver Dress Cane

Circa 1880-A heavy hammered handle with unreadable hallmarks, rosewood shaft and a horn ferrule-H. 3" x 1 1/4", O.L. 33 3/4" \$300-\$500

66. Silver Derby Dress Cane

Circa 1870-A finely decorated silver handle, rosewood shaft and a horn ferrule-H. 2 1/4" x 4", O.L. 37" \$400-\$500

67. Flashlight System Stick Cane

Circa 1915-An ebonized fruitwood crook handle, metal wire collar, bakelite knob and a horn ferrule. The cane appears completely intact with all operable parts but batteries are unavailable to us for this cane.-H. 5 1/2" x 5", O.L. 35 3/4" \$400-\$600

68. Anglo-Colonial Cane

19th Century-A horn handle with an ivory cap, stacked ivory and ebony collar, specimen wood washers shaft and a long brass ferrule-H. 4 1/4" x 3 1/4", O.L. 36" \$500-\$800



68.

69. Ivory Kris Dress Cane

Mid 19th Century-Carved floral ivory panels, malacca shaft, engraved silver collar and large metal ferrule-H. 3 ½" x 2 ½", O.L. 35 ½"

\$800-\$1,200

70. Silver and Enamel Dress Cane

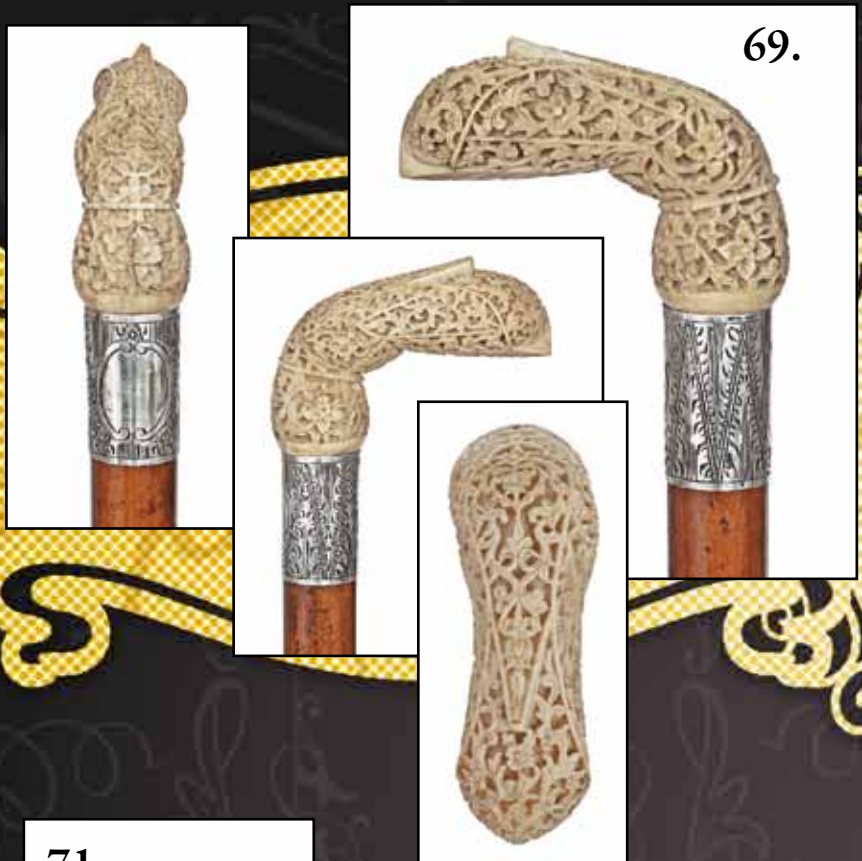
Late 19th Century-A blue enamel 1 ¾" knob, Austro-Hungarian hallmark, G.A.S. maker's mark for Jeorg A. Scheid, rosewood shaft and a brass ferrule-O.L. 37"

\$400-\$700

71. Ivory Pistol Grip Cane

19th Century-A carved ivory handle with a peacock, gilt collar, ebony shaft and a staghorn ferrule-H. 4" x 1 ¾", O.L. 41"

\$1,000-\$1,500





72.

72. Ivory Cat and Child Cane

Late 19th Century-An expertly carved ivory handle, bamboo shaft, leather collar and bronze ferrule-H. 2 ¼" x 1 ½", O.L. 38 ¼"

\$1,500-\$1,800

73. Silver Dress Cane

Circa 1875-A fine 4 ¾" tall silver dress handle, coconut palm wood shaft and a horn ferrule-O.L. 38 ¾"

\$400-\$800

74. Ivory Greyhound Cane

Late 19th Century-A large carved handle, malacca shaft, metal collar, glass eyes and a metal ferrule-H. 4" x 1 ½", O.L. 31 ½"

\$1,000-\$1,200

75. Ivory German Dress Cane

Circa 1870-An L shaped ivory handle, malacca shaft and a horn ferrule-H. 3 ¾" x 3 ½", O.L. 35"

\$400-\$700



73.



75.



74.

76. Silver Dress Cane

Early 20th Century-An 800 silver dress handle with the maker's mark E.G.Z., ebony shaft and a horn ferrule-H. 4" x 2", O.L. 35 1/4"
\$400-\$600

77. Ivory Claw Cane

Late 19th Century-A finely carved claw with all of its joints, rosewood shaft, leather collar and a metal ferrule-H. 4 1/4" x 2 3/4", O.L. 33 3/4"
\$1,000-\$1,500

78. Noh Masks Ivory Cane

Late 19th Century-A Japanese export 1 1/2" ivory knob, ebony shaft, and a horn ferrule O.L. 37 1/2"
\$400-\$600

79. German Folk Cane

Late 19th Century-A bizarre knob grown vine shaft with a white metal ferrule-O.L. 35"
\$800-\$1,500

79.



76.



78.



77.





80.



82.

80. Ivory Ram's Head Cane

Hallmarked 1900-A finely carved ivory handle with the name Fred Simmons engraved, ebony shaft, silver collar and a horn ferrule-H. 2 3/4" x 2 1/2", O.L. 37"

\$1,200-\$1,800

81. Wildcat Dress Cane

Late 19th Century-A 1 1/4" vermeil knob, two color exotic wood shaft and a horn ferrule. The shaft is probably grenadil wood. It has a pair of what appears to be green emeralds eyes and is probably French.-O.L. 37 1/4"

\$700-\$1,200

82. Ivory Cherub Cane

Hallmarked 1897-A large 5 1/2" ivory handle carved in high relief, ebony shaft, silver collar, round cap with Sheffield hallmarks and a maker's mark of A&D. and a staghorn ferrule-O.L. 37 3/4"

\$1,000-\$1,500

81.



83. Ivory Duck Cane

Late 19th Century-Carved ivory handle, malacca shaft, and a 3" ivory ferrule-H. 3 1/4" x 2 1/4", O.L. 35 3/4"

\$2,000-\$3,000

84. Walrus Ivory Dog Cane

Circa 1875-A carved ivory handle with two dog heads, malacca shaft, metal collar and a long ivory ferrule-H. 5" x 4", O.L. 34 3/4"

\$500-\$800

85. French Silver Dress Cane

Circa 1880-Silver crook handle, hardwood shaft with a stained snake pattern, unidentified dog hallmark and a metal ferrule-H. 3 1/2" x 2", O.L. 33 3/4"

\$400-\$600



83.



84.



85.

86.



86. Horn and Silver

Aristocrat's Cane

Mid 18th Century-A horn and bone 5 ½" high handle, silver engraved collar, malacca shaft and a 5" brass ferrule with an iron tip. A very nice example of a nice early cane
O.L. 35 ¼"

\$1,500-\$2,000

87. Ivory Gothic Style Cane

Mid 19th Century-A carved ivory hunting scene above a gothic arch panel, malacca shaft and a 2 ¾" walrus ivory ferrule. The handle is 5 ¼" tall.-O.L. 37 ½"

\$2,000-\$3,000

87.



91.

88. English Frog Vesta Cane

Circa 1900-The figural silver handle, ebonized tropical wood shaft, and a horn ferrule. The knob unscrews to reveal a glass container for 2 cigarettes and the head of the frog covers a match container with a striking surface on it's back.-H. 2 ¾" x 1 ½", O.L. 36"
\$1,000-\$1,500

89. KPM Porcelain Dress Cane

Late 19th Century-A nice porcelain handle with gold lined scroll work, ebony shaft, gilt wire collar and a horn ferrule-H. 4" x 1 ½", O.L. 37 ¼"
\$1,000-\$1,200

90. Silver Dress Cane

Late 19th Century-A totally engraved handle, ebony shaft and a stag horn ferrule-H. 5" x 4", O.L. 35 ½"
\$500-\$1,000



90.



88.

89.

92.



91.



94.



93.



91. Ivory Lady Cane

Circa 1880-A carved ivory crook handle, ebony shaft, ivory collar and a metal ferrule-H. 4 1/2" x 3 3/4", O.L. 37 1/2"

\$1,000-\$1,200

92. Ivory and Horn Washer Cane

Circa 1920-Probably a Pictaim Island Cane, a 3" tropical wood knob, an ebony shaft and a horn ferrule-O.L. 37 3/4"

\$200-\$300

93. Rolled Gold Presentation Cane

Circa 1875-A monogrammed 4" high handle, tall snakewood shaft and a horn ferrule. It is also struck with RGP.-O.L. 42 1/2"

\$400-\$600

94. Ivory Cob Cane

Late 19th Century-A 5" tall carved ivory handle, ebony shaft, silver collar, and a horn ferrule-O.L. 37"

\$500-\$800

95. English Dress Cane

Hallmarked 1901-A finely engraved 2 1/4" handle, rosewood shaft and a horn ferrule O.L. 37 1/2"

\$200-\$300

95.



96. French Monkey Cane

Late 19th Century-Dark patina,
rosewood shaft and a horn
ferrule-H. 4 ½" x 1 ¾",
O.L. 34 ½"
\$300-\$600

97. Ivory Dog Cane

Circa 1850-Ivory dog with belt
collar, honey malacca shaft with
eyelets and a metal ferrule-H. 2" x
2", O.L. 37 ½"
\$600-\$1,200

98. Ivory Statesman Dress Cane

Circa 1850-A well carved ivory
knob, lemonwood shaft, washer
collar.-H. 2 ½" x 1 ½", O.L. 32 ¾"
\$500-\$800

99. Silver Dress Cane

Circa 1900-An elegant silver
handle, ebonized shaft and a metal
ferrule-H. 5 ½" x 3", O.L. 32 ¾"
\$300-\$600



99.



96.



98.



97.



100. French Erotic Ivory Cane
Late 19th Century-A long carved ivory handle of two people in an embrace, malacca shaft and a matching ferrule. This is a fine example of French erotic carving.-H. 5 $\frac{3}{4}$ " x 2 $\frac{1}{2}$ ", O.L. 35"
\$5,000-\$7,000

100.



101. Japanese Ivory Cane

Late 19th Century-A detailed ivory carving, ebony shaft, silver collar and a horn ferrule-H. 2 $\frac{3}{4}$ " x 1 $\frac{1}{2}$ ", O.L. 38 $\frac{1}{2}$ "

\$1,200-\$1,800



101.

102. Walrus Ivory Pigeon Cane

Circa 1870-A carved handle with two pigeons done in high relief, malacca shaft, silver collar and an ivory ferrule-H. 4 $\frac{3}{4}$ " x 3 $\frac{1}{4}$ ", O.L. 33 $\frac{1}{2}$ "

\$1,000-\$1,300



102.

103. Japanese Export Ivory Cane

Meiji Period-A nice ivory export handle which is carved to look much like a narwhal tusk, ebony shaft, ivory collar and a horn ferrule-H. 3 $\frac{1}{4}$ " x 1 $\frac{1}{2}$ ", O.L. 35"

\$1,500-\$2,000



103.

104. Ivory Art Nouveau Dress Cane

Late 19th Century-Probably a German ivory handle, ebony shaft and a missing ferrule-H. 3 $\frac{3}{4}$ " x 3 $\frac{1}{4}$ ", O.L. 38 $\frac{1}{4}$ "

\$1,000-\$1,500



104.

**105. Jeweled Russian
Pillbox Cane**

Hallmarked 1855-1888-A faceted sapphire, clear hallmarks for Viktor Savinkov, Moscow, ebonized shaft and a silver ferrule-H. 3" x 1 3/4", O.L. 36 3/4"

\$1,000-\$1,500

106. French Ivory Dress Cane

Mid 19th Century-Large ivory knob, rosewood shaft and a horn ferrule-H. 2 1/2" x 1 3/4", O.L. 34 1/2"

\$400-\$600

107. Hippo Ivory Cane

Circa 1875-Carved ivory hunting cane, ebony shaft, silver collar and a horn ferrule-H. 4 1/4" x 1 1/4", O.L. 37 3/4"

\$500-\$1,000

108. Bulldog Glove Holder Cane

Late 19th Century-An automated 3 1/2" fruitwood knob and shaft, leather collar and horn ferrule. By pushing the lever under the chin the bulldog opens his mouth to show his red tongue and teeth.

O.L. 37 3/4"

\$400-\$600



105.



106.



107.



108.

109. Ivory Dog Cane

Circa 1870-An ivory opera dog handle, ebony shaft, silver collar and a horn ferrule-H. 4 1/4" x 1 1/2", O.L. 32 1/2"

\$500-\$800

110. German Pomander Cane

Early 19th Century-A staghorn 3 1/4" high handle which was used to hold a vinegar-based ball of spices, paper washer shaft and a metal ferrule. My wife said these were also used to keep witches away.- O.L. 35 1/2"

\$700-\$1,500

111. Pipe System Stick

Late 19th Century-A two inch tall knob handle which is a pipe bowl, a metal stem with an amber mouth piece, fruitwood shaft and a metal ferrule. This pipe has probably never been used and has its original inventory label.-O.L. 36"

\$300-\$500



114.



112.



112. Silver Parrot Cane

Late 19th Century-A parrot with glass eyes, London hallmarks, partridge shaft and a metal ferrule-H. 4 ½" x 3 ½", O.L. 36 ½"
\$400-\$600

113. Horn Dress Cane

Circa 1915-A horn handle, ebony and ivory collar and a bronze ferrule-H. 4 ¼" x 4 ½", O.L. 35"
\$300-\$500

114. Porcelain Dress Cane

Circa 1925-Probably Scandinavian, ebony collar, full bark malacca shaft and a horn ferrule-H. 3 ½" x 2", O.L. 38"
\$700-\$1,200

115. Roundel Horn Cane

Early 20th Century-Different types of horn Roundel's with a few of them possibly being rhino, bone segments, and a horn ferrule-H. 4 ¾" x 4 ¾", O.L. 35"
\$300-\$500

116. Physician's Bone Cane

Circa 1875-A two piece handle, ebony shaft and a horn ferrule-H. 4 ¾" x 3 ¾", O.L. 37 ¼"
\$600-\$1,000



116.



115.



113.

117. Tula Russian Dress Cane

Circa 1900-A 1" Silver cap, ebony shaft and a horn ferrule-O.L. 36"
\$200-\$300

118. Ivory Dress Cane

Circa 1870-A large ivory handle, metal collar, malacca shaft and a bone ferrule-H. 5 1/2" x 3", O.L. 38"
\$600-\$1,200

119. French Silver Dandy Cane

Circa 1900-Gilt silver handle, rosewood shaft and a horn ferrule-H. 1 1/2" x 1", O.L. 36"
\$300-\$400

120. Silver Dress Cane

Hallmarked London 1886-A chased silver 1 1/2" handle, ebony shaft and a horn ferrule-O.L. 36"
\$200-\$300

117.



118.



120.



119.



121.



121. Rhino Sword Cane

Circa 1890-A 1 3/4" rhino horn knob set with a rhino horn horse head roundel, rosewood shaft and a metal ferrule. There is a 14 3/4" square jeweled and etched Toledo steel blade with a friction lock. Mint condition-O.L. 37"

\$2,000-\$2,500

122. Watch System Stick Cane

Circa 1885-A white metal cased knob, ebonized shaft and a horn ferrule. The 2 1/4" knob is fitted with a cylinder movement, winding watch. It has an enamel signed Brevete dial. The movement is in need of servicing.- O.L. 36 1/2"

\$1,200-\$1,800

122.



123. Rhino Dress Cane

Circa 1880-A French one piece rhino crook handle and collar, rosewood shaft and a horn ferrule-H. 6 ½" x 4", O.L. 37"
\$700-\$1,200

124. Silver Pomander Cane

Circa 1850-A good English cane with hinged and gilt inserts, ebony shaft and a brass ferrule-H. 6" x 1 ½", O.L. 37"
\$400-\$600

125. French Sword Cane

Early 19th Century-A hardwood 3 ½" handle in the shape of a human bone, metal collar, bamboo shaft and a steel ferrule. The high grade shaft has a 30 ¾" finely engraved steel blade.-O.L. 36"
\$800-\$1,500



124.



125.



123.





126. Ivory Dog Cane

Circa 1870-A carved handle done in nice detail with crystal eyes, carved collar, ebony shaft and a brass ferrule-H. 2 ¾" x 2 ¼", O.L. 34 ¾"

\$700-\$1,000

127. Ivory Owl Cane

Circa 1880-A carved ivory handle, ebony shaft, braided silver collar and a long ivory ferrule-H. 4 ¼" x 3 ¼", O.L. 30 ½"

\$400-\$600

128. Hardstone Dress Cane

Early 20th Century-A Labradorit knob, art nouveau collar, ebony shaft and a horn ferrule-H. 1 ½" x 1 ½", O.L. 38 ¼"

\$400-\$500



129. Art Nouveau Dress Cane

Late 19th Century-Seven inch silver stem with flowers, ebony shaft and a brass ferrule, German hallmarks.-O.L. 37 1/4"

\$300-\$500

130. English Dandy Cane

Circa 1890-A 6" rolled gold handle, ivory plinth, rosewood shaft and a brass ferrule-O.L. 36 1/4"

\$300-\$500

131. Silver Dress Cane

Circa 1890-A well chased and hallmarked silver handle, ebony shaft and a horn ferrule- H. 3 1/4" x 2", O.L. 33 1/4"

\$300-\$500

132. Falcon Eye Dress Cane

Circa 1890-A falcon eye 3 3/4" ball on an angled mother-of-pearl stem, gilt collars, rosewood shaft and a horn ferrule-O.L. 35 1/2"

\$400-\$600



132.



130.



129.



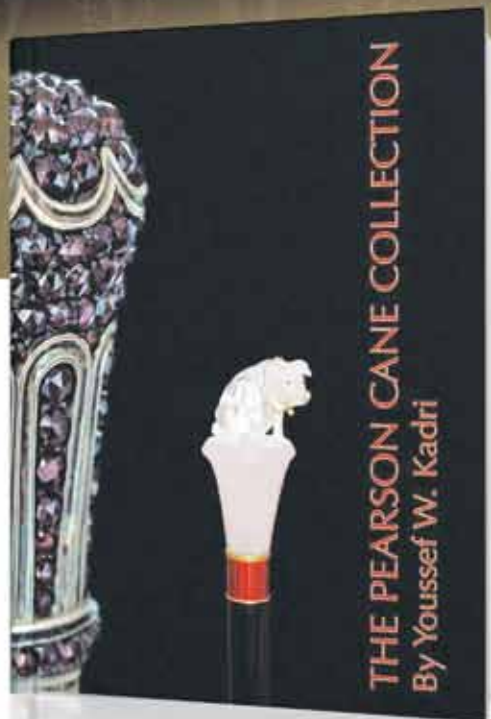
131.

KIMBALL M. STERLING, INC.

Dear Cane Enthusiast,

I am happy to announce the release of a new and exciting book
THE PEARSON CANE COLLECTION.

It is a 210 page, full color hardback book highlighting the World class collection of Bob Pearson. The book has been written by Youssef Kadri and is a must addition to your library.



\$130.00

+\$6.00 shipping

The book may be
ordered by phone
423.773.4073
or email

kimballsterling@earthlink.net

Kimball M. Sterling, Inc. (TFL-1915)
125 West Market Street
Johnson City, Tennessee 37601
kimballsterling @ earthlink.net
423.928.1471

Member National Auctioneers Association
© Copyright 2010 Kimball M. Sterling, Inc.



Photography by *James Price*

Catalog Design by *KT Design, LLC*
www.kristaft.com