



Kimball & Victoria Sterling present

THE
NASHVILLE
ANTIQUE
CANE
AUCTION

Saturday, November 9th
11:00 a.m. CST



TERMS & CONDITIONS

1. Cash or check. A 20% buyers' premium will be added to the hammer price as part of the sale price for all bidders. Internet bidders will pay 23%. We reserved the right to hold purchases until the buyers checks clears if buyer is not known by us. Bank letter of credit is acceptable.

2. Mail or phone bids are accepted; the firm may require a deposit.

3. Kimball M. Sterling, Inc. has endeavored to catalog and describe the property correctly. All property is sold as is and neither the auction company nor the consignor will be responsible for descriptions, genuineness, provenance or condition of the property. No statement in the catalog made orally at the sale or otherwise shall be deemed to be a warranty, representation, or an assumption of liability.

4. In the event of any dispute between bidders, the auctioneer shall have total discretion to determine the successful bidder, in which his determination shall be final or to re-offer and resale the article in dispute. Title of the item or items purchased by the bidder will pass at the fall of the gavel and declaration of bidder. This is not an approval auction. All measurements are approximate.

5. Principal auctioneer: Kimball M. Sterling #2467. B. Elizabeth Sterling, auctioneer # 5757. Firm Kimball M Sterling Inc. TFL-1915

6. Bidders may bid live on the Internet by visiting <http://www.auctionauction.com> You may also view the auction at this site and bid by phone.

7. Communications:
Telephone 423-928-1471.
Fax 423-928-2816.
Cellular 423-773-4073, 423-773-4072.
Email kimballsterling@earthlink.net

8. Kimball M Sterling has worldwide shipping available. We do not ship protected items overseas but can put you in contact with a source that is very reliable and can handle all of your needs.

9. Kimball M. Sterling, Inc. will not be held responsible for bids received on the day of the auction, unexecuted absentee bids, phone bidders not contacted or slow Internet bids. Although we do attempt to get all bids executed problems do occur. There will be no recourse from the bidder. We will not be responsible for items left on our location for over 30 days.

10. Sale will be conducted at Nashville Marriott Hotel located at 600 Marriott Drive Nashville, Tennessee, 37214. (615) 889-9300 Any litigation that pertains to this auction will be conducted in the county of Washington in Tennessee and is agreed upon by registering for this auction.

12. Please call for condition report on sale lots or email us. We do send out multiple photos by email of any lot in the auction .By registering for this auction you accept the terms.

13. Parking service is free.



Saturday, November 9th

11:00 a.m. CST

Nashville Airport Marriott

Preview:

Anytime before the auction by appointment

Saturday, November 9th at 9:30 a.m.

Live on the internet at
LIVEAUCTIONEERS.COM

Two Time Winner of Best of Show
from the National
Auctioneers Association

Kimball M. Sterling Auction Gallery
125 West Market Street
Johnson City, Tennessee 37601
[kimballsterling @ earthlink.net](mailto:kimballsterling@earthlink.net)
423.928.1471

www.AuctionAuction.com



1.

1. Large Elephant Head Cane

Ca. 1920-Hardwood elephant head with ivory tusks and inset glass eyes, plain silver collar, ebony shaft and a horn ferrule. Impressive size and quality. H. 4 ½" x 3", O.L. 36"

\$700-\$900

2. Ivory Cat Head Cane

Ca. 1890-Substantial ivory naturalistically carved cat head knob with long whiskers, glass eyes and bowtie, gilt metal collar stamped "RANGSTER", well dressed malacca shaft and a stag horn ferrule. This cane strikes the essence of cat portraiture and brings up the feline personality in a lovable way. It was perhaps the bright color of the ivory which motivated the previous owner to call this cane "White Princess". H. 3 ½" x 2", O.L. 38 ½"

\$2,000-\$3,000

3. Ivory Cats Cane

Ca. 1897-Straight walrus ivory handle carved with three cats in a cleft with jagged edges, finely engraved silver collar with Chester hallmarks 1897, ebony shaft and a metal ferrule. H. 4 ¼" x 1 ½", O.L. 34 ¾"

\$1,000-\$1,500



2.



3.



4.



4. Jade Figural Cane

Late 19th, early 20th Century-Large mottled jade frog on a plinth handle, ruby cabochon eyes in gold framing, silver collar, rosewood shaft and a horn ferrule. This cane is in the taste of Carl Faberge, has possibly Russian ties and belongs to the upscale jewelry Objects of Virtue. H. 3 ½" x 2", O.L. 37 ½"

\$4,000-6,000

5. Ivory Cat Head Cane

Birmingham hallmarks 1892. Well carved cat head with two large eyes and a pair of upwards extending, prominent ears marked by a long and bushy fur. Malacca shaft with a long stag horn ferrule and embellished with silver collar engraved by hand and monogrammed.

H. 3 ¼" x 2 ¼", O.L. 34 ¼"

\$1,200-\$1,600

5.



6. Oak Frog Cane

Ca. 1920-Large oak handle carved to depict a leaping frog on a ball, inset glass eyes, metal collar, well dressed naturally knobby branch shaft and a metal ferrule. H. 3 ¾" x 3", O.L. 34 ¾"

\$400-\$600

7. Spectacular Elephant Cane

Ca. 1880-Substantial ivory knob carved in fine and naturalistic detail as a full bodied elephant on a tree trunk. The bulk animal is amazingly adapted to the form of the handle and comes on a rosewood shaft with silver collar and a stag horn ferrule. H. 3 ½" x 3", O.L. 38 ½"

\$3,000-\$4,000

8. Early Gold Dress Cane

Beginning of the 19th Century-Stretching pommel shaped 21 karat yellow gold knob hand chased and engraved with two panels showing flower baskets hanging on knotted ribbons. Ebony shaft and a horn ferrule. A French origin is authenticated by two tiny hallmarks on the wide collar. H. 4 x 1 ¼", O.L. 40"

\$4,000-\$5000



6.

7.



8.



9.



9. Silver Nobleman's Cane

18th Century-Silver pommel knob finely hand chased and engraved in the Louis XVI style, malacca shaft with eyelets and a 6" tall metal ferule. French parentage. H. 2" x 1", O.L. 39 1/2"
\$800-\$1,200

10. Art Nouveau Ivory Cane

Ca. 1900-Crook ivory handle with a woman's face framed by its curvaceous hair festooned with flower, silver collar and obscured London hallmarks and a malacca shaft with a stag horn ferrule. H. 4" x 2 3/4", O.L. 38 1/2"
\$1,000-\$1,200

11. Hard Stone Dress Cane

Ca. 1920-A sizeable blue stone knob of the lapis lazuli family fashioned in a plan, tapering and elongated Milord shape, ebony shaft with a silver collar struck with Birmingham hallmarks and a horn ferrule. H. 2 3/4" x 1", O.L. 36"
\$600-\$800

10.



11.



12.

12. Ivory Nude Cane

19th Century-Standing nude study carved of one piece of blameless and fine grained ivory, well-dressed malacca shaft and an ivory ferrule. The figure was obviously granted the attention and skill that an artist gives to a selected creation and is imbued with great sensitivity. Superb condition. H. 5 $\frac{3}{4}$ " x 2", O.L. 39 $\frac{1}{2}$ "
\$5,000-\$6,000



13.

13. Figural Art Nouveau Dress Cane

Ca. 1900-Silver crook handle beautifully modeled with a reclining beauty in the Revival taste. The figure is distinguished by glorious proportions and its striking jewelry. It has a great fit to the hand and comes on a rosewood shaft with a rubber ferrule. French origin. H. 4 $\frac{1}{4}$ " x 3 $\frac{1}{4}$ ", O.L. 35 $\frac{1}{4}$ "
\$1,800-\$2,500



14.

14. Figural Ivory Dress Cane

Ca. 1860-Gracious ivory handle carved in the taste of the antique to depict a Roman male bust presented on an elongated, turned ivory plinth collar, ebony shaft and a tiny brass ferrule. H. 2 $\frac{3}{4}$ " x 1 $\frac{1}{2}$ ", O.L. 37 $\frac{1}{4}$ "

\$800-\$1,200

15. Figural Ivory Dress Cane

Ca. 1860-Matching gracious ivory handle carved in the taste of the antique to depict a Roman female bust presented on an elongated, turned ivory plinth collar, ebony shaft and a tiny brass ferrule.

H. 2 $\frac{3}{4}$ " x 1 $\frac{1}{4}$ ", O.L. 37 $\frac{1}{2}$ "

\$800-\$1,200

16. Ivory Cat and Vine Cane

19th Century-Very fine carved 3 $\frac{1}{2}$ " long ivory clamping cat on a one piece bizarre knobbed wild vine with bulb root as knob and a metal ferrule. Possibly Russian. O.L. 35 $\frac{1}{4}$ "

\$2,000-\$3,000

16.



15.



17. Satirical Cat Cane

19th Century-Boxwood handle carved to depict a humanized cat head with a sailor-like hat and knotted scarf, glass eyes, oak shaft, plain silver collar and a horn ferrule. French.

H. 2 ¾" x 1 ¾", O.L. 36"

\$1,500-\$2,200

17.



18. Twin Tailed Siren Erotic Cane

Ca. 1870-Very large L-shaped carved ivory handle of a nude twin tailed siren exposing her pulchritude, malacca shaft with a bound leather collar and a brass ferrule. French erotic micro carving. H. 8 ½" x 4 ½", O.L. 36"

\$2,000-\$2,800

18.



19. Hard Stone Dress Cane

Ca. 1900-Intense red Jasper ball knob on its elaborated silver gilt collar, malacca shaft and a long horn ferrule. French.

H. 2 ½" x 1 ¼", O.L. 29"

\$600-\$800

19.



20.



20. Shibayama Ivory Dress Cane

Late 19th Century-This Japanese straight and tapering turned handle has flowering twigs, bamboo plants, insects and birds which are masterfully carved and decorated with 24 karat gold lacquer and semi-precious gem stones inlay. The sizeable handle with turned integral collar comes on an ebony shaft with a brass ferrule. H. 9 ¾" x ¾", O.L. 39 ¼"
\$2,000-\$3,000

21. Japanese Ivory Rat Cane

Ca. 1880-Ivory knob precisely carved with a naturalistic rat study, tortoiseshell inlay in the eyes, honey malacca shaft and a metal ferrule. H. 1 ¾" x 1 ¼", O.L. 32"
\$700-\$900

22. Lacquer Dress Cane

Ca. 1880-L-shaped Japanese gold dust lacquer handle with scattered stylized blooms on an ethereal background, structure and color matching cocobolo shaft with a horn ferrule. H. 5 ¼" x 2 ¾", O.L. 36 ¾"
\$800-\$1,200

22.

21.



23. Figural Ivory Day Cane

Ca. 1890-A large ivory upright standing budgie with very fine and detailed feathers and two inset dark eyes, silver collar with applied rings, ebony shaft and an ivory ferrule. English. H. 3 1/4" x 1 1/4", O.L. 37 1/4"

\$700-\$1,000

24. Nautical Whale Bone Cane

Ca. 1880-Large walrus ivory handle carved to depict a whale on a single piece and plain whalebone shaft with topped by a 2 1/4" long and well calibrated tropical wood, baleen and whale tooth washers stem. The whale is naturalistically rendered on waves and embellished with ebony inlay in the eyes.

H. 5 1/2" x 1 1/2", O.L. 35 3/4"

\$1,500-\$2,500

25. Nautical Figural Whale Cane

Ca. 1880-Very large whale tooth handle carved to depict a whale on a turned whalebone stem carved with a rope pattern. The whale is beautifully integrated in the natural shape of the tooth and has a humorous cartooned approach and two large eyes inset with dark baleen. The handle shows a little old repair to the right back fin and comes on a malacca shaft with a metal ferrule. H. 5 5/4 x 1 1/2", O.L. 35 3/4"

\$2,000-\$3,000

24.



25.



23.





26.

26. Stingray Tail Cane

19th Century-Fashioned of the tail of a giant *Dasyatis Sephen* Stingray tail with a dark greenish needle-harsh cutting surface and two impressive 7 1/2" and 5 1/2" tall barbed venom darts. The cane is topped by a T-shaped shagreen handle and fitted with a metal ferrule. H. 4 1/4" x 1 1/2", O.L. 35 3/4"
\$800-\$1,200

27. Ivory Fish Cane

Ca. 1900-Large ivory crook handle carved to depict a pike with a smaller fish in its mouth. The larger fish has a curving body with well figured scales and fins and a long head with big eyes above alluded waves. Silver collar engraved "Dr. H. Fischer, Biberach." Ebony shaft and a horn ferrule. H. 4 1/2" (6 1/2" along the outside curving) x 2 1/4", O.L. 36 3/4"
\$1,500-\$2,000

28. Lizard Day Cane

Ca. 1900-Hardwood lizard handle and its plain silver collar, naturally bizarre grown wild vine shaft and a brass ferrule. H. 4 3/4" x 3 1/2", O.L. 36 1/2"
\$400-\$600

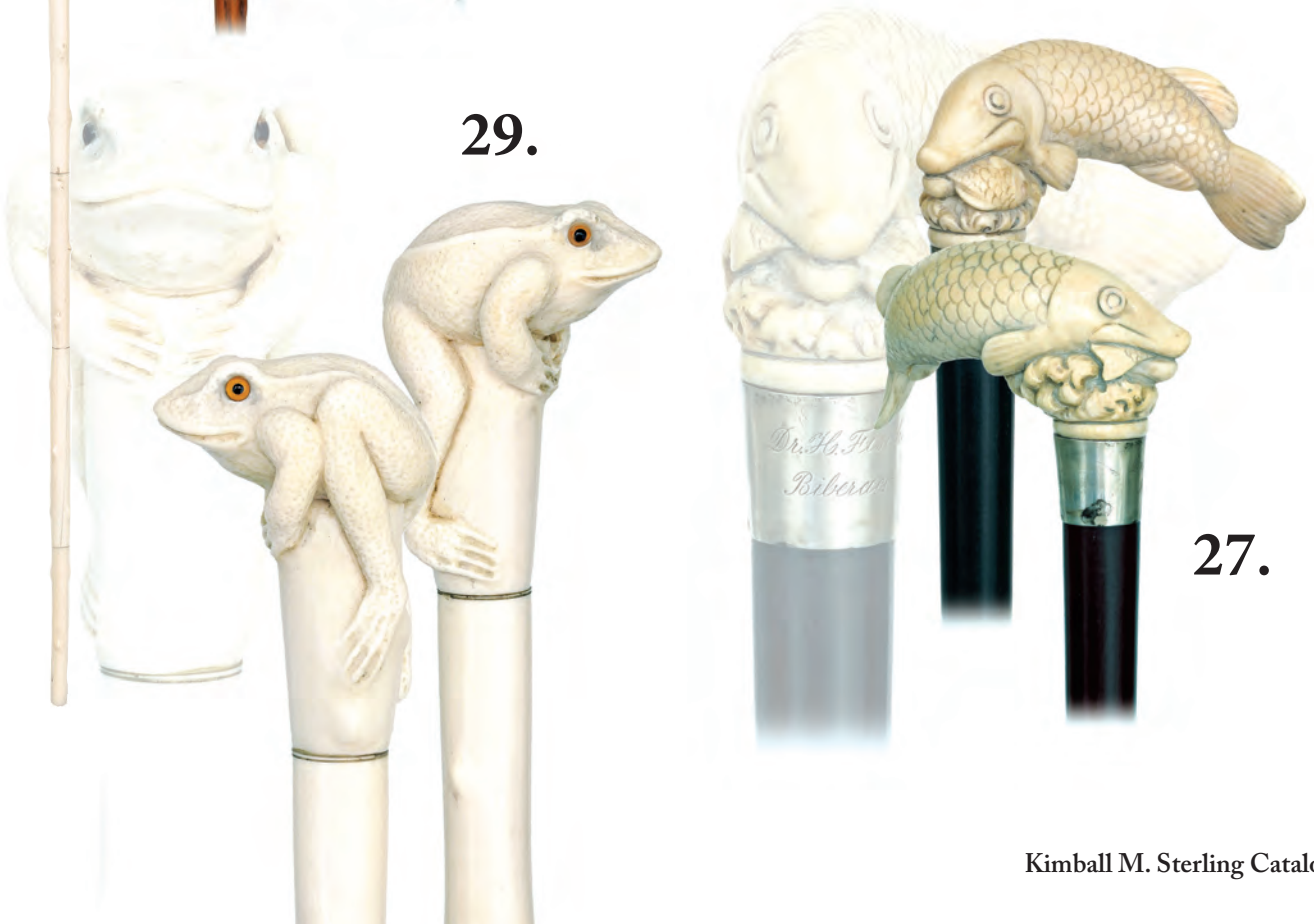
28.

29. All Ivory Frog Cane

Ca. 1900-Squatting ivory amphibian perched on top of the knob with clamping front legs. The likeable flair of the frog with apparent back ridge is emphasized by a slightly raised head with two protruding inset glass eyes. Segmented faux sprig all ivory shaft. H 2 1/2" x 1 3/4", O.L. 35 1/4"
\$1,500-\$2,000

29.

27.



30. Ivory Snake Cane

19th Century.-Large and stretching L-shaped handle with a coiled snake and a collar in the shape of a belt with buckle, ebony shaft and ivory ferrule.

H. 7" x 3 1/2", O.L. 36 1/2"

\$1,000-\$1,200

31. Physician's Ivory and Burr Wood Snake Cane

Ca. 1880-A very unique English example of a substantial carved pistol shaped burr wood knob with an applied ivory coiling cobra embellished with a gold forked tongue and two inset brilliant eyes. Ebony shaft with a horn ferrule and a silver collar with obscured engravings.

H. 3 1/2" x 2 3/4", O.L. 36 3/4"

\$800-\$1,200

32. Physician Ivory and Horn Cane

19th Century-Plain L-shaped ivory handle with a coiled dark horn snake, fine grained rosewood shaft with a bound leather collar and a horn ferrule. The reptile is distinguished by a high relief and a large head with well figured scales and ivory inlay in the eyes.

H. 4 1/2" x 3 1/2", O.L. 35 1/4"

\$800-\$1,200

33. Massive Ivory Hound Dog Cane

Ca. 1900-The largest handle we have seen, detailed carving, two color eyes. H & F British hallmarked silver collar, large ebony shaft and a horn ferrule.

H. 5 1/4" x 2 1/4" x 1 1/2", O.L.- 37"

\$2,000-\$3,000



34.



34. Jewelry Dress Cane

Ca. 1900-Intense blue lapis lazuli ball knob on a trumpet-like silver guilloche and yellow enameled collar-podest, coco palm wood shaft and a metal ferrule. The knob is in the Russian taste and bears obscured European hallmarks. H. 2" x 1 3/4", O.L. 36 3/4"

\$500-\$700

35. Sword Cane

Ca. 1890-L-shaped, plain silver handle with 18 karat gold application on the nose and collar on a well streaked rosewood shaft with a horn ferrule. 6 1/2" down from the top, the shaft breaks in two pieces through a friction lock device to release a 14 1/4" square, beautifully jeweled and etched steel blade signed "FTJ" and "MAXIMUS". First rate. H. 3 1/2" x 2 1/4", O.L. 33"

\$1,200-\$1,800

35.



36. Rajasthan Dagger Cane

20th Century-All steel silver damascene cane with a substantially modified derby shaped handle ending with a tiger head which unscrews to reveal a 5 1/2" long blade. The shaft breaks down into two parts for better storage and is fitted with an integral 3 1/2" inch long and pointed ferrule. A decorative parade cane with extensive silver inlay. H. 6" x 4", O.L. 37"

\$1,000-\$1,500



36.

37. Flick Stick Cane

19th Century-Ivory knobbed malacca cane with an ivory ferrule and an ejecting angular and 7 ¼" tall spike blade with a white metal cap cover. The blade is partly jeweled and fitted with a locking feather.

Perfect mechanics.

H. 1 ¾ x 1 ½", O.L. 36 ¼"

\$1,200-\$1,800

38. English Naughty Leg Cane

Ca. 1875-Victorian silver plated handle, naturally knobbed black thorn branch shaft and a metal horn ferrule. Life preserver or bludgeon.

H. 3 ½" x 3", O.L. 30 ½"

\$600-\$800

39. Toledo Sword Cane

Ca. 1880-All malacca shaft with crook handle and a metal ferrule. The cane breaks in two parts through a precise and perfectly working quarter turn lock device concealed under the silver collar to release a high graded 27 ½" long foil tempered steel blade with extensive etchings and signed "TOLEDO". This high end cane has the rightly appreciated bare design of the ideal concealed weapon and is surely a connoisseur's first choice.

H. 6" x 5 ½", O.L. 35 ½"

\$1,000-\$1,500

40. Rhino Hide Cane

Ca. 1900-L-shaped silver handle with knobby shoulder and obscured hallmarks, shorter shaft made of a single piece of dried and plain turned rhinoceros hide. Intact and with a beautiful, bright and waxy surface to the shaft. Possibly English. H. 3" x 2", O.L. 29 ¾"

\$700-\$900



37.



38.



39.



40.

41. Rajasthan Dagger Cane

20th Century-All steel silver damascene cane with a substantially modified Derby shaped handle which unscrews to reveal a 5 ½" long blade. The shaft breaks down into two parts for better storage and is fitted with an integral 3 ½" long and pointed redoubtable ferrule. H. 6" x 4", O.L. 37" **\$800-\$1,200**

42. Rabbit Cane

Birmingham hallmarks 1895-Large ivory handle carved with two slumbering rabbits on one side and a third nibbling carrots on the other, well chased silver collar, malacca shaft and a stag horn ferrule. H. 4 ½" x 1 ¾", O.L. 36 ¼" **\$1,000-\$1,500**

43. Sword Cane

Ca. 1870-Fashioned of a straight and naturally knobbed blackthorn branch freed from its bark and fitted with a 16" long diamond shaped steel blade with a concealed and perfectly working push button lock device. H. 6 ¼" x ¾", O.L. 33 ½" **\$500-\$700**

44. Porcelain Dress Cane

Circa 1890-Very large Derby porcelain handle painted in cobalt blue with a different flower arrangement on each side and a butterfly and an insect on the top. The flowers as well as the back of the handle and its neck are highlighted with 24 karat yellow gold lines. Ebony shaft with a turned silver collar and a horn ferrule. Most likely Meissen. H. 5 ¼" x 3", O.L. 37 ¼" **\$1,000-\$1,500**

43.

44.

41.

42.



45. Ivory Cat Cane

Ca. 1900-Well carved ivory humanized cat head knob on a plain and tapering ivory plinth, ebony shaft with a gilt metal collar and brass ferrule. The "Gentleman Cat", with large and colored eyes, bow tie and a red amberoid hat. Excellent condition. H. 3 1/4" x 2", O.L. 35 3/4"
\$1,000-\$1,500

45.

46. Spectacular Ivory Tiger Cane

19th Century.-Large ivory tiger handle, wide and well chased silver collar with Birmingham hallmarks, malacca shaft and a stag horn ferrule. H. 5" x 2", O.L. 37 1/2"
\$1,800-\$2,800

46.

47. Horn Elephants Cane

Ca. 1900-Dark buffalo crook handle carved with two elephant heads against one another and emphasized with inset glass eyes and ivory tusks. Plain silver collar with London hallmarks, ebony shaft and a horn ferrule. H. 4 1/2" x 4", O.L. 36 1/2"
\$900-\$1,200

Provenance: Richard Sawade, wild animal dompteur and circus director

48.

48. Ivory Dog Head

Ca. 1890-Upright ivory dog head with folded ears, well figured short haired fur, inset, tiny glass eyes, turned ivory collar, rosewood shaft and a stag horn ferrule. H. 2 1/2" x 1 3/4", O.L. 37"
\$800-\$1,200





49.

49. Early Dress Cane

Ca. 1830-Heavy silver gilt knob well-modeled, cast and finely hand chased. Engraved "Thorn. Maker 185 Regent St." and comes on a rosewood shaft with a horn ferrule. H. 2" x 1", O.L. 37 1/4" **\$800-\$1,200**



51.

50. Silver Ram Head Cane

Ca. 1930-Substantial and well chased silver ram head with beautiful, large eyes and impressive curving horns. Ebonized shaft with a metal ferrule. H. 3 3/4" x 2", O.L. 36 1/2" **\$600-\$800**

50.



51. Ivory Lizard Cane

Ca. 1925-A carved ivory handle with green eyes, silver snake collar, vine shaft and a metal ferrule. H. 6" x 3", O.L. 35 1/4" **\$500-\$700**



52. Japanese Ivory Animal Cane

Ca. 1890-A carved ivory handle with a bird, a large rat holding the bird, and a frog biting the tail of the rat, all animals have inlaid eyes and are carved in great detail, silver collar and a pair of silver eyelets, exotic wood shaft and no ferrule. H. 4" x 1 1/4", O.L. 37" **\$700-\$800**

52.

53. Ivory Noh Mask Cane

Ca. 1900-A "thousand face" ivory handle which is signed with a two Asian characters, ebony shaft and a metal ferrule. H. 1 ½" x 1 ½", O.L. 36"

\$350-\$450

54. "One Thousand Faces" Ivory Cane

Ca. 1890-A nice rare form in this type of carving with a large face for an end cap, all faces have inlaid eyes, signed with an Asian character, signed sterling ornate collar, pristine bamboo shaft and a metal ferrule.

H. 4" x 1 ½", O.L. 35"

\$800-\$1,000

55. European Ivory Nude Cane

Ca. 1840-A pristine carving of the female form done in great detail, original patina, ornate gold filled collar, malacca shaft and a horn ferrule. Best of the best! H. 3 ½" x 4 ¼", O.L. 36"

\$4,000-\$5,000



53.



56.



57.



58.

**56. Equestrian Ivory Dress Cane**

Dated 1881-A long ivory handle with a large English saddle carved in high relief, carved ivory lanyard, 2" copper collar engraved with a Mass. presentation, bamboo shaft and a metal ferrule. H. 11" x 1", O.L. 38"
\$400-\$600

57. Ivory Hand and Ball Cane

Ca. 1870-A finely carved ivory hand with its original patina, great detailed has been applied by the artist, ebony and ivory ring collars, ebony shaft and a 2 1/2" horn ferrule. H. 6" x 1 3/4", O.L. 34 1/4"
\$1,200-\$1,500

58. Nautical Whalebone Fist Ivory Cane

Ca. 1875-A nicely carved hand and baton with a rope twist collar, whalebone shaft which is hexagonal about 50% and then symmetrical and no ferrule. H. 1 3/4" x 1 1/4", O.L. 36"
\$1,200-\$1,400

59. Tortoise Shell Dress Cane

Ca. 1890-A nice Art Nouveau shell handle, hand chased signed sterling collar, malacca shaft and a metal ferrule. H. 4 1/2" x 1 3/4", O.L. 36 1/2"
\$400-\$600

59.



60. Nautical Rope Cane

Ca. 1875-A sailor made rope exhibition cane with various knots and nautical wraps, woven upon a heavy inner shaft which was probably for defensive purposes and a horn ferrule. Quality. O.L. 35 1/2"
\$800-\$1,200

61. Gutta Percha Dress Cane

Ca. 1890-A complete gutta percha cane, British obscured hallmarks on its coin silver collar and pedestal, and never had a ferrule. H. 2" x 1 1/4", O.L. 36"
\$400-\$500

62. Walrus Ivory Dog Canes

Ca. 1885-A his and hers set, both with two color glass eyes, malacca and bamboo shaft and metal ferrules, largest handle is 5" x 3", shortest length is 33 1/2"
\$450-\$600

63. Masonic Gold Dress Cane

Dated 1872-A presentation gold-filled handle from Masonic Lodge No. 69, ornate high relief panels on the side, small gold-filled collar, ebony shaft and a metal ferrule. H. 1 1/2" x 2 1/4", O.L. 36"
\$350-\$450

64. Ivory Crook Cane

Ca. 1920-A stylized elephant ivory handle, ornate sterling collar, signed S. R. W., malacca shaft and a horn ferrule. H. 4 1/4" x 3 1/4", O.L. 31 1/2"
\$400-\$500

60.



61.



63.



62.



64.





66.

65. Art Nouveau Ivory Cane

Ca. 1890-A carved ivory handle with a cartouche and various leaves, silver metal collar, tiger maple shaft and a metal ferrule. H. 2 1/2" x 1 3/4", O.L. 35"

\$250-\$300



65.

67.

66. Asian Ivory Handle

Ca. 1885-An intricately carved handle with various flowers and leaves, 14kt signed rose gold collar with dents, exotic wood shaft and a horn ferrule. H. 4 1/4" x 1 5/8", O.L. 35"

\$400-\$500



67. Knobkerrie Weapon Cane

Ca. 1925-A silver-plated duck or rare Gooney bird, ebonized shaft and a copper 2 1/2" ferrule. H. 3 1/2" x 3 1/2", O.L. 35"

\$250-\$400



68. Horn and Ivory Bull Dog Cane

Ca. 1910-A carved horn bulldog with gemstone amber eyes and ivory teeth, great detail to this handle, signed sterling collar, ebony shaft and never had a ferrule. H. 2 1/2" x 1 1/2" x 2 1/4", O.L. 36 1/2"

\$500-\$700



68.

69. Ivory Exotic Bird Cane

Ca. 1920-A high relief carving of a unique bird with horn eyes, very detailed carving, ornate gold-filled collar, thick ebony shaft and a metal ferrule. H. 4" x 1 1/2", O.L. 36"

\$700-\$900



69.



71.

70. Bakelite Travel Cane

Ca. 1925-A five piece exotic wood shaft in its original carrying case, bakelite crook handle, small signed sterling collar and a horn ferrule.

H. 4 1/2" x 3 1/2", O.L. 36"

\$300-\$500



70.



71. Sterling Antler Dress Cane

Ca. 1890-A unique sterling casting which contains a small rattle, unique collar signed sterling, ebony shaft and a brass ferrule. H. 5" x 2 3/4", O.L. 35"

\$400-\$500

72. Ivory and Silver Bear Cub Cane

Ca. 1885-A nice elephant ivory handle with three lost was cast silver bear cubs inlaid into the handle, ornate signed sterling collar, blank sterling presentation ring, hardwood shaft and a metal ferrule.

H. 4 1/2" x 1 1/2", O.L. 34 1/2"

\$350-\$500



72.

73. Ivory Flower Child Cane

Ca. 1890-A wonderful ivory carving of a beautiful lady within the petals of a flower, great patina, silver metal collar, ebony shaft and a horn ferrule.

H. 4 3/4" x 1 1/2", O.L. 36"

\$400-\$600



73.

75.

74. Walrus Ivory Dog

Ca. 1840-Carved walrus handle, copper collar, oak shaft and a 3 3/4" brass ferrule. H. 2 1/2" x 1 1/2", O.L. 33 1/2"

\$250-\$400

75. British Buttock Erotic Cane

Ca. 1890-Erotic ivory ball knob handle with delicate carving in incredible miniature detail, malacca shaft and a 2 3/4" long stag horn ferrule, silver collar with Birmingham hallmarks. H. D. 2 1/2", O.L. 38 1/4"

Estimate \$4,000-\$5,000

74.



76. Ivory Erotic Cane

19th Century-Straight fine grained ivory handle with a turned ball top and longer stem engraved with a "heroic love on a horseback" scene, malacca shaft and a worn horn ferrule. The remarkably fresh and vibrant carving is rich in delicate and very fine details which regrettably cannot be well rendered in picture due to the curving surface of the handle. Original condition. H. 4 $\frac{3}{4}$ " x 1 $\frac{1}{2}$ ", O.L. 35 $\frac{3}{4}$ "

\$8,000-\$10,000

77. Folk Art Naughty Leg Cane

Ca. 1880-Boxwood leg with boots emphasized with brass nails and black color, full bark malacca shaft with a silver collar and a metal ferrule. Victorian. H. 5 $\frac{1}{2}$ " x 3 $\frac{1}{4}$ ", O.L. 35 $\frac{3}{4}$ "

\$600-\$800



76.

77.



79.



78. Erotic Folk Art Cane

19th Century-One piece shaved hardwood branch carved with a penis, large brass ferrule. American. OL. 35 1/2"

\$800-\$1,200

79. Tiffany Hard Stone Figural Cane

Ca. 1900-Single piece deep black onyx knob cut in the shape of an upright dog head with an elongated muzzle and long, floppy ears. The handle comes with its wide and plain 18 karat yellow gold collar struck with the hallmarks "TIFFANY & Co M and 18Kt." and the engraved initials "G.H.G." and a well-dressed malacca shaft with a horn ferrule. Better than the best, this cane is a one-of-a-kind work of art where function meets beauty. It is an accomplished example of very desirable and exceedingly rare type of canes, which came into fashion with the impact of Carl Fabergé. Pristine condition. H. 3" x 2", O.L. 36 3/4"

\$8,000-\$10,000

Similar Tiffany figural hard stone knobbed canes see The Pearson Cane Collection by Youssef Kadri Page 119.

78.



80. Tiffany Roosevelt Cane

Ca. 1930-The Tiffany wedding dress cane of the author Elliott Roosevelt and the son of U.S. President Franklin D. and Eleanor Roosevelt. Small ivory knob personalized with his "ER" initials and its slim gold ring stamped "GOLD 18K", ebony shaft and a horn ferrule. Struck with the hallmarks of "TIFFANY & Co MAKERS" on the bottom of the shaft. H. 1" x 1", O.L. 35 3/4"
\$2,000-\$3,000

81. Essex Crystal Dog Head Cane

Ca. 1890-Sleek and stretching Milord shaped rock crystal handle topped by a round Essex Crystal reverse painted intaglio portrait of a dog head, gilt fittings with a Sagittarius emblem on the collar, ebony shaft and a horn ferrule. Austrian noble family heirloom. H. 3 1/4" x 1", O.L. 38"
\$2,000-\$3,000

80.

81.





82. Spectacular Ivory Native American Indian Cane
 Ca. 1880-Substantial ivory knob carved with a Chief head wearing his parade feather head dress. The portrait respects the traditional Red Indian iconography and sport a multitude of fine details and feathers, starting on top of the heads and cascading the wearer's necks. Lignum vitae wood shaft with a flush set ivory washer and a 5 1/4" tall ivory ferrule. H. 3 3/4" x 2 3/4", O.L. 38"

\$6,000-\$8,000

Provenance: Richard Sawade, wild animal dompteur and circus director.

82.



83.

83. Ivory Elephant Parade Cane

Ca. 1880-Substantial ivory knob carved in fine and naturalistic detail as a full bodied elephant balancing on a ball with four joint stocky legs. The bulk animal is amazingly adapted to the form of the handle and comes on an ebony shaft embellished with extensive ivory dot inlay and fitted with a 4" long stag horn ferrule. H. 3 ¾" x 3", O.L. 39 ½"
\$4,000-\$5,000



84.



84. Jeweled Rock Crystal Cane

Ca. 1900-L-shaped rock crystal handle delicately engraved with a flowering twig, hammered silver collar with four faceted rubies on each side, rosewood shaft and a horn ferrule. French quality in the high end taste of Cazal, Paris. 3" x 2 ¼", O.L. 36 ¾"
\$1,000-\$1,500

85.



86.



85. Ivory Revival Cane

Ca. 1890-Straight ivory handle carved in the Middle Age style with two portraits against one another. The young girl and young man are rendered in high relief and painstaking fine detail and framed by very rich and elaborate decorative elements. The handle, possibly symbolizing marriage, comes on an ebony shaft with a stag horn ferrule. French. H. 3 1/4" x 1 1/4", O.L. 38 1/4"
\$1,200-\$1,800

86. Ivory Memento Mori Cane

Ca. 1860-Straight handle with a human skull on three longer femur bones, malacca shaft with a metal collar and an ivory ferrule. H. 5 3/4" x 1 3/4", O.L. 33 3/4"
\$1,500-\$2,000

87.



88.



87. Snake Wood Wild Animal Cane

Ca. 1910-Large and imposing well spotted snake wood prone wild animal, possibly a lioness, twin belts sterling silver collar with Birmingham hallmarks, ebony shaft and a horn ferrule. Wild life art at its best. H. 4" x 2 1/4", O.L. 36 1/2"
\$1,000-\$1,500

88. Ivory Skull Cane

Ca. 1880-Ivory human skull on a plinth with ivy, silver collar with Birmingham hallmarks, ebony shaft and a horn ferrule. H. 2 1/2" x 1 3/4", O.L. 38"
\$1,000-\$1,400

89. Memento Mori Skulls Cane

Ca. 1900-Straight stag horn handle carved with human skulls piled over another, a symbolic reminder of the inevitability of death, malacca shaft with a plain white metal collar and iron ferrule. H. 4 ½" x 1 ¼", O.L. 35 ¾"

\$800-\$1,200

90. Ivory Horse and Dog Cane

Ca. 1890-Substantial ivory handle with a horse against a dog head. High end carving and with a halter for the horse and a belted collar for the dog. Stepped malacca shaft with a white metal ferrule and a well chased silver collar struck with a "STERLING" hallmark. Expertly secured crack to the handle's collar. H. 6" x 2 ¼", O.L. 36"

\$2,000-\$3,000

91. Meissen Porcelain Cane

Ca. 1900-Straight white porcelain handle decorated in cobalt blue with the classic, "Zwiebelmuster" onion pattern, ebony shaft with a metal collar and an ivory ferrule. This German handle is authenticated with the two crossed swords of the famous porcelain manufacture. H 3" x ½", O.L. 37 ¼"

\$500-\$700

89.



90.



91.



92. Ivory Tiger Cane

London Hallmarks 1890-
Well carved ivory tiger head,
malacca shaft and a considerably
decorated silver collar engraved
"PRESENTED TO Mr Dawson
BY THE SCONE PARISH CHURCH
SABBATH SCHOLARS NOVr 1893". A
wide open muzzle and sharp teeth as
well as long whiskers accent the wild
character of the animal and reflect its
innate vital force. London hallmarks
1890. H. 4 ¼" x 2 ¼", O.L. 36 ½"
\$1,500-\$2,000

92.



94.



93. Ivory French Bulldog Cane

Ca. 1880-Vertical handle
fashioned of the tip of an
ivory tusk and engraved with
the head of a French Bulldog,
ebony shaft with a finely
chased silver collar and a stag
horn ferrule. H. 4 ¾" x 1 ¾",
O.L. 40 ½"
\$1,200-\$1,800

94. Ivory Dog Head Cane

19th Century-Sizeable dog
portrait carved in ivory,
malacca shaft and an ivory
ferrule. Outstanding quality.
H. 3 ½" x 2 ½", O.L. 37 ¼"
\$1,500-\$2,500

95.



93.



95. Figural Ivory Day Cane

Ca. 1920-Ivory handle
fashioned of a single piece
in a basic Opera shape on
a rosewood shaft with a
stag horn ferrule and silver
collar with obscured London
hallmarks. Superb. H. 4 ¾" x 1
¾", O.L. 36 ½"
\$1,000-\$1,500

96. Meissen Porcelain Dress Cane

Early 1900s-Porcelain knob decorated in cobalt blue with the classic "Zwiebelmuster" which literally translates onion pattern, dark rosewood shaft with a slim metal collar and a horn ferrule. Typical for the famous porcelain manufacture Meissen and in mint condition. H 1 ½" x 1 ¼", O.L. 37"
\$500-\$700

97. Ivory Pierrot Cane

19th Century-Ivory handle fashioned of the tip of an elephant tusk and much of that mythic quality of the clown adheres to this very portrait with a compelling smile, frilled collar and oversized, outlandish conical bonnet. Malacca shaft with a plain silver collar with obscured London hallmarks and a stag horn ferrule. Quality cane, very fine carving and superb patina. H. 6 ¾" x 1 ¾", O.L. 36 ¾"
\$1,500-\$2,000

97.



98.

96.



98. Ivory and Wood Pierrot Cane

Ca. 1890-Sizeable ivory and burr wood head with an ivory frill collar and hat and colored highlights on the face, rosewood shaft with a flush set ivory collar and ivory ferrule. Possibly French and very decorative. H. 3 ½" x 2", O.L. 36 ½"
\$1,000-\$1,500

99.



99. Anglo-Colonial Cane

19th Century-Huge hardwood knob carved to depict the head of a wise man with laughing face, well knobbed Congo wood shaft with a metal collar and ferrule. H. 5 ½" x 3 ½", O.L. 37 ¾"
\$800-\$1,200

102.



100. Ivory Turf Cane

19th Century-Vertical ivory handle with two horse heads, rosewood shaft and a brass ferrule. First rate. H. 4 1/2" x 2", O.L. 35"
\$900-\$1,200

100.



101. Viennese Dress Cane

Ca. 1910-Substantial hard stone knob which seems to be a boulder opal in an elongated, plain and fluting shape with a round top, gilt collar, a rosewood shaft and a horn ferrule. H 3" x 1 1/4", O.L. 39 1/4"
\$600-\$800

102. Turf Day Cane

Ca. 1870-Siam horn handle carved as a horse leg with ivory hoof and gilt nails, chased white metal collar, malacca shaft and a stag horn ferrule. H. 4 1/2" x 1 1/2", O.L. 38"
\$500-\$700

103. Ivory Donkey Cane

Ca. 1890-Substantial ivory handle carved to depict a donkey's head, twin ring silver collar, malacca shaft and a horn ferrule. This walking stick is reputed to be based on Queen Victoria's favorite donkey Jocko. H. 3 1/2" x 3 1/4", O.L. 36 1/2"
\$1,000-\$1,500

103.

104. Prone Ivory Lion Cane

19th Century-Large L-shaped ivory handle carved with a prone lion, honey toned real malacca shaft with a turned ivory collar and horn ferrule. H. 4 1/4" x 1 3/4", O.L. 34"
\$900-\$1,200

101.



104.



105. Ivory Cupid Cane

Ca. 1880-Straight figural ivory handle depicting Cupid the god of desire, erotic love, attraction and affection. Ebony shaft and a metal ferrule. H. 3 ½" x 1", O.L. 38 ½"

\$800-\$1,200

106. Red Coral Dress Cane

Ca. 1850-Delicate Mediterranean skeletonized red coral twig carved with two acorns, ebony shaft with an 18 karat gold collar and metal ferrule. Rarely encountered, high end and precious Italian jewelry cane from Torre Del Greco or Trapani. Intact. H. 2" x 2", O.L. 37"

\$800-\$1,000

107. Ivory Otto von Bismark Cane

Ca. 1900-Very large ivory Bismark head knob on a substantial corky oak shaft and a metal ferrule. German memorabilia collectable cane which expresses a political statement. The previous owner deliberates that the choice of this shaft with a dark, nucleous, mineral-like structured appearance is in connection with the pseudonym "Iron" Chancellor of the German Empire who unified the German states. H. 3 ½" x 2 ¾", O.L. 37 ¾"

\$1,000-1,500

108. Ivory Black Man Cane

Ca. 1870-Character carving of a Black Man head with inset glass eyes in rarely encountered "Ivoire Teinté" (Stained ivory), makassar ebony shaft with a metal collar and a metal ferrule. H. 2 ½" x 2", O.L. 35 ¼"

\$1,200-\$1,800

105.



107.



106.



108.



110.

109.



111.



112.



109. Hard Stone Dress Cane

Ca. 1900-Straight pale jade bowenite knob with elaborate Louis XVI gilt mounts on a dark and fine grained rosewood shaft with a horn ferrule and applied "CS" initials. French. H. 2 ¾" x 1", O.L. 39 ½"

\$700-\$900

110. Ivory Hippo Head

London hallmarks 1889-Warm toned malacca shaft with a horn ferrule. Intense patina. H. 2 1/2" x 2 1/2", O.L. 37"

\$1,500-\$2,000

Provenance: Richard Sawade, wild animal dompteur and circus director.

111. Dog Day Cane

Ca. 1900-Boxwood dog head with long floppy ears and longer muzzle flaked by a pair of straight forward looking eyes, plain silver collar, flamed lemonwood shaft and a horn ferrule. This cane has all the charm and radiation a collector's soul loves and is praised by age and long and careful use. H. 2 ½" x 2", O.L. 36 ¼"

\$600-\$800

112. Ivory Day Cane

Ca. 1870-Ivory L-shaped handle fashioned in two pieces fit at an angle with the joining line concealed under a belt with buckle and carved at the front with the head of a whippet. The dog head is rendered in very high relief in the mannered style of the Italian Renaissance. malacca shaft with a white metal collar. H. 3 ¾" x 3 ½", O.L. 35 ½"

\$700-\$900

113. Automated Dog Cane

Ca. 1900-Fruitwood handle naturalistically carved in the shape of a Airedale's head with two inset glass eyes. The lower jaw is hinged and can be articulated with the lever under the chin. Once depressed, the dog opens his mouth to show a red tongue framed by a row of sharp teeth. If the lever is suddenly dropped, it produces a penetrating noise, resembling the barking of a canine. H. 3 ½" x 2 ½", O.L. 37 ¼" **\$800-\$1,000**



114. Ivory Dog Head Cane

London hallmarks 1894- Long eared ivory dog head with a glove in its mouth, integral belted collar and inset glass, eyes, malacca shaft, glass eyes and a finely chased silver collar. H. 2 ½" x 2 ¼", O.L. 36" **\$1,000-\$1,500**



115. Coquilla Nut Frog Cane

Ca. 1890-Coquille nut L-shaped handle carved in high relief with a frog peering at a fly, ebonized hardwood shaft with a coiled metal snake collar and a metal ferrule. H. 3" x 1 ½", O.L. 34 ¼" **\$600-\$800**



116. Ivory Turtles Cane
19th Century-Ivory knob carved with a large turtle and four turtle babies, malacca shaft and missing ferrule. Rarely encountered theme with superior, fine and naturalistic detail. H. 2" x 32 ¾", O.L. 34 ½" **\$1,000-\$1,600**





118.



117.

117. Snake Wood Wild Animal Cane

Ca. 1910-Large and imposing well spotted snake wood prone wild animal, possibly a lioness, twin belts sterling silver collar with Birmingham hallmarks, ebony shaft and a horn ferrule. H. 4" x 2 1/4", O.L. 36 1/2"

\$1,000-\$1,200

118. Porcelain Dress Cane

Ca. 1890-Milord porcelain knob centered with a ring of roses and leaf within rich and raised gold scrolls, ebony shaft with a metal collar and stag horn ferrule. Classy German cane, possibly KPM Berlin. H. 2 1/2" x 1 1/4", O.L. 37 1/4"

\$400-\$600

119. Ivory Dog Cane

19th Century-Larger Boxer head with upright ears, extending lower jaw, large nose with open nostrils and prominent, inset, dark glass eyes. Ebony shaft with two gilt ring collars and a metal ferrule. French. H. 2 1/4" x 3 1/4", O.L. 37"

\$1,000-\$1,500

120. Dog Head Cane

Ca. 1900-Very large fruit wood handle carved as a French Bulldog head with upright ears, flat muzzle and inset glass eyes, malacca shaft with a bound leather collar-loop and tassel and a stag horn ferrule. Viennese. H. 4 1/4" x 2 1/2", O.L. 35 1/2"

\$600-\$800



119.



120.

121. Countryside Day Cane

Early 20th Century-Stag horn handle finely carved with a dove, glass eyes, well figured rosewood shaft with a silver ring collar and a horn ferrule. H. 5 ¼" x 3", O.L. 36 ½"
\$600-\$800

122. Ivory Rats Cane

Ca. 1890-T-shaped Opera ivory handle carved in deep relief with rats, oak leaves and acorns. While the panels are different on each side, the rodents are naturalistically rendered with pointed snouts, long tails and the amusing bat ears. Furthermore, they are enlivened by inset glass eyes. Cocobolo shaft with a gilt silver collar with hallmarks and a horn ferrule. H. 4 ½" x 1 ¾", O.L. 36 ¼"
\$1,000-\$1,500

123. Silver Day Cane

Ca. 1900-Well-proportioned Opera shaped silver handle modeled and finely chased in high relief with a feudal horseback rider and his dog on one side the dog chasing a fox on the other. An ebony shaft, German hallmarked rim and a horn ferrule. H. 4 ½" x 2 ½", O.L. 36 ¾"
\$600-\$800

124. Figural Day Cane

Ca. 1920-Boxwood hippopotamus head on an ebony shaft with a metal collar and ferrule. The artist took his art to a great advantage with a pleasing cartooned approach to the amphibious animal and its joyous flair and signed his handle with engraved "MS" initials on the back of the head. H. 3 ½" x 2", O.L. 37"
\$600-\$800

122.



121.



124.



123.





125.

125. Silver Mascot Cane

Ca. 1890-Sizeable silver knob chased and engraved in high relief and very fine detail with an encircling dragon on the side and a round shield with traditional Fu calligraphy inscriptions conveying wishes of good luck and long life on the top. Rosewood shaft. H. 3 1/4" x 1 1/4", O.L. 36 1/4"

\$400-\$600



126.

126. Ivory Noh Masks Cane

Ca. 1890-Japanese export ivory knob with 20 Noh Masks, ebony shaft and a brass ferrule. H. 1 1/2" x 1 1/4", O.L. 36 1/2"

\$700-\$900

127.



128.

127. Ivory Chrysanthemums Cane

Ca. 1890-Long and straight ivory handle carved in low relief with a flower composition dominated by large chrysanthemum buds and irises, ebony shaft and an ivory ferrule. H. 8 1/2" x 3/4", O.L. 39"

\$700-\$900

128. Owl Cane

Ca. 1900-Straight handle modeled to depict an owl perched on two books, mahogany shaft and a metal ferrule. Be it silver or silver plated, this cane is certainly a very decorative statement piece. H. 3 1/4" x 1", O.L. 39 1/4"

\$600-\$800

129. Wild Life Ivory Cane

Ca. 1890-Ivory knob carved with a stag and a deer, plain silver collar, rosewood shaft and a horn ferrule. The gracious animals are rendered against a mountainous landscape and emphasized with inset glass eyes. H. 3" x 1 1/2", O.L. 35 3/4"

\$700-\$900

129.

**130. Eagle Head Day Cane**

Ca. 1900-Rosewood eagle head handle with a fine feather coat, strong curving beak and two inset glass eyes. Ebony shaft with a replaced metal ferrule and a plain silver collar with English hallmarks. H. 3 3/4" x 2 3/4", O.L. 36 1/2"

\$600-\$800

130.

**131. Ivory Turf Cane**

19th Century-Stretching urn shaped ivory handle with a horse head in a horse shoe within two beaded friezes, matching silver collar with obscured London hallmarks, dark rosewood shaft and a stag horn ferrule. H. 4 1/2" x 1 1/4", O.L. 36 3/4"

\$800-\$1,000

133.

**132. Silver Day Cane**

Ca. 1900-Large silver crook handle with a horse head at the front, ebony shaft and a metal ferrule. German 800 hallmark. H. 5" x 4 1/2", O.L. 37"

\$600-\$800



132.

133. Duck Head Day Cane

Ca. 1920-A well carved and naturalistically colored boxwood duck head with inset glass eyes, pear wood shaft, gilt metal collar and a metal ferrule. H. 4 1/4" x 2 1/2", O.L. 36"

\$400-\$500



134.



134. Ivory and Ebony Eagle Head Cane

Ca. 1900—Large ebony eagle head handle with ivory beak and stretching neck collar, ebony shaft and a horn ferrule. A finely engraved feather coat and a pair of inset glass eyes. H. 3 ¾" x 3 ¼", O.L. 36 ¼"
\$700-\$900

135. Ivory Dress Cane

Ca. 1870—Long and straight turned ivory handle carved in high relief and extreme precision with a flower composition. Ebony shaft and a horn ferrule. Best French quality from the legendary workshops of Dieppe. H. 10 ½" x ½", O.L. 40 ½"
\$800-\$1,000

135.



136.

137.



136. Folk Art Cane

Ca. 1900—Fashioned of a well-dressed wild cherry branch with a large bulb knob carved to depict a character head with bonnet. The expressive face and its well-drawn features radiate charisma and inherent individuality and pay tribute to the maker's technical skill. H. 3" x 2 ¾", O.L. 34 ¼"
\$700-\$1,000

137. Silver Dress Cane

Ca. 1890—Sizeable silver knob hand chased and engraved with beautiful scrolls within multiple framing bordures, ebony shaft and a horn ferrule. High end Anglo-Indian Kutch cane. H. 3 ½" x 1 ¼", O.L. 36"
\$500-\$700

138. Sandal Wood Cane

20th Century-All sandal wood cane with an angular elephant head handle and a segmented shaft intricate carved with various animals. Burmese light weighted and very decorative traditional cane and with a rubber ferrule. H. 5 ½" x 1 ½", O.L. 36 ¾"

\$300-\$400

138.



139. All Ivory Cane

Ca. 1870-All ivory segmented cane with a plain Opera shaped handle and a shaft made of 13 identical segments in an octagonal configuration and integral, turned collars. High end Anglo-Indian cane with an intense age patina. Expertly secured length cracks on two segments. H. 3 ¾" x 1", O.L. 35 ¼"

\$800-\$1,200

139.

140. Dog Head Day Cane

Ca. 1920-Fruitwood dog head knob with a pointed snout, upright ears, a well figured hairy coat and inset glass eyes, rosewood shaft and a metal ferrule. Viennese. H. 3 ¼" x 2 ½", O.L. 36 ¾"

\$400-\$500



140.

141. Ivory Dress Cane

Ca. 1890-Impressive ivory straight handle with fire gilt knob and collar, ebony shaft and an ivory ferrule. Engraved on its collar "Hamburg Brahmsallee 97." H. 12 ¼" x 1 ¾", O.L. 36 ½"

\$800-\$1,000

141.





143.

142. Ivory Dog Head Cane

Ca. 1900-Well carved greyhound head in a beautifully stylized L-shape and longer muzzle with strong teeth and a pair of inset glass eyes. Dark rosewood shaft with a stag horn ferrule, silver collar engraved "GLATZL". Austro-Hungarian hallmarks. H. 4" x 1 1/4", O.L. 37 3/4"

\$800-\$1,000

143. Fine Ivory Dog Cane

Ca. 1900- A pair of ivory dogs with sterling muzzles, glass eyes, the silverwork is very detailed, signed sterling collar, stepped partridge wood shaft and a metal ferrule. H. 5" x 2" O.L. 36"

\$2,000-\$3,000

144. Ivory Racehorse Cane

Ca. 1900- The finest ivory race horse cane we have offered, four ivory horses with sterling bridles, two color glass eyes, high relief carvings on both sides, lost wax raised horse signed sterling color, twig spur cherry shaft and a metal ferrule. The Best! H. 4 1/2" x 2", O. L. 36"

\$3,500-\$4,500



144.

142.



145. Dog Day Cane

Late 19th Century-Hardwood dog head with long floppy ears and longer muzzle flaked by a pair of straight forward looking dark glass eyes, gilt collar, rosewood shaft and a horn ferrule. H. 2 ½" x 3", O.L. 37" **\$400-\$600**

146. Kris Day Cane

Ca. 1900-Stag horn Kris handle mounted on a rosewood shaft with a stag horn ferrule and a plain silver collar with Birmingham hallmarks. H. 3 ½" x 1 ½", O.L. 38 ½" **\$400-\$600**

147. Ivory Fist Cane

Ca. 1870-Upright right hand with a long cylindrical cuff holding what seems to be a folded scroll, dark rosewood shaft and a stag horn ferrule. So-far unrecorded fist motif and with the charm of a well-used surface. Most likely a Free Mason cane and probably English. H. 4" x 3 ¾", O.L. 37 ½" **\$700-\$900**

148. Ivory Dress Dual Purpose Cane

Circa 1870-Ivory knob delicately carved with a crown over a longer stem with an allegory of music in the shape of a lyra against a blank cartouche within two wreaths of laurel and oak leaves and an integral collar with a dot ring. Rosewood shaft and a stag horn ferrule. French. H. 2 ¾" x ¾", O.L. 36 ½" **\$700-\$900**

145.



147.



146.



148.





149.

151.



149. Silver Dress Cane
Ca. 1890-Silver Derby handle hand chased and engraved with Baroque scrolls, ebony shaft and a horn ferrule. German hallmarks. H. 4 ¾" x 3", O.L. 37"
\$500-\$600

150. Exotic Bird Day Cane
Circa 1900-Figural handle fashioned of ivory and lizard skin and embellished with glass eyes, malacca shaft with an ivory ferrule. H. 3 x 2 ¼", O.L. 34 ½"
\$700-\$900

151. Porcelain Dress Cane
Ca. 1880-Porcelain handle of a modified Opera shape modeled in a streamlined profile with a gentle twist and painted with scattered blooms and gold highlights. Wild vine shaft with a plain silver gilt collar and a metal ferrule. Possibly KPM Berlin. H. 3" x 1 ¼" x 33 ½"
\$500-\$700



149.

153.



152. Toledo Dress Cane
Spain, circa 1885-A remarkable Toledo steel knob with dense 24 karat yellow gold and silver wire Damascene work with arabesque and trellises within multiple frames, ebony shaft and a horn ferrule. Speaks for the Zoluagas workshop from Eibar. H. 1" x 1", O.L. 37"
\$400-\$500

153. Ivory Monkey Cane
English, 19th Century-Squatting ivory monkey naturalistically carved with fine detail on a well-dressed malacca shaft with an ivory ferrule. Attractive large size and well-aged. H. 4" x 1 ¾", O.L. 37"
\$900-\$1,200



150.

154. Hard Stone Dress Cane

Ca. 1920-Sizeable tiger eye knob of a shimmering golden color fashioned in an elongated, plain and tapering Milord shape, rosewood shaft with a horn ferrule and a plain silver collar with Birmingham hallmarks. H. 3" x 1 1/4", O.L. 37 1/2"

\$400-\$600

155. Maori Cane

Ca. 1890-Fashioned of a hardwood branch freed from its bark with a natural bough as knob and entirely carved with various patterns. This very rarely encountered cane epitomizes the traditional New Zeland Maori culture. H. 3" x 1 1/2", O.L. 38 1/2"

\$800-\$1,200

156. Art Nouveau Lady Dress Cane

Ca. 1900-Straight silver handle with a large loop chased sinuous leaf and berries, ebony shaft and a brass ferule. French or Belgian. H. 4 3/4" x 2 1/4", O.L. 38 1/4"

\$300-\$400

157. Figural Ivory Cane

Ca. 1900-Ivory knob carved to depict a "Singing Donkey", rosewood shaft and a stag horn ferrule. H. 1 3/4" x 1 1/4", O.L. 33 1/2"

\$400-\$600

158. Three Enamel Canes

20th Century-A panda and a heron head in a warm toned amber colored enamel respectively on a fruitwood shaft with a metal ferrule and an ebonized shaft with a horn ferrule and what seems to be an erotic motif with hearts in green and red enamel on a rosewood shaft with a horn ferrule. Some damage. H. 2 3/4" x 2", O.L. 37 1/4", 3 1/2" x 2", O.L. 37 3/4", 3 3/3" x 2 1/4", O.L. 35 1/2"

The three \$400-\$500

155.



154.



156.



157.



158.



160.



159. Art Nouveau Dress Cane

Ca. 1890-A large crook handle hand chased with two identical wine leaves and grapes panel and engraved with the initials "BO" on its set at an angle and flat nose. German 800 hallmarks and an obscured maker's mark and comes on a coco palm wood shaft with a metal ferrule. H. 4 $\frac{3}{4}$ " x 4 $\frac{1}{4}$ ", O.L. 32 $\frac{1}{2}$ "
\$400-\$500

160. Dieppe Ivory Badine

19th Century-Long ivory handle delicately carved in high relief with, what seems to be, an allegory of the summer. French and comes on a rosewood shaft with an ivory ferrule. H. 5 $\frac{3}{4}$ " x 1 $\frac{1}{2}$ ", O.L. 36 $\frac{1}{2}$ "
\$600-\$800

161. Art Nouveau Dress Cane

Dated 1914-1915-Larger and well-proportioned silver Derby handle hand chased with poppy flowers and engraved "Kriegsjahr 1914-1915" (War year 1914-1915) on the side and "LD" initials on the back, rosewood shaft and a horn ferrule. German hallmarks. H. 4 $\frac{1}{2}$ " x 2 $\frac{1}{2}$ ", O.L. 37 $\frac{1}{2}$ "
\$500-\$600

159.



162. Revival Ivory Cane

Ca. 1910-Ivory Pharaoh bust on a longer knobbed stem with ebony dot inlay on an ebony shaft with a horn ferrule. Anglo-Egyptian cane from the Revival period. H. 6 $\frac{3}{4}$ " x 1 $\frac{1}{4}$ ", O.L. 37 $\frac{1}{4}$ "
\$700-\$900

162.



161.

163. Figural Bronze Day Cane

20th Century-Well modeled Henry VIII bronze head knob, wild cherry branch shaft with a metal collar and ferrule. Commemorating the celebrated British monarch. H. 2" x 1 1/2", O.L. 36 1/2" **\$300-\$500**



163.

164. Art Deco Dress Cane

Ca. 1895-Carved ebony handle with two full nudes on a large ivory plinth collar, ebony shaft and a 2 1/4" ivory ferrule. Directly linked to the rich and distinctive heritage of the Wiener Werkstätte, this cane is a singular and precious object that happily reminds us what Viennese Art Deco was capable of producing. H. 3 1/2" x 1 1/2", O.L. 38 1/4" **\$400-\$600**



166.



165. Monkey Day Cane

20th Century-Hard wood knob carved a Monkey head, Plain silver collar with Birmingham hallmarks, rosewood shaft and a horn ferrule. Very decorative and stylized carved with the cane wearer's comfort in mind. H. 2 1/2" x 2 1/2", O.L. 36 1/4" **\$400-\$600**

165.



164.



166. Silver Dog Head Cane

Ca. 1920-Naturalistically modeled and deeply chased silver dog head with long hair, ebony shaft and a brass ferrule. H. 3" x 2 1/2", O.L. 36" **\$500-\$700**

167. Whimsical Frog Cane

Ca. 1920-Rosewood handle carved as a Lady frog with cape and crossed hands, large green glass eyes, rosewood shaft, silver collar and a horn ferrule. H. 4" x 2 1/4", O.L. 37 1/4" **\$400-\$500**

167.





168.

168. Ivory Dress Cane

19th Century-L-shaped ivory handle ornate with an integral pair of tassels hanging against a shell, ebony shaft and a horn ferrule. German. H.4 $\frac{3}{4}$ " x 3 $\frac{1}{4}$ ", O.L. 33 $\frac{3}{4}$ " \$400-\$600



170.

169. Boxwood Whippet Cane

Ca. 1920-Stylized carved boxwood whippet head handle with long floppy ears and inset glass eyes, silver triple ring collar, ebony shaft and a metal ferrule. Great whimsical flair and monogrammed "MS". H. 3 $\frac{3}{4}$ " x 2 $\frac{1}{4}$ ", O.L. 36 $\frac{1}{2}$ " \$400-\$600

170. Knobkerrie Day Cane

Ca. 1900-Stylish bronze heron's head, golden ash branch shaft. Distinguished by a strong profile this cane is also a redoubtable disguised life preserver weapon. H. 3 $\frac{3}{4}$ " x 2", O.L. 38" \$400-\$500

171. Grouse Countryside Cane

20th Century-Striking and large boxwood grouse head handle with glass eyes, golden ash branch shaft with a gilt metal collar and a metal ferrule. H. 3" x 2", O.L. 35 $\frac{3}{4}$ " \$300-\$400

172. Knobkerrie Ivory Day Cane

Ca. 1900-L-shaped ivory handle carved as a stylized bird's head, polished beech wood shaft with a metal ferrule. O.L. 37 $\frac{1}{2}$ " \$300-\$400



169.



171.



172.

173. Bone Dress Cane

Ca. 1880-A two piece bone handle with brass tacks, ornate brass collar, thick malacca shaft and a brass ferrule-H. 3 1/2" x 5", O.L. 34 1/2"

\$200-\$250

174. Dog Head Container Cane

Ca. 1920-Unscrewing cast bronze dog head knob, mahogany shaft with a metal collar and ferrule. H. 3 1/2" x 2", O.L. 37"

\$300-\$400

175. Ivory Twig Cane

Ca. 1890-An ivory handle carved in the shape of a pair of twigs, ornate gold filled collar, ebony shaft and a metal ferrule. H. 5" x 1 3/4", O.L. 36"

\$400-\$500

176. Silver Dress Cane

Ca. 1930-An Alpaca silver-plated horse cane with two color glass eyes, ebony shaft and a metal ferrule. H. 4 1/2" x 5", O.L. 38"

\$250-\$350

177. Ivory Lion Cane

20th Century-A unique carved ivory handle with two color glass eyes, silver collar with elephants, malacca shaft and a horn ferrule. H. 5" x 3 1/4", O.L. 37"

\$1,500-\$2,000

175.



173.



174.



177.



176.





179.

178. Ivory Knob Cane

Ca. 1880-An ivory knob with nice patina, exotic wood shaft and a 4" horn ferrule. H. 2 1/2" x 1 1/2", O.L. 35 1/2"

\$300-\$400

179. Ivory Elephant Cane

Ca. 1930-A carved African elephant ivory handle upon a signed sterling platform, exotic wood shaft and a 2 1/2" ivory ferrule. H. 4" x 3", O.L. 36"

\$1,300-\$1,500

180. Ivory Eve and Serpent Nude Cane

Ca. 1930-A wonderful carved nude Eve setting on a pedestal with an ivory snake, signed sterling collar, honey malacca shaft and a horn ferrule. H. 4" x 1 3/4", O.L. 35 1/2"

\$2,000-\$3,000

181. Ivory Student's Cane

Ca. 1875-A high relief carved handle, copper collar, half bark malacca shaft and a stag horn ferrule. H. 3" x 5 1/2", O.L. 37 1/2"

\$500-\$600



180.



178.



181.

182. Wood Turk's Knot Cane

Ca. 1885-A one piece carved exotic wood shaft with complete spiraling and a metal ferrule. O.L. 35"
\$450-\$500



182.

183. Hound Dog Country Cane

Ca. 1880-A carved dog's head with two color glass eyes, horn ears and collar, natural vine shaft and a pike ferrule. H. 6 1/2" x 4", O.L. 34 1/2"
\$450-\$600



183.

184. Dartmouth Indian Cane

Early 20th Century-A nice example of this genre of canes, hardwood shaft with various names carved and a horn ferrule. H. 4" x 2 1/4", O.L. 36"
\$250-\$350



184.

185. Ivory Punch Cane

20th Century-A whimsical carved ivory handle of punch, two color glass eyes, sterling signed beaded collar, malacca shaft and a 2 1/2" horn ferrule. H. 3 1/4" x 1 3/4", O.L. 35 3/4"
\$1,200-\$1,500



185.

186. Art Deco Dance Cane

Ca. 1925-An ivory top oval, 14kt small gold collar, ebonized shaft inscribed "Jim J. Cobb", and a horn ferrule. H. 1 1/4" x 5/8", O.L. 35 1/2"
\$200-\$300



186.



187.



188.

187. Horn Dress Cane

Ca. 1910-A classic carved horn handle, hallmarked gold collar with dents and dings, ebonized shaft and a metal ferrule. H. 4 ¼" x 4", O.L. 34 ¼"

\$300-\$400

188. Baleen Dress Cane

Ca. 1900-A one piece carved crook handle baleen cane and no ferrule. H. 4 ½" x 4", O.L. 35 ½"

\$8,000-\$10,000

189. Silver Dress Cane

Ca. 1840-An unmarked coin silver swirl handle, malacca shaft and a 2 ¾" brass ferrule. H. 1 ¼" x 1 ½", O.L. 35 ¾"

\$250-\$400



189.



190.

190. Horn Sword Cane

Ca. 1875-A push button 15" 4-sided locking blade, horn handle with remnants of tortoise shell on the bottom of the hoof, American cherry shaft and a metal ferrule. H. 4" x 5 ½", O.L. 36"

\$800-\$1,200

191. Bulldog Dress Cane

Ca. 1920-A Black Forest carved dog with silver ears and eyebrows, two color glass eyes, silver metal collar, bamboo shaft and a metal ferrule. H. 2" x 2 ½", O.L. 39"

\$500-\$700



191.

192. Stag Sword Cane

20th Century-A massive carved stag handle, ornate silver collar with pushbutton mechanism, 13" Wilkinson style blade, faux bamboo ebony shaft and a stag ferrule. H. 2 ½" x 5", O.L. 36"
\$1,000-\$1,200

193. Ivory Dolphin Cane

20th Century-A whimsical ivory dolphin upon a wave, two color glass eyes, signed 14kt gold collar, exotic wood shaft and a horn ferrule. H. 2 ½" x 3", O.L. 37"
\$800-\$1,000

194. Ebony Nude Cane

20th Century-A massive carved Art Nouveau style nude, signed sterling collar, thick malacca shaft and a 1 ¾" ivory ferrule. H. 7 ½" x 2", O.L. 36"
\$800-\$1,000

195. Japanese Stag Cane

Ca. 1900-A carved stag handle with two turtles and twig spurs, signed sterling collar, exotic wood shaft and a horn ferrule. H. 6 ½" x 1 ½", O.L. 36"
\$400-\$500



192.

193.

195.

194.



196.



197.

196. Highly Carved Ivory Dress Cane
Ca. 1890-A unique deep carved ivory handle, ivory band collar, exotic wood shaft and an ivory ferrule.
H. 1 3/4" x 5 1/4", O.L. 36"
\$800-\$1,200

197. Walnut Fan Style Cane Stand
20th Century-An American walnut stand for 12 canes in fine condition.
35" x 27" x 5"
\$500-\$1,000

198. Golden Oak Cane Display Case
An original finish case with stepped bottom, with spaces for 49 canes, lift top on casters. 24" x 24" x 51"
\$1,000-\$1,500



198.

199. Retractable Fan Cane
Ca. 1880-A nice example of a retractable, near mint fan cane in working order, coin silver top, large ivory collar, bamboo shaft, original pull cord and a metal ferrule.
H. 1 1/2" x 1 1/2", O.L. 33 3/4"
\$800-\$1,200



199.

200. Three Compartment System Canes
Two empty and one with a torch
\$250-\$300



200.

201.



201. Ivory Sword Cane

Ca. 1900-An ivory carved bird handle with a 33" ornate eagle engraved blade, locking brass mechanism, massive mahogany faux bamboo shaft and a carved tree branch ivory ferrule.
H. 3 3/4" x 1 1/4", O.L. 37"
\$1,000-\$1,500



204.



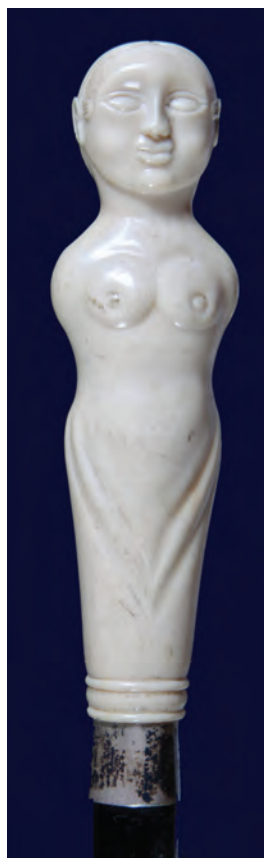
202. Ivory Eagle Dress Cane

Ca. 1885-A handsome carved ivory eagle with two 12 star flags, ornate gold-filled collar, malacca shaft and a 2" horn ferrule.
H. 4" x 5", O.L. 35"
\$500-\$700

203.

203. Nude Ivory Dress Cane

Ca. 1900-A primitive ivory carving of an erotic nude, signed sterling collar, ebonized shaft and a metal ferrule. H. 5 1/2" x 1 1/2", O.L. 38"
\$500-\$700



204. Bear Stag Cane

20th Century-A detailed modern carving of three bears in stag, mahogany shaft and a stag ferrule.
H. 3 1/2' x 4", O.L. 36"
\$300-\$500



202.



205.

205. Ivory Alligator Cane

Ca. 1920-A snapping ivory full length gator, silver color, exotic wood shaft, and an ivory ferrule. H. 3 1/2" x 1", O.L. 35"
\$600-\$900



206. Wedgewood Style Jasper Cane

Ca. 1880-A very unusual jasper handle in high relief which is intact, silver colors, mahogany shaft, and a metal ferrule. H. 1 1/4" x 3", O.L.- 36"
\$500-\$700

207. Ivory Spaniel Dress Cane

Ca. 1900- A large ivory carving with two color glass eyes, high relief, thick silver ring collar, exotic wood shaft and a metal ferrule. H. 3 1/2" x 1 1/2", O.L. 36"
\$1,200-\$1,500

208. Canes and Walking Sticks by Kurt Stein

Nice condition
\$100-\$200

209. Ivory Going Ashore Cane

Ca. 1880- A carved whales tooth handle, rich snakewood shaft and a horn ferrule. H. 1 1/4" x 1 1/2", O.L. 36"
\$400-\$500



208.



209.

210. Large Ivory Bulldog Cane
 Ca. 1890-Ivory bulldog with two color glass eyes, signed sterling stepped collar, malacca shaft, and a horn ferrule. H. 2 ¼" x 2", O.L. 36"
\$1,200-\$1,500

211. Large Ivory Bulldog Cane
 Ca. 1920-A finely carved ivory handle, ornate British hallmarked collar, thick malacca shaft, and a metal ferrule.
 H. 2" x 2 ¼" x 1 ¾", O.L. 36"
\$1,000-\$1,500

212. Horn Dress Cane
 Ca. 1875-A well worked horn handle, ornate copper collar, stepped bamboo shaft and a horn ferrule. H. 4 ¼" x 3", O.L. 35"
\$250-\$400

210.



212.



213.



213. Stag Dog Cane
 Ca. 1890-A carved dog, stepped malacca shaft and a brass ferrule. H. 4" x 3 ½", O.L. 34 ½"
\$250-\$400

214. Alligator Cane
 Ca. 1920-A nice piece of orange wood with an alligator carved on the shaft and a brass ferrule. O.L. 36"
\$200-\$300

214.



211.





215.

215. Hiking Cane

Ca. 1930-A goat horn and hoof with silver mounts, hardwood shaft and a pike ferrule. H. 3" x 7", O.L. 35 1/2"
\$200-\$300

216. Asian Ivory Frog Cane

Ca. 1930-A finely carved Asian handle with beaded eyes, silver end cap, ornate ivory collar, chip carved twisted shaft and a metal ferrule. H. 6" x 1 1/2", O.L. 36"
\$800-\$1,200



216.

217. Horn Country Cane

Ca. 1875-A stylized horn handle with a German silver mount, natural grown shaft and a stopper ferrule. H. 5" x 1 3/4", O.L. 36 1/2"
\$100-\$200

218. Pair of Massive Stag Canes

\$150-\$300

219. Carved Skull Cane

Ca. 1950-An exotic carved skull cane, exotic wood and a metal ferrule. H. 4" x 4" x 2 1/2", O.L. 36"
\$200-\$300



217.



218.



219.

220. Gold Dress Cane

Dated 1926-A large gold-filled presentation from St. Patricks of PA., dent atop the handle, ornate gold filled work, signed K & M, 1" thick mahogany shaft and a metal ferrule.

H. 1 ¾" x 2", O.L. 36"

\$200-\$300

220.



221. Russian Skull Cane

Dated 1944-"Tenth Air Force" engraved silver-plated handle, exotic wood shaft and a horn ferrule.

H. 2 ½" x 3", O.L. 36"

\$200-\$400



221.

222. Ivory Dress Cane

Ca. 1900-Original patina, silver metal collar ebonized shaft and a stopper ferrule.

H. 5" x 2 ½", O.L. 34 ½"

\$200-\$300

223. Art Deco Dress Cane

Ca. 1925-A one piece crook handle with a one piece signed sterling end cap, exotic wood and a stopper ferrule.

H. 4 ½" x 3", O.L. 31"

\$100-\$125



222.



223.

Photography by James Price

Catalog Design by KT Design, LLC
www.kristaft.com

© Copyright 2013 Kimball M. Sterling, Inc.

www.AuctionAuction.com



Kimball Sterling (age 5)