



Kimball M. Sterling, Inc.
Presents

Winters Cane Auction



SATURDAY
FEBRUARY 6TH, 2010

www.auctionauction.com



Kimball M. Sterling, Inc.
Presents

Winters Cane Auction

SATURDAY
FEBRUARY 6TH, 2010
11:00 A.M. EST - CATALOG SALE

Preview

Friday, February 5th - 12:00 p.m. - 5:00 p.m. E.S.T.

Saturday, February 6th - 9:00 A.M. E.S.T.

or by appointment anytime before the auction

**Auctions will be carried live on the internet at
LIVEAUCTIONEERS.COM**



Kimball M. Sterling Auction Gallery
125 West Market Street Johnson City, Tennessee 37601
kimballsterling @ earthlink.net
423.928.1471

Member National Auctioneers Association

www.auctionauction.com

TERMS & CONDITIONS

1. Cash, check, MasterCard, or Visa. A 15% buyers' premium will be added to the hammer price as part of the sale price for in-house, phone, and absentee bidders. We reserved the right to hold purchases until the buyers checks clears if buyer is not known by us. Bank letter of credit is acceptable. A 20% buyers fee will be charged to internet bidders.

2. Mail or phone bids are accepted; the firm may require a deposit.

3. Kimball M. Sterling, Inc. has endeavored to catalog and describe the property correctly. All property is sold as is and neither the auction company nor the consignor will be responsible for descriptions, genuineness, provenance or condition of the property. No statement in the catalog made orally at the sale or otherwise shall be deemed to be a warranty, representation, or an assumption of liability.

4. In the event of any dispute between bidders, the auctioneer shall have total discretion to determine the successful bidder, in which his determination shall be final or to re-offer and resale the article in dispute. Title of the item or items purchased by the bidder will pass at the fall of the gavel and declaration of bidder. This is not an approval auction. All measurements are approximate.

5. Principal auctioneer: Kimball M. Sterling #2467.
B. Elizabeth Sterling, auctioneer # 5757. Firm Kimball M Sterling Inc. TFL-1915

6. Bidders may bid live on the Internet by visiting <http://www.auctionauction.com> You may also view the auction at this site and bid by phone.

7. Communications:
Telephone 423-928-1471.
Fax 423-928-2816.
Cellular 423-773-4073, 423-773-4072.
Email kimballsterling@earthlink.net

8. Worldwide shipping available. International sales which are protected by C.I.T.E.S. permits can also be arranged. Estimated bidders cost per cane is \$255.00 for permits and inspections plus the shipping cost. A permit may also be required by your country. Our packing service is free but the buyer must pay postage and insurance fees.

9. Kimball M. Sterling, Inc. will not be held responsible for bids not received in time for the auction or slow Internet bids. We will not be responsible for items left on our location for over 30 days.

10. Sale will be conducted at 125 West Market Street, Johnson City, Tennessee. 37604. Announcements day of the sale take precedence over pre-sale advertising. Any litigation that pertains to this auction will be conducted in the county of Washington in Tennessee and is agreed upon by registering for this auction.

11. Airport is the Tri-Cities Airport, which is approximately 20 miles from the gallery. Internet catalog and live bidding available at www.auctionauction.com Best Western Hotel: 423-282-2126. A very fine hotel which offers Sterling Auction a discount rate is the Carnegie Hotel 1216 W State of Franklin Rd, (423) 979-6400.

12. Please call for condition report on sale lots or email us. We do send out multiple photos by email of any lot in the auction. By registering for this auction you accept the terms and give Kimball M. Sterling auctions the right to charge your credit card on file for purchases and shipping, which you have entered on your registration.

13. Parking service is free.





2.



1.



3.



4.



5.

1. Ivory Dress

Late 18th Century-A nice original Malacca shaft with brass eyelets, patinated handle and a 3 1/4" original brass ferrule-H. 3" x 1", O.L. 37 1/4"
\$300-\$500

2. Walnut Folk Art Cane

Dated 1875-A folk presentation to Jens Nislen with formal German script on a 6 panel upper shaft, expertly carved rope twist on the balance of the shaft and carving of two hands joined in friendship. Small gouge on bottom of shaft-O.L. 37 1/2"
\$400-\$600

3. Carved Folk Art

Late 19th Century-Elaborately chip carved, floral etched, and mostly basket woven designs, shaft also has a raised book and a cartouche with the initials V.W., brass bullet ferrule-O.L. 34 1/2"
\$200-\$350

4. Gorham Silver Dress

Late 19th Century-A Gorham hallmarked hexagonal handle, stepped partridge wood shaft, and a horn ferrule-H. 1 1/2" x 1", O.L. 35 1/2"
\$250-\$350

5. Tree of Life Silver Dress

Art Nouveau-Sterling handle, Malacca shaft and a bi-metal ferrule, (small dent in handle)-H. 4" x 2", O.L. 35"
\$300-\$400

6. Nautical Ivory Fist

Circa 1875-A very substantial handle carved by a master's hand, snake body has scales-tongue and eyes. A small section of the snake appears to have been replaced years ago. The shaft is a very heavy and rich mahogany and it has a metal ferrule-H. $3\frac{1}{4} \times 1\frac{3}{4}$, O.L. 36"
\$700-\$1,200



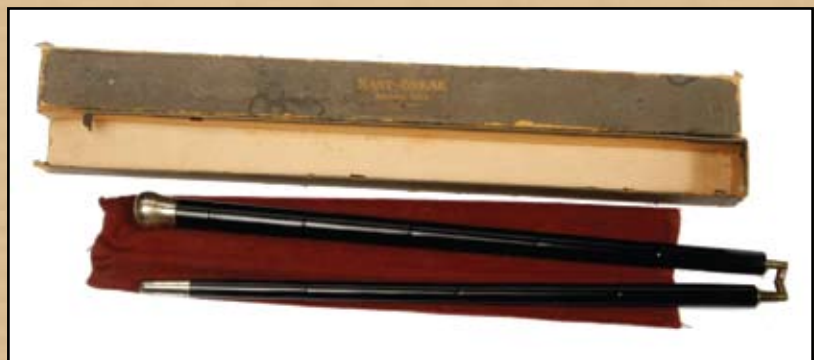
7. Silver Dress Crook

Circa 1885-A hand engraved handle with flowers and foliage, Malacca shaft and a two piece ferrule which has a signature of Isaac Smith-H. $3\frac{1}{2} \times 2\frac{1}{2}$, O.L. $34\frac{1}{2}$
\$300-\$500



8. Sterling Folding Cane

Early 20th Century-A "Kant-Break" folding cane in its original, worn box, the shaft is faux bamboo and is in two pieces which are joined by a chain link. It has its original felt cloth and original ferrule. One might call this a mint cane in a not so mint box-H. $1\frac{1}{8} \times 1$, O.L. 34"
\$400-\$600





10.



11.



10. Ornate Ivory Dress

Mid 19th Century-A large carved ivory handle with scenes of a young man's passages to manhood, rich Malacca shaft, ivory eyelets and strap accessories and a 2" horn ferrule-H. 2 3/4" x 1 1/2", O.L. 39" \$700-\$1,200

11. Sword Cane

Late 18th Century-Coin silver handle and eyelets, a nice 13" triangular blade with engraving, bluing and gilt. It is a very nice original sword with a 6" brass ferrule-H. 1" x 1", O.L. 33 1/4" \$500-\$1,000

12. Ivory Dress

Dated 1837-This cane once belonging to T. R. Bakewell identified by name on the silver collar and by initials on a gold medallion atop the ivory handle; there is Latin verse on the second collar near the silver eyelets, stepped cherry wood shaft and a 4" iron ferrule-H. 2" x 1 1/2", O.L. 35 1/2" \$600-\$1,200



12.

13. Tortoise and Ivory Dress

Late 19th Century-A nice turned handle with a tortoiseshell roundel on top, thin silver collar, Malacca shaft and a horn ferrule-H. 1 ¾" x 1 ¾", O.L. 35"
\$400-\$600



13.



14.

14. Eagle Folk Art

Circa 1865-A nicely carved stylized eagle folk art cane, probably Civil War, one piece hickory wood shaft and a 2" iron ferrule-O.L. 33"
\$200-\$400

15. Horn Sword Cane

Circa 1770-A two tier Malacca shaft, 12 ½" blued and etched blade, horn handle with mother of pearl inlaid, silver eyelets and collars, and a 4 ½" brass ferrule-H. 1 ½" x 1 ½", O.L. 35"
\$500-\$800



15.



17.

16. Telescope System Stick

Early 19th Century-A one-draw telescope which is the upper section of an early machined shaft which is covered in leather, a nickel silver handle and eyelets, missing original ferrule and it has some leather loss throughout-O.L. 31 ½"
\$600-\$1,200



17. Nautical Ivory Dress

Circa 1865-A massive ivory handle with rich patina, a small baleen insert atop the handle, exotic wood shaft, and a 2 ½" ivory ferrule-H. 4" x 1 ½", O.L. 36 ½"
\$500-\$1,000



16.



18.



19.



18. Samurai Sword Cane

Late 19th Century-An unusual cane with brass fittings, hand made 12" blade with blood grooves, exotic wood shaft and a brass ferrule-H. 5" x 1", O.L. 32"
\$400-\$600

19. Indiana Folk Art

Early 20th Century-The cane has a basket weave pattern carved throughout the shaft, state seal of Indiana, a Heron and the name J. P. Weckesser, small metal ferrule-O.L. 34 1/2"
\$200-\$300

20. Ivory Skull and Snake Dress

Late 19th Century-A carved ivory handle, silver bamboo collar, two silver spacers, exotic wood shaft and a bi-metal ferrule-H. 1" x 1", O.L. 35"
\$300-\$500



20.



21.

21. Tiffany Sterling Dress

Circa 1900-Signed Tiffany handle on original threading shaft with branch nodes, nice rich original patina and a brass ferrule-H. 1 1/4" x 1 1/4", O.L. 36"
\$400-\$700

22. Silver Ivory Dress

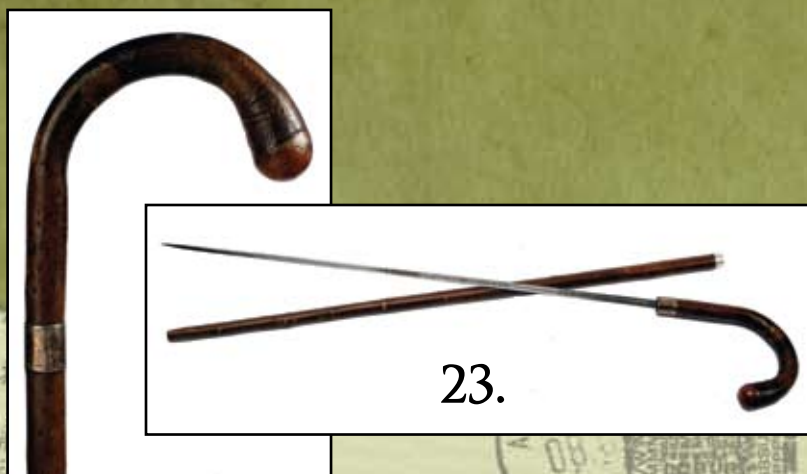
Art Nouveau-Styled handle with silver end cap and engraved beaded sterling collar, exotic wood shaft and a bi-metal ferrule-H. 4 1/2" x 1 1/4", O.L. 35"
\$300-\$500



22.

23. Wilkinson Sword Cane

Circa 1890-A 27 ½" acid etched
Pall Mall blade with blood groove
in fine condition, hallmarked silver
collar, burl and exotic wood shaft
and a horn ferrule-O.L. 37"
\$500-\$700



23.

24. Shipmate's Stingray Cane

Circa 1850-The prime example of
this type of cane that we have seen.
The shaft and the barb are in very
fine condition. The handle and
the three hand etched collars are
made of bell bronze which could
have been silver plated at one time
early in its life. The deadly barb is
still attached to the tail with its
saw toothed edges. It has a brass
ferrule-H. 1 ¾" x 1 ½", O.L. 35 ¾"
\$1,000-\$1,500



24.

26.

25. Shark Vertebrae Cane

Early 20th Century-An unusual
bird head with a tooth for a beak
which is signed with Oriental
characters, a signature of W.
B. Silver, Cleveland, Ohio and
numbered and a metal ferrule-H. 3
¾" x 2 ½", O.L. 35 ½"
\$300-\$500



25.

26. Stag Country Cane

Circa 1830-A nice countryside
cane with no collar, Malacca shaft,
brass eyelets and a 2 ½" brass
ferrule-O.L. 36 ¾"
\$200-\$350





27.



28.



29.



30.



27. Boar's Tusk

Civil War Trophy

Circa 1885-The tusk is inscribed to "Adams B. Zabdiel Surg 7th Mass." One would think that Adams was a surgeon in this regiment, woven silver wire collar, natural twig spur shaft and no ferrule-H. 6" x 5", O.L. 36 1/2"
\$600-\$1,000

28. Stag and Silver Dress

Circa 1790-A stepped Malacca cane with a silver medallion inlaid on the top of the stag handle, 3 silver collars of which one is inscribed J. Sisco to J. Armstrong, one remaining silver eyelet and a 3" brass ferrule-H. 2 1/4" x 1 1/2", O.L. 33 3/4"
\$300-\$400

29. Nautical Sailor's Knott Cane

Circa 1875-A very nice example of this type of work with very minimal damage, entire handle and shaft is covered by various macramé knots and it has a bimetal ferrule-O.L. 36"
\$800-\$1,200

30. Historical Whitehouse Cane

Circa 1950-Attached to the pine shaft is a bronze plaque which states "Original Whitehouse material removed in 1950", also has the presidential seal, two carved eyelets and a metal ferrule-O.L. 34"
\$200-\$300

31. Historical Battle Cane

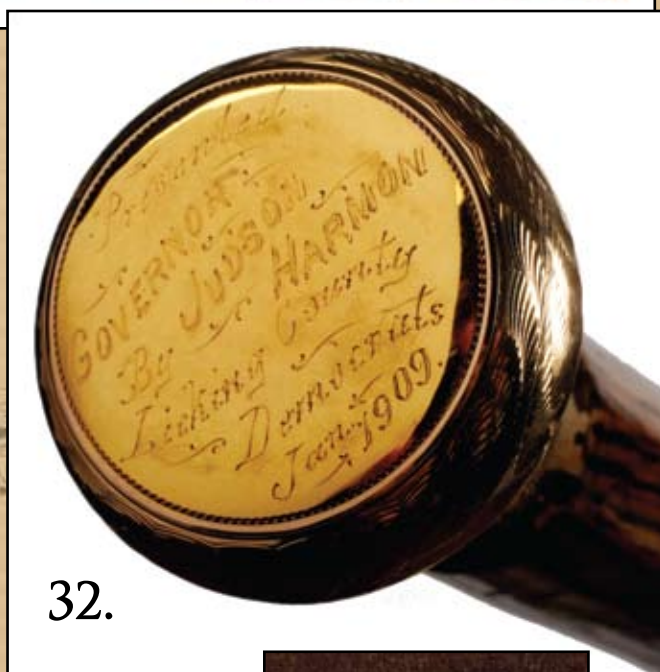
Dated 1898-A heavy basket woven silver handle, inscribed silver collar "O. B. C. 1898 San Juan Hill Cuba", rich snakewood shaft and a bi-metal ferrule-H. 1 ¼" x 1", O.L. 35 ¾"
\$500-\$1,000



31.

32. Ohio Political Cane

Circa 1909-Marked 14kt Gold Presentation top, inscribed to Ohio Governor Judson Harmon, from Licking County Democrats, Jan. 1909 on handle. Handsome machine engravings surrounding the 1 ¾" x 1 ½" wide flawless knob handle, which sits atop a probably symbolic hickory shaft. Has 3" bimetal ferrule, cane comes in its original hinged storage box of wood, which has cloth lining and a campaign button inside depicting Governor Harmon. Cane length is 37 ½"; box length is 39 ½"
\$800-\$1,500



32.

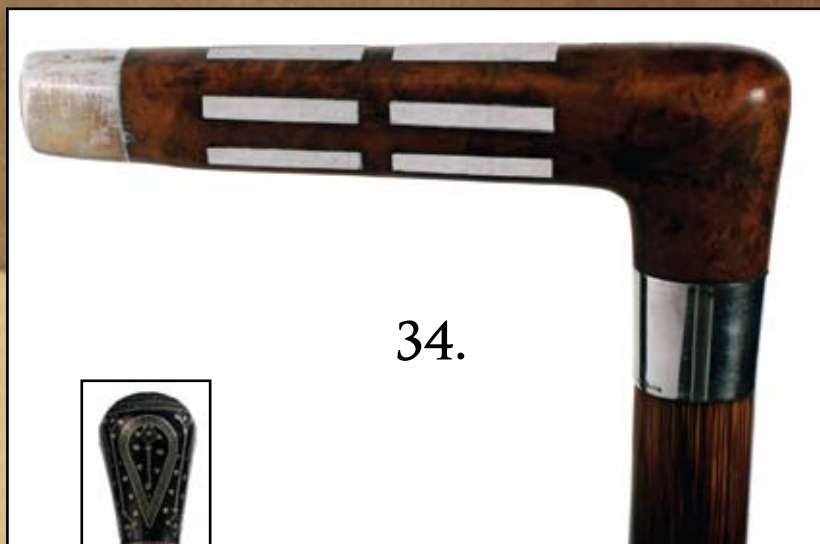
33. Ivory and Gold Dress

Late 18th Century-A nicely carved ivory handle with a 1781 coin inserted in its top, gold collar, a pair of gold eyelets, a gold shaft and a 4 ½" bi-metal ferrule-H. 1 ¾" x 2 ¼", O.L. 38"
\$400-\$600



33.





34.

34. Tiffany & Co. Dress

Art Deco-A beautiful burl and silver inlaid stylized handle, signed Tiffany Silver Collar, stepped exotic wood shaft and a bi-metal ferrule-H. 4 ½" x 1 ¼", O.L. 34 ¼"
\$500-\$1,000



35.

35. Russian Pique Dress

Circa 1880-Hundreds of inlaid pieces of nickel silver, no ferrule and some minor damage to the pique work-O.L. 35"
\$300-\$500

36. Arts & Crafts Cane

Early 20th Century-An unusual hammered handle with applied fish and fly, cane is marked sterling, RFS & Co., rich bamboo shaft done in the Japanese style and a horn ferrule-H. 3 ½" x 1 ½", O.L. 30 ¼"
\$250-\$350

37. Tiffany Silver Antler Dress

Circa 1925-A well formed silver antler handle, a large dotted silver collar signed Tiffany, natural branch shaft and a metal ferrule-H. 3 ½" x 2 ¾", O.L. 34 ¼"
\$500-\$1,000



36.



37.

38. Ivory Fist

Circa 1880-A nicely carved fist holding a document with a spiraled ivory cuff, fluted silver collar, rich rosewood shaft and a horn ferrule-H. 2" x 1 3/4", O.L. 35 3/4"
\$500-\$700



39. Ivory Pique

Circa 1695-A nice original pique handle, pique circle eyelets, scalloped coin silver collar, original Malacca shaft and an 8" brass ferrule. The date and the initials are not visible atop the cane but maybe the mystery of the handle is that it once belonged to a foreign royal family due to the tulip motif-H. 4" x 1 1/2", O.L. 35 1/2"
\$2,500-\$4,000



38.

39.

40. Ivory Ball Dress

Circa 1890-A 2" ivory ball with original patina, beaded and ringed metal collar, faux bamboo carved hardwood shaft and a 2" bi-metal ferrule-O.L. 34"
\$300-\$400



40.

41. Historical Nautical Cane

Early 19th Century-A scrimshawed ivory handle with the name "Hass, Newton, Mass". A silver collar engraved with the words "U.S. Frigate Constitution," original coin silver eyelets and a bi-metal ferrule-H. 2" x 1 1/2", O.L. 32 1/2"
\$800-\$1,200



41.

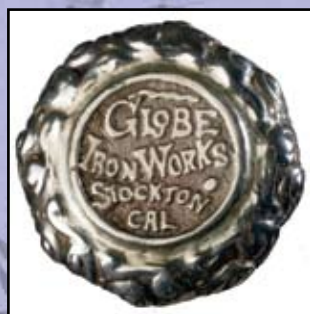




42.



43.



44.



45.

42. Wolfers Freres Silver Dress
Late 19th Century-A hallmarked Belgium Freres handle with applied and entwining foliage, scrolled silver collar, Malacca shaft and a brass ferrule-H. 4 ½" x 3 ½", O.L. 35 ¼"
\$400-\$600

43. Moses Babcock Gun Cane
Late 19th Century-This early percussion rifle cane has most of the original Babcock stamping visible, an example of this can be seen on page 355 Dike's Cane's of the United States, has a curved brass handle, blackened iron shaft and a wooden ferrule which is probably a replacement, mechanism cocks and fires-H. 5" x 3, O.L. 31"
\$800-\$1,200

44. Stockton Iron Works
Late 19th Century-Cast into the top of the handle is Globe Iron Works, Stockton, Cal. His company is known for supplying many regional mining operations, handle is signed sterling, exotic wood shaft and a metal ferrule-H. 1 ½" x 1 ½", O.L. 36"
\$300-\$500

45. Georg Jensen Silver Dress
Circa 1900-A typical Jensen leaf applied to the top of the signed handle, sectioned bamboo shaft and a brass ferrule-H. 1 ¾" x 5/8", O.L. 33 ¼"
\$400-\$600

46. Nautical Whalebone Cane

Circa 1870-Nicely turned handle, small baleen spacer, $\frac{3}{4}$ " whalebone shaft and no ferrule-H. 3" x 1 $\frac{1}{2}$ ", O.L. 37"

\$1,500-\$2,500

47. Whalebone Nautical Cane

Mid 19th Century-A large carved whalebone handle with a sea monster which has a protruding tongue and carved teeth, 2 $\frac{1}{2}$ " carved baleen collar and a metal ferrule-H. 5 $\frac{1}{2}$ " x 1 $\frac{1}{4}$ ", O.L. 35 $\frac{1}{2}$ "

\$2,500-\$3,500

48. Massive Carved Ivory

Circa 1900-A quality carved and toned dog head with two color glass eyes, hallmarked silver collar, massive honey Malacca shaft and a bi-metal ferrule-H. 3 $\frac{1}{2}$ " x 2" x 1 $\frac{3}{4}$ "-O.L. 34"

\$1,000-\$1,500



47.



48.



46.



49.



50.



51.

49. Ivory and Wood

Lucifer Cane

Circa 1925-A finely carved handle with ivory face-ears-end cap, rich Malacca shaft and a metal ferrule-H. 2" x 2" ½", O.L. 34 ½"

\$800-\$1,200

50. French Porcelain Dress

Circa 1870-A painted pommel handle with gold and flower decoration, large Malacca shaft, horn ferrule-H. 1 ½" x 1 ¾", O.L. 37 ½"

\$300-\$500

51. Tabilo System Stick

Circa 1900-A very unusual musical system stick which comes with its original brass horn, resonator, and bow. The one piece system stick is marked cello, viola, violin on the right side of the flat keyboard. A capo is fitted to the shaft but slides from top to bottom to change the sound production to match those three instruments. The cane is also marked Tobila, D R G M and has a metal ferrule. The cane is in working condition-Bow 19", horn 11" x 7", O.L. 36"

\$1,500-\$2,500

52. European Folk Art

Circa 1925-A carved one piece cane with a snake with two color glass eyes and no ferrule-O.L. 36"
\$200-\$300

53. Art Nouveau Dress

Circa 1895-A silver plated handle with three large fish swimming through bottom grass exotic wood shaft and a metal ferrule-H. 3 ½" x 1 ¾", O.L. 36"
\$200-\$400

54. Ivory Lion

Dated 1900-A nicely carved ivory lion with two color glass eyes, ornate gold-filled collar with a friendly presentation, dated 1900, ebony shaft and a horn ferrule-H. 2" x 1 ¾", O.L. 36 ½"
\$400-\$500

55. Ivory Dragon Dress

Circa 1890-A carved dragon with two color glass eyes, fierce teeth, silver collar, rosewood shaft and a horn ferrule-H. 4 ¼" x 3", O.L. 36"
\$500-\$700

56. Ivory Camel

Early 20th Century-A realistic carved head with two color glass eyes, hallmarked British collar signed T.D., exotic hardwood shaft and a horn ferrule-H. 3 ½" x 2 ½", O.L. 36"
\$500-\$1,000



53.



52.



54.



55.



56.

57.



57. Ivory Statesman

Circa 1880-A carved ivory gentleman in wig, an ornate hallmarked British collar, exotic wood shaft and a metal ferrule-H. 1 ½" x 2", O.L. 36"
\$250-\$450



58. Ivory Musician

Circa 1894-A massive carved handle done in great detail, an ornate silver collar dated 1894 with British hallmarks with the maker's initials being H.C.K., massive Malacca shaft and a brass ferrule-H. 3 ½" x 3" x 1 ½", O.L. 35"
\$800-\$1,200



58.

59. Les Collections Canes

by Sergio Coradeschi and Maurizio De Paoli-Mint condition book with original jacket
\$250-\$300

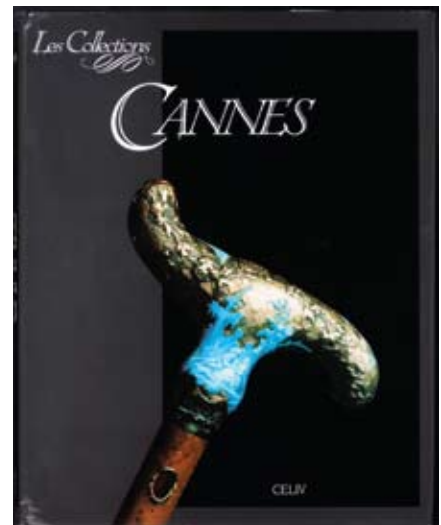
60. Tortoiseshell and Silver Dress

Circa 1885-Signed sterling and bright cut handle, tortoiseshell shaft with minor separations and a bi-metal ferrule-H. 4" x 3", O.L. 34"
\$1,200-\$1,500

59.



60.



61. Stag with Sterling Overlay

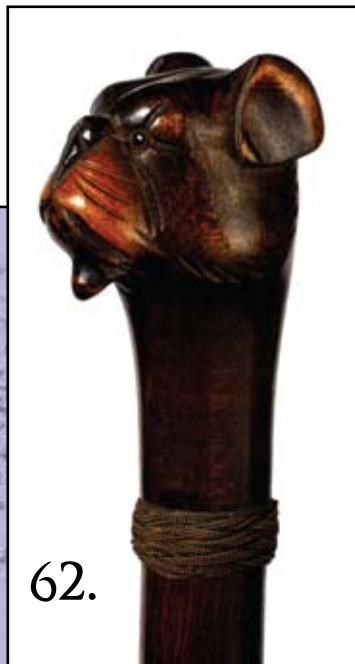
Art Nouveau-A signed heavy sterling handle with a well patented antler, large silver collar, Malacca shaft and a bi-metal ferrule-H. 5" x 2 ½", O.L. 36"
\$400-\$500



61.

62. Dog Glove Holder

Late 19th Century-A very well carved dog with two color glass eyes, push button lower lip, woven copper collar, natural grown shaft and a 6" brass ferrule-H. 3" x 1 ¾", O.L. 35"
\$300-\$500



62.

63. Ivory Knob

Circa 1885-Carved ivory handle with good graining, coin silver collar, thick Malacca shaft and a metal ferrule-H. 1 ½" x 3", O.L. 34 ½"
\$300-\$400



63.

64. Ivory Skull

Early 20th Century-A carved ivory skull with 1 rose gold tooth, ornate silver collar with elephants marching, rich snakewood shaft and a horn ferrule-H. 2" x 2", O.L. 37"
\$600-\$900



64.

65.



65. Massive Ivory Zodiac

Early 20th Century-A Chinese carved 2 ¾" ivory ball with various animals, signed sterling collar, ebony shaft and a horn ferrule-O.L. 36"
\$1,000-\$1,200

67.



66. Masonic Ivory Dress

Circa 1880-A large ivory handle, silver collar with a Masonic compass engraved, lanyard holes, exotic wood shaft and a bi-metal ferrule-H. 1 ¾" x 2", O.L. 34"
\$300-\$500

67. Ivory Lobster Claw

Dated 1908-An extreme ivory carving, silver collar with the following presentation "To H. E. Chapman from Hocking Valley Friends, Columbus Ohio 1908", exotic wood shaft and a horn ferrule-H. 4" x 2", O.L. 36"
\$1,200-\$1,800

68. Ivory Horse Head

Circa 1885-A carved ivory race horse with glass eyes, ornate sterling collar, honey Malacca shaft and a metal ferrule-H. 4" x 1 ½", O.L. 35"
\$1,000-\$1,200

68.



66.



69. Ivory Skull and Snake

Circa 20th Century-An expertly carved ivory handle with multiple skulls and a snake entwined which is signed L.B., rich snakewood shaft and a 3" ivory ferrule-H. 4" x 1 5/8", O.L. 36"
\$1,200-\$1,500



69.

70. Ivory Wolf Pack

Circa 2005-A custom ivory and silver cane from the workshop of Charles Daugherty. Three ornately carved wolves, large ornate signed sterling handle extension with a beautiful cast wolf and a collar with various wolves walking around the entire cane. True ebony shaft and a bi-metal ferrule-H. 6" x 3", O.L. 37"
\$800-\$1,200



70.

71. Harmonica Cane

Early 20th Century-A nice original harmonica cane with a mother of pearl disc inlaid in the top, original patina, working fine, brass ferrule-O.L. 34 1/4"
\$400-\$600



71.

72. Buggy Whip Cane

Patented 1892-An original two piece cane made by the patent Canewhip Company, Springfield Ohio, original leather covering with most of its original dying, ornate silver-plate handle and a brass spiral ferrule. When the handle is attached to the whip, it has a total length of 6 feet.-H. 1 3/4" x 7/8", O.L. 36"
\$1,300-\$1,500



72.



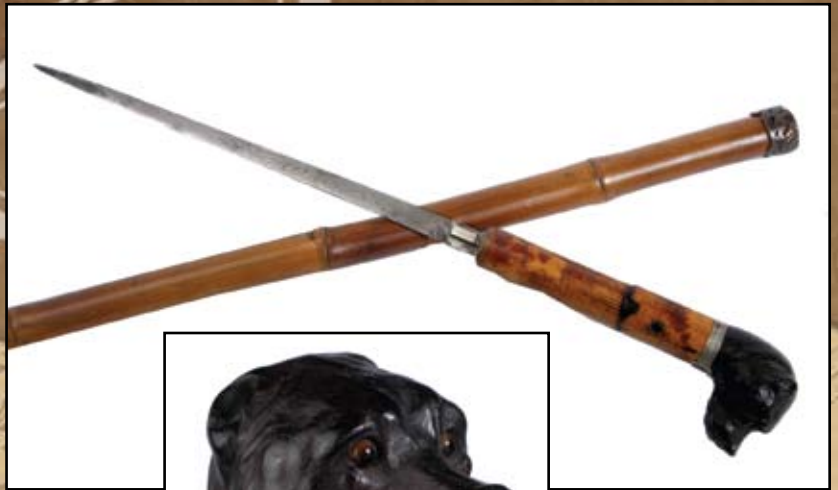
73. Tom Thumb Presentation

Dated 1872-This cane was recently purchased out of a home in the Northeast and is fresh to the International cane market. The ornate silver collar has the following presentation, "Presented to Nate Salsbury by Tom Thumb 1872". Mr Salsbury was an early entertainer and circus promoter along with P. T. Barnum. Later in life he teamed up as the general manager with Buffalo Bill for the Wild West Show and ended up owning the Buffalo Bill Show. The realistic ivory boxing glove appears to have been copied closely by a pair of miniature boxing gloves which were purchased out of the same house. The shaft is a very rich dark Malacca and it has a brass ferrule. Gloves will accompany this lot.-H. 3" x 2" x 1 1/2", O.L. 3 3/4" \$15,000-\$18,000



74. Dog Sword Cane

Circa 1880-Finely carved burl dog head with two color glass eyes, coin silver collar, one eyelet, 9 ½" fancy blade with locking mechanism to bamboo shaft, handmade copper collar and brass ferrule-H. 2 ¼" x 1 ½", O.L. 38"
\$1,200-\$1,400



75. Ivory Lobster Claw

Dated 1892-Carved ivory claw done in detail that we have not seen before, ornate signed sterling collar, hardwood shaft and a horn ferrule-H. 4" x 1 ½", O.L. 34"
\$2,500-\$3,000



74.

76. Silver Sword Cane

Late 19th Century-Continental hallmarked silver handle and collar, 26" blade with blood groove, cherry shaft and a metal ferrule-H. 1 ½" x 2", O.L. 36"
\$1,000-\$1,200



75.

76.





77.

77. Hands On Ivory Sword

Circa 1875-A very unusual ivory sword cane with a push button mechanism on its ornate sterling collar, 12" triangular blade, hardwood shaft and a metal ferrule-H. 5" x 2 1/4", O.L. 34" \$1,300-\$1,500



78. Buffalo Bill's Wild West Show Presentation

Dated 1891-The handle has the inscription "Wallace R. Stemsen-Buffalo Bill's Wild West-1891" and a few other unreadable numbers, handle has been damaged over the years but historically it has been enhanced. It has an original Malacca shaft and a bi-metal ferrule-H. 1 1/4" x 1 3/4", O.L. 33 1/2" \$7,000-\$9,000



78.

79. Nautical Captain's Cane

Dated 1868-A carved ivory handle with a baleen spacer with inlaid ivory baleen and tortoiseshell. The coin silver collar is inscribed "Captain J. O. Norton 1868". He was the captain of the whaling ship "Ionia" from New Bedford from 1861 to 1871. It has a maple shaft and a copper ferrule.-H. 1 $\frac{3}{4}$ " x 2 $\frac{7}{8}$ ", O.L. 33 $\frac{1}{2}$ "
\$3,500-\$4,500



79.

80. Horn Sword Cane

Circa 1875-A dark rich horn handle, push button locking mechanism, 24" 4-sided etched blade, rich mahogany shaft and a brass ferrule.-H. 3 $\frac{1}{4}$ " x 5", O.L. 34"
\$600-\$900



80.





82.



81. Chopstick System Stick

Late 19th Century-A large silver-plated, monogrammed handle which is very well defined with village scenes throughout the handle. This fine export cane contains a hidden compartment in the shaft which houses an ivory and exotic wood dagger signed with Chinese characters and a pair of ivory chopsticks. The 10" knife has a 6 1/2" blade with blood grooves on each side and a mounted silver medallion atop the handle. Both items are fitted into a fine 8 1/2" Chinese cloisonné case which is precisely fitted for those items. It has a massive Malacca shaft and a horn ferrule.-H. 8 1/2" x 2", O.L. 36"
\$2,500-\$3,500

82. Carved Ivory Dog

Circa 1900-Ivory Dog with layers of carving, small sterling collar, exotic wood shaft and an ivory ferrule-H. 2" x 2 3/4", O.L. 35"
\$400-\$600



81.

83. Ivory Cat

Circa 1900-A very well carved cat with two color glass eyes, a rich snakewood shaft and an ivory ferrule-H. 3 3/8" x 1 5/8", O.L. 36"
\$1,500-\$2,000

83.



84. Ivory Pommel Dress

Circa 1890-Carved ivory handle with a blank ivory cartouche, small sterling collar, faux bamboo partrigewood shaft and a horn ferrule-H. 4 1/2" x 1 3/4", O.L. 36"
\$300-\$500



84.

85. Ivory Dog

Circa 1900-Carved ivory dog with two color glass eyes and realistic sterling muzzle, silver belt and buckle ornate collar, rich mahogany shaft and a horn ferrule-H. 4 1/2" x 1 1/2", O.L. 36"
\$600-\$1,000



85.

86. "1000 Faces" Ivory

Meiji Period-A very jovial ivory cane with wonderful faces, ornate silver collar, rich exotic wood shaft and a metal ferrule-H. 1 1/2" x 4 3/4", O.L. 35 3/4"
\$1,200-\$1,600



86.

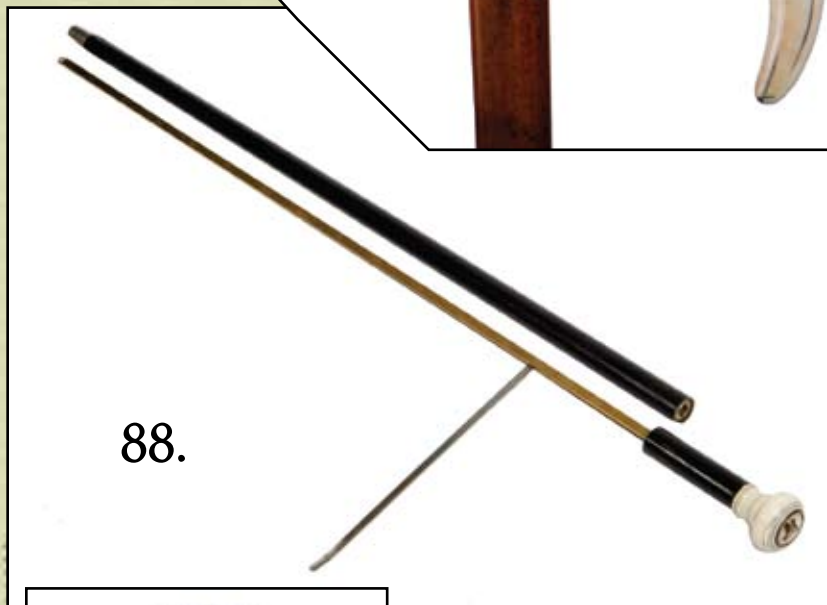




87.

87. Carved Ivory Wart Hog

Circa 1850-An unusual two piece handle with a head being carved from elephant ivory and the balance being a hog tusk. They are matched perfectly. It is our opinion that this is probably a trophy cane made for the hunter of the wild beast. The handle is attached to a silver collar which has various palm trees, houses and humans, thick rich Malacca shaft and a metal ferrule. This cane is a prime example of English Colonial.-H. 11 ½" x 5", O.L. 35" \$1,500-\$2,000



88.

88. Dog Measuring Cane

Circa 1875-Judges or breeders cane with a sliding scale to measure up to 29" in height. The ivory handle has an inlaid intaglio portrait of a bulldog which leads us to think that maybe this cane was very special to someone who owned this breed of dog. It has a ebonized shaft and a metal ferrule.-H. 1 ¾" x 1 ¾", O.L. 35 ½" \$1,400-\$1,800



89.

89. Ferrule Flick Stick

Circa 1880-A British hallmarked silver handle, an ebonized shaft and a brass ferrule. Most flick sticks come from the handle, but this stick's 5" spike blade which is signed Brigg extends from the ferrule. The locking mechanism on the spike works perfectly and this stick is much handier as compared to other flick sticks.-H. 1 ½" x 1 ¼", O.L. 34" \$1,800-\$2,200



90. Ivory and Gold Pomander

Circa 1870-An ivory pomander with a gold hand chased insert which screws tightly upon its base, rich snake wood shaft and a metal ferrule-H. 1 3/4" x 1 1/4", O.L. 34"
\$400-\$700



91. Memento Mori Ivory

Late 19th Century-A well carved walrus tusk, signed sterling collar, rich Malacca shaft and a horn ferrule-H. 4" x 1 3/4", O.L. 37"
\$1,200-\$1,500



92. Hematite Dress

Early 20th Century-A well colored gem stone, 8 pointed sterling silver crown collar, rich snakewood shaft and a metal ferrule-H. 2" x 2", O.L. 35 1/2"
\$500-\$600



93. Gambler's Cane

Circa 1885-An ivory handle which contains a working roulette wheel, small ivory collar, a pair of ornate silver eyelets, unfigured snake wood shaft and a metal ferrule-H. 2" x 2", O.L. 36 1/2"
\$900-\$1,200



96.



94. African American Ivory Automation

Late 19th Century-A precisely carved ivory handle with a push button operation. When you push the ivory button on the back of the head, both eyes move and the tongue sprints forward, gold plated collar, ebonized shaft and an ivory ferrule-H. 2 ½" x 3", O.L. 35 ¾" \$2,000-\$3,000

94.



95. Horn Sword Cane

Circa 1885-A honey colored horn, gold filled ornate collar, a working push button 12 ½" blade signed London, Malacca shaft and a metal ferrule-H. 3 ½" x 5", O.L. 35" \$600-\$900

96. Tortoiseshell Dress

Circa 1900-A solid tortoise handle which is carved into the shape of a form of a horse's fetlock, gold filled collar, partridgewood shaft and a brass ferrule-H. 3" x 3 ½", O.L. 34 ¾" \$800-\$1,200



95.

97. Nautical Ivory Fist and Baton

Dated 1881-Very nicely carved whales tooth handle, ribbed coin silver collar, another sterling collar, very rich snakewood shaft and a metal ferrule. The top of the fist is inscribed "C. B. 1891"-H. 2 ½" x 2", O.L. 34 ¼"
\$800-\$1,200

98. Scrimshaw Ivory Cane

Circa 1870-Carved whale tooth handle, inlaid exotic wood shaft and a brass ferrule, half hexagonal shaft and half square shaft-H. 2 ½" x 1 ½", O.L. 35 ¼"
\$400-\$600

99. Japanese Cinnabar Lacquered Handle

Circa 1890-A very ornately carved handle, spider web signed sterling collar with flying birds, exotic wood shaft and a brass ferrule-H. 3" x 1 ¼", O.L. 34 ½"
\$500-\$800

100. African American Folk Art

Circa 1890-A one piece carved and polychromed African American with exaggerated features, retains most of its original paint, bi-metal ferrule and is in original condition-O.L. 35 ½"
\$600-\$800



101.



101. Massive Japanese Ivory

Circa 1890-A very finely carved large ivory handle with a perching eagle with two color glass eyes, royal lady in a Kimono and fine detailed character carvings throughout, signed sterling collar, exotic wood shaft and a metal ferrule-H. 5 1/2" x 1 3/4", O.L. 37"

\$1,800-\$2,200

102. Pristine Damascene Dress

Circa 1890-A pristine gold intaglio cut damascene handle with much time applied to the details. It has an exotic wood shaft and a metal ferrule-H. 3 3/4" x 2 1/2", O.L. 34"

\$800-\$1,200

103. Sterling Container Cane

Dated 1892-A very nice hallmarked Art Nouveau cane which has a tight removable lid, exotic wood shaft and a brass ferrule-H. 2 3/4" x 1 1/4", O.L. 34 3/4"

\$400-\$600

104. Limoges Cobalt Dress

Art Nouveau-An unusual French porcelain cane with royal colors and gold paint overlay, handle is signed Limoge France, faux bamboo partridge wood shaft and a large metal ferrule-H. 1 3/4" x 2", O.L. 34 1/2"

\$500-\$800



102.



104.

103.



105. Carved Stag Dress

Circa 1880-A detailed carved head with two color glass eyes, the antler handle has an over-wrap of copper which is partially silver plated, hardwood shaft and no ferrule-H. 4" x 5", O.L. 31 ¾" \$500-\$600



105.

106. Bombay India Nautical Presentation

Dated 1879-A carved ivory whales tooth handle with a baleen roundel atop, silver collar with the following presentation "Thomas Ormiston Princess Doc Bombay 11th Nov. 1875. 10th April 1879", unusual painted grain, exotic wood shaft and a horn ferrule-H. 1 ½" x 1 ¼", O.L. 34 ½" \$400-\$600



106.

107. Madam Recamier Porcelain Dress

Late 19th Century-A hand painted and decorated porcelain handle with moriage decoration, gold filled spiral collar, ebony shaft and a metal ferrule. She was a close female friend of Napoleon.-H. 3" x 1 ¼", O.L. 33 ¼" \$400-\$600

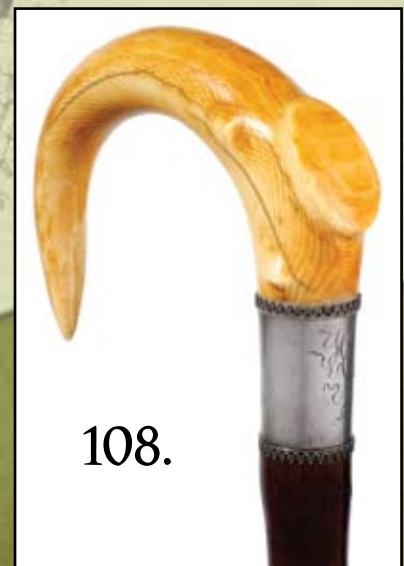


107.



108. Ivory Claw Cane

Victorian-Elephant ivory handle which is carved to look much like a claw, nice thumb rest, signed sterling ornate collar which has an engraving "H.M.C.", rich stepped bamboo shaft and a brass ferrule-H. 3 ½" x 4 ¼", O.L. 35 ¾" \$400-\$500



108.

109.



110.



109. Holuska Watch Cane

Late 19th Century-A hallmarked coin silver handle and collar, patented watch, makers initials are T.P., Malacca shaft and a metal ferrule, some denting to the handle-H. 1 ½" x 1 ½", O.L. 37"
\$2,000-\$2,200

110. Whale Ivory Court Cane

Mid 18th Century-Carved whales tooth handle and two ivory eyelets with original tassel, rich hardwood shaft and a 4 ½" brass ferrule-H. 1 3/8" x 1 ½", O.L. 46"
\$1,100-\$1,300

111. French Gold Court Cane

Circa 1780-A multi colored gold handle in very fine condition, proof marked but unreadable, rose gold eyelets, rich Malacca shaft and a 3" metal ferrule-H. 1" x 1 ¾", O.L. 46"
\$2,000-\$2,500

111.



112. Tiffany Roosevelt Cane

Mid 1930's The Tiffany wedding dress cane of the author Elliott Roosevelt and the son of U.S. President Franklin D. and Eleanor Roosevelt. Small 1" ivory knob personalized with his ER initials and its slim gold ring stamped GOLD 18K, ebony shaft and a horn ferrule. Struck with the hallmarks of TIFFANY & Co MAKERS on the bottom of the shaft. Endorsed by the recorded, honorable provenance.

O.L. 353/4"

\$2000-\$3000

112.



113.-English Ivory Nefertiti

Circa 1900 - A massive figural ivory handle carved after the iconic bust of Nefertiti, the chief consort of the Pharaoh Akhenaton in the 18th dynasty. Rich Malacca shaft, ivory ferrule and a wide silver collar with London hallmarks. H- 5" x 3 3/4". OL-37 1/4"

\$1500-\$2500



114. American Eagle Ivory Cane

Circa 1875- Ivory Eagle, Malacca shaft and a bronze ferrule. It is well carved with a beautiful composition showing five eagles. H-3 1/2" x 1 1/3" OL- 34 3/4"

\$1000-\$1500



113.



114.



115.

115. Ivory Young Man

Circa 1895- Expertly carved handle with a naughty young boy in suspenders, original Malacca shaft, braided white metal wire collar, and a bronze ferrule.H.-2 ¾" x 2" OL-36 ½" \$800-\$1200

116.

116. Russian Nobleman's Cane

Circa 1840-The first 10 inches of this cane are engraved in a circle with an elaborate coat of arms flanked by two upright lions with a crown crest topped by a third beast branding a sword. It is fashioned of a straight and single piece of deep black ebony with a horn ferrule .OL 37 ¼" \$700-\$1200



117. Silver Viennese Dress

Circa 1875-Large silver handle which is hand chased and delicately engraved in the shape of a stag leg with hoof. A particularly good real stepped zebra Malacca shaft with a metal ferrule. It is personalized by the engraved name of its first owner V. Wolf. and authenticated by two Austro-Hungarian hallmarks .H.- 4 ½" x 2 1/2" OL- 33 ¾" \$600-\$900



117.

118. English Erotic Cane

Circa 1870- An ivory handle on a deep black ebony shaft with chased silver collar and worn out bronze ferrule. The remarkably intricate and vibrant scenes are engraved with incredible fine detail, and one can even see the joyous expressions on the faces of the performing persons. Formerly the property of Roger Peyrefite, the famous French Author as per oral records. H-4" x 1 1/2" OL 35"
\$2000-\$3000



118.

119. American Marine Cane

Circa 1880-Distinguished by a substantial 2" Turk's head knot ivory knob, an ebony shaft and a metal ferrule. The shaft is carved with a twist recalling the windings of the narwhal tusk. OL- 33 3/4"
\$1500-\$2000



119.

120. Nautical Whaling Cane

Late 19th Century-Whale tooth handle, shark vertebrae shaft, and a white metal ferrule. H- 4 "x 1 1/2" O L- 31"
\$1500-\$2500



120.



121.



121. French Art Nouveau

Circa 1890- Carved ivory siren figural handle, ebony shaft and a ivory ferrule. Carved to depict a seductive siren with a long scaled fish tail H-4 1/4" x 2 1/2" OL- 34" \$1400-\$1800

122. Erotic Ivory Cane

Mid 19th Century-Erotic 2 1/4" ivory ball knob, silver collar, stepped Malacca shaft and a long ivory ferrule. The handle depicts the leader on an ecclesiastical in two different moods. The remarkably fresh and vibrant scenes are very deeply carved three dimensional with delicate undercuts. O L- 32 1/2" \$5000-\$8000

122.



123. Ivory French Dog

Circa 1875- Massive ivory biting dog head handle, ebony shaft and metal ferrule. The dog is emphasized by two inset glass eyes, mighty muzzle and sharp teeth. H-2 ¾" x 2 ¼" O L-32 ½"
\$1000-\$1600

124. Hippo Ivory English Bull Cane

Late 19th Century-Massive bull head hippo ivory handle with glass eyes ,finely chased silver collar engraved T. Withington , ebony shaft and a metal ferrule. Designed as an ergonomic handle. This could have ties to investing and financial markets. H- 4 ¾" x 1 ¾"
O L.- 37 ½"
\$1200-\$1800

125. Art Deco Ivory Girl

Circa 1920-A figural ivory knob , rosewood shaft ,two colored metal collar and horn ferrule. Most likely from the circle of Ferdinand Preis Of Germany. The quality of the original workmanship is underscored by a mint condition.H- 2 ½" x 1 ¾"
OL- 37 ¾"
\$1000-1-\$1500

126.Viennese Opal Dress Cane

Circa 1910-A hard 3"stone knob which seems to be a boulder opal in an elongated, plain and fluting shape with a round top, gilt collar , a dark rosewood shaft and a horn ferrule. Overall length 37 1/2 in.
\$400-\$700



124.



123.



125.



126.





127.



127. Important Memento Mori Russian Cane

Circa 1861- A very big ivory handle and a thick, full bark malacca shaft with high ridge and of uniform pale-yellow color fitted with a 4 1/4 in. tall and pointed steel ferrule and plain silver collar struck with Russian hallmarks including an 84 silver precious metal title and a A.C maker's mark above the date 1861. The 5" X1 3/4". handle is fashioned in a conventional L- shape and entirely engraved with two varanus burrowing in a pile of rotten human skulls and bones. A couple of dorsal spines with vertebrae and ribs add to its scary and macabre touch. OL 38 in.
\$5,000 - \$7,000



128.



128. American Patriotic Ivory

Circa 1870-A large ivory handle, malacca shaft , metal collar and metal ferrule. Fashioned in a stretched pistol shape, the 4 in. high and 3 in. wide handle is carved at the front with a loosely depiction of the First American Flag. This cane was most likely made to commemorate the centenary Declaration of Independence and the Union Flag. H- 4 " x 3" OL-35 3/4 in.
\$1200-\$2000

129. Bone Acupuncture Cane-
 Circa 1980- A well made modern
 bone handle, rich Malacca shaft,
 and a brass ferrule, H-4 ¼" x 1 ¼"
 OL- 35"
\$300-\$500

130.Ivory Erotic Ball-
 Mid to Late 20th Century- A 2 ½"
 round ivory ball with two ladies,
 Ivory and horn collar,exotic wood
 shaft and a bone ferrule. OL 35"
\$1500-\$2500

131.Dumontier Gun Cane
 19th Century- A French
 percussion in very fine
 condition.90% bluing on gun. It
 is all original with ivory handle,
 silver collars,
 Malacca shaft and metal ferrule. A
 very rare and sought after item in
 working condition. H- 5" x 5" OL
 34 1/2"
\$1500-\$2500

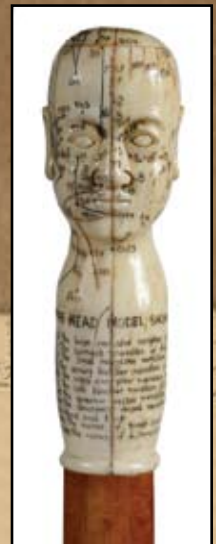
132 . Erotic Ivory-
 Circa 1930- An ivory erotic cane
 with both mail and female organs.
 It has a silvered collar, exotic wood
 shaft and a metal ferulle ..H - 1
 1/2" x ¾" OL 36"
\$600-\$1200

**133. "Fascinating Walking
 Sticks"**
 A library copy of A.E. Boothroyd
 Walkingstick hardbound book .
\$150-\$200

132.



130.



129.



131.



133.





***We are now accepting
one cane or an entire collection
for our Spring Auction.***

***Call 423.773.4073
or email kimballsterling@earthlink.net***

Kimball M. Sterling, Inc. (TFL-1915)
125 West Market Street
Johnson City, Tennessee 37601
kimballsterling @ earthlink.net
423.928.1471

Member National Auctioneers Association
© Copyright 2010 Kimball M. Sterling, Inc.



Photography by *James Price*

Catalog Design by *KT Design, Inc.*
www.kristaft.com