



Kimball & Victoria Sterling present

A WINTER CANE AUCTION

SATURDAY,
FEBRUARY 16TH, 2013

11:00 A.M. EASTERN

125 WEST MARKET
JOHNSON CITY, TENNESSEE 37604

PREVIEW -ANYTIME BEFORE THE AUCTION BY
APPOINTMENT AND THE MORNING OF THE SALE AT 9:00 A.M.

WWW.AUCTIONAUCTION.COM

KIMBALL M. STERLING, INC.
TFL-1915

TERMS & CONDITIONS

1. Cash or check. A 20% buyers' premium will be added to the hammer price as part of the sale price for all bidders. We reserved the right to hold purchases until the buyers checks clears if buyer is not known by us. Bank letter of credit is acceptable.

2. Mail or phone bids are accepted; the firm may require a deposit.

3. Kimball M. Sterling, Inc. has endeavored to catalog and describe the property correctly. All property is sold as is and neither the auction company nor the consignor will be responsible for descriptions, genuineness, provenance or condition of the property. No statement in the catalog made orally at the sale or otherwise shall be deemed to be a warranty, representation, or an assumption of liability.

4. In the event of any dispute between bidders, the auctioneer shall have total discretion to determine the successful bidder, in which his determination shall be final or to re-offer and resale the article in dispute. Title of the item or items purchased by the bidder will pass at the fall of the gavel and declaration of bidder. This is not an approval auction. All measurements are approximate.

5. Principal auctioneer: Kimball M. Sterling #2467. B. Elizabeth Sterling, auctioneer # 5757. Firm Kimball M Sterling Inc. TFL-1915

6. Bidders may bid live on the Internet by visiting <http://www.auctionauction.com> You may also view the auction at this site and bid by phone.

7. Communications:
Telephone 423-928-1471.
Fax 423-928-2816.
Cellular 423-773-4073, 423-773-4072.
Email kimballsterling@earthlink.net

8. Kimball M Sterling has worldwide shipping available. Mr. We do not ship protected items overseas but can put you in contact with a source that is very reliable and can handle all of your needs.

9. Kimball M. Sterling, Inc. will not be held responsible for bids received on the day of the auction, unexecuted absentee bids, phone bidders not contacted or slow Internet bids. Although we do attempt to get all bids executed problems do occur. There will be no recourse from the bidder. We will not be responsible for items left on our location for over 30 days.

10. Sale will be conducted at 125 West Market Street, Johnson City, Tennessee. 37604. Announcements day of the sale take precedence over pre-sale advertising. Any litigation that pertains to this auction will be conducted in the county of Washington in Tennessee and is agreed upon by registering for this auction.

11. Airport is the Tri-Cities Airport, which is approximately 20 miles from the gallery. Internet catalog and live bidding available at www.auctionauction.com Best Western Hotel: 423-282-2126. A very fine hotel which offers Sterling Auction a discount rate is the Carnegie Hotel 1216 W State of Franklin Rd, (423) 979-6400.

12. Please call for condition report on sale lots or email us. We do send out multiple photos by email of any lot in the auction. By registering for this auction you accept the terms.

13. Parking service is free.



Kimball & Victoria Sterling present

A **WINTER** CANE AUCTION



SATURDAY,
FEBRUARY 16TH, 2013
11:00 A.M. EASTERN

125 WEST MARKET
JOHNSON CITY, TENNESSEE 37604

PREVIEW -ANYTIME BEFORE THE AUCTION BY
APPOINTMENT AND THE MORNING OF THE SALE AT 9:00 A.M.

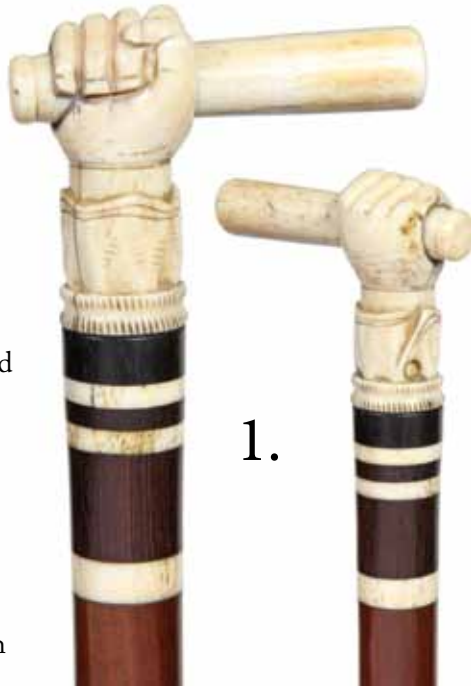
Kimball M. Sterling
Auction Gallery
125 West Market Street
Johnson City
Tennessee 37601
kimballsterling@earthlink.net
423.928.1471

Live on the internet at LIVEAUCTIONEERS.COM
Two Time Winner of Best of Show from the National Auctioneers Association

KIMBALL M. STERLING, INC.
TFL-1915

1. Whalebone Hand and Baton Cane

Ca. 1880- A finely carved hand with cuffs, bone and wood collar, exotic wood shaft, and an ivory ferrule. H. 3 ½" x 2 ¾", O.L.- 36"
\$600-\$900



1.

2. Ivory Sword Cane

Ca. 1840- An ivory knob 25" sword cane with gilding and bluing, coin silver eyelets and mounts, coin silver collar and a 3" brass ferrule. H. 1 ½" x 2", O. L. 36"
\$900-\$1200



3.

3. Whalebone Nautical Cane

Ca. 1875- An unusual whales tooth handle with baleen side panels, carved hand, exotic wood collar with inserts of abalone, whalebone shaft and never has a ferrule. H. 1 5/16" x 6", O.L.- 35 ½"
\$1500-\$2000

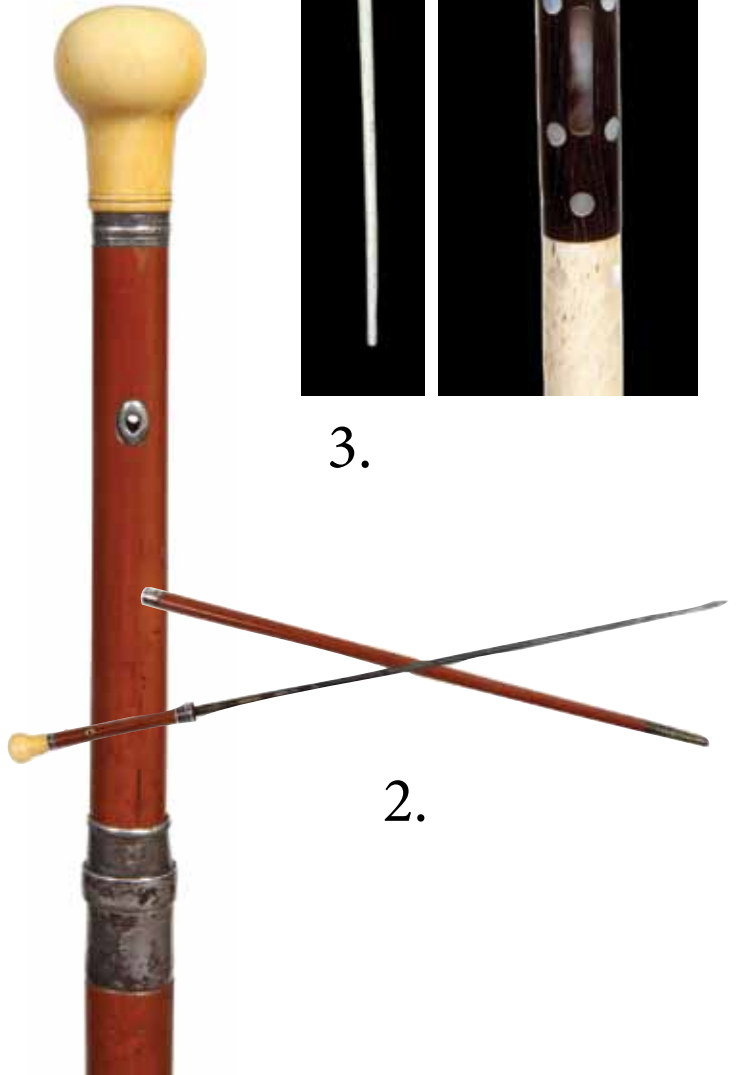
5.

4. Ivory Dog Cane

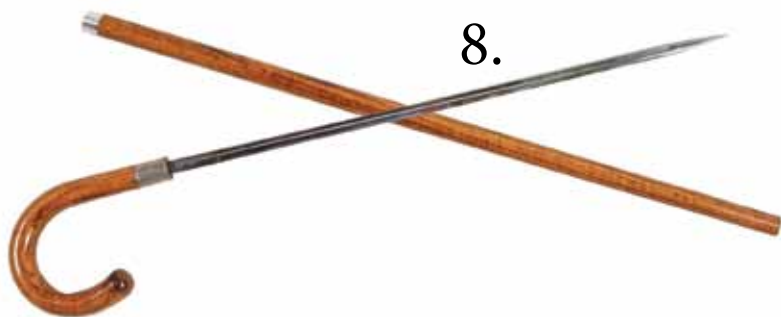
Ca. 1900- A carved ivory dog with glass eyes with a basket in his mouth, silver end caps and decoration, silver collar ebonized shaft and an ivory ferrule. H. 4" x 1 ½", O.L. 36"
\$300-\$500



4.



2.



8.

6. Ivory Bear French Erotic Stanhope Cane

Ca.1900-Massive ivory carve handle with a erotic stanhope and high relief bear, stanhope is a three person image with a young lady full frontal nude bust, exotic wood shaft and a metal ferrule.

H. 4 3/4" x 2 1/4", O.L. 36"

\$1500-\$2000

9.



7. Horn and Gold Dress Cane

Ca. 1925- A substantial horn handle. Large 9kt (.375) signed and hallmarked M.K. collar, thick malacca shaft, and a horn ferrule.

H. 4 3/4" x 3 3/4", O.L.- 36"

\$350-\$500

8. Sword Cane

Ca. 1940- An oak 23" blade with blood groove, large signed sterling collar, shaft push tension blade lock, oak shaft and no ferrule. Mint.

H. 5 14" x 6", O. L. 35

\$400-\$600

9. Floral and Berry Ivory Cane

Ca. 1880- A large handle carved in high relief, very ornate silver metal collar, thick ebony shaft and a metal ferrule. H. 5" x 1 3/4", O.L. 36 1/4"

\$400-\$600

7.



10. Ivory Telescope Cane

Ca. 1925- A working 8" two draw brass telescope with leather covering, malacca shaft, leather covered collar, ivory spacer, and a copper ferrule.

H. 3 1/4" x 2", O.L.- 34 1/2"

\$500-\$700



10.



6.

11. Asian Ivory Dress Cane

Ca. 1890-Ivory knob with a dragon in the clouds, ebony shaft with a silver collar and a horn ferrule.

H. 2 ¾" x 1", O.L. 37 ¼"

\$700-\$1,000

12. Ivory French Bulldog Cane

Ca. 1880-Large ivory knob carved to depict a biting French bulldog head with inset glass eyes, ebony shaft with a plain silver collar and horn ferrule.

H. 2 ¼" x 2", O.L. 36"

\$800-\$1,200

13. Ivory Figural Cane

19th Century-Ivory crook handle with a ferocious crocodile winding on its vertical stem. Rosewood shaft with bound leather collar and an ivory ferrule.

H. 6" x 4", O.L. 37 ½"

\$1,500-\$2,000

14. Ivory Dog Glove Holder

Circa 1910-A better glove holder cane with two color glass eyes and ivory ears, coin silver collar with a "STERLING SILVER" hallmark, dark rosewood shaft and a horn ferrule.

H. 3 ¼" x 2 ½", O.L. 35 ¾"

\$400-\$600

12.

11.

13.

14.





17.

16.



15.



15. Boxwood Mouse Cane

20th Century-A well carved boxwood handle with a crouching mouse showing the characterizing pointed snout, rounded ears and a long hairless tail winding against the handle's plinth. A well-aged brown surface as well as a pair of inset dark glass eyes adds to its appeal. Sterling Silver collar with Birmingham hallmarks and an ebonized hardwood shaft with a metal ferrule. H. 2 ¼" x 2", O.L. 36 ¾"

\$700-\$900

16. Ivory Figural Art Nouveau Cane

Ca. 1900-Large ivory crook handle carved with two fish among seaweed depicted facing one another. The detail is naturalistic and very fine and accented by dark tortoiseshell inlay in the eyes. Snakewood shaft, brass ferrule and a chased silver collar with British hallmarks. H. 4 ½" x 3", O.L. 36 ¾"

\$1,800-\$2,200

17. Ivory Dolphin Cane

Ca. 1890-The ivory handle is carved of a single piece of select material to depict a dolphin riding on waves. Ebony shaft with a horn ferrule and with a chased silver collar struck with British hallmarks. H. 4 ¼" x 2", O.L. 36 ½"

\$1,500-\$2,000

18. Silver Rabbit Head Cane

London hallmarks 1906-Substantial and well chased silver long eared rabbit head handle with inset, large glass eyes. Ebony shaft with a horn ferrule. H. 3 ¾" x 2", O.L. 35 ½"

\$1,000-\$1,500



18.



19.

21.



20.



19. Ivory Eagle Cane

Ca. 1890-Substantial Opera shaped ivory handle with a stone pattern and eagle head at the front. Rosewood shaft and a horn ferrule. H. 4 ¾" x 1 ¾", O.L. 38"

\$1,000-\$1,500

20. Ivory Ball and Claw Cane

Ca. 1910-Massive hardwood ball and claw knob, rosewood shaft with a silver gilt collar and a horn ferrule. American. H. 3 ¼" x 2", O.L. 37 ½"

\$500-\$800

21. Ivory Napoleon Bonaparte Cane

Ca. 1870-The ivory knob is carved to depict the worshiped founder and idol of the Grande Nation and shows the General's bust with the customary severe facial traits and trademark Bicorn hat. Ebony shaft and a metal ferrule. H. 2 ½" x 2", O.L. 34 ½"

\$1,000-\$1,500

22. Duke of Wellington Ivory Cane

19th Century-The ivory knob is carved to portray Arthur Wellesley, 1st Duke of Wellington and shows an idealized National Hero in best age in an academic, Roman-like, sleek profile. Ebony shaft and a metal ferrule. H. 3" x 1 ¾", O.L. 35"

\$1,000-\$1,500



22.



23.



23. Anglo Colonial Cane with Royal Ties

Dated 1904-Iron wood cane fashioned of a South African Aboriginal club and fitted with a metal ferrule and 18 karat yellow collar engraved "H.R.H. PRINCESSE CHRISTIAN, FROM A.H.M.E., SOUTH AFRICA, SEPTEMBER & OCTOBER 1904". Original condition.

Princess Helena (Helena Augusta Victoria, Princess Christian of Schleswig-Holstein by marriage, 25 May 1846 – 9 June 1923) was a member of the British Royal Family, the third daughter and fifth child of Queen Victoria and Prince Albert. H. 4 1/4" x 2 1/4", O.L. 33 1/2"

\$800-\$1,200

24. Erotic Nude Cane

Ca. 1890-A large ivory seated Venus handle on a malacca shaft with a brass ferrule and a richly chased and gilt collar with engraved initials.

H. 4" x 1 3/4", O.L. 37 1/4"

\$3,000-\$4,000



24.

25. Mildly Erotic Figural Silver Cane

Late 19th Century-A good silver cast of a Victorian bust with a beautiful face, hairdo and low neck dress with visible nipples, stepped Malacca shaft with a plain silver collar and a metal ferrule.

H. 2 1/2" x 1 1/4", O.L. 37"

\$800-\$1,000



25.

26. Figural Ivory Cane

Late 19th Century-Substantial elephant ivory handle carved to depict a standing female wearing a long dress, rosewood shaft and a horn ferrule. French.

H. 5 ¼" x 2", O.L. 39 ½"

\$2,000-\$3,000

27. Porcelain Dress Cane

Circa 1890-Very large Derby porcelain handle painted with a different flower arrangement and butterfly on each side and green Baroque cartouches with rich gold scrolls on the top. Dark rosewood shaft, silver collar and horn ferrule.

Possibility Meissen.

H. 5" x 2 ¾", O.L. 38 ¼"

\$1,800-\$2,500

28. Figural Ivory Day Cane

19th Century-Ivory handle carved to depict a man's morning visit to his favorite outdoor "John Spot", malacca shaft, silver collar and a horn ferrule.

Dutch. H. 4 ¼" x 1 ¾", O.L. 35 ½"

\$1,500-\$2,000



26.



28.



27.



29.

29. Snake Wood and Ivory Figural Handle

Late 19th Century-A very large and imposing snake wood prone lioness with inset ivory teeth and glass eyes and an ivory show between her front paws, malacca shaft and a metal ferrule. Presentation collar "Jan. 7th 1896" H. 5 x 2 ½", O.L. 36 ½"

\$1,600-\$2,500

30. Figural Hardstone Dress Cane

Brigg and London hallmarks 1917.-The handle is cut of a natural brown red agate to depict a greyhound head. Long and narrow, wide between the ears and with a long tapering muzzle, it has the breed specific held back and folded ears. The carving takes advantage of the natural red hues of the stone to increase its visual appeal, while a fine furry coat and inset ruby eyes add interest and liveliness to the dog's rendering. Ebony shaft with horn ferrule and 18 karat yellow gold collar with London hallmarks 1917 beside a "CC" maker's mark and "BRIGG LONDON". It has affinities to the creations of Carl Fabergé. H. 2 ¾" x 2", O.L. 37"

\$4,000-\$5,000



30.



31.



32.

31. Ivory Elephant Cane

19th Century—An ivory elephant on a tree with a long trunk flanked by a pair of mighty tusks. Unusual fine detail to the face, skin and tail. Rosewood shaft with a flush set black horn collar and black horn ferrule. Top-rate London quality. H. 3 ½" x 3 ½", O.L. 37 ½"

\$2,500–\$3,500

32. Hard Stone Dress Cane

Ca. 1900—Large and well-proportioned Opera shaped rhodonite handle of an intense pink color and with distinguishing dark veins, ebony shaft with a silver collar and a horn ferrule. This cane is in the taste of Carl Fabergé, has possibly Russian ties and belongs to the most desirable upscale jewelry Objects of Virtue. H. 4 ¾" x 2", O.L. 37"

\$3,000–\$4,000



33.

33. High Grade "Ivoire Teinté" Dog Cane

19th Century—Large and well carved ivory hunting dog handle, select malacca shaft with a gilt metal collar and horn ferrule. Delicate undercuts as well as an entirely dark stained surface lend the dog the differentiating touch which makes all the difference. Indeed, this cane is one of those legendary "ivoires teintés" which borrows its technique to the early photography and chemical salts which darkens with the sunlight. H. 4 ¼" x 2", O.L. 34 ¾"
\$2,500–\$3,500

34. Tiffany Dress Cane

Early 20th Century—A long silver handle modeled in an ergonomic, vertical and plain shape on a pale lemonwood shaft with a horn ferrule. The collar stamped on one side "TIFFANY & CO." above an unidentified signature and "ENGLAND" and struck on the other side with a full set of London Hallmarks. H. 4 ½" x 3", O.L. 36"
\$1,000–\$1,400



35.



34.

35. Gold Mounted Hardstone Dress Cane

Ca. 1880—Milord shaped bluish hardstone knob with an 18 karat yellow gold sleeve on the top and with a matching collar on the bottom. The sleeve is delicately hand chased and engraved in the Louis XVI and is struck with French hallmarks. Snakewood shaft and a horn ferrule. H. 2 ½" x ¾", O.L. 38"
\$1,000–\$1,500

36. Large Ivory Rabbit Cane

London Hallmarks 1908-A wonderful example of the much admired horizontal English ivory rabbit's head with furry coat and backwards extending long ears; malacca shaft and a brass ferrule.

H. 4 $\frac{3}{4}$ " x 1 $\frac{3}{4}$ ", O.L. 37"

\$2,500-\$3,500

37. Dual Purpose Ivory Cat Cane

Late 19th Century-Substantial ivory handle carved with a charming cat portrait inspired by the drawings of Louis Wain, rosewood shaft and a horn ferrule. The knob unscrews to disclose a hidden compartment which was probably intended for pills or snuff.

H. 2 $\frac{3}{4}$ " x 2", O.L. 34 $\frac{1}{4}$ "

\$1,500-\$2,000

38. Elephant Day Cane

Ca 1900-A tropical wood elephant head with inset glass eyes, silver collar and rosewood shaft and a horn ferrule. H. 3 2", O.L. 36 $\frac{1}{2}$ "

\$500-\$700



39.



39. Erotic Nude Cane

Late 19th Century—Large ivory handle sensitively carved to depict a standing Venus showing all her charms in a bent position with her face on one side and her intimate parts on the other, gilt collar with an engraved, personalizing signature and a multiple wood marquetry shaft with a metal ferrule. H. 3 3/3" x 1 3/4", O.L. 37"
\$4,000–\$6,000

40. Art Nouveau Dress Cane

Ca. 1890—Large silver crook handle hand chased and engraved with a reclining nude, well streaked rosewood shaft and a horn ferrule. "800" hallmark - 4 3/4" x 4 3/4", O.L. 36 1/2"
\$1,000–\$1,500

41. Ivory Sailor Cane

19th Century—Ivory left fist with frilled cuff, grasping a substantial bottle of whisky with label and cork, malacca shaft, silver collar and metal ferrule. Likely English. H 5" x 3 1/4", 35 1/2"
\$2,000–\$3,000

40.



41.



42. Ivory Day Cane

Ca. 1880-Ivory right fist tightly holding a metal dumbbell, rosewood shaft with gilt fittings and a horn ferrule. An abundance of engraving. H. 3 ½" x 2 ½", O.L. 39 ¼"

\$800-\$1,200

43. Ivory Erotic Cane

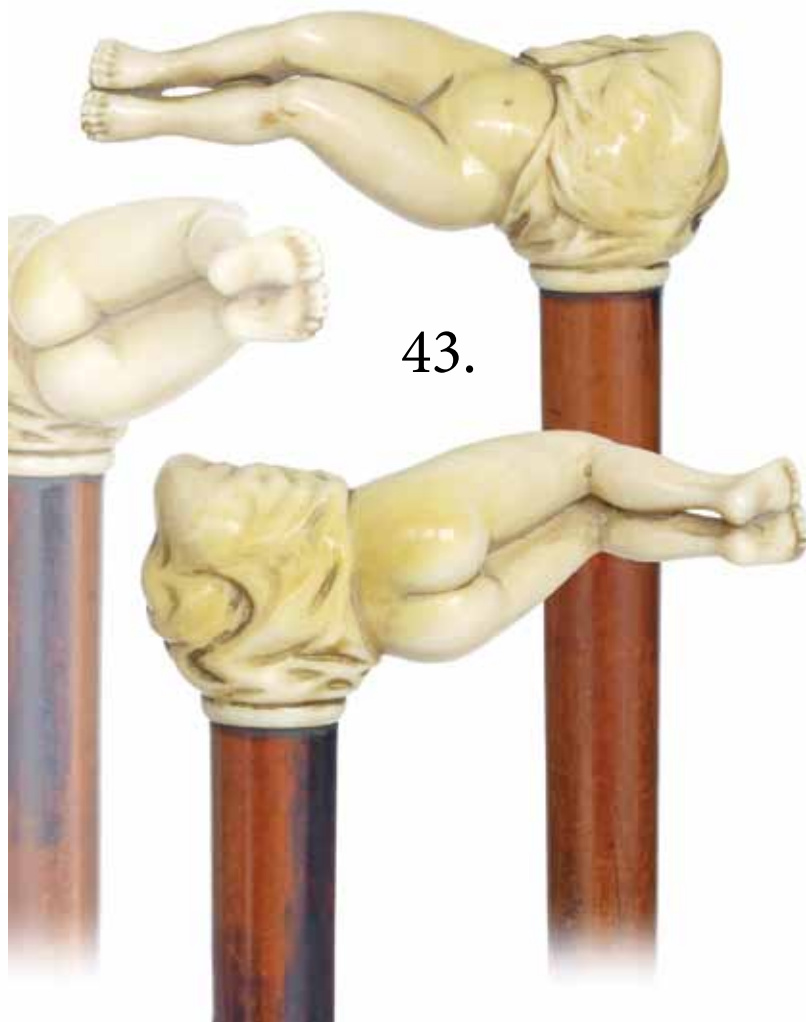
Ca. 1890-Large ivory handle showing a reclining nude woman with the head and chest covered by a wrinkled bed sheet, malacca shaft and a brass ferrule. A flawless carving with tactile sensuality. H. 5" x 2", O.L. 35 ½"

\$3,000-\$4,000

44. Ivory Erotic Cane

Ca. 1920-Substantial ivory handle carved to depict a woman's lower bust in erotic undergarments, black thorn branch shaft and a metal ferrule. French. H. 3 ¾" x 2", O.L. 33 ¾"

\$1,200-\$1,800



43.

42.



44.



45.



45. Hard Stone Dress Cane

19th Century-Substantial smoky quartz handle fashioned in a early and perfectly balanced asymmetrical Baroque shape with a well-dressed malacca shaft, braided silver wire collar and a metal ferrule.

H. 4 $\frac{3}{4}$ " x 1 $\frac{3}{4}$ ", O.L. 36"

\$4,000-\$5,000

46. Silver Noble Man's Cane

18th Century-Substantial silver knob hand chased and engraved with two panels within rich Baroque framing, well dressed malacca shaft and a metal ferrule.

H. 2 $\frac{3}{4}$ " x 1 $\frac{1}{2}$ ", O.L. 35 $\frac{1}{2}$ "

\$800-\$1,000

47. Hard Stone Dress Cane

Circa 1900-Large T-shaped pale blue chalcedony handle, gilt silver collar and a beautifully veined rosewood shaft with a horn ferrule. This cane is in the taste of Carl Faberge, has possibly Russian ties and belongs to the upscale jewelry Objects of Virtue.

H. 3 $\frac{1}{2}$ " x 1 $\frac{3}{4}$ ", O.L. 38"

\$2,000-\$3,000

47.



46.



48. Folk Art Cane

Dated 1904-Fashioned of a single branch of hardwood and carved with a snake, deer, bird and dog heads. OL. 34"
\$1,000-\$1,500

49. Ivory Physicians System Cane

European, 19th Century-Straight ivory handle with ball and stem on a real rosewood shaft with a horn ferrule. The ball unscrews to reveal an 8 1/2" tall mercury-in-glass thermometer with a -10 to +50 centigrade degrees scale. H. 3 1/4" x 1 1/2", O.L. 35 3/4"
\$800-\$1,200

50. Erotic Ivory Art Nouveau Cane

Ca. 1900-Stretching pistol shaped ivory handle carved at the front with a standing naked woman reverently reproducing the classic shape of the Venus, ebony shaft with a metal collar and an ivory ferrule. French. H. 7 1/4" x 1 3/4", O.L. 36 1/2"
\$1,500-\$2,000

51. Figural Silver Cane

20th Century-A well-cast silver bust of a beauty wearing all her attire and with a pretty hairdo and impressive and large feathered hat, ebony shaft and a brass ferrule. Birmingham hallmarks. H. 4" x 2", O.L. 36 3/4"
\$700-\$900



49.

48.

51.

50.



54.



55.



52. Ivory Moon Face Cane
Ca. 1880-Large ivory crook handle carved with a smiling moon face and decorated with stars, pepper bamboo shaft with a silver collar and a horn ferrule.
H. 4 1/4" x 3 1/4", O.L. 35 3/4"
\$1,000-\$1,600

53. Whimsical Man Ebony Dress Cane
Ca. 1880-Could be a clown or just a man of the street, ivory inlay and glass eyes, ebony shaft with a silver collar and a horn ferrule.
H. 3 1/4" x 2 1/4", O.L. 37"
\$800-\$1,200

54. Ivory Horses Cane
German 19th Century-Vertical ivory handle carved with a panel showing four horses in open grassland with trees in the background, reeded top and beaded framing. snakewood shaft and horn ferrule.
H. 4 1/2" x 1 1/4", O.L. 34 1/2"
\$1,500-\$2,500

55. Ivory Day Cane
Ca. 1880-Ivory handle is carved of the tip of an elephant tusk with a dog at the front and a running hare towards the back. Both animals are naturalistically rendered and enlivened with inset glass eyes. The shaft is well-streaked rosewood, horn ferrule and silver collar with Birmingham hallmarks.
H. 4 1/2" x 1 1/2", O.L. 37 1/4"
\$800-\$1,200

53.



52.



**56. Ivory Graduate
Owl head Cane**

Ca. 1900-Well carved and amusing ivory "Graduate" owl head with a monocle and a silver tasseled Tudor Bonnet, inset glass eyes, ebony shaft, silver collar and horn ferrule. English.

H. 2" x 2", O.L. 36

\$1,000-\$1,500



56.

57. Striking Panther Cane

Ca. 1880-Substantial semi-crook horn handle carved with a crouching panther on a massive ebony shaft fashioned with a twist and fitted with a flush set ivory washer-collar and an ivory ferrule. Anglo-Colonial.

H. 5 1/4" x 2 3/4", O.L. 37 1/4"

\$800-\$1,200



57.

58. Figural Ivory Cane

19th Century-The fine grained ivory knob is carved by an academic artist to represent a public personality of the day, snakewood shaft, metal ferrule and a 2 1/2" tall, fringed silver collar finely with framing scrollwork.

H. 3" x 1 1/4", O.L. 35"

\$800-\$1,200



58.

59. Folk Art Portrait Cane

Ca. 1880-A better folk art portrait of a man with beard, mustache and inset glass eyes, plain silver collar, ebony shaft and a horn ferrule. Quality carving.

H. 5 1/4" x 2", O.L. 36 3/4"

\$700-\$900

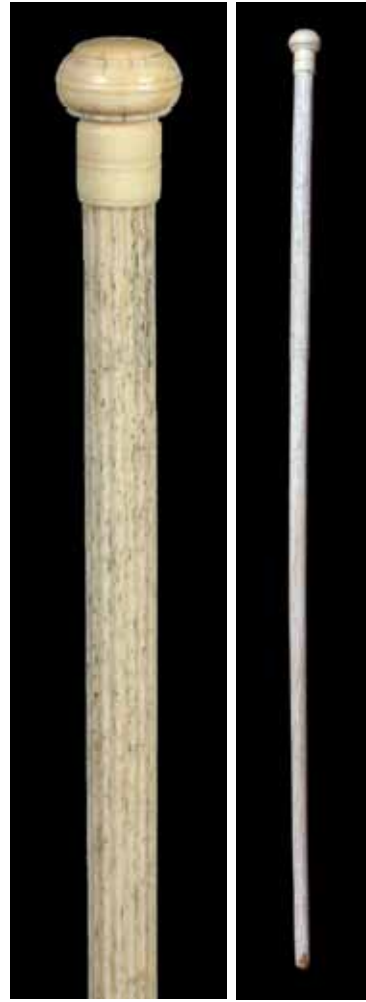


59.

62.



63.



61.



60. Hardwood and Ivory Figural Cane

Ca. 1900-Hardwood Hercules head knob with an ivory face and inset glass eyes to the face as well to the Nemean's Lions cap, rosewood shaft, silver collar and a horn ferrule.

H. 3 1/4" x 2", O.L. 36 3/4"

\$800-\$1,200

61. Whale Eye Nautical Cane

Ca 1875-A sailor's made whale's tooth handle with a rare "whale eye" sea shell atop, three baleen spacers, baleen collar, exotic island wood shaft and a whalebone shaft.

H. 5" x 1 1/2", O.L. 34"

\$1,300-\$1,600

62. Nautical Whalebone Cane

Ca. 1870-A carved whale's tooth for a handle with an inlaid tortoise disc atop, ribbed and other architectural carvings on the shaft and no ferrule. Quality carving.

H. 1 3/8" x 1 3/8", O.L. 35 3/4"

\$1,400-\$1,600

63. Whalebone Nautical Cane

Ca. 1870-A turned whalebone tooth for the handle, quality carved whalebone upper shaft is fluted for about 40% of its entire length and never had a ferrule.

H. 1 1/2" x 1 3/4", O.L. 36"

\$1,400-\$1,600



60.

64.



64. Asian Ivory Cane

Ca. 1890-An upscale carving of a mountain of rats with beaded eyes, a hallmarked silver Brig, London collar, thick snakewood shaft and a metal ferrule.

H. 4" x 1 1/2", O.L. 37"

\$1,000-\$1,300

65.



65. Andy Jackson Ivory Cane

Mid 19th Century-An ivory carving of Old Hickory himself with nice original patina, an original hickory twigspar shaft with ivory buttons attached and a brass bullet ferrule.

H. 2 1/2" x 1 3/4", O.L. 35 3/4"

\$1,200-\$1,400

66.



66. Rhino and Ivory Dress Cane

Ca. 1900-A carved ivory handle with an early repair, unmarked silver collar with a gold medallion attached, full rhino shaft and a metal ferrule, this cane is warranted for 30 days for full refund to the buyer to be rhino if he has any doubt.

H. 4" x 1 3/4", O.L. 33 1/2"

\$6,000-\$7000



67.

67. Pair of Sword Canes

Ca. 1900-The first being a 28" blade with a locking mechanism but has a problem unlocking sometimes, the other is an ivory top 14" blade with a bamboo shaft, silver metal collar with no locking mechanism and a bimetall ferrule - average O.L. 36"
\$600-\$700



68.

68. Tiffany Vinagrette Sterling Cane

Ca. 1910-A silver removable handle which is signed "Tiffany & Co. Maker's Top", probably a smelling salts cane due to the 5 holes atop the handle, sterling collar, exotic wood shaft and a horn ferrule.
H. 1 1/4" x 3", O.L. 36 1/2"
\$800-\$1,200

69.

69. Spitting Chinaman Cane

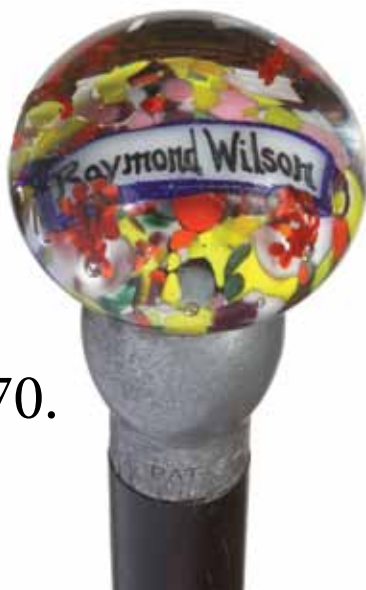
Early 20th Century-This example has the pushbutton pump on the bamboo shaft, "Pat. Appd for" is marked on the collar, not in working condition but parts are there and a metal ferrule.
H. 1 1/2" x 2 1/4", O.L. 34 1/2"
\$700-\$800



68.

70. Paperweight Dress Cane

Ca. 1930-An art glass paperweight with the name "Raymond Wilson" in the glass, patented pewter collar, exotic wood shaft and a fluted, unusual brass ferrule.
H 2" x 1 1/2", O.L. 25"
\$300-\$400



70.

71. Stag Spaniel Cane

Early 20th century-A carved stag handle with a nice carving of a dog with two colored glass eyes, brass collar, natural vine shaft and a pike ferrule.
H 5" x 2 1/2", O.L. 25"
\$300-\$400



71.

72. Ivory Horse Cane

Ca. 1880-A European carving in high relief with a rich patina, exotic wood lacquered shaft and a horn ferrule.

H. 1 3/8" x 2 1/2", O.L. 34 3/4"

\$600-\$800



72.

73. Greek Motif Dress Cane

Ca. 1885-A unique stained and India inked carved handle with a monogram atop, mahogany shaft, small break in handle and a horn ferrule.

H 1 1/2" x 3", O.L. 35 1/2"

\$600-\$700



74.

73.

74. George Washington Ivory Cane

Ca. 1880-A wonderful open fretwork carving of a rare subject matter, silver metal collar, snakewood shaft, missing fretwork on rear of cane cuts the estimate by 70% (restorable), and a metal ferrule.

H. 4 1/2" x 1 1/4", O.L. 37 1/2"

\$500-\$700



76.

75. Snake Bone Dress Cane

Ca. 1885- A unique carved bone snake with a gold filled end cap, hallmarked, "H", ornate gold filled collar, ebonized shaft and a bone ferrule. H. 4" x 1 1/8", O.L. 36"

\$350-\$450

76. Ivory Elk Cane

Ca. 1885-A carved ivory elk with an old repair, white metal upper collar, gold filled ornate lower collar, malacca shaft and an ivory ferrule.

H. 3 1/2" x 3 1/2", O.L. 33 1/4"

\$300-\$400



75.



77.

77. African American Folk Cane

Early 20th century-A very nicely carved head which is probably a Menstrual, bell bronze collar, ebony shaft and a metal ferrule. H. 2" x 1 1/4" x 1 1/2", O.L. 36"

\$500-\$600



78.

78. Bone Carved Penis Cane

Ca. 1935-A carved bone with Tibetan prayers carved all over, signed Sterling collar, malacca shaft and a horn ferrule. Former Rick Wagner Collection. H. 6" x 1 1/4", O.L. 35 1/2"

\$300-\$500

79. Philippine Silver Dress Cane

Ca. 1925-A unique silver metal handle with an engraving of palm trees and a house, fully carved shaft with various flowers and leaves and a matching silver metal collar. H. 4 1/2" x 3 3/4", O.L. 36"

\$300-\$500



81.

80. Art Deco Ivory Dog

Ca. 1925-A carved ivory whippet with two colored glass eyes and minor chips to ears, signed sterling collar, snakewood shaft and a horn ferrule. H. 4 1/2" x 1 1/2", O.L. 34"

\$600-\$700

79.



81. Ivory Gavel Cane

C. 1930-Carved ivory gavel with good weight, signed sterling collar, exotic wood shaft and a metal ferrule. H. 2 1/4" x 1 1/2", O.L. 33 1/2"

\$400-\$600



80.

82. Horn Dress Cane

Ca. 1930-A full horn dress cane with a black horn handle and honey brown segments, metal rod within shaft and a horn ferrule. H. 6" x 3 3/4", O.L. 36"

\$250-\$350

83. Gamblers Roulette Cane Handle

Ca. 1930-An unusual compartment cane with a working roulette wheel, push button hunter case watch style, the handle is threaded for attachment to a shaft, bell bronze material, comes in a custom carrying case. (We can have this shafted for the buyer for an additional cost) H. 1 3/4" x 1 1/2"

\$900-\$1200

84. Ivory Bull Dog Cane

Ca. 1900-A carved ivory handle of a bull dog with two colored glass eyes, ornate gold filled end cap, matching gold filled collar, exotic wood shaft and a metal ferrule. H. 4 1/2" x 1 1/4", O.L. 35 3/4"

\$350-\$450

85. Art Deco Silver Dress Cane

Ca. 1920-A unique near mint handle with acid striping, signed .925, unreadable hallmark, snakewood shaft and a metal ferrule.

H. 4 1/2" x 5 1/2", O.L. 36"

\$300-\$500

82.



84.



83.



85.



86.

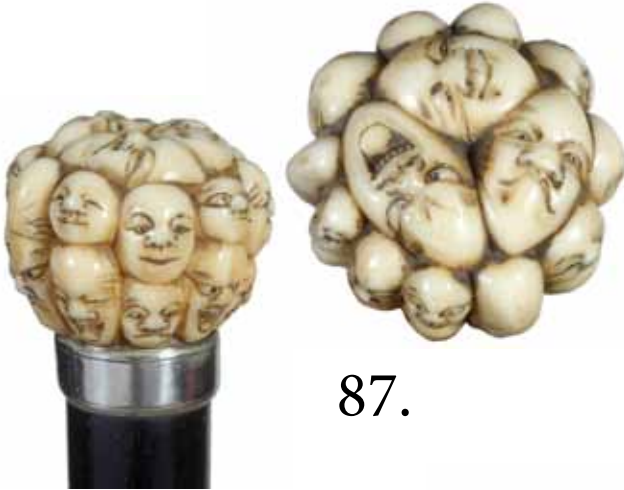


86. Asian Ivory Cane

Ca. 1900—"1000 face" ivory handle which is signed by the maker in Asian characters, silver metal collar, exotic wood shaft and a brass ferrule. H. 4" x 1 1/4", O.L. 36 1/2"

\$600-\$900

87.



87. Asian Ivory Cane

Ca. 1890-A knob "1000 face" carved handle done in great detail, silver metal ferrule, ebony shaft and a metal ferrule. H. 1 1/2" x 1 1/4", O.L. 35"

\$600-\$700

88. Romantic Ivory Dress Cane

Mid 19th Century-An large Art Nouveau finely carved handle, possibly Alexander the Great, signed sterling collar, malacca shaft and a 3 1/4" brass ferrule. H. 3 1/2" x 1 3/4" x 2 1/4"

\$2,000-\$2,500

89. Tiffany Sterling Dress Cane

Dated 1891-A removable sterling handle which has "Virginia Christmas 1891", cast into the handle in high relief with various foliage, probably a custom made piece by Tiffany, collar is signed Tiffany & Co. M Sterling, thick malacca shaft and a horn ferrule. H. 1 3/4" x 2 1/2", O.L. 35 1/2"

\$1,500-\$2,200

88.



89.



90. Folk Art Cane

Ca. 1930-A carved folk art cane with a high gloss varnish with various leafs and a metal ferrule.

H. 4 ½" x 2 ¼", O.L. 34 ½"

\$200-\$250

90.



94.



91. Tiffany Ivory and Silver Cane

Ca. 1890-A sterling overlay on fine grained ivory with Nouveau decoration, collar is signed "Tiffany & Co. Maker's Sterling", highly finished twig spur shaft and a horn ferrule.

H. 3 ¾" x 1 ¼", O.L. 35 ¼"

\$1,200-\$1,500



91.

92. Ebony Skull Dress Cane

20th Century-A uniquely carved handle with skulls and snakes, silver skull cast collar, ebony shaft and a 2" ivory ferrule. H. 1 ½" x 2 ½", O.L. 36 ½"

\$500-\$700

92.



93. Ivory Dog Dress Cane

Ca. 1880-A carved ivory dog with two color glass eyes with an ivory rat in its mouth, speaks to maybe being a rat terrier of sorts, signed sterling collar, natural branch shaft and a brass ferrule. H. 2" x 1 ¾", O.L. 36"

\$900-\$1,200

93.



94. Gold Dress Cane

Ca. 1895-A fancy cast and bright cut probably gold filled handle with no wear, thick exotic wood shaft and a brass ferrule. H. 1 ¼" x 1 ¼", O.L. 36"

\$400-\$500



98.



97.

95. Toledo Sword Cane

Ca. 1890-An ornate ivory handle with a carved ivory medallion, a 14 1/2" signed Toledo blade with a working push button mechanism, Malacca shaft and a horn ferrule. H. 3 1/2" x 4", O.L. 36 1/2"

\$1,000-\$1,500

96. Shark Vertebrae Cane

Ca. 1925-A near mint example with horn spacers and large horn handle tip, interior metal shaft for stacked vertebrae and a horn ferrule. H. 5" x 4", O.L. 34 1/2"

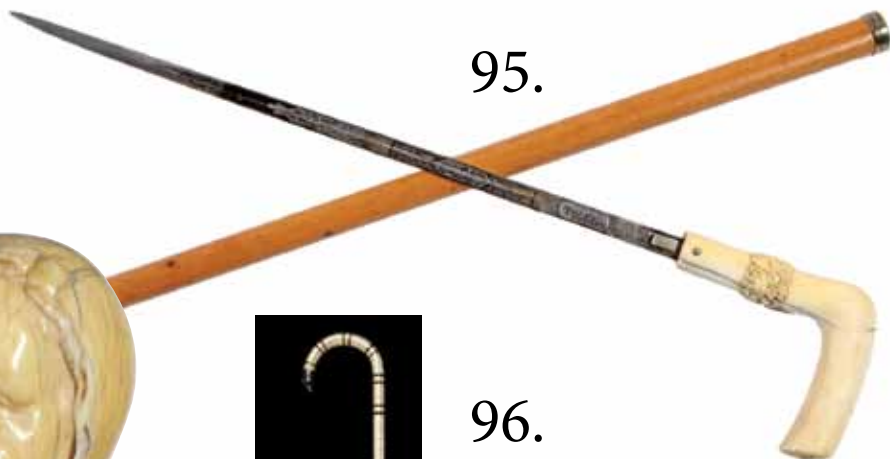
\$400-\$500

97. Ivory Crying Baby Cane

Ca. 1875-An ivory crying baby with bonnet, thick Malacca shaft and an ivory ferrule. H. 1 3/4" x 1 1/2" x 2 1/2", O.L. 34 1/2"

\$700-\$900

95.



96.



98. Art Nouveau Ivory Dress Cane

Ca. 1890-A carved ivory mysterious lady, signed "F. A. Allen", gold toned collar, walnut shaft and a stag ferrule. H. 3 1/4" x 1 3/8", O.L. 36"

\$500-\$600

99. Two Swords Canes Blade

19th Century-The first with a quarter turn locking device and a pair of spring operated hand guards has a 27" long tempered steel blade with one edge on the first two thirds of its length and diamond shaped on the rest. The second is as well fitted with a quarter turn locking device and has a 12 1/2" tall and plain foil blade. Working mechanics.

\$700-\$1,000

99.



100. Dual Purpose Picnic Cane

Ca. 1900-Longer and plain ivory knob, ebony shaft and an ivory ferrule. The knob unscrews to reveal a feather supported 6" long fitted fork and knife set with white metal and ivory handles and steel blades.. For similar pieces see C. Dike, Cane Curiosa, chapter 2, Food and Drink. H. 3 1/4" x 1", O.L. 36 1/2" \$800-\$1,200



101.

101. Satirical Ivory Dog Cane

Late 19th Century-Ivory handle carved to depict a humanized dog dressed as a gentleman with a formal suit and riding cap. Ebony shaft with a wide silver gilt collar with obscured hallmarks and a horn ferrule. H. 2 3/4" x 2", O.L. 39 1/4" \$800-\$1,200

102. Ivory Dog Cane

Late 19th Century-L-shaped ivory handle carved with a crouching dog, the head over its front paws at the front and back part with tail on the rear to give the impression that the canine goes through the handle, malacca shaft and a horn ferrule. H. 4 1/4" x 2", O.L. 36 1/2" \$700-\$1,000



102.

103.

103. Silver Scarf Holder Cane

London hallmarks 1908-Good quality and very large swiveling loop over silver handle, ebony shaft and a horn ferrule. H. 6 1/2" x 4 1/2", O.L. 39 3/4" \$500-\$700



100.





104.

104. Ambroid and Ivory Cane

Ca. 1890-Substantial brown-red ambroid crook handle with an ivory squirrel eating a nut, rosewood shaft with a plain silver collar struck with obscured Birmingham hallmarks and a horn ferrule. Secured character line to the handle.

H. 4 ½" x 4 ½", O.L. 37 ½"

\$800-\$1,000



105.

105. Ivory Tiger Cane

London hallmarks 1912-Large ivory handle naturalistically carved to depict a resting tiger, glass eyes and fur coat with stained stripes. Makassar ebony shaft with a wide silver collar and horn ferrule.

H. 2 ½" x 2 ½", O.L. 36"

\$1,200-\$1,800



106.

106. Ivory Pelican Cane

19th Century-Large and bright ivory pelican on reeds handle, malacca shaft with a leather bound collar and an ivory ferrule. The aquatic bird is well rendered. French.

H. 4" x 2 ¼", O.L. 36 ½"

\$1,500-\$2,000



107.

107. Meissen Porcelain Dress Cane

Ca. 1890-Royal cobalt blue ball on long stem painted with a putto playing a mandolin on the top and an elaborate golden initial on the stem, extensive and raised gold moriage, ebony shaft with metal fittings and a horn ferrule.

H. 5 ½" x 1 ½", O.L. 38"

\$800-\$1,500

108. Ivory Gold Piqué Cane

First half of the 19th Century - Long ivory handle turned and faceted and embellished with micro gold piqué, rosewood shaft and a horn ferrule. French. H. 4 ¼" x 1 ¼", O.L. 39 ½"
\$800-\$1,200

109. Noh Masks Ivory Cane

Late 19th Century-Japanese export ivory handle carved with four rows of Noh Masks in various sizes. Ebony shaft with a plain silver collar and a missing ferrule.
H. 3 ¾" x 1 ¼", O.L. 38"
\$800-\$1,000

110. Ritual Klan Skull Cane

19th Century-Ebony and ivory hooded skull knob, flush set ivory collar and an ebony shaft with a horn ferrule. Oral legion from the consignor is that it belonged to a member of the Ku Klux Klan from Pulaski, Tennessee.
H. 3 ¼" x 1 ½", O.L. 36 ½"
\$800-\$1,200

111. Japanese Ivory Dress Cane

Ca. 1890-A large mushroom shaped Japanese export elephant ivory handle carved with Chrysanthemums, malacca shaft and a metal ferrule. H. 3 ¼" x 2", O.L. 35 ½"
\$1,200-\$1,800



108.

110.



111.



109.



112.

113.



**112. Tortoiseshell
Dress Cane**

Beginning of the 20th Century-Well streaked tortoiseshell crook handle on an ebony shaft with a metal ferrule and plain Sterling silver collar with Birmingham hallmarks. H. 4 1/4" x 3 1/2", O.L. 36 1/2" \$600-\$900

**113. Tortoiseshell
Camel Cane**

Birmingham 1875-Figural tortoiseshell camel head handle, 9 karat yellow gold collar, polished makassar ebony shaft and a horn ferrule. H. 2" x 1 3/4", O.L. 36 1/2" \$1,000-\$1,500

114. Ivory Rabbit Cane

Ca. 1890-Large ivory handle with a crouching rabbit on a longer stem with two ivory eyelets, glass eyes and a well figured hair coat. Ebony shaft and an ivory ferrule. H. 3 1/4" x 2", 36 1/4" \$1,000-\$1,500



114.



115.

115. Meiji Bird Cane

Ca. 1890-A Japanese staghorn handle with an exotic bird perched above its nest with eggs, tiny ruby cabochon eyes in yellow gold frames. Makassar ebony shaft with a horn ferrule and a wide silver collar with London hallmarks and an engraved personalizing shield for "N. HAIGH". H. 4" x 2", O.L. 36 3/4" \$900-\$1,200



116. Jade Dress Cane

Ca. 1890-Pale nephrite jade ball with short stem, plain silver collar, malacca shaft and a 4 ½" tall white metal ferrule. The spirit of this cane speaks for Russian parentage. H. 2" x 1 ¾", O.L. 38 ½"
\$500-\$700

117. Tula Silver Dress Cane

Second half of the 19th Century-Staight and tapering Tula silver handle entirely decorated with a plentitude of stars and dots, select malacca shaft and a metal ferrule. Viennese hallmarks H. 2 ¼" x 1", O.L. 35"
\$600-\$900

118. Ivory Eagle Cane

19th Century-A massive ivory handle carved to depict an eagle head with mighty beak, fine feather coat and two inset glass eyes. The head comes on a substantial, half vertically ribbed and half plain plinth with two silver ring collars and a well-aged malacca shaft. Superb quality in a rarely encountered and striking large size and in excellent condition. H. 4 ¼" x 4 ¾", O.L. 36"
\$3,000-\$4,000



118.

116.



117.





119.

119. Squatting Frog Cane

Ca. 1890-Hardwood squatting amphibian perched on rocky ground with two large and protruding eyes. Oak shaft which hints for an English origin, plain silver collar and a metal ferrule.

H. 2 ¼" x 2 ¼", O.L. 36"

\$600-\$800

120. Ivory Buddha Cane

Ca. 1880-Well carved and larger fine grained ivory Buddha head, deep black ebony shaft and a horn ferrule. Hand chased silver collar with Birmingham hallmarks.

H. 3" x 1 ¼", O.L. 37 ¼"

\$800-\$1,200

120.



121. Figural Day Cane

Ca. 1890-Well carved boxwood Robin Hood knob showing the heroic outlaw reputed for "robbing from the rich and giving to the poor" with a feather hat and inset glass eyes on a boxwood shaft with a silver collar. Excellent high and fine relief with minor chipping.

H. 3 ¼" x 2 ½", O.L. 36 ¾"

\$800-\$1,000

122. Ivory Wild Life Cane

Ca. 1860-A very large ivory handle carved in high relief and delicate undercuts with a stag and two deer against a mountainous landscape, select malacca shaft and a horn ferrule. The best what Germany had to offer in its day.

H. 4 ¾" x 1 ¾", O.L. 36"

\$1,000-\$1,500

121.



122.



123. Ivory Hunting Cane

Ca. 1870-An elongated pistol grip shaped handle with a resting hunter and his shot Alpine wild goat, ebony shaft and an ivory ferrule. German carving with deep relief and fine detail.

H. 4 1/4" x 1 3/4", O.L. 35 3/4"

\$600-\$800

124. Horn Dog Cane

Early 1900s-Horizontal black horn handle carved with a retriever in a set stance, ebony shaft with a horn ferrule and a plain Sterling silver collar with English hallmarks.

H. 4 1/4" x 1 1/2", O.L. 36 1/4"

\$700-\$900

125. Wildlife Allegory Cane

19th Century-Long and straight boxwood handle beautifully designed as a tree stem with various wild animals carved within its rough bark. At the top one can see a fox, a dog, a monkey and a grouse head, followed by a winding lizard above two nests with eggs followed by large owl and boar heads. Rosewood shaft with a gilt metal collar and a horn ferrule.

H. 9 1/2" x 1 3/4", O.L. 37"

\$700-\$1,000

126. Parrot Head Dress Cane

19th Century-Well carved hardwood parrot head with two color glass eyes, richly ornate and gilt silver collar, dark rosewood shaft and a horn ferrule.

H. 3 3/4" x 2 1/4", O.L. 36 1/2"

\$600-\$800

125.

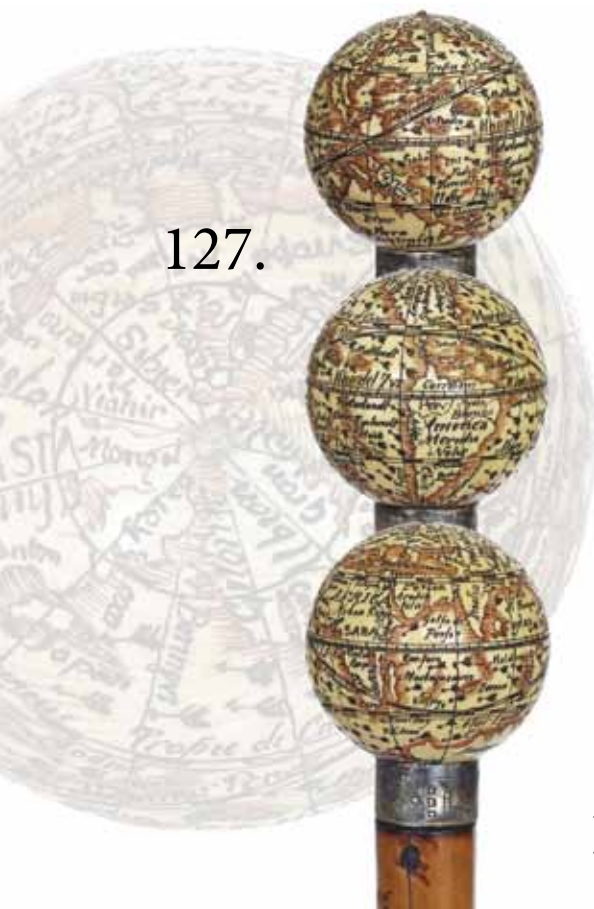


123.

126.



124.



127.

128.



127. Globe Ivory Cane

19th Century—Terrestrial globe cane accurately carved in scrimshaw technique with the continents and the oceans and their related appellations. The globe comes on a malacca shaft with a metal ferrule and London hallmarks. H. 2" x 2", O.L. 34 ¾" \$1,000–\$1,600

128. Oriental Parade Cane

20th Century—Ebony cane with an ebony ball knob lavishly embellished with mother of pearl inlay and what seems to be red stained tortoiseshell in various diamond patterns, gilt brass collars and ferrule. H. 5" x 1 ¾", O.L. 36 ½" \$500–\$700

129. Wild Vine & Ivory Portrait Cane

Ca. 1890—Fashioned of one bizarre and knobbed grown, wild vine with a bulb root set with ivory and carved to depict the face of a knight, metal ferrule. The story that was passed along with this cane is that it belonged to Henri Cain, the famous French dramatist, who wrote the libretto of the opera Don Quixote (Don Quixote) by Jules Massenet. H. 2 ½" x 2 ¼", O.L. 33 ½" \$1,000–\$1,500

130.



129.

130. Ivory Portrait Cane

19th Century—Ball knob with a cartooned man's head, makassar ebony shaft with a finely chased and gilt collar and a horn ferrule. H. 2" x 2", O.L. 35 ½" \$800–\$1,200

131. Folk Art Hardwood Handle

Ca. 1880-A long and dark hardwood handle with silver eyelets carved with the head of a man wearing a bonnet, ebony shaft with a plain silver collar and a metal ferrule. American. H. 5 ¾ x 1 ¾", O.L. 36"

\$400-\$500

132. Ivory Dog Cane

Beginning 20th century. -Ivory long haired dog head with an integral belt collar and two inset glass eyes, well dressed malacca shaft with a long horn ferrule and two 18 karat yellow gold eyelets, one with London hallmarks 1916. H. 2 ¾" x 1 ¾", O.L. 35 ¼"

\$900-\$1,200

133. Figural Day Cane

Ca. 1880-Well carved boxwood monkey's head with two large and inset glass eyes, fine rosewood shaft, horn ferrule and a silver collar engraved "JACKO and ECC". French. H. 1 ¾" x 1 ¾", O.L. 36"

\$600-\$800

134. Ivory Monkey Cane

19th Century-One piece ivory handle carved a a squatting monkey, ebonized hardwood shaft, worn out ferrule. H. 5 ¾" x 1 ½", O.L. 37 ¼"

\$900-\$1,200



132.

131.



134.



133.

135.



135. Figural Silver Day Cane

Ca. 1900-Silver handle cast in the shape of a dog clamping on an upright rock, ebonized shaft and a metal ferrule. Whimsical carving. H. 3 ½" x 1 ¾", O.L. 36"

\$600-\$800

136.



136. Tepliz Wood, ivory and Silver Dog Cane

Circa 1900-A malacca day cane with a crook handle ending with a well carved dog head ornate with an ivory snout and applied silver, worn metal ferrule.

H. 6 ½", O.L. 36"

\$700-\$1,000

137.



137. Art Nouveau Dress Cane

Ca. 1890-Straight snakewood handle with two filigree, floral silver bands within three slimmer silver rings, rosewood shaft with a leather bound collar and a horn ferrule. Nothing fails to please in this tasteful cane which sports several features unique to Cazal who patented a spring for parasols in France 1839.

H. 4 ¾" x ¾", O.L. 37 ½"

\$700-\$900

138.



138. Ivory Lion Cane

Anglo-Indian, 19th Century-L-shaped ivory handle with snarling lion head, deep black ebony shaft with a wide silver collar and a horn ferrule. Well carved.

H. 4 ¼" x 1 ½", O.L. 37 ½"

\$700-\$1,000

139. Decorative Silver Day Cane

Birmingham hallmarks
1913-Single piece shaved malacca shaft with an integral crook handle and a silver ram head cap, a plain silver wrap collar and a metal ferrule.

H. 2 ¼" x 1 ¼", O.L. 36 ¼"
\$600-\$800



139.

140. Satirical Ivory Cane

19th Century-Ivory handle carved to depict a humanized cat head with hat and knotted scarf, glass eyes, ebony shaft, silver collar and a horn ferrule. French.

H. 2 ¾" x 2", O.L. 39 ¼"
\$1,000-\$1,400



140.

141. Figural Day Cane

Ca. 1880-Gilt bronze knob well-modeled, cast and chased in the shape of a crying child's head with heavy tear drops in the eyes. The integral, angular and tapering plinth has a German engraving "Meine liebes Herzblatt" which translates "My darling sweetheart". Rosewood shaft and a horn ferrule.

H. 4" x 2", O.L. 36 ½"
\$900-\$1,200



141.

142. Anti-Semitic Stag Cane

Early 20th Century-A carved reindeer antler portrait with a bird, nest with eggs on the exaggerated long nose, ebony shaft and a metal ferrule, ornate gilt collar with English hallmarks. H. 4" x 3 ¼", O.L. 35 ½"

\$400-\$500



142.

143.



144.

145.

146.



143. Bronze Soldier Cane

Ca. 1900-A cast bronze French Napoleonic soldier head with fine detail and rich patina, plain silver plated collar, ebony shaft and a horn ferrule.

H. 3 ¼" x 1 ½". O.L. 39 ½"

\$500-\$700

144. Revival Ivory Cane

Ca. 1910-Ivory scarab on an integral ribbed plinth, ebony shaft with an ivory ferrule. Anglo-Egyptian cane from period of the great Pharaonic excavations discoveries of early 1900s.

H. 1 ¾" x 1", O.L. 35 ½"

\$500-\$700

145. Hardtone and Enamel Dress Cane

19th Century-Long Indian agate handle of a greenish color and with the intriguing, material specific green, leafy-like inclusions. Silver and guilloche enamel, rosewood shaft and a horn ferrule. Hallmarked and a G.A.S. maker's stamp for the celebrated Georg Adam Scheid, one of the most recognized silversmiths and enamellers worldwide.

H. 2 ¾", O.L. 37"

\$600-\$800

146. Ivory and Horn Figural Cane

Ca. 1890-Vertical ivory handle carved with a tropical beach and palm trees, on one side there is a seated sailor and his parrot and on the other a pelican and a large turtle. The handle is topped by a plain turned black horn knob, ebony shaft and a horn ferrule. H. 3 ½" x 1 ½", O.L. 36 ¾"

\$800-\$1,000

147. Silver Owl Cane

Ca. 1880-Well modeled silver nocturnal bird with the trademark large eyes and a fine feather coat, dark stained fruitwood shaft and a metal ferrule.

H. 3" x 2 1/2", O.L. 36"

\$600-\$800

148. Ivory and Ebony Dress Cane

Circa 1870 -Ivory knob delicately carved with a crown over an integral collar with stylized leaves centered by a ring of dots, ebony shaft and an ivory ferrule. French.

H. 1 3/4" x 3/4", O.L. 36"

\$500-\$700

149. Jade Dress Cane

London hallmarks 1909-Plain and dark greenish jade ball on a well figured and light bleached snakewood shaft with a silver collar and a brass ferrule.

H. 1 1/4" x 1 1/4", O.L. 36 1/4"

\$400-\$600

150. Ivory Walnut Cane

19th Century-The knob is a carved study of a walnut and shows the edible deeply ridged and wrinkled two lobbed seed in a cracked hard shell, makassar ebony shaft with metal collar and horn ferrule.

H. 2" x 1 3/4", O.L. 36"

\$600-\$900



148.



150.



147.



149.



151.

151. Tiffany Gold Dress Cane
Early 20th Century-A mushroom gold handle signed "Tiffany & Co. 18kt solid gold", exotic wood shaft and a metal ferrule. H. 1 ¼" x 1 5/8", O.L. 35"

\$600-\$800

152.



152. Art Nouveau Dress Cane
Ca. 1890-An acid etched 3-sided handle, probably gold over silver, ebony shaft and a metal ferrule. H. 5 ½" x 2 ½", O.L. 36 ½"

\$250-\$350



153.

153. Ivory Horse and Lady Cane

Ca. 1870-A high relief carving of a lady upon a jumping horse which is playing with an ivory hound, thick honey malacca shaft and a brass ferrule. H. 4" 1 ½", O.L. 36"

\$2,500-\$3,000

154. Makila Pike and Dagger Cane

Ca. 1900-A nice example and an original, handle unscrews to reveal a 3" pike, leather wrapped handle, original lanyard holder and a brass and iron bullet pike ferrule. O.L. 35 ½"

\$500-\$600

154.



155. Toledo Sword Cane

Ca. 1890-A signed 20" Toledo Blade with a twist and lock mechanism, unsigned sterling handle, Malacca shaft and a metal ferrule.

H. 2 3/4" x 1 1/4", O.L. 36"

\$900-\$1,200

155.



156. Chinese Ivory Dress Cane

Ca. 1930-A carved ivory Chinese handle with various animals, signed sterling collar, Malacca shaft and a stag ferrule.

H. 2 3/4" x 1 3/8" x 1 3/8", O.L. 35 1/2"

\$600-\$700

156.



157. Erotic Nude and Skull Cane

20th Century-A carved ivory handle with a nude lady with flowing hair and 10 various skulls, signed sterling collar, mahogany shaft and an ivory ferrule.

H. 4 1/2" x 2 1/4", O.L. 36"

\$600-\$800



157.

158. Evening Dress Cane

Ca. 1880-An unusual gold filled and mother of pearl handle, gold filled collar, ebony shaft and a brass ferrule.

H. 3 1/2" x 1 1/2", O.L. 35 1/2"

\$400-\$500

159. Porcelain Dress Cane

Ca. 1890-Probably Meissen, painted with cupids and heavy moriage work, rich cobalt color, gilt metal collars, ebonized rosewood shaft and a brass ferrule.

H. 5 1/2" x 1 1/2", O.L. 36"

\$600-\$800

159.



158.



162.



160.



160. Gutta-Percha Dress Cane

Ca. 1870-A Canadian presentation cane with a silver collar, both handle and shaft are Gutta-Percha and a brass ferrule. H. 4" x 4", O.L. 35 3/4"

\$300-\$400

161. Bulldog Automation Cane

Ca. 1900-A carved wooden handle with two color glass eyes, horn ears and collar, push button jaw mechanism for holding a pair of gloves, fine maple shaft and a horn ferrule. H. 2 1/4" x 3", O.L. 36"

\$500-\$600

162. Art Deco Dress Cane

Ca. 1925-A unique sterling over ivory handle, octagonal silver top ring, small silver collar, beach wood shaft and a horn ferrule. H. 1" x 1", O.L. 36"

\$250-\$350

163. Asian Ivory Cane

Ca. 1910-A nicely carved ivory handle of the "1000 faces" design, signed with two Asian characters, silver metal collar, hardwood shaft and a brass ferrule. H. 1 1/2" x 1 1/2", O.L. 35 1/2"

\$500-\$700

161.



164.



164. Chinese Silver Dress Cane

Ca. 1890-A silver cast village scene with people in bamboo shoots, minor dents atop, Malacca shaft and a copper ferrule. H. 1 1/4" x 2 1/4", O.L. 35"

\$300-\$400

163.



165. Horn Dress Cane

Ca. 1875-A natural and beautiful horn handle, unique signed sterling collar, thick malacca shaft and a horn ferrule. H. 5" x 3 1/2", O.L. 36"
\$350-\$500



166.

166. Ivory Compass Cane

Ca. 1820-Nautical ivory handle with a working period compass atop, silver collar with two silver eyelets, English oak shaft and a 5" copper ferrule.
H. 1 1/2" x 2", O.L. 38 1/2"
\$600-\$900



167. Ivory Dress Cane

Ca. 1890-An elephant ivory handle with a monogram atop, silver metal collar, birds eye maple shaft and a horn ferrule.
H. 1 1/4" x 1 1/2", O.L. 36"
\$200-\$300



167.

168. Erotic Bone Garter Belt Cane

Ca. 1890-A unique and provocative carved bone handle, woven wire collar, this cane screams of nautical work, bamboo shaft and a metal ferrule.
H. 3" x 1 5/8", O.L. 32 1/2"
\$700-\$900



168.

169. Going Ashore Cane

Ca. 1850-A carved ivory handle with a 1" mother of pearl disc atop, well carved a patinated thick ebony shaft and a metal ferrule.
H. 2 1/2" x 1 1/2", O.L. 36"
\$400-\$600



169.

172.



170. Carved Frog Cane

20th Century-A nicely carved frog with two color glass eyes done in great detail, silver metal collar, thick hardwood shaft and a horn ferrule.

H. 3" x 2", O.L. 36"

\$400-\$600

170.



171. Ivory Dog Handle Cane

Ca. 1880-A carved ivory hound with two color glass eyes, a unique buckled collar with visible English hallmarks, nice partridge wood shaft and a brass ferrule.

H. 2 1/2" x 1 3/4", O.L. 35 1/2"

\$500-\$700

173.



172. Gold-filled Dress Cane

Ca. 1885-A nice embossed handle probably by Simmons, an unusual hollow but firm natural grown shaft and a metal ferrule.

H. 1 1/2" x 2", O.L. 37"

\$300-\$400

175.



173. Ivory Crown Motto Dress Cane

Ca. 1875-An ivory disc handle with beautiful India inking atop, bell bronze collar with lanyard loop, rosewood shaft and a metal ferrule.

H. 2" x 1/4", O.L. 35"

\$300-\$500

171.



174. British Silver Dress Cane

Ca. 1900-An embossed silver handle with English Hallmarks, thick Malacca shaft and a brass ferrule.

H. 1 1/2" x 1 3/4", O.L. 34 1/2"

\$200-\$300

174.



175. Ivory Presentation Cane

Dated 1879-A large ivory handle with a worn cartouche, India inked presentation on end cap, thick malacca shaft and a metal ferrule.

H. 4" x 4", O.L. 35 1/2"

\$400-\$600

176. Sterling Dress Cane

Early 19th Century-A massive coin silver handle with hand engraving and cross hatching, 1 ¼" octagonal exotic wood shaft with a small brass ferrule.

H. 1 ½" x 1 ¾", O.L. 33"

\$300-\$500

177. Horn and Ivory Dress Cane

Mid 19th Century-A most unusual full horn cane with oval inset ivories in the handle and ivory tips to the carved shaft, diamond shaped silver collar and a 2" brass ferrule.

H. 5" x 2 ½", O.L. 34 ½"

\$600-\$900

178. Horn Hound Dog Cane

Ca. 1930-A wonderful carved horn hound dog with two color glass eyes, woven copper collar, stacked horn shaft and a copper ferrule. H. 5" x 5", O.L. 37"

\$500-\$800

179. Chinese Ivory Dragon Cane

Ca. 1910-A finely carved dragon with a moving ivory ball in his mouth, beaded horn eyes, ornate gold filled collar with raised decorations, ebonized shaft and a metal ferrule.

H. 4" x 1 ¾", O.L. 35"

\$400-\$600

180. Telescope Cane

20th Century-A 16 ½" four draw brass telescope in working order, ivory ball, brass collar, exotic wood shaft and a 3" brass ferrule.

H. 6" x 2", O.L. 35 ¾"

\$600-\$900



177.



176.



179.



178.



180.



181.

182.



181. Ivory Horse and Hound Cane

Ca. 1925-A substantial carved handle with two color glass eyes, ornate signed sterling collar, snake wood shaft and a 2 3/4" metal ferrule. H. 5 1/2" x 1 3/4", O.L. 35"
\$500-\$800

182. Snake and Antler Cane

Ca. 1880-A unique silver snake and overlaid signed sterling handle, bamboo shaft and a metal ferrule. H. 5 1/2" x 2 1/2", O.L. 35"
\$500-\$700



184.



183. Mythological Bone Cane

Ca. 1930-A carved bone handle of a young hooved child playing a flute instrument, probably Anglo American, wood collar, bamboo shaft and a 4" copper ferrule. H. 4 1/2" x 2", O.L. 35 1/2"
\$400-\$600

184. Ivory Elephant Cane

Ca. 1935-A carved ivory handle with a silver metal elephant with two color glass eyes and ivory tusk, silver metal collars, carved faux bamboo one piece bone shaft and a metal ferrule. H. 5 3/4" x 1 3/4", O.L. 33"
\$500-\$700



183.



185. Ivory Frog Cane

20th Century-A whimsical carved ivory frog with two color bulging glass eyes setting atop a lotus flower, ribbed signed sterling collar, faux bamboo snake wood shaft and a metal ferrule. H. 3" x 1 5/8", O.L. 36"
\$500-\$700

185.

186. Ivory Frog Cane

Ca. 1950-A carved ivory frog with two color glass eyes atop a stack of books, large bone segment between two ivory collars, exotic wood shaft and an ivory ferrule. H. 5" x 1 ¼", O.L. 35 ½"

\$500-\$700

186.



187. Carved Bull Dog Cane

Early 20th Century-A carved stag dog with two color glass eyes, gold chain, signed sterling collar, exotic wood shaft and a metal ferrule. H. 2 ¼" x 2 ½", O.L. 35 ¾"

\$300-\$500

189.



188. Art Glass Cane

Ca. 1940-A red white and blue glass swirl handle, gold metal collar, ebony shaft and a horn ferrule. H. 1 ½" x 1 ½", O.L. 35 ½"

\$200-\$350

188.



189. Ivory Monkey Cane

Ca. 1930-"See no evil, hear no evil, speak no evil", carved ivory handle, long ivory collar, ebony shaft and a horn ferrule. H. 1 ¾" x 5", O.L. 36"

\$400-\$600

187.



190. Stag Bear Cane

Ca. 1935-A carved ivory antler which doubles as a cork screw, embossed silver collar, thick ebony shaft and a horn ferrule. H. 3 ½" x 1 ¼", O.L. 37"

\$500-\$600

190.





192.

191. Classical Nude Dress Cane

Dated 1898-A cast silver plated handle with raised decorations, one large nude and three cherubs, ebonized shaft and a metal ferrule.
H. 3 ¾" x 2 ¼", O.L. 34 ½"
\$300-\$500



192. Ivory Horse Cane

Mid 20th Century-Carved walrus ivory horse with two color glass eyes done in high relief, silver swirl metal collar, maple shaft and a horn ferrule.
H. 4 ½" x 2 ¼", O.L. 35"
\$500-\$600



191.

193. Inuit Ivory Cane

Ca. 1925-A walrus ivory carved handle with a polar bear and what appears to be a fox, unique stylized carving, one piece handle, exotic wood shaft and an ivory ferrule.
H. 2" x 1" x 7 ½", O.L. 36"
\$700-\$1,000



193.

194. Ivory Horse Hoof Cane

Ca. 1920-A large ivory horse leg with a signed sterling hoof, ornate signed sterling collar, silver inlaid rosewood shaft on a bone ferrule.
H. 4 ½" x 1 ¼", O.L. 35"
\$500-\$600



194.

195.

195. "Hands On" Horn Cane

Ca. 1865-A two color horn "hands on" handle with great Victorian carving, small silver ornate collar, snake wood shaft and a metal ferrule.
H. 6" x 1", O.L. 36"
\$500-\$600



196. Horse Buggy Whip Cane

Ca. 1900-A fine example of "The Patent Cane Whip, Springfield, OH", buffalo horn handle, ribbed brass collar, leather wrapped shaft which contains the 2nd half of the 66" buggy whip, and a brass ferrule.

H. 1" x 2", O.L. 37"

\$800-\$1,200



196.



197. Thomas Jefferson Folk Art Cane

19th Century-A Thomas Craddock exceptional carving on the life of the former president, various birds, animals and fish and leaf carving depicting the history of the life of this president including his Masonic ties, original finish and a brass ferrule.

O.L. 35 1/2"

\$1,000-\$1,300



198.



197.



198. Damascene Dress Cane

Early 20th Century-A mint example of this genre, handle is ribbed 70% with handwork between the ribs and on the continuation of the cane, a large gold depiction of an animal atop the handle, snake wood collar, rich snake wood shaft and a spiral ornate brass ferrule. H. 7" x 1", O.L. 36"

\$600-\$900

199. Damascene Crook Dress Cane

Ca. 1900-A large damascene handle with complete etched work, snake wood shaft and no ferrule.

H. 4 1/2" x 7/8" x 4 1/2", O.L. 34"

\$600-\$900



200.

200. Cockatiel Head Cane

19th Century-Massive and naturalistically carved hardwood cockatiel head with a fine feather coat, curving beak and two glass eyes, ebony shaft with a wide Sterling silver collar with Birmingham hallmarks and a horn ferrule. H. 3 1/4" x 2 1/4", O.L. 37"

\$700-\$900



199.

201.



201. A Fine Gold Presentation Cane

Ca. 1880-Gold rolled L-shaped handle densely hand chased and decorated in high relief with rich scrollwork and flowers and personalized with an engraved cartouche "Capt. Robt. Watson". Ebony shaft and a worn out ferrule. H. 3" x 2 3/4", O.L. 34 1/2"

\$400-\$600

202.



202. Ivory Owl Dress Cane

Ca. 1880-L-shape ivory handle carved with an owl between integral braid and a belt collar, rarely encountered grenadillo wood shaft and a horn ferrule. French.

H. 4 3/4" x 3 3/4", O.L. 36"

\$700-\$900

203.



203. Bamboo Snakes Cane

19th Century-Larger bamboo cane with natural root as knob, shaved and finely carved in low relief with three intertwined snakes and a frog, horn ferrule. Superb Japanese quality and signed by the artist.

H. 3 x 2", O.L. 35 3/4"

\$300-\$400

204. Folk Art Cane

19th Century-Single piece of two colored rosewood fashioned with a horizontal handle over a hollowed lace-like twist. The artist took his art to a great advantage in separating the colors of the timber and create a true and singular piece of art. Possibly American. H. 2 x 1 1/4", O.L. 36 1/2"

\$300-\$400

205.



205. Art Nouveau Feminine Dress Cane

C. 1890-A small Opera handle chased with different flowers on each side, ebony shaft with a metal ferrule. German half-moon and 800 hallmarks and a "GESCH." stamp (Patent). Intact.

H. 2 1/2" x 1 1/2", O.L. 32 1/2"

\$300-\$400

204.



206. Character Cane

Ca. 1900-Imposing cane made of a branch naturally grown with a twist-
Top diameter 4", O.L. 40"

\$200-\$300

207. Drum Major Mace

Ca. 1920-Large white metal ball knob
on a fruit wood shaft with white metal
eyelets, encircling white and red cotton
cords ending with two very large tassels
and a 6 1/2" tall white metal ferrule.

German. H. 7" x 3 1/2", O.L. 50"

\$200-\$300

208. Hardstone Dress Cane

Ca. 1910-Orange yellow jade handle
with a foggy structure, rosewood shaft
with metal collar and a horn ferrule.

H. 3" x 1", O.L. 38 1/4"

\$200-\$300

209. Cleric Cane

Ca. 1900-Pistol shaped horn handle
set with a silver Austro-Hungarian
Imperial Crowned Eagle coin.
Fruitwood shaft with ivory cross and
dot inlay, silver ring collar and a metal
ferrule. H. 3 x 1 1/4". O.L. 36 1/4"

\$200-\$300

210. Folk Art Cane

19th Century-Fashioned of one
sturdy olive tree branch with an
integral L-shaped handle carved on
one side with a stylized dog head
and on the other with the face of a
bearded shepherd. A superb product
of the distinguished ancient Corfu
cane making tradition introduced by
the English protectorate to the Ionian
island. It is signed "KERKYRA" which
translates "Corfu", metal ferrule.

H. 5" x 3", O.L. 35 3/4"

\$300-\$400



206.

207.

210.

209.

208.



211.

214.



211. Chinese Spitting Cane

Ca. 1920-A nice example of this system stick with a pumping pony tail which causes water from the cavity of the cane to spit through the lips of the man, mechanism is working but needs some tweaking to be operable, small dent in head, bamboo shaft and a metal ferrule. H. 1 ½" x 2", O.L. 35 ¾" \$500-\$700

212. Ivory and Enamel Dress Cane

Ca. 1890-A large ivory handle with average striations, cobalt blue enamel upper collar with some damage, 14kt gold collar, ebony shaft and a horn ferrule. H. 3 ½" x 7", O.L. 36" \$400-\$600

213. Substantial Gold-filled Dress Cane

Ca. 1895-A large and ornate handle probably made by Simmons, 1" thick ebonized shaft and a metal ferrule. H. 4 ½" x 1" x 3", O.L. 37" \$400-\$600

214. Silver Dress Cane

Ca. 1885-A plain coin silver handle, 1 ¼" Malacca shaft and a metal ferrule-H. 1 ¾" x 1 ¼", O.L. 36 ½" \$250-\$350

215. Full Tortoise Dress Cane

Ca. 1890-A prime example of a full tortoise with no worm holes and just one minor separation near the ferrule, rose gold filled end cap, attached monogram and a metal ferrule-H. 4 ½" x 3 ½", O.L. 36" \$1,000-\$1,500



212.



215.



213.



216. Nautical Whalebone Cane

Ca. 1875-An L shaped ivory handle with wood spacers, 5/8" whalebone shaft and no ferrule. H. 3" x 1 1/2", O.L. 35"

\$500-\$700

217. Northwest Coast Carved Cane

Ca. 1920-A natural stag antler handle, carved totem shaft with abalone eye inserts and no ferrule-H. 5" x 1 1/2", O.L. 36"

\$300-\$500

218. Shark Vertebrae Cane

Ca. 1870-An early and nice nautical souvenir with a burl walnut carved handle, bronze collar, a perfect vertebrae shaft and a metal ferrule H. 2" x 3", O.L. 34 1/2"

\$300-\$500

219. French Defensive Cane

Mid 20th Century-This is an older reproduction of an original with a working pewter handle, pewter collar, exotic wood shaft and a horn ferrule. H. 1 1/2" x 3 1/2", O.L. 36"

\$400-\$600

220. Asian Carved Shaft Folk Cane

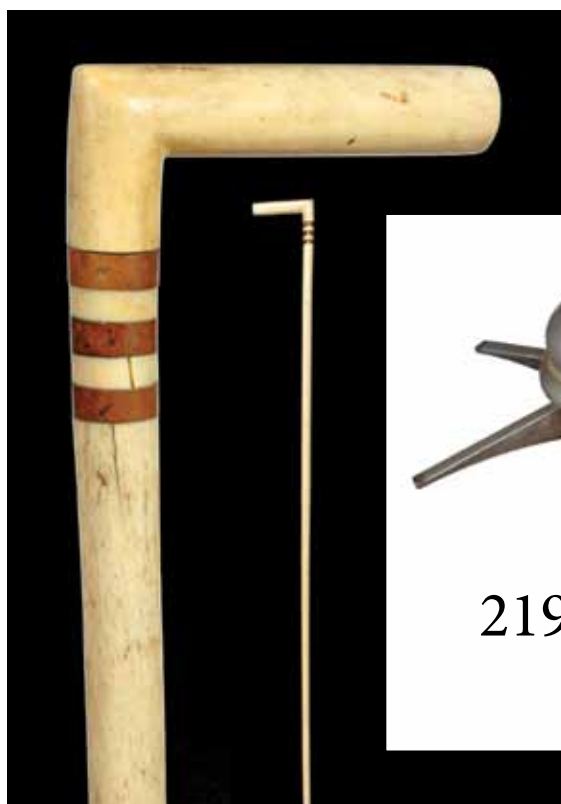
Early 20th Century-A one piece hardwood cane which is 60% carved of Asian faces, signed with 9 characters with one being in red which may mean Imperial. H. 4 1/4" x 4", O.L. 36"

\$400-\$600

221. Snake Folk Art Cane

Ca. 1860-A fully carved American Oak shaft, glass eyes, and a 3 1/2" brass ferrule. O.L. 35 1/4"

\$250-\$350



216.



219.



218.

220.

217.

221.



222.

222. Bone Bull Dog Cane

Dated 1917-A carved bone bulldog with two color glass eyes, dated coin silver hallmarked presentation collar, natural branch shaft and a metal ferrule. H. 2" x 1 1/4", O.L. 37"
\$250-\$350

224.

223. Carved Duck Cane

Early 20th Century-A carved burl with two color glass eyes, woven wire collar, mahogany shaft and a horn ferrule. H. 3 1/2" x 2 1/4", O.L. 35 1/4"
\$200-\$300



225.

224. Mikila Dagger Cane

Late 19th Century-An original weapon cane with a horn handle, original brass fittings, 3" interior pike, exotic wood shaft, original brass ferrule which is split and a stepped pike ferrule. O.L. 36"
\$300-\$400



223.

225. Pair of Ivory Canes

\$200-\$300

226. Group of 6 Canes

\$200-\$300

227. Group of 5 Canes

Included in this lot is a Japanese sword cane from the 1930's which needs minor shaft repair
\$200-\$300

226.



227.



228. Two Modern Canes

One being a signed Gucci Italy watch compartment cane and the other a Bridges paper weight cane
\$300-\$400

228.



229. Four Piece Lot

Including an early camel whip, African and natural grown folk
\$200-\$400

229.



230. Sterling and Gold Dress Cane

Ca. 1885-An ornate sterling handle with rose gold initials atop, silver eyelets, exotic wood shaft and a brass ferrule. H. 1 3/4" x 2", O.L. 34"
\$300-\$400

231.



231. Ivory and Wood Dress Cane

Ca. 1885-A well executed carved wood and ivory bearded gentleman handle with two color glass eyes, ivory collar, ebony shaft and a horn ferrule. H. 4" x 3 1/2", O.L. 35 3/4"
\$300-\$400

232.



232. Asian Ivory Ape Cane

Ca. 1890-A master carving of an ape with two color glass eyes, bird and rat with glass eyes, frog perched behind the leaf in the cat tails, gold metal collar, cherry wood shaft and an ivory ferrule.
H. 4" x 1 3/4", O.L. 36"
\$600-\$900

230.



233. Ivory Sword Cane

Ca. 1900-An ivory carved bird handle with a 33" ornate eagle engraved blade, locking brass mechanism, massive mahogany faux bamboo shaft and a carved tree branch ivory ferrule.
H. 3 3/4" x 1 1/4", O.L. 37"
\$600-\$900

233.





237.



235.



234.



236.

234. Asian Silver Dress Cane

Ca. 1890-A massive silver handle with a high relief casting of a lion chasing lambs, small silver collar, coin silver eyelets, honey malacca shaft and a horn ferrule.

H. 3" x 1 3/8", O.L. 37"

\$250-\$300

235. Sand Nicolas Silver Cane

Dated 1910-A silver presentation cane from Santo Domingo, nice sterling handle, hardwood shaft and missing ferrule.

H. 1 3/4" x 1 3/4", O.L., 35 1/2"

\$200-\$300

236. Chinese Ivory Cane

Ca. 1930-Multiple people and vegetation appear in this ivory carving, large silver metal collar, ebony shaft and a metal ferrule.

H. 1 1/4" x 4 1/2", O.L. 36"

\$400-\$600

237. Polish Dance Cane

Early 20th Century-A prime example and the best made that we have ever offered, engraved blade with brass cover, ornate brass work on an oak shaft and pike ferrule.

H. 6" x 3 1/4", O.L. 34"

\$200-\$300

238. Ivory African Animal Cane

Ca. 1900-A carved ivory head with two color glass eyes, signed sterling collar, exotic wood shaft and a brass ferrule.

H. 4" x 1 3/4", O.L. 37"

\$500-\$700

239. Bamboo Sword Cane

Ca. 1935-A fine condition sword cane with a 4 sided 10 1/2" blade, gloss finish on handle and bamboo shaft, metal ferrule.

H. 4 1/2" x 6 1/2", O.L. 36"

\$300-\$500



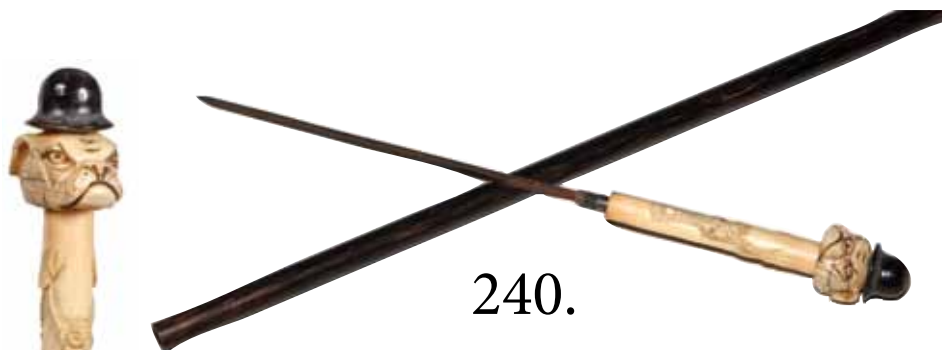
238.

239.



240. Bulldog Sword Cane

Ca. 1925-A carved bulldog with a bone derby hat, 7" 4-sided screw-in blade, exotic wood shaft and an ivory ferrule. H. 4 ¾" x 1", O.L. 36" \$300-\$500



241. American George Washington Folk Art Cane

Ca. 1865-A carved one piece root and stem with a stylized carving of George Washington and a small stopper ferrule. O.L. 37" \$200-\$400



242. Paint Decorated Folk Art Cane

20th Century-An African American caricature with glass eyes, paint and heavy varnishing, thick oak shaft and a stopper ferrule. H. 3" x 4", O.L. 34 ½" \$150-\$250



242.

243. Cigarette Container Cane

Ca. 1935-A system stick which holds 6 lucky strike sized cigarettes, by pulling the handle the patented devise releases, bamboo shaft and no ferrule. O.L. 36" \$250-\$350



241.

244. Two Folk Art Canes

Early 20th Century. O.L. 35" \$200-\$300



244.

245. Group of Five Canes

Including a Heywood Wakefield 1933 World's Fair piece, a rubber tire cane, an odd massive shaft, one frog handle and others. \$100-\$200



245.

246.



246. Large Oak Cane Stand

Ca. 1925- A large hotel oak stand for canes and umbrellas which has 64 holes but would hold three times that much due to the size of the holes, original condition and ready for use. W. 18"x 53"x H. 28"

\$500-\$1000

247. Erotic Ivory Plaque

19th Century-The best of the best. A unique ivory plaque carved with an erotic scene. Exceptional fine detail with a very high relief and intact. It is the finest erotic carving that we have offered both in style and detail-2 3/4" x 2 1/2"

\$3,000-\$5,000

247.



248. Cane Stand-Modern

A fruitwood stand with holes drilled for 16 canes. You could also put canes in the center.-19" X 11"x 11".

\$300-\$500

249. Hemès Cannes et Pommeaux Scarf

This Hemes 100% silk scarf has been worn only a handful of times and has been in its original box with ribbon for the majority of its life. It was purchased in Paris in the 1980's. While it is vintage and unique, it certainly feels and appears brand new. Original label. 34" x 34".

\$400-\$600



249.

248.



Kimball M. Sterling, Inc. (TFL-1915)
125 West Market Street
Johnson City, Tennessee 37601
kimballsterling @ earthlink.net
423.928.1471

Photography by James Price

Catalog Design by KT Design, LLC
www.kristaft.com

Member National Auctioneers Association
© Copyright 2013 Kimball M. Sterling, Inc.

