

Kimball & Victoria Sterling present a

Winter 2014

Cane Auction

Saturday, February 22nd

11:00 a.m. EST

www.AuctionAuction.com



TERMS & CONDITIONS

1. Cash or check. A 20% buyers' premium will be added to the hammer price as part of the sale price for all bidders. Internet bidders will pay 23%. We reserved the right to hold purchases until the buyers checks clears if buyer is not known by us. Bank letter of credit is acceptable.

2. Mail or phone bids are accepted; the firm may require a deposit.

3. Kimball M. Sterling, Inc. has endeavored to catalog and describe the property correctly. All property is sold as is and neither the auction company nor the consignor will be responsible for descriptions, genuineness, provenance or condition of the property. No statement in the catalog made orally at the sale or otherwise shall be deemed to be a warranty, representation, or an assumption of liability.

4. In the event of any dispute between bidders, the auctioneer shall have total discretion to determine the successful bidder, in which his determination shall be final or to re-offer and resale the article in dispute. Title of the item or items purchased by the bidder will pass at the fall of the gavel and declaration of bidder. This is not an approval auction. All measurements are approximate.

5. Principal auctioneer: Kimball M. Sterling #2467. B. Elizabeth Sterling, auctioneer # 5757. Firm Kimball M Sterling Inc. TFL-1915

6. Bidders may bid live on the Internet by visiting <http://www.auctionauction.com>. You may also view the auction at this site and bid by phone.

7. Communications:
Telephone 423-928-1471.
Fax 423-928-2816.
Cellular 423-773-4073, 423-773-4072.
Email kimballsterling@earthlink.net

8. Kimball M Sterling has worldwide shipping available. We do not ship protected items overseas but can put you in contact with a source that is very reliable and can handle all of your needs.

9. Kimball M. Sterling, Inc. will not be held responsible for bids received on the day of the auction, unexecuted absentee bids, phone bidders not contacted or slow Internet bids. Although we do attempt to get all bids executed problems do occur. There will be no recourse from the bidder. We will not be responsible for items left on our location for over 30 days.

10. Sale will be conducted at 125 West Market Street, Johnson City, Tennessee. 37604. Announcements day of the sale take precedence over pre-sale advertising. Any litigation that pertains to this auction will be conducted in the county of Washington in Tennessee and is agreed upon by registering for this auction.

11. Airport is the Tri-Cities Airport, which is approximately 20 miles from the gallery. Internet catalog and live bidding available at www.auctionauction.com Best Western Hotel: 423-282-2126. A very fine hotel which offers Sterling Auction a discount rate is the Carnegie Hotel 1216 W State of Franklin Rd, (423) 979-6400.

12. Please call for condition report on sale lots or email us. We do send out multiple photos by email of any lot in the auction. By registering for this auction you accept the terms.

13. Parking service is free.



Kimball & Victoria Sterling present a
Winter 2014
Cane Auction
Saturday, February 22nd
11:00 a.m. EST

Live on the internet at
LIVEAUCTIONEERS.COM
Two Time Winner of Best of Show
from the National
Auctioneers Association

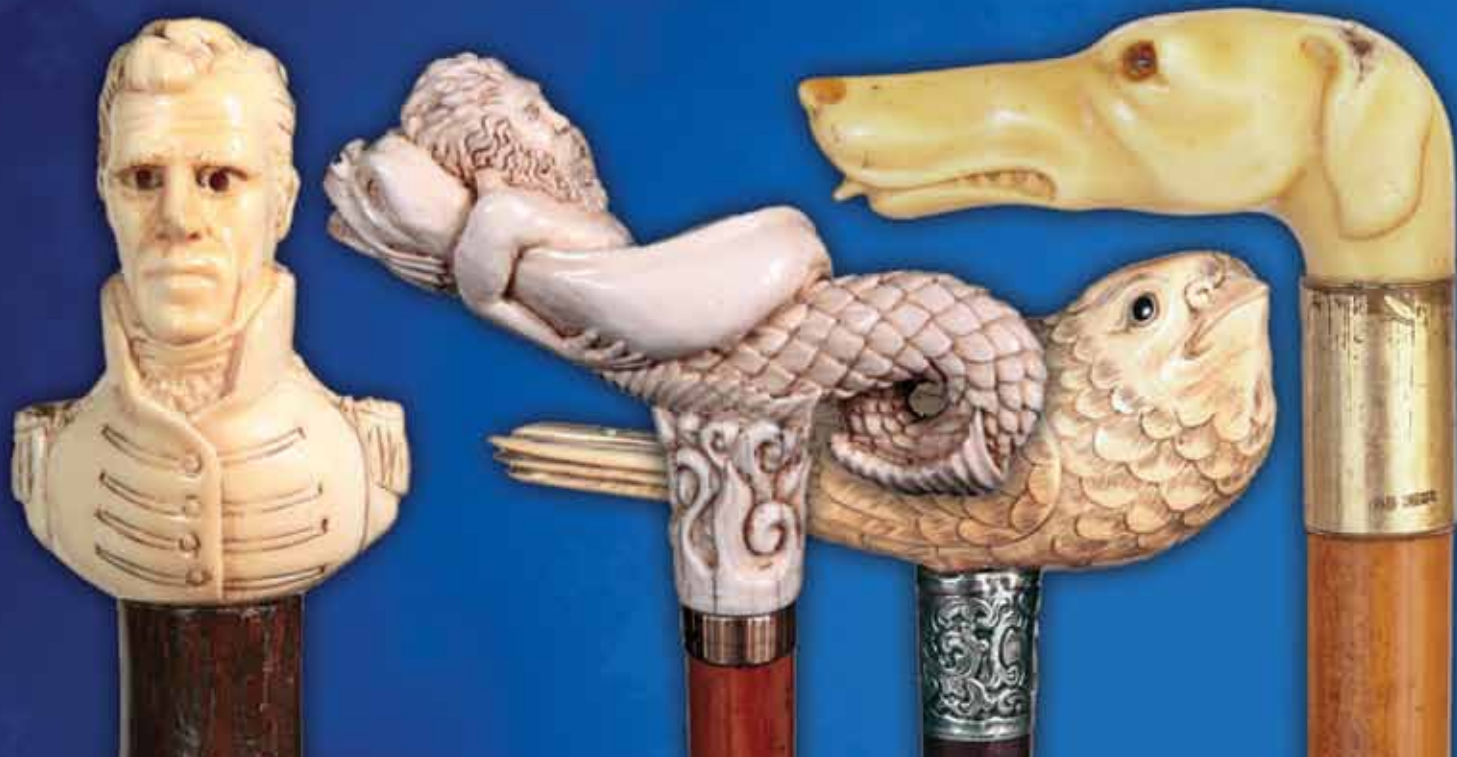
Kimball M. Sterling Auction Gallery
125 West Market Street
Johnson City, Tennessee 37601
kimballsterling@earthlink.net
423.928.1471

www.AuctionAuction.com

Preview:
Anytime before the auction by appointment

Friday, February 21st
Noon until 5:00 p.m.

Saturday, February 22nd
9:00-11:00 a.m.



1. Ivory Cat Cane

Ca. 1900-Opera shaped ivory handle carved with a cat head at the front, wide and finely chased silver collar, ebony shaft and a horn ferrule. This cane strikes the essence of cat portraiture and brings up the feline personality in a lovable way. H. 4 ½" x 1 ½", O.L. 36"

\$1,000-\$1,500

2. Ivory Figural Art Nouveau Cane

Ca. 1900-Large ivory crook handle carved with two fish among seaweed depicted facing one another. The detail is naturalistic and very fine and accented by dark tortoiseshell inlay in the eyes. Snakewood shaft with a wide and elaborately chased silver collar struck with British hallmarks and a brass ferrule. H. 4 ½" x 3", O.L. 36 ¾"

\$1,500-\$1,800

3. Nephrite Dress Cane

20th Century-The substantial jade ball handle of a deep spinach green color, plain silver collar with English hallmarks, dark rosewood shaft and a horn ferrule. H. 2" x 2", O.L. 38 ½"

\$600-\$800

1.



2.



3.





4.

4. Ivory Dog and Hare Cane

Early 1900s-Horizontal ivory handle carved with a dog running after a hare, well chased silver collar, ebony shaft and a horn ferrule. H. 4 ¼" x 36 ¾", O.L. 37"
\$900-\$1,200

5. Dog Day Cane

Ca. 1900-Well carved oak dog head with folded ears and shorter muzzle flanked by a pair of straight forward looking inset glass eyes, beautiful silver collar in the shape of a belt with buckle struck with Birmingham hallmarks, varnished hardwood shaft and a metal ferrule. H. 2 ½" x 2 ¼", O.L. 36 ¼"
\$600-\$800

6. Ivory Cat Cane

Ca. 1900-Ivory pistol-grip handle carved with a cat portrait, well veined rosewood shaft with a silver collar and a stag horn ferrule. H. 2 ½" x 2", O.L. 37 ¼"
\$1,000-\$1,500

6.

5.



7. Victorian Dog Cane

Circa 1880-Massive silver handle naturalistically modeled, cast and finely chased in the shape of a pointer with long hair and buckle collar on its ebony shaft with a metal ferrule. Long integral collar with beaded ring and engraved initials. H. 3" x 2". O.L. 34 ½"
\$700-\$900

7.



8. Ivory Elephant Cane

19th Century-Substantial ivory circus elephant seated with a long trunk hanging between the front paws. Unusual fine detail to the face of the bulk animal and its rough skin as well as to its short tail. Ebony shaft with a slim turned ivory collar and an ivory ferrule.

H. 4 ¼" x 2 ½", O.L. 38"

\$2,500-\$3,500

9. Boxwood and Ivory Tiger Cane

Ca. 1900-A substantial boxwood tiger head with all its powerful features, including long whiskers, ivory sharp teeth and inset glass eyes. Well chased silver collar, ebony shaft and a horn ferrule.

H. 2" x 2", O.L. 36 ¾"

\$700-\$900

10. Native Art Marine Cane

Ca. 1900-L-shaped walrus ivory handle carved to depict a stylized seal on a vertical plinth, plain silver collar, rosewood shaft and a horn ferrule. North West Coast. H. 5 ¼" x 2 ½", O.L. 36 ½"

\$600-\$700



8.

10.



9.



11.

11. Figural Day Cane

Ca. 1900-Large flamed lemonwood handle carved to depict what seems to be a catfish with the prominent barbells, well figured scales and inset glass eyes, ebony shaft with a plain silver collar and a horn ferrule. H. 5" x 2 1/2", O.L. 37 1/4"
\$600-\$700



12.

12. Figural Marine Cane

Ca. 1880-Sperm killer whale tooth carved with a seaman portrait, faux sprig hardwood shaft with metal eyelets and a metal ferrule. Russian origin. H. 3 3/4" x 1 1/2", O.L. 35 1/2"
\$800-\$1,000

13. Commemorative Marine Cane

Dated 1861-Ivory handle in classic Opera shape carved with a whale on one side and a shield inscribed "J.W.R 1861." on the other. There is an anchor on the front and a star on the back. Malacca shaft with a silver collar and worn out ferrule. H. 4 1/2" x 1 1/4", O.L. 32 1/2"
\$1,000-\$1,400



13.

14. Albatross Day Cane

Ca. 1920-Boxwood albatross head with the characterizing large hooked beak and nasal tubes. Ebony shaft with a metal collar and a metal ferrule. H. 4" x 2 1/4", O.L. 37 1/2"
\$400-\$500



14.

15. Duck Head Cane

Ca. 1880-Ivory handle naturalistically carved as a duck head with a long and wide beak and a well figured and polychrome feather coat with two large and inset glass eyes. Ebony shaft with silver collar and a horn ferrule. Typical for Brigg London. H. 2 ½" x 1 ½", O.L. 35 ½"
\$800-\$1,000

16. Red Jasper Dress Cane

Early 20th Century-Brick red Milord knob with crystallized, natural grey veins, ebony shaft with a metal collar and a horn ferrule. H. 3 ½" x 1 ¼", O.L. 37 ¾"
\$400-\$500

17. Ivory Figural Day Cane

Ca. 1890-Ivory Opera shaped handle carved with an otter like webbed foot mammal showing a slim body with a thick and smooth fur, ebony shaft with a well chased silver collar and a horn ferrule. H. 4 ½" x 1 ½", O.L. 36 ¼"
\$900-\$1,200

18. Rosewood Frog Cane

Ca. 1900-Squatting amphibian perched on a leaf with clamping legs to secure its balance. Rosewood shaft with plain metal collar and a horn ferrule. H. 3" x 1 ¾", O.L. 36 ½"
\$600-\$800

16.



15.



18.

17.



19.



19. Asian Ivory Dress Cane

Ca. 1890-Ivory knob with a dragon in the clouds, ebony shaft with a silver collar and a horn ferrule. Quality high relief and intricate carving. H. 2 ¾" x 1", O.L. 37 ¼"

\$600-\$800

20. Whimsical Man Ebony Dress Cane

Ca. 1880-Could be a clown or just a man of the street, ivory inlay and glass eyes, ebony shaft with a silver collar and a horn ferrule. H. 3 ¼" x 2 ¼", O.L. 37"

\$600-\$800

21. African American Folk Art Cane

Mid 20th Century-A carved stag handle with polychrome paint of a young boy catching an alligator by his tail, signed sterling collar, rich mahogany shaft and a brass ferrule, quality carving. H. 6" x 2 ¾", O.L. 36"

\$1,800-\$2,200

20.

22. Pig Ivory Nude

Mid 20th Century-A finely carved ivory boar tusk, signed sterling collar, exotic wood shaft and an ivory ferrule. H. 5" x 2", O.L. 36"

\$800-\$1,200



21.



22.

23. Art Deco Ivory Dress

Early 20th Century-A hallmarked and signed sterling handle with a 2" ivory spacer, mahogany shaft and a horn ferrule. H. 3 ¾" x 2", O.L. 35"
\$350-\$500

24. Ivory Dress Cane

Ca. 1890-A nice example with an ornate gold filled end cap and collar, step bamboo shaft and a metal ferrule. H. 5" x 1 ½", O.L. 33"
\$300-\$400

25. Ivory Triton Dress Cane

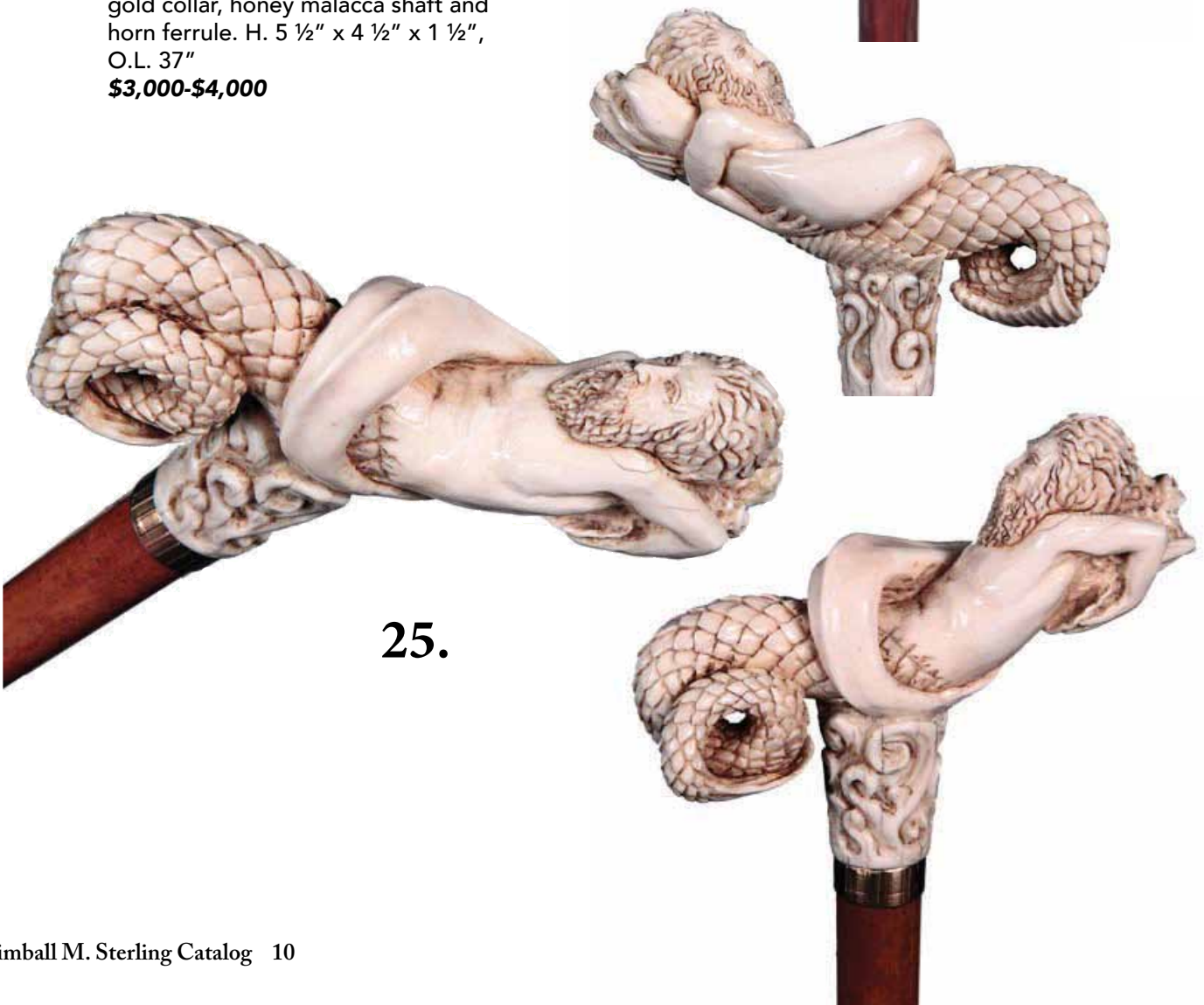
20th Century-Neptune's son never looked so good as he is presented in this fine carving, facial details are dramatic as is the muscular body structure of this carving, signed 14kt gold collar, honey malacca shaft and horn ferrule. H. 5 ½" x 4 ½" x 1 ½", O.L. 37"
\$3,000-\$4,000



23.



24.



25.



27.

26. Silver Niello Dress Cane

Ca. 1860-A nice early example of this type of metal smithing, hallmarked but unreadable collar, malacca shaft and a 4" brass ferrule. H. 4" x 3", O.L. 36"

\$400-\$600

27. Carved Airedale Cane

Ca. 1930-A whimsical but fine carving with two color glass eyes, signed sterling collar, hardwood shaft and a staghorn ferrule. H. 3 1/2" x 5", O.L. 36"

\$500-\$600

28. Alligator Folk-Art Cane

Ca. 1930-A one-piece orange tree shaft with a Jacksonville gator atop and also one on the side, original finish and a metal ferrule. H. 5 1/2" x 2", O.L. 36"

\$300-\$500

29. Silver Boar and Dog Dress Cane

Mid to Early 20th Century-Sand cast silver handle, British hallmarked collar, ebonized shaft and a staghorn ferrule. H. 4" x 1 1/2", O.L. 36"

\$350-\$450



28.



26.



29.

30. Japanese Staghorn Monkey Cane

Ca. 1900-A carved horn handle with two primates playing and picking fruit, signed sterling collar, honey malacca shaft and a worn horn ferrule. H. 4 $\frac{3}{4}$ " x 1 $\frac{7}{8}$ ", O.L. 35"
\$500-\$700

30.



31. Memento Mori Ivory Cane

Early 20th Century-A nicely carved ivory handle with a screech owl, skull and ladies portrait, signed sterling collar, thick mallaca shaft and a horn ferrule. H. 1 $\frac{3}{4}$ " x 3 $\frac{3}{4}$ ", O.L. 36"
\$2,000-\$3,000

31.



32. Ivory Racehorse Derby Cane

Ca. 1925-A carved ivory horse with two color glass eyes, silver bridal, silver metal collar, exotic hardwood shaft and a metal ferrule. H. 4 $\frac{1}{2}$ " x 1 $\frac{1}{2}$ ", O.L. 36"
\$1,400-\$1,800

32.





33.

34.

33. Bulldog Crutch Dress Cane

Ca. 1900-A hardwood crutch handle with an ivory bulldog, carved to appear as if it is passing through the cane, the head is shown on one side and the back feet on the other, signed sterling collar, hardwood shaft and a horn ferrule.

H. 5" x 4", O.L. 36"

\$400-\$500

34. Art Nouveau Ivory and Silver Dress Cane

Ca. 1860-A nice silver metal overlay with grapes and leaves, ivory center, stepped partridge wood shaft and a 3" iron ferrule.

\$600-\$700

35. Stag Dragon Dress Cane

Early 20th Century-A carved staghorn dragon of sorts, attached with a silver metal tree trunk, exotic wood shaft and a horn ferrule. H. 5 1/4" x 3 1/4", O.L. 37"

\$600-\$700

36. Fox Hunter's Silver Dress Cane

Ca. 1900-A detailed signed .800 silver casting of the hunt, comical due to the dog being stuck in the tree and the sly fox looking down at him, British hallmarks, thick malacca shaft and a metal ferrule.

H. 5" x 3", O.L. 37"

\$1,000-\$1,200



36.



35.

37. Exotic Bird Dress Cane

Ca. 1890-A very fine casting of a strutting bird in unmarked 800 silver, silver metal collar, bamboo shaft and a metal ferrule. H. 5 ½" x 2 ¾", O.L. 37"

\$1,000-\$1,500



38. Dartmouth College Cane

20th Century-A nice carved Indian with various names on the shaft and a horn ferrule. H. 4" x 2 ¼", O.L. 36"

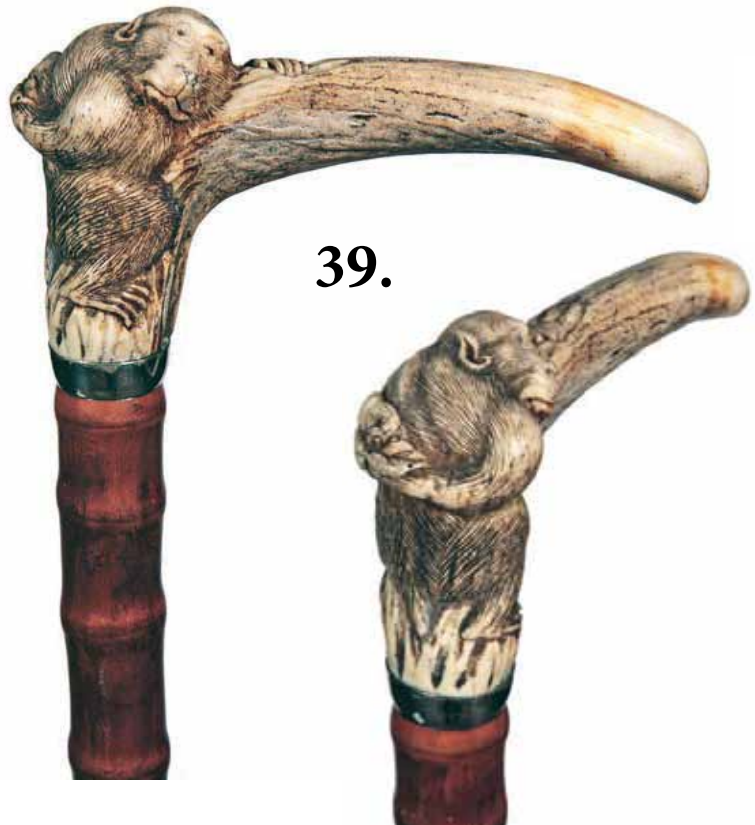
\$250-\$350



39. Japanese Stag Monkey Cane

Ca. 1890-A very nicely carved ape holding an apple behind its back with inset horn eyes, silver metal collar, bamboo shaft and a metal ferrule. H. 5 ½" x 2 ¾", O.L. 34"

\$650-\$800



40. Ivory and Gold Dress Cane

Art Deco-An ivory handle with an unmarked small gold collar, ebony shaft and a horn ferrule. H. 1" x 1", O.L. 35 ½"

\$250-\$350





41. Cast Iron Victorian Cane Stand

Ca. 1870. 10", W. 10"
\$300-\$500

42. Large Mission Oak Stand

Ca. 1925-A large hotel oak stand for canes and umbrellas which has 64 holes but would hold three times that much due to the size of the holes, original condition and ready for use. W. 18"x 53"x H. 28".
\$800-\$1,200

43. Ivory Nude Cane

Ca. 1890-Large ivory handle carved to depict a beauty captured in a relaxed instant gracefully embracing the handle itself. Although she seems submerged in her thoughts and looking into the distance, her eyes with a dreamy expression engage instantly the viewer in a passionate visual dialog. Inspired by the Symbolist paintings of the period, the handle is most likely French and in the taste of the fin de siècle. H. 5" x 2", O.L. 34 1/2"
\$4,000-\$5,000

43.



42.



41.



44. Porcelain Dress Cane

Ca. 1880-Large porcelain handle modeled in the Baroque taste with the head of a woman at the front. The body is painted with opulent flowers in vivid colors and richly embellished with raised gold moriage. The head itself, with frilled collar and bonnet, is delicately modeled and finely painted in pastel colors. Bahia rosewood shaft with metal collar and a horn ferrule. German KPM Berlin (King Porcelain Manufacture) grand class quality. H. 5 ¼" x 3 ¼", O.L. 36 ¼"

\$1,400-\$1,800

44.

**45. Ivory Erotic Cane**

19th Century-Ivory knob fashioned in the stylized shape suggesting the leg of a woman with bent knee, garter and stockings, malacca shaft with ivory eyelets and braided dark silk loop with tassel and an ivory ferrule. The front of the knob is carved in low relief with a discreet panel, showing a sex panel with a woman involved with two men on a trefoil leaf, subtly suggesting a "Menage a Trois" French origin. H. 2 ¾" x 2 ¼", O.L. 37 ½"

\$1,200-\$1,600

45.



46.

46. Meissen Porcelain Dress Cane

Ca. 1880-Porcelain knob well modeled and naturalistically colored painted to depict the head of a beauty with an opulent hairdo. Rosewood shaft with a gilt metal ring collar and a horn ferrule. Top rate Meissen quality, signed. Meissen porcelain is the first European porcelain in 1708. H. 2" x 1 ½", O.L. 36 ¾"

\$800-\$1,000



47.



49.



47. British Erotic Cane
Late 19th Century- Very unique erotic ivory ball knob with delicate carving and incredible miniature, lace-like detail, ebony shaft, plain silver collar with Birmingham hallmarks and a horn ferrule. A one-of-a-kind erotic which has that touch of eccentricity. H. 2" x 2", O.L. 38 1/4"
\$1,200-\$1,600

48. Meissen Porcelain Dress Cane
Ca. 1890-The porcelain knob is modeled in a sober classic crown shape with raised scrolls and shells and an integral beaded collar all embellished in pastel colors with scattered flowers and gold moriage. The shaft is deep black ebony with a horn ferrule. H. 1 3/4" x 1 1/4", O.L. 36 1/2"
\$700-\$900

50.



49. Ivory Day Cane
Ca. 1880-Ivory knob carved with three street musicians, malacca shaft with a plain silver collar and a stag horn ferrule. The "STERLING SILVER" hallmark on the collar hints to an American origin. H. 2" x 1 3/4", O.L. 38 1/4"
\$900-\$1,200

48.



50. Figural Silver Cane
20th Century-A well-cast silver bust of a beauty wearing all her attire and with a pretty hairdo and impressive and large feathered hat, ebony shaft and a brass ferrule. Birmingham hallmarks. H. 4" x 2", O.L. 36 3/4"
\$700-\$900

51. Ivory Portrait Cane

Ca. 1890-Ergonomically shaped ivory Opera handle with a long haired woman face at the front, malacca shaft with a plain silver collar, silver eyelets and a brass ferrule. H. 4 1/4" x 1 3/4", O.L. 35 3/4"

\$700-\$900

52. Piqué Dress Cane

20th Century-Ball knob on a segmented shaft lavishly embellished with dense silver piqué and twisted gold wire inlay. Extremely decorative, unused cane. H. 4 1/2" x 2", O.L. 37 1/2"

\$500-\$700

53. Noh Masks Ivory Cane

Ca. 1890-Japanese export ivory handle carved with four rows of Noh Masks accolated to one another in various sizes and with different expressions. Ebony shaft with a plain silver collar and a missing ferrule. Rarely seen in such a large size and with similar fine detail. H. 3 3/4" x 1 1/4", O.L. 38"

\$800-\$1,000

54. Toledo Dress Cane

Ca. 1900-Remarkable Opera steel handle with long stem and 24 karat gold inlay in the Egyptian Revival taste, hardwood shaft and worn out ferrule. Very rare Spanish Toledo handwork and with its entire fine detail. H. 6" x 4", O.L. 36"

\$400-\$500

53.

51.

52.

54.



55.

55. Memento Mori Ivory Cane

19th Century-Opera shaped ivory handle throughout carved with human and animal skulls as well as skeleton bones, lizards and snakes. Malacca shaft with a metal collar and a stag horn ferrule. Russian. H. 4" x 1 1/2", O.L. 38 1/4"

\$2,500-\$3,500

56. Wine Related Folk Art Cane

Ca. 1900-Large hardwood oval loop handle carved with wine leaves and grapes highlighted with a greenish color, oak shaft with a white metal collar and worn out ferrule. Traditional French cane worn mainly in the wine harvest feasts and parades. H. 8" x 4 1/4", O.L. 37 1/2"

\$400-\$500

57. Ivory Horse Cane

Circa 1880-Stretching pistol grip handle with a graceful trotting horse, malacca shaft and an ivory ferrule. The tiny horse is micro carved in a remarkable, high relief and with extraordinary fine detail. H. 5 1/2" x 2", O.L. 32 3/4"

\$1,000-\$1,200

57.



56.

58. Dog Countryside Cane

Ca. 1900-Well carved fruitwood dog head with long floppy ears and longer muzzle flaked by a pair of straight forward looking inset glass eyes, plain silver gilt collar with Birmingham hallmarks, golden ash branch shaft and a metal ferrule.

H. 3" x 2 3/4", O.L. 39 1/2"

\$600-\$800



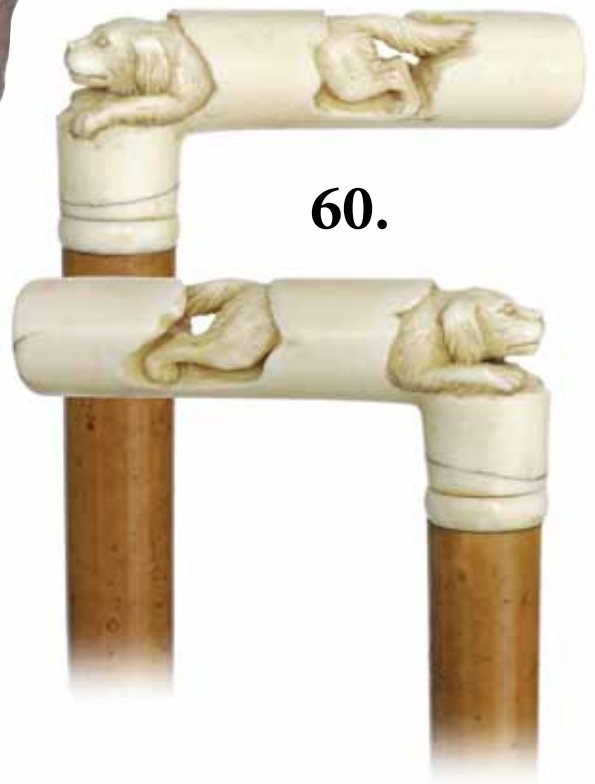
58.

59. Satirical Ivory Dog Cane

Ca. 1890-Ivory handle carved to depict a humanized dog dressed as a gentleman with a formal suit and riding cap. Ebony shaft with a wide silver gilt collar with obscured hallmarks and a horn ferrule.

H. 2 3/4" x 2", O.L. 39 1/4"

\$800-\$1,000



60.

60. Ivory Dog Cane

Late 19th Century-L-shaped ivory handle carved with a crouching dog, the head over its front paws at the front and back part with tail on the rear to give the impression that the canine goes through the handle, malacca shaft and a horn ferrule. Charming. H. 4 1/4" x 2", O.L. 36 1/2"

\$700-\$1,000



59.

61. Ivory European Soldier Cane

Ca. 1885-A carved ivory handle of a Roman soldier in helmet with plume, ornate bell bronze collar, brown malacca shaft and a stag ferrule.

H. 4 3/4" x 2", O.L. 35 1/2"

\$500-\$600



61.

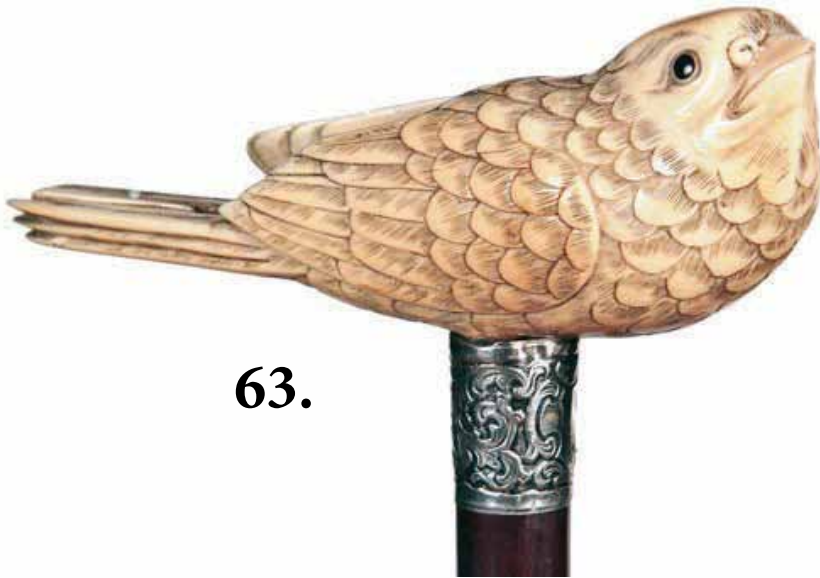


62.

62. Ivory Whippet Cane

Ca. 1920-A nice Art Deco carving with two color glass eyes, ornate unsigned gold collar, honey malacca shaft, minimum damage to lower part of right ear and a 2" horn ferrule. H. 4 1/2" x 1 3/4", O.L. 33 3/4"

\$600-\$800

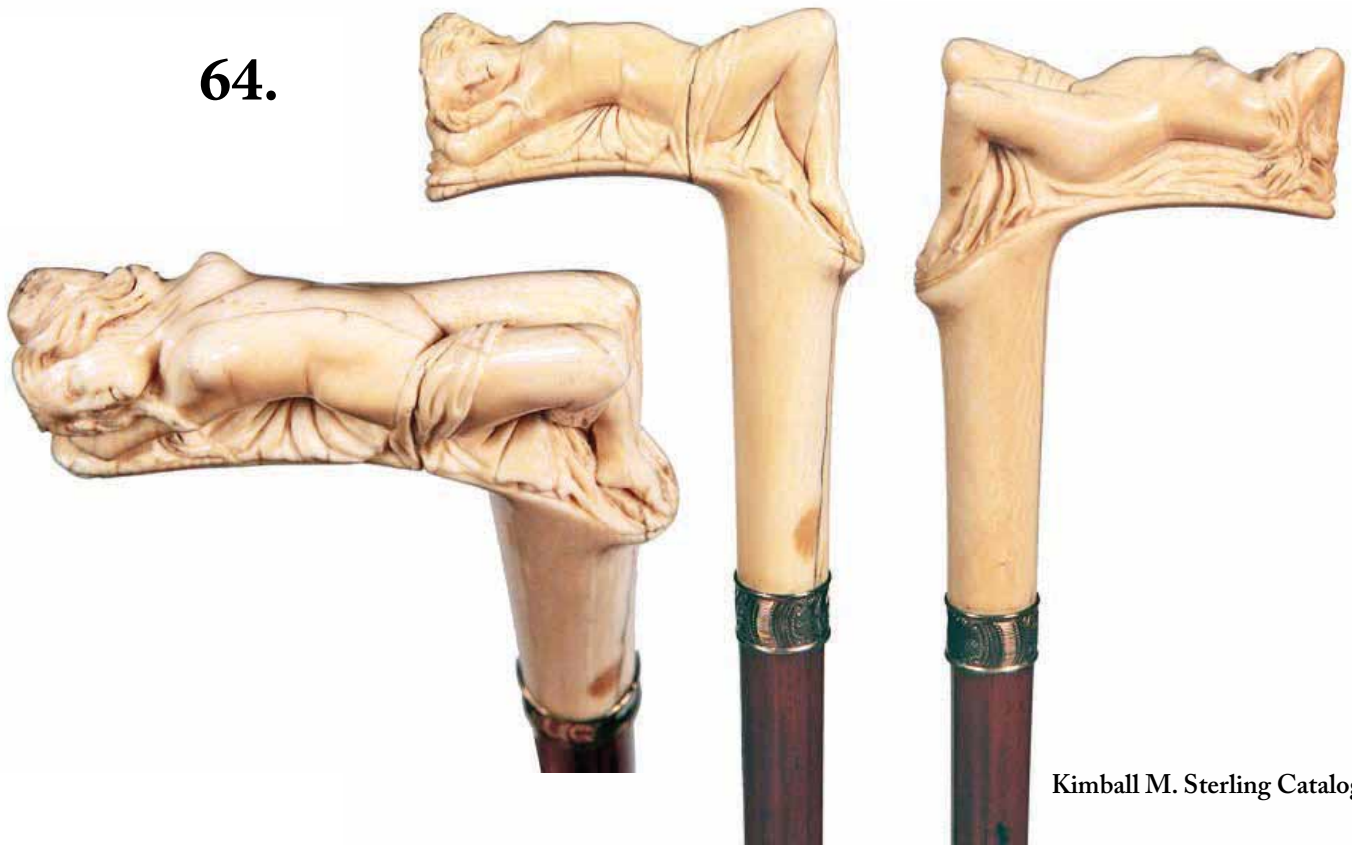


63.

63. Ivory Song Bird Cane

Ca. 1900-A large and impressive carving with two color glass eyes, heavy feather detailing, ornate signed sterling collar, the tip of the right wing has been broken off but has been smoothed out by a professional and is very unnoticeable, hardwood exotic shaft and a worn horn ferrule. H. 6" x 2" x 2", O.L. 35 1/4"

\$1,500-\$2,000



64.

64. Ivory Nude Carving

Ca. 1885-A European classical nude carving of a smiling lady, carving is detailed work by a master artist, ornate inscribed gold-filled collar, malacca shaft, small chip to left elbow but has been worn smooth over the years (very unnoticeable) and a horn ferrule. H. 3" x 4 1/2", O.L. 35"

\$1,500-\$2,500

65. European Ivory Nude

Ca. 1880-A superb ivory carving of a reclining nude, best of the best, perfect proportions, flowing hair, wrist and neck jewelry, silver metal collar, exotic wood shaft and a metal ferrule. H. 4" x 2 1/2", O.L. 36"

\$3,500-\$4,500

66. Ivory Talon/Egg Cane

Dated 1883-A most impressive carving of this subject matter, the artist showed his love for the art as he did every detail in this cane, India inked "Chas. Mitchell Jr., Nashville. TENN 1883", signed sterling collar, exotic wood shaft and a metal ferrule. H. 5" x 2" x 2", O.L. 38 1/2"

\$1,200-\$1,800

67. Nautical Whalebone Cane

Ca. 1865-Whale's tooth handle attached with a coin silver stud to a whalebone stepped half hexagonal shaft, carved eyelets and no ferrule. H. 1 1/4" x 5/8", O.L. 32 1/2"

\$700-\$1,000





68.

68. Ivory and Gold Dress Cane

Ca. 1885-An ornate fossilized ivory handle with a large gold-filled end cap, matching ornate gold-filled collar, shaft is a stacked paper disc with a center rod which had been ebonized and a 2" metal ferrule. H. 4 ½" x 1 ¼", O.L. 33"

\$400-\$600

70.



69. Victorian Ivory Portrait Cane

Ca. 1875-Carved ivory handle with a high relief portrait, British hallmarked coin silver collar, thick malacca shaft and a horn ferrule. H. 2 ¼" x 2 ½", O.L. 36"

\$400-\$600



69.

70. Rare Nautical Baleen Defensive Cane

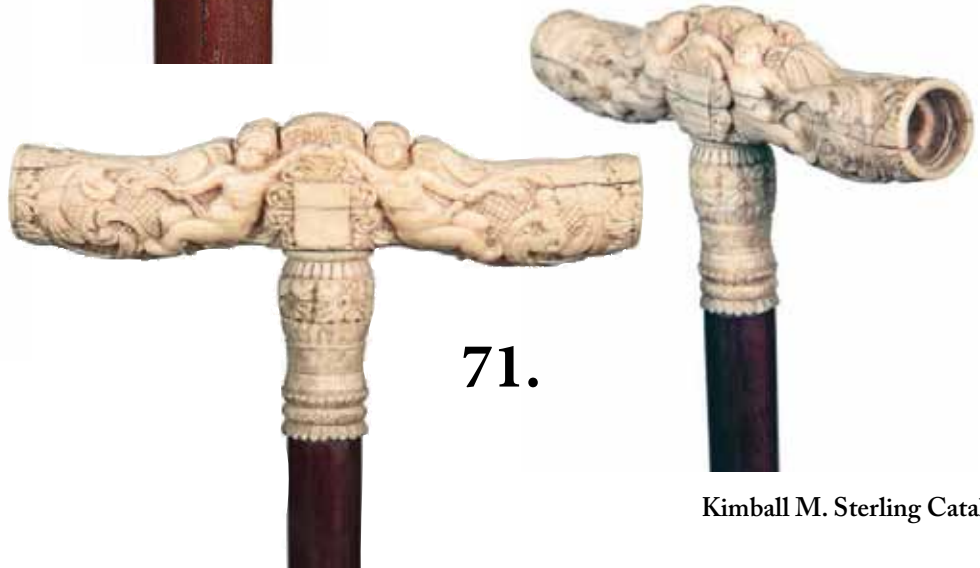
Ca. 1865-A very rare and hard to find example with a baleen wrapped Turk's knot upon a heavy piece of lead, woven baleen collar, baleen shaft and a small horn ferrule, minor damage to the Turk's knot but very expectable. H. 1 ½" x 1 ¾", O.L. 34"

\$2,000-\$3,000

71. Putti Ivory Dress Cane

Ca. 1880-An ornate carved ivory handle which could possibly also double as a cheroot handle, the carver paid very close attention to detail throughout this cane, average ivory striations but not annoying, micro carved ivory collar, rich mahogany shaft and a horn ferrule. H. 4 ¼" x 1 ½", O.L. 35"

\$700-\$900



71.

72. Japanese Ivory Carved Cane

Ca. 1890-Three mice with horn eyes playing with leafs and grapes, nice detailed work on both front and back, signed sterling crown collar, exotic wood shaft and a horn ferrule. H. 4" x 1 1/4", O.L. 36"

\$600-\$800

73. Ivory Bulldog Cane

Ca. 1890-A nicely carved bulldog with amber eyes, British hallmarked coin silver collar, thick malacca shaft and a horn ferrule. H. 2 1/4" x 1 1/4" x 1 3/4", O.L. 36"

\$600-\$700

74. Ivory Horse Cane

Ca. 1900-A European carving in high relief of a large muscular horse, exotic wood shaft and a horn ferrule.

H. 2 1/2" x 1 1/4", O.L. 35"

\$500-\$600

75. Ivory Hound Dog Dress Cane

Ca. 1885-A good looking ivory dog, ornate hallmarked coin silver collar, hardwood shaft and a metal ferrule.

H. 4" x 2 1/4", O.L. 36"

\$600-\$700

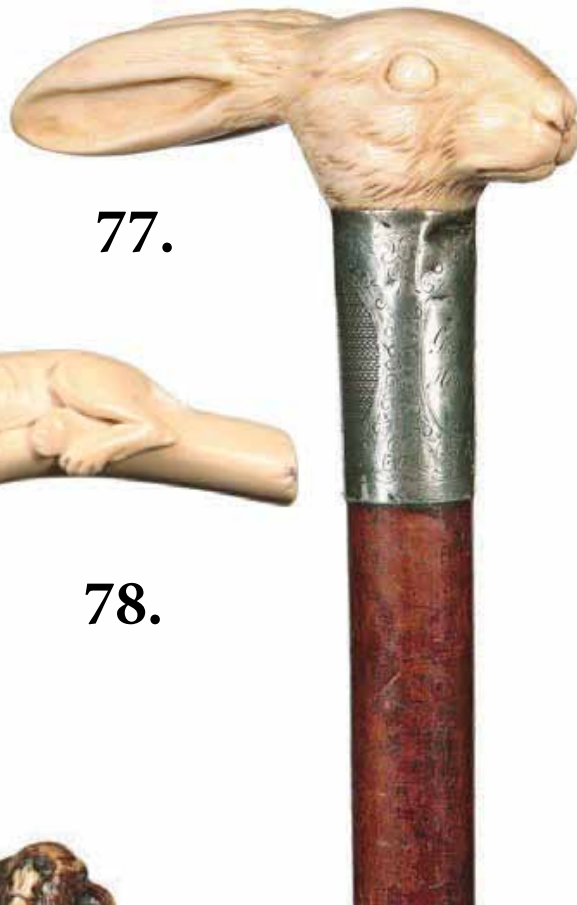
76. Japanese Stag Cane

Ca. 1890-Hear-see-speak no evil monkey cane, signed by three red oriental characters, silver metal collar, faux bamboo partridge wood shaft and metal ferrule.

H. 5 1/2" x 1 1/2", O.L. 38 1/2"

\$700-\$900





77.

77. Ivory Rabbit Cane

Ca. 1880-A stylized carved ivory rabbit, ornate silver metal presentation collar, malacca shaft and a metal ferrule. A premium carving suitable for any collection. H. 4 1/4" x 1 3/4", O.L. 33 1/2"

\$800-\$1,000



78.

78. Ivory Bulldog Cane

Ca. 1925-A nice whimsical carving of a bulldog with two color glass eyes resting atop the handle, unusual signed sterling presentation collar, rich snakewood shaft and a metal ferrule. H. 5" x 1 1/2", O.L. 33 1/2"

\$500-\$700



79.

79. Japanese Staghorn Monkey and Frog Cane

Ca. 1890-A whimsical ape looking down upon a large bullfrog ready to leap, signed on rear with Japanese characters, signed sterling collar, stepped partridge wood shaft and a metal ferrule. H. 4" x 1", O.L. 34"

\$400-\$500



80.

80. Andrew Jackson Ivory Cane

Mid 19th Century-An unusual carving of the Tennessean president "Old Hickory" himself in his uniform, hickory twigs spur shaft with ivory attachments on the spurs, 3" copper ferrule. H. 2 1/2" x 1 3/4", O.L. 36"

\$1,200-\$1,500

81. Art Deco Ivory Dog Cane

Ca. 1925-A massive ivory whippet or greyhound with two color glass eyes, fine detail work throughout the entire handle, signed sterling collar, unique twigspur custom snakewood shaft and a 3 1/4" metal ferrule.

H. 5" x 1 7/8" x 1 5/8", O.L. 35 1/2"

\$1,000-\$1,500



81.

82. Deck Hand Ivory Cane

Ca. 1885-A whimsical character carving of a gentleman with his head wrapped and his wrinkles carved precisely, unusual diamond cast silver collar, malacca shaft and a horn ferrule.

H. 3 1/4" x 2 1/2" x 3 1/4", O.L. 36"

\$800-\$1,200



82.

83. Exotic Bird Sword Cane

Dated 1905-A carved horn handle of an exotic bird with great details, two color glass eyes, push button 28" signed Toledo locking blade, exotic wood shaft and a mixed horn ferrule.

H. 4" x 2", O.L. 36"

\$2,000-\$2,500



83.





84.



84. Nathan Bedford Forest Ivory Sword Cane

Ca. 1885-A unique Confederate Veteran's cane which is unmarked but has family oral legend , a high relief carving of General Forest in his uniform with unidentifiable flags in the background, ornate gold filled collar, pushbutton 9 1/4" 4-sided dagger with blood grooves, gold metal collar, malacca shaft and a brass ferrule. H. 3 1/2" x 5", O.L. 35" **\$2,000-\$2,500**

85.



85. Battle of Lake Erie Cane

Dated 1886-Ornate gold-filled handle engraved "Adam Muller 1886", oak shaft with an attached period tag stating that the wood used was from the flagship Lawrence of Admiral Perry in the war of 1812, nice original condition and a brass screw off ferrule. H. 1 1/2" x 1 3/4", O.L. 34 1/2" **\$1,500-\$2,000**



86.



86. Victorian Sword Cane

Ca. 1875-A unique Gutta Percha handle with an applied ivory lion with red and black eyes, belt buckle frame surrounds the lion, silver metal ferrule, 10" 2 sided sword blade which works by friction, exotic wood shaft and a metal ferrule. H. 4" x 7", O.L. 36" **\$1,000-\$1,500**

87. Elephant Balance Ivory Cane

Early 20th Century-An unusual subject matter of an elephant balancing an ivory ball, the eyes have little baleen insets and it appears to be a one piece carving, nice scaling on the trunk and detail work on the ears, zebra wood shaft and an ivory ferrule. H. 6 1/2" x 1 3/4", O.L. 36"

\$1,000-\$1,500

88. Ivory Parrot Dress Cane

Ca. 1875-A high relief carved exotic parrot with two color glass eyes sitting on a twigspur perch, signed sterling collar, rich snakewood shaft and a large metal ferrule. H. 5 1/2" x 2", O.L. 36"

\$600-\$800

89. Art Deco Ivory Dog

Ca. 1925-A nicely carved whippet or greyhound of this period with two color glass eyes, British hallmarked coin silver collar, twigspur shaft with ivory inserts on the spurs and a metal ferrule. H. 4 1/2" x 1 1/2", O.L. 36"

\$700-\$1,000

90. Art Deco Ivory Dog

Ca. 1925-A nicely carved whippet or greyhound of this period with two color glass eyes, silver metal collar, mahogany shaft and a staghorn ferrule. H. 4 1/2" x 1 1/2", O.L. 38"

\$600-\$800



89.



87.



88.



90.



91.

92.



91. Japanese Ivory Dress Cane

Ca. 1890-A large mushroom shaped Japanese export elephant ivory handle carved with Chrysanthemums, malacca shaft and a metal ferrule. The buds with opulent leafage are magnificently rendered. A clear signature.

H. 3 1/4" x 2", O.L. 35 1/2"

\$900-\$1,200

92. Early Dual Purpose Cane

First half of the 19th Century-Silver container handle with a deep cavity for storing tobacco under a hinged flipping lid engraved with the initials "E.H.H." with a makassar ebony shaft and a matching silver ferrule. H. 3" x 2 1/4", O.L. 37 3/4"

\$700-\$900

93. Ivory Mascot Cane

Ca. 1900-Straight and long ivory handle carved with a dragon in the clouds, rosewood shaft and a stag horn ferrule. The encircling fabled animal, with a scaled reptilian body, mighty paws and strong claws, has the usual large and frightening head with horns and long whiskers and an air puff suggesting a fiery breath. Mother of pearl inlay in the eyes.

H. 8" x 3/4", O.L. 37 3/4"

\$600-\$800



93.

94. "En Tous Cas" Silver Umbrella

Ca. 1890-Large and well-proportioned Derby silver handle with a hammered surface, ebony stem and slender umbrella with perfectly working steel mechanics and renovated black silk covering. The knob is struck with various Viennese hallmarks and a G.A.S. maker's stamp for the celebrated Georg Adam Scheid.

H. 4 ½" x 2 ½", O.L. 36"

\$500-\$700



94.

95. Silver Dress Cane

Ca. 1890-L-shaped silver handle with a hammered surface, ebony shaft and a metal ferrule. Viennese. Tiny secured crack on the inner curve of the handle and in need of polishing. H. 4" x 2 ½", O.L. 34 ¼"

\$300-\$400



95.

96. Boxwood Whippet Cane

Ca. 1920-Stylized carved boxwood whippet head handle with floppy ears and inset large and dark glass eyes, metal ring collar, makassar ebony shaft and a brass ferrule.

H. 3 ¼" x 1 ¾", O.L. 36 ½"

\$300-\$400



96.



97.

97. Ivory Day Cane

Ca. 1880-L-shaped ivory handle with a hunting allegory showing a well-bred pointer head in a framing hunting horn against a background with oak leaves, malacca shaft with an ivory collar in the shape of a belt with buckle and a bone ferrule. German.

H. 4 $\frac{3}{4}$ " x 3 $\frac{1}{2}$ ", O.L. 36 $\frac{1}{2}$ "

\$600-\$800

98. Ivory Fantasy Hog Cane

19th Century -A finely carved elephant ivory fantasy visions of a "sausaged" hog in the amusing Dickensian taste. Malacca shaft with an ivory ferrule and a substantial silver collar finely engraved with a long presentation and struck with Birmingham hallmarks 1898.

H. 4" x 2", O.L. 32 $\frac{1}{2}$ "

\$600-\$800

99. Ivory Ball and Claw Cane

Ca. 1910-Massive hardwood ball and claw knob, rosewood shaft with a silver gilt collar and a horn ferrule. American.

H. 3 $\frac{1}{4}$ " x 2", O.L. 37 $\frac{1}{2}$ "

\$300-\$400



99.



98.

100. Ivory Dog head Day Cane

Ca. 1900-Well carved greyhound head in a beautifully stylized L-shape and longer muzzle with strong teeth and a pair of inset glass eyes. Malacca shaft with a gold rolled metal collar and a horn ferrule. H. 3 ¼" x 1 ¾", O.L. 34"

\$500-\$700

101. Ivory, Silver and Wood Tepliz Figural Cane

Ca. 1900-Malacca day cane with an integral crook handle and horn ferrule, ornate with an exotic bird's head with ivory beak, applied silver feathers and glass eyes. H. 5 ¼" x 5 ¼", O.L. 36"

\$500-\$700

102. Theater Dress Cane

London 1922-Faceted rock crystal ball fashioned a pure natural stone, plain silver collar, ebony shaft and a long horn ferrule. H. 1 ½" x 1 ½", O.L. 37 ½"

\$300-\$400

100.



102.



101.



103.



103. Crocodile English Cane

Ca. 1870-This cane features a baby crocodile head handle on a stem, said to be by the collector who owned it for three decades, an adult crocodile penis bone. The handle comes on a sizeable tropical wood shaft with carved knobs and fitted with a spiked, steel ferrule. H. 6 ½" x 6", O.L. 35 ¼" **\$400-\$600**

104. Swan Day Cane

Ca. 1920-A well carved and naturalistically colored hardwood swan head with inset glass eyes, ebonized shaft with a metal ferrule and a silver collar with Birmingham hallmarks. H. 4" x 2 ¼", O.L. 36 ¾" **\$300-\$400**

105. Ivory Portrait Cane

19th Century-Ball knob with a cartooned man's head, makassar ebony shaft with a finely chased and gilt collar and a horn ferrule. H. 2" x 2", O.L. 35 ½" **\$700-\$900**

104.



105.



106. Kingfisher Cane

Ca. 1920-Large flamed wood handle carved as a kingfisher with glass eyes and an eel-like fish in its long beak, plain gilt collar, rosewood shaft and a metal ferrule.

H. 4 ½" x 3 ¼", O.L. 37 ¼"

\$400-\$500



106.

107. Silver Dog Cane

Ca. 1920-Cast silver long haired dog head with a long and plain silver collar, ebonized hardwood shaft and a brass ferrule.

H. 4" x 3 ¼", O.L. 36"

\$400-\$600

108. Ivory Dress Cane

Ca. 1870-L-shaped ivory handle carved in high relief with an allegorical composition, ebony shaft with a 2 ¾" tall ivory ferrule.

Best German quality.

H. 5 ½" x 3 ¾", O.L. 33 ¼"

\$500-\$600



107.



108.

109.



109. Pheasant Countryside Cane

20th Century-Large fruitwood pheasant head handle, wild cherry branch shaft of a beautiful, natural red-brown tint with a silver collar, glass eyes, and a metal ferrule. H. 2 ¾" x 2", O.L. 37"

\$400-\$500

110. Ivory Dieppe Cane

19th Century-Long and tapering ivory handle carved in relief with an elaborate shield and intricate "M E" initials, ebony shaft with a beaded ivory collar and an ebony ferrule. French. H. 8 ¾" x 1", O.L. 35 ¼"

\$600-\$700

111. Dog Day Cane

Ca. 1900-Fruitwood dog head with long floppy ears and longer muzzle flaked by a pair of straight forward looking inset glass eyes, gilt metal collar, golden ash branch shaft and a metal ferrule. H. 3 ½" x 3", O.L. 37"

\$500-\$600

110.



111.



112. Ivory and Horn Figural Cane

Ca. 1890-Vertical ivory handle carved with a tropical beach and palm trees, on one side there is a seated sailor and his parrot and on the other a pelican and a large turtle. The handle is topped by a plain turned black horn knob and comes on an ebony shaft with a horn ferrule. H. 3 ½" x 1 ½", O.L. 36 ¾"

\$600-\$800

113. Rabbi Folk Cane

Circa 1880-Well carved boxwood head with Kippah and ear locks on an oak shaft with a metal collar, braided leather loop and rubber ferrule. American. H. 3 ¼" x 2", O.L. 35"

\$300-\$400

114. One of a Kind Vertebrae Cane

Ca. 1900-The cane is fashioned of the spine of a redoubtable cobra snake and fitted with a faceted stag horn handle with metal top and matching ferrule. H. 2 ¼" x ½", O.L. 33 ¼"

\$500-\$800

112.



113.



114.



115.



116.



117.



118.



115. Capital Boar Trophy Cane

Ca. 1890-Silver handle with a giant pair of wild hog tusks, coco palm wood shaft and a brass ferrule.American. 4 ¾" x 4 ½", O.L. 36 ½"
\$300-\$400

116. Horn Day Cane

Ca. 1900-Siam horn handle fashioned in a basic L-shape and ergonomically shaped for a perfect fit to the right hand, malacca shaft and a horn ferrule. This late cane has something of a modern sculpture and a fascinating personality of its own and a gilt badge "SCHLOSSBERG WIEN". H. 5" x 4 ½", O.L. 37 ¾"
\$300-\$400

117. Hardwood and Ivory Day Cane

19th Century-Boxwood crook handle with an ivory dog head at the end, glass eyes, belt and buckle collar and a rosewood shaft with a totally worn ferrule. H. 4 ¾" x 4 ½", O.L. 35"
\$400-\$600

118. Agate Dress Cane

Early 20th Century-The polished Milord handle of a natural gray color and subtle foggy structure, ebony shaft with a yellow metal collar and a horn ferrule. H. 3 ½" x 1", O.L. 37 ¾"
\$300-\$400

119. Anti-Semitic Stag Folk-Art Cane

Ca. 1890-A huge stag antler carved with laughing face and long nose out of proportions, shaved malacca shaft and a metal ferrule. Central/ Eastern European. H. 7" x 5 1/2", O.L. 37 1/2"
\$300-\$500

120. Jasper Dress Cane

Ca. 1920-The substantial jasper ball handle of a mottled red-brown color, wide and well chased silver collar, dark rosewood shaft and a metal ferrule. H. 2" x 2", O.L. 35 1/2"
\$400-\$500

121. Duck Day Cane

Ca. 1920-Flamed lemonwood duck head with a broad beak and inset glass eyes, dark rosewood shaft with a metal collar and a metal ferrule. H. 4 1/4" x 2 1/4", O.L. 37 1/4"
\$300-\$400

122. Horn Dress Cane

Ca. 1920-Two colored horn knob plain turned in an elegant shape, enamel collar and a pepperwood shaft with a horn ferrule. The structure and the color hues suggest rhino horn. Mint condition. H. 1 1/2" x 1 1/4", O.L. 35 3/4"
\$200-\$300



119. 120.

122.



121.



123.

123. Decorative Day Cane

European late 19th Century-Bone and horn handle topped by a prone wooden rabbit, flamed rosewood shaft with metal collar and a bone ferrule. H. 4 $\frac{3}{4}$ " x 1 $\frac{3}{4}$ ", O.L. 35 $\frac{1}{4}$ "
\$400-\$500

124. Hard Stone Dress Cane

Ca. 1890-Layered, grey agate straight and fluting handle with a finely chased Victorian gold plated collar and a slender ebony shaft with a tiny metal ferrule. H. 2 $\frac{1}{2}$ " x $\frac{3}{4}$ ", O.L. 37 $\frac{1}{4}$ "
\$200-\$300

125. Duck Head Day Cane

20th Century-Well and stylized carved boxwood duck head with inset glass eyes, lemonwood shaft, plain silver collar with Birmingham hallmarks and a horn ferrule. H. 3 $\frac{3}{4}$ " x 2", O.L. 36 $\frac{3}{4}$ "
\$400-\$500

125.



124.



126. Dog Head Day Cane

Ca. 1920-Hardwood dog head knob with a well figured hairy coat and inset glass eyes, rosewood shaft with a metal collar and a metal ferrule. H. 2 ½" x 1 ¾", O.L. 36"

\$300-\$400



126.

127. Folk Art Cane

Ca. 1900-Straight hardwood handle topped by a carved monkey's head with dark stain highlights, hardwood shaft with a brass collar and a horn ferrule. H. 5 ¼" x 1 ¾", O.L. 37"

\$200-\$300

129.

128. Folk Art Dog Cane

Ca. 1890-A better British boxwood folk art portrait of a French Bulldog's head with inset glass eyes, well chased silver collar, fruitwood shaft and a replaced metal ferrule. H. 4 ½" x 1 ¾", O.L. 37"

\$200-\$300

129. Folk Art Duck Cane

Ca. 1900-Carved fruitwood handle, glass eyes, malacca shaft, leather collar and a metal ferrule. H. 6" x 2", O.L. 36"

\$200-\$300



127.

128.



130.



130. Two Ivory and Gold Canes
Ca. 1900-Smallest handle is 4" x 1", ornate gold collars and end caps, hardwood shaft and both have ferrules. O.L. 36"
\$400-\$500



131. Two Ivory and Silver Canes
Ca. 1900-Smallest is 4 1/4" x 1 1/4", sterling collars and end caps, hardwood shafts and both have ferrules. O.L. 34 1/2"
\$350-\$450



131.



132. Two Ivory Dog Canes
Ca. 1890-Two nicely carved handles one with red glass eyes, smallest is 3 1/2" x 1 1/2", nice condition, brass and white metal collars, hardwood shafts and horn ferrule. O.L. 36"
\$600-\$800

133. Silver and Ivory Dress Cane
Ca. 1890-A silver overlaid handle with a Cleveland Ohio presentation, small hallmark but unreadable collar, malacca shaft with lanyard holes and a metal ferrule. H. 4 1/4" x 2 3/4", O.L. 35 1/4"
\$350-\$450



133.



132.

134. Three Ivory L Shaped Canes

Ca. 1880-1900-A group of three nice period canes, two with minor chips, silver metal collars, hardwood shafts and metal ferrules. Tallest is 36" and shortest is 32".

\$400-\$500

135. Ivory Moon Face Dress Cane

Ca. 1910-A whimsical ivory carving with both a smiling and sad moon face, probably belonged to a wizard?, ornate signed sterling collar, exotic wood shaft and a 2" horn ferrule. H. 4" x 1 5/8", O.L. 35"

\$350-\$450

136. Exotic Ivory Flower Cane

Ca. 1890-A nice Art Nouveau example of which some people attribute to being an erotic cane, silver metal collar, exotic wood shaft and a horn ferrule. H. 3" x 1 5/8", O.L. 32 3/4"

\$300-\$400



134.



135.



136.



137.

138.



137. Japanese Rabbit Cane

Ca. 1890-A carved antler with a mother and two baby rabbits, mother has red glass eyes, sterling collar, bamboo shaft and a metal ferrule. H. 6 ½" x 1 5/8", O.L. 36"
\$400-\$500

138. Ivory Portrait Cane

Ca. 1885-A carved ivory handle of an elderly statesman, signed sterling collar, ebony shaft and no ferrule. H. 1 ½" x 2 ¼", O.L. 36"
\$375-\$450

139. Tortoise Shell Dress Cane

Ca. 1920-A nice Art Deco shell dress cane which has its original patina, signed sterling collar, hardwood exotic shaft and a horn ferrule. H. 4" x 3", O.L. 36"
\$300-\$500



139.

140. Ivory Dragon Cane

Ca. 1885-A carved ivory dragon handle with a loose ball in its mouth, another creature carved on the back end of the handle, coin silver unreadable hallmarked British collar, exotic wood shaft and an ivory ferrule. H. 5" x 1 1/2", O.L. 37"
\$500-\$700

141. Gold and Silver Dress Cane

Ca. 1900-A gold-filled ornate handle with silver swirls, tiger striped design, exotic wood shaft and a horn ferrule. H. 1 3/4" x 2 1/2", O.L. 36"
\$250-\$350

142. Circus Broadside System Cane

Ca. 1890-A system cane used to hammer broadsides on the side a building or a pole, built in tack remover and paper setter, hardwood oak shaft and a stopper ferrule. Hammer 4 1/2" x 1 7/8", O.L. 35"
\$300-\$500

141.



142.



140.





143.

143. New York University Club Cane

Ca. 1900-A nice Art Nouveau ivory and silver inscribed handle, exotic wood shaft and an ivory ferrule. H. 5 1/4" x 2", O.L. 36"
\$400-\$600



144.

144. Bull Dog Glove Holder Cane

Early 20th Century-A carved bulldog with two color glass eyes and ivory ears, working pushbutton mechanism below the mouth, small ivory collar, ebony shaft and a horn ferrule. H. 3" x 1 7/8", O.L. 34 1/2"
\$400-\$500



145.

145. Holuska Watch Cane

Late 19th Century-A nice example of this genre with a sterling handle which is dented on two sides, mechanism needs work, crystal missing, malacca shaft and a metal ferrule. H. 1 1/2" x 1 5/8", O.L. 34"
\$300-\$500



146.

146. Agate Dress Cane

Ca. 1930-An original grey swirl agate handle, ribbed metal collar, mahogany shaft and a horn ferrule. H. 1.5" D. O.L. 35"
\$250-\$350

147. Birdman Cane

Ca. 1885-A carved birdman done in great detail with its original patina, rich malacca shaft and a copper ferrule.

H. 3" x 2", O.L. 34 3/4"

\$250-\$400

148. Northwest Coast Ivory Bird Cane

Ca. 1900-A nice stylized carving of this genre of canes with signs of original coloration, small chip on inner beak, bamboo shaft and a copper ferrule.

H. 2 1/2" x 2 1/4", O.L. 36"

\$300-\$500

149. Telescope System Cane

Ca. 1875-A two draw silver metal swing out telescope handle, end lens appears milky but you can still use this scope, large silver collar, casing to scope has period dents and dings, malacca shaft and a metal ferrule. H. 5" x 1 5/8", O.L. 34"

\$800-\$1,200

147.

148.

149.





150.

150. Inuit Walrus Cane

Ca. 1925-A nice stylized carving of a fox and bear in walrus ivory, baleen inset eyes, exotic wood shaft and an ivory ferrule. H. 2" x 7 1/2", O.L. 36"

\$500-\$700



151.

151. Art Nouveau Dress Cane

Ca. 1890-A carved lady in hat with large collar, wood and bone handle, large oval copper collar, oval to round exotic wood shaft and a brass ferrule. H. 6" x 2", O.L. 36 1/2"

\$500-\$600

152. Cigarette Container Cane

Ca. 1920-A bamboo system cane which holds hidden cigarettes for its arm, locking mechanism, split bamboo shaft and a metal ferrule. O.L. 34 1/2"

\$200-\$250



152.

153. Folk-Art Snake Cane

Ca. 1900-An American carved oak snake cane with faceted eyes and a 3" brass ferrule. O.L. 35 1/2"

\$150-\$250



153.

154. Ornate Gold Dress Cane

Ca. 1900-A gold-filled ornate handle with various flowers and leaves, an American oak handle and a horn ferrule. H. 3" x 1 1/2", O.L. 36"

\$250-\$350



154.

155. Buffalo Horn Dress Cane

Ca. 1900-A nice American bison handle, unmarked silver metal collar, faux bamboo hardwood shaft and a metal ferrule. H. 4 1/2" x 3", O.L. 35 1/2"

\$250-\$350



156.

156. Silver and Ivory Umbrella

Ca. 1920-A nice ivory handle with an ornate gold end cap, ornate gold-filled collar, working umbrella in nice condition and a metal ferrule. H. 4 1/2" x 1 1/4", O.L. 35"

\$200-\$250

157. Bone Container Cane

Ca. 1900-A nicely carved bone handle which has a screw top, probably used for a cheroot, ornate silver metal collar, ebony shaft and a horn ferrule. H. 5 1/4" x 1", O.L. 39"

\$250-\$400



155.



157.

158.



159.



161.



160.



158. Stag Colonial Cane

Ca. 1800-A stag handle with a silver cartouche atop, silver metal collar, metal lined eyelet holes, a once vine wrapped natural grown shaft with a natural patina and a 2 1/2" metal ferrule.

H. 3 1/2" x 2 3/4", O.L. 35"

\$400-\$500

159. Northwest Coast Totem Cane

Ca. 1925-Natural antler handle, carved totem shaft with various faces and other designs with inlaid abalone and no ferrule.

H. 5" x 1 1/2", O.L. 36"

\$400-\$600

160. Coquilla Nut Dress Cane

Ca. 1720-A nice early German cane with an ivory disc atop, crenellated brass collar (3 missing), sunburst eyelets, thick malacca shaft and a worn brass ferrule. H. 1 1/2" x 2", O.L. 36"

\$300-\$400

161. Lion Folk Art Cane

Ca. 1920-A carved lion atop with various leafs and drums, various colors of shellac have been used on this cane and a brass ferrule. O.L. 33 1/2"

\$200-\$300

162. Ivory Sword Cane

Ca. 1910-A carved ivory handle with various plants, 4 sided 22 ½" blade, bamboo shaft and a metal ferrule. H. 3 ¾" x 5/8", O.L. 37"
\$300-\$500



162.

163. Blanc de Chine Dress Cane

Late 19th Century-A fine German porcelain handle in nice condition, malacca shaft and a metal ferrule. H. 4 ½" x 3 ¼", O.L. 37"
\$400-\$500



163.

164. Micmac Native American Canes

Ca. 1920-One has twin tendrils and the other has stylized foot prints on the shaft of a deer and a rabbit. Average Length 36"
\$150-\$250



164.

165. Gutta Percha Dress Cane

Ca. 1875-A mythological figure handle, ebony shaft and a 4" iron ferrule. H. 2 ¼" x 2 ½", O.L. 33 ½"
\$200-\$400



165.



167.



166.

166. Ivory Knob Cane

Ca. 1865-Silver eyelets and collar, hardwood shaft. H. 1.5" x 2", O.L.-36".

\$150-\$250

167. Two Blackthorn Canes

Av. length 35"

\$75-\$125

168. Two Country Canes

Av. length 34"

\$50-\$100

169. Folk Art Snake Cane

Ca. 1930-A one piece carved oak branch with various leafs and a polychrome flower, no ferrule. O.L. 33"

\$100-\$200

170. Folk Art Snake Cane

Ca. 1890-A one piece carved oak shaft with a full length snake, federal shield, and a brass ferrule. O.L. 33"

\$150-\$250

169.



170.



168.



**171. Native American
Beaded Cane**

Ca. 1945-An unusual glass
handle atop, one carved
snake, center of shaft is bead
work with minor bead work
missing, lower carved shaft
and a metal ferrule. H. 1 ¼" x
1 ½", O.L. 37 ½"

\$200-\$500

**172. Group of Four Various
Canes**

Various Dates and Various
Materials.

\$500-\$1,000

173. Oak Cane Case

Circa 1975-A 56 compartment
cane case in golden oak. 45" x
36" x 12"

\$500-\$700



172.



171.



173.



174.

174. A Pair of Country Canes
 Ca. 1900-One in stag the other
 horn, ornate silver collars, exotic
 wood shafts and metal ferrules.
 H. 4" x 1 1/2",
 Average Length 35"
\$200-\$300

176.

175. Ivory Dress Cane
 Ca. 1890-A Japanese "thousand
 face" carving which is signed,
 malacca shaft and a horn ferrule.
 H. 1 7/8" x 2", O.L. 36"
\$400-\$600

176. Cat in the Hat Cane
 Ca. 1920-An unusual carved cat
 from a stag horn, bamboo shaft
 and a stag ferrule. H. 5" x 1",
 O.L. 33 1/2"
\$300-\$500

177. Horn Hiking Stick
 Ca. 1925-A nice example with a
 goat hoof collar, natural grown
 exotic shaft and an iron pike
 ferrule. H. 6" x 3", O.L. 35 1/2"
\$160-\$250



175.



177.

178. Native American Cane

Ca. 1930-A simple antler handle, woven collar, probably horse hair as is the shaft, some minor damage and a metal ferrule. H. 2" x 6", O.L. 34"

\$300-\$500

179. Lucite Dog Cane

Ca. 1940-A well formed dog with two color glass eyes, large horn collar, bamboo shaft and no ferrule. H. 3" x 4", O.L. 33 ¾"

\$250-\$350

180. Silver and Burl Country Cane

Dated 1893-A silver overlaid burl with one small piece missing, natural bark hardwood shaft and no ferrule. H. 3 ½" x 2 ½", O.L. 32 ½"

\$100-\$200

181. Horn Dress Cane

Ca. 1930-A black horn crutch handle, woven wire silver collar, exotic wood shaft and a horn ferrule. H. 4 ¼" x 3 ½", O.L. 35"

\$300-\$400



178.

179.



181.



180.





182.

182. Ivory Lion Cane

20th Century-A lounging ivory king of the beast with red two color glass eyes, exotic wood shaft and a metal ferrule. H. 4 ½" x 2 ¼", O.L. 36"
\$500-\$600



183.

183. Silver Dress Cane

Ca. 1895-A signed .800 silver dress cane with high relief work, a few noticeable dents and dings on the end caps but it does not distract, hardwood shaft and a horn ferrule. H. 5" x 2 ¾", O.L. 36"
\$250-\$400



184. Silver Snake Cane

Ca. 1930-A .800 silver viper with emerald green eyes, signed but unreadable maker's marks, ebony shaft and a horn ferrule. H. 3 ½" x 2 ½", O.L. 36 ½"
\$400-\$500



184.

185. Rabbit Defensive Cane

Ca. 1900-A silver metal handle with a fine casting which doubles as a club type weapon, by holding the cane you can feel the force of the weight of the handle, bamboo shaft and a small copper ferrule. H. 2 ½" x 2 ½", O.L. 36"
\$300-\$500

185.

186. Ivory Dog Cane

Ca. 1890-A carved ivory handle with a large dog looking out of its house, chained to the ground, hardwood shaft and a metal ferrule.

H. 6 ½" x 1", O.L. 38"

\$250-\$350

187. Nautical Ivory Cane

Ca. 1820-A nice carved whale's tooth handle on this going ashore cane, engraved coin silver collar with the name "Fuller", coin silver cartouche eyelets, thick exotic wood shaft and a 3 ¼" silver and metal ferrule.

H. 1 5/8" x 1 ¾", O.L. 36"

\$400-\$500

188. Shooter's Seat Cane

Ca. 1900-A nice example of this genre of cane with its original leather seat in fine condition, all original attachments in working condition, oak shaft and an iron pike ferrule. O.L. 34 ½"

\$250-\$350

189. Cigarette Lighter Cane

Ca. 1925-An Art Deco unmarked sterling cigarette lighter system cane, working condition, ebony shaft and a metal ferrule. H. 3" x 1 5/8", O.L. 36"

\$400-\$600



187.



186.



188.



189.





191.

190. Perfume Bottle System Cane

Ca. 1900-A hallmarked silver handle which has a hinged lid with a perfume bottle inside, the ground lid has a few small chips and breaks to the top of the dabber, three small dings to the handle, thick exotic wood shaft and a horn ferrule. H. 3" x 7/8", O.L. 36"

\$250-\$350

191. Stag Eagle Cane

20th Century-An expert carving of our national bird with two color glass eyes, probably elk horn, shield cartouche attached to end of handle, large iron collar, thick twigspur shaft and a metal ferrule. H. 6" x 2", O.L. 35 1/2"

\$350-\$500

192. Gold Dress Cane

Ca. 1900-A signed Simmons ornate gold-filled handle, thick ebony shaft and a metal ferrule. H. 1 1/2" x 1 3/4", O.L. 32 1/2"

\$250-\$350

192.

190.



193. Staghorn Bear Cane

20th Century-A carved staghorn with three bears which are fishing for trout, nicely carved in high relief, silver metal collar, exotic wood shaft and a horn ferrule. H. 3 1/4" x 4 1/2", O.L. 35 1/2"

\$300-\$500



193.

194. Folk-Art Portrait Cane

Ca. 1870-A whimsical massive carving of a gentleman with a long nose and bushy eyebrows, one piece carving, 85% bark remains on shaft and a metal ferrule. H. 6" x 7", O.L. 41"

\$300-\$600

195. Folk-Art Man

Ca. 1880-A carved wood handle with a beat up right ear, large coin silver collar, hallmarked JTAB, thick bamboo shaft and a metal ferrule. H. 2 1/4" x 2 1/2", O.L. 36"

\$200-\$300

196. Ivory Dress Cane

Ca. 1890-A well proportioned carved handle, ornate scroll work unsigned sterling collar, thick malacca shaft and a horn ferrule. H. 3" x 1 1/2", O.L. 33 1/2"

\$250-\$400

197. Gold and Diamond Dress Cane

Ca. 1900-A 9 kt gold handle with a 1/4 kt diamond made by Swaine & Adeney of London, blonde malacca shaft and a horn ferrule. H. 1 1/4" x 1 3/8", O.L. 37"

\$500-\$600



195.



194.



196.



197.

198.

198. Erotic Ivory Cane

19th Century-A carved ivory ball with a brass hinge with a bride and groom on the outer carving, when opened the erotic scenes appear of the wedding night, coin silver collar, coin silver eyelets, natural twigspur shaft with a wonderful patina and a 3" metal ferrule. D. 2", O.L. 36"
\$4,000-\$6,000



199. Erotic Ivory Plaque

19th Century—A high quality one-of-a-kind ivory plaque carved with an erotic scene involving three persons. Exceptional fine detail with a very high relief and intact. It is the finest erotic carving that we have offered so far both in style and detail. We show in the illustrations a set of regular shots and one against the light. 3" x 2 1/4"
\$4,000-\$5,000

199.





200.

200. Erotic Ivory Plaque

19th Century-The best of the best. A one-of-a-kind ivory plaque carved with an erotic scene. Exceptional fine detail with a very high relief and intact. It is the finest erotic carving that we have offered so-far both in style and detail. We show in the illustrations a set of regular shots and one against the light. 3" x 2 3/4"
\$4,000-\$5,000



Winter 2014 Cane Auction

Absentee Bid Form

☐**PHONE**☐**ABSENTEE****Name:** _____**Address:** _____**City:** _____ **State:** _____ **Zip:** _____**Phone:** _____ **Fax:** _____**Email:** _____

Lot #	Description	Bid \$

I understand that there will be a buyer's fee added to the gavel price. Please execute the above bids on my behalf. By signing this bid sheet I have entered into a contract with the auctioneers to pay for my purchases within 30 days after the auction. The buyer is to pay shipping. Please fax this form to our offices at 423.928.2816.

Signature _____**Kimball M. Sterling, Inc. Auctioneers TFL-1915**

125 West Market Street, Johnson City, Tennessee 27601

423.928.1471 • Fax: 423.928.2816 • kimballsterling@earthlink.net



Kimball M. Sterling, Inc. (TFL-1915)
125 West Market Street
Johnson City, Tennessee 37601
kimballsterling @ earthlink.net
423.928.1471

Photography by James Price

Catalog Design by KT Design, LLC
www.kristaft.com

© Copyright 2014 Kimball M. Sterling, Inc.

www.AuctionAuction.com