



**A SANTA  
MONICA  
LIFETIME  
CANE  
COLLECTION**

\*CANE ACTUAL SIZE SHOWN

**KIMBALL M. STERLING, INC.  
TFL-1915**

# TERMS & CONDITIONS

1. Cash or check. A 20% buyers' premium will be added to the hammer price as part of the sale price for all bidders. We reserved the right to hold purchases until the buyers checks clears if buyer is not known by us. Bank letter of credit is acceptable.

2. Mail or phone bids are accepted; the firm may require a deposit.

3. Kimball M. Sterling, Inc. has endeavored to catalog and describe the property correctly. All property is sold as is and neither the auction company nor the consignor will be responsible for descriptions, genuineness, provenance or condition of the property. No statement in the catalog made orally at the sale or otherwise shall be deemed to be a warranty, representation, or an assumption of liability.

4. In the event of any dispute between bidders, the auctioneer shall have total discretion to determine the successful bidder, in which his determination shall be final or to re-offer and resale the article in dispute. Title of the item or items purchased by the bidder will pass at the fall of the gavel and declaration of bidder. This is not an approval auction. All measurements are approximate.

5. Principal auctioneer: Kimball M. Sterling #2467. B. Elizabeth Sterling, auctioneer # 5757. Firm Kimball M Sterling Inc. TFL-1915

6. Bidders may bid live on the Internet by visiting <http://www.auctionauction.com> You may also view the auction at this site and bid by phone.

7. Communications:  
Telephone 423-928-1471.  
Fax 423-928-2816.  
Cellular 423-773-4073, 423-773-4072.  
Email [kimballsterling@earthlink.net](mailto:kimballsterling@earthlink.net)

8. Kimball M Sterling has worldwide shipping available. Mr. We do not ship protected items overseas but can put you in contact with a source that is very reliable and can handle all of your needs.

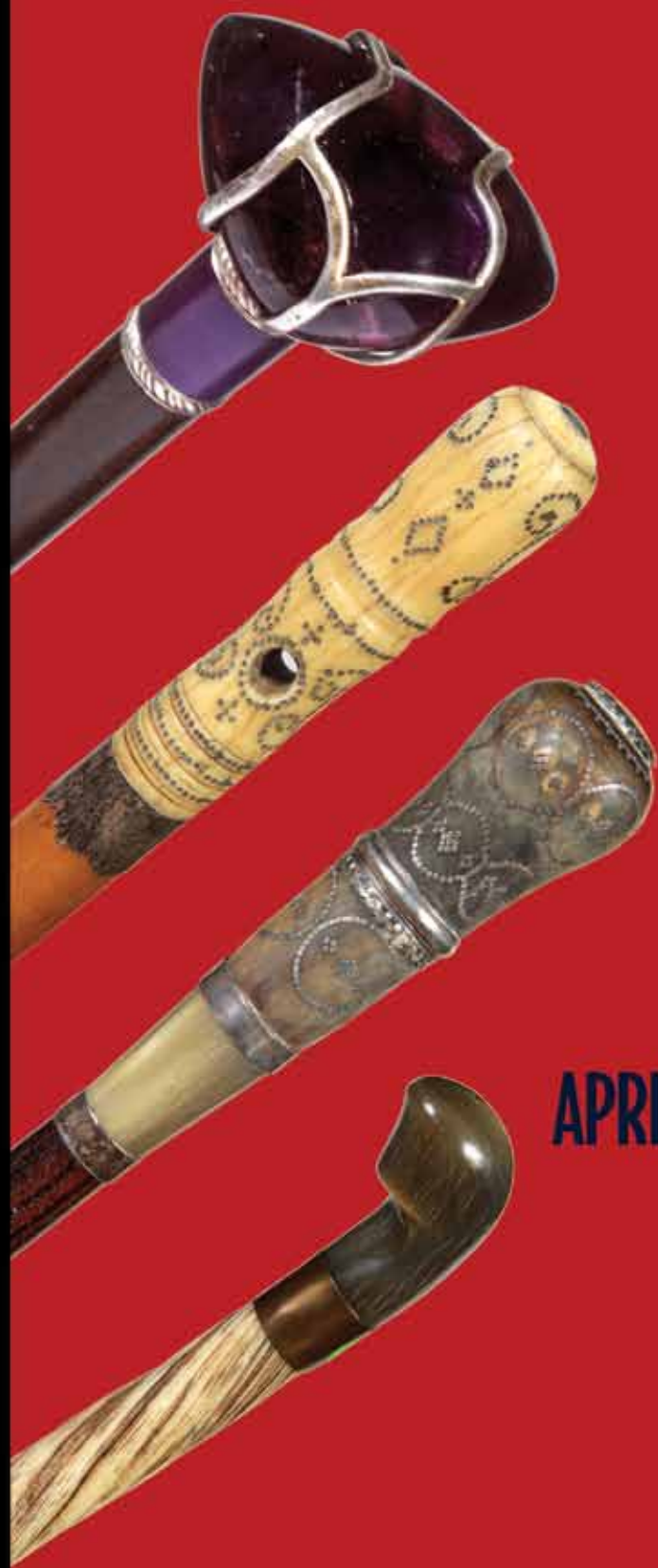
9. Kimball M. Sterling, Inc. will not be held responsible for bids received on the day of the auction, unexecuted absentee bids, phone bidders not contacted or slow Internet bids. Although we do attempt to get all bids executed problems do occur. There will be no recourse from the bidder. We will not be responsible for items left on our location for over 30 days.

10. Sale will be conducted at 125 West Market Street, Johnson City, Tennessee. 37604. Announcements day of the sale take precedence over pre-sale advertising. Any litigation that pertains to this auction will be conducted in the county of Washington in Tennessee and is agreed upon by registering for this auction.

11. Airport is the Tri-Cities Airport, which is approximately 20 miles from the gallery. Internet catalog and live bidding available at [www.auctionauction.com](http://www.auctionauction.com) Best Western Hotel: 423-282-2126. A very fine hotel which offers Sterling Auction a discount rate is the Carnegie Hotel 1216 W State of Franklin Rd, (423) 979-6400.

12. Please call for condition report on sale lots or email us. We do send out multiple photos by email of any lot in the auction. By registering for this auction you accept the terms.

13. Parking service is free.



# A SANTA MONICA LIFETIME CANE COLLECTION

APRIL 13TH AT 11:00 AM EST  
JOHNSON CITY

Preview 9:00 AM the morning of the auction  
or by appointment anytime before the auction

Kimball M. Sterling  
Auction Gallery  
125 West Market Street  
Johnson City  
Tennessee 37601  
kimballsterling@earthlink.net  
423.928.1471

Live on the internet at [LIVEAUCTIONEERS.COM](http://LIVEAUCTIONEERS.COM)  
Two Time Winner of Best of Show from the  
National Auctioneers Association

KIMBALL M. STERLING, INC.  
TEL-1915

**1. Ivory and Sterling Dress Cane**

Ca. 1890-A carved ivory handle with a signed New York presentation end cap, ornate signed sterling collar, original snakewood shaft and a metal ferrule.

H. 4 ½" x 1 5/8", O.L. 36"

**\$500-\$600**

1.



**2. Ivory Eagle Dress Cane**

Ca. 1885-A handsome carved ivory eagle with two 12 star flags, ornate gold-filled collar, malacca shaft and a 2" horn ferrule.

H. 4" x 5", O.L. 35"

**\$700-\$1,000**

2.



**3. Toledo Sword Cane**

Ca. 1925-A full malacca sword cane with an inscribed "Toledo" 27" near mint blade, twist lock gold metal collar and a horn ferrule.

O.L. 35"

**\$500-\$700**

**4. Aviator Carved Cane**

Ca. 1925-A finely carved pilot's head in helmet with a large mustache, metal collar, hardwood shaft and no ferrule.

H. 3 ¼" x 2", O.L. 34 ½"

**\$400-\$500**

4.



**5. Opera Glass Cane**

Ca. 1930-A working pair of binoculars which are leather covered, large brass collar, ebonized shaft and a metal ferrule.

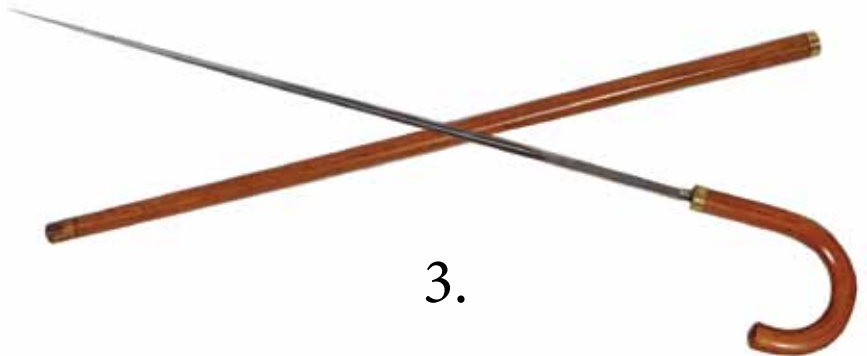
H. 3 ½" x 1 ¼", O.L. 35 ½"

**\$400-\$500**

5.



3.





10.



6.



#### 6. Stag Exotic Bird Cane

Ca. 1910-A carved antler bird with two color glass eyes, silver metal collar, elm wood shaft and a horn ferrule.  
H. 4 1/4" x 2 1/4", O.L. 35"

**\$300-\$400**

#### 7. Chinese Ivory Dress Cane

Ca. 1900-A large carved dragon ivory handle with beaded eyes, inscribed gold metal collar, exotic wood shaft and a metal ferrule.

H. 8 3/4" x 2", O.L. 37"

**\$1,000-\$1,200**

#### 8. Ivory "Basket of Fruits" Cane

Ca. 1900-A finely carved basket cane with various fruits, malacca shaft and a metal ferrule. H. 2" x 2", O.L. 36"

**\$400-\$600**

7.



9.



#### 9. Chinese Ivory Cane

Ca. 1910-A carved ivory dragon, horn and ivory segmented shaft and no ferrule. H. 2 1/2" x 2 3/4", O.L. 36"

**\$300-\$500**

#### 10. Gold Dress Cane

19th Century-A British Hallmarked handle, H. M., tested to be at least 10 kt, gold eyelets, malacca shaft and a metal ferrule. H. 1 1/4" x 1", O.L. 33 1/4"

**\$400-\$500**



8.

**11. Ivory Erotic Cane**

Ca. 1875-An ivory handle with an age separation in the rear, partially bare breasted relief carved lady, unsigned coin silver collar, malacca shaft and a horn ferrule.

H. 3 ½" x 3 ½", O.L. 35"

**\$500-\$600**



11.

**12. Erotic Ivory Cane**

Ca. 1900-A carved hog ivory handle of a lady hiding in a tree trunk, dented silver metal ornate collar, ebonized shaft and a metal ferrule.

H. 4" x 2 ½", O.L. 36"

**\$500-\$600**



13.

**13. Ivory Lion Cane**

Ca. 1885-Carved ivory lion, gold metal collar, mahogany shaft and a brass ferrule. H. 4" x 1 7/8", O.L. 36"

**\$350-\$450**



12.

**14. Carved Dog Glove Holder**

Ca. 1930-A large carving of a terrier or a schnauzer which retains 95% of its original paint, two color glass eyes, push button lower jaw for the automation, wood collar, scribed bamboo shaft and a copper ferrule.

H. 4" x 3", O.L. 36 ½"

**\$500-\$600**



14.

**15. Victorian Silver Dress Cane**

Ca. 1875-An unusual burl shaft with original bark, ornate silver whimsy attached to a handle and a metal ferrule. H. 3 ¾" x 3 ¼", O.L. 34 ½"

**\$250-\$350**



15.



16.

20.



#### 16. Chinese Silver Dress Cane

Ca. 1900-A high relief casting with Chinese motifs, exotic wood shaft and a metal ferrule.

H. 4 1/2" x 3 3/4", O.L. 37"

**\$400-\$600**

#### 17. Nude Ivory Dress Cane

Ca. 1900-A primitive ivory carving of an erotic nude, signed sterling collar, ebonized shaft and a metal ferrule.

H. 5 1/2" x 1 1/2", O.L. 38"

**\$1,000-\$1,200**

#### 18. Carved Arab Cane

Ca. 1890-A nicely carved Arab with two color glass eyes, retains most of the original paint, ornate gold-filled collar, carved hardwood shaft and a metal ferrule.

H. 3 1/2" x 2 3/4", O.L. 38"

**\$400-\$600**

#### 19. Ivory Elephant Cane

Ca. 1910-A walrus ivory carved elephant, silver metal collar, oak shaft and a metal ferrule.

H. 6" x 1 5/8", O.L. 36"

**\$500-\$700**

#### 20. Ivory Bulldog Cane

Ca. 1885-A carved ivory bulldog with two color glass eyes which is encased in an ornate signed sterling handle, exotic wood shaft and a metal ferrule.

H. 5 1/2" x 1 1/2", O.L. 38"

**\$500-\$800**



17.



18.



19.



**21. Fox and Bird Cane**

Ca. 1935-A cast fox with ornate metal work probably in nickel silver or pewter, oak shaft and no ferrule-H. 5" x 2 1/2", O.L. 36"  
**\$250-\$350**

**22. Ivory Flashlight Cane**

Ca. 1910-A carved ivory walrus which doubles as a flashlight when the shaft is turned, the entire walrus lights up, brass collar, hardwood shaft and a metal ferrule-H. 4" x 1 1/4", O.L. 37 1/2"  
**\$700-\$1,200**

**23. Horn Sword Cane**

Ca. 1900-Carved horn handle, ornate silver collar, a signed 18" Coulaux & Co. blade with a push button working mechanism, exotic wood shaft and a brass ferrule-H. 4" x 2 3/4", O.L. 35 1/2"  
**\$500-\$800**

**24. Ivory Elephant Cane**

Ca. 1910-A large carved elephant handle, small ivory collar, malacca shaft and a horn ferrule-H. 2" x 2", O.L. 36"  
**\$400-\$600**

**25. Silver Lion Dress Cane**

Ca. 1925-A signed 800 silver lion dress cane, German, hardwood shaft and a metal ferrule-H. 4 1/2" x 5", O.L. 37"  
**\$400-\$600**

22.



23.



25.



21.



24.





26.

**26. Ivory Mongoose and Snake Cane**  
Ca. 1910-A carved ivory handle with mongoose and snake, large metal collar, snake skin covered shaft and a metal ferrule. H. 5 ½" x 1 ½", O.L. 36"  
*\$400-\$600*

**27. Narwhal Nautical Cane**  
Ca. 1870-Large exotic horn handle, copper collar, 32 ½" narwhal shaft and a 3" copper ferrule. H. 3 ½" x 2", O.L. 39"  
*\$3,000-\$5000*

**28. Whalebone Nautical Cane**  
Ca. 1880-A whale's tooth and baleen handle, silver metal collar, full whalebone shaft and a metal ferrule. H. 3 ¾" x 3 ½", O.L. 35", Dia. at top of shaft 7/8"  
*\$1,500-\$2,000*



28.



27.

**29. Ivory Horse Dress Cane**

Dated 1905-A carved ivory race horse with two color glass eyes, ornate gold-filled collar, ebony shaft and a horn ferrule-H. 5 ½" x 1 ¾", O.L. 36 ½"

**\$500-\$700**

**30. Ivory Dragon Cane**

Ca. 1910-A carved ivory dragon with beaded eyes, carved ball in mouth, copper collar, hardwood shaft and a metal ferrule-H. 3 ¾" x 2", O.L. 36"

**\$350-\$450**

**31. Pin Ivory Cane**

Ca. 1890-An unusual handle which has an ink pin on one side and the other a wood blotter, horn and ivory handle, rose gold-filled collar, ivory eyelets, malacca shaft and a horn ferrule-H. 7" x 3 ½", O.L. 36"

**\$600-\$900**

**32. Sterling Picnic and Cork Screw Cane**

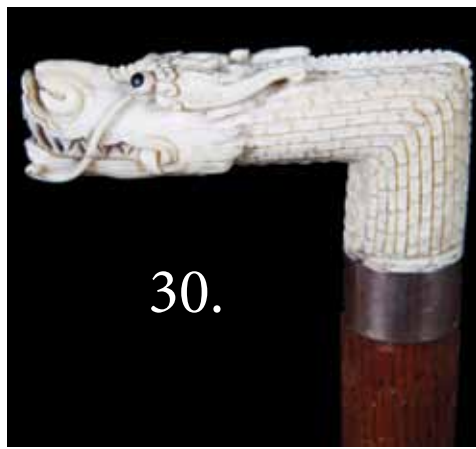
Ca. 1910-An ornate Gorham silver compartment cane which is signed sterling, by removing the dented silver top an ornate fork and cork screw can be used, wrapped leather collar, malacca shaft and a metal ferrule-H. 3 ¼" x 1 ¼", O.L. 36"

**\$500-\$600**

**33. Spaniel/Dog Glove Holder Cane**

Ca. 1930-A nicely carved and painted dog with two color glass eyes, push button lower lip for holding gloves, hallmarked British collar, exotic wood shaft and a metal ferrule-H. 2 ½" x 3 ¼", O.L. 35 ½"

**\$400-\$600**



34.



### 34. Silver and Horn Pique Dress Cane

Mid 18th Century-An unusual silver and horn pique handle with 3 coin silver bands of which one is separated but repairable, replaced silver collar and mahogany shaft and a metal ferrule.

H. 6 ¼" x 2", O.L. 38"

**\$3,000-\$4,000**

### 35. Ivory and Gold Dress Cane

Ca. 1910-A nice piece of pig ivory with an ornate gold-filled end cap, later shaft and collar, and a 3" brass ferrule.

H. 5" x 1 ½", O.L. 35 ¾"

**\$350-\$450**

35.



### 36. Ivory Dress Cane

Ca. 1935-A carved ivory handle, brass collar, woven leather replaced shaft with stopper ferrule. H. 4 ½" x 1 ½", O.L. 35"

**\$300-\$400**

36.





**37. Wolf Man Ivory Cane**

Ca. 1900-An unusual carved ivory handle of a human with a wolf's appearance, hardwood shaft and a horn ferrule. H. 5 ½" x 2", O.L. 37"

**\$400-\$600**

37.



**38. Chinese Cloisonné Dress Cane**

Ca. 1890- A fancy enamel worked handle with minor imperfections, small copper collar, painted bamboo shaft and a metal ferrule. H. 7 ¼" x 1", O.L. 36"

**\$350-\$550**

38.

**39. Ear Trumpet Hearing Cane**

Early 20th Century-A brass handle which doubles as an ear trumpet, brass collar, exotic wood shaft and no ferrule. H. 3 ½" x 1 ¾", O.L. 38"

**\$500-\$700**



**40. Perfume Bottle System Cane**

Ca. 1930-A hallmarked silver handle which has a hinged top, stopper for a perfume bottle with one side chipped, large silver collar, exotic wood shaft and a horn ferrule. H. 1" x 3", O.L. 36"

**\$400-\$500**

40.



**41. Ivory Dress Cane**

Ca. 1910-Carved ivory handle, British Hallmarked horseshoe good luck collar, worn ebony shaft and a metal ferrule. H. 4 ½" x 1 ½", O.L. 34 ½"

**\$300-\$400**

39.



41.



43.



42.

**42. American Flag Parade Cane**

Ca. 1925-An example of the parade American flag cane with a tattered flag, wood shaft and a metal ferrule.  
H. 1 ½" x 2", O.L. 36"  
*\$100-\$150 (as is)*

44.

**43. Inlaid Russian Dress Cane**

Ca. 1935-A completely inlaid shaft probably nickel silver and a metal ferrule. O.L. 35"  
*\$250-\$350*

**44. Victorian Baby Rattle Cane**

Ca. 1880-A Humpty Dumpty Victorian rattle which has been made into a dress cane, probably a memory stick of an earlier time in life, malacca shaft and a horn ferrule.  
H. 3" x 1 ½", O.L. 34"  
*\$700-\$1,000*



45.

**45. Native American Chief Cane**

Ca. 1900-A carved wooden Indian Chief done in a master's hand, high relief, horn collar, malacca shaft and an unique silver ferrule.  
H. 4" x 2 ¼" x 1 5/8", O.L. 37 ½"  
*\$700-\$1,200*

**46. Blow Gun Cane**

Late 19th Century-A Dumonthier gun cane with a shaft which unscrews midway to load the bullet, the signed brass handle unscrews to expose a mouth piece, by blowing into the mouth piece the firing pin hits the shell and fires the bullet, bamboo shaft and no ferrule.  
H. 1 ¾" x ¾", O.L. 36"  
*\$1,300-\$1,800*

46.



**47. Wine Maker's Thermometer Cane**

Ca. 1885-A stag handle compartment cane which holds a long thermometer said to be used for wine making, ornate coin silver collar, 22 ½" thermometer, malacca shaft and a horn ferrule. H. 5" x 3", O.L. 35 ½" (thermometer does not work)

**\$700-\$1,000**

**48. Percussion Gun Cane**

Ca. 1865-A horn handle spring plunger firing mechanism, 6" small caliber barrel, working plunger fire single shot pistol, silver collar and a metal ferrule. H. 1 ½" x 1 ¾", O.L. 34"

**\$1,000-\$1,500**

**49. Over-Hammer Percussion Gun Cane**

Ca. 1865-A very unusual gun cane presentation in working condition, by sliding the steel collar downwards the pistol tilts up to be fired and supported by the cane handle, a wonderful idea in a gun cane with a safety locking mechanism, appears to have original handles, cross hatch engravings on the body, app. 38 cal., locking collar mechanism, hardwood shaft and a metal ferrule, pistol is 9" x 6", O.L. 36"

**\$3,000-\$5,000**

47.



48.



49.





50.



### 50. Gold Quartz Presentation Cane

Dated 1869-An ornate engraved presentation with two oval gold quartz specimens, one is a thumb rest and one is an end cap, fine ebony shaft and a metal ferrule.

H. 3 ½" x 2 ½", O.L. 36"  
\$2,000-\$2,500

### 51. Ivory Pomander Physician's Cane

Ca. 1690-A large example of this type of cane with a baleen disc atop and four diamond cut holes, top screwing mechanism is perfect to handle, a pair of lanyard holes carved in the ivory, large coin silver collar, 1 ¼" malacca shaft and a 3" scalloped original ferrule.

H. 1 ¾" x 3 ½", O.L. 36"

\$1,800-\$2,500



51.



### 52. Horse Measuring Cane

Ca. 1865-A buffalo horn handle carved to depict a ferocious dog with ivory eyes and teeth, ornate brass and silver collar, in tact ruler which measures the hands of a horse, brass collar, 1 ¼" thick malacca shaft and a horn ferrule.

H. 4 ¼" x 3", O.L. 35"

\$700-\$900



52.



**53. Nubian Perfume Atomizing Cane**

Late 19th Century-A cast Britannia handle that unscrews from the bamboo shaft which has a reservoir for perfume, a button on the rear of the cane is pushed and a spray of perfume comes out of his mouth, bamboo shaft, working mechanism but needs tweaking and a metal ferrule.

H. 3 ½" x 2", O.L. 34"

**\$900-\$1,200**



**54. Ivory Lion Dress Cane**

Ca. 1910-A segmented elephant ivory cane with a lion, tiger and snake, horn spacers and a horn ferrule. H. 5 ½" x 3", O.L. 36"

**\$900-\$1,200**

**55. Mid-Wife Baby Scale Cane**

Late 19th Century-The collector purchased this as a midwife cane but it could be a scale for anything, English Hallmarked silver handle, brass set "Portia" brass scales, 1" malacca shaft and a horn ferrule.

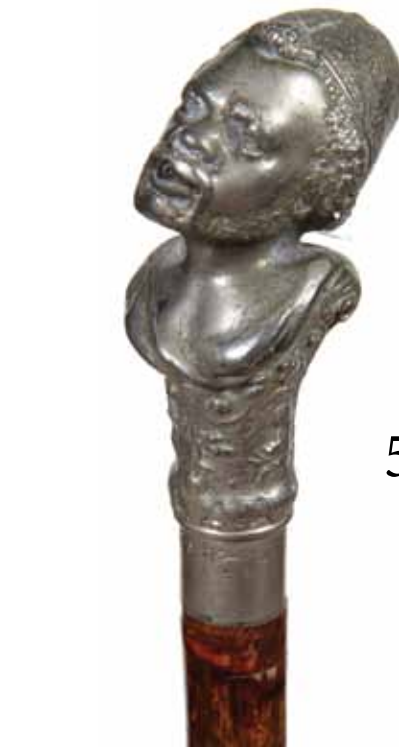
H. 1 3/8" x 1 ¼", O.L. 34"

**\$500-\$1,000**

**56. Full Ivory Nautical Cane**

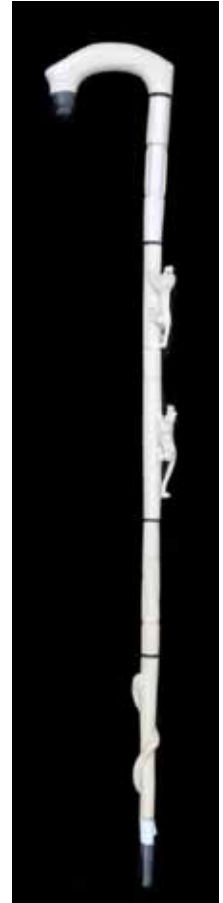
Ca. 1880-A carved ivory fist and baton with copper spacers, 10 ¾" upper whalebone shaft, 19" spiral carved ivory lower shaft and no ferrule. H. 3" x 2", O.L. 33 ½"

**\$1,000-\$1,200**



54.

53.



56.



55.





59.

### 57. Ivory Nautical Cane

Ca. 1880-Ivory whale's tooth handle, shark spinal column shaft with three horn spacers, bone ferrule with iron pike. H. 1 ½" x 1 ½", O.L. 33 ¼"

**\$400-\$500**

### 58. Horn Parrot Cane

Ca. 1920-A carved parrot handle with two color red glass eyes, small horn collar signed Antoine-Paris, malacca shaft and a horn ferrule.

H. 2 ½" x 2 ½", O.L. 34 ½"

**\$400-\$600**

### 59. Ivory Skull Cane

Ca. 1890-A carved Japanese ivory handle with snake biting frog on skull, signed Asian characters, blonde malacca shaft and a horn ferrule.

H. 2" x 2 ¼", O.L. 34"

**\$700-\$1,000**

61.

### 60. Ivory Lion Cane

Ca. 1900-A large carved ivory lion with two color glass eyes, silver metal collar, ebony shaft and a horn ferrule.

H. 3" x 1 ¾", O.L. 35"

**\$600-\$900**

### 61. Retractable Fan Cane

Late 19th Century-A nice example of a retractable, near mint fan cane in working order, coin silver top, large ivory collar, bamboo shaft, original pull cord and a metal ferrule.

H. 1 ½" x 1 ½", O.L. 33 ¾"

**\$1,800-\$2,500**



57.



58.



60.



**62. Vesta Silver Cane**

Ca. 1890-An unusual match holder with a shagreen striker atop, mother of pearl push button mechanism, brass striking mechanism inside also, 1 ¼" malacca shaft and a horn ferrule.

H. 1 ½" x 4", O.L. 36"

**\$700-\$900**



62.

**63. Ivory Cat Cane**

Ca. 1885-A carved ivory cat with high relief, ornate gold-filled collar, exotic wood shaft and an ivory ferrule.

H. 1 ½" x 2", O.L. 34 ¼"

**\$1,500-\$2,000**



63.

**64. Ivory Rabbit Cane**

Ca. 1900-A carved ivory rabbit with two color glass eyes and standing ears, brass collar, thick malacca shaft and a metal ferrule.

H. 3 ½" x 1 ¾", O.L. 38"

**\$900-\$1,200**



64.

**65. Ivory Telescope Cane**

Early 20th Century-A hinged 3 draw 6 ½" brass telescope in working order, ivory knob, large ostrich skin collar and small brass collar, oak shaft and a horn ferrule.

H. 1 ¾" x 2 ½", O.L. 36"

**\$1,800-\$2,500**



65.



67.

66.

#### 66. Asian Ivory Cane

Ca. 1890-A carved Asian handle with a mother ape and her child, ornate silver metal collar, ebony shaft and a metal ferrule.

H. 4 ¼" x 1 ¼", O.L. 35"

**\$700-\$1,000**

#### 67. Asian Tippler's Stick

Ca. 1920-An ornate silver plated handle with a Happy Buda atop, white metal collars, handle unscrews to produce a glass and a flask with a cork top, tree bark shaft and an old brass ferrule.

H. 1 ½" x 3", O.L. 36"

**\$400-\$500**

#### 68. Ivory Horse and Fold Cane

Ca. 1900-A full figure carving of a horse and her baby with two color glass eyes, ornate engraved silver collar with British hallmarks, exotic wood shaft and a metal ferrule.

H. 5" x 1 ¾", O.L. 35"

**\$1,500-\$2,500**

#### 69. Fat Man Folk Art Cane

Ca. 1860-A very nicely carved folk art head with a nice original patina, large coin silver shaft Hallmarked JFAB, B7, thick bamboo shaft and a metal ferrule.

H. 2 ½" x 2 ½", O.L. 36"

**\$400-\$500**



68.

69.



**70. Tortoise and Gold Dress Cane**

Ca 1860-A highly engraved tested 14 kt gold handle which is both cast and hand engraved, unique gold leaf eyelets, full tortoise shell shaft with expected splits and shrinkage, gold and hexagonal silver ferrule. H. 1 ¾" x 1 ¼", O.L. 35"  
**\$2,000-\$3,000**

**71. Chinese Ivory Mystery Cane**

Ca. 1930-A carved ivory mystery ball cane with approximately 5 balls within (maybe more), gold cartouche atop, large ivory collar, faux tortoise shell shaft and a horn ferrule. H. 6" x 2 ½", O.L. 38"  
**\$500-\$700**

**72. Silver and Pearl Dress Cane**

Ca. 1890-A fine dress cane with a large piece of pearl covered by filigree work, silver metal collar, ebony shaft and a metal ferrule. H. 4 ¼" x 1 ¾", O.L. 35 ½"  
**\$400-\$500**

**73. Dog Glove Holder Cane**

Early 20th Century-A carved Black Forest Glove Holder Dog with two color glass eyes, push button drop lower jaw, copper and gold-filled collar, exotic wood shaft and a horn ferrule. H. 3" x 3 ½", O.L. 37"  
**\$500-\$600**



70.

71.



73.



72.





74.



76.



#### 74. Silver Gorilla Cane

Ca. 1940-A sterling Gorham solid cast handle with ruby eyes, exotic wood shaft and a metal ferrule. H. 2 ½" x 2 ½", O.L. 35 ½" \$600-\$900

#### 75. Tobacco Snuff Ivory Cane

Ca. 1880-An ivory compartment cane which still retains snuff from its previous owner, the top is threaded to the base and works perfectly, 1 ½" malacca shaft and a metal ferrule. H. 1 ¾" x 1 ½", O.L. 37" \$500-\$600

#### 76. Ivory Frog Cane

Ca. 1890-Japanese carved ivory frog, British hallmarks, coin silver collar, faux bamboo, hardwood shaft and a metal ferrule. H. 2 ¾" x 1 ½", O.L. 36" \$800-\$1,200

#### 77. Pocket Watch Dress Cane

Ca. 1885-A compartment ivory handle which holds a "0" gold pocket watch with a porcelain and gold decorated dial, coin silver collar, large stepped malacca shaft and a metal ferrule. H. 2" x 1", O.L. 34" \$700-\$1,000

#### 78. Ivory Sewing Box Cane

Ca. 1885-An ivory compartment cane which contains an ivory thimble and bobbin, needles, malacca shaft and a horn ferrule. H. 2" x 1 ½", O.L. 35" \$600-\$900

78.



77.



**79. Bone Dress Cane**

Ca. 1860-A carved German bone handle, small ivory ring collar, hardwood shaft and an iron pike ferrule. H. 5 ¼" x 1 ½", O.L. 36 ½"  
**\$400-\$500**

79.



**80. Chinese Carved Cane**

Ca. 1930-A uniquely carved Chinese man with two color glass eyes and ponytail, brass collar, hardwood shaft and a metal ferrule. H. 2 ½" x 2", O.L. 37"  
**\$300-\$500**

80.



**81. Gold-Filled Dress Cane**

Ca. 1900-A very large and ornate handle probably by Simmons with a monogram atop, 1" exotic wood shaft and a metal ferrule. H. 1 7/8" x 3", O.L. 34"  
**\$400-\$600**

**82. Gold-Filled Dress Cane**

1892-"Frank T. Achuckle, Chairman from Democratic Friends, July 28, 1892" presentation, very ornate handle with flowers throughout, 1" ebony shaft and a metal ferrule. H. 1 7/8" x 2 1/8", O.L. 36"  
**\$400-\$500**

82.

**83. Gold-Filled Dress Cane**

Dated 1912-An ornate and fine cast handle with the hallmark K & H, ebony shaft and a metal ferrule. H. 1 ¾" x 3", O.L. 36"  
**\$350-\$450**

83.



81.







84.

**84. Gold-Filled Sword Cane**  
Dated 1896-An ornate gold-filled handle, blonde hardwood spacer, 24" blade with push mechanism, palm shaft and a copper ferrule.  
H. 1 5/8" x 2 1/2", O.L. 34 1/2"  
\$600-\$900



85.

**85. Gold-Filled Dress Cane**  
Dated 1900-An ornate presentation handle which is hallmarked 3T 663, ebonized shaft and a bimetal ferrule.  
H. 4" x 2", O.L. 34"  
\$350-\$450



**86. Gold-Filled Dress Cane**  
Dated 1901-An ornate Christmas presentation, malacca shaft and a horn ferrule.  
H. 4 1/2" x 2 3/8", O.L. 32"  
\$350-\$450

**87. Gold-Filled Dress Cane**  
Ca. 1900-A near mint diminutive handle, ebony shaft and a metal ferrule.  
H. 1 1/4" x 1 1/2", O.L. 36"  
\$250-\$350

87.



**88. Gold-Filled Dress Cane**  
Ca. 1900-A large handle with a monogram presentation, exotic wood shaft and a metal ferrule.  
H. 4 1/4" x 2 3/4", O.L. 36"  
\$200-\$350

86.



88.



**89. Alligator Dress Cane**

Ca. 1925-A nicely carved full gator, missing one glass eye, signed sterling collar, very rich snakewood shaft and a wood ferrule.

H. 3 ½" x 2", O.L. 34 ¼"

**\$400-\$600**

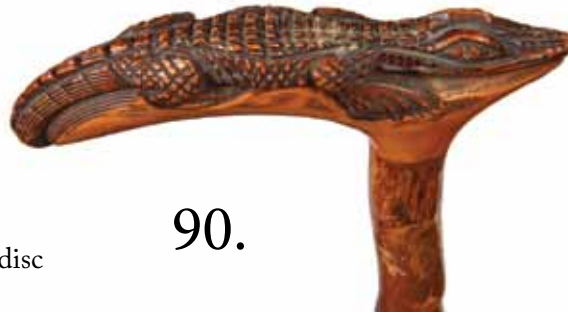


89.

**90. Alligator Folk Cane**

Ca. 1930-A full length carved gator with nice detail work, orange wood handle and shaft and a metal ferrule. H. 5" x 2 ¼", O.L. 35"

**\$400-\$600**



90.

**91. Ivory Elephant Cane**

Ca. 1890-A substantial ivory elephant carving, hallmarked British coin silver collar, ebony shaft and a metal ferrule.

H. 4 ¾" x 1 ½", O.L. 36"

**\$700-\$1,200**



91.

**92. Ivory Pique Dress Cane**

Ca. 1740-A fine pique with detailed work and a coin silver disc atop, carved eyelets, coin silver scalloped collar, malacca shaft and a horn ferrule.

H. 4 ¼" x 1 ¼", O.L. 33"

**\$2,500-\$3,000**

92.



93.



**93. Ivory Whippet Cane**

Ca 1910-A carved Art Deco hound with a natural patina, ornate signed sterling collar, exotic wood shaft and a metal ferrule.

H. 4 ¼" x 1 1/8", O.L. 37"

**\$1,500-\$2,000**



94.

**94. Silver Spaniel Dress Cane**

Ca. 1910-A hallmarked Russian silver dress cane with red glass eyes, exotic wood shaft and no ferrule.

H. 2" x 2 ¼", O.L. 33"

**\$500-\$700**



96.

**95. Silver Fox Dress Cane**

Ca. 1925-A fine cast of a fox watching a pair of birds, signed sterling snakewood shaft with an early leather lanyard and a stopper ferrule.

H. 4" x 3 ¼", O.L. 33"

**\$500-\$700**



97.

**96. Japanese Ivory Cane**

Ca. 1890-A carved ivory handle with multiple apes, small silver collar, exotic wood shaft and a metal ferrule.

H. 8 ¾" x ¾", O.L. 38"

**\$500-\$800**

95.



**97. Ladies Compact Ivory Cane**

Ca. 1895-An ivory compartment cane which contains a mirror on the inside top and a compartment for rouge, hardwood shaft and a metal ferrule.

H. 1 ¼" x 1 ¼", O.L. 35 ½"

**\$400-\$500**



**98. Saw System Cane**

Ca. 1885- A signed Holtzappfel, England saw cane in working and locking condition, natural beech crook shaft, and metal ferrule. O.L. 37.5"

**\$600-\$1000**



**99. Masonic System Cane**

Early 20th Century-A rare and hard to find sterling silver Masonic folding and hinged symbol cane, fine working condition, hand chased collar, exotic wood shaft and a metal ferrule.

H. 1 1/2" x 3", O.L. 37 1/2"

**\$2,500-\$3,500**



**100. Faberge Style Dress Cane**

20th Century-A spinach jade handle with a silver bulldog as an end cap, faux marked Russian hallmarks on a large gold enameled collar with four rubies, exotic wood shaft and a metal ferrule. H. 5 1/2" x 2 1/4", O.L. 36"

**\$2,000-\$2,500**



99.



101.



**101. Faberge Style Automation Bulldog Cane**

20th Century-A solid silver handle with ruby and gold eyes, signed with faux Russian Faberge hallmarks, push button lower jaw, small gold collar, handle was made in around 1972 by a German master craftsman, thick snakewood shaft and a metal ferrule. H. 3 1/4" x 2", O.L. 36 1/2"  
\$2,500-\$3,500

102.



**102. Porcelain Dress Cane**

Late 19th Century-Hand-painted Meissen style handle in fine condition, metal collar, exotic wood shaft and a 2 1/2" ferrule. H. 4" x 3", O.L. 36"  
\$1,200-\$1,800

**103. Secret Compartment Silver Cane**

Ca. 1890-An interesting coin silver casting with a hinged door on the left ear, red stone eyes, British Hallmarked collar, ebonized shaft and a metal ferrule. H. 1 1/2" x 1 1/2", O.L. 33 1/2"  
\$400-\$600



103.

**104. Heidelberg Style  
Carved Ivory Cane**

19th Century-A massive carved masterpiece ivory handle of a man and a young boy on a crossbow hunting trip, the high relief carving of the man is 5 ½" tall, ornate carved ivory collar, thick ebony shaft and a 4" ivory ferrule.

H. 11" x 3" x 1 ¾", O. L. 35 ½"  
**\$4,000-\$6,000**

104.

**105. Ivory Lion Cane**

Ca. 1885-A custom carved lion and snake ivory handle, carved ivory collar, ebonized shaft and a 3 ½" ivory ferrule.

H. 3 ¼" x 5", O.L. 36"  
**\$1,000-\$1,200**

105.



108.



107.



**106. Egyptian Ivory Cane**

Ca. 1910-A carved ivory handle of the young King, metal collar, ebonized shaft and a metal ferrule. H. 2 ½" x 1", O.L. 38"  
\$400-\$500

**107. Whale's Tooth Nautical Cane**

Ca. 1885-A finely formed whale's tooth with a coin silver end cap, British hallmarked collar, partially carved exotic island wood shaft and a metal collar. H. 5" x 1 ¾", O.L. 33 ½"  
\$500-\$700

**108. Ivory Flapper Cane**

Ca. 1910-A carved ivory flapper girl, small ivory collar, malacca shaft and a horn ferrule. H. 1 ½" x 1 ¾", O.L. 34 ½"  
\$300-\$500

106.



**109. Bone Rabbit Cane**

Ca. 1925-A carved bone rabbit with glass eyes, thick oak shaft and a metal ferrule. H. 1 ¾" x 2 ¾", O.L. 35"  
\$400-\$500

**110. Sterling Art Deco Dress Cane**

Ca. 1920-A stylized Art Deco handle, small silver collar, ebony shaft and a metal ferrule. H. 4 ½" x 3 ¼", O.L. 37"  
\$500-\$600

**111. Pug Bull Dog Cane**

Ca. 1910-A Brigg bulldog with silver ears and two color glass eyes, hallmarked and stamped Brigg coin silver collar, bamboo shaft and a metal ferrule. H. 2" x 2 ½", O.L. 38"  
\$350-\$500

110.



109.



111.





**112. Horn Fist Cane**

Ca. 1900-A carved horn with a baboon cupped in the underhand, faux bamboo hardwood shaft and a metal ferrule.

H. 1 ¼" x 1 ¾", O.L. 35 ½"

**\$250-\$350**



112.

**113. Frog Defensive Cane**

Ca. 1960-A heavy cast frog, probably from bell bronze, ebony shaft and a metal ferrule.

H. 2 ½" x 3 ½", O.L. 37"

**\$250-\$300**



113.

**114. Magnifying Scope System Cane**

Ca. 1930-A brass compartment cane which holds a small magnifying glass, gold metal collar, malacca shaft and a horn ferrule.

H. 1 ¼" x 1 ½", O.L. 37"

**\$300-\$500**



115.

**115. Picnic System Cane**

Ca. 1935-A sterling silver compartment cane by International, by unscrewing the top three folding eating instruments are produced, small leather collar, 1 ½" walnut inlaid shaft and a horn ferrule.

H. 1 ½" x 3", O.L. 36"

**\$500-\$700**

**116. Bekko Flashlight Cane**

Ca. 1935-A brown bakelite handle, pushbutton working mechanism, white metal collar, exotic wood shaft and a working flashlight for a ferrule.

H. 4" x 1 ½", O.L. 31"

**\$400-\$500**



114.



116.



118.



117.

### 117. Defensive Dress Cane

Ca. 1925-A heavy silver plated figural top, silver metal collar, ebonized shaft with silver inlay and a metal ferrule.  
H. 3" x 2 1/2", O.L. 36"

**\$250-\$350**

### 118. Tortoise and Silver Dress Cane

Ca. 1925-A British hallmarked silver ball atop a segment of shell, small silver collar, exotic wood shaft and a metal ferrule.

H. 1 1/4" x 7 1/2", O.L. 37"

**\$400-\$700**

### 119. Microscope System Cane

Ca. 1940-A brass and leather department cane which holds a 3 draw mirrored 7" microscope in working condition, leather handle, large brass collar, malacca shaft and a horn ferrule. H. 1 1/2" x 8", O.L. 36"

**\$600-\$1,000**



120.

### 120. Amethyst Dress Cane

Ca. 1935-A massive amethyst stone (app. 150 cts.) with nice clarity, silver overlay, enamel and silver collar with what appears (very hard to determine due to size) to be Russian hallmarks, ebony shaft, 3" x 1 3/4" x 1 1/2" amethyst, exotic wood shaft and a metal ferrule.  
O.L. 36"

**\$1,500-\$2,000**



119.

**121. Russian Dress Cane**

Mid 20th Century-A jade and gold handle with a moon stone atop, red enamel collar with two cabochon rubies, exotic wood shaft and a metal ferrule. H. 3 ½" x 2 ¾", O.L. 35"

**\$2,000-\$3,000**

**122. Sterling Dress Cane**

Ca. 1910-A large ornate sterling handle, ebony shaft and a metal ferrule. H. 1 ¼" x 9", O.L. 36 ½"

**\$300-\$450**

**123. Push-Up Candle System Cane**

Ca. 1875-A hinged ornate top which holds a compartment for matches and a push-up candle, ornate plated collar, working condition, exotic wood shaft and a metal ferrule. H. 1 ¼" x 4", O.L. 37 ½"

**\$500-\$800**



121.



123.



122.





125.



124.



127.



126.



128.

#### 124. Aesthetic Sterling Dress Cane

Ca. 1875-A signed sterling handle with various griffins, sterling collar, ebony shaft and a metal ferrule.

H. 1 3/8" x 2 1/2", O.L. 36 1/2"

**\$350-\$450**

#### 125. Shark Vertebrae Cane

Ca. 1930-A nice example with horn spacers and a horn end cap, metal rod within and a horn ferrule. O.L. 36"

**\$300-\$400**

#### 126. Terrier Automation Cane

Ca. 1920-A carved and painted dog's head, a button at the bottom of the neck is pressed and the eyes and the red tongue extends from the mouth, spiral wood collar, thick malacca shaft and a metal ferrule. H. 2 1/2" x 2 1/2", O.L. 34 1/2"

**\$500-\$800**

#### 127. Rabbit Dress Cane

Ca. 1930-A carved ivory rabbit with two color glass eyes which is resting in a carved horn log, ivory collar, rich ebony shaft and a horn ferrule. H. 5 1/2" x 1 1/4", O.L. 34"

**\$400-\$600**

#### 128. Penny Whistle Cane

Late 19th Century-A system cane which holds a 9" penny whistle in the key of F, thick bamboo shaft and a metal ferrule. O.L. 37"

**\$250-\$350**

**129. Ivory Bulldog Cane**

Ca. 1910-A carved ivory bulldog with glass eyes and a sterling muzzle and collar, natural branch shaft, signed sterling collar and a metal ferrule.

H. 5" x 6", O.L. 37"

**\$350-\$450**



129.

**130. Mikilla Defensive Cane**

Early 20th Century-Horn handle, ornate brass collar, woven leather handle, 6 1/2" hidden metal pike, exotic wood shaft and a large signed metal ferrule. O.L. 35 1/2"

**\$350-\$450**



131.

**131. Crab Claw Dress Cane**

Ca. 1910-A unique carved horn claw, ornate British hallmark silver collar, bamboo shaft and a metal ferrule.

H. 3 1/2" x 1 3/4", O.L. 36"

**\$400-\$600**



130.

**132. Northwest Coast Nautical Cane**

Ca. 1910-A carved ivory seal with baleen eyes, inlaid partial shaft, balance of shaft probably an old cue stick and an ornate brass ferrule.

H. 2" x 4", O.L. 36 1/2"

**\$400-\$600**



132.

**133. U S Military Ivory Cane**

Ca. 1875-A unique ivory carving of a U.S. soldier's pack, dress hat, gun and flag, some remaining brass tacks on handle, two ornate sterling collars, probably a Civil War souvenir, malacca shaft and a horn ferrule.

H. 5" x 5", O.L. 34 3/4"

**\$500-\$800**



133.



135.



134.



137.



136.



138.



139.



#### 134. Silver and Ivory Dress Cane

Ca. 1910-An ornate hallmarked sterling handle, twigspur ivory, small signed sterling collar, exotic wood shaft and a metal ferrule.  
H. 1 1/8" x 5 1/4", O.L. 38"

**\$350-\$500**

#### 135. Defensive "Slap Jack Cane"

Ca. 1935-A heavily weighted handle, stack leather disc on a metal column and a metal ferrule.  
O.L. 34 3/4"

**\$250-\$400**

#### 136. Ivory Sword Cane

Ca. 1885-A carved ivory handle with an 11" 3 sided flower etched blade, horn ringed collar, malacca shaft and a metal ferrule.  
H. 1 1/4" x 2 1/2", O.L. 34 3/4"

**\$400-\$600**

#### 137. Opera Glass Cane

Ca. 1935-A one draw abalone and brass telescope, long brass collar, ebonized shaft and a metal ferrule.  
H. 3" x 1 5/8", O.L. 36 1/2"

**\$300-\$400**

#### 138. Art Deco Lucite Cane

Ca. 1925-A most interesting blue Lucite bird with an amber beak, thick maple shaft and a metal ferrule. H. 2 5/8" x 3 3/4", O.L. 37"

**\$350-\$500**

#### 139. Tippler's Stick

Ca. 1930-A container cane which holds a shot glass and a glass tube with a cork which are both in fine condition, copper handle and collar, hardwood shaft and a metal ferrule.  
O.L. 35 1/2"

**\$300-\$400**



**140. Carbic Scale #429 System Cane**

Ca. 1910-A working example of a British calculating system cane, plated copper handle and sliding copper collar, stationary nickel collar, hardwood shaft and a stopper ferrule. H. 1 ¼" x 6", O.L. 35 ½"

**\$500-\$800**



142.

**141. Keprypa Horse Cane**

Early 20th Century-A carved Greek Island cane, brass collar, twigspur shaft and a metal ferrule.

H. 4" x 6 ½", O.L. 37"

**\$200-\$250**



141.

**142. Pewter Race Horse Cane**

Ca. 1900-A cast pewter race horse with saddle atop and a hoof end cap, twigspur shaft and a metal ferrule.

H. 5 ½" x 2 ¼", O.L. 36"

**\$150-\$250**



140.

**143. Artist System Cane**

Ca. 1880-A rare and hard to find system cane for the painter on the move, first compartment holds a glass 7" tube with a copper stopper for holding of water, center of shaft has a locking mechanism which exposes different areas to mix paints, end of cane unscrews to hold the paint brushes, natural bamboo shaft with original patina and a metal ferrule "for the water color artist on the go." O.L. 35"

**\$1,500-\$2,500**

143.





146.

#### 144. Masonic Sword Cane

Ca. 1900-A Spencer & Co. London ceremonial 29" sword cane, gold gilded handle, Masonic emblem and flowers etched on blade, leather covered shaft and a brass ferrule. O.L. 35 1/4"

**\$900-\$1,400**

#### 145. Masonic Sword Cane

Ca. 1920-A Masonic Sword cane by Wilkinson of London with a 28" ornate blade with Masonic emblems, crosses, etc., ornate metal and silver wire wrapped handle, inner scabbard, silver metal handle, wrapped leather shaft and a metal ferrule. O.L. 36"

**\$800-\$1,200**



147.

#### 146. Cowboy Saloon Gal's Cane

Ca. 1900-A heavy nickel silver cast handle of a saloon lady's leg, exotic wood shaft and a metal ferrule.

H. 3 1/2" x 2 1/2", O.L. 34 1/4"

**\$250-\$350**

#### 147. Tobacco Pipe System Cane

Ca. 1940-A signed Coventry briar pipe, white metal collar, hardwood shaft and a metal ferrule.

H. 1 1/2" x 3 1/4", O.L. 35 1/4"

**\$300-\$400**

144.



145.



**148. Handsome Cab Whistle Cane**

Ca. 1935-A signed British brass cab whistle with a nice deep tone, brass collar, exotic wood shaft and no ferrule. H. 4 ½" x 1 ½", O.L. 36"

**\$400-\$500**

**149. Lion and Ivory Dress Cane**

Ca. 1790-An early carved handle with ivory attachments of a lion with two color glass eyes, one small ivory button missing, white metal collar, hardwood shaft and a 5 ½" ferrule. H. 6" x 3 ½", O.L. 36"

**\$500-\$700**

**150. Civil War Brigadier General James R. Slayton Cane**

Late 19th- A horn handle presentation cane with a 24' x 24" scroll with bell bronze mounts, exotic wood shaft and a metal ferrule. H. 3 ½" x 2", O.L.- 36"

**\$600-\$1000**

**151. Pepper Box Dagger Gun Cane**

Late 19th Century- A horn handle "Kols" four shot pepper box (Prob. 22 cal.) with a removable 6" blade, near mint in working condition, silver metal collar, malacca shaft, and a horn ferrule.

H. 1.5" x 14" O.L. 36"

**\$1,500-\$2,500**



148.



149.



150.

150.



151.





152.

### 152. Centerfire Gun Cane

Ca. 1885-A 25 cal. Centerfire gun cane which has a compartment handle which works as a blowgun mouth piece, the air in the mouth piece forces a firing pin to strike the bullet, twist locking mechanism for shell, bamboo shaft and a removable metal ferrule. O.L. 34 ½"

**\$1,200-\$1,800**



153.

### 153. Shotgun Horn Cane

Ca. 1885-A large twigspur horn handle, silver metal collar, pushbutton trigger which works but needs some tweaking, breech loading shotgun cane, malacca shaft and original removable ferrule. H. 4 ½" x 6", O.L. 35 ½"

**\$1,400-\$1,800**

### 154. Shotgun Cane

Ca. 1860-An American walnut handle single fire small cal. gun cane, serial #1491, trigger mechanism needs work to operate properly, hardwood shaft and an original removable ferrule. H. 4" x 3 ¼", O.L. 33"

**\$1,200-\$1,800**



154.

**155. Sliding Chamber Gun Cane**

Ca. 1885-A very unusual sliding chamber shotgun cane, 20 ga., drop down trigger which needs spring work, vertical safety button bamboo shaft and an original removable tool ferrule. H. 4 ½" x 4 ½", O.L. 33 ½"  
**\$2,000-\$2,500**

155.



**156. Under Hammer Shotgun Cane**

Ca. 1870-A breech loading painted grained shotgun cane in working condition, detachable walnut stock with metal engravings and silver cartouche and removable ferrule. H. 3 ¼" x 6", O.L. 36", stock 10"  
**\$1,400-\$1,800**

156.





158.



**157. Chinese Ivory Snake Scholar Stick**

Ca. 1880-A monumental scholar stick with an attached ivory raccoon, a 24" ivory segmented snake, 3" thick natural grown shaft and a large metal ferrule. O.L. 39"  
\$800-\$1,200

**158. Folk Art Cane**

Ca. 1925-The best Mexican folk art cane that we have seen, elk antler handle with a carved eagle, various carvings including an explorer, Indian, animals and trees, hardwood shaft and a horn ferrule. H. 5" x 2 1/2", O.L. 37"  
\$200-\$300

157.



**159. Cockatoo Carved Cane**

Ca. 1930-A well painted and carved head with two color glass eyes, retains 95% of original paint, malacca shaft and a horn ferrule. H. 4" x 2 1/2", O.L. 37"  
\$400-\$600

**160. Chicks Stick**

Ca. 1940-A carved wooden handle with two baby chicks eating a worm, large ornate carved collar, attached hiking medallions, natural branch shaft and a pike metal ferrule. H. 3 1/2" x 3", O.L. 37"  
\$300-\$500

160.



159.





**161. Anti Semitic Stanhope Cane**

Ca. 1925-A carved stag handle with a nude French Stanhope with a rear view of a nude female, carved bearded man atop, silver metal collar, bamboo shaft and a metal ferrule. H. 5 ½" x 4", O.L. 36"

**\$800-\$1,000**

**162. Bull Penis Cane**

Ca. 1930-A bull penis which has a metal rod inserted for stability and no ferrule. O.L. 33 ½"

**\$200-\$300**

**163. 1934 World's Fair Cane**

Aluminum and copper example in near mint condition, the most difficult Chicago World's Fair cane to find. O.L. 36"

**\$300-\$450**

**164. Horn Exotic Bird Cane**

Ca. 1935-A carved horn and painted bird with two color glass eyes, silver metal collar, malacca shaft and a metal ferrule.

H. 4 ¼" x 4 ½", O.L. 36"

**\$400-\$600**



161.

163.



164.



162.

166.



165.



### 165. Pewter Dress Cane

Ca. 1935-A cast pewter handle with 6 different faces, exotic shaft and a stopper ferrule. H. 2 1/4" x 1 1/4", O.L. 34" \$200-\$350

### 166. Grain Testing System Cane

Ca. 1900-A stag handle, working and rotating brass shaft which was used as a quality of grain tester, by placing the open shaft into the grain bin and turning the handle the shaft closes and pulls 3 samples at different depths, metal ferrule. H. 4 1/2" x 2 1/2", O.L. 37" \$500-\$600

168.



### 167. Measuring System Cane

Ca. 1885-A container cane which holds a round 36" stick on one side and the other side measures in fractions of a yard, silver metal collar, ivory handle atop, malacca shaft and a metal ferrule. H. 1 1/4" x 1/2", O.L. 37 1/2" \$400-\$600

### 168. Tri-Pod Camera Cane

Ca. 1920-Ebonized wood handle, silver metal collar marked G.E.S., Dresden, fine working condition, metal and wood shaft, removable metal ferrule. H. 5" x 5", O.L. 36" \$400-\$500

167.



**169. Mallard Duck Dress Cane**

Ca. 1940-A carved hardstone duck, silver metal collar, exotic wood shaft and a metal ferrule.

H. 3 ½" x 1 ¾", O.L. 35 ½"

**\$400-\$600**



169.

**170. Cigarette System Cane**

Ca. 1920-A bamboo handle with a metal cylinder attached which holds 9 cigarettes, working condition but bamboo has a few splits and a metal ferrule. H. 1 ½" x 1 ½", O.L. 35"

**\$350-\$500**



172.

**171. Scottie Dog Dress Cane**

Ca. 1930-A figural handle with a pair of Scottie dogs, both with glass eyes, natural branch shaft and no ferrule. H. 3 7/8" x 2 ¼", O.L. 36"

**\$250-\$350**



171.

**172. Flashlight System Cane**

Ca. 1925-A nice example of this system stick which is all original, elm wood handle and shaft and metal ferrule. H. 5" x 6 ½", O.L. 36"

**\$400-\$600**



170.

**173. Asian Skull and Snake Cane**

Ca. 1900-A carved bone skull and snake entwined in a natural branch shaft with a metal ferrule. O.L. 36"

**\$250-\$350**



173.





175.



177.



178.



176.

**174. Victorian Twisted Horn Cane**  
Ca. 1875-A nice twisted horn with a very ornate silver end cap and matching ornate silver plated collar, thick ebonized shaft and a metal ferrule.  
H. 3 ½" x 5", O.L. 35 ½"  
**\$300-\$450**

**175. Flashlight system cane**  
Ca. 1915-A hickory crook handle, large brass collar, thick exotic wood shaft and a brass flashlight ferrule.  
H. 4 ¼" x 6", O.L. 36"  
**\$400-\$500**

**176. Philippine Silver Dress Cane**  
Dated 1909-A silver presentation atop, with island symbols and an engraving from "N. W. Gilbert", thick mahogany shaft and a metal ferrule.  
H. 1 ½" x 2 ¼", O.L. 36"  
**\$250-\$350**

**177. Oosik Eskimo Cane**  
Ca. 1910-A traditional carved walrus penis cane with a hand holding a serpent, hardwood shaft and a metal ferrule. H. 5" x 2", O.L. 35 ½"  
**\$300-\$500**

**178. "Roaring 20's" Flapper Cane**  
Ca. 1925-A large carved exotic wood head on a bone upper collar, copper collar, large exotic wood shaft and a metal ferrule. H. 1 ¾" x 6", O.L. 36 ½"  
**\$500-\$700**



174.

**179. Ivory Sewing System Cane**

Ca. 1900-A sewing compartment cane which holds 3 ivory bobbins, ivory thimble and a needle, walnut shaft and a metal ferrule.

H. 1 ½" x 2", O.L. 36"

**\$400-\$650**

**180. American Eagle Ivory Cane**

Dated 1887-A carved ivory handle with an American Eagle standing on a shield, ornate presentation gold-filled collar, malacca shaft and a metal ferrule.

H. 4" x 4", O.L. 34 ¾"

**\$500-\$600**

**181. Scrimshaw Cork Screw Cane**

Ca. 1910-A large bone and ivory scrimshaw handle which holds an early corkscrew, silver collars, mahogany shaft and a horn ferrule.

H. 4 ½" x 1 ¼", O.L. 36"

**\$600-\$900**

**182. Carved Folk Art Cane**

Ca. 1875-An unusual carved ram with various carved fruits, exotic hardwood shaft and a metal ferrule.

H. 6 ¼" x 2 ½", O.L. 36 ½"

**\$300-\$400**

**183. Horn Dress Cane**

Ca. 1865-A large horn handle, ornate hallmarked British coin silver collar, 1 ¼" malacca shaft and no ferrule.

H. 4 ¾" x 1 ½", O.L. 33 ½"

**\$250-\$350**



179.



180.



181.



183.



182.





185.



184.



186.



187.



188.

#### 184. Stag Eagle Day Cane

Early 20th Century-A carved elk antler eagle with two color glass eyes, original iron collar, twigspur shaft and a metal ferrule.

H. 6" x 1 3/4", O.L. 35 3/4"

\$400-\$600

#### 185. Ivory Bulldog Cane

Ca. 1890-Carved ivory bulldog with glass eyes and a long hat, ribbed silver metal collar, bamboo shaft and a metal ferrule.

H. 3 1/4" x 1 3/4", O.L. 35 1/2"

\$350-\$450

#### 186. Sterling Gambler's Cane

Ca. 1910-A large signed sterling handle with the maker's mark C.E.J. which doubles as a die cup, sterling collar which has a scrimshawed bone clipper ship within, maple shaft and a horn ferrule. H. 3 1/2" x 1 1/2", O.L. 35 1/2"

\$600-\$900

#### 187. G.A.R. Military Cane

Late 19th Century-Cast pewter handle with G.A.R. symbols, hardwood shaft and a metal ferrule. H. 2 3/4" x 2 1/2", O.L. 36"

\$200-\$300

#### 188. Kaiser Franz Josef I. Jubilee Cane

Ca. 1908-A heavy cast German silver jubilee cane for the Keiser, hallmarked K.H., dated 1848-1908, ebonized shaft and no ferrule. H. 4 1/2" x 4", O.L. 36"

\$250-\$350



**189. Horse Measure**

**System Cane**

Ca. 1900-A Netter horse measure cane with a brass extension and non working level, coin silver hallmarked hatch, thick malacca shaft and a 3" brass ferrule.

O.L. 37"

**\$300-\$400**

**190. Aesthetic Silver-Plated Cane**

Ca. 1880-A nice floral casting with hammered detail work, thick exotic wood shaft and a metal ferrule. H. 4 1/2" x 2 1/2", O.L. 36"

**\$200-\$300**

**191. Art Nouveau Silver Nude Cane**

Ca 1890-A silver cast full frontal nude which appears to have French hallmarks, high relief and in fine condition, ebony shaft and a stopper ferrule.

H. 5" x 5", O.L. 36"

**\$800-\$1,200**

**192. Carved Terrier Dog Cane**

Ca. 1930-A carved Black Forest dog with two color glass eyes, with minor chips on ear, bakelite polka dot collar with chipping, thick malacca shaft and a metal ferrule.

H. 2" x 2 1/4", O.L. 33 1/2"

**\$250-\$350**

**193. Horn Dress Cane**

Ca. 1885-A nicely formed horn handle which is fitted for the left hand, ornate gold-filled presentation collar, ebony shaft and a metal ferrule.

H. 4 1/2" x 2 1/2", O.L. 35"

**\$250-\$350**



194.



**194. Silver Hound Dress Cane**

Ca. 1930-A cast silver handle but unsigned, two color glass eyes, leather collar, natural hardwood vine shaft and a metal ferrule.

H. 2 1/2" x 2 1/2", O.L. 37"

**\$300-\$500**

196.



**195. Ivory and Wood Automation Bulldog**

Ca. 1910-A carved bulldog with two color glass eyes and ivory ears, mouth opens by pressing a spring button above the neck, also known as a glove holder, silver collar, finely carved upper walnut shaft and a metal ferrule.

H. 2 1/2" x 3 1/2", O.L. 36"

**\$500-\$700**

195.



197.

**196. Horn Dress Cane**

Ca. 1930-A complete horn dress cane from top to bottom except for a small gold-filled hallmarked unreadable collar and no ferrule.

H. 4 1/2" x 4 1/2", O.L. 34 1/2"

**\$400-\$600**



**197. Tusk Dress Cane**

Dated 1921-A wart hog tusk handle, sterling presentation collar, exotic wood shaft and no ferrule.

H. 4 1/4" x 3", O.L. 33"

**\$250-\$350**

198.



**198. Billy Club/Sword Cane**

Mid 20th Century-A heavy silver-plated hound handle white metal collar, attached to the handle is a 15" spring Billy club, in the top compartment, the center of the cane pulls apart to expose a 11 1/2" 4-sided blade, exotic wood and brass shaft and a horn ferrule.

H. 3 1/2" x 2 1/4", O.L. 36"

**\$500-\$700**



**199. Ivory Compartment Cane**

Ca. 1900-A carved ivory compartment cane which unscrews to produce a bronze container, probably for opium, small brass collar, malacca shaft and a horn ferrule.

H. 1 ½" x 1 ½", O.L. 35 ½"

**\$350-\$500**

**200. Golf Sunday Cane**

Ca. 1890-An unusual substance, not known to us, of a faux tortoise golf Sunday cane, small bone collar, ebony shaft and a horn ferrule.

H. 4 ½" x 3 ½", O.L. 36 ½"

**\$400-\$600**

**201. "Hands On" Dress Cane**

Ca. 1875-A large ornate carved bone collar with an antler handle, small black bone disc, malacca shaft and a metal ferrule.

H. 3 ½" x 6", O.L. 32 ½"

**\$300-\$400**

**202. Manicure System Cane**

Ca. 1925-A brass compartment cane which holds a pair of scissors and a small knife, large brass collar, stained hardwood shaft and a brass ferrule.

H. 5" x 5/8", O.L. 38"

**\$300-\$400**

**203. Ivory Parrot Cane**

Ca. 1900-A very nicely carved ivory handle with two color glass eyes, ornate carved ivory collar with birds and flowers, slight exotic wood oval shaft and a metal ferrule.

H. 3 5/8" x 3 5/8", O.L. 36"

**\$500-\$600**

200.



199.

202.



201.



203.







205.



204.

**204. Folk Art Snake Cane**

Ca. 1890-Carved horn handle gold filled ornate collar, attached coiled and painted snake, hardwood shaft an no ferrule.

H. 4 ½" x 1 ½", O.L. 35 ½"

**\$250-\$400**



206.

**205. Lyon Silver Dress Cane**

Ca. 1910-A Crawfordsville Indiana presentation cane with high relief sterling flowers and foliage, ebonized shaft and a horn ferrule.

H. 3 ¼" x 5 ½", O.L. 35 ½"

**\$400-\$600**



**206. Horn Dress Cane**

Ca. 1895-A horn handle with gold-filled ornate end caps, gold-filled ornate collar engraved "J. Ridehaugh", ebonized shaft and a metal ferrule. H. 5" x 2 ½", O.L. 36"

**\$250-\$350**



207.

**207. Ivory Flick Stick**

Ca. 1890-An ivory handle with a 4" working flick mechanism, hardwood shaft, engraved hallmarked British collar and a horn ferrule, small separation in handle.

H. 1 ½" x 1 ½", O.L. 34"

**\$700-\$1,000**

**208. Sword Cane**

Ca. 1920-A Chinese 16 ½" sword cane with a carved bone dragon handle, brass collar, finished bamboo shaft and a metal ferrule.

H. 1" x 7", O.L. 35"

**\$500-\$800**



208.

**209. Bone Hound Sword Cane**

Ca. 1890-A carved bone handle with two color glass eyes, ornate silver collar, 13" four sided push button blade, bamboo shaft with splitting and a horn ferrule.

H. 4" x 5", O.L. 37"

**\$700-\$900**

**210. Irish Greene Royal Hussars Sword Cane**

Ca. 1930-A silver metal ball handle, two silver metal collars, 17" four sided blade, ebonized shaft and a metal ferrule.

H. 2" x 3", O.L. 36"

**\$500-\$600**

**211. Schnauzer Wood Cane**

Ca. 1930-A carved one piece cane with two color glass eyes, minor chipping on ears, original bark on shaft and a metal ferrule.

H. 3" x 3", O.L. 36"

**\$400-\$600**

**212. Vesta Match Cane**

Ca. 1890-An ivory top bamboo handle with a brass striker attached, white metal collar and push button mechanism, bamboo shaft and a horn ferrule.

H. 4 1/2" x 1 1/2", O.L. 36"

**\$350-\$500**

**213. Carpenter's System Cane**

Ca. 1900-A silver top compartment cane which holds a rule, various tools and a working level, exotic wood handle, silver collar, exotic wood shaft and a metal ferrule.

H. 12" x 1 1/2", O.L. 34 1/2"

**\$450-\$600**





215.

**214. Ivory Owl Cane**

Ca. 1870-A carved ivory owl with two color glass eyes, original braided leather lanyard, small bone collar, London cartouche, bamboo shaft and a stopper ferrule.

H. 2 3/4" x 1 3/8", O.L. 42"

**\$700-\$1,000**



216.

**215. Horse Measure Cane**

Ca. 1890-A bell bronze figural horse handle, working level horse rule, hardwood shaft and a metal ferrule.

H. 6 1/2" x 4", O.L. 38"

**\$400-\$600**



214.

**216. Art Nouveau Dress Cane**

Ca. 1890-A zinc or pewter hollow cast partial nude handle, hardwood shaft and a metal ferrule.

H. 4" x 4 1/2", O.L. 35"

**\$300-\$450**



217.

**217. Chinese Bone Cane**

Ca. 1900-A carved bone handle with a family of baboons with beaded eyes, dark malacca shaft and a horn ferrule.

H. 1 1/4" x 3 1/4", O.L. 36"

**\$350-\$500**



218.

**218. Chinese Bone Dress Cane**

Ca. 1900-A carved bone handle with two male characters, silver and gold-filled end cap atop, silver and gold-filled collar, thick bamboo shaft and a horn ferrule.

H. 4 3/4" x 1 1/4", O.L. 36"

**\$350-\$450**



**219. Ivory Dress Cane**

Ca. 1900-A carved ivory handle with an ornate silver end cap, silver bottom end cap with minor damage, silver collar, exotic wood shaft and a metal ferrule.

H. 8" x 1 ¼", O.L. 38"

**\$300-\$400**

**220. Ivory and Silver Dress Cane**

Ca. 1900-A carved dog and maybe a raccoon attached to a signed sterling ornate handle, small silver collar, leather lanyard, ebonized shaft and a strange wood ferrule.

H. 5" x 2 ½", O.L. 32 ¼"

**\$400-\$700**

**221. Sterling Horse Dress Cane**

Ca. 1930-A high relief silver handle with a jeweled eye, faux bamboo ebonized shaft and a metal ferrule.

H. 1 ¼" x 1 ½", O.L. 35 ½"

**\$250-\$350**

**222. Roosevelt Political Cane**

Ca. 1934-A World's Fair souvenir from the Chicago World's Fair in mint condition, retains Century of Progress sticker on ebonized shaft and no ferrule.

H. 1 ¼" x 2 ¾", O.L. 37"

**\$200-\$300**

**223. McKinley Political Cane**

Ca. 1898-A fine example of a presidential McKinley protection cane, hardwood shaft and a stopper ferrule.

H. 3 ½" x 1 ¾", O.L. 34 ½"

**\$200-\$300**



220.



219.



221.



222.



223.

225.



**224. McKinley Political Cane**

Ca. 1898-A McKinley free coinage presidential campaign cane in near mint condition, ebonized shaft and a metal ferrule-H. 3 ½" x 2", O.L. 36"  
\$200-\$300

**225. Brevete Watch Cane**

Ca. 1920-A presentation watch cane with an ornate silver metal handle, silver metal collar, exotic wood shaft and a horn ferrule, needs repair-H. 1 ½" x 1 ¾", O.L. 34"  
\$400-\$700

227.



**226. Shepherd's Crook Cane**

Ca. 1900-A bell bronze handle which is mostly copper, signed "9 Tutill City Road London", a quality and timeless casting, large copper collar, 1 ¼" malacca shaft and a metal ferrule-H. 1 ¼" x 5/8", O.L. 36 ½"  
\$500-\$700



**227. Harris System Cane**

Ca. 1900-A unique system cane with a push button handle that works the ferrule mechanism, brass signed handle, iron spring loaded ferrule, pyro decorated hardwood shaft and a digging/grabbing ferrule mechanism-H. 1 ¼" x 5/8", O.L. 36 ½"  
\$500-\$600

224.

**228. Chinese Folk Cane**

Ca. 1885-A one piece carved natural branch with what appears to be a smiling Buddha and a brass ferrule-O.L. 36"  
\$200-\$300



226.



228.

**229. Bamboo Sword Cane**

Ca. 1890-A bamboo sword cane with brass tacks, silver belt buckle collar, 27" four sided unsigned blade, bamboo shaft and a bone ferrule. H. 5" x 6", O.L. 34 1/2"  
**\$400-\$600**

**230. Race Horse Horn Cane**

Ca. 1885-A well carved horse head with two color glass eyes, ornate gold-filled collar, painted twig spur shaft and a metal ferrule. H. 4 1/2" x 2 1/4", O.L. 34 1/2"  
**\$500-\$700**

**231. Stag Eagle Cane**

20th Century-A large elk antler with a high relief eagle's head, faux bamboo hardwood shaft and a metal ferrule. H. 6" x 2 1/2", O.L. 36"  
**\$300-\$500**

**232. Amethyst Dress Cane**

Ca. 1925-An Art Deco lady or child's cane, faceted and beaded crystal collars, ebony shaft and a metal ferrule. H. 1" x 3", O.L. 28"  
**\$500-\$800**

**233. Tiger Eye Dress Cane**

Ca. 1935-A full faceted spear, ornate silver collar, ebony shaft and a metal ferrule. H. 1 1/2" x 1 1/2", O.L. 32"  
**\$300-\$500**



230.



232.

231.



229.



233.



235.



**234. Tiger Eye Dress Cane**

Ca. 1930-A fine symmetrical stone, coin silver crown support, coin silver British collar, exotic wood shaft and a metal ferrule. H. 1 ½" x 1 ½", O.L. 37 ½"

**\$350-\$500**

**235. Lot of Three System Canes**

A modern watch cane made to look old, a 1920's battery operated torch, enamel and silver compartment cane with mirror with minor damage to rim

**\$500-\$700**

**236. Cloisonné Pocket Watch Cane**

Early 20th Century-A nice compartment pocket watch cane with the watch needing reassembling, silver dial, hinged case, silver metal collar, malacca shaft and a metal ferrule.

H. 2" x 1 ¼", O.L. 36"

**\$300-\$500**

**237. Cloisonné Compartment Cane**

Ca. 1925-A Chinese cloisonné compartment cane, hinge needing some repair, silver metal collar, thick ebony shaft and a metal ferrule.

H. 2" x 2", O.L. 36"

**\$250-\$350**

**238. Silver Sunday Stick Cane**

Ca. 1920-A hallmarked German 800 silver golf Sunday Stick Cane with a few dents and dings, ebonized shaft and a horn ferrule. H. 3 ¾" x 3 ½", O.L. 36"

**\$250-\$350**

234.

238.



237.

236.



239. Four Piece Cane Lot  
\$250-\$400

240. Four Piece Cane Lot  
\$250-\$400

241. Two Piece Ivory Cane Lot  
\$300-\$500

242. Five Piece Silver Dress Cane  
Lot  
\$400-\$700

243. Three Piece Sword Cane Lot  
\$500-\$1,000



239.



241.



240.



242.



243.



244.

**244. Three Piece Gold-Filled Dress Cane Lot**  
\$500-\$600

**245. Three Piece Lot**  
Two bone, one composition  
\$400-\$600

**246. Two Wild Boar's Tusk Canes**  
\$400-\$600

**247. Four Folk Art Canes**  
\$300-\$500

**248. Two Stag Antler Canes**  
\$350-\$500



245.



246.



247.



248.



**249. Three Ivory and Silver  
Dress Canes**  
\$400-\$700



249.

**250. Three Compartment  
System Canes**  
Two empty and one with  
a tool kit  
\$400-\$500



250.

**251. Five Piece Cane Lot**  
\$400-\$500

**252. Three Ivory Canes**  
\$400-\$600

**253. Six Various Shafts**  
\$250-\$400



252.



251.

253.





254.

**254. Three Silver-Plated  
Decorative Canes**  
\$300-\$500

**255. Four System Canes**  
One modern telescope, tattered  
flag, broken watch cane and a  
Franko-British exhibition pipe  
cane missing its stem.  
\$300-\$500

258.

**256. Group of Five Asian  
Canes**  
\$300-\$500

255.



**257. Fan Shaped Cane Stand**  
A cherry 12 cane stand in nice  
condition. 29" x 30" x 5"  
\$500-600

**258. Bentwood Casino Cane/  
Umbrella Stand**  
An Art Deco mahogany stand  
with cast metal paw feet,  
probably hold about 45-50  
canes, fine design with great  
lines. 15" x 13.5" x 29"  
\$500-\$600



256.

257.



**259. Oak Cane Display Case**

A antique signed Excelsior golden oak store display case made in Quincy , Il., nice stepped bottom, stick and ball divider, working castors, 72 cane separations but could hold twice that many, original condition.

29" x 29" x 50"

**\$1,500-\$3,000**

**260. Oak Cane Case**

An antique golden oak smaller case in original condition by M. Winter Lumber Co, of Sheboygan Ws., curved glass has been replaced with plexiglas but looks good, also a lock has been put on the front, 16 holes for canes. 14.5 x 19" x 48"

**\$800-\$1,200**

**261. Ivory Parrot Cane**

Ca. 1900- A carved ivory bird with two color glass eyes, no collar, hardwood shaft and a bone ferrule.

H.-6 ¼' x1 ½', O.L.- 37"

**\$600-\$800**

259.



260.



261.







Kimball M. Sterling, Inc. (TFL-1915)  
125 West Market Street  
Johnson City, Tennessee 37601  
kimballsterling @ earthlink.net  
423.928.1471

Photography by James Price

Catalog Design by KT Design, LLC  
[www.kristaft.com](http://www.kristaft.com)

Member National Auctioneers Association  
© Copyright 2013 Kimball M. Sterling, Inc.

