

KIMBALL M. STERLING, INC.
PRESENTS

Spring
**CANES
AUCTION**



BRASS HANDLE HARDWOOD BRASS AND IRON FERRULE CIRCA 1800 MODERN SHAFT
ION CANE
IVORY
ART COLLECTIBLE
EARLY 18TH CENTURY
FERRULE HORN COLLAR C
RADITION UNIQUE SHAFT CARVED FOLK ART
WHIMSY NATIVE AMERICAN MODERN EXAMPLE
AL ORNATE ORIGINAL
CANE SHAFT
FINE JAPANESE BRASS COLLAR
DRESS WOODEN HANDLE
KIMBALL
CIRCA 1900 LATE
SPRING CANE COLL
ONE PIECE DRESS CANE
LATE VICTORIAN KIM

SATURDAY, MAY 22 2010

www.auctionauction.com

KIMBALL M. STERLING, INC.

Dear Cane Enthusiast,

I am happy to announce the release of a new and exciting book
THE PEARSON CANE COLLECTION.

It is a 210 page, full color hardback book highlighting the World class collection of Bob Pearson. The book has been written by Youssef Kadri and is a must addition to your library.



\$130.00

+\$6.00 shipping

The book may be
ordered by phone
423.773.4073
or email

kimballsterling@earthlink.net

Kimball & Victoria Sterling
Present An

Antique Cane Auction

Saturday,
May 22nd, 2010

11:00 a.m. est

Preview

Friday, May 21st

12:00 p.m. - 5:00 p.m. E.S.T.

Saturday, May 22nd

9:00 A.M. E.S.T.

or by appointment anytime before the auction

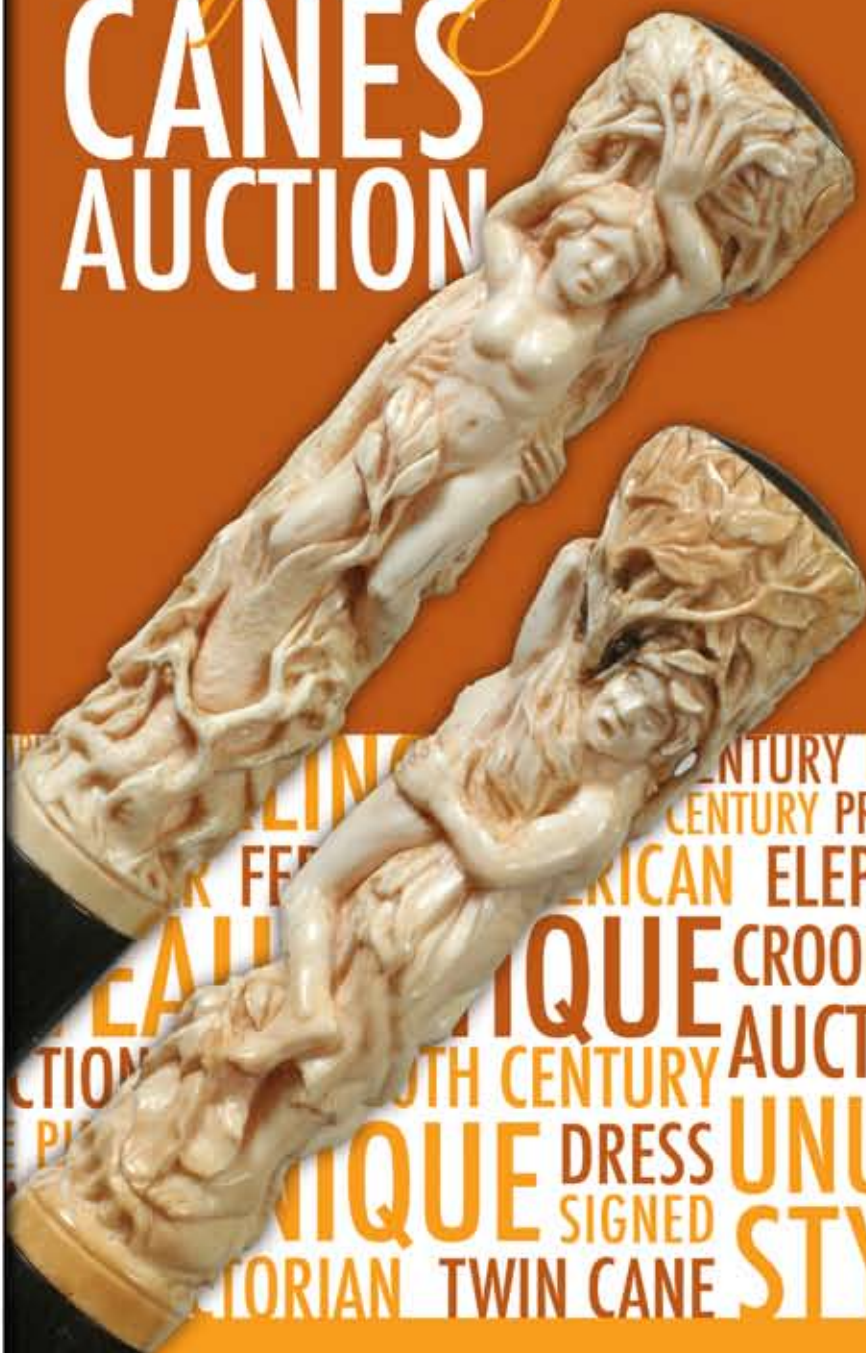
Live on the internet at
LIVEAUCTIONEERS.COM

Kimball M. Sterling Auction Gallery
125 West Market Street
Johnson City, Tennessee 37601
kimballsterling @ earthlink.net
423.928.1471

Member National Auctioneers Association

www.auctionauction.com

Spring CANES AUCTION



TERMS & CONDITIONS

1. Cash, check, MasterCard, or Visa. A 15% buyers' premium will be added to the hammer price as part of the sale price for in-house, phone, and absentee bidders. We reserved the right to hold purchases until the buyers checks clears if buyer is not known by us. Bank letter of credit is acceptable. A 20% buyers fee will be charged to internet bidders.

2. Mail or phone bids are accepted; the firm may require a deposit.

3. Kimball M. Sterling, Inc. has endeavored to catalog and describe the property correctly. All property is sold as is and neither the auction company nor the consignor will be responsible for descriptions, genuineness, provenance or condition of the property. No statement in the catalog made orally at the sale or otherwise shall be deemed to be a warranty, representation, or an assumption of liability.

4. In the event of any dispute between bidders, the auctioneer shall have total discretion to determine the successful bidder, in which his determination shall be final or to re-offer and resale the article in dispute. Title of the item or items purchased by the bidder will pass at the fall of the gavel and declaration of bidder. This is not an approval auction. All measurements are approximate.

5. Principal auctioneer: Kimball M. Sterling #2467. B. Elizabeth Sterling, auctioneer # 5757. Firm Kimball M Sterling Inc. TFL-1915

6. Bidders may bid live on the Internet by visiting <http://www.auctionauction.com> You may also view the auction at this site and bid by phone.

7. Communications:
Telephone 423-928-1471.
Fax 423-928-2816.
Cellular 423-773-4073, 423-773-4072.
Email kimballsterling@earthlink.net

8. Worldwide shipping available. International sales which are protected by C.I.T.E.S. permits can also be arranged. Estimated bidders cost per cane is \$255.00 for permits and inspections plus the shipping cost. A permit may also be required by your country. Our packing service is free but the buyer must pay postage and insurance fees.

9. Kimball M. Sterling, Inc. will not be held responsible for bids not received in time for the auction or slow Internet bids. We will not be responsible for items left on our location for over 30 days.

10. Sale will be conducted at 125 West Market Street, Johnson City, Tennessee. 37604. Announcements day of the sale take precedence over pre-sale advertising. Any litigation that pertains to this auction will be conducted in the county of Washington in Tennessee and is agreed upon by registering for this auction.

11. Airport is the Tri-Cities Airport, which is approximately 20 miles from the gallery. Internet catalog and live bidding available at www.auctionauction.com Best Western Hotel: 423-282-2126. A very fine hotel which offers Sterling Auction a discount rate is the Carnegie Hotel 1216 W State of Franklin Rd, (423) 979-6400.

12. Please call for condition report on sale lots or email us. We do send out multiple photos by email of any lot in the auction. By registering for this auction you accept the terms and give Kimball M. Sterling auctions the right to charge your credit card on file for purchases and shipping, which you have entered on your registration.

13. Parking service is free.



3.



1.



1. Trophy Cane Stand

1935-An actual elephant's foot which has been made into a cane stand which will hold 13 canes-17" x 18"
\$600-\$900

2. Oak Cane Case

Circa 1900-A 48 compartment H. Kruse of Cincinnati store display case for canes. H. 41", W. 26", D. 11"
\$1,000-\$1,500

3. Oak Cane Case

Circa 1975-A 56 compartment cane case in golden oak-45" x 36" x 12"
\$500-\$700



2.

4. Coin Purse Cane

20th Century-Carved wooden Indian Chief, signed sterling collar, rosewood shaft and a horn ferrule-H. 2" x 2 1/2", O.L. 35 1/4"
\$200-\$300

5. Coin Purse Cane

Art Deco-A French two compartment coin purse handle, engraved "souvenir small D Anvers", silver purse and collar, ebony shaft and a horn ferrule-H. 2" x 2 1/2", O.L. 36"
\$500-\$700



4.



5.



6. Sterling Vinaigrette Cane

Circa 1900-A sterling handle with floral panels, sterling collar, rich malacca shaft and a horn ferrule-H. 2 ¾" x 1", O.L. 35 ½"

\$400-\$500



6.

7. Petite Silver and Ivory Cane

Art Nouveau-A silver overlay ivory handle done in great detail, petite malacca shaft and a horn ferrule.

Dynamite does come in small packages.-H. 3 ¼" x 1", O.L. 34 ¼"

\$600-\$800



7.

8. Lyon Sterling Dress Cane

Circa 1880-A fancy signed Lyon handle, briarwood shaft and a metal ferrule-H. 2 ½" x 4", O.L. 35"

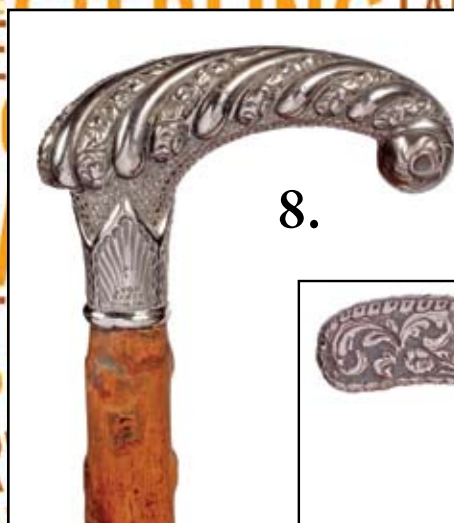
\$300-\$500



9. Silver Sword Cane

Circa 1900-A silver repousse handle, ornate, 28" blade with locking mechanism in near mint condition, bamboo shaft and a bi-metal ferrule-H. 4" x 2", O.L. 36 ¼"

\$500-\$700



8.

10. Ivory Watch Cane

Late 19th Century-Early rose gold watch with one hand inlaid into an ivory disc, brass collar, ebonized shaft and a brass ferrule-H. 1 ¾" x 1 ½", O.L. 35 ½"

\$400-\$600



10.



9.





11.

12.

13.



11. Gun Cane

Early 20th Century-A dress gun cane probably a 22 caliber in working condition, plunger operated, ebonized oak shaft and a bi-metal ferrule-H. 4 1/4" x 3 1/2", O.L. 33 1/4" \$800-\$1,200

12. Ornate Sterling Dress Cane

Circa 1900-A very ornate handle with deer and foliage signed H. Schuman, N.Y., hardwood shaft and a brass ferrule-H. 3 1/2" x 1 1/4", O.L. 35" \$300-\$500

13. Flute Cane-20th Century

A faux bamboo flute cane with 11 key holes in the shaft, sterling collar, satin wood handle with an inlaid Continental medallion, and a brass ferrule-H. 1 3/4" x 1 1/2", O.L. 37 1/4" \$300-\$400

14. Victory Dress Cane

Early 20th Century-An American walnut handle which has a 1912 V nickel inlaid to the end cap, sterling belt buckle collar, walnut shaft and a bi-metal ferrule-H. 3 1/2" x 4", O.L. 34 1/4" \$200-\$300

15. Ivory Dress Cane

Art Nouveau-A stylized, probably Austrian, ivory handle which might appear phallic in shape, small silver collar, ebony shaft and a horn ferrule-H. 4" x 3", O.L. 35 3/4" \$300-\$500



15.



14.



16. Ivory Games Cane

Early 20th Century-Carved ivory handle which contains a pair of dice and a gambling spinner, gold metal collar, exotic wood shaft and a horn ferrule-H. 1 1/2" x 1 1/8", O.L. 35 1/2"
\$300-\$500

17. Ivory Knob Dress

Circa 1860-Large ivory knob, massive ebony shaft, and a brass ferrule-H. 2 1/4" x 1 1/2", O.L. 36 1/2"
\$200-\$350

18. Ornate Ivory Dress

Circa 1880-A carved ivory handle which has the "all seeing eye", a Federal Shield which produces an optical illusion of a face of a fierce animal, metal collar, rich malacca shaft and a bi-metal ferrule-H. 4" x 4", O.L. 35 1/2"
\$400-\$600

19. Ivory Sword Cane

Circa 1880-A very ornate carved ivory handle with what appears to be a fox and a wolf, four-sided 12" blade with bluing and gilding, push-button locking mechanism, ornate collar, malacca shaft and a bi-metal ferrule-H. 3 1/4" x 5", O.L. 35 1/4"
\$800-\$1,200



17.



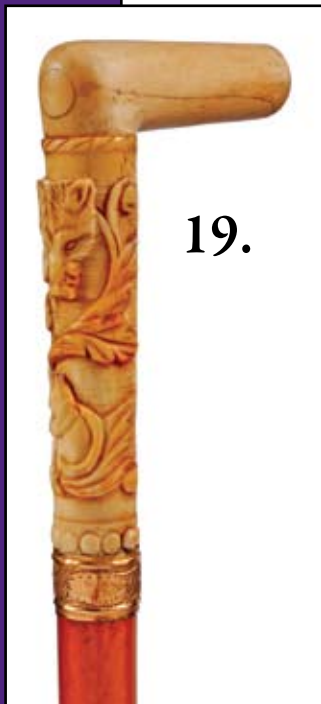
16.



18.



19.





20.



20. Ivory Cat Cane

Circa 1890-An open carving of a mother cat and her kitten with glass eyes, hallmarked British Collar, partridge wood faux bamboo shaft and a bi-metal ferrule. The handle has an inked name of "Frank M. Holts Pander"-H. 5 ½" x 2", O.L. 35 ¼" \$1,500-\$2,500

21. Silver Dress Cane

Circa 1885-An ornate silver handle which is engraved "A Tale of Two Cities Chicago Pittsburg", unreadable maker's mark, signed sterling, ebony shaft and a bi-metal ferrule-H. 4" x 1 ¼", O.L. 36" \$500-\$700

22. Porcelain Dress Cane

Circa 1890-A dress cane done in the Meissen style, two ornate gold collars, rich exotic wood shaft and a brass ferrule-H. 6" x 6 ½", O.L. 35" \$500-\$800

23. Ivory Dress Cane

Circa 1880-A carved ivory handle, signed sterling collar, faux bamboo partridge wood shaft and a bi-metal ferrule-H. 5" x 1 ¾", O.L. 34 ½" \$400-\$600

22.



21.



23.



24. Nautical Whalebone Cane

Circa 1875-A nautical presentation from H. Bigelow to Ashbel Spencer, copper collar, thick whalebone shaft and no ferrule-H. 1 ¾" x 1 ¾", O.L. 33 ½", shaft at the top is approximately 1" in diameter

\$1,500-\$2,200

25. Horse Standard System Stick

Stick

Circa 1880-A Cadillac of this type of cane, stag handle with attached horse heads on each side, boxwood and brass standard by Aston and Mander of London, silver collar, massive malacca shaft and a brass ferrule-H. 4 ¾" x 2", O.L. 36"

\$500-\$1,000

26. Presidential Dress Cane

Dated 1892-The ornate silver and mother of pearl handle has a presentation "From H. W. Minster for the Cleveland vs. Harrison" campaign of 1892, pearl thumb plate has the name "J. Barrett", signed sterling handle, exotic wood shaft and a bi-metal ferrule-H. 4 ½" x 3", O.L. 35"

\$500-\$1,000

27. Silver Overlay Dress Cane

Circa 1885-Ornate acid etched signed sterling top which is overlaid to a twig spur shaft, coiled snake handle and a bi-metal ferrule-O.L. 35"

\$300-\$500

28. Flute System Stick

Early 20th Century-Pummel silver handle which unscrews to expose a Bb Jetel flute, thick malacca shaft and a bi-metal ferrule-H. 2 ½" x 1 ¾", O.L. 34"

\$400-\$600



24.



25.



26.



27.



28.





29.

30.



31.



32.



33.

29. Telescope System Stick

20th Century-A one draw brass telescope, ebonized shaft and a brass ferrule-H. 2" x 2 1/4", O.L. 36"
\$300-\$500

30. Ornate Watch Cane

Late 19th Century-An ornate bronze handle with Roman soldiers, push button opening mechanism, key wind movement, replaced ebony shaft and a metal ferrule-H. 2" x 1 1/2", O.L. 3"
\$500-\$1,000

31. Corn King Cane

Circa 1930-A nice example of this type of cane with original paint and original spurs, with no ferrule - H. 6" x 1 1/2", O.L. 36"
\$200-\$400

32. Pair of Folk Art Canes

Dated 1935-A pair of canes carved by the same hand presented to "Mrs. A. F. McDonald" of Hampton Virginia. The shortest cane is dated 1935 and has a carved head of her daughter and her son whose names are also carved which are Mabel and Charles. The longest cane has her name, 224 Washington Street, "Firm when all else fails", "To commemorate many acts of kindness" and both canes have fully carved shafts.-O.L. 34" and 30"
\$500-\$1,000

33. Folk Art Snake Cane

Circa 1930-A one piece carved and painted snake cane with rhinestone eyes and a rubber stopper-O.L. 36"
\$150-\$300

34. Carved Folk Art Cane

Early 20th Century-A fully carved folk art cane belonging to "Thos. J. Gibson", carved in high relief "2usvulte perdere prius dementa", there are various guns, crosses, flowers, animals, snakes, vegetation carved throughout the shaft and it has no ferrule-O.L. 34"

\$600-\$1,200

35. Horn Sword Cane

Circa 1890-A horse hoof horn handle with an inlaid silver medallion, push button gold filled collar, 28" four-sided etched blade, split malacca shaft and a stopper ferrule. There is some chipping to the back side of the horn handle.-H. 5" x 3 3/4", O.L. 35"

\$400-\$600

36. Dog Automation

Circa 1930-A carved and painted dog head with two color glass eyes, push button lower jaw, leather collar, bamboo shaft and a metal ferrule-H. 1 3/4" x 1 3/4", O.L. 34 1/2"

\$200-\$300

37. Ivory Dress Cane

Circa 1890-A three piece carved handle with a Roman soldier in high relief, metal collar, ebonized shaft and a metal ferrule-H. 3" x 7", O.L. 43"

\$300-\$400

37.



34.



35.



36.





38.

38. Full Ivory Dress Cane

Circa 1900-A segmented full ivory shaft with faux twig spurs and no ferrule-H. 5" x 1 1/2", O.L. 33"

\$800-\$1,000

39. Dieppe Ivory Dress Cane

Circa 1890-A carved ivory handle with flowers and leaves with a blossom in the center of the handle, ebony shaft and a horn ferrule-H. 5" x 1", O.L. 36 3/4"

\$600-\$900

40. Carved Ivory Boy Cane

Circa 1880-A nicely carved head with two color glass eyes, exotic wood shaft and a bi-metal ferrule-H. 1" x 1 1/2", O.L. 33"

\$500-\$600

41. Vertebrae Crutch Cane

Early 20th Century-Shark vertebrae with horn spacers and a horn ferrule-O.L. 35 1/4"

\$200-\$400

42. Gold Dress Cane

Dated 1910-A very fine and ornate gold filled handle, inscribed to "C. N. Snyder 1860-1910", ebony shaft and a bi-metal ferrule-H. 4 1/2" x 2 3/4"-O.L. 35 1/2"

\$300-\$500



39.



40.



41.

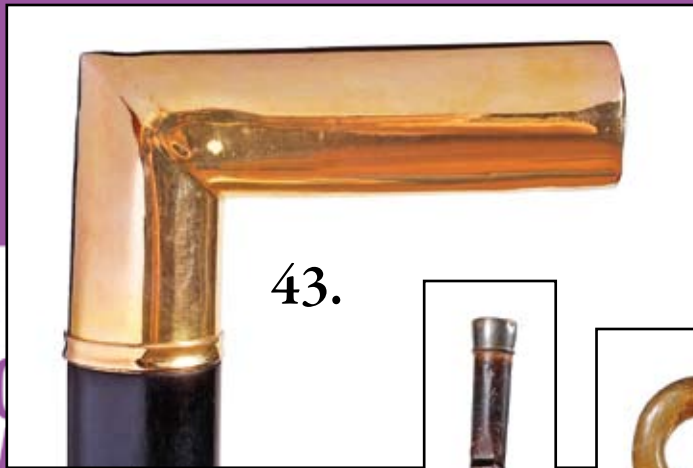


42.



43. Solid Gold Dress Cane

Circa 1910-An unsigned gold handle which has been tested to be 10 karat, ebonized hardwood shaft and a bi-metal ferrule. A prime example of this type of cane.-H. 3" x 2", O.L. 36"
\$600-\$900



44. Flute Cane

Early 20th Century-A French two part metal and malacca shaft, signed metal mouth piece and a bi-metal ferrule-O.L. 34"
\$200-\$300



45. Carved Horn Dress Cane

Late 19th Century-A one piece carved handle, ornate pewter collar with four colored stones, exotic wood shaft and an original ivory ferrule-H. 4 3/4" x 1 1/2", O.L. 35"
\$400-\$600



46. Gold Dress Cane

Dated 1882-An ornate fancy gold filled handle inscribed "R. Smallcon Jan'y Fifth 1832-1882"-H. 1 1/2" x 1", O.L. 35"
\$300-\$400



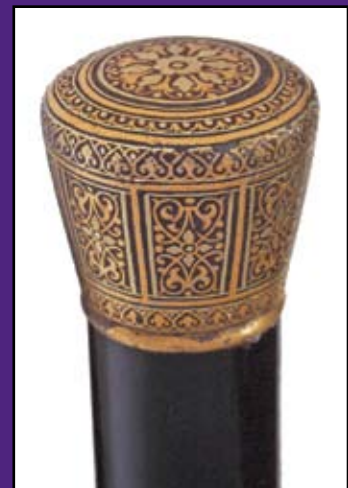
47. Tortoise Dress Cane

Early 20th Century-Solid tortoise shell molded crutch handle, inscribed gold collar, malacca shaft and a bi-metal ferrule-H. 4" x 4 1/2", O.L. 35 1/2"
\$800-\$1,200



48. Damascene Dress Cane

Circa 1890-A finely worked handle, ebony shaft and a bi-metal ferrule-H. 1" x 1", O.L. 33 1/4"
\$300-\$500





49.



49. Erotic Folk Art Automation Cane

Early 20th Century-A folky carved handle which was done with great detail, working lever action penis, ebonized shaft and a brass ferrule-H. 3" x 2 1/2", O.L. 36"
\$2,000-\$3,000



50. Important Nautical Whalebone Cane

Circa 1865-A massive carved and inlaid nautical cane, architecturally designed and carved by a wonderful craftsman, handle has eight panels of mother of pearl and two mother of pearl eyelets, two baleen spacers and a tortoise inlaid disc atop. The whalebone shaft has inlaid mother of pearl pyramids and diamonds which have a wonderful patina of yesteryear. Original stains can still be seen on the whalebone shaft and it has a brass and iron ferrule-H. 9 1/2" x 1 5/8", O.L. 35"
\$5,000-\$6,000

50.



51. Boar's Tusk Dress Cane

Early 20th Century-A well proportioned ivory tusk with a silver end cap, British Hallmarked pointed star collar, ebony shaft and a bi-metal ferrule-H. 5" x 1 ½", O.L. 36"
\$300-\$400



52. Moses Babcock Gun Cane

Mid 19th Century-This is a prime example of a Babcock cane gun and it has its original rabbit end cap. This under hammer percussion is in fine working condition, original finish, original beaded site, and a brass insert and removable ferrule-H. 4 ¾" x 6 ¾", O.L. 34 ½"
\$2,000-\$3,000



53. Ornate Gold Dress Cane

Dated 1884-An unsigned 10 karat gold handle, baleen shaft with ivory twig spurs and a bi-metal ferrule-H. 2 ½" x 3 ½", O.L. 35"
\$500-\$600



55.



54.



56.



57.



58.



54. Mixed Metal Dress Cane

Circa 1890-A signed sterling handle with a copper snake wrapped around the top and center section, rich snake wood shaft and a long bi-metal ferrule-H. 2 ½" x 1 ½", O.L. 36"
\$300-\$500

55. Dress Sword Cane

Mid 20th Century-A nickel silver handle with four inserted green stones, unreadable maker's mark, 19 ½" 6 sided brass pike, hardwood shaft and a brass ferrule-H. 2" x 3 ½", O.L. 38"
\$200-\$250

56. Asian Silver and Gold Dress Cane

Circa 1890-A silver cast handle with various dragons and a gold Asian cartouche, metal collar, malacca shaft and a bi-metal ferrule-H. 5" x 4", O.L. 37"
\$500-\$700

57. Damascene Dress Cane

Circa 1890-A near mint handle, exotic wood shaft and a bi-metal ferrule-H. 1 ¼" x 1 ¼", O.L. 36"
\$300-\$500

58. Horn Sword Cane

Circa 1880-A horn and ivory handle with a few bug bites, ivory belt buckle collar with damage to its lower side, two sided 13" blade, split bamboo shaft and a metal ferrule-H. 3 ½" x 3 ½", O.L. 35"
\$400-\$600



59. Ivory Dress

Circa 1890-A carved ivory log and animal with two color glass eyes, hallmarked ornate silver collar, exotic wood shaft and a bone ferrule-H. 4" x 1 1/4", O.L. 35"
\$300-\$500



59.

60. Stag Dress Cane

A pair of carved dogs with two color glass eyes, ornate gold filled collar, ebony shaft and a horn ferrule-H. 5" x 2 1/2", O.L. 34 1/2"
\$400-\$600



60.

61. French Porcelain Dress Cane

Circa 1870-A painted pommel handle with gold and flower decoration, large malacca shaft, and a horn ferrule-H. 1 1/2" x 1 3/4", O.L. 37 1/2"
\$300-\$400



61.



62.



62. Spectacular English Cane

Mid 19th Century-This cane features a primate's skull as the handle, a shaft made of the vertebrae of a reptile's spine with ivory and metal joining segments. This cane was overlooked for decades in a glass cabinet located at a small private college in Scotland. This highly collectable and one of a kind cane is contemporary to Charles Darwin and his assumptions of natural selection. The handle is 4 1/4" inches wide and is spring fastened. It also has a moving lower jaw and an overall length 34 3/4".

\$7,000-\$10,000

BRASS
ION CA
IVORY
ARTICULABLE
COLLECTIBLE
FE
ADITION
UNIQUE
SHAFT
CARVED
FOLK
AR
WHIMSY
NATIVE
AMERICAN
MODERN
EXA
HANDL
AL
ORNATE
ORIGINAL
CANE
SH
FINE
JAPANESE
BRASS
COLLAR
IVORY
WOODEN
HANDLE
KIMBALL

63. American Nautical Cane

Circa 1880-A carved large ivory Turk's head knot, inlaid abalone atop, twisted ebony shaft and a metal ferrule-H. 2" x 2 ½", O.L. 33 ¾"
\$1,000-\$1,200

63.



64. Important Nautical Cane

Mid 19th Century-A stylized carved whale's tooth handle which is attached to a Dasyatis Stephen stingray tail. This cane was probably put together by a sailor artist spending long days on his voyage. The tooth has delicately wings and tail feathers and baleen inset eyes.-H. 6 ½" x 2 ¼", O.L. 35"
\$4,000-\$6,000

64.





65.



65. Ivory Dress Cane

Circa 1875-A carved ivory dog with two color glass eyes, protruding sharp teeth, small ivory collar, ebony shaft and a metal ferrule-H. 3" x 2 3/4", O.L. 32 1/2"
\$600-\$1,000

66. Memento Mori Ivory Cane

Dated 1861-A massive ivory handle which is probably Russian, massive malacca shaft, silver collar with Russian hallmarks and a 5" spike ferrule. The handle is carved with many skulls throughout, skeletons and lizards.-H. 5" x 1 3/4", O.L. 38"
\$3,000-\$4,000



66.



67. Nephrite European

Dress Cane

Early 20th Century-A fine spinach handle with onyx end caps, Art Nouveau collar, ebony shaft and a bronze ferrule-H. 4 ½" x 2 ¾", O.L. 37 ½"

\$1,200-\$1,800

68. Carved European Dog

Late 19th Century-A finely carved probably French, dog with two color glass eyes, coromandel shaft and a horn ferrule-H. 5 ½" x 2", O.L. 37 ¼"

\$500-\$700

69. Cloisonné Russian

Dress Cane

Early 20th Century-A finely crafted enamel handle, sterling collar, ebony shaft and a horn ferrule-H. 3" x 1 ¼", O.L. 37"

\$1,000-\$1,200

69.

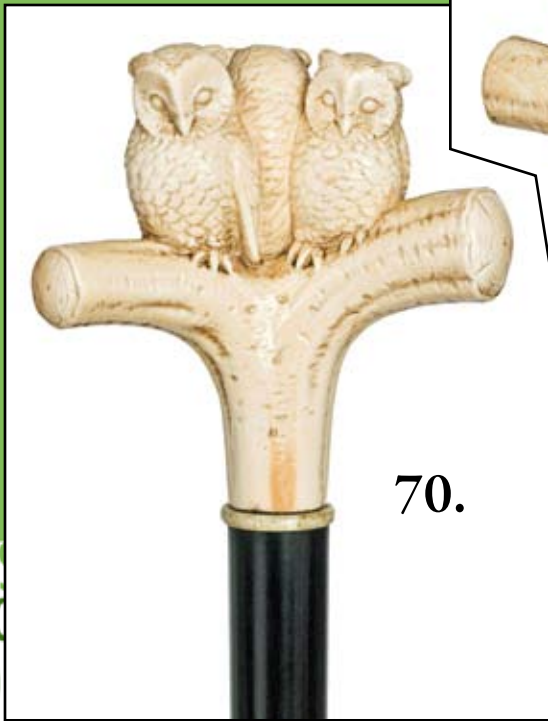


67.



68.





70.



70. Ivory Owl Dress Cane
 Late 19th Century-A carved ivory handle with is probably French in pristine condition, ring collar, ebony shaft and a horn ferrule-H. 4" x 4", O.L. 39"
 \$1,400-\$1,800

71. English Dog Cane
 Late 19th Century-A well carved and painted handle with two color glass eyes, leather collar, scarred and etched fruitwood shaft, and a brass ferrule-H. 3 1/2" x 2 1/2", O.L. 36 3/4"
 \$300-\$500

72. Ivory Dress Cane
 Late 19th Century-Carved ivory knob with applied silver badge, ebony shaft and a long ivory ferrule-H. 1 1/2" x 2", O.L. 35 1/4"
 \$400-\$600

73. Ivory Cat Cane
 Late 19th Century-A finely carved ivory cat with two color glass eyes, leather collar, stained malacca shaft and a 2" horn ferrule-H. 3 1/2" x 2", O.L. 36 1/2"
 \$1,500-\$2,000



73.



71.



72.

74. Ivory Crocodile Cane

Late 19th Century-Ferocious ivory handle, stepped malacca shaft and a metal ferrule-H. 3" x 3", O.L. 34 3/4"
\$900-\$1,200

75. Ivory Diva Cane

Circa 1890-Carved ivory handle which is done in great detail, ivory collar, malacca shaft and a 2" ivory ferrule-H. 4 1/2" x 3 1/2", O.L. 34 1/2"
\$700-\$1,200

76. Tortoiseshell Dress Cane

Late 19th Century-A two piece tortoise handle, two silver collars, ebony shaft and a 3" horn ferrule-H. 11 1/2" x 1 1/2", O.L. 38 3/4"
\$500-\$800

77. Carved Snake and Bone Dress

Late 19th Century-A classic German bone cane, silver shield inlaid at the end cap, silver collar, ebony shaft and a horn ferrule-H. 5" x 3 3/4", O.L. 37 1/4"
\$500-\$1,000



KLING
FERRUL
JAN
AR
N
OI



HEAVY B
PRESENTAT
PHANT
OKED TR
TION V
USUA
YLE





78.

78. Ivory Dog Cane

Dated 1881-A massive carved handle with London hallmarks, full bark malacca shaft, silver collar and a metal ferrule-H. 4 ½" x 2", O.L. 36"
\$1,500-\$2,500

79. Majestic Ivory Dress Cane

Circa 1885-Massive ivory handle with 6 lions, massive ebony shaft and a metal ferrule-H. 3 ¼" x 2", O.L. 35 ¼"
\$2,000-\$3,000

80. Siam Horn Cane

Circa 1890-A carved horn dog with two color glass eyes, hallmarked gilt collar with the maker's mark J.H., ash wood shaft and a horn ferrule-H. 2 ¾" x 1 ½", O.L. 38"
\$400-\$700



79.



80.

81. Ivory Cat Cane

Late 19th Century-A very finely carved ivory handle which was probably inspired by the drawings of Louis Wain, hallmarked gold collar, exotic wood shaft and a horn ferrule-H. 4" x 1 1/2", O.L. 37 1/2"
\$1,500-\$2,500

82. French Glass Dress Cane

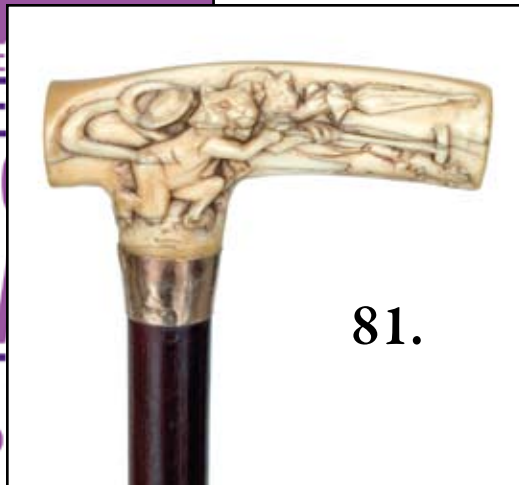
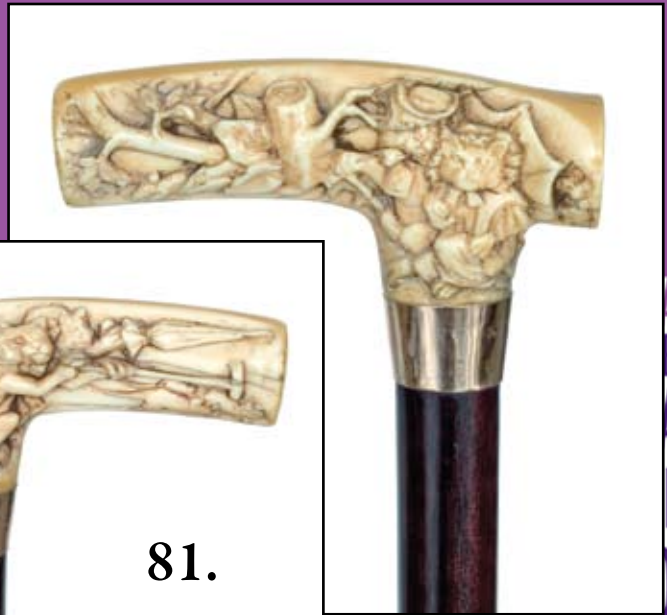
Early 20th Century-Ribbon glass handle, gilt gold collar, rosewood shaft and a horn ferrule-H. 1 1/2" x 2", O.L. 38 1/2"
\$400-\$600

83. Sterling Elephant Cane

Circa 1920-A German signed sterling handle with two color glass eyes, ebony shaft and a horn ferrule-H. 4 3/4" x 4 1/2", O.L. 36 3/4"
\$400-\$600

84. Ivory Cat Cane

Circa 1900-A finely carved ivory handle, silver collar with a series of Birmingham hallmarks and maker's stamps, malacca shaft and a bronze ferrule-H. 5 1/2" x 2 1/4", O.L. 35 3/4"
\$2,000-\$3,000



81.

82.



83.



84.





85.



85. Ivory Skull Cane

Circa 1865-A carved ivory handle with skull and cross bone, malacca shaft and a long iron spike ferrule-H. 4 ¼" x 3 ¼", O.L. 36 ½"
\$500-\$600

86. Massive Ivory Dress Cane

Circa 1870-A massive carved Bedouin, full bark malacca shaft, large silver collar and no ferrule-H. 3 ½" x 2 ½", O.L. 35"
\$2,000-\$3,000

87. Ivory Skull Cane

Circa 1890-Carved ivory Memento Mori handle, ironwood shaft with a red segment and a metal ferrule-H. 2 ½" x 2", O.L. 35 ¼"
\$500-\$600

87.



86.



88. German Ivory Dress Cane

Circa 1860-A carved ivory handle with hounds chasing a stag, pepper bamboo shaft, metal collar and a metal ferrule-O.L. 37 ¾"

\$1,300-\$1,800

89. Ivory Lion Cane

Early 20th Century-Carved ivory handle, ornate silver collar which is probably French, ebony shaft and a metal ferrule-H. 4 ½" x 3 ½", O.L. 35 ¼"

\$700-\$1,000

90. Ivory Sword Cane

Late 19th Century-A finely carved ivory handle with glass eyes, metal and silver collars, 12 ½" locking, two-sided blade, rich malacca shaft and a brass ferrule-H. 2 ¾" x 1 ½", O.L. 35"

\$1,000-\$1,500

91. Carnelian Dress Cane

Early 20th Century-A classic hard stone knob, silver collar and cast lion adornment, exotic wood shaft and a brass ferrule-H. 2" x 1", O.L. 37 ½"

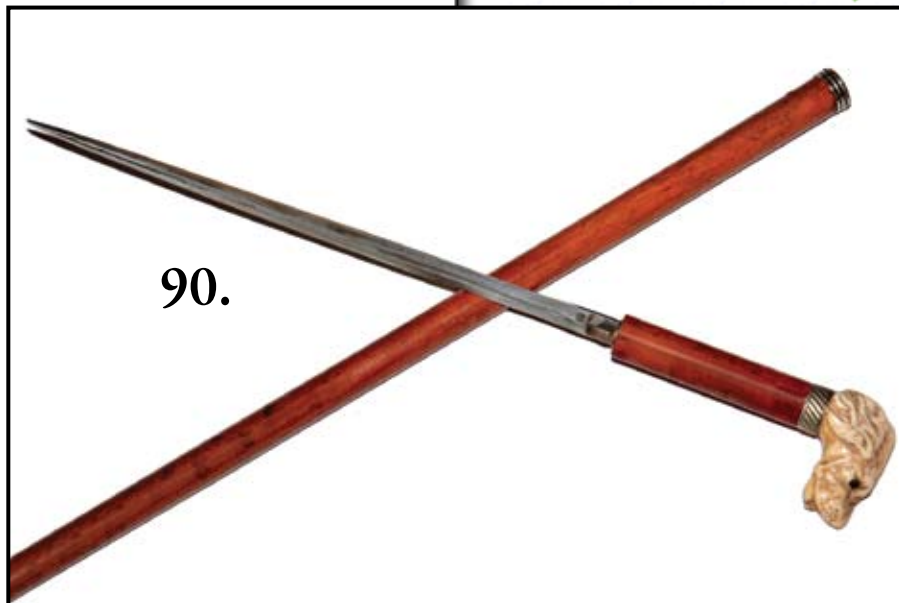
\$600-\$1,200



89.



88.



90.



91.

92.



92. Japanese Carved Ivory Cane

Meiji Period-A massive carved handle with a primate stealing eggs from the nest of two snakes, massive malacca shaft, small ivory collar and a bi-metal ferrule-H. 4" x 1 3/4", O.L. 37"
\$2,000-\$2,500

93. Polish Dress Cane

Dated 1922-An engraved sterling silver handle, ebony shaft and a bi-metal ferrule-H. 4 1/2" x 3 1/2", O.L. 35"
\$300-\$500

94. Ivory Gypsy Dress Cane

Circa 1850-Carved ivory handle, small ivory collar, stepped partridge shaft and a metal ferrule, handle has had early repair which attaches the top torso to the bottom-H. 4 3/4" x 1", O.L. 37"
\$400-\$600

94.



93.

95. Rhino Dress Cane

Circa 1880-A fine French Colonial Dress Cane in it's original presentation box, ornate gold collar and a gold gilt ferrule, fine condition except for a few minor "chigger bites" on the underside of the handle and a few of the turnings-H. 5" x 3", O.L. 32 ¾"

\$2,500-\$3,500

96. Ivory Dog Cane

Circa 1880-A carved ivory handle, ivory collar, malacca shaft and a horn ferrule-H. 3 ¼" x 2 ½", O.L. 35 ½"

\$600-\$1,200

97. Russian Orthodox Ivory Cane

Circa 1865-An ivory depiction of St. Paul, malacca shaft and a long stag ferrule-H. 4" x 4", O.L. 36 ½"

\$800-\$1,200



95.



97.



96.



98.

98. Nautical Ivory Cane

Circa 1865-The carved nautical fist and snake, tropical wood shaft, horn and ivory washer spacers and a brass ferrule-H. 3 ¾" x 1 ¼", O.L. 33 ½"
\$400-\$800

99. French Ivory Nude

Circa 1890-An Art Nouveau, full carved ivory nude handle, leather collar, malacca shaft and an iron ferrule-H. 5" x 3", O.L. 35 ¼"
\$3,000-\$5,000



99.

100. Tula Russian Dress Cane

Circa 1880-An elegant silver handle, ebony shaft, unreadable hallmarks and a horn ferrule-H. 4 ½" x 2 ½", O.L. 37"
\$500-\$1,000



100.



101. English Bone Dress Cane

Circa 1850-A carved bone handle, white metal collar with two whippets, malacca shaft and a bronze ferrule-H. 3 ½" x 1", O.L. 33 ½"
\$400-\$800

102. Owl Dress Cane

Circa 1900-A massive carved owl with two color glass eyes, hallmarked silver overlay, leather collar, dark rosewood shaft and a horn ferrule-H. 7" x 2 ¼", O.L. 40 ½"
\$1,000-\$1,500

103. Bohemian Dress Cane

Circa 1870-A silver gilt enameled handle with various cabochons and pearls, hexagonal bamboo shaft and a metal ferrule-H. 4 ½" x 1 ¼", O.L. 39 ¼"
\$1,000-\$1,500

104. Ivory Cat Cane

Circa 1885-An unusually carved large cat, peering a tortoise, metal collar with a Greek inscription, malacca shaft and a 4 ¾" stag horn ferrule-H. 3" x 2 ¼", O.L. 36 ½"
\$800-\$1,500



104.



102.

101.



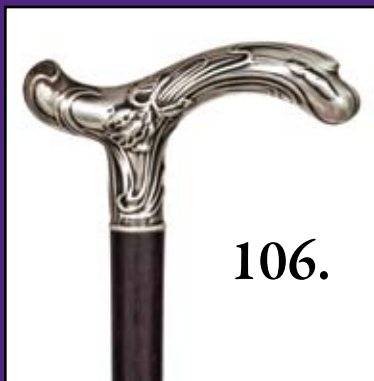
103.



107.



108.



106.

105.



109.



105. Silver Asian Dress Cane

Circa 1880-A large silver handle, ebony shaft and a metal ferrule-H. 8" x 1", O.L. 36"

\$400-\$600

106. Sterling Dress Cane

Circa 1890-German Art Nouveau handle, rosewood shaft and a horn ferrule-H. 4 1/2" x 2 1/2", O.L. 38"

\$400-\$600

107. French Jockey's Cane

Late 19th Century-A carved boxwood handle done in great detail, stepped partridge shaft, silver collar with unreadable hallmarks and a horn ferrule-H. 4" x 2 3/4", O.L. 35"

\$800-\$1,200

108. Hard Stone Dress Cane

Circa 1920-Aventurine quartz handle, faceted rock crystal collars, ebony shaft and a metal ferrule-H. 3" x 7/8", O.L. 39"

\$500-\$800

109. Viennese Mascot Cane

Late 19th Century-A gun metal handle decorated with 18 karat gold charms, ebonized fruitwood shaft, gold collar and a metal ferrule-H. 1 1/2" x 2", O.L. 38"

\$400-\$800

110. Walrus Ivory Dress

Circa 1860-A carved walrus ivory hoof foot, engraved silver collar, rosewood shaft and a horn ferrule-H. 4 1/4" x 3 1/4", O.L. 36 3/4"
\$500-\$700

111. European Ivory Cane

Circa 1875-A figural ivory knob, embossed silver collar, ebony shaft and a horn ferrule-H. 2 1/2" x 2 1/4", O.L. 39 1/4"
\$600-\$800

112. Far-Eastern Silver

Dress Cane

Circa 1885-Finely engraved handle, stacked washer shaft and a bi-metal ferrule-H. 3 1/4" x 3", O.L. 35 1/2"
\$400-\$600

113. Walrus Ivory Dress Cane

Circa 1860-Pistol grip handle, ebony shaft and a stag horn ferrule-H. 7 1/4" x 2 3/4", O.L. 39"
\$400-\$600

114. Massive Bamboo Cane

Circa 1945-A not so classic massive bamboo one piece dress cane, woven yellow gold wire collar and a horn ferrule, very stout and ready to walk with-H. 6 1/2" x 5 1/4", O.L. 35 1/2"
\$200-\$400



114.



111.



110.



112.



113.





116.



115.



117.

115. Massive Cinnabar Cane

Mid 20th Century-A stout lacquered handle, partly gilt metal collar, pepper bamboo shaft and a horn ferrule-H. 7 1/4" x 3", O.L. 37"
\$400-\$600

116. African American Ivory Automation

Late 19th Century-A precisely carved handle with a push button operation. When you push the ivory button on the back of the head, both eyes move and the tongue sprints forward, gold plated collar, ebonized shaft and an ivory ferrule.-H. 2 1/2" x 3", O.L. 35 3/4"
\$2,000-\$3,000

117. Damascene Dress Cane

Late 19th Century-A very well worked handle with many dragons and flowers, original ebony shaft and a metal ferrule-H. 4" x 4", O.L. 36 5/8"
\$500-\$1,000

118. Damascene Knob Dress Cane

Circa 1890-Ornate worked handle with birds, cranes and orchids, ebonized shaft and a small metal ferrule-H. 1 1/4" x 1 1/2", O.L. 34 3/4"
\$500-\$700

118.



119. Whalebone

Standard Cane

Mid 19th Century-An unusual offering in a flat but thick measuring gage, it has scrimshawed lines for the purpose of detail measuring-

O.L. 35 ½"

\$400-\$1,000

120. Ivory Dress Cane

Early 20th Century-Carved ivory dog, metal collar, ebony shaft and a bi-metal ferrule-H. 4" x 1 ¾", O.L. 37"

\$500-\$700

121. Rhino Crook Dress Cane

Circa 1910-Rhino crutch handle, malacca shaft and a horn ferrule-H. 5" x 3 ½", O.L. 33"

\$400-\$600

122. Ivory Meerkat Dress Cane

Circa 1890-A carved ivory handle with two color glass eyes, sterling collar, stepped hardwood shaft and a bi-metal ferrule-H. 4" x 1 ¾", O.L. 34 ¾"

\$600-\$900



119.



121.



120.



122.



123.

123. Ivory Pique Dress Cane
 Circa 1900-Swirled ivory handle with pique work, hallmarked British collar, ebony shaft and a brass ferrule-H. 4 ½" x 1 ¾", O.L. 33 ½"
 \$500-\$600



125.

124. Horn Dress Cane
 Late 19th Century-A carved horn handle with two color glass eyes, British hallmarked belt buckle collar, ebony shaft and a horn ferrule-H. 5 ¾" x 1 ¼", O.L. 36 ½"
 \$600-\$900

125. Silver and Stag Dress Cane
 Late 19th Century-A mostly covered stag handle, signed sterling ornate collar, natural twig shaft and a metal ferrule-H. 5 ½" x 1 ¾", O.L. 35"
 \$300-\$500

126. Niello Silver Dress Cane
 Circa 1890-A prime example, hallmarked silver handle, exotic faux bamboo shaft and a horn ferrule-H. 4 ¾" x 1 ½", O.L. 36"
 \$400-\$600



126.



124.



127. Horn Sword Cane

Late 19th Century-One piece horn handle, ornate silver collar, 13" blade with a locking mechanism and blood grooves, bamboo shaft and a metal ferrule-H. 3 ¾" x 4 ¼", O.L. 35 ½"
\$800-\$1,200

128. Marquetry Dress Cane

Mid 20th Century-Nice inlaid handle, British silver collar, hardwood shaft and a brass ferrule-H. 5" x 2 ½", O.L. 37 ½"
\$150-\$250

129. Adam and Eve Ivory Cane

Circa 1880-A precisely carved ivory handle which probably represents the Garden of Eden, ebony shaft, inlaid ebony disc atop and an ivory ferrule-H. 4 ½" x 1 3/8", O.L. 38"
\$2,500-\$3,500



128.



129.



130.

130. Ivory Piquet

Late 18th Century-A nice original example of piquet work, coin silver collar, massive malacca shaft and a 3 1/2" metal ferrule-H. 1 3/4" x 3 1/4", O.L. 33 1/2"
\$4,000-\$5,000

131. Silver and Crystal Dress Cane

Circa 1890-Fine sterling silver over rock crystal with expert engraving, rich snake wood shaft and a bi-metal ferrule-H. 2 3/4" x 1 1/8", O.L. 36"
\$1,000-\$1,200

131.



132. Heraldic Ivory Dress

Circa 1870-A carved ivory handle with various fruits and flowers, signed silver collar, exotic wood shaft and a metal ferrule-H. 3 7/8" x 1 1/2", O.L. 38"
\$500-\$600

133. Sterling Massive Dress Cane

2006-A custom massive silver handle from the well known work shop of Charles Daugherty, massive ornate cast handle, large stepped bamboo shaft and a bi-metal ferrule-H. 4" x 2", O.L. 37"
\$500-\$700

134. Skull and Bone Silver Dress

First half of 20th Century-A signed sterling handle which contains a rattle, exotic wood shaft and an old brass ferrule-H. 3 1/2" x 2 1/2", O.L. 36"
\$700-\$1,200



134.



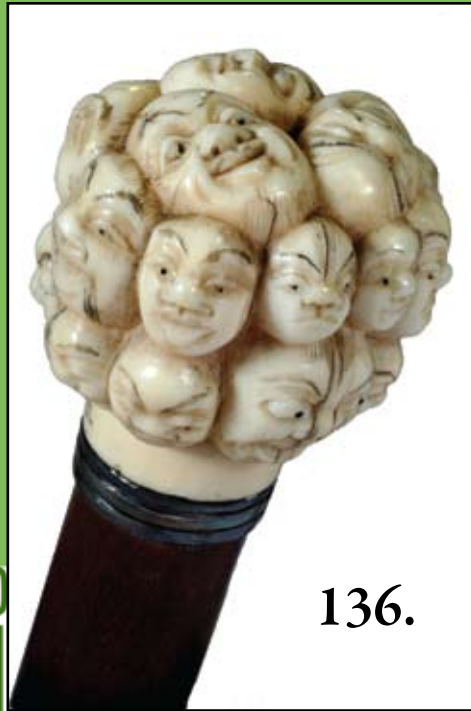
132.



133.



135.



136.

135. 14 Karat Gold

Dress Cane

Circa 1925-A signed gold handle, ebony shaft and a horn ferrule-H. 2" x 1", O.L. 35 1/2"
\$500-\$700

136. 1000 Faces Ivory Cane

Circa 1890-A signed ivory handle, ribbed silver collar, mahogany shaft and a horn ferrule-H. 1 1/2" x 1 3/4", O.L. 36"
\$500-\$700

137. Whale Ivory Knob Cane

Late 19th Century-Original tooth handle, exotic wood shaft and a 3 1/2" brass ferrule-H. 1 1/4" x 1 1/2", O.L. 35 3/4"
\$300-\$400

138. Anglo Indian Ivory Cane

Circa 1900-A carved handle with inlaid eyes, small horn collar, completely inlaid exotic wood shaft and a bi-metal ferrule-H. 1 1/2" x 1 3/8", O.L. 37 1/2"
\$500-\$600

139. Whale Ivory Cane

Late 19th Century-A whale ivory handle which has a military eagle inlaid in its top, coin silver collar, exotic wood shaft and a brass ferrule-H. 1 1/2" x 1 3/4", O.L. 34 1/2"
\$300-\$400



137.



138.



139.

140. Tortoise Shell and Silver Dress Cane

Circa 1885-Signed sterling bright cut handle, full tortoise shaft and a bi-metal ferrule-H. 4" x 3", O.L. 34"
\$1,200-\$1,500



140.



141. Ivory Skull and Snake

20th Century-An expertly carved ivory handle with multiple skulls, signed "L. B.", rich snake wood shaft and an ivory ferrule-H. 4" x 1 5/8", O.L. 36"
\$1,200-\$1,500



141.

142. Ivory Horse Cane

Circa 1885-Ivory horse with two color glass eyes, ornate sterling collar, honey malacca shaft and a metal ferrule-H. 4" x 1 1/2", O.L. 35"
\$1,000-\$1,200



142.

143. Memento Mori Cane

Late 19th Century-Well carved walrus tusk, signed sterling collar, rich malacca shaft and a horn ferrule-H. 4" x 1 3/4", O.L. 37"
\$1,200-\$1,500



143.

KIMBALL M. STERLING, INC.

We are now accepting
one cane or an entire collection
for our upcoming auctions.

Call 423.773.4073
or email kimballsterling@earthlink.net

RASS HANDLE HARDWOOD BRASS AND IRON FERRULE CIRCA 1800 MODERN SHAFT
ON CANE
IVORY
ART COLLECTIBLE
EARLY 18TH CENTURY HANDLE
FERRULE HORN COLLAR
TRADITION UNIQUE SHAFT CARVED FOLK ART
ART NOUV
WHIMSY NATIVE AMERICAN MODERN EXAMPLE
HANDLE CIRCA 1900 LATE
ALORNATE ORIGINAL CANE SHAFT SPRING CANE COLL
FINE JAPANESE BRASS COLLAR
DRESS WOODEN HANDLE KIMBALL ONE PIECE DRESS CANE
LATE VICTORIAN KIM

www.auctionauction.com

Kimball M. Sterling, Inc. (TFL-1915)
125 West Market Street
Johnson City, Tennessee 37601
kimballsterling @ earthlink.net
423.928.1471

Member National Auctioneers Association
© Copyright 2010 Kimball M. Sterling, Inc.



D IRON FERRULE IVORY BRASS COLLAR CROOKED EDGE HANDLE STERLING LATE 19TH CENTURY HEAVY
BLE ONE PIECE HORN COLLAR FERRULE AMERICAN ELEPHANT EARLY 18TH CENTURY PRESENT
ERRULE ART NOUVEAU ANTIQUE CROOKED
MODERN HANDLE SPRING COLLECTION EARLY 20TH CENTURY AUCTION
L BRASS CANE DRESS CANE ONE PIECE UNIQUE DRESS UNUSU
ABALL CIRCA 1800 CARVED SIGNED STYLE
COLLECTION LATE VICTORIAN TWIN CANE

Photography by *James Price*

Catalog Design by *KT Design, Inc.*
www.kristaft.com

www.auctionauction.com