

KIMBALL & VICTORIA STERLING PRESENT A

SUMMER CANE AUCTION



SATURDAY, AUGUST 7TH

www.auctionauction.com

Kimball & Victoria Sterling
Present A

Summer Cane Auction

Saturday,
August 7th, 2010

11:00 a.m. E.S.T.

Preview

Friday, August 6th

12:00 p.m. - 5:00 p.m. E.S.T.

Saturday, August 7th

9:00 A.M. E.S.T.

or by appointment anytime before the auction

Live on the internet at
LIVEAUCTIONEERS.COM

Kimball M. Sterling Auction Gallery
125 West Market Street
Johnson City, Tennessee 37601
kimballsterling @ earthlink.net
423.928.1471

Two Time Winner of Best of Show from the
National Auctioneers Association

www.auctionauction.com

SUMMER CANE AUCTION



TERMS & CONDITIONS

1. Cash, check, MasterCard, or Visa. A 15% buyers' premium will be added to the hammer price as part of the sale price for in-house, phone, and absentee bidders. We reserved the right to hold purchases until the buyers checks clears if buyer is not known by us. Bank letter of credit is acceptable. A 20% buyers fee will be charged to internet bidders.

2. Mail or phone bids are accepted; the firm may require a deposit.

3. Kimball M. Sterling, Inc. has endeavored to catalog and describe the property correctly. All property is sold as is and neither the auction company nor the consignor will be responsible for descriptions, genuineness, provenance or condition of the property. No statement in the catalog made orally at the sale or otherwise shall be deemed to be a warranty, representation, or an assumption of liability.

4. In the event of any dispute between bidders, the auctioneer shall have total discretion to determine the successful bidder, in which his determination shall be final or to re-offer and resale the article in dispute. Title of the item or items purchased by the bidder will pass at the fall of the gavel and declaration of bidder. This is not an approval auction. All measurements are approximate.

5. Principal auctioneer: Kimball M. Sterling #2467.
B. Elizabeth Sterling, auctioneer # 5757. Firm Kimball M Sterling Inc. TFL-1915

6. Bidders may bid live on the Internet by visiting <http://www.auctionauction.com> You may also view the auction at this site and bid by phone.

7. Communications:
Telephone 423-928-1471.
Fax 423-928-2816.
Cellular 423-773-4073, 423-773-4072.
Email kimballsterling@earthlink.net

8. Worldwide shipping available. International sales which are protected by C.I.T.E.S. permits can also be arranged. Estimated bidders cost per cane is \$255.00 for permits and inspections plus the shipping cost. A permit may also be required by your country. Buyers pay for shipping, packing and insurance from United states Postal Service.

9. Kimball M. Sterling, Inc. will not be held responsible for bids received on the day of the auction, unexecuted absentee bids, phone bidders not contacted or slow Internet bids. Although we do attempt to get all bids executed problems do occur. There will be no recourse from the bidder. We will not be responsible for items left on our location for over 30 days.

10. Sale will be conducted at 125 West Market Street, Johnson City, Tennessee. 37604. Announcements day of the sale take precedence over pre-sale advertising. Any litigation that pertains to this auction will be conducted in the county of Washington in Tennessee and is agreed upon by registering for this auction.

11. Airport is the Tri-Cities Airport, which is approximately 20 miles from the gallery. Internet catalog and live bidding available at www.auctionauction.com Best Western Hotel: 423-282-2126. A very fine hotel which offers Sterling Auction a discount rate is the Carnegie Hotel 1216 W State of Franklin Rd, (423) 979-6400.

12. Please call for condition report on sale lots or email us. We do send out multiple photos by email of any lot in the auction. By registering for this auction you accept the terms and give Kimball M. Sterling auctions the right to charge your credit card on file for purchases and shipping, which you have entered on your registration.

13. Parking service is free.





1.



1. Damascus and Tortoise Dress Cane

Circa 1900-A Damascus crook handle, full tortoise shaft, and an ornate bi-metal ferrule-H. 4" x 4 1/2", O.L. 36"

\$1,500-\$2,000

2. Sterling Tiger Lady Cane

A contemporary sterling handle from the workshop of Charles Daugherty, massive rich snake wood shaft and an ivory ferrule-H. 1 3/4" x 3 1/4", O.L. 36"

\$500-\$700



2.

3. Japanese Carved Stag

Circa 1890-A carved and etched smiling snake with a two color glass eyes, brass collar, malacca shaft and a bi-metal ferrule-H. 4 1/4" x 1 1/4", O.L. 36"

\$500-\$600



3.



4. Sterling Over Stag Dress Cane

Circa 1880-A large silver handle inscribed "Granite, Colo.", large silver collar, natural vine shaft and a bi-metal ferrule-H. 2 1/2" x 6 1/2", O.L. 34 1/2"

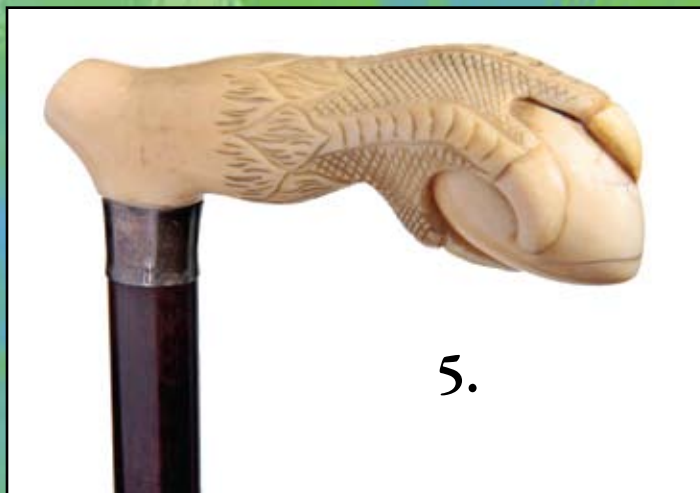
\$500-\$600



4.

5. Ivory Dress Cane

Early 20th Century-A finely carved talon holding an egg, signed sterling collar, rich snakewood shaft and a bi-metal ferrule-H. 5" x 2", O.L. 36"
\$700-\$900



5.

6. Carved Dog Cane

20th Century-Nicely carved dog with two color glass eyes, silver collar, exotic wood shaft and a bi-metal ferrule-H. 2" x 3", O.L. 35"
\$300-\$500



6.

7. Mineral Overlaid Dress

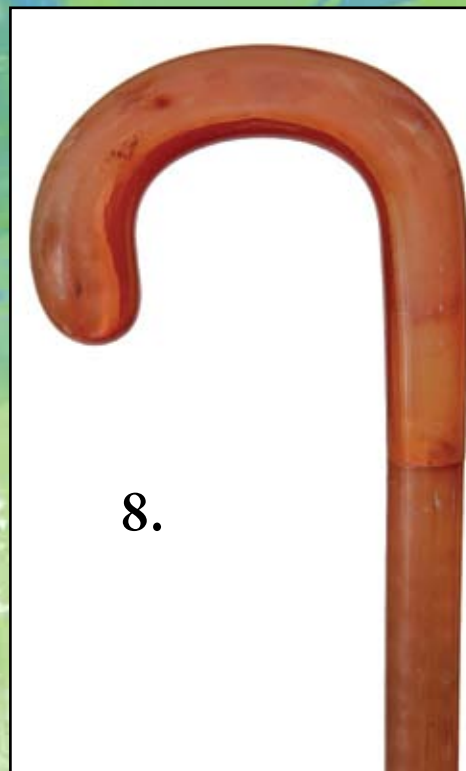
Early 20th Century-A very attractive mineral handle which is unknown to us, hand engraved floral overlay, small silver collar, ebony shaft and a horn ferrule-H. 1 1/4" x 1 1/4", O.L. 37"
\$800-\$1,000

8. Shell Dress Cane

Circa 1900-A natural substance cane which is probably compressed blond tortoise and a small baleen spacer above the shell ferrule-H. 4 1/4" x 4 1/4", O.L. 35"
\$700-\$900



7.



8.





9.

9. Ivory Snake and Mouse Cane

Early 20th Century-A large carved entwined ivory snake with two color glass eyes and silver fangs, ornate signed sterling collar, massive snakewood shaft and an ivory ferrule-H. 2 ½" x 2 ¼", O.L. 36 ½"
\$800-\$1,200

10. Ivory Game Cane

Early 20th Century-Carved ivory handle with a fluted top, three ivory die encased in glass, ornate florentine gold filled collar, ebony shaft and a bi-metal ferrule-H. 1" x 1 ½", O.L. 36"
\$700-\$900



10.

11. Silver Dress Cane

Art Nouveau-Silver handle inlaid with ebony, hexagonal ebony shaft and a horn ferrule-H. 3 ½" x 4 ½", O.L. 35 ¼"
\$300-\$500

12. Ivory Den of Bears Cane

Circa 1890-Carved ivory grouping of four bears, mother, father, baby and cubs, signed Oriental figures in red, hammered signed sterling collar, malacca shaft and a horn ferrule-H. 4 ¼" x 1 ¾", O.L. 34 ½"
\$1,500-\$2,000



11.



12.

13. Folk Art Nautical Cane

Late 19th Century-A fully carved Turk's knot handle, carved rope collar, completely carved spiral shaft and a two piece ferrule-O.L. 34 1/2"
\$500-\$600

14. Carved Sword Cane

Late 19th Century-A very ornate carved bone handle, four sided, blued and gilded 26" near mint blade, malacca shaft and a bi-metal ferrule-H. 5" x 3 1/2", O.L. 36"
\$800-\$1,200

15. Ivory Carved Dog Cane

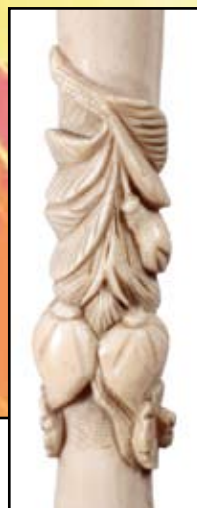
Circa 1900-A carved ivory handle with three canines, woven leather collar, dark malacca shaft and a metal ferrule-H. 2 1/4" x 2 3/4", O.L. 35"
\$600-\$800

16. An Unused Copy of "Canes in the United States" by Catherine Dike
\$200-\$300

17. Stag and Ivory Dress Cane

Circa 1930-A carved ivory dog or wolf which is attached to an antler, metal collar, twig spur shaft and a bi-metal ferrule-H. 3 1/4" x 8", O.L. 35 3/4"
\$500-\$600

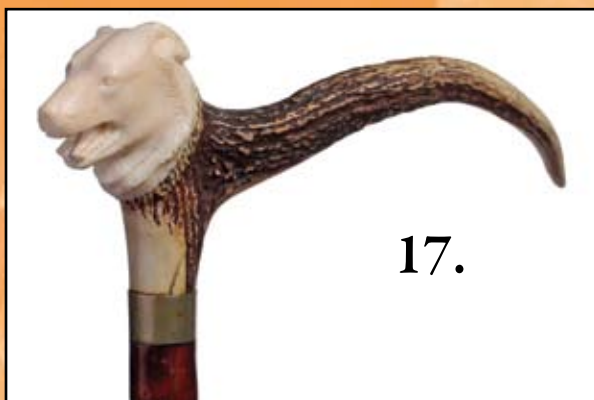
16.



14.



15.



17.

13.





19.



18.



20.

18. Tortoise Dress Cane

Circa 1920-Well formed tortoise shell handle, silver collar, snakewood shaft and a bi-metal ferrule-H. 2 ¾" x 4", O.L. 35 ¼"
\$500-\$700

19. Tortoise Dress Cane

Early 20th Century-A very well patinated tortoise handle, 14 kt hammered and inscribed collar, ebony shaft and a horn ferrule-H. 11 ½" x 3 ½", O.L. 34 ½"
\$600-\$900

20. Carved Middle Eastern Man Cane

Circa 1880-A finely carved man with an ebony wood face, silver eyelets, ebony shaft and a bi-metal ferrule-H. 3 ¼" x 2 ½", O.L. 36 ¼"
\$500-\$700

21. Tortoise Sunday Stick

Early 20th Century-A well formed tortoise club, British hallmarks and maker's mark, partridge wood shaft and a bi-metal ferrule-H. 2 ½" x 3", O.L. 36 ¼"
\$700-\$1,000



21.

22. Horn Dress Cane

Circa 1880-A well aged horn handle which is probably rhino, signed but unreadable ornate silver collar, exotic wood shaft and a bi-metal ferrule-H. 1 ½" x 3 ½", O.L. 34"

\$300-\$400

23. Ivory Dress Cane

Circa 1890-A carved Nouveau handle, an ornate signed sterling collar, exotic wood shaft and a bi-metal ferrule-H. 1 ¼" x 4 1/8", O.L. 35 ¼"

\$300-\$400

24. Ivory Dress Cane

Circa 1890-A long ivory handle, ornate ivory collar, malacca shaft and a 2 ½" ivory ferrule-H. 7 ¾" x 3 ½", O.L. 34"

\$500-\$600

25. Gold Filled Dress

Circa 1880-An ornate handle which has a large buck atop, ebony shaft and a horn ferrule-H. 2 ¾" x 1 ½", O.L. 37"

\$300-\$500

26. Silver Boar Dress Cane

Circa 1935-An ornate silver end cap in the shape of a wild boar, engraved silver collar, grained wood shaft and a split metal ferrule-H. 5 ¼" x 5", O.L. 35 ¾"

\$300-\$400

27. Pearl Dress Cane

Circa 1880-Ornate triangular gold filled handle and collar, twelve piece pearl handle of which two have noticeable but not annoying fractures, triangle ebony shaft and a bi-metal ferrule-H. 7 ¾" x 1 ¼", O.L. 36"

\$400-\$600

24.



22.



23.



25.



26.

27.

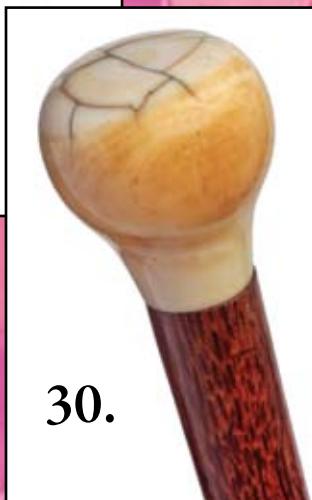




28.



29.



30.

28. French Porcelain

Dress Cane

Circa 1880-A wonderful porcelain handle done much in the style of Sevres, royal cobalt blue with heavy gold moriage work, hand painted French courting scene, gold metal collar, ebony shaft and a bi-metal ferrule-H. 6" x 1 3/4", O.L. 36"
\$900-\$1,200

29. Hull Ornate Dress Cane

Early 20th Century-An ornate gold presentation cane which is signed by the maker Hull, ebonized shaft and a bi-metal ferrule-H. 3 1/2" x 4 1/2", O.L. 36 1/4"
\$300-\$500

30. Whale Ivory Dress Cane

Circa 1875-A well aged whale ivory knob, live oak shaft with attached coin silver cartouche and an ivory ferrule-H. 1 3/4" x 1 1/2", O.L. 36"
\$300-\$500

31. Massive Silver Dress Cane

Mid 19th Century-Massive and ornate signed silver handle, 1 1/4" malacca shaft and a period 5" brass ferrule-H. 4 3/8" x 1 3/4", O.L. 37 3/4"
\$800-\$1,200

31.



32. Fancy Carved Ivory Horse Cane

Dated May 7th 1872-A large ivory handle with a prancing horse, carved initial cartouche, fancy gold filled presentation collar, deep brown malacca shaft and a horn ferrule-H. 4 ½" x 5 ½", O.L. 36 ¾"
\$1,500-\$2,000

32.



33. A Tiffany Dress Cane

Early 20th Century-The removable sterling handle is signed Tiffany and Co. Maker's Sterling M., very rich snakewood shaft, bi-metal ferrule and the handle has a few minor dings which can be seen in the photo-H. 3" x ¾", O.L. 35 ¾"
\$600-\$900

33.



34. Hematite Knob Dress Cane

Late 19th Century-A nice example of this mineral with a refresh collar, ebony shaft and a horn ferrule-H. 2" x 2", O.L. 35 ½"
\$300-\$500

35.

35. Japanese Export Ivory Cane
Circa 1890-Carved ivory handle with multiple masks, tortoise shell collar, rosewood shaft and a horn ferrule-H. 3 ½" x 2", O.L. 35"
\$500-\$1,000

34.





37.



36.



39.

36. Ivory Flick Stick

Circa 1860-An original ivory flick stick with a working 5 3/4" retractable pike and cover, ribbed coin silver collar, hexagonal cherry shaft and a brass ferrule-H. 1 1/2" x 1 1/2", O.L. 34 1/2" \$800-\$1,200

37. Continental Jewelry Cane

Late 19th Century-A silver and enamel knob handle with a nephrite cabochon atop, both fine enamel and silver work are seen throughout the entire handle, silver collar with various hallmarks with a maker's mark of G.A.S. which probably represents George Adam Scheld, ebony shaft and a brass ferrule-H. 3" x 1 1/4", O.L. 36" \$800-\$1,200

38. Tiffany Sterling Dress Cane

Circa 1900-A removable sterling hammered handle which is signed Tiffany and Co. Maker's Sterling, ebony shaft and a bimetal ferrule-H. 1 1/2" x 1 1/4", O.L. 35 1/2" \$500-\$900

39. Hardstone Dress Cane

Late 19th Century-A hardstone Chaorit handle with purple, violet and pearl luster, refreshed ornate collar on an ebony shaft and a horn ferrule-H. 1 1/2" x 1 1/2", O.L. 38" \$400-\$700



38.

40. An Ivory Flick Stick

Circa 1860-An ivory knob flick stick with a 3 ½" pike, locking blade with brass cover, sugar maple shaft and a bi-metal ferrule-H. 2 ¼" x 1 ½", O.L. 37"
\$800-\$1,200

41. Rose Quartz and Crystal Dress Cane

Early 20th Century-A nearly transparent quartz handle with two faceted rock crystal collars, brown rosewood shaft and a brass ferrule-H. 3" x ¾", O.L. 37"
\$400-\$600

42. Carved Asian Ivory

Circa 1890-A carved ivory "Thousand Faces" style of cane, dark rich ebony shaft and a horn ferrule-H. 2" x 1 ½", O.L. 38"
\$500-\$800



40.



41.

42.





43. Telescope Sword Cane

Mid 19th Century-A very rare system stick which includes a swivel two draw spy glass with unreadable maker's marks, four sided 13" blade with locking mechanism, shark skin covered handle, malacca shaft and a metal ferrule-H. 6 ¾" x 1 ½", O.L. 36" \$2,500-\$3,500

43.



44. Nephrite Ball Dress Cane

Early 20th Century-A perfect spinach green sphere, gold metal collar, ebony shaft and a horn ferrule-H. 1 ¾" x 1 ¾", O.L. 38" \$400-\$700



44.

45. English Silver and Ivory Loop Cane

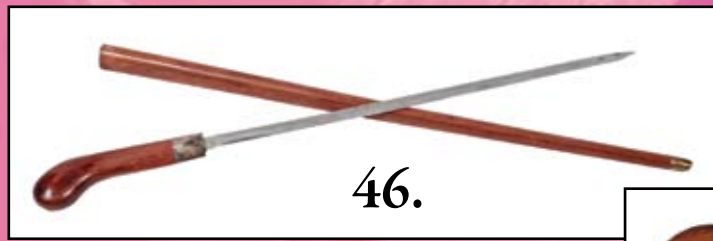
Circa 1880-An ornate silver hallmarked handle, belt buckle silver mid collar, hammered silver collar, faux twig spur ivory handle, rosewood shaft and an ivory ferrule-H. 6" x 1 ¾", O.L. 38" \$700-\$1,200



45.

46. Walnut Sword Cane

Circa 1880-A highly stylized walnut sword cane with an ornate 20.5" blade which is signed but unreadable, blade may be signed Toronto, large silver presentation collar, very sharp and dangerous blade which has the initials A.O.B.M., blade fits tight to shaft and a brass ferrule-H. 6 ½" x 2 ½", O.L. 35 ½"
\$600-\$900



47. Museum Quality Ivory Horse Cane

Circa 1880-A finely carved stallion done with great detail and artistry, ornate silver collar, malacca shaft and a metal ferrule-H. 4" x 3 ½", O.L. 36"
\$1,800-\$2,500



48. Continental Amethyst Dress Cane

Early 20th Century-An amethyst handle with two rock crystal faceted collars, rosewood shaft and a brass ferrule-H. 3" x 7/8", O.L. 38 ½"
\$500-\$700



49. Gold Stone Knob Dress Cane

Late 19th Century-A symmetrical round knob with more than typical glitter found in this type of mineral, refreshed silver collar and ebony shaft, and a horn ferrule-H. 2" x 2", O.L. 37"
\$400-\$600



50. Flute System Stick Cane

Circa 1880-A painted grain toleware flute shaft and a brass ferrule-O.L. 33 ¼"
\$300-\$500



50.



51. French Erotic Ivory

Sword Cane

Mid to Late 19th Century-A very fine museum quality carving of a nun dressed in a habit exploring the parts of her Rubinesque body. It is one of the finest carved ivories that we have ever presented at auction. The cane has a silver collar, a pair of silver eyelets, a 28 ½" signed "C. Morian of Paris" quad blood grooved blade, slide locking mechanism, honey malacca shaft and a bi-metal ferrule-H. 4" x 2" x 1 1/2", O.L. 37"

\$13,000-\$16,000

51.



52. Carved Erotic Ivory

Circa 1875-A full figure carved, maybe a preacher's wife, leaning against a pulpit. Great detail has been applied to the hair, face, dress and private areas. The wife has carved high button shoes and bows in her hair. It has a fluted silver collar, partially silver inlaid exotic wood shaft and a bi-metal ferrule-H. 4" x 2" x 1 1/2", O.L. 38 1/2"
\$12,000-\$15,000

52.





54.

53. Cigar System Stick Cane

Circa 1950-A nice example of this genre with a brass collar, a metal shaft, glass containers and a brass ferrule-H. 5" x 5 1/2", O.L. 36"
\$200-\$300



56.

54. Sword Cane

Circa 1960-A hardwood sword cane with a 23 1/2" blade, brass collar and a rubber stopper-H. 4 1/4" x 5", O.L. 36"
\$200-\$250

53.



55.



55. "Hartwell Hickory" Cane

Circa 1930-A signed "Hartwell Hickory" walking cane. These were purchased by many early collectors when they could not afford a real flute cane. These canes are found in many collections in the Pittsburg area.- O.L. 35"
\$50-\$100

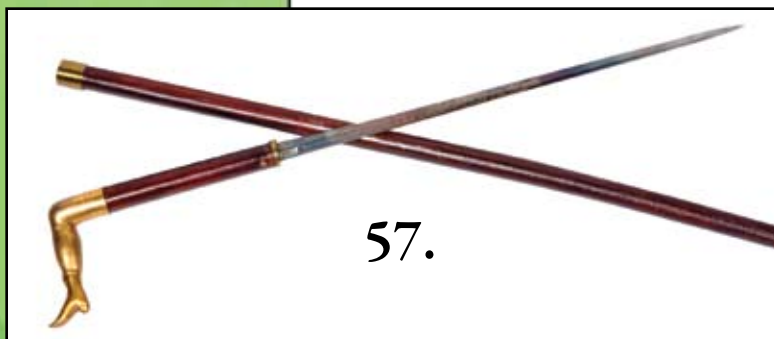
56. Sword Cane

Circa 1920-A painted grained, all metal handle and shaft, a 17" blued and etched blade, nickel silver handle and collar, and a bi-metal ferrule-H. 5 1/2" x 1 1/4", O.L. 33"
\$600-\$900



57. Dance Hall Sword Cane

Late 19th Century-A gilded Western saloon ladies leg, two small brass collars, push button 11" blued and gilded 4-sided blade, original hardwood shaft and a brass ferrule-H. 3" x 5 1/2", O.L. 36"
\$1,000-\$1,500



57.

58. Ivory Sword Cane

Circa 1900-An ivory carved bird handle with a 33" ornate eagle engraved blade, locking brass mechanism, massive mahogany faux bamboo shaft and a carved tree branch ivory ferrule-H. 3 3/4" x 1 1/4", O.L. 37"

\$1,200-\$1,800

59. Civil War Encampment Cane

Dated 1892-A souvenir which states "Annual Encampment G.A.R. September 20th 1892 Washington D.C." with a high relief of General Grant atop, exotic wood shaft and no ferrule-H. 2 3/4" x 1 5/8", O.L. 33"

\$200-\$300

60. Pearl Dress Cane

Circa 1880-Gold filled end cap and collar, m.o.p. handle with fracture, snakewood shaft and a bi-metal ferrule-H. 4" x 1 1/4", O.L. 34"

\$200-\$300

61. Horn and Bone Cane

Late 19th Century-A premium example of this type of segmented cane with spacers over a steel rod, ornate brass medallion atop, probably American made, and a bullet shaped brass horn ferrule-O.L. 32"

\$300-\$400



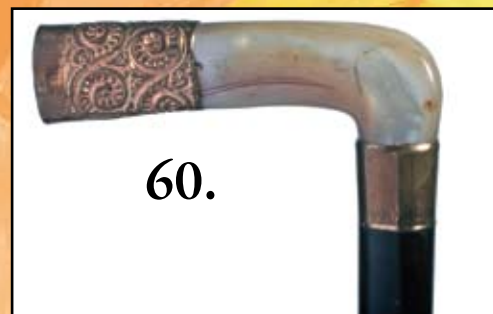
61.



58.



59.



60.

62.



62. French Silver and Enamel Cane

Circa 1900-A prime example in which the top is white guilloché with internally painted roses while the extension is painted in festoons of roses tied with blue ribbon. The remaining 2 3/4" of the handle is in royal purple guilloché. The silver collar has tiny French hallmarks, excellent condition, ebonized shaft and a horn ferrule-H. 1" x 3", O.L. 36"
\$2,500-\$3,500

63.



63. German High Stag Horn Cane

First Half of the 19th Century-An intricately carved handle depicting a pack of hounds taking down a stag. This cane is from a period of time of which hunting was the privilege of the aristocracy in Europe. This outstanding carving is mounted on a malacca shaft, stag horn eyelets and tassel, and a horn ferrule-H. 7" x 3 1/4", O.L. 38"
\$2,000-\$2,500

64. French Ivory Lizard Cane

Circa 1860-The ivory handle is carved to the finest detail with a lizard perched on foliage looking at a grasshopper which is 1/3 the size of the lizard, textured silver collar, rich exotic wood shaft and a 2" ivory ferrule-H. 1 1/4" x 4", O.L. 36 3/4"
\$1,800-\$2,200

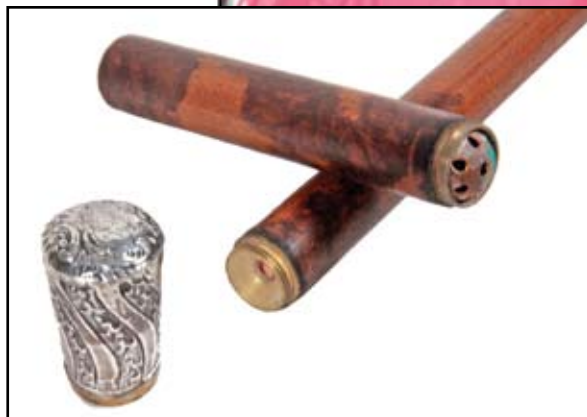


65. Rare Dog Leash System Stick

Circa 1880-An unusual gadget cane that would be used for walking a small dog. The monogram top is removed to expose a vinaigrette or has been suggested a container for pepper to discourage interfering dogs. Nine inches above the ferrule the cane may be pulled apart to expose an 8" chain with clips that would attach to a dog's collar. A similar cane may be seen on page 20 in "Cane Curiosa" by Catherine Dike. This is a very rare system stick in fine condition. It has a naturally worn hardwood shaft, silver and brass handle and a bi-metal ferrule-H. 2" x 1 1/8", O.L. 36 1/4"
\$3,000-\$3,500



65.



66.



66. Rare Sword Cane

Late 18th Century-This near mint example of an English short sword cane has a highly decorated 14" blade of which one side has elaborate oak leaves and the other a crest of a cockerel with a shield and an anchor. The shaft and the handle have silver mounts. The shaft also appears to have a hollowed Arabian onyx to accommodate part of the sword which has a locked catch. All decorative parts of the cane also appear to be silver. It is in very fine condition and has a silver ferrule.-H. 10" x 1 3/4", O.L. 34" \$2,000-\$2,500

67. Asian Cane

Dated November 25th 1878-A bamboo root handle and a silver collar with the presentation "From Walter to his Uncle Nov. 25th, 1878". The 3/4" silver collar also has an engraving of a rabbit presenting flowers. It has a bamboo shaft and a bi-metal ferrule.-H. 6 1/2" x 1 3/4", O.L. 33 1/4" \$200-\$300

67.



68. Cast Iron Victorian Eight Compartment Cane and Umbrella Stand-H. 27", D. 10", W. 10"
\$300-\$500

69. Cast Iron Victorian Cane and Umbrella Stand
H. 35", D. 11", W. 21"
\$300-\$500

70. Oak Cane Case
Circa 1900-A very nice stick and ball cane case which has compartments for 49 canes. The golden oak case is in fine condition.-H. 48", D. 21", W. 21"
\$1,500-\$2,000

71. Glass Parade Cane
Early 20th Century-A one-piece solid twisted end of day glass cane in mint condition-O.L. 46 1/4"
\$200-\$300

72. Ivory L Handle Cane
Circa 1900-A petite ivory handle attached to the shaft by an iron screw, gold filled collar, exotic wood shaft and a metal ferrule-H. 3" x 1", O.L. 33 1/2"
\$150-\$250

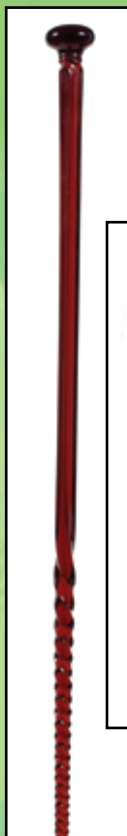


68.

70.



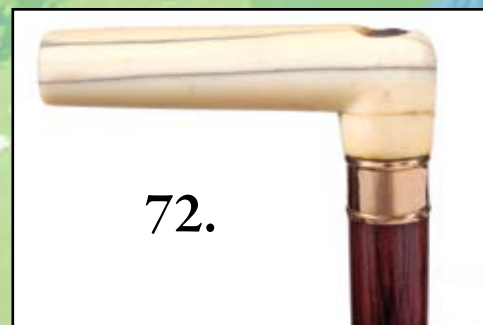
71.



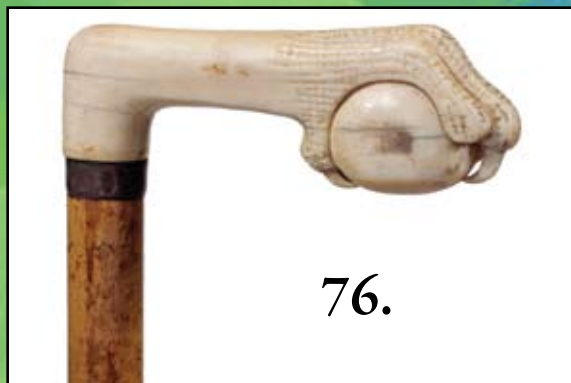
69.



72.



74.



76.



75.



77.



73. Massive Silver Dress Cane

Circa 1875-Hexagonal mushroom style handle with minor dents and dings, live oak shaft and a bi-metal ferrule-H. 1 3/4" x 2 3/4", O.L. 36" \$300-\$500

74. Masonic Folk Art Cane

Dated 1897-A carved 32nd degree Masonic cane with the following high relief carving "From the Capital building of PA. Fire Feb. 2nd 1897 erected May 31st 1819, O.S. Trace"- O.L. 35" \$300-\$500

75. Ivory Opera Cane

Circa 1875-A finely carved handle, ornate copper collar with a blank cartouche and a high relief of a Roman soldier, vintage vine shaft and a bi-metal ferrule-H. 4" x 1 1/4", O.L. 34" \$250-\$400

76. Ivory Talon and Egg Cane

Circa 1880-A petite carved ivory handle, horn spacer, exotic wood shaft and no ferrule-H. 3" x 1", O.L. 32 1/2" \$200-\$300

77. Walrus Ivory Patriotic Cane

Circa 1860-A nice early example of an eagle and shield cane, silver metal collar, malacca shaft, vein crack in rear of the handle and no ferrule-H. 3" x 3", O.L. 33 1/2" \$500-\$600

73.



78. McKinley Presidential Cane

A presidential campaign cane from the McKinley election. Most of these that we see have lost their finish and are in poor condition, but this particular one is fine. It has a hardwood shaft and no ferrule-H. 3 ½" x 2", O.L. 35"
\$200-\$300



78.

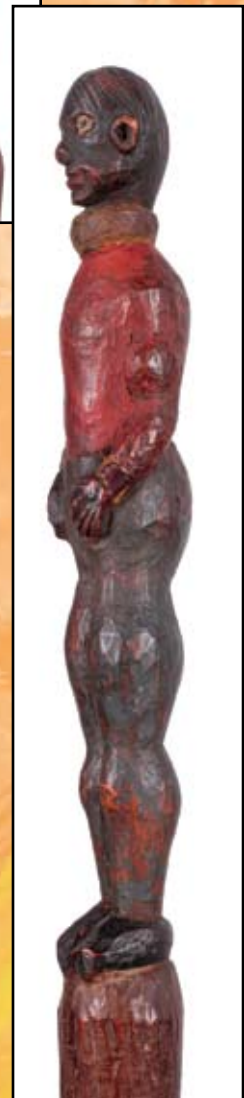


79. Folk Art Minstrel Cane

Late 19th Century-A full figure carving of a minstrel boat actor which is done in black face. The body has its original paint with normal wear, carved from a one piece hickory stick and no ferrule-O.L. 38"
\$800-\$1,200



79.



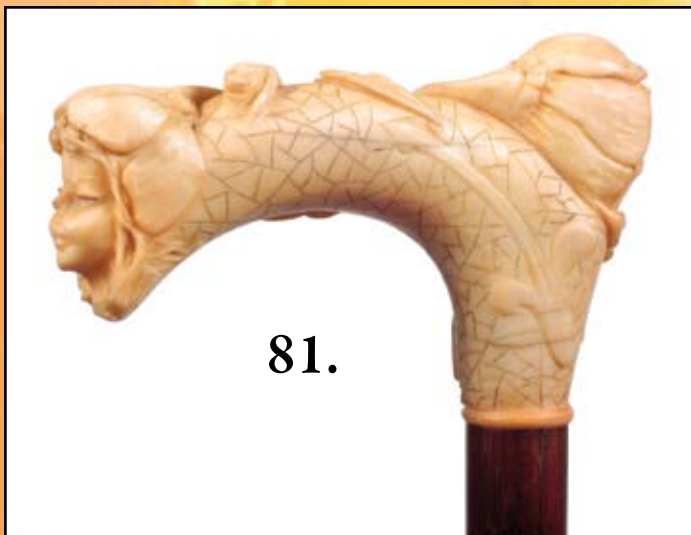
80. French Porcelain Dress Cane

Circa 1900-A cobalt blue hand painted handle with heavy moriage work, two porcelain couples portraits, small gold metal collar, exotic wood shaft and a bi-metal ferrule-H. 3 ½" x 1 ½", O.L. 35 ½"
\$500-\$800



80.





81.

81. Ivory Nymph Dress Cane

Circa 1890-A finely carved handle with both a boy and a girl, small ivory collar, exotic wood shaft and a bi-metal ferrule-H. 2 ¼" x 3 ½", O.L. 35"
\$1,200-\$1,400



82. Asian Ivory Dress Cane

Circa 1890-A finely carved and signed handle with various people and scholars, eagles and houses, ornate fluted bands, exotic wood shaft and an ivory ferrule-H. 6 ½" x 3", O.L. 36 ½"
\$600-\$900



83. Carved Stag Bird Cane

Early 20th Century-A carved tropical bird with two color glass eyes, gold filled end cap and collar, hardwood shaft and a metal ferrule-H. 3 ¼" x 5 ¼", O.L. 35"
\$400-\$600



83.



82.

84. Asian Niello Cane

Circa 1935-A mint condition Asian handle with matching collar, ebony shaft and a metal ferrule-H. 1 $\frac{3}{4}$ " x 1 $\frac{3}{4}$ ", O.L. 35 $\frac{1}{2}$ "
\$300-\$500



85. Ornate Sterling Dress Cane

Circa 1875-A high relief handle with various flowers and leaves, signed sterling ornate collar, mahogany shaft and a bi-metal ferrule-H. 2 $\frac{3}{4}$ " x 2", O.L. 35 $\frac{1}{2}$ "
\$400-\$600

86. Carved Ivory Dress Cane

Circa 1870-An ivory handle which depicts a beautiful child in a hat and ribbed collar, small ivory spacer, mahogany shaft and an ivory ferrule-H. 2 $\frac{1}{2}$ " x 1 $\frac{1}{2}$ ", O.L. 35 $\frac{1}{2}$ "
\$400-\$600



87. German Porcelain Dress Cane

Early 20th Century-A Meissen style porcelain handle with various painted flowers, inscribed gold metal collar, mahogany shaft and a horn ferrule-H. 3" x 1 $\frac{1}{4}$ ", O.L. 35"
\$400-\$600



87.

85.



88.

88. Chanticleer Folk Cane

Early 20th Century-A carved wooden rooster with two color glass eyes, a horn comb and other horn attachments, a rich horn band collar, ebony shaft and a bi-metal ferrule-H. 3 3/4" x 2 1/4", O.L. 36"

\$500-\$800

89. Ivory Dress Cane

Circa 1890-A finely carved flower and leaf presentation, ornate gold metal collar, faux bamboo exotic wood shaft and an ivory ferrule-H. 5" x 2", O.L. 34 1/4"

\$400-\$800

90. Ivory Dove Cane

Early 20th Century-A carved dove with two color glass eyes, signed sterling collar, exotic wood shaft and a bi-metal ferrule-H. 2" x 2 1/2", O.L. 35 1/2"

\$400-\$800

91. Japanese Mixed Metals Cane

Circa 1890-A very unusual handmade handle with silver and gold inlay on both the top and the sides, malacca shaft and a horn ferrule-H. 1" x 1 1/2", O.L. 33 1/2"

\$400-\$700

89.



90.



91.

92. Russian Dress Cane

Early 20th Century-A silver and gold inlaid handle, two ivory bands of which one has a split, ebony shaft and a bi-metal ferrule-H. 1 ½" x 2", O.L. 35 ½"
\$300-\$500



92.

93 Nautical Whalebone Cane

Mid 19th Century-A massive whalebone handle with five baleen spacers and a small baleen disc atop, a one inch in diameter whalebone shaft and no ferrule-H. 6 ½" x 1 ½", O.L. 34"
\$1,800-\$2,200



93.



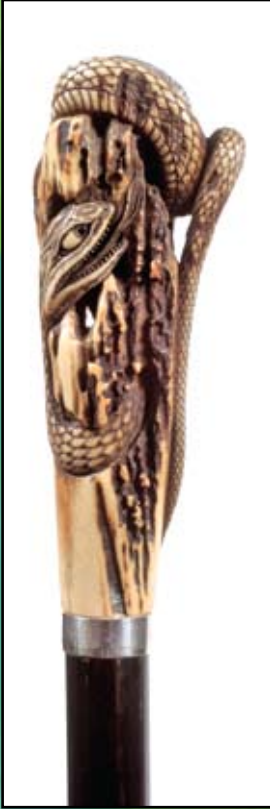
94. Walrus Ivory Nautical Cane

19th Century-A carved ivory fist with a shirt sleeve with baleen inlaid cuff button, three ivory spacers, black palm shaft (indicating South Seas whaling) and a whalebone ferrule-H. 2 ½" x 3 ½", O.L. 36"
\$1,000-\$1,500

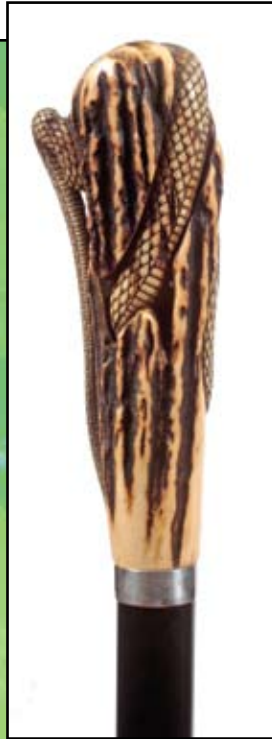


94.





95.



98.



97.

95. Sambar Antler Cane

Circa 1900-Carved antler cane depicting a large snake with a smaller silver snake atop the handle, silver collar, ebonized hardwood shaft and a bi-metal ferrule-H. 6" x 2 1/2", O.L. 34 1/4" \$500-\$800

96. Turquoise and Blackened Steel Dress Cane

Early 20th Century-An unusual dress cane with inlaid turquoise stones, ebonized shaft and a horn ferrule-H. 1 1/4" x 1 1/4", O.L. 34 1/2" \$400-\$500

97. English Mascot Cane

Late 19th Century-A carved ivory puzzle ball with several balls within. The outer ball is carved with a fine and intricate dragon, English hallmarked collar, ebonized shaft and a horn ferrule-H. 2" x 2", O.L. 36" \$600-\$900

98. Silver Knob Dress Cane

Late 19th Century-A signed sterling ornate handle, ornate stepped silver collar, hardwood shaft and a horn ferrule-H. 1 7/8" x 1 1/2", O.L. 38" \$300-\$500

96.



99. Asian Ivory Cane

Late 19th Century-Carved ivory man standing on a stump with a frog on his head, ribbed signed Briggs collar, exotic wood shaft and a horn ferrule-H. 4 1/4" x 1 1/4", O.L. 35 3/4"
\$400-\$600

100. German Art Nouveau Cane

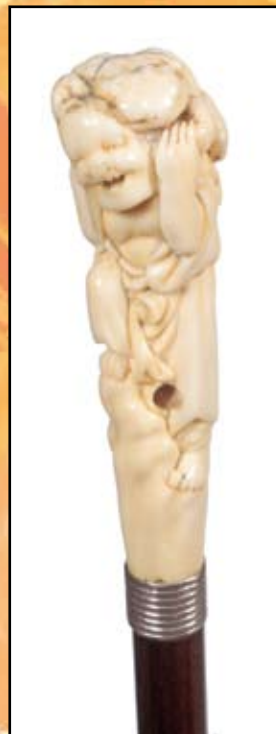
Circa 1890-A stylized silver duck with the crescent moon German hallmark, ebonized shaft and a bi-metal ferrule-H. 3 1/2" x 4 1/2", O.L. 35 1/2"
\$600-\$800

101. Warthog Tusk Cane

Circa 1890-A fine tusk which is attached to a carved ebony collar, also a hand hammered silver collar, bamboo shaft and a ivory ferrule-H. 3" x 4 1/4", O.L. 34 3/4"
\$250-\$400

102. Gold Plated Fetlock Cane

Circa 1925-A massive hoof with detailed work, oak shaft and an original bi-metal ferrule-H. 4 1/4" x 1" x 2", O.L. 35"
\$200-\$400



99.



100.



101.



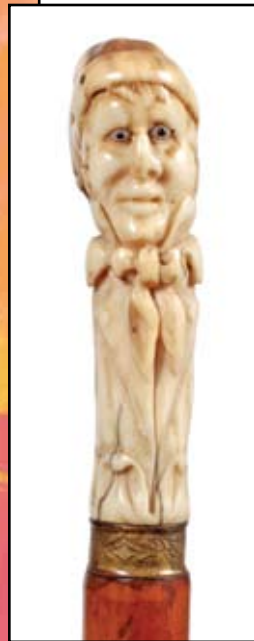
102.



103.



104.



105.

103. Walrus Dress Cane

Circa 1890-Carved ivory handle with a sleeping dove, silver collar, ebony shaft and a bi-metal ferrule-H. 5" x 1 1/2", O.L. 34 1/2"
\$400-\$500

104. German Staghorn Dress Cane

Circa 1890-A carved jester with two color glass eyes, ornate brass collar, malacca shaft and a bone ferrule-H. 3 3/4" x 4 1/2", O.L. 33 1/2"
\$300-\$500

105. Erotic Pewter Cane

20th Century-A one piece cast pewter handle which is probably heavy enough to be called a defensive cane, with naked females which make up the face of the handle, hardwood shaft and a pewter ferrule-H. 4" x 2", O.L. 35 1/2"
\$300-\$500

106. Folk Art Cane

Mid 19th Century-A carved and painted handle, metal collar, natural knob and spur shaft and a 5" brass and metal ferrule-H. 3" x 2", O.L. 35 1/4"
\$400-\$600



106.

107. Carved Coral Dress Cane

Circa 1850-A very unusual carved coral handle which is done in great detail, a gold collar with an unreadable touch mark, malacca shaft and a metal ferrule-H. 1 3/4" x 7/8", O.L. 34 1/2"
\$600-\$1,200



107.



108. Carved Glove Holder Cane

Circa 1900-A large and nicely carved dog head with two color glass eyes, painted mouth and teeth, leather studded collar, hinged lower jaw, silver metal collar, twig spur hardwood shaft and a bi-metal ferrule-H. 3 1/2" x 2 1/2", O.L. 35 3/4"
\$500-\$700



108.



109. Folk Art Cane

Early 20th Century-A carved man with painted eyes, silver metal collar, laurel wood shaft and a horn ferrule-H. 3 1/4" x 2 1/4", O.L. 36"
\$300-\$500



109.



110.



110. Continental High Relief Silver Cane

Circa 1900-An 800 silver handle with a lion-duck-snake-elephant-bull-boar and dogs. The handle has no hallmarks but is much like the work of LeBrun who worked in Vienna. Honey malacca shaft and a small metal ferrule-H. 4" x 3 1/2", O.L. 34" \$1,500-\$2,500

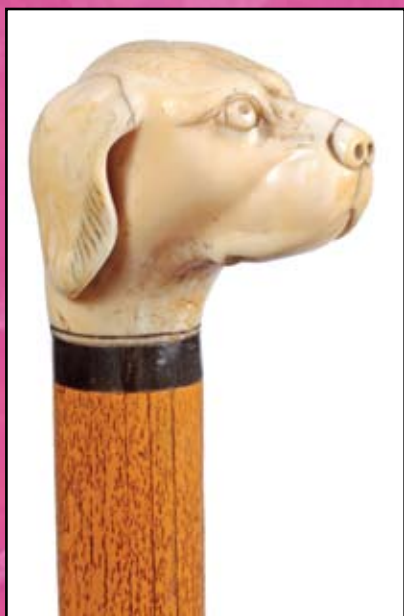
111. African American Carved Cane

Mid 20th Century-A carved walnut handle which depicts a slave which is sleeping, gold metal collar, exotic wood shaft and a horn ferrule-H. 3" x 2", O.L. 36 1/2" \$200-\$300

112. Walrus Ivory Dog Cane

Circa 1870-A massive carved handle done in nice detail, black horn collar, stepped hardwood shaft and an iron ferrule-H. 2 1/2" x 2 1/4", O.L. 36" \$600-\$800

112.



111.



113. Ivory and Silver

Dress Cane

Circa 1890-A fine Art Nouveau example of silver over ivory, signed sterling ornate collar, twig spur shaft and a metal ferrule-H. 1 ¼" x 4", O.L. 35 ¼"
\$400-\$600

113.



114. Ivory Fetlock Cane

Circa 1880-An unusual reversed fetlock ivory handle, ornate gold filled over brass collar, half-bark malacca shaft and a bi-metal ferrule-H. 3 ½" x 1 ½", O.L. 35 ¼"
\$400-\$600

115.



114.

115. Stag Country Cane

Circa 1840-A well shaped antler handle with a silver cartouche with the name Ephral Morgan, silver metal collar, brass eyelets, natural grown and partially carved spiral hardwood shaft and a 2 ¼" steel ferrule-H. 3" x 3", O.L. 35 ½"
\$300-\$500



116. African American System Stick Cane

1880-A signed sterling African American head with pronounced lips and nose, painted red lips, bamboo shaft and a horn ferrule. This is a whimsical smoking cane. By attaching a small tube to a valve in the rear of the head the owner would have blown smoke which would appear through the silver cigarette in the man's mouth. The tube apparatus is missing but we are having a new one duplicated at this time. H. 2" x 1 ½", O.L. 35 ½"
\$1,500-\$2,500



116.



117.



117. Carved Folk Art Cane

Late 19th Century-A carved one piece walnut cane with various animals and plants, original finish and a large brass ferrule-O.L. 32 ½"
\$400-\$600

118. Russian Folk Art Cane

Dated 1942-A WWII Russian folk art cane which has various carvings, a gentleman's head and a pike ferrule-O.L. 37"
\$200-\$400

119. Folk Art Monkey Cane

Circa 1930-A carved one piece stylized cane with a carved spiral near its top and no ferrule-O.L. 40"
\$300-\$400

120. Walrus Ivory Animal Cane

Early 20th Century-A carved ladies cane or large swagger stick with a walrus ivory handle, exotic wood shaft and a five part bi-metal ferrule-H. 2 ½" x 3", O.L. 32 ½"
\$250-\$400

120.



118.



119.



121. Pipe System Stick Cane

Circa 1940-A nice example of a pipe system stick with an enameled top which has some damage, maple shaft and a metal ferrule-O.L. 34"

\$100-\$200

122. Silver and Composition Dress Cane

Circa 1950-A well executed mid century dress cane, rich mahogany shaft and a brass ferrule-H. 5 3/4" x 1 1/2", O.L. 34 1/4"

\$200-\$250

123. Umbrella System Stick Cane

Circa 1950-A hardwood carved telescoping shaft, umbrella in nice condition and a metal ferrule-O.L. 34 1/2"

\$150-\$250

124. Sword Dress Cane

Circa 1920-A crutch handle sword cane with a silver metal end cap, a signed 32" Toledo blade, silver collar, separated oak shaft which needs repair and no ferrule-H. 6" x 4 1/2",

O.L. 37 1/2"

\$200-\$300



121.



124.



122.



123.





125.

125. Pipe System Stick

Circa 1950-A typical pipe cane, black ebonized bowl and shaft and no ferrule-O.L. 34"

\$100-\$200



126.

126. Folk Art Bird Cane

Early 20th Century-A naturally grown stylized bird with abalone eyes, tropical wood shaft and a rubber stopper ferrule-H. 3" x 5 1/2", O.L. 33"

\$100-\$200

127. Telescope System Stick

Late 19th Century-A three draw brass telescope with original lenses and lens lock, rich grained painted shaft and a metal ferrule-H. 3" x 5", O.L. 35", length of telescope is 14"

128. Carved Gator Cane

Circa 1935-A nicely carved gator, orange wood faux bamboo shaft and a metal ferrule. Shaft has a repaired break about 12" above the ferrule-H. 5 1/2" x 2", O.L. 35"

\$100-\$150



127.



128.

129. Umbrella System Stick

Circa 1930-A typical example of this type, ribbed copper collar, telescoping shaft, nice silk umbrella and a copper ferrule-O.L. 33"

\$150-\$250

130. Tippler's Cane

Circa 1970-A nice example of this type of cane with five 1 ½ ounce glass vials, brass collar, metal shaft and brass ferrule-O.L. 36 ½"

\$100-\$150

131. Brush System Stick Cane-

Circa 1930-Silver plated handle which has an unreadable signature, 5 ½" brush which was made by "Combination Brush and Cane Company, New Haven Conn., pat. Applied for", cherry stained, hardwood shaft and no ferrule-H. 1 ¼" x 1 ¾", O.L. 31"

\$300-\$500

132. Civil War Cane

Late 19th Century-The cane is inked "Cut of the center of Pines Battlefield where 15,000 soldiers were killed May 31st of 1862 fought by Lee and McClellan" etc. etc., natural twig shaft cane and no ferrule-O.L. 34 ½"

\$200-\$400



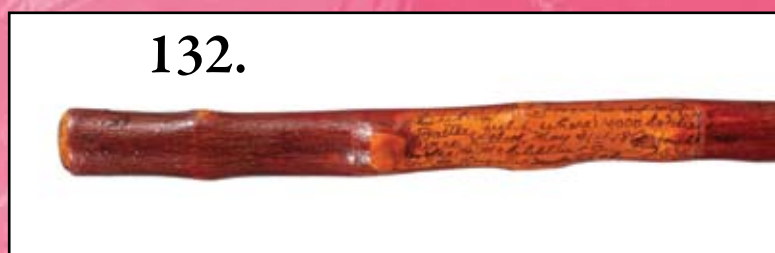
129.



130.



131.



132.



133.

133. Horn Dress Cane

Circa 1875-A crook handle horn, large silver collar, thick malacca shaft and a horn ferrule-H. 3" x 4 1/2", O.L. 34"
\$200-\$300



134.

134. Cologne System Stick

Circa 1925-A silver metal handle which opens to expose one glass vile which has a cork top, painted hardwood shaft and a metal ferrule-H. 1 3/4" x 1 1/4", O.L. 37"
\$150-\$250

135. Ivory Dress Cane

Circa 1925-An ivory Art Deco handle, faceted signed sterling collar, ebonized shaft and a horn ferrule-H. 1" x 1 1/4", O.L. 35 3/4"
\$200-\$300



135.

136. Pewter Dress Cane

Circa 1900-An unusual pewter handle with gold filled cartouches, full bark malacca shaft and a bi-metal ferrule-H. 2 1/2" x 1 3/4", O.L. 35"
\$100-\$150



136.

137. Day's Patent Percussion Cane Gun

Mid 19th century- This example is in a rich mahogany case. The stock has not been refinished as most of these have. It has two cane barrels with plug ferrules and all of the accouterments. Also there is a 5" pistol barrel for use as a handgun only but it also attaches to the shaft. This is a museum quality example. OL-34 ½"

\$5000-\$8000

137.



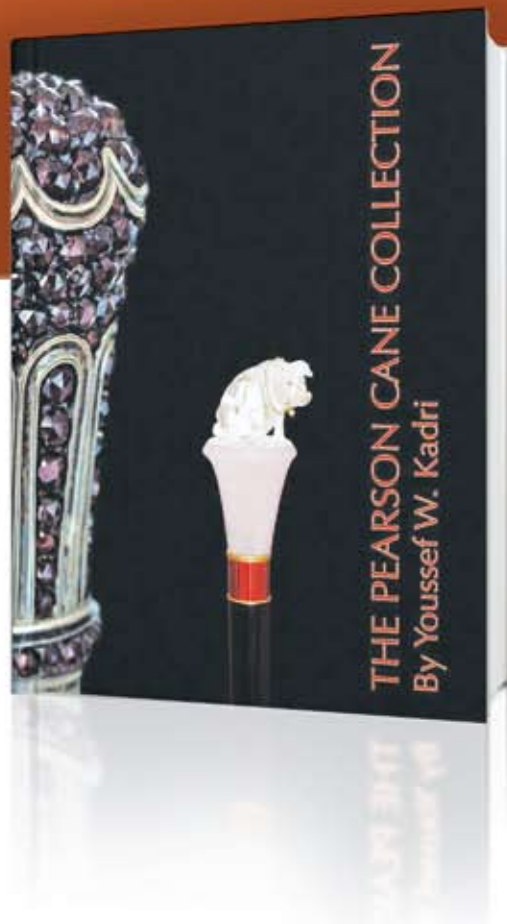
Please join us online after the catalogue sale for many more canes that we will be offering with live internet bidding.

KIMBALL M. STERLING, INC.

Dear Cane Enthusiast,

I am happy to announce the release of a new and exciting book
THE PEARSON CANE COLLECTION.

It is a 210 page, full color hardback book highlighting the World class collection of Bob Pearson. The book has been written by Youssef Kadri and is a must addition to your library.



\$130.00

+\$6.00 shipping

The book may be
ordered by phone
423.773.4073

or email
kimballsterling@earthlink.net

Kimball M. Sterling, Inc. (TFL-1915)
125 West Market Street
Johnson City, Tennessee 37601
kimballsterling @ earthlink.net
423.928.1471

Member National Auctioneers Association
© Copyright 2010 Kimball M. Sterling, Inc.



Photography by *James Price*

Catalog Design by *KT Design, LLC*
www.kristaft.com