

WWW.AUCTIONAUCTION.COM

**KIMBALL & VICTORIA STERLING
PRESENT THE**

HENRY "HANK" BARTH

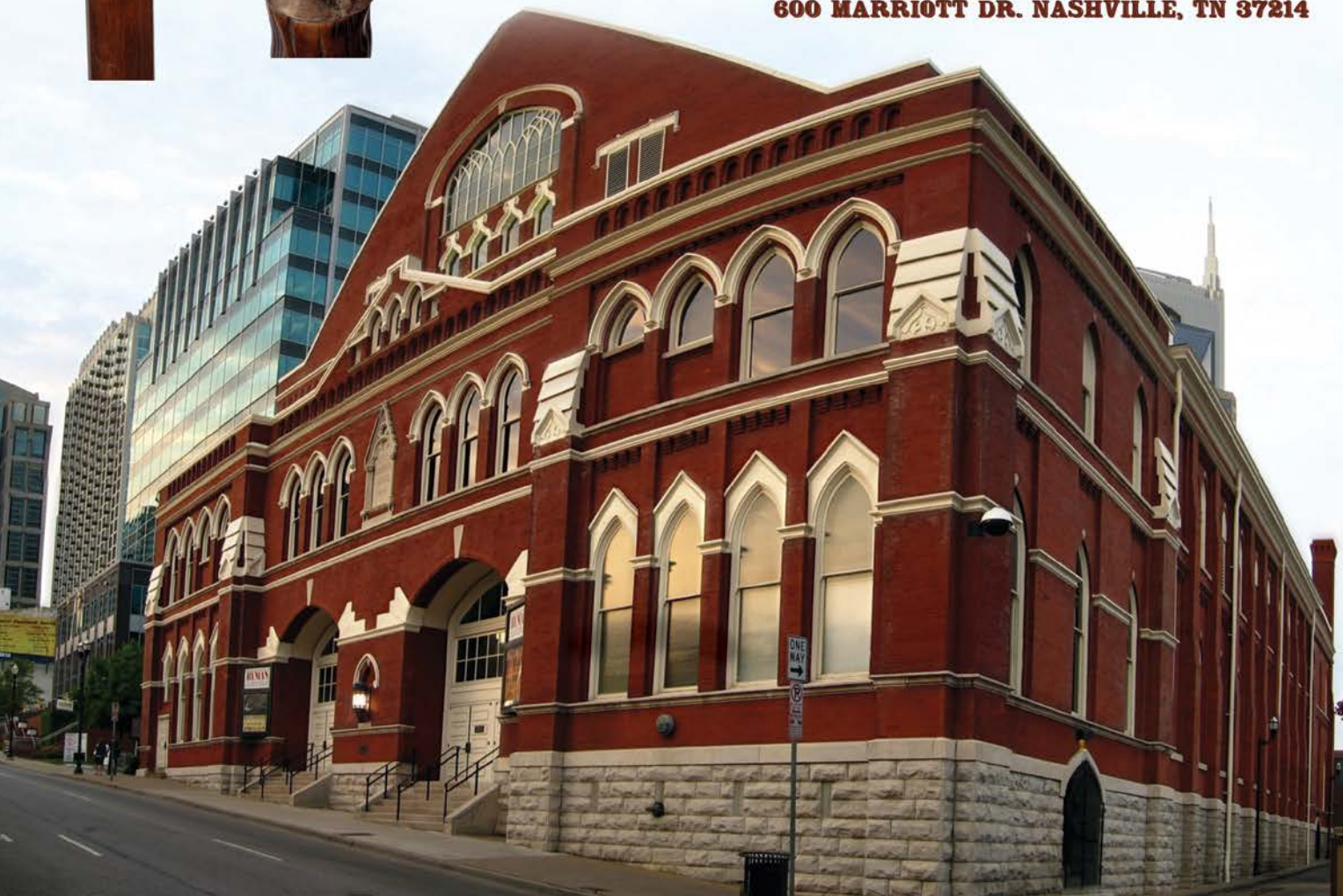
ESTATE CANE AUCTION

**SATURDAY,
SEPTEMBER 8TH, 2012**

11:00 A.M. CENTRAL TIME

PREVIEW AT 9:30 A.M.

**NASHVILLE MARRIOTT AIRPORT HOTEL
600 MARRIOTT DR. NASHVILLE, TN 37214**



TERMS & CONDITIONS

1. Cash or check. A 20% buyers' premium will be added to the hammer price as part of the sale price for all bidders. We reserved the right to hold purchases until the buyers checks clears if buyer is not known by us. Bank letter of credit is acceptable.

require a deposit.

3. Kimball M. Sterling, Inc. has endeavored to catalog and describe the property correctly. All property is sold as is and neither the auction company nor the consignor will be responsible for descriptions, genuineness, provenance or condition of the property. No statement in the catalog made orally at the sale or otherwise shall be deemed to be a warranty, representation, or an assumption of liability.

4. In the event of any dispute between bidders, the auctioneer shall have total discretion to determine the successful bidder, in which his

resale the article in dispute. Title of the item or items purchased by the bidder will pass at the fall of the gavel and declaration of bidder. This is not an approval auction. All measurements are approximate.

5. Principal auctioneer: Kimball M. Sterling #2467. B. Elizabeth Sterling, auctioneer # 5757.

6. Bidders may bid live on the Internet by visiting <http://www.auctionauction.com> You may also view the auction at this site and bid by phone.

7. After Sept 6th all communication should be directed to 423-773-4073, and 7072. The Fax will not be checked at the home office. You can email- kimballsterling@earthlink.net

Communications:

Email kimballsterling@earthlink.net

available. Mr. We do not ship protected items overseas but can put you in contact with a source that is very reliable and can handle all of your needs.

responsible for bids received on the day of the auction, unexecuted absentee bids, phone bidders not contacted or slow Internet bids. Although we do attempt to get all bids executed problems do occur. There will be no recourse from the bidder. We will not be responsible for items left on our location for over 30 days.

10. Sale will be conducted at 600 Marriott Dr. Nashville, Tennessee 37214. Announcements

advertising. Any litigation that pertains to this auction will be conducted in the county of Washington in Tennessee and is agreed upon by registering for this auction.

11. The direct line for reservations at the

Kimball Sterling Cane Auction rate. The hotel is located about three minutes from the airport.

12. Please call for condition report on sale lots or email us. We do send out multiple photos by email of any lot in the auction. By registering for this auction you accept the terms.

WWW.AUCTIONAUCTION.COM



KIMBALL & VICTORIA STERLING

"PRESENT" THE

HENRY "HANK" BARTH

ESTATE CANE AUCTION

**SATURDAY,
SEPTEMBER 8TH, 2012**

11:00 A.M. CENTRAL TIME

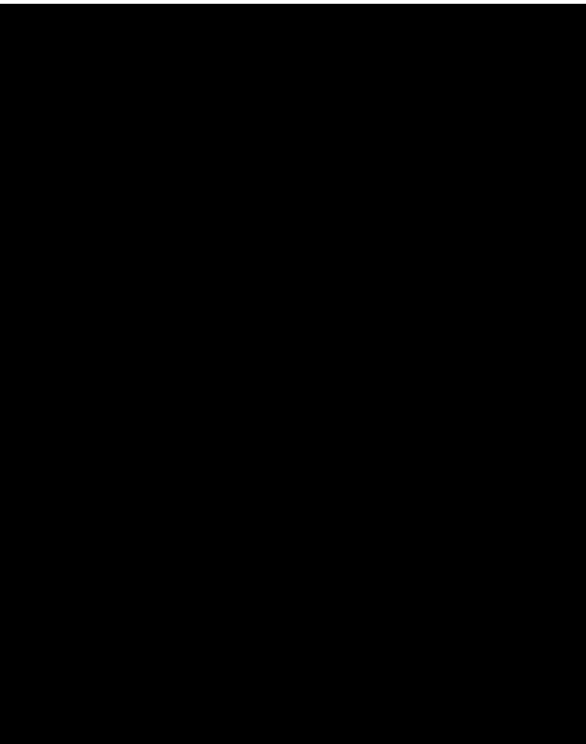
PREVIEW AT 9:30 A.M.

**NASHVILLE MARRIOTT AIRPORT HOTEL
600 MARRIOTT DR. NASHVILLE, TN 37214**

**KIMBALL M. STERLING AUCTION GALLERY
125 WEST MARKET STREET
JOHNSON CITY, TENNESSEE 37601
KIMBALLSTERLING @ EARTHLINK.NET
423.928.1471**

**LIVE ON THE INTERNET AT
LIVEAUCTIONEERS.COM
TWO TIME WINNER OF BEST OF SHOW
FROM THE NATIONAL
AUCTIONEERS ASSOCIATION**





1.

1. Ivory Horse Head Gun Cane

Ca. 1895-A finely carved ivory horse head handle with painted eyes, English hallmarked coin silver collar, with the initials "J.D.", engraved on the collar is also the name "Josiah J. Barty, Boston". The cane has another collar which is the locking mechanism for the signed "Brigg Pat." four barrel gambler's derringer with a 6" 4-sided pike blade, mechanism retains much of its original bluing and is working, approximately a 25 caliber shell, rich malacca shaft and no ferrule. H. 4" x 1 1/4", O.L. 34" \$2,500-\$3,500

2.



2. Faberge Style Rock Crystal Cane

20th Century-This cane is done much in the style of the early Faberge canes. However, it does have the marks of Karl Gustav Halmar Armfelt, St. Petersburg Kokoshnikada. The gold dore frog with emerald eyes is pinned to the rock crystal, two color blue enamel and silver collar and the handle unscrews from the ebony shaft, a very high quality after market cane. H. 3 1/2" x 1 1/2", O.L. 36" \$3,000-\$4,000

3.



3. Japanese Export Ivory Cane

Meiji Period-A nice ivory export handle with apes and snake, ebony shaft which is carved to look much like a narwhal tusk, ivory collar and a horn ferrule. H. 3 1/4" x 1 1/2", O.L. 35" \$1,500-\$2,000



4.

4. Ivory Tiger Cane

Ca. 1880-A very well carved ivory handle, mallaca shaft, ivory eyelets and bone ferrule.

H. 2" x 2.5", O.L. 35.75"

\$1,500-\$2,500



6.

5. Ivory Gambler's Cane

Ca. 1925-An inlaid ivory dice, small ivory collar, ebony shaft and a very unusual ivory bullet ferrule-H. 1 3/8" x 1 3/8", O.L. 36"

\$500-\$700

6. American Patriotic Bald Eagle Cane

19th Century-Ivory bold eagle over the National Shield with three stars, detailed feather coat, snakewood shaft and a long horn ferrule-H. 3" x 2", O.L. 35 1/2"

\$1,000-\$2,500

7. Carved Ivory Peasant Cane

Ca. 1890-A nicely carved young gentleman, rich malacca shaft with the initials A.G. in gold attached and a horn ferrule.

H. 5" x 1 3/4", O.L. 36"

\$1,000-\$1,500

5.



7.





8.

9.

8. Ivory Sword Cane

Ca. 1900-An ivory carved bird handle with a 33" ornate eagle engraved blade, locking brass mechanism, massive mahogany faux bamboo shaft and a carved tree branch ivory ferrule-H. 3 $\frac{3}{4}$ " x 1 $\frac{1}{4}$ ", O.L. 37"

\$1,200-\$1,800

9. English Ivory Dachshund Cane

Ca. 1900-Ivory ball knob carved with eight dachshund under an umbrella, ebony shaft with wide and personalized silver wrap collar with London hallmarks, metal ferrule-H. 2" x 1 $\frac{1}{2}$ ", O.L. 35"

\$1,800-\$2,500

10.

11.

10. English Ivory Tropical Bird Cane

Late 19th Century-Well carved, large and beautiful head with glass eyes, silver collar, full bark malacca shaft and a 2 $\frac{1}{4}$ " long ivory ferrule-H. 4 $\frac{3}{4}$ " x 2 $\frac{1}{4}$ ", O.L. 35 $\frac{1}{2}$ "

\$1,000-\$1,500

11. Ivory Nursery Rhyme Cane

Late 19th Century-A carved large ivory handle, Malacca shaft, wide silver collar with London Hallmarks and a metal ferrule. This rendition of Little Jack Horner has its original patina-H. 5 $\frac{1}{4}$ " x 2 $\frac{1}{4}$ ", O.L. 35 $\frac{1}{4}$ "

\$1,500-\$2,500

12. Ivory Pique

Ca. 1790- This is a fine example of the genre. Piqued into the handle are circles, flowers and geometric designs. The top has a piqued flower blossom with six sides and the collar is a scalloped coin silver attached to a massive malacca shaft with handmade brass nails. It has a 2 ½" brass and iron ferrule. The handle has a pair of lanyard holes which are circled by a silver pique work which are encompassed by a six-sided flower much like the top. This is a nice original cane-H. 4" x 1 ½", O.L. 38" \$3,000-\$4,000

13. Ivory Whale Cane

19th Century-A substantial whale tooth ivory handle carved to depict a sperm whale, ebony shaft, horn ferrule and a chased silver collar engraved "J.R. KERSHAW COMPSTAU"-H. 4 ½" x 1 ¼", O.L. 38 ¼" \$1,000-\$1,500

14. European Ivory Lion's Head Cane

Early 19th Century-A finely carved ivory handle with the King of the Jungle, glass eyes, ebony shaft and a white metal ferrule.-H. 3 ½" x 1 ¾" \$400-\$700

15. Chinese Cloisonné Cane

Ca. 1880-A nice example of this work in a rounded ball shape with integral stem and vivid colors on a dark background. Ebony shaft with a tiny brass ferrule. -H. 2" x 1 ¾", O.L. 36 ½" \$300-\$400



12.



13.

14.

15.

16. Tiffany Ivory and Silver Cane

Ca.-1902-1907 -Elephant ivory and silver handle, signed "Tiffany & Co, Makers, Sterling" and "C". The handle unscrews from a threaded orangewood shaft and a horn ferrule. H. - 2.5" x 1.25" O.L. 35.2"
\$1,500-\$2,500

17. Shibayami Ivory Dress Cane

Late 19th Century-This Japanese cane has a group of nine insects which are masterfully carved and decorated with semi precious gem stones, signed handle with five oriental characters, unsigned fluted silver collar, exotic natural shaft, and a copper and iron ferrule. This piece of art speaks for itself.-H. 1 5/8" x 1 1/2", O.L. 31 1/2"
\$2,000-\$2,500

18. Ivory and Wood Dress Cane

Ca. 1885-A well executed carved wood and ivory bearded gentleman handle with two color glass eyes, ivory collar, ebony shaft and a horn ferrule-H. 4" x 3 1/2", O.L. 35 3/4"
\$400-\$500

19. Ivory Lion Cane

Ca. 1885- Ivory lion, hallmarked British silver collar by Swaine & Adeney, stepped ebony shaft. H. - 4 1/2" x 1 1/2" 38", O.L. 38", horn ferrule
\$500-\$800

20. Art Deco Sharkskin Cane

Ca. 1925- Oval dress cane, ebony shaft,, horn ferrule. O.L -35.5"
\$200-\$250

17.

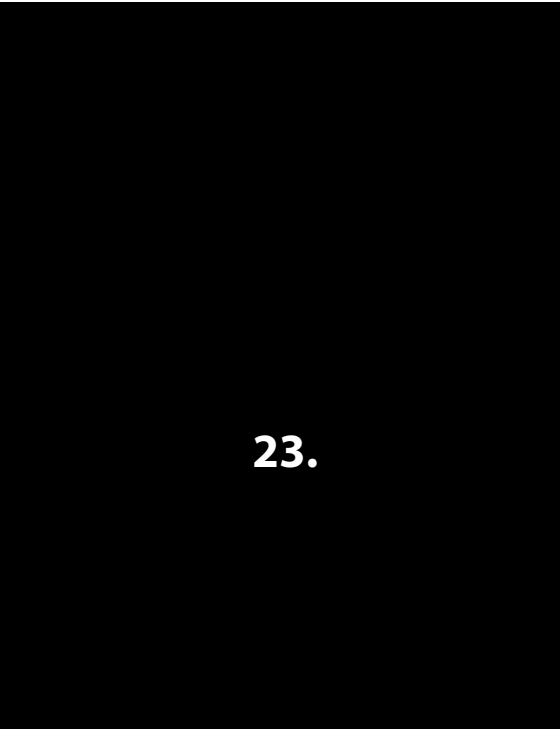
16.

18.

19.

20.





23.

21.

21. Sterling Lion Cane

Ca.1940-Sterling silver cat with two color glass eyes, mahogany shaft, metal ferrule
\$400-\$600

22. Brigg Sterling Cobra Cane

Ca-1935- Silver handle, two color glass eyes, ebony shaft, metal ferrule- H.-3" x 3" O.L-35"
\$500-\$600

23. Rock Crystal Eagle Dress Cane

Early 20th Century-A beautiful carved rock crystal handle with enameled eyes, unmarked gold collar with stars, ebony shaft and a horn ferrule-H. 3 1/4" x 2 1/4", O.L. 35 1/2"
\$800-\$1,200

24. Gold Dress Cane

Ca. 1920-Unsigned but tested to be 14k, ornate compass collar, exotic wood shaft and a horn ferrule-H. 1" x 2 3/4", O.L. 35"
\$500-\$700

22.

25. Gold Sunday Stick

Ca. 1925-The cane has an unreadable hallmark, but appears to be much like the hand of Cartier, both rose and yellow gold alternate on the handle, exotic snakewood shaft and a horn ferrule-H. 3 1/4" x 2 1/4", O.L. 37"
\$400-\$600

26. Silver Horse Cane

Ca. 1900-A signed 800 silver ornate cast handle, ebony shaft and a horn ferrule-H. 3 1/2" x 2", O.L. 35 1/2"
\$400-\$500

24.



25.

26.

27. Continental Dress Cane

Ca. 1850-A massive cast and signed 800 silver handle, pair of silver eyelets, massive malacca shaft and a bi-metal ferrule-H. 5" x 1 3/4", O.L. 36 1/2"
\$500-\$1,000

28. Aventurine Quartz Dress Cane

Early 20th Century- Substantial shimmering green aventurine quartz French handle with a chased silver collar and ebony shaft with a horn ferrule. H. 3" x 1 1/4", O.L. 37 1/4"
\$600-\$1,000

29. English Dual Purpose Compound Cane

Ca. 1880-Gun metal container knob with an unfolding, hinged and jeweled top on a cylindrical collar engraved Countess of Coventry, 1 Balfour Place, Park Lane, W. Pepperwood shaft and a brass ferrule-H. 1 3/4" x 1 3/4", O.L. - 36"
\$400-\$500

30. Articulated Monkey Cane

Ca. 1885-A carved glove holder with two color glass eyes, push button lower jaw, leather collar, malacca shaft and a horn ferrule-H. 4 3/4" x 3 1/2", O.L. 36"
\$500-\$700

31. Carved Ebony Dog Cane

Ca. 1890-A very nicely carved dog with two color glass eyes, ornate brass collar, a very unusual twig spur ebony shaft and a brass ferrule-H. 3" x 1 1/4", O.L. 35 1/2"
\$300-\$400

29.

27.

28.

30.

31.



32.



33.

32. Reversed Ivory Fist Cane

19th Century-A carved ivory clenched right hand with a shirt sleeve and twist rope collar, malacca shaft and a long ivory ferrule. Unusual motif in a substantial size.-H. 2 ¾ x 2 ¼", O.L. 34 ¾" \$1,500-\$2,000

33. Viennese Bear Cane

Late 19th Century-Heavy cast silver bear head naturalistically modeled with long snout and tiny eyes embedded in shaggy hair, smooth partridge and a metal ferrule. In the taste of Bergman .H.-2" x 1.5" O.L.-35.75" \$800-\$1200

34. Paperweight Glass French Cane

Late 19th Century-Solid glass art latticino and rose colored glass knob with integral stem, metal collar, flamed lemonwood shaft and a horn ferrule-H. 1 ¾" x 1 ¾", O.L. 34 ½" \$400-\$600

35. Ivory Boar Dress Cane

Ca. 1885-A massive carved handle done in great detail, two color glass eyes, signed sterling ornate collar, massive ebony shaft and a bi-metal ferrule-H. 4 ½" x 2" x 1 ½", O.L. 36" \$1,000-\$1,500

34.

35.

36.

36. Horse Dress Cane

Mid 20th Century-A unique silver plated handle and collar, ebony shaft and a brass ferrule-H. 3 ½" x 1 ¼", O.L. 36" \$200-\$300

37. Silver Dress Cane

Ca. 1880-A cast solid silver handle of a man's face placed upon the mouth of a wild beast, beaded collar, ebony shaft and a horn ferrule.

Probably a defensive cane.

H. 3 1/2" x 1 5/8", O.L. 35"

\$400-\$700

38. Asian Ivory Dress Cane

Ca. 1890-A thousand face ivory handle which is signed with Oriental black characters, unsigned ornate sterling collar, ebony shaft and a horn ferrule.

H. 1 3/4" x 1 1/2", O.L. 36"

\$500-\$700

39. Asian Ivory Dragon Cane

Ca. 1890-An interesting carved ivory handle with a three toed dragon (a sign of good luck), signed sterling collar, ebony shaft and a horn ferrule-H. 5" x 1 1/2", O.L. 39"

\$800-\$1,200

40. Ebony and Ivory Dog Cane

Ca. 1890-A whimsical carving with an ivory snout and an ebony head, two color glass eyes, twigspur hickory shaft and a brass ferrule.

H. 4 3/4" x 1 1/2", O.L. 33 1/2"

\$500-\$700

41. Ivory Dress Cane

Ca. 1920-A carved ivory handle of a young man wearing a large fluted collar with smiling suns and moons throughout his pajamas, white metal collar, ebonized shaft and a metal ferrule-H. 4 1/2" x 1 1/4", O.L. 36"

\$300-\$500

42. Dragon Silver Dress Cane

Ca. 1900-A signed 800 German handle of St. George slaying the dragon, rosewood shaft and a horn ferrule-H. 4" x 1 3/4", O.L. 37"

\$500-\$700

40.

37.

38.

39.



36.

41.

43.

43. Classical Ivory Dress Cane

Ca. 1820-A classic Greek carving with Apollo and other Gods, ornate carved flower atop, malacca shaft with lanyard hole, and a metal ferrule-H. 3" x 1 1/2", O.L. 33"
\$500-\$700

44. French Pocket Watch Cane

Ca. 1850-A signed "Romilly" Paris coin silver key wind watch, thick bamboo shaft with coin silver eyelets and a 3 1/2" brass ferrule. H. 2" x 2", O.L. 33"
\$700-\$1,200

45.

45. Silver Dress Cane

Early 20th Century-A unique cast solid silver handle with various hounds chasing a wild boar, thick ebony shaft and a horn ferrule-H. 4 1/2" x 3 1/2", O.L. 36"
\$700-\$900

46. Faberge Style Figural Hardstone Cane

Russian 1900-Kascholong milky white opal little bear, silver laurel leaf collar, real malacca shaft with eyelets and a metal ferrule. Exceedingly rare and intact-H. 2 1/4" x 2 1/4", O.L. 36 1/4"
\$1,500-\$2,500

47. Asian Silver Dress Cane

Ca. 1890-A massive silver handle with a high relief casting of a lion chasing lambs, small silver collar, coin silver eyelets, honey malacca shaft and a horn ferrule-H. 3" x 1 3/8", O.L. 37"
\$400-\$500



44.

47.

48. Art Deco Dress Cane

Ca. 1930-An unusual one piece
snakewood triangle shaft, silver
overlaid handle and a bi-metal
ferrule-H. 4 $\frac{3}{4}$ " x 3 $\frac{1}{4}$ ", O.L. 36"
\$600-\$900

48.

49. Walrus Eskimo Ivory Cane

Early 20th Century-A stylized
carved ivory handle with baleen
eyes, arts and crafts gold-filled
collar, mahogany shaft and a horn
ferrule-H. 7 $\frac{1}{2}$ " x 1 $\frac{3}{4}$ ", O.L. 36 $\frac{1}{2}$ "
\$500-\$700

50. Ivory Snake and Frog Cane

20th Century-Carved ivory handle
with a snake swallowing a frog,
signed sterling ribbed collar, rich
snake skin shaft and a 1 $\frac{1}{2}$ " ivory
ferrule-H. 5" x 1 $\frac{1}{2}$ ", O.L. 36"
\$600-\$1,000

51. Russian Ivory Bear Cane

19th Century-L-shape ivory handle
with a clamping bear, stepped
partridge shaft and a brass ferrule.
-H. 6 $\frac{3}{4}$ " x 3", O.L. 35 $\frac{1}{4}$ "
\$1,500-\$2,000

52. Knob Kerrie Bronze Cane

19th Century-Heavy bronze handle,
leather collar, full bark malacca shaft
and a horn ferrule. The handle is 5 $\frac{1}{2}$ "
high and is cast in the shape of an
exotic bird-O.L. 37 $\frac{1}{2}$ "
\$500-\$700



51.

52.

53.



53. Porcelain Phrenology Head Cane

Ca. 1865-Crackle glaze, black lettering with gold highlighting. All writing is readable and in near mint condition. Gold collar, ebony shaft and metal ferrule. Former Dr. Michael Roth Collection. H. 2.5/8" x 1.1/3"
\$3,000-\$4,000

54. Holuska Watch Cane

Ca. 1880-A fine example of this genre of system stick which has all of its original hallmarks and is also signed sterling, original watch and setting stem, rich malacca shaft and a metal ferrule. H. 1 1/2" x 1 1/2", O.L. 36"
\$1,200-\$1,800

55. Owl Dress Cane

Ca. 1900-A massive carved owl with two color glass eyes, hallmarked silver overlay, leather collar, dark rosewood shaft and a horn ferrule. H. 7" x 2 1/4", O.L. 40 1/2"
\$700-\$1,000

56. Owl Antler Cane

Early 20th Century-Four carved owls with glass eyes, horn end cap and small collar, mahogany shaft and a stag ferrule-f
\$500-\$600

55.



54.

56.

57. Nautical Ivory Presentation Cane

Dated 1912-A carved ivory albatross with two color glass eyes, ornate British hallmarked collar by J. H., inscribed "Presented to J. T. Canton by the shipwrights on his retirement from Vickers L.D., Barrow, 18 Dec. 1912", stepped hardwood shaft and a brass ferrule. H. 4" x 1.25" O.L. 34 1/4"
\$1,500-\$2,000



57.

58. Pig Ivory Dress Cane

Late 19th Century-A very formal presentation of a tusk with multiple silver rosettes, silver end cap, ornate signed sterling collar which is inscribed to "J. Kluge", oak shaft and a metal ferrule-H. 3" x 4", O.L. 34 1/2"
\$400-\$500

59. Pig Ivory Snuff Box Cane

Late 19th Century-Natural tusk with coin silver spade shaped end cap hinged box, hammered unsigned crown silver collar, natural wood shaft, and signed sterling and ivory ferrule-H. 6" x 1 1/2", O.L. 37"
\$400-\$500

60. Alligator Pig Ivory Cane

Late 20th Century-A large carved tusk done in great detail, from the work shop of Charles Daugherty, exotic wood shaft and an ivory ferrule-H. 6" x 3", O.L. 37"
\$500-\$700

58.

61. Lapis and Gold Dress Cane

Ca. 1930-A hammered gold handle with a lapis disc atop, exotic wood shaft and a horn ferrule-H. 1 1/2" x 1 1/2", O.L. 36"
\$500-\$800

60.

61.

63.



64.



62. Ivory Animal Cane

Dated 1909-A massive carved ivory handle with bears or dogs or cats with two color glass eyes, ornate inscribed and dated silver collar, ebonized shaft and a metal ferrule.

H. 6" x 1 1/4" x 2 1/4", O.L. 36"

\$700-\$1,200

63. Important Ivory Bull Dog Cane

Late 19th Century-A superb life like ivory carving with two color glass eyes, open mouth which was possibly used to hold a cheroot, diamond studded and buckled signed sterling collar, original exotic wood shaft and a bi-metal ferrule.

H. 3" x 2 1/2" x 2 1/4", O.L. 36"

\$2,500-\$3,500

64. Nautical Whalebone Cane

Ca. 1870-A carved whale's tooth clinched fist with ruffles, unique carved whalebone shaft with various carvings on 80% and no ferrule. The first 6 inches of the shaft is hexagonal with baleen spacers.

H. 2 3/4" x 1 1/2", O.L. 36 1/2", Diameter at top of shaft 1 1/16"

\$3,500-\$4,500

65. European Flick Stick Cane

Ca. 1865-A uniquely carved handle from Briar, 7" locking blade, rain drop malacca shaft and a 2 1/2" horn ferrule-H. 2" x 2 1/4", O.L. 34 1/4"

\$1,300-\$1,800

65.

66. Ivory Nautical Cane

Dated 1868-A Turk's knot handle, hexagonal upper collar which has tortoise, ivory and baleen inlaid, inscribed metal collar "Captain J. O. Norton 1868", sugar maple shaft and a brass ferrule-H. 3" x 1 3/4", O.L. 33 1/2" \$1,300-\$1,800

67. Ivory Owl and Hag Dress Cane

Dated 1922-A carved ivory handle which is separated into two sections including an owl with two color glass eyes and a hag, inscribed and hallmarked British coin silver collar, twigspur shaft and a modern rubber stopper-H. 2" x 2", O.L. 36 1/2" \$500-\$800

68. Native American Turquoise and Silver Cane

Mid 20th Century-An L shaped silver handle which is signed "B. A. S.", coral and various colors of turquoise with a large piece for the end cap, ebonized shaft and a horn ferrule. H. 4 1/2" x 4 1/2", O.L. 33" \$500-\$700

69. Wart Hog Tusk Cane

Ca. 1930-A large tusk with a sterling point and signed sterling support, silver collar, ebonized shaft and a bi-metal ferrule-H. 5" x 2", O.L. 38" \$400-\$600

70. Ivory Snake Cane

Ca. 1940-A carved ivory snake with two color glass eyes, gold filled attached snake to handle and collar, hallmarked but unreadable gold collar, ebony shaft and a metal ferrule-H. 4 1/2" x 1 1/2", O.L. 35 1/2" \$500-\$800

71. Pig Ivory Folk Cane

Mid 20th Century-A nicely carved wart hog tusk, small wood collar, painted oak shaft and a stopper ferrule-H. 7" x 1 3/4", O.L. 32 1/2" \$400-\$600



69.

66.

67.

68.

70.

71.

76.



72. Ivory Lion Cane

Ca. 1900-A carved ivory lion which can be seen chasing the tale end of someone, silver overlay handle, white metal collar, tropical wood shaft and a horn ferrule-H. 2" x 2", O.L. 35 1/2" \$500-\$800

73. Ivory Mallard Duck Cane

Mid 20th Century-A large carved ivory head, thick Malacca shaft and a 3" ivory ferrule-H. 2 1/2" x 3 1/2", O.L. 35 1/2" \$500-\$700

74. Silver Dress Cane

Early 20th Century-A large repose handle which is probably made by Kirk, thick ebony shaft and a horn ferrule-H. 2 1/4" x 2 1/2", O.L. 37" \$400-\$600

75. Ivory and Silver Clown Cane

Ca. 1930's-A laughing clown in sterling silver with an ivory hat and nose, hallmarked but unreadable, snakewood shaft and a metal ferrule-H. 2 1/4" x 1 1/2", O.L. 36" \$400-\$700

76. Ivory Buffalo Dress Cane

Early 20th Century-A well carved large ivory handle with two color glass eyes, broken Native American spear in its side, surely the dying ground for this animal, ornate metal collar ebony shaft and a bone ferrule-H. 4" x 2 1/4", O.L. 36" \$1,500-\$2,500

72.

75.

73.

74.

77. Nautical Ivory Carved Cane

Ca. 1870-A massive carved ivory fist and snake with fluted collar, spiral carved shaft collar, thick malacca shaft, coin silver eyelets and a 2" brass ferrule.

H. 1 5/8" x 1 5/8" x 3", O.L. 33"

\$1,500-\$2,500

78. Cinnabar Dress Cane

Ca. 1920-A fine Asian carving with no problems, silver metal collar, ebony shaft and a horn ferrule.

H. 4" x 3 3/4", O.L. 35 1/4"

\$500-\$700

79. Horse and Ivory Dress Cane

20th Century-A nice twin horse and pig ivory handle from the work shop of Charles Daugherty, signed sterling collar, ebony shaft and an ivory ferrule-H. 5 1/2" x 4", O.L. 36 1/2"

\$500-\$700

80. J. Haish Barb Wire Cane

Ca. 1900-There are many versions of this cane but this is the scalloped edge version, the medallion states "Compliments of J. Haish, S Barb Steel Fence wire, DeKalb, Ill.", fine condition with working barb "OUCH"-O.L. 34 1/2"

\$1,200-\$1,800

81. Albatross Nautical Beak Cane

Mid 19th Century-A simply marvelous example with brass fittings, inscribed "Capt. J. D. Paine", tropical fungal shaft and a metal ferrule-H. 6" x 2 1/2", O.L. 37"

\$1,000-\$2,000

77.



81.

78.



79.



80.



82.

82. Narwhal Nautical Cane

Ca. 1865-A signed sterling disc atop, Narwhal tusk shaft and a small brass ferrule-H. 1 1/2" x 5/8", O.L. 35 1/4", Dia. at top of shaft is 1 3/4", fine condition
\$3,500-\$5,000

83. Lalique Stopper Cane

Early 20th Century-A signed R. Lalique, France perfume bottle stopper which has been mounted, coin silver collar, thick Malacca shaft and a 3" horn ferrule
 H. 3" x 1 1/2", O.L. 34 3/4"
\$1,200-\$2,000

84. Full Ivory Dress Cane

Ca. 1875-Carved African elephant handle with various leafs and acorns, ornate Victorian gold filled collar, elephant ivory shaft and a brass ferrule, small chip on bottom side of the end cap.
 H. 4 1/2" x 1 3/4", O.L. 34"
\$800-\$1,200

85. Art Nouveau Sterling Dress Cane

Ca. 1890-A fine signed sterling cast handle of a bare breasted maiden with flowing hair, ebonized shaft and a metal ferrule
 H. 4 1/4" x 4", O.L. 37"
\$600-\$1,200

85.

86. Silver and Enamel Dress Cane

Ca. 1880-An unusual sample of the use of silver and enamel, hallmarked but unreadable silver collar, ebonized shaft and a brass ferrule-H. 3 ¾" x 2 ½", O.L. 35 ¼"
\$500-\$800

87.

87. Ivory Bear Cane

Ca. 1930-A carved walrus ivory creature with glass eyes, gold metal collar, later snakewood shaft and an ivory ferrule-H. 3 ¾" x 1 ¾", O.L. 36"
\$400-\$500

86.

88. Ivory Dog Cane

Early 20th Century-A carved ivory hound with two color glass eyes, carved ivory collar, beaded brass collar, ebonized shaft and ivory ferrule-H. 5 ½" x 2", O.L. 35 ½"
\$400-\$600

89. Rock Crystal and Silver Dress Cane

Ca. 1925-An ornate silver filigree placed upon affine specimen of rock crystal, snakewood shaft and a brass and metal ferrule.
H. 2 ¾" x 1 ¼", O.L. 36"
\$600-\$1,200

90.

90. Asian Silver Cane

Ca. 1890-A cast silver tiger with red eyes and bone teeth, unusual bent and formed dark malacca shaft and a horn ferrule-H. 4 ½" x 1 ¼", O.L. 36"
\$400-\$700

89.

91. Sterling Labrador Dress Cane

Ca. 1890-A wonderful Art Nouveau handle of this great retriever among the bull rushes, hallmarked but unreadable silver handle, mahogany shaft and a metal ferrule-H. 4 ¼" x 4", O.L. 36"
\$500-\$700

92. Damascene Dress Cane

Ca. 1910-An upscale handle with dragons, plants, birds and houses, handwork is very precise, small gold metal collar, ebonized shaft and a metal ferrule.
H. 4 ½" x 1 ¾", O.L. 34 ½"
\$600-\$1,000

91.

92.

94. 93.

95.

97.

99.

93. Ivory Dress Cane

Ca. 1850-Probably a going ashore ivory knob, coin silver collar and eyelets, malacca shaft and a 2 1/2" worn brass ferrule-H. 1 1/2" x 2", O.L. 32 1/4"
\$250-\$400

94. Asian Ivory Ape Cane

Ca. 1890-A master carving of an ape with two color glass eyes, bird and rat with glass eyes, frog perched behind the leafs in the cat tails, gold metal collar, cherry wood shaft and an ivory ferrule-H. 4" x 1 3/4", O.L. 36"
\$700-\$1,100

95. Ivory and Silver Dress Cane

Dated 1995-A spiral carved ivory handle with ornate sterling end caps, signed sterling and dated collar, interesting twig spur and fungal shaft, and a metal ferrule-H. 4 1/2" x 1 1/4", O.L. 35 1/2"
\$300-\$500

96. Hardstone Dress Cane

Ca. 1930-A finely carved and faceted three piece hardstone handle, gold metal separators, small faceted collar, mahogany shaft and a 2" horn ferrule-H. 1 3/8" x 2 1/4", O.L. 36"
\$500-\$600

97. Floating Turtle Cane

Early 20th Century-A nice example of this type of cane with the turtle completely intact, wooden handle, white metal collar, bamboo shaft and a brass ferrule-H. 1 1/2" x 2 3/4", O.L. 34 1/4"
\$300-\$600

98. Ivory Bull Dog Dress Cane

Late 19th Century-A carved ivory American handle, sterling silver collar with buckle, small malacca shaft and a brass ferrule-H. 3" x 4 1/4", O.L. 33 1/2"
\$300-\$500

99. Silver and Ivory Dress Cane

Ca. 1900-A silver handle which is bright cut with various decorations which is overlaid on the ivory, ebony shaft and a metal ferrule-H. 5" x 2 1/4", O.L. 36"
\$400-\$600

100. Wood/Bone Horse Cane

Late 19th Century-A carved burl horse with two color glass eyes and well appointed ears, carved bone handle extension, small brass ornate collar, malacca shaft and a metal ferrule.

H. 2 ¾" x 5 ¾", O.L. 36"

\$400-\$600

102.

101. Sterling Dress Cane

Ca. 1920- An ornate silver handle which is probably French with flowers, roses and cat tails, unreadable hallmark, snake wood shaft and missing a ferrule.

H. 4 ¼" x 3 ¼", O.L. 35"

\$300-\$500

100.

102. Continental Pocket Watch Cane

Late 19th Century-A coin silver working watch cane with a magnifier atop, stamped "1256m argent", hinged opening movement, hallmarked collar H.P., exotic wood shaft and a horn ferrule.

H. 1 ½" x 1 ½", O.L. 36 ½"

\$700-\$1,200

104.

103. Carved Horse Cane

Early 20th Century-A carved ebony horse with two color glass eyes, brass eyelets, twigspur shaft and a metal ferrule.

H. 3" x 2", O.L. 36"

\$250-\$350

101.

104. Tortoise/silver Dress Cane

Early 20th Century-A compressed tortoise handle with silver end cap, coin silver collar with British hallmarks, bamboo shaft and a brass ferrule.

H. 4" x 1 ½", O.L. 35"

\$400-\$700

105. Snakewood Crutch Cane

Ca. 1885-A full snakewood cane, silver plated ornate collar and a horn ferrule.

H. 4 ½" x 6", O.L. 35"

\$300-\$500

106. Gentleman's Tortoise Dress Cane

Ca. 1925-A compressed tortoise handle hallmarked 8 kt gold collar, probably French, honey malacca shaft and a metal and iron ferrule-H. 4" x 5", O.L. 36 ½"

\$400-\$700

103.

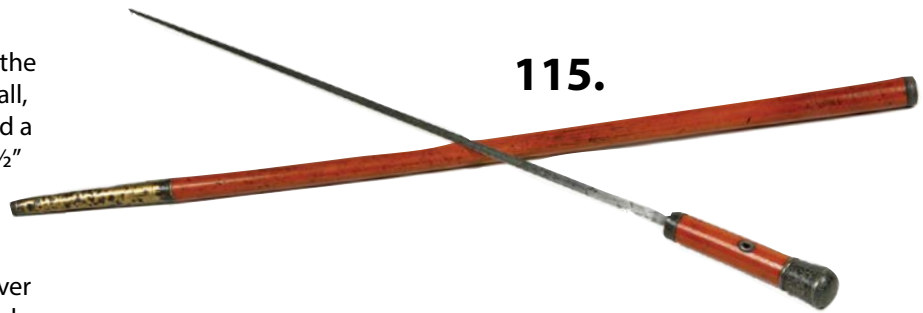
105.

106.

		<p>107. Sterling Elephant Cane Ca. 1935-A signed sterling handle with two color glass eyes, exotic wood shaft and a horn ferrule-H. 4 ½" x 4 ½", O.L. 37" \$500-\$600</p>
108.		<p>108. Gold Quartz Dress Cane Late 19th Century-A bright cut hallmarked 14 kt gold handle with a piece of gold quartz inserted as an end cap, ebony shaft and a gold filled ferrule-H. 4" x 3 ½", O.L. 36", Quartz 1" x 4/5" oval \$1,500-\$2,500</p>
	107.	<p>109. Chinese Ivory and Silver Dragon Cane Late 19th Century-A ver unique handle with red glass eyes, sterling mouth and teeth, sterling scales, inscribed "Robert Olyphant", malacca shaft and a worn original ferrule-H. 3 ¾" x 1 1/8", O.L. 36" \$500-\$700</p>
109.		<p>110. Silver Race Horse Cane Early 20th Century-A cast 800 silver handle which is signed "RLB" with two color glass eyes, ebony shaft and a metal ferrule-H. 4 ½" x 5", O.L. 33" \$400-\$600</p>
	111.	<p>111. Ivory Parrot Cane Ca. 1935-A carved ivory type of parrot with two color glass eyes, gold metal collar, ebony shaft and an ivory ferrule-H. 4 ¼" x 2", O.L. 36" \$500-\$600</p>
112.		<p>112. Sterling Dress Cane Late 19th Century-A casting of four identical gentlemen in silver, hallmarked but unreadable, hardwood shaft and a metal ferrule-H. 1 ½" x 1 7/8", O.L. 36" \$400-\$600</p>
110.		<p>113. Swan Dress Cane Ca. 1940-A gold metal swan with red glass eyes, exotic wood shaft and a horn ferrule-H. 2 ¼" x 3 ½", O.L. 37" \$100-\$150</p>
	113.	

114. Ivory Egyptian Cane

Ca. 1930-A carved ivory handle of the Sphinx looking upon a red glass ball, carved ivory collar, ebony shaft and a stag ferrule-H. 3 ¾" x 1 ½", O.L. 34 ½"
\$500-\$700



115. Sterling Sword Cane

Ca. 1790-An early hand worked silver handle with an unreadable hallmark, coin silver eyelets, 25" three sided blade which is engraved "Charles Velewberg New York", coin silver spacers, push and lock blade, original malacca shaft and a 5 ½" original brass ferrule-H. 1 ¼" x 5 ½", O.L. 35"
\$1,500-\$2,000

116. Hardstone Dress Cane

Ca. 1935-A green hard stone probably some type of jade, decorated silver metal collar, ebony shaft and a horn ferrule-H. 3" x ¾", O.L. 35 ½"
\$300-\$500

117.

117. Ivory Jewelry Cane

Ca. 1900-A pommel handle with turquoise and what appear to be garnets in gold sets attached to the top, six piece segmented elephant ivory cane and no ferrule.
H. 1 ¼" x 2 ¼", O.L. 36"
\$700-\$1,200

114.

118. Asian Ivory Dress Cane

Ca. 1890-A nice 1,000 face ivory handle which is signed in Japanese characters, white metal collar, ebony shaft which has a snake that is carved as if it was crawling inside and a metal ferrule-H. 4 ¼" x 1 ¼", O.L. 34 ½"
\$600-\$800



118.

119. Male Urinating Church Cane

20th Century-This unique system stick was made by Uncle Marion Cuncell and was a favorite to Mr. Barth, By opening the troth a male can slip behind the tree and refrain from wetting his shoes.-O.L. 39", Troth 10"
\$300-\$500

119.

116.

122.



121.

120.



123.

124.

125.

120. Russian Enamel Dress Cane

Ca. 1930-A nice example of Russian enamel and silver work, Malacca shaft and a worn ferrule.

H. 1 1/2" x 1 1/4", O.L. 34"

\$400-\$700

121. Silver and Ivory Dress Cane

Ca. 1885-A sterling and ivory handle, ornate silver collar, probably an umbrella shaft and a metal ferrule-H. 5" x 2 3/4", O.L. 36"

\$200-\$300

122. Countryside Flick Stick

19th Century-A nice early example with a hand engraved trap door for the 6 1/4" blade with its original locking mechanism, twigspr shaft and a brass ferrule-O.L. 36"

\$800-\$1,000

123. Ivory and Silver Dress Cane

Ca. 1890-A well carved ivory handle with a beaded overlay of silver, engraved silver collar "Colonel E. F. Gosset", thick ebony shaft and a horn ferrule.

H. 4 1/2" x 1 1/2", O.L. 35 1/2"

\$400-\$500

124. Horn and Silver Court Cane

Ca. 1810-A horn handle with an ivory disc atop, very ornate cast silver collar, matching ornate silver eyelets with hinge lanyard support, malacca shaft and a 5" iron pike ferrule-H. 4 1/2" x 1 1/4", O.L. 35"

\$800-\$1,200

125. Howell Ivory Bull Dog Cane

Early 20th Century-A carved ivory dog with two color glass eyes, malacca shaft with a Howell cartouche attached and a horn ferrule-H. 2" x 2", O.L. 34 1/2"

\$500-\$700

126. Ivory Dog Cane

Ca. 1925-An Art Deco ivory carving with two color glass eyes and open mouth, ribbed silver collar, malacca shaft and a metal ferrule.

H. 4 1/4" x 1 1/2", O.L. 34 1/2"

\$600-\$900

127. Ivory Child Country Cane

Late 19th Century-A natural burl handle with a carved ivory child attached, white metal collar, snakewood lower shaft and a metal ferrule-O.L. 36"
\$400-\$700

128. Cheroot Sterling Golf Cane

Early 20th Century-A signed sterling compartment cane which has the appearance of a golf club, stepped hardwood shaft and a metal ferrule-H. 4" x 3", O.L. 35 1/2"
\$400-\$600

129. Rose Quartz Dress Cane

Ca. 1930-An interesting quartz handle with various rock crystal cabochons which all have miniature plants and animals within, gold filled collar, rosewood shaft and a metal ferrule-H. 3 1/2" x 1 1/8", O.L. 36"
\$500-\$700

130. Silver Parrot Cane

Early 20th Century-A silver-plated parrot with two color glass eyes, ebonized shaft and a horn ferrule. H. 2 1/2" x 1 1/2", O.L. 33"
\$100-\$200

131. Chimpanzee Day Cane

Ca. 1920-Inlaid silver geometric handle, a well sculptured ape probably in silver grasping the shaft which has had an early substantial repair, malacca shaft and a metal ferrule-O.L. 35"
\$300-\$400

132. Jeweled Hardstone Dress Cane

Ca. 1930-A hardstone carved handle which is probably a type of jade, inlaid large cabochon probably garnet atop, 36 stones inserted into the handle, red enamel collar with minor damage, ebony shaft and a horn ferrule-H. 1 1/2" x 2 1/4", O.L. 38 1/2"
\$1,000-\$1,500

128.

127.

130.

132.

129.

131.





137.

135.

134.



133.

133. Staghorn Creature Cane

Mid 20th Century-A carved antler with two color glass eyes, ornate silver metal collar, thick bamboo shaft and a stag ferrule.

H. 3" x 1 1/4", O.L. 38"

\$300-\$500

134. Sterling Crab Cane

Ca. 1890-A precisely cast handle with a large crab and other nautical items signed sterling and R.F.S., Malacca shaft and a metal ferrule.

H. 1 3/8" x 2 1/4", O.L. 35 1/2"

\$400-\$600

135. Ivory Elephant Cane

Dated 1913-An unusual ivory carving of a squatting elephant, English coin silver collar, hallmarked ACJ, mahogany shaft and a metal ferrule-H. 1 1/2" x 1 3/8", O.L. 36 1/2"

\$400-\$700

136.

136. Asian Dress Cane

Early 20th Century-A cast silver handle, large bamboo shaft carved with snakes and frogs, and a brass and stag ferrule.

H. 1 1/2" x 2", O.L. 35 1/2"

\$300-\$500

138.

137. Remington Gun Cane

Late 19th -An original Remington shotgun cane which is needing some repair to cracks in the handle, working and good stopper ferrule.

H. 3 1/2" x 2 1/2", O.L. 36"

\$3,000-\$5,000

138. Hard Stone Dress Cane

Ca. 1935-A nice probably lapis handle, silver metal collar, ebony shaft and a horn ferrule.

H. 1" x 2 3/4", O.L. 37"

\$350-\$500

139. Ivory Dress Cane

Ca. 1890-An unusual carved ivory handle ornate silver collar, ebony shaft and a horn ferrule.

H. 1 ¼" x 5 ¼", O.L. 39 ½"

\$300-\$500

140.

140. Tepliz Ivory Dog Cane

Ca. 1900-Overlaid silver dog with two color glass eyes and an ivory snout, Malacca shaft and a horn ferrule-H. 6" x 3 ½", O.L. 36"

\$500-\$700

141. Art Deco Silver Dress Cane

Ca. 1920-A well formed silver handle which is marked 800 silver and what appears to be a Swedish Hallmark, small gold collar, rich snakewood shaft and a horn ferrule-H. 4" x 4 ½", O.L. 37"

\$400-\$600

139.

141.

142. Alligator Folk Cane

Ca. 1930-A sleeping gator probably carved by the Jacksonville School, brass collar, orange wood shaft and a metal ferrule.

H. 4 ½" x 2", O.L. 35 ¼"

\$300-\$500

142.

143. Compartment Amethyst Dress Cane

Late 19th Century-A cast silver ball with locking mechanism and probably an amethyst atop, the attached collar has a large swallow and is hallmarked with the initials RC and the number 84, ebonized shaft and a metal ferrule.

H. 1 ¾" x 3", O.L. 36 ½"

\$500-\$600

145.

144. Stag and Silver Dress Cane

Ca. 1890-A blend of original stag and silver overlay, signed sterling collar, mahogany shaft and a metal ferrule-H. 4 ¾" x 2", O.L. 37"

\$400-\$600

144.

145. Horn and Silver Dress Cane

Ca. 1900-A carved horn with silver attachments, ornate silver collar, ebony shaft and a horn ferrule.

H. 4 ¼" x 1 ¾", O.L. 35"

\$400-\$600

143.

149.

146.

146. Tiffany 18kt Dress Cane

Early 20th Century-A signed "Tiffany & Co. 8944 Maker's 6727 18 kt gold M", thick ebony shaft and a horn ferrule-H. 1 1/4" x 1 1/4", O.L. 36"
\$1,000-\$2,000

147. Frog Match Safe Cane

20th Century-A sculpted frog with a hinged head and a striking surface on its back, metal collar, ebony shaft and a horn ferrule-H. 1 1/2" x 2 1/4", O.L. 35 3/4"
\$500-\$800

148. Silver and Gold Dress Cane

Ca. 1875-An early cast silver handle with gold work applied and atop, probably Spanish, malacca shaft and a horn ferrule-H. 1" x 1 3/8", O.L. 33 3/4"
\$500-\$600

149. Barometer Segmented System Cane

Late 19th Century-A precise instrument with porcelain dial and silver case, sterling silver collar, Malacca shaft in four segments which could be packed for traveling and a horn ferrule-H. 2" x 1 1/2", O.L. 31"
\$1,200-\$1,800

150.

150. Asian Sword Cane

Ca. 1910-A quality bamboo sword cane with a locking 4-sided 25 3/4" blade, push button working mechanism, attached bronze primate, stepped bamboo shaft and a metal ferrule-H. 5 1/4" x 1 3/8", O.L. 34"
\$500-\$800

152.

151.

151. Wales's Tooth Nautical Cane

Ca. 1900-A carved pommel handle with brass rivets, ornate ebony carved spiral shaft and a metal ferrule.
H. 1 1/2" x 2", O.L. 34 3/4"
\$400-\$600

147.

152. Bull Dog System Cane

Ca. 1925-A carved bull dog with glass eyes and ivory ears, push button lower jaw which was used to be a glove holder, small ivory collar, maple shaft with horn eyelets and a horn ferrule-H. 2" x 3", O.L. 36"
\$500-\$700

148.

153. Tout Silver System Stick

Ca. 1885-A sterling silver handle which contains a sterling and metal pencil holder primarily used by gentlemen at the race track, pencil is spring loaded in the handle and released by pulling the jump ring, malacca shaft and a metal ferrule. H. 1 ½" x 1 ¾", O.L. 34"

\$600-\$900

153.

154. Physicians Pomander Cane

Ca. 1880-A unique handle which has a hinged lid atop, which contain smelling salts, silver plated handle and collar, thick ebony shaft and a metal ferrule-H. 1 ¼" x 1 ¾", O.L. 35"

\$500-\$700

154.

155. Carved Bird Cane

Early 20th Century-A briar carved bird with two color glass eyes which is eating upon a salmon, ornate gold filled collar, nice ebony shaft and a horn ferrule-H. 4" x 1 ¾" x 3", O.L. 36 ½"

\$500-\$700

155.

156. Royal Dress Cane

Late 19th Century-A mixed metal ornate cast handle with a lion with red eyes atop, ebony shaft and a metal ferrule-H. 3 ½" x 1", O.L. 35 ½"

\$500-\$700 (probably a gold overlay)

156.

157. Lion Carved Cane

Ca. 1900-A German carved smiling lion lying among the burl, twigspur and root shaft and a metal ferrule. H. 2 ¼" x 6"-O.L. 34 ½"

\$300-\$400

157.

158. Silver Dress Cane

Ca. 1860-A high relief silver handle, thick Malacca shaft and a horn ferrule-H. 1 ¼" x 1 ½", O.L. 35 ¾"

\$250-\$350

158.

159. Moose Antler Cane

Ca. 1930-A carved moose probably from a moose antler with beaded glass eyes, gun metal and gold collar, mahogany shaft and a horn ferrule. H. 5 ¼" x 2 ½", O.L. 36"

\$300-\$500

159.

160.

160. Ivory Rabbit Country Cane

Ca. 1920-A carved ivory rabbit with glass eyes and a small broken foot, burrow wood natural shaft and a metal ferrule (rabbit is 2 ¼")-O.L. 35 ¾"
\$300-\$500

161.

161. French Ivory and Silver Cane

Ca. 1890-A carved ivory child in a French military hat, ornate silver handle, small silver collar, rich snakewood shaft and a metal ferrule-H. 4" x 2 ¾", O.L. 35"
\$500-\$700

162.

163.



162. Tiffany Sterling Dress Cane

Ca. 1900-An Art Nouveau handle which is signed "Tiffany & Co. Maker Sterling C", large honey Malacca shaft and a horn ferrule-H. 4" x 2", O.L. 36"
\$700-\$1,000

163. Abalone and Silver Dress Cane

Late 19th Century-A signed "F.C. & Co. Sterling" handle, small hardwood shaft and a brass ferrule.
H. 1 1/8" x 3 ¾", O.L. 35"
\$400-\$600

164. Gold Filled Dress Cane

Ca. 1900-An ornate and inscribed gold filled handle, ebony shaft and a metal ferrule-H. ¾" x 1", O.L. 35"
\$200-\$300

165. Bull Dog Dress Cane

Late 20th Century-A sterling cast bull dog with glass eyes and hallmarked from the shop of Charles Daugherty, ebony shaft and a metal ferrule.
H. 1 ¾" x 3 ½", O.L. 36"
\$500-\$600

166. Gutta Percha Dress Cane

Ca. 1890-A full Gutta Percha cane with a 3" metal ferrule-H. 1 ¼" x 2", O.L. 36"
\$200-\$300

164.

165.

166.

167. Tiffany Nast Eagle Cane

Ca. 1900-A fine example which is signed "Tiffany & Co. M Sterling", nice ebony shaft and a bi-metal ferrule.

H. 3" x 1 3/4", O.L. 35 1/2"

\$3,000-\$5,000



168. Asian Silver Dress Cane

Ca. 1915-A cast Asian handle with various animals, people and trees, carved upper shaft, silver belt buckle collar, thick ebony shaft with lower end carved and a metal ferrule.

H. 1 1/2" x 2 1/2", O.L. 35 1/2"

\$400-\$500

169.

169. Pigeon Blood and Silver Dress Cane

Ca. 1900-An ornate silver overlaid pigeon blood glass handle, handle can be removed for safe keeping, ebonized shaft and a metal ferrule.

H. 4" x 1", O.L. 37"

\$500-\$800

168.

170. Telescope Cane

Mid 20th Century-A one draw brass telescope handle in working condition, spear brass collar, oak shaft and a brass ferrule.

H. 3 1/4" x 1 1/2", O.L. 37"

\$250-\$350

170.

171. Pocket Watch System Cane

20th Century-A modern railway regulator pocket watch in a white metal holder, ebonized shaft and a stag ferrule-H. 2 1/2" x 1 1/4", O.L. 35 3/4"

\$100-\$200

171.

172. Gambler's/Craps System Cane

Ca. 1935-A compartment cane which holds 3 dice on a felt lined support, ivory and silver handle, silver metal collar, H.C&S with British hallmarks, ebonized shaft and a horn ferrule.

H. 1 3/4" x 2", O.L. 35 3/4"

\$500-\$700

172.

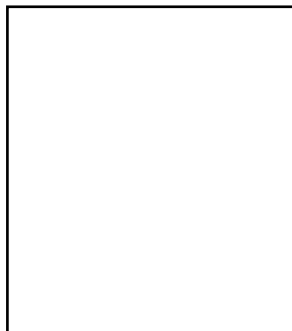


173.

175.

174.

176.



173. Gun Cane

Ca. 1885-A prime example of an early shotgun cane by E.L.G., breach is signed also has 12 MC, no. 104 and maker's mark, entire cane except for the drop trigger collar is covered in leather, plunger ferrule and is in working condition-H. 4" x 4", O.L. 36 1/2" \$1,500-\$2,200

174. Bone Dress Cane

Ca. 1885-A carved bone two piece handle, missing an end cap, small brass collar with flowers, Malacca shaft and a horn ferrule. H. 3 1/2" x 4 1/2", O.L. 35" \$200-\$250

175. Egyptian Ivory Cane

Ca. 1925-A nicely carved figure with painted eyes, small ivory collar, ebony shaft and a horn ferrule. H. 3" x 1 1/4", O.L. 36" \$300-\$500

176. Silver and Ivory Dress Cane

Ca. 1875-A carved ivory handle with an ornate sterling end cap with minor dents, signed sterling ornate collar, natural branch shaft and a metal ferrule-H. 4 1/4" x 1 1/2", O.L. 35 1/2" \$300-\$500

177. Ivory Dress Cane

Ca. 1900-A large handle with a well carved wolf character, ornate filigree end cap collar, high relief carving on end cap, large ivory upper shaft, ornate silver collar, Malacca shaft and a bone ferrule-H. 6" x 1 5/8", O.L. 33" \$500-\$800

178. Asian Ivory Cane

Ca. 1890-A unique Pierce carved Chinese handle, ornate silver collar, ebonized shaft and an ivory ferrule. H. 2 3/4" x 6", O.L. 39" \$500-\$800

179. Flute System Cane

Early 20th Century-A 5 segmented flute cane with nickel silver collars and keys, rosewood shaft and a metal ferrule-O.L. 36"
\$700-\$900

180. Tippler's Cane

Ca. 1935-A nice tippler's stick with average wear, glass tube and cork, faux bamboo hardwood shaft and a metal ferrule-H. 5" x 6", O.L. 36"
\$300-\$500

181. Taylor's Measuring Cane

Early 20th Century- Alter-Meter tailor's measuring cane made in Columbia Missouri, original decal and working condition, large malacca shaft and a stopper ferrule-O.L. 38"
\$400-\$700

182. Shell Dress Cane

Ca. 1930-A composition handle, signed sterling collar, malacca shaft and a horn ferrule.
 H. 4 1/2" x 3 1/2", O.L. 35 3/4"
\$250-\$350

183. Egyptian Style Dress Cane

Ca. 1925-An unusual mixed metal handle with Egyptian motifs, small gold collar, hardwood shaft and a metal ferrule-H. 1 3/4" x 8", O.L. 36"
\$400-\$600

184. Silver and Ivory Asian Cane

Ca. 1890-A carved ivory animal with two color glass eyes and a precisely cast silver handle with a large snake and flowers, snakewood shaft and a horn ferrule-H. 4 1/2" x 3", O.L. 35 3/4"
\$600-\$900

185. Art Nouveau Dress Cane

Ca. 1890-An ornate silver end cap with what appears to be German hallmarks, stepped partridge wood shaft and a metal ferrule.
 H. 5" x 3 1/2", O.L. 37"
\$250-\$400

**179.****181.****182.****184.****183.****180.****185.**

186. Silver Snipe Cane

Ca. 1900-A detailed casting with glass eyes, golden oak shaft and a horn ferrule-H. 3 ¼" x 2", O.L. 36"
\$350-\$500

187. Pencil System Cane

Late 19th Century-An unusual cane which holds a mechanical pencil, carved cherries attached, cherry wood handle and shaft and a small ferrule-O.L. 28"
\$300-\$500

188. Umbrella System Cane

Ca. 1930-A bamboo telescoping shaft which holds a fine umbrella-O.L. 36"
\$300-\$400

189. Carnelian Dress Cane

Ca. 1885-A silver handle with a 1" carnelian stone atop, hammered silver handle, worn oak shaft and a metal ferrule-H. 1 ¾" x 2 ¼", O.L. 34"
\$500-\$700

190. Nautical Whalebone Cane

Ca. 1880-A whalebone cane with some scrimshaw work on its top, whalebone shaft and no ferrule.
H. 1 1/8" x 1 ½", O.L. 33 ½"
\$500-\$700

191. Dog Trainers Cane

Late 19th Century-An American carved dog with two color glass eyes, signed sterling collar, malacca weighted shaft and a brass ferrule which doubles as a mechanism which lets a dog run in circles without tangling.
H. 5" x 1 7/8", O.L. 37"
\$1,000-\$1,500

192. Hidden Flask Cane

Ca. 1930-A Tippler's stick which has both glass flask and a glass hidden within the shaft and handle, unscrewing brass top and a metal ferrule-H. 1 ¼" x 1", O.L. 35"
\$300-\$400



193. Ivory Bull Dog Cane

Ca. 1930-A carved ivory bull dog, white metal collar, American oak shaft and a metal ferrule-H. 2" x 2", O.L. 35 ¾"
\$400-\$600

194.

194. Ivory Snake Cane

Ca. 1885-A carved ivory handle with an entwined snake, signed sterling collar, exotic wood shaft and an ivory ferrule.
H. 4 ¾" x 1 ½", O.L. 36"
\$500-\$600

195. Classical Ivory Cane

Ca. 1860-A fine carved ivory handle with various animals and children, hallmarked sterling collar, Malacca shaft and a metal ferrule-H. 3 ½" x 4 ¾", O.L. 34"
\$700-\$1,200

196. Magnifying Glass Cane

Mid 20th Century-A silver-plated handle with about an 8 hour loop, mahogany shaft and a metal ferrule.
H. 1 ½" x 2 ½", O.L. 36"
\$300-\$500

197. Neillo Dress Cane

Late 19th Century-A nice example of this work, probably Scandinavian, numbered 1811n, exotic wood shaft and a metal ferrule-H. 3 ¾" x 1 ¾", O.L. 35"
\$500-\$600

198. English Sword Cane

Late 19th Century-A natural branch handle and shaft, 28" four sided acid etched blade with locking mechanism and a metal ferrule.
H. 4 ¾" x 6 ½", O.L. 35 ½"
\$500-\$800



195.

198.

193.

197.

196.

200.

199.

202.

204.

201.

199. Comical Ivory Cane

Late 19th Century-A carved ivory handle where the four gentlemen share eyes, each face represents a different expression, signed but unreadable collar with minor damage, malacca shaft and a metal ferrule.

H. 1 $\frac{3}{4}$ " x 2", O.L. 33 $\frac{1}{2}$ "

\$500-\$700

200. Rose Gold Bull Dog Cane

Dated 1901-A low karat gold bull dog with rose cut diamond eyes, muzzled face and jaw, ebony shaft and a bi-metal ferrule. H. 1 $\frac{1}{4}$ " x 1 $\frac{1}{2}$ ", O.L. 35 $\frac{3}{4}$ "

\$500-\$700

201. Asian Silver Dress Cane

Ca. 1935-A cast silver handle with various plants and medallions, $\frac{1}{2}$ carved ebony shaft and a brass ferrule.

H. 1 $\frac{3}{4}$ " x 2 $\frac{1}{4}$ ", O.L. 34 $\frac{1}{2}$ "

\$400-\$500

202. Silver Bull Dog Cane

Ca. 1995-A cast sterling handle from the work shop of Charles Daugherty, hallmarked and signed sterling collar, ebony shaft and a metal ferrule.

H. 4 $\frac{1}{2}$ " x 2 $\frac{1}{2}$ ", O.L. 34"

\$500-\$600

203. Nautical Ivory Cane

Ca. 1850-A carved whale's tooth handle with a coin silver medallion atop, coin silver collar and eyelets, malacca shaft and an original 3 $\frac{1}{2}$ " brass ferrule.

H. 1 $\frac{1}{2}$ " x 2", O.L. 34"

\$400-\$600

204. Golf Sunday Cane

Late 19th Century-A small driving wood with bone inlay and celluloid, small bone collar, hardwood shaft and a metal ferrule-H. 3" x 3 $\frac{3}{4}$ ", O.L. 36"

\$500-\$700

203.

205. Racehorse Folk Cane

Ca. 1900-A quality museum carving in wood of two racehorses with glass eyes and silver bridals, signed and engraved silver collar, malacca shaft and a metal ferrule.

H. 4" x 1 5/8", O.L. 34"

\$800-\$1,200

205.**206. Nast Silver Eagle Cane**

Ca. 1900-A nice example of this style of eagle with two color glass eyes, stamped 800 silver with unreadable German hallmarks, exotic wood shaft and a metal ferrule.

H. 3 3/4" x 2 1/2", O.L. 33 3/4"

\$500-\$1,000

206.**207. Ivory Lion Cane**

Early 20th Century-A walrus ivory carving of a lion with two color glass eyes, Malacca shaft and a horn ferrule-H. 3 3/4" x 1 7/8", O.L. 35"

\$600-\$900

208. \$1.00 Gold Coin Tiffany Cane

Late 19th Century-A signed 18 kt "Tiffany & Co. 118" handle, atop the handle is an 1879 \$1.00 U.S. gold coin in fine condition, large Malacca shaft and a horn ferrule.

H. 1 1/4" x 1/2", O.L. 34 3/4"

\$1,000-\$2,000

**208.****209. Anti-Semitic Stag Cane**

Ca. 1940-A carved stag handle which is probably German, glass eyes, horn and ivory shirt handle, horn collar, exotic wood shaft and a stag ferrule-H. 3 1/2" x 5", O.L. 36 1/2"

\$400-\$600

209.



212.

210. After Faberge Rabbit Cane
20th Century-Wonderful silver rabbit with glass eyes and enamel collar, signed with the correct Faberge marks, handle unscrews from the rich snakewood shaft and it has a brass ferrule. This is a quality after market cane and is a world class copy. H. 2 3/4" x 3 3/4", O.L. 36" \$2,000-\$3,000

211. Sterling and Gold Dress Cane
Ca. 1885-An ornate sterling handle with rose gold initials atop, silver eyelets, exotic wood shaft and a brass ferrule-H. 1 3/4" x 2", O.L. 34" \$400-\$600



210.

212. Campaign Stool Cane
Late 19th Century-A nickel silver handle and large container collar which hold a canvas shooting or parade seat, oak shaft and a metal ferrule-H. 1 1/2" x 8 1/2", O.L. 34 3/4" \$300-\$500

213. Sand Nicolas Silver Cane
Dated 1910-A silver presentation cane from Santo Domingo, nice sterling handle, hardwood shaft and missing ferrule.
H. 1 3/4" x 1 3/4", O.L., 35 1/2" \$300-\$500

214. Walrus Walrus Ivory Cane
Early 20th Century-A double-double ivory cane, ornate beaded silver collar, ebony shaft and a horn ferrule-H. 4" x 1 1/2", O.L. 36" \$500-\$800

211.



213.

214.

215. Horn Dress Cane

Ca. 1900-A horn handle which could be rhino, unsigned small gold collar, inlaid gold initials M K. on the malacca shaft and a horn ferrule.

H. 1 ¼" x 1 5/8", O.L. 33 ¾"

\$300-\$500

215.**216. Lyon Silver Dress Cane**

Early 20th Century-A signed sterling handle with gold eyes, engraved Lyon maker sterling, Boston presentation, malacca shaft and a metal ferrule.

H. 1 1/8" x 1 7/8", O.L. 34 ½"

\$400-\$500

217. Russian Dress Cane

Ca. 1935-A signed bell bronze crook handle, exotic wood shaft and a bronze ferrule-H. 3 ¾" x 4", O.L. 34 ¾"

\$200-\$300

218. Pocket Watch Cane

Late 19th Century-A British coin silver key wind watch with a hand painted porcelain dial, coin silver handle removes from handle to expose a hidden compartment which holds the key, thick snakewood shaft and a horn ferrule-H. 2" x 2 ¼", O.L. 35 ¼"

\$900-\$1,200

216.**217.****219. Silver Dress Cane**

Ca. 1900-A textured signed sterling handle, malacca shaft and a metal ferrule-H. 1 ½" x 1", O.L. 34 ½"

\$200-\$300

219.**218.**



221.



222.

220.

220. Bakelite Flashlight Cane

Ca. 1930-A butterscotch Bakelite handle, battery compartment in malacca shaft, signed Austrian handle, white metal collar and a metal ferrule-H. 1" x 1", O.L. 35"

\$400-\$500

221. Sextant Style System Cane

Ca. 1880-A 900 silver Asian style handle, a compartment cane which holds a sextant wood and brass style of instrument, original leather lanyard, thick malacca shaft and a metal ferrule-H. 3 1/2" x 1 1/2", O.L. 33 1/2"

\$800-\$1,500

222. Harrison Device System Cane

Late 19th Century-Large coin silver handle, compartment cane, holding a brass device with the name Harrison Sovereign Warranted, thick malacca shaft and a horn ferrule.

H. 1 3/4" x 3", O.L. 36"

\$500-\$700

223. Root Folk Cane

Ca. 1890-A carved one piece branch and root staff with a Biblical looking person and a metal ferrule-O.L. 36"

\$200-\$350

224. Anti-Semitic Folk Cane

Early 20th Century-A carved stag handle with two color glass eyes, large coin silver collar, thick Malacca shaft and a metal ferrule.

H. 6" x 5", O.L. 36"

\$500-\$600

223.

224.

225. Frog/Whalebone Cane

20th Century-A mid century cast bronze frog, hexagonal whalebone shaft and no ferrule.

H. 3 ¼" x 6", O.L. 34 ½"

\$800-\$1,200

225.



226. Amber Dress Cane

Ca. 1920-An amber colored substance with a small crystal eye atop, ornate silver collar, exotic wood shaft and a metal ferrule-H. 1 ½" x 2 ½", O.L. 36"

\$250-\$350

227. Horse Measuring Cane

Late 19th Century-Carved stag handle, brass horizontal rule, wooden rule marked both in feet and hands, brass collar, Malacca shaft and a 5 ½" brass ferrule-H. 4" x 2", O.L. 34 ½"

\$700-\$1,000

227.



228. Globe System Cane

Ca. 1975-A contemporary example of an ivory navigating cane, compass is missing needle, brass collar, mahogany shaft and a horn ferrule.

H. 2" x 2", O.L. 34 ½"

\$200-\$300

229.

229. Gold-Filled Dress Cane

Dated 1888-A presentation from "The Merrihcu, Union Security", also appears to have an engraved eyeball, ebonized shaft and a metal ferrule.

H. 1 ½" x 2 ½", O.L. 35"

\$300-\$500

226.

230. Asian Decorative Cane

Ca. 1890-An unusual burl handle with mixed metal and inlaid attachments both in gold and silver, grapes, bees and birds, small white metal collar, ebony shaft and a copper ferrule.

H. 1 ½" x 2 ¼", O.L. 35 ¾"

\$500-\$700

228.

230.

234.

231. Asian Amethyst Cane

Ca. 1930-A carved amethyst, ribbed white metal collar, ebony shaft and a metal ferrule-H. 1 ½" x 2", O.L. 35"
\$400-\$700

232. Howell Dress Cane

Early 20th Century-A signed Howell cane with a gold end cap and attachments, nice malacca shaft and a horn ferrule-H. 5 ¼" x 4", O.L. 36"
\$400-\$700

233.

233. Stag Dress Cane

Ca. 1885-A stag dress cane with a silver thumb rest, signed sterling collar, exotic wood shaft and a metal ferrule-H. 5" x 1 1/8", O.L. 34 ½"
\$200-\$300

231.

234. Porcelain Dress Cane

Ca. 1890-A highly decorated cobalt porcelain handle with a little boy with a bird in hand, heavy gold decoration, gold metal collar, ebony shaft and horn ferrule-H. 1 ¾" x 3", O.L. 37 ½"
\$600-\$900

235. After Faberge Dress Cane

20th Century-A wonderful expertly made after market Faberge handle of a gorilla carved of cornelian, rubies, pearls and rose cut diamonds, gold dore drapes and flowers, handle unscrews from the massive snakewood shaft and has hallmarks of the Russian master. This handle was made by a master's hand from the cobalt blue enamel to the signature to duplicate the work of this Russian workshop.

H. 2 ¼" x 2" x 3 ¼", O.L. 36 ½"
\$2,500-\$3,500



235.

232.

236. Push-up Candle Stick Cane

Ca. 1880-A nice example of this genre with a hinge top and push-button mechanism, faux snake wood shaft and a metal ferrule.

H. 1 ¼" x 4", O.L. 34 ½"

\$500-\$900

236.

237. Ivory Dress Cane

Ca. 1925-A nice evening cane with a small chip on the back side, white metal collar, ebony shaft and a metal ferrule-H. 1 3/8" x 1 7/8", O.L. 32 ¼"

\$200-\$300

237.

238. Porcelain Dress Cane

Late 19th Century-A fine porcelain handle, probably German, small gold metal collar, malacca shaft and a horn ferrule-H. 1 ¼" x 1 ¾", O.L. 37"

\$400-\$600

239. Asian Dress Cane

Ca. 1935-A silver colored handle with various animals and people and vegetation, ebony shaft and a horn ferrule-H. 4 ¼" x 3 ½", O.L. 38"

\$150-\$250

238.

240. Sterling Bull Dog Cane

Ca. 1910-A signed sterling bull dog with red glass eyes, honey malacca shaft and a horn ferrule.

H. 1 ¼" x 1 1/8", O.L. 35"

\$400-\$500

239.

241. Silver Defensive Cane

Early 20th Century-Silver plated talon with two red stones which are faceted, signed in oriental characters, thick ebony shaft and a bi-metal ferrule-H. 4 ½" x 2 ¼", O.L. 35 ¾"

\$400-\$700

241.

240.

242.

242. Kepkypa Carved Cane

Early 20th Century-A carved handle with various human and primate faces from the Ionian Sea Greek Island, hardwood shaft and a metal ferrule. H. 1 3/4" x 2 1/2", O.L. 36"
\$300-\$400

243. Ivory Hound Hunting Cane

Ca. 1885-A carved ivory handle with three hounds chasing a rabbit, ornate silver collar, exotic wood shaft and a metal ferrule. H. 5" x 1 3/4", O.L. 34 3/4"
\$400-\$700

244. Bone Physician's Pomander Cane

Ca. 1860-A physician's cane which has tortoise shell inlaid atop beside the scent holes, long bone collar with geometric inked figures, wrapped flexible shaft and a 2" brass ferrule. H. 1 1/2" x 3 1/4", O.L. 35 3/4"
\$500-\$700

243.

245. Bull Penis Cane

20th Century-Dried bull penis shaped in the form of a crook handle cane and a small metal collar-O.L. 34"
\$300-\$500

246. Enameled Dress Cane

Ca. 1900-An enamel dress handle with a large jade stone atop, hallmarked probably French 900 silver collar, ebony shaft and a metal ferrule-H. 1 3/8" x 3", O.L. 36"
\$700-\$1,000

244.

246.



245.

247. Alligator Folk Cane

Ca. 1930-A large carved polychrome gator, Jacksonville School, orange wood handle and thick orange wood shaft and no ferrule.

H. 6" x 3", O.L. 35 ¾"

\$400-\$500

248. Bird/Folk Cane

Ca. 1900-A carved burl root with an exotic fowl, attached silver metal snake and a bi-metal ferrule-O.L. 35"

\$300-\$500

249. Spaniel Dress Cane

Ca. 1920-A high relief signed sterling handle with a portrait of a dog, exotic wood shaft and a bi-metal ferrule-H. 1 ¼" x 2 ¼", O.L. 33 ½"

\$250-\$400

250. Asian Ivory Day Cane

Early 20th Century-A carved ivory face, exotic wood spacer, ivory collar, exotic wood shaft and an ivory ferrule-H. 2 ¼" x 4 ½", O.L. 33"

\$400-\$600

251. Agate and Silver Dress Cane

Late 19th Century-A round agate which is overlaid with silver filigree work, unsigned silver collar, malacca shaft and a 2" horn ferrule.

H. 1 ½" x 1 ½", O.L. 34 ½"

\$400-\$600

252. Viennese Folk Cane

Ca. 1880-A carved burl with minor damage to the underside of hat, nicely detailed and a metal ferrule-O.L. 34"

\$200-\$300

247.

249.

248.

252.

251.

250.

253.

253. Ivory Horse Cane

Ca. 1900-A carved ivory horse head with glass eyes and hoof, silver collar, ebony shaft and a bone ferrule.

H. 4" x 2", O.L. 35"

\$500-\$600

254.

254. Gold Pencil Cane

Early 20th Century-A signed 14 kt spring loaded mechanical pencil mechanism, signed but unreadable, by pushing the gold button the pencil pops out, bamboo shaft and a metal ferrule.

H. 5" x 3 1/2" x O.L. 36"

\$500-\$1,000

255. Key Wind Pocket Watch Cane

Mid 19th Century-A signed London dial which is key wind and set, bell bronze ornate watch case with locking mechanism, white metal collar, ebony shaft and a bone ferrule.

H. 2" x 1 1/2", O.L. 35 1/2"

\$500-\$1,000

256. Silver Dress Cane

Ca. 1870-A nice engraved silver handle with British hallmarks, small silver collar, malacca shaft and a metal ferrule.

H. 1 1/2" x 2", O.L. 35"

\$400-\$600

257. Tiffany Silver Dress Cane

Ca. 1900-An ornate sterling handle, signed "Tiffany & Co. Sterling", honey malacca shaft and a 2 1/2" horn ferrule.

H. 1 1/4" x 2 3/4", O.L. 36"

\$700-\$1,200

256.



257.

255.



258. Bone Whippet Dress Cane

Ca. 1900-A carved buffalo horn dog with two color glass eyes, ornate silver metal collar, malacca shaft and a metal ferrule.

H. 4 ¾" x 1 5/8", O.L. 37"

\$500-\$800

259. Carved Pony Picnic Cane

Early 20th Century-A nicely carved briar of a pony with two color glass eyes and bridal, silver metal collar, English oak shaft, contains a compartment knife and fork, and a copper ferrule.

H. 2 ¾" x 2 ¾", O.L. 34 ½"

\$600-\$1000

260. Ivory Ruler Cane

Ca. 1820-A carved ivory handle with a gold cartouche of an elk atop, a rule which is marked 36" on one side and the other marked in fractions, coin silver collar, malacca shaft and a 4" brass ferrule-H. 1 ½" x 2", O.L. 37 ½"

\$700-\$1,200

261. Silver and Gold Dress Cane

Ca. 1900-A mix metal handle with dragon flies, flowers, etc., most of the animals and flowers are gold, a pair of unreadable touch marks, small gold collar, ebony shaft and a metal ferrule-H. 1 ¼" x 2", O.L. 36"

\$500-\$700

262. German Folk Cane

Ca. 1930-A carved bearded man with two color glass eyes, brass eyelets, natural branch shaft and a metal ferrule-H. 5" x 6", O.L. 37 ½"

\$300-\$500

258.

261.

259.

262.



260.



263.

263. Pig Ivory Dress Cane

Ca. 1900-A nice tusk with a silver end cap, a supporting crown collar which is signed with an English hallmark, ebony shaft and a brass ferrule. H. 5" x 2", O.L. 36"

\$400-\$600

264. Ivory Elk Cane

Ca. 1890-A carved walrus ivory handle, glass eyes, small ivory collar, ebony shaft and an ivory ferrule. H. 2" x 5", O.L. 36"

\$500-\$600

265. Chinese Ivory Cane

Ca. 1930-Multiple people and vegetation appear in this ivory carving, large silver metal collar, ebony shaft and a metal ferrule. H. 1 1/4" x 4 1/2", O.L. 36"

\$500-\$700

266. Whimsy Folk Cane

Ca. 1920-A carved one piece folk cane with original alligator finish, stationary ball and cage and no ferrule-O.L. 35 1/4"

\$200-\$300

267. Dragonfly Dress Cane

Ca. 1940-A signed 800 silver open work handle, a dragonfly and bamboo carved atop in a piece of black onyx, small silver collar, ebony shaft and a horn ferrule.

H. 2" x 2 1/4", O.L. 35"

\$500-\$700



264.

267.



265.



266.

268. Bone Dress Cane

Ca. 1850-A carved, probably religious cane with two faces, wrapped wire collar, stepped malacca shaft and a worn brass ferrule. H. 5" x 1 1/2", O.L. 34 1/2"
\$400-\$600

269. Art Deco Dance Cane

Ca. 1925-Ivory handle, signed sterling collar, oval ebonized shaft and a horn ferrule.
H. 1 1/4" x 5/8", O.L. 35 3/4"
\$300-\$500

270. Greyhound Ivory Cane

Ca. 1930-A carved ivory hound with red glass eyes, ornate silver metal collar, mahogany shaft and a bone ferrule.
H. 2 3/4" x 1 1/2", O.L. 35"
\$400-\$600

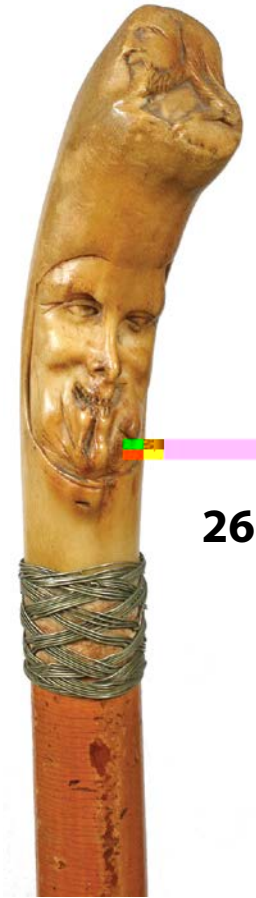
271. Nautical Presentation Cane

Ca. 1860-A carved whale's tooth with an inlaid baleen disc atop, coin silver inscribed presentation collar, ivory eyelets, rich mahogany shaft and a 2 3/4" metal ferrule-H. 1 5/8" x 1 7/8", O.L. 35"
\$600-\$1,000

272. Chinese Spitting Cane

Late 19th Century-A working example of this genre of comical cane, by pumping the ponytail the Chinaman spits, ebony shaft and a horn ferrule-H. 1 1/2" x 1 1/2", O.L. 37", ponytail 1 3/8"
\$1,300-\$1,600

270.



268.

271.

272.

269.





274.

275.

273. Ivory Dress Cane

Ca. 1890-Nicely carved art Nouveau handle, carved floral ivory collar, malacca shaft and an ivory ferrule-H. 3" x 2 1/2", O.L. 36 1/2"
\$500-\$600

274. Silver and Horn Dress Cane

Ca. 1900-A finely cast silver handle with a horn pommel, ornate silver cartouche atop, rich snakewood shaft and a horn ferrule.
H. 4 1/4" x 1 3/4", O.L. 38 1/2"
\$500-\$1,000

275. Sterling Camera Tripod Cane

Early 20th Century-A heavy cast signed sterling handle and collar, quality made, 3 legged tripod with expandable legs, leather covered shaft and a horn ferrule.
H. 1 1/4" x 3", O.L. 36"
\$500-\$1,000

276. Asian Ivory Monkey Cane

Ca. 1890-A carved crutch handle with many monkeys and vegetation carved on the handle, ebony shaft and an ivory ferrule.
H. 4 1/2" x 3", O.L. 36 1/2"
\$500-\$700

277. Dutch Silver Dress Cane

Ca. 1900-An ornate cast handle with various motifs of men on horses, small metal collar, snakewood shaft and a stopper ferrule.
H. 1 1/2" x 2 1/2", O.L. 37"
\$500-\$700

277.

276.

278. Frog Day Cane

Ca. 1920-A cast pewter handle, two color glass eyes, small white metal collar, hardwood shaft and a bone ferrule. H. 3 1/4" x 1 1/2", O.L. 37 1/2"
\$400-\$600



278.

279. Art Nouveau Dress Cane

Ca. 1895-Probably compressed tortoise, coin silver flower end cap and flower and stem attachment, silver collar marked M.M. for the maker's mark, snakewood shaft and a horn ferrule-H. 1 3/4" x 11", O.L. 36"
\$700-\$1,000

280. Dragon Slayer's Dress Cane

Ca. 1880-A signed 800 silver handle which is probably St. George, exotic wood shaft and a horn ferrule. H. 4" x 1 3/4", O.L. 36"
\$500-\$700

281. Scientific Device System Cane

20th Century-A John Weatherston label, handle and shaft holds what appears to be a telescope and a miniature hand held microscope, also a glass stopper bottle, brass handle with various coat of arms, long brass collar, hardwood shaft and a brass ferrule-H. 2" x 4", O.L. 37"
\$500-\$1,000

282. Snake Folk Art Cane

Ca. 1920-A carved one piece snake cane which has minimum paint remaining and no ferrule-O.L. 35"
\$100-\$200



281.

279.

280.

282.



281.



283.

283. Meissen Porcelain Dress Cane

Late 19th Century-A fine example of this factory's work of a lady in a veil, various flowers, thick ebony shaft and an ornate brass ferrule-H. 5" x 2 3/4", O.L. 36"

\$1,400-\$2,000

284. Horn Dress Cane

Ca. 1865-A carved horn with thumb rests, ornate signed sterling collar, bamboo shaft and a metal ferrule.

H. 4" x 3", O.L. 35 1/2"

\$300-\$400

285. Elephant Horn Cane

Ca. 1910-A carved elephant with ivory tusk and two color glass eyes, ornate unsigned sterling collar, malacca shaft and a metal ferrule.

H. 4 1/2" x 2 1/2", O.L. 35"

\$400-\$500

286. Defensive Dress Cane

Dated 1895-A weighted silver-plated handle with ornate scrollwork, small white metal collar, handle is weighted to be used as a club, ebonized shaft and a metal ferrule.

H. 1 5/8" x 2 1/2", O.L. 33 7/8"

\$200-\$300



284.

285.

286.

287. Asian Style Dress Cane

Ca. 1890-A sculpted silver handle with an ape kissing a fish, another ape may be seen cast within the end cap, signed sterling with what appears to be the marks for Gorham, exotic wood natural shaft and a metal ferrule-H. 3 1/4" x 4", O.L. 36"

\$600-\$1,000

288. Horse Folk Cane

Ca. 1920-A carved one piece cane of a horse in bridal, saddle, also an old gentleman with a long beard, probably Greek Isle and no ferrule. H. 4 1/2" x 3", O.L. 35 3/4"

\$300-\$400

289. Pomander Ivory Cane

Ca. 1880-An ivory compartment handle which has a gold filigree scent screen, snakewood shaft and a metal ferrule-H. 1 3/8" x 1 1/4", O.L. 34"

\$400-\$600

290. Ivory Dress Cane

Ca. 1870-A carved ivory handle, white metal collar, natural branch shaft with ivory dots inlaid on twigspurs and a metal ferrule.

H. 1 1/2" x 2 1/4", O.L. 34"

\$300-\$400

291. Art Deco Whippet Dress Cane

Ca. 1925-A cast nickel silver handle, nickel silver collar, semi flexible shaft and a brass ferrule.

H. 2 1/2" x 1 1/2", O.L. 35"

\$200-\$300

Now we will sell a few canes in house for the bidders visiting Nashville.

289.



287.

288.

291.



290.



Please check one.

Phone Bidder ☐ Absentee Bidder ☐

Kimball M. Sterling Inc. Auctioneers TFL-1915
125 West Market Street, Johnson City, Tennessee 37601
PH: 423.928.1471 • Fax: 423.928.2816
kimballsterling@earthlink.net

*After Sept 6th all communication should be
directed to 423-773-4073, and 4072. The Fax
will not be checked at the home office.
Please email after that date at kimballsterling@earthlink.net*

Name: _____

Address: _____

City: _____ State: _____ Zip: _____

Phone: _____ Email: _____ Fax: _____

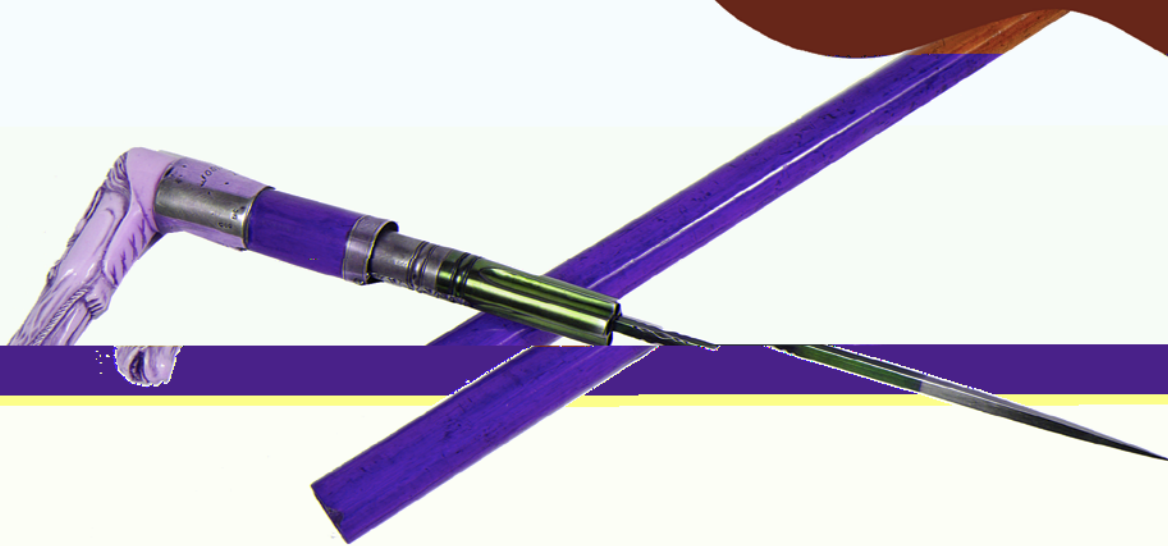
Lot #	Description	Bid

I understand that there will be a buyer's fee added to the gavel price. Please execute the above bids on my behalf. By signing this bid sheet I have entered into a contract with the auctioneers to pay for my purchases within 30 days after the auction. The buyer is to pay shipping.

Please fax this form to 423.928.2816.

Buyer's Signature: _____

WWW.AUCTIONAUCTION.COM



Kimball M. Sterling, Inc. (TFL-1915)
125 West Market Street
Johnson City, Tennessee 37601
kimballsterling @ earthlink.net
423.928.1471

Photography by James Price

Catalog Design by KT Design, LLC
www.kristaft.com

