

KIMBALL M. STERLING, INC.
Kimball M. Sterling, Inc.

PRESENTS

THE
STUART WHITE
CANE COLLECTION



SATURDAY, DECEMBER 1ST, 2007

ABOUT THE COLLECTOR

Stuart White has been named one of the top bandleaders in the United States. He and his orchestra have performed at several Presidential Inaugurations, including Richard Nixon, Ronald Regan and Bill Clinton. He has produced many celebrity acts such as Earth Wind and Fire, Bette Midler, Aretha Franklin, J. Leno and Tony Bennett.

Mr. White has been featured in New York magazine, the New York Times, Business Week, New York Post and many other periodicals and industry publications.

He has been interviewed by Al Roker on the Today show about his cane collection and has exhibited his collection at the Parrish and Katonah Museums. Some of his canes may be seen in "Canes of the United States" by Catherine Dike and various other publications. He has written several articles on the art of collecting canes.

Stuart began his collection in the early 1970's. He had a fascination as a child with the Western hero Bat Masterson. He, like many cane collectors had a toy Masterson cane.

When he began his collection, there was little knowledge of cane value and not much reading material available. He began his own quest for knowledge in many different categories of canes. In the early 80's he began tracking prices of folk-art cane. He like most collectors has purchased canes that he admired not just because of their value, but what that cane meant to him. He has never stopped his pursuit of canes throughout the past 35 years. He now resides with his wife, Carmen, in their Manhattan apartment and spends most of the week-ends in Westhampton Beach.

He is very well known for the canes that he carries in the New York social crowd and still very active in Stuart White Productions, which produces all genres of music throughout the world.

Stuart White has the most versatile knowledge of the walking stick field as any collector in the world. His personal love for the field of canes and walking sticks have brought you this Part I of the Stuart White Collection.



KIMBALL M. STERLING, INC.
Kimball M. Sterling, Inc.

PRESENTS

THE STUART WHITE CANE COLLECTION

ANTIQUE CANE AUCTION

SATURDAY, DECEMBER 1ST, 2007- 1:00 P.M. E.S.T.

PREVIEW

FRIDAY, NOVEMBER 30TH - 12:00 P.M. - 4:00 P.M. E.S.T.

BY APPOINTMENT THE WEEK BEFORE THE AUCTION
OR 10:00 A.M. UNTIL THE AUCTION TIME ON THE DAY
OF SALE.

*The auction will be carried live on the
internet with Ebaylive*

Kimball M. Sterling Auction Gallery
125 West Market Street Johnson City, Tennessee 37601
kimballsterling @ earthlink.net
423.928.1471

Member National Auctioneers Association



TERMS AND CONDITIONS

1. Cash, check, MasterCard, or Visa. A 15% buyers' premium will be added to the hammer price as part of the sale price for in-house, phone, and absentee bidders. We reserved the right to hold purchases until the buyers checks clears if buyer is not known by us. Bank letter of credit is acceptable. A 20% buyers fee will be charged to Ebaylive bidders.

2. Mail or phone bids are accepted; the firm may require a deposit.

3. Kimball M. Sterling, Inc. has endeavored to catalog and describe the property correctly. All property is sold as is and neither the auction company nor the consignor will be responsible for descriptions, genuineness, provenance or condition of the property. No statement in the catalog made orally at the sale or otherwise shall be deemed to be a warranty, representation, or an assumption of liability.

4. In the event of any dispute between bidders, the auctioneer shall have total discretion to determine the successful bidder, in which his determination shall be final or to re-offer and resale the article in dispute. Title of the item or items purchased by the bidder will pass at the fall of the gavel and declaration of bidder.. This is not an approval auction.

5. Principal auctioneer: Kimball M. Sterling #2467. B. Elizabeth Sterling, auctioneer # 5757. Firm Kimball M Sterling Inc. TFL-1915

6. Bidders may bid live on the Internet by visiting <http://www.auctionauction.com> You may also view the auction at this site and bid by phone.

7. Communications: Telephone 423-928-1471. Fax 423-928-2816. Cellular 423-773-4073, 423-773-4072. Email kimballsterling@earthlink.net

8. Worldwide shipping is available. We encourage you to use United States Mail. Our packing service is free but the buyer must pay postage and insurance fees of their choice.

9. Kimball M. Sterling, Inc. will not be held responsible for bids not received in time for the auction or slow Internet bids. We will not be responsible for items left on our location for over 30 days.

10. Sale will be conducted at 125 West Market Street, Johnson City, Tennessee. 37604. Announcements day of the sale take precedence over pre-sale advertising. Any litigation that pertains to this auction will be conducted in the county of Washington in Tennessee and is agreed upon by registering for this auction.

11. Airport is the Tri-Cities Airport, which is approximately 20 miles from the gallery. Internet catalog and live bidding available at www.auctionauction.com Best Western Hotel: 423-282-2126. A very fine hotel which offers Sterling Auction a discount rate is the Carnegie Hotel 1216 W State of Franklin Rd, (423) 979-6400

12. Please call for condition report on sale lots or email us. We do send out multiple photos by email of any lot in the auction. By registering for this auction you accept the terms and give Kimball M. Sterling auctions the right to charge your credit card on file for purchases and shipping, which you have entered on your registration.

13. The auction will be conducted on Saturday, December 1st at 1:00 Eastern time in our gallery and also live on the net.

14. Parking service is free.



1. Pewter Court Cane

Ca. 1780- A nice pommel handle with a pewter overlay of fine handwork. The cane has its original bail with cast nails. The mallacca shaft has its original patina with a 4" pewter and iron hand wrought ferrule- H. 1 1/2" x 3 1/2", O.L.- 40"

\$1500-\$2500

2. Native American Ivory

Ca. 1875- A precisely carved handle with a chief perched behind a tree ready to capture an Indian maiden. It has a signed sterling and engraved collar, a stepped exotic wood shaft and a bi-metal ferrule. There is a very minor repair on the rear of the handle and the face of the maiden has a small infraction-H. 1 5/8" x 4 5/8", O.L. 35 3/8"

\$2,000-\$4,000



1.



2.





3.

3. Carved Asian Head

Ca. 1880-An interesting Asian gentleman with blue eyes and a large mustache. There is a woven leather collar, a honey malacca shaft and a 1" horn ferrule-H. 2 1/4" x 2 1/2", O.L. 31 7/8"

\$1,500-\$2,500

4. Carved Exotic Wood

Ca. 1900-Exotic wood carved in the form of a flower which is polychromed and has an agate trade bead inset into the top of the handle. It has a hallmarked silver collar, a chip carved hardwood shaft and a bone ferrule-H. 2 1/2" x 2", O.L. 36 3/8"

\$500-\$700

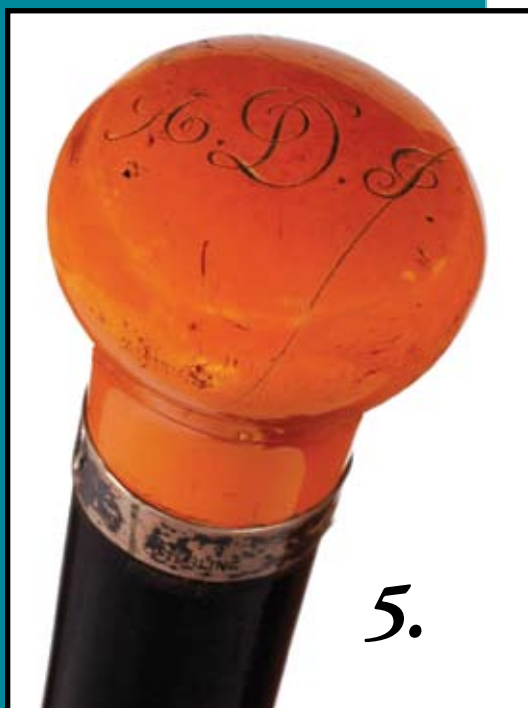
5. Ivory Knob

Ca. 1880-Inscribed "A.D.J." on the top, a signed sterling collar, an ebonized shaft and no ferrule-H. 1 3/8" x 1 3/8", O.L. 35 7/8"

\$300-\$400



4.



5.



6. *Ivory Eagle Dress*

Ca. 1900-A carved eagle head with two color glass eyes attached to a faux tortoise shell crook handle, a brass collar, exotic wood shaft and a horn ferrule-H. 3 3/8" x 3 1/2", O.L. 36 5/8"

\$500-\$700

7. *Ivory Hands On Dress*

Ca. 1880-A very fine ivory carving of this period with detailed work on top of the handle with a star. There is a carved fluted cuff and a rope ivory collar. The collar is gold, the shaft is ebony and it has a metal ferrule-H. 3 1/2" x 1 1/2", O.L. 35 3/8"

\$600-\$1,200

8. *Carved Wood and Ivory*

Ca. 1890-A one-piece branch shaft which has a carved jester with an ivory face and ivory hands. There are traces of early gold paint on the character and also on the shaft. It has a horn ferrule-O.L. 35 3/8"

\$300-\$600

7.

6.



8.





9.

10.



11.



12.



9. Ivory Horse

Ca. 1900-A stylized carved horse with stirrups attached to an oak shaft by two brass collars and a metal ferrule-H. 5" x 1 5/8", O.L. 34"

\$300-\$600

10. Coin Purse System Stick

Ca. 1880-The handle has a spring loaded coin purse and a push button opening mechanism. A brass medallion of a lady tending her sheep is inlaid into the top. It has a hardwood shaft and a bone ferrule-H. 2 1/8" x 1 3/8", O.L. 35 1/4"

\$300-\$600

11. Ivory Horse Measure

Ca. 1875-A very nice example of the genre with a brass cross bar and a brass attachment to the wood measure. This type of horse measure did not have a level. It is all original with a rich malacca shaft and a 1 1/2" brass ferrule-H. 1 3/4" x 1 1/2", O.L. 37 3/8"

\$500-\$700

12. "Propriete Exclusive" Bronze Dress

Ca. 1885-A superb casting of a reclining female nude which is smiling and appears to be intoxicated. She is wrapped in grapes and leaves holding a Greek ewer. Oral legend is that this cane once belonged to King Edward VII and was given to a grandmother as a fee for her advice for the purchase of a horse. It has a snakewood shaft and a 1 1/2" horn ferrule-H. 5 1/8" x 3 3/4", O.L. 37 1/8"

\$1,500-\$2,500

13. Ivory Military Corps

Ca. 1810-An ivory knob with an inlaid medallion which has the American eagle sitting upon a cannon. The medallion has the name "Corps" and also a stack of cannon balls. The collar is coin silver, silver eyelets, an American hardwood shaft and a 2 ½" brass and iron ferrule-H.2 " x1 ¼", O.L. 35 ½"

\$800-\$1,200

14. Carved Ivory Dress

Ca. 1880-An interesting and attractive carved handle of a walnut which is partially hulled. There are also high relief carving of branches and leaves. It has a beaded metal collar, an ebony shaft and a horn ferrule-H. 5 1/8" x 2 3/8", O.L. 36 3/8"

\$800-\$1,500

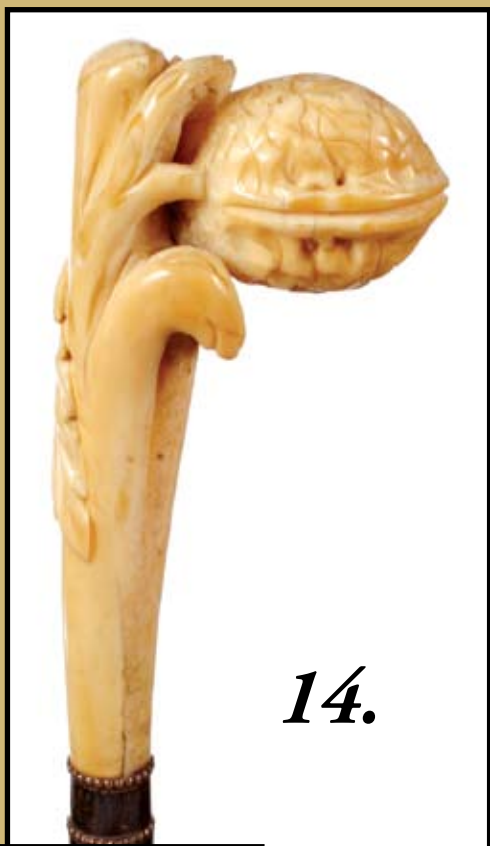
15. Ebony and Ivory

Ca. 1915-An ivory handle which is inscribed "J.H.L." in block letters, an ebony shaft and a horn ferrule-H. 1 3/8" x 1 ½", O.L. 36"

\$300-\$400



13.

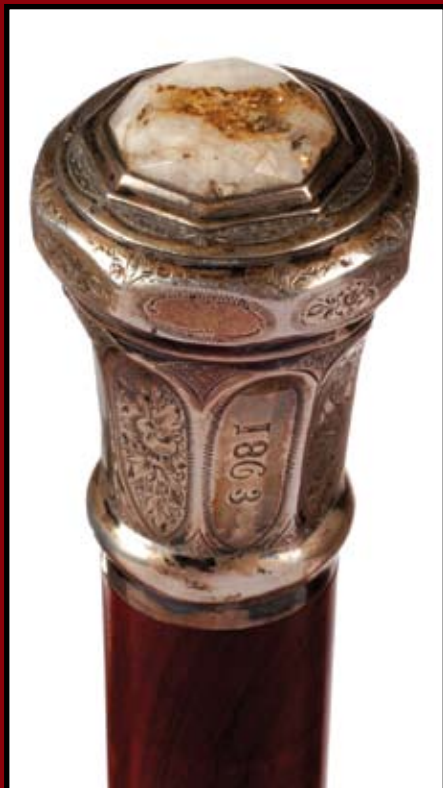


14.



15.

16.



16. California Gold Quartz Presentation

Ca. 1863-A prime example of the most sought after category in the antique walking stick field. The large, Civil War period silver handle has a faceted hexagonal piece of gold quartz with a very large gold vein throughout. The stone is inlaid firmly into a cartouche of the same shape with hand engraving throughout the top. There are eight side panels of which four are hand engraved with flowers and leafs and the other four are engraved presentation panels. The presentation reads "Presented by H.S. Allen to his Mother 1863". The massive shaft is a very rich exotic wood and it has a 2" silver and iron ferrule-H. 2 3/8" x 1 5/8", O.L. 35 7/8"

\$10,000-\$15,000



17. Ivory Dress

Ca. 1890-An ivory dress with a baleen spacer, an exotic wood shaft and a bone ferrule-H. 2 3/8" x 1 1/2", O.L. 33 1/8"

\$200-\$300

18. Ivory Dress

Ca. 1920-A nicely aged handle, brass collar, ebonized shaft and a 1" ivory ferrule-H. 2 1/8" x 1 1/16", O.L. 35 3/8"

\$200-\$300

19. Ivory and Gold Dress

Ca. 1920-An oval ebony shaft, signed 14K gold collar and a horn ferrule. The shaft is inscribed "Sulka" and it also has the gold initials "S.J.S"-H. 1/2" x 1 1/4", O.L. 34 1/2"

\$300-\$500

20. Toledo Sword Cane

Ca. 1900-A near mint example of a 27 1/4" engraved Toledo blade with blood grooves. The entire shaft is faux bamboo done in partridge wood and it has a 1" bi-metal ferrule-H. 4 1/2", O.L. 34"

\$500-\$1,000

21. Silver Inlaid Wood

Ca. 1890-A briar wood handle which is inlaid with silver Moroccan style decoration, a silver and gold engraved collar, a faux snakewood shaft and a horn ferrule-H. 1 1/2" x 4", O.L. 34"-

\$300-\$600



17.

18.



19.



20.



21.





22.

22. *Ivory Dog*

Ca. 1880-A carved ivory two-piece handle with a brass collar and a diminutive malacca shaft with a brass ferrule-H. 3" x 2 7/8", O.L. 33 1/4"

\$300-\$400



23.

23. *Carved Ivory*

Ca. 1897-This is a large ivory handle with silver end caps of which one is inscribed "Christmas 1897". The other end cap has an unreadable inscription and has minor damage and dents. It has a horn collar, a rich snakewood shaft and a horn ferrule-H. 1 3/4" x 4 7/8", O.L. 36 1/4"

\$1,000-\$1,500



24.

24. *Ivory Dress*

Ca. 1890-A very unusual scrimshaw handle with a band of an exotic skin which is placed between two baleen spacers. It has a very unusual decorated malacca shaft done in suite with the band of skin on the handle. It has a horn ferrule-H. 4" x 1 7/8", O.L. 36"

\$1,000-\$2,000



25. Dress Silver Sword

Ca. 1910-A triangular 27 ½" blade with a locking mechanism, silver collar and a very ornate silver handle. The shaft is mahogany and it has a metal ferrule-H. 2 ¼" x 1 1/8", O.L. 36"

\$700-\$1,200

26. French Silver Nouveau

Ca. 1890-This is a signed .800 silver handle. It is a very fine example both front side and back of a premier silversmith. It has an ebony shaft and a metal ferrule-H. 4" x 4 ½", O.L. 40 ½"

\$800-\$1,500

27. Silver Rabbit

20th Century-This silver rabbit is signed Cook and Sons and has enamel eyes. It has a massive ebony shaft and a horn ferrule-H. 1 ¾" x 4 3/8", O.L. 36 ½"

\$200-\$400



25.



26.



27.





28.



29.

28. Ivory Knob

Ca. 1880-Hexagonal, fluted silver collar, oak shaft and a bi-metal ferrule-H. 1" x 1 1/8", O.L. 39 1/8"

\$200-\$400

29. Silver Skull and Wreath

Ca. 1900-This handle is hallmarked but unreadable. It appears to be from a Russian workshop and has a very high content of white brass mixed with it. The shaft is hardwood and it has a small ivory ferrule-H. 2 3/4" x 4 3/8", O.L. 34 1/2"

\$300-\$500



30.



30. Stag Dress

Ca. 1920-A very nice stag dress which feels good in the hand, metal collar, maple shaft and a metal ferrule-H. 2" x 4 1/2", O.L. 35 1/4"

\$200-\$300



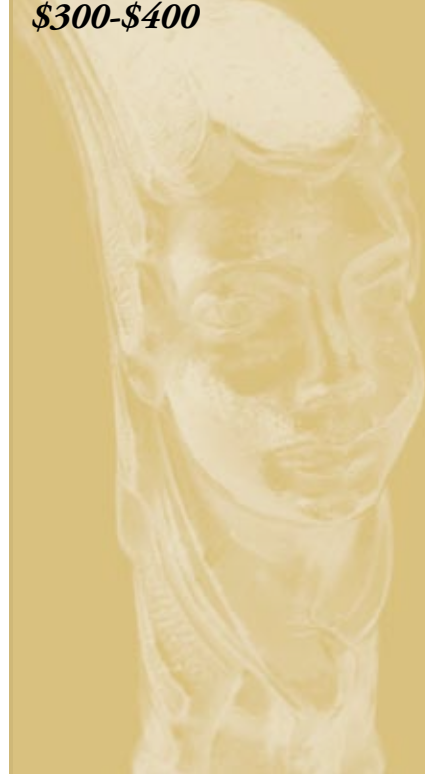
31. Gold Plated Dress

Ca. 1890-Probably a Woodland nymph, exotic wood shaft and a metal ferrule-H. 1 5/8" x 2 1/2", O.L. 36 3/8"

\$300-\$400



31.



32. Ornate Silver Sword

Late 19th Century-A nicely engraved and hammered pommel handle with unreadable hallmarks, but for sure a Continental piece. It has a 20 3/8" brass hexagonal pike weapon, a hallmarked collar, hardwood shaft and a lacquered ferrule-H. 3 1/2" x 1 7/8", O.L. 38"

\$1,000-\$1,500

33. Porcelain Dress

Ca. 1890-This cane is French. It has a gold collar signed "Antoine-Paris", honey malacca shaft and a 1" horn ferrule-H. 1 3/4" x 2", O.L. 36"

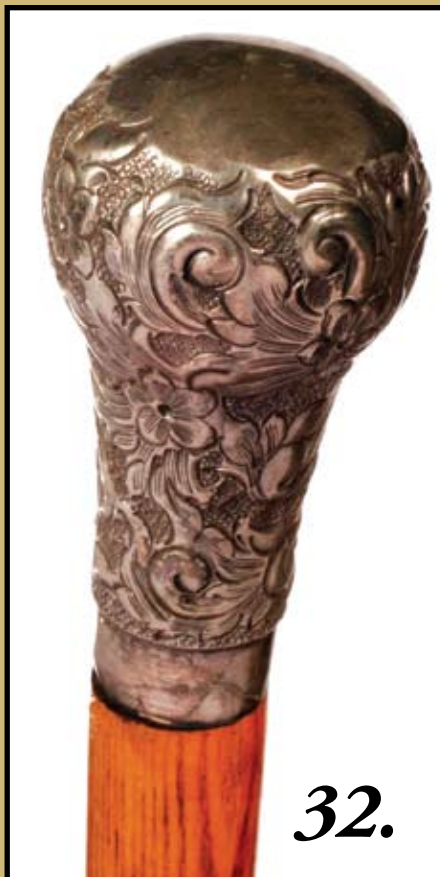
\$800-\$1,200

34. Ivory and Ebony Dress

Ca. 1920-A curved edge triangular ebony shaft, an inscribed "R.S.H." ivory handle and a horn ferrule-H. 1" x 7/8", O.L. 35 3/8"

\$300-\$500

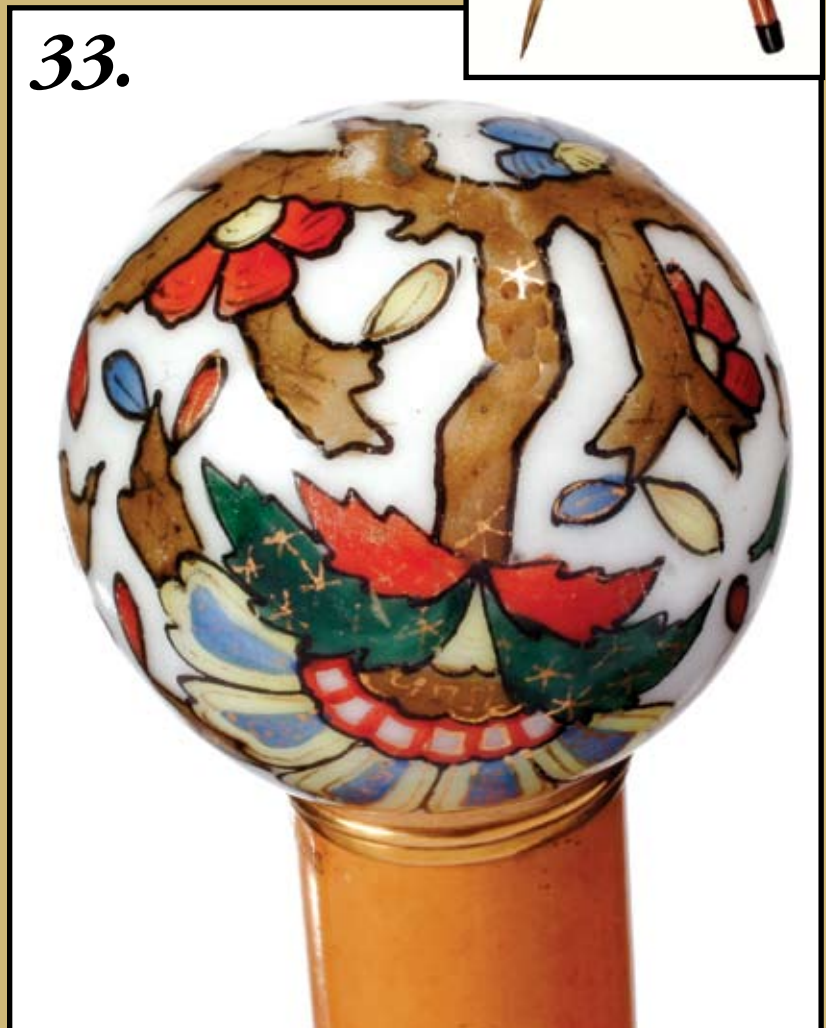
34.



32.



33.





35.



35. *Carved Bone Sword Cane*

Ca. 1880-A very nicely carved bone handle with a copper collar and a 24 3/4" engraved two-sided blade with a locking mechanism. It has a very rich malacca shaft and a brass ferrule-H. 5" x 3 5/8", O.L. 34"

\$800-\$1,200

36. *Cockatoo Dress*

Ca. 1890-This is a one piece handle which appears to have been covered with some type of exotic skin such as shagreen. It has a carved brown horn beak and two color glass eyes. There is a small horn collar, a massive malacca shaft and a matching horn ferrule-H. 3" x 2 3/4", O.L. 33 5/8"

\$800-\$1,200



36.



37.



37. *Ivory Knob*

Ca. 1820-An ivory knob with a couple of scribed ink lines near the base, a coin silver collar which is inscribed "R.A. Cony, Augusta, Me." An American oak shaft, a pair of medallion style coin silver eyelets and a 2" metal ferrule-H. 2" x 1 5/8", O.L. 34 1/8"

\$500-\$1,000

38. Important Inuit

Ca. 1880-A wonderful example of the Northwest Coast Natives. The handle is fully carved bone, probably walrus. It has 19 inlays of abalone and baleen and a tribal carving of a bird like human creature. It is fully carved on both sides and on the top. It has a period malacca shaft and a horn ferrule-H. 2" x 3 3/4", O.L. 35 1/4"

\$2,000-\$2500

39. Ivory Dress

Ca. 1910-An unusually carved diminutive dress cane with two brass collars, an ebony shaft and a horn ferrule-H. 4 1/2" x 3/4", O.L. 35 7/8"

\$200-\$400

40. Ivory Dress

Ca. 1910-A hexagonal ivory handle, small signed sterling collar, ebony shaft and a horn ferrule-H. 1 3/4" x 1 1/8", O.L. 36 1/8"

\$200-\$300

38.

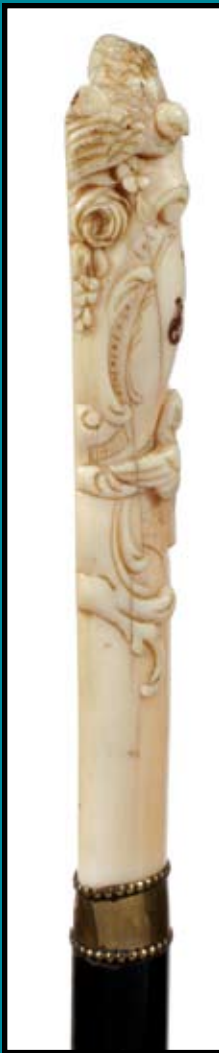


39.



40.





41.

43.



41. Carved Ivory Love Birds

Ca. 1875-A very nicely carved ivory handle with two birds and various flowers and scrolls. It has a gold letter "J" attached to the handle, a brass beaded collar, an ebony shaft and a metal ferrule-H. 5 5/8" x 1 1/4", O.L. 36 1/2"

\$500-\$800

42. Bone Shepherds Folk Art

Ca. 1830-A very crudely scrimshawed dog and lamb probably on a sheep's bone with the initials "C.R." inscribed. It has lanyard holes, twig spur shaft and no ferrule-H. 1 5/8" x 1 3/8", O.L. 35 5/8"

\$200-\$250

43. Carved Ivory Dress

Ca. 1875- A deeply carved knight with feathers in his helmet and a pair of flags as the background. It has an ebony shaft and a horn ferrule-H. 6 1/8" x 1", O.L. 35 5/8"

\$400-\$600



42.

44.



44. French Enameled and Silver Dress

Ca. 1890-The handle has an enameled couple in a dance position with faceted blue stones surrounding it. The silver handle is reeded and has oak leaf decoration. It is also inscribed "France" and has an ebony shaft and a metal ferrule-H. 4" x 1 3/8", O.L. 35 7/8"

\$800-\$1,200

**45. Scrimshawed
Ivory Globe**

Early 20th Century-The ivory globe is scrimshawed with an early world map. It is very fine work and done by a trained hand. This cane has a honey malacca shaft, a brass collar and a horn ferrule-H. 2 1/8" x 2 1.8", O.L. 34 5/8"

\$600-\$1,200



45.

46.



46. Silver Dress

Ca. 1790-A one-piece carved and stepped malacca shaft with a silver handle, two silver eyelets, two silver collars and a 3" brass ferrule. This is a nice original cane of the period-H. 3/4" x 7/8", O.L. 34 3/8"

\$800-\$1,200

47. Ivory and Wood Orleans

Ca. 1885-A carved ivory bearded Orleans with a wood and ivory hat. It appears that he may have had something in his mouth at one time. It has a rich mahogany shaft and a worn copper ferrule-H. 2 1/2" x 2", O.L. 36"

\$500-\$1,000



47.





48.

49.



48. *Carved Ivory Courting Cane*

Ca. 1875-A nicely carved handle of a lady seated with a gentleman peeking around a tree. It is deeply carved and very attractive. It has a belt buckle ivory collar, a mahogany shaft and a bone ferrule-H. 6 1/2" x 1 1/8", O.L. 36 1/4"

\$800-\$1,200

49. *Carved Ivory Dress*

Ca. 1880-A spiral carved ivory handle with flowers and leaves, beaded silver collar, ebony shaft and an ivory ferrule-H. 8" x 1 3/8", O.L. 36 1/4"

\$300-\$500

50. *Conductor's System Stick*

Ca. 1888-This system stick has a silver hallmarked handle which, when unscrewed, contains a 15" conductor's wand. The wand also has a silver pommel handle with a silver collar which is inscribed with the date and a silver end cap. It has an ebonized shaft and a bi-metal ferrule-H. 1 3/8" x 1", O.L. 29 7/8"

\$2,000-\$2,500

50.



51. Massive European Carved Ivory

Ca. 1800-This wonderful massive handle is done in the Middle European artistic tradition. It is a cane which honors the time old tradition of the hunt. The patina on the ivory is original and it has a very fine pressed silver design collar. The massive, original rain malacca shaft has a large worn bone ferrule-H. 3 1/2" x 2", O.L. 37 7/8"

\$5,000-\$6,000





52.

52. Ivory Figural

Ca. 1880-Continental carved man with a hat and long tassel. It has a silver collar, a twig spur, exotic wood shaft and a horn ferrule-H. 2 3/4" x 2", O.L. 36 1/4"

\$500-\$1,000

53. Art Nouveau Silver

Ca. 1895-A full figured silver nude and Satyr on the rear. It is marked 900 silver and also has the makers marks. This Continental cane has a hardwood shaft and no ferrule-H. 3 1/4" x 4 1/2", O.L. 35 3/8"

\$800-\$1,200

54. Ivory and Wood Dress

Ca. 1885-This unusual cane has a hardwood ball handle attached to an ivory shaft which has a horse, saddle, dog and riding helmet. The cane has a silver collar, a hardwood shaft and a metal ferrule-H. 7 3/8" x 2 3/8", O.L. 36 5/8"

\$500-\$1,000

53.



54.



55. Ivory Nude Medusa

Ca. 1880-A fully nude carved female with large strands of hair which end in five snakeheads. Inlaid into her turban are three semi-precious stones. She has that quaint smile about her. This probably American cane has a signed sterling collar, an ebony shaft and a horn ferrule-H. 2 1/4" x 1 3/4", O.L. 35 3/8"

\$3,000-\$4,000



55.

56. Ebony and Ivory

Ca. 1910-A massive carved ivory hand holding an ivory baton which also has an ivory ring with a small piece of mother of pearl attached. It has a brass inscribed collar, mahogany shaft and a bi-metal ferrule-H. 2 5/8" x 3 3/4", O.L. 33"

\$400-\$800



56.

57. Gold Dress

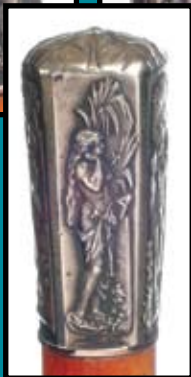
Ca. 1870-A finely crafted Continental dress stick which has been tested to be at least 16K gold. It has delicate garland gold work throughout the handle and collar. The shaft is a very rich honey malacca and it has a bi-metal ferrule-H. 1 7/8" x 1", O.L. 35 1/2"

\$800-\$1,200



57.

58.



59.

58. Toledo Sword Horn

Ca. 1870-A very unique handle which possibly could be Rhino with twig spur decoration throughout. It has a hand engraved silver collar, a malacca shaft, signed and interlocking four sided 27 5/8" blade, and a metal ferrule.-H. 4 3/4" x 4 1/8", O.L. 35 5/8"

\$600-\$1200

59. Classical Silver Dress

Ca.1870- This Continental silver has five full figure panels of semi-nude females. The casting appears to have been done by a major workshop. The top of the handle has both leaf work and gold work. The original mallacca shaft has a great patina and a bi-metal ferrule. The handle is signed but unreadable. H-21 1/4" x 1", O. L.-35 1/2"

\$800-\$1200

60. Ivory and Silver Dress

Ca. 1873-This nautical dress has an inlaid abalone medallion in it's top and also inlaid stars, flowers and scrolls. The hexagonal ivory center section is inscribed "John Hoch April 1st 1873" in early India ink. It has a very ornate gold collar, an exotic wood shaft and an unusual ferrule which is made of iron. There is one star missing from the inlay on the top of the handle-H. 2 1/2" x 1 1/2", O.L. 35 1/2"

\$800-\$1,200

60.



61. Toledo Sword Cane

Ca. 1900-This sword cane has a 27 ½" signed Toledo blade, a gold collar which is inscribed "L. Kubler New York", a malacca shaft and a copper ferrule-H. 5", O.L. 35 ¼"

\$400-\$600

62. Sting Ray Tail and Silver and Silver

Ca. 1850-A prime example of this genre. The handle is hand engraved with leaves and the initials "J.H.H." The shaft is in near mint condition with a lanyard chain and a silver ferrule-H. 2" x 2 1/8", O.L. 36 ½"

\$1,500-\$2,000

63. Ivory Knob and Whale Bone

Ca. 1860-An ivory knob with a baleen disk inserted within the top of the handle. The shaft is hexagonal for about 2/5 of the way down and then it rounds off through the rest of the cane to the tip where it has no ferrule and never did. The diameter of the shaft, where it meets the handle is 15/16"-H. 2 ½" x 1 ½", O.L. 34 5/8"

\$1,500-\$2,500

64. Decorative Bone

20th Century-A segmented bone cane with carving and inking. It has a bi-metal ferrule-O.L. 34 1/8"

\$300-\$400



61.



62.



63.



64.





65.

65. *Masonic Ivory*

Ca. 1875-An L handle ivory which has a Masonic compass and ruler on the end of the handle, typical age cracks, beaded signed silver collar, ebonized shaft and a horn ferrule-H. 1 5/8" x 3 1/4", O.L. 36"

\$400-\$600



66.

66. *Ivory Pig*

Ca. 1885-A very unique smiling pig with a blue bow in her hair. It has a hallmarked ornate British collar, a mahogany shaft with some minor splitting and a very unique brass and iron bullet style ferrule-H. 1 3/4" x 1 3/4", O.L. 33 1/2"

\$800-\$1,200



67.

67. *German Art Nouveau*

Ca. 1885-A very unique G.F. Schikz 800 silver signed handle. The ladies hair flows all the way to make a complete tau handle. It has a rosewood shaft, a brass ferrule and a few minor dents in the handle-H. 3" x 4 5/8", O.L. 31 3/4"

\$800-\$1,200



68.

68. *Art Nouveau Silver*

Ca. 1890-A very nice massive silver handle which shows both front and back of a sleeping nude wrapped in a flowing blanket. The handle is marked 925, a rich mahogany shaft and a metal ferrule-H. 2 1/4" x 5 1/4", O.L. 36"

\$800-\$1,200

69. Silver Nude

Ca. 1875-A full figure nude in silver which has a slave cuff attached to her right leg. The cuff has a chain which leads underneath the drapes of the handle. The large silver handle is marked 925, exotic wood shaft and a horn ferrule-H. 4 ½" x 3", O.L. 36 ¼"

\$1,000-\$1,500

70. Silver Dress

Ca. 1940-This is a silver plated handle which has been lacquered. It has a newer ebonized shaft and no ferrule-H. 3 ¾" x 4 1/8", O.L. 33 ½"

\$200-\$300

71. Ivory Dress

Ca 1885-A carved ivory clinched fist with two pewter spacers and a collar which is made of some type of hard substance. It has an exotic wood shaft and a 2" iron ferrule-H. 1 7/8" x 1 7/8", O.L. 33 3/8"

\$400-\$800

72. Whippet Stick

Ca. 1950-This crook handle has two color glass eyes and a copper collar, a hardwood shaft and a copper ferrule-H. 3 1/8" x 4 1/2", O.L. 35 ½"

\$200-\$300



69.



71.



70.



72.



73.



73. Amelia Earhart Cane

Ca. 1930-A silver plated handle of the great female flyer. This was probably a souvenir of her great flight. It has a rope tassel which attaches to the collar, a massive bamboo shaft and a bi-metal ferrule- H. 2 1/4" x 2 1/8", O.L. 34 3/4"

\$500-\$1,000

74. Court Sword

Ca. 1780-This is the prime example known to exist in the world of early sword canes. It has a sand cast pommel handle which is bell bronzed and also a 4" brass ferrule which is all done by hand. There are two copper collars where the shaft and the handle join and also a bell bronzed bail. The cane has a locking mechanism and a 4-sided 30", hand forged blade. The handle is a very rich malacca and the shaft which holds the blade is massive honey malacca -H. 2" x 1 1/4", O.L. 1 1/4"

\$5,000-\$6000

75. Dulcimer System Stick

Ca. 1950-These canes were made by a North Carolinian that would sit up on mountain roads near Asheville, North Carolina. This is the second one of these that we have seen, probably due to living in the area. It is made from native American walnut and cherry. The carved dog has two color glass eyes, whittled tuning pegs, brass screws and no ferrule. All it needs is a tuning and is ready to play-H. 4 1/8" x 6", O.L. 36 5/8"

\$800-\$1,200

74.



75.



76. Historical Ivory Knob

Ca. 1829-The silver collar is inscribed "This cane grew on Fort Putnam, Cambridge, Mass. Presented by Thomas Hastings to Maj. Sam Hastings 1829" This was a presentation from a son to a father who was a Revolutionary war officer. It has Medallion silver eyelets, a massive, wild cherry shaft and a 2" brass ferrule-H. 1 ½" x 1 ½", O.L. 47 3/8"

\$1,500-\$2,500

77. Inked Cat Lady

Ca. 1890-An ivory handle with a bone end cap depicting a well dressed lady carrying a somewhat obscure looking cat. It has ivory eyelets, ivory collar, probably a replacement malacca shaft and a horn ferrule-H. 3 ½" x 1 1/8", O.L. 37 1/8"

\$800-\$1,200

78. Silver Nude

Ca. 1875-A French .800 silver handle of a full figured reclining nude and leafs. It has a very rich snakewood shaft and a horn ferrule-H. 4 ¼" x 3 5/8", O.L. 37"

\$800-\$1,200



78.





79.

79. Ivory King Tut

Ca. 1880-A nice large ivory crutch which has a carving on the forward section of the cane of what appears to be King Tut. It has a 1 1/2" ivory collar, a malacca shaft and a horn ferrule-H. 3 1/4" x 4 3/4", O.L. 36"

\$800-\$1,200

80.



80. Continental Silver

Ca. 1880-A high relief handle which has knights on horses with swords, archers and castles. It has an ebony shaft and a horn ferrule-H. 1 5/8" x 1", O.L. 36 1/4"

\$500-\$1,000

81. Malacca Sword Stick

Ca. 1880-A very nice original interlocking example with a 19 1/2" four-sided blade. The malacca handle and shaft are in very fine condition, two silver collars and an iron ferrule-O.L. 36"

\$500-\$1,000



81.



82. Carved Ivory Lion

Ca. 1870-A massive carved lion with two color glass eyes with average ivory striations. It has a signed sterling collar with the name "S. W. Goodwin", an ebony shaft and a brass ferrule-H. 1 7/8" x 4 1/2", O.L. 35 1/2"

\$600-\$1,200

83. Bronze Nude

Ca. 1885-This solid bronze handle which is signed "Violence" is a great art piece but has the weight of a defensive stick. It has a very rich mahogany shaft and a bi-metal ferrule-H. 2 3/4" x 4", O.L. 36 1/4"

\$800-\$1,200

84. Tippler's Stick

Ca. 1890-A very nice example with both the drinking glass and the tube. It has a copper handle, copper collar, hardwood shaft and a metal ferrule-H. 1" x 1 3/16", O.L. 34 5/8"

\$300-\$500

82.



83.



84.





85.

85. Ivory Figural

Ca. 1850-A carved ivory handle of a lady in a hat with average ivory striations for a cane of this age. The shaft is an malacca and it has a 1 1/2" bone ferrule-H. 1 5/8" x 4 5/8", O.L. 33 1/4"

\$500-\$1,000



86.

86. Asian Ivory

Ca. 1880-The detail on this massive handle is quite extraordinary. It appears to be some type of wild cat. The handle has a few minor problems which are not annoying to the educated buyer. It is missing one glass eye and has damage to one ear and one leaf. The collar is an ornate silver collar, hardwood shaft and a bi-metal ferrule-H. 5 5/8" x 1 1/2", O.L. 34 1/4"

\$1,000-\$2,000



87.



87. Fountain Pen System Stick

Ca. 1870-A very unique ivory knob which when unscrewed exposes a solid bell bronze ink pen. The top of the handle can also be unscrewed and there you will find a small brass reservoir with a screw top to be used as an ink well. The cane has a brass collar, a malacca shaft and a horn ferrule-H. 1 5/8" x 1 3/8", O.L. 36"

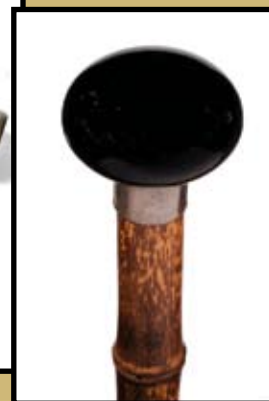
\$800-\$1,200



88. *Blow Gun System Stick*

Ca. 1880-Black porcelain handle and brass fittings. The metal ferrule and the handle both remove to make the blow gun functional. It has a split bamboo shaft, which needs minor restoration, and it comes with one original dart-H. 1 1/8" x 2", O.L. 34 5/8"

\$500-\$1,000



89. *Asian Ivory*

Ca. 1885-A carved ivory handle with butterflies and birds which has an ebony shaft which is inlaid with ivory. About halfway down it is spiral carved and there is a bone ferrule-H. 1 1/2" x 1", O.L. 33 3/8"

\$400-\$800



89.



90. *Carved Ivory Hunt Scene*

Ca. 1840-A handle depicting four dogs which are carved in relief hunting a gigantic rabbit. This is a very nice original cane with two ivory eyelets, a rich malacca shaft and a large bone ferrule-H. 2 5/8" x 1 5/8", O.L. 36 1/4"

\$800-\$1,200



90.





91.

92.



91. Ruler System Stick

Ca. 1870-A very nice hexagonal, oak shaft example with a brass bullet ferrule-H. 5 8" x 1", O.L. 36 1/8"

\$300-\$500

92. Flashlight System Stick

Ca. 1940-A near mint example of this American patented cane. The handle is a painted milk glass and the battery reservoir appears never to have seen a battery. It has a maple shaft and a metal ferrule-H. 2 1/8" x 2", O.L. 34 1/2"

\$300-\$400



93.



93. Surprise Sword Cane

Ca. 1870-Seeing a gentleman walking down the street with this twig spur primitive cane, one would have never thought that it had the very precise, blued and gold gilded 23" blade inside with a locking mechanism. It has as copper and iron ferrule, and is in nice original condition-O.L. 34 7/8"

\$500-\$700

94. Nautical Whalebone

Ca. 1850-The pommel handle has a hexagonal carving touch to it. It is a nice original cane of this genre and in very fine condition-H. 2 3/4" x 1 1/2", O.L. 35 1/4"

\$1,000-\$2,000



94.



95. Nautical Carved Fist-

Ca. 1850-A top of the line example of a skillful sailor's hand. The handle has wood, baleen, horn and ivory spacers done in such a way that it appears to be inlay work. The whalebone shaft has diamond etching then transcends to some spiral carving which resembles the tusk of the Narwhal and then back to the diamond checkering. It ends with about 5" of plain uncarved surface and attaches to a very small brass ferrule-H. 2 1/2" x 1 1/4", O.L. 35 1/8"

\$4,000-\$6,000





96.



96. *Nautical Ivory*

Ca. 1850-A nice "hands on" carving is represented in the handle of this nautical cane. It has a silver and brass collar and a very nice symmetrical bone shaft with original patina-H. 2 7/8" x 1 1/4", O.L. 36 1/4"

\$2,000-\$3,000

97. *Silver Dress*

Ca. 1890-This silver and acid etched handle is a wonderful presentation of a Continental silver shop. It is marked 900 silver and has an unreadable hallmark. The shaft is a very sturdy ebony and it has a brass and iron large ferrule-H. 4" x 4 1/2", O.L. 36"

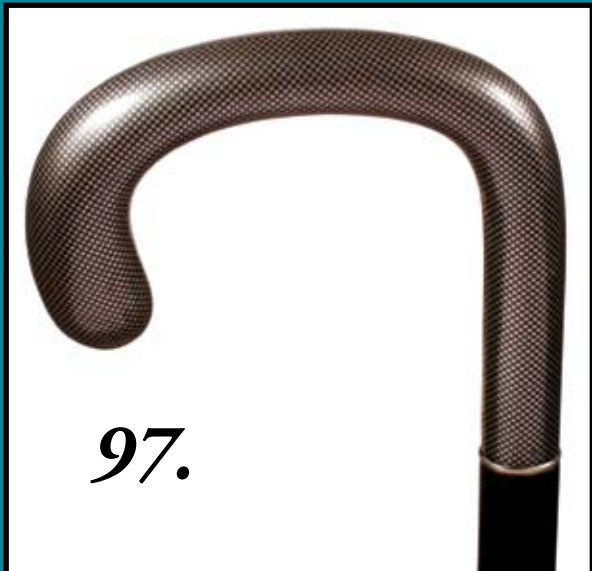
\$600-\$1,200

98. *Ebony and Ivory*

Ca. 1920-This is a very nice Deco dress cane which has an oval handle and an oval ebony shaft. It has a silver medallion inlaid in the top and a horn ferrule-H. 7/8" x 1 3/8", O.L. 35 7/8"

\$300-\$500

98.



97.



99. *Lighter System Stick*

Ca. 1920-A sterling lighter system stick which is featured on page 327 of "Canes in the United States" by Catherine Dike. It has an ebony shaft and a bi-metal ferrule. H. 3"x 1/2", O.L.- 36"-
\$500-\$1000

100. *Important Inuit Presentation Cane*

Ca. 1860-A very rare example of Native work, using both wood and narwhal. The maple wood handle is attached by four pegs to a 22" narwhal tusk. The tusk is inscribed with red resin and dyed baleen inserts. The 12" handle also has turnings, natural baleen, red resin and inlaid dyed blue baleen dots. The top of the interesting pommel handle also has four red resin dots which are connected by baleen lines. Ex-Collection of the First People's Museum of the American Indian- H. 1 1/2" x 1 3/4", O.L. 34 3/8"-
\$3,000-\$5,000

99.



100.





101.



101. Jefferson Folk-Art

Ca. 1885-This is a very fine example of one of the Thomas Jefferson folk-art canes. It has a very rich original patina and a copper ferrule-O.L. 35 5/8"-
\$1,000-\$1,500

102. African American Occupational

Ca. 1930-This unusual cane has a pewter bust of a gentleman who is wearing an early hard hat. It has a curved, natural grown handle attached to a shaft of the same wood. According to the wear on the bottom of the cane, it never had a ferrule-H. 2 1/2" x 2 7/8", O.L. 33 1/2"
\$400-\$600



102.

103. Ivory Dress

Ca. 1860-A medium size ivory dress, malacca shaft and a 2" horn ferrule-H. 1 3/4" x 3 1/8", O.L. 36 3/8"

\$200-\$400

104. Gold Dress

Ca. 1920-A very unusual, checkered and inscribed, Deco handle. The handle has two French proof marks. A stout ebony shaft which is also signed "Made in France" and a horn ferrule. The handle has tested at least 14K gold-H. 2 1/8" x 1 1/8", O.L. 35 7/8"

\$800-\$1,200

105. Historical Cane

Ca. 1900-The brass handle is stamped "Old Long Bridge". The shaft is a rich oak which was probably part of the bridge. It has no ferrule and never did-H. 1 1/8" x 7/8", O.L. 36 1/8"

\$200-\$300

106. Early Gold Dress

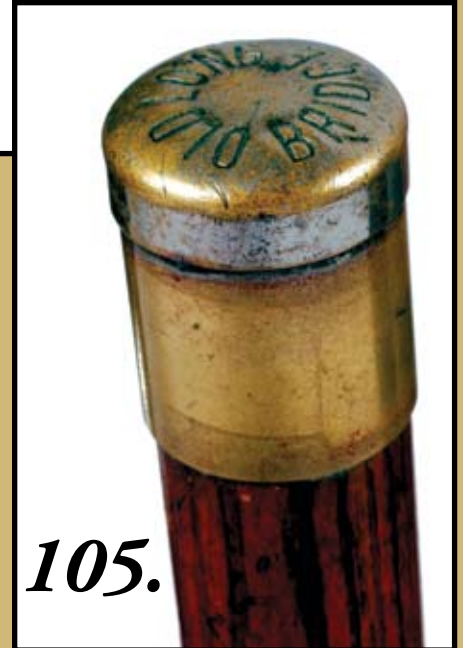
Ca. 1820-A very nice period hexagonal gold handle with the initials "J. M." inscribed on the top. There is also a finely engraved cross with three stars. The cane has large gold triangular eyelets, malacca shaft and a 2 1/2" brass ferrule. The gold has been tested to be 14K or better-H. 1 5/8" x 1 1/4", O.L. 33 1/4"

\$800-\$1,200

104.



103.



105.

106.





107.

108.



107. Gold Dress

Ca. 1880-This massive gold filled cane by "R.F.S. and Company" is a presentation from the Columbia Court in Dixon Illinois to a Reverend F. Lunde. This is a nice handle with a few dings. A massive ebony shaft and a bi-metal ferrule-H. 2 3/4" x 1 3/4", O.L. 36"

\$400-\$600

108. 14K Dress

Ca. 1915-A signed 14K pommel handle, rich snakewood shaft and 1 1/2" metal ferrule. The cane has minor engraved decoration on the top-H. 1 7/8" x 1 1/8", O.L. 35 7/8"

\$500-\$1,000

109. Ivory and Silver

Ca. 1885-This is a very finely carved ivory handle. It has two silver end caps, one inscribed "Henry Locks Dallas Texas", a very ornate signed American Victorian collar, an ebony shaft and a horn ferrule-H. 2 3/4" x 4 3/8", O.L. 36 5/8"

\$500-\$1,000

109.



110. Gold Dress

Ca. 1897-Massive gold filled handle made by Simmons with very ornate work and an inscription which states "Presented to James B. Brown by the Employees of the Boston Store Dec. 4th 1897". It is in near mint condition with a massive ebony shaft and a bi-metal ferrule-H. $2\frac{3}{4}" \times 1\frac{3}{4}"$, O.L. $35\frac{5}{8}"$

\$300-\$500

**111. Music Stand
System Stick**

Ca. 1860-A very unusual musicians stand which is all original. It has all original brass fittings and handle and an original patina on the wood. John Phillips Sousa would be proud of this one-H. $1\frac{3}{8}" \times 1\frac{5}{8}"$, O.L. $35\frac{1}{4}"$

\$1,000-\$1,500

112. Bakelite Glove Holder

Ca. 1935-A carved two color glass eyed dog with an orange bakelite hat and collar. The mouth will open and close by the press of the button underneath the lower jaw. The hardwood shaft is done in suite with the carving of the dog. It has a metal ferrule and it is in very fine condition-H. $1" \times 1\frac{1}{4}"$, O.L. $35\frac{7}{8}"$

\$500-\$1,000



110.



111.



112.





113.



115.



113. Container System Stick

Ca. 1900-The handle is a round brass compartment with a latch and a small hinge. It has a brass collar, a stepped Partridge wood shaft and a bi-metal ferrule-H. 1 1/8" x 1 3/8", O.L. 36 1/4"

\$300-\$500

114. Silver Semi-Nude

Ca. 1885-A nice example of Leda and the Swan. The handle has very fine casting, an ebony shaft and a brass ferrule-H. 3 1/2" x 3 1/4", O.L. 35 1/4"

\$800-\$1,200

115. Ivory Folk-Art

Ca. 1880-An ivory ball with inlaid shell, and a baleen and ivory spacer. It is a snake carved mahogany shaft with pewter eyes and a small pewter ferrule-H. 1 3/8" x 1 3/4", O.L. 33 1/4"

\$800-\$1,200



114.



116. Historical Ivory Knob

Ca. 1843-A well carved ivory handle with a coin silver presentation collar inscribed "The Whig Members of the Legislature to Lewis Bradford Esq. March 25th 1843". It has two silver eyelets with chain, a honey malacca shaft and a 3 1/2" scribed, brass ferrule-H. 1 1/2" x 1 5/8", O.L. 35 5/8"

\$1,000-\$1,500

117. Ivory Basket

Ca. 1880-A very finely carved basket of various flowers, a gold plated silver collar, exotic shaft and a bone ferrule-H. 2 1/8" x 2", O.L. 34 3/4"

\$1,000-\$1,500

118. Ivory Jester

Ca. 1870-A uniquely carved ivory jester in his hat with one eye closed and his tongue sticking out. The handle appears to be signed but is unreadable. The twig spur shaft retains it's original patina and it has no ferrule but heavy wear on the tip-H. 2 1/8" x 3", O.L. 36 1/8"

\$800-\$1,200

116.



118.

117.





119.

119. Ivory Scarab

Ca. 1880-A nice pommel handle with deep carving, massive malacca shaft and an ivory ferrule-H. 2 5/8" x 1 7/8", O.L. 34 1/2"

\$600-\$1,200



121.

120. Umbrella System Stick

Ca. 1910-A very fine example of the telescoping shaft that has a very rich black lacquer. It retains it's original cover of the umbrella within the shaft and appears to have never been opened. The large brass collar is signed with an unreadable touch mark and it has a metal ferrule-O.L. 35 3/8"

\$400-\$600

120.



121. Silver-plate Dress

Ca. 1890-A nice firm and decorative handle with a hardwood shaft and a bi-metal ferrule-H. 2 1/2" x 4 3/4", O.L. 35 1/2"

\$200-\$300



122.

122. Whittler's Masterpiece

Ca. 1886-Never before have we seen such fine carving on the shaft of a cane. This is a Presentation of the Bellevue Community Hospital of all of the professors and the students of that class. Many of the professor's departments are carved into the cane after their name. There are well over a hundred names carved and readable on the shaft of the cane. The cane has a two piece stag handle and a stag ferrule. Once this cane is in your hands, you too will see how remarkable this carving is-H. 2 3/8" x 4 1/4", O.L. 35"

\$1,500-\$2,500



123. Ivory Horse

Ca. 1875-This ivory horse could have belonged to some carnival owner. The carving is done much in the style of the German carver Denzel, who carved many fine carousels. It has a very ornate belt and buckle collar with engraved designs, hardwood shaft and a bi-metal ferrule-H. 1 3/4" x 3 5/8", O.L. 33 3/8"

\$800-\$1,200



124.

124. Spanish Religious Cane

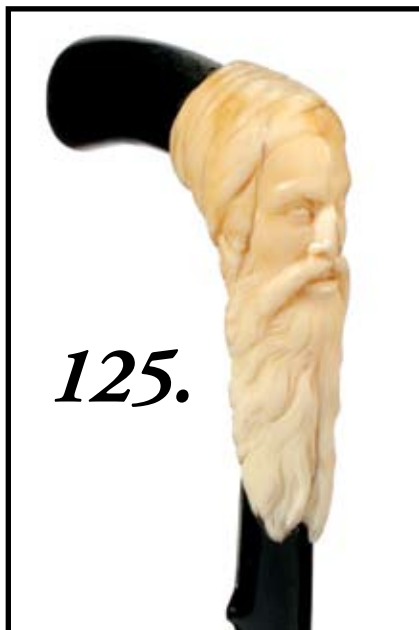
Ca. 1825-A finely done Vera type cane with three silver collars, a hand engraved silver handle and a sling with a chain and a cross. The shaft is Spanish oak and it has a 5 1/2" metal ferrule-H. 1 3/4" x 7/8", O.L. 38 1/8"

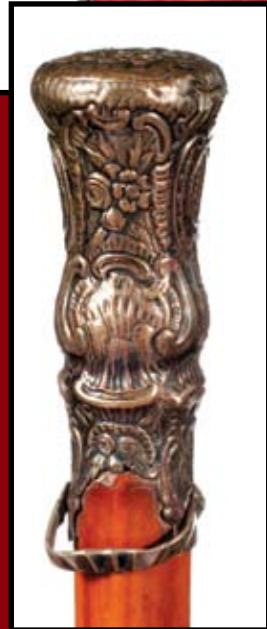
\$700-\$1,200

125. Ebony and Ivory

Ca. 1880-A very finely executed ivory portrait which has been carved to surround a very bright and brilliant, ebony twig spur shaft. The patina on the ivory portrait is original and it has a worn bi-metal ferrule-O.L. 33 3/4"

\$1,500-\$2,500





126.



127.

126. Silver Court Cane

Ca. 1760- This cane has a very ornate silver handle with flower and leaf designs. The silver bail is original with cast nails and the shaft is a very rich honey mallacca. The original 5 1/4" iron ferrule is also original to the cane-H. 4 1/2" x 13/4"-O.L.-46"

\$2000-\$2500

127. 14K Dress

Ca. 1920-A signed 14K handle made by Reid. The shaft is a very rich snakewood and it has a bi-metal, undersized ferrule-H. 1 1/2" x 7/8", O.L. 35 1/8"

\$500-\$800



128. Massive Silver Dress

Ca. 1880-A very unique massive handle by Simons. It is signed Sterling and has alternating panels on it's lower edge. The handle has an old English engraving on the top. The diameter of the massive shaft is an 1 ½". It has a worn metal ferrule-H. 3 1/8" x 2 ¼", O.L. 33 ¾"

\$500-\$1,000

129. Ivory and Silver Gator

Ca. 1886-As far as gators go, this is probably one of the best and most unique that we have offered. The gator is carved full length on the top of the ivory crutch handle. Silver filigree work, which is hand done, is overlaid throughout the handle. It has a patent date of January 5th 1886 inscribed above the silver collar. The cane has a very rich oak shaft and a large bi-metal ferrule-H. 2 ½" x 4 ½", O.L. 36 5/8"

\$1,500-\$2,000

130. Ivory Automation

Ca. 1880-A very uniquely carved portrait of a gentleman with a large mustache. On the rear of the handle there is an ivory knob and by depressing it the mouth and goatee go up and down. The pupils of the eye appear to be enamel. It has a fluted brass collar, a stepped hardwood shaft and a 1 ½" brass ferrule-H. 2 7/8" x 1 ¾", O.L. 33 3/8"

\$1,000-\$1,500



128.



129.



130.





131.



132.



133.

131. Silver Dress

Ca. 1885-A coin silver pistol grip handle with Continental hallmarks, honey malacca shaft and a 2" horn ferrule-H. 3 3/8" x 1 3/4", O.L. 35 3/4"

\$300-\$500

132. Carved Asian Ivory

Ca. 1880-A deeply carved varmint is slipping up behind a well carved toad to take a bite out of his rear end. It has an ornate ivory collar, rich malacca shaft and a metal ferrule-H. 2 7/8" x 1 7/8", O.L. 36 7/8"

\$500-\$1,000

133. Double Automation, Joseph E. Levin Cane

Ca. 1930-Polychrome face with tongue and eyes that move when the lever is depressed. It was purchased from the estate of the movie mogul. The ferrule on this cane has been replaced to bring the cane back to height. Most of Mr. Levin's canes, due to his disability were cut off and rubber tips added. It has a gold collar with ebonized shaft-O.L. 35"

\$500-\$700

134. Carved Ivory Skull

Ca. 1890-Carved ivory skull which has ebony eyes and an metal collar. The bamboo shaft has five very nicely carved dancing skeletons and is signed in oriental characters. There is a brass ferrule-H. 1 ½" x 1 5/8", O.L. 33 5/8"

\$500-\$1,000

135. Ivory Pique

Ca. 1790-This is a fine example of the genre. Piqued into the handle are circles, flowers and geometric designs. The top has a piqued flower blossom with six sides and the collar is a scalloped coin silver attached to a massive malacca shaft with handmade brass nails. It has a 2 ½" saw tooth brass and iron ferrule. The handle has a pair of lanyard holes which are circled by a silver pique work which are encompassed by a six-sided flower much like the top. This is a nice original cane-H. 4" x 1 ½", O.L. 38"

\$3,000-\$5,000



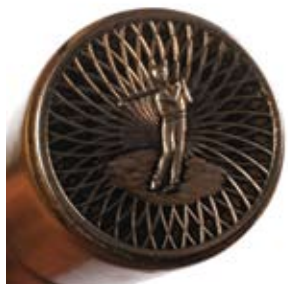
134.



135.



137.



138.



139.



136.



136. Catlinite Folk-Art

Ca. 1880-The handle is a one-piece carved pipe stone and it is attached to a four-sided oak shaft. The polychrome black rattle snake with iron eyes wraps around the center of the cane. This cane is probably of Native American Ohio Valley provenance. It has a very small copper plate on the bottom of the shaft-H. 3 1/8" x 3 1/8", O.L. 39"

\$800-\$1,200

137. Golf System Stick

Ca. 1925-The handle has a silver medallion of a golfer attached to the brass section. It can be unscrewed and within the shaft there is a space for the storage of golf tees. There is a brass collar, a sturdy oak shaft and a 4" ferrule which is cast in the shape of a golf driver-H. 1 1/2" x 1", O.L. 35 1/2"

\$500-\$1,000

138. Glass Parade Stick

Ca. 1880-A very nice large blown hollow glass parade stick with a bulbous 3" handle. It has a white pearlized tint with threads of yellow, black, bluish green and red running throughout. The cane also has no chips or breaks-O.L. 5' 5"

\$700-\$1,200

139. Tripod System Stick-

Ca. 1860- An American walnut shaft with forged brass collars and inserts. The ferrule is in the shape of a plum bob and the legs are attached by early hinges. It also has a brass collar. The ferrule is 4 1/2" -O.L.- 39"

\$400-\$600

140. Tripod System Stick

Ca. 1910-This system stick is all metal and forms a tripod for either a camera or a surveying instrument. The metal collar is signed in script "Dresden". The entire cane has a black painted finish and a spike metal ferrule. It is fully operational-H. 3 1/2" x 4 3/4", O.L. 36 1/2"

\$400-\$600

141. Silver Plate Shoe

Ca. 1880-A very well crafted and cast high button shoe which has a Victorian sock done in suite with the shoe. By close inspection of the tip you can see two not so stately toes sticking out. It has an ebony shaft and a black horn ferrule-H. 3 3/4" x 4 1/4", O.L. 33 7/8"

\$300-\$500

142. Folk-Art Dog

Ca. 1880-One piece carved burl branch with two color bulging eyes. It has original patina and average wear and tear and a bi-metal ferrule-O.L. 35 7/8"

\$300-\$500

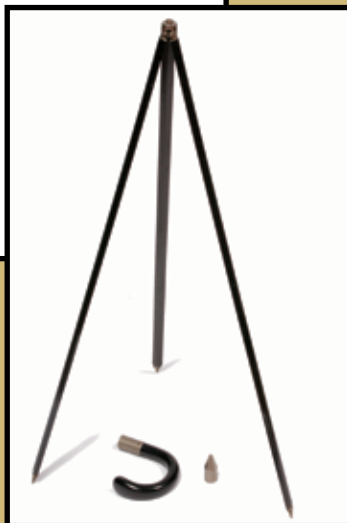
143. Carved Wooden Horse

Ca. 1885-A one-piece carved handle, a copper collar, hardwood shaft and a worn, copper ferrule-H. 10 3/4" x 3 1/4", O.L. 36 1/8"

\$500-\$700



140.



141.



143.



142.





144.



144. Mystical Creature

Ca. 1885-A signed sterling handle attached to a crutch handle and a carved faux briar wood shaft. Shaft appears to be an American hardwood and it has a bi-metal ferrule-O.L. 35"

\$300-\$500

145. Ivory Knob

Ca. 1810-A massive ivory knob which is attached to a large cork shaft by a coin silver collar. The shaft has two brass eyelets and a 2 3/4" brass and iron ferrule. This is a prime example of this early genre-H. 1 3/4" x 2", O.L. 36"

\$1,000-\$1,500

146. Carved Gator

Ca. 1930-A carved exotic wood gator with two color glass eyes. The opening of the mouth could be a cheroot holder. It has a bi-metal ferrule and a fully carved shaft-O.L. 36"

\$300-\$400



145.



146.

147. Pewter Wolf

Ca. 1875-A cast one-piece wolf which is attached to a three-piece ebony shaft which is a suitcase system stick. It has a milk bottle ferrule and is in original condition-H. 5 1/8" x 3 3/4", O.L. 35 3/8"

\$300-400

148. Ivory Dress

Ca. 1895-A round ivory knob which is attached to a large oval horn ferrule. It has an ivory spacer, a pair ivory eyelet, a burnt and paint decorated oval shaft and an ivory and horn ferrule-H. 2 5/8" x 1 1/2", O.L. 34 1/8"

\$200-\$400

149. Carved Horn

Ca. 1890-A nicely carved horn handle with a large silver collar which has British hallmarks and a New York Presentation. It has a bamboo lacquered shaft and a horn ferrule-H. 1 5/8" x 5 1/2", O.L. 38"

\$400-\$600

150. Barrel Bunge System Stick

Ca. 1905-Commonly used in the wine or spirits industry. Beaded brass collar, hardwood shaft and black horn ferrule-H. 8 1/4" x 4", O.L. 36 1/2"

\$200-\$400



147.

148.



149.



150.





151.

151. Folk-Art Dog

Ca. 1900-A very well carved dog with two color glass eyes and a fez upon his head. It has a chip carved collar which has a small piece of abalone for a center button and a metal collar. The shaft is honey malacca and it has a horn ferrule-H. 4 1/4" x 2 1/4", O.L. 36 3/8"

\$400-\$500

152.



152. Revolutionary Era Stag Horn

Ca. 1780-Coin silver collar, silver eyelets, and silver cartouche, stepped hardwood shaft with correct 18th Century brass ferrule-H. 3" x 1 3/4", O.L. 34 1/4"

\$400-\$800

153. French Porcelain Dress Cane

Ca. 1880-Gold moriage overlay, extremely detailed flying cherubs picking roses, ornate gold upper collar, gold lower collar, stepped hardwood shaft, and a black horn ferrule-H. 5 1/8" x 7/8", O.L. 38"

\$600-\$800

153.

154. Asian Tortoise

Ca. 1870-A carved shell oriental figure with umbrella and fan. It has a small split ivory collar, a honey bamboo shaft and a horn ferrule. The umbrella is missing part of the front portion. This is an unusually large carved portion of shell-H. 2 ½" x 1 ½", O.L. 35 ¾"

\$400-\$800

155. Silver and Ivory

Ca. 1875-A Victorian, American Dress cane signed sterling. It has two ivory collars and a partial, hexagonal shaft which is a nice exotic wood and also it has a brass ferrule-H. 3 ½" x 2 ½", O.L. 33 ½"

\$400-\$600

156. Gardener's System Stick

Ca. 1860-A crutch handle twig spur shaft with an early hand forged cutting apparatus for a ferrule-O.L. 35 ½"

\$400-\$500

157. Ornate Silver Dress

Ca. 1880-A silver hexagonal handle done in high relief of various hunt scenes with men, ladies and children. It also has various animals and very young children involved with playing games. It has a very rich snakewood shaft and a metal ferrule-H. 2 ½" x 1 ½", O.L. 37"

\$800-\$1,200



154.



155.

156.



157.



158.



159.



160.



161.



162.



158. Spiral Ivory Dress

Ca. 1890-Beaded sterling adornments, silver collar, ebony shaft, black horn ferrule-H. 5 1/4" x 7/8", O.L. 36"

\$400-\$600

159. Silver and Horn Dress

Ca. 1865-Possibly Rhino hallmarked British sterling cap and collar, honey malacca shaft, correct brass and iron ferrule-H. 2 1/2" x 4 1/4", O.L. 36 1/4"

\$400-\$600

160. Stained Ivory Dandy Dress

Ca. 1870-Hallmarked gold collar, possibly French, snakewood shaft, white metal and iron bi-metal ferrule-H. 1 1/8" x 2 1/2", O.L. 35 1/8"

\$300-\$500

161. Hand Carved Dog Head

Ca. 1890-Hardwood handle dog head, two color glass eyes, marked silver-plate collar, partridge wood shaft, horn ferrule-H. 5 3/8" x 4 3/4", O.L. 36 1/2"

\$200-\$300

162. Opium Scale System Stick

Ca. 1850-Iron, hand forged hook, brass mechanicals, inlaid pewter and brass characters and a partridge wood shaft which has brass measurement segments-H. 2 1/8" x 4 1/8", O.L. 37"

\$500-\$1,000

163. Cigarette System Stick

Ca. 1910-Massive Malacca crook handle which is signed France. It has a spring mechanism and a roller wheel. The cane has an original Malacca shaft and a horn ferrule-O.L. 35 ½"

\$800-\$1,200

164. Double Horse Head Ivory

Ca. 1880-Ivory horse heads sporting glass eyes, hallmarked 18K gold horse collars and also has an 18K gold shaft collar, highly carved exotic wood shaft, brass ferrule. This cane is pictured on page 279 of "Canes in the United States by Catherine Dike"-O.L. 36 5/8"

\$800-\$1,200

165. China Man Folk

Ca. 1850-Intricately carved Asian man, correct two color glass eyes, brass collar, honey malacca shaft with correct brass eyelets, original brass ferrule-H. 2 ½" x 2", O.L. 33 ¾"

\$300-\$500

166. Historical Silver

Ca. 1852-A hexagonal silver handle with the presentation "U.S. Consul at Singapore to J.P. Giles U.S. Navy January 1852". It has a rich malacca shaft and a black horn ferrule-H. 1 1/8" x 1 1/8", O.L. 36 ¼"

\$500-\$700



163.



165.



164.



166.





167.

167. *Semi Nude Silver*

Ca. 1890-A signed 800 silver handle which depicts as reclining lady wrapped in a lace gown. Probably a bludgeon stick. This Continental cane has an ebony shaft and a bi-metal ferrule-H. 3 1/4" x 4 1/2", O.L. 40 5/8"

\$400-\$600

168. *Flick Stick*

Ca. 1860-A hexagonal buffalo handle with an unusual 7" protruding blade. The cover for the pike blade is hinged brass. It has a large half bark malacca shaft and a horn ferrule-H. 1 1/8" x 1 1/4", O.L. 34"

\$800-\$1,200

169. *Mythological Carved Wood*

Ca. 1880-This carved wood handle has the face of a man with a hood of an owl. It has two color glass eyes, small metal collar, an exotic wood shaft and a brass ferrule-H. 3 1/4" x 2", O.L. 39 1/2"

\$500-\$1,000



169.



168.



**170. Important
Napoleonic Cane**

Ca. 1850-A most unusual hidden compartment cane. The two-piece ivory handle is quite symmetrical and by unscrewing the top and removing it a 1 ½" bronze gold dore' statue of Napoleon with arms crossed and a sword exposed. The figure is a nice early sand casting done by a quality work shop. It has a very rich snakewood shaft and an ivory ferrule-H. 4" x 1", O.L. 35 ½"

\$1,500-\$2,500

**171. Jacksonville
Style Carving**

Ca. 1890-A stag handle carved with a full length gator which is attacking a carved African American figure with a wood, folk-art head and feet. It has a signed American sterling collar with scrolls both top and bottom, a twig spur shaft and an original bi-metal ferrule. This cane appears on page 277 of "Canes of the United States by Catherine Dike"-H. 2 ¼" x 5 ½", O.L. 35 ½"

\$1,500-\$2,500



170.

171.





172.

172. Bone Stiletto

Ca. 1880-A prime example of a defensive stick with a carved bone primate with two color glass eyes and a carved horn hat. On the back side of the cane there is a horn push button and by pushing the button a 3" partially engraved blade appears. It has a decorated ivory and bone ferrule, a natural bamboo shaft and a medium, strong spring-H. 3 1/2" x 1 3/4", O.L. 35 3/4"

\$2,000-\$3,000



173.

173. Tippler Stick

Ca. 1921-A sterling pommel knob which is engraved as golden wedding anniversary which unscrews and a 2 foot glass reservoir with original cork may be pulled from the exotic wood shaft. This is a real dressed up example of this genre and it has a horn ferrule-H. 1 1/4" x 1 3/8", O.L. 35 1/2"

\$400-\$600

174.



174. Ivory Dress

Ca. 1830-This ivory knob has a coin silver disk inlaid in its top with the initials "T.W." It has a most unusual snakewood shaft which has spiral carving for about 5", two hand engraved oval coin silver eyelets and a 4" bi-metal ferrule-H. 1 1/2" x 1 1/4", O.L. 34 3/4"

\$500-\$1,000



175.

175. Bone Fraternal

Ca. 1870-A pair of hands are carved for the handle which are intertwined in a hand shake. It has a very rich malacca shaft and a bone ferrule-H. 4" x 1 1/8", O.L. 36 1/8"

\$500-\$1,000



176. Carved Bone Toad

Ca. 1920-A very nicely carved toad with enamel eyes, exotic wood shaft and a bone ferrule. The handle appears to have been repaired professionally at a separation of the collar at one time-H. 3 7/8" x 1 3/4", O.L. 36"

\$500-\$1,000

176.



177. Ivory Flick Stick

Ca. 1870-A carved ivory swirl handle and when the blade is exposed a very highly decorated 6" blade is seen. The blade itself is partially serrated and has many stars and flowers engraved upon it. It has a honey malacca shaft and a horn ferrule. The mechanism works precisely on this stick-H. 2" x 1 5/8", O.L. 35 7/8"

\$1,000-\$1200



177.





178.

178. Ivory Skull Automation

Ca. 1890-A triple automation, which by depressing the button in the rear the two color eyes bulge, the lower jaw falls and the blood red tongue extends. It has an ivory inked and scribed fluted collar, an ebony shaft and a bi-metal ferrule. The cane is in fine working condition-H. 1 7/8" x 2 1/2", O.L. 33 7/8"

\$1,500-\$2,500

179. Dumonthier Gun Cane

Late 19th Century-This shot gun cane is in very fine condition. It has a stag handle with a very rich patina and an original Damascus steel ferrule. The chamber is well signed and proofed and appears to be a 9 gauge edition of this genre. It has a collar which you twist and the trigger is exposed, a very rich malacca shaft and is in fine working condition-H. 2 1/2" x 4 5/8", O.L. 36"

\$1,200-\$1,800

180. Wine Testing System Stick

Ca. 1900-A fine two-piece crutch handle which contains a 6 piece brass mounted cask measurement tool. It is in very fine condition. The cane is hard rock maple and it has a brass ferrule-H. O.L. 32 3/4"

\$500-\$1000



179.

180.

181. French Gun Cane

Late 19th Century-This an all metal rim fire example. It has its original pulling tool as the ferrule. This is a near mint example of this type of cane. It has a faux tortoise shell paint decorated handle and a metal collar-O.L. 35 7/8"

\$1,200-\$1,800

182. Percussion Gambler's Pistol

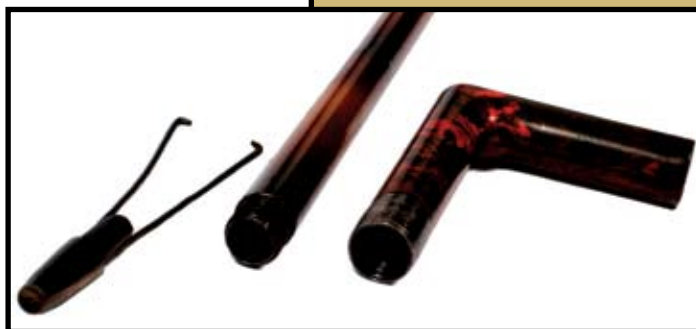
Ca. 1860-A very rare, plunger style gambler's pistol. It has a fluted 6" barrel which is signed "Horn". The barrel is also marked patent and is in very fine condition. The ornate silver collar has a partially readable hallmark which makes us think it is Belgium made and the handle is a very rich yellow horn. There is a 2nd plain silver collar, a honey malacca shaft and a horn ferrule. The mechanism is in fine working condition-H. 2" x 4 3/4", O.L. 36 1/2"

\$2000-\$2,500

183. Multi Faceted Agate Dress

Ca. 1915-The handle is completely faceted as if it were a serious gem stone. It has a gold collar, an ebonized shaft and a bi-metal ferrule-H. 1 3/8" x 1 5/8", O.L. 35 3/8"

\$400-\$600



181.



182.



183.



184.



185.



184. Carved Dog

Ca. 1910- A carved dog with two color glass eyes, metal collar, mallacca shaft and a bi-metal ferrule-H. 4" x 3", O.L.-34"

\$200-\$400

185. Carved Burl Dog

Ca. 1880-A nicely carved dog with a glass eye. It is carved in profile to a twig spur handle and a partridge wood shaft and a bone ferrule-H. 5 1/4" x 4 5/8", O.L. 36"

\$200-\$400

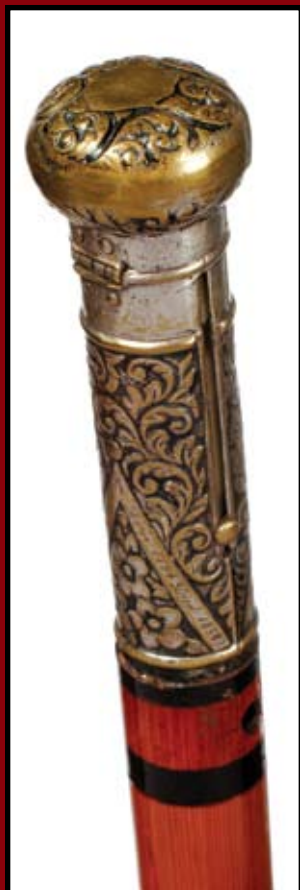


186.

186. Rare Historical Presentation Double System Stick

Mid 19th Century-This stick has a push-up handle and also the shaft is a very unique bamboo fishing pole with a cork and brass ferrule. The first presentation on the handle is "Sumida Japanese to Commodore M. C. Perry, born 1794 died 1858, February 21st 1855". The handle is also marked patent April 5th 37. A second presentation which appears on the upper collar of the cane is "Robert J. Veil to Judge Conley 1916". The handle is an early silver plated brass and both systems work on this cane-H. 4" x 1 1/2", O.L. 36 5/8"

\$2000-\$3000



187. Carved and Painted Dog

Ca. 1920-A carved dog with two color glass eyes with most of the original paint remaining. It has a brass collar, an oak shaft and a horn ferrule-H. 2 3/8" x 2", O.L. 35 1/4"

\$300-\$500

188. Carved Bird

Ca. 1880-An unusual stylized carved bird with two color glass eyes, metal collar, bamboo shaft and a metal ferrule-H. 1 3/4" x 3 1/2", O.L. 35 1/2"

\$300-\$500

189. Carved Dog

Ca. 1880-An unusual carved one piece bamboo cane with two ivory eyelets. It has no ferrule and is very well executed-O.L. 39 1/4"

\$200-\$300

190. Butterscotch Bakelite

Ca. 1930-A very nicely carved large piece of bakelite with two color glass eyes, a small gold collar, a large malacca shaft and a horn ferrule. There are a couple of small dings on the handle-H. 2 3/4" x 2 3/8", O.L. 35 1/4"

\$200-\$400

191. Damascene Dress

Ca. 1880-A very nice example of this style of work done with dragons flowers and leafs. It has an ebony shaft and a horn ferrule-H. 3 1/8" x 1 3/4", O.L. 36 1/2"

\$400-\$600



187.

189.

188.



191.

190.



192.



192. Carved Dog

Ca. 1910-This French carved handle has two color glass eyes and a pair of hallmarked, 9 ct. gold collars. It has a spool carved hardwood shaft and a brass ferrule-H. 2 3/4" x 1 7/8", O.L. 33 3/8"

\$300-\$500

193. Rare "Spitting" Ivory System Stick

Ca. 1875-This is the prime example of this genre. It has a very finely carved ivory handle of an Asian gentleman with a silver plated pony tail. When the pony tail is pumped liquid is forced out of the mouth for about 8 feet. This cane is signed on the rear of the head by the carver. It has a monogrammed and hallmarked silver collar. This rare and unusual Continental stick has a rich patinated bamboo shaft and an original worn brass ferrule. The mechanism is in fine working condition and all of the tubes and reservoirs have been professionally cleaned-H. 2" x 2", O.L. 36 5/8"

\$4,000-\$6,000



193.



194. Anheuser-Busch Eagle

Ca. 1900-A massive and well cast silver plated eagle handle, a signed Busch brass collar, hardwood shaft and a 2" metal ferrule-H. 3 1/2" x 4", O.L. 41"

\$500-\$1,000

195. Celebrity Cane

Ca. 1920-An ornate silver plated handle with blue cabochons which was purchased from the Sammy Davis Jr. estate auction. It has a signed sterling collar, a signed Oldwin Austria maple shaft and a horn ferrule-H. 1 7/8" x 1 1/2", O.L. 35 3/4"

\$500-\$1,000

196. Celebrity Gold Dress

Ca. 1850-This signed 18Kt gold cane was purchased from Butterfield and Butterfield at the estate auction of Sammy Davis Jr. It has Continental makers marks and hallmarks. It has a rich malacca shaft and a 2" brass and metal ferrule. The handle needs restoration due to some minor dents and divides-H. 1 7/8" x 1 1/4", O.L. 35 7/8"

\$400-\$800

197. Porcelain Cane Stand

Ca. 1890 -Signed GDD and probably French. A very unique stand of this genre. Height 24" Diameter 9"

\$400-\$800

198. Satsuma Cane Stand

Ca. 1880- This is a near mint example of this type of porcelain. It show minor wear to the gold decoration. Height 24" Diameter 9"

\$400-\$800



195.

194.

196.



197.

198.



Now we will sell over 200 canes to the in-house bidders from the collection.



Kimball M. Sterling, Inc. (TFL-1915)
125 West Market Street Johnson City, Tennessee 37601
kimballsterling @ earthlink.net
423.928.1471

Member National Auctioneers Association
© Copyright 2007 Kimball M. Sterling, Inc.

Photography by James Price
Catalog Design by KT Designs Inc. - www.kristaft.com