

KIMBALL AND VICTORIA STERLING PRESENT

LIFETIME

CANE COLLECTION

OF

Henry Foster



SATURDAY,
DECEMBER 6TH
11:00 A.M.



I began collecting canes and walking sticks in 1972 when I bought, for \$700 at an auction in New York City, one lot consisting of 35 canes. I now had a collection and the objects piqued my interest to learn more about the canes I had just acquired. I began looking for canes, particularly ivory handled pieces, wherever I travelled. At antique shows, shops and auctions I purchased canes whenever I found them. To my eye, they were small, beautiful works of art.

At the time, I was the owner of a home heating oil business in Brooklyn and earning a good income. I was unmarried and the prices of canes were much lower then than they are today. Over the next 15 years I was able to purchase over 200 good quality ivory handled sticks. I met my wife to be, Margaret, in 1987. She loved the ivories but thought we had quite enough canes and I ceased my quest to further increase my collection. We were married in 1989 and the next year we sold the company and moved to Miami.

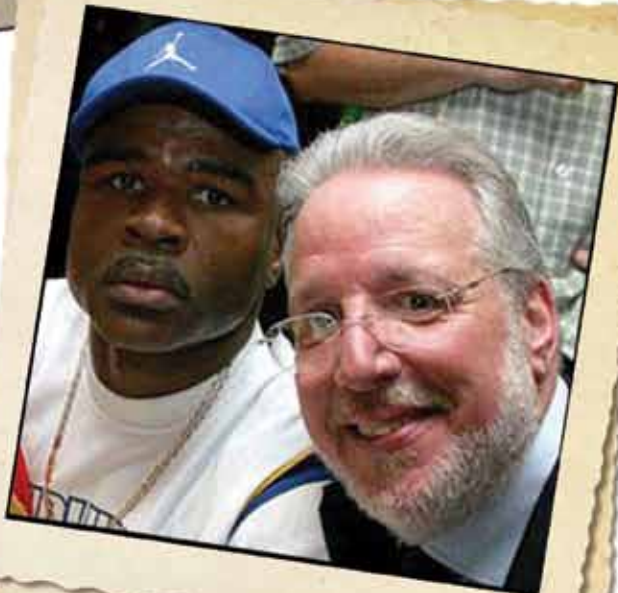
We bought a 4000 square foot home with lots of room to display our canes. I was a boxing manager and travelling internationally with my fighters. I began buying canes again around 1992 but limited my purchases to nauticals and elegant dress canes.

In 2012 I slowed down on my boxing business and had some health issues. We sold our home in Miami and relocated to a 1900 square foot house in Boca Raton, Florida. The canes went into storage. I contacted you and now you've got 546 canes of ours to sell for us.

It's difficult to let go of a collection assembled over almost 45 years, but all things must pass. I hope we get great prices and that the new owners appreciate these works of art as much as we did while acquiring and owning them.

Sincerely,
Henry Foster

Henry Foster with his World
Champion Glen Johnson



KIMBALL AND VICTORIA STERLING PRESENT

LIFETIME

CANE COLLECTION

OF

Henry Foster

Live on the internet at
LIVEAUCTIONEERS.COM

Two Time Winner of Best of Show
from the National
Auctioneers Association

Kimball M. Sterling Auction Gallery
125 West Market Street
Johnson City, Tennessee 37601
[kimballsterling @ earthlink.net](mailto:kimballsterling@earthlink.net)
423.928.1471



SATURDAY,
DECEMBER 6TH
11:00 A.M.

Preview

Saturday, December 6th at 9:30 AM EST

Friday, December 5th 12:00-5:00 PM

www.AuctionAuction.com



TERMS & CONDITIONS

1. Cash or check. A 20% buyers' premium will be added to the hammer price as part of the sale price for all bidders. Internet bidders will pay 23%. We reserved the right to hold purchases until the buyers checks clears if buyer is not known by us. Bank letter of credit is acceptable.

2. Mail or phone bids are accepted; the firm may require a deposit.

3. Kimball M. Sterling, Inc. has endeavored to catalog and describe the property correctly. All property is sold as is and neither the auction company nor the consignor will be responsible for descriptions, genuineness, provenance or condition of the property. No statement in the catalog made orally at the sale or otherwise shall be deemed to be a warranty, representation, or an assumption of liability.

4. In the event of any dispute between bidders, the auctioneer shall have total discretion to determine the successful bidder, in which his determination shall be final or to re-offer and resale the article in dispute. Title of the item or items purchased by the bidder will pass at the fall of the gavel and declaration of bidder. This is not an approval auction. All measurements are approximate.

5. Principal auctioneer: Kimball M. Sterling #2467. B. Elizabeth Sterling, auctioneer # 5757. Firm Kimball M Sterling Inc. TFL-1915

6. Bidders may bid live on the Internet by visiting <http://www.auctionauction.com>. You may also view the auction at this site and bid by phone.

7. Communications:
Telephone 423-928-1471.
Fax 423-928-2816.
Cellular 423-773-4073, 423-773-4072.
Email kimballsterling@earthlink.net

8. We do not ship protected items overseas but anything else will be shipped by the UPS Store in Johnson City. We can however hold your item till you or a friend visit's the USA and you can take your items as a personal item or we can ship to a friend in the USA.

9. Kimball M. Sterling, Inc. will not be held responsible for bids received on the day of the auction, unexecuted absentee bids, phone bidders not contacted or slow Internet bids. Although we do attempt to get all bids executed problems do occur. There will be no recourse from the bidder. We will not be responsible for items left on our location for over 30 days.

10. Sale will be conducted at 125 West Market Street, Johnson City, Tennessee. 37604. Announcements day of the sale take precedence over pre-sale advertising. Any litigation that pertains to this auction will be conducted in the county of Washington in Tennessee and is agreed upon by registering for this auction.

11. Airport is the Tri-Cities Airport, which is approximately 20 miles from the gallery. Internet catalog and live bidding available at www.auctionauction.com Best Western Hotel: 423-282-2126. A very fine hotel which offers Sterling Auction a discount rate is the Carnegie Hotel 1216 W State of Franklin Rd, (423) 979-6400.

12. Please call for condition report on sale lots or email us. We do send out multiple photos by email of any lot in the auction. By registering for this auction you accept the terms.

13. Parking service is free.



1.



1. Ivory Dress Cane

Ca.1820-A German carved handle with two beautiful ladies in high relief engraved sterling coin silver collar, thick malacca shaft and a metal ferrule.

2"x4", O.L.38"

\$3,000-\$4,000

2.Ivory Dog Cane

Ca.1890-A carved ivory dog with two color glass eyes with stained spots, British coin silver collar and a metal ferrule.

H. 3"x 1 1/2"x2 1/8", O.L.35"

\$900-\$1,200

3.Ivory Lawyer's Cane

Ca.1900-A fully carved ivory handle, fluted British coin silver collar signed "J.S.&S.S.", ebony shaft and no ferrule.

H. 1 1/4"x 1 1/2"x3", O.L.38"

\$1,000-\$1,200

4.Ivory Fox Cane

Ca.1880-A carved ivory fox with beaded glass eyes with a chicken in his mouth, malacca shaft and a horn ferrule.

H. 2"x 2"x3", O.L.36"

\$1,000-\$1,200



4.

3.



2.

5.Ivory Hands On Cane

Ca.1900-A carved ivory handle of a hand holding a snake, fine detail carving, the fingers and snake, ivory collar, thick malacca shaft and a metal ferrule.

H.2 ¼"x 2", O.L.34"

\$1,000-\$4,000

6.Ivory Shepherd's Crook Cane

Ca.1880-Carved ivory crook with nice striations, snakewood shaft and a metal ferrule.

H.4"x3 ½", O.L.36"

\$500-\$700

7.Ivory Globe And Tortoise Cane

Ca.1910-An inscribed ivory globe handle which doubles as a sundial, tortoise upper plate, ornate gold-filled collar, malacca shaft and a metal ferrule.

H. 2"x2", O.L.32 ½"

\$1,300-\$1,800

5.



6.



7.





9.

9.Ivory Early American Lady Cane

Ca.1875-A unique carved portrait cane of a lady in curls wearing pearls, inlaid heart and ivory dots, spiral exotic wood shaft and a metal ferrule.
H.2"x1 3/4", O.L.35 1/2"
\$800-\$1,200

10.Ivory Three Monkeys Cane

Ca.1900-Carved ivory handle with three monkeys in various positions with beaded glass eyes, small ivory collar, malacca shaft and an ivory ferrule.
H.3"x1 3/4" -O.L.35 1/2"
\$600-\$1,000

11.Ivory Skull And Bone Cane

Ca.1900-A unique carved skull, bone and snake ivory handle carved in high relief, ivory eyes, malacca shaft and a horn ferrule.
H.3"x 1 5/8", O.L. 36"
\$1,000-\$1,500

10.



**Shown at Actual Size*

8.Massive Ivory Hound Cane

Dated 1892-A well carved ivory handle with a very large hound, coin silver presentation collar, and "From the Members of the Lick Club", thick malacca shaft and a metal ferrule.
H.5 1/2"x2"x1 1/2", O.L.36"
\$2,500-\$3,500

8.

12.Ivory Hand and Baton Cane

Ca.1900-A carved hand holding a baton with gold ends which doubles as a cheroot holder, three signed 14kt gold collars, exotic wood shaft and an ivory ferrule.

H.3"x5", O.L. 34 1/2"

\$600-\$1,000

13.Japanese Frog Cane

Ca.1890-A carved ivory frog and snake cane with a whimsical touch, probably Japanese, engraved gold-filled collar, ebony shaft and a metal ferrule.

H.3"x3 3/4", O.L.36"

\$700-\$1,200

14.Ivory Devil "Flip" Cane

Ca.1885-A carved ivory devil with a buttocks head, flipping the cane makes a red tongue extend from the mouth, coin silver collar, malacca shaft and an iron pike ferrule.

H.1 3/4"x2", O.L.33 1/4"

\$800-\$1,200

15.Ivory Skull Cane

Ca.1880-Carved ivory skull done in great detail with a snake below the neck, silver metal collar, stepped partridge wood shaft and a metal ferrule.

H.4 1/2"x2 1/2", O.L.34 1/2"

\$900-\$1,200

16.Ivory and Silver Skull

Ca.1880-A very unique ivory handle with a jewel incusted skull atop, silver metal collar is wrapped with a 3-D snake with ruby glass eyes, hardwood shaft and a metal ferrule.

H. 4 1/2"x1 1/4", O.L.37"

\$1,500-\$2,500





18.

17.

17.Ivory Skeleton Cane

Ca.1900-A carved ivory seated skeleton, fluted silver metal collar, ebony shaft and horn ferrule.

H.2 1/2"x1 1/2", O.L.>36"

\$800-\$1,200

18.Ivory Skull Cane

Ca.1880-A unique carved double skull ivory handle with two snakes, ornate silver metal collar, twig-spur shaft and a horn ferrule.

H.4"x1 1/2", O.L.33 1/2"

\$1,200-\$1,800

19.



19.Shabayama Ivory Cane

Ca.1890-A nice example of this style of Japanese work with 5 insects including a really nice dragon fly, beetles, spiders etc., handle is signed in red characters by the maker, blackened twig-spur shaft and a metal ferrule.

H. 1 1/2"x 1 5/8", O.L.33 1/2"

\$700-\$1,000

20. Optometrist Ivory Cane

Ca.1890-A carved ivory handle with a glass eye incased atop, small horn ferrule, thick malacca shaft and a horn ferrule.

H.1 1/2"x1 1/2", O.L.35 1/2"

\$500-\$800



20.

21. Ivory Skull Cane

Pre-Ban-A fossilized ivory skull, signed 14kt collar, malacca shaft and a horn ferrule.

H. 2 1/2" x 1 5/8" x 2 1/2", O.L. 35"

\$700-\$1,000

22. Ivory Alligator and Panther Cane

Pre-Ban-A unique carved handle with a gator and a panther involved in a fight, ribbed silver metal collar, ebony shaft and a horn ferrule.

H 2" x 3 1/4", O.L. 39"

\$1,000-\$1,500

23. Ivory "Amasarao" Skull Cane

Pre-Ban-A carved skull with a snake entwined around and throughout the skull, ornate gold filled collar, malacca shaft and a metal ferrule.

H. 2 1/4" x 1 3/4" x 2", O.L. 34 1/2"

\$1,000-\$1,200

24. Ivory Globe Cane

Ca. 1900-A carved and India inked ivory globe, fluted silver metal collar, ebonized shaft and a metal ferrule.

H. 1 3/4" x 1 3/4", O.L. 37"

\$1,000-\$1,200



22.

21.



23.

24.



25.

25. Ivory Lion Den Cane

Ca.1880-A unique carving of three male lions, ornate machined gold collar, pair of gold eyelets, malacca shaft and an iron ferrule.

H. 5"x1 1/2", O.L.36"

\$1,300-\$1,800

26. Ivory Steer Cane

Ca.1900-A carved ivory steer with two color glass eyes, silver metal collar, ebony shaft and a horn ferrule.

H.1 1/2"x1 3/4"x 2", O.L. 34 1/2"

\$500-\$700

27. Ivory King Arthur Cane

Late 19th Century-A unique carved example of the king in full armor with shield and sword, British coin silver collar, ebony shaft and no ferrule.

H. 5"x1 1/2", O.L. 37"

\$1,800-\$2,200

28. Ivory Automation Monkey Cane

Ca.1885-An automated handle which works by a lever in the rear of the head, both the eyes and lower jaw move, large ivory collar, thick ebonized shaft and a brass ferrule.

H. 1 1/2"x 1 3/4"x 2 1/4", O.L. 34"

\$1,000-\$1,500

27.



26.



28.



29. Ivory Frog Cane

Dated 1894-Nicely carved frog handle with two color glass eyes ornate silver collar presented to a gentleman also with a pair of gold spectacles, ebony shaft and a metal ferrule.

H. 4"x1 ½", O.L.36"

\$1,200-\$1,800

30. Ivory Skull and Hand Cane

Early 20th Century-A unique "Macbeth" style of cane with great attention paid to the hand and skull, silver metal collar, malacca shaft and a metal ferrule.

H. 2"x2"x3", O.L 34 ½"

\$1,000-\$1,500

31. Anglo-Indian Ivory Cane

Ca. 1900-A typical carving of this style, silver metal collar, exotic wood shaft and a horn ferrule.

H. 2 1/8" x 2", O.L. 37"

\$400-\$600

32. Ivory Falcon Cane

Ca. 1880-A carved hooded falcon resting upon a large fist, ornate British coin silver collar, exotic wood shaft and a metal ferrule.

H. 3 ½' x 3', O.L. 35 ½"

\$800-\$1,200

33. Ivory Cockatoo Cane

Pre-Ban-A carved head done in high relief with two color glass eyes, small ivory collar 1" ebony shaft and horn ferrule.

H. 3 ½" x 2", O.L. 36"

\$700-\$1,000



31.



30.

32.



29.



33.



34.



37.

34. Ivory "Punch" Dress Cane

Ca. 1890-A carved ivory punch with horn eyes, ornate fluted British coin silver collar, ebony shaft and an ivory ferrule.

H. 3" x 2", O.L. 31"

\$700-\$1,000

35. Ivory Nude Dress Cane

Early 20th Century-An ivory handle with a French nude Stanhope in the shaft, small gold metal collar, inlaid cartouche of RCM-1867 on the shaft and a metal ferrule.

H. 2 1/2" x 1 1/2", O.L. 35 1/2"

\$500-\$1,000

36. Ivory Eagle Cane

Pre-Ban-A large bald eagle head with two color glass eyes, detailed feather work, silver metal work, 1" ebony shaft and a horn ferrule.

H. 4" x 2" x 2 1/4", O.L. 36"

\$1,000-\$1,500

37. Ivory and Horn Skull Cane

Ca. 1890-A unique handle with a skull being clutched by silver talons, silver metal collar, hardwood shaft and a metal ferrule.

H. 2 1/2" x 3", O.L. 37"

\$500-\$800

38. Ivory Skull and Claw Cane

Early 20th Century-Another unique skull in this collection with a full feathered talon grasping the skull, silver metal collar, stepped hardwood shaft and a metal ferrule.

H. 1 3/4" x 2" x 2", O.L. 34 3/4"

\$1,000-\$1,500



36.



35.



38.

39. Ivory Skull Cane

Late 19th Century-A unique skull carving with a two piece faux bamboo segmented ivory shaft and a metal ferrule.

H. 2" x 1 1/2" x 2 1/4", O.L. 33 1/2"

\$1,500-\$2,000



40.

40. Ivory Skull Cane

Early 20th Century-A unique carved skull thumb rest "Aqvea-terrae-ignis-aeris", silver metal collar, ebony shaft and a horn ferrule.

H. 4" x 1 1/2", O.L. 34"

\$500-\$700



39.

41. Ivory Wildlife Hunting Cane

Ca. 1800-A German masterpiece carved in high relief of hounds, animals, deer, elk, antlers and much more, truly a quality museum piece, small ivory collar, malacca shaft and missing ferrule.

H. 2" x 2" x 4 1/2", O.L. 37"

\$2,500-\$3,500



41.

42. Ivory Nude Cane

Pre-Ban-A carved ivory nude, riding what appears to be a fish, detail work on all three dimensions of the handle, malacca shaft and a horn ferrule.

H. 4 1/2" x 2" x 1 1/2", O.L. 38"

\$1,500-\$2,500



42.





43.

43. Ivory Skull Cane

Ca. 1900-A carved ivory handle with an ornate silver metal end cap, matching silver metal collar, ebony shaft and a horn ferrule.
H. 4 ½" x 1 1/8", O.L. 36"
\$500-\$700



46.

44. Victorian Ivory Lady Cane

Ca. 1875-A carved ivory lady in bonnet, silver woven wire collar, malacca shaft and a horn ferrule.
H. 1 ½" x 2", O.L. 36"
\$500-\$600



44.

45. Ivory Cockatoo Cane

Ca. 1900-A carved ivory cockatoo with two color glass eyes, fully feathered, coin silver British collar, ebony shaft and metal ferrule.
H. 3" x 1 ½" x 1 ¼", O.L. 37"
\$400-\$700



45.

46. Victorian Ivory Flower Cane

Ca. 1875-A large ivory handle with various leaves and flowers much like the "The Wilkoff Cane", a true masterpiece, silver metal collar, 1" exotic wood shaft and a horn ferrule.
H. 4" x 4 ¾" x 1 ¼", O.L. 38"
\$1,200-\$1,800



47. Ivory Hound Dog Dress Cane

Ca. 1900-A massive carved hound with collar and ornate end work, post handle, exotic wood shaft with an ivory spacer and an ivory ferrule.
H. 2 ¼" x 2 ¼" x 4 ½", O.L. 38"
\$1,200-\$2,000

47.

48. Ivory Pincher Bug Cane

Ca. 1890-An ivory open carved handle with three pincher bugs attacking another insect, probably Japanese, small ivory collar, malacca shaft and a horn ferrule.

H. 2" x 2", O.L. 36"
\$1,000-\$1,200

49. Ivory Frog Cane

Pre-Ban-A carved ivory frog perched on leaves, ivory collar, 9 kt gold Russian collar, malacca shaft and a horn ferrule.

H. 2 3/4" x 4", O.L. 38"
\$900-\$1,200

50. Ivory Duck Cane

Ca. 1900-Carved ivory duck with two color glass eyes which is fully carved, ivory bow tie collar, natural bark covered shaft and a horn ferrule.

H. 3 1/2" x 2 1/2", O.L. 34 1/2"
\$1,000-\$1,500

51. Ivory Lizard and Bird Cane

Ca. 1900-An Anglo American ivory carving of a bird eating a lizard, small two color glass eyes, malacca shaft and an ivory ferrule.

H. 4 1/2" x 1 3/4", O.L. 34"
\$700-\$1,000



48.

50.

51.

49.



52.

54.



52. George Washington Ivory Cane

Pre-Ban-A nice carving of the father of our country with his name inked on the rear collar, signed 16 kt gold, Continental collar, malacca shaft and no ferrule.

H. 2" x 2 1/2", O.L. 37"

\$900-\$1,200

53. Ivory Snake Cane

Pre-Ban-A carved coiled snake with inked eyes, 1 1/4" massive malacca shaft and a horn ferrule.

H. 2" x 3 1/2", O.L. 38"

\$500-\$800

54. Ivory Gentleman's Cane

Ca. 1900-A large carved portrait cane of a gentleman with a handlebar mustache wearing a monical, small ivory collar, 1" malacca shaft and a metal ferrule.

H. 2 1/4" x 2 1/4" x 3 3/4", O.L. 38"

\$1,500-\$2,500

55. Native American Ivory Cane

Ca. 1890-A nice Art Nouveau touch to a feathered Chief, he is wearing a wampum turtle necklace, silver Art Nouveau collar, hardwood shaft and a brass ferrule.

H. 2 3/4" x 1 3/4" x 9 1/2", O.L. 33 1/2"

\$3,000-\$4000



53.



55.



56. Ivory Boxer's Cane

Ca. 1890-Carved ivory boxer with a handlebar mustache, ornate hallmarked silver metal collar, snakewood shaft and a horn ferrule.

H. 4" x 1 3/4", O.L. 37"

\$900-\$1,200



56.

57. Egyptian Ivory Dress Cane

Ca. 1910-Carved ivory handle of probably King Tut, lower handle is covered in serpent skin, carved lanyard hole, small ivory collar, exotic wood shaft and an ivory ferrule.

H. 2" x 1 1/2", O.L. 39"

\$600-\$900



57.

58. Ivory Ear of Corn Cane

Ca. 1900-Carved ivory handle, white metal collar, snakewood shaft and a horn ferrule.

H. 5 1/2" x 1 1/4", O.L. 38"

\$500-\$1,000

58.



60.

59. Ivory Lion Dress Cane

Ca. 1890-A stylized Anglo Indian handle with its prey in its mouth, two color glass eyes, metal ferrule, 1 1/4" maple shaft and a 4" metal ferrule.

H. 2" x 2 1/2", O.L. 38"

\$800-\$1,200

59.



60. Ivory Polar Bear Cane

Ca. 1800-A nicely carved polar bear standing on an ivory ball, copper and metal collar, ebony shaft and a horn ferrule.

H. 3" x 1 1/2" x 3", O.L. 38"

\$1,500-\$2,000





62.

61.



61. Ivory Bear Cane

Ca. 1900-A fierce carved bear attacking a steer, silver metal collar, exotic wood shaft and a horn ferrule.

H. 4 ½" x 2", O.L. 39 ½"

\$1,500-\$2,000

62. Ivory and Tortoise Dress Cane

Ca. 1890-An Art Nouveau segmented and graduated tortoise shaft, ivory disc atop and an ivory ferrule.

O.L. 38"

\$1,000-\$1,500

63.



63. Ivory Bedouin Cane

Ca. 1900-A large carved gentleman with a turban incrustated with jewels, leather collar, ornately carved ebony shaft with various flowers and foliage, metal ferrule

H. 3" x 3" x 2", O.L. 38"

\$1,500-\$2,000

64. Ivory Greyhound Cane

Ca. 1890-Carved ivory greyhound with two color glass eyes, 14 kt gold collar, snakewood shaft and a horn ferrule.

H. 5 ¼" x 1 ½", O.L. 36"

\$800-\$1,200



64.

65. Ivory Bear Cane

Ca. 1900-A large bear upon bamboo leaves, probably Japanese, signed sterling collar, rich snakewood shaft and a bimetal ferrule.

H. 1 1/2" x 5 3/4", O.L. 36 1/2"

\$1,600-\$1,800

66. Ivory African American Dress Cane

Ca. 1885-A carved ivory portrait cane with two color glass eyes, detail paid to hair and beard, ivory collar, malacca shaft and a stopper ferrule.

H. 1 1/2" x 2", O.L. 36"

\$700-\$1,000

67. Ivory Hound Dog Cane

Ca. 1910-A nice carved hound dog with a captured rabbit in his mouth, belt buckle collar, malacca shaft and a horn ferrule.

H. 3 1/2" x 2" x 2 1/4", O.L. 38"

\$800-\$1,200

68. Pig Ivory and Silver Dress Cane

Ca. 1865-A silver metal overlaid wild boar tusk, ornate silver metal collar, twigspur shaft and a metal collar.

H. 6" x 3 1/2", O.L. 35"

\$500-\$700

69. Massive Blackamoor Ivory Dress Cane

Ca. 1880-A beautifully carved ivory head with accessories including ear rings and necklace, ornate silver metal collar, lanyard holes, malacca shaft and a metal ferrule.

H. 2 3/4" x 2 1/4" x 4", O.L. 38"

\$1,200-\$1,500

67.



65.



66.



69.



68.





71.

70.

72.



70. Ivory Acorn Cane

Ca. 1890-A unique carved acorn handle in elephant ivory, small silver metal collar, exotic wood shaft and a metal ferrule.

H. 1 ½" x 5 ¼", O.L. 34 ½"

\$400-\$600

71. Whimsical Ivory Cane

Ca. 1880-A unique carved ivory handle with three children making extremely funny faces, a silver underplate to the handle, an interesting post handle exotic wood shaft and a horn ferrule.

H. 4 ½" x 1 ¾", O.L. 34 ½"

\$500-\$1,000



74.



73.

72. Ivory Portrait Cane

Ca. 1880-A carved ivory handle of a grandfather and granddaughter sitting by a window, him smoking a pipe as his hound dog looks up at the pair, exotic wood shaft and a horn ferrule.

H. 1 ¼" x 3 ½", O.L. 35"

\$600-\$900

73. Japanese Ivory Cane

Ca. 1890-A carved ivory character carrying a basket, ornate silver collar, bamboo shaft with a carved portrait of a gentleman and a metal ferrule.

H. 4" x 1 ¼", O.L. 34"

\$600-\$900

74. Ivory Portrait Cane

Ca. 1890-A carved ivory handle with two children and other high relief carvings, silver metal collar, exotic wood shaft and an ivory ferrule.

H. ¾" x 8", O.L. 35"

\$500-\$800

75. Carved Ivory Nude Cane

Ca. 1890-A nice carved full frontal nude in ivory, small ivory collar, pair of ivory eyelets with sash, malacca shaft and a horn ferrule.

H. 1 ½" x 4", O.L. 37 ½"

\$800-\$1,200

76. Walrus Ivory Civil War Soldier Cane

Ca. 1880-A civil war soldier carved in walrus ivory which is inscribed "Qv Co. 5", rose gold collar, hardwood exotic shaft and a metal ferrule (small chip to hat)

H. 1 ½" x 4", O.L. 32 ½"

\$500-\$800

77. Ivory Dog Sword Cane

Ca. 1875-A carved ivory dog with two color glass eyes, silver metal collar, a push and pull 29" sword which still retains bluing and etching, bamboo shaft.

H. 1 ¼" x ¾", O.L. 34"

\$500-\$700

78. Ivory Horse Cane

Dated 1886-A large ivory horse with all of the details and striations, presentation silver collar "Father, July 21st 1886 ", Exotic wood shaft and a horn ferrule.

H. 4 ½" x 1 ¼" x 2 ¼", O.L. 36 ½"

\$1,000-\$1,500

76.

75.

78.

77.





79.

81.



80.



82.

79. Ivory Rabbit Cane

Dated 1910-A well carved rabbit with high ears, silver presentation collar presented by the "Tharsis Copper Works", malacca shaft and a metal ferrule.

H. 2 1/4" x 1 3/4" x 5", O.L. 37"

\$1,500-\$2,000

80. Ivory Wildlife Cane

Ca. 1890-A carved ivory handle with grapes and vine, ornate rose gold-filled collar, ebony shaft and a horn ferrule.

H. 1 3/4" x 4 3/4", O.L. 35 1/2"

\$500-\$600

81. Ivory Soldier Cane

Ca. 1890-Ivory soldier with handlebar mustache, collar is 14 kt rose gold and signed Brigg, bamboo shaft and metal ferrule.

H. 1 1/4" x 2 3/4", O.L. 39"

\$500-\$800

82. Ivory Lion Cane

Ca. 1880-A fully carved elephant ivory lion, unsigned 14 kt collar, thick malacca shaft and a horn ferrule.

H. 1 1/2" x 2 1/2" x 5", O.L. 37 1/2"

\$1,500-\$2,000

83. Ivory Whippet Cane

Ca. 1910-A carved stylized ivory dog, ornate brass collar, malacca shaft and no ferrule.

H. 3 1/2" x 2 1/2", O.L. 34"

\$400-\$600



83.

84. Japanese Ivory Cane

Ca. 1890-A nicely carved handle with crane, frog and rat, small ivory collar with designs, exotic wood shaft and a metal ferrule.
H. 1" x 3 3/4", O.L. 36"
\$800-\$1,200

85. Carved Horse Cane

Ca. 1880-A carved ivory horse cane which is commonly known as "Win Place and Show", large ornate silver metal collar, thick malacca shaft and a metal ferrule.
H. 4 1/2" x 1 1/2", O.L. 36"
\$1,000-\$1,500

86. Eagle Pig Ivory Cane

Ca. 1890-A unique tusk handle carved in the shape of an eagle with a silver end cap and a supporting crown collar, ebony shaft and a metal ferrule.
H. 5 1/2" x 1 1/2", O.L. 36 1/2"
\$600-\$1,200

87. Ivory Egyptian Cane

Ca. 1910-A full ivory cane with "King Tut" as a thumb rest, segmented ivory shaft and no ferrule.
H. 4" x 1 3/4", O.L. 36"
\$700-\$1,299



85.

87.

84.

86.



88.

**Shown at Actual Size*

88. Massive Ivory Greyhound Cane

Ca. 1890-Thius ivory handle is the largest we have ever seen and carved in wonderful detail with minor damage to the tip of the right ear, two color glass eyes, silver metal ornate collar, stepped exotic wood shaft and a horn ferrule.

H. 6" x 2" x 2 1/2" -O.L. 37"

\$1,800-\$2,500



91.



89.

89. Ivory Dress Cane

Ca. 1890-A stylized ivory handle, ornate silver metal collar, black twigspur shaft and a metal ferrule.

H. 5" x 1 1/4", O.L. 36"

\$400-\$500

90. Ivory Fish Cane

Ca. 1900-A carved ivory fish with two color glass eyes, silver metal collar, ebonized shaft and a metal ferrule.

H. 4" x 1 1/4", O.L. 33 1/4"

\$400-\$700



90.

91. Ivory Art Deco Dog Cane

Ca. 1910-A stylized ivory dog with red glass eyes, horn handle shaft, silver metal collar, ebonized shaft and a metal ferrule.

H. 3 1/2" x 6", O.L. 38"

\$400-\$600

92. Ivory Egyptian Style Cane

Ca. 1910-A carved Egyptian style ivory handle, ivory collar, exotic wood shaft and a bone ferrule.

H. 4 1/4" x 1 3/8", O.L. 34 1/2"
\$400-\$700



92.

93. Ivory Phrenology Cane

Pre-Ban-A carved phrenology handle with original inking, small brass collar, exotic wood shaft and a brass ferrule.

H. 2" x 1 3/4" x 4", O.L. 36"
\$800-\$1,200



93.



94. Ivory Dress Cane

Ca. 1890-A two piece carved walrus handle, silver belt buckle collar, malacca shaft with varnished alligatoring and a stopper ferrule.

H. 3" x 3", O.L. 35"
\$400-\$600



94.

95. Ivory Pirate Sword Cane

Ca. 1880-Ac carved ivory pirate with beaded black eyes, small metal collar, push and pull 16" gilded and blued blade, bamboo shaft and no ferrule.

H. 1" x 1 1/2", O.L. 36"
\$500-\$700



95.



100.



96.



96. Ivory Bird Cane

Ca. 1910-A carved 5" ivory bird which is attached to a one piece natural branch shaft and a metal ferrule.

O.L. 35"

\$500-\$700

97. Carved Ivory Bird Cane

Ca. 1885-A carved bird on a branch, gold metal collar, exotic wood shaft and a horn ferrule.

H. 1 1/4" x 2 3/4", O.L. 3y6"

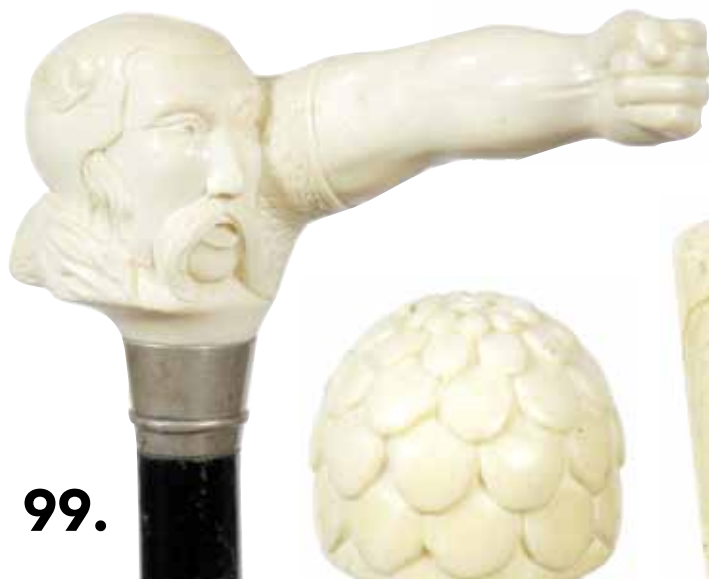
\$400-\$600

98. Ivory Dress Cane

Ca. 1890-A unique Art Nouveau ivory handle, thick malacca shaft and a bone ferrule.

H. 1 1/4" x 2 1/2", O.L. 35 1/2"

\$350-\$500



99.



98.



99. Ivory "Thor" Cane

Pre-Ban-A rarely seen subject in the cane world, hallmarked Continental silver collar, ebonized shaft and a metal ferrule.

H. 5" x 1 1/2" x 2 1/4", O.L. 34 1/2"

\$600-\$900

100. Ivory Dress Cane

Ca. 1880-Carved ivory with a hardstone disc atop, exotic wood shaft and a metal ferrule.

H. 1 3/4" x 2", O.L. 36"

\$300-\$500

97.

101. Carved Ivory Baboon Cane

Ca. 1890-A carved ivory Japanese handle with a baboon and its child, gold end plate and collar, stepped partridge wood shaft and a horn ferrule.

H. 4 1/4" x 1 3/8", O.L. 35"

\$800-\$1,200



101.

102. Ivory Whippet Cane

Ca. 1900-A carved ivory whippet with two color glass eyes, natural branch shaft which attaches to the head, small ivory collar, malacca lower shaft and a metal ferrule.

H. 4" x 1 1/2", O.L. 35 1/2"

\$500-\$600



103.

103. Ivory Dress Cane

Ca. 1880-An aesthetic carved ivory handle, hallmarked gold filled collar, malacca shaft and a horn ferrule.

H. 5" x 1 3/4", O.L. 35"

\$500-\$700



104.

104. Ivory Lion Cane

Pre-Ban-A carved ivory lion head and rectangle full ivory shaft and a horn ferrule.

H. 5 1/2" x 1 1/2", O.L. 34 1/2"

\$600-\$900



102.

105. Art Deco Ivory Dress Sword Cane

Pre-Ban-A carved ivory dress cane with a shagreen covering, ivory is signed Swaine & Adeney London, two silver metal collars, twin 1" four sided blade which is a push and pull mechanism, ebony shaft and a metal ferrule.

H. 1" x 4", O.L. 36 1/2"

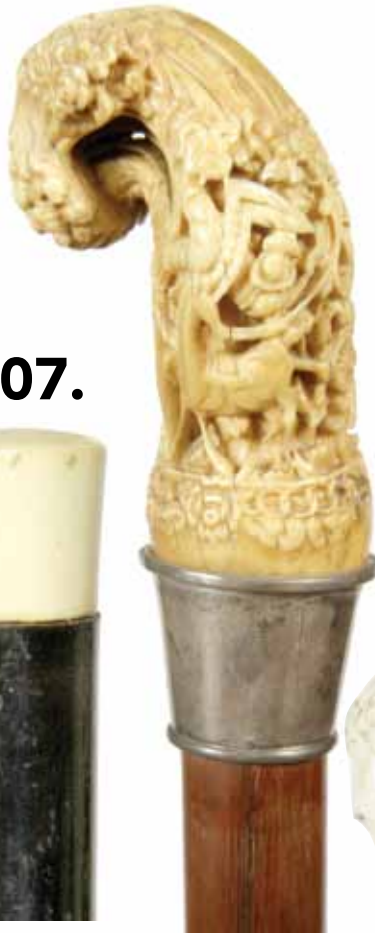
\$500-\$1,000



105.



106.



108.



106. Ivory Dress Cane

Ca. 1860-A carved ivory handle with various animals and foliage in high relief, fluted silver metal collar, hardwood shaft and a metal ferrule.

H. 3 1/2" x 2", O.L. 39"

\$600-\$1,000

107.



107. Ivory Dance Cane

Early 20th Century-A simple but elegant ivory dress cane, ebony shaft and a metal ferrule.

H. 1" x 1", O.L. 35 1/2"

\$250-\$350

108. Ivory Skull Cane

Ca. 1880-A unique high relief carved skull and snake cane done in great detail, small leather collar, malacca shaft and a metal ferrule.

H. 2" x 1 3/4" x 5", O.L. 34 1/2"

\$1,000-\$1,500



109. Ivory Skull Cane

Pre-Ban-A carved ivory skull with a Roman wreath attached, small ivory collar, blackened twigs spur shaft and a metal ferrule.

H. 2" x 2" x 2 1/2", O.L. 36"

\$900-\$1,200



109.



110.

110. Ivory Gambler's Cane

Ca. 1880-An unusually carved whale's tooth handle with various inlays of abalone and mother of pearl, stacked leather shaft and a metal ferrule.

H. 1 3/4" x 2 1/2", O.L. 34 3/4"

\$600-\$800

111. Ivory Cat Cane

Ca. 1885-A carved ivory cat perched in a tree with small inset eyes, very ornate silver metal collar, hardwood shaft and no ferrule.

H. 2" x 2", OL-35"

\$1,000-\$1,200

112. Ivory and Silver Dress Cane

Ca. 1889-An Art Nouveau handle with a silver overlay, silver metal collar which is signed sterling, exotic wood shaft and a metal ferrule.

H. 4 1/2" x 1 3/4", O.L. 37 1/2"

\$500-\$700

113. Ivory Classical Cane

Ca. 1880-A walrus ivory handle done in high relief, horn collar, whalebone shaft and no ferrule.

H. 5" x 1 1/2", O.L. 32 1/2"

\$700-\$1,200

114. Silver and Ivory Bird Cane

Ca. 1900-An unusual approach with an ivory bill-two color glass eyes and a British hallmarked silver bird, ebonized shaft and a horn ferrule.

H. 3" x 3", O.L. 34 3/4"

\$500-\$800

111.



112.



113.

114.





115.



116.

115. Ivory Medieval Knight Cane

Ca. 1860-A carved burl wood and ivory knight with a brass lion cartouche atop his helmet, silver metal collar, painted grain hardwood shaft and a horn ferrule.
H. 2" x 2 1/2", O.L. 35"
\$600-\$800

116. Ivory Owl Dress Cane

Dated 1861-A one piece carved and inked Victorian "hands on" handle, small owl is inscribed and inked on the thumb rest, high relief hand in basket, ornate silver metal collar, dated 1865, rich snakewood shaft and a metal ferrule.
H. 3 1/2" x 3 1/2", O.L. 35"
\$500-\$800



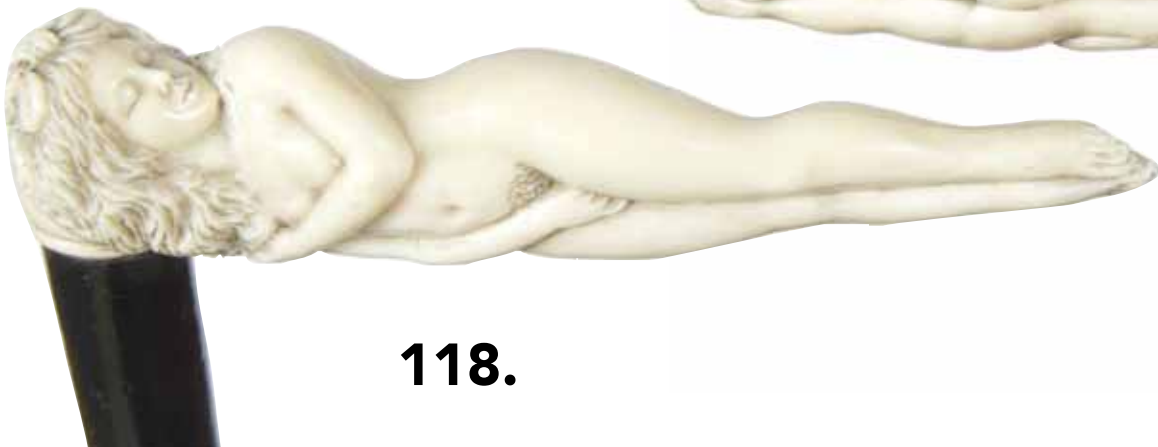
117.

117. Ivory Dress Cane

Ca. 1890-An Art Nouveau handle of a small child, silver metal collar, ebonized shaft and a horn ferrule.
H. 4 1/2" x 1 1/2", O.L. 34 3/4"
\$500-\$600

118. Ivory Nude Cane

Ca. 1890-A fully carved Art Nouveau style nude with flowing hair, carved on all sides, silver metal collar, ebonized shaft and a ivory ferrule.
H. 5 1/2" x 1 1/4", O.L. 32 1/2"
\$2,500-\$3,500



118.



119. Ivory Ram

Cane

Pre-Ban-A carved ivory ram's head with relief horns, ivory collar with small chip, ebony shaft and an ivory ferrule.

H. 3" x 2", O.L. 37"

\$500-\$700



119.

120. Ivory Tiger

Cane

Ca. 1900-A carved ivory tiger done in high relief, small glass eye, silver metal collar, ebony shaft and a horn ferrule.

H. 1 3/4" x 4 3/4", O.L. 34 1/4"

\$500-\$700

121.



121. Ivory Bulldog

Cane

Ca. 1900-A whimsical carving of a bulldog, gold-filled collar, snakewood shaft and a horn ferrule.

H. 1 1/2" x 2" x 2", O.L. 37"

\$500-\$800

122.

122. Ivory Dress

Cane

Dated 1876-A unique foliage carved ivory handle, various metal collar, bamboo shaft and no ferrule, handle is India inked with the date and owner's name.

H. 1 3/4" x 5", O.L. 37"

\$400-\$600



123.

123. Ivory Frog

Cane

Pre-Bane-A carved ivory frog with horn eyes, hallmarked "M.S.," British hallmarks, ebonized shaft and a horn ferrule.

H. 1 3/4" x 3 1/4", O.L. 37"

\$1,000-\$1,200

120.



124.



125.

124. Ivory Dance Cane

Early 20th Century-An oval carved ivory handle, small gold collar, oval ebony shaft and a horn ferrule.

H. 1 1/4" x 1/2", O.L. 35 1/2"

\$250-\$350

125. Ivory Dress Cane

Ca. 1875-A carved ivory dress cane with a "Jester" type figure, gold-filled fluted collar which has a small separation in the rear, exotic wood shaft and a metal ferrule.

H. 4 1/2" x 1 3/4", O.L. 35 1/4"

\$500-\$600

126. Ivory Duck Cane

Pre-Ban-A carved ivory handle with four ducks in high relief, all have two color glass eyes, small ivory collar, rich snakewood shaft and an ivory ferrule.

H. 1 3/4" x 4 1/4", O.L. 38"

\$700-\$1,200



127.

127. Ivory Leopard Cane

Ca. 1885-A carved ivory spotted leopard with a pair of jadeite eyes, ornate gold-filled collar, faux snakewood shaft and a metal ferrule.

H. 4 3/4" x 1 1/4", O.L. 34"

\$500-\$700

128. Ivory Dress Cane

Ca. 1880-A "Straight up" ivory handle, silver metal collar, stepped bamboo haft and a metal ferrule.

H. 4 1/4" x 1 1/4", O.L. 34"

\$250-\$350

126.



128.

129. Ivory Dress Cane

Ca. 1890-A Japanese presentation of a carved ivory handle, unusual gold-filled collar which is signed sterling-14k, a post handle hardwood shaft with a pair of ivory eyelets and a metal ferrule.
H. 4" x 1 1/2", O.L. 35 1/2"
\$500-\$700



129.

130. Ivory Leg Cane

Ca. 1890-A stylized ivory naughty leg, horn and ivory disc collar, ebony shaft and a metal ferrule.
H. 2 1/4" x 1 1/2", O.L. 35"
\$350-\$500



130.

131. Large Bulldog Cane

Ca. 1890-A large fierce bulldog with all the right details, appears that the right side of the face has been broken and glued, fluted gold-filled collar, malacca shaft and a metal ferrule.
H. 3" x 2" x 2", O.L. 38"
\$300-\$500



131.



132.

132. Ivory Bulldog Cane

Ca. 1900-A carved ivory bulldog handle with three dogs sitting under an umbrella, glass eyes with one missing, brass collar, ebonized shaft and no ferrule.
H. 2" x 2", O.L. 36"
\$600-\$900



133.

133. Ivory Egyptian Dress Cane

Early 20th century-A unique carved handle with both the end of the crutch being a high relief King Tut, thick malacca shaft and a brass ferrule.
H. 5" x 4", O.L. 35"
\$900-\$1,200



134. Ivory Fist Cane

Pre-Ban-A large carved ivory fist holding a lanyard, carved ivory cuff collar, thick malacca shaft and an ivory ferrule.
H. 2 ¼" x 1 ¾" x 2 ¼", O.L. 39"
\$800-\$1,200

135.



135. Ivory Lion Cane

Ca. 1890-A pierced carved ivory lion handle showing complete detail of the lion, British hallmarked silver metal collar, malacca shaft and a brass ferrule.
H. 4 ½" x 1 ¾", O.L. 36 ½"
\$1,000-\$1,500

136.

134.



136. Ivory "All Nations" Cane

Ca. 1880-A carved ivory handle showing different nationalities, one has a chip out of his nose, ornate silver plated collar, twigspur shaft and a metal ferrule.
H. 1 ¾" x 1 ¾" x 2", O.L. 36"
\$500-\$700



137. Ivory Dress Cane

Dated 1867-A simple but elegant ivory dress cane, silver metal collar, dated July 1867, 1 ¼" x 1 1/8" rich mahogany shaft and a horn ferrule.
H. 1 ½" x 2", O.L. 37"
\$400-\$600

137.

138. Art Nouveau Ivory Dress Cane

Ca. 1890-An Art Nouveau silver and ivory handle, faux bamboo partrigewood shaft and a 2" horn ferrule.
H. 1 ¼" x 2", O.L. 35 ½"
\$350-\$600

138.

139. Ivory "Caning" Cane

Ca. 1890-Carved ivory dog, unique brass collar showing an early lock attached, lower brass collar, bamboo shaft and no ferrule, was probably an example of a cane used to punish people.

H. 1 ½" x ½", O.L. 32 ½"

\$250-\$450

139.



140. Ivory Wolf Cane

Ca. 1890-A carved ivory handle of a wolf looking at a muskrat, white metal collar, natural branch vine shaft and no ferrule.

H. 4" x 1 ½", O.L. 34 ¾"

\$400-\$600

140.



141. Ivory Nautical Cane

Pre-Ban-A high relief carved handle of a pair of fish holding an ivory ball, small ivory collar, rich snakewood shaft and a horn ferrule.

H. 2 ½" x 2 ½" x 4", O.L. 37 ½"

\$1,000-\$1,200

141.



142. Ivory Whale Cane

Pre-Ban-A carved walrus tusk, ivory handle with a whale's front on one side and his tail sticking out on the other side, nautical rope for a thumb rest and a carved harpoon atop, silver metal collar, ebony shaft and a metal ferrule.

H. 4" x 1 5/8", O.L. 36"

\$500-\$1,000

142.





143.

145.



144.

143. Ivory Dog Cane

Ca. 1890-A carved dog with flop ears, nice gold filled collar, American oak shaft and a 3" brass ferrule.

H. 4" x 1 3/4", O.L. 33 1/2"

\$500-\$700

144. Folk Art Snake Cane

Ca. 1880-A carved ivory pommel handle, small silver metal collar, folk art snake carved throughout the hardwood shaft and a metal ferrule.

H. 1 1/4" x 1", O.L. 33"

\$200-\$400

145. Ivory and Tortoise Folk Cane

Ca. 1880-A carved ivory handle with a tortoise end plate, unique carved gentlemen with split beard and two color glass eyes, matching wood buttons on the lower collar, hardwood shaft and a metal ferrule.

H. 3 1/2" x 5 1/2", O.L. 33"

\$500-\$800



147.



146.

146. Ivory Rabbit and Fox Cane

Late 19th Century-A unique carved handle with a full rabbit on one side coming out of the log and a fox's tail end going into the log, brass collar, exotic twigspur shaft and no ferrule.

H. 4 1/2" x 1 1/2", O.L. 34 1/2"

\$450-\$650

147. Ivory Frog Cane

Early 20th Century-A whimsical carved ivory frog sitting on a log with green and black glass eyes, silver metal collar, hardwood shaft and a large horn ferrule.

H. 3 1/2" x 1 1/2", O.L. 34 1/2"

\$600-\$1,000

148. Ivory Dress Cane

Late 19th Century-An ivory ball cane, British hallmarked ornate silver collar which is split, 1 1/8" malacca shaft and a copper ferrule.

H. 2" x 2", O.L. 38 1/2"

\$300-\$500

149.

149. Ivory Penis Cane

Ca. 1860-A simple ivory handle with an ornate gold-filled collar, bull penis shaft and an ivory ferrule.

H. 1" x 3 3/4", O.L. 34"

\$400-\$600

150. Ivory Gambler's Cane

Late 19th Century-A gambler's cane containing dice with a screw off top, malacca shaft and an ivory ferrule.

H. 2 3/4" x 1", O.L. 33 1/4"

\$500-\$700

151. Large Ivory Horse Cane

Ca. 1870-A large ivory horse done in high relief with two color glass eyes, beaded Victorian silver-plate collar, thick malacca shaft and a 2" horn ferrule.

H. 5" x 1 1/2" x 1 3/4", O.L. 34 1/2"

\$2,000-\$2,500



148.



150.



151.



152.

152. Ivory Horoscope Cane

Ca. 1850-An unusual presentation with inked moon, sun and stars on this ivory handle, original coin silver eyelets, malacca shaft which is inscribed with signs of the zodiac plus many other items including crabs, ladies, goats, lions, various Greek Gods, naked women and so on and so on, metal ferrule.

H. 1 1/4" x 1 1/4", O.L. 35"
\$1,000-\$2,000



155.

153. Ivory Bacchus Cane

Ca. 1880-A high relief carved walrus ivory handle, gold-filled collar, partrigewood shaft and a metal ferrule.

H. 1 1/2" x 5 1/2", O.L. 36"
\$400-\$600



153.

154. Carved Ivory Dress Cane

Late 19th Century-A carved ivory handle with a baleen disc atop, handle has two striations which are separated and a copper ferrule.

H. 2 1/2" x 2 3/4", O.L. 36"
\$300-\$500



155. Ivory Panther Cane

Pre-Ban-A high relief carved large panther ivory handle, small ivory collar, beautiful snakewood shaft and an ivory ferrule.

H. 4" x 1 3/4" x 5 1/2", O.L. 38 1/2"
\$1,200-\$1,800



154.



156. Bone Skeleton Cane

Ca. 1920-A carved bone full skeleton front and back, faux bamboo partridge wood shaft and a metal ferrule.

H. 1" x 4 1/2", O.L. 37"

\$500-\$700

156.



159.



157. Ivory Skull Cane

Pre-Ban-A carved ivory skull, British hallmarked but unreadable silver collar, ebony shaft and a metal ferrule.

H. 1 3/4" x 1 3/4", O.L. 34 3/4"

\$400-\$500

157.



158. Ivory and Snake Skull Cane

Early 20th Century-A large and unique skull carving, probably the best in the collection, high relief carved snakes upon the skull with great detail applied to every bone, ocean wave silver metal collar, rich mahogany shaft and a horn ferrule.

H. 2 3/4" x 2 1/2" x 2 3/4", O.L. 38 1/2"

\$1,500-\$2,500



158.

159. Ivory Eagle Cane

Ca. 1890-A Japanese carved ivory eagle and rat in high relief, signed sterling collar, ebony shaft and a horn ferrule.

H. 4" x 1", O.L. 34"

\$500-\$700



161.

160. Ivory Art Nouveau Cane

Ca. 1890-An unusual Art Nouveau presentation with a three dimensional ivory lady collar with flowing hair, hardwood shaft and an ivory ferrule. O.L. 37"

\$400-\$600



164.

161. Ivory Dog and Rabbit Cane

Ca. 1900-A carved ivory rabbit hunting dog with a high relief tree rabbit and dog, two color glass eyes, gold-filled Brigg signed collar, thick bamboo shaft and a horn ferrule.

H. 4 3/4" x 1 1/4", O.L. 36"

\$500-\$700



162. Ivory Bulldog Cane

Ca. 1910-Carved ivory bulldog, British hallmarked silver collar, partridge wood shaft and a metal ferrule.

H. 1 3/4" x 1 1/2", O.L. 34 1/2"

\$350-\$550



160.

163. Ivory Skull Cane

Ca. 1900-A carved ivory skull, fluted coin silver collar, small brass lower collar, thick malacca shaft and a metal ferrule.

H. 2 1/4" x 1 5/8" x 2 1/4", O.L. 35"

\$700-\$1,000



163.

164. Ivory Eagle Cane

Ca. 1875-A carved ivory eagle with two color glass eyes, with thumb rest, ribbed silver metal collar, rich snakewood shaft and a horn ferrule.

H. 5 1/2" x 2 5/8", O.L.-35"

\$700-\$1000

162.

165. Ivory Baboon Cane

Ca. 1880-A Japanese carved baboon with their three children carved in high relief, ornate silver metal collar, ebony shaft and a horn ferrule.

H. 1 7/8" x 5 1/4", O.L. 37"

\$1,000-\$1,500

166. Ivory Flower Cane

Ca. 1890-A carved ivory Art Nouveau handle with tulips swaying in the wind, silver metal collar, exotic wood shaft and a horn ferrule.

H. 4" x 1 1/2", O.L. 37"

\$350-\$550

167. Ivory Exotic Bird Cane

Late 19th Century-A unique carved exotic bird with large yellow and black glass eyes, stained under eyes and beak, ornate coin silver British collar, ebonized shaft and no ferrule.

H. 2 1/4" x 3 3/4", O.L. 38"

\$600-\$900

168. Ivory Skull Cane

Ca. 1890-An expert carved ivory skull showing even the neck bones, coined silver British collar, ebonized shaft and a horn ferrule.

H. 1 1/2" x 2" x 3", O.L. 36"

\$1,000-\$1,500



165.



167.



166.



168.



171.

169. Ivory Snake Cane

Pre-band-A twin snake ivory handle, white metal collar exotic wood shaft and a horn ferrule.

H. 3"x2 3/4", O.L.37"

\$700-\$1,000

170. Ivory Dress Cane

Ca. 1860-A large ivory German handle with a high relief cartouche, original braided lanyard, small ivory collar, ebony shaft and a horn ferrule.

H. 1 7/8" x 1 7/8" x 7", O.L. 35"

\$900-\$1,000

172.

171. Large Ivory Lion Cane

Late 19th Century-A well carved ivory lion with fierce teeth, coin silver hammered British collar, rich malacca shaft and a horn ferrule.

H. 3" x 2 3/8" x 4 1/4", O.L. 38"

\$1,500-\$2,000

172. Asian Stag Cane

Ca. 1890-A carved staghorn Chinese high relief carving, silver metal collar, segmented bone shaft and a bone ferrule.

H. 7" x 1 1/2", O.L. 36"

\$1,000-\$1,200

170.



169.



173. Mildly Erotic Ivory Cane

Ca. 1890-A carved ivory handle which is often called "mildly erotic" due to its resemblance to a part of the female body, small ivory collar, pair of coin silver eyelets, ebony shaft and a metal ferrule.

H. 3 1/4" x 2", O.L. 34 1/2"

\$500-\$600

174. Ivory Leaf Cane

Ca. 1885- A carved ivory crutch leaf done in "The Wilkoff style", large gold-filled collar, ebony shaft and a horn ferrule.

H. 4 1/2" x 3", O.L.- 38.5"

\$700-\$1200

175. Mother Goose Ivory Cane

Pre-Ban-Carved ivory Mother Goose with two color glass eyes, lower dropping jaw with a red tongue, silver metal collar, ebony shaft and a horn ferrule.

H. 5" x 1 1/2", O.L. 34"

\$1,000-\$1,500

176. Ivory Dress Cane

Ca. 1900-A carved ivory handle with a large pinching bug done in high relief, beaded ivory collar, exotic wood shaft and an ivory ferrule.

H. 4" x 7", O.L. 34

\$500-\$700

173.



174.



175.



176.





177.

177. Ivory Fish Cane

Ca. 1890-A Japanese carved ivory fish with two color glass eyes, probably carp, silver metal collar, ebonized shaft and an ivory ferrule.

H. 3 1/2" x 1 3/4", O.L. 36"

\$500-\$700



179.

178. Ivory Lion Cane

Ca. 1880-A carved ivory lion, large ivory collar, post handle, exotic wood shaft and a metal ferrule.

H. 2" x 2 1/2", O.L. 35"

\$600-\$900

179. Ivory Dog Cane

Ca. 1875-A cute carved puppy with faceted glass eyes, silver metal hexagonal collar, hexagonal hardwood shaft and no ferrule.

H. 1 3/4" x 2", O.L. 31"

\$500-\$600



180. Ivory Dress Cane

Ca. 1860-A simple but elegant ivory handle, unmarked gold collar, thick malacca shaft and an ivory ferrule.

H. 1 1/4" x 2", O.L. 35"

\$400-\$600



178.

180.

181. Art Nouveau Ivory Cane

Ca. 1890-A carved ivory handle with a high relief beetle, silver metal end caps, fluted silver metal collar signed sterling, natural branch twigs spur shaft and a horn ferrule.

H. 4 ½" x 1 ¼", O.L. 34 ½"

\$500-\$600



181.

182. Ivory Dress Cane

Ca. 1860-A carved ivory military subject done in the French style, small ivory collar, thick malacca shaft and a horn ferrule.

H. 1 ¾" x 1 ¾", O.L. 34 ½"

\$500-\$600

183. Japanese Ivory Cane

Ca. 1890-A high relief carved Japanese handle with Tigers attacking a baboon, wrapped leather collar, exotic wood shaft and horn ferrule.

H. ¾" x 7 ½", O.L. 36"

\$700-\$1,000



183.

184. Ivory Fruit Basket Cane

Ca. 1870-A carved ivory fruit basket with nice details, ornate hallmarked British silver collar, exotic wood shaft and a horn ferrule.

H. 1 5/8" x 1 5/8", O.L. 38"

\$500-\$600



184.

182.





185.

187.



185. Ivory Turban Portrait Cane

Ca. 1880-A high relief carved handle of a gentleman in turban, ivory collar, rich snakewood shaft and a horn ferrule.

H. 1 7/8" x 2 1/4", O.L. 39"

\$600-\$800

186. Ivory Rabbit Cane

Ca. 1870-A large carved rabbit running in the grass, attention paid to the detail on the rabbit, ivory collar, near mint old bamboo shaft and a metal ferrule.

H. 5 1/2" x 1 1/4" x 2 3/4", O.L. 35"

\$1,500-\$2,000

187. Ivory Bulldog Cane

Ca. 1900-A carved ivory bulldog with two color glass eyes, silver metal collar, exotic wood shaft and a metal ferrule.

H. 2" x 1 7/8", O.L. 33 1/4"

\$500-\$700

188. "Man in the Moon" Ivory Cane

NO DATE-A carved ivory handle with the face inscribed on the underside, silver metal collar, ebony shaft and no ferrule.

H. 4" x 3", O.L. 33"

\$600-\$800



186.



188.

189. Ivory Dress Cane

Late 19th century-A simple but elegant walrus ivory handle, silver metal collar, stacked (MISSED), metal ferrule.

H. 4" x 1 1/2", O.L. 33 1/22"

\$250-\$350

190. Ivory Lion Cane

Ca. 1880-A unique carved handle with the lion becomes the thumb rest, fierce carved teeth and mouth, snakewood shaft and an ivory ferrule.

H. 5" x 1 3/4", O.L. 36"

\$700-\$1,200

191. Japanese Staghorn Masterpiece Cane

Ca. 1890-An absolute wonderful Japanese carving with high relief rats, frogs, foliage, cat tails, etc., this is probably our best presentation of a Japanese carving in all of our auctions, most of the rats have inlaid black eyes, large frog holds a cat tail as he has a smile on his face, wrapped leather collar, exotic wood shaft and a horn ferrule.

H. 1 5/8" x 11", O.L. 38"

\$1,400-\$1,800

192. Ivory Dress Cane

Dated 1880-A German carved handle of a gentleman in high relief with his dog and his gun upon his back, the handle is inscribed on the rear with the owner's name and the date, ebony shaft and a metal ferrule.

H. 4" x 7 1/4", O.L. 34"

\$700-\$1,000



190.



191.



192.



189.



193.

**193. Ivory
Gambler's Cane**

Late 19th Century-A carved ivory gambler's container which holds two bone die, large coin silver collar, 1 1/8" malacca shaft and a horn ferrule.
H. 1 1/2" x 4 1/2", O.L. 36"
\$600-\$900



194.



**194. Ivory Eagle
Cane**

Ca. 1875-A high relief ivory carved eagle, silver metal collar, exotic wood shaft and a horn ferrule.
H. 3 1/2" x 2 3/4", O.L. 34 1/2"
\$500-\$600



195.

**195. Ivory Monkey
Cane**

Dated 1912-A unique smiling monkey handle with two color glass eyes and carved throughout, large presentation collar, dated Aug. 2, 1912, rich malacca shaft and a metal ferrule.
H. 1 5/8" x 2", O.L. 35 1/2"
\$700-\$900



**196. Japanese Ivory
Cane**

Ca. 1890-A carved ivory handle with two gentlemen and two ladies done in the Japanese style, silver metal collar, exotic wood shaft and a metal ferrule.
H. 7/8" x 7 3/4", O.L. 36"
\$700-\$1,000

196.

197. Noah Face Ivory Cane

Ca. 1890-A carved ivory Japanese handle with many faces, small ivory collar, exotic wood shaft and a small horn ferrule.

H. 2 ¼" x 2 ¼", O.L. 35"

\$800-\$1,200

198. Ivory Dress Cane

Ca. 1870-A simple ivory handle, small silver collar, carved exotic wood shaft, pair of coin silver eyelets and a 2" brass ferrule.

H. 1 ¼" x 2", O.L. 34 ½"

\$400-\$600

199. Ivory Dress Cane

Ca. 1990-A carved elephant ivory handle, belt and buckle metal collar, ebony shaft and a horn ferrule.

H. 3 ¼" x 6 ¾", O.L. 34"

\$350-\$500

200. Ivory Owl Cane

Early 20th Century-A carved ivory fully carved owl head, two color glass eyes, British hallmarked collar "C.C. & S.", thick malacca shaft and a brass ferrule.

H. 2" x 2 ¼", O.L. 33 ½"

\$500-\$1,000



199.

198.



197.



200.

201. Ivory Swan Cane

Ca. 1880-A carved ivory swan with glass eyes, silver metal ribbed collar, malacca shaft and a metal ferrule.

H. 1 ¼" x 5 ½", O.L. 34 ½"

\$400-\$600

202. Large Ivory Elk Cane

Ca. 1890-A large carved ivory handle of an elk stag, large ribbed silver metal collar, thick malacca shaft and a metal ferrule.

H. 1 ¼" x 2" x 4 ½", O.L. 36"

\$1,000-\$1,500

203. Ivory Nude Cane

Late 19th Century-A carved ivory nude which is semi erotic because of the chain and cuff on her right leg, artist paid nice detail to both front and back of this subject, small painted metal collar, ebony shaft and no ferrule.

H. 2" x 3 ¼", O.L. 36"

\$1,500-\$2,500

204. Japanese Ivory Snake Cane

Ca. 1890-A carved ivory snake with small beaded eyes, signed with an oriental cartouche, 14kt gold collar, stepped partridgewood shaft and a 2" horn ferrule.

H. 4" x 1 ¼", O.L. 34 ½"

\$700-\$1,000



203.



202.



204.

201.

205. Ivory Tiger Cane

Early 20th Century - A carved ivory handle with a tiger's head thumb rest, ornate presentation sterling collar, malacca shaft and a 3" horn ferrule.

H. 1 ½" x 1 ½" x 5 ¼", O.L. 32"

\$600-\$900

205.



206. Ivory Lion Cane

Ca. 1890-An ivory Japanese carving of a lion, lion is in relief carving on the top of the handle, square silver collar, square exotic light wood shaft and a metal ferrule.

H. 5" x 2 ¾", O.L. 35"

\$500-\$700

206.



207. Ivory Lion Cane

Ca. 1890-A carved ivory handle with a bell bronze lion atop, thick bamboo shaft and a horn ferrule.

H. 1 ½" x 1 ½", O.L. 35 ½"

\$400-\$700

207.

208. Erotic Ivory Nude Cane

Late 19th Century-A beautifully carved Art Nouveau style nude laying on her back with the devil himself piercing his eyes toward the enchanted beauty, high relief carving paid to all details and truly a masterpiece in this field of collecting, British hallmarked coin silver collar " W. D.", rich thick malacca shaft and a horn ferrule.

H. 1 3/8" x 2 ¼" x 5 ¼", O.L. 36"

\$3,500-\$4,500

208.





209.

209. Inuit Ivory Cane

Ca. 1900-A carved ivory fox in walrus ivory, ribbed gold metal collar, ebony shaft and a stag ferrule.
H. 2 ½" x 6", O.L. 35 ½"
\$500-\$700



210.

210. Tiger Dress Cane

Ca. 1880- A carved tiger dress cane with two color glass eyes, silver for ears and nose, Art Nouveau style silver collar, one piece natural branch shaft and a horn ferrule.
H. 5 ½" x 3", O.L. 36"
\$500-\$700



211.

211. Ivory Minstrel Dress Cane

Ca. 1900 - A carved African minstrel actor done in high relief, silver metal collar with some decoration, natural twigs spur shaft and no ferrule.
H. 2 1/8" x 2" x 2 ½', O.L. 33 ½"
\$600-\$900



212.

212. Ivory Barrister Cane

Late 19th Century-A carved ivory barrister in his wig, gold-filled collar, half chip carved ebony shaft and a horn ferrule.
H. 1 3/8" x 2 ¼", O.L. 35"
\$500-\$600

213. Ivory Erotic Whimsical Cane

Early 20th Century-A carved ivory punch figure with a penis automation, when a button in the rear is pushed the penis extends forward, high relief carved, 9 kt gold collar with Continental hallmarks, malacca shaft and a horn ferrule.

H. 4" x 1 3/4", O.L. 33 1/2"

\$3,500-\$4,500

213.

214. Erotic Ivory Cane

Mid 20th Century-An erotic carved ivory handle, ornate silver metal collar, twisted hardwood shaft and a metal ferrule.

H. 3" x 1 3/4" x 3", O.L. 39"

\$800-\$1,200

214.



215.



218.



215. Erotic Buttocks Cane

Pre-Ban-A carved ivory female buttocks cane showing all details, inscribed "Hold Me Tight", ornate silver metal collar, twigspur natural branch shaft and a horn ferrule.
H. 1 7/8" x 1 7/8" - O.L. 32"
\$1,200-\$1,500

216. Ivory Container Cane

Ca. 1900-Carved ivory container cane, the top screws to the mid section, black horn collar, 1 1/4" hardwood shaft and a stag ferrule.
H. 1 3/4" x 6", O.L. 39"
\$500-\$700

217. Ivory Skull Cane

Early 20th Century-An ivory carved skull, with a dark hood, sterling signed 900.900 silver collar, exotic wood shaft and a metal ferrule.
H. 4" x 2" x 2 1/2", O.L. 37"
\$700-\$1,000

218. Ivory Skull Cane

Ca. 1900-A unique carved skull, ribbed ivory collar, British hallmarked coin silver lower collar which is mostly unreadable, malacca shaft and a horn ferrule.
H. 2 1/2" x 1 3/4" x 2 1/2", O.L. 36"
\$1,000-\$1,500

217.



216.



219. Ivory Skull And Snake Cane

Pre-band-A large carved ivory skull with a rattlesnake atop, silver metal collar, 1" malacca shaft and a 3" metal ferrule. H. 3" x 3 1/2" x 1 7/8", O.L.36"

\$1,200-\$1,800

220. Ivory Skull And Snake Cane

Ca. 1900-A carved ivory skull atop a twisted snake on a tree branch, coin silver collar, malacca shaft and a horn ferrule. H.2"x1 7/8"x5 1/2", O.L.38"

\$1,200-\$1,500

221. Ivory Skeleton Cane

A carved ivory full skeleton with a rotating head which turns left to right, carved throughout front and back, small horn collar malacca shaft and a horn ferrule. H.1 5/8" x 1 5/8" x 6", O.L.39"

\$1,200-\$1,800

222. Ivory Skull Cane

Ca.1880-A whimsical ivory skull with green and black glass eyes, silver collar, an ebony shaft, and a horn ferrule. H. 1 1/4" x 1 1/2" x 1 1/2", O.L.34"

\$400-\$500

220.

219.

222.

221.





223.



224.



223. Ivory Skull Cane

Ca.1900-A folkie carved ivory skull, white metal collar, black malacca shaft and a metal ferrule.

H. 2" x 2", O.L.34"

\$400-\$600

224. Full Ivory Skull Cane

Ca.1900-A well carved ivory skull cane, a segmented detailed carved ivory shaft and an ivory ferrule.

H.2 1/2 "x 2 1/2 "x 2 1/4 " , O.L.36 1/2 "

\$1,200-\$1,800

225. Automated Ivory Skull Cane

Late 19th Century-A carved automated skull with moving eyes, a protruding red tongue, and lower jaw dropping when a button is pushed in the rear, fine working condition, fluted ivory collar, ebonized shaft and a metal ferrule.

H.2 1/2 "x 1 1/2 "x1 7/8 " ,O.L.34"

\$1,500-\$2,000

226. Ivory Skull And Snake Cane

Late 19th Century-A carved ivory handle with a snake wrapped around the base of the skull and its head coming out of the eye socket, a silver metal collar thick malacca shaft and a double horn ferrule.

H. 2" x 2" x1 3/4 " ,O.L.33 1/4 "

\$600-\$900



225.



226.

227. Ivory Skull Cane

Ca. Late 19th Century-A folkie carved ivory skull which has two glass eyes, copper collar stepped parkers wood shaft and a mettie ferrule. H. 1 ½ "x 1 ¾ ", O.L.33"
\$400-\$600

228. Silver and Ivory System Cane

Late 19th Century-A unique cast silver skull which doubles as a hinged poison container or pomander, scrimshaw Indian ink flowers and foliage on the ivory supporting handle, continental hallmarks ebony shaft and a metal ferrule. H.1" x 1 ¾ "x 3 ½ ", O.L.34"
\$2,000-\$2,500

229. Ivory Dog Cane

Ca.1900-A carved and stained ivory dog handle with two colored glass eyes, small ivory collar exotic wood shaft and a horn ferrule. H.2 ¼ "x 2 ¼ ", O.L. 36 ½ "
\$400-\$600



230. Ivory Dragon Cane

Ca.1890-A fully carved dragon handle with a pair of these fierce creatures, silver metal collar bamboo shaft and a horn ferrule. H. 4" x 1 ½ ", O.L.33 ½ "

\$500-\$1,000

231. Ivory Dice Cane

Pre band- A carved ivory dice, silver metal collar an ebony shaft and a 4" brass ferrule.

H. 1 ½ "x 1 ½ " O.L.36"

\$400-\$600

232. Ivory Dress Cane

Ca.1875- An ivory sword cane with a carved ivory handle with various foliage, ornate silver metal collar four sided 22" push and pull blade ebony shaft and a brass ferrule. H. 7" x 1", O.L.36"

\$500-\$800

233. Ivory Man In The Moon Cane

Early 20th Century-A carved ivory man in the moon with baby blue two colored eyes, black horn handle ebony twigspur shaft with ivory tips and a brass ferrule.

H. 2"x 1 ¾ ", O.L.36"

\$600-\$900



234. Ivory Dress Cane

Late 19th Century-A carved ivory tooth with a metal disc atop, inlaid elephant ivory atop the ebony shaft and a metal ferrule.

H. 1 ½ "x2 ¼ ", O.L. 32 ½ "

\$400-\$600

235. Ivory And Lapis Dress Cane

Ca. 1890-A straight up ivory handle with a lapis ball atop supported by a woven gold filled wire, small ivory collar, snakewood shaft and an ivory ferrule.

H. 1 "x 6 ½ ", O.L. 39"

\$1,000-\$1,500

236. Ivory And Horn Sword Cane

Ca. 1880-A carved horn handle of an eagle with two colored glass eyes, bone cylinder support, ornate brass collar, 13" push and pull ornate blade, push button mechanism needs a little tweaking, split malacca shaft and a metal ferrule.

H. 2 ½ "x 3", O.L. 33"

\$600-\$900

237. Ivory Conductors Wand

Late 19th Century-A carved ivory handle with a pair of bone spacers, small chip from a atop one spacer, exotic hardwood shaft and a horn tip.

H. 2 "x 1 ½ ", O.L. 29"

\$100-\$200



234.



235.



236.

237.





238.

240.

239.

238. Horn And Ivory Country Cane

Ca.1880-A nice country cane with inlaid copper throughout the wood handle, ivory spacer and horn spacer, pair of mother of pearl eyelets thick cherry shaft and a horn ferrule.

H. 3"x 5", O.L.34"

\$250-\$350

239. Japanese Ivory Folk Cane

Ca.1890-A bamboo carved and mixed metal decorated with ivory faces and plants fully carved bamboo root cane with a brass ferrule. O.L.37"

\$400-\$600

240. Ivory Turkey Cane

Pre band- A carved and stained full-figured ivory turkey in the upright position, silver metal collar, malacca shaft and a metal ferrule.

H. 3" x 2"x 3", O.L.35 ¾"

\$800-\$1,200

241. Victorian Wasp Cane

Ca.1875-A unique gold-filled top in the shape of an egg with a jewel encrusted wasp with garnets and other stones, ivory collar with a small split, exotic wood shaft and a horn ferrule.

H. 1" x 2 ½ ", O.L.36"

\$1,000-\$1,500

241.

**242. "One Eyed Pirate"
Cane**

Ca.1860- A carved ivory and wood handle with an evil pirate with one glass eye, white metal collar hard wood shaft and a metal ferrule.

H. 1 ½" x 2", O.L.35 ½"

\$300-\$500

242.



**243. Silver And Ivory Dress
Cane**

Ca.1890-A silver overlaid ivory handle, signed silver collar, exotic wood shaft and a metal ferrule.

H. 3 ¾" x 1 ½", O.L.33"

\$400-\$600

244. Ivory Dress Cane

Ca.1890-A straight up ivory handle with a silver end cap and Florentine style silver overlay, silver metal collar hardwood shaft and a brass ferrule.

H. 1 3/8" x 5 ¼", O.L.33 ½"

\$300-\$500

244.



245.

**245. Ivory African American
Dress Cane**

Ca. 1885-A carved ivory portrait cane with two color glass eyes, detail paid to hair and beard, ivory collar, malacca shaft and a stopper ferrule.

H. 1 ½" x 2", O.L. 36"

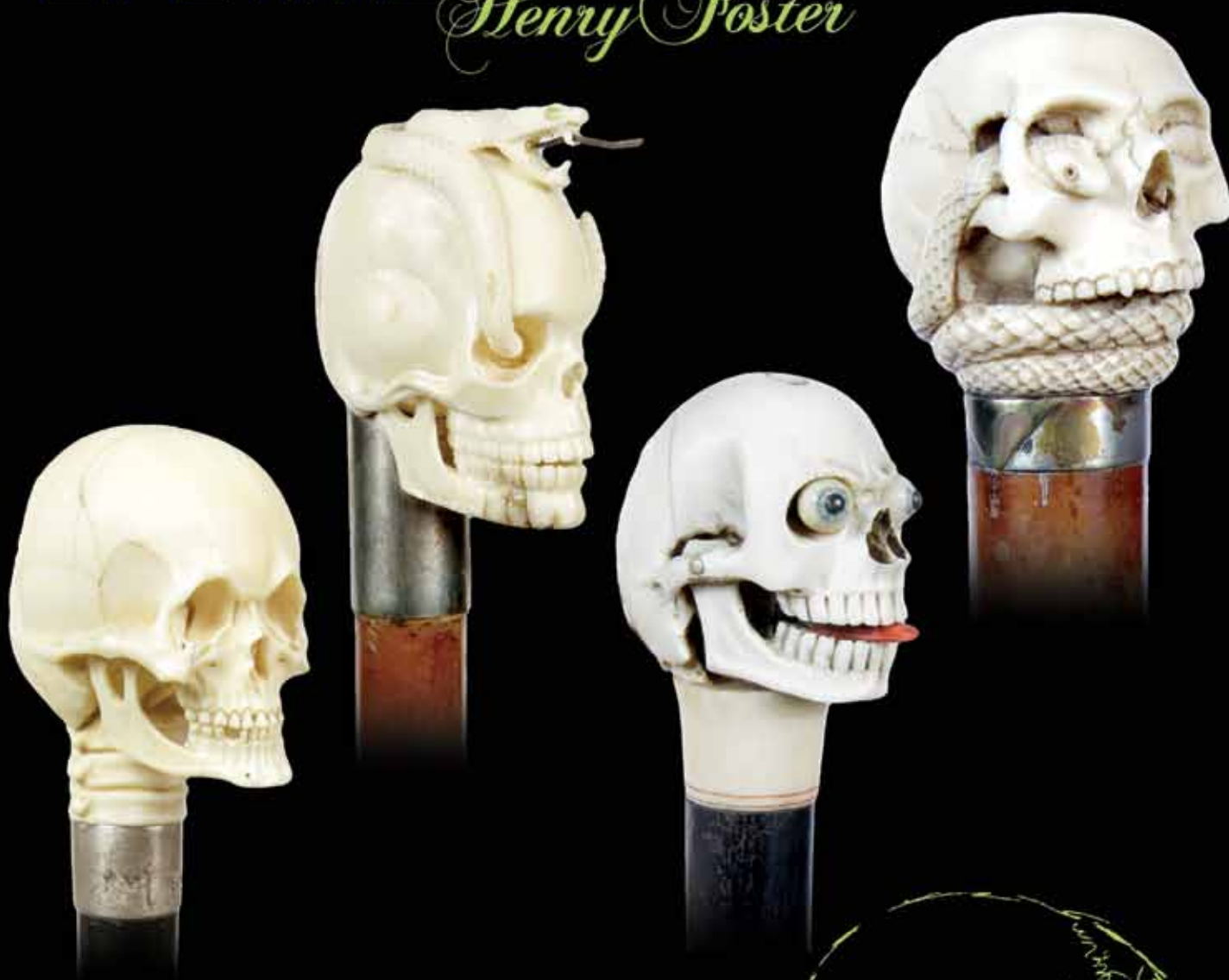
\$500-\$700



243.

KIMBALL AND VICTORIA STERLING PRESENT

LIFETIME CANE COLLECTION OF *Henry Foster*



Kimball M. Sterling, Inc. (TFL-1915)
125 West Market Street
Johnson City, Tennessee 37601
kimballsterling @ earthlink.net
423.928.1471

Photography by James Price

Catalog Design by KT Design, LLC
www.kristaft.com

© Copyright 2014 Kimball M. Sterling, Inc.

www.AuctionAuction.com