

KIMBALL M. STERLING, INC.

Kimball M. Sterling, Inc.
PRESENTS

100 KILLERS

Antique Cane Auction



SATURDAY JULY 7TH, 2007

KIMBALL M. STERLING, INC.
Kimball M. Sterling, Inc.

100 KILLERS
ANTIQUE CANE AUCTION
SATURDAY JULY 7TH, 2007- 11:00 A.M. E.S.T.

PREVIEW
FRIDAY, JULY 6TH - 12:00 P.M. - 4:00 P.M. E.S.T.
OR BY APPOINTMENT THE WEEK BEFORE THE AUCTION

*The auction will be carried live on our website
with our Live Auction Software*

WWW.CANEAUCTION.COM

Kimball M. Sterling Auction Gallery
125 West Market Street Johnson City, Tennessee 37601
kimballsterling @ earthlink.net
423.928.1471

Member National Auctioneers Association



KIMBALL M. STERLING
Kimball M. Sterling

TERMS AND CONDITIONS

1. Cash, check, MasterCard, or Visa. A 15% buyers' premium added to the hammer price as part of the sale price for in-house, phone, and absentee bidders. We reserved the right to hold purchases until the buyers checks clears if buyer is not known by us. Bank letter of credit is acceptable. We do not accept American Express or PayPal.

2. Mail or phone bids are accepted; the firm may require a deposit.

3. Kimball M. Sterling, Inc. has endeavored to catalog and describe the property correctly. All property is sold as is and neither the auction company nor the consignor will be responsible for descriptions, genuineness, provenance or condition of the property. No statement in the catalog made orally at the sale or otherwise shall be deemed to be a warranty, representation, or an assumption of liability. Call for a condition report or email for additional photos.

4. In the event of any dispute between bidders, the auctioneer shall have total discretion to determine the successful bidder, in which his determination shall be final or to re-offer and resale the article in dispute. Title of the item or items purchased by the bidder will pass at the fall of the gavel and declaration of bidder.. This is not an approval auction.

5. Principal auctioneer: Kimball M. Sterling #2467. B. Elizabeth Sterling, auctioneer # 5757. Firm Kimball M Sterling Inc. TFL-1915

6. Bidders may bid live on the Internet by visiting <http://www.auctionauction.com> You may also view the auction at this site and bid by phone.

7. Communications: Telephone 423-928-1471. Fax 423-928-2816. Cellular 423-773-4073, 423-773-4072. Email kimballsterling@earthlink.net

8. Worldwide shipping is available. We encourage you to use United States Mail. Our packing service is free but the buyer must pay postage and insurance fees of their choice.

9. Kimball M. Sterling, Inc. will not be held responsible for bids not received in time for the auction or slow Internet bids. We will not be responsible for items left on our location for over 30 days.

10. Sale will be conducted at 125 West Market Street, Johnson City, Tennessee. 37604. Announcements day of the sale take precedence over pre-sale advertising. Any litigation that pertains to this auction will be conducted in the county of Washington in Tennessee and is agreed upon by registering for this auction.

11. Airport is the Tri-Cities Airport, which is approximately 20 miles from the gallery. Internet catalog and live bidding available at www.auctionauction.com Best Western Hotel: 423-282-2126. A very fine hotel which offers Sterling Auction a discount rate is the Carnegie Hotel 1216 W State of Franklin Rd, (423) 979-6400

12. Please call for condition report on sale lots or email us. We do send out multiple photos by email of any lot in the auction .By registering for this auction you accept the terms and give Kimball M. Sterling auctions the right to charge your credit card on file for purchases and shipping, which you have entered on your registration.

13. The auction will be conducted on Saturday July 7th at 11:00 Eastern time in our gallery and also live on the net.

14. Parking service is free.



1. MEISSEN PORCELAIN DRESS

Mid 19th Century-A mint condition example of this fine porcelain factory, gold filled ½” collar, hardwood exotic shaft and a 1 ½” bone ferrule - OL 37” H 3 ½” x 2 ¼”

\$2000-\$3000





2. SOLID GOLD MINERS CAMP

19th Century-A very unusual pictorial of a miner's camp with actual gold nuggets applied to the stream. Rose and green gold both are used for the mountains and rose gold for the late afternoon sky. The sides of the handle are carved in nugget forms. It has a rich Malacca shaft and a 2" horn ferrule - OL 33 ¾" H 1" x 1"

\$2500-\$3500



3. CONTINENTAL IVORY

Circa 1780-Carved ivory knob which attaches to a spool carved hardwood exotic shaft, a pair of ivory eyelets and a 3 ¾" forged iron ferrule-OL 36" H 1 ¼" x 1 ½"

\$1000-\$2000



4. FRENCH GOLD DRESS

Mid 19th Century-A signed 18K gold fancy dress handle, exotic wood shaft and a 1" horn ferrule - OL 34 ½" H 2 ¼" x 7/8"

\$800-\$1200



5. PUSH-UP CANDLE

A period brass system stick with a patent applied for date of 1887, a faux bamboo hardwood ebonized shaft and a 1 1/2" bi-metal ferrule-OL 33 1/2" H 3 7/8" x 3 7/8"

\$1000-\$1500





6. GOLD DOG PRESENTATION

Circa 1901-The handle is tested 14K and the eyes have small rose cut diamonds. The presentation was to the Honorable E. J. Magerstadt. He was the court clerk in Cook County in Illinois and also a delegate to an early Republican Convention. He is also very well known for building his home "Poppy House" and he later became the tax collector for Chicago. It has an original ebony shaft and a 2" bi-metal ferrule - OL 35 ½" H 1" x 1 ¼"

\$1000-\$1500

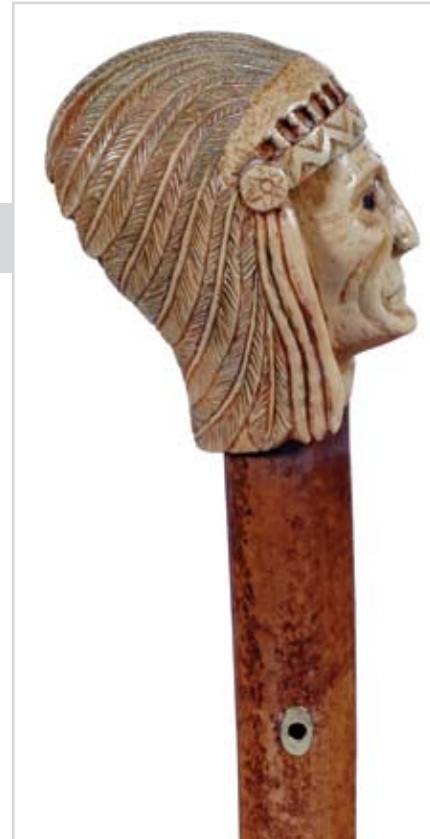
7. EUROPEAN SILVER DRESS

Late 18th Century-An early chased coin silver handle with no hallmarks, silver eyelet's, Malacca shaft and a 7 ½" brass ferrule. This is a very fine and pure original stick - OL 37 ½" H 1 ¼" x 1 7/8"

\$1000-\$1500



8. IVORY STANHOPE INDIAN



Late 19th Century-A carved and polychromed ivory Native American Chief in full headdress, a pair of gold eyelet's, natural Malacca shaft and 1 ½" horn ferrule. The Stanhope photo is viewed in an eyelet and is entitled "Geronimo". The photo shows him on one knee holding a rifle - OL 35 7/8" H 3" x 3"

\$2000-\$3000



9. CAT AND MOUSE

Circa 1880-A carved one-piece handle of a cat with glass eyes perched ready to pounce upon a gold dore' bronze mouse. The hardwood shaft is attached to the handle by a very ornate gold filled collar. It has a 1" bi-metal ferrule - OL 36" H 3 1/2" x 3 7/8"

\$1000-\$1500



10. CARVED NAUTICAL



Mid 19th Century-A diminutive example of a Nautical cane with two baleen spacers and a half hexagonal whalebone shaft - OL 34 1/2" H 2" x 1 5/8"

\$700-\$1200



11. GAMBLER'S IVORY

Late 19th Century-A carved ivory dice with abalone inserts, a fine ebony shaft and a 1" bi-metal ferrule-OL 36" H 1 3/8" x 1 7/8"

\$800-\$1200



12. NAUTICAL KNOT CRUTCH

Mid 19th Century-A sailor's masterpiece. The rope has been protected over the years with a thin coat of shellac. It has a 1" bi-metal ferrule. On a scale of 1 to 10 we would grade this a 9.5 in rarity and condition-OL 35 ½"

\$1500-\$2500



13. PRIMITIVE FOLK-ART DOG

Late 19th Century-A massive and primitive folk carved one-piece cane with applied ears. The head is 6" x 5" and it has no ferrule - OL 40"

\$600-\$800



14. IVORY NAUTICAL

Mid 19th Century-A diminutive carved ivory handle with two silver nails in the handle and a whale bone shaft-OL 35 1/2" H 1 5/8" x 7/8"

\$600-\$800



15. CARVED BONE

Circa 1840- Massive high relief carved bone handle with ivory eyelets and sash. The Mallacca shaft has a 2" bone ferrule.
OL 36" H- 3 ¼" x 1 ¾"

\$800-\$1200



16. CARVED GLOVE HOLDER

Late 19th Century-Carved with two color glass eyes and a lower jaw which drops with a push of a button. The silver collar has British hallmarks, exotic wood shaft and a 3 ¼" brass ferrule-
OL 34 ¼" H 1 ¼" x 2 ¼"

\$500-\$1000

17.

NAUTICAL KNOT

Mid 19th Century-This scrimshaw cane has a 1 3/4" x 1 3/4" finely carved handle which is attached to a 7/8" diameter whalebone shaft with a 1/2" copper ferrule-OL 32 7/8"

— \$3500-\$4000





18. EROTIC PAIR

Circa 1885- His and hers carved ivory. His handle is 3" x 1 1/4" and hers is 2 1/4" x 2". Both have hardwood shafts/ OL- 34 1/2" (his), 34 1/2"

\$5000-\$7000





19.

CORAL OF THREE IVORY HORSES

Circa 1880- Largest is 5" x 1 1/2" and all have silver bridles with signed silver collars, two color glass eyes, and the smallest is a whopping 4" 1 1/4" The ferrules are all there and the shafts are tops. OL average is 34 1/2"

\$5000-\$6500





20. FRENCH GLASS DRESS

Circa 1830-A very rare and early French glass portrait handle which is attached to a Malacca shaft of the same period with a 1 ½" scalloped collar. It has a 2" spear shaped brass ferrule and it is in very fine, unchipped, and unbroken condition - OL 34 ¾" H 1 ¼ x 1 ¾"

\$1500-\$2500



21. CORKSCREW DOG

An Austrian carved dog with two-color glass eyes and a carved and painted mouth. It has a leather dog collar with a brass buckle and a 2" horn spacer. By unscrewing the handle an early cork screw appears. The shaft is hardwood and it has a 1" metal ferrule - OL 34 ¼" H 2" x 5"

\$800-\$1200





22. NAUTICAL WHALEBONE



Dated 1822-Very nice carved handle attached to a whalebone shaft with a silver collar which is dated 1822. It has a pair of silver eye-let's and a pair of cross-hatched carvings on the whalebone shaft-OL 35 ¾" H 2 ½" x 1 ½"

\$2000-\$3000

23. ASIAN IVORY

Menji Period-Rats with glass eyes holding what appears to be some type of gourd, mixed metal ornate collar with decorated fruits, vegetables and leaves, ebonized shaft and a horn ferrule-OL 37" H 3" x 1 ½"

\$1500-\$2500

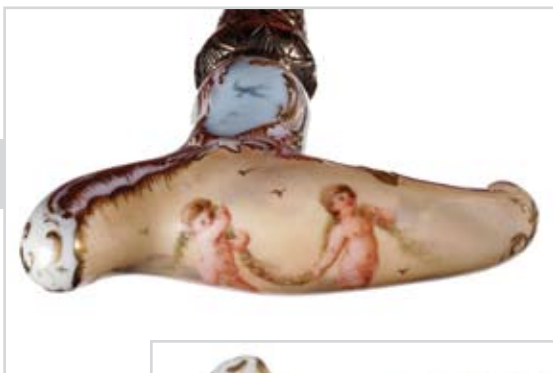


24. EROTIC IVORY

Dated 1840-A carved ivory handle with gold mounts and a carved gold collar. It has a pair of ornate gold eyelet's and a dated, ornate gold collar. The cane has no ferrule but has a metal spike in the end to prevent it from wearing -
OL 37 ½" H 4" x 1 ¼"

\$5000-\$8000





25. PORCELAIN DRESS

Circa 1860-A very fine porcelain handle with a pair of full-figured portraits and birds, an ornate gold filled collar, an ebony shaft and a 2" horn ferrule-OL 34" H 4" x 2 1/2"

\$500-\$1000



26. CARVED AMERICAN EAGLE

Mid 19th Century-A very fine carved and stylized carved eagle with two-color glass eyes. It is a one-piece stick with a 1/2" silver collar and a 1 1/2" bi-metal ferrule-OL 37" H 3" x 3"

\$1000-\$1500





27. EROTIC PERFUME SPRAYER

Mid 19th Century-A heavy silver handle of a provocative and not too attractive lady adorned with scarves and a headdress. The headdress doubles as a mid-section of a female body. By pressing the button on the shaft perfume is dispensed from between the legs. This cane was more than likely the prized possession of an early madam. It has a nice ebony shaft, a 1/2" silver collar and a 1 1/2" horn ferrule-OL 36 1/2" H 2 1/4" x 1 1/4"

\$2500-\$3500



28. COMBINATION SYSTEM STICK

Mid 19th Century-This gold watch and dragon shaped dagger cane has all silver mounts with French hallmarks. By pushing the button on the handle an early silver faced watch is exposed and then by depressing the button on the silver collar a 7" dagger in the shape of a dragon with oriental characters appears. The bamboo shaft is carved with owls, trees and fish. The shaft has one bamboo split and it also has a 3" silver and brass ferrule-OL 36 1/2" H 5" x 2"

— \$3500-\$4500





29. CARVED IVORY OWLS

19th Century-A very large carved ivory handle with a family of six owls sitting on a limb. There are some branches carved on the handle in suite with the $\frac{3}{4}$ " signed sterling collar. This is a very fine and unusual American cane with an exotic wood shaft and a 1" metal ferrule-OL 36 $\frac{1}{2}$ " H 4 $\frac{1}{2}$ " x 1 $\frac{3}{4}$ "

\$2000-\$3000





30. AUTOMATED KITTY

Circa 1910 - An original painted cat with two-color glass eyes. By pressing the button on the lower jaw the mouth opens and the ears turn. It has a metal collar, an ebony shaft and 1 ½" horn ferrule-OL 37"
H 2 ¼" x 4 ¼"

— \$2000-\$2500





31. LARGE IVORY SKULL

Dated 1851-A very sinister skull with a snake carved throughout which is peeking from behind the jaw. The cane is inscribed on the top "Memeto Mori" within a border which also has four crossbones and a family crest with carved swords, drums and skull. The cross bones are signed R.T. and dated 1851. It has a silver handmade collar, original sash, Malacca shaft and a 1" brass ferrule - OL 36" H 2" x 2"

\$2500-\$3500

32. IVORY ABE LINCOLN

Late 19th Century-A full standing, carved Abraham Lincoln in a waistcoat. The handle is inscribed "Abraham Lincoln". It has a metal collar with an inscription, a Malacca shaft and a 1" metal ferrule-OL 36 ½" H 4 ¼" x 1 ½"

\$2000-\$3000



33. CARVED IVORY INDIAN

Circa 1870-A carved ivory chief with neck band and silver collar. It has a rich Malacca shaft and a 1 ½" metal ferrule. There is an ivory striation of about 1" on the right side of the feathers-OL 32 ½" H 1 ¾" x 3 7/8"

\$2000-\$3000





34. IVORY SWORD CANE

Dated 1881-A massive carving of an American bald eagle fighting the Mexican rattlesnake. This was a popular decorative theme used on guns, swords, etc. during the American Mexican war for Texas separation from Mexico. The snake and eagle have glass eyes, a fine etched blade with early Toledo markings, ornate silver collar with date and an etched blade. The ebonized shaft has a 1" brass ferrule and the blade is 23"-OL 32 1/2" H 1 1/2" x 4"

\$3500-\$4000



35. RONSON LIGHTER SYSTEM STICK

Early 20th Century-This is the top of the line as far as lighter canes go. It is in near mint condition and working condition. The butterscotch handle is attached to an ebonized shaft by a gold collar and the cane has a 2" bone ferrule - OL 36" H 1 ½ x 1"

————— \$6000-\$8000





36. CARVED IVORY HUMAN RACE CANE

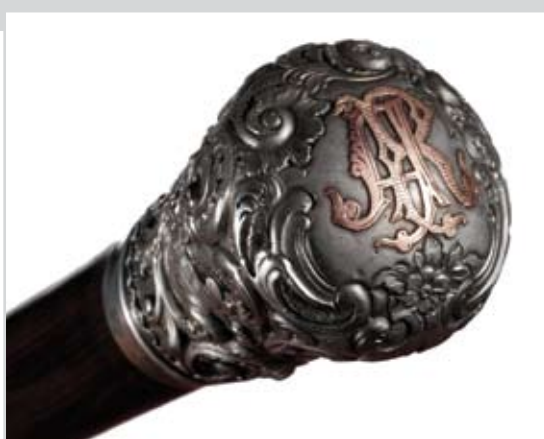
Circa 1870-This cane depicts Asians, Blacks, Native American and Anglo Saxon. All faces have two color glass eyes and have some polychrome work. A signed 1 ½" silver collar, snake wood shaft and a 1 ½" multi colored horn ferrule-OL 35 ½" H 1 7/8" x 1 7/8"

\$1500-\$2500

37. ORNATE SILVER DRESS

Victorian-A very smart and sassy silver dress with the image of a swallow. The cane is overlaid on the top with the gold initials R. A. It has a pair of silver eyelet's, a rich Mahogany shaft and a 1" brass ferrule-OL 33 7/8" H 1 3/8" x 2"

\$500-\$1000





38. FINE FOLK-ART

Late 19th Century-A carved one-piece Odd Fellows lodge cane with a carved and polychrome snake, a hand with a heart in the palm, a bow with two arrows and an all seeing eye. Much of the original paint appears in tact in this cane. It has a ½" brass ferrule-OL 35"

\$1000-\$1200



39. CARVED IVORY

Mid 19th Century-A carved pistol grip handle with a coat of arms and a 5 pointed crown. It has three carved initials within the shield and an ebony shaft with a 3" ivory and brass ferrule-OL 33 7/8" H 1 ½" x 4 ¾"

\$800-\$1200



40. CARVED FIGURAL IVORY

19th Century-A hunter carrying a long gun is perched upon a tree as if he has just pulled a large bird from a hiding place. The hiding place has another bird of the same type perched and ready to fly. It has an ornate 1" silver collar, a Malacca shaft and a 2" ivory ferrule. This handle is very finely carved-OL 35 ¼" H 1 5/8" x 5"

\$1000-\$1500



41. MASSIVE CARVED IVORY

Circa 1875-A comical carving of three monkeys in the hear no evil, speak no evil and see no evil poses. The massive handle is signed in ink on the rear with the initials E.R. and it has a signed ¾" sterling collar. The shaft is a rich snake wood and it has a 1" bone ferrule - OL 37" H 5 ¼" x 1 ¾"

\$2000-\$2500



42. CARVED IVORY DOG

Victorian-A very finely carved dog, dagger, hunt pouch and horn. Attached by a signed sterling collar to an exotic wood shaft with a 1" copper ferrule-OL 36" H 4" x 4 1/4"

\$800-\$1200



43. SILVER FROG

1880-A very finely crafted frog with web feet setting upon what appears to be a rock which is supported by lily pad leaves. The cane has a rosewood shaft and a 1" metal ferrule-OL 36" H 2" x 2"

\$1500-\$2500



44. TORTOISE DRESS

Mid 19th Century-A fine full shell cane with a 1" copper ferrule. The gold filled ornate handle is signed "R. F. G. and Co." and is hand hammered with ornate scroll designs-OL 34 3/4" H 1" x 1 3/4"

\$1800-\$2500



45. CARVED IVORY NAUTICAL

Circa 1860-A massive carved handle with acorns and oak leafs with an ornate gold filled collar, signed "Hull". A very rare one piece elephant ivory tusk shaft with a small bow in it and a brass ferrule. There are two small chips on the underside of the handle but not annoying to this wonderful cane-OL 34" H 4 1/2" x 1 1/2"

\$1500-\$2500



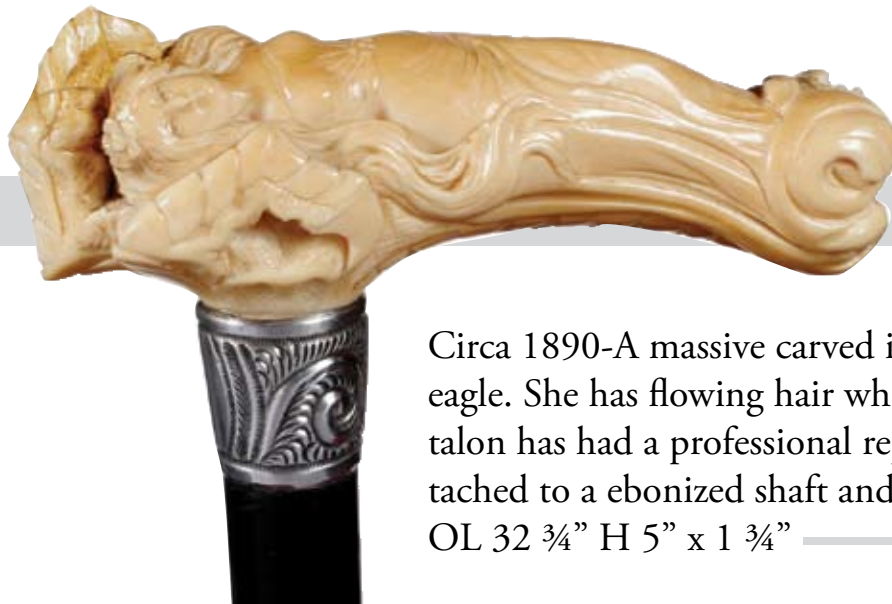
46. SILVER AND IVORY GATOR

Circa 1880-A silver gator with ivory teeth and mouth attached to a ivory handle. A signed sterling ornate 1/2" collar, exotic wood shaft and a 1" bi-metal ferrule. The gator's tail wraps completely under the ivory handle and the gator also appears to have ivory eyes-OL 35" H 4 1/2" x 1 5/8"

\$1500-\$2500



47. ART NOUVEAU IVORY



Circa 1890-A massive carved ivory lady lying in the talons of an eagle. She has flowing hair which reaches mid thigh. The center talon has had a professional repair. A 1" ornate silver collar is attached to a ebonized shaft and a bi-metal ferrule -

OL 32 ¾" H 5" x 1 ¾"

\$1500-\$3000



48. TORTOISE DRESS

Mid 19th Century-A very fine full shell shaft with a solid gold handle and scalloped collar. It has a 1" metal ferrule and is monogrammed. Both handle and collar are marked solid gold-OL 33 ½" H 1" x ¾"

\$2000-\$3000





49. FOLK PRESENTATION

Late 19th Century-A finely carved folk cane with a blank cartouche which was never inscribed, a silver handle and a 1 ½" bi-metal ferrule. It is more than likely an American lodge cane and a very fine example of that genre. OL 36" H 1" x 1 ¼"

\$1200-\$1500



50. CARVED MONKEY AUTOMATION

19th Century-By pressing the button on the rear of the head the eyes change to red and the tongue sticks out. The carving has an age crack which is very visible in the photographs. It has a signed sterling collar, an ebony shaft and a metal ferrule. It is in working condition-OL 34" H 2 ¼" x 2"

\$1000-\$1500





51. SCRIMSHAW IVORY

Mid 19th Century-An ivory hand holding an ivory ball which is attached to a whalebone shaft with two baleen spacers. It has a period brass 1" ferrule and the diameter of the shaft is $\frac{3}{4}$ " inch at the top-OL 34 $\frac{1}{2}$ " H 4" x 1 $\frac{1}{4}$ "

————— \$3500-\$4000



52. CARVED DOG

Late 19th Century-A European carved dog with two color glass eyes and a pair of silver eyelets attached to a chamfered shaft with a 2" horn ferrule-OL 37 $\frac{1}{2}$ " H 2 $\frac{3}{4}$ " x 4"

————— \$600-\$1200



53. UNCLE SAM IVORY SNUFF BOX

19th Century-A very finely carved Uncle Sam with polychrome highlights. The top of the hat is hinged and opens up for the snuff compartment. It has an exotic hardwood shaft, an ivory spacer and an ivory ferrule-OL 31 $\frac{3}{4}$ " H 3" x 1 $\frac{1}{2}$ "

\$2500-\$3500



54. IVORY AUTOMATION MONKEY

19th Century-This figure has a ivory hat and a lever on the shaft, when depressed will move the eyes and the mouth of the carved monkey. It has a hardwood shaft and a 1" brass ferrule-OL 33 $\frac{1}{2}$ " H 1 $\frac{5}{8}$ " x 1 $\frac{3}{4}$ "

\$2000-\$2500

55. APHRODITE MASSIVE IVORY

Early 19th Century-This very finely carved pistol grip handle depicts a carving of the Goddess of Love and is done in the hand of a very fine artist with much detail. It has some age striations throughout the handle and a belt and buckle collar. The shaft is honey Malacca and the ferrule is a 2" ivory-OL 35 ½" H 10 ½" x 2 1/8"

\$3500-\$4500



56. IVORY AND HORN SAFARI

Late 19th Century-A massive elephant ivory handle attached to an natural horn with a 1" horn ferrule-OL 34 ¼" H 2 ½" x 2 ¼"

\$1000-\$2000



57. HOLUSKA WATCH

Circa 1875-This Austrian watch system stick is in original working condition and it also keeps time. It has a silver handle and a Malacca shaft with a metal ferrule-OL 35 ½" H 1" x 1"

\$1500-\$2500



58. GOLD HOLLOW GLASS

Late 19th Century-A blown glass hollow stick with a gold interior and a cobalt blue and burgundy paint thread throughout. A small but not annoying broken tip-OL 38 ½"



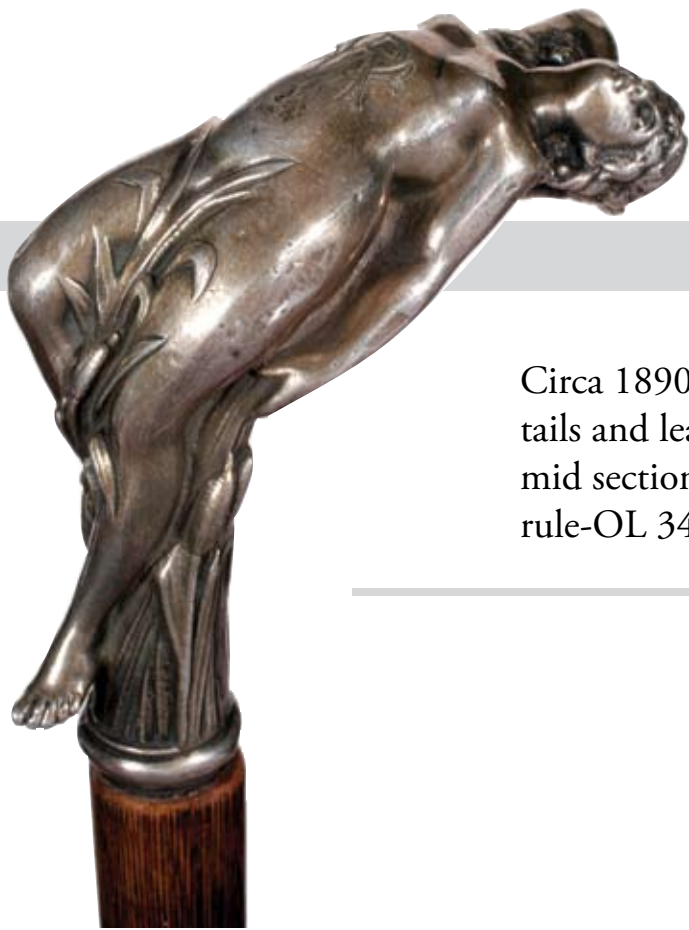
\$500-\$1000

59. FRENCH ENAMEL AND SILVER

Circa 1895-Guilloche enamel is decorated in rose-colored cyclamen blossoms with green foliage on a stark white background. There are tiny French hallmarks. It is in excellent condition with an ebonized shaft and a horn ferrule. The OL is 35 ¾" H 2 ½" x 1 ½"

\$1700-\$1900





60. ART NOUVEAU SILVER

Circa 1890-A very exotic female nude perched in cat-tails and leaves. She has a monogram of "R. W." on her mid section. The exotic wood shaft has a 1" metal ferrule-OL 34" H 3 1/4" x 3"

\$1000-\$1500

61. FOLK-ART DOG

Circa 1900-A massive painted and carved canine head with two color glass eyes and a studded and locked collar. This cane is from the former collection of James Richardson of Rhode Island whose collection was commented upon in the book "Romance Behind Walking Canes" on page 35. The handle is attached to a hardwood shaft and a 1 1/2" metal ferrule. - OL 38" H 4" x 5"



\$1000-\$2000



62. UNUSUAL VIENNESE DRESS

Second Half of the 19th Century- This cane depicts a large silver snake which is about to attack an unaware carved hippo ivory cat. It is chased and engraved with fantastic detail. The handle also has Austria-Hungarian hallmarks of the period. The shaft is a very rich snakewood and it has 2" bone ferrule. It is in excellent condition-OL 36" H 5 ¾" x 3 ¼"

\$1600-\$1800



63. PORCELAIN DRESS

Circa 1870-A porcelain knob with two ornate gold collars which are attached to an exotic wood shaft. The porcelain handle is probably Martin Brothers of England. It has the appearance of fine export porcelain and it also has a 1" bi-metal ferrule-OL 37" H 1 5/8" x 3 ½"

\$600-\$1200



64. FABULOUS ALL-GARNET DRESS

Circa 1900-The handle is entirely encrusted with hundreds of deep red, rose cut garnets of varying sizes. They are set among tiny silver beads. This beautiful and especially eye appealing cane was made in Prague. It has a thin ebony shaft and a $\frac{3}{4}$ " metal ferrule-OL 35 $\frac{1}{4}$ " H 2 $\frac{1}{4}$ " x $\frac{3}{4}$ "

\$2300-\$2700



65. "MIND YOUR OWN BUSINESS"

Mid 19th Century-A large walrus ivory handle on a stepped Partridge wood shaft with a finely engraved silver collar and metal ferrule. This cane depicts a woman's arm and hand squeezing a gentleman's nose in the "Mind your own business" mode. The carving is beautifully rendered with a fine patina. OL 37 $\frac{3}{4}$ " H 4 $\frac{1}{2}$ " x 4 $\frac{1}{2}$ "

\$1700-\$2000



66. GORHAM SILVER DRESS

Circa 1885-There is a silver baboon reaching into a tree which has a hidden compartment in the rear with coiled snakes. It is a presentation cane to a Colonel and is also signed and hall-marked. It has an exotic wood shaft and a 2" bi-metal ferrule-OL 36" H 3" x 3 3/4"

\$800-\$1200



67. LES ECUREUILS

Circa 1900-This French cane has a carved ivory squirrel passing through the shaft with glass eyes. It has 1 1/2" metal ferrule and an interesting found burl and twig shaft. The squirrel is 2" x 1 1/4"-OL 36"

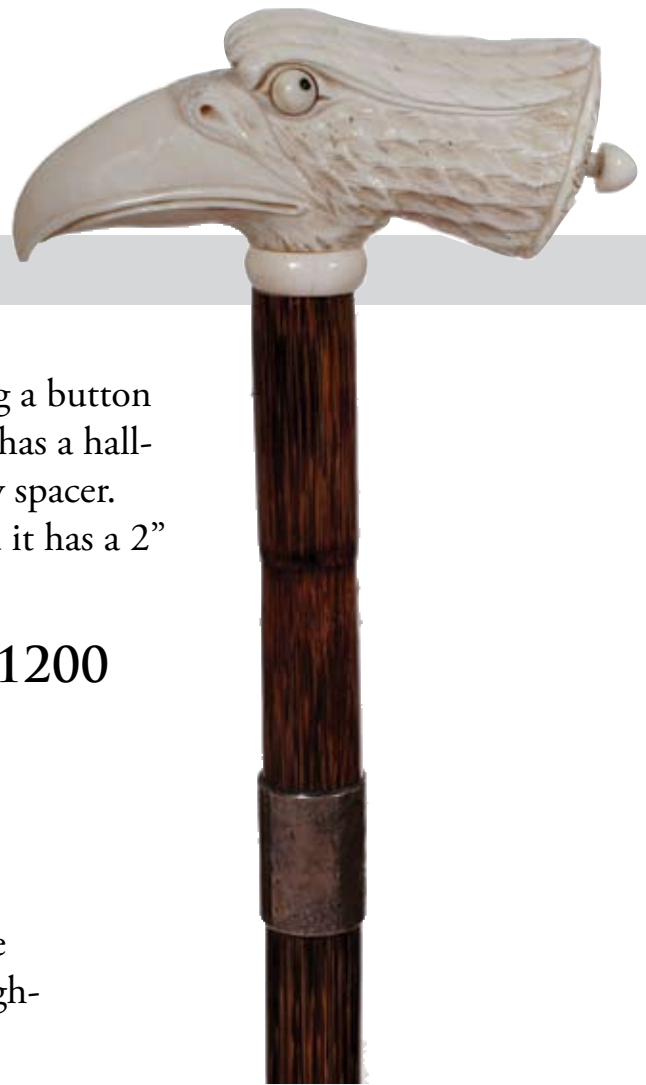
\$600-\$1000



68. IVORY EAGLE AUTOMATION

Circa 1880-This automation works by pulling a button on the rear of the handle and the eyes roll. It has a hall-marked silver presentation collar and an ivory spacer. The shaft is faux bamboo partridge wood and it has a 2" bone ferrule-OL 34" H 4" x 1 1/2"

\$800-\$1200



69. VIKING GLASS

Circa 1930-A twisted solid clear glass cane with a thread of ruby glass running throughout. Fine condition-OL 42"

\$400-\$800



70. CARVED IVORY BASKET

Circa 1840-A finely carved fruit basket attached to a rich Malacca shaft by a 1 3/4" ornate brass collar. The cane has no ferrule-OL 36" H 2" x 1 3/4"

\$800-\$1500





71. DAY'S PATENT PERCUSSION CANE GUN

Mid 19th century- This example is in a rich mahogany case. The stock has not been refinished as most have. It has cane two barrels with plug ferrules and all of the accouterments. Also there is a 5" pistol barrel for use as a hand-gun only. This is a museum quality example OL-34 ½" h-6" x 3 ½"

\$8000-\$12000



72. RARE SALESMAN'S SAMPLE WITH ROTHCHILD

Circa 1860-It is our opinion that this massive carved dog with ivory tipped ears would have been a salesman's sample to preview smaller types of these coming to market. It has perfectly

matched two color glass

eyes, a lever

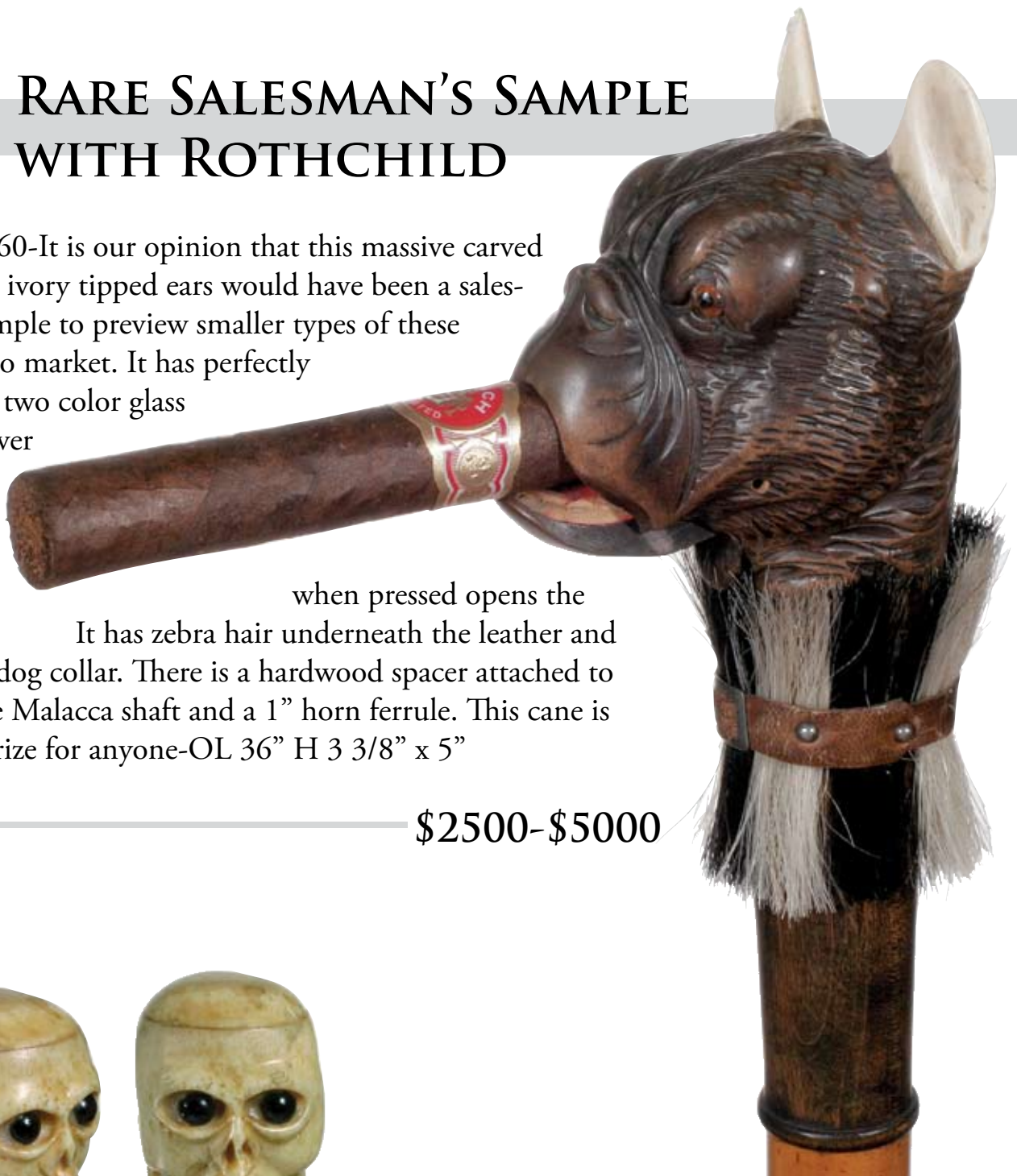
near

the

throat

which

mouth. It has zebra hair underneath the leather and studded dog collar. There is a hardwood spacer attached to a massive Malacca shaft and a 1" horn ferrule. This cane is truly a prize for anyone-OL 36" H 3 3/8" x 5"



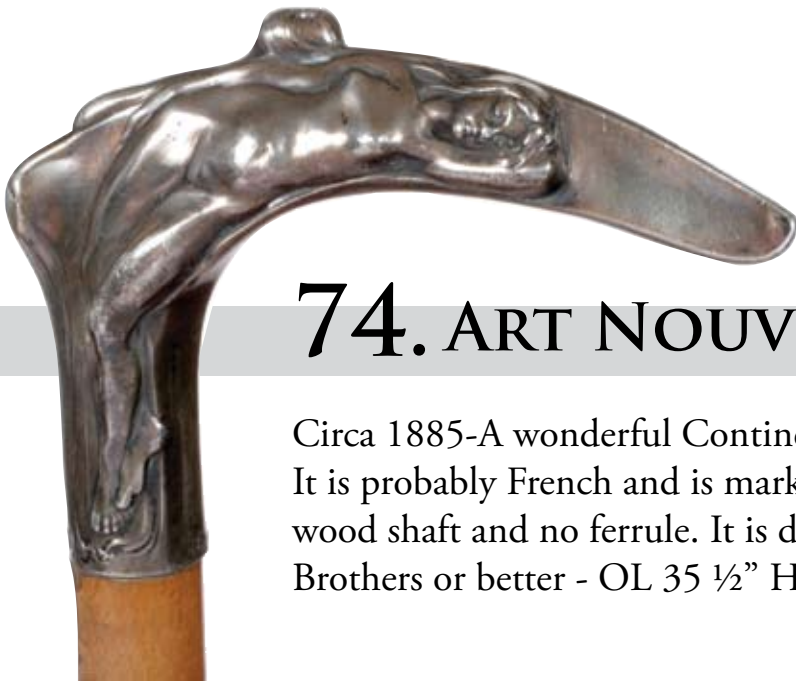
\$2500-\$5000



73. BONE SKULL

Circa 1860-A carved bone skull handle with glass eyes attached to a whale bone and baleen spacer which is connected to an exotic wood shaft. It has a 1 1/2" bone ferrule-OL 36 1/4" H 3 1/2" - 1 1/2"

\$1000-\$1500



74. ART NOUVEAU SILVER

Circa 1885-A wonderful Continental, silver nude and Satyr. It is probably French and is marked 900 silver. It has a hardwood shaft and no ferrule. It is done in the style of Unger Brothers or better - OL 35 ½" H 4 ¾" x 3"

\$1000-\$2000

75. BARBED WIRE

Late 19th Century-These canes were given as premiums to merchants who ordered box cars from Hash Brothers Wire Company in Illinois. It is all original and in very nice condition-OL 35"

\$1200-\$1800



76.

MASSIVE SILVER AND GOLD

Circa 1810- A massive handle with silver and gold work throughout. It is in near mint condition with an ornate collar and ferrule. It has a large honey Mallacca shaft, 2 ½" ferrule and is probably French. The photos speak for themselves. –OL 38" H 3 1/2" x 2"

\$2500-\$3500





77. IVORY NAUTICAL

Circa 1850-Full twisted whalebone shaft with a knob handle which has a shell inlay. The shaft has a small bend. There is damage to all three of the ivory rings around the handle. OL-33 1/4" H- 2 1/2"x 1 3/4"

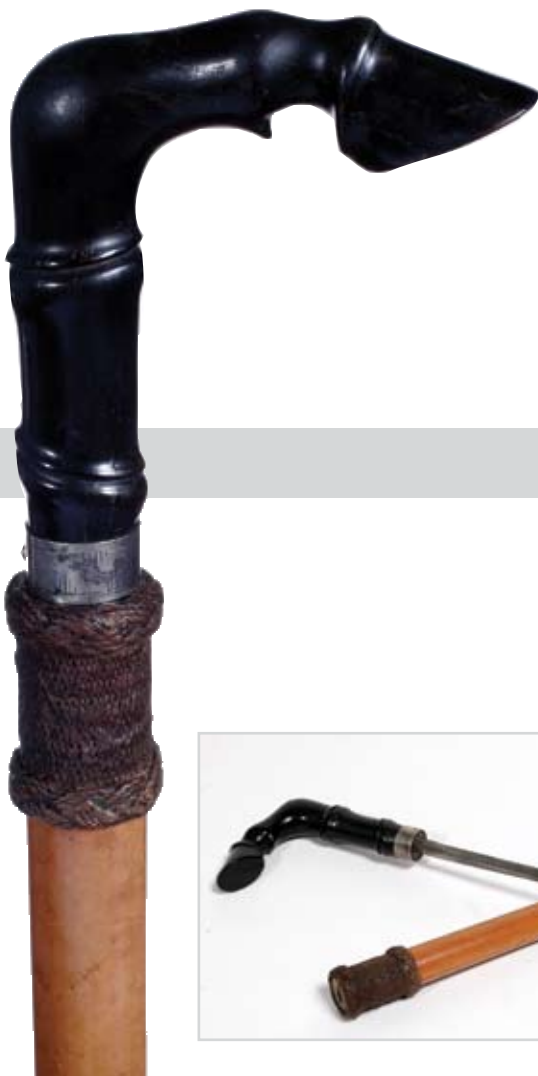
\$2000-\$3000



78. COURT CANE

Circa 1740-An ivory handle which is attached to a two-piece Malacca stepped shaft with a coin silver collar, two silver eyelet's and a 5" brass ferrule-OL 35" H 1 ½" x 1 ¼"

\$700-\$1200



79. HOOF SWORD CANE

Circa 1870-Massive carved horn hoofed handle, silver collar, push button release and a 11 ½" four-sided engraved blade. The Malacca shaft has a woven rope collar and a 1 ½" horn ferrule-OL 36" H 4" x 4"

\$1000-\$1500



80. CARVED IVORY DOG

Circa 1880-The ivory dog has two color glass eyes , a Malacca shaft and a 1" horn ferrule and a 1 ½" 14K gold collar-OL 37 ½" H 2 ½" x 1 ¾"

\$1000-\$1500



81. IVORY ROYAL GUARD

Circa 1890-Carved ivory guard, a ¾" silver collar, rich snakewood shaft and a bi-metal ferrule-OL 34" H 4 ¾" x 1 ¼"

\$500-\$1000



82. IVORY HORSE

Circa 1880-Carved ivory horse with two color glass eyes, an ornate ½” silver collar which is attached to a Malacca shaft with a 1” metal ferule-OL 34 ½” H 4” x 1 3/8”

\$1200-\$1500



83. SILVER DRESS

Circa 1890-A silver handle depicting St. George slaying the dragon, rich snake-wood shaft and a 1” horn ferrule-OL 35” H 4” x 2”

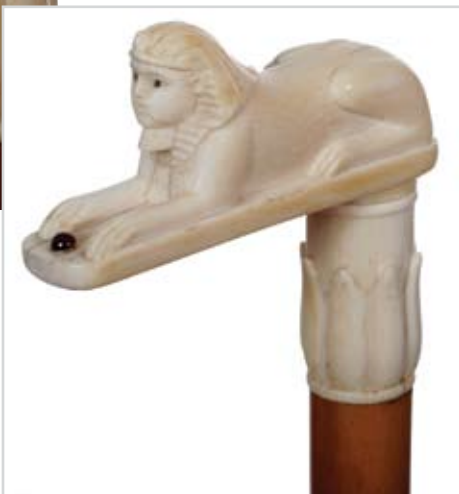
\$700-\$1200



84. IVORY GATOR

Circa 1880-A carved ivory gator with two color glass eyes, a ½” silver collar, exotic wood shaft with a 2” horn ferrule. On the left side of the back tail there is a small piece missing or maybe it's a bite from another gator.-OL 36”
H 4” x 1 ¾”

\$500-\$1000



85. IVORY SPHINX

Circa 1890-A carved ivory Sphinx with painted eyes and a garnet cabochon between the front feet. It has a lotus carved ivory collar, a Malacca shaft and a 1 ½” ivory ferrule-OL 34 ½” H 4” x 3”

\$500-\$1000

86. IVORY HARE

Victorian-A very finely carved rabbit with two color glass eyes, an ornate silver collar, exotic wood shaft and a 1" horn ferrule -
OL 35" H 4 1/2" x 1 1/2"

\$800-\$1200



87. IVORY MOTHER AND CHILD

Circa 1875-A loving mother monkey picking bugs from her babies back. Two color glass eyes and a rich Malacca shaft with a 1" metal ferrule -
OL 36" H 2 3/4" x 1 1/2"

\$800-\$1200





88. IVORY SNAKE

Circa 1900-The handle has a carved ivory snake with two color glass eyes and also a gold snake which entwines the handle and the gold collar. The cane has an ebony shaft and a 1" ebony ferrule - OL 35 1/2" H 4 1/4" x 1 1/4"

\$1000-\$2000

89. NAUTICAL FOLK-ART SAILOR

Circa 1850-A nice nautical carving of a sailor in his hat attached to Malacca shaft with a 1" brass ferrule. There is some inked scrimshaw work as hair-OL 34" H 3" x 1 1/2"

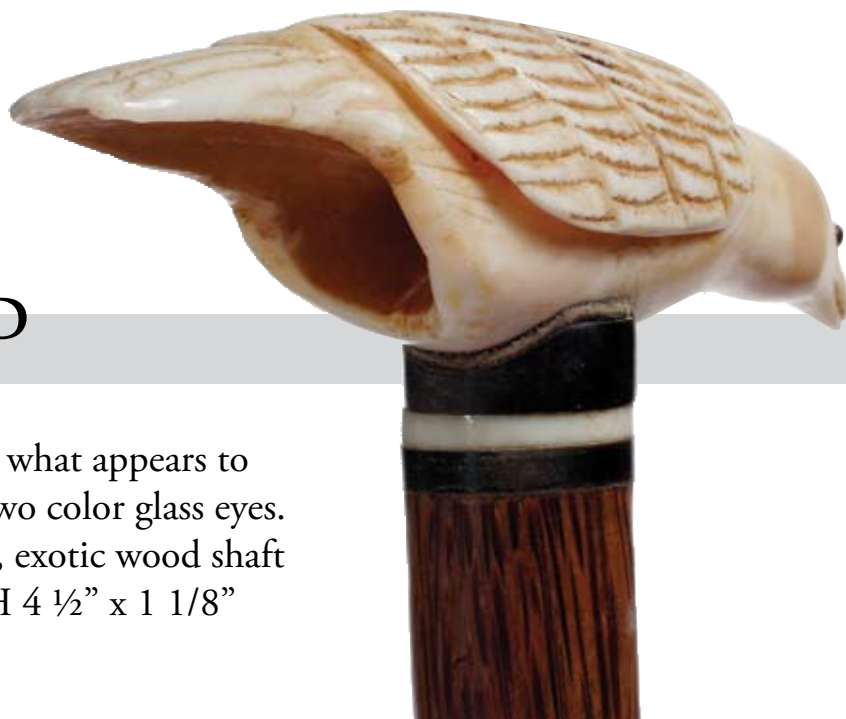
\$700-\$1200



90. NAUTICAL BIRD

Circa 1850-A bird carved from what appears to be a sperm whales tooth with two color glass eyes. It has a baleen and ivory spacer, exotic wood shaft and 1" metal ferrule-OL 35" H 4 1/2" x 1 1/8"

\$800-\$1200

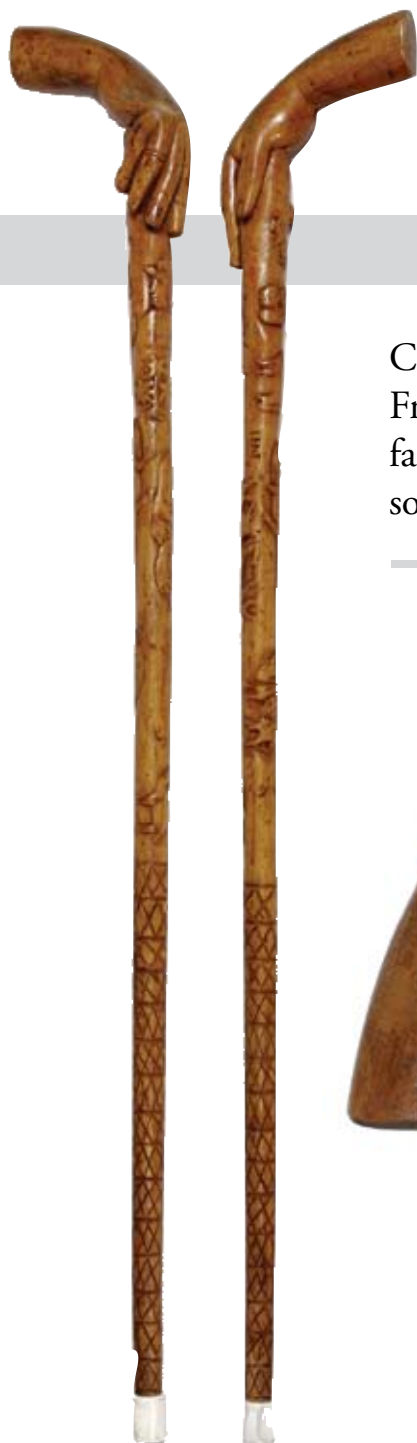


91. FRENCH GOLD DRESS

Circa 1825-This solid gold period handle is attached to a rich snake wood shaft and 1 1/2" bi-metal ferrule-OL 35" H 7/8" x 1 5/8"

\$500-\$1000





92. FOLK-ART HAND

Circa 1931-A very fine carved one-piece folk-art stick by Frank Rice. It has relief carvings of animals including buffalo, kangaroos, dogs and much more. Original patina with some polychrome-OL 34 1/2"

\$1000-\$1500



93. STAINED IVORY

Circa 1880-A Belgium carved and stained ivory handle which depicts a local farm scene. It has original wrist loop and tassel. It has an exotic wood shaft with an ivory spacer and a small ivory ferrule-OL 37 ½" H 1 ¼" x 2 ½"

\$500-\$1000



94. ENGINEER'S SYSTEM STICK

Circa 1890-This cane has a circular slide rule with a patent date of 1890 by King. Very fine condition with a hardwood shaft and a brass 1" ferrule-OL 35 ½" H 6" x 1 ¼"

\$900-\$1200





95. FOLK-ART STORY

Circa 1900-A fine folk-art with shields, anchors, hearts, animals and various other designs. It has an applied hardwood, knob handle. Some polychrome still visible-OL 35 1/4" H 1 3/4" x 2"

\$500-\$1000



96. KOMI DAMASCENE

Circa 1900-This type of work from the Far East is gold over various other metals. It has a ebony shaft and a 1" metal ferrule-OL 34" H 1 ¼" x 2"

— \$500-\$1000



97. IVORY ROOSTER

Circa 1870-This rooster has two color glass eyes, a small silver collar and a rosewood shaft with an original metal ferrule-OL 34 ½" H 2" x 2"

— \$500-\$1000





98. IVORY NAUTICAL LEG

Circa 1850-The leg is attached to a whalebone shaft and it has an ivory belted collar. The handle is in two pieces and is attached firmly-OL 36" H 4" x 2 5/8"

\$2000-\$3000



99. SILVER SNAKE AND TUSK

Circa 2004-This contemporary masterpiece is from the shop of C. W. Daugherty and is one of the finest contemporary crafted canes on the market today. All of his canes are hallmarked now with the initials C.W.D. It has a group of silver skulls for a collar, a very rich and definite snake wood shaft with a 2" ivory ferrule. - OL 37 ½" H 5" x 4"

\$800-\$1200



100.

MECHANICAL MONKEY



19th Century-A French made automaton with two-color glass eyes, painted mouth and tongue and downward push lever, original silver paint and bamboo shaft with horn ferrule, working condition-OL 36" H 2 5/8" x 2 1/8"

\$800-\$1200





Kimball M. Sterling Auction Gallery
125 West Market Street Johnson City, Tennessee 37601
kimballsterling @ earthlink.net
423.928.1471

Member National Auctioneers Association

Photography by James Price
Catalog Design by KT Designs Inc. - www.kristaft.com