

KIMBALL AND VICTORIA STERLING PRESENT
JOHNNY WINTER
CANE COLLECTION
PLUS SELECTIVE CONSIGNMENTS



SATURDAY,
MARCH 26TH
12:00 NOON EST

KIMBALL AND VICTORIA STERLING PRESENT

JOHNNY WINTER CANE COLLECTION

PLUS SELECTIVE CONSIGNMENTS

SATURDAY,
MARCH 26TH
12:00 NOON EST

LIVE ON THE INTERNET AT
LIVEAUCTIONEERS.COM
TWO TIME WINNER OF BEST OF SHOW
FROM THE NATIONAL
AUCTIONEERS ASSOCIATION



WWW.AUCTIONAUCTION.COM

KIMBALL M. STERLING
AUCTION GALLERY
125 WEST MARKET STREET
JOHNSON CITY, TENNESSEE 37604
KIMBALLSTERLING@EARTHLINK.NET
423.928.1471

TERMS & CONDITIONS

1. Cash or check. A 20% buyers' premium will be added to the hammer price as part of the sale price for all bidders. Internet bidders will pay 23%. We reserved the right to hold purchases until the buyers checks clears if buyer is not known by us. Bank letter of credit is acceptable.

2. Mail or phone bids are accepted; the firm may require a deposit.

3. Kimball M. Sterling, Inc. has endeavored to catalog and describe the property correctly. All property is sold as is and neither the auction company nor the consignor will be responsible for descriptions, genuineness, provenance or condition of the property. No statement in the catalog made orally at the sale or otherwise shall be deemed to be a warranty, representation, or an assumption of liability.

4. In the event of any dispute between bidders, the auctioneer shall have total discretion to determine the successful bidder, in which his determination shall be final or to re-offer and resale the article in dispute. Title of the item or items purchased by the bidder will pass at the fall of the gavel and declaration of bidder. This is not an approval auction. All measurements are approximate.

5. Principal auctioneer: Kimball M. Sterling #2467. B. Elizabeth Sterling, auctioneer # 5757. Firm Kimball M Sterling Inc. TFL-1915

6. Bidders may bid live on the Internet by visiting <http://www.auctionauction.com>. You may also view the auction at this site and bid by phone.

7. Communications:
Telephone 423-928-1471.
Fax 423-928-2816.
Cellular 423-773-4073, 423-773-4072.
Email kimballsterling@earthlink.net

8. We do not ship protected items overseas but anything else will be shipped by the UPS Store in Johnson City. We can however hold your item till you or a friend visit's the USA and you can take your items as a personal item or we can ship to a friend in the USA.

9. Kimball M. Sterling, Inc. will not be held responsible for bids received on the day of the auction, unexecuted absentee bids, phone bidders not contacted or slow Internet bids. Although we do attempt to get all bids executed problems do occur. There will be no recourse from the bidder. We will not be responsible for items left on our location for over 30 days.

10. Sale will be conducted at 125 West Market Street, Johnson City, Tennessee. 37604. Announcements day of the sale take precedence over pre-sale advertising. Any litigation that pertains to this auction will be conducted in the county of Washington in Tennessee and is agreed upon by registering for this auction.

11. Airport is the Tri-Cities Airport, which is approximately 20 miles from the gallery. Internet catalog and live bidding available at www.auctionauction.com Best Western Hotel: 423-282-2126. A very fine hotel which offers Sterling Auction a discount rate is the Carnegie Hotel 1216 W State of Franklin Rd, (423) 979-6400.

12. Please call for condition report on sale lots or email us. We do send out multiple photos by email of any lot in the auction. By registering for this auction you accept the terms.

13. Parking service is free.



1.

2.



3.



4.



5.

1. Johnny Winter Rock/Roll Cane

20th Century-A carved ebony elephant with a pair of bone tusks, carved lizard atop with inlaid eyes, fully carved shaft and a bone ferrule. This cane can be seen on a Google search in Johnny Winter's hands in the early 1970's in many photos. O.L. 39"
\$300-\$500

2. Johnny Winter Rock/Roll Cane

20th Century-A carved and painted folk art cane which is signed "T-ACE," A nice mystical cane with staircases and cobblestones, poly-chrome paint, a high relief carving, Johnny Winter can be seen holding this cane in late 1970's photographs on the internet. O.L. 45"
\$300-\$500

3. Johnny Winter Rock/Roll Cane

Dated 2012-A custom carved cane with various skulls and stylized symbols, "JW ROCK ROLL" is carved on the sides of the handle, various wood burnings throughout including "LEGEND" and other words, stylized skull end-cap with beaded eyes and a large stopper ferrule. Truly the best custom Johnny Winter memorabilia cane in this auction. O.L. 39½"
\$500-\$1,000

4. Johnny Winter Cane

20th Century-A Carved folk art cane which appears stage right on the album cover "Raisin Cain" The photograph on the cover has been distorted some but under close examination this is the cane, nicely carved, poly-chrome paint and bright colors. O.L. 50"
\$400-\$600

5. Johnny Winter Cane

20th Century-A massive carved folk art cane made by T-ACE for Johnny Winter. This is the cane that Johnny is holding on the front of the "Raisin Cain" album, high relief carving with nice poly-chrome paint and a stopper ferrule. O.L. 46"
\$500-\$1,000

6. Johnny Winter Cane

20th Century-A natural whale's tooth with a brass collar, Lucite shaft and a metal ferrule. This cane appears stage left of the "Raisin Cain" album. H. 5" x 1 1/2" O.L. 37 1/2"
\$500-\$1,000

7. Johnny Winter Sword Cane

Ca. 1890-A carved ivory dragon with horn eyes, gold filled collar, 29" signed push and pull sword blade, malacca shaft and a metal ferrule. H. 3 1/2" x 1 1/2" O.L. 36"
\$500-\$800

8. Johnny Winter Cane

Ca. 1900-A carved stag bulldog with two collar glass eyes, white metal collar, natural vine shaft and a horn ferrule. H. 5" x 5" O.L. 37 1/2"
\$300-\$500

9. Johnny Winter Ivory Dress Cane

Ca. 1890- A high relief carved ivory handle with roses and various other flowers, silver metal collar, exotic wood shaft and a metal ferrule. H. 5" x 1 1/2" O.L. 36"
\$400-\$600

10. Johnny Winter Spider Cane

Ca. 1890-A carved ivory handle with a silver metal spider as an end-cap, ornate silver collar, exotic wood shaft and a metal ferrule. H. 4 1/2" x 1 1/4" O.L. 36"
\$500-\$800





11.

13.



11. Johnny Winter Snake Cane

Ca. 1920-A carved stage handle with a snake coiled around the handle, two colored glass eyes, signed rose gold collar, malacca shaft and a horn ferrule. H. 6" x 8 1/2" O.L. 38"

\$500-\$700

12. Johnny Winter's Shoe Cane

Ca. 1900-A carved folk art shoe with a sterling spat atop, hardwood shaft and a stopper ferrule.

H. 4" x 1 3/4" O.L. 35 1/2"

\$300-\$500



12.

13. Johnny Winter Chinese Cane

Ca. 1880-A carved bone Chinese figure, small silver metal collar, exotic wood shaft and a stopper ferrule.

H. 4" x 1 1/2" O.L. 38 1/2"

\$400-\$500



14.



14. Johnny Winter Silver Cane

Ca. 1890- A silver metal Art Nouveau handle which wraps a length of ivory, fluted silver metal collar, stepped partridge wood shaft and a stopper ferrule.

H. 4 1/2" x 1 1/2" O.L. 34 1/2"

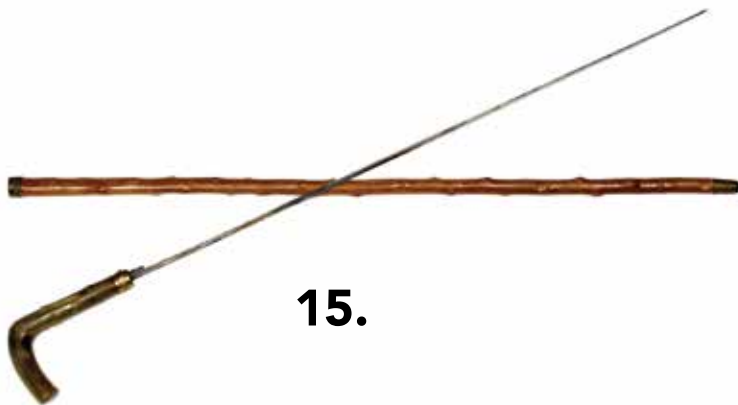
\$400-\$600

15. Johnny Winter Sword Cane

Ca. 1880-A horn handle with a gold filled ornate collar, a 26" French gilded blade which attached to a push button lock mechanism, briarwood shaft and a brass ferrule.

H. 4" x 5" O.L. 36"

\$800-\$1,200



15.

**16. Johnny Winter
Gator Cane**

Ca. 1890-A stylized carved ivory gator with two color glass natural eyes, sterling collar, partridgewood shaft and a metal ferrule.

H. 4 ¼" x 1 ½" O.L. 35"

\$500-\$700



16.

**17. Johnny Winter
Silver Folk Cane**

Ca. 1830-An unusual one piece carved burl with fine silver overlay and a 3" metal ferrule.

O.L. 36"

\$300-\$500



17.

**18. Johnny Winter
Snake Cane**

Ca. 1890-An unusual one piece country folk art cane which has a silver overlay handle with a fierce snake attached, probably American Cherry and a metal ferrule.

H. 5 ½" x 2 ½" O.L. 35"

\$400-\$600



20.

**19. Johnny Winter
Dress Cane**

Ca. 1860-A carved bovine bone handle which is attached in two pieces, malacca shaft and no ferrule.

H. 5 ½" x 2" O.L. 34"

\$300-\$500



19.

**20. Johnny Winter
Anti-Semitic Cane**

Early 20th Century-A high relief carved anti-Semitic stag handle, most of these were carved in Germany, natural vine wrapped shaft and a metal ferrule.

H. 6" x 3" O.L. 36"

\$500-\$600



18.



23.



21.

21. Johnny Winter Dress Cane

Ca. 1900-A large signed sterling handle with ornate panel work, a most unusual inlaid shaft with various types of wood and sizes of inlay, all of which is carved hexagonally and a brass ferrule. H. 2" x 2 1/2" O.L. 33"
\$300-\$500

22. Johnny Winter Tippler Stick

Ca. 1920-Tipplers Sticks were used to have that extra drink as you were traveling in a secret spot. The handle unscrews to expose a glass vial with a cork stopper, this particular vial needs another cork for the lower end, hardwood shaft and a horn ferrule. H. 1 1/4" x 1 1/2" O.L. 36"
\$200-\$300



25.

23. Johnny Winter Chinese Cane

Ca. 1890-A one piece carved folk art cane with a high relief carved man whose hair is stylized into the shape of a creature, original finish and a metal ferrule. O.L. 33"
\$300-\$500

24. Johnny Winter Barnabas Collins Cane

20th Century-A cast silver metal handle which resembles the cane used by Collins in the TV series, two color glass eyes, exotic wood shaft and a metal ferrule. H. 6" x 5" O.L. 36"
\$250-\$350



24.

25. Johnny Winter Pipe Fitter's Cane

Ca. 1930-An unusual copper and brass folk art pip fitter's cane with a copper ferrule. O.L. 38"
\$200-\$250

22.



26. Johnny Winter Ivory Cane

Ca. 1900-A large ivory cue ball cane, natural branch shaft and a 1 ½" wooden pike ferrule. D. 2 ¼" O.L. 33"
\$200-\$300

27. Johnny Winter Dress Cane

Ca. 1900-A gold filled over copper handle, ebony shaft and a metal ferrule. H. 4 ¼" x 3 ¼" O.L. 37"
\$250-\$350

28. Johnny Winter Leather Cane

Ca. 1920-A stacked leather one piece shaft with an inlaid star atop, stars are also inlaid around the handle and a brass ferrule. O.L. 34"
\$200-\$300

29. Johnny Winter Mask Cane

20th Century-A one piece crutch handle ebony cane with ten various carved bone faces attached, all of the faces are in high relief and a horn ferrule. O.L. 36"
\$250-\$350

30. Johnny Winter Snake Cane

Mid 20th Century-A carved one piece snake cane with glass beaded eyes and no ferrule. O.L. 36"
\$200-\$300



27.

26.



28.



29.



30.

34.



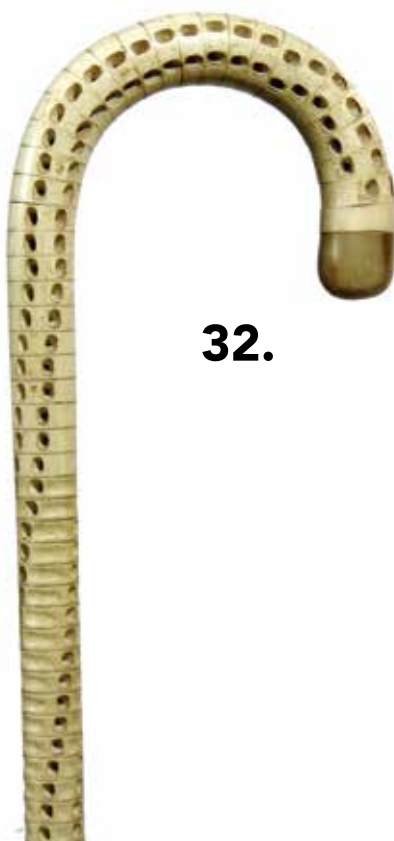
35.



33.



32.



31. Johnny Winter Mardi Gras Cane

20th Century-A Mardi Gras party cane with faceted green and amber glass beads and silver tacks, ebonized shaft and a metal ferrule. O.L. 35"
\$100-\$200

32. Johnny Winter Vertebrae Cane

Early 20th Century-A shark vertebrae cane which has many pieces which are stacked on an iron rod, horn end-cap and horn ferrule. O.L. 35"
\$250-\$350

33. Johnny Winter Horn Cane

Ca. 1940-A segmented carved black horn cane with a horn tip handle, original patina and a stopper ferrule. H. 5" x 3" O.L. 33"
\$200-\$300

34. Johnny Winter Folk Cane

Ca. 1920-A stylized horse head handle with two color eyes, a stylized longhorn cow with glass eyes, probably a Texas carved cane, natural branch shaft and no ferrule. O.L. 36 1/2"
\$150-\$300

35. Johnny Winter Deer Cane

Ca. 1940-A mounted deer foot for a handle, brass collar, thick mahogany shaft and a horn ferrule. H. 6" x 4 1/2" O.L. 37"
\$200-\$300

31.



**36. Johnny Winter
Tambourine Cane**

20th Century-A percussion system cane which is 90% covered with a tambourine, hardwood ball handle, working cymbals and a stopper ferrule. Can you imagine who this system stick has played with? O.L. 36"
\$400-\$600

**37. Johnny Winter
Natural Cane**

20th Century-This cane is made from a longhorn bull penis and these were sold in Texas and Mexico many years ago and still are today, it has a high gloss finish and a metal stopper ferrule. O.L. 34"
\$300-\$500

**38. Johnny Winter Folk
Snake Cane**

Ca. 1930-A carved smiling snake with green faceted eyes which has been paint decorated, metal collar, carved hardwood shaft with decorated snake and a metal ferrule. H. 4" x 2 1/2" O.L. 36"
\$200-\$350

**39. Johnny Winter Dress
Cane**

Ca. 1920-A Niello silver end-cap with a small gold filled spacer, malacca one piece shaft and a metal ferrule, O.L. 36"
\$200-\$300

**40. Johnny Winter
Canes**

20th Century-A pair of carved folk art canes, one with a dog and the other with a swirl snake. A.L. 36"
\$300-\$400





41.

42.

43.

45.

44.

41. Johnny Winter Folk Cane

Dated 1979-A one piece carved staff with copper nose and earrings signed "T-ACE", paint decorated throughout and a metal ferrule. O.L. 50"

\$400-\$600

42. Johnny Winter Devil Cane

20th Century-A fiercely carved devil figure with downward horns, pitchfork and flames carved on the shaft and a metal ferrule. O.L. 50"

\$400-\$600

43. Johnny Winter Indian Canes

20th Century-A pair of carved Native American canes, one with an attached feather and the other with bead work. A.L. 37"

\$300-\$500

44. Johnny Winters Canes

20th Century-Group of two defensive head knocker canes, natural wood shafts, and metal stopper ferrules, A.L. 36"

\$200-\$300

45. Johnny Winter Snake Cane

20th Century-A mounted rattlesnake cane with a large stopper ferrule. A Texas favorite. O.L. 39"

\$250-\$400

46. Johnny Winter Ebony Cane

20th Century-A carved and shell inlaid cane with a small metal ferrule, H. 2 ¾" x 5 ½" O.L. 3 ½"
\$150-\$250

46.



47. Johnny Winter Antler Canes

20th Century-A pair of antler country canes, both handmade with handmade ferrules. A.L. 36"
\$300-\$500

47.



48. Johnny Winter Group Canes

20th Century-A group of three carved and painted canes. A.L. 36"
\$200-\$300



49. Johnny Winter Snake Canes

20th Century-A group of three carved and decorated snake canes with an average length of 36"
\$250-\$350

49.

50. Johnny Winter Shillelaghs

1900-1980-A collection of four various canes from different periods in time, all have original finish with an average length of 36"
\$300-\$500

50.



48.

53.



51.



54.



52.



55.



51. Johnny Winter Vertebrae Cane

Ca. 1880-A carved walnut handle, the largest vertebrae that we have seen in our history of selling canes and a metal ferrule.

H. 4" x 2" O.L. 35 1/2"

\$250-\$350

52. Johnny Winter African Canes

20th Century-A group of three carved African canes, warriors, snakes and zebras, A.L. 36"

\$250-\$350

53. Johnny Winter Briar Crutch

Ca. 1875- An early one piece briar branch which was used as a crutch, full bark shaft and a replaced ferrule. O.L. 48"

\$100-\$200

54. Johnny Winter Collection

20th Century-A group of various folk art African and other canes, including a 50's Lucite crook handle and a boomerang.

\$250-\$400

55. Johnny Winter Wizard Staff

Contemporary-A handmade wizard staff with a 3" crystal ball, inlaid rhinestone skulls and beads throughout its full bark shaft, hanging beads and feathers and a stopper ferrule.

O.L. 5'

\$400-\$800

56. Massive Ivory Bird Cane

Ca. 1890-An expertly carved ivory bird, probably Japanese, ivory collar, fancy snakewood shaft and an ivory ferrule.
H. 2.5"x2 3/4 "x 6", O.L-36"

\$2,500-\$3,000



56.

57. Physician's Ivory Cane

Ca. 1890-A compartment cane which has four of the original vials used for medicine, the center compartment is empty but probably for a small syringe, the caduceus symbol is in a silver metal and attached to the side of the handle. Thick exotic wood shaft and a metal ferrule. H. 5 1/2" x1 1/2" , O.L. 36"

\$2,000-\$2,500



57.

58. Ivory Skull Cane

Ca. 1900-A carved ivory skull, probably English, detailed carving, large ivory collar, mahogany shaft and a black horn ferrule. H. 2 ½" x 3 ½" x 2" , O.L. 36"

\$2,000-\$3,000

59. Memento Mori Bone Cane

Ca. 1890-An unusual carving which is signed with small Asian characters, ebony shaft and a metal ferrule. H. 1 ½" x 1 ½", O.L. 36"

\$500-\$600

60. Bone Opera Telescope Cane

Dated 1878-An unusual formal example of this genre for the Victorian era, a one draw brass telescope cased in bone in working condition, ornate silver plate attachment, a full set of French hallmarks, small silver collar, strange and exotic wood shaft and a metal ferrule. H. 4" x 2", O.L. 36"

\$1,000-\$1,500



61. Tortoise Shell Opera Glasses

Ca. 1880-A pair of 3 ½" x 1 ¾" brass working opera glasses with tortoise shell overlay, swivel collar for adjusting the glasses, original brass wheel to focus, a very nice stepped tortoise shell shaft and a 2 ½" ivory ferrule. H. 4" x 2", O.L. 37"
\$2,500-\$3,500



62. Erotic Ivory Dress Cane

Ca. 1900-A carved erotic couple embracing with horn inset eyes, small ivory collar, rosewood shaft and an ivory ferrule.
H. 3 1/4"x 2", O.L. 36"
\$600-\$1,000

62.



63. Twin Ivory Horse Cane

Ca. 1880-A high relief carving of a pair of flowing mane race horses, two pair of two color glass eyes, ornate silver collar with a jockey riding a crop, hardwood shaft and a metal ferrule. H. 5 ¼"x 1 ½"
\$2,000-\$3,000



64.



64. Hippo Dragon Cane

Ca. 1890-A fierce dragon with one red eye carved on a thick hippo tooth, ornate silver metal collar, exotic wood shaft and a metal ferrule. H. 5" x 1 3/4", O.L. 35"
\$1,200-\$1,600

66.



65. Faberge Style Dress Cane

20th Century-A cased Russian ruby, diamond and enamel handle in the shape of an owl, done in the style of Faberge. The handle is marked as if it were made by the great Russian maker but it is an aftermarket work which almost meets the standards and is falsely signed by a Faberge maker, five piece segmented ivory shaft with a black horn ferrule, fitted case. Many people have these canes in their collections and think they are real and have paid five figures. They are real, you can touch them and walk with them and they are as beautiful as the original. H. 2 1/2" x 1 1/2", O.L. 36"
\$3,000-\$3,500

65.



66. Anti-Semitic Stag Cane

Early 20th-A well carved handle with great original patina, copper snake collar, large malacca shaft, and a bone ferrule. H. 5" x 3", O.L. 38"
\$500-\$700



67. Sterling Dress Cane

Ca. 1890-A nice Nouveau sterling overlay on ivory handle, gnarled wood shaft, small silver collar, and a metal ferrule. H. 3' x 1 1/2', O.L. 34"
\$300-\$500



67.

68. Klingenthal Sword Cane

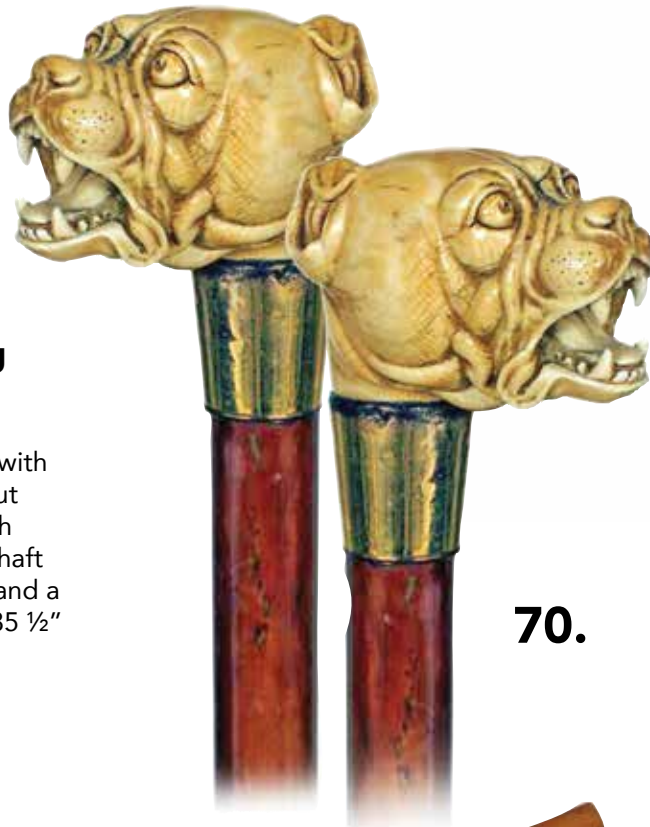
Ca. 1840-An early signed Klingenthal 12" four sided blade with various symbols, hammered copper riveted handle, push and pull mechanism, thick malacca shaft, and a matching copper ferrule. H. 1 3/4" x 2", O.L. 34"
\$500-\$800



69.

69. Stag Elephant Cane

20th Century-The carved stag elephant is very well portioned, 19th century thick malacca shaft, and an original horn ferrule. H. 3" x 5" x 1 1/2", O.L. 36"
\$500-\$700



70.

70. Ivory French Bulldog Cane

Ca. 1890-Very large ivory handle carved to depict a Bulldog head with a folded face, protruding eyes, cut ears, and a wide open mouth with amazing, strong teeth, malacca shaft with a wide and gilt metal collar and a brass ferrule. H. 2 1/2" x 3", O.L. 35 1/2"
\$1,000-\$1,500

68.



71.



72.



71. Naughty Bludgeon Cane

Ca. 1890-A very heavy silver plated handle, hardwood shaft and a metal ferrule.
H. 4 ½" x 2", O.L. 37"

\$400-\$600

72. Walrus Ivory Fist & Snake Cane

19th Century-Vertical right fist clenching a snake, ebony shaft and a stag horn ferrule. Elaborate carving. H. 4 ¼" x 1 ¾", O.L. 38"

\$700-\$900

73. Dog Countryside Cane

Ca. 1900-Well carved fruitwood dog head with long floppy ears and longer muzzle flaked by a pair of straight forward looking inset glass eyes, plain silver gilt collar with Birmingham hallmarks, golden ash branch shaft and a metal ferrule.

H. 3" x 2 ¾", O.L. 39 ½"

\$500-\$700

74. Ivory Elephant Cane

Ca. 1880-Long ivory handle carved to depict an elephant head against a tree trunk, ebony shaft and a stag horn ferrule. Rarely encountered beautiful depiction and embellished by an inset silver collar.

H. 4 ¼" x 2 ¼", O.L. 37 ¾"

\$900-\$1,200



74.



73.

75. Silver and Gold Dress Cane

Ca. 1870-Substantial silver knob delicately hand chased and engraved in high relief with a dove among rich scrolls and flowers and personalized with 18 karat yellow gold initials "AR" applied at the top. Rosewood shaft with two silver eyelets and a metal ferrule. Superb quality in also superb condition and with the bonus of an authenticating tiny French hallmarks.

H. 2 ¼" x 1 ½", O.L. 34"

\$400-\$600



75.

76. Large Ivory Rabbit Cane

London Hallmarks 1908-A wonderful example of the much admired horizontal English ivory rabbit's head with furry coat and backwards extending long ears, malacca shaft and a brass ferrule. This cane is loaded with great visual appeal.

H. 4 ¾" x 1 ¾", O.L. 37"

\$1,400-\$1,800



76.

77. Snakewood Wild Animal Cane

Ca. 1910-Large and imposing well spotted snake wood prone wild animal, possibly a lioness, twin belts sterling silver collar with Birmingham hallmarks, ebony shaft and a horn ferrule. H. 4" x 2 ¼", O.L. 36 ½"

\$600-\$800



77.

78. Anglo-Colonial Souvenir Cane

Dated January 1st, 1896-Substantial ivory handle carved on the top and in high relief "Souvenir Mayumba J.W.C.Africa January 1st, 1896" and decorated on the sides with etched leaves. Malacca shaft with a white metal collar and a metal ferrule.

H. 4 ½" x 1 ½", O.L. 35 ½"

\$600-\$900



78.

81.



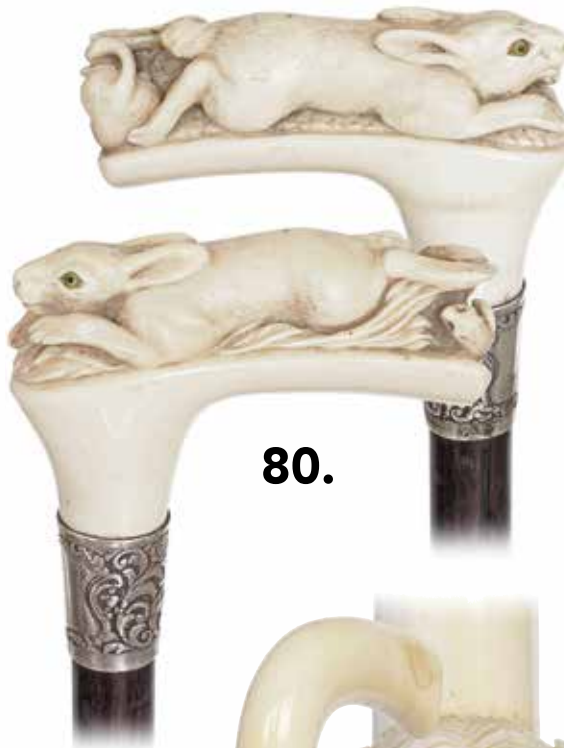
82.



79.



80.



83.



79. Horn Elephants Cane

Ca. 1900-Dark buffalo crook handle carved with two elephant heads against one another, filigree silver collar, ebony shaft and a horn ferrule. Pair of inset ivory tusks. H. 5" x 4 1/2", O.L. 35 3/4" **\$700-\$900**

80. Ivory Rabbit Cane

Ca. 1890-Large ivory handle carved to depict a sweeping rabbit with inset glass eyes and a rodent between its back paws, ebony shaft and a horn ferrule. Very decorative English cane. H. 4 1/4" x 2 1/2", O.L. 36 3/4" **\$800-\$1,000**

81. Hard Stone Dress Cane

Ca. 1920-Sizable tiger eye knob fashioned in an elongated, plain and tapering Milord shape, well figured rosewood shaft with a plain metal collar and a horn ferrule. H. 3 1/4" x 1 1/4", O.L. 38" **\$500-\$700**

82. Pheasant Countryside Cane

20th Century-Large fruitwood pheasant head handle, wild cherry branch shaft of a beautiful, natural red-brown tint with a silver collar and a metal ferrule. H. 2 3/4" x 2", O.L. 37" **\$300-\$500**

83. Art Nouveau Ivory Cane

Ca. 1890-L-shaped ivory handle with a woman's face framed by its curvaceous hair festooned with flowers, malacca shaft with a turned ivory joining collar and long ivory ferrule. Fully developed Art Nouveau cane. H. 5 1/2" x 3 1/2", O.L. 33 1/2" **\$800-\$1,200**

84. Kingfisher Cane

Ca. 1920-Large flamed wood handle carved as a kingfisher with glass eyes and an eel-like fish in its long beak, plain gilt collar, rosewood shaft and a metal ferrule. H. 4 ½" x 3 ¼", O.L. 37 ¼"
\$400-\$500

85. Figural Ivory Day Cane

Ca. 1920-Ivory handle fashioned of a single piece in a basic Opera shape on a rosewood shaft with a stag horn ferrule and silver collar with obscured London hallmarks. Superb quality and intact. H. 4 ¾" x 1 ¾", O.L. 36 ½"
\$700-\$900

86. Asian Bamboo Cane

Ca. 1880-Fashioned of a substantial and straight bamboo with a natural bulb as knob and carved in low relief with a monkey, an eagle and a flying bird above a man in traditional warfare costume. Great quality cane. H. 3" x 2" x 35 ½"
\$300-\$400

87. Ivory Day Cane

Ca. 1880-Ivory knob carved with three street musicians, malacca shaft with a plain silver collar and a stag horn ferrule. The "STERLING SILVER" hallmark on the collar hints to an American origin. H. 2" x 1 ¾", O.L. 38 ¼"
\$700-\$900

88. Figural Day Cane

Ca. 1900-Large and curving Lignum Vitae handle carved to depict a predatory bird's head with a snake in its mighty beak, well figured feather coat and inset glass eyes, rosewood shaft with a silver collar struck with Birmingham hallmarks and a metal ferrule. H. 5" x 3 ¼", O.L. 37 ¼"
\$400-\$500



85.



86.



84.



87.



88.



90.



89.



91.



92.



93.

89. Dog Head Day Cane

Ca. 1920-Hardwood dog head knob with a well figured hairy coat and inset glass eyes, rosewood shaft and a metal collar and a metal ferrule.

H. 2 1/2" x 1 3/4", O.L. 36"

\$300-\$400

90. Ivory Erotic Cane

19th Century-Ivory knob fashioned in the stylized shape suggesting the leg of a woman with bent knee, garter and stockings, malacca shaft with ivory eyelets and braided dark silk loop with tassel and an ivory ferrule. French origin.

H. 2 3/4" x 2 1/4", O.L. 37 1/2"

\$600-\$800

91. Erotic Folk Art Cane

19th Century-One piece shaved hardwood branch carved with a penis, large brass ferrule. Folk Art at its best with a minimalism that maximizes its appeal. American.

O.L. 35 1/2"

\$600-\$800

92. Anglo-Indian Ivory Cane

Ca. 1850-Substantial, phallic shaped ivory handle carved with stylized floral, malacca shaft and a stag horn ferrule. Glorious patina.

H. 5 3/4" x 1 1/4", O.L. 35 3/4"

\$500-\$700

93. English Naughty Leg Cane

Ca. 1875-Victorian silver plated bludgeon handle, naturally knob black thorn branch shaft and a metal horn ferrule. A finely chased matching garter romances the mildly-erotic overtones of the leg. Considered quite daring in its day.

H. 3 1/2" x 3", O.L. 30 1/2"

\$500-\$700

94. Erotic Folk Art Cane

Dated 1904-Fashioned of a single branch of hardwood and carved with a snake, deer, bird and dog heads. The carver took his art to a great advantage in hiding various women intimate parts in the natural shape of the branch which only appears at a close look. O.L. 34"
\$600-\$800



94.

95. Mildly Erotic Stag Horn Handle

Ca. 1890-Stag horn handle fashioned in a stylized erected male organ and carved with a bird on a twig in a large oval shield. Ebony shaft with a plain metal collar stamped "GOLDIN" and stag horn ferrule. H. 5 3/4" x 1 1/2", O.L. 38 1/2"
\$300-\$500



96.

96. Viennese Porcelain Mildly Erotic Cane

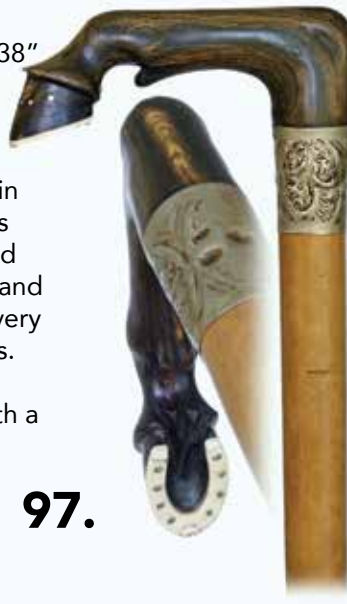
Late 19th Century-The famous mildly erotic motif of Leda & Swan in white porcelain with blue and red highlighted eyes and lips and 824 embossed manufacturing serial number on a stepped malacca shaft with a silver wrap collar and a metal ferrule. H. 4 1/4" x 2 3/4", O.L. 35 1/2"
\$500-\$800



95.

97. Turf Day Cane

Ca. 1870-Siam horn handle carved as a horse leg with ivory hoof and gilt nails, chased white metal collar, malacca shaft and a stag horn ferrule. Excessively decorative cane. H. 4 1/2" x 1 1/2", O.L. 38"
\$400-\$600



97.

98. Ivory Revival Cane

Ca. 1890-Straight ivory handle carved in the Middle Age style with two portraits against one another. The young girl and young man are rendered in high relief and painstaking fine detail and framed by very rich and elaborate decorative elements. The handle, possibly symbolizing marriage, comes on an ebony shaft with a stag horn ferrule. H. 3 1/4" x 1 1/4", O.L. 38 1/4"
\$600-\$800



98.

99.



100.



**99. Viennese Porcelain
Mildly Erotic Cane**

Late 19th Century-The famous mildly erotic Harem motif of the reclining nude and Blackamoor boy in white with colored highlighted eyes and lips and 825 embossed manufacturing serial number on a fruitwood shaft with a brass ferrule. H. 4" x 2 3/4", O.L. 35"
\$500-\$800

100. Silver Dog Head Cane

Ca. 1920-Nationalistically modeled and deeply chased silver dog head with long hair, ebony shaft and a brass ferrule. Handy shape and with a well-used surface. H. 3" x 2 1/2", O.L. 36"
\$500-\$700

103.



102.



**101. Japanese Export
Walrus Ivory Cane**

Meiji Ca. 1880-A large walrus ivory handle with birds and rats among flowering branches, malacca shaft and a bone ferrule. H. 8 1/2" x 3/4", O.L. 39"
\$400-\$500

**102. Ivory Bedouin Head
Cane**

Ca. 1880-The ivory knob is carved to represent the head of a Bedouin with a bearded face and traditional head gear which consists of the kaffiyeh-cloth and agal-rope that constitute his proper attire and lends him the unmistakable identity of an Arab nomad from the Middle East. This rarely encountered iconic portrait cane has a pepper bamboo shaft and a metal ferrule. H. 2 3/4" x 2", O.L. 34"
\$500-\$700

101.



103. Hard Stone Ball knob

20th Century-Rarely encountered Pierta Paesina ball knob with a "A La Reine" or "Queen Crown" white metal collar, well figured rosewood shaft and a matching horn ferrule.. The stone was often displayed as natural objects of contemplation in European Renaissance "Wunderkammers". H. 2 1/4" x 1 3/4", O.L. 37 3/4"
\$300-\$400

**104. American Wild
West Cane**

19th Century-Ebony and ivory handle inspired by a revolver grip, hardwood shaft with a metal collar and missing ferrule.
H. 5 1/4" x 3 3/4", O.L. 37 3/4"
\$300-\$500



104.

105. Dog Day Cane

Ca. 1900-Well carved oak dog head with folded ears and shorter muzzle flanked by a pair of straight forward looking inset glass eyes, beautiful silver collar in the shape of a belt with buckle struck with Birmingham hallmarks, varnished hardwood shaft and a metal ferrule.
H. 2 1/2" x 2 1/4", O.L. 36 1/4"
\$600-\$800



105.

**106. Ebony and Ivory
Art Deco Dress Cane**

Ca. 1895-Ebony and ivory handle carved with two nudes on a longer, plinth collar, ebony shaft and a 2 1/4" ivory ferrule. Directly linked to the rich and distinctive heritage of the Wiener Werkstätte, this cane is a singular and precious object that happily reminds us what Viennese Art Deco was capable of producing.
H. 3 1/2" x 1 1/2", O.L. 38 1/4"
\$300-\$400



106.

**107. Boxwood Whippet
Cane**

Ca. 1920-Stylized carved boxwood whippet head handle with floppy ears and inset large and dark glass eyes, metal ring collar, makassar ebony shaft and a brass ferrule. Great whimsical flair and monogrammed "MW" by the creating artist.
H. 3 1/4" x 1 3/4", O.L. 36 1/2"
\$300-\$400



107.

109.



110.



108.



108. Hide Badine

Ca. 1900-L-shaped silver handle with knobby shoulder and obscured hallmarks, shorter shaft made of a single piece of dried and plain turned possibly rhinoceros hide. Intact and with a beautiful, bright and waxy surface to the shaft. Possibly English.

H. 3" x 2", O.L. 29 3/4"

\$400-\$600

109. Dieppe Ivory Day Cane

Ca. 1880-Long ivory handle delicately carved in high relief with, what seems to be, an allegory of the summer. One can see wheat spikes, flying birds and flower garlands among other decorative elements on its longer vertical stem and a bunch of wheat spikes on the square-octagonal top. This French handle survived practically intact and comes on a rosewood shaft with an ivory ferrule.

H. 5 3/4" x 1 1/2", O.L. 36 1/2"

\$400-\$500

110. Ball and Claw Cane

Ca. 1910-Massive hardwood ball and claw knob, rosewood shaft with a silver gilt collar and a horn ferrule. This cane promotes a powerful character and is possibly American.

H. 3 1/4" x 2", O.L. 37 1/2"

\$300-\$400

111. Revival Ivory Cane

Ca. 1910-Ivory Pharaoh Bust handle on a longer knobbed stem with ebony dot inlay on an ebony shaft with a horn ferrule. Anglo-Egyptian cane from the Revival period and contemporary to the great excavations discoveries of early 1900s. H. 6 3/4" x 1 1/4", O.L. 37 1/4"

\$300-\$400

112. Figural Silver Cane

Ca. 1900-Modified Opera shaped silver handle with a longer cylindrical stem hand chased and engraved with, what seems to be, ethnic and traditional Babylonian scenes. Ebony shaft and a matching, 2 1/2" long silver ferrule. Typical Anglo-Persian quality cane and in mint condition.

H. 3 3/4" x 4 1/2", O.L. 37"

\$300-\$400

111.



112.



113. Anglo-Colonial Cane

Ca. 1880-Huge hardwood knob carved to depict the head of a wise man with laughing face, well knobbed kongo wood shaft with a metal collar and ferrule. A combination of size, quirky motif and untouched dark, age grown patina lend this cane a certain individuality of spirit.

H. 5 1/2" x 3 1/2", O.L. 37 3/4"

\$500-\$700

114. Swan Day Cane

Ca. 1920-A well carved and nationalistically colored hardwood swan head with inset glass eyes, ebonized shaft with a metal ferrule and a silver collar with Birmingham hallmarks. Decorative and quality cane.

H. 4" x 2 1/4", O.L. 36 3/4"

\$200-\$300

115. Rajasthan Dagger Cane

20th Century-All steel silver damascene cane with a substantially modified Derby shaped handle ending with a tiger head which unscrews to reveal a 5 1/2" long blade. The shaft breaks down into two parts for better storage and is fitted with an integral 3 1/2" inch long and pointed ferrule. A decorative parade cane with extensive silver inlay and it is intact.

H. 6" x 4", O.L. 37"

\$700-\$800

116. Monkey Day Cane

20th Century-Hard wood knob carved a monkey head, plain silver collar with Birmingham hallmarks, rosewood shaft and a horn ferrule. Very decorative and stylized carved with the cane wearer's comfort in mind.

H. 2 1/2" x 2 1/2", O.L. 36 1/4"

\$300-\$400

113.



115.



114.



116.

119.



117.



117. Parrot Head Dress

Cane

19th Century-Well carved hardwood parrot head with glass eyes and remaining color highlight, grooved silver collar, dark rosewood shaft and a horn ferrule. H. 4" x 2 1/4", O.L. 36 1/2"
\$300-\$400

118. Jasper Dress Cane

Ca. 1920-The substantial jasper ball handle of a mottled red-brown color, wide and well chased silver collar, dark rosewood shaft and a metal ferrule. H. 2" x 2", O.L. 35 1/2"
\$300-\$400

119. Rajasthan Dagger Cane

20th Century-All steel silver damascene cane with a substantially modified Derby shaped handle which unscrews to reveal a 5 1/2" long blade. The shaft breaks down into two parts for better storage and is fitted with an integral 3 1/2" long and pointed redoubtable ferrule. A decorative parade cane with extensive silver inlay and it is intact. H. 6" x 4", O.L. 37"
\$500-\$700

118.



120.



120. Dog Head Day Cane

Ca. 1920-Hardwood dog head knob with a well figured hairy coat and inset glass eyes, wild cherry branch with a horn ferrule and a plain silver collar with Birmingham hallmarks. H. 2 1/2" x 2 1/4", O.L. 38 1/4"
\$200-\$300

121. Dog Head Day Cane

Ca. 1920-Fruitwood dog head knob with a pointed snout, upright ears, a well figured hairy coat and inset glass eyes, rosewood shaft and a metal ferrule. Fine and unused Viennese cane. H. 3 1/4" x 2 1/2", O.L. 36 3/4"
\$200-\$300

121.

122. Sandal Wood Cane

20th Century-All sandal wood cane with an angular elephant head handle and a segmented shaft intricate carved with various animals. Burmese light weighted and very decorative traditional cane and with a rubber ferrule.

H. 5 1/2" x 1 1/2", O.L. 36 3/4"

\$200-\$300



122.

123. Figural Day Cane

Ca. 1880-Gilt metal knob well-modeled cast and chased to depict the head of a crying child with heavy tear drops in the eyes. The integral, angular and tapering plinth of the knob has a German engraving "Mein liebes Herzblatt" which translates "My darling sweetheart". Rosewood shaft and a horn ferrule.

H. 4" x 2", O.L. 36 1/2"

\$300-\$400

124. Stanhope Cane

Ca. 1900-Braided leather Turk's knot knob on a straight rosewood stem fitted with a Stanhope picture of the "Main Falls", ebony shaft and an ivory ferrule. Classic vacation resort souvenir cane with a perfectly conserved and clear stanhope.

H. 3 1/4" x 1", O.L. 34"

\$200-\$300



124.

123.

125. Three Enamel Canes

20th Century-A panda and a heron head in a warm toned amber colored cold enamel respectively on a fruitwood shaft with a metal ferrule and an ebonized shaft with a horn ferrule and what seems to be an erotic motif with hearts in green and red enamel on a rosewood shaft with a horn ferrule. The three metal handles are modeled with rounded edges with the comfort of the wearer in mind and show some harms to the enamel. H. 2 3/4" x 2", O.L. 37 1/4", 3 1/2" x 2", O.L. 37 3/4", 3 3/3" x 2 1/4", O.L. 35 1/2"

\$300-\$400



125.



126.



126. Folk Art Cane

Ca. 1900-Fashioned of one sturdy olive tree branch with an integral L-shaped handle carved on one side with a stylized dog head and on the other with the face of a bearded shepherd. This remarkable cane is a superb product of a long and distinguished ancient Corfu cane making tradition introduced by the English protectorate to the Ionian island. It is signed "KERKYRA" which translates "Corfu", still retains its original metal ferrule and aged well with a glazed and dark surface.-H. 5" x 3", O.L. 35 3/4"

\$200-\$300

127.



128.



127. Makhilla Cane

French, Basque Region-Woven leather handle with horn knob and brass collar, swiveling hanger and braided loop, scarred branch shaft with long brass ferrule and cross shaped steel tip. The handle unscrews to reveal a redoubtable steel spike. Various Basque inscriptions to the handle. H. 8 1/4" x 2", O.L. 34 1/4"

\$300-\$400

128. Boxwood Whippet Cane

Ca. 1920-Stylized carved boxwood whippet head handle with long floppy ears and inset glass eyes, silver triple ring collar, ebony shaft and a metal ferrule. Great whimsical flair and monogrammed "MS" by the creating artist. H. 3 3/4" x 2 1/4", O.L. 36 1/2"

\$200-\$300

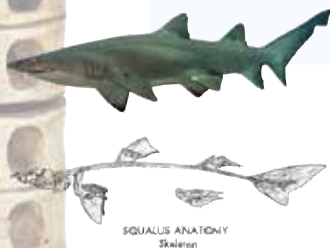
129. Norwegian Shark Spine Cane

Ca. 1890-Stag horn handle carved with a hunting dog on a shaft made of shark vertebrae washers piled on a steel core with a wide silver collar engraved "Anton Johansen /Lynstad" and a brass ferrule. Most unusual and attractive combination, in a superb condition. H. 4 1/2" x 1 1/2", O.L. 32 3/4"

\$500-\$600



129.



130. Bronze Soldier Cane

Ca. 1900-A cast bronze French Napoleonic soldier head with fine detail and rich patina, plain silver plated collar, ebony shaft and a horn ferrule.

H. 3 ¼" x 1 ½". O.L. 39 ½"

\$300-\$400

130.

131. Dog Head Cane

Ca. 1900-Very large fruit wood handle carved as a French Bulldog head with upright ears, flat muzzle and inset glass eyes, malacca shaft with a bound leather collar-loop and tassel and a stag horn ferrule. Viennese day cane and in superb condition. H. 4 ¼" x 2 ½", O.L. 35 ½"

\$300-\$400

131.

132. Paper Washer Cane

Ca. 1890-Entirely made of paper washers tightly stacked on a steel core with an integral knob and brass ferrule. Very fine example of its kind and in great and original condition. Due to delivery shortage of exotic woods, canes made of paper appeared for a brief period in Germany and their manufacturing processes were granted several patents. H. 2 ½" x 2", O.L. 36 ½"

\$200-\$300

132.

133. Folk Art Hardwood Handle

Ca. 1880-A long and dark hardwood handle with silver eyelets carved with the head of a man wearing a bonnet, ebony shaft with a plain silver collar and a metal ferrule. It is characterized by the funny expression of good folk art and is possibly American.

H. 5 ¾" x 1 ¾", O.L. 36"

\$200-\$300

134.

134. Horn Dress Cane

Ca. 1920-Two colored horn knob plain turned in an elegant shape, enamel collar and a pepperwood shaft with a horn ferrule. The structure and the color hues suggest possible rhino horn. Springily used and in mint condition.

H. 1 ½" x 1 ¼", O.L. 35 ¾"

\$200-\$300

133.

135.



135. Duck Day Cane

Ca. 1920-Flamed lemonwood duck head with a broad beak and inset glass eyes, dark rosewood shaft with a metal collar and a metal ferrule. Decorative and quality cane. H. 4 1/4" x 2 1/4", O.L. 37 1/4"
\$300-\$400

136.



136. Mascot Day Cane

Ca. 1900-Boxwood knob carved with two chubby Wise Men faces against one another, fine grained lemonwood shaft with a horn ferrule and gilt metal collar. Japanese export, Meiji period. H. 1 1/4" x 1 1/4", O.L. 36 1/4"
\$100-\$200

137.



137. Dual Purpose Leather Washer Cane

19th Century-Flat pistol shaped horn handle with a notch on a stacked leather washer shaft with a steel ferrule. The notch probably accommodated at a certain time a steel blade and made of the cane a redoubtable hatchet. Well aged, dark surface. H. 3 1/2" x 2 3/4", O.L. 37"
\$100-\$200

138.



138. Lizard Day Cane

Ca. 1900-Hardwood lizard handle and its plain silver collar, naturally bizarre grown wild vine shaft and a brass ferrule. Rarely encountered in the widespread cane repertoire and praised by a dark, age grown patina. H. 4 3/4" x 3 1/2", O.L. 36 1/2"
\$200-\$300

139.



139. Folk Art Duck Cane

Ca. 1900-Carved fruitwood handle, glass eyes, malacca shaft, leather collar and a metal ferrule. The charm of this cane is based on its individuality of spirit and enjoys the merits of a well-used patina. Like good Folk Art it makes you smile. H. 6" x 2", O.L. 36"
\$100-\$200

140. Tiffany Silver Dress Cane

Ca. 1920-A signed Tiffany & Co. dress cane with three silver bands, flat triangular crutch handle, a Wycoff style cane, American walnut and no ferrule.

\$500-\$700



141.



140.

141. Horn Dress Cane

A Wycoff style cane with a blonde horn handle, silver overlay enamel collar, substantial malacca shaft and a horn ferrule. H. 4 1/2" x 4" O.L. 35"

\$500-\$700



142. Malacca Dress Cane

Ca. 1920-A nice crutch done in the Wycoff style, bone collar with a gold ring overlay, malacca shaft and a bone ferrule. H. 4 1/2" x 6" O.L. 36"

\$300-\$400



142.

143. A Horn Sword Cane

Ca. 1870- An unusual horn handle which is possibly rhino, push and lock mechanism with a 16" worked and serrated 4 sided blade, ornate brass collar, real bamboo shaft and a brass ferrule. H. 3 1/4" x 4" O.L. 38"

\$700-\$1,000



144.

144. Agate Dress Cane

Ca. 1880-An elegant agate handle with an ornate gold filled end cap and upper collar, matching ornate gold filled lower collar, cherry shaft and a metal ferrule.

H. 2 1/2" x 3" O.L. 36"

\$350-\$450



143.

147.



145.



146.



149.



148.



145. Flashlight System Cane

Ca. 1920- A nice example of the Bakelite flashlight cane with Bakelite endcap which lights up at the twist of the Bakelite collar, nice maple handle and shaft and a horn ferrule. O.L. 35"

\$450-\$550

146. Flashlight System Cane

Ca. 1930- This example comes to us from a collection in Ukraine, mechanism seems to be working but batteries will be needed, some small amount of pitting to the battery case but otherwise fine, natural branch shaft a pipe ferrule. H. 4 1/2" x 1 1/2" O.L. 35"

\$350-\$450

147. Snowy Porcelain Dress Cane

Ca. 1890-A hand painted porcelain handle with a snowy farm scene with a fence and a few houses, Moriage gold decoration, ornate gold collar, Mahogany shaft and a bone ferrule.

148. Victorian Dress Cane

Ca. 1875-An ornate handle with a gold filled endcap with shamrocks cast in high relief, matching high relief shamrock collar, ebony shaft and a metal ferrule. H. 5" x 2" O.L. 35 1/2"

\$400-\$700

149. Toledo Dress Cane

Ca. 1890- A nice example of this Spanish work in fine condition with very minimal wear, exotic wood shaft and a metal ferrule. H. 4" x 2" O.L. 36"

\$600-\$900

150. Porcelain Dress Cane

Ca. 1890-A royal cobalt blue handle with heavy Moriage work, a panel of red and white flowers which have been hand painted, ornate metal collar, ebony shaft and a metal ferrule. H. 6" x 1" O.L. 35 1/2"

\$500-\$600

151. Tippler's Stick

Ca. 1920- An Austrian tippler's stick with a faux tortoise shell disk atop, container has its original cork but there is a small break on the top of the 20" vile, maple shaft and a metal ferrule. H. 1" x 1 1/2" O.L. 36"

\$150-\$250

152. Inuit Walrus Flashlight Cane

Ca. 1910- An unusual system cane of a walrus which when it is turned the entire handle carved of walrus illuminates, working condition, large brass collar, thick hardwood shaft and a brass ferrule. H. 4" x 1 1/4" O.L. 37 1/2"

\$800-\$1,200

153. Agate Dress Cane

Ca. 1920-A beautiful four color handle with nice crystallization, ornate silver metal collar, mahogany shaft and a horn ferrule. H. 1 1/2 x 1 1/2" O.L. 37"

\$300-\$500

154. Buffalo Horn Horse Cane

Ca. 1890- A high relief carved buffalo horn horse with two color glass eyes, very ornate high relief gold filled collar, ebony shaft and a stag horn ferrule.

H. 4 1/2" x 2" O.L. 36"

\$600-\$900



152.



150.



154.



153.

151.





155.



156.

155. Lizard Bird Cane

Ca. 1930-An interesting looking bird which is covered with snakeskin and monitor lizard, green and black glass eyes, probably a carved horn beak but maybe a synthetic, ornate silver collar, thick malacca shaft and a bone ferrule.

H. 2 ½ x 2" O.L. 35 ½"

\$400-\$600

156. Paperweight Dress Cane

Ca. 1925-An amazing piece of glass done with three colors of controlled swirls, formal gold filled collar, ebony shaft and never had a ferrule.

D. 1 ½ x 1 ½" O.L. 35"

\$300-\$500



157.

157. Silver Eagle Dress Cane

Ca. 1890-A stylized signed .800 silver high relief eagle with two interesting two color glass eyes, cherry wood shaft and a metal ferrule.

H. 3" x 2 ¼" O.L. 36"

\$500-\$600



159.



158.

158. Tennessee Mussel Shell Dress Cane

Ca. 1900-A rare specimen of a Tennessee River mussel shell which has been carved in an abstract form, an ornate signed silver collar, an American oak shaft and a matching ornate silver ferrule.

H. 2" x 2 ½" O.L. 35 ½"

\$400-\$600

159. Faceted Agate Dress Cane

Ca. 1930-A fully faceted agate, silver crown collar, ornate inlayed hardwood exotic shaft, a brass ferrule.

D. 1 ½" O.L. 35"

\$300-\$400

160. Buggy Whip Cane

Late 19th Century-"The patent cane whip, Springfield, Ohio" a nice example of this sought after system cane in working condition and extends to 70" to make the working whip.

H. 7/8" x 2" O.L. 36"

\$600-\$900

161. Tortoise and Agate Dress Cane

Dated 1896-A perfect agate handle, hallmarked gold fluted collar, tortoise shell upper-shaft with a center collar dated February 1896, original rope tassels, rich snakewood shaft and a clear horn ferrule. This cane falls into the league of Objects of Virtue. D. 1 1/4" O.L. 36"

\$1,500-\$2,500

162. Captains Telescope Cane

Ca. 1860-A working example of a two draw scope, probably British and Sheffield, mechanism folds completely into the handle with a screw off endcap atop, half bark malacca shaft and a metal ferrule.

H. 6" x 1 1/4" O.L. 34"

\$1,500-\$2,000

163. Bone Gambler's Cane

Ca. 1880-A compartment cane which houses 19 dice in various colors which are probably post date of the handle, large carved bone collar, zebra wood shaft and a 2 1/2" metal ferrule. H. 2 3/4" x 1 1/4" O.L. 35"

\$500-\$600

160.

161.

163.



164.

164. Ivory Horse Cane

Ca. 1880-A carved ivory horse with some staining, two color glass eyes, large silver metal collar, hexagonal snakewood shaft and a horn ferrule. H. 4" x 1 1/4" O.L. 36"
\$1,200-\$1,600



166.

165. Silver and Stag Sword Cane

Ca. 1870-An early four sided 20" blade in a push and pull mechanism, overlaid red deer antler with silver, silver collar, bamboo shaft, and a metal ferrule. H. 5" x 1 3/4", O.L. 35"
\$500-\$700



166. French Nude Stanhope Cane

Ca. 1900-A full frontal nude as they appeared at this time in history. The Stanhope is clear and easy to admire (a few small bubbles on the left side), just hold it up to light and put your eye against the small glass, silver metal collar, nice exotic wood shaft and a metal ferrule. H. 3 1/4" x 1 3/4", O. L. 35"
\$700-\$1,000



167.

167. Dress Cane

Ca. 1880-A four segment ivory dress cane with a metal ferrule. H. 1"x 2", O.L. 33"
\$300-\$450



168.

168. Three Antique Canes

Ca. 1880-Nice condition
\$200-\$400

165.

169. Twenty-One Carnival Canes

\$200-\$400



169.



170. Samurai Sword Cane

Ca. 1850-An unusual sword cane, the likes we have never seen before, the handle is a tree bark handle that is wrapped partially in some type of painting, a 20" blade with a bloodline, copper sword mount, natural branch shaft and a very early iron ferrule. H. 7" x 1 1/4" O.L. 34 1/2"

\$500-\$1,000

170.



171. Pair of Sword Canes

\$300-\$500

172. Pair of Sword Canes

\$300-\$500

173. Three Sword Canes

\$300-\$500

174. Three Sword Canes

\$300-\$500

171.



172.



174.



173.





WWW.AUCTIONAUCTION.COM

KIMBALL M. STERLING, INC. (TFL-1915)
125 WEST MARKET STREET
JOHNSON CITY, TENNESSEE 37604
KIMBALLSTERLING@EARTHLINK.NET
423.928.1471

PHOTOGRAPHY BY JAMES PRICE

CATALOG DESIGN BY KT DESIGN, LLC
WWW.KTDESIGNLLC.COM

© COPYRIGHT 2016 KIMBALL M. STERLING, INC.