

UNDER THE IMMEDIATE PATRONAGE OF THEIR LATE MAJESTIES KING EDWARD VII & KING GEORGE V



Kimball and Victoria Sterling present

Important Canes from the

Ann and Pat ARTHUR Collection

Saturday, June 18th





Kimball and Victoria Sterling present
Important Canes from the

Ann and Pat ARTHUR Collection

Saturday, June 18th



Live on the internet at
LIVEAUCTIONEERS.COM
Two Time Winner of Best of Show
from the National
Auctioneers Association

Kimball M. Sterling
Auction Gallery
125 West Market Street
Johnson City, Tennessee 37604
kimballsterling @ earthlink.net
423.928.1471

www.AuctionAuction.com

TERMS & CONDITIONS

1. Cash or check. A 20% buyers' premium will be added to the hammer price as part of the sale price for all bidders. Internet bidders will pay 23%. We reserved the right to hold purchases until the buyers checks clears if buyer is not known by us. Bank letter of credit is acceptable.

2. Mail or phone bids are accepted; the firm may require a deposit.

3. Kimball M. Sterling, Inc. has endeavored to catalog and describe the property correctly. All property is sold as is and neither the auction company nor the consignor will be responsible for descriptions, genuineness, provenance or condition of the property. No statement in the catalog made orally at the sale or otherwise shall be deemed to be a warranty, representation, or an assumption of liability.

4. In the event of any dispute between bidders, the auctioneer shall have total discretion to determine the successful bidder, in which his determination shall be final or to re-offer and resale the article in dispute. Title of the item or items purchased by the bidder will pass at the fall of the gavel and declaration of bidder. This is not an approval auction. All measurements are approximate.

5. Principal auctioneer: Kimball M. Sterling #2467. B. Elizabeth Sterling, auctioneer # 5757. Firm Kimball M Sterling Inc. TFL-1915

6. Bidders may bid live on the Internet by visiting <http://www.auctionauction.com>. You may also view the auction at this site and bid by phone.

7. Communications:
Telephone 423-928-1471.
Fax 423-928-2816.
Cellular 423-773-4073, 423-773-4072.
Email kimballsterling@earthlink.net

8. We do not ship protected items overseas but anything else will be shipped by the UPS Store in Johnson City. We can however hold your item till you or a friend visit's the USA and you can take your items as a personal item or we can ship to a friend in the USA.

9. Kimball M. Sterling, Inc. will not be held responsible for bids received on the day of the auction, unexecuted absentee bids, phone bidders not contacted or slow Internet bids. Although we do attempt to get all bids executed problems do occur. There will be no recourse from the bidder. We will not be responsible for items left on our location for over 30 days.

10. Sale will be conducted at 125 West Market Street, Johnson City, Tennessee. 37604. Announcements day of the sale take precedence over pre-sale advertising. Any litigation that pertains to this auction will be conducted in the county of Washington in Tennessee and is agreed upon by registering for this auction.

11. Airport is the Tri-Cities Airport, which is approximately 20 miles from the gallery. Internet catalog and live bidding available at www.auctionauction.com Best Western Hotel: 423-282-2126. A very fine hotel which offers Sterling Auction a discount rate is the Carnegie Hotel 1216 W State of Franklin Rd, (423) 979-6400.

12. Please call for condition report on sale lots or email us. We do send out multiple photos by email of any lot in the auction. By registering for this auction you accept the terms.

13. Parking service is free.

1. Cigar/Cheroot Holder Folk-Art Cane

Ca. 1880-A one piece carved hardwood folk cane of a gentlemen with a large mustache and an expertly carved cheroot holder, the carved fez has an opening atop for the drawing of the smoke, original patina and a metal ferrule. H. 5 ¼" x 2 ¾" O.L. 36 ½"

\$700-\$900



1.

2. John Muir Historic Cane

Late 19th Century-An ornate silver engraved handle with the name "John Muir" atop, Muir was the most famous influential naturalist in the United States and founder of the Sierra Club, engraved belt buckle collar, twisted hardwood shaft with a horn ferrule. The handle has a small split but not annoying on its side. H. 3 ¼" x 1 ½" O.L. 34"

\$900-\$1,100



2.



3. Silver Mermaid Cane

Ca. 1980-An Art Nouveau casting, probably French, of a reclining nude mermaid, a high relief casting done in great detail, a hardwood carved ebonized shaft which is done in the shape of blackthorn and a metal ferrule. H. 4 ¾" x 3" O.L. 33"

\$2,500-\$3,000



3.

4. Art Deco Articulated Dog Cane

Ca. 1920-vA horn handle dog with a push button mechanism which lowers the jaw which has a red tongue and four sharp teeth, a pair of bone and horn inset eyes, small bone collar, exotic wood shaft and a bone ferrule.

H. 2" x 3 1/2" O.L. 36"

5. Tobacco Pipe Folk Cane

Ca. 1890- A briar pipe carved in the shape of what appears to be a medieval style person, the bowl is in the back of the head of the 8" pipe, horn pipe stem and collar, nice bamboo shaft and horn ferrule. H. 4 1/2" x 2 1/2" O.L. 36"

\$600-\$800

6. Erotic Nude Snuff Cane

Ca. 1880-An unusual silver and rose gold container cane with a porcelain nude on the underside of the silver top handle, a letter "D" appears on the handle, a unique rose gold checkered collar, a full bark malacca shaft and a horn ferrule. H. 1" x 2" O.L. 38"

\$3,000-\$4,000



4.



6.



5.





7. Opium Pipe Cane

Ca. 1880-A silver topped system cane which holds a 7" brass and wood opium pipe, the handle is ornately cast throughout with various flowers and leaves, thick malacca shaft and a metal ferrule. H. 2 1/4" x 1 1/2" O.L. 37 1/2"

\$600-\$900



8. Silver/Snakewood Dress Cane

Ca. 1900-A simple British hallmarked silver handle, more important is the best figured snakewood shaft that we have seen and a brass ferrule.

H. 1 1/4" x 1 1/4" O.L. 36"

\$300-\$400



9. Native American Beaded Cane

Ca. 1920-A full beaded storm pattern cane in fine condition with little or no loss of any bead work. O.L. 36"

\$350-\$450



10. Natural Folk-art Cane

Ca. 1880-A one piece root style cane with original patina and a metal ferrule. O.L. 36"

\$200-\$300



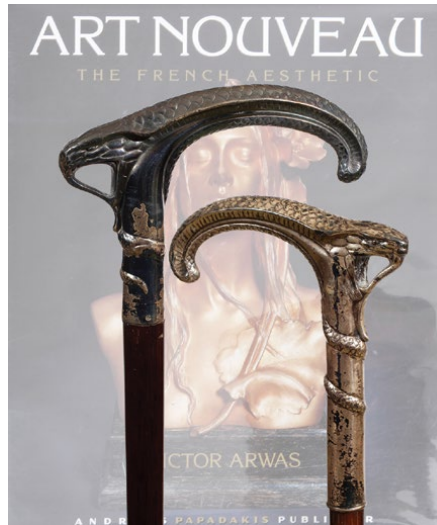
10.



11. Museum Quality Art Nouveau Dress Canes

Ca. 1890-The finest pair known to exist of matching Art Nouveau sterling canes, a his and hers pair that exude the opulence of the Art Nouveau period. The pair are featured on page 428 of the bible of the French Nouveau period "Art Nouveau, the French Aesthetic" by Victor Awaras. The modified opera handles are the shape of a vicious open mouth viper, both have exotic wood hardwood shafts and metal ferrules. Awaras's book in mint condition accompanies this lot. H. 3 1/2" x 4 3/4", 2 3/4" x 3 1/2" O.L. 35" and 34 1/2"

\$12,000-15,000



11.



12.

12. Rare Gun Cane

Ca. 1870-A most unusual L.A.M.Benes patent gun cane which is signed on the breech, ivory handle, mechanism is working and it operates by pulling the ivory handle vertical to the shaft and by lowering the ivory handle into a pistol grip shape, the gun cocks and fires, percussion mechanism, cherry wood shaft and a 3" brass ferrule. H. 1 ½ x 4" O.L. 35"

\$5,000-\$6,000

13. Silver Bird Pill Box Cane

Ca. 1885-A most unusual pill box cane with a hinged silver bird head which when flipped atop has a compartment for the private keeping of objects, the bird appears to be a small chickadee with very definite feathering throughout the head, the wings on the horn body are carved in high relief from one piece of horn, silver fluted collar with detailed feathering, exotic hardwood shaft and metal ferrule H. 3 ½" x 1" O.L. 33"

\$1,200-\$1,500



13.

14. Physician's "Doctor's Bag" Cane

Ca. Late 19th Century-A museum quality physicians cane which was engraved on top and probably custom built for "E.L. Gimore, M.D., 700 Leland Ave., Chicago." The ornate Simmons gold handle is marked with the number "2" which many cane enthusiasts feel is solid 14 kt gold. The handle unscrews and has a pull out tube which consists of a wooden spool of suture thread, a hypodermic needle, 18 glass vials with original tops with various medications along with a glass tube which once contained morphine sulphate, a custom built bell bronze shaft and an incorporated bronze ferrule. H. 3 1/2" x 1 1/2" O.L. 34"

\$5,000-\$7,000

15. Baroque Pearl and Diamond Container Cane

Ca. 1880-An Object of Virtue pearl (the size of a dime) hinged container cane with approximately 40 rose cut diamonds on the lower side of the top, spring loaded lock mechanism, small unreadable hallmark on lower section, handle appears to be karat gold, honey malacca shaft and a horn, gold and metal ferrule. H. 3/4" x 3/4" O.L. 33"

\$2,500-\$3,000



15.



14.



17.



18.



16.



16. Silver Coral Dress Cane

Ca. 1880-A unique cast signed sterling nautical motif handle with a large sterling coral branch and about a dozen starfish in high relief, natural twigspur shaft and a metal ferrule. H. 5" x 2 1/4" O.L. 35"

\$800-\$1,000

17. Officer's Campaign/Picnic Cane

Ca. 1890-An ornate silver handle with a high relief crest of a soldier seated on a horse with the banner flag "Quo-Para-Vogani," handle unscrews to expose an 8" rosewood and pewter interlocking knife and fork set, thick malacca shaft and a 3" horn ferrule. H. 1 3/4" x 1 3/4" O.L. 33 1/2"

\$700-\$900

18. Art Deco Bat Cane

Ca. 1920-An unusual .800 silver handle with an unreadable hallmark with a high relief bat atop, bat canes are very rare in our field of collecting, original partridge wood shaft and a metal ferrule. H. 1" x 2" O.L. 34 1/2"

\$1,200-\$1,400

19. Gamblers Dice Game Cane

Ca. 1900-A nice example of a silver and glass dice cage with 3 bone dice and a green felt bottom, hand checkering throughout the British hallmarked dice cage, ivory spacer, fluted silver collar, rosewood shaft and a horn ferrule. H. 3 1/4" x 2 1/2" O.L. 35 1/2"

\$700-\$900



19.

20. Gun Cane

Ca. 1890-A Belgium cartridge 12mm gun cane marked with the royal crown containing E Over LG, nice horn crook handle and a brass collar which when turned reveals the trigger, fine working condition with original metal shaft and removable ferrule, H. 4" x 4" O.L. 35"

\$1,200-\$1,500

21. Artist's System Cane

A very nice example in fine condition which has three compartments, the first holds a glass vial which once contained water or brush cleaners, the second compartment has various compartments for paint and paint mixing which is held to the shaft by a brass latch, the third unscrews for brush storage, nice bamboo shaft with great patina and a metal ferrule. O.L. 37"

\$700-\$1,000

22. Gun Cane

A horn handle which has a fancy engraved collar with a serial number of 032, the collar is also marked "Canne Etoile- cal. 74 m/m", handle unscrews from the shaft which is the barrel and it still has an original brass used cartridge shell, French, original removable shell extractor ferrule, H. 4 1/2 x 4 1/2" O.L. 36"

\$1,400-\$1,600

23. Amber Dress Cane

Ca. 1875-A 1/2" thick amber disc atop a fruitwood handle, thick ebonized shaft and a metal ferrule, H. 2 1/2" x 1 1/4" O.L. 34"

\$500-\$600

24. Cheroot/Cigar System Cane

Ca. 1890-A silver handle which has been crosshatched with fine decoration which unscrews to produce an interesting 16" long telescoping holder with horn mouthpiece and tip, hardwood shaft and a metal ferrule. H. 2" x 1/2" O.L. 35"

\$500-\$700





27.



26.



28.



25.



29.

25. Cigar Smoker's Ashtray Cane

Ca. 1920- A signed silver handle with a hinged ashtray atop with a silver holder for a cheroot, mechanism works fine, ebonized shaft and a horn ferrule.
H. 2" x 2" O.L. 35 1/2"

\$500-\$700

26. Brigg Gold Dress Cane

Ca. 1910- A fine Brigg example of a gentlemen's dress cane with a 10 karat gold end cap and collar, collar is signed Brigg, London, with hallmarks and engraved with the owner's initials and his address on Lowndes Square in London, a very unique high end, top of the line ebonized hardwood shaft and a metal ferrule, H. 7 x 4 1/2" O.L. 38"

\$800-\$1,000

27. Rare Tea Bush Cane

Ca. 1875- A tea wood shaft which is engraved "From a Tea Bush on Borratra Tea Est., Messrs Bkamer Alwrie Calcutta," original condition with a metal ferrule. O.L. 36"

\$400-\$500

28. Cigar Lighter Cane

Ca. 1900- An unusual example of a fire starter flintlock mechanism which were often used as a tool of the trade in a smoking room, brass mounted working flintlock mechanism in the shape of a dueling pistol, some engraving throughout, brass collar, faux bamboo hardwood shaft and a horn ferrule.
H. 5" x 1 1/2" O.L. 38"

\$800-\$1,200

29. Last Supper Stanhope Cane

Late 19th Century- A carved fruitwood handle with various flowers and foliage which has a Stanhope of the last supper inset into the top flower, thick bulbous silver collar, hardwood shaft and a metal ferrule, H. 5" x 3 1/2" O.L. 36"

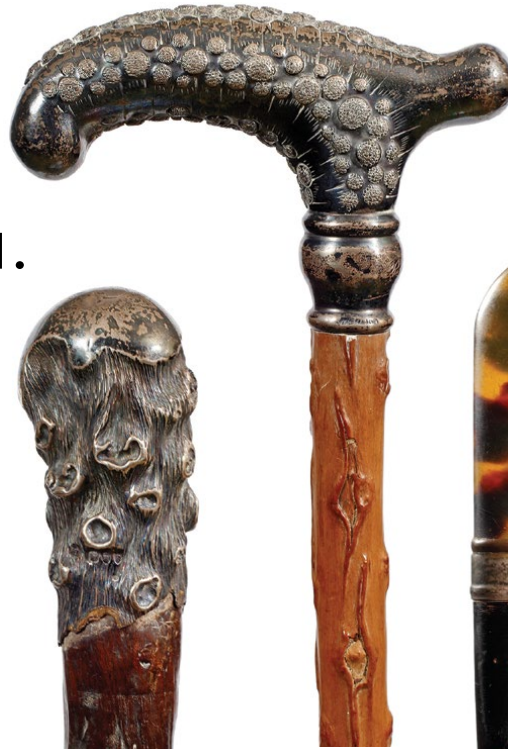
\$600-\$700

30. Shell Dress Cane

Ca. 1890-A ladies or child's tortoiseshell dress cane with a single piece shell handle, marked sterling collar, naughty ebonized hardwood shaft and a metal ferrule.

H. 2" x 2 1/2" O.L. 29"

\$500-\$600



32.

31.

31. Silver Country Cane

Ca. 1870-A handsome coin silver handle which appears to be a continuation of the briarwood shaft, original patina and a metal ferrule.

H. 3 1/2" x 1 3/4" O.L. 36"

\$500-\$700



30.

32. Silver Sand Dollar Dress Cane

Ca. 1890-A signed silver handle with a nautical motif of many sand dollars, signed sterling collar, signed "R.F.S. & Co.," exotic natural grown shaft and a metal ferrule.

H. 2 1/2" x 4" O.L. 34 1/2"

\$500-\$700

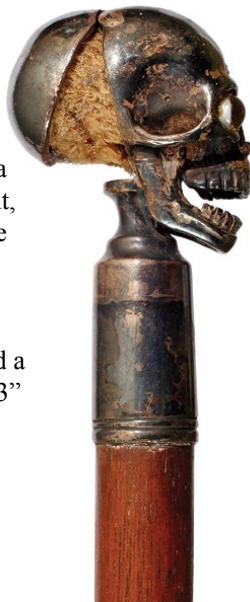
33. Owl Folk Art Cane

Ca. 1885-A carved full frontal owl with two color glass eyes, single root and spur shaft and a metal ferrule.

H. 2 1/2" x 2" O.L. 29"

\$350-\$500

34.



33.



34. Silver Skull Cane

Ca. 1875-An unusual container cane which houses a sponge with a pomander/vinaigrette compartment, the top of the skull is hinged so the entire back will open, tested to be at least 800 silver, scary two color glass eyes, movable lower jaw, silver collar, exotic wood shaft and a metal ferrule. H. 1" x 1 1/2" O.L. 33"

\$700-\$900

37.



36.



35.



35. Baleen Nautical Dress Cane

Ca. 1830-Silver mounted baleen one piece cane, floral embossed silver handle on a reeded and spiraling twisted shaft, the baleen has been shaped to be square and is twisted at the 22" mark with twists about every two inches and baleen ferrule. H. $\frac{3}{4}$ " x $\frac{3}{4}$ " O.L. 33"

\$1,000-\$1,400

36. Art Deco Dress Cane

Ca. 1920- A triangular Art Deco dress cane with a signed sterling, decorated end cap and angle collar, fruitwood shaft and a metal ferrule. H. $4\frac{1}{2}$ " x 2" O.L. 36"

\$350-\$400

37. Art Deco Dress Cane

Ca. 1920- Art Deco hexagonal dress cane with a signed sterling cigar style end-cap, 12 sterling inlaid discs, small silver collar, exotic hardwood shaft and a metal ferrule. H. $4\frac{1}{2}$ " x $1\frac{1}{4}$ " O.L. 35"

\$400-\$500

38. Art Deco Dress Cane

Ca. 1920-A signed sterling hand chased handle in triangular form, exotic wood triangular shaft and a metal ferrule. H. 3" x 1" O.L. 34"

\$300-\$500

39. Hound Dress Cane

Ca. 1885-A carved ebony hound with a pair of two color glass eyes, Wire woven upper collar and leather woven lower collar, some wear to the back of the collar, ebony shaft with pruned notches and a metal ferrule. H. $2\frac{1}{2}$ " x $3\frac{1}{2}$ " O.L. 31"

\$600-\$900

40. Black Coral Cane

Ca. 1875-A rare segmented black coral dress cane with a mother-of-pearl mounted knob atop and never had a ferrule. There are a few chips on the underside of the handle which would be expected of a cane of this rarity. H. $1\frac{1}{2}$ " x $\frac{3}{4}$ " O.L. 33"

\$2,000-\$2,500

39.



40.



38.



41. Horn Dress Cane

Ca. 1890-A very fine elongated silver handle which is not signed but tested to be at least .800 silver, 3/8" flexible rhino shaft and a metal ferrule.

H. 3" x 7" O.L. 36 1/2"

\$2,200-\$2,500

42. Silver and Ivory Dress Cane

Ca. 1885-An unusual silver handle signed Gorham & Co. of what appears to be a mountain man with an ivory face and one ivory hand, possibly the silver hat is a coon skin hat and this cane could represent Davy Crockett, or possibly a hunchback, ebonized shaft and a metal ferrule, "under the new ivory laws that will take effect this year, this will be a legal ivory cane due to it being manufactured in America and dated correctly."

H. 6 1/2" x 2 1/4" O.L. 34"

\$1,000-\$1,500

43. Sunflower Silver Dress Cane

Ca 1890-A most unusual example of a silver handle with a sunflower engraved and cast atop, reeded sides and leaves, small unreadable hallmark, the best paper washer shaft that we have ever seen and a metal ferrule.

H. 2 1/2" x 1 1/2" O.L. 34 1/2"

\$1,000-\$1,200

44. Snuff Box Cane

Ca. 1850-Large horn handle with a decorative trick snuff box, the handle must be hit upside down then you must swing it to one side and slide the second part of the handle forward to expose the snuff box, large silver collar, pair of carved eyelets, original patina, twigspur shaft and a metal ferrule, probably French.

H. 5" x 4 1/2" O.L. 35"

\$700-\$1,000



41.

42.



43.

44.





45.

45. Art Deco Cigarette Lighter Cane

Ca. 1920- A signed sterling "Virght" American working mechanism, reeded top and sides, not signed but tested to be sterling, ebonized shaft and horn ferrule. H. 3 3/4" x 3/4" O.L. 35"

\$400-\$600



48.



46.

46. Folk Art Bearded Man Cane

Dated 1894- A fine carved bearded man with flowing hair, inscribed and dated silver collar, a one piece cane and carving of exotic burl wood and a large metal ferrule.

H. 4 1/2" x 3 1/2" x 2 1/4" O.L. 38"

\$500-\$700



47. Silver Dress Cane

Ca 1895-A nice original handle modeled with a ribbon tied wreath and swags, S monogram for the owner, marked .800 silver with unreadable maker's marks, ebonized shaft and a metal ferrule.

H. 4 1/2" x 2 1/4" O.L. 36"

\$400-\$500



47.

48. Flick Stick Dagger Cane

Ca. 1880-A steel handled working flick stick with a 5 1/4" blade, simulated poker-wood shaft and a matching steel ferrule.

H. 2 3/4" x 1 1/4" O.L. 36"

\$600-\$800



49.

49. Art Nouveau Dress Cane

Ca. 1890-A well cast .800 silver handle, probably German, ebonized shaft and a horn ferrule.

H. 4" x 1 1/2" O.L. 35"

\$300-\$500

50. Florentine Dress Cane

Ca. 1890-A silver mounted handle, maybe in the shape of shells, fine ebony shaft and a metal ferrule. H. 3" x 2 1/2" O.L. 35 1/2"

\$400-\$450



50.

51. Eagle Head Dress Cane

Ca. 1900-An unusual P-shaped unsigned but sterling handle with a stylized eagle, various leaves and designs throughout, small unreadable hallmark, coconut wood shaft and never had a ferrule.

H. 2 1/8" x 4 1/4" O.L. 34 1/2"

\$500-\$700



51.

52. Life Preserver Defensive Cane

Ca. 1885-A nice example of this genre of canes with a 15" brass and wire woven flange within the shaft, silver metal collars, extremely hard bamboo shaft and a metal ferrule. H. 8" x 6" O.L. 36"

\$600-\$700



53.

53. Naughty Leg Cane

Ca. 1850-A single piece wooden carved hardwood stick with an expert carving of a ladies leg with a gold metal bracelet and a horn ferrule. H. 4 1/2" O.L. 35 1/2"

\$1,000-\$1,200



52.

54.

54. Italian Pink Coral Cane

Ca. 1870-A rare and most desirable pink coral cane which is carved throughout in a swirls pattern, the entire handle is carved with three branches atop, five piece segmented handle, sterling collar, partridgewood shaft and a brass ferrule. H. 8" x 2 1/2" O.L. 36"

\$7,000-\$8,000

55. Silver Inlaid Eagle Cane

Ca. 1880- A most interesting carving of an eagle with two color glass eyes, and hand chased silver inlay, the inlay is some of the best we have ever seen on a folk art eagle, hardwood shaft and a metal ferrule. H. 5 1/4 x 3 3/4" O.L. 35"

\$600-\$700

56. Hawk/Falcon Silver Dress Cane

Ca. 1885- A high relief casting of a bird of prey perched in the kill position, unsigned sterling handle with small unreadable hallmarks, coconut wood shaft and a metal ferrule. H. 3 1/2" x 4 1/2" O.L. 37 1/4"

\$800-\$1,000

56.

55.

57. Horn and Gold Dress Cane

Ca. 1890-It is our belief that this is a full rhino cane with a 14 karat rose gold hallmarked collar and a metal ferrule. H. 4 ¼" x 6 ½" O.L. 34"

\$2,500-\$3,000



57.

58. English Gargoyle Dress Cane

Ca. 1900-A most unusual bearded Gargoyle with horns, attached cartouche which is signed "London L&S Styl," hallmarked silver collar, faux bamboo exotic wood shaft and a metal ferrule. H. 4" x 6" O.L. 34"

\$700-\$900



58.

59. French Buggy Whip Cane

Ca. 1880-A most unusual example which has a silver handle with a disc atop which has a pair of initials and a nine pointed crown above, there's also an inscription on the collar "TY presente 6 JUIN." Unusual sinew woven shaft which is flexible but firm and a metal ferrule.

H. 1" x 1" O.L. 31 ½"

\$500-\$700



59.

60. Cigarette System Cane

Ca. 1920-An unusual system cane with a threaded silver twisting collar, by twisting the collar the shaft exposes a compartment for carrying one cigarette, unreadable hallmarks on the collar unusual hardwood bamboo shaft and a metal ferrule. H. 4 ½" x 7 ½" O.L. 34 ½"

\$500-\$600



60.

61. Ebony Dress Cane

Ca. 1880-A one piece ebony cane with carved twig spurs and a 2" brass ferrule. O.L. 32"

\$200-\$300



61.



62.



64.

62. Russian Snuff Box Cane

Ca. 1900-The handle is formed from a Karelain or Masur Birch tree. Hinged door with a tortoiseshell interior, fluted silver metal collar, thick malacca shaft, metal ferrule.

H. 3 1/2" x 1 1/2" O.L. 36"

\$1,200-\$1,500

63. Shell Camera Tripod Cane

Late 19th Century-A transparent tortoiseshell handle and a brass collar which can be removed to expose the mechanism of the tripod, walnut shaft with original patina and never had a ferrule.

H. 2" x 2" O.L. 38"

\$1,500-\$1,800



63.



64. Bird Watcher's Telescope Cane

Early 20th Century-The handle doubles as a two draw 6" telescope in working condition, a grained leather cover wraps around the main section of the scope, by the turn of the wrist the scope unscrews and swings out from the handle, silver metal collar, malacca shaft and a metal ferrule. H. 1 1/2" x 4" O.L. 34 1/2"

\$1,500-\$2,000



65. Blow Gun Cane

Ca. 1890-A .32 center fire caliber defensive cane, metal handle unscrews to reveal a rubber lined mouth piece which needs some repair, by blowing into the handle the firing pin strikes the cartridge, a malacca shaft with a metal lining and a removable ferrule. H. 1 1/2" x 3/4" O.L. 34 1/2"

\$1,600-\$1,800



65.



66. Dumonthier Gun Cane

Ca. 1890-A rare example and probably the best by this maker, ivory knob handle, signed brass collar, ebony wood shaft, trigger drops from collar and loading is done by unscrewing the upper shaft, and original brass ferrule.
H. 1 ½" x 1" O.L. 36"

\$3,000-\$4,000

66.

67. Horn Sword Cane

Ca. 1880-A horn mounted wizard handle which appears to be rhino with various inlaid stars, ornate gold metal collar, push button 12" four sided etched dagger in fine condition, malacca shaft and a metal ferrule.
H. 3 ½" x 5 ½" O.L. 34"

\$1,600-\$1,800



67.

68. Best Narwhal Nautical Cane

Ca- 1860-Whale's tooth mushroom knob with a 3 ½" etched silver collar, the Narwhal starts at a diameter of 1.75" tapering to the 2" metal ferrule, one of the finest nautical canes with original patina that we have offered.
H. 2" x ¾" O.L. 35"

\$7,500-\$8,500

68.



70.



69.



69. Viennese Shell Dress Cane

Ca. 1880-A large compressed tortoiseshell handle with a silver gilt bird wearing an enameled four leaf clover appearing to be nesting within the fluted handle, small gold metal collar, ebony shaft and a 3" horn ferrule. H. 11 1/2" x 1 1/4" O.L. 37 1/2"

\$3,000-\$4,000

70. Nautical Stingray Cane

Ca. 1860-A rarely encountered French exotic material, made from a Dasyatis ray tail, silver handle with a filigreed initials "E.W.T" atop, two silver bands which hold a 9.5" original poison tail or barb, hallmarked handle, and a small metal ferrule. This is the finest example that we have ever offered. H. 1 3/4" x 1 1/4" O.L. 35 1/2"

\$4,000-\$4,200

71. Buggy Whip Cane

Ca. 1900-A two piece 6 ft. buggy whip cane in fine working condition, the shaft holds the balance of the whip which is tipped with a lash, signed silver metal "The Patent Cane Whip," leather covered shaft and a metal ferrule. H. 3/4" x 1 3/4" O.L. 36"

\$600-\$800

71.



72. Rare Music Stand Dog Cane

Mid 19th Century-One of the rarest of all system canes in fine condition, carved wood dog handle, ferrule is unscrewed from the shaft to expose the attachment for the sheet music holder can be the music holder is retrieved from the shaft by unscrewing the dog head which has a bronze collar which doubles as the attachment for the legs, a pair of ornate brass candle cups with ornate screw are held in the upper end of the cane, a nineteenth century engineering masterpiece. Museum quality. H. 4 ½" x 3" O.L. 36"

\$4,000-\$6,000

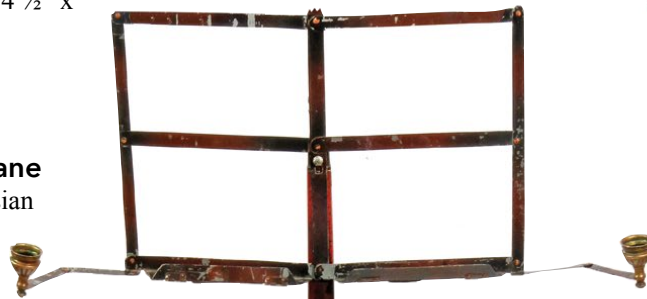
72.



73. Russian Inlaid Silver Cane

Ca. 1890-A nice example of Russian silver work in fine condition, cherry shaft and a metal ferrule. O.L. 34 ½"

\$350-\$500



74. Shell Inlaid Cane

Dated 1911-A signed Brigg silver wire inlaid mushroom handle with a tortoiseshell knob, heart engraved collar which is signed Brigg and "J.B.P. 1911", rich malacca shaft and a horn ferrule, 1 ¾" x 1 ½" O.L. 37"

\$600-\$900

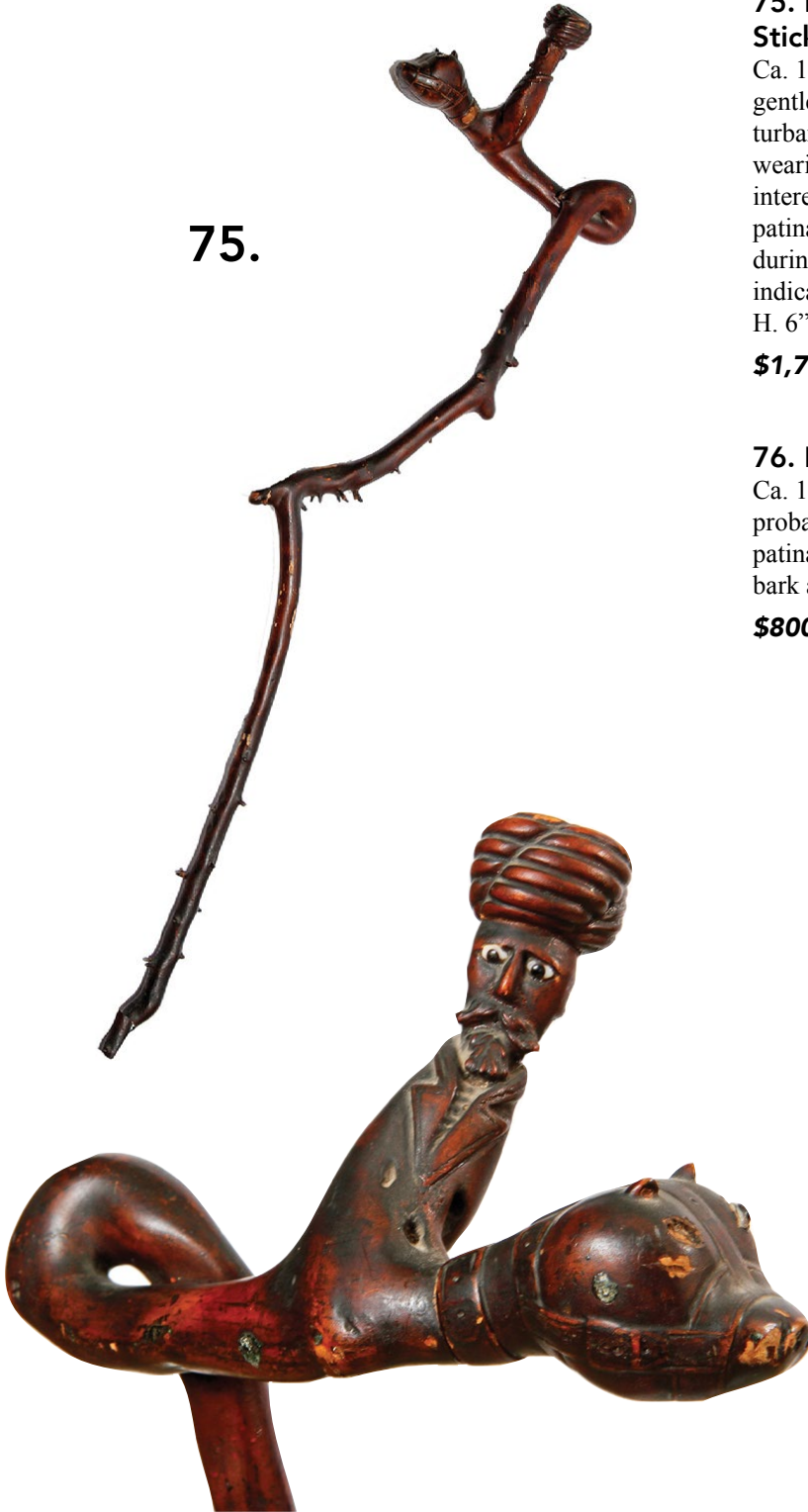
74.



73.



75.



75. French "Crazy Cane" Folk Art Stick

Ca. 1820-A one piece crazy cane with a gentleman with two color glass eyes and a turban riding what appears to be a cat or pig wearing a harness, animal has one glass eye, interesting twig spurs throughout, original patina and a metal ferrule. These canes surfaced during the post revolutionary period in France to indicate the disdain for the aristocracy.

H. 6" x 9" O.L. 35"

\$1,700-\$2,200

76. Folk Art Eve Nude Cane

Ca. 1850-An American carved folk art cane probably from a laurel branch and root, original patina and an early split in the face, original bark and a metal ferrule. H. 7 1/2" x 3" O.L. 38"

\$800-\$1,200

76.



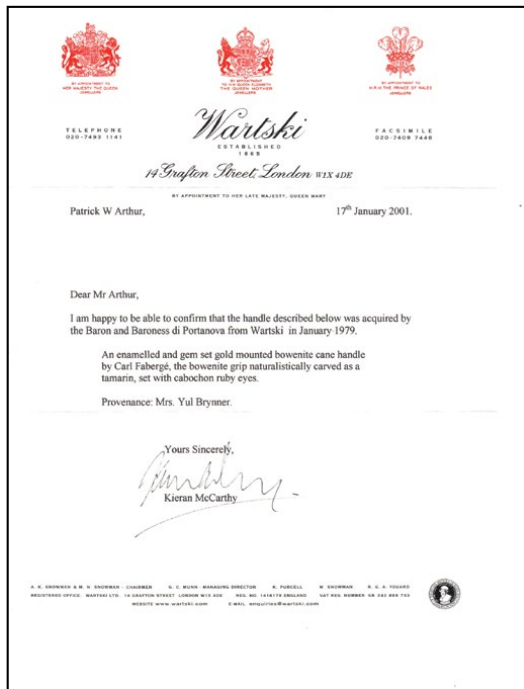
77. Faberge Jewelry Dress Cane

Early 20th Century-A bowenite carving of a Tamarin climbing monkey by Carl Faberge, set with cabochon ruby eyes, mounted with an enamel gold and diamond-set collar. Original marked wood fitted case.

Paperwork accompanies this lot with the Wartski, London bill for the sale of this handle to the Baron and Baroness Enrico di Portanova in the 1970's stating that it was from the collection of Mrs. Yule Brenner.

4 1/4" x 2 3/4" x 1 1/4"

\$25,000-\$30,000



77.



<p>Wartski ESTABLISHED 1888 118 Regent Street, London, W1B 5EA. TELEPHONES: 01754 8058 & 0754</p>	
<p>DATE PURCHASED OF THEIR LATE MAJESTIES KING EDWARD VII & KING GEORGE VI</p>	
<p>29th January, 1971</p>	
<p>The Baron Enrico di Portanova, Via F. III. Russol 14, Roma.</p>	
<p>To:-</p>	
<p>A jadeite carving of a Tamarin climbing Monkey by Carl Fabergé, set with ruby eyes, mounted with an enamelled gold and diamond-set collar as a parasol handle.</p>	
<p>Fabergé often worked with dark Siberian nephrite but only rarely with pale green jadeite, and the present example must be accounted a rarity.</p>	
<p>In original wood case.</p>	
<p>Received by cheque £7,200- 29th Jan 1971 C. & H. WARTSKI LTD With compliments and thanks.</p>	



78. Silver Dress Cane

Ca. 1910- A checkerboard .800 silver handle, ebonized shaft and a horn ferrule.

H. 3 ½" x 10" O.L. 36 ½"

\$250-\$350



79.

79. Jungle Cane

Ca. 1910-An unusual woven rattan L-shaped handle, completely woven throughout the handle and the shaft, silver metal band and a metal ferrule.

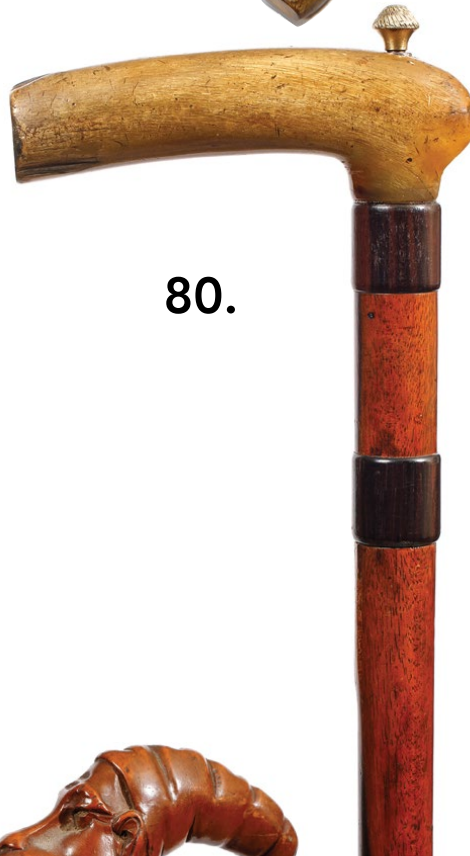
H. 2 ½" O.L. 34 ½"

\$200-\$300

78.



80.



80. Percussion Gun Cane

Ca. 1885-A horn handle percussion pistol cane which has a drop mechanism trigger and an 8" steel barrel, working condition, exotic wood shaft and a horn ferrule. The static swamp barrel is inlaid with a silver line on each end.

H. 4 ½" x 5 ½" O.L. 33"

\$1,600-\$1,800

81. Briggs Silver Dress Cane

Ca. 1900-A silver presentation handle to a gentleman for his service, malacca shaft and a horn ferrule. H. 1" x 1" O.L. 37"

\$300-\$350



81.



82.



82. Monkey Folk Art Cane

Ca. 1885-A one piece twigs spur branch which has a monkey with only one two color glass eye in a night cap, the cane is engraved "Sir John Morris, Jr., Elmsdale", Wolver Hampton", original patina and metal ferrule.

H. 4" O.L. 35 ½"

\$350-\$500

83. Mr. Pig Cane

Ca. 1920-A custom cast silver metal handle of a pig in a smoking jacket, unmarked ebonized shaft and a metal ferrule.

H. 6 ½" x 2" O.L. 40"

\$800-\$1,000

83.

**84. Folk Art Snake Cane**

Ca. 1900-An unusual diamond willow cane with what appears to be a stylized snake carved in the second pod, 2 ½" iron collar, original patina, and a metal tip ferrule. O.L. 36 ¼"

\$300-\$400

85. Briarwood Folk Cane

Ca. 1870-A single piece carved folk cane with a grotesque face with a couple of age splits, original patina and no ferrule.

H. 5" x 7 ½" O.L. 38"

\$400-\$600



85.

86. Silver Court Cane

Ca. 1740-A fine example of an ornate coin silver Georgian cane with embossed flowers on the coir silver handle and various collars, original lanyard hole: with ornate silver lanyard holder, great malacca shaft and a 4" brass ferrule.

H. 10" x 1" O.L. 39"

\$1,300-\$1,600

86.



84.

87.



87. Art Deco Stick Pin Cane

Ca. 1915-A crook handle stick pin which consists of 15 rose cut diamonds set into gold with an ebony shaft and a gold ferrule. It comes with its' original case from the royal jeweler at the royal exchange Manchester, England.

\$5,000-\$6,000

88.



88. Silver Weighted Cane Stands

Ca. 1900-A pair of weighted cane holders once belonging to Catherine Dike. H. 4" x 3"

\$1,000-\$1,500

89. Rare Dance Card Cane

Ca. 1870-A dance card cane made of ebonized hardwood which is carved and contains five ivory dance cards, the cards are held in place by a floral shaped pin and a brass collar, ebonized shaft and a metal ferrule.

H. 1 1/4" x 5" O.L. 36"

\$2,000-\$3,000



89.

90. Art Deco G.ROMANL Dress Cane

Ca. 1920-A very rare artist signed Art Deco handle with inlaid ivory dots in a flower pattern, handle is signed by ROMANL on the lower side, exotic wood shaft, the entire cane including the handle has definite square art deco lines and a square ivory ferrule.

H. 6" x 7/8" O.L. 36"

\$1,000-\$1,500

90.





91.

91. Art Deco G.ROMANL Dress Cane

Ca. 1920-A very rare artist signed Art Deco handle with inlaid mother of pearl dots in an oval pattern, handle is signed by G ROMANL on the lower side, exotic wood shaft, the entire cane including the handle has definite square Art Deco lines and a square ivory ferrule. H. 6" x 7/8" O.L. 36"

\$1,000-\$1,500

92. Freedom of London Cane

Dated 1866-A container cane which is marked "Copy of Freedom City of London," on the handle, small ivory collar, handle contains the paperwork of "William Charles Stamp" whom admitted this paperwork to Queen Victoria on June 30th, malacca shaft and brass ferrule. H. 4" x 1 7/8" O.L. 36"

\$800-\$1,200

93. Silver Tiger Dress Cane

Ca. Late 19th Century-A continental coin silver snarling tiger cast with lifelike details, a pair of glass eyes, stamped B.H., other unreadable hallmarks, ebonized shaft and a metal ferrule. O.L. 36"

\$1,500-\$1,800



92.



93.

94. Gold Quartz Dress Cane

Dated 1867-A prime example of a gold quartz cane with a hand worked gold handle, quartz is heavy with gold, the side panel of the handle is inscribed "Frank Tillman" and another is inscribed "March 14, 1867", nice original cane with great goldsmithing, half bark malacca shaft and a metal ferrule, H. 2 ½" x 1 ¼" O.L. 34"

\$6,000-\$8,000



94.

95. Rare Native American Flag Cane

Ca. 1875- A most unusual example of a Native American cane with three woven American flags which are made from horse hair, intricate leather work throughout the entire handle and shaft, horse hair woven lower collar done with a storm pattern and a metal ferrule, Very fine condition with original patina and varnish work O.L. 36"

\$3,000-\$4,000



95.



www.AuctionAuction.com

Kimball M. Sterling, Inc. (TFL-1915)
 125 West Market Street
 Johnson City, Tennessee 37604
 kimballsterling @ earthlink.net
 423.928.1471

Photography by James Price
 Catalog Design by KT Design, LLC
www.ktdesignllc.com
 © Copyright 2016 Kimball M. Sterling, Inc.