

Kimball & Victoria
Sterling
present a

Spring Cane Auction

Saturday,
June 22
11:00 a.m. EST



www.AuctionAuction.com

TERMS & CONDITIONS

1. Cash or check. A 20% buyers' premium will be added to the hammer price as part of the sale price for all bidders. Internet bidders will pay 22%. We reserved the right to hold purchases until the buyers checks clears if buyer is not known by us. Bank letter of credit is acceptable.

2. Mail or phone bids are accepted; the firm may require a deposit.

3. Kimball M. Sterling, Inc. has endeavored to catalog and describe the property correctly. All property is sold as is and neither the auction company nor the consignor will be responsible for descriptions, genuineness, provenance or condition of the property. No statement in the catalog made orally at the sale or otherwise shall be deemed to be a warranty, representation, or an assumption of liability.

4. In the event of any dispute between bidders, the auctioneer shall have total discretion to determine the successful bidder, in which his determination shall be final or to re-offer and resale the article in dispute. Title of the item or items purchased by the bidder will pass at the fall of the gavel and declaration of bidder. This is not an approval auction. All measurements are approximate.

5. Principal auctioneer: Kimball M. Sterling #2467. B. Elizabeth Sterling, auctioneer # 5757. Firm Kimball M Sterling Inc. TFL-1915

6. Bidders may bid live on the Internet by visiting <http://www.auctionauction.com> You may also view the auction at this site and bid by phone.

7. Communications:
Telephone 423-928-1471.
Fax 423-928-2816.
Cellular 423-773-4073, 423-773-4072.
Email kimballsterling@earthlink.net

8. Kimball M Sterling has worldwide shipping available. Mr. We do not ship protected items overseas but can put you in contact with a source that is very reliable and can handle all of your needs.

9. Kimball M. Sterling, Inc. will not be held responsible for bids received on the day of the auction, unexecuted absentee bids, phone bidders not contacted or slow Internet bids. Although we do attempt to get all bids executed problems do occur. There will be no recourse from the bidder. We will not be responsible for items left on our location for over 30 days.

10. Sale will be conducted at 125 West Market Street, Johnson City, Tennessee. 37604. Announcements day of the sale take precedence over pre-sale advertising. Any litigation that pertains to this auction will be conducted in the county of Washington in Tennessee and is agreed upon by registering for this auction.

11. Airport is the Tri-Cities Airport, which is approximately 20 miles from the gallery. Internet catalog and live bidding available at www.auctionauction.com Best Western Hotel: 423-282-2126. A very fine hotel which offers Sterling Auction a discount rate is the Carnegie Hotel 1216 W State of Franklin Rd, (423) 979-6400.

12. Please call for condition report on sale lots or email us. We do send out multiple photos by email of any lot in the auction. By registering for this auction you accept the terms.

13. Parking service is free.

Kimball & Victoria
Sterling
present a

Spring Cane Auction

Saturday,
June 22

11:00 a.m. EST

Preview: Anytime before
the auction by appointment

Friday, June 21
Noon until 5:00 p.m.

Saturday, June 22
9:00-11:00 a.m.

Live on the Internet at
LIVEAUCTIONEERS.COM
Two Time Winner of Best of Show
From the National
Auctioneers Association

Kimball M. Sterling Auction Gallery
125 West Market Street
Johnson City, Tennessee 37601
[kimballsterling @ earthlink.net](mailto:kimballsterling@earthlink.net)
423.928.1471



www.AuctionAuction.com

1. Siam Horn Dog Head Cane

Ca. 1880-Large L-shaped handle with a long muzzled and floppy eared dog head, inset glass eyes and an engraved belt collar, ebony shaft with horn ferrule and plain silver collar.

H. 4 1/4" x 4", O.L. 35 1/2"

\$400-\$500



2.

2. Tula Silver Dress Cane

Ca. 1900-Sizeable L- handle with a slightly arched hand rest and elegantly rounded edges entirely decorated with a tiny chess board pattern, Viennese hallmarks on silver collar, ebonized hardwood shaft and a metal ferrule.

H. 4" x 2 3/4", O.L. 34 1/2"

\$300-\$500



3. Ivory Cat Cane

Ca. 1880-Large ivory handle and its wide finely chased silver collar on a malacca shaft with a stag horn ferrule. The portrait is masterly rendered. The obscured hallmarks on the silver collar attest to the English origin.

H. 3 3/4" x 3", O.L. 36"

\$3,000-\$4,500

1.

4. Figural Day Cane

Ca. 1900-Large flamed lemonwood handle carved to depict what seems to be a catfish with the prominent whiskers, well figured scales and inset glass eyes, ebony shaft with a plain silver collar and a horn ferrule.

H. 5" x 2 1/2", O.L. 37 1/4"

\$600-\$800

3.



4.





7.

5. Ivory Cat Heads Cane

Ca. 1900-Ivory opera handle carved with five cat heads. The carving is fine and emphasized with inset glass eyes .silver collar, ebony shaft and a horn ferrule. H. 4 ¼" x 1 ¼", O.L. 36

\$1,500-\$2,000

6. Buffalo Horn and Ivory Lion Cane

Ca. 1910-Large and imposing black horn prone lioness with inset ivory teeth and glass eyes, ebony shaft with a horn ferrule and finely engraved silver collar with obscured English hallmarks. H. 4 ¼" x 1 ¾", O.L. 37"

\$1,000-\$1,500

6.



7. Ivory Piqué Cane

18th Century-Ivory knob turned in a reversed pear shape ornate with repeating panels of tortoiseshell and brass wire piqué on the side bundling at the top with a matching and radiating pattern. Malacca shaft with eyelets and a 4 ¼" tall white metal ferrule with an iron tip. H. 4 ½" x 1 ½", O.L. 36 ½"

\$1,500-\$2,000

8.



8. Toledo Dress Cane

19th Century-L-shaped steel handle with delicate 24 karat gold and silver wire inlay on a dark finished background. The quality of workmanship is in the taste of the Zoluagas . Ebony shaft, mint condition and a metal ferrule. H. 2 ½" x 2", O.L. 36 ¾"

\$600-\$800

5.

9. Pomander Cane

Ca. 1880-Very large ivory handle with an unscrewing top with large vent hole and deep cavity for scents or powders. The body of the handle is carved with an elaborate hunting scene with a riding noble man blowing the horn surrounded by numerous huntsman and their dogs. The handle still retains its initial malacca shaft and aged well with a great patina. H. 5 ½" x 1 ¾", O.L. 36 ½"

\$1,800-\$2,800

10. Classic Hard Stone Dress Cane

Early 1900s-Stertching Milord rose quartz handle with the desirable natural and intense pink color, cocobolo shaft with a plain silver collar and a horn ferrule. Luxurious and trendy. French. H. 2 ¾" x 1 ¼", O.L. 37 ½"

\$400-\$600

11. Erotic Ivory Cane

Circa 1890-A museum quality carving of a nude woman inspired by the classic motif of Aphrodite taking her bath. A gracefully bent posture beautifully exposes her magnificent body with a perfect back and bottom with subtly shown intimate parts, while the sideward turned head shows a round face with dreamy eyes framed by curling wet hair. Carved with the attention that an artist gives to a selected creation, this handle is in the French taste of the fin de siècle. Malacca shaft with a metal ferrule. H. 4" x 2 ¾", O.L. 40"

\$5,000-\$7,000



10.



9.

11.





12.



13.



14.

15.



12. Mildly Erotic Siren Cane

Ca. 1870-Walrus ivory pistol grip handle with a dark horn siren applied to the stretching and knobbed vertical stem, dark rosewood shaft with a grooved silver collar and a stag horn ferrule. H. 4 1/4" x 2 3/4", O.L. 36 3/4"

\$1,500-\$2,500

13. Horn Cat and Mouse Cane

Early 1900s-Horizontal black horn handle carved with a cat and a mouse, chased silver collar, glass eyes ebony shaft and a horn ferrule. H. 4 1/4" x 36 3/4", O.L. 37"

\$700-\$900

14. British Buttock Erotic Cane

Late 19th Century-Erotic ivory ball knob with delicate carving and incredible miniature detail, ebony shaft, silver collar with Birmingham hallmarks and a horn ferrule. H. D. 1 1/2", O.L. 36 3/4"

\$2,000-\$3,000

15. Parade Hard Stone Dress Cane

Ca. 1870-Red and white layered carnelian knob with its elaborately hand chased and engraved silver gilt "Vermeil" collar, light taned malacca shaft and a metal ferrule. This cane survived in mint condition and displays the elegance of Paris. H. 3 1/2" x 1 1/4", O.L. 34"

\$1,000-\$1,500

16. Reynard The Fox Cane

Obscured Birmingham hallmarks, ca. 1920-Very large figural handle of the notorious Reynard, Well modeled and silver cast with a lot of fine detail and mounted on a superb malacca shaft with a stag horn ferrule. H. 6" x 2 1/2", O.L. 42"
\$1,500-\$2,000



16.

17. Figural Hardstone Dress Cane

Ca. 1900-The handle is cut of a shimmering tiger eye to depict an eagle head with a beautiful feather coat, strong and curving beak. The carving takes advantage of the golden hues of the stone to increase its visual appeal while pair of inset rock crystal eyes add interest and liveliness to the predatory bird rendering. Ebony shaft with a horn ferrule and a silver collar with a presentation entwined initials engraving. It has affinities to the creations of Carl Faberge and falls in the field of Objects of Vertu. H. 3 1/2" x 2 1/4", O.L. 38"
\$4,000-\$5,000

17.



18. Ivory Elephant Cane

19th Century-A substantial figural ivory knob carved to depict an elephant tenderly protecting its baby with its long trunk flanked by a pair of mighty tusks. Unusual fine detail to the faces with tiny eyes as well as to the skin and tail, ebony shaft with a horn ferrule. Top-rate London quality and praised by age and a wide and gilt collar engraved "Presented To Mr Geo. Brooks From Austin Rudd, "Alladin", 1900". H. 3" x 2 3/4", O.L. 37 1/2"
\$3,000-\$4,000

18.





19.



21.

19. Horn Elephant Cane

Ca. 1900-A well carved African elephant head with large ears and a long trunk flanked by a pair of mighty tusks, plain silver collar, ebony shaft and a metal ferrule. H. 5" x 2 1/4", O.L. 36"
\$700-\$900

20. Ivory Frog Cane

Ca. 1890-Large and well carved squatting amphibian perched on a wood stem with clamping front and hind legs to secure its balance. The amusing flair of the frog with apparent back ridge is accentuated by a slightly raised head with two large protruding eyes. Stepped partridge shaft, ivory collar and a metal ferrule. Superb quality and pristine condition much like the nephrite carvings by Faberge. H 4 3/4" x 2 1/2", O.L. 37 3/4"
\$2,000-\$3,000



20.

21. Horn and Ivory Duck Day Cane

Ca. 1890-Black horn duck with gracefully bent neck and ivory feather in its beak. The bird is well proportioned, finely carved with a detailed feather coat and emphasized with an inset glass eye. Ebony shaft with a twin folded silver collar and a horn ferrule. H. 2 3/4" x 2 3/4", O.L. 36 3/4"
\$900-\$1,200



22.

22. Sword Cane

Ca. 1890-Silver pistol grip handle on a rosewood shaft with a horn ferrule. 7 1/4" down from the top, the shaft breaks in two pieces through a friction lock device to release a 10" square, beautifully jeweled and etched steel blade signed "HS" and "LONDON". First rate elegant and inconspicuous defense cane in a well refreshed and superb condition. H. 2 3/4" x 2 1/2", O.L. 36 1/2"
\$1,500-\$2,000

23. Ivory Portrait Cane

Ca. 1910-Giant ivory handle depicting a crown African Chief, malacca shaft and a horn ferrule. Well carved Anglo-Colonial cane and superbly conserved. H. 5 ¼" x 2 ½", O.L. 35"

\$1,000-\$1,500



23.

24. Flute Cane

Ca. 1900-Ebony flute with nickel silver collars and removable cap, ebony shaft with a worn out ferrule. The removable flute is attached to the shaft with a friction locking device, is intact and can play fine music in the right hands. Flute 14 ½" x 1", O.L. 39"

\$800-\$1,000



24.

25. Ivory Cat Cane

Ca. 1890-Cat snoozing in a woven basket, ebony shaft with a silver ring collar and a horn ferrule. The lithe-bodied, feline flair is well rendered and its approach speaks for an English origin. H. 2" x 1 ¾", O.L. 36 ¼"

\$1,500-\$2000



25.

26. Camel Cane

Ca. 1880-Large hardwood camel head with a parade harness and inset glass eyes, well chased silver collar and rosewood shaft. H. 2 ¾" x 2 ¾", O.L. 38 ¼"

\$700-\$900



26.

27. Ivory Turtles Cane

Ca. 1890-Ivory handle carved with four turtles behind one another, silver ring collar, ebony shaft and a horn ferrule. H. 4 ¾" x 2", O.L. 36 ¼"

\$1,200-\$1,800



27.



28.

28. Cat Day Cane

Ca. 1920-Boxwood handle carved with a charming cat portrait, rosewood shaft with a silver collar and a brass ferrule.
H. 3 1/4" x 2 1/2", O.L. 35 3/4"

\$400-\$500



29.

29. Ivory Cats Cane

Late 19th Century-Large L-shaped ivory handle carved with three cats resting beside one another, elaborately chased silver collar, engraved "A.K.SPENCE SPILSBY" and struck with Birmingham, malacca shaft and a stag horn ferrule.
H. 4" x 1 3/4", O.L. 36 3/4"

\$1,800-\$2,500



30.

30. Silver Dress Cane

Ca. 1870-Well balanced Derby silver handle hand chased and engraved with scrolls and foliage in the Baroque taste and personalized with the engraved initials "AH". Wide silver collar, ebony shaft with a horn ferrule. 800 hallmarks.
H. 4" x 3 1/2", O.L. 33 1/2"

\$600-\$800

31. Faux Tortoise Dress Cane

Ca. 1935-A molded crook handle, signed sterling collar, ebony shaft and a horn ferrule. H. 4 1/2" x 3 1/2", O.L. 34"

\$200-\$300



31.

32. Ivory Arab and Lion Dress Cane

20th Century-A massive, well carved ivory handle done in great detail, ornate gold-filled collar, rich snakewood shaft and a metal ferrule. H. 5" x 2", O.L. 36"

\$2,000-\$2,500



33.

33. Wood and Ivory Dog Cane

Ca. 1925-A carved wooden ivory dog with an ivory snout a pair of two color glass eyes, an English hallmarked silver collar, exotic wood shaft and a horn ferrule. H. 5 1/2" x 1 1/2", O.L. 37"

\$600-\$900



32.

34. Ivory Bull Dog Cane

Ca. 1910-A nice example of a bulldog carving with two color glass eyes, presentation silver metal collar, exotic wood shaft and a metal ferrule. H. 2 1/4" x 2 3/4", O.L. 36"

\$1,200-\$1,400



35. Stag Bear Cane

20th Century-A well carved stag handle which is contemporary to its Malacca shaft and ivory ferrule. H. 5" x 3 3/4", O.L. 37 1/2"

\$400-\$500



35.

34.



38.

36. Stag Bear Cane

20th Century-A carved bear on a stump with a pair of glass eyes, signed sterling collar, exotic wood shaft and a metal ferrule. H. 3" x 3", O.L. 36"

\$500-\$600



36.

37. Stag Bears Fishing Cane

20th Century-A whimsical carving of three bears catching a large fish, silver-plate under handle, ebony shaft and a metal ferrule. H. 2" x 5", O.L. 37"

\$700-\$1,000

38. Ivory Greyhound Cane

Ca. 1915-A nicely carved ivory handle with two color glass eyes, larger than usual, British hallmarked collar, exotic wood shaft and a horn ferrule. H. 5" x 2", O.L. 35 1/2"

\$1,000-\$1,200

39. Hawaiian Historical Whalebone Cane

Dated 1840-According to attached papers this cane belonged to John Dielle who was one of the first missionaries to Hawaii and also one author to that island's Bible, handle is engraved with the name and date and signed sterling, inlaid tortoise and baleen, fluted column square block and spiral carving to the whalebone shaft, one inlaid section is missing and others are worm eaten. O.L. 36"

\$5,000-\$7,000



39.



37.



40. Remington Gun Cane

Late 19th Century-A gutta percha Remington dog gun cane, 22 cal., perfect gutta percha shaft and a brass firing ferrule, This cane is in fine working condition and a prime example. H. 2" x 2 3/4", O.L. 35"

\$7,500-\$8,500

41. Pig Ivory Lizard Cane

20th Century-A nicely carved wart hog tusk signed coin silver collar, signed "Swaine", rich snakewood shaft and an ivory ferrule. H. 2 1/2" x 4 1/2", OL-36"

\$600-\$800

42. Ivory Horse Cane

Ca. 1900- A fine carved handle with a sterling silver bridle, ornate signed sterling collar, thick malacca shaft and a metal ferrule. H. 4 1/4" x 1 3/4", O.L. 36"

\$1,800-\$2,200

43. Tortoise and Gold Sword Cane

Ca. 1840-A tortoise and gold handle which has various silver stars inlaid to the tortoise, some minor cracking but not annoying, tested low kt. gold handle, push button mechanism which releases a four sided 26" blade with a disguised leaf on the lower collar as the release, malacca shaft and a horn ferrule. H. 3 1/4" x 1", O.L. 33 1/2"

\$1,400-\$1,700



40.



42.



41.



43.





45.



44.

44. Massive Ivory Snake Cane

20th Century-A large finely carved handle with two snakes both showing forked tongues, a thick malacca shaft which appears to be earlier than the handle and an ivory ferrule. H. 2 ¼" x 4", O.L. 38"
\$2,500-\$3,000

45. Bludgeon Defensive Cane

Early 20th Century-A crook handle which has a 13 ½" spring slap jack attached, rich mahogany shaft and a horn ferrule. H. 5 ½" x 4 ¾", O.L. 35 ½"
\$1,000-\$1,200

46. Ivory Tiger Cane

Ca. 1890-A large carved tiger with average striations, ivory eyelets, honey malacca shaft and ivory ferrule. H. 2 ½" x 2 ¼", O.L. 35"
\$1,300-\$1,500



46.



47. Alligator Carved Cane

Ca. 1925-A full figure handle and a full figured carved gator on the shaft, orange wood and a metal ferrule. H. 5 ½" x 2", O.L. 35 ½"
\$250-\$400



47.



48. Bird Defensive Cane

Ca. 1930-A heavy cast silver metal bird, ebonized shaft and a metal ferrule. H. 3 ½" x 2 ½", O.L. 36"
\$300-\$400



48.

49. Nautical Knot Cane

Ca. 1860-A prime example of a sailor's work, probably done on a whaling ship, in fine condition, approximately 5 different knots with an early shellac covering the entire cane and a metal ferrule. H. 5 1/2" x 5", O.L. 36"

\$700-\$1,000

50. Ivory Fly Dress Cane

Ca. 1890-An unusual carved handle with flowers and a India inked house fly, ornate gold-filled collar, exotic wood shaft and a horn ferrule. H. 3 1/4" x 1 1/2", O.L. 36"

\$300-\$500

51. Chinese Ivory Dragon Cane

Ca. 1900-A fancy carved handle with a large dragon and various people, exotic wood shaft and a horn ferrule. H. 5" x 1 1/4", O.L. 36"

\$400-\$600

52. Diamond, Platinum and Tortoise Dress Cane

Ca. 1920-A solid and transparent blonde tortoise shell "Object of Virtue" handle on a well spotted snakewood shaft with an 18 kt gold collar and bronze ferrule, atop the handle is a platinum filigree monogram set with rose cut diamonds. H. 1 3/4" x 11 1/4", O.L. 36 1/2"

\$3,000-\$4,000



49.

51.

52.



50.





53.



54.



53. Jeweled Gold and Silver Owl French Dress Cane

Ca. 1880-A high end "Object of Virtue" silver casting with inset cabochon ruby eyes, a custom built two piece makassar ebony shaft and a bronze ferrule, the owl is perched on a snakelike creature, gold adorns the eye feathers, the nose and the talons. H. 3 1/4" x 1" x 1 1/4", O.L. 36"

\$3,500-\$4,500

54. Tortoise Shell and Silver Pique Cane

Ca. 1850-A true "Object of Virtue" the tortoise handle is decorated throughout with silver pique work and gold stars, pair shaped knob has inlaid gold lace with other pique work, ornate silver collar, rosewood shaft and a metal ferrule. H. 10" x 7/8", O.L. 38 1/2"

\$3,500-\$4,000

55. European Ivory Nude Dress Cane

Ca. 1885-A large carved handle with a beautiful nude and a tiger atop, high relief carving with minor damage to the right leg, silver collar, exotic wood shaft and a horn ferrule. H. 5 3/4" x 2 1/2", O.L. 39"

\$1,800-\$2,500

56. Asian Ivory Rat Cane

Ca. 1890-A multiple carved rat cane, some with beaded black eyes, high relief, silver metal collar, exotic wood shaft and a horn ferrule, two rats have minor chips to their heads. H. 4 1/2" x 1 1/2", O.L. 36"

\$600-\$900



55.



56.



57. Ivory Wolf and Dog Cane

Ca. 1900-An unusual carved handle in high relief with what appears to be a wolf and two hounds, signed sterling collar, ebony shaft and an ivory ferrule. H. 9" x 2", O.L. 33 1/3"

\$500-\$600

58. Asian Ivory Dress Cane

Ca. 1890-A highly carved ivory handle with various flowers and leafs, silver metal collar, exotic wood shaft and a horn ferrule. H. 1 1/2" x 4 1/2", O.L. 33 1/2"

\$350-\$500

59. Ivory Poodle Cane

Ca. 1925-A highly carved poodle ivory handle with beaded eyes, ornate gold-filled collar, rich hardwood shaft and an ivory ferrule. H. 2 3/4" x 1 1/4", O.L. 34 1/2"

\$500-\$600

60. Ivory Vineyard Cane

Ca. 1885-A carved ivory handle which has a group of grapes carved in high relief, ornate silver collar, malacca shaft and a horn ferrule. H. 4 1/2" x 3 3/4", O.L. 35 1/2"

\$300-\$400

61. Ivory Whippet Cane

Ca. 1925-A nicely carved dog with two color glass eyes, signed sterling upper collar, a pair of inlaid silver bands and silver double diamonds, hardwood shaft and an ivory ferrule. H. 1 1/4" x 4 1/4", O.L. 35"

\$400-\$600





62. Horn Sword Cane

Ca. 1885-An L shaped horn handle, possibly rhino, with a 13" signed London push-button and locking mechanism, woven metal collar, bamboo shaft and a metal ferrule. H. 5 1/4" x 3 1/2", O.L. 36 1/4"

\$600-\$800

62.



65.

63. North Wind Ivory Cane

Ca. 1900-A nice carving of "Mr. North Wind" himself, signed sterling and hallmarked collar, ebonized shaft and a metal ferrule. H. 3 1/4" x 1 1/2", O.L. 37"

\$300-\$400

64. Asian Mixed Metal Cane

Ca. 1900-A cast preying mantis cane done in silver with gold tones, signed Japanese cartouche, exotic wood shaft and a horn ferrule. H. 1 1/4" x 3 3/4", O.L. 34 3/4"

\$600-\$800

64.

65. Button Shoe Cane

Ca. 1900-A cast metal and silver plate shoe handle, thick hardwood shaft and metal ferrule. H. 4" x 3 1/4", O.L. 36 1/2"

\$300-\$500

66. Exotic Bird Cane

Ca. 1925-A snakeskin covered head with two color glass eyes, carved horn beak, small 8 kt gold collar, malacca shaft and a horn ferrule. H. 2 1/2" x 2 3/8", O.L. 34 3/4"

\$350-\$500

66.



63.



67. Ivory and Silver Dog Cane

Ca. 1900-A cast silver metal dog with ruby eyes is the end cap of a smooth ivory handle, silver metal collar, thick ebony shaft and a metal ferrule.

H. 4 $\frac{3}{4}$ " x 1 $\frac{3}{8}$ ", O.L. 35 $\frac{1}{2}$ "

\$500-\$600



67.

68. Lobster Claw Dress Cane

Ca. 1890-A very unusual carved mother of pearl lobster claw, silver metal collar, exotic wood shaft and a metal ferrule.

H. 3" x 1 $\frac{1}{2}$ ", O.L. 35 $\frac{1}{2}$ "

\$400-\$600



69.

69. Ivory Lion Cane

Ca. 1900-A carved lion with two color glass eyes, silver metal collar, palm wood shaft and a metal ferrule. H. 4" x 1 $\frac{1}{2}$ ", O.L. 35 $\frac{3}{4}$ "

\$500-\$700



70. Erotic Ivory Ball Cane

Ca. 1880-This is one of the best carvings that we have seen in this style. The two very daring scenes within the sphere are expertly carved with extraordinary facial expressions and body language in an incredible miniature detail. The hinge is very good and tight on this example with a rosewood shaft, wide silver collar and a brass ferrule. H. 2 $\frac{1}{2}$ " diameter, O.L. 37 $\frac{1}{2}$ "

\$5,000-\$7,000



70.



68.



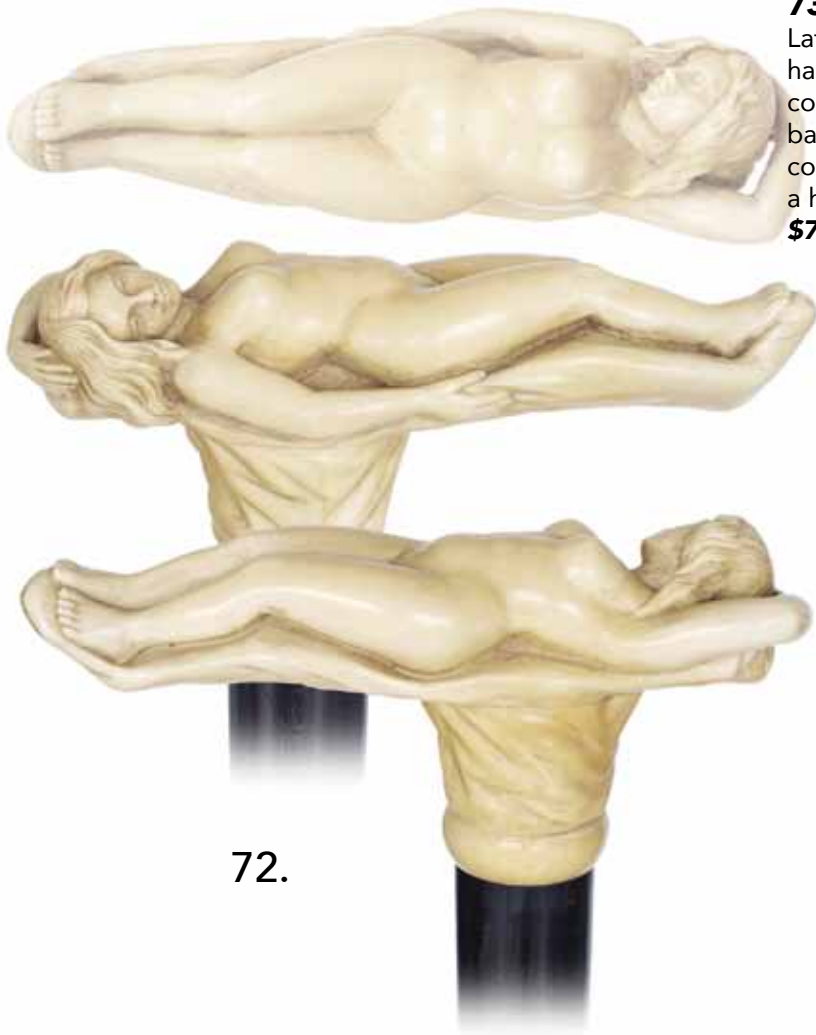
71.

71. Hardstone Brigg Duck Head Cane

Ca. 1880-Fashioned of a layered carnelian with natural red hues in the classic shape with a long beak, well figured feather coat and two inset glass eyes, matching rosewood shaft with a fire gilt collar and a horn ferrule. This example of the Brigg duck head is of the finest of its kind. The type is illustrated in the companies catalog. H. 2 ½" x 1 ½", O.L. 35 ½"
\$1,400-\$1,800

72. Venus Ivory Dress Cane

Circa 1890-A substantial T-shaped ivory handle fashioned of select material and carved to depict a reclining Venus exhibiting her feminine pulchritude. The beauty, with a face combining to perfection sensuality and innocence, gives the impression to be calmly immersed in her dreams. Great artistry demonstrated here. Deep black ebony shaft and a stag horn ferrule. H. 5 ¼" x 2 ¼", O.L. 36 ½"
\$3,500-\$5,000



72.

73. Cloisonné Enamel Cane

Late 19th Century-Straight Shippo enamel handle with ball knob decorated in striking colors with chrysanthemums on a glittering background, ebony shaft with a scalloped silver collar engraved "GERTRUD SAHLI BERN" and a horn ferrule. H. 5 ¾" x 1", O.L. 37 ½"
\$700-\$900



73.

74. Figural Day Cane

Ca. 1920-Hippo ivory handle fashioned of a single piece in a Opera shape with raised scroll carvings on the hand rest and a female head at the front. Fine grained rosewood shaft, chased metal collar and a stag horn ferrule. The motif was probably inspired by the dancers of the Ballets Russes of Sergei Pawlowitch Daghliev. Superb carving. It was the property of George Balanchine and came in the hands of the consignor who acquired it in NY in the mid 1980's when the famous choreographer estate was dispersed at auction.

H. 4 $\frac{3}{4}$ " x 1 $\frac{3}{4}$ ", O.L. 36 $\frac{1}{2}$ "

\$3,000-\$4,000

74.



76.



75. One Piece Horn Cane

Ca. 1880-With an L-shaped handle fashioned as a streamlined whippet head with two colored glass eyes extending in a faux sprig shaft with a metal ferrule. The fibrous textured material, possibly Rhino Horn, aged well with a dark patina that formed part of the material itself.

H. 4 $\frac{1}{2}$ ", O.L. 35"

\$2,000-\$3,000

76. Erotic Cane

Ca. 1880-Substantial ivory handle "His" on the front and "Her" on the back, finely chased silver collar and a rosewood shaft with a stag horn ferrule. Well used cane with an age grown patina.

H. 4 $\frac{1}{4}$ " x 1 $\frac{1}{4}$ ", O.L. 38"

\$1,200-\$1,800

77.



77. Rhino Hide Cane

Ca. 1890-Finely engraved silver cap on a shaft made of one piece of dried and polished rhino hide and fitted with a brass ferrule. This cane is one of those rarely encountered Anglo-Colonial curiosities. H. 1" x $\frac{1}{2}$ ", O.L. 30 $\frac{1}{2}$ "

\$300-\$400

75.





78.

78. French Erotic Ivory Cane

Late 19th Century-An L-shaped carved ivory handle of a nude twin tailed siren exposing her pulchritude, real malacca shaft and an ivory ferrule. This is a fine example of French erotic micro carving. H. 5 x 3 1/4", O.L. 33"

\$3,000-\$4,000

79. Ebony and Ivory Figural Cane

Ca. 1890-Ebony and ivory knob with the face of a man against the one of a woman, well chased silver collar, ebony shaft and a horn ferrule. Delicate carving in the traditional Beaux Arts materials and possibly French. H. 3" x 2", O.L. 37 1/2"

\$800-\$1,200

80. Top Rate Marine Cane

Ca. 1840-1850-Substantial whale tooth knob well carved as a fist with a frilled cuff and a coiled snake with a large head and forked tongue, malacca shaft with eyelets and a 3 1/2" brass and iron ferrule. Marine Art at its best. The theme of the hand has been often the subject of many experts and is generally taken for a Free Mason's attribute.

H. 3 1/2" x 2", O.L. 36 3/4"

\$3,000-\$4,000

80.



79.



81. Stingray Tail Cane

19th Century-Fashioned of the tail of a giant Dasyatis Sephen Stingray tail with a dark greenish needle-harsh cutting surface and an impressive 6 1/2" tall barbed venom darts. Substantial silver knob fitted with a metal ferrule.

H. 3 1/2" x 2", O.L. 39"

\$1,800-\$2,500

82. Marine Cane

19th Century-Sperm whale tooth handle carved with an oval whale panel on the top and two different whales on the side. Hardwood shaft carved with a twist bringing to mind a spiraling narwhal tusk, white metal collar and ferrule.

H. 5 1/2" x 2", O.L. 33 3/4"

\$1,500-\$2,000

83. Marine Cane

Mid. 19th Century-Walrus ivory pistol shaped handle on a substantial, one piece baleen shaft with a metal ferrule. This cane is representative for the golden age of whaling and beautifully emphasized by a one and half century old patina.

H. 3 1/2" x 1 1/2", O.L. 33 3/4"

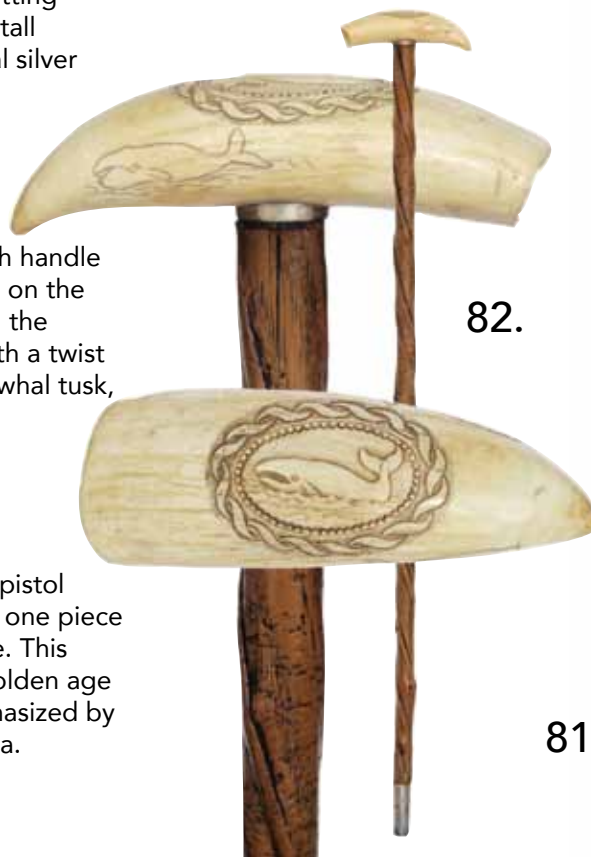
\$1,000-\$1,500

84. Ivory Octopus Cane

Ca. 1890-L-shaped ivory handle carved with a multiple legs sea mollusk, fruitwood shaft with a gilt collar and a brass ferrule.

H. 4 1/4" x 1 3/4", O.L. 33 1/4"

\$500-\$800



85.



86.



85. Marine Vertebrae Cane

Ca. 1900-A superior specimen of the classic shark vertebrae cane with an ivory fist handle and dark and blond tortoiseshell washers and an ivory ferrule. Anglo-Colonial and perfectly preserved. H. 2 1/2" x 2", 35"
\$800-\$1,200

86. Erotic Nude Cane

Ca. 1895-A large ivory Art Nouveau handle finely carved to depict a Venus, ebony shaft with a hand chased silver collar with hallmarks and a metal ferrule. This is a world class cane. H. 3 1/2" x 2 1/2", O.L. 37"
\$1,800-\$2,500

87. Ivory Dachshund and Vine Cane

19th Century.-Bizarre grown wild vine with a dramatic natural structure embellished with a lovely ivory dachshund applied to in two parts to give the impression that its body goes through the shaft, metal ferrule. The natural bulb knob of the shaft suggests the shape of a bone. H. 2 1/2" x 2", O.L. 37 1/2"
\$800-\$1,200

87.



88. Ivory Young Girl Cane

Ca. 1885-A well carved girl's head in bonnet, turned ivory collar, makassar ebony shaft and a metal ferrule. French. H. 2" x 1 1/2", O.L. 34 1/2"
\$600-\$700

88.



89. Rooster Cane

20th Century-Striking and large fruitwood rooster head handle with glass eyes, golden ash branch shaft with a silver collar with Birmingham hallmarks and a metal ferrule.

H. 3 ½" x 3 ¼", O.L. 39 ¾"

\$600-\$800



90. Ivory Satirical Cane

London Hallmarks 1888-Large ivory humanized monkey, rosewood shaft with a silver collar and stag horn ferrule. Huge handle. O.L. 36 ¾"

\$1,000-\$1,500



91. Tropical Wood Figural Handle

Ca. 1920-Very large greenish tropical wood handle, the wild animal, possibly a tiger has inset glass eyes, ebony shaft with a brass ferrule and silver collar with Birmingham hallmarks.

H. 4 ¾" x 2 ½", O.L. 37 ½"

\$700-\$900



92. Whimsical Rabbit Cane

Late 19th Century-A whimsical ivory cane of a rabbit in rural dress looking into an open book. The rodent with dark glass eyes is fashioned in the manner of a Beatrix Potter character. Ebony shaft with a finely chased silver collar with London hallmarks 1897 and a brass ferrule. H. 3 ¼" x 1 ¾", O.L. 36 ¾"

\$1,200-\$1,600



93. Dog Head Day Cane

19th Century-Well modeled cast and nickel plated Britannia dog portrait cane on a select malacca shaft with a horn ferrule.

H. 2 ¾" x 2 ½", O.L. 34 ¼"

\$300-\$400





94.



97.



96.



95.



94. Duck Head Cane

London hallmarks 1894-Well modeled bronze handle of the celebrated Brigg duck head, fine grained rosewood shaft, silver collar and a horn ferrule. The type is illustrated in the reputed London Company's catalog of the time.
H. 3" x 1 3/4", O.L. 38 1/2"

\$500-\$800

95. Ivory Dog Head

Ca. 1900-Large and long eared ivory dog head with glass eyes and hat, wide and finely engraved silver collar and an ebony shaft with a worn out ferrule.
H. 2 1/2" x 2 1/2", O.L. 33 3/4"

\$900-\$1,200

96. Dog Head Day Cane

Ca. 1900-Large ebony long eared dog head with inset glass eyes, ebony shaft with a finely chased silver collar and a brass ferrule.
H. 3 1/4" x 3", O.L. 35"

\$500-\$700

97. Figural Day Cane

Ca. 1880-Hippo ivory handle carved with a fox, silver collar with Birmingham hallmarks, ebony shaft and an ivory ferrule.
H. 3 3/4" x 1 1/2", O.L. 35"

\$1,000-\$1,500

98. Automated Cane

Ca. 1880-Automated boxwood knob carved to depict the head of a Caucasian man with a bearded face and kalpack, pepper bamboo shaft with a white metal collar and brass ferrule. Attractive and so-far unrecorded cane with loose mechanics and in need for serious attention. H. 2 1/4" x 2", O.L. 35 1/2"

\$600-\$800

98.

**99. Anglo-Colonial
Souvenir Cane**

Dated January 1st,
1896-Substantial ivory handle
carved on the top and in high
relief "Souvenir Mayumba
J.W.C.Africa January 1st,
1896", malacca shaft with a
white metal collar and a metal
ferrule.
H. 4 ½" x 1 ½", O.L. 35 ½"
\$700-\$1,000

99.



100. Ivory Lion Cane

Ca. 1890-Large ivory lion
carved seated in the heraldic
style with a slightly side wards
turned head with a powerful
stare, gorgeous mane and a
raised front paw. Ebony shaft
with a white metal collar and a
stag horn ferrule. Near mint.
H. 4 ¾" x 2", O.L. 40 ½"
\$2,000-\$3,000

100.



**101. Ebony and Ivory
Figural Handle**

Ca. 1900-Large and imposing
ebony prone leopard with
inset ivory teeth and glass
eyes, ebony shaft with a horn
ferrule and finely chased silver
collar. H. 5" x 3", O.L. 37"
\$700-\$900

101.



**102. Knobkerrie Ivory
and Silver Dress Cane**

Ca. 1900-Stylish handle
fashioned of the tip of an
elephant tusk flush set in
a plain silver knob, ebony
shaft and a stag horn ferrule.
Distinguished by a strong
profile this cane is also a
redoubtable disguised life
preserver weapon.
H. 5 ½" x 2 ½", O.L. 37"
\$700-\$900

102.



103.



105.



104.

103. Folk Art Hand Cane

19th Century-Fruitwood upright hand with a ball and an integral and wide buttoned cuff with large initials "O.W." on a faux sprig shaft without ferrule. Well used and with an ennobling great feel of age. H. 4 3/4" x 1 1/2", O.L. 33"

\$500-\$700

104. Amos and Andy Ivory Broadcasting Cane

Ca. 1930-Art Deco figural ivory knob carved with Amos and Andy in suits, nice presentation of the world famous early radio comedians. Rosewood shaft and a metal ferrule. H. 3 1 1/2", O.L. 34 3/4" **\$1,000-\$2,000**

105. Inkpot, Pen, Pencil and Stanhope Gadget Cane

Ca. 1900-The fruitwood cane unscrews in three parts and has a corked inkpot under the knob with an obscured Stanhope, a pencil attached to the first part and a nib to the second one and has a metal ferrule. Referred to as a Notary Cane. H. 1", O.L. 33

\$400-\$500

106. Sword and Knobkerrie Cane

Ca. 1880-Heavy brass ribbed knob on a bamboo shaft with a white metal ferrule. In the shaft there is a 25 1/2" long triangular steel blade with one edge. Beside its redoubtable built in sword, this cane is also a disguised life preserver weapon.

H. 5 3/4" x 2", O.L. 35 1/2"

\$400-\$500

106.



107. Stanhope Cane

Ca. 1900-Braided leather Turk's knot knob on a straight rosewood stem fitted with a Stanhope picture of the "Main Falls", ebony shaft and an ivory ferrule. H. 3 1/4" x 1", O.L. 34"
\$300-\$400

108. American Wild West Cane

19th Century-Ebony and ivory handle inspired by a revolver grip, hardwood shaft with a metal collar and missing ferrule. H. 5 1/4" x 3 3/4", O.L. 37 3/4"
\$400-\$600

109. Makhilla Cane

French, Basque Region-Woven leather handle with horn knob and brass collar, swiveling hanger and braided loop, scarred branch shaft with long brass ferrule and cross shaped steel tip. The handle unscrews to reveal a redoubtable steel spike. Basque inscriptions to the handle. H. 8 1/4" x 2", O.L. 34 1/4"
\$400-\$600

110. Hardstone Dress Cane

Ca. 1920-Large and elaborately faceted Milord rock crystal knob, well streaked rosewood shaft with a grooved silver collar and a horn ferrule. The style speaks for a possible French origin. H. 2 1/2" x 1 3/4", O.L. 38"
\$300-\$500

111. Dual System Tripod Cane

Ca. 1920-Light wood cane with a plain crook handle and metal ferrule, fitted with a nickel plated metal bayonet lock that easily unfolds to access the light metal tripod with two concealed in the shaft. "PATENT a. STOCKSTATIV H.M. CORP. TRIPOCANE MADE IN GERMANY". H. 5" x 4 3/4", O.L. 37"
\$400-\$600

109.



107.



108.

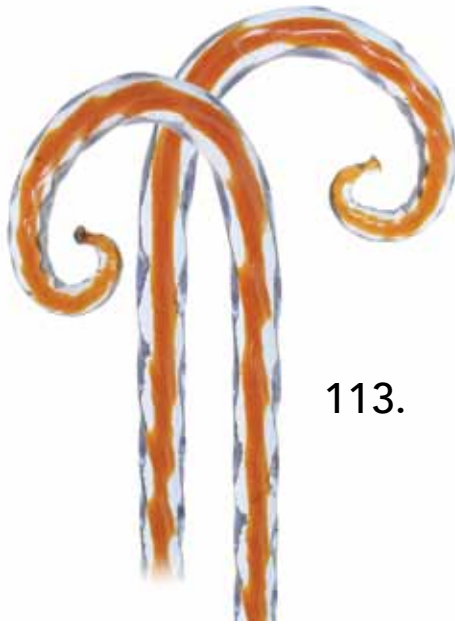


110.



111.





113.



112.

112. Glass Cane

Ca. 1900-Better single piece transparent glass cane with white and tight twisted latticino bands and an integral handle formed as a narrow Scottish shepherd crook with raised nose. English.

H. 5 1/22 x 2 3/4", O.L. 43 3/4"

\$300-\$400

113. Glass Cane

Ca. 1900-Better single piece transparent glass cane with an orange core, a regular twist over its entire length and an integral crook handle recalling the curve of a bishop staff from the Middle Ages. Most likely English and intact. H. 4 1/4" x 3 1/4", OL. 37 1/2"

\$300-\$400



116.



114.

114. Glass Cane

Ca. 1900-Single piece Royal blue glass cane with a narrow twist and an integral L-shaped handle with a dropping and coiled nose. Most likely English with a superb and rarely encountered color and intact. H. 3 3/4" x 3", OL. 41"

\$300-\$400

115. Glass Cane

Ca. 1900-Single piece glass cane with a wide twist enhancing the beautiful and limpid aquamarine color and an integral handle formed as a wider Scottish shepherd crook handle with a tightly curled nose. Most likely English and intact.

H. 4" x 3 1/2", OL. 44"

\$300-\$400



115.

116. Ivory Rabbit day Cane

Ca. 1890-Well carved ivory hopping rabbit handle on a long and plain turned ivory stem, ebony shaft with a silver collar and a horn ferrule. The rodent is naturalistically rendered with a furry coat and backwards stretched long ears and two inset dark glass eyes. H. 5" x 2 3/4", O.L. 38 1/2"

\$900-\$1,200

117. Silver Bear Hunt Cane

19th Century-Silver knob with a dog fighting two bears, ebonized hardwood shaft and a metal ferrule. Intricate composition in the German taste of the 18th Century with a well rubbed surface and unidentified hallmark.

H. 3" x 1 1/2", O.L. 36 3/4"

\$600-\$800

118. Ivory Dog Heads Cane

Ca. 1900-Straight ivory handle topped by four dog heads of different breeds, Rosewood shaft with a horn ferrule and a plain silver collar with Birmingham hallmarks.

H. 4 1/4" x 2", O.L. 36 1/2"

\$1,200-\$1,800

119. Dog Day Cane

Ca. 1920-L-shaped stag horn handle carved with the head of sleeping dog at the front and embellished with an applied black horn washer at the back. Rosewood shaft with a horn ferrule and a silver collar engraved "Let sleeping dogs lie".

H. 5 1/2" x 2 1/4", O.L. 37

\$500-\$600

120. Figural Day Cane

Ca. 1900-Large and curving Lignum Vitae handle carved to depict a predatory bird's head with a snake in its mighty beak, well figured feather coat and inset glass eyes, rosewood shaft with a silver collar struck with Birmingham hallmarks and a metal ferrule.

H. 5" x 3 1/4", O.L. 37 1/4"

\$400-\$500

121. Historic Ivory Cane

Ca. 1880-Ivory knob with four Indian lions standing back carved after the Lion capital of the Asoka pillar at Sarnath, malacca shaft with ivory eyelets and a stag horn ferrule. Decorative cane and loaded with symolics.

H. 3 1/2" x 1 1/2", O.L. 39"

\$800-\$1,000





123.



125.

126.



122.

124.



122. Tiger Eye Dress Cane

19th Century-The balls handle with brown-gold petrified wood structure, rosewood shaft with a gilt collar and a horn ferrule. French. H. 1 3/4" x 1 3/4", O.L. 38 3/4" **\$400-\$500**

123. Asian Ivory Dress Cane

Ca. 1890-Carved ivory monkey and owl on a rock in the traditional Meiji-Japanese accurate detail, ebony shaft with a stag horn ferrule. H. 4 1/4" x 1 1/4", O.L. 37" **\$800-\$1,200**

124. Bamboo Snakes Cane

19th Century-Larger bamboo cane with natural root as knob, shaved and finely carved in low relief with three intertwined snakes, metal ferrule. Top rate Japanese quality with micro fine detail and color highlights and signed by the artist. H. 3 x 1 3/4", O.L. 36" **\$300-\$400**

125. Asian Stag horn Day Cane

Ca. 1890-Staghorn handle turned in a stretching pommel shape and carved in low relief with a scene from the Far Eastern mythology showing a warrior fighting a monster. Ebony shaft and a stag horn ferrule. **\$600-\$900**

126. Bamboo Japanese Cane

19th Century-Larger bamboo cane with natural root as knob, shaved and finely carved in low relief with a coiled snake peering at the portrait of a beauty snakes, metal ferrule. Vertical splits to the shaft which could disappear with the right moisture. H. 3 x 1 3/4", O.L. 36 1/4" **\$300-\$400**

127. Figural Ivory Day Cane

19th Century-Large ivory handle carved to depict a wild animal with a prey in its mouth, ebony shaft with a wide ivory collar and a tall ivory ferrule. H. 3 ¾" x 1 ½", O.L. 37 ¼"
\$800-\$1,000

128. Bamboo Nature Life Cane

19th Century-Bamboo cane with natural root as knob and a metal ferrule. Superb Japanese quality with micro detail and signed by the artist. H. 3 x 1 ¼", O.L. 35 ½"
\$200-\$300

129. Jewelry Dress Cane

Ca. 1880-Indian Agate Milord knob in an engine turned silver and enamel Louis XVI setting, snakewood shaft, the king of all woods, and a metal ferrule. Several Viennese hallmarks beside a "950" for Sterling and a "G.A.S." maker's stamp for the celebrated Georg Adam Scheid, one of the most recognized silversmiths and enamellers worldwide. H. 2 ¾" x 1", O.L. 38 ¾"
\$800-\$1,000

130. Ivory Lion Cane

19th Century-Substantial ivory handle with a majestically resting male, malacca shaft with an ornate silver collar and a brass ferrule. Excellent portrait of the King of the Jungle. H. 4 ¾" x 2 ¼", O.L. 36 ½"
\$1,500-\$2,000

129.

128.



127.



130.





132.



131.

131. Silver Dress Cane

19th Century-Large Opera shaped handle ornate with a different composition of rich Baroque scrolls, shells and flowers on each side, ebony shaft and a horn ferrule. A full set of hallmarks on the handle's collar hints to the German origin.

H. 4 1/4" x 2 1/2", O.L. 34 3/4"

\$400-\$500

132. Ivory Skull Cane

Ca. 1890-Well carved ivory human skull knob on an ebony and ivory washer plinth, ebony shaft and a horn ferrule. This cane oozes a scary vibrancy and macabre touch and probably served as both as a warning symbol and an object for meditation. English.

H. 3 1/4" x 2 1/4", O.L. 36 3/4"

\$1,000-\$1,500

133. Mascot Day Cane

Ca. 1900-Boxwood knob carved with two chubby Wise Men faces against one another, fine grained lemonwood shaft with a horn ferrule and gilt metal collar. Japanese export, Meiji period.

H. 1 1/4" x 1 1/4", O.L. 36 1/4"

\$200-\$300

134. Ivory Rabbit Cane

Ca. 1890-The handle is fashioned of one piece of fine grained and bright material and carved to depict a running hare against an oak branch with oak leaves, ebony shaft and a brass ferrule. Very fine and ergonomic.

H. 3 1/4" x 3 1/4", O.L. 37 1/4"

\$900-\$1,200



133.



134.

135. Portrait Day Cane

19th Century-Elongated rosewood knob with a cartooned man's head, inset glass eyes, ebony shaft and a metal ferrule and a twin folded silver collar with Birmingham hallmarks. First rate whimsical English cane. H. 2 3/4" x 2", O.L. 37"

\$600-\$800

136. Ivory Turf Cane

19th Century-L-shaped horse leg and hoof ivory handle, silver collar with shield within well chased scrolls, rosewood shaft and a stag horn ferrule. Luck bringer cane and with the merits of a well-used patina. H. 3 1/2" x 1 1/4", O.L. 35 3/4"

\$600-\$800

137. Oriental Parade Cane

20th Century-Ebony cane with an ebony ball knob lavishly embellished with mother of pearl inlay and what seems to be turquoise veneer in various diamond patterns, gilt brass collars and ferrule.

H. 5" x 1 3/4", O.L. 37 1/2"

\$500-\$700

138. Novelty Toad Cane

Ca. 1920-Ivory and hardwood humanized toad head with glass eyes wearing a kepi and a skirt with a bowtie, rosewood shaft with a grooved silver collar and a horn ferrule. 2 1/2" x 2 1/2", O.L. 37"

\$800-\$1,000

137.



135.



138.

136.





141.

139. Tula Silver Dress Cane

Ca. 1920-Well-proportioned L-shaped silver handle with Art Deco Tula silver decoration, dark and well figured rosewood shaft with a horn ferrule. German hallmarks. H. 4" x 3 1/4", O.L. 36" **\$300-\$400**

139.



140.

140. Duck Day Cane

Ca. 1920-A well carved and naturalistically colored hardwood duck head with inset glass eyes, ebony shaft, gilt metal collar and a metal ferrule. Decorative and quality cane. H. 3 3/4" x 2 1/2", O.L. 36 1/2" **\$300-\$400**

141. Ivory Dachshund Cane

19th Century-Ivory Sunday golfer with a dachshund front part on one side and his back part on the other to give the impression that the canine goes through the handle. Ebony shaft with an ivory-ferrule. H. 3 1/4" x 1 3/4", O.L. 35 3/4" **\$500-\$700**

142. Silver Dress Cane

Ca. 1890-Large Derby silver handle hand chased and engraved in the Baroque with rich and different Baroque scrolls on each side. German hallmarks. H. 4 1/2" x 2 3/4", O.L. 36 3/4" **\$300-\$400**



142.



143.

143. Rabbit Dandy Cane

Ca. 1900-Boxwood rabbit head with upright ears and glass eyes handle, ebony shaft with a plain silver collar and a metal ferrule. Mascot cane and with an appealing, whimsical touch. H. 3 1/2" x 2", O.L. 37 1/4" **\$300-\$400**

144. Ivory Dog Cane

19th Century-An ivory carved dog head with long muzzle, cut ears and inset glass eyes, stepped malacca shaft with a grooved silver collar and a metal ferrule.

H. 2 1/4" x 1 1/4", O.L. 33 1/2"

\$400-\$500



144.

145. Dog Day Cane

Ca. 1900-L-shaped boxwood handle with a long eared dog head with inset glass eyes, light colored rosewood shaft with a silver collar and a horn ferrule. Decorative and quality cane.

H. 4 1/4" x 4", O.L. 36 1/2"

\$300-\$400



145.

146. Hardstone Dress Cane

Ca. 1910-Straight and tapering rock crystal knob with a fascinating natural structure, ebony shaft with a silver collar and a horn ferrule. Superb quality. H. 2 1/2" x 1", O.L. 36 1/4"

\$400-\$500



146.

147. Silver Dress Cane

Ca. 1890-Sizeable L-shaped silver handle decorated with two applied bands of flowers and leave. Fine grained rosewood shaft and a horn ferrule. German hallmarks.

H. 4 in. x 2 in., O.L. 36 1/2 in.

\$300-\$400



147.

148. Stag horn Hunting Cane

Ca. 1890-Straight stag horn handle carved with a running stag, malacca shaft with brass collar and a metal ferrule. Well used, rich patina.

H. 5 1/2" x 1 1/2", O.L. 33 1/2"

\$500-\$600



148.

150.



149.



149. Hardstone Dress Cane

Ca. 1920-Sardonyx ball knob with a fascinating, natural black and white layered structure, rosewood shaft with an Art Nouveau silver collar and a horn ferrule. Superb quality. H. 1 ½" x 1 ½", O.L. 38"
\$400-\$700

150. Ivory Dog Head Cane

Ca. 1890-Ivory knob carved to depict a long eared dog head with inset glass eyes, dark rosewood shaft with a plain silver collar and horn ferrule. H. 2 ¾" x 1 ¾", O.L. 36 ½"
\$700-\$900

151.



151. Feminine Art Nouveau Silver Dress Cane

Ca. 1900-L-Shaped silver handle decorated in the prevalent curving, linear taste of the day, snakewood shaft and a matching, long horn ferrule. The silver hallmarks attest for a European origin. H. 3 ½" x 3", O.L. 33 ¼"
\$300-\$400

152. Duck Day Cane

Ca. 1920-A fruitwood duck head with inset glass eyes, dark rosewood shaft with a silver collar and a metal ferrule. H. 4" x 2 ¼", O.L. 36 ¼"
\$300-\$400

152.



153.



153. Art Nouveau Dress Cane

Ca. 1900-Large and well-proportioned Silver Opera handle, rosewood shaft and a horn ferrule. Beautiful decoration, engraved initials "C.R." and a full set of German hallmarks. H. 4 ¼" x 2 ½", O.L. 35 ½"
\$300-\$400

154. Agate Dress Cane

Early 20th Century-The polished Milord handle of a natural gray color and subtle foggy structure, ebony shaft with a plain silver collar and a horn ferrule.

H. 2 ½" x 1", O.L. 37 ½"

\$300-\$400

155. Art Nouveau Silver Dress Cane

Ca. 1910-Silver knob with a chrysanthemum and two dragon flies on the side and a crown of flowers on the top, ebony shaft and a replaced metal ferrule. French.

H. 2 ¼" x 1 ½", O.L. 36 ½"

\$200-\$300

156. Figural Day Cane

Ca. 1920-Fashioned of a well-dressed wild cherry branch with a natural bough carved as, what seems to be a beaver head and fitted with a metal ferrule. The head is embellished with paint, glass eyes and a flush set dark horn collar.

H. 2 ½" x 2", O.L. 36 ½"

\$300-\$400

157. Feminine Dress Cane

Ca. 1890-Small silver crutch handle with a pointed nose and hand chased Baroque scrolls, coco palm wood shaft with a brass ferrule. The 800 and half moon with crown silver hallmarks attest to the German origin. H. 2 ¾" x 2 ¼", O.L. 36"

\$300-\$400

158. Parrot Head Dress Cane

19th Century-Well carved hardwood parrot head with glass eyes and remaining color highlights, grooved silver collar, dark rosewood shaft and a horn ferrule.

H. 4" x 2 ¼", O.L. 36 ½"

\$300-\$400

155.

156.

154.

158.

157.



159.



159. Knobkerrie Cane

Ca. 1900-Heavy white metal silver handle modeled with scrolls and dots and a Heracles head at the front. Lignum Vitae faux sprig shaft with metal eyelets and a metal ferrule.

H. 3 3/4" x 2 1/2", O.L. 32 1/4"

\$300-\$400

161.



160. Duck Day Cane

Ca. 1920-A boxwood stylized duck head with inset glass eyes, plain silver collar with Birmingham hallmarks and a rosewood shaft with a metal ferrule.

Stylish. H. 4" x 2", O.L. 35 3/4"

\$200-\$300

161. Silver Dress Cane

Ca. 1880-L-shaped silver handle hand chased and engraved with flowers and shells among rich Baroque scrolls, well-figured rosewood shaft and a horn ferrule. High-end Viennese cane and well conserved.

H. 4" x 2 3/4", O.L. 35 3/4"

\$300-\$400

162.



162. Hard Stone Dress Cane

Ca. 1900-A sizeable Indian agate stone knob of a grey color with natural greenish, seaweed like veins, fashioned in a plain and tapering, elongated Milord shape, cocobolo shaft with an Art Nouveau silver collar and a horn ferrule. Luxurious.

H. 3" x 1 1/4", O.L. 39 1/2"

\$400-\$600

163.



163. Silver Dress Cane

London hallmarks 1895-Opera shaped silver handle with a long stem totally hand chased and engraved with dense scrolls, ebony shaft and a brass ferrule. Extremely decorative, mint and original condition.

H. 8 x 2 1/4", O.L. 37 3/4"

\$200-\$300

160.



164. Dog Head Day Cane

Ca. 1920-Hardwood dog head knob with a well figured hairy coat and inset glass eyes, wild cherry branch with a horn ferrule and a plain silver collar with Birmingham hallmarks.

H. 2 1/2" x 2 1/4", O.L. 38 1/4"

\$200-\$400

165. Individual Material Cane

19th Century-Substantial stag horn handle and its silver plated collar on a cork oak branch shaft with a metal ferrule.

H. 7 1/4" x 3", O.L. 35 1/4"

\$500-\$700

166. Paper Washer Cane

Ca. 1890-Entirely made of paper washers tightly stacked on a steel core with an integral knob and brass ferrule.

H. 2 1/2" x 2", O.L. 36 1/2"

\$300-\$400

167. Dual Purpose Leather Washer Cane

19th Century-Flat pistol shaped horn handle with a notch on a stacked leather washer shaft with a steel ferrule. The notch probably accommodated at a certain time a steel blade and made of the cane a redoubtable hatchet. Well aged, dark surface.

H. 3 1/2" x 2 3/4", O.L. 37"

\$300-\$400

168. Art Deco Glass Cane

Ca. 1920-A satin glass clown playing a banjo which has been attached to a silver handle, back of the clown acts as a thumb rest, hardwood shaft and a metal ferrule, probably a custom piece of the period. H. 5" x 2 1/4", O.L. 36"

\$1,000-\$1,500



164.



167.

166.



165.



168.





169.



170.

172.



169. Ivory Dress Cane

Ca. 1880-An L shaped ivory handle with an ornate silver end cap and matching collar, exotic wood shaft and a metal ferrule.

H. 4 1/2" x 1 1/4", O.L. 35"

\$300-\$400

170. Gold-filled Dress Cane

Ca. 1895-A formal dress cane with ornate work throughout, very fine condition, hardwood shaft and a metal ferrule.

H. 4" x 1 7/8", O.L. 35 1/2"

\$300-\$500

171. Sword Dress Cane

Early 20th Century-An ornate silver metal hallmarked handle, 20" 6-sided pike blade with screwing mechanism, oak shaft and an ebony ferrule.

H. 3 1/2" x 2", O.L. 38"

\$350-\$500

172. Piccolo System Cane

Ca. 1925-Ornate silver handle, 8 holed instrument with 5 keys, shaft separates into 5 sections, ebony shaft and a long ferrule. O.L. 36"

\$600-\$900



173.



171.



173. Toledo Sword Cane

Early 20th Century-A hallmarked coin silver crook handle which is attached to a 24 1/2" signed Toledo upper engraved two sided blade, handle is tightly fitted to the exotic wood shaft and a worn wood ferrule.

H. 4 1/4" x 5", O.L. 37"

\$500-\$800

174. Horn Sword Cane

Late 19th Century-A large carved horn handle with a push button mechanism and an 11 1/2" 4-sided blade, nautical woven rope collar, thick malacca shaft and a horn ferrule. H. 4" x 5", O.L. 36"

\$700-\$1,000

175. Shot Gun System Cane

Ca. 1875-A nice example with a wood handle, working twist and lock mechanism, probably a 410 cal., sights on both ends of barrel and no ferrule.

H. 3 3/4" x 1 1/2", O.L. 34 1/2"

\$900-\$1,200

176. Ivory Sword Cane

Ca. 1900-Carved ivory exotic animal, lock and pull mechanism with a 20 1/2" blade, in working condition, horn and ivory collars, bamboo shaft and an ivory ferrule. H. 4 1/4" x 2", O.L. 36"

\$600-\$900

177. Horn Dress Cane

Ca. 1925-A segmented horn shaft and a horn handle with a metal ferrule. H. 2" x 1 1/4", O.L. 34"

\$200-\$300

178. Hardwood Dress Cane

Ca. 1930-A carved hardwood ball, signed sterling collar, stacked disc flexible shaft and a pike ferrule. H. 1 3/4" x 2", O.L. 36"

\$150-\$250



176.



175.



174.



177.



178.





179.

179. Collection of Glass Knob Canes

20th Century-A group of three mint glass sphere canes with ornate collars, ebony shafts and metal ferrules, largest sphere is 1 3/4" x 1 3/4", average length is 36"

\$500-\$1,000

182.

180. Stag Hound Cane

Ca. 1925-A carved hound, ornate brass collar, bine shaft and a metal ferrule.

H. 2 1/2" x 6", O.L. 35"

\$250-\$350



180.

181. Group of Four Various Canes

Various Dates and Various Materials

\$500-\$1,000

182. Ivory Dress Cane

Ca. 1900-An ivory dress cane with a wood disc atop, horn and ivory spacers, mahogany shaft and a bone ferrule.

H. 3" x 1 1/2", O.L. 34 1/2"

\$200-\$300



183. Hardstone Dress Cane

Ca. 1935-An unusual brown agate, signed sterling collar, blonde hardwood shaft and a horn ferrule.

H. 1 3/4" x 1 3/4", O.L. 36"

\$200-\$250



183.



181.

184. Two Marquetry and One Turnbridge Cane

Early 20th Century-Average length 36"

\$200-\$400

184.



185. Pearl and Silver Dress Cane

Ca. 1900-A pearl silver overlaid handle, signed sterling collar, briarwood shaft and a metal ferrule-H. 4" x 1 3/4", O.L. 35"

\$300-\$500

185.



186. Silver and Enamel Dress Cane

Late 19th Century-An East Asian/British Colonial cane, demon heads on sides and top, mahogany shaft and a metal ferrule. H. 2 3/4" x 1 1/2", O.L. 31 1/4"

\$300-\$500

187.

187. Silver Overlaid Dress Cane

Ca. 1900-A silver over metal cast handle, ebony shaft and a metal ferrule. H. 2" x 1 3/8", O.L. 34 3/4"

\$200-\$300



188. Russian Cloisonné Dress Cane

Early 20th Century-Fine enamel work throughout the handle with the Russian .84 mark, snakewood shaft and a metal ferrule. H. 5" x 2 1/4", O.L. 34"

\$800-\$1,200

188.



186.





190.



189.

191.



192.

191.

189. Carved Bone/Snake Folk Cane

Ca. 1840-An unusual carving with an abalone disc atop, split metal collar, carved snake and twig shaft with a metal ferrule.

H. 1 1/2" x 1 1/2", O.L. 34 1/2"

\$400-\$500

190. Shagreen/Ivory Dress Cane

Ca. 1925-A nice shark skin cover with ivory end caps, ivory type collar, exotic wood shaft and a metal ferrule.

H. 3" x 2 1/2", O.L. 33"

\$500-\$700

191. Ivory and Gold Dress Cane

Dated 1837-A nice early example with a gold disc atop, two silver collars, one with the name T. R. Bakewell and the other with a Latin verse, coin silver eyelets, stepped cherry shaft and a 4" iron ferrule.

H. 2" x 1 1/2", O.L. 35 1/2"

\$500-\$700

192. Black Forest Bear Cane

Ca. 1925-A nice bear carving with glass eyes, horn ring collar, cherry shaft and a metal ferrule.

H. 3" x 3", O.L. 34 1/2"

\$300-\$400

193. Native American Cane

Ca. 1930-A simple antler handle, woven collar, probably horse hair as is the shaft, some minor damage and a metal ferrule.

H. 2" x 6", O.L. 34"

\$300-\$500

194. Pair of 1933 Chicago World's Fair Canes

Nice condition, average length 36"

\$300-\$400

195. Silver Inlaid Dress Cane

Ca. 1890-An unusual inlaid handle with a monogram, leaf and string inlay in the upper rosewood shaft and a metal ferrule. O.L. 35 1/2"

\$300-\$500

196. Japanese Foil Dress Cane

Ca. 1890-A nice bright colored Japanese handle with flowers, some foil work missing where the handle meets the oak shaft and a splayed brass ferrule.

H. 1 1/2" x 5 1/2", O.L. 33"

\$300-\$500

197. Coquilla Nut Dress Cane

Ca. 1720-A nice early German cane with an ivory disc atop, crenellated brass collar (3 missing), sunburst eyelets, thick malacca shaft and a worn brass ferrule. H. 1 1/2" x 2", O.L. 36"

\$400-\$600



194.



193.



197.



196.



195.



198.

198. Four Silver Dress Canes

Ass. Dates and Assorted sizes.
\$200-\$400

199. A Pair of Early American Stag Canes

Ca. 1810-A wonderful pair of early American canes with coin silver eyelets, thick malacca shafts and 4" and 5" ferrules.
\$400-\$600

200. Cat in the Hat Cane

Ca. 1920-An unusual carved cat from a stag horn, bamboo shaft and a stag ferrule.
H. 5" x 1", O.L. 33 1/2"
\$300-\$500



201.

200.

199.

201. Going Ashore Cane

Ca. 1860-A nice ivory knob, leather collar, coin silver eyelets, nice malacca shaft and a 6 1/2" brass ferrule.
H. 1 1/2" x 2", O.L. 35"
\$300-\$500

202. Ivory and Silver Dress Cane

Ca. 1820-An ivory handle with a coin silver medallion atop, coin silver collar, malacca shaft and a 3 1/2" metal ferrule.
H. 1 3/4" x 1 3/8", O.L. 33 1/4"
\$300-\$500

202.



203. Ivory Dress Cane

Ca. 1790-Nicely aged ivory handle
brass eyelets, malacca shaft and a 3
¼" brass ferrule.

H. 3" x 1", O.L. 37 ½"

\$300-\$500



203.

204. Blanc de Chine Dress Cane

Late 19th Century-A fine German
porcelain handle in nice condition,
malacca shaft and a metal ferrule.

H. 4 ½" x 3 ¼", O.L. 37"

\$400-\$600



204.

205. Gutta Percha Dress Cane

Ca. 1875-A mythological figure
handle, ebony shaft and a 4" iron
ferrule. H. 2 ¼" x 2 ½", O.L. 33 ½"-

\$350-\$550



205.

206. Pair of Folk Art Canes

Ca. 1900-Both are one piece natural
branch canes with original finishes,
average length is 36"

\$300-\$500



206.

207. Ivory Ball Cane

Ca. 1850-A 2" round ivory knob,
rosewood shaft and a 3 ¼" brass
ferrule. O.L. 36"

\$350-\$550



207.

208. Bedouin Stag Cane

Ca. 1935-Carved nicely with two
color glass eyes, horn collar, oak
shaft and a copper ferrule.

H. 3" x 2", O.L. 31 ¾"

\$250-\$400



208.

211.



209.



209. A Pair of Early 19th Century Ivory Knob Canes

Silver eyelets and silver collars, largest handle is 1 1/2" x 2", malacca and oak shafts, one with a 4 1/2" ferrule. Average O.L. 36"
\$500-\$700

210. Civil War Gettysburg Cane

Dated 1863-A one piece natural branch which is signed "Culps Hill Gettysburg PA. July 1st 2nd 3rd 1863", no ferrule. O.L. 38"
\$150-\$350

211. Lion Folk Art Cane

Ca. 1920-A carved lion atop with various leafs and drums, various colors of shellac have been used on this cane and a brass ferrule. O.L. 33 1/2"
\$250-\$400

212. Bone and Ivory Dress Canes

Ca. 1890-Average length 36"
\$200-\$300

213. Three Carved and Fancy Folk Art Canes

Ca. 1910 to 1940-Average length 36"
\$300-\$500

210.



212.



213.



214. Lot of Four Children's Canes-18"-25"
\$300-\$500

215. Three Piece Cane Lot
\$200-\$500

216. Three Piece Cane Lot
\$200-\$500

217. Three Piece Cane Lot
\$200-\$500

218. Micmac Native American Canes

Ca. 1920-One has twin tendrils and the other has stylized foot prints on the shaft of a deer and a rabbit. Average Length 36"
\$200-\$400

219. Canes of the United States by Catherine Dike
\$100-\$300

220. Carved Wood Dog Cane

Ca. 1920-A carved wood handle, hallmarked British collar, hardwood shaft and a horn ferrule. H. 2" x 2 1/4", O.L. 35 1/2"
\$200-\$300



215.



217.

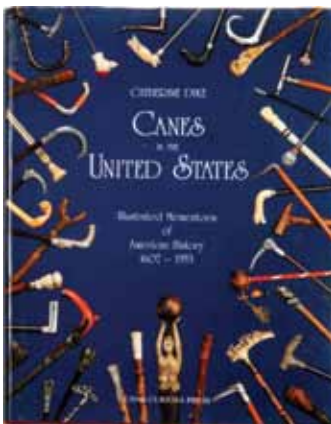


214.



216.

219.



218.



220.





221.



222.



224.



225.



223.

221. Shark Vertebrae Nautical Cane

Ca. 1885-A horn handle, a stacked vertebrae staff with a few horn spacers and a very unusual 3" horn ferrule with silver dot inlay.

H. 1 1/4" x 1 1/4", O.L. 34 1/2"

\$300-\$500

222. Silver Dress Cane

Ca. 1890-A signed sterling handle with various leaves and berries, exotic wood shaft and a metal ferrule.

H. 5" x 3 1/2", O.L. 35 1/2"

\$300-\$400

223. Gambler's System Cane

Ca. 1925-A wood compartment cane which holds two dice, exotic wood shaft and a horn ferrule.

H. 1 1/2", 2 1/2", O.L. 36" 1/2"

\$300-\$400

224. Fine Agate Dress Cane

Ca. 1930-A beautiful deep brown and white agate, very ornate silver collar with various plants and stands, rich snakewood shaft and a metal ferrule.

H. 2 1/2" x 1", O.L. 35"

\$300-\$500

225. Wood Parrot Cane

Ca. 1935-A one piece carved cane with two color glass eyes and a horn ferrule.

O.L. 36"

\$300-\$450

226. A Pair of Country Canes

Ca. 1900-One in stag the other horn, ornate silver collars, exotic wood shafts and metal ferrules.
H. 4" x 1 1/2", Average Length 35"
\$250-\$350



226.

227. Silver Dress Cane

Early 20th Century-An ornate hallmarked British handle with "The King's Own Scottish Border", thick malacca shaft and a metal ferrule.
H. 2" x 1 5/8", O.L. 36"
\$250-\$350



227.

228. Two Blackthorn Canes

Av. length 35"
\$150-\$200

229. Two Country Canes

Av. length 34"
\$100-\$200

230. Horn Hiking Stick

Ca. 1925-A nice example with a goat hoof collar, natural grown exotic shaft and an iron pike ferrule. H. 6" x 3", O.L. 35 1/2"
\$150-\$200



230.



229.



228.





231.

232.



231. Folk Art Snake Cane

Ca. 1930-A one piece carved oak branch with various leaves and a polychrome flower, no ferrule.

O.L. 33"

\$150-\$250

232. Folk Art Snake Cane

Ca. 1890-A one piece carved oak shaft with a full length snake, federal shield, and a brass ferrule. O.L. 33"

\$150-\$250

234.



233. Silver and Burl Country Cane

Dated 1893-A silver overlaid burl with one small piece missing, natural bark hardwood shaft and no ferrule.

H. 3 1/2" x 2 1/2", O.L. 32 1/2"

\$100-\$200

234. Nautical Bone Cane

Ca. 1880-A carved whale's tooth handle with some visible early repairs, but not annoying, baleen disc atop and spacers, ivory collar with baleen dots, 1 1/4" palm wood shaft and a brass ferrule. H. 4" x 2", O.L. 36"

\$500-\$600



233.



235.

235. Native American Beaded Cane

Ca. 1945-An unusual glass handle atop, one carved snake, center of shaft is bead work with minor bead work missing, lower carved shaft and a metal ferrule.

H. 1 1/4" x 1 1/2", O.L. 37 1/2"

\$300-\$500

236. Ivory Sword Cane

Ca. 1910-A carved ivory handle with various plants, 4 sided 22 1/2" blade, bamboo shaft and a metal ferrule.
H. 3 3/4" x 5/8", O.L. 37"
\$300-\$500

237. Nautical Whalebone Cane

Ca. 1865-Carved bone handle, ivory horn and baleen spacers, 5/8" whalebone shaft and a metal ferrule.
H. 2 1/2" x 1 1/4", O.L. 33 1/2"
\$500-\$700

238. Asian Silver Dress Cane

Ca. 1890-A silver metal handle with various animals and foliage cast, small silver metal collar, ebony shaft and a brass ferrule.
H. 6" x 1", O.L. 33 1/2"
\$200-\$300

239. Ivory Hunting Dog Cane

Ca. 1920-An ivory handle with two standing hounds, ornate silver collar with a flying angel, thick vine shaft and a metal ferrule.
H. 4 1/2" x 2", O.L. 33 1/4"
\$350-\$500

240. Horn Sword Cane

Ca. 1880-A finely carved horn handle with a silver cartouche, push button working mechanism with a 4 sided 27" bladed, hardwood shaft and a unique brass ferrule.
H. 3 3/4" x 5", O.L. 36 1/2"
\$600-\$800



237.



238.



239.



240.



236.





241.



243.

241. Ivory Dress Cane

Ca. 1890-A Japanese "thousand face" carving which is signed, malacca shaft and a horn ferrule.
H. 1 7/8" x 2", O.L. 36"
\$400-\$600

242. Ivory Dress Cane

Ca. 1885-A nice ivory knob, exotic wood collar, rich maple shaft and a horn ferrule.
H. 1 5/8" x 2 1/8", O.L. 34 1/2"
\$250-\$350

243. Art Deco Lucite Dog Cane

Ca. 1925-A well done Lucite dog with two color glass eyes, exotic wood upper collar, silver metal lower collar, exotic wood shaft and a brass ferrule.
H. 2" x 2", O.L. 35 1/2"
\$200-\$300

244. Ivory Horse Cane

Ca 1875-A well carved handle with both a horse and a dog holding the reins in its mouth, carved belt buckle collar, ebonized shaft and a metal ferrule.
H. 6 3/4" x 1 1/2", O.L. 37"
\$400-\$600

245. Gold-Filled Dress Cane

Dated 1892-A nice presentation by the Simons Co., ebony shaft and a metal ferrule.
H. 1 3/4" x 2", O.L. 36"
\$250-\$350



242.



244.



245.

246. Exceptional Sword Cane

Ca. 1750-Malacca handle with two coin silver collars, small ivory handle with a horn insert atop, push button working mechanism, 31" 4-sided early engraved blade with various scrolls and royal designs, silver banded malacca shaft and a 4" brass ferrule. H. 1" x 5 1/2", O.L. 38 1/2"
\$1,000-\$1,500

247. Pilot's Army Cane

Ca. 1915-A cast metal soldier with pilot's wings, original lanyard, woven flexible shaft and a bullet ferrule. H. 2 1/2" x 2", O.L. 38"
\$300-\$500

248. Shark Vertebrae Cane

Ca. 1920-A nice example with a horn end cap and horn spacers, metal rod holds the vertebrae intact and a 3" ferrule. O.L. 35 1/2"
\$250-\$350

249. Two Silver Dress Canes

Ca. 1920-One with a very unusual carved top to bottom ebony shaft, the other with inlaid silver dots and both with ferrules. O.L. 34 1/2"
\$200-\$350



248.



249.



247.



246.





250.

250. Princess Margaret Preston Draper Umbrella

Early 20th Century- A silver and ivory Samuel Fox umbrella with a name plate for Mrs. Draper and her home town on the shaft, we feel that this might have been a custom made piece for her due to the handle looking much like her. Nice and usable silk cover O.L. 35"

\$500-\$1000



251.

251. German Cigar Smoking Cane

Ca. 1930-A carved automation handle with moving eyes, hat and cigar, ebonized shaft and a metal ferrule.

H. 2" x 3", O.L. 36"

\$300-\$400

253.



252. Kentucky Derby Cane

Ca. 1925-According to oral legend this plastic lined stripped material with a zipper was used to sneak liquor into the Kentucky Derby, when full it would look like a seat cane, could hold ice for mint juleps, bamboo handle, maple shaft and a metal ferrule.

H. 4 1/4" x 10", O.L. 36"

\$400-\$600

252.



254.



253. Tobacco Pipe System Cane

Ca. 1950-A handmade Briar Pipe with a cartouche with the initials R.C.M., brass collars, hardwood shaft and a horn ferrule.

Pipe 3" x 7", O.L. 35 1/2"

\$400-\$600

254. Stag Horn Bear Canes

Late 20th Century-A pair of carved stag horn canes done by the same hand, probably an Asian carver but very well done, both with hardwood shafts and horn ferrules.

H's. 3" x 4 1/2", O.L. 36"

\$500-\$600

255. Ivory Horse Hoof Cane

Ca. 1920-A nicely carved handle, British hallmarked coin silver collar, exceptional faux bamboo hardwood shaft and a horn ferrule. H. 3 1/2" x 1 1/2", O.L. 34 1/2"

\$300-\$400



255.

256.

256. Lucite Dog Cane

Ca. 1940-A well formed dog with two color glass eyes, large horn collar, bamboo shaft and no ferrule. H. 3" x 4", O.L. 33 3/4"

\$200-\$300



257. Wild Boar Stag Cane

Ca. 1875-An early carving of a stag boar with beaded glass eyes, ornate gold metal collar, rich exotic shaft and a horn ferrule. H. 5" x 2", O.L. 36"

\$400-\$600



257.

258. Chinese Ivory Cane

Ca. 1910-A carved ivory handle with various gods and dancing devils, silver metal collar, ebony shaft and a metal ferrule. H. 1 1/4" x 4 1/2", O.L. 36"

\$400-\$500



259. Ivory Alligator Cane

Ca. 1900-Probably an early Jacksonville carving, silver metal collar, orangewood shaft and no ferrule-Gator is 4 1/2" x 1 1/2", O.L. 32 1/2"

\$700-\$800



259.

260. Gold-Filled Dress Cane

Dated 1887-A very nice Simmons Presentation cane in exceptional condition, fine ebony shaft and a metal ferrule-H. 1 3/4" x 2 5/8", O.L. 36"

\$350-\$500



260.



261.

261. Michael Cribbins Folk-Art Cane

Dated 1861-A presentation Folk Cane from Mike to his friend, birds, scissors, fish, guns and various other carvings, some paint still visible, minor missing small pieces of wood in initials, heavy wear to the initials A.M.W., various stars and small carvings throughout, varnished black handle, original finish and a copper ring ferrule. O.L. 33

\$2,500-\$3,000

262. Gilded Age Rhino and Gold Cane

This early 19th Century cane has an interesting provenance and to best way to convey it is from the seller himself. "My grandmother came from an aristocratic Mexican family from Merida in the Yucatan. Her mother was English and her father was a wealthy rancher who had a plantation where they cultivated henequen. This period was the gilded age of Yucatecan society when 10 -15 families controlled the region and lived lavishly in mansions and lorded it over the Maya Indian population who worked in their houses and on their plantations. The gold knob has the Regil family coat of arms etched upon it and finds its origin in Regil, the Basque country of Spain. My branch of the family immigrated to Mexico in the early 18th century and married into the local aristocracy. Members of my family claim descendance from the original conquistador of the Yucatan, Francisco Montejo. I received this stick from my grandmother Beatriz de Regil in the 1970's whose hacienda Uayalceh still exist." O.L. 32" The gold handle is 2" x 1" and the full shaft is rhino.

\$2,500-\$3,000



262.

263. Floral Ivory Cane

Ca. 1890-A walrus ivory carving with beautiful detail, silver metal collar, rich exotic shaft and no ferrule. H. 4" x 1 3/4", O.L. 35 1/2"

\$250-\$350

263.

264. Stingray Tail Cane

Ca. 1860- An early nautical stingray tail cane with quite a sway to it, attached broken barb, very flexible, coin silver handle. O.L.- 35"

\$250-\$500

265 .Walnut Cane Stand

Holds 30 canes. 30" x 15"

\$250-\$400

266. Oak Cane Stand

Holds 20 canes. 28" x 15"

\$200-\$300

267. Novelty Erotica Coffin

Ca. 1920-Ebony coffin with brass fittings and shagreen lining. The hinged cover with skull and cross insignia unfolds to release a feather operated, wiggling Ivory male organ. Coffin 11" x 2 3/4" x 2, Male Organ 3 3/4" x 1 1/4"

\$2,000-\$3,000



264.

265.

266.

267.





Kimball M. Sterling, Inc. (TFL-1915)
125 West Market Street
Johnson City, Tennessee 37601
kimballsterling @ earthlink.net
423.928.1471

Photography by James Price

Catalog Design by KT Design, LLC
www.kristaft.com

© Copyright 2013 Kimball M. Sterling, Inc.