

Kimball M. Sterling Inc. • TFL-1915



Kimball & Victoria Sterling present an

# ANTIQUE AND MODERN CANE AUCTION



Saturday, October 13th • 11:00 a.m.







Kimball & Victoria Sterling present an

## **ANTIQUE AND MODERN CANE AUCTION**

Saturday, October 13th • 11:00 a.m.

Preview 9:00 a.m.

[www.AuctionAuction.com](http://www.AuctionAuction.com)

Kimball M. Sterling  
Auction Gallery  
125 West Market Street  
Johnson City, Tennessee 37604  
[kimballsterling@earthlink.net](mailto:kimballsterling@earthlink.net)  
423.928.1471

Live on the internet at  
[BIDSQUARE.COM](http://BIDSQUARE.COM)  
Two Time Winner of Best  
of Show from the National  
Auctioneers Association

# TERMS & CONDITIONS

1. Cash or check. A 20% buyers' premium will be added to the hammer price as part of the sale price for all bidders. Internet bidders will pay 23%. We reserved the right to hold purchases until the buyers checks clears if buyer is not known by us. Bank letter of credit is acceptable.

2. Mail or phone bids are accepted; the firm may require a deposit.

3. Kimball M. Sterling, Inc. has endeavored to catalog and describe the property correctly. All property is sold as is and neither the auction company nor the consignor will be responsible for descriptions, genuineness, provenance or condition of the property. No statement in the catalog made orally at the sale or otherwise shall be deemed to be a warranty, representation, or an assumption of liability. All the provenance is furnished by the consignor. Any litigation involved with this auction shall be held in Washington County, Tennessee, By registering for this auction you the bidder accepts all of the terms of this auction.

4. In the event of any dispute between bidders, the auctioneer shall have total discretion to determine the successful bidder, in which his determination shall be final or to re-offer and resale the article in dispute. Title of the item or items purchased by the bidder will pass at the fall of the gavel and declaration of bidder. This is not an approval auction. All measurements are approximate.

5. Principal auctioneer: Kimball M. Sterling #2467. B. Elizabeth Sterling, auctioneer # 5757. Firm Kimball M Sterling Inc. TFL-1915

6. Bidders may bid live on the Internet by visiting <http://www.auctionauction.com>. You may also view the auction at this site and bid by phone.

7. Communications:

Telephone 423-928-1471.

Fax 423-928-2816.

Cellular 423-773-4073, 423-773-4072.

Email [kimballsterling@earthlink.net](mailto:kimballsterling@earthlink.net)

8. We do not ship protected items overseas but anything else will be shipped by the UPS Store in Johnson City. We can however hold your item till you or a friend visit's the USA and you can take your items as a personal item or we can ship to a friend in the USA.

9. Kimball M. Sterling, Inc. will not be held responsible for bids received on the day of the auction, unexecuted absentee bids, phone bidders not contacted or slow Internet bids. Although we do attempt to get all bids executed problems do occur. There will be no recourse from the bidder. We will not be responsible for items left on our location for over 30 days.

10. Sale will be conducted at 125 West Market Street, Johnson City, Tennessee. 37604. Announcements day of the sale take precedence over pre-sale advertising. Any litigation that pertains to this auction will be conducted in the county of Washington in Tennessee and is agreed upon by registering for this auction.

11. Airport is the Tri-Cities Airport, which is approximately 20 miles from the gallery. Internet catalog and live bidding available at [www.auctionauction.com](http://www.auctionauction.com) Best Western Hotel: 423-282-2126. A very fine hotel which offers Sterling Auction a discount rate is the Carnegie Hotel 1216 W State of Franklin Rd, (423) 979-6400.

12. Please call for condition report on sale lots or email us. We do send out multiple photos by email of any lot in the auction. By registering for this auction you accept the terms.

13. Parking service is free.



### 1. Fine Whalebone Nautical Cane

Ca. 1860 - A massive whale's tooth handle and a 1 3/4" hexagonal shaft, the handle has five strand nautical knot weaving and 2" of crosshatching and a hexagonal carved tooth collar. Shaft has a pair of carved lanyard holes, nice original finish and never had a ferrule.

H. 4" x 2" O.L. 36"

**\$2,500-\$3,500**

### 3. Scrimshaw Whale's Tooth Nautical Cane

Ca. 1870 - A carved whale's tooth of a gentlemen with a strong chin and a pointed hat, coconut wood inlay in the handle, baleen collar, 40% hexagonal 60% cylindrical, with a 7/8" diameter, whale bone shaft.

H. 5" x 2" O.L. 37"

**\$700-\$900**

### 2. Nautical Whalebone Cane

Ca. 1870 - A carved hexagonal whale's tooth handle with the initials, "L.R." atop, the whalebone shaft is 40% hexagonal and 60% cylindrical with a 15/16th" diameter, a pair of diamond shaped eyelet holes of which most of the inlay is missing and never had a ferrule.

H. 1 3/4" x 1 1/2" O.L. 33 3/4"

**\$500-\$600**

**5. Turk's Knot Scrimshaw Nautical Cane**

Ca. 1865 - A finely carved Turk's knot in very high relief, three baleen and two whale's tooth spacers, cylindrical whalebone shaft,  $\frac{3}{4}$ " diameter, and a metal ferrule.

H.  $2\frac{7}{8}$ " x  $1\frac{1}{2}$ " O.L.  $31\frac{1}{4}$ "

**\$800-\$1,200**



**4. Walrus Bird Dress Cane**

Ca. 1900- A carved walrus handle with bright two-color glass eyes, silver plated ornate collar, exotic wood shaft and a metal ferrule.

H. 4" x  $1\frac{3}{4}$ " O.L.  $35\frac{1}{2}$ "

**\$450-\$600**

**6. Whalebone and Tooth Scrimshaw Cane**

Ca. 1860 - A nice early example with a turned and ribbed tooth handle, silver metal collar, hexagonal carved whalebone upper shaft with diamond and circular silver and baleen inlays,  $\frac{7}{8}$ " diameter, lower collar has four inlays of the same type, six inches from the tip of the cane there is an old repair which is actually very interesting with four copper rivets, never had a ferrule. There is a 1" piece of inlay missing from the upper shaft.

H.  $1\frac{3}{4}$ " x  $1\frac{3}{4}$ " O.L.  $34\frac{1}{2}$ "

**\$400-\$600**





**7. Captain's "Stern Castle" Scrimshaw Cane**

Ca. 1850 - A wonderful handle which gives the impression of a Captain's quarters, nickel size abalone inlaid atop with multiple abalone and pearl disc throughout the coconut wood handle, rectangular disc inlay between the hexagonal carved lower handle, matching inlay below the lower collar room, inlaid disc atop the 40% hexagonal 1 1/4" whalebone shaft, baleen spacer and no ferrule.

H. 2 3/4" x 2", O.L. 37"

**\$3,500-\$4,500**



**8. Walrus Tusk Eagle Dress Cane**

Ca 1890 - A carved Nast style walrus ivory handle with two collar glass eyes, fluted silver metal collar, thick dark malacca shaft and a metal ferrule.

H. 5" x 1 1/2", O.L. 36 1/2"

**\$800-\$1,000**



**9. Inuit/Northwest Inlaid Bird Cane**

Ca 1890 - A carved walrus tusk with stylized bird which has both abalone and horn inlay, nice original patina and the beak as dimensional carvings, signed Sterling collar, mahogany shaft, and 2" stag ferrule.

H. 4 1/2" x 2", O.L. 36"

**\$600-\$800**



**10. Nautical Scrimshaw Whalebone Cane**

Ca 1860 - Whales tooth knob handle with concentric circles, baleen spacer, 20% octagonal and 80% cylindrical,  $\frac{3}{4}$ " whale bone shaft, no ferrule.

H. 2  $\frac{1}{2}$ " x 1  $\frac{1}{2}$ ", O.L. 35  $\frac{3}{4}$ "

**\$500-\$700**



**12. Walrus Tusk Serpent/ Nude Cane**

Last quarter 20th Century - A high relief carving depicting a sea monster with a long tail, two color glass eyes and a bare breasted nude with long hair, flowers and various other high relief carvings, sterling signed collar, exotic snakewood shaft, with a 1  $\frac{7}{8}$ " stag ferrule.

H. 5" x 5  $\frac{1}{4}$ " O.L. 36"

**\$2,500-\$3,000**

**11. Nautical Scrimshaw Whalebone Cane**

Ca. 1865 - Octagonal whale's tooth handle with baleen disc atop, whalebone shaft, 20% hexagonal and 80% cylindrical whalebone shaft with a  $\frac{3}{4}$ " diameter, at end of hexagonal shaft there is scalloping, no ferrule.

H. 2" x 1  $\frac{1}{4}$ " O.L. 35"

**\$400-\$600**

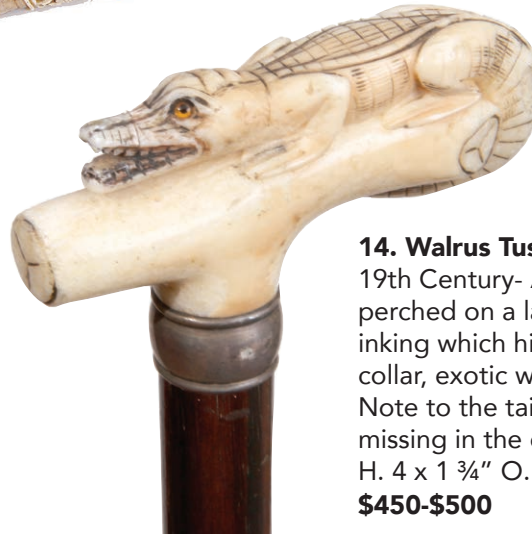




### 13. Massive Momento Mori Oosik Sword Cane

Handle dated 2017 - high relief oosik "walrus penis" carved handle with two skulls, one with top hat and holding a staff, "B.L. 2017" engraved on the bottom of handle, oosik push button, locking, working sword mechanism, 28 1/2" blued and etched blade, live oak shaft, shaft and sword are Ca. 1860 but handle is dated as previously mentioned and a stag horn ferrule.  
H. 6" x 1 3/4" O.L. 36"

**\$3,000-\$3,500**



### 14. Walrus Tusk Alligator Dress Cane

19th Century- A full figure walrus tusk alligator perched on a large log, two color glass eyes and India inking which highlights the gator, signed sterling collar, exotic wood shaft and a black horn ferrule. Note to the tail: some minor pieces can be seen missing in the curvature of the tail but not annoying.  
H. 4 x 1 3/4" O.L. 36"

**\$450-\$500**



### 15. Whale's Tooth Nautical Cane

Ca. 1865 - A carved whale's tooth handle with a tortoise disc atop, hardwood shaft and a metal ferrule.  
H. 3" x 1 7/8" O.L. 36 1/2"

**\$450-\$550**



### 16. Whale's Tooth Dress Cane

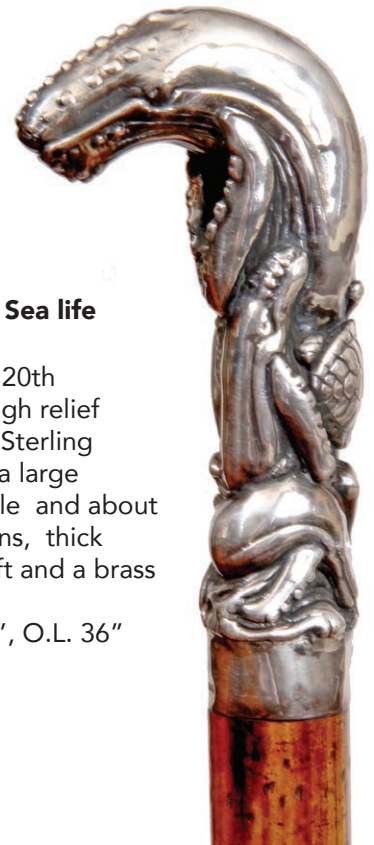
Ca. 1890 - A three piece handle with various baleen and wood spacers, silver collar, snakewood shaft and a metal ferrule.  
H. 4" x 2 1/4" O.L. 35 1/2"

**\$500-\$600**



**17. Walrus Tusk Horse Dress Cane**

Last quarter 20th Century - A large walrus horse with two color glass eyes, fluted silver metal collar, exotic wood shaft and a metal ferrule.  
H. 4 ½" x 1 ½" O.L. 37"  
**\$650-\$800**



**18. Sterling Sea life Dress Cane**

Last quarter 20th Century, a high relief cast, signed Sterling handle with a large tortoise whale and about three dolphins, thick malacca shaft and a brass ferrule.  
H. 5 " x 2 ¾", O.L. 36"  
**\$350-\$550**



**19. Sterling Octopus and Dress Cane**

Last quarter 20th Century - A massive high relief silver handle with an octopus wrapped around a nude with flowing hair, thick exotic wood shaft and a brass ferrule.  
H. 6" x 3 1/8" O.L. 36 ½"  
**\$450-\$650**



**20. Stag Skull and Octopus Cane**

Last quarter 20th Century - A modern high relief carving of many skulls and a vicious octopus atop, signed sterling collar, early thick malacca shaft and a long stag horn ferrule.  
H. 7" x 2 ¼" O.L. 36 ½"  
**\$550-\$700**



**21. Jacksonville Style Stag Alligator Carving**

Last quarter 20th Century - A carved stag representation of an African-American catching a painted alligator, nice paint decoration throughout, signer sterling color, mahogany shaft and brass ferrule.

H. 5 ¾" x 3" O.L. 36"

**\$1,500-1,700**



**23. Gold Dress Cane**

Ca. 1890 - A fine condition gold filled handle with ornate work throughout, script initials atop, hardwood shaft and a brass ferrule.

H. 2 ½" x 1 ¾" O.L. 34 ½"

**\$350-\$400**



**22. Sterling Octopus Dress Cane**

Last quarter 20th Century - A high relief cast octopus with two color glass eyes, ebony shaft and metal ferrule.

H. 4 7/8" x 1 ¾" O.L. 36"

**\$1,000-\$1,200**



**24. Egyptian Revival Dress Cane**

Early 20th Century - A nice revival cane with various Egyptian figures which are done in gold, thumb plate also has gold decoration, ebonized shaft and a metal ferrule.

H. 4 ½" x 2" O.L. 35"

**\$500-\$600**



**25. Fancy Gold/Diamond Dress Cane**

Early 20th Century - An ornate French unmarked 14k gold handle with around one karat of rose cut diamonds, rich snakewood shaft and a brass ferrule.

H. 1" x 1 3/4" O.L. 35 1/4"

**\$2,000-2,500**



**27. Mammoth Alligator**

Last quarter 20th Century - A mammoth carved alligator with two color glass eyes, ornate fluted collar, thick malacca shaft and a 2 1/2" stag ferrule.

H. 4 3/4" x 2 1/4" O.L. 36 1/2"

**\$1,000-\$1,200**



**26. Knob Kerrie Defensive Cane**

Late 19th Century - A woven leather weighted handle and shaft, small silver metal collar, a pair of lanyard eyelets, stepped bamboo shaft and a metal ferrule.

H. 1 3/4" x 2 1/4" O.L. 37"

**\$300-\$500**





**29. Shell Dress Cane**

Ca. 1900 - A tau handle of pressed shell, silver collar, ebonized shaft and a metal ferrule.

H. 3 ¾" x 1 ¼"

**\$400-\$450**



**28. Warthog Snake Dress Cane**

Last quarter 20th Century - A uniquely carved full figure handle of a snake with high relief scales and rattlers, black glass eyes, signed sterling fluted collar, exotic wood shaft and a metal ferrule.

H. 4 ¾" x 1 ½" O.L. 36 ½"

**\$650-\$750**



**31. Silver Cockatoo Cane**

Last quarter 20th Century - A signed sterling high relief cast bird with two color glass eyes, exotic wood shaft and a brass ferrule.

H. 3" x 5" O.L. 36"

**\$650-\$750**



**30. Japanese Stag Cane**

Ca. 1890 - A carved stag antler cane of a large monkey with a handful of fruit hidden behind his back, silver collar, bamboo shaft and a metal ferrule.

H. 5 ¼" x 2 ½"

**\$550-\$700**





**32. Santa Murte Stag Cane**

Last quarter 20th Century -  
A fully carved "lady of death"  
stag handle, signed sterling  
collar, snakewood shaft and a  
long stag ferrule.

H. 5" x 1 1/4" O.L. 36 1/4"

**\$650-\$750**



**33. Art Deco Dance Cane**

Ca. 1920 - A celluloid  
material period dance cane  
in nice condition, ebony  
shaft and a metal ferrule.

H. 1 1/4" x 2 1/2" O.L. 36"

**\$100-\$125**



**34. Snakewood Dress Cane**

Ca. 1925 - A handsome rich  
snakewood crook handle dress  
cane with a signed sterling collar  
and a metal ferrule.

H. 4 1/4" x 6"

**\$250-\$400**



**35. Gold Dress Cane**

Ca. 1900 - A gold-filled ornate high relief  
handle in nice condition, a .25 faceted black  
stone has been inserted to the handle where it  
meets the ebony shaft and has a metal ferrule.

H. 4" x 1 3/4" O.L. 33"

**\$350-\$450**



**36. Silver Angel Dress Cane**

Last quarter 20th Century - A high relief signed sterling casting of a male angel holding an apple, thick exotic wood shaft and a brass and metal ferrule.

H. 1 ½" 5 ¼" O.L. 36"

**\$550-\$650**



**37. Stag Skull and Snake Cane**

Last quarter 20th Century - A unique carving of seven skulls with a snake intertwined ornate signed sterling collar, snakewood shaft and a brass and metal ferrule.

H. 3" x 5 ½" O.L. 36 ½"

**\$600-\$700**

**39. Porcelain Dress Cane**

19th Century - A St. Cloud porcelain handle with an oriental motif, malacca shaft and a horn ferrule. Handle has a minor chip where the handle meets the shaft.

H. 1 ½" x 2 ¼" O.L. 36 ½"

**\$700-\$800**



**38. Stag Bear Cane**

Last quarter 20th Century - A busy high relief stag handle with five playing bears, signed sterling collar, late 19th Century twigs spur shaft with a silver medallion and brass and iron ferrule.

H. 3 ¼" x 6" O.L. 36"

**\$550-\$750**





**40. British Boar Dress Cane**

Ca. 1900 - Carved boar with glass eyes, hallmarked silver collar, snakewood shaft and handle with a brass and metal ferrule.

H. 6 1/2" x 2" O.L. 36"

**\$700-\$800**



**41. Horn Crook Dress Cane**

Ca. 1910 - A substantial blonde horn crook handle, small gold collar, malacca shaft and a matching horn ferrule.

H. 4 3/4" x 4 1/2" O.L. 34 1/4"

**\$250-\$350**



**42. Niello Defensive Dress Cane**

Last quarter 20th Century - A silver handle decorated with various Eastern designs which doubles as a weighted defensive handle, nice condition with an ebony shaft and a brass ferrule.

H. 1 1/2" x 2 1/4" O.L. 35 1/4"

**\$250-\$350**



**43. Gold Gauntlet Dress Cane**

Early 20th Century - A gold-filled handle presented to "George H. Clark by Col. S. L. Forney," ornate high relief and handle has a high polish, ebony shaft and a brass and metal ferrule.

H. 1 1/8" x 3 1/2" O.L.

**\$500-\$600**



**44. Gold Quartz Dress Cane**

Dated 1855 - A nice original hexagonal gold quartz disc atop, panels are inscribed, "President T.H. E.D. Schmidt, den 25 August 1855 die San Francisco" nice condition, malacca shaft and a metal ferrule. Minor dents as expected and can be seen in the photo."

H. 1 ½" x 2" O.L. 34 ¼"

**\$5,500-6,500**



**45. Stag Mountain Lion Dress Cane**

Last quarter 20th Century - A unique carving of a mountain lion attacking another wild animal, much open fretwork carving, signed sterling fluted collar, thick malacca shaft and a 2" horn ferrule.

H. 5 ¼" x 3 ¼" O.L. 36 ¼"

**\$600-\$750**

**46. Gold Quartz Dress Cane**

Ca. 1860 - A presentation gold quartz cane with a large hexagonal disc atop, presented to "Geo. C. Thatcher" fine condition, ebony shaft and a metal ferrule.

H. 1  $\frac{3}{4}$ " x 2  $\frac{3}{4}$ " O.L. 37"

**\$5,500-\$6,500**



**47. Pearl Dress Cane**

Ca. 1890 - An ornate mother of pearl stylized animal dress cane with red glass eyes and a silver pearl in its' mouth, the handle has a beautiful pearl luster, has some hand carving throughout, ornate silver attachments, hallmarked but unreadable, rich snakewood shaft and a brass and metal ferrule.

H. 3  $\frac{7}{8}$ " x 8  $\frac{7}{8}$ " O.L. 36"

**\$1,200-\$1,400**

**48. Sterling Nude Dress Cane**

Last quarter 20th Century - A signed sterling reclining full frontal nude, mahogany shaft and a brass and metal ferrule.

H. 5" x 2 1/2" O.L. 36"

**\$550-\$650**



**49. Folk Art Monkey Cane**

Ca. 1920 - A one piece carved burl cane with a monkey playing a fiddle, nice original surface and a metal ferrule.

H. 5" x 2 1/2" O.L. 36"

**\$250-\$350**



**50. Defensive Cane**

Ca. 1920 - A weighted handle and shaft with a silver metal disc atop which doubles as a billy club cane, original brass ferrule.

O.L. 37"

**\$150-\$250**



**51. Skull Rattle Cane**

Last quarter 20th Century - A signed sterling skull and crossbones cane which contains a rattle, nice ringed bamboo shaft and a metal ferrule.

H. 2 1/4" x 3 3/4" O.L. 36 1/4"

**\$550-\$600**



**52. Sterling Horse Dress Cane**

Ca. 2000 - A signed sterling high relief silver handle with two color glass eyes, sterling collar, thick snakewood shaft and a brass and metal ferrule.

H. 4 1/2" x 2 1/2" O.L. 36 1/4"

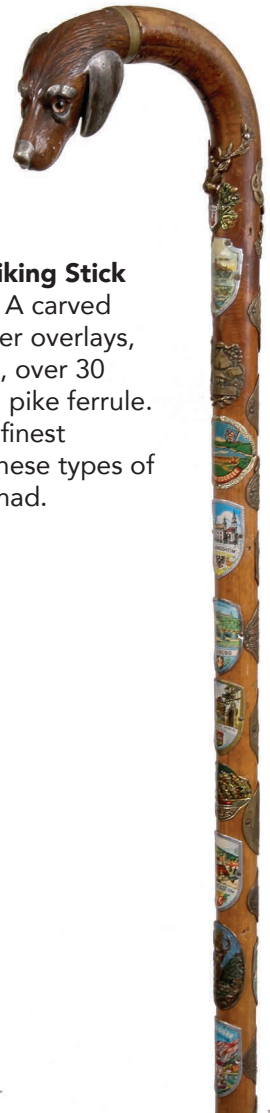
**\$550-\$650**





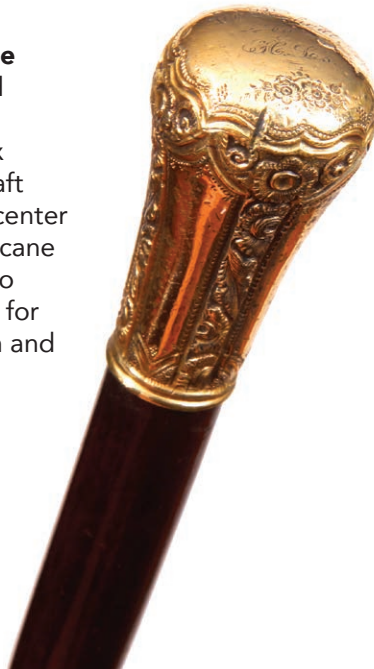
**54. Horn Dress Cane**

Ca. 1900 - A dark horn handle in fine condition, ornate silver collar, ebonized shaft and a metal ferrule.  
H. 4 ½" x 3 ¼" O.L. 35"  
**\$200-\$300**



**53. German Dog Hiking Stick**

Early 20th Century - A carved dog handle with silver overlays, two color glass eyes, over 30 hiking badges and a pike ferrule. This is probably the finest example of one of these types of canes that we have had.  
H. 3" x 3" O.L. 37"  
**\$400-\$500**



**55. Gold Suitcase Cane**

Ca. 1885 - A gold-filled ornate handle with a presentation atop, faux bamboo mahogany shaft which unscrews in the center and the bottom of the cane folds towards the top to make it easily available for packing, nice condition and a metal ferrule.  
H. ½" x 2" O.L. 36"  
**\$300-\$450**



**56. Dartmouth College Cane**

Early 20th Century - "Stan Whitman's" college cane, nice typical Native American atop and various named carved through the shaft with a horn ferrule.  
H. 2" x 3 ¾" O.L. 36"  
**\$200-\$300**



**57. Gold Dress Cane**

Last quarter 20th Century - A gold plated sterling knob made by the English cane maker Keith Cowey, nice condition, firm ebony shaft and a brass ferrule.  
H. 1 ½" x 2 ½" O.L. 36"  
**\$250-\$350**



**59. Yellowstone Park Tourist Cane**

A contemporary porcelain knob with paint decoration of a large moose and trees, hardwood shaft and a brass ferrule.

H. 1 3/4 x 1 1/4" O.L. 35 1/2"

**\$100-\$150**



**58. Toledo Sword Cane**

Ca. 1890 - A nice all wood Toledo sword cane with a working push button mechanism with an 18" blade which is signed Toledo, fine condition with a brass and metal ferrule.

O.L. 36"

**\$700-\$900**



**61. Native American and Gator Dress Cane**

Last quarter 20th Century- A contemporary carving of one of the most interesting ivory canes that is sought out by many collectors, quality carving in deer antler with black glass eyes, signed sterling fluted collar, mahogany shaft and a brass ferrule.

H. 6" x 2 1/2" O.L. 36 1/4"

**\$1,500-\$1,600**

**60. Cloisonné Dress Cane**

Ca. 1890 - A nice dark blue background with various groups of flowers in multiple colors, fine condition with no repairs seen, small horn collar, hardwood shaft and a horn ferrule.

H. 1 1/2" x 9 1/2" O.L. 35 1/2"

**\$600-\$800**





**62. Snake and Frog Silver Cane**

Last quarter 20th Century- A signed sterling silver handle with a snake about to capture a nearby frog, rich snakewood shaft and a 4 ½ " stag ferrule. H. 1 ¼" x 7" O.L. 36"

**\$400-\$600**

**63. Japanese Stag Cane**

Ca. 1890 - A carved Meiji stag with two gentlemen and various types of trees and foliage, three letter carved cartouche, signed sterling collar, rich snakewood shaft and a brass ferrule. H. 1 ¾" x 7 7/8" O.L. 35 ½"

**\$500-\$700**



**64. Japanese Sword Cane**

Ca. 1900 - A bamboo sword cane with orange shellac with a push button 17" blade with a small blood groove, nice original condition with a metal ferrule. O.L. 35"

**\$550-\$750**



**65. Sterling Bear Cane**

Last quarter 20th Century - A high relief casting of many silver bears done in the style of Wm. Beard, ornate collar which is signed sterling, exotic wood shaft and a brass and iron ferrule. H. 4 ½" x 3 ¼" O.L. 36 ¼"

**\$550-\$650**

**66. Blackamoor Stag Cane**

Ca. 1900 - A carved stag handle of a figure with two color glass eyes, signed sterling collar, stepped malacca shaft and a metal ferrule. H. 4 ½" x 2 ¼" O.L. 35"

**\$300-\$500**







**67. Snake and Skull Cane**

Last quarter 20th Century  
- A carved stag handle of a rattlesnake entwined around a skull, silver multiple skull spacer between the signed sterling collar and the handle, thick snakewood shaft and a stag horn ferrule.

H. 2" x 3" O.L. 36"

**\$500-\$600**



**68. Whalebone Nautical Cane**

Ca. 1875 - A nicely carved whalebone handle, original hexagonal tiger striped shaft and a 2" brass ferrule.

H. 1 1/4" x 1 1/4" O.L. 36 1/2"

**\$250-\$350**



**69. Sterling Nude Dress Cane**

Last quarter 20th Century - A contemporary reclining nude, partially bare breasted, ebony shaft and a metal ferrule.

H. 6" x 2 1/4" O.L. 36"

**\$650-\$800**



**70. Horn Sword Cane**

Ca. 1878 - A thick deep brown horn handle with original patina, push button locking mechanism, a 17" blade which is signed "Exposition 1878" beautiful stepped malacca shaft and a brass ferrule.

H. 5 1/2" x 2 1/2" O.L. 36 3/4"

**\$800-\$1,000**



**71. Gold Dress Cane**

Ca. 1885 - A gold-filled ornate presentation cane which has been professionally polished, thick mahogany shaft and a metal ferrule.

H. 1 1/2" x 2 1/4" O.L. 36 1/4"

**\$350-\$500**



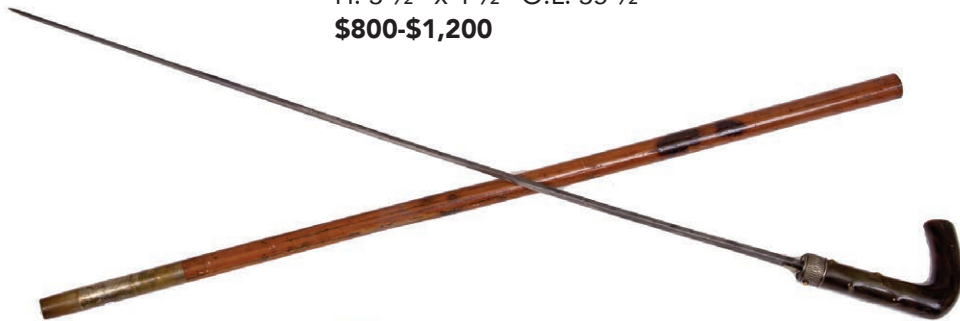


**72. Early Sword Cane**

Ca. 1850 - A carved twigs/horn handle in nice condition, a silver metal ornate collar which has a push button working mechanism for a 29" blued etched blade, original malacca shaft and a 5" metal and horn ferrule.

H. 3 1/2" x 4 1/2" O.L. 35 1/2"

**\$800-\$1,200**



**73. Art Nouveau Sterling Dress Cane**

20th Century - A sterling art nouveau style dress cane which is signed by the maker and .925, nice ebony shaft and a metal ferrule.

H. 4" x 3 3/4" O.L. 35 1/2"

**\$550-\$650**



**75. Art Deco Dress Cane**

Ca. 1920 - A machine turned 14 karat handle with the initials "M.S.H." atop, rain spot malacca shaft and a horn ferrule.

H. 1" x 1 1/8" O.L. 34 1/2"

**\$300-\$450**



**74. Cat/Bird Silver Dress Cane**

Last quarter 20th Century - A large signed sterling casting of some type of wild cat climbing a tree to attack a bird lying on its' nest, exotic wood shaft and a metal ferrule.

H. 7" x 2" O.L. 36"

**\$400-\$600**





**76. Art Nouveau Silver Dress Cane**

Last quarter 20th Century- A large signed sterling handle which has art nouveau ladies on both sides and other floral decoration, rich snakewood shaft and a metal ferrule.

H. 4 1/2" x 3" O.L. 36"

**\$600-\$800**



**77. Horn Hiking Stick**

Ca. 1920- An alpine hiking stick with a goat horn handle and a goat foot collar, "Luzern." is painted on the hardwood shaft and a pike ferrule.

H. 4" x 4 3/4" O L. 35 1/4"

**\$250-\$300**



**80. Sterling Lion Dress Cane**

Last quarter 20th Century - A high relief cast and signed sterling lion with two color glass eyes, nice snakewood shaft and a stag ferrule.

H. 5" x 3 1/2" O.L. 36"

**\$650-\$750**



**78. Agate Dress Cane**

Ca. 1895 - A beautiful deep brown with rose tints, banded agate handle, sterling collar, faux bamboo partridge wood shaft and a metal ferrule.

H. 1 1/4" x 2" O.L. 34 1/4"

**\$350-\$400**



**79. Rose Quartz Dress Cane**

Ca. 1890 - A polished rose quartz atop with seed pearls of which a few are missing, enamel lower half with a group of trees that surround the entire handle, two small areas of damage on the underside where the handle is fluted but not visible unless you turn the cane upside down, hardwood shaft and a metal ferrule.

H. 2 3/4" x 1 1/4" O.L. 34"

**\$350-\$450**





**81. Mammoth Ivory Horse Cane**

Last quarter 20th Century - A large mammoth ivory carving of a horse and full mane with two colored glass eyes, signed Sterling fluted collar, exotic wood shaft and a 2 1/2" brass ferrule .

H. 4 3/4" x 2 1/4" O.L. 36 1/2"

**\$750-\$1,000**



**82. Tiffany Silver Dress Cane**

Early Last 20th Century - A signed "Tiffany & Co, 19429A, makers Sterling 925-1000 M". Sterling dress cane in fine condition, thick exotic wood shaft and a brass ferrule.

H. 2 x 1 1/4" O.L. 36 1/4"

**\$400-\$600**



**83. Coin Purse Cane**

Circa 1910 - A leather covered handle with a spring fed upper compartment for the keeping of coins, silver collar, Howell cartouche attached to a honey malaaca shaft and a horn ferrule.

H. 1 1/8" x 1 1/2" O.L. 36"

**\$350-\$450**



**84. Gold Dress Cane**

Circa 1900 - A large gold-filled ornate presentation handle in nice condition, heavy relief casting, exotic wood shaft and a metal ferrule.

H. 4 x 2 1/2" O.L. 33 1/4"

**\$350-\$500**



**86. Turtle Dress Cane**

Ca. 1860 - A karat gold handle which is ribbed atop and a small Florentine collar near the bottom on the handle, pair of gold lanyard eyelets, the shell shaft is in very fine shape and it has a 2" metal ferrule.

H. 1 1/8" x 1 1/4" O.L. 34 7/8"

**\$800-\$1,200**

**85. Sterling Fighting Stallions Dress Cane**

Last quarter 20th Century - A full casting both front and back, Sterling collar, ebony shaft and a brass ferrule.

H. 4 1/2" x 2 3/4" O.L. 34"

**\$400-\$600**



**88. Amelia Earhart Stag Cane**

Last quarter 20th Century - A carved portrait cane of the famous female aviator, fluted signed Sterling collar, malacca shaft and metal ferrule.

H. 5" x 3" O.L. 36"

**\$600-\$750**

**87. Bone Fist and Snake Cane**

A modern carved bone clinched fist and snake cane, brass collar, hardwood shaft and a brass ferrule.

H. 2 1/4" x 3" O.L. 36"

**\$100-\$200**







**89. Flick Stick**

Early 20th Century - A one piece wood flick stick with what appears to be a silver deposit of dragons on the shaft, by flicking the cane forward a 4" pike blade appears and locks, brass ferrule. O.L. 35"

**\$800-\$900**



**90. Sterling Swan Dress Cane**

Last quarter 20th Century- A large cast swan head with glass eyes, ornate silver collar, thick ebony shaft and a brass ferrule. H. 3 1/2" x 2 3/4" O.L. 36"

**\$400-\$500**



**92. Makila Defensive Cane**

Late 19th Century - Horn handle with woven leather, when the handle is removed it produces a 3" pike blade, exotic natural branch shaft, 4" worked brass upper ferrule and a pike point.

H. 8 1/4" x 2" O.L. 35 1/4"

**\$350-\$450**



**93. Pushup Candle Stick Cane**

Circa 1880 - A working hinged top and pushup candle handle with a few minor dings, ornate raised foliage throughout the handle, malacca shaft and a brass ferrule. The handle also has a match compartment.

H. 4" x 2" O.L. 35 1/2"

**\$450-\$600**



**91. Art Nouveaux Dress Cane**

Circa 1890 - A .800 silver high relief handle with cattails and other foliage, two small unreadable touch marks, ebony shaft and a metal ferrule.

H. 4 1/2" x 3 1/2" O.L. 36 1/2"

**\$450-\$550**





**94. Peter and the Wolf Dress Cane**

Circa 1880 - Ornate gold filled handle, 2 ½" porcelain sleeve with a small child and a wolf, gold metal collar, ebony shaft and a horn ferrule.  
H. 4" x 1 ½" O.L. 34 ¾"

**\$250-\$400**



**96. Folk Art Lodge Cane**

Late 19th Century - A gem of a folk art cane with high relief carving and inking with an eagle head atop the handle, this Fraternal Order of Eagles cane has various birds, foliage, geometric symbols, bibles, skull and crossbones, brick tunnel, butterfly, calla lilies, shoe, coffee cup, boat paddle, boxing glove, goat, barrel, and much more, some inscriptions throughout the cane are "liberty and truth, justice and equality, F.O. E., L.T. J. C, poison, holy bible, tunnel" and more, fine condition with a brass ferrule.

O.L. 35 ¾"

**\$1,200-\$1,600**



**95. Horse Dress Cane**

Last quarter 20th Century - A cast Sterling handle with six horses cast in high relief, signed Sterling ornate collar, exotic wood shaft and a metal ferrule.

H. 4" x 3" O.L. 36"

**\$500-\$600**



**97. Agate Vertebrae Cane**

Circa 1900 - A nicely colored agate, silver plate collar, vertebrae shaft and a metal ferrule.

H. 1 ¼" x 2" O.L. 32 ¼"

**\$250-\$350**





**98. Silver Fox and Pheasant Dress Cane**

Circa 1900 - A high relief crutch handle with a full figure fox and pheasant, unreadable hallmarks but probably German in .800 silver, hardwood shaft and a horn ferrule.  
H. 4 ¾" x 4 ¾" x O.L. 36"

**\$600-\$700**

**100. Menelaus Silver Dress Cane**

Last quarter 20th Century  
- A high relief Sterling casting of Helen of Troys husband, thick ebony shaft and a metal ferrule.  
H. 4" x 2" O.L. 36 ¼"  
**\$500-\$600**



**99. Horn Sword Cane**

Circa 1880 m- A horn sword cane with a push lock button working mechanism which has a 11 ½" triangular etched blade, split bamboo shaft and a metal ferrule.  
H. 3 ¾" x 3" O.L. 35"

**\$500-\$600**



**101. Early American Stag Cane**

Circa 1800 - A classic representation of an early American cane with a stag handle with a cartouche atop, small metal collar with matching iron eyelets, natural twigspur shaft and an original 2" brass ferrule.  
H. 3" x 2 ¼" O.L. 32 ¾"

**\$150-\$250**

**102. Stag Presentation Cane**

Dated 1903 - An antler handle with a silver medallion atop with presentation "F.H. Churchill 01 New York to Harry Hale", silver collar, smooth hickory shaft and a metal ferrule.  
H. 2 ½" x 1 ½" O.L. 36"

**\$150-\$200**







**103. L.B.J. Political Cane**

A Texas yellow pine political cane which is printed "Walk Away with LBJ Texas yellow pine-Temple White Co.", Painted red knob handle and a drilled eyelet hole and no ferrule.

H. 1" x 1 1/4", O.L. 36 1/4"

**\$100-\$125**



**106. Dwight Eisenhower Cane**

A plaster cast painted head of Ike smiling, thick bamboo shaft and a painted ferrule.

H 3" x 2 3/4" O.L. 36 1/4"

**\$100-\$150**

**104. American Flag Cane**

Early 20th Century - An American parade cane with 39 stars. The interesting thing here is there was never an American flag with 39 stars, hollow shaft, copper collar, 11" x 17" flag, Britannia handle, hardwood shaft which has stylized paint flag decoration and a metal ferrule.

H. 1 3/4" x 1 1/34" O.L. 37 1/4"

**\$350-\$450**



**107. Michael Cribbins Folk Cane (attributed)**

Dated 1840 - An unsigned but attributed Cribbins cane which was probably a birthday present for "J.J. Hadden, Feb 26, 1840", a record of the death of Hadden finds him buried 8.3 miles from Lake Orion, a one piece diamond willow branch and the typical Cribbins Ferrule.

O.L. 35 1/2"

**\$600-\$1,200**



**105. Gutta-Percha Dog Head Cane**

Circa 1875 - Much like the Remington handle but this dog has two-colored glass eyes, large signed Sterling collar, walnut shaft and a metal ferrule.

H 3 1/2" x 2 1/2" O.L. 37 1/2"

**\$400-\$600**







**108. Sterling Dress Cane**

Circa 1890-A signed Sterling spiral knob dress cane, honey malacca shaft and a metal ferrule.

H. 1 ½" x 1 ¼" OL 32 ¼"

**\$100-\$150**

**109. Bone Hands On Dress Cane**

Circa 1870 - A carved bone handle with a hand grasping a bone pommel handle, stag horn disc atop, pair of silver eyelets, oak shaft and metal ferrule.

H. 3" x 3 ¼" O.L. 33 ¾"

**\$250-\$400**



**110. Roycroft Arts and Crafts Cane**

Dated 1903- A branded symbol Roycroft oak cane, inscribed "July 4 1903", this Independence Day souvenir has a drilled lanyard hole, original finish and never had a ferrule.

O.L. 34 ¾"

**\$400-\$600**



**111. Dog Folk Cane**

Circa 1900 - A carved wood handle which could be a retriever with two colored glass eyes, small silver metal collar, malacca shaft and a metal ferrule.

H. 1 ¾" x 2 ¾" O.L. 35"

**\$100-\$200**

**112. Gold Dress Cane**

Circa 1880 - A gold filled handle which has fancy work throughout, hexagonal panels of which one is signed "W.J. Hunter", atop the handle inscribed is "80 and U.L.", ebonized shaft and a metal ferrule.

H. 2 ¼" x 1 ¾" O.L. 33 ½"

**\$200-\$250**





**113. Stag Boxer Cane**  
 Circa 1885 - A high relief carved stag handle of a reclining dog with glass eyes, signed Sterling ornate collar, all with nice original patina, exotic wood shaft and a metal ferrule.  
 H. 2" x 5 1/4". O.L. 35 1/8"  
**\$250-\$350**

**115. Aleut Walrus Tusk Cane**  
 Circa 1900 - A native carved walrus tusk with a fox and a walrus, original patina in fine condition, signed Sterling collar, nice bamboo shaft and a metal ferrule.  
 H. 7" x 2" O.L. 40"  
**\$600-\$900**



**116. Court Cane**  
 Dated 1778 - An original court cane in fine condition with a large ribbed saw tooth silver collar which has the date of the cane and coin silver lanyard holder, coin silver top, nice malacca shaft and a 6" brass ferrule.  
 H. 1 1/4" x 1 1/4" O.L. 48"  
**\$700-\$1,200**

**114. "Silver Greys" Folk Cane**  
 Dated 1809 - A rustic one piece substantial branch shaft with its original patina and two large carved lanyard holes, inscribed in the cane is "In. Wyer in. Port Silver Greys Comp. Y found Janry. 1809", replaced copper ferrule.  
 O.L. 32"  
**\$150-\$300**



**117. Toledo Dress Cane**  
 Circa 1900 - A very nice example in fine condition of Toledo work, small gold metal collar, ebony shaft and a metal ferrule.  
 H. 4 1/4" x 4 1/2" O.L. 37"  
**\$300-\$450**



**118. All Horn Dress Cane**  
 Circa 1920 - A black horn crutch handle, four piece segmented shaft cane with a horn spacer and a metal ferrule.  
 H. 4 1/4" x 4 1/2" O.L. 36 1/2"  
**\$300-\$500**



**119. Pair of Black Horn Dress Canes**

Circa 1920 - A pair of nice horn handles one with a silver collar and the other in brass, 2 nice hardwood shafts and metal ferrules. Smallest handle is 4" x 2 1/2", average length is 36".  
**\$200-\$300**



**120. Horn Dress Cane**  
 20th Century - A large horn handle dress cane, gold metal collar, hardwood shaft and no ferrule.  
 H. 4 3/4" x 4" O.L. 36 1/4"  
**\$150-\$250**



**121. Formal Horn Dress Cane**  
 Circa 1900 - a carved faux bamboo handle, silver metal collar, matching faux bamboo exotic wood shaft and a metal ferrule.  
 H. 4 1/4" x 2 3/4" O.L. 35 1/2"  
**\$200-\$300**



**122. Twisted Horn Dress Cane**  
 Circa 1900 - Twisted horn handle in fine condition, hallmarked English silver collar, faux bamboo partridge wood shaft and a metal ferrule.  
 H. 4" x 2 3/4" O.L. 35 3/4"  
**\$250-\$350**



**123. Stylized Elephant Horn Cane**  
 Circa 1900 - With great imagination this handle appears to be a stylized elephant, signed Sterling American collar, stepped bamboo and a metal ferrule.  
 H. 4" x 2 1/4" O.L. 35 1/2"  
**\$200-\$300**





**124. Twisted Horn Cane**

Circa 1900 - A nice example, ornate silver metal collar, ebony shaft and a brass ferrule.

H. 3 3/4" x 1 3/4" O.L. 35 1/4"

**\$200-\$250**



**125. Twisted Horn Dress Cane**

Circa 1885 - A twisted horn handle with a thumb rest and a silver endcap, ornate silver metal collar, ebonized shaft and a metal collar.

H. 4" x 2 1/2" O.L. 36"

**\$200-\$350**



**126. Gold Dress Cane**

Dated 1885 - An ornate Gold-filled handle in nice condition, ebony shaft and a metal ferrule.

H. 3 1/4" x 1 3/4" O.L. 35"

**\$200-\$250**



**127. Gold Opera Cane**

Circa 1900 - A small gold filled ornate handle with some minor dings on the endcap, ebony shaft and metal ferrule.

H. 2 3/4" x 1 1/4" O.L. 36 1/4"

**\$100-\$150**



**129. Stag Horn Country Cane**

Circa 1880- A nice primitive stag handle with diamond and dot metal silver inlay, wrapped silver wire collar which is probably later than the cane itself, faux bamboo hardwood shaft and a metal ferrule.

H. 5" x 3"

**\$150-\$250**



**128. Horn Dress Cane**

Circa 1900- A Dark brown crutch handle, ornate brass collar, oak shaft and a metal ferrule.

H. 4 1/2" x 3" O.L. 35"

**\$150-\$250**

**130. Belgium Memento Mori**

Circa 1800 - An expertly carved wooden skull, small silver metal collar, this cane has reportedly being deaccessioned from a museum in Belgium years ago, coil silver football shaped eyelets, large stepped bamboo shaft and a 5" metal ferrule.

H. 4" x 2 1/4" O.L. 37"

**\$1,200-\$1,400**



**131. Noblemen's Cane**

Dated 1797 - A fine early dress cane with a burl knob that has a hand engraved lower section with various flowers and foliage, ornate saw tooth collar, ornate lanyard guard which has "17 CK 97", hardwood shaft which has a sway to it and a 3 1/4" iron ferrule.

H. 1 1/2" x 3" O.L. 42"

**\$600-\$900**



**132. Gun Cane**

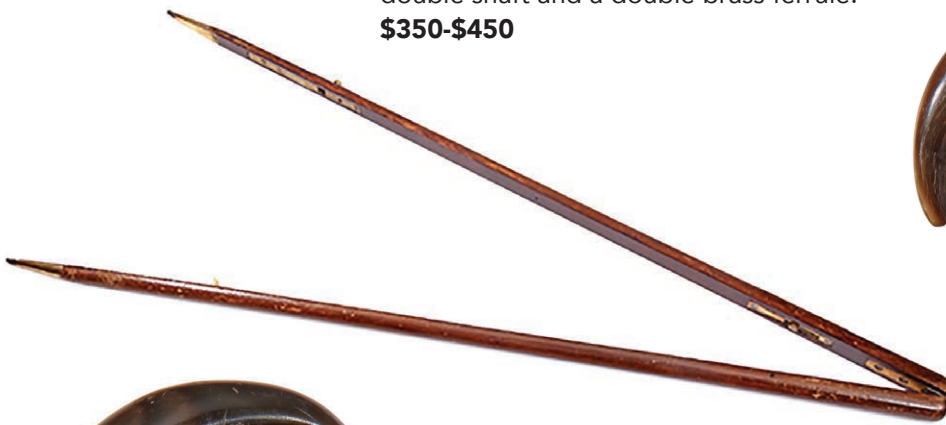
Circa 1880 - Black horn handle with a brass receiver for an iron stock, rotating silver metal collar with drop down trigger, probably a Belgium 410 cal. made for an Asian market, fine working condition with a removable brass ferrule, gun has a pair of sights which one is near the loading mechanism and the other near the end of the barrel.

**\$1,000-\$1,500**

**133. Sergeant Majors Pace Cane**

1920 - A Sergeant Majors system cane which was used to measure pace distances, brass accouterments, hardwood double shaft and a double brass ferrule.

**\$350-\$450**



**134. French Rifle Cane**

Circa 1890 - A horn handle, probably 22 cal., French working gun cane, the silver metal collar slides and a trigger is produced, the shaft separates to load the single shot and then is twisted to cock the working mechanism, hardwood shaft and a locking removable tweezer ferrule.

**\$1,000-\$1,500**

**135. Dumonthier Type Gun Cane**

Circa 1885 - A nice example which is probably French made but is not marked, probably 7mm, mechanism is working fine with push button trigger, black horn handle with a small amount of expected damage, stepped malacca shaft and no ferrule. H. 4" x 2", O.L. 35"

**\$800-\$1,200**



**136. Chinese Bronze Cane**

Mid Last quarter 20th Century - A Chinese bell bronze dress cane with a cast man with a long beard as the handle, an acid etched shaft which has various characters and designs and a wood plug ferrule. H. 4" x 3", O.L. 34"

**\$150-\$250**





**137. Scribes Stanhope Cane**

Mid 20th Century - A three piece system cane, silver metal handle which has a Stanhope of a French lady in a bathing suit "Made in France", the center compartment doubles as a fountain pen, top compartment has an ink reservoir, hardwood decorated shaft and a metal ferrule.

H.  $\frac{3}{4}$ " x 1" O.L. 33"

**\$150-\$250**



**139. Pair of Defensive Canes**

A modern pair of defensive canes, one being a sword and the other being a flange, nice normal sized handles and 36" shafts.

**\$150-\$250**



**141. La Redoutable Modern Cane**

21st Century - This is a nice copy of the rare French cane in working condition, Handle is a carved monk with a bone face, by pulling the handle 8 blades appear in the hardwood shaft and it has a metal ferrule.

H. 7" x 1  $\frac{3}{4}$ ". O.L. 37"

**\$300-\$500**



**138. Full Horn Dress Cane**

Circa 1900 - An unusual hexagonal horn dress cane which has various colorful polka dots in each segment, black horn handle with a good thumb rest and a small metal ferrule.

H. 4  $\frac{3}{4}$ " x 2" O.L. 36"

**\$150-\$250**



**140. Agate Dress Cane**

Circa 1900 - A banded agate dress cane in nice condition, gold metal collar, split malacca shaft and a metal ferrule.

H. 1  $\frac{1}{2}$ " x 1  $\frac{1}{2}$ ", O.L. 35  $\frac{1}{2}$ "

**\$150-\$250**

**142. Flick Stick**

21st Century - A modern copy of an early flick stick in working condition, the four sided serrated blade is nine inches long and works just like the original one, silver metal collar, oak shaft and a metal ferrule.

H. 4" x 1 1/4" O.L. 36"

**\$300-\$400**

**143. Silver and Gold Dress Canes**

Circa 1900 - A pair of nice dress canes both with good shafts and ferrules, average length is 36"

**\$100-\$200**

**144. Pair of Canes**

One with a horn handle Stocknagle badges and the other a stacked leather defensive cane, average length 35"

**\$100-\$200**



**145. Three Piece Cane Lot**

Three piece assortment including a blackthorn, celluloid handle and a carved eagle, average length 36".

**\$100-\$200**



**146. Masonic Folk Art Cane**

Dated 1893 - A nice one piece folk art cane with Masonic emblems plus and alligator, "Compliments of A.W. Webb, Tom Whitley", original patina and metal ferrule.

O.L. 36"

**\$300-\$500**



**147. POW Folk Art Cane**

Circa 1915 - A high relief carved "Souvenir De Captivite", a full length high relief snake circle's the inscription, drilled lanyard hole and a 5 1/2" pike iron ferrule.  
O.L. 37"

**\$300-\$500**



**148. Spanish Vera Cane**

Circa 1725 - A nice example with a silver handle which has small hammer work atop, original lanyard holder and four silver scalloped metal collars, exotic wood shaft and a 2 1/2" brass ferrule.  
O.L. 33 1/2"

**\$500-\$800**

**150. Jeweled Dress Cane**

Late 19th century - An ornate handle which has three gold plated medallions with six blue faceted stones, the balance of the handle is in a silver metal with Florentine handwork and two high relief flowers, ornate silver collar with what appears to be the original chain, hard maple shaft and a brass ferrule.

H. 2 1/4" x 2 1/2" O.L. 37"

**\$1,000-\$1,200**



**149. Pair of Folk Art Eagles**

Mid 19th Century - A pair of folk art eagles which are commonly referred to as "Civil War Canes", one has a partially carved shaft and the other one is plain, both natural grown shafts with original patina and metal ferrules.

Average length 36"

**\$200-\$350**

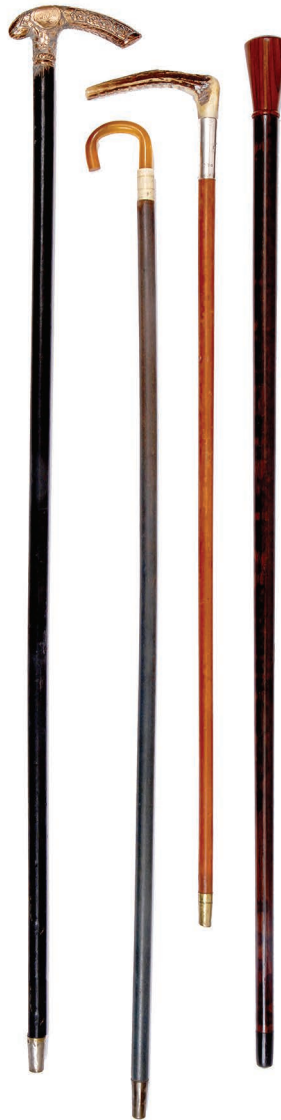




**151. Beaded Folk Cane**  
 Circa 1925 - A fully beaded crook handle in fine condition, possibly Native American and an iron pike ferrule, with some minor bead loss.  
 H. 5 ½" x 4" O.L. 39"  
**\$400-\$600**



**153. Sterling Dress Cane**  
 Circa 1920 - A unsigned but tested Sterling three sided handle, matching triangular hardwood shaft with a metal ferrule.  
 H. 1 ¼" x 1 ¾" O.L. 37"  
**\$200-\$300**



**152. Victorian Children's Canes**  
 A collection of four children's canes in good condition, gold filled-stag-wood-bone. All have nice hardwood shafts and all have metal ferrules.  
 Average length 21"  
**\$300-\$500**



**154. Gold Dress Cane**  
 Circa 1925- An ornate gold filled handle with minor dings, large brass collar, horn/maybe tortoise, overlaid shaft and a metal ferrule.  
 H. 1 ¾" x 3" O.L. 36"  
**\$250-\$350**

**155. Pair of Flashlight Canes**  
 A pair of system stick flashlights, one being an art deco with a Bakelite handle and the other being a mid-century modern glass handle, by putting batteries in the cane and turning the handle the light would come on, both have hardwood shafts and metal ferrules.  
 O.L. 36"  
**\$300-\$500**

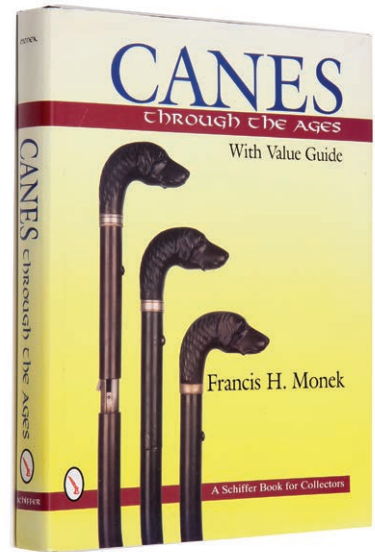




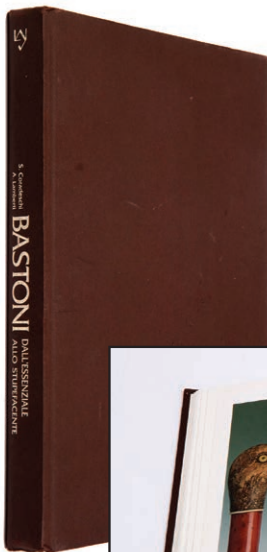
**156. Dartmouth Indian Cane**  
Early 20th Century - "Henry A. Bates"  
college cane has more signatures that  
we have ever seen on any example of  
this, nice original paint, silver metal collar  
hardwood shaft and a metal ferrule.  
O.L. 36"  
**\$200-\$300**



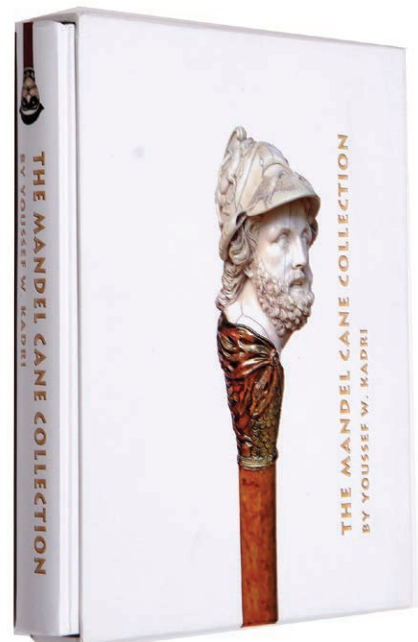
**158. "Verticle Art"**  
By: Umberto Barone  
Book is still under shrink-wrap  
**\$250-\$350**



**157. "Canes Through the Ages"**  
By: Frank Monek - mint condition  
**\$100-\$200**



**159. "Bastoni"**  
by S. Coradeschi  
**\$100-\$200**



**160. "The Mandel Cane Collection"**  
By: Yousef W. Kadri  
**\$100-\$200**







Photography by James Price

Catalog Design by KT Design, LLC  
[www.ktdesignllc.com](http://www.ktdesignllc.com)

© Copyright 2018 Kimball M. Sterling, Inc.

Kimball M. Sterling, Inc. (TFL-1915)  
125 West Market Street  
Johnson City, Tennessee 37604  
[kimballsterling@earthlink.net](mailto:kimballsterling@earthlink.net)  
423.928.1471

**[www.AuctionAuction.com](http://www.AuctionAuction.com)**