



SATURDAY,  
**FEBRUARY 7TH**  
11:00 A.M.

KIMBALL AND VICTORIA STERLING PRESENT A

# WINTER

**ANTIQUE CANE**  
A U C T I O N





SATURDAY,  
**FEBRUARY 7TH**  
11:00 A.M.

**Preview**  
Saturday,  
February 7th  
at 9:30 AM EST  
Friday,  
February 5th  
12:00-5:00 PM

Live on the internet at  
[LIVEAUCTIONEERS.COM](http://LIVEAUCTIONEERS.COM)  
Two Time Winner of Best of Show  
from the National  
Auctioneers Association

Kimball M. Sterling Auction Gallery  
125 West Market Street  
Johnson City, Tennessee 37604  
[kimballsterling@earthlink.net](mailto:kimballsterling@earthlink.net)  
423.928.1471

KIMBALL AND VICTORIA STERLING PRESENT A

# WINTER

## ANTIQUE CANE

### A U C T I O N

[www.AuctionAuction.com](http://www.AuctionAuction.com)



# TERMS & CONDITIONS

1. Cash or check. A 20% buyers' premium will be added to the hammer price as part of the sale price for all bidders. Internet bidders will pay 23%. We reserved the right to hold purchases until the buyers checks clears if buyer is not known by us. Bank letter of credit is acceptable.

2. Mail or phone bids are accepted; the firm may require a deposit.

3. Kimball M. Sterling, Inc. has endeavored to catalog and describe the property correctly. All property is sold as is and neither the auction company nor the consignor will be responsible for descriptions, genuineness, provenance or condition of the property. No statement in the catalog made orally at the sale or otherwise shall be deemed to be a warranty, representation, or an assumption of liability.

4. In the event of any dispute between bidders, the auctioneer shall have total discretion to determine the successful bidder, in which his determination shall be final or to re-offer and resale the article in dispute. Title of the item or items purchased by the bidder will pass at the fall of the gavel and declaration of bidder. This is not an approval auction. All measurements are approximate.

5. Principal auctioneer: Kimball M. Sterling #2467. B. Elizabeth Sterling, auctioneer # 5757. Firm Kimball M Sterling Inc. TFL-1915

6. Bidders may bid live on the Internet by visiting <http://www.auctionauction.com>. You may also view the auction at this site and bid by phone.

7. Communications:  
Telephone 423-928-1471.  
Fax 423-928-2816.  
Cellular 423-773-4073, 423-773-4072.  
Email [kimballsterling@earthlink.net](mailto:kimballsterling@earthlink.net)

8. We do not ship protected items overseas but anything else will be shipped by the UPS Store in Johnson City. We can however hold your item till you or a friend visit's the USA and you can take your items as a personal item or we can ship to a friend in the USA.

9. Kimball M. Sterling, Inc. will not be held responsible for bids received on the day of the auction, unexecuted absentee bids, phone bidders not contacted or slow Internet bids. Although we do attempt to get all bids executed problems do occur. There will be no recourse from the bidder. We will not be responsible for items left on our location for over 30 days.

10. Sale will be conducted at 125 West Market Street, Johnson City, Tennessee. 37604. Announcements day of the sale take precedence over pre-sale advertising. Any litigation that pertains to this auction will be conducted in the county of Washington in Tennessee and is agreed upon by registering for this auction.

11. Airport is the Tri-Cities Airport, which is approximately 20 miles from the gallery. Internet catalog and live bidding available at [www.auctionauction.com](http://www.auctionauction.com) Best Western Hotel: 423-282-2126. A very fine hotel which offers Sterling Auction a discount rate is the Carnegie Hotel 1216 W State of Franklin Rd, (423) 979-6400.

12. Please call for condition report on sale lots or email us. We do send out multiple photos by email of any lot in the auction. By registering for this auction you accept the terms.

13. Parking service is free.





1.

### 1. Spectacular Ivory Elephant Cane

Ca. 1880-Substantial ivory knob carved in fine and naturalistic detail as a full bodied foraging elephant. The bulk animal is amazingly adapted to the form of the handle and comes on an ebony shaft embellished with extensive ivory dot inlay and fitted with a long stag horn ferrule. H. 4" x 2 1/2", O.L. 36 3/4"

**\$2,000-\$3,000**

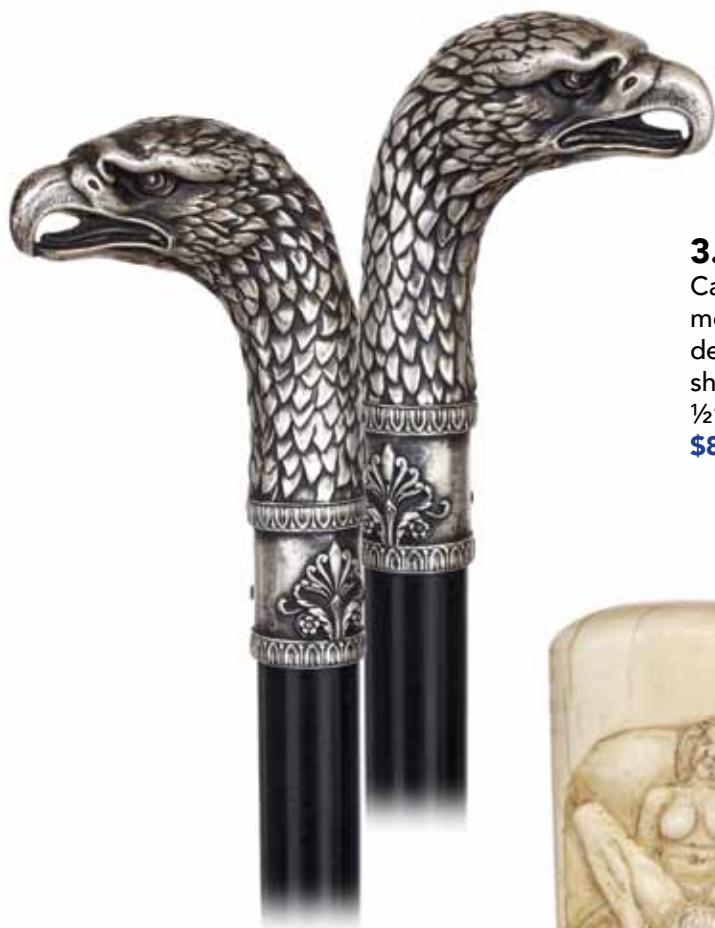


2.

### 2. Meissen Porcelain Dress Cane

Ca. 1840-Substantial porcelain knob in a classic Baroque shape with a slightly raised round top micro painted with three large flower panels on the side and two birds on the top. Opulent, rich and raised gold moriage framing. While the knob defied time with great pride and survived over one and half centuries in mint condition and with its entire original spark, the malacca shaft and its metal ferrule show a complimenting age patina. H. 2 3/4" x 1 1/2", O.L. 33 1/2"

**\$1,500-\$2,000**



**3.**

### **3. Silver Eagle Head Dress Cane**

Ca. 1900-L-shaped silver handle well modeled and delicately hand chased to depict an eagle head, ebonized hardwood shaft and a metal ferrule. French. -H. 4" x 2 1/2", O.L. 36 1/4"

**\$800-\$1,000**

**4.**

### **4. Ivory Erotic Cane**

Ca. 1900-Fine grained, straight and long, oval and tapering ivory handle carved with an erotic panel on each side, ebony shaft and a stag horn ferrule. The remarkably naughty and vibrant panels are rich in delicate and very fine details. Obviously treasured its entire life, this cane survived in mint condition and with an enviable luster to the ivory. H. 14 1/2" x 1 1/2", O.L. 37 3/4"

**\$6,000-\$8,000**





6.



5.

### 5. Ivory Erotic Cane

Circa 1890-Very unique ivory ball knob plain on one side and carved in low relief with an erotic motif on the other. The vintage depiction is in the taste of the days the best Victorian tradition. The knob comes with its turned ivory collar and a mahogany shaft with a long stag horn ferrule. H. 2 ¼" x 2", O.L. 32 ¾"

**\$1,200-\$1,800**



7.

### 6. Figural Silver Art Nouveau Dress Cane

Ca. 1900-L-shaped silver handle beautifully modeled with the head of a beauty with long and curvaceous hair festooned with a flower, faux sprig ebony shaft and a metal ferrule. The cane is authenticated by a full set of German hallmarks including a "GESCHÜTZT" which means Patent. H. 4" x 2 ½", O.L. 35 ½"

**\$800-\$1,000**

### 7. Ivory Erotic Cane

Ca. 1900-Substantial ivory knob carved with a bent woman showing on one side her head with down falling, long hair and on the other her butt and intimate parts with down pulled lace underpants. The knob comes with its turned ebonized hardwood plinth collar and a malacca shaft with a horn ferrule. H. 4 ¼" x 2", O.L. 39 ¼"

**\$3,000-\$4,000**



## 8. Tiffany Hard Stone Dress Cane

Ca. 1900-Large and well-proportioned asymmetrical Baroque shaped rhodonite handle with the desirable intense pink color and distinguishing dark veins, silver collar with two rows of hearts and struck "TIFFANY & Co." and "STERLING" and an ebony shaft with a silver collar and a brass ferrule. This cane belongs to the most desirable upscale jewelry objects or Virtue and is of the best of its kind. It was obviously carefully used and survived intact. H. 4  $\frac{3}{4}$ " x 2", O.L. 32"

**\$6,000-\$8,000**



8.



9.

## 9. Ivory Monkey and Vine Cane

19th Century-A very fine carved ivory clamping monkey on a one piece vine shaft with a natural bulb as knob and a metal ferrule. A dense hairy coat as well as bare sitting pads on the rumps add to its charm. Rich surface patina. Ivory Monkey 3  $\frac{3}{4}$ " x 1  $\frac{1}{2}$ ", O.L. 34  $\frac{1}{2}$ "

**\$1,200-\$1,800**





10.

### 10. Ivory Horse Cane

Hallmarked 1884-Large and fine grained ivory handle carved to depict a resting horse, ebony shaft with a well chased silver collar struck with London hallmarks 1884 and a stag horn ferrule. H. 4 ½" x 2 ½", O.L. 37 ¼"  
\$1,500-\$2,000



### 11. Figural Hard Stone Cane

Viennese, Ca. 1900-Greenish heliotrope hippopotamus and its turned plinth on a malacca shaft with a silver wire collar and a horn ferrule. The joyous flair of the amphibious animal is accented by the eyes with ruby cabochons on the roof of the skull and its matt surface, in contrast to the polished plinth, lends it a naturalistic touch and makes it pleasing to the hand of the cane wearer. This one-of-a-kind cane is in the Fabergé Russian Style and belongs to the upscale jewelry Objects of Virtue. H. 2 ¾" x 2 ¾", O.L. 35 ½"  
\$6,000-\$8,000



### 12. Ivory Erotic Dress Cane

Ca. 1900-Ivory crook handle depicting the intimate organs of a man, ebony shaft and a stag horn ferrule. H. 4 ¾" x 3 ½", O.L. 36 ¾"  
\$1,600-\$2,500



11.

12.

### 13. Ivory Erotic Cane

Ca. 1890-Ivory ball carved with two women engaged in an erotic embrace, short turned ivory stem with rope pattern collar, ebony shaft and a stag horn ferrule. French cane and endows it with an irresistible, tactile sensuality. H. 2 ½" x 2 ¼", O.L. 37 ¼"

**\$1,600-\$2,000**

### 14. Toledo Damascene Steel and Gold Dress Cane

Ca. 1880-Toledo damascene handle fashioned in an elongated and slightly tapering plain shape with a round top and encrusted with dense 24 karat gold wire inlay accordingly arranged in three horizontal registers with various panels of swirling floral trellises and trailing patterns including three characterizing chimeras within multiple framing borders. Let us safely assume that it was made by the grand master Placido Zuloaga from Eibar himself. Ebony shaft and a gilt metal ferrule. H. 4 ¾" x 1", O.L. 36 ½"

**\$1,200-\$1,600**

### 15. Ivory Cat Cane

Ca. 1900-Ivory pistol-grip handle carved with a sleeping cat, hammered silver collar with London hallmarks and an ebony shaft with stag horn ferrule. The portrait was probably inspired by the drawings of Louis Wain and comes in a cleft with framing jagged edges and a flowering twig on the side. H. 3 ½" x 2 ¾", O.L. 40"

**\$1,000-\$1,500**

15.



13.

14.





### 16. Art Deco Hard Stone Dress Cane

Ca. 1920-Plain rock crystal knob and its enameled silver collar on a deep black ebony shaft with metal ferrule. The knob is cut in a reversed tear drop and is perfectly polished to emphasize the limpidity of the natural stone. French. H. 2" x 1 1/4", O.L. 38"

**\$1,200-\$1,600**

### 17. Ivory Nude Cane

19th Century-Seated nude study carved of a single piece of fine grained ivory, silver ferrule, ebony shaft and a stag horn ferrule. The bashful figure was obviously granted the attention and skill that an artist gives to a selected creation and is imbued with great sensitivity. Irresistible, tactile sensuality. H. 4 3/4" x 2", O.L. 39 1/2"

**\$3,000-\$5,000**



16.



17.

18.

## 18. Figural Hard Stone Dress Cane

Viennese, Ca. 1890-Smoky quartz French Bulldog head with large and upright, bat-like ears and flat muzzle. The portrait is well rendered and benefits of an alluded hairy coat on a frosted surface as well as a pair of inset emerald, round cabochons eyes. Green stained paper washer shaft stiffened with a metal rod core and fitted with a well chased and gilt collar and a steel ferrule. This one-of-a-kind cane is in the Fabergé Russian Style and belongs to the upscale jewelry Objects of Virtue. It comes from Ulrich Klever's cane collection and is illustrated in his first book "Spazierstöcke" published in the Heine Verlag 1984, on one of the few color plates page 39, where he ascribes it to Fabergé workshops. H. 2 ½" x 1 ¾", O.L. 35 ½"

**\$3,000-\$4,000**



19.

## 19. Ivory Nude Cane

Ca. 1900-Ivory handle with an uncovered woman standing on a stepped plinth terminating with an integral twist rope ring, Malacca shaft and a stag horn ferrule. Reverently reproducing the classic shape of the Venus. Superb quality and in flawless condition. H. 7 ¼" x 1 ½", O.L. 40"

**\$1,800-\$2,500**







20.

## 20. Chinese Export Silver Dragon Cane

Ca. 1900-Silver handle hand chased and engraved with two intertwined dragons on its long stem and a third one on the ball knob. The encircling fabled animals, with scaled reptilian bodies, mighty paws and strong claws, have the usual large and frightening heads with horns. The handle with a calligraphic "Fu" inscription on the top conveying wishes of good luck and long life comes on a flamed tropical wood shaft and matching silver ferrule. Absolute top rate collectable and in an untouched, mint and original condition. H. 8 ¼" x 1 ½", O.L. 38 ¼"

**\$1,000-\$1,500**

## 21. Ivory Erotic Cane

Circa 1890-Very unique ivory ball knob carved in low relief with an erotic motif. The vintage depiction is in the taste of the days of yore, and, in the best Victorian tradition, makes you stare and simultaneously leaves something for the imagination. The knob exudes a charm of its own and comes with its turned ivory collar and an ebony shaft with a stag horn ferrule. H. 2 ½" x 2", O.L. 38"

**\$1,200-\$1,800**

## 22. Meissen Porcelain Cane

19th Century-Straight white porcelain handle decorated in cobalt blue with the classic, "Zwiebelmuster" Onion Pattern, ebony shaft with a gilt collar and a brass ferrule. This German handle is authenticated with the two crossed swords of the famous porcelain manufacture Meissen. H 3" x ½", O.L. 36 ¾"

**\$500-\$700**



21.

22.



### 23. Art Nouveau Ivory Cane

Ca. 1890-L-shaped ivory handle with a woman's face framed by its curvaceous hair festooned with flowers, malacca shaft with a turned ivory joining collar and long ivory ferrule. Matching faded surface to the shaft. H. 5 ½" x 3 ½", O.L. 33 ½"

**\$2,000-\$3,000**

**24.**

### 24. Silver and Ivory Art Nouveau Dress Cane

Ca. 1900-Elegantly fashioned L-shaped handle featuring a silver part well modeled and finely hand chased with different Art Nouveau floral on each side fitted with a plain ivory hand rest fashioned of the tip of an elephant tusk. Stepped partridge shaft with secured natural shrinkage and a metal ferrule. H. 4 ¼" x 2 ½", O.L. 38"

**\$600-\$800**



### 25. Spectacular Cabinets of Curiosities Cane

Ca. 1870-This cane features a primate's skull as the handle and a shaft made of the vertebrae of a reptile's spine with longer and joining bone segments between the skull and the shaft and shaft and the horn ferrule. This highly collectable natural history and hardly encountered cane is contemporary to Charles Darwin and his assumptions of natural selection. Notable is the spring fastened and moving lower jaw. H. 4" x 4 ¾", O.L. 37 ½"

**\$4,000-\$6,000**

**23.**



**25.**







**26.**

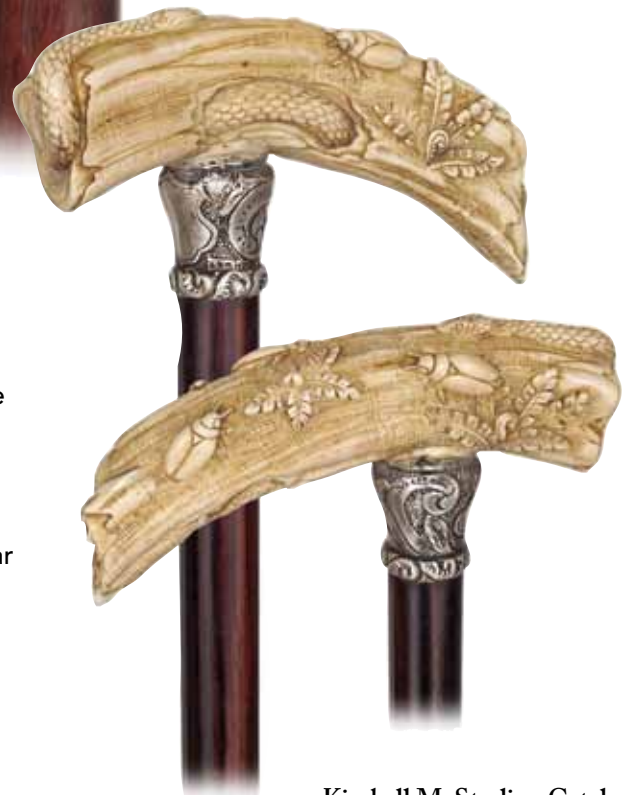
## **26. Hard Stone Figural Cane**

Ca. 1900-Single piece jasper knob cut in the shape of an upright French Bulldog head. The portrait takes advantage of the naturally mottled colors of the stone as well as a frosted surface with a finely engraved fur to increase the visual appeal, and two inset crystal eyes add interest and liveliness to the dog's rendering. The handle comes with an engine turned and gilt collar in the taste of "Cazal" Paris and a well figured snake wood shaft with a horn ferrule. Better than the best, this cane is a one-of-a-kind work of art where function meets beauty. It is an accomplished example of very desirable and exceedingly rare type of canes, which came into fashion with the impact of Carl Fabergé and given more exclusivity by a pristine condition. any collection, as advanced as it can be. H. 3 ½" x 2", O.L. 37 ½"  
**\$4,000-\$5,000**

**27.**

## **27. Warthog Ivory Figural Cane**

Ca. 1900-Large warthog tooth well carved with a snake crawling out of its hole, three beetles-like insects and three fern, chased silver collar, rosewood shaft and a stag horn ferrule.-The handle takes full advantage of the natural curving of the material and a remarkable sculptural appeal endorsed by the right amount of wear and a superb lustrous surface. H. 5 ¾" x 2 ¼", 36 ¼"  
**\$1,000-\$1,500**



### 28. Ivory Dog Head Cane

Ca. 1900-Sizeable Sheppard Dog head carved in dark and naturally mottled horn, matching rosewood shaft with a plain metal collar and a horn ferrule. A combination of quality, condition and color makes of this day cane a first rate collectable. H. 3 ½" x 3", O.L. 37 ¼"

**\$900-\$1,200**

### 29. Ivory Religious Cane

Ca. 1840-The single ivory piece handle is turned in a straight shape with integral flattened top and ring collar and engraved on its elongated cylindrical body with what seems to be the "Anointment of Paulus". The continuous scene displays a lively and minutely detailed carving and shows Jesus facing Paulus leaning on his pastoral staff against a background with a house and water mill on the side of a small river. H. 3 ½" x 1 ½", O.L. 35"

**\$1,800-\$2,500**

### 30. Noble Man's Maltese Order Cane

Ca. 1850-Ebony knob fashioned in a basic octagonal faceted Milord shape and elaborately decorated with mother of pearl, rosewood and ivory inlay in a repeating pattern on the side and a Maltese Cross on the top, malacca shaft and a brass ferrule. H. 2 ¼" x 2", O.L. 35"

**\$1,200-\$1,800**

28.



29.



30.





31.



### 31. Porcelain Indoor Cane

Circa 1890-Long cylindrical porcelain handle finely painted with a gallant scene framed by rich gold moriage on a pale purple background. The porcelain part is complimented with a substantial gilt knob and matching collar both hand chased in the Revival taste and a flamed lemonwood with a metal ferrule. Fine and beautiful French porcelain art and with the entire fin de siècle splendor. H. 7 ¼" x 1 ½", O.L. 38 ½"

**\$800-\$1,000**

32.



### 32. Erotic Ivory Ball Cane

Ca. 1880-This is the very best carving that we have seen in this style. The two very daring and vibrant scenes within sphere are expertly deep and lace-like carved with extraordinary facial expressions and body language. The hinge is very good and tight on this example with a knobby blackthorn branch and a white metal collar and ferrule. So far, so good, however, what makes this cane more special is the ribbed surface and character lines of the ivory knob which give it the appearance of a giant clam and the shaved knobs on the shaft and their darker cores which bring to mind feminine breasts and nipples. This is probably the reason why the previous owner always proudly referred to it as the "The Garden of Earthly Delights".H. 2 ¼" diameter, O.L. 36 ½"

**\$5,000-\$7,000**

### 33. Figural Hard Stone Dress Cane

Viennese, Ca. 1890-Smoke quartz cat head with braided silver wire collar and rosewood shaft with a horn ferrule. The feline character takes advantage of the frosted surface with polished nose and ear tips, and two inset dark red ruby eyes add interest and liveliness to the cat's rendering. This one-of-a-kind cane is in the Fabergé Russian Style and belongs to the upscale jewelry Objects of Virtue. H. 2 ¼" x 2 ¼", O.L. 38 ¾"

**\$6,000-\$8,000**

**33.**



**34.**

### 34. Erotic Ivory Cane

Ca. 1880-Unique ivory ball knob carved with three erotic scenes in heart shaped framing. The very daring scenes within the sphere are expertly carved with extraordinary facial expressions and body language in an incredible miniature. They make you stare, explore and fantasize! Faux sprig blackthorn shaft fitted with a silver collar and a worn metal ferrule. H. 2" x 2", O.L. 33 ½"

**\$4,000-\$5,000**





### 35. Porcelain Indoor Cane

Ca. 1820-Larger porcelain classic pommel shaped knob hand painted and decorated in the Baroque taste and embellished with rich gold morriage. Malacca shaft and a 3 1/4" tall horn ferrule. The knob, with all the translucency qualities of porcelain, gets it just right with the blue and white. Possibly Meissen. H. 1 4 3/4" x 1 1/2", O.L. 34"

**\$1,000-\$1,500**

### 36. Ivory Erotic Cane

Ca. 1900-The ivory handle is fashioned to depict an erected male organ with a woman engaged in an erotic embrace with two men. The handle, with a winning combination of sculptural shape and micro carving, comes with its turned ivory collar ending in a twist rope ring and a coco palm tree wood shaft and a metal ferrule. H. 4 1/2" x 1 3/4", O.L. 35 1/4"

**\$1,200-\$1,800**

### 37. Ivory Vintner Cane

19th Century-Ivory ball knob finely carved with three vines with vine leaves and grapes grown around a wine casket. Oak branch shaft freed from its bark with a personalized white metal collar and ferrule. The story that has been passed along with this cane is that it belonged to an immigrated German vintner who was very active in Napa Valley and nicknamed "The Gadding Vine". It came in private hands in the early 1940s and remained in the same West Coast wine and cane lover family assets for over 70 years. H. 2 1/4" x 2", O.L. 34"

**\$1,500-\$2,000**





### 38. Heliotrope Dress Cane

Ca. 1900-Straight heliotrope handle of the desirable deep green tint with striking and natural varicolored inclusions. Ebony shaft with white metal collar and a horn ferrule. High end dress cane. H. 2 ¾" x 1", O.L. 37 ½"

**\$400-\$500**

38.



### 39. Ivory Ball and Claw Cane

Ca. 1870-One-of-a-kind ivory ball and eagle claw cane in giant size and quality, ebony shaft with a plain turned ivory collar ring and a stag horn ferrule. It has an expertly secured crack and boasts a glorious and luminous surface. H. 7 ½" x 2 ½", O.L. 37 ½"

**\$1,200-\$1,800**

39.



### 40. Large Ivory Rabbit Cane

London Hallmarks 1908-A wonderful example of the much admired horizontal English ivory rabbit's head with furry coat and backwards extending long ears, malacca shaft and a brass ferrule. H. 4 ¾" x 1 ¾", O.L. 37"

**\$2,000-\$2,800**



### 41. Hippo Ivory Rabbit Cane

Ca. 1850-A nicely carved rabbit with a glass eye, hippo handle, small ivory collar, mallaca shaft and a metal ferule. H. 4 ½" x 1 ¼", O.L. 33"

**\$600-\$800**

40.



41.





42.

#### 42. Marquetry Flick Stick

Ca. 1870-An interesting inlaid oak one piece shaft with a 3 3/4" flick blade, various nut and fruitwood inlay and a copper ferrule. O.L 35 1/2"

**\$1,000-\$1,200**



43.

#### 43. Chinese Cloisonné Dress Cane

Ca. 1890-A generously decorated handle with flowers and roundels, rosewood shaft and a horn ferrule. H. 3 1/2" x 1 5/8", O.L. 36 3/4"

**\$800-\$1,000**



45.

#### 44. German Porcelain Dress Cane

Ca. 1860-A high quality porcelain handle with a hand painted couple atop and flowers on the sides, gold ring collar, exotic wood shaft and a brass and iron ferrule. H. 2 1/2" x 1 1/2", O.L. 35 3/4"

**\$900-\$1,100**



44.

#### 45. Segmented Horn Country Cane

Ca. 1880-A stacked version of this American cane with alternating horn and ivory, sand cast copper ornament atop, and a brass bullet collar. O.L. 32 1/2"

**\$250-\$350**

46.

#### 46. Smokey Quartz Dress Cane

Ca. 1900-A fully faceted estimated 40 plus karat topaz with a signed 14kt draped bezel handle which is signed 14 karat, approximately 2 or 3 oz. of gold. When you look down and through the stone on the inside of the rim there are strange little symbols going completely around ending with the word help, maybe a ritual cane but truly an object of virtue. H. 2 1/2" x 3", O.L. 36"

**\$3,000-\$4,000**

#### 47. Japanese Hippo Ivory Cane

Ca. 1875-A master Japanese carved handle with various animals in natural poses, 1" silver collar, triangular rosewood shaft and a metal ferrule. H. 8" x 1 1/4", O.L. 35 1/2"

**\$2,500-\$3,500**

48.

#### 48. Brigg Dress Cane

Ca. 1900-A bamboo root cane, signed Briggs-London, signed 12 karat gold collar and a copper ferrule. O.L. 38"

**\$300-\$400**



47.





51.



50.

### 49. Porcelain and Bone Dress Cane

Ca. 1885-Hand painted Chinese knob, ornate gold-filled collar, spiral bone collar extension, ebony shaft and a brass ferrule. H. 1 1/2" x 5", O.L. 35"

**\$600-\$800**

### 50. Odd Fellows Presentation Cane

Ca. 1900-An ornate gold-filled presentation dress cane, thick ebony shaft and a metal ferrule. H. 1 5/8" x 2 1/2", O.L. 37"

**\$350-\$450**

### 51. Blow Gun Gadget Cane

Ca. 1870-A breach-loading French pin fire .30 cal., nice working condition, exotic hardwood shaft and a removable ferrule which doubles as a cocking device. O.L. 35"

**\$4,000-\$5,000**

### 52. Gold Capped Folk Snake Cane

Dated 1847-An unusual formal country cane with a gold inscribed handle, vine wrapped twigspr snake shaft and a 3 1/2" ferrule. H. 1 1/2" x 1 1/2", O.L. 38"

**\$500-\$700**



49.



52.

### 53. English Skull Cane

Ca. 1860-An elephant ivory handle with very proportionate carvings and undercuts, canes of this quality are often linked to the 19th Century Free Masons, honey malacca shaft , very ornate gold-filled collar and a 2 ½" horn ferrule. H. 3" x 3", O.L. 34 ¼"

**\$2,500-\$3,500**

### 54. American Patriotic Cane

Early 20th Century-The handle has a superb crest showing an eagle with wide open wings flanked with American flags on both sides, turquoise and white decoration which is wrapped in silver filigree, ebonized shaft and a metal ferrule. H. 1 ¾" x 1 ½", O.L. 34 ¾"

**\$600-\$700**

### 55. Rhino Horn Dress Cane

Ca. 1880-A beautiful light to dark colored one piece cane that has been sculpted to present a Briar appearance, elegant gold collar and a 2" gold gilt ferrule. O.L. 35"

**\$3,000-\$4,000**

54.



53.



55.



56.



## 56. Anti-Clergy Cane

Ca. 1880-Masterfully carved fruitwood knob depicting an evil cleric( a dog satire) in all of his glory, probably French, ebonized shaft, gilt collar and a horn ferrule. H. 4" x 2 1/2", O.L. 35" **\$1,000-\$1,200**

## 57. Horse Measure Cane

Ca. 1900-A genuine horse trader's measure cane with working level and bras attachments, a bark covered natural branch shaft and a brass ferrule. O.L. 38" **\$250-\$350**

58.



## 58. Ivory Fist Cane

Ca. 1885-A carved ivory fist holding an egg with nice detail on fingers and nails, a pair of ivory striations, small ivory collar, exotic wood shaft and an ivory ferrule. H. 1 3/4" x 2 1/4", O.L. 37" **\$650-\$800**

57.



## 59. Ivory Mermaid Cane

Early 20th Century-A bare breasted carved ivory mermaid, hallmarked British coin silver collar, honey malacca shaft and a brass ferrule. H. 2" x 2 1/2", O.L. 36 1/2" **\$700-\$900**

59.



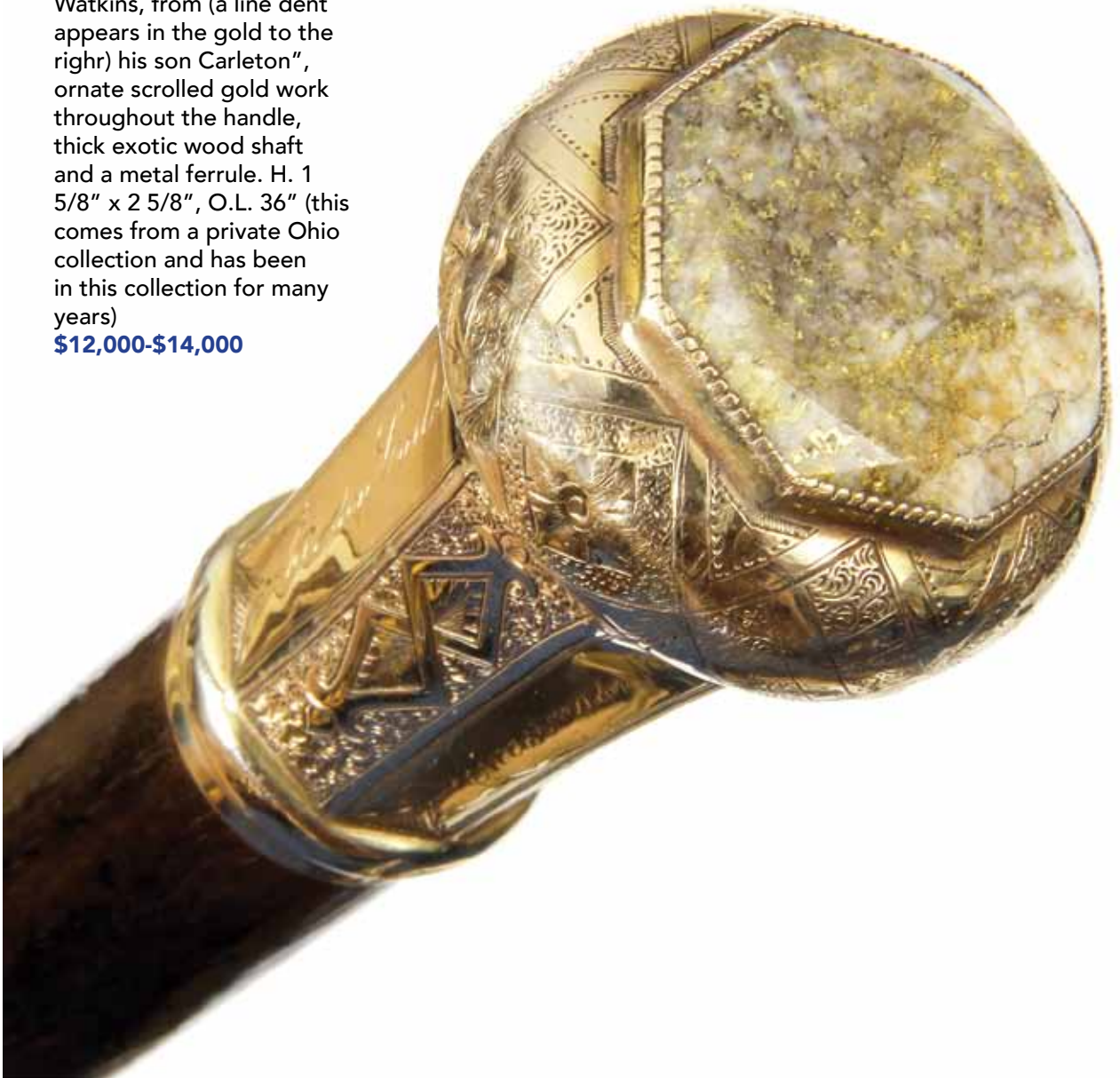
60.

## 60. Gold Quartz

### Dress Cane

Date 1869-A substantial gold quartz atop a 14kt gold handle with a presentation "Christmas 1869, J. M. Watkins, from (a line dent appears in the gold to the right) his son Carleton", ornate scrolled gold work throughout the handle, thick exotic wood shaft and a metal ferrule. H. 1 5/8" x 2 5/8", O.L. 36" (this comes from a private Ohio collection and has been in this collection for many years)

**\$12,000-\$14,000**





61.

### 61. Ivory Hunting Dog Cane

Early 20th Century-A fully carved handle with two dogs playing, sterling collar, honey malacca shaft and a 2" brass ferrule. H. 5" x 1 3/4", O.L. 36 1/2"  
**\$1,100-\$1,200**



62.

### 62. Nautical Whalebone Cane

Ca. 1865-A pommel handle with a coin silver medallion atop with the name P. Cooper, 7/8" whalebone shaft and no ferrule. H. 1 5/8" x 2 1/4", O.L. 35"  
**\$1,300-\$1,500**

63.

### 63. Ivory Flapper Cane

Ca. 1900-A carved ivory Art Deco lady with curls and hat, gold metal collar, ebonized shaft and an ivory ferrule. H. 2" x 1 3/4", O.L. 36"  
**\$500-\$600**



64.

### 64. Horn and Gold-filled Dress Cane

Ca. 1870-A Victorian horn dress cane with an ornate end cap and collar, exotic wood shaft and a 3 1/2" brass ferrule. H. 5" x 5", O.L. 36"  
**\$400-\$500**



65.

### 65. Ivory Bulldog Cane

Ca. 1890-A carved ivory bulldog with two color glass eyes, signed sterling collar, exotic wood shaft and a long ferrule. H. 2" x 1 1/2", O.L. 35 3/4"  
**\$450-\$550**

### 66. Candle System Cane

Late 19th Century-A hinged top and pushup candle mechanism, match holder, exotic wood shaft and a brass ferrule. H. 4" x 1 1/4", O.L. 35"

**\$500-\$600**

### 67. Sterling Art Nouveau Nude Cane

20th Century-A heavy cast sterling handle with the British hallmarks "K. C." (Keith Cowey), a custom English cane maker who is now deceased and whose work is often sought after, exotic wood shaft and a brass ferrule. H. 5" x 2 1/4", O.L. 36"

**\$550-\$650**

### 68. Jade Waterfowl Dress Cane

Early 20th Century-A carved hardstone handle with two color glass eyes, precise attention paid to the carving of the head feathers, ornate gold metal collar, ebony shaft and a horn ferrule. H. 3" x 2 5/8", O.L. 36"

**\$1,500-\$2,500**

### 69. Victorian Ivory Flower Cane

Ca. 1875-An ornate carved handle with roses, grapes and other flowers, ivory band collar, exotic wood shaft and an ivory ferrule. H. 1 7/8" x 5", O.L. 35 3/4"

**\$600-\$900**

### 70. Ivory St. Bernard Cane

Ca. 1875-"Arthur Emory's" Arthur Emory's St. Bernard ivory cane with glass eyes, inscribed cane, signed ornate sterling collar, exotic wood shaft and a brass ferrule. H. 4 1/2" x 1 1/2", O.L. 36"

**\$500-\$800**

68.

67.

69.

66.

70.





71.



### 71. Figural Marine Cane

Ca. 1850-Sperm whale tooth handle carved to depict a cachalot, hardwood shaft totally decorated with engraved waves and a metal ferrule. A grown age patina. H. 4 1/2" x 2", O.L. 35 1/4"

**\$1,400-\$1,800**

72.



### 72. Mother of Pearl and Silver Dress Cane

Ca. 1880-Substantial mother-of-pearl handle of a beautiful, stretching, oval and tapering shape delicately engraved with flowering twigs and terminating on one side by an oval silver knob hand chased and engraved with flowers and on the other with a matching silver collar. Dark coco palm tree wood shaft and a metal ferrule. H. 8" x 1 3/4", O.L. 38 1/4"

**\$800-\$1,000**

73.



### 73. Whale Tooth Penguin Nautical Cane

Ca. 1860-A wonderful nautical which includes a large figural whale's tooth handle and turned plinth, malacca shaft and a metal ferrule. Extremely rare in the marine repertoire in very fine condition and with a gentle, age grown patina. H. 5 3/4" x 2", O.L. 38 1/4"

**\$1,800-\$2,500**

#### 74. Tortoiseshell Cane

Ca. 1900-Very large and plain tortoiseshell crook handle on snake wood shaft with silver collar and a horn ferrule. The cane was obviously used over a longer period and shows some wear but still radiates all the magic of the noble material of the sea and above all quality. H. 5  $\frac{3}{4}$ " x 3  $\frac{3}{4}$ ", O.L. 36"  
**\$800-\$1,000**



74.

#### 75. Norwegian Shark Spine Cane

Ca. 1890-Stag horn handle carved with a hunting dog on a shaft made of shark vertebrae washers piled on a steel core with a wide silver collar engraved "Anton Johansen /Lynstad" and a brass ferrule. H. 4  $\frac{1}{2}$ " x 1  $\frac{1}{2}$ ", O.L. 32  $\frac{3}{4}$ "  
**\$700-\$900**

#### 76. Ivory Russian Portrait Cane

Ca. 1890-Ivory Nobleman's bust knob, slim turned multiple ring collar, ebony shaft and a stag horn ferrule. Highest quality micro detailed carving and in mint condition. Deserves some academic research for exact identification. H.2" x 2", O.L. 37  $\frac{1}{4}$ "  
**\$900-\$1,200**



76.



75.



77.

### 77. Hard Stone Ball knob

20th Century-Rarely encountered Pierta Paesina ball knob with a "Queen Crown" white metal collar, well figured rosewood shaft and a matching horn ferrule. H. 2 1/4" x 1 3/4", O.L. 37 3/4"

**\$300-\$400**

### 78. Ivory Three Stallion Heads Cane

London, dated 1918-Large ivory handle carved with three stallion heads beside one another, well dressed full bark malacca shaft with an ivory ferrule and silver collar with foliate scrolls and later engraved presentation. H. 5" x 2", O.L. 38"

**\$1,200-\$1,800**

### 79. Silver Dress Cane

Ca. 1880-Well-proportioned and large silver crook handle hand chased and engraved with various oak leaves and laurel panels, ebony shaft and a metal ferrule. Top rate German quality, authenticated by a full set of clear hallmarks and as fresh as on its first day. H. 4 1/4" x 3 3/4", O.L. 35 1/4"

**\$800-\$1,000**



79.



78.



### 80. Ivory and Rhino Horn Turf Cane

Ca. 1900-Milord ivory knob turned in a well-proportioned, plain and stretching shape and set at the top with a rhino horn roundel carved with a stallion's head. Dark rosewood shaft and a stag horn ferrule. Classy in every way this cane exudes style and a universal timeless character. Mint condition. H. 2 ¼" x 1", O.L. 37 ½"

**\$800-\$1,000**

**81.**

### 81. Ivory Horse Head Cane

Ca. 1910-An ivory horse head with two inset large and dark glass eyes and a 14 karat bridal, rosewood shaft and a stag horn ferrule.-The horse is a symbol of physical energies or controlled vitality and represents speed, grace and nobility. H. 4" x 1 ½", O.L. 36 ¼"

**\$1,200-\$1,600**

### 82. Porcelain Dress Cane

Ca. 1900-Finely chased and gilt ball knob on a porcelain stem painted in bright colors after a Far Eastern cloisonné pattern. Rosewood shaft carved with a twist and fitted with a metal ferrule. Hardly encountered if not one-of-a-kind cane and in top, original condition. H. 3" x 1 ¼", O.L. 36"

**\$600-\$800**

**80.**

**82.**





**83.**

### **83. Anglo-American Folk Art Cane**

Ca. 1830-The smooth and slightly tapering shaft is topped by a plain turned hardwood knob and decorated in pen work technique with, what seems to be, the story of a man's life. The evolution is shown on 12 successive registers. There is something new to see in it every day. H. 1 ½" x 2", O.L. 34 ½"

**\$2,000-\$3,000**

### **84. Ivory Hand and Ball Cane**

Ca. 1880-Classic ivory hand and ball knob on a tapering turned, long plain plinth, white metal collar, ebony shaft and a stag horn ferrule. The carving is strong and full of expression and graded by wear, color and character lines. H. 5" x 2 ¼", O.L. 38"

**\$600-\$900**

### **85. Viennese Porcelain Mildly Erotic Cane**

Late 19th Century-The famous mildly erotic motif of Leda & Swan in white porcelain with blue and red highlighted eyes and lips and 824 embossed manufacturing serial number on a stepped malacca shaft with a silver wrap collar and a metal ferrule. Most likely Augarten manufacture. H. 4 1/4" x 2 ¾", O.L. 35 1/2"

**\$700-\$1,200**



**84.**



**85.**

### 86. Ivory Bedouin Head Cane

Ca. 1880-The substantial ivory knob is carved to represent the head of a Bedouin with a bearded face and traditional head gear which consists of the kaffiyeh-cloth and 'agal-rope that constitute his proper attire and lends him the unmistakable identity of an Arab nomad from the Middle East. Malacca shaft with a 1 ¾ in. high, cylindrical and plain silver collar and totally worn out ferrule. A similar cane can be seen on the "The Mandel Cane Collection" by Youssef Kadri, pages 64 to 67. H. 3 ½" x 2 ½", O.L. 35"

**\$1,500-\$2,500**

### 87. Horn Elephants Cane

Ca. 1900-Dark buffalo crook handle carved with two elephant heads against one another, filigree silver collar, ebony shaft and a horn ferrule. The very fine carving is done in low relief with the comfort of the cane's wearer in mind and its naturalistic rendering is emphasized by two striking pairs of inset ivory tusks. Quality cane and well conserved.-Provenance: Richard Sawade, wild animal tamer and circus director. H. 5" x 4 ½", O.L. 35 ¾"

**\$1,500-\$2,000**

### 88. Ivory Fist & Snake Cane

19th Century-Vertical left fist clenching a snake, ebony shaft and a stag horn ferrule. Elaborate carving in fine detail and with great scales and forked tongue to the reptile. H. 5" x 2", O.L. 39 ¼"

**\$1,500-\$2,000**

86.



88.



87.







89.

### 89. Horn Dog Cane

Early 1900s-Horizontal black horn handle carved with a retriever in a set stance, ebony shaft with a horn ferrule and a plain Sterling silver collar with English hallmarks. The carving is fine and detailed and with many undercuts. -H. 4 1/4" x 1 1/2", O.L. 36 1/4"

**\$600-\$800**

### 90. Ivory Elephant Cane

Ca. 1880-Longer ivory handle carved to depict an elephant head against a tree trunk, ebony shaft and a stag horn ferrule. Rarely encountered beautiful depiction and embellished by an inset silver collar. H. 4 1/4" x 2 1/4", O.L. 37 3/4"

**\$1,800-\$2,500**



90.

### 91. Classic Hard Stone Dress Cane

Early 1900s-Stretching and plain Milord rose quartz handle with the desirable natural and intense pink color, cocobolo shaft with a plain silver collar and a horn ferrule. Possibly French. H. 2 3/4" x 1 1/4", O.L. 37 1/2"

**\$400-\$600**

91.



### 92. Ivory Figural Cane

19th Century-Well carved ivory portrait of a bold headed man with a smiling face and sideburns with color highlights, ebony shaft and a stag horn ferrule. Anglo-Saxon high-end quality carving and perfectly conserved. H. 2 ¼" x 2", O.L. 35 ½"  
**\$1,200-\$1,800**

### 93. Silver Dress Cane

Ca. 1890-Substantial L-shaped silver handle with a slightly arched and pointed hand rest totally hand chased and engraved with Baroque foliate scrolls and personalized with feathery initials "BJ" on an oval cartouche, ebony shaft and a horn ferrule. Austro-Hungarian hallmarks. H. 4" x 2 ¾", O.L. 36"  
**\$400-\$500**

### 94. Ivory Satirical Monkey Cane

Ca. 1890-Ivory handle carved to depict a humanized monkey head with bonnet and feather, well chased silver collar with obscured Birmingham hallmarks, coco palm tree wood shaft and a metal ferrule. A stunned facial expression as well as a striking dark pair of inset glass eyes and bonnet with spectacles lend the primate a likeable and amusing expression. H. 3 ¼" x 2", O.L. 36 ½"  
**\$1,600-\$2,500**



93.

94.



92.



97.



### 95. Ivory Cats Cane

Chester 1897-Straight walrus ivory handle carved with three cats in a cleft with jagged edges, finely engraved silver collar with Chester hallmarks 1897, ebony shaft and a metal ferrule. Charm is the trademark of this cane which was probably inspired by the drawings of Louis Wain, and the passage of time it had endured adds to its magic. H. 4 1/4" x 1 1/2", O.L. 34 3/4"

\$800-\$1,200

### 96. Oryx Horn Cane

Ca. 1880-Fashioned of a straight and smooth shaved Oryx horn and fitted with a hardwood cap handle. The surface shows the fibrous structure of horn and a uniform dark color with a pale stripe close to the handle and another towards the bottom. H. 2 1/2" x 2", O.L. 33"

\$600-\$800

### 97. Figural Ivory Day Cane

Ca. 1920-Ivory handle fashioned of a single piece in a basic Opera shape on a rosewood shaft with a stag horn ferrule and silver collar with obscured London hallmarks. The well-proportioned handle is plain on one side and carved with a hunting dog and flowers on the other. Superb quality and intact. H. 4 3/4" x 1 3/4", O.L. 36 1/2"

\$900-\$1,200

96.



95.





### 98. Ivory and Bone Dandy Cane

Ca. 1900-All ivory and bone cane fashioned in the shape of a Whangee bamboo culm with short nodes with an integral root bulb as knob and a metal ferrule. H. 3 1/2" x 1 1/4", O.L. 35 3/4"

**\$500-\$700**

### 99. Excessively Rare Baleen and Walrus Ivory Marine Cane

Ca. 1850-Walrus ivory pistol shaped handle on a substantial, one piece baleen shaft with a metal ferrule. The plain and slightly tapering shaft itself shows the specific layered structure of the noble material of the ocean and its dark color with coveted brown-greenish hues. H. 3 1/2" x 1 1/2", O.L. 33 3/4"

**\$800-\$1,200**

### 100. Rhino Hide and Silver Cane

Ca. 1900-L-shaped silver handle with knobby shoulder and obscured hallmarks, shorter shaft made of a single piece of dried and plain turned rhinoceros hide. Possibly English. H. 3" x 2", O.L. 29 3/4"

**\$400-\$600**



98.



99.

100.



### 101. Figural Day Cane

Ca. 1880-Well carved boxwood monkey's head with two large and inset glass eyes, fine grained rosewood shaft with a horn ferrule and a silver collar engraved "JACKO and ECC". Possibly French and with the right and ennobling feel of age. H. 1 ¾" x 1 ¾", O.L. 36"

**\$400-\$600**

### 102. Ivory Lion Cane

Ca. 1880-L-shaped ivory handle carved in the taste of the Roman statuary with a large lion mask and Vitruvian scrolls. Malacca shaft with a metal collar and an ivory ferrule. H. 6" x 4 ¾", O.L. 34 ¼"

**\$800-\$1,200**

### 103. Ottoman Enamel Cane

Ca. 1850-Metal knob fashioned in a classic pommel shape embellished with champlevé enamel and personalized with an inset round, also enamel, initials shield at the top, holly wood shaft and a metal ferrule. Similar pieces in the treasures of the Istanbul's Topkapı Palace or Serial which was the primary residence of the Ottoman sultans for approximately 400 years. H. 2" x 1 ¼", O.L. 33 ¼"

**\$600-\$900**

101.



103.

102.



### 104. Ivory Rabbit Cane

Ca. 1890-Large ivory handle carved to depict a sweeping rabbit with inset glass eyes and a rodent between its back paws, ebony shaft and a horn ferrule. Very decorative English cane and fits well in the wearer's hand. H. 4 1/4" x 2 1/2", O.L. 36 3/4"

**\$1,200-\$1,600**

### 105. Saint Cloud Porcelain Knob

Ca. 1750-Early porcelain knob modeled in a formal, slightly stretching pommel shape and round top, decorated a la Berain in cobalt blue with two encircling flower panels of Far-Eastern inspiration on the side and a radiating bloom on the top.. The knob withstood the test of time intact and with its entire glaze while the malacca shaft and its metal ferrule matured with a great feel of age and matching dark patina. H. 1 3/4" x 1 1/4", O.L. 35"

**\$1,800-\$2,800**

### 106. Anglo-Indian Ivory Cane

Ca. 1850-Substantial, phallic shaped ivory handle carved with stylized floral, malacca shaft and a stag horn ferrule. Fashioned in accordance with the social and aesthetic rules of the day, this cane is a symbol of power and fertility. H. 5 3/4" x 1 1/4", O.L. 35 3/4"

**\$600-\$800**

**106.**



**105.**



**104.**





107.

### 107. Silver Dog Cane

Ca. 1920-Cast silver long haired dog head with a long and plain silver collar, ebonized hardwood shaft and a brass ferrule. H. 4" x 3 1/4", O.L. 36"

**\$300-\$500**

### 108. Asian Ivory Cane

Ca. 1900-Very tall and tapering diamond shaped ivory handle carved with a flower panel, ebony shaft with a "Nickel Silver" collar and a stag horn ferrule. The intricate carving is unimaginably deep and done in a breath taking micro detail. H. 9 1/2" x 1 1/2", O.L. 38 1/4"

**\$600-\$800**

### 109. Rock Crystal Dress Cane

Ca. 1900-Straight and tapering rock crystal handle with a fascinating natural structure, well figured rosewood shaft with an Art Nouveau white metal collar and a horn ferrule. H. 2 1/2" x 1", O.L. 36 1/4"

**\$400-\$500**

109.



108.



### 110. Miner "Bergbarte" Axe Cane

Ca. 1880-Saxon miner's axe cane with a typically shaped metal handle decorated with miner's motifs partly highlighted with golden paint, angular-oval and tapering, ebonized hardwood shaft with a matching and flush set metal ferrule.

H. 4 ½" x 4 ¼", O.L. 37

**\$400-\$600**

### 111. Ivory Dogs Cane

Ca. 1890-L-Shaped hippopotamus ivory handle with rounded edges carved with two dog heads, fruitwood shaft with a white metal collar and a brass ferrule. H.

3 ¾" x 2, O.L. 35 ½"

**\$500-\$700**

### 112. Two Miner "Steigerhäckchen" Axe Canes

Ca. 1900-Saxon miner's axe cane with an ax shaped steel handle decorated with trailing geometrical motifs, wide angular-oval and tapering oak shaft and a matching steel ferrule with a pointed tip. Better traditional parade cane from the Erzgebirge, a region whose name literally means 'ore mountains', Czech Republic. -H. 5 ¼" x 2", O.L. 36 ¾"-Another Saxon miner's axe cane with a plain ax shaped steel handle featuring a pointed tip and wider shovel-like back anchored with two integral and longer tongue-like attachments on a linear tapering oval oak shaft with a 4" tall steel ferrule. H. 6 ¼" x 3 ½", O.L. 40"

**\$400-\$600 Together**

**112.**

**110.**



**111.**





113.

### 113. Ivory Turf Cane

19th Century-Stretching urn shaped ivory handle with a horse head in a horse shoe within two beaded friezes, matching silver collar with obscured London hallmarks, dark rosewood shaft and a stag horn ferrule. H. 4 ½" x 1 ¼", O.L. 36 ¾"

**\$700-\$900**

### 114. Silver Art Nouveau Dress Cane

Ca. 1900-Large modified opera shaped silver handle hand chased and engraved with a different Art Nouveau flowing floral panel on each side, hardwood shaft, possibly boxwood, with a white metal collar and ferrule. The handle is engraved with feathery initials and struck with clear, classic German silver hallmarks. H. 4 ¾" x 3 ¼", O.L. 35"

**\$400-\$500**

### 115. Ivory Erotic Cane

19th Century-Ivory knob fashioned in the stylized shape suggesting the leg of a woman with bent knee, garter and stockings, malacca shaft with ivory eyelets and braided dark silk loop with tassel and an ivory ferrule. "Turkish Delight". H. 2 ¾" x 2 ¼", O.L. 37 ½"

**\$700-\$900**

115.



114.





### 116. Hard Stone Dress Cane

Ca. 1920-Sizeable tiger eye knob fashioned in an elongated, plain and tapering Milord shape, well figured rosewood shaft with a plain metal collar and a horn ferrule. H. 3 ¼" x 1 ¼", O.L. 38 ¼"

**\$500-\$700**

### 117. Mildly Erotic Stag Horn Handle

Ca. 1890-Stag horn handle fashioned in a stylized erected male organ and carved with a bird on a twig in a large oval shield. Ebony shaft with a plain metal collar stamped "GOLDIN" and stag horn ferrule. Romantic relic of the prude old days embellished by a luminous and glazed surface. H. 5 ¾" x 1 ½", O.L. 38 ½"

**\$400-\$600**

### 118. Silver Dress Cane

Ca. 1900-Elegant Opera shaped silver handle with a pointed and down curving nose, ebony shaft and a horn ferrule. The handle of a pleasing, slightly angular cut is richly hand chased and engraved with laurel and foliage as well as acanthus ornament and struck with obscured German hallmarks as well as a "620" manufacturing number. H. 4 ¾" x 3", O.L. 36 ¾"

**\$300-\$400**

116.



118.



117.





119.

121.



120.



122.



### 119. Anglo-Colonial Souvenir Cane

Dated January 1st, 1896-Substantial ivory handle carved on the top and in high relief "Souvenir Mayumba J.W.C.Africa January 1st, 1896" and decorated on the sides with etched leaves. Malacca shaft with a white metal collar and a metal ferrule. H. 4 ½" x 1 ½", O.L. 35 ½"

**\$600-\$900**

### 120. Silver Day Cane

Ca. 1910-L-shaped silver handle with a hammered surface, plain partridge shaft and a metal ferrule. The handle is struck with the national silver Reichsmark of a crescent moon & crown representing the entire German state in conjunction with an "800" decimal silver standard marks as well as an unidentified maker's mark. H. 4" x 2 ¼", O.L. 31 ¾"

**\$300-\$400**

### 121. Ivory Revival Cane

First half of the 19th Century-Fairly large ivory knob carved with individual character portraits of four men and the one of a donkey all in identical Gothic and framing arcades bundling at the top with scrolling leafage centered by an acanthus shield.. Most likely French. H. 2 ¼" x 1 ½", O.L. 34 ½"

**\$700-\$900**

### 122. Tropical wood Figural Handle

Ca. 1920-Very large greenish tropical wood handle carved on one side with an alert wild animal concentrating on a prey and instantly ready to launch the hunt and on the other with the leaf of a tree. The wild animal, possibly a tiger has ebony shaft with a brass ferrule and silver collar with Birmingham hallmarks. H. 4 ¾" x 2 ½", O.L. 37 ½"

**\$500-\$600**

### 123. Warthog Ivory Figural Cane

Ca. 1900-Large warthog tooth carved with an alligator, rosewood shaft with a chased silver collar and a stag horn ferrule. H. 5" x 2", O.L. 37 3/4"  
\$1,000-\$1,500



123.

### 124. Turf Day Cane

Ca. 1870-Siam horn handle carved as a horse leg with ivory hoof and gilt nails, chased white metal collar, malacca shaft and a stag horn ferrule. Well proportioned. H. 4 1/2" x 1 1/2", O.L. 38"  
\$500-\$700



127.

### 125. Dieppe Ivory Badine

19th Century-Long ivory handle delicately carved in high relief with, what seems to be, an allegory of the summer. One can see wheat spikes, flying birds and flower garlands among other decorative elements on its longer vertical stem and a bunch of wheat spikes on the square-octagonal top. Rosewood shaft with an ivory ferrule. H. 5 3/4" x 1 1/2", O.L. 36 1/2"  
\$500-\$700



125.



### 126. Whimsical Frog Cane

Ca. 1920-Rosewood handle carved as a Lady frog with cape and crossed hands, large green glass eyes, rosewood shaft, silver collar and a horn ferrule. H. 4" x 2 1/4", O.L. 37 1/4"  
\$400-\$500



126.

### 127. Ivory Nobleman's Cane

Ca. 1900-Milord ivory knob turned in a well-proportioned, plain and stretching shape and carved at the top with an "Adelskrone", ebony shaft and a brass ferrule. H. 2" x 1", O.L. 35 1/2"  
\$400-\$500



124.





128.



130.

### 128. Classic Hard Stone Dress Cane

Early 1910s-Stretching and plain agate handle of a desirable foggy structure and mottled grey-brown color, rosewood shaft with an Art Nouveau white metal collar and a stag horn ferrule. Possibly French. H. 2 ¾" x 1", O.L. 37 ½"  
\$300-\$400

### 129. Ivory Thanksgiving Mascot Cane

Ca. 1890-Rounded ivory knob with an encircling ring of various fruits and vegetables and a four leafed clover, well dressed malacca shaft and an ivory ferrule. Excellent quality and great condition. H. 2 ¼" x 2", O.L. 37 ¼"  
\$400-\$600

129.



### 130. Silver and Gold Dress Cane

Ca. 1870-Substantial silver knob delicately hand chased and engraved in high relief with a dove among rich scrolls and flowers and personalized with 18 karat yellow gold initials "AR" applied at the top. Rosewood shaft with two silver eyelets and a metal ferrule. H. 2 ¼" x 1 ½", O.L. 34"  
\$500-\$700

131.



### 131. Ivory Day Cane

Ca. 1890-Long ivory handle carved on one side with a beautiful flowering twig, coco palm tree wood with an Art Nouveau silver collar and a metal ferrule. H. 5 ½" x 1 ½", O.L. 37 ¼"  
\$400-\$600



132.



### 132. Folk Art Naughty Leg Cane

Ca. 1880-Boxwood leg with boots emphasized with brass nails and black color, full bark malacca shaft with a silver collar and a metal ferrule. Victorian, mildly erotic collectable in a so-far unseen substantial size and emphasized with a well-used surface and a superb, age patina. H. 5 ½" x 3 ¼", O.L. 35 ¾"  
\$400-\$600

### 133. Revival Ivory Cane

Ca. 1910-Ivory Pharaoh Bust handle on a longer knobbed stem with ebony dot inlay on an ebony shaft with a horn ferrule. Anglo-Egyptian cane from the Revival period. H. 6  $\frac{3}{4}$ " x 1  $\frac{1}{4}$ ", O.L. 37  $\frac{1}{4}$ "

**\$400-\$500**

### 134. Naughty Leg Cane

Ca. 1890-A very heavy silver plated handle, modeled and cast in a basic L-shape to depict a lady's leg with Victorian buttoned boot. Hardwood shaft and a metal ferrule. A Knobkerrie, also called life preserve or bludgeon. H. 4  $\frac{1}{2}$ " x 2", O.L. 37"

**\$500-\$700**

### 135. Japanese Export Walrus Ivory Cane

Meiji Ca. 1880-A large walrus ivory handle with birds and rats among flowering branches, malacca shaft and a bone ferrule. H. 8  $\frac{1}{2}$ " x  $\frac{3}{4}$ ", O.L. 39"

**\$400-\$500**

### 136. Hard Stone Dress Cane

Ca. 1900-Natural grey agate handle fashioned in an elongated, straight and fluting shape with a plain white metal collar, ebony shaft and a horn ferrule. H. 3" x 1  $\frac{1}{4}$ ", O.L. 38  $\frac{1}{2}$ "

**\$400-\$500**

### 137. Ivory Revival Cane

Ca. 1890-Straight ivory handle carved in the Middle Age style with two portraits against one another. French. H. 3  $\frac{1}{4}$ " x 1  $\frac{1}{4}$ ", O.L. 38  $\frac{1}{4}$ "

**\$800-\$1,000**

**133.**



**134.**



**136.**



**135.**



**137.**



139.



141.



140.



138.



142.

### 138. Figural Silver Cane

Ca. 1900-Modified Opera shaped silver handle with a longer cylindrical stem hand chased and engraved with, what seems to be, ethnic and traditional Babylonian scenes. Ebony shaft and a matching, 2 1/2" long silver ferrule. Anglo-Persian. H. 3 3/4" x 4 1/2", O.L. 37"

**\$400-\$600**

### 139. Decorative Ivory Cane

Ca. 1890-Straight ivory handle carved with a walnut on an integral and tapering plinth in the shape of a branch with two large leaves. Ebony shaft with turned ivory collar and an ivory ferrule. manliest nuts. H. 2 3/4" x 1 1/4", O.L. 37"

**\$400-\$500**

### 140. Feminine Silver Dress Cane

Ca. 1890-Well shaped silver "Bec de Corbin" crook handle profusely chased with laurel, ebony shaft with a horn ferrule. French . H. 2 1/4" x 2", O.L. 35 1/2"

**\$200-\$300**

### 141. Ivory Day Cane

Ca. 1880-Ivory knob carved with three street musicians, malacca shaft with a plain silver collar and a stag horn ferrule. The "STERLING SILVER" hallmark on the collar hints to an American origin. H. 2" x 1 3/4", O.L. 38 1/4"

**\$700-\$900**

### 142. Ebony and Ivory Art Deco Dress Cane

Ca. 1895-Ebony and ivory handle carved with two nudes on a longer, plinth collar, ebony shaft and a 2 1/4" ivory ferrule. Directly linked to the rich and distinctive heritage of the Wiener Werkstätte. Viennese Art Deco. H. 3 1/2" x 1 1/2", OL. 38 1/4"

**\$300-\$500**



**143. Early Figural Ivory Cane**

Ca. 1780-L-shaped walrus ivory handle carved with a dog head at the front, malacca shaft and a brass ferrule. H. 3 1/4" x 1 3/4", O.L. 29 3/4"  
\$600-\$800

**144. Figural Day Cane**

Ca. 1880-Gilt metal knob well-modeled cast and chased to depict the head of a crying child with heavy tear drops in the eyes. The integral, angular and tapering plinth of the knob has a German engraving "Mein liebes Herzblatt" which translates "My darling sweetheart". Rosewood shaft and a horn ferrule. H. 4" x 2", O.L. 36 1/2"  
\$400-\$700

**145. Ivory Bedouin Head Cane**

Ca. 1880-The ivory knob is carved to represent the head of a Bedouin with a bearded face and traditional head gear. This rarely encountered iconic portrait knob galvanizes all the elements of quality and comes with its pepper bamboo shaft and a metal ferrule. H. 2 3/4" x 2", O.L. 34"  
\$600-\$800

**146. Makhilla Cane**

French, Basque Region-Woven leather handle with horn knob and brass collar, swiveling hanger and braided loop, scarred branch shaft with long brass ferrule and cross shaped steel tip. The handle unscrews to reveal a redoubtable steel spike. H. 8 1/4" x 2", O.L. 34 1/4"  
\$300-\$500

**147. Figural Ivory Day Cane**

Ca. 1900-Pistol shaped ivory handle carved with an upright bear leaning on a dried tree trunk, metal collar, ebony shaft and a stag horn ferrule. H. 4 3/4" x 1 3/4", O.L. 36 1/2"  
\$400-\$600





148.

### 148. Stag Horn Hunting Cane

Ca. 1890-Straight stag horn handle carved with a running stag, malacca shaft with brass collar and a metal ferrule. Rich patina. H. 5 1/2" x 1 1/2", O.L. 33 1/2"

**\$300-\$400**

150.



### 149. Capital Boar Trophy Cane

Ca. 1890-Silver handle with a giant pair of wild hog tusks, coco palm wood shaft and a brass ferrule. Possibly American. 4 3/4" x 4 1/2", O.L. 36 1/2"

**\$200-\$300**

151.



### 150. Decorative Day Cane

European late 19th Century-Bone and horn handle topped by a prone wooden rabbit, flamed rosewood shaft with metal collar and a bone ferrule. H. 4 3/4" x 1 3/4", O.L. 35 1/4"

**\$300-\$400**

149.



### 151. American Wild West Cane

19th Century-Ebony and ivory handle inspired by a revolver grip, hardwood shaft with a metal collar and missing ferrule. Rarely encountered cane with few dents in keeping with the age and the merits of a well-used surface. H. 5 1/4" x 3 3/4", O.L. 37 3/4"

**\$300-\$400**

152.



### 152. Horn Dress Cane

Ca. 1920-A segmented horn crutch handle cane with a metal ferrule. H. 5" x 4", O.L. 37"

**\$300-\$500**



**153. Staghorn Dress Cane**

Ca. 1880-A carved elk antler which depicts the head of an elk as the thumb rest and long horns atop the handle, ornate sterling collar with two high relief elk heads, honey malacca shaft and a horn ferrule. H. 5 ½" x 3 ¼", O.L. 37"  
**\$400-\$600**

**153.****154. Flop Eared Rabbit Cane**

Ca. 1900-A carved bone rabbit with two color glass eyes, 1 ¼" oak shaft and a metal ferrule. H. 3" x 2", O.L. 3"  
**\$500-\$600**

**158.****155. Ivory Dress Cane**

Ca. 1865-Carved ivory floral handle, exotic wood shaft and a horn ferrule. H. 3 ¾" x 1 ¾", O.L. 36"  
**\$300-\$500**

**156.****156. Silver/Snake Day Cane**

Ca. 1900-An everyday oak cane with a silver end cap, a silver snake collar and a metal ferrule. O.L. 35"  
**\$250-\$350**

**157. Silver Lion Cane**

Early 20th Century-A cast silver lion with two color glass eyes, ebony shaft and a horn ferrule. H. 1 ¼" x 1 ½", O.L. 36"  
**\$250-\$350**

**154.****158. Ivory Dragon Cane**

Early 20th Century-A fossilized ivory handle, dragon with two color glass eyes, ornate gold-filled collar, bamboo shaft and a metal ferrule. H. 2 ½" x 1 ½", O.L. 35"  
**\$300-\$400**

**157.****155.**





159.



160.



161.



164.



163.



162.

### 159. Ivory Dress Cane

Ca. 1860-An unusual ivory handle with a spiral carving, silver metal collar, oak shaft and a 2" ivory ferrule. H. 1 ½" x 2", O.L. 35"  
\$300-\$500

### 160. Porcelain Dress Cane

Ca. 1885-A cobalt and white porcelain handle with a hand painted lady, ornate gold-filled collar, exotic wood shaft and a horn ferrule. H. 4 ½" x 1 ½", O.L. 36"  
\$400-\$500

### 161. Ivory Dress Cane

Ca. 1890-Carved ivory handle with a blank cartouche, silver metal collar, hardwood shaft and a metal ferrule. H. 5" x 1 ¾", O.L. 36"  
\$350-\$450

### 162. Ivory Noah Face Cane

Ca. 1890-A carved ivory Japanese handle, ornate silver collar, thick malacca shaft and a horn ferrule. H. 2 ½" x 3 ½", O.L. 36"  
\$500-\$600

### 163. Walrus Ivory Eskimo Cane

Ca. 1910-A unique carving of a dog sled with three dogs, hammered silver metal collar, exotic wood shaft and a horn ferrule. H. 4" x 1 ½", O.L. 35"  
\$400-\$600

### 164. Ivory and Silver Dress Cane

Ca. 1880-Carved ivory handle with an ornate silver end cap which is signed sterling, British hallmarked silver collar, ebony shaft and a horn ferrule. H. 3 ½" x 1", O.L. 35"  
\$300-\$400

**165. Gold and Ivory Dress Cane**

Ca. 1900-A crook handle marked 14K gold with a matching ivory insert, a very formal and unusual cane, malacca shaft and a horn ferrule. H. 4" x 3", O.L. 35"  
**\$800-\$1,200**



165.

**166. Beetle Man Dress Cane**

Ca. 1900-A cast silver-plate handle of an ugly face with a beetle atop biting him between his eyebrows, hardwood shaft and a horn ferrule. H. 2 1/4" x 2", O.L. 33"  
**\$300-\$400**



166.

**167. Porcelain Dress Cane**

Ca. 1880-A painted porcelain handle with four cherubs playing and swinging, gold and silver metal collars, ebonized shaft and a metal ferrule. H. 1 3/4" x 6", O.L. 36"  
**\$400-\$500**



167.

**168. Ivory Snake Cane**

Ca. 1900-Carved ivory snake resting in branches of a tree, exotic wood collar and a horn ferrule. H. 3" x 1 1/2", O.L. 35"  
**\$250-\$350**



168.

**169. Blue Hard Stone Dress Cane**

Ca. 1920-A nice fluted silver metal collar, exotic wood shaft and a horn ferrule. H. 1 3/4" x 1 3/4", O.L. 35 1/2"  
**\$300-\$400**

169.



170.

**170. Briar Dress Cane**

Ca. 1900-A carved wood handle, gold collar, malacca shaft and a horn ferrule. H. 1 1/4" x 1 1/2", O.L. 36"  
**\$250-\$300**





171.



174.

172.



### 171. Silver Nude Dress Cane

Ca. 1900-Three heavy nude ladies holding hands and dancing in a circle, thick exotic wood shaft and a horn ferrule.  
H. 1 1/4" x 2 1/4"

**\$350-\$500**

### 172. Horn Dress Cane

Dated 1876-A carved buffalo horn handle, a silver collar, commemorating the U.S. Centennial, hardwood shaft and a 3" metal ferrule. H. 1 1/2" x 3 1/4", O.L. 33"

**\$300-\$500**

### 173. Bronze Cavalier Cane

Early 20th Century-A cast bronze handle, belt buckle horn and ivory collar, ebony shaft and a horn ferrule. H. 3" x 7/8", O.L. 34"

**\$300-\$400**



173.



175.



176.

### 174. Bone Pony Dress Cane

Ca. 1875-A two piece bone handle with a high relief carved pony, hardwood shaft and a brass ferrule. H. 3 1/2" x 5 1/4", O.L. 35 1/2"

**\$300-\$400**

### 175. Bronze Bird Cane

Ca. 1925-A cast bronze handle which doubles as a weapon, ebony shaft and a metal ferrule. H. 3 1/2" x 2 1/4", O.L. 36"

**\$250-\$350**

### 176. Pair of Bone Dress Canes

Late 19th Century-Average length 35"

**\$200-\$300**



**177. Stag Sword Cane**

Ca. 1880-Stag handle, ornate silver metal collar, push button locking mechanism, 19" blade, bamboo shaft and a 3" pike ferruled. H. 4" x 2", O.L. 36 1/2"

**\$800-\$1,000**

**178. Stag Arab Cane**

Ca. 1890-A carved ivory handle with two color glass eyes, silver collar, stepped malacca shaft and a metal ferrule. H. 4 1/2" x 2", O.L. 36"

**\$400-\$500**

**179. Tortoise Elephant Cane**

Late 19th Century-An unusual cane with a tortoise elephant head with ivory tusks, silver metal collar, thick tortoise shell shaft in nice condition and an ivory ferrule. H. 4" x 2", O.L. 33"

**\$2,000-\$2,500**

**180. Ivory and Skin Dress Cane**

Ca. 1900-A unique bird head which is covered in an exotic leather, with an ivory beak and two color glass eyes, large ivory collar, snakewood shaft and a horn ferrule. H. 3 1/2" x 3 1/2", O.L. 37"

**\$800-\$1,200**

**181. Contemporary Bone Dress Cane**

Ca. 1990-A nice modern carving of a bone hand resting on an egg, brass collar, mahogany shaft and a brass ferrule. H. 4" x 3 1/2", O.L. 36"

**\$200-\$300**



**179.**

**177.**



**181.**



**180.**

**178.**

182.



**182. Silver and Ivory Dress Cane**

Ca. 1890-A mixed handle with both silver and ivory with leaf decoration, ebony shaft and a brass ferrule. H. 6" x 1 5/8", O.L. 36"

**\$500-\$600**

183.



185.



**183. Nautical Tooth Cane**

Ca. 1865-A whale's tooth handle with a tortoise disc atop, horn and ivory spacer collars, pair of ivory eyelets, decorated exotic wood shaft with pearl and ivory and an ivory ferrule. H. 1 1/2" x 2 1/4", O.L. 36"

**\$400-\$500**

184.



**184. Alligator Folk Cane**

Ca. 1935-A one-piece carved orangewood Jacksonville gator cane with a horn ferrule. O.L. 36"

**\$200-\$300**

186.



**185. Trench Art Cane**

Ca. 1940-A large brass artillery shell, thick ebonized shaft and a brass 3" bullet ferrule. H. 5" x 1 1/2", O.L. 38"

**\$250-\$350**

**186. Whalebone Nautical Cane**

Ca. 1865-A whale's tooth handle with a baleen disc atop, hexagonal tooth collar, 3/4" whalebone shaft which is hexagonal to round and a brass ferrule. H. 1 3/8" x 1 7/8", O.L. 33"

**\$1,000-\$1,200**

**187. Mexican Folk Art Cane**

Ca. 1940-A carved and painted folk art cane with eagles and Aztec Indians, one piece hardwood shaft and a brass ferrule. O.L. 38"

**\$100-\$200**

**188. Gold and Ivory Dress Cane**

Ca. 1890-An ivory handle with a gold-filled end cap and an ornate gold-filled collar, probably an Olivewood shaft and a metal ferrule. H. 4" x 1 1/2", O.L. 36"

**\$300-\$450**

**189. Stag Santa Cane**

Late 20th Century-An unusual carved stag horn with "The Claws" himself, great detail has been paid to every aspect of this carving, signed sterling collar, 1 1/4" thick malacca shaft and an ivory ferrule. H. 4 1/2" x 1 1/2", O.L. 36"

**\$500-\$600**

**190. Ivory Elephant Cane**

Pre-Ban-A carved ivory elephant atop ivory rocks which is a post carving after the shaft which is dated 1864, ornate presentation collar, thick malacca shaft and a 2 3/4" pike ferrule. H. 2 1/2" x 1 1/2" x 3 1/2", O.L. 36"

**\$1,500-\$2,000**

**191. Ivory Frog Cane**

Ca. 1890-A carved ivory frog ready to jump on three beetles, nicely carved in high relief, ornate gold-filled collar, exotic wood shaft and a brass ferrule. H. 4 1/2" x 1 1/2", O.L. 36 1/2"

**\$500-\$700**







### 192. Ivory Knob Cane

Ca. 1840-A carved ivory knob, coin silver collar, thick malacca shaft and a 1 ½" brass ferrule. H. 1 ½" x 2", O.L. 36"  
**\$300-\$500**

### 193. Ivory Dolphin Cane

Pre-Ban-A carved ivory dolphin with glass eyes, ornate silver collar, exotic wood shaft and a brass ferrule. H. 3" x 2", O.L. 36"  
**\$800-\$1,000**

### 194. Ivory Eagle Cane

Ca. 1910-A carved walrus ivory eagle with two color glass eyes done in the style of the Nast eagle, large silver collar, thick malacca shaft and a 2" horn ferrule. H. 5" x 1 ¾", O.L. 37"  
**\$1,000-\$1,200**

### 195. Nautical Whalebone Cane

Ca. 1870-A carved naughty leg handle, wood spacers, ¾" whalebone shaft and no ferrule. H. 2 ¼" x 2", O.L. 34 ½"  
**\$600-\$800**

### 196. Ivory Lion Cane

Ca. 1900-A unique carved ivory handle with a lion thumb rest with two color glass eyes  
**\$1,500**

193.

192.

195.

194.

196.



### 197. Ivory Snake Cane

Early 20th Century-A unique carved snake which is entwined around a log, glass eye, very ornate gold-filled collar, exotic wood shaft and a 2" metal ferrule. H. 4 ½" x 1 ½", O.L. 36"

**\$900-\$1,200**



197.

### 198. Ivory Dragon Cane

Ivory Dragon Cane-Ca. 1890-A carved and signed ivory dragon handle, signed sterling collar, malacca shaft and metal ferrule. H. 4 ½" x 1 ½", O.L. 34 ½"

**\$700-\$800**



198.

### 199. Ivory Saloon Leg Cane

Early 20th Century-A carved ivory ladies leg with a silver tack shoe, signed sterling collar, stepped partrigewood shaft and a metal ferrule. H. 4 ¼" x 1", O.L. 35"

**\$600-\$800**



### 200. Japanese Erotic Carving

Pre-Ban-A nicely carved Japanese carving of a couple involved in love making, an interesting carving with inking, and is signed in Japanese characters on the bottom. H. 5" x 2 ¼" x 2 ¼"

**\$1,500-\$2,500**



200.





202.

### 201. Erotic Ivory Nude Cane

Ca. 1880-A nude which is wrapped in what appears to be leaves with flowing hair, ornate collar signed solid silver, exotic wood shaft and a metal ferrule. H. 4 1/2" x 1 1/2", O.L. 35"

**\$800-\$1,200**



201.

### 202. Ivory and Horn Bull Dog

Ca. 1910-A segmented horn handle with a horn bulldog which has ivory ears and an ivory nose, two color glass eyes, exotic wood faux bamboo shaft and a horn ferrule. H. 4" x 5", O.L. 36"

**\$200-\$300**



204.

### 203. Fist and Baton Ivory Nautical Cane

Ca. 1865-An early carved fist with a wood and ivory baton, ivory and wood spinning collars, hardwood shaft and never had a ferrule. H. 2 1/4" x 2 1/2", O.L. 34"

**\$350-\$450**



203.

### 204. Ivory Horse Cane

Ca. 1900-A carved ivory horse with two color glass eyes and India ink shaving, signed sterling collar, with an exotic six sided wood shaft and a horn ferrule. H. 4 3/4" x 1 1/2", O.L. 36"

**\$500-\$1,000**



205.

### 205. Gold Dress Cane

Ca. 1890-A large gold-filled handle which was a 15th anniversary presentation to "John D. Bunn, 50th Anniversary", the diameter of the handle is larger than a U.S. silver dollar, ebonized shaft and a horn ferrule. H. 2 1/4" x 2 1/2", O.L. 34"

**\$200-\$250**



**206. Silver Snake Cane**

Ca. 1880-A natural burl handle with a silver snake entwined throughout and the head of the snake is the end cap for the handle, silver metal collar, natural vine shaft and a metal ferrule.

O.L. 36 1/2"

**\$200-\$300**



**206.**

**207. Silver Courting Cane**

Ca. 1650-A high relief casting of a couple meeting, C scroll design which is typical of this era in Vienna marrying and cupid with his bow and arrow, exotic wood shaft, small split to the silver handle where it meets the shaft and a metal ferrule. H. 1" x 7 3/4", O.L. 38 3/4"

**\$600-\$1,000**



**207.**

**208. Stag horn Nude Cane**

Ca. 1910- Frontal nude atop the waist, probably a slave representation from a bygone era, silver metal collar, oak shaft and a metal ferrule. H. 1 1/4" x 4", O.L. 37 1/2"

**\$200-\$400**



**208.**

**209. Ivory Cat Cane**

Early 20th Century-A carved ivory massive cat handle done in great detail, hallmarked "W. N.", British collar, malacca shaft and a metal ferrule. H. 2" x 5 1/4", O.L. 35 3/4"

**\$1,000-\$1,500**



**209.**

**210. Gold Dress Cane**

Ca. 1910-A French hallmarked 18 karat gold collar and handle, hardwood shaft and a metal ferrule. H. 1 1/2" x 2 1/4", O.L. 36"

**\$500-\$700**



**210.**

**212.**



**211.**



**211. Gold-Filled Dress Cane**

Dated 1881-Engraved handle with a Christmas presentation, ebony shaft and a metal ferrule. H. 1 1/4" x 2", O.L. 35"

**\$200-\$300**

**212. Ivory Lady Cane**

Ca. 1890-An elegant carving of a young lady with inset eyes, ivory pearls in her Sunday finest, a pair of lanyard holes, thick ebony shaft and a metal ferrule. H. 1 1/2" x 3 1/4", O.L. 37 1/2"

**\$200-\$300**

**213.**

**213. Ivory Greyhound Cane**

Ca. 1900-A carved ivory handle with two color glass eyes, British Hallmarked coinsilver collar, ebony twigspur shaft with ivory inserts and a metal ferrule. H. 4 1/2" x 1 1/2", O.L. 36"

**\$1,100-\$1,200**

**215.**

**214. Ivory Dress Cane**

Ca. 1885-A carved ivory page boy, silver metal collar, thick malacca shaft and an ivory ferrule. H. 1 1/4" x 1 1/2", O.L. 36"

**\$300-\$500**

**215. Ivory Blackamor Cane**

Pre-Ban-A thick carved ivory handle, signed sterling collar, thick malacca shaft and a brass ferrule. H. 2 1/2" x 3 1/2", O.L. 36"

**\$500-\$700**



**214.**



### 216. Tortoise and Ivory Dress Cane

Early 20th Century-A carved ivory man with a silver top hat, silver metal bowtie collar, pair of coinsilver eyelets, tortoise shaft and a 2 ½" metal ferrule. H. 4" x 1 ¾", O.L. 35 ½"

**\$1,500-\$2,000**

### 217. Ivory Shakespearean Figure

Ca. 1860-Figure is 4 ½" x 1 ¼" x 1 ¼", stand is 2" tall

**\$300-\$500**

### 218. Ivory and Wood Gavel

Pre-Ban-Dated 1938-8 ½" x 3"

**\$100-\$200**

### 219. Russian Enamel Dagger Cane

Early 20th Century-A pink enamel and gold handle with seed pearls and a rosecut diamond atop, the center of the handle has much spider webbing and missing some enamel, 8" dagger with small blood groove, hardwood shaft and a gold-filled collar. H. 4 7/8" x ¾", O.L. 37"

**\$500-\$1,000**



217.



218.



216.



219.



**222.**



**220.**



**221.**

**224.**

**220. Victorian Gold Dress Cane**

Ca. 1865-A high relief cast gold-filled handle with various flowers and designs, ebony shaft and a metal ferrule. H. 3 1/2" x 1 1/2", O.L. 36"  
**\$200-\$300**

**221. Handsome Cab Whistle Cane**

Early 20th Century-"The Acme Sirene" patented brass handle in working order, ebony shaft and a horn ferrule. H. 2 5/8" x 1 1/2", O.L. 36"  
**\$300-\$500**

**222. Carved Parrot Cane**

Early 20th Century-A one piece carved parrot cane with two color glass eyes and a horn ferrule. O.L. 36"  
**\$300-\$500**

**223. Group Lot of Three Canes**

Ca. 1800-Two gold filled and one silver-Av. Length 36"  
**\$300-\$400**

**224. Silver Sword and Stag Horn Cane**

Ca. 1890-A stag which is overlaid with sterling silver handle, 20" four sided blade with push and pull mechanism, bamboo shaft and a metal ferrule. H. 2" x 5", O.L. 34 1/2"  
**\$400-\$700**



**223.**



**225. Gold Dress Cane**

Ca. 1900-A substantial gold filled handle with an Odd Fellows presentation, thick ebony shaft and a metal ferrule. H. 1 ¾" x 2", O.L. 36"

**\$200-\$300**

**226. Gold and Ivory Cherry Cane**

Ca. 1890-An ivory handle with a gold filled end cap with high relief cherries, ornate gold collar, oak shaft and a metal ferrule. H. 4 ½" x 1 ¾", O.L. 34 ½"

**\$300-\$500**

**227. Ivory Crook Handle**

Pre-Ban-A nice ivory crook, presentation gold filled collar, Malacca shaft and a horn ferrule. H. 4" x 3 ½", O.L. 5 ½"

**\$300-\$400**

**228. Ivory Dress Cane**

Ca. 1890-Large ivory handle, silver metal collar, exotic wood shaft and a stopper ferrule. H. 2 ¼" x 2 ½", O.L. 35"

**\$250-\$350**

**229. Lot of Three Ivory Canes**

Late 19th Century-Av. Length 36"

**\$300-\$500**



**227.**



**225.**



**226.**



**228.**



**229.**



**231.**

**232.**

### **230. Ivory Bull Dog Cane**

Ca. 1875-An ivory bull dog with two color glass eyes, gold metal collar, hardwood shaft and a metal ferrule. H. 1 ½" x 5", O.L. 39"

**\$350-\$550**



**230.**

**234.**

### **231. Ivory Lobster Claw Cane**

Ca. 1880-A carved life like lobster claw, small horn collar, exotic wood shaft and a brass ferrule. H. 3" x 1 ½", O.L. 34"

**\$400-\$600**



### **232. Ivory and Silver Dress Cane**

Ca. 1890-A unique silver and ivory Art Nouveau handle, twig spur shaft and no ferrule. H. 4 ½" x 2", O.L. 34"

**\$300-\$500**



**233.**

### **233. Silver Dress Cane**

Ca. 1910-A high relief silver handle, ebony shaft and a horn ferrule. H. 3 ½" x 3", O.L. 35 ½"

**\$250-\$400**



### **234. Ivory Parrot Cane**

Ca. 1900-A unique ivory carved parrot with two color glass eyes, looking down upon a small bumble bee, small silver collar, ebony shaft and a brass ferrule. H. 1" x 3 ¼", O.L. 36"

**\$500-\$600**



### 235. Sterling Dress Cane

Ca. 1900-A cast silver handle, ornate silver collar, hardwood shaft and a metal ferrule.  
H. 1 1/8" x 2", O.L. 35 1/2"

**\$250-\$400**

### 236. Ivory Dog Cane

Ca. 1900-A carved walrus ivory handle of a dog with two color glass eyes, brass collar, ebonized shaft and a brass ferrule.  
H. 4 1/2" x 1 1/2", O.L. 35"

**\$500-\$600**

### 237. Elephant Cigar Lighter

Ca. 1920-A unique 3 dimensional elephant match cane with striker, small ivory collar, lanyard eyelets, hardwood shaft and a horn ferrule, some repair to trunk of elephant. H. 3 1/2" x 2 1/2", O.L. 35 1/2"

**\$500-\$1,000**

### 238. Lot of 3 Ivory Canes-

19th Century-Av. 36"  
**\$300-\$500**



237.



235.



236.

238.





KIMBALL AND VICTORIA STERLING PRESENT A

# WINTER ANTIQUE CANE AUCTION



Kimball M. Sterling, Inc. (TFL-1915)  
125 West Market Street  
Johnson City, Tennessee 37604  
kimballsterling @ earthlink.net  
423.928.1471

Photography by James Price

Catalog Design by KT Design, LLC  
www.kristaft.com

© Copyright 2014 Kimball M. Sterling, Inc.

**www.AuctionAuction.com**