

SATURDAY,
APRIL 11TH
11:00 A.M.

KIMBALL AND VICTORIA STERLING PRESENT THE

HENRY FOSTER COLLECTION

CANE SHOWN IN ACTUAL SIZE.



I began collecting canes and walking sticks in 1972 when I bought, for \$700 at an auction in New York City, one lot consisting of 35 canes. I now had a collection and the objects piqued my interest to learn more about the canes I had just acquired. I began looking for canes, particularly ivory handled pieces, wherever I travelled. At antique shows, shops and auctions I purchased canes whenever I found them. To my eye, they were small, beautiful works of art.

At the time, I was the owner of a home heating oil business in Brooklyn and earning a good income. I was unmarried and the prices of canes were much lower then than they are today. Over the next 15 years I was able to purchase over 200 good quality ivory handled sticks. I met my wife to be, Margaret, in 1987. She loved the ivories but thought we had quite enough canes and I ceased my quest to further increase my collection. We were married in 1989 and the next year we sold the company and moved to Miami.

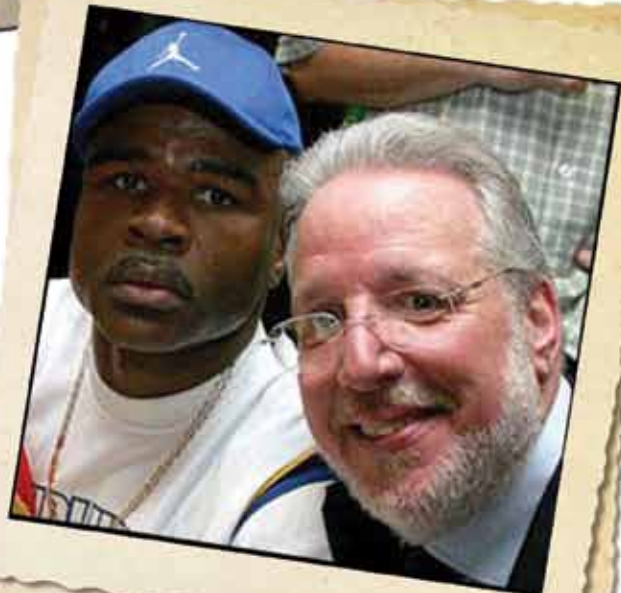
We bought a 4000 square foot home with lots of room to display our canes. I was a boxing manager and travelling internationally with my fighters. I began buying canes again around 1992 but limited my purchases to nauticals and elegant dress canes.

In 2012 I slowed down on my boxing business and had some health issues. We sold our home in Miami and relocated to a 1900 square foot house in Boca Raton, Florida. The canes went into storage. I contacted you and now you've got 546 canes of ours to sell for us.

It's difficult to let go of a collection assembled over almost 45 years, but all things must pass. I hope we get great prices and that the new owners appreciate these works of art as much as we did while acquiring and owning them.

Sincerely,
Henry Foster

Henry Foster with his World
Champion Glen Johnson



SATURDAY,
APRIL 11TH
11:00 A.M.

Preview
Saturday,
APRIL 11th
at 9:30 AM EST
Friday,
APRIL 10th
12:00-5:00 PM

Live on the internet at
LIVEAUCTIONEERS.COM
Two Time Winner of Best of Show
from the National
Auctioneers Association

Kimball M. Sterling Auction Gallery
125 West Market Street
Johnson City, Tennessee 37604
[kimballsterling @ earthlink.net](mailto:kimballsterling@earthlink.net)
423.928.1471



KIMBALL AND VICTORIA STERLING PRESENT THE

HENRY FOSTER COLLECTION

www.AuctionAuction.com



TERMS & CONDITIONS

1. Cash or check. A 20% buyers' premium will be added to the hammer price as part of the sale price for all bidders. Internet bidders will pay 23%. We reserved the right to hold purchases until the buyers checks clears if buyer is not known by us. Bank letter of credit is acceptable.

2. Mail or phone bids are accepted; the firm may require a deposit.

3. Kimball M. Sterling, Inc. has endeavored to catalog and describe the property correctly. All property is sold as is and neither the auction company nor the consignor will be responsible for descriptions, genuineness, provenance or condition of the property. No statement in the catalog made orally at the sale or otherwise shall be deemed to be a warranty, representation, or an assumption of liability.

4. In the event of any dispute between bidders, the auctioneer shall have total discretion to determine the successful bidder, in which his determination shall be final or to re-offer and resale the article in dispute. Title of the item or items purchased by the bidder will pass at the fall of the gavel and declaration of bidder. This is not an approval auction. All measurements are approximate.

5. Principal auctioneer: Kimball M. Sterling #2467. B. Elizabeth Sterling, auctioneer # 5757. Firm Kimball M Sterling Inc. TFL-1915

6. Bidders may bid live on the Internet by visiting <http://www.auctionauction.com>. You may also view the auction at this site and bid by phone.

7. Communications:
Telephone 423-928-1471.
Fax 423-928-2816.
Cellular 423-773-4073, 423-773-4072.
Email kimballsterling@earthlink.net

8. We do not ship protected items overseas but anything else will be shipped by the UPS Store in Johnson City. We can however hold your item till you or a friend visit's the USA and you can take your items as a personal item or we can ship to a friend in the USA.

9. Kimball M. Sterling, Inc. will not be held responsible for bids received on the day of the auction, unexecuted absentee bids, phone bidders not contacted or slow Internet bids. Although we do attempt to get all bids executed problems do occur. There will be no recourse from the bidder. We will not be responsible for items left on our location for over 30 days.

10. Sale will be conducted at 125 West Market Street, Johnson City, Tennessee. 37604. Announcements day of the sale take precedence over pre-sale advertising. Any litigation that pertains to this auction will be conducted in the county of Washington in Tennessee and is agreed upon by registering for this auction.

11. Airport is the Tri-Cities Airport, which is approximately 20 miles from the gallery. Internet catalog and live bidding available at www.auctionauction.com Best Western Hotel: 423-282-2126. A very fine hotel which offers Sterling Auction a discount rate is the Carnegie Hotel 1216 W State of Franklin Rd, (423) 979-6400.

12. Please call for condition report on sale lots or email us. We do send out multiple photos by email of any lot in the auction. By registering for this auction you accept the terms.

13. Parking service is free.



1. Important Narwhal Cane

Ca. 1820

A massive silver metal handle with florentine engraving, an important large handle, full narwhal shaft with no ferrule
H. 2 1/2" x 6 1/2", Diameter of shaft 1 1/2", O.L. 43 1/2"

\$7,000-\$10,000

2. Nautical Whalebone Cane

Ca. 1860

A small whale's tooth attached to a whalebone shaft and no ferrule
H. 3" x 5/8", O.L. 34"

\$500-\$700



3. Nautical Whalebone Cane

Ca. 1840

A carved whale's tooth "Turk's Knot" and rope handle, 1 1/4" whalebone shaft with cared eyelets, carved 6 sided shaft to the mid section then to a 4 sided shaft and no ferrule

H. 4" x 1 3/4", O.L. 36"

\$3,000-\$5,000

4. Whalebone Nautical Cane

Ca. 1870

A carved bone whale handle with two color glass eyes, nautical waxed knot collar, 7/8" diameter whalebone shaft and a small metal ferrule

H. 8 1/2" x 3", O.L. 36"

\$3,000-\$4,000

5. Nautical Whalebone Cane

Ca. 1860

A carved whale's tooth handle 3/4" diameter whalebone shaft and no ferrule

H. 1 1/4" x 1 3/4", O.L. 37"

\$500-\$800

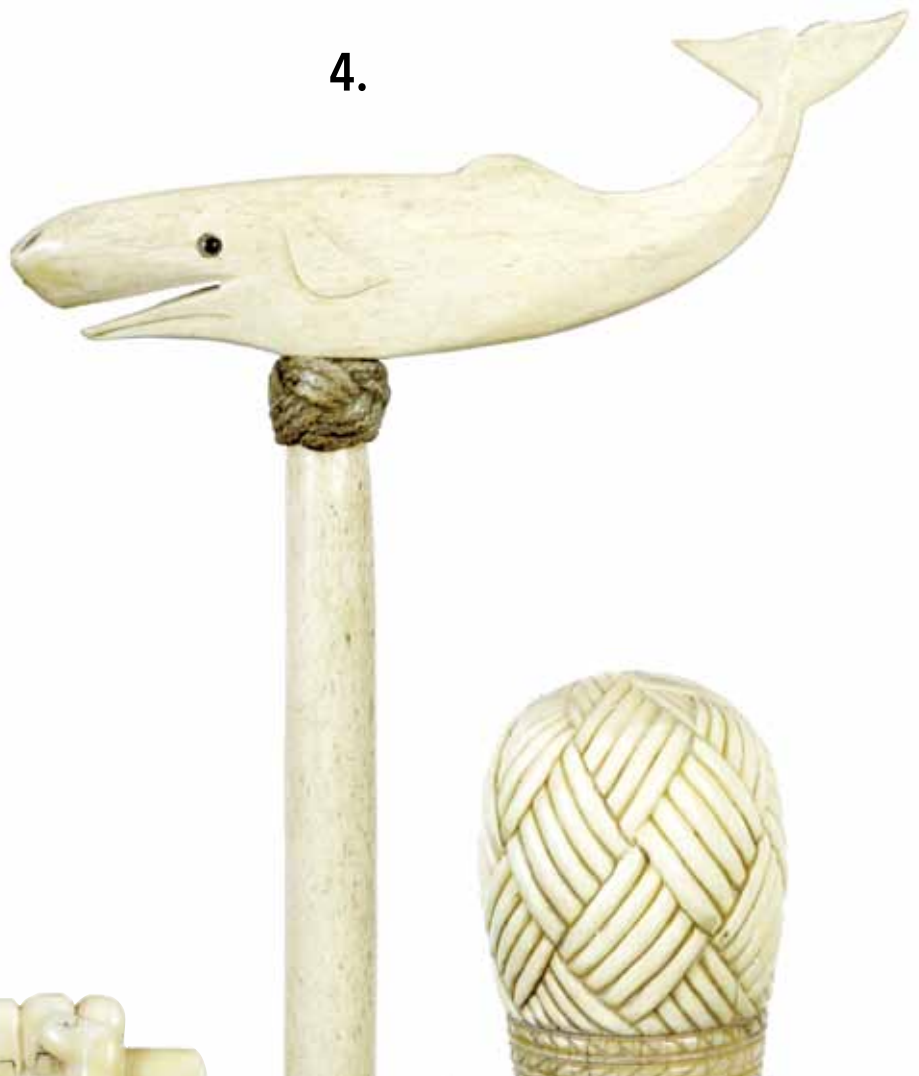
6. Nautical Whalebone Cane

Ca. 1850

A carved ivory hand and baton (whale's tooth), carved baleen collar, six sided to round shaft and no ferrule

H. 2 1/2" x 1 1/2", O.L. 34"

\$600-\$1,000



3.



5.



6.





7.

9.



8.



7. Whalebone Nautical Cane

Ca. 1850

A carved whale's tooth dog with baleen eyes, baleen ring collar, whalebone shaft which is 50% cross-hatched and a metal ferrule

H. 2" x 1 3/4", O.L. 34 1/2"

\$500-\$1,000

8. Nautical Whalebone Cane

Mid 19th Century

A carved walrus ivory handle with an exotic wood insert, baleen collar, 5/8" whalebone shaft and a copper ferrule

H. 4" x 1 1/4", O.L. 33"

\$500-\$700

9. Whalebone Nautical Cane

Dated 1842

A whale's tooth handle which is carved in the form of a Turk's knot, 1" diameter six sided to round whalebone shaft which is inked July 4th 1842 and a metal ferrule

H. 1 3/4" x 3", O.L. 33 7/8"

\$900-\$1,400

10. Architectural Whalebone Cane

Ca. 1840

A triple carved whale's tooth handle with a Federal coin silver shield atop, baleen spacer, 7/8" whalebone shaft which is 85% carved (two secured cracks in the handle and no ferrule)

H. 1 3/4" x 3", O.L. 36"

\$1,400-\$1,800

11. Nautical Whale's Tooth Cane

Ca. 1850

Whale's tooth handle, small baleen collar, smooth whalebone shaft and no ferrule

H. 3 1/2" x 1 1/2", O.L. 36"

\$600-\$900

12. Whalebone Dress Cane

Ca. 1840

A two piece crook handle whalebone shaft and handle with no ferrule

H. 4" x 5", O.L. 36"

\$600-\$900



12.

11.

10.



13. Architectural Whalebone Cane

Ca. 1840

Small whale's tooth handle fully carved
whalebone shaft with spirals, diamonds
and columns and no ferrule

H. 1 1/2" x 1", O.L. 36 1/2"

\$1,500-\$2,000

14. Nautical Fist Whalebone Cane

Ca. 1850

A whale's tooth handle carved in the
form of a clinched fist, the owner's name
which is unreadable to our eye is on the
wrist of the fist, exotic wood and baleen
spacers, 3/4" whalebone shaft and a
metal ferrule

H. 1 3/4" x 3", O.L. 34"

\$1,200-\$1,500

15. Nautical Whalebone Cane

Ca. 1840

A carved whalebone handle with an
abalone disc atop, inlaid abalone in the
3/4" whalebone shaft, pair of coin silver
diamond shaped eyelets, six sided to
round whalebone shaft and no ferrule

H. 1 1/4" x 3 1/2", O.L. 33 1/2"

\$700-\$1,100

16. Scrimshaw Whale's Tooth Cane

Ca. 1865

A whale's tooth handle which is probably
British with a young lady and a queen
figure carved in the handle, oval walnut
shaft and a horn ferrule

H. 4" x 1 3/8", O.L. 36"

\$700-\$1,100





18.

17.



17. Whale's Tooth Nautical Cane

Ca. 1850

A large carved whale's tooth handle, exotic wood and baleen spacers, a pair of whale ivory inserts, coin silver collar, cocoanut wood shaft and a 2 1/2" ferrule

H. 2" x 3", O.L. 38"

\$1,200-\$1,500

18. "Sulko" Dance Cane

Ca. 1920

A 14kt gold disk atop, square ebony shaft and a horn ferrule

O.L. 38"

\$200-\$300

19. Briar Wood and Rabbit Cane

Ca. 1860

A large natural grown handle with an ivory long haired rabbit, woven leather collar, 1" malacca shaft and a metal ferrule

H. 2" x 6 1/2", O.L. 37"

\$1,400-\$1,800



19.

20.



20. Horn Dress Cane

Ca. 1870

An American buffalo horn crook handle, unmarked silver ornate collar, snakewood shaft and a metal ferrule

H. 4" x 3", O.L. 36"

\$350-\$500

21. Silver Dress Cane

Late 19th Century

An ornate silver metal handle with fluted columns and drapes, hallmarked but unreadable except for the letters O X, 1" ebony shaft and a brass ferrule

H. 1 1/4" x 2 1/2", O.L. 34"

\$250-\$350



21.

22. Presidential Hickory Cane

Dated 1880

A Nashville presentation cane with a hickory shaft which was cut from a tree at the Hermitage, Andrew Jackson's home, presentation atop the silver handle and on three of the panels, 2" brass ferrule
H. 2" x 1 1/4", O.L. 34 1/2"

\$300-\$500

23. Horse Racing Cane

Early 20th Century

A signed 800 silver cast horse racing handle with saddle, hat, etc. in near mint condition, small silver collar, exotic wood shaft and a horn ferrule

H. 5" x 2 1/2", O.L. 36"

\$500-\$700

24. Silver Dress Cane

Ca. 1900

An unsigned silver handle in high relief which has various horse racing equipment and horses including helmets, saddles, exotic wood shaft and a horn ferrule

H. 1 1/4" x 1 1/2", O.L. 36"

\$250-\$350

25. Defensive/Sword Buffalo Cane

Ca. 1925

A heavy cast Cape buffalo, push and pull sword, small silver metal collar, exotic wood shaft and a horn ferrule

H. 5" x 2 1/2", O.L. 36"

\$300-\$500

26. Horn and Gold Dress Cane

Ca. 1880

An ornate 18 kt unsigned end cap with relief decorations, one piece blonde twigspur horn shaft and a metal ferrule

H. 4" x 3", O.L. 36"

\$500-\$1,000





27.



29.

28.



27. Silver and Horn Dress Cane

Ca. 1870

A crutch handle horn which an ornate silver end cap and overlay, silver metal ring collar, hardwood shaft and a metal ferrule

H. 5" x 6", O.L. 35 1/2"

\$300-\$500

28. Owl Dress Cane

20th Century

A signed sterling high relief owl with two color glass eyes, thick exotic wood shaft and a horn ferrule

H. 1 1/2" x 3 1/2", O.L. 36"

\$500-\$700

29. Niello Dress Cane

Ca. 1900

A well patterned handle, hallmarked but unreadable silver collar, exotic wood shaft and a horn ferrule

H. 3" x 2", O.L. 33"

\$200-\$300

30. Tiffany Sterling Dress Cane

Early 20th Century

An ornate signed Tiffany and Sterling handle which unscrews from the malacca shaft, "Tiffany & Co." and a horn ferrule

H. 1 1/4" x 1 1/4", O.L. 35"

\$600-\$1,000

31. Art Deco Sterling Dog Cane

Ca. 1920

A beautiful casting of a sterling Art Deco dog which also has the maker's mark A.W., exotic wood shaft and a horn ferrule

H. 4 1/2" x 5", O.L. 35"

\$700-\$1,000

30.



31.



32. Sword Cane

Ca. 1880

A bamboo sword cane with a pushbutton
13" worked blade, bamboo shaft and a
metal ferrule

H. 4" x 5", O.L. 35 1/2"

\$400-\$600

33. Snuff Box Cane

Ca. 1850

A burl handle which has a hinged
compartment which is lined in tortoise
shell, ornate gold metal collar, thick
malacca shaft and a metal and stopper
ferrule

H. 3 1/2" x 2", O.L. 38"

\$500-\$1,000

34. Hard Stone Dress Cane

Ca. 1910

A hard stone dress cane with two enamel
and silver collars (lower collar has some
enamel damage), bamboo shaft and no
ferrule

H. 7/8" x 2 3/4", O.L. 38"

\$350-\$500

35. Gnome Folk Cane

Ca. 1880

A carved bearded gentleman attached to a
malacca shaft and a horn ferrule

H. 3 1/2" x 3 3/4", O.L. 35"

\$250-\$350

36. Asian Silver Dress Cane

Ca. 1900

An Asian silver metal high relief handle,
ebonized shaft and a split metal ferrule

H. 8" x 1 1/2", O.L. 35 1/2"

\$300-\$400



37.



37. Picnic System Cane

Ca. 1850

Ornate silver metal handle which unscrews and the horn handle picnic set appears, the fork and knife are interlocking and fit the shaft perfectly, a very beautiful honey malacca shaft and a metal ferrule

H. 1 1/4" x 1 1/2", O.L. 35"

\$600-\$900

38. Japanese Country Cane

Ca. 1890

A natural one piece vine with a silver cartouche atop which has an engraved face, various bronze and silver rosettes along the top of the shaft and an iron ferrule

O.L. 35 1/4"

\$300-\$500

40.



39.



39. Telescope Dress Cane

Ca. 1900

An ornate silver metal crook handle which has a 3" 2 draw brass telescope, ebonized shaft and a horn ferrule

H. 5" x 4 1/2", O.L. 35 1/2"

\$500-\$600

40. Art Deco Silver Dress Cane

Ca. 1920

A stylized signed 900 silver dog crutch handle, small silver collar, ebony shaft and a horn ferrule

H. 4 1/2" x 4", O.L. 31"

\$600-\$900

38.



41.



41. Art Deco Silver Dog Cane

Ca. 1920

A signed sterling .925 Art Deco dress cane with unreadable maker's marks, exotic wood shaft and a horn ferrule

H. 4 1/2" x 4 1/2", O.L. 35"

\$600-\$900

42. Deco Dress Cane

Ca. 1930

A bakelite and leather crook handle, signed 14 kt gold collar, thick malacca shaft and a horn ferrule

H. 4 1/2" x 4 3/4", O.L. 36"

\$400-\$600

43. Hunting Stag Country Cane

Ca. 1860

A carved high relief stag handle with a hunting dog atop, copper collar, twig spur shaft and a metal ferrule

H. 4" x 1 1/2", O.L. 33"

\$350-\$450

44. Art Deco Dress Cane

Ca. 1920

An unusual Art Deco Cane which is marked 800 silver with a matching silver end cap and collar with three lapis stones, ebony shaft and a metal ferrule

H. 4 1/2" x 4 1/2", O.L. 36"

\$600-\$800

45. Whimsical Water Automation Cane

Late 19th Century

A carved hysterical man which is probably the devil himself, moveable protruding tongue, 30" brass cylinder with cork which would fill with water and with a flick of the wrist it would come out of the devil's mouth, bamboo shaft and no ferrule

H. 2 1/2" x 2 1/2", O.L. 36 1/2"

\$800-\$1,200



42.



43.



45.



44.

47.



46.



46. Panther Dress Cane

Ca. 1910

A stylized silver panther handle with unreadable hallmarks, exotic hardwood shaft and a metal ferrule

H. 5" x 4 1/2", O.L. 35"

\$600-\$900

47. Folk-Art Rabbit Cane

Ca. 1885

A very nicely carved one piece rabbit cane with two color glass eyes and a metal ferrule

H. 4" x 2 1/2", O.L. 37"

\$500-\$800

48. Horn Sword Cane

Ca. 1935

Carved horn handle, probably a monkey, 10 1/2" push-pull blade, segmented horn shaft and a metal ferrule

H. 4 1/2" x 3", O.L. 37"

\$400-\$600

50.



49. Folk-Art Lion Cane

Ca. 1880

A large carved lion with two color glass eyes, 90% entwined shaft with large snake and a metal ferrule

H. 4 1/2" x 2", O.L. 37"

\$400-\$500

49.



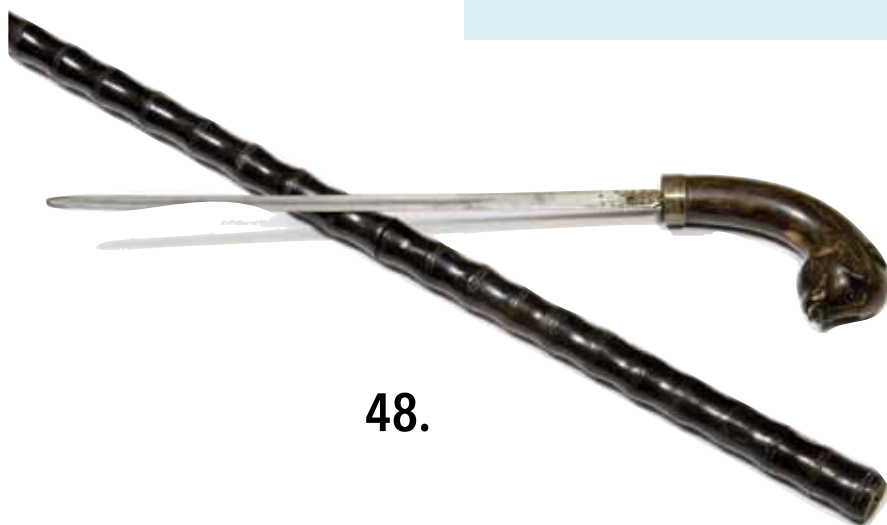
50. Pair of Alligator Canes

Early 20th Century

Average length 35"

\$300-\$500

48.



51. Pearl and Silver Dress Cane

Ca. 1885

A sterling silver over pearl Victorian handle signed sterling collar, flamed hardwood shaft and no ferrule

H. 4 1/2" x 1 3/4", O.L. 33"

\$350-\$450

52. African American Folk Cane

Ca. 1910

A one piece carved hardwood cane with a carved figure in a clown costume, an iron ferrule

O.L. 36"

\$250-\$350

53. Carved Parrot Cane

Ca. 1920

A finely carved and painted parrot with two color glass eyes, ornate silver metal collar, faux bamboo shaft and a metal ferrule

H. 2 3/4" x 2 1/2", O.L. 36"

\$350-\$500

54. "Century of Progress" Globe Cane

Ca. 1933

A souvenir from the World's Fair with a painted tin globe atop, oak shaft with original sticker and no ferrule

H. 1 1/2" in diameter, O.L. 35"

\$200-\$300

55. Tiffany & Co. Dress Cane

Early 20th Century

An ornate signed Tiffany 18kt gold handle which unscrews from the exotic wood shaft and a horn ferrule

H. 2" x 1", O.L. 35 1/2"

\$1,000-\$1,500

51.



52.



55.



53.



54.





56.

58.



57.



59.

60.



56. Horn Dress Cane

Ca. 1890

A horn dress cane possibly rhino with a gold disc atop, small gold collar, exotic wood shaft and a horn ferrule

H. 2 1/4" x 1 1/2", O.L. 36"

\$300-\$400

57. Folk Art Monkey Cane

Ca. 1880

A one-piece carved cane with a hand grasping a baby monkey with two color glass eyes, natural bark shaft and a brass ferrule

O.L. 33"

\$350-\$500

58. Antoine-Paris Dress Cane

Late 19th Century

Blonde horn handle, ribbed gold collar, signed Paris malacca shaft and a metal ferrule

H. 1 3/4" x 1 1/8", O.L. 35"

\$300-\$400

59. Victorian Dress Cane

Ca. 1870

A large carved horn handle with twig spurs, a gold-filled ornate endplate, ornate gold-filled presentation collar, ebony shaft and a metal ferrule

H. 4 1/2" x 1 3/8", O.L. 34 1/2"

\$400-\$600

60. Rock Crystal Dress Cane

Ca. 1890

A substantial piece of rock crystal which has silver metal overlays of flowers and branches, matching silver metal collar, ebony shaft and a horn ferrule

H. 2 1/2" x 7/8", O.L. 36 1/2"

\$700-\$900

61. Skull Poison Cane

19th Century

A hinged silver metal skull with British hallmarks, upper section of skull that's hinged with a pushbutton below the jaw and when opened there is a glass vial with a cork, working condition, bamboo shaft and a brass ferrule

H. 2 1/2" x 1 1/2", O.L. 35"

\$800-\$1,200

62. Nautical Bludgeon Cane

Ca. 1850

A heavily weighted handle which would double as a weapon, various nautical knots and weaves, flexible shaft and a 2" horn and metal ferrule

H. 1 1/2" x 4 1/2", O.L. 34"

\$700-\$900

63. Art Deco Dress Cane

Ca. 1920

A silver casting of a soldier in helmet with hanging chains, hallmarked but unreadable exotic wood shaft and a metal ferrule

H. 4" x 3", O.L. 33 1/2"

\$500-\$900

64. Japanese Sword Cane

Early 20th Century

A bark covered cane with a 17" blade with Japanese characters and a metal ferrule

H. 6" x 1 1/2", O.L. 34"

\$400-\$700



61.

62.



63.



64.



66.



65.

65. Skull Vine Cane

Ca. 1890

An unusual skull which is carved atop a thick wild vine and a metal ferrule

O.L. 34 1/2"

\$400-\$700

66. Japanese Monkey Cane

Ca. 1890

A carved stag handle with mother and baby, ornate metal collar, hardwood shaft and a stopper ferrule

H. 2 1/2" x 1 1/4", O.L. 35"

\$400-\$600

67. Silver Cannon Cane

Early 20th Century

A signed sterling cannon handle, ebony shaft and a metal ferrule

H. 5" x 2", O.L. 36 1/2"

\$350-\$450

68. Paris Sword Cane

Ca. 1885

A bamboo sword cane with a 27" blade which is signed "Morian, Paris", push and lock mechanism, handle rotates 360 degrees and a metal ferrule

H. 5" x 6", O.L. 36"

\$500-\$600

69. Folk-Art Snake Cane

Ca. 1865

An American carved snake cane with no ferrule

O.L. 36"

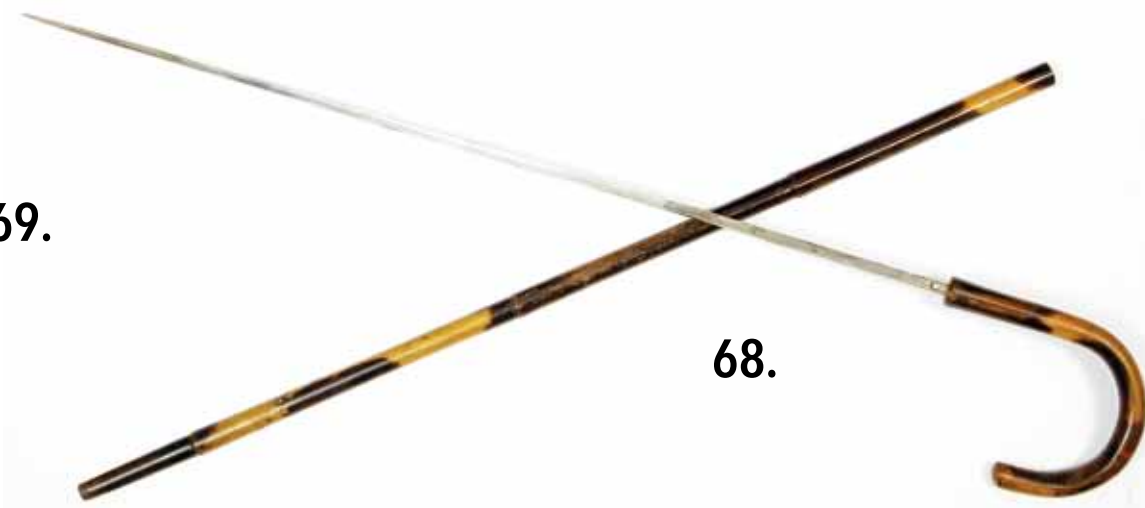
\$250-\$350



69.



67.



68.

70. Blow Gun Cane

Ca. 1850

A Malacca blow gun cane which is lined with metal, removable handle and ferrule

O.L. 36"

\$1,500-\$2,000

71. Memento Mori Carved Cane

Ca. 1885

A carved wooden handle with a skull figure dressed in a cloak and two skeletons and snakes carved on the rear, silver metal collar and no ferrule

H. 4" x 1 1/4", O.L. 37"

\$300-\$500

72. Nautical Dress Cane

Ca. 1875

A carved exotic wood nautical cane with whalebone and baleen spacers and a stopper ferrule

H. 1" x 1 1/2", O.L. 37"

\$500-\$700

73. Silver Dog Dress Cane

Early 20th Century

A coin silver cast handle in nice condition, British hallmarked collar, exotic wood shaft and a metal ferrule

H. 4" x 3", O.L. 37"

\$500-\$700



70.

71.

72.



73.



75.



76.



74.



74. Silver/Tortoise Dress Cane

Ca. 1880

Ornate British silver hallmarked handle, thick tortoise shell upper shaft, gold metal collar, ebonized shaft and a horn ferrule
H. 1 1/2" x 1 1/2", O.L. 36"

\$700-\$1,000

75. Nubian Change Purse Cane

Ca. 1880

A carved Nubian with one glass eyes and a patch over the other with carved teeth, spring loaded coin purse atop, silver metal collar, exotic wood shaft and a metal ferrule
H. 2 1/2" x 2 1/2", O.L. 36"

\$500-\$700

76. Bone Dress Cane

Ca. 1800

"Beatrice U Noselson" is carved into the bone collar, high relief carving of Pan, Geese, and a small child, exotic wood shaft and a metal ferrule
H. 5 1/2" x 1 3/4", O.L. 36"

\$1,000-\$1,500

77. Sword Cane

Ca. 1865

A full gutta percha sword cane with a 11" blade, push and pull mechanism, nice condition with a metal ferrule
H. 4" x 6", O.L. 36"

\$700-\$900



77.

78. Bludgeon Cane

Early 20th Century
A weighted silver metal figure of Punch,
exotic wood shaft and a metal ferrule
H. 2 1/2" x 1 1/2", O.L. 36"
\$300-\$500

79. Folk-Art Shoe Cane

Ca. 1875
A carved button up shoe handle with
attached hobnails, hardwood shaft and a
bone ferrule
H. 3" x 3", O.L. 34"
\$250-\$350

80. Japanese Mythological Cane

Ca. 1890
A carved stag antler Japanese cane with high
relief figures, handle is signed in Japanese
characters, interior damage to the right
hand of the figure atop, lead collar, painted
hardwood shaft and a metal ferrule
H. 6" x 1 1/4", O.L. 39"
\$700-\$900

81. Sterling Dress Cane

Ca. 1890
An unusual silver Art Nouveau handle, ebony
shaft and a horn ferrule
H. 2 1/4" x 3", O.L. 35"
\$350-\$450

82. Bludgeon Bronze Cane

Ca. 1900
A heavy bronze casting with a
smiling face, hardwood shaft and a
metal ferrule
H. 2" x 1 3/4", O.L. 35"
\$250-\$350



80.



79.



78.



82.



81.



83.



84.



83. Whale's Tooth Nautical Cane

Ca. 1860

A large carved whale's tooth handle with a tortoise disc atop, exotic wood spacer, shark vertebrae shaft and an exotic wood ferrule

H. 2" x 2 1/2", O.L. 36 1/2"

\$700-\$1,200

84. Bone Dress Cane

Ca. 20th Century

A massive carved bone clinched fist handle, bone and ebony collar, 80% carved ebony shaft and a horn ferrule

H. 5" x 2 1/2", O.L. 37"

\$400-\$600

85. Silver Dress Cane

Ca. 1890

An Art Nouveau signed sterling ornate handle, exotic wood shaft and a metal ferrule

H. 4 1/2" x 3", O.L. 35"

\$300-\$500

86. Pair of Sterling Dress Cane

Ca. 1890

An Art Nouveau dress cane with a signed sterling collar and end cap, triangle hardwood shaft and a metal ferrule

H. 4 1/4" x 1 1/2", O.L. 35"

\$250-\$350



85.



86.



87. Snake Dress Cane

Early 20th Century

A silver high relief handle which is weighted, signed .84 silver, silver monogram on exotic wood shaft and a stopper ferrule

H. 4" x 4", O.L. 34 1/2"

\$700-\$900

88. Chinese Dress Cane

Ca. 1930

A carved and painted bone dress cane with various jewels inlaid and attached, segmented bone shaft with animals and plants and a horn ferrule

O.L. 34 1/2"

\$500-\$1,000

89. Chinese Silver/Stingray Tail Cane

Ca. 1890

A cast silver handle with a fierce dragon and bamboo shoots, shaft is a natural stingray tail and a metal ferrule

H. 5" x 4", O.L. 35 1/2"

\$900-\$1,200

90. Gold Dress Cane

Ca. 1890

A gold dress cane which is unmarked but at least 14kt tested, engraved 9 pointed crown on front plate, 01 appears as a touch mark, snakewood shaft and a metal ferrule

H. 4" x 1 1/2", O.L. 36"

\$450-\$650



89.



87.

88.



90.





91.

92.

91. Silver Dress Cane

Ca. 1890

A British hallmarked flowered sterling handle, malacca shaft and a metal ferrule

H. 4 1/2" x 2 1/4", O.L. 35 1/2"

\$400-\$600

92. Rifle Gun Cane

Ca. 1870

A Babcock rifle cane which is signed on the striking hammer, working condition, early wood handle

O.L. 33"

\$1,200-\$1,800

93. Victorian Shoe Cane

Ca. 1875

A very nice example of a silver-plate Victorian shoe cane in fine condition, ebony shaft and a horn ferrule

H. 4" x 3 1/2", O.L. 36 1/2"

\$300-\$400

94. Cheroot Cannon System Cane

Ca. 1885

A nice working example of this genre of canes in bronze, cannon is attached to swivel by one rivet, ribbed bronze collar, hardwood shaft and a metal ferrule

H. 4" x 2", O.L. 35"

\$500-\$700



94.

93.

95. London Inverness-Shire Cane

Dated 1900

A presentation cane to "C. C. from the Association" with British hallmarks, 9 karat gold collar, carved hardstone bird with beautiful two color glass eyes, thick malacca shaft and a metal ferrule

H. 5" x 2", O.L. 34"

\$1,500-\$2,800

96. Lucite/Bakelite Dress Cane

Ca. 1940

An unusual bird with two color plastic eyes, malacca shaft and a horn ferrule

H. 3" x 4", O.L. 33"

\$150-\$250

97. African American Silver Dress Cane

Ca. 1890

A signed 1800 silver handle which is cast of a man with specific features being swallowed by a fish, exotic wood shaft and a horn ferrule

H. 4 1/4" x 2 1/2", O.L. 37"

\$500-\$700

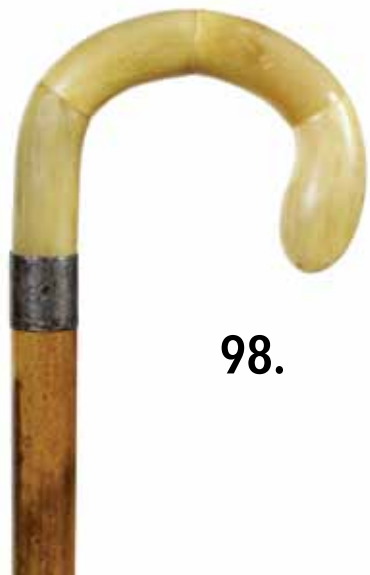
98. Horn Dress Cane

Dated 1927

A segmented horn handle, silver collar, thick malacca shaft and a horn ferrule

H. 4 1/2" x 3 1/2", O.L. 36"

\$150-\$250





99.

99. Art Nouveau Silver Dress Cane

Ca. 1890

A weighted defensive signed 800 silver handle with a pair of flowing nudes in high relief, probably German, snakewood exotic shaft and a horn ferrule

H. 4 1/2" x 3", O.L. 37"

\$1,000-\$1,200



102.

100. Folk-Art Bear Cane

Ca. 1900

A Black Forest carved one piece cane with two bears which each have black glass eyes, natural twigspr shaft and a metal ferrule

O.L. 37 1/2"

\$350-\$500



100.

101. Tortoise Dress Cane

Ca. 1890

A full tortoise dress cane with a 14 kt gold end cap and collar, minimum shrinkage of shell on shaft and a metal ferrule

H. 4" x 5 1/2", O.L. 35 1/2"

\$1,000-\$1,500



101.

102. Shagreen Dress Cane

Dated 1922

A beautiful deep blue color, silver collar with "Highland Basin" engraved which is probably the location where the material was taken from the ocean, ebony shaft and a horn ferrule

H. 3 3/4" x 5", O.L. 36"

\$700-\$1,000

103. Shagreen Dress Cane

Ca. 1915

A black and white based shagreen skinned handle, small silver metal collar, exotic wood shaft and a metal ferrule

H. 11" x 7/8", O.L. 38"

\$600-\$800

104. Silver Dress Cane

Early 20th Century

A jester style of figure in high relief, signed "H. Moller, Trondhjem, 830", ebony shaft and a metal ferrule

H. 1 1/2" x 1 1/2", O.L. 35 1/2"

\$250-\$400

105. Silver Dress Cane

Ca. 1900

A bright cut 900 silver handle with British hallmarks, ebony shaft with silver attachments near the top and a horn ferrule

H. 4 1/2" x 4", O.L. 36"

\$500-\$600

106. Silver Dress Cane

Late 19th Century

An ornate high relief twisted silver handle with an unreadable owner's name engraved, exotic wood shaft and a metal ferrule

H. 4" x 4", O.L. 35"

\$400-\$600

104.



103.



105.



106.



107.

109.

108.

110.

107. Skull Defensive Cane

20th Century

A weighted 800 silver bludgeon cane with unreadable hallmarks, exotic wood shaft and a horn ferrule

H. 4 1/2" x 2 1/2", O.L. 34 1/2"

\$500-\$600

108. Silver Frog Cane

20th Century

A figural silver metal frog with two large green and black eyes, ebonized shaft and a horn ferrule

H. 4" x 2", O.L. 33"

\$500-\$1,000

109. Silver Dress Cane

Ca. 1900

A figural silver handle of a hound with a pheasant in its mouth, signed 800 silver with blurred hallmarks, exotic wood shaft and a horn ferrule

H. 4 1/2" x 4 1/2", O.L. 36"

\$500-\$1,000

110. Elk Hunting Cane

Late 19th Century

A high relief cast handle of hounds and elks, sterling silver signed 925 plus other unreadable hallmarks, hardwood shaft and a horn ferrule

H. 2 1/2" x 1 1/2", O.L. 36"

\$350-\$500

111. Cloisonné Dress Cane

Late 19th Century

A Chinese cloisonné handle with very vibrant and different colors, background is goldstone, copper cast flower atop, exotic wood shaft and a horn ferrule

H. 10" x 1 1/8", O.L. 37"

\$700-\$1,200

112. Fox Hunting Cane

Ca. 1925

A large carved stag horn with various panels in high relief of horseman, foxes, hunters, dog handlers and dogs, the sly old fox is also carved atop the handle, leather collar, twig spur shaft and a pike iron ferrule

H. 7" x 7 1/2", O.L. 34 1/2"

\$500-\$700

113. Bulldog Cane

Ca. 1925

A carved bulldog with silver overlaid ears and two color glass eyes, oak hardwood shaft and a horn ferrule

H. 5 3/4" x 4 1/2", O.L. 36"

\$500-\$600

114. Tortoise Compact Cane

Late 19th Century

A hinged silver compact with mirror in working condition, tortoise disc atop, silver collar, malacca shaft and a horn ferrule

H. 1 3/4" x 1 1/4", O.L. 33"

\$350-\$500

111.



112.



113.



114.





116.

115. Shepherd Carved Cane

Ca. 1910

A large carved shepherd with two color glass eyes, silver metal collar, thick bamboo shaft and a horn ferrule
H. 3 1/2" x 3 3/4", O.L. 38"

\$400-\$600

116. Defensive Cane

20th Century

A spring loaded French defensive cane which works as a bludgeon type of weapon, when the collar is lowered the springs throw six spears to the top of the handle and it becomes a very unique and deadly weapon, ebonized shaft and a horn ferrule

H. 3" x 1 3/4", O.L. 35"

\$500-\$1,000

117. Folk-Art Dog Cane

Ca. 1925

A large carved dog head, studded wooden collar, exotic wood shaft and a metal ferrule

H. 3" x 2 1/2", O.L. 38"

\$400-\$600

115.



117.



118. Sterling Dress Cane

Ca. 1900

A signed sterling tree bark handle with a great thumb rest, exotic wood shaft and a horn ferrule

H. 4 1/2" x 2", O.L. 35"

\$300-\$400



118.

119. 18 kt Gold Dress Cane

Ca. 1890

A beautiful, stunning Art Nouveau signed 18 kt gold handle which speaks for itself, small gold collar, mahogany shaft and a metal ferrule

H. 4 ½" x 4", O.L. 35"

\$1,000-\$1,500

120. Poison Container Cane

Ca. 1930

A turned brass handle which has a top when unscrewed exposes a large spoon, brass collar, ebonized shaft and a metal ferrule

H. 5" x ¾", O.L. 35 ½"

\$250-\$400

121. Agate and Silver Dress Cane

Ca. 1900

A beautiful striped dark agate with sterling overlay, signed sterling collar with the maker's initials J. S. & S., exotic wood shaft and a metal ferrule

H. 2 ¾" x 1 ½", O.L. 37"

\$700-\$1,000

122. Fox Hunting Cane

Early 20th Century

The porcelain handle has a nice scene of fox hunters and horses atop, unscrew the handle and there is an early dog whistle to call the hounds in, ebonized shaft and a metal ferrule

H. 2" x 1", O.L. 37"

\$500-\$700



119.

120.



122.



121.



123.



124.



126.



125.

123. Airedale Carved Cane

Ca. 1930
A carved and decorated dog handle with two color glass eyes, partial leather upper collar with a pair of eyelets, white metal collar, ebonized shaft and a metal ferrule
H. 4 1/2" x 3 1/4", O.L. 36"
\$400-\$600

124. Hecklers Cane

Ca. 1870
A horn hecklers cane, by blowing into the handle it produces a whine and razz type sound used to heckle the speakers in Parliament, carved with lanyard holes and a threaded disc atop, ornate gold metal collar, malacca shaft and a metal ferrule
H. 2 1/4" x 1 1/2", O.L. 34"
\$600-\$900

125. Art Nouveau Dress Cane

Ca. 1890
A signed sterling Art Nouveau handle with an inlaid ivory face, ebonized shaft and a horn ferrule
H. 6 1/2" x 1 1/4", O.L. 35"
\$500-\$700

126. Cloisonné Dress Cane

Early 20th Century
A Chinese cloisonné dress cane with bronze wire filigree atop which is incrustated with various jewels, minor enamel missing in the handle, hardwood shaft and an iron ferrule
H. 10 1/2" x 7/8", O.L. 41"
\$500-\$800

127. Folk-Art Man

Ca. 1885

A one piece carved cane, probably British, with a gentleman with two color glass eyes, exotic wood shaft and a horn ferrule

O.L. 33"

\$350-\$500

128. Art Nouveau Silver Cane

Ca. 1890

A high relief carving of Eve holding the snake in the Garden of Eden with apples hanging from the tree, signed 925, hardwood shaft and a horn ferrule

H. 4 1/2" x 4 1/2", O.L. 34 1/2"

\$700-\$900

129. Tortoise Dress Cane

Ca. 1890

A very nice Art Nouveau example, signed 18 kt collar, ebony shaft and a horn ferrule

H. 4 1/2" x 3 1/2", O.L. 36"

\$600-\$900

130. Silver Rabbit Cane

20th Century

A silver metal rabbit with the hallmark "J.C.", silver content unknown, purple eyes, ebony shaft and a horn ferrule

H. 5" x 1 3/4", O.L. 36"

\$500-\$800



129.



128.

127.



130.



132.

131. Silver Dress Cane

Ca. 1890

An unmarked silver Art Nouveau handle in nice condition, exotic wood shaft and a horn ferrule
H. 3 $\frac{3}{4}$ " x 3 $\frac{3}{4}$ ", O.L. 34 $\frac{1}{2}$ "

\$350-\$450



132. Tiffany Nast Eagle Cane

Early 20th Century

A nice example of this Tiffany cane with a New York presentation, signed Tiffany & Co. Sterling, small dent on collar, natural twigspur shaft and a metal ferrule

H. 4" x 2 $\frac{1}{2}$ ", O.L. 34"

\$2,000-\$3,000

133. Boxing Cane

Early 20th Century

A Britannia metal boxing glove, hardwood shaft and a metal ferrule

H. 2 $\frac{1}{2}$ " x 1 $\frac{5}{8}$ ", O.L. 35 $\frac{1}{2}$ "

\$300-\$400



131.



133.

134. Parrot Cane

Early 20th Century

A group of six parrots carved in horn with glass eyes on a horn perch, ornate silver metal woodland style collar, hardwood shaft and a horn ferrule

H. 4 1/4" x 1 1/2", O.L. 37"

\$700-\$1,000

135. Boxer/Bulldog Cane

Ca. 1900

A carved glove holder cane with a spring mechanism in its lower jaw, only one glass eye, early painted collar, thick exotic wood shaft and a metal ferrule

H. 3 1/2" x 2 1/4", O.L. 36"

\$400-\$500

136. Butterscotch Bakelite Cane

Ca. 1938

A one piece bakelite crook handle cane in one of the best colors, very nice condition and a brass ferrule

H. 5" x 4", O.L. 36"

\$300-\$600

137. St. Bernard Cane

Ca. 1900

A carved elk antler with a large St. Bernard resting, ornate silver metal collar, natural twig spur shaft and a metal ferrule

H. 6 1/2" x 3 1/4", O.L. 35"

\$350-\$500

134.



136.



137.



135.



138.



138. Jade Dress Cane

Dated 1914

A beautiful jade handle in the right color, unmarked but tested 14 kt gold presentation collar, malacca shaft and a metal ferrule

H. 3 1/2" x 2", O.L. 35"

\$800-\$1,200

139.



139. Gold Dress Cane

Early 20th Century

Probably a trophy cane of sorts due to the skin applied to the crook handle, signed 14 kt gold end cap and collar, exotic wood shaft, a Wilkoff style cane and a horn ferrule

H. 4" x 2 1/2", O.L. 35"

\$500-\$600

141.



140. Gold Dress Cane

Ca. 1860

A high relief gold filled handle in very fine condition, eight sided American walnut shaft and a metal ferrule

H. 1" x 2 1/4", O.L. 34 1/2"

\$300-\$400



141. Baleen Nautical Cane

Ca. 1860

An unusual full baleen cane which retains an original sticker from at least 100 years ago, nautical wrapped collar and a metal ferrule

H. 1 1/4" x 1 1/4", O.L. 36 1/2"

\$800-\$1,200

140.

142. Flick Stick Cane

Ca. 1860

A working 3 1/2" stiletto blade with brass attachments, buffalo horn handle, thick malacca shaft and a brass ferrule

H. 1 3/4" x 1 3/4", O.L. 36"

\$1,000-\$1,200

143. Folk-Art Dog

Ca. 1920

A carved lying folk-art dog, ornate gold-filled collar, natural twigspur shaft and a pike ferrule

H. 4 1/2" x 1 1/2", O.L. 33"

\$300-\$400

144. Quartz Dress Cane

Ca. 1890

A pretty quartz handle with a violet tint, large silver collar which is signed Brigg London, thick ebony shaft and a horn ferrule

H. 2 1/2" x 1 1/8", O.L. 36"

\$500-\$600

145. Enamel Parrot Cane

20th Century

An enamel parrot head with two color glass eyes with an over varnish, one small section of varnish is missing on the rear of the head, ornate gold-filled collar, ebonized shaft and a metal ferrule

H. 1 3/4" x 1 3/4", O.L. 36"

\$250-\$350



143.



144.



145.



142.



146.



147.



148.



149.

146. Hardstone Dress Cane

Ca. 1900

An unusual pink quartz in the shape of an egg, signed 14 kt gold lower handle, unreadable hallmarks but probably Russian, snakewood shaft and a metal ferrule

H. 2" x 1 3/8", O.L. 36 1/2"

\$1,500-\$2,000

147. Agate Dress Cane

Early 20th Century

A bold and earthy agate handle in nice condition, British hallmarked collar, faux bamboo partridge wood shaft and a metal ferrule

H. 1 3/8" x 2 1/4", O.L. 34 1/2"

\$400-\$600

148. Boxer Dress Cane

Early 20th Century

A gold-filled boxer with muzzle and collar, ebony shaft and a metal ferrule

H. 1 3/8" x 1 1/2", O.L. 34"

\$250-\$400

149. Quartz Dress Cane

Early 20th Century

A pink quartz mushroom style handle with a vibrant color in fine condition, silver metal collar with a bright cut rock crystal faceted attachment, snakewood shaft and a horn ferrule

H. 2 3/4" x 1 1/2", O.L. 38"

\$800-\$1,200

150. Gold Stone Dress Cane

Ca. 1890

A beautiful gold stone enamel handle with silver overlay, signed sterling presentation collar, faux bamboo partrigewood shaft and a metal ferrule

H. 1 1/2" x 1 3/4", O.L. 36"

\$500-\$1,000

151. Shark Vertebrae Cane

Ca. 1900

A nice example in fine condition with a horn handle and a horn ferrule

O.L. 35 1/2"

\$250-\$350

152. Bludgeon Dress Cane

Ca. 1885

A cast silver plated handle which doubles as a defensive weapon due to its weight, silver metal ornate collar, exotic wood shaft and a metal ferrule

H. 3" x 3", O.L. 35"

\$300-\$500

153. Pug Hardstone Dress Cane

Early 20th Century

A carved agate in the form of a pug or some type of bulldog, orange and black glass eyes, nice agate lines throughout the handle, ornate silver metal collar, rich snakewood shaft and a horn ferrule

H. 2" x 2", O.L. 39 1/2"

\$3,000-\$4,000



151.



150.



153.



152.



156.

154. "F. Dalbiac" Defensive Cane

20th Century

A signed artist rendering of a very heavy defensive cane, the ears the nose and the horns work as if it were a mace, thick malacca shaft and a metal ferrule
H. 3" x 3", O.L. 36"

\$250-\$350

155. African Animal Cane

Early 20th Century

A silver metal handle with a stylized animal, British hallmarked silver collar, ebonized shaft and a metal ferrule

H. 5 x 2 3/4", O.L. 36"

\$250-\$350

156. African American Nut Carvings

Late 19th Century

A pair of early representational African American carvings with glass eyes and carved in great detail
Avg. length 36", smallest handle is 2 1/4" x 1 1/2"

\$700-\$1,200

157. Blue Agate Dress Cane

Dated 1890 Century

A nice lapis color with a coin silver crown collar which is British hallmarked and dated 1890, ebony shaft and a metal ferrule

H. 1 1/2" x 1 1/2", O.L. 38 1/2"

\$500-\$800



154.



155.



157.

158. Silver Dress Cane

Dated 1906

A signed 800 silver German handle in nice condition, ebony shaft and a metal ferrule

H. 4 1/4" x 3", O.L. 36"

\$250-\$350

159. Toledo Dress Cane

Ca. 1900

An extremely nice Toledo ball with much gold overlay atop, gold metal collar, fancy twigspur shaft and a horn ferrule

H. 1 5/8" x 1 5/8", O.L. 33 1/2"

\$700-\$1,000

160. Rock Crystal Snake Dress Cane

Early 20th Century

A beautiful rock crystal handle which is wrapped by an 18 kt gold snake with small diamond eyes and what appears to be a ruby atop, gold collar is hallmarked but is unreadable but what we can make out is that it is a Russian piece, ebony shaft and a horn ferrule

H. 3" x 5/8", O.L. 36"

\$2,500-\$3,500

160.

159.



158.





161.

163.



162.



161. Rock Crystal Dress Cane

Early 20th Century

An unusual rock crystal with a millefiori flower in various colors atop, unmarked 800 silver collar and top cap, ebony shaft and a horn ferrule

H. 1" x 2", O.L. 37"

\$1,500-\$2,500

162. Hard Stone Dress Cane

Early 20th Century

The agate has greens oranges and whites throughout and maybe a little brown, large gold-filled collar, ebonized shaft and a metal ferrule

H. 2 1/2" x 7/8", O.L. 36"

\$400-\$500

163. Rock Crystal Dress Cane

Early 20th Century

A carved four level rock crystal handle with a round red cabochon atop with a gold bezel, gold metal collar, ebony shaft and a horn ferrule

H. 3 1/4" x 1 1/4", O.L. 38"

\$1,000-\$1,500

164. Toledo Sword Cane

Ca. 1860

Horn handle, ornate brass collar, push and pull signed Toledo 14" blade, malacca shaft and a metal ferrule

H. 3 3/4" x 1 1/2", O.L. 35"

\$600-\$800



164.

165. Agate Dress Cane

Early 20th Century

A carved agate handle with a beautiful eye affect atop, hallmarked British silver collar, ebony shaft and a horn ferrule

H. 1 5/8" x 1 5/8", O.L. 37"

\$300-\$400

166. Agate Dress Cane

Ca. 1870

A carved caramel and tan agate with a flower overlay, silver metal collar, bamboo shaft and a metal ferrule

H. 3" x 1 1/2", O.L. 35 1/2"

\$500-\$600

167. Art Nouveau Dress Cane

Ca. 1890

A carved ivory lady with her fancy hat atop, signed pair of sterling collars, hardwood shaft and a spear ferrule

H. 5" x 1 1/4", O.L. 30 1/2"

\$800-\$1,200

168. Folk-Art Monkey Cane

Late 19th Century

Truly a funny monkey, very well carved, original patina, unusual branch shaft with bumps throughout and a metal ferrule

H. 3 1/2" x 1 1/2", O.L. 36"

\$400-\$600

167.

165.

168.

166.





170.

169. Whale's Tooth Cane

Ca. 1940

A scrimshaw depiction of a whale and a whaler's boat with spear in hand, baleen spacer, bamboo shaft and a brass ferrule

H. 4 1/2" x 2 1/2", O.L. 35"

\$400-\$500

171.

170. Five Folk-Art Canes

All 100 years old

\$500-\$1,000

171. Jade Dress Cane

Ca. 1920

An 1 1/4" jade ball spun and worked gold-filled ornate gold-filled collar, snakewood shaft and a horn ferrule

O.L. 36 1/2"

\$300-\$400



169.



172.



172. Group of Six Wilkoff Style Antique Walking Canes

In good condition

\$300-\$500

173. Not a Dartmouth Indian Cane

Early 20th Century

A carved Indian that looks much like the University cane but is not, chip carved hardwood shaft and no ferrule

O.L. 37"

\$200-\$300

174. Group of Six Horn Etc. Antique Canes

\$500-\$800

175. Group of Six Sterling and Silver Metal Canes

\$400-\$700

176. Group of Six Antique Canes

\$500-\$800



173.



174.



175.



176.



179.

178.

177. Group of Six Antique Canes and One Sword Cane

All in nice condition

\$400-\$700

178. Three Antique Folk-Art Canes

\$200-\$400

179. Japanese Carved Canes

Early 20th Century

One being a 1000 face Noah cane and the other a dancing skeleton cane

Avg. L. 36" - nice condition

\$500-\$700

180. Cork Cane

Ca. 1900

A natural grown cork cane with original patina and metal ferrule

O.L. 36"

\$200-\$300

180.



177.

**181. Sword Umbrella
Cane**

20th Century

A nice sword umbrella with good fabric, ready for rain, 23" four sided blade, oak handle and a metal ferrule

O.L. 36"

\$350-\$500

**182. American Folk Art
Canes-George H. Meyer,
autographed**

\$75-\$150

**183. Bastoni Da
Passeggio Walking Sticks**

Alfredo Lamberti

\$200-\$300

**184. Spazierstocke-Ulrich
Klever**

\$150-\$200

**185. Stick to Canes Part
One and Part Two-VHS
Video**

\$60-\$150

**186. Canes through the
Ages**

Francis H. Monek

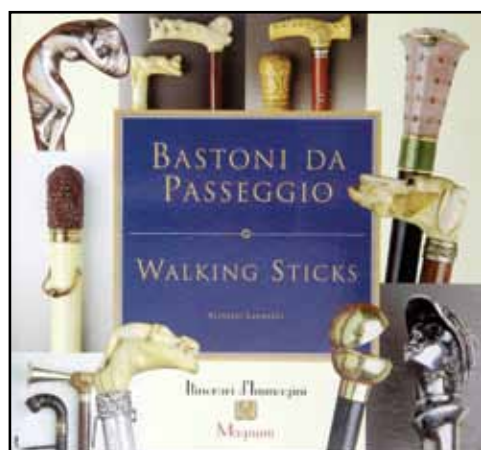
\$100-\$200



181.

184.

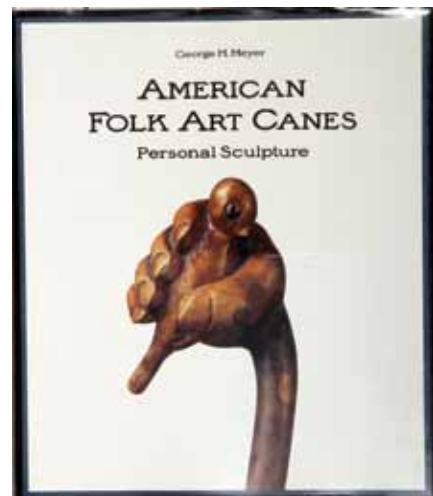
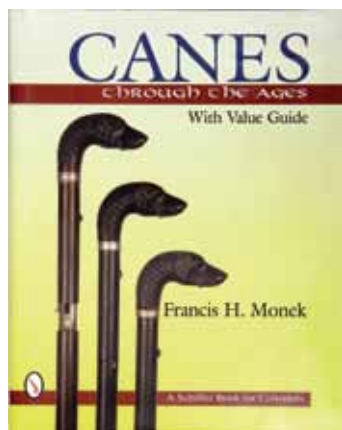
183.



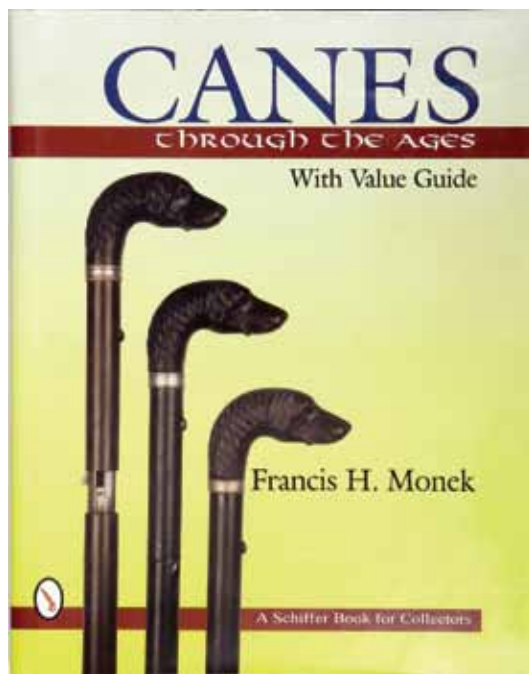
186.

185.

182.



187.



187. Canes through the Ages

Francis H. Monek

\$100-\$200

188. Cane Curiosa-Catherine Dike

English Edition

\$250-\$350

189. Canes in the United States

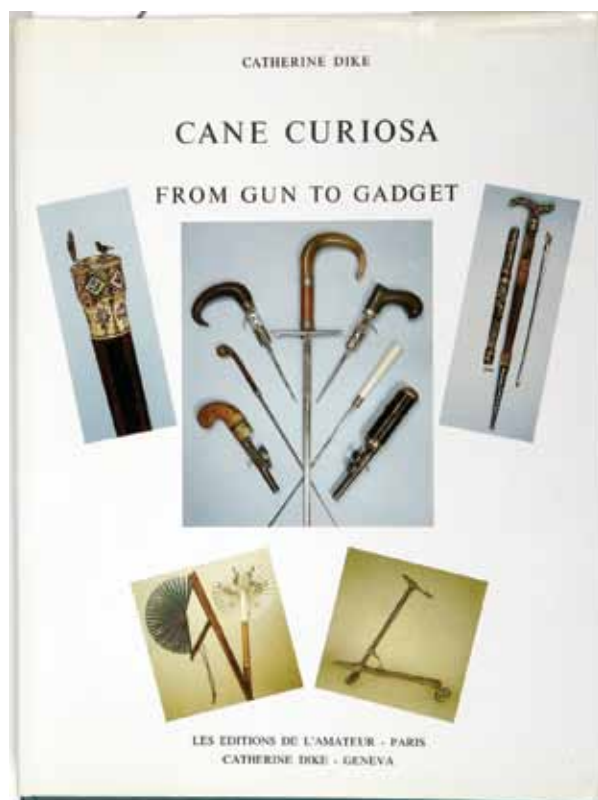
Catherine Dike

\$100-\$200

190. Der Stocksammler

July 1997

\$50-\$100

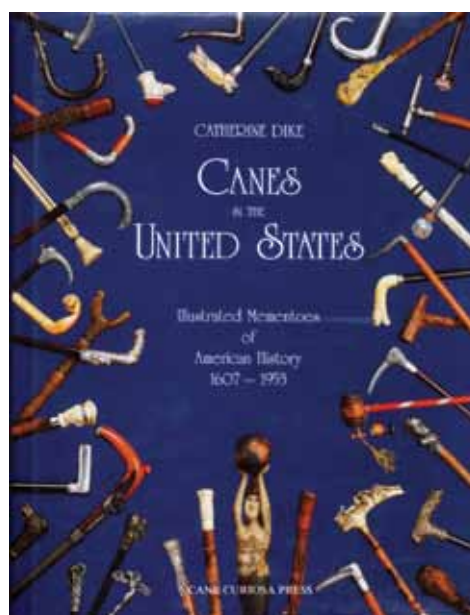


188.

189.



190.



191. Canes from the Seventeenth to the Twentieth Century

Jeffrey B. Snyder
\$40-\$60

192. Walkingsticks

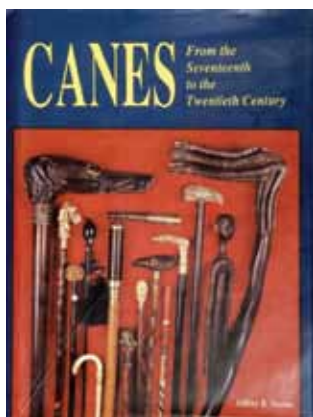
Ulrich Killever
\$50-\$75

193. Oak Cane Case

Ca. 1890
Original Oak cane display case with original glass,
78 spaces, stick and ball separations,
stepped bottom, front lift top, brass hinges.
46 x 36 x 19
\$1,200-\$1,800

194. Oak Cane Case

Ca. 1890
Golden oak original finish cane display case, lift top
front and stepped bottom, 78 spaces stick and ball
separations, brass hinges, Plex curved glass top
replaced.
48 x 37 x 19
\$1,000-\$1,300



191.



192.



195.

195. Oak Cane Case

Ca. 1900

Oak cane case with original finish, lift top front and stepped bottom, 78 spaces, brass hinges, Plex curved glass top replaced.

46 x 36 x 19

\$1,000-\$1,300

196.

196. Round Oak Cane Case

Ca. 1880

A rarely found golden oak round cane display case on wheels, 39 holes for canes but could hold two canes per hole, lift top with nice brass hinges, also curved rear door.

42 x 21

\$3,000-\$4,000



197. Fan Cane Stand

Modern- Walnut fan cane stand for 12 canes. 28 x 29 x 5

\$300-\$500

198. Fan Cane Stand

Modern- Walnut fan cane stand for 12 canes. 28 x 29 x 5

\$300-\$500

199. Bronze Cane Stand

Ca. 1925

Oriental bronze cane stand with high relief decorations of cranes etc.

24 x 10

\$400-\$600

200. Hercules Cast Iron Cane Stand

Ca. 1860

A rare and unusual cast iron stand of Hercules, probably French, attention paid to every detail of the casting, notice the snake is the top holder for the canes, this is a must for any collector.

33 x 9 x 17

\$1,000-\$1,500

200.



199.



198.



197.



Kimball M. Sterling, Inc. (TFL-1915)
125 West Market Street
Johnson City, Tennessee 37604
kimballsterling @ earthlink.net
423.928.1471

Photography by James Price

Catalog Design by KT Design, LLC
www.ktdesignllc.com

© Copyright 2015 Kimball M. Sterling, Inc.



KIMBALL AND VICTORIA STERLING PRESENT THE

HENRY FOSTER COLLECTION

www.AuctionAuction.com