

KIMBALL AND VICTORIA STERLING PRESENT A

WINTER ANTIQUITY CANE AUCTION



SATURDAY
DECEMBER 12TH

12:00 NOON EST

KIMBALL AND VICTORIA STERLING PRESENT A

WINTER ANTIQUE CANE AUCTION

SATURDAY
DECEMBER 12TH
12:00 NOON EST

PREVIEW
SATURDAY, DECEMBER 12TH AT 10:00 A.M. EST
OR TWO WEEKS PRIOR TO THE AUCTION BY APPOINTMENT



www.AuctionAuction.com

Live on the internet at
LIVEAUCTIONEERS.COM
Two Time Winner of Best of Show
from the National
Auctioneers Association

Kimball M. Sterling Auction Gallery
125 West Market Street
Johnson City, Tennessee 37604
[kimballsterling @ earthlink.net](mailto:kimballsterling@earthlink.net)
423.928.1471

TERMS & CONDITIONS

1. Cash or check. A 20% buyers' premium will be added to the hammer price as part of the sale price for all bidders. Internet bidders will pay 23%. We reserved the right to hold purchases until the buyers checks clears if buyer is not known by us. Bank letter of credit is acceptable.

2. Mail or phone bids are accepted; the firm may require a deposit.

3. Kimball M. Sterling, Inc. has endeavored to catalog and describe the property correctly. All property is sold as is and neither the auction company nor the consignor will be responsible for descriptions, genuineness, provenance or condition of the property. No statement in the catalog made orally at the sale or otherwise shall be deemed to be a warranty, representation, or an assumption of liability.

4. In the event of any dispute between bidders, the auctioneer shall have total discretion to determine the successful bidder, in which his determination shall be final or to re-offer and resale the article in dispute. Title of the item or items purchased by the bidder will pass at the fall of the gavel and declaration of bidder. This is not an approval auction. All measurements are approximate.

5. Principal auctioneer: Kimball M. Sterling #2467. B. Elizabeth Sterling, auctioneer # 5757. Firm Kimball M Sterling Inc. TFL-1915

6. Bidders may bid live on the Internet by visiting <http://www.auctionauction.com>. You may also view the auction at this site and bid by phone.

7. Communications:
Telephone 423-928-1471.
Fax 423-928-2816.
Cellular 423-773-4073, 423-773-4072.
Email kimballsterling@earthlink.net

8. We do not ship protected items overseas but anything else will be shipped by the UPS Store in Johnson City. We can however hold your item till you or a friend visit's the USA and you can take your items as a personal item or we can ship to a friend in the USA.

9. Kimball M. Sterling, Inc. will not be held responsible for bids received on the day of the auction, unexecuted absentee bids, phone bidders not contacted or slow Internet bids. Although we do attempt to get all bids executed problems do occur. There will be no recourse from the bidder. We will not be responsible for items left on our location for over 30 days.

10. Sale will be conducted at 125 West Market Street, Johnson City, Tennessee. 37604. Announcements day of the sale take precedence over pre-sale advertising. Any litigation that pertains to this auction will be conducted in the county of Washington in Tennessee and is agreed upon by registering for this auction.

11. Airport is the Tri-Cities Airport, which is approximately 20 miles from the gallery. Internet catalog and live bidding available at www.auctionauction.com Best Western Hotel: 423-282-2126. A very fine hotel which offers Sterling Auction a discount rate is the Carnegie Hotel 1216 W State of Franklin Rd, (423) 979-6400.

12. Please call for condition report on sale lots or email us. We do send out multiple photos by email of any lot in the auction. By registering for this auction you accept the terms.

13. Parking service is free.



1. Ivory Elephant Cane

Ca. 1890-Substantial ivory knob carved in fine and naturalistic detail as a full bodied foraging elephant on an integral stone plinth, ebony shaft. The bulk animal is amazingly adapted to the form of the handle.

H. 2 1/2" x 4 3/4", O.L. 37 3/4"

\$2,500-\$3,500

2. Mascot Paperweight Dress Cane

Ca. 1900-Mushroom shaped latticino and millefiori glass knob beautifully displaying a bundle of feather-like, blue and white twirling sprays culminating at the top under a large Clichy Rose, plain yellow metal collar, dark fruitwood shaft and a horn ferrule. French.

H. 1 3/4" x 1 1/2", O.L. 39 3/4"

\$500-\$700

3. Jeweled Hard Stone Dress Cane

Ca. 1900-L-shaped heliotrope handle of a deep green color with the desirable red flecks on a high karat, matt yellow gold collar with two white gold slender borders of tiny and individually set rose diamonds framing the bold and raised inscription "1831 17.1.1901" also tightly set with rose diamonds. Ebony shaft and a horn ferrule. H. 3 1/4" x 2 1/4", O.L. 33 3/4"

\$6,000-\$8,000



4. Silver Dress Cane

Ca. 1880-Derby shaped silver handle hand chased and engraved in the Baroque taste, ebony shaft and a horn ferrule. Way out of the ordinary, this cane impresses with its balanced harmony and skillful execution and shows subtle details including an obscured hallmark which hint to a probable Russian origin. H. 2 ½" x 3 ¼", O.L. 36"

\$600-\$800

5. Figural Hard Stone Cane

Ca. 1890-Muddy green jasper hippopotamus head on a malacca shaft with a braided silver wire collar and a metal ferrule. The joyous flair of the amphibious animal is accented by the protruding eyes placed high on the roof of the skull. The latter are emphasized with inset blue stones, possibly sapphires. This one-of-a-kind Viennese cane is in the Fabergé Russian Style and belongs to the upscale jewelry Objects of Virtue. H. 2" x 3", O.L. 36"

\$6,000-\$8,000



5.



4.



6.

6. Ivory Dress Cane

Ca. 1820-Ivory Derby shaped handle carved with twirls bundling at both ends under foliage and presented on a longer stem with matching design. Ebony shaft and an ebony ferrule. The proportions of the handle as well as its profile with an apparent Baroque taste speak for an early cane and most likely French. The patina and the expertly secured hairlines to the ivory hint to nearly two centuries of age as well. H. 6" x 3 ¼", O.L. 37 ½"

\$600-\$800



8.

7. Silver China Man Dress Cane

London 1879-Silver ball knob well chased and engraved to depict a China Man with long, pointed ears, inset glass eyes and a bow tie, well figured rosewood shaft with a rarely seen, naturally saturated color and a matching horn ferrule. Clear full set of London hallmarks beside a "TJ" maker's mark. H. 1 1/2" x 1 1/2", O.L. 36 3/4"

\$900-\$1,500

7.



8. Ivory and Red Coral Cane

Ca. 1850-Substantial T-shaped ivory handle set with a large red coral Renaissance panel depicting what seems to be, a loving couple, malacca shaft and a metal ferrule. This visually striking cane was created to revere the coral panel, a precious and most likely Grand Tour souvenir, presented as trophy, surrounded by gracing crowns of laurel leaf. H. 6" x 4", O.L. 38"

\$4,000-\$6,000

9. Early Gold Locket Cane

Dated 1830-Small 18 karat gold container knob fashioned in a shaped inspired by an Etruscan urn with two handles on an ebony shaft with a matching also 18 karat gold ferrule. The knob is hand chased and engraved with scrolls on the top and a radiating fluting pattern on the bottom and comes with its cylindrical collar engraved "H.E.F. 1830". The hinged top opens to reveal on one side a small container with a lock of blond hair under glass cover and on the other the engraving "Palermo H.E.F." above an "E and C".

H. 1 1/4" x 1", O.L. 35 3/4"

\$1,600-\$2,000



10. Ivory and Silver Grand Tour Cane

Ca. 1870-Turned ivory knob set at the top with a silver head of Athena modeled in high relief and very fine detail, malacca shaft and a 3" tall iron ferrule. The cane was obviously used over a longer period and has the right amount of wear and age marks to increase its appeal and decrease its value.

H. 2 1/4" x 2", O.L. 33"

\$800-\$1,000



9.

11.

10.



11. Gold Mounted Rock Crystal Carnation Cane

Ca. 1890-Rock crystal ball knob gracefully engraved with two white carnations embellished with an 18 karat yellow gold ring and collar en suite. The engraved carnations are embellished with pale color highlights while the gold parts are engine turned with a repeating cross over laurel leaf pattern, stars over circular lines and matching cross over laurel leaf pattern border ring. Ebony shaft and a horn ferrule. This tasteful cane which exhibits several features unique to the legendary creations of Casal. H. 1 1/2" x 1 1/4", O.L. 38 1/4"

\$2,500-\$3,500





12.

**12. Ivory and Ebony
Figural Cane**

Ca. 1890-The knob is fashioned of ivory and ebony the classical Beaux-Arts materials and carved to depict the head of a young black woman wearing a Sunday head gear. Her juvenile face is rather flat and spirited with a pair of striking eyes, elegant nose and clearly delineated, sensual lips. H. 3 1/2" x 3 1/4", O.L. 35 1/2"
\$3,000-\$4,000

13.

**13. Hard Stone and Guilloche
Enamel Dress Cane**

Circa 1890-Plain rose quartz ball topping a substantial and tapering silver plinth totally engine turned with a wavy pattern and transparent pale green and pink enameled. The enamel is furthermore emphasized with delicate 24 karat yellow gold dots and hair-line decoration. Better than the best, this handle is truly the work of a master artisan's hand, in the taste of the celebrated Georg Adam Scheid from Vienna. H. 4 1/2" x 1 3/4", O.L. 37 1/2"
\$1,200-\$1,800



14. Ivory Memorabilia Cane

Ca. 1860-Sizeable handle carved of a single piece of fine grained ivory to depict the bust of the German Emperor Wilhelm I, well-dressed malacca shaft with a wide turned ivory collar and a 2 1/2" tall ivory ferrule.

H. 4 1/4" x 2 1/4", O.L. 36 3/4"

\$1,500-\$2,000



14.

15. Hard Stone Dress Cane

Ca. 1900-Large and well-proportioned Opera shaped rhodonite handle of an intense pink color and with distinguishing dark veins, malacca shaft with a braided silver wire collar and a white metal ferrule. This cane has possibly Russian ties, surely in the best taste of Carl Fabergé and belongs to the most desirable upscale jewelry objects or Virtue. H. 4 3/4" x 2", O.L. 35"

\$1,800-\$2,800



15.

16.



16. Figural Tortoiseshell and Ivory Cane

Ca. 1850-The handle features a large solid tortoiseshell figure of a putto standing on a plain turned ivory base and holding a larger round vessel with an ivory cap on the left shoulder. Ebony shaft and a stag horn ferrule. The carving is fine and detailed and plays, in the right light, all the seducing, mottled warm color and fascinating translucency of the noble organic material. Custom made to the highest standards for a wealthy client, this cane is surely a one-of-a-kind great collectable. H. 5 1/4" x 1 3/4", O.L. 38 1/2"

\$2,500-\$3,000



17.

17. Figural Marine Cane

Ca. 1850-Sperm whale tooth handle carved to depict, what seems to be, a humpback whale with its integral stem-collar turned with multiple rings on its single piece whale bone shaft of an unusual, slightly oval shape. The large aquatic mammal shows the distinctive body shape with unusually long pectoral fins, a knobby head with blow hole and longer lower jaw flanked by a pair of tiny eyes and terminates with the specific triangular flukes. H. 5 1/2" x 2 1/4", O.L. 33 1/2"
\$1,800-\$2,500

18.



18. Tortoiseshell Cane

Ca. 1880-Straight tortoiseshell handle with a beautiful cloudy structure and seducing warm tones consisting of a ball on a longer, straight, plain and slightly tapering stem, malacca shaft with a grooved and gilt collar and a metal ferrule. H. 4 1/4" x 1 1/2", O.L. 34 1/2"
\$600-\$800

19.

19. Top Rate Marine Cane

Ca. 1850-Substantial whale tooth knob well carved as a fist with a buttoned cuff, plain silver collar on a blackthorn branch shaft freed from its bark and with naturally black dotted sprigs and a 2 1/4" tall white metal ferrule. Imbued with the sensitivity and skill of the whaler artist and his innate aesthetics, this cane is "Marine Art" at its best. H. 3 1/2" x 2", O.L. 35 3/4"
\$3,000-\$4,000



20. Shagreen and Whale Bone Cane

Ca. 1880-A rarely encountered Anglo-Colonial material cane with a plain L-shaped and substantial whale bone handle on its curio shaft fashioned of a *Dasyatis Sephen* Sting Ray tail with a metal ferrule. The fluting tail shows a prickly scaled and sharply toothed structure of a light muddy-gray-green color and boasts a 6 1/2" tall venom-secreting, barbed spine secured by a metal ring around its tip. H. 4 1/4" x 1 1/2", O.L. 36 1/2"

\$1,600-\$2,000

21. Ivory Globe Cane

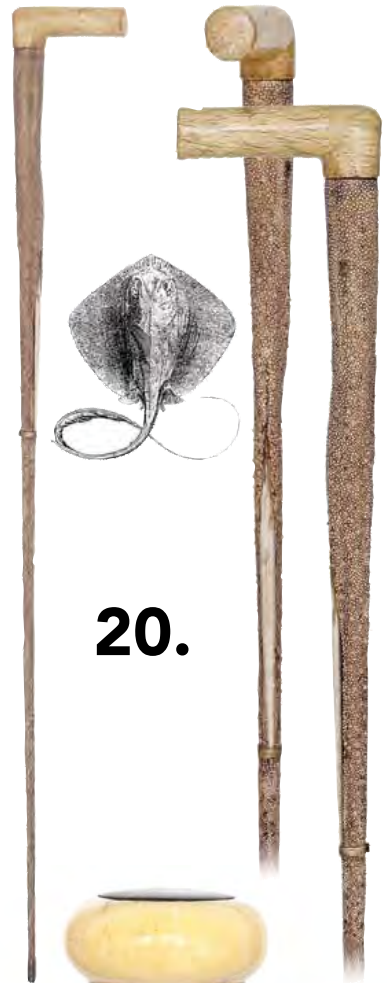
Ca. 1890-Ivory terrestrial globe handle accurately carved in scrimshaw technique with the continents and the oceans and their related appellations, malacca shaft with a metal collar and matching ferrule. The cane survived in good condition and with a superb luster to the ivory handle. H. 2 1/4" Diameter, O.L. 33 1/4"

\$1,200-\$1,800

22. Marine Cane

Ca. 1850-Sperm whale tooth knob turned with a widening top embellished with an inset, round tortoiseshell shield and a longer integral plinth with multiple rings ending in an octagonal configuration. The ebony shaft, which takes over seamlessly the octagonal shape of the knob to continue round and tapering, is itself embellished with flush set longer whale tooth darts repeating on each of its eight sides. H. 2" x 1 1/2", O.L. 32 3/4"

\$1,000-\$1,500



20.



21.



22.

23.



23. Gold Presentation Cane

Ca. 1890-Gold rolled knob densely hand chased with flowers and rich scrollwork and personalized with engraved presentation initials on the top "W.C. from J.W.L." A single piece faux sprig baleen shaft with a metal ferrule connects this cane to the marine world and makes of it a custom made and never seen before singular item. H. 1 ¼" x ¾", O.L. 36" **\$700-\$900**

24.

24. Penguin Nautical Cane

Ca. 1860-A wonderful nautical which includes a figural whale's tooth handle and turned plinth, malacca shaft and a metal ferrule. Extremely rare in the marine repertoire, this cane survived in a very fine condition and with a gentle, age grown patina. H. 5 ¼" x 2", O.L. 35 ¾" **\$1,800-\$2,500**

26.

25. Ivory Four Human Races Cane

Ca. 1890-Large ivory ball handle carved with four male faces representative of the four, "Western, African, Asian and Native American," human races. The faces are well defined, easily identifiable and separated by a bamboo-like stalks and large leaves. Turned ivory collar, Makassar ebony shaft with a, encircling and flush set white metal badge engraved "Grieshaber" and heeled with a white metal ferrule. H. 2 ¼" x 2", O.L. 34 ¾" **\$1,200-\$1,800**

25.



26. Lapis Lazuli Dress Cane

Ca. 1900 -Straight and angled lapis lazuli handle of an appealing spotted structure and blue color, plain and gilt metal collar, ebonized fruitwood shaft and a brass ferrule. Classy and elegant, this was one of Faberge's favorite precious stones. H. 2 ¾" x 1", O.L. 36" **\$400-\$600**

27. Ivory Nude Cane

Ca. 1890-Fine grained elephant ivory Opera handle carved with a reclining nude on each side, malacca shaft with a silver collar and a 2 1/2" long stag horn ferrule. Feminine art at its best with the added value of great feel of age and excellent condition. H. 4 1/2" x 1 1/2", O.L. 34 1/4"

\$1,500-\$2,000

28. Cloisonné Enamel Cane

Ca. 1890-Shippo enamel handle with an elongated and tapering stem topped by a round and widening, flat knob. The handle is decorated with a golden yellow dragon which coils on the stem to end with a colored large head on the knob. The flawless handle is executed in the ancient and traditional way. H. 5 3/4" x 2" O.L. 36 3/4"

\$800-\$1,200

29. Ivory Erotic Cane

Ca. 1890-Large ivory handle showing a reclining nude on one side covered by a rumpled blanket and on the other exhibiting her feminine pulchritude, malacca shaft with a decoratively knotted and gilt, thick metal wire collar and a metal ferrule. H. 5" x 2", O.L. 34"

\$2,000-\$3,000

28.



27.



29.



30.

30. Erotic Knobkerrie Cane

Ca. 1890-Heavy cast and silver plated bronze handle with a young couple twined in an erotic embrace, ebony shaft and a horn ferrule. The passionate depiction is intricate and delicately covers the naughty detail which only appears at a close look.

H. 2 3/4" x 2 1/2", O.L. 37 1/2"

\$1,000-\$1,600

31.

31. Ivory Erotic Cane

Ca. 1880-A very unique ivory handle carved with an erotic scene involving a man with two women, malacca shaft and a brass ferrule. The central panel is arranged in a continuous setting, and, carved in deep relief and fine detail, makes you stare and simultaneously leaves something for the imagination!

H. 3 1/4" x 1 1/2", O.L. 33 1/2"

\$5,000-\$6,000



32. Brigg Figural Hard Stone Cane

Ca. 1900-Large smoky quartz figural knob and its gold collar on an ebony shaft with a horn ferrule. The knob is cut of a limpid stone with intense greyish brown hues to depict a dachshund proudly carrying himself on short front legs. The posture is typical for the breed and exposes a strong protruding sternum, and the elongated head with intelligent and friendly expression has a slight convex skull, arched eyebrows and long muzzle flanked by a pair of hanging ears. A frosted surface imparts the look of the dachshund short fur and, in contrast to the integral and polished, cold base, gives a warmer, softer touch. Two tiny sapphire eyes and a gold chain around the neck add to its character. The quality of the knob is underscored by the yellow gold collar with a "BRIGG" mark beside a full set of English hallmarks for Charles Cook and 9 karat gold. This cane has obviously seen careful handling and is in flawless condition. It redefines the Russian Fabergé genres. Much in the same taste of the cane illustrated in the book "The Robert Pearson Collection" on page 44 that sold at Christies Sale 2435, # 6 in date of April 15, 2011 which set world record prices. Also, see "The Mandel Cane Collection" page 112.

H. 3" x 2 ¼", O.L. 39 ¼"

\$7,000-\$8,000

32.



33.



33. Brigg Ivory Automated Duck Head

Ca. 1890-Naturalistically carved duck head with a naturalistically engraved feather coat, two inset glass eyes and a moving long beak, Cocobolo shaft with a silver collar and a horn ferrule. The mechanics are simple and functional. Except some surface wear and a little damage to the beak, the cane aged well with a great pale color paired with the rightful glorious luminosity to the ivory handle and an age grown, rich patina the well figured shaft. Classic BRIGG cane and illustrated in the reputed London's company catalog of the period. H. 3 ¼" x 2 ½", O.L. 36 ½"
\$1,200-\$1,600

34. Porcelain Figural Cane

Ca. 1850-Porcelain knob well modeled and finely painted to depict a woman's head distinguished by a clearly delineated pure face and strikingly crisp eyes. Plain and wide 18 karat yellow gold knob with London hallmarks beside a "CC" maker's mark, ebony shaft and a horn ferrule. Privileged in terms of materials and workmanship, this cane is from the ending 19th century and superbly preserved. The porcelain knob is of earlier date, most likely Meissen and representative for a period where porcelain was reserved to the very few.
 H. 2 ¼" x 1 ¾", O.L. 37 ¾"
\$1,500-\$2,000



34.

35. Early Silver Gilt Georgian Cane

Ca. 1750 and added collar 1892-Substantial and elongated silver knob hand chased and engraved with three panels within elaborate asymmetrical scrolled framework. The panels are depicted in the Greek antiquity taste to show the figures of Athene with spear as well as her attributes, the gorgon head on her shield and owl under it, the goddess of wisdom, weaving, crafts and war, Aphrodite with mirror and snake, goddess of love and beauty, and Demeter with a fruit basket, goddess of agriculture and green earth. The deities display micro fine detail and suggest, despite a very shallow relief, a striking perspective. The real joy of this knob is it bears an added gilt collar-ring with clear London hallmarks for the year 1892 which possibly records a general restoration when the knob was refitted with the actual malacca shaft and brass ferrule. The "930" sterling. H. 3 1/4" x 1 1/4", O.L. 41 1/4"
\$2,000-\$3,000



35.

36. Top Rate Jeweled Hard Stone Dress Cane

Ca. 1890-Substantial and jeweled rock crystal knob with an 18 karat yellow gold filigree collar and an ebony shaft with a horn ferrule. The knob is cut of a pure stone in a reversed tear drop shape and finely engraved on the its polished surface with frosted and clearly delineated four leaf clover individually embellished with centering small turquoise cabochons set in plain yellow gold frames. The sizeable collar has a matching design with multiple ring borders framing a wider central panel with four repeating panels of delicate filigree applications emphasized by larger, plain, round and centering turquoise cabochons. Packed with luxury and exclusivity this mascot cane survived in pristine condition and with its entire, initial sparkle. The very few known signed similar canes help us assigning this cane with a probability bordering on certainty to the top Parisian jewelers of the Belle Époque like Cartier or Boucheron.
O.L. 38 1/4"
\$6,000-\$7,000



36.

37.



37. Brigg Sword Cane

London hallmarks 1889-Large and stretching silver pommel shape knob hand chased with repeating twirling, vertical bands and engraved at the top with a large "J" initial, ebony shaft and a horn ferrule. Seven and a half inches down from the top, the shaft breaks in two pieces through a simple but efficient friction lock device to release an impressive 17" long, square, tapering and beautifully jeweled steel blade, etched with innumerable stars and signed "BRIGG". BRIGG" signature on the silver knob besides a clear full set of hallmarks and "C.C" maker's mark for Charles Cooke, chief stick mounter for Brigg from about 1888 until his death in 1914. H. 3 1/4" x 1 1/2", O.L. 37 1/2" **\$1,800-\$2,500**

38. Brigg Rock Crystal Rabbit

Ca. 1900-This rock crystal handle is cut of a flawless stone to depict a prone rabbit. The carving takes advantage of a frosted surface that imparts the look of a wooly fur, and, in contrast to the integral, polished and cold base, gives a warmer, softer touch. A pair of inset black sapphire eyes adds a lively touch. Dark rosewood shaft and a matching horn ferrule. The plain and gilt collar is engraved "Mrs ADAM TORBURN / HIGHHAM HALL 4 / ROCHESTER" and stamped "BRIGG, LONDON". Mint condition. H. 2 3/4" x 2 1/4", O.L. 38" **\$3,000-\$4,000**



39.

39. Henry Howell Sword Cane

Ca. 1890-Entirely fashioned of malacca with a crook handle, the cane opens 6 1/2" from the top with a concealed, quarter turn lock device and misaligned sights to release an 28 1/2 in. tall and sturdy, flat forged and polished steel blade with two cutting edges and a pointed tip. The high grade blade is also etched "HOWELL LONDON". H. 6 1/2" x 5", O.L. 36" **\$800-\$1,000**



38.

40. Ivory Stallions Cane

Ca. 1880-Ivory tooth tip carved with six stallion heads at full speed, slim and chased silver collar, malacca shaft and a stag horn ferrule. Lively and spirited composition and praised by long years of careful use.

H 5 ¼" x 1 ¾", O.L. 33"

\$1,800-\$2,600

40.



41. Brigg Dual-Purpose Wheeled Cane

Ca. 1910-Wild life day cane fashioned of a very tall and well-dressed golden hazel branch with an integral crook handle ending with a natural bough carved as a pheasant head. The bird's head is superbly rendered, highlighted with colors and a pair of inset glass eyes and easily transcends his function as walking stick handle. So-Far, so-good, however, what makes this cane unique besides its length is that it is equipped with a larger 5 ½" iron wheel ferrule trimmed with rubber. Indeed, fitted with hooks, the cane enlightens the transport of heavier items. "BRIGG". H. 4 ½" x 3", O.L. 43 ½"

\$800-\$1,000

42.



41.



42. Ivory Louis Wain Cat Violin Player

C. 1890-Larger ivory violin Maestro Cat, upright standing and dressed with a tail coat and vest. The feline holds the instrument in its left front paw and the bow with the right one and shows on the back a long tail coming out from the coat's slit. The motif of the cat is quite rare in the widespread cane repertoire and this exceptional one was probably inspired by the drawing of Louis Wain and is endowed with a poetic license. Malacca shaft with a silver collar and brass ferrule.

H. 6" x 2 ¼", O.L. 37 ½"

\$2,000-\$3,000



43.

43. Porcelain Dress Cane

Circa 1920-Large and well-proportioned Derby porcelain handle painted in 24 karat yellow gold with a different tree on each end and a stylized green branches composition on the neck. The leaves are embellished by scattered golden hounds, wild animals and blooms and topped by a stag and two hounds on one side and a rider following, what seems to be, a centaur on the other. The handle comes with a silver gilt collar and a well-dressed malacca shaft with a metal ferrule. Top of the line German Meissen handle.

H. 5 1/4" x 2 3/4", O.L. 34 1/2"

\$1,200-\$1,600



44.

44. Spectacular Ivory Native American Indian Cane

Ca. 1880-Substantial stretching pistol grip ivory handle embellished with a Chief Head wearing his parade feather head dress. The portrait respects the traditional Red Indian iconography and sport a multitude of fine details and feathers, starting on top of the heads and cascading the wearer's necks. Dark malacca shaft with high ridge and a 4 1/4" long ivory ferrule.

H. 7" x 2 3/4", O.L. 36 1/2"

\$2,000-\$3,000



45.

45. Incroyable Cane

Ca. 1820-Single piece burr wood cane topped by a plain turned, round and flat knob and heeled with a mighty brass and iron ferrule. The naturally bizarre grown cane with a beautiful straight and tapering profile and two ivory eyelets aged to perfection with a well-used smooth and soft surface and the adequate rich and dark tan. It boasts the quirky originality of the "Incroyable Canes" and is a first rate relic of this short lived exuberant period. H. 2" x 1", O.L. 32 1/4"

\$600-\$900

46. Ivory Historic Incroyable Cane

Ca. 1820-Figural ivory handle carved to depict an "Incroyable" young man wearing the eccentric huge neckties, thick, square monocle and a "Bicorne" hat with the hair falling on the ears and bound in a pigtail at the back. Ebony shaft and a faceted silver ferrule. The fine and expressive detail with smooth and soft surface is guided by the hand of a talented artist and exudes the authentic "Muscadin" flavors. The cane has all the elements to help an accurate dating around 1820 and survived in original condition with a superb luster to the ivory.

H. 2 3/4" x 2", O.L. 39 3/4"

\$1,500-\$2,000

46.



47. Incroyable Cane

Ca. 1820-Fashioned of a straight wild vine branch with extreme quirky grown protuberances and a naturally curving bough as handle. Remarkable in every way, this cane is a rare relic of the eccentric outfits of the "Parisians Incroyables" which they referred to as their "Executive Power".

H. 2" x 2 1/4", O.L. 34 3/4"

\$600-\$900

47.

48. Figural Porcelain Cane

Ca. 1890-Large porcelain handle naturalistically modeled to depict Napoleon Bonaparte the worshiped founder and idol of the Grande Nation and shows the General's bust with the customary severe facial traits, customary military uniform and trademark Bicorne hat. The handle is intact and comes on a richly figured rosewood shaft with a gilt metal collar and a stag horn ferrule.

H. 3 1/4" x 2 3/4", O.L. 38 1/4"

\$600-\$800



48.





49.

51.



49. Ivory Ball and Claw Cane

Ca. 1870-One-of-a-kind ivory ball and eagle claw cane in giant size and quality, ebony shaft with a plain turned ivory collar ring and a stag horn ferrule. It aged well with the right amount of wear to increase its appeal and not diminish its value, has an expertly secured crack and boasts a glorious and luminous surface.
H. 7 1/2" x 2 1/2", O.L. 37 1/2"
\$1,000-\$1,600

50. Mascot Paperweight Dress Cane

Ca. 1860-Flattened mushroom millefiori glass knob beautifully displaying various canes made from colored rods to resemble little flowers, malacca shaft with a metal collar and a horn ferrule. Intact.
H. 2" x 2", O.L. 36 3/4"
\$600-\$900

51. Ivory Dieppe Cane

Ca. 1870-19th Century-Long ivory handle fashioned in a straight and tapering configuration of a single piece of fine grained material and delicately carved in high relief with climbing flower tendrils, roses and rose leaves. The intricate composition is topped by a large bloom and personalized by an oval shield with the initials "BE" of the cane's first owner. French ivory art at its best.
H. 9 1/4" x 1", O.L. 38 1/2"
\$800-\$1,000

52.

50.



52. Silver Art Nouveau Dress Cane

Ca. 1910-Long silver handle topped by a tapering loop ending with a flower, ebony shaft and a metal ferrule. The upswept petals of the flower show some traces of gilding and speak for a cyclamen, and, the floral twig with buds applied on the vertical stem hints in that direction as well. German hallmarks. H. 7" x 3", O.L. 36 1/4"
\$800-\$1,200

53. Ivory Three Wise Monkeys Cane

19th Century-Ivory ball handle naturalistically carved with three monkeys squatting side by side to depict the Asian saying "See no evil, hear no evil, speak no evil". The knob comes with its longer ivory collar turned with multiple rings and a malacca shaft and a metal ferrule. French parentage.
H. 2 3/4" x 2 1/4", O.L. 36 1/4"
\$1,200-\$1,800

54.

54. Meissen Porcelain Dress Cane

Circa 1880-Long cylindrical porcelain handle finely painted with two elaborate flower compositions within rich gold moriage and scattered blooms framing and a blue fish scale border on each side. The handle is topped by a crown like knob set with Rhine stones, few missing, and fitted with the matching collar. Well figured Cocobolo shaft with rich brown hues and a horn ferrule.
H. 5 1/2" x 1", O.L. 36 1/2"
\$600-\$800

53.



55. A Great Example of the Admired Ivory Duck Head

Ca. 1890-Large ivory handle naturalistically carved to depict a duck head, well streaked and richly colored rosewood shaft with a braided metal wire collar and a stag horn ferrule.
H. 4 1/2" x 2 1/2", O.L. 38 3/4"
\$1,500-\$2,000

55.



56.

56. Gold Nobleman's Cane

Ca. 1800-18 karat yellow gold knob fashioned in a well-proportioned classic shape with a tapering body and slightly domed round top entirely engraved in the Renaissance with the finest scrolls and fitted with an integral ring collar chased en suite. Well-dressed malacca shaft and a horn ferrule. Fine condition.
H. 1 1/2" x 1", O.L. 37"
\$800-\$1,000



57.



57. Ivory Piqué Cane

Queen Ann Period, (16)98-Ivory knob turned in a stretching pommel shape and ornate on the top with a piqué round crown framing the "G.M." initials above the date (16)"98". The piqué crown repeats on the collar of the knob and frames, in a smaller size, the two silver eyelets. The knob and its heavily worn silver collar come on their initial malacca shaft with a 3" tall stag horn ferrule. This good example of a desirable and rare type of canes has obviously been used over very, very long years.

H. 3 3/4" x 1 3/4", O.L. 32 1/2"
\$800-\$1,200

58.



58. Early Silver Nobleman's Cane

Second Half of the 18th Century-Substantial Derby silver handle well modeled and extensively hand chased and engraved with scrolls, foliage and flowers ornaments, malacca shaft and a metal ferrule. The handle, astrides Baroque fluency and flamboyant Rococo, embodies the prevailing taste of the day. H. 5" x 2 3/4", O.L. 31"

\$800-\$1,200

59.



59. Ivory Piqué Cane

Queen Ann Period, Ca. 1700-Ivory knob turned in a well-proportioned pommel shape and ornate with piqué stylized blooms and "C" scrolls on the side and corresponding pattern on the top, malacca shaft with wide brass collar and a sizeable metal ferrule. Its knob with pretty much of its silver dots shows fascinating character lines and the shaft a matching candied surface with a rich patina.

H. 2 1/4" x 1 1/4", O.L. 35 1/4"
\$800-\$1,200

60. Ivory Religious Cane

Ca. 1840-The single ivory piece handle is turned in a straight shape with integral flattened top and ring collar and engraved on its elongated cylindrical body with what seems to be the "Anointment of Paulus". The continuous scene displays a lively and minutely detailed carving and shows Jesus facing Paulus leaning on his pastoral staff against a background with a house and water mill on the side of a small river with a bridge all embedded in an idyllic forest landscape with large trees associating to God, spirituality and the eternal life.

H. 3 1/2" x 1 1/2", O.L. 35"

\$1,500-\$2,000



61. Silver Dress Cane

Dated 1892-L-shaped silver handle with a pointed hand rest chased with a twirl and an integral, plain and tapering collar engraved "Weihnachten 1892" which translated "Christmas 1892". The handle is validated with a clear set of Austro-Hungarian hallmarks and comes on a fine grained and closed pored rosewood shaft with a horn ferrule. Viennese Imperial.

H. 3 1/4" x 2 1/2", O.L. 35 3/4"

\$400-\$500

62.



62. Saint Cloud Porcelain Cane

Ca. 1750-Early porcelain knob modeled in a formal, slightly stretching pommel shape and round top, decorated a la Berain in cobalt blue with two encircling flower panels of Far-Eastern inspiration on the side and a radiating bloom on the top. The knob withstood the test of time intact and with its entire glaze while the malacca shaft and its metal ferrule.

H. 1 3/4" x 1 1/4", O.L. 35"

\$1,200-\$1,800

61.





63.

63. Ivory Turkey Cane

Ca. 1880-Large ivory handle carved to depict a full bodied turkey, well-dressed malacca shaft with a turned ivory collar and ivory ferrule. The big bird is rendered with great care, shows beautiful proportions, a very fine feather coat and delicate undercuts and above all, fits well in the hand.

H. 4" x 3", O.L. 37"

\$1,500-\$2,000



64. Cloisonné Enamel Cane

Ca. 1890-Shippo enamel handle with a flattened ball top on an integral, long and tapering stem, ebonized hardwood shaft and a brass ferrule. The knob is decorated with pastel colored blooms.

H. 9 1/2" x 1 1/2", O.L. 36"

\$400-\$600

65.

65. Ivory Erotic Cane

Circa 1890-Very unique ivory ball knob carved in low relief with an erotic motif. The vintage depiction is in the taste of the days of yore, and, in the best Victorian tradition, makes you stare and simultaneously leaves something for the imagination. The knob exudes a charm of its own and comes with its turned ivory collar and an ebony shaft with a stag horn ferrule.

H. 2 3/4" x 2", O.L. 36 3/4"

\$1,000-\$1,500



64.

66.

66. Meissen Porcelain Cane

Ca. 1870-Stretching pistol grip white porcelain handle decorated in cobalt blue with the classic, "Zwiebelmuster" or Onion Pattern, ebonized shaft with a metal collar and a brass ferrule. The effortlessly elegant look and feel of the handle as well as its decoration are what one can expect from the world leading porcelain manufacture from Germany. -The cane is stunning to look at, comfortable to hold, and a dream to wear it. The "Zwiebelmuster" or Onion Pattern.

H 3" x 3/4", O.L. 36 3/4"

\$500-\$600



67. Ivory Naughty Leg Cane

Ca. 1875-Large ivory handle carved of one piece of fine grained material to depict a feminine leg with garter and buttoned boots, malacca shaft with a grooved metal collar and a metal ferrule. This mildly erotic cane distinguishes with the Victorian accent everyone loves.

H. 6 1/2" x 2 1/2", O.L. 37 1/2"

\$1,200-\$1,600

68. Silver Dress Cane

Ca. 1890-Derby-shaped silver handle hand chased and engraved with opulent Baroque scrolls and shells, ebony shaft and a horn ferrule. Slightly obscured hallmarks on the handle's rim besides a "BD" maker's mark attest for an English-London origin.

H. 4" x 2 1/2", O.L. 36 3/4"

\$500-\$700

69. Ivory Elephant Cane

Ca. 1890-Substantial ivory elephant head handle carved with large ears and tiny eyes and a bent trunk flanked by two mighty tusks, richly figured rosewood shaft with a turned ivory collar and a horn ferrule. This top range cane was obviously well cared for and is praised by an attractive, light bleached surface.

H. 4 3/4" x 2 3/4", O.L. 37 3/4"

\$1,500-\$2,500

70. Porcelain Indoor Cane

Circa 1890-Long cylindrical porcelain handle finely painted with a gallant scene framed by rich gold moriage on a pale purple background. The porcelain part is complimented with a substantial gilt knob and matching collar both hand chased in the Revival taste and a flamed lemonwood with a metal ferrule. Fine and beautiful French porcelain art and loaded the entire fin de siècle splendor.

H. 7 1/4" x 1 1/2", O.L. 38 1/2"

\$700-\$900

67.

68.



70.



69.



71.

71. Erotic Ivory Ball Cane

Ca. 1900-This is the very best carving that we have seen in this style. The two very, very daring and vibrant scenes within sphere are expertly deep and lace-like carved with extraordinary facial expressions and body language. The hinge is very good and tight on this example with an ebonized hardwood finely chased silver collar and a metal ferrule. So far, so good, however, what makes this cane more special, is the ribbed surface of the ivory knob which gives it the appearance of a clam centered by pine needles and pine cone.
H. 2" diameter, O.L. 36 1/2"
\$5,000-\$7,000



73.

72. Silver and Ivory Art Nouveau Dress Cane

Ca. 1900-Elegantly fashioned L-shaped handle featuring a silver part well modeled and finely hand chased with different Art Nouveau floral on each side fitted with a plain ivory hand rest fashioned of the tip of an elephant tusk. Stepped partridge shaft with secured natural shrinkage and a metal ferrule. H. 4 1/4" x 2 1/2", O.L. 38"
\$500-\$700

72.

73. Ivory Nude Cane

Ca. 1890-Pistol shaped ivory handle carved in low relief with a down kneeling girl, select malacca with silver collar and eyelets and a stag horn ferrule. This simple nude stand out from the rest, its pure approach provides great focus on the body itself without much distraction. It's just the woman, her curves, her sensuality and nothing else. Furthermore, its subtle and genuine sexuality Venus is endorsed by the light bleached and its immaculate surface of the handle.
H. 3 1/2" x 2 1/2", O.L. 36
\$1,200-\$1,600

74. Silver Art Nouveau Dress Cane

Ca. 1910-Delicate silver handle fashioned in a vertically stretching shape with an oval top set at an angle and hand chased with various foliates, ebonized fruitwood shaft and a metal ferrule. Great Art Nouveau is on display here and authenticated by two full sets of German silver hallmarks. H. 7" x 3 1/2", O.L. 37" **\$500-\$600**

75. Ivory Erotic Dress Cane

Ca. 1900-Ivory crook handle depicting the intimate organ of a man, well streaked and richly colored rosewood shaft with a slender beaded silver wire ring collar and a stag horn ferrule. H. 4 1/4" x 3 1/4", O.L. 37" **\$900-\$1,200**

76. Hard Stone Dress Cane

Ca. 1920-Large opaque red jasper ball knob of a striking grainy structure with a natural crystallized whitish layer-band, dark rosewood shaft with a yellow metal collar and a horn ferrule. -Generally seen as mascots. Today, red jasper is still known as the stone of endurance, a gentle, but vital energy stimulator. H. 2" , O.L. 37 1/2" **\$400-\$500**

77. Ivory Nude Cane

Ca. 1900-Ivory handle fashioned of a blameless piece of fine grained material to depict a seated nude, ebony shaft carved with a twist and a metal ferrule. Reverently reproducing the classic shape of the Venus, this handle was created with the sole intention of portraying the nude body as art and is timeless grace at its best. The subtle and genuine sexuality of the portrayed woman is endorsed by the light bleached and immaculate surface of the ivory: It's just the woman, her curves, her sensuality and nothing else. Pretty much in the taste of Ferdinand Preiss, if not by the artist himself this cane belongs to his close circle. H. 3 3/4" x 2 1/4", O.L. 37 1/2" **\$2,000-\$3,000**

75.

74.

76.

77.



78. Porcelain Indoor Cane

Ca. 1850-Classic pommel shaped porcelain knob hand painted in vivid colors with four flower arrangements on the side and a fifth one "en suite" at the top, longer malacca shaft with eyelets and leather loop and mighty metal ferrule. The knob boasts all the translucency qualities of porcelain, defied time with great pride and survived nearly two centuries of age in mint condition and with its entire original spark. Could be either French or German.

H. 1 ¾" x 1 ¼", O.L. 38"

\$800-\$1,200



79.

79. Ivory Venus Cane

Ca. 1900-L-shaped Walrus ivory handle with a standing Venus shielding her breasts with crossed arms at the front, Art Nouveau metal collar, rosewood shaft and a stag horn ferrule. This cane is pure beauty and grace and the overall effect is one of subtle eroticism. H. 6 x 4 ½", O.L. 37 ½"

\$1,000-\$1,600



80.

80. Automated Dog Head Cane

Ca. 1900-Fruitwood handle naturalistically carved in the shape of a French bulldog's head with inset glass eyes, malacca shaft with a long hair bounding collar and a long horn ferrule. The lower jaw is hinged and can be articulated with the lever under the chin. Once depressed, the dog opens his mouth to show a red tongue framed by a row of sharp teeth. If the lever is suddenly dropped, it produces a penetrating, barking-like noise. working condition. -For similar pieces see C. Dike, Cane Curiosa, chapter 18, Gentlemen canes, page 190.

H. 4 ¾" x 2 ¼", O.L. 35 ¼"

\$700-\$900

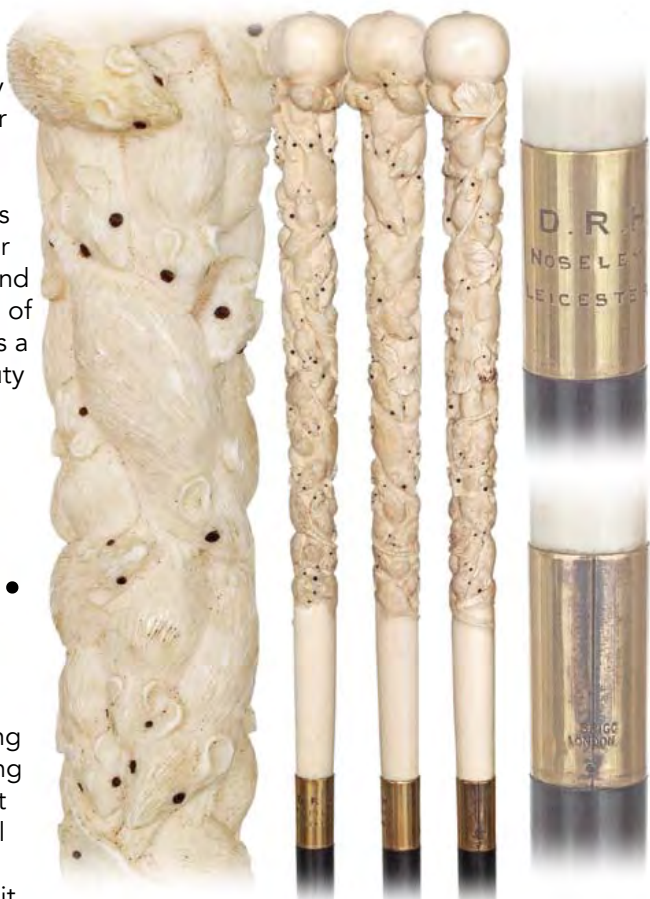


81. Ivory Brigg Rats Cane

Ca. 1890-Straight and very long ivory handle entirely carved with rats and topped by a pumpkin, gilt collar engraved "D.R.H. Noseley. Leicester." on one side and stamped "BRIGG and LONDON" on the other, ebony shaft and a 3 3/4" tall bone ferrule. The rodents are naturalistically depicted packed over one another in painstakingly fine detail including hairy fur coats and long tails. Dark inlay in the eyes add another portion of liveliness. A privilege to hold in the hand, this cane is a one-of-a-kind work of art where function meets beauty and retailed by Brigg, the pinnacle of English luxury cane brands and a distinguished one in the annals of cane history. It has the allure of a staff and is Meiji craftsmanship at its very best.

H. 10 1/2" x 1 1/4", O.L. 40 1/2"
\$1,500-\$2,000

81.



82. Folk Art Cane

Ca. 1880-Fashioned of a single piece of hardwood with a plain turned ball knob on a cylindrical plinth with multiple integral collars followed by a 29 1/2" long tapering part engraved in high relief with an encircling oak twig with oak leaves and acorns topped by, what seems to be, a pigeon. The cane still retains its initial metal ferrule, a black cord with a substantial tassel and aged well with a rich, dark patina. Furthermore, it enjoys the merits of a documented provenance having belonged to Friedrich Jahn, born June 1st, 1868 in Niederlepta (Anhalt-Germany) son of pastor Friedrich Jahn, graduate of the "K. W.-A." Emperor Wilhelm Military Akademie on May 9, 1893 and promoted to assistant physician on July 25, 1893, married on December 15, 1896. He elevated in status to become the leading battalion medical doctor of the 7. Infanterieregiment No. 142 of the historical German territory of Baden, infanterie regiments in Dessau as well as the 50. Prussian king regiments. Thence by descent.

H. 6 1/2" x 1 3/4", O.L. 37"
\$700-\$900

82.

83.



83. Figural Art Nouveau Ivory Cane

Ca. 1900-Ivory knob carved to depict the bust of a young woman with a shawl, dark rosewood shaft and a long stag horn ferrule. Although the woman seems deep in thought and with down looking eyes, her face with an enticing, dreamy expression, engages the viewer in a sensuous visual dialog. Elegant and seductive, this cane is pure beauty and grace and a gem of Art Nouveau artistry. H. 3 1/4" x 1 3/4", O.L. 39"

\$700-\$900





84.

86.



84. Folk Art Cane

Dated 1859-Fashioned of a single piece, straight wild cherry branch with a naturally grown curving top carved with a snake coiled on leafage. Initial copper ferrule. The reptile shows a finely scaled body ending with a larger head biting an apple and emphasized with an inset glass eye. The handle is furthermore personalized with the raised engraved initials "LB" and the larger date "1859".

H. 5" x 5", O.L. 36 3/4"

\$700-\$900

85.

85. Figural Ivory Parade Cane

Ca. 1880-Giant ivory knob fashioned in a vertical configuration of a single piece of blameless material and carved in high relief with a knight on horse fighting a lion. Faux sprig ebony shaft with a belt and buckle ivory collar and a metal ferrule.

H. 7 1/4" x 1 1/2", O.L. 36 1/4"

\$1,200-\$1,800

87.



86. Hard Stone Dress Cane

Ca. 1920-Rutile quartz knob cut in a well-proportioned oval shape with a strong tapering body and a wide angled top, engine turned silver collar, mahogany shaft and a metal ferrule. Luxurious and trendy, this cane draws its elegance from a clear design and color combination. Fortunately it survived intact and is as attractive as on its first day. Possibly French.

H. 1 3/4" x 1 1/2", O.L. 39"

\$400-\$600



87. Ivory Art Nouveau Cane

Ca. 1900-Ivory head of a ballet dancer with a tight cap and frilled collar, turned ivory collar with an integral rope pattern ring, dark rosewood shaft and a stag horn ferrule. The head shows delicate features and reflects the gracious flair of choreographed theatrical dancers.

H. 2 1/4" x 2", O.L. 38 1/2"

\$800-\$1,000

88. Silver Art Nouveau Dress Cane

Ca. 1910-Vertical silver handle with a gracious triangular loop top modeled with wrapping foliage ornamentation on a plain and stretching cylindrical stem, ebonized fruitwood shaft and a metal ferrule. Best Art Nouveau is on display here and authenticated by a full set of German hallmarks including a "GESCHÜTZT" which means Patent. The cane was carefully used and is in need of some surface cleaning.

H. 8" x 2 1/2", O.L. 37"

\$500-\$700

89. Ivory Portrait Cane

Ca. 1890-Larger ivory handle carved to depict a young woman with saddened and demure expression on the face wrapped by a knotted scarf, ebony shaft with a white metal collar and a stag horn ferrule. Tears in the eyes speak strong internal emotions and eventually serious sorrows. H. 5" x 1 1/2", O.L. 38 3/4"

\$800-\$1,000

90. Ivory Erotic Panel

19th Century-The very best erotic carving in a hardly encountered size and quality. The carving is very deep, three dimensional with many undercuts and done in microscopic detail. We show in the illustrations on the internet catalogue a set of regular shots and one against the light. 4" x 2 1/2"

\$5,000-\$6,000



89.



90.



88.



91.

91. Spectacular Ivory Eagle and Snake Cane

Ca. 1880-Substantial ivory knob carved in fine and naturalistic detail to depict an eagle biting a serpent, ebony shaft adorned with extensive ivory dot inlay, carved with a longer twist and heeled with a tall stag horn ferrule. The profile of the handle speaks for an Anglo-American origin while the adorned shaft seems to have Indian ties. In any case, the entire cane aged well and with a rich and uniform patina. H. 4" x 2 1/2", O.L. 36 1/4"

\$2,000-\$3,000



92.

92. Hard Stone Figural Mascot Cane

Ca. 1890-Single piece Eosite, often called red jade, handle of intense pink color fashioned in a stylized pistol shape and carved to depict a prone pig atop a plain plinth. The large and fat domestic animal shows the typical large head with long snout and dawn falling, long ears covering two eyes with inset sapphires cabochons, hooved toes on each trotter and the trademark, curly, short tail. The contrast between the humbleness of the subject and the luxury of the constituent materials hints to a Russian origin in the taste of Fabergé and adds to its charm. It belongs to the upscale jewelry Objects of Virtue and survived intact, well cared for and in original condition with its braided silver wire collar and ebony shaft with a horn ferrule.

H. 3 3/4" x 3", O.L. 38 1/2"

\$3,000-\$4,000

93. Ivory Panther Cane

Ca. 1900-Ivory handle carved to depict a prone panther, fine grained rosewood shaft with a plain silver collar struck with obscured Birmingham hallmarks and a stag horn ferrule. The dynamic and strong design is pure untamed beauty. It captures the spirit of the large and wild feline, its mythical dynamism and agility and has a particular resonance to wild life lovers. The cane aged well with an emphasizing creamy patina to the ivory and matured, dark patina to the wood shaft. H. 4 1/4" x 1 1/4", O.L. 38"

\$900-\$1,200

94. Feminine Art Deco Dress Cane

Ca. 1920-Vertical silver handle with a stretching stem expanding in a triangular loop characterized with bursting, geometric lines, ebony shaft and a white metal ferrule. The symmetry of this design happily reminds us of what Art Deco, the last of the golden age of cane making, was capable of producing. The handle is authenticated with the German half-moon and crown hallmark for silver beside an "800" for the precious metal title and an unidentified maker's mark as well as a "37" possible serial number. H. 7 1/2" x 3 1/4", O.L. 37 1/4"

\$400-\$600

95. Ivory Fist and Knob Cane

Ca. 1860-Ivory handle carved to depict a right hand holding a straight knob ending with twist rope collar. The well-proportioned hand shows beautiful long fingers and emerges from a plain cuff also with a twist rope collar to extend in a widening and regularly ribbed pommel centered by a stylized flower. The handle comes on an ebony shaft carved with a twist over its entire length and fitted with an ivory ferrule. Way out of the ordinary, this particularly handsome example of a much admired motif stands out with an uncommon, careful design and precise carving in high relief. The theme of the hand has been often the subject of many experts and is generally taken for a Free Mason's attribute. H. 4" x 1 3/4", O.L. 35 1/4"

\$1,000-\$1,500

93.



95.



94.





97.



96. Silver Art Nouveau Dress Cane

Ca. 1910-Delicate silver handle fashioned in repoussé and chasing in a vertically stretching bamboo stalk topped by oval soot with leaves, ebony shaft and brass ferrule. Great Art Nouveau is on display here and authenticated by a full set of German silver hallmarks beside a "GESCHÜTZT" which means patent. The direct inspiration of nature is expressed here forthrightly in the unmistakable, gloriously flowing and immortal Art Nouveau taste. H. 7 3/4" x 3 1/4", O.L. 36 1/2" **\$500-\$600**

97. Intriguing Marine Cane

Ca. 1860-Sperm whale tooth handle fashioned in the shape of a flanged spool in an open, cage-like shape with a cylindrical central pillar and seven spikes presented on an equally long, dark brown snake wood stem. Single piece plain and tapering whale bone shaft with a longer bronze ferrule. Inspired by a fishing reel or possibly intended to be an angling device, it surely reflects the clarity of design and appeal of sailor's art, born of the solitary and spartan life at sea. Refer to Youssef Kadri's book, The Mandel Cane Collection, pages 195 to 201. H. 2 1/2" x 1 1/4", O.L. 36" **\$1,500-\$2,000**



96.



98.

98. Ebony and Ivory Cane

Ca. 1890-Marine inspiration is apparent on the profile of this cane with an artistically turned and carved L-shaped ebony handle with ivory inlay and an ebony shaft turned with nods to simulate bamboo and fitted with an ivory ferrule. H. 4 1/4" x 5 3/4", O.L. 36 1/2" **\$600-\$800**

99. Dual Purpose Bone Cane

20th Century-Larger bone handle carved to depict a sea monster with a coiling and scaled, snake like body with a globe in its wide open mouth. The plain globe is decorated in scrimshaw technique on the top with a windrose with the eight principal winds and on the side with a mariner at land looking in the distance to the sea with three fully masted sailboats, sea gulls and two diving whales. The top is fitted with a simple but efficient concealed locking device and rotates to open and reveal a quality and fully working compass. Hardly encountered iron wood shaft with a natural two colored structure which extends in a linear configuration over its entire length.

H. 5 ¼" x 1 ¾", O.L. 37 ½"
\$700-\$1,000

99.

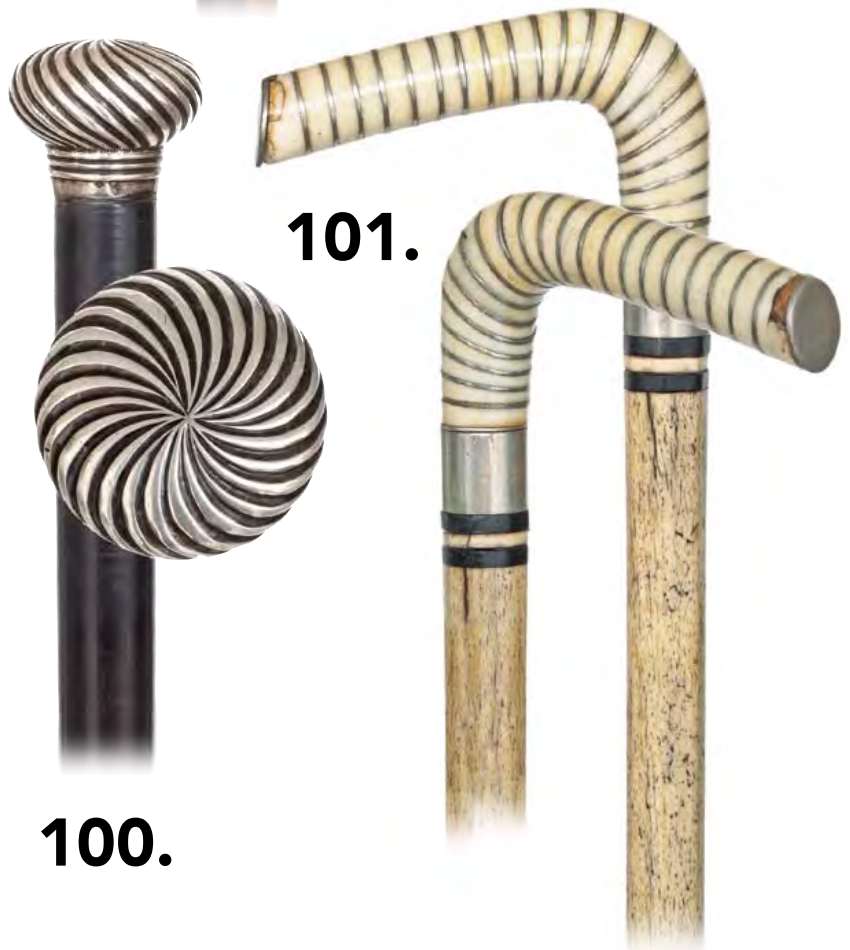


100. Decorative Silver Day Cane

Ca. 1880-Featuring a round and flattened silver knob hand chased with a twirling pattern and fitted with a short neck with three encircling rings and a shaft made of paper washer tightly piled on a steel core fitted with a steel ferrule. Beautiful and somehow intriguing, this 19th century cane survived entirely intact with a wonderful smooth feel and bright surface to the silver handle and adequate dark tan to the shaft with a striking stiffness.

H. 1 ½" x 1", O.L. 35 ¾"
\$400-\$500

101.



101. Marine Cane

Segmented whale tooth ivory and white metal L-shaped handle, white metal collar over 3 baleen and whale bone washers, single piece whale bone starting octagonal and tapering round. Baleen ferrule. Whaler arts.

H. 3 ½" x 2", O.L. 35 ¾"
\$1,000-\$1,500

100.



102. Tula Silver Dress Cane

Ca. 1900-Well-proportioned Tula silver crook handle with a stretching neck totally decorated in a repeating, micro Fleur de Lys and diamond pattern and personalized with the "HB" engraved initials of its first owner. The handle is authenticated with the "Half-Moon and Crown" German hallmark for silver besides a "900" for the precious metal title and a "WB" maker's mark. It survived intact and comes on its ebony shaft with a brass ferrule.

H. 7 3/4" x 3 1/2", O.L. 38 1/2"

\$600-\$700

103. Whale Bone and Mother of Pearl Cane

Ca. 1880-Fashioned in a plain and tapering configuration with 7 whale bone segments alternating with 6 flush set joining mother of pearl washers and topped by a round knob of layered whalebone centered by mother of pearl inlay. Sailor made.

H. 22" x 1", O.L. 37"

\$900-\$1,200

103.

104.

102.

104. Commemorative Dress Cane

Dated "1890-(18)93"-Longer and slightly tapering cylindrical silver knob on a beautifully streaked and richly colored rosewood shaft with a horn ferrule. The knob is engraved on the side with 12 names "F. Haas, G. Vértesy, Ph. Kodolitsch, G. Windisch Graetz, K. Bienerth, A. Lago, L. Horodyski, K. Handel, A. Vassilko, F. B. Lobkovitz and R. Pfisterer" and on the top "1890-93". Obviously commissioned to celebrate a special event, this one-of-a-kind cane survived intact and is authenticated from the long gone Imperial period by two small Austro-Hungarian hallmarks on the knob's lower rim.

H. 2 x 3/4", O.L. 37"

\$500-\$600



105. Ivory Figural Swan Cane

Ca. 1890-Large ivory handle fashioned in a vertical configuration of a blameless piece of fine grained material to depict a swan on reed. Plain silver ring collar, ebony shaft and a stag horn ferrule. The aquatic bird is naturalistically rendered with a long, bent neck, two raised wings beautifully displaying a magnificent feather coat and gives the impression to be floating, graciously carried by a smooth breeze. H. 4 3/4" x 2 1/2", O.L. 40"
\$1,600-\$2,000



105.

106. High Button Shoe Cane

Ca. 1900-Britannia metal shoe handle with exposed toes, dark rosewood shaft and a horn ferrule. Charming and understated mascot cane, most likely from the Glauchau manufacturers near Leipzig in Germany. -Britannia alloy was first manufactured in Great Britain. H. 4 1/2" x 4 3/4", 35 3/4"
\$400-\$600

107. Ivory Hand and Ball Cane

Ca. 1880-Classic ivory hand and ball knob on a tapering turned, long plain plinth, white metal collar, ebony shaft and a stag horn ferrule. The carving is strong and full of expression and graded by wear, color and character lines. The theme of the hand has been often the subject of many experts and is generally taken for a Free Mason's attribute. H. 5" x 2 1/4", O.L. 38"
\$400-\$600

107.

108. Dual Purpose Music Cane

Ca. 1900-Ebony flute with nickel silver collar and cap, ebonized shaft and a white metal ferrule. The flute is attached to the shaft with a simple but efficient friction locking device, survived in excellent condition and can play fine music in the right hands. Flute 15 3/4" x 1", O.L. 41"
\$600-\$800



108.



106.





112.



111.

109. Silver and Bone Vesta Cane

Ca. 1880-Vertical handle fashioned of a longer and stretching bone body carved in the shape of a right hand holding a horse leg topped by a silver horse hoof, rosewood shaft and a stag horn ferrule. The bone body is knobby and embellished with dark, dot horn inlay, while the hinged silver hoof is profusely engraved with scrolls and flips open to show a deep contained-cavity for the matches. H. 4 1/2" x 1 1/4", O.L. 37"
\$700-\$900

110. Ivory Owl Container Cane

Ca. 1890-Well and micro carved owl perched on a book over a larger cylindrical stem, well figured malacca shaft and a stag horn ferrule. The owl shows the typical flat face with large forward-facing eyes and conspicuous circle of feathers around each eye, ear-holes with upright feathers, a hawk-like beak. It pulls out to reveal a cavity in the cylindrical stem which might have been intended for snuff tobacco or drugs. H. 3 1/2" x 1", O.L. 39 1/4"
\$700-\$900



110.



109.

111. Feminine Silver Dress Cane

Ca. 1890-Silver handle hand chased and engraved with various panels of different flowers, scrolls and shells on its stretching stem and with a crown of flowers on the round and flattened knob, mahogany shaft and a copper ferrule. Superb condition. H. 3" x 1", O.L. 40 1/2"
\$300-\$500

112. Ivory Container Cane

Ca. 1880-Larger ivory knob fashioned in a stylized tower shape on a malacca shaft with a metal ferrule. The handle is threaded and detaches to reveal a deep cavity concealed in the shaft which could have been intended as a container for snuff tobacco or a cigar. H. 2 1/4" x 1 1/2", O.L. 37 1/4"
\$500-\$600

113. Silver Day Cane

Ca. 1890-Substantial L-shaped silver handle with a slightly arched and pointed hand rest delicately engraved with a pebble pattern and the predestined name of its first owner "Stein" (Stone) on a shield, ebony shaft and a metal ferrule. The typical Viennese profile of the handle is validated with two clear Austro-Hungarian hallmarks on its integral, plain and long collar. H. 3 1/2" x 2 1/4", O.L. 31 1/2"

\$300-\$400

113.



114.

114. Ivory Lion Cane

Ca. 1880-L-shaped ivory handle carved in the taste of the Roman statuary with a large lion mask and Vitruvian scrolls. Malacca shaft with a metal collar and an ivory ferrule. Used but not abused, this cane boasts a powerful presence and aged well and with a uniform and glazed patina. H. 6" x 4 3/4", O.L. 34 1/4"

\$700-\$900



115. Dog Head Cane

Ca. 1920-Naturalistically modeled and bronze cast retriever head with a short muzzle, long floppy ears and two small eyes disclosing the qualities of the breed and willingness to please, learn, and obey on a well-dressed Golden Ash branch shaft with a metal collar and ferrule. Great countryside cane embellished with a warm toned age patina. H. 2 1/4" x 2 1/2", O.L. 36"

\$200-\$300

115.



116. Figural Hard Stone Dress Cane

Viennese, Ca. 1890-Single piece naturally opalescent girasol quartz handle depicting a cat seated on a plinth with braided silver wire collar and ebony shaft with a horn ferrule. The feline character takes advantage of the frosted surface against the polished one of the plinth and two inset black eyes add interest and liveliness to the cat's rendering. This one-of-a-kind cane is in the Fabergé Russian Style and belongs to the upscale jewelry Objects of Virtue. It has obvious seen careful use and, despite a great fragility, survived an entire century in mint condition. -For a similar cane see Youssef Kadri's book, The Pearson Cane Collection, page 48. - Dark veining with many different hues. H. 3" x 2 1/4", O.L. 39 1/2"

\$2,000-\$3,000

116.

117.



119.



117. Ivory Cat Cane

Ca. 1890-Substantial ivory handle carved with a grooming cat on a short and integral plinth. Obviously, the creating artist took his time studying the cat anatomy and behavior and succeeded to endow his one-of-a-kind creation glorious proportions and the greatest of an affectionate feline expression. Malacca shaft with a plain silver collar and a stag horn ferrule. Careful handling is apparent in the profile of this cane with a uniform tan patina to the ivory and glazed surface to the shaft. The silver collar in need of some cleaning. H. 3 1/2" x 2 1/4", O.L. 38 3/4" **\$1,400-\$1,800**

118. Silver Day Cane

Ca. 1890-Large L-shaped silver handle with a slightly arched and pointed hand rest well chased and engraved in the Baroque taste with rich scrolls, flowers and other decorative elements, ebonized hardwood shaft and a metal ferrule. The different but perfectly matched patterns on each side speak for a singular and handmade handle which is authenticated by three Austro-Hungarin. H. 3 3/4" x 2 3/4", O.L. 32" **\$300-\$400**

118.



119. Ivory Rabbit Head Cane

Ca. 1900-L-shaped ivory handle ending with a long eared rabbit head, wide and profusely chased silver collar engraved "FROM/G.E. MOSSES/HIGHER BEBINGTON/TO/F.BRADSAW" and struck with Birmingham hallmarks 1898, dark rosewood shaft and a horn ferrule. H. 4" x 1 1/2", O.L. 35" **\$500-\$700**

120.



120. Silver Dress Cane

Ca. 1880-Long, vertical and tapering silver handle totally hand chased and engraved with scrolls, foliage and blooms, coco palm wood shaft and a brass ferrule. An exceptional size paired with a high relief and fine surface detail make of this scepter-like Anglo-Indian Kutch cane a desirable and first rate collectable. H. 7 1/4" x 1", O.L. 35 1/4" **\$400-\$600**

121. Ebony and Ivory Dress Cane

Ca. 1870-Longer and straight ivory handle topped by a widening integral pommel finely engraved with acanthus leaves centered by an inset mother of pearl roundel on a superbly figured Makassar ebony shaft with a metal ferrule.
H. 3 1/2" x 1 1/4", O.L. 35 1/4"
\$400-\$600



121.

122. Silver Day Cane

Ca. 1910-Very long sliver crook handle with a hammered surface and flattened hand rest, ebony shaft with brown hues and a brass ferrule. The handle is authenticated with the struck national silver Reichsmark of a "Crescent Moon & Crown" representing the entire German state in conjunction with an "800" decimal silver standard marks. Very elegant cane and intact.
H. 10" x 4", O.L. 34 1/2"
\$300-\$400



123.

122.

123 Ivory Cat Head Cane

Ca. 1880-Large ivory ball knob carved with the portrait of a cat, engine turned silver collar with feathery engraved initials and a Malacca shaft with a stag horn ferrule. The portrait is distinguished by two large eyes, a pair of upwards extending, prominent ears and long whiskers and is possibly inspired by the drawings of Louis Wain. In any case, the cane aged well and with an emphasizing, rich and warm toned patina. H. 2 1/4" x 2 1/4", O.L. 35 3/4"
\$900-\$1,200



124.

124. Hard Stone Dress Cane

Ca. 1920-Sardonyx ball knob with a fascinating, natural black and white layered structure, ebonized hardwood shaft with an Art Nouveau silver collar and a brass ferrule. High-end quality. H. 1 1/2" x 1 1/2", O.L. 37"
\$200-\$300





126.

127.

125. Art Nouveau Ivory Cane

Ca. 1900-L-shaped ivory handle with a woman's face framed by its curvaceous hair, ebony shaft with a belt and buckle ivory joining collar and an ivory ferrule. This fully developed Art Nouveau cane stands apart with its apparent thinly veiled symbolism and sensuality. It was obviously well cared for and aged with a glorious surface to the ivory. H. 6 1/4" x 4", O.L. 34 1/4"
\$800-\$1,200

126. Warthog Ivory Figural Cane

Ca. 1900-Large warthog tooth carved with a large aquatic reptile which could be a crocodile or a varan, ebony shaft with a bound leather collar and a stag horn ferrule. The animal has an impressive head with two inset glass eyes, powerful jaws and a body with thick and scaly skin and mighty claws. H. 5 1/4" x 2 3/4", O.L. 37 1/2"
\$700-\$900



125.

128.

127. Ivory Figural Cane

Ca. 1880-Ivory knob carved to depict the head of a young girl with chubby face and long hair wearing a riding cap, plain turned metal collar, mahogany shaft and a stag horn ferrule. Delightful child portraiture and emphasized by a century old patina. H. 2" x 1 1/4", O.L. 39 3/4"
\$600-\$900



128. Dog Day Cane

Ca. 1940-Naturalistically modeled substantial whippet head handle with large glass eyes fashioned in a dark wood-like composite material and signed "SCR" under the muzzle, rosewood shaft with brass mounts and matching ferrule. So-far, so-good, however, what makes this cane very desirable, is that it breaks in nearly two equal long parts. H. 4 1/2" x 3", O.L. 36 1/2"
\$200-\$300

129. Ivory Nude Cane

Circa 1890-Seated nude study carved of a single piece of fine grained ivory, wild cherry branch shaft of a beautiful and rich natural color and a metal ferrule. The bashful girl was obviously granted the attention and skill that an artist gives to a selected creation and is imbued with great sensitivity.

H. 3 ¾" x 2 ¼", O.L. 34"
\$1,000-\$1,500



130.

131.

130. Classic Hard Stone Dress Cane

Early 1900s-Straight and tapering rock crystal handle with a fascinating natural structure, Art Nouveau white metal collar, ebony shaft with brownish hues and a horn ferrule. Canes with hard stone knobs and handles were costly to produce and the favorites of the refined and wealthy.

H. 2 ¾" x 1", O.L. 39"
\$400-\$500

131. Silver and Stag Horn Country Side Cane

Ca. 1890-L-shaped handle consisting of an angular silver part fitted with the tip of an antler to prolong the hand rest. The silver part is hand chased and engraved to resemble an oak stem and embellished with applied oak leaves and acorns while the perfectly matching antler tip was left with its naturally rugged surface. The handle is struck with three obscured hallmarks whose outlines betrays a Viennese origin and comes on a well-dressed and knobby black thorn branch freed from its bark and heeled with a 2 ½" tall white metal ferrule.

H. 5" x 3", O.L. 35 ½"
\$200-\$300



129.

132.



132. Ivory Satirical Monkey-Jockey Cane

Ca. 1880-Sizeable ivory knob carved to depict a monkey's head with stretched, pinned ears and rosewood riding cap. The head comes on a longer and tapering bone plinth and a well-dressed, knobby blackthorn branch freed from its bark and fitted with a metal ferrule.

H. 3 ¼" x 2", O.L. 41 ¾"
\$700-\$900



134.

135.



133. Decorative Day Cane

Ca. 1900-L-shaped dark horn handle with a short neck and a slightly curving hand rest ending with a flush set ivory washer, well chased white metal collar on a pepper bamboo shaft entirely engraved in a Japonized taste with, what seems to be, a net with various blooms and insects and heeled with a metal ferrule. H. 4 ¼" x 1 ¼", O.L. 32 ¼"
\$300-\$500

134. Ivory Dandy Cane

Ca. 1880 -Long and tapering ivory handle fashioned of blameless, fine grained material and carved with 16 repeating and graduated flower panels against one another. The excessively precise and high relief panels are matte and framed by clearly delineated glossy bordures. Slender ebony shaft and an ivory ferrule.
 H. 9 ½" x 1", O.L. 38 ½"
\$800-\$1,000

135. Ebony and Ivory Figural Cane

Ca. 1900-Ivory crook handle ending in an ebony bird's head with inset ivory beak and glass eyes, gilt metal collar with a "J.H" hallmark, ebony shaft with ivory eyelets and a horn ferrule. The clever use of ebony and ivory, the traditional beaux arts materials, is achieved here seamless, and in a well-balanced, striking and streamlined shape. H. 3 ½" x 2 ¼", O.L. 36"
\$400-\$600

133.



136. Meissen Porcelain Cane

19th Century-Straight white porcelain handle decorated in cobalt blue with the classic, "Zwiebelmuster" Onion Pattern, ebony shaft with a gilt collar and a brass ferrule. This German handle is authenticated with the two crossed swords of the famous porcelain manufacture. H 3" x ½", O.L. 36 ¾"
\$500-\$600

136.

137. Ivory Noble Man's Cane

Ca. 1870-Long ivory handle fashioned in an angular, straight and tapering configuration and engraved with greatest care in the prevalent architectural taste of the period. Two integral, intricate and feathery initials carved in high relief add the differentiating touch of glamour of personalized objects while the well figured and long snake wood shaft. French, Dieppe origin for this cane. H. 6 3/4" x 1", O.L. 41 1/2"
\$500-\$700

137.



139.



138. Hard Stone Dress Cane

Ca. 1900-Gold stone ball knob of an opaque brown-red color with stunning suspended and glittering, rosewood shaft with a metal collar embossed with a braided pattern and a horn ferrule. H. 1 1/2" Diameter, O.L. 36 1/4"
\$300-\$400

139. Ivory Medieval Style Cane

Ca. 1900-Ivory knob carved to depict an armored knight on his armored horse, ebony shaft and a metal ferrule. The micro carved medieval warrior shows fine detail and is presented on a hexagonal ivory base. H. 2 1/4" x 1 1/2", O.L. 36"
\$500-\$700

140.



140. Ivory Greyhound Cane

1870-A nicely carved ivory greyhound head with longer snout, folded ears and inset glass eyes, malacca shaft and a wide silver collar chased with a Gothic pattern and engraved "Mr. S. Ash/Sth Norwood/1870". Long years of use and the right portion of wear to the handle with a smooth surface and warm patina combination makes it agreeable for the palm of the hand and, contrary to the ordinary, adds to its personality. Minor chip to the dog's nose and intense patina to the shaft. H. 3 3/4" x 1 1/2", O.L. 31 3/4"
\$400-\$500

138.



141.



141. Ivory Elephant Cane

Ca. 1900-Substantial ivory crook handle with an elephant head, finely chased white metal collar, deep black and closed pored ebony shaft and a brass ferrule. The very fine carving is done in low relief with the comfort of the cane's wearer in mind and its rendering is emphasized by natural and very decorative character lines to the ivory. H. 5" x 3 3/4", O.L. 36 1/2"
\$800-\$1,200

142.



142. Silver Day Cane

Dated 1918-Large Opera shaped silver handle with a hammered surface, sturdy ebony shaft and a horn ferrule. It distinguishes with superb proportions as well as luxurious simplicity and is personalized on the front cap with the engraved "AJ" initials of its first owner and on the rear one with a presentation inscription "19.11.1918 d. städt. Beamten" which translates "19.11.1918 German Municipal Civil Servants". Furthermore, the handle is authenticated by a full set of German hallmarks with the Half Moon and Crown as well as an "800". H. 4 1/2" x 2 1/2", O.L. 36 1/2"
\$300-\$400

144.

143. Ivory Figural Meiji Cane

Ca. 1890-L-shaped ivory handle carved to depict a sleeping young boy, well figured and richly colored Cocobolo shaft with a turned ivory collar and a stag horn ferrule. The carving is fine and detailed to such point that one can see the closed eyes and relaxed facial traits on the face of the boy and the textile pattern of his gown. H. 3" x 1 3/4", O.L. 36 1/4"
\$600-\$800

144. Ivory and Gold Horse Head Cane

Ca. 1910-An ivory horse head with two inset large and dark glass eyes and a 14 karat bridal, rosewood shaft and a stag horn ferrule. H. 4" x 1 1/2", O.L. 36 1/4"
\$600-\$800

143.



145. Ivory French Bulldog Cane

Ca. 1890-Opera shaped handle carved with a prone French Bulldog. The canine shows all the characteristics of the breed and has cut ears and tail. A slightly cartooned approach to the carving as well as two dark red eyes inset wide apart lend it charm and vivacity. The handle aged well with a smooth surface and uniform, natural patina and comes on a dark rosewood shaft with a plain silver collar and a horn ferrule. Possibly French. H. 4 3/4" x 1 1/2", O.L. 38 1/4" **\$600-\$800**



145.

146. Anglo-Indian Ivory Cane

Ca. 1890-Giant Ivory handle carved in filigree and undercuts technique with what seems to be two deities above one another and a dragon face, substantial silver collar, malacca shaft and a metal ferrule. This cane has the allure of a staff and is an elaborate cross- cultural creation that mixes Indian arts with British lifestyle. H. 7 1/2" x 1 3/4", O.L. 40" **\$600-\$800**



146.

147. Early Nobleman's Cane

Ca. 1800-Longer horn handle plain turned in a classic knob shape with a stretching, cylindrical stem and embellished with a flush set round bone shield at the top. Malacca shaft with a silver collar and silver swiveling bar anchored on two matching shields and a metal ferrule. H. 4" x 1 1/4", O.L. 33 1/4" **\$400-\$500**



147.

148. Buttock Erotic Cane

Ca. 1890-L-shaped erotic ivory handle with the backside of a woman deeply carved on its vertical stem, malacca shaft a slender turned ivory collar and a long stag horn ferrule. A one-of-a-kind erotic which has that touch of eccentricity that never goes amiss and praised by striking character lines to the ivory handle. H. 3 1/2" x 2 1/2", O.L. 36 3/4" **\$500-\$700**



148.

149.



149. Carved Lion Cane

19th Century-A substantial boxwood handle carved in a heraldic style, coco palm tree wood shaft and a horn ferrule. H. 5 1/4" x 2 1/4", O.L. 37 3/4"

\$200-\$300

150.



150. Ivory and Mother of Pearl Cane

Ca. 1900-Straight ivory handle fashioned in a flattened shape with faux sprig and applied with a cavorting Cupid among engraved floral. Ebony shaft with a metal collar and an ivory ferrule. Delicate and decorative feminine of a most likely French origin. H. 4" x 3/4", O.L. 38 3/4"

\$300-\$400

153.



151. Hard Stone Dress Cane

Ca. 1900-A sizeable tiger eye ball knob with its beautifully reeded silver collar struck with an "800" hallmark on a tight pored ebony shaft heeled with a horn ferrule. Luxurious and trendy, this cane draws its elegance from a clear design and striking layered structure showing a middle part with the characterizing fibrous, shimmering golden chatoyance flanked by two darker sides one of them with a most unusual, dot structure. H. 2" Diameter, O.L. 38 1/2"

\$300-\$400

152.



152. Silver Mascot Dress Cane

Ca. 1890-Substantial L-shaped silver handle with a slightly arched and pointed hand rest well chased and engraved with an owl on the front a tree trunk extending towards the back, ebony shaft and a brass ferrule. The typical Viennese profile of the handle is validated with three clear Austro-Hungarian hallmarks on its integral, plain and long collar. H. 3 3/4" x 3 1/4", O.L. 33"

\$300-\$400

151.



153. Ivory Walnut Cane

Ca. 1890-The knob is a carved study of a walnut and shows the edible deeply ridged and wrinkled two lobbed seed in a cracked hard shell, makassar ebony shaft with metal collar and horn ferrule. Perfect in form and function, this cane is a hymn to the art of ivory carving and aged well with rich patina. 2" x 1 3/4", O.L. 36"

\$400-\$500

154. Asian Ivory Cane

Ca. 1900-Very tall and tapering diamond shaped ivory handle carved with a flower panel, ebony shaft with a "Nickel Silver" collar and a stag horn ferrule. The intricate carving is unimaginably deep and done in a breath taking micro detail.

H. 9 1/2" x 1 1/2", O.L. 38 1/4"
\$600-\$800

154.



156.

155. Ivory Dog Heads Cane

Ca. 1900-L-Shaped ivory handle with rounded edges carved with a different dog head on each side, plain silver collar personalized with the name of the first cane owner "Dr. C.E.HAM" and struck with obscured London hallmarks, ebony shaft and a metal ferrule.

H. 4 1/2" x 1 1/2", O.L. 36 1/2"
\$400-\$500



155.

156. Hard Stone Dress Cane

Ca. 1910-Sizeable grey agate ball knob on a dark rosewood shaft with a metal collar and a horn ferrule. This cane draws its elegance from a clear design, natural and beautiful dark grey color of the knob as well as its well-polished and addicting, smooth surface. Luckily.

H. 2" Diameter, O.L. 37 3/4"
\$400-\$600

157. Ivory Dress Cane

Ca. 1880-Long ivory handle fashioned in an octagonal, straight and slightly tapering configuration and carved in very high relief with the initials "SL", ebony shaft and a stag horn ferrule.

H. 7 3/4" x 3/4", O.L. 37 1/4"
\$500-\$600



157.

158. Ivory Horse Head Cane

Ca. 1890-Opera shaped ivory handle carved with a horse head, wider and plain silver collar with a well streaked rosewood shaft and a stag horn ferrule. The head is beautifully integrated in the handle, shows finely detailed features and executed with rounded edges to maximize the comfort for the hand of the cane's wearer.

H. 4 1/4" x 1 1/2", O.L. 36 3/4"
\$600-\$700

158.



159.



159. Ivory Art Nouveau Dress Cane

Ca. 1900-Longer ivory handle of a vertical and tapering profile carved with three stretching and repeating flowing foliate, ebony shaft and an ivory ferrule. This cane distills the essence of the ornamental vocabulary of the turn of the century and is a pure gem of Art Nouveau artistry. H. 5" x 3/4", O.L. 36" **\$700-\$900**

160.



160. Stag Folk Art Handle

Ca. 1920-Giant reindeer antler portrait handle with an angry expression on a striking face caused by the scorpion on the exaggerated long nose. Singular Alpine carving with possibly anti-Semitic background which deserves further academic research. -For similar handles and related literature refer to the exhibition "Stereotypes confronted head-on" in the Spertus Institute for Jewish Studies Chicago October, 2008. The exhibition featured the provocative collection from the Jewish Museums of Berlin and Vienna. H. 10" x 14 1/2" **\$500-\$700**



163.

161. Ivory Hound Dress Cane

Ca. 1900-Carved ivory dog in good condition with average striations, brass beaded collar, unusual paint decorated hardwood shaft and a horn ferrule. H. 3 1/2" x 1 1/4", O.L. 35" **\$300-\$450**



162. Ivory Whippet Cane

Ca. 1900-A large carved head with two colored glass eyes, ornate gold collar, nice honey malacca shaft and a two inch horn ferrule. H. 4 1/2" x 1 3/4" O.L. 33 1/2" **\$450-\$600**

162.

161.



163. Ivory "1000" Face Cane

Ca. 1890-A wonderful Asian carving with high relief faces which have inlaid horn eyes, visible Asian character cartouche, ornate signed sterling fluted collar, stepped bamboo shaft and a metal ferrule. H. 4 1/4" x 1 1/4" O.L. 34 3/4" **\$650-\$750**

164. Walrus Ivory Dog Cane

Ca. 1900-Carved ivory dog with red faceted eyes in walrus ivory, silver metal collar, exotic wood shaft and a horn ferrule. H. 3 ¼" x ¾" O.L. 35 ¾"

\$350-\$450

165. Ivory Bulldog Cane

Ca. 1900-A carved ivory bulldog with two colored glass eyes, inked whiskers, ornate hallmarked British coin silver collar, thick mallaca shaft and a black horn ferrule. H. 2 ¼" x 1 ¼" O.L. 36"

\$450-\$650

166. Japanese Ivory Dress Cane

Ca. 1890-An elephant ivory carving of three mice with inset black horn eyes, various berries and fruits, signed sterling crown collar, exotic wood shaft and a metal ferrule. H. 1 ¼" x 4" O.L. 36"

\$700-\$1,000

167. Nautical Fist and Egg Dress Cane

Ca. 1885-A unique carved ivory handle of a hand holding an egg, fine detailed piece of work, alternating ivory and horn spacers, thick ebony shaft and a three inch horn ferrule. H. 1 ¾" x 4" O.L. 34 ¼"

\$1,000-\$1,500





168.



169.

168. Ivory Soldier Dress Cane

Ca. 1880-A finely carved ivory handle of a soldier with helmet and plume, ornate early brass collar, mallaca shaft and a stag ferrule. H. 2" x 4 3/4" O.L. 35 1/4" **\$400-\$500**

169. Ivory Spaniel Dog Cane

Ca. 1880-A large carved ivory handle of a reclining Spaniel done in high relief, ornate British hallmarked silver collar, nice hardwood shaft and a metal ferrule. H. 4" x 1/4" O.L. 36" **\$500-\$600**

172.

170. Ivory Lizard Dress Cane

Ca. 1900-A carved pig ivory handle with a lizard which has tiny black eyes, unusual silver wound snake collar, hardwood natural vine shaft and a metal ferrule. H. 6 x 2 1/2" O.L. 35" **\$300-\$500**

171. Ivory Elephant Cane

Ca. 1890-A carved elephant ivory two piece handle with a high relief protruding bull elephant with one glass eye, silver metal collar, hardwood shaft and a metal ferrule, H. 3 3/4" x 4" O.L. 35 3/4" **\$500-\$700**

172. Enamel Silver Dress Cane

Ca. 1920-A perfect engine turned blue enamel sterling handle with great eye appeal, handle is signed 925-fine, rich snakewood shaft and a horn ferrule. H. 1 1/4" x 2" O.L. 34 1/4" **\$800-\$1200**



171.

170.



173. Civil War Gold Dress Cane

Ca. 1861-The tested 14k gold cane of col. RA Young who was in command of the sixteenth regiment of militia at Charleston, SC.,the handle is engraved atop "Col. R.A. Young, Charleston SC,," American oak shaft and 3 1/2" metal ferrule.

H. 7/8" x 1" O.L. 36 1/2"

\$600-\$800

174. Ivory Physicians Snake Cane

Ca. 1890-A carved elephant ivory handle with a large snake carved in high relief, ornate gold filled collar, faux bamboo partridge wood shaft and a 2 1/2" horn ferrule. H. 1 3/4" x 5" O.L. 37"

\$500-\$700

175. Ivory Political Dress Cane

Ca. 1880-A nicely carved handle of what appears to be Henry Clay or early Abraham Lincoln, ornate collar signed silver, exotic hardwood shaft and a horn ferrule. H. 2" x 3" O.L. 36"

\$800-\$1000

176. Ivory German Dress Cane

Ca. 1880-A carved ivory handle with high relief coat of arms much like the canes that were used by students at colleges in Germany, ornate silver metal collar, malacca shaft and a horn ferrule. H. 2 1/4" x 10" O.L. 38 3/4"

\$800-\$1000

177. Ivory Hunting Cane

Ca. 1885-A carved one piece ivory handle with high relief representations of hunting accouterments and dogs, fancy gold filled collar, exotic wood shaft and horn ferrule.

H. 4" x 5 1/4" O.L. 38 1/4"

\$400-\$500





181.



180.



182.



179.



178. Ivory Cat and Mouse Cane

Ca. 1900-A carved ivory cat atop what appears to be a tree trunk which is about to jump upon a large rat, gold filled lower handle engraved "Mrs. Captain. G." exotic wood shaft, brass ferrule.
H. 1 1/8" x 2 1/2" O.L. 34 1/4"
\$600-\$800

179. Ivory and Gold Dress Cane

Ca. 1890-A unique inlaid ivory and gold handle, brass collar which has been polished, snakewood shaft and a horn ferrule. H. 1 1/4" x 2" O.L. 35 1/4"
\$350-\$500

180. Ivory Tiger Cane

Ca. 1880-A carved ivory tiger with two colored glass eyes, probably walrus ivory, early silver metal collar, well worn original shaft and no ferrule. H. 3" x 3 1/2" O.L. 34"
\$250-\$300

181. Ivory Snake Cane

Ca. 1890-A large elephant ivory handle with a ferocious snake with a glass eye, ornate gold filled collar, exotic wood shaft and a 2 1/2" metal ferrule. H. 4 1/4" x 1 3/4" O.L. 36 1/4"
\$900-\$1200

182. Ivory Puma Dress Cane

178.

Ca. 1890-A massive carved ivory handle with a puma perched upon a tree trunk, nice high relief carving, large signed sterling collar, one inch thick malacca shaft and an ivory ferrule H. 2 1/4" x 5 1/2" O.L. 36"
\$1,200-\$1,500

183. Ivory Dog Dress Cane

Ca. 1900-A high relief carving of a pair of dogs playing on a log, signed ivory handle but unreadable, fluted signed sterling collar, thick mallaca shaft and brass ferrule. H. 5" x 1 3/4" O.L. 36 1/4" \$1,100-\$1,300



183.

184. Ivory Opera Cane

Early 20th Century, a formal ivory dress cane with initials atop, small ivory spacer collar, ebonized shaft and a stag ferrule. H. 1 1/4" x 1 3/4" O.L. 35 1/4" \$250-\$350



185.

185. Cat Wedding Cane

Ca. Pre ban-A high relief ivory carving of the cat bride on one side and the cat groom on the other, both with their wedding parties, signed sterling collar, honey malacca shaft, and a metal ferrule. H. 5 x 1 1/2" O.L. 37" \$1,000-\$1,300

186. Ivory Lion Cane

Ca. Pre ban-Ivory lion with two colored glass eyes with a full figure carved also into the handle of the cane, fluted sterling collar, exotic wood shaft and a metal ferrule. H. 4 1/4" x 1 3/4" O.L. 36 1/2" \$600-\$700

186.



184.





188.

187. Ivory Blackamoor Cane

Pre ban-A carved ebony and ivory handle which is carved in high relief, ivory shirt collar, thick ebony shaft and a 3 inch stag horn ferrule.

H. 2 1/2" x 3 1/2" O.L. 36"
\$1,100-\$1,300



188. Ivory Corkscrew and Sword Rabbit Cane

Ca. 1900-A carved ivory rabbit with two colored glass eyes, handle unscrews to expose a 3 inch corkscrew, silver collar, 5 inches below the collar the shaft unscrews to produce an 11" sword blade, ebony shaft and ivory ferrule.

H. 4 3/4" x 1 1/2" O.L. 36"
\$1,200-\$1,500

189.

187.



189. Ivory Frog Cane

Ca. Pre ban-A carved ivory frog which two colored bulbous glass eyes, ornate hallmarked collar, exotic hardwood shaft and an ivory ferrule.

H. 1 3/4" x 2 1/4" O.L. 36"
\$600-\$800



190. Ivory Judges Gavel

Pre ban-A nice heavy ivory gavel; and a turned exotic wood handle.

H. 3 1/4" x 1 3/4" O.L. 10 1/4"
\$200-\$250

191.



191. Asian Ivory Stamp

Ca. 1890-A carved "1,000" face ivory stamp with a three character signature, brass seal with 3-4 characters. H. 1 1/4" x 1 1/4"

\$250-\$350

190.



192. Ivory Dress Cane

Ca. 1910-A large elephant ivory crook handle, ornate rose gold British hallmark collar, honey mallaca shaft and a 3" metal ferrule. H. 4 3/4" x 3 1/2" O.L. 36 1/4" \$500-\$700

193. Large Horn Crook Cane

Ca. 1870-A twisted and carved horn handle, large ornate silver metal collar, exotic wood shaft and a metal ferrule. H. 5 3/4" x 3 1/2" O.L. 37" \$600-\$750

194. Tiffany Silver Dress Cane

Early 20th century-An engraved sterling Tiffany handle with the markings "Tiffany & Co. 19429A makers 9096 sterling 925-1000n" exotic wood shaft and a metal ferrule. H. 1 3/4" x 1 1/4" O.L. 36 1/4" \$650-\$900

195. Gold Filled Dress Cane

Ca 1840- An early and ornate gold filled handle with three different medallions, ebony shaft, with gold filled lanyard holes, thick malacca shaft and a 2" brass ferrule. H. 1" x 2 1/2" O.L. 34 1/4" \$450-\$600



193.

192.



196.

196. Stag Bulldogs Cane

Early 20th century- A carved red deer antler with a pair of bulldogs that have two color glass eyes, unmarked silver collar, exotic wood shaft and a 2 1/2" brass ferrule. H. 5" x 2 1/4" O.L. 34 1/4" \$450-\$600

194.

195.





199.

197. Parquetry Dress Cane

Ca. 1920- An inlaid one piece shaft with checkerboard atop and various attached and laminated woods throughout the shaft, and a brass ferrule. O.L. 36"
\$150-\$200

198. Gold Filled Gauntlet Dress Cane

Ca. 1880- A perfect example of this genre of dress canes, perfect finish, ebony shaft and a brass ferrule. H. 1" x 3 1/2" O.L. 36 3/4"
\$600-\$700

199. Gold Quartz Dress Cane

Dated 1883-An extremely nice gold handle with a gold quartz medallion atop, presentation is "Presented to Charles A. Harrison, in grateful remembrance of his heroism in saving our Sadie and Clara from drowning in L.I. Sound off Branford, Conn., August 11, 1883," exotic wood shaft and a metal ferrule. H. 1 3/8" x 2 1/4" O.L. 36 3/4"
\$8,000-\$12,000



198.



197.

200. Alligator and Indian Dress Cane

Early 20th century-A nice Florida carving of an Indian in full dress prying an alligator's mouth open with a stick, great detail is paid to the warriors feathers and the alligator's ribbed back, ornate silver metal collar, thick malacca shaft and a metal ferrule. H. 6" x 2 1/2" O.L 36 1/2" **\$2,500-\$3,000**

200.



201. Silver Dress Cane

Ca. 1820-A "Carlton Club" type of decoration, high relief silver with cherubs-plants-etc, single step malacca shaft, a 5 inch brass ferrule. H. 1 1/2" x 2 3/4" O.L. 36 3/4" **\$500-\$700**

202. Gold Dress Cane

Ca. 1890-An ornate gold filled dress cane with nice repose, ebony shaft, metal ferrule. H. 1 5/8" x 2 1/4" O.L. 37 1/4" **\$400-\$500**

201.

203. Stag Snake Cane

Ca. 20th century-An expert carving of a snake entwined on a deer antler, signed sterling collar, beautiful snakewood shaft and a 3" stage ferrule. H. 4 1/4" x 3" O.L. 36" **\$700-\$900**

202.



206.



204. Lapis Dress Cane

Ca. 20th century-A large lapis ball with beautiful deep blue colors, an unusual flowing signed sterling collar which partially wraps the handle, exotic hardwood shaft and a brass ferrule. H. 2" x 2" O.L. 36"
\$350-\$550

205. Black Forrest Bear Cane

Ca. 1900-An unusual one piece carving from the German Black Forrest of a pair of bears of which one is coming out of hibernation, natural twigspur decoration throughout the shaft and a metal ferrule. O.L. 37 1/2"
\$500-\$600

206. Silver Alligator Dress Cane

20th century-A signed sterling handle with two colored glass eyes which has been cast in the style of Tiffany, beautiful snakewood shaft and a brass ferrule. H. 4 x 2 3/4 " O.L. 36 1/4"
\$700-\$1,000

207. Nautical Life Silver Dress Cane

20th century-A cast, signed sterling handle with various sea creatures such as tortoise, dolphins, and other fish, fluted sterling collar, thick malacca shaft and a brass ferrule. H. 2 1/2 "x 4 1/2 " O.L. 36"
\$450-\$550

208. Reilly Air Gun

19th Century-An E.M. Reilly & Co. English boxed air gun complete in its original mahogany box, original working pump, horn handle, original ramrod ferrule and key, perfect for the gun enthusiast. Very fine condition. H. 3 1/2" x 1 1/2" O.L. 38"
\$2,000-\$3,000

205.



204.



207.



208.



209. Nautical Whale Bone Cane

Ca. 1860-An unusual whale bone cane with a horn handle which has a piece of abalone atop, handle is attached to shaft by two abalone dots, 1 3/4" squared shaft atop which about 1/3 down turns into a cylinder and a brass ferrule.
H. 1 5/8" x 2 1/4" O.L. 35 1/4"
\$800-\$1,200



209.

210. Nautical Dress Cane

Ca. 1870-A carved whales tooth handle with a baleen disk atop, 1/3 hexagonal exotic wood shaft which rounds out to a cylinder, metal ferrule with stopper.
H. 1 1/2" x 2 3/8" O.L. 33 1/2"
\$450-\$600



212.

211. Pair of Wooden Canes

Early 20th century-Two carved wooden canes O.L. 36"
\$75-\$150

210.

212. Ladies Silver Compact Cane

Ca. 1920-A hinged signed sterling handle which opens to expose a small powder puff for makeup finishing, small leather lanyard, one eyelet, exotic wood shaft and a horn ferrule.
H. 1" x 1 1/2" O.L. 37 1/2"
\$350-\$450

213.



211.

213. Agate Dress Cane

Ca. 1925-A round agate with natural hues, unsigned silver collar, bamboo shaft and a metal ferrule.
H. 1 5/8" x 1 5/8" O.L. 35 1/2"
\$250-\$350



214.



214. Vertebrae Dress Cane

Ca. 1920-A buffalo horn handle, horn and vertebrae spacers which are held together by a metal shaft, a couple of the discs have minor breaks and a metal horn ferrule. H. 1" x 1" O.L. 35" **\$250-\$350**

217.



215. Porcelain Opera Cane-

Ca. 1920- A painted porcelain ball with a courting couple on top, gold metal collar, ebony shaft and a metal ferrule. H. 1" x 1" O.L. 34 1/4" **\$200-\$300**

215.



216. Agate Dress Cane

Ca. 1925-A round agate ball with many earth tones, ornate silver metal collar, ebony shaft and a horn ferrule. H. 1 3/4" x 1 3/4" O.L. 36" **\$250-\$300**

217. Horn Bird Dress Cane

Ca. 1900-A carved topaz colored horn with two colored glass eyes of an unusual bird, collar is signed sterling, strange and exotic wood shaft and a metal ferrule. H. 5 1/2" x 2" O.L. 34 1/4" **\$300-\$400**

218. Victorian Wolf/Gold Dress Cane

Ca. 1875- An ornate gold filled handle with a hand painted porcelain upper shaft of a young girl sitting in a field with a large wolf, gold metal collar, ebony shaft and a horn ferrule. H. 1 3/4" x 4" O.L. "36" **\$600-\$800**

216.



218.



219. Ivory Lion Head Cane

Ca. 1890- Substantial ivory lion handle with superb curly mane, hand chased and engraved silver collar struck with London hallmarks, malacca shaft and a metal ferrule, despite serious expertly chippings, one missing incisor it still boasts a lot of character

H. 3" x 2 1/2" O.L. 35 3/4

\$1,000-\$1,500

219.



221.



220. Fifteen Cane Handles

Ca. 1900-Old-New-Stock. Nine stag horn and six buffalo horn handles of various shapes and sizes. All have been used and show the right amount of wear and patina to increase their desirability and not diminish their value. From 4 1/2" to 8 3/4"

\$400-\$600

221. Six Hardwood Shafts

Ca. 1900-Old-New-Stock. Various ebony, rosewood and cocobolo shafts. First rate and ready to go shafts and only in need of a surface finish. Ideal for restorations and repairs. Top diameters. 1/2" to 3/4", O.L. ca. 35"

\$400-\$600

222. Six Hardwood Shafts

Ca. 1900-Old-New-Stock. Various ebony, rosewood and cocobolo shafts. First rate and ready to go shafts and only in need of a surface finish. Ideal for restorations and repairs. Top diameters. 1/2" to 3/4", O.L. ca. 35"

\$400-\$600

222.



223. Six Hardwood Shafts

Ca. 1900-Old-New-Stock. Various ebony, rosewood and cocobolo shafts. First rate and ready to go shafts and only in need of a surface finish. Ideal for restorations and repairs. Top diameters. 1/2" to 3/4", O.L. ca. 35"

\$400-\$600

223.

220.





224.

224. Oak Cane Case

A nice smaller oak cane case with a lift front, Original condition.
\$1,000-\$1,500

225. Ivory Egyptian Cane

Ca. 1910-A carved ivory Egyptian style revival crutch handle, ivory collar, malacca shaft and a horn ferrule. H. 4 1/2" x 3" O.L. 34 1/2"
\$400-\$600

226. Brigg Silver Dog Cane

Ca. 1925-A heavy cast silver dog which doubles as a defensive weapon, signed Brigg sterling hallmarked silver collar, ebonized shaft and a stopper ferrule. H. 2" x 2 1/2" O.L. 36"
\$350-\$450

227. Jewish Character Cane

Ca. early 20th century-A carved stag handle with two colored glass eyes, these style canes were carved in Germany, full bark twigspur shaft, and a stag and horn ferrule. H. 6 1/2" x 5" O.L. 38"
\$450-\$650

228. Man of the Mountain Silver Dress Cane

Ca. 1900- A high relief casting of six different faces of an old man with a wooly beard, small sterling collar, ebony shaft and a brass ferrule.
 H. 1 1/2" x 1 3/4" O.L. 35"
\$300-\$500



226.



228.



225.

227.

229. Ivory Dress Cane

Ca. 1875-A high relief carved handle with belt buckle collar, probably also used as a riding crop but cane length, malacca shaft and 4" ivory ferrule.

H. 5 1/2" x 3/4" O.L. 36"

\$350-\$450



230. Gun Cane

Ca. 1885-A smoothbore 9 mm gun cane in working condition, plunger ferrule, very nice condition with one round of ammo.

H. 5" x 3" O.L. 33 1/2"

\$1,000-\$1,500



230.

231. Porcelain Dress Cane

Ca. 1880-An upscale porcelain tau handle with much gold work probably French, exotic wood shaft and a metal ferrule.

H. 3 1/2" x 2" O.L. 36"

\$350-\$500



229.

232. Ivory Lion Cane

Ca. 1875-A carved elephant ivory line handle with two colored glass eyes, ornate gold filled collar, original malacca shaft and a horn ferrule.

H. 4" x 2" O.L. 35 1/2"

\$500-\$800



232.

233. Petite Ivory Bulldog

Ca. 1880-Small ivory bulldog opera cane with two colored glass eyes, ribbed silver metal collar, snakewood shaft and a metal ferrule.

H. 3/4" x 3/4" O.L. 36"

\$300-\$400



233.



231.



234.

234. Hound Dog Horn Cane

Ca. 1920-A whimsical carving of a large hound with two color glass eyes, wrapped leather collar, faux bamboo shaft and a 3" horn ferrule.

H. 5" x 5 1/2" O.L. 35"

\$500-\$700

235. Defensive Gold Dress Cane

Ca. 1870-A rose gold weighted for defensive purposes ornate handle, exotic wood shaft and 2" brass ferrule.

H. 1 1/4" x 2" O.L. 35 1/2"

\$250-\$400

236. Jungfrau Hiking Stick

Ca. 1910-A typical hiking stick of this type with a goat horn handle, goat leg and hoof collar, maple shaft and pike ferrule.

H. 6 1/2" x 3 1/2" O.L. 39"

\$250-\$350

237. Asian Mask Cane

Ca. 1925-A split bamboo one piece cane with approximately forty faces carved into the shaft, signed with eight Asian characters and a horn bug eaten ferrule.

O.L. 35"

\$150-\$250



236.



237.



235.

238.

238. A Dog Cane Stand

Ca. 20th century- A cast resin Victorian style cane stand with glass eyes.

D. 30" x 33" x 17"

\$3,000-\$3,500



239.

239. Oak Cane Case

Ca. 1900- A fine example in near mint condition, with 78 stick and ball dividers, and a stepped 5 tier base, nice set of rollers and brass hinges, appears to have all original glass and original finish, front lift top and locking glass.

H. 52" W. 36" D. 18 1/2"

\$1,200-\$1,800

Please see the internet catalogue for more canes that will be sold after we finish the published catalogue.



Kimball M. Sterling, Inc. (TFL-1915)
125 West Market Street
Johnson City, Tennessee 37604
kimballsterling @ earthlink.net
423.928.1471

Photography by James Price
Catalog Design by KT Design, LLC
www.ktdesignllc.com

© Copyright 2015 Kimball M. Sterling, Inc.

www.AuctionAuction.com