

KIMBALL AND VICTORIA STERLING PRESENT

TWO MANSIONS CANE COLLECTION

ABSOLUTE AUCTION- LIFETIME COLLECTION

SATURDAY, SEPTEMBER 20TH
11:00 AM EST



TERMS & CONDITIONS

1. Cash or check. A 20% buyers' premium will be added to the hammer price as part of the sale price for all bidders. Internet bidders will pay 23%. We reserved the right to hold purchases until the buyers checks clears if buyer is not known by us. Bank letter of credit is acceptable.

2. Mail or phone bids are accepted; the firm may require a deposit.

3. Kimball M. Sterling, Inc. has endeavored to catalog and describe the property correctly. All property is sold as is and neither the auction company nor the consignor will be responsible for descriptions, genuineness, provenance or condition of the property. No statement in the catalog made orally at the sale or otherwise shall be deemed to be a warranty, representation, or an assumption of liability.

4. In the event of any dispute between bidders, the auctioneer shall have total discretion to determine the successful bidder, in which his determination shall be final or to re-offer and resale the article in dispute. Title of the item or items purchased by the bidder will pass at the fall of the gavel and declaration of bidder. This is not an approval auction. All measurements are approximate.

5. Principal auctioneer: Kimball M. Sterling #2467. B. Elizabeth Sterling, auctioneer # 5757. Firm Kimball M Sterling Inc. TFL-1915

6. Bidders may bid live on the Internet by visiting <http://www.auctionauction.com>. You may also view the auction at this site and bid by phone.

7. Communications:
Telephone 423-928-1471.
Fax 423-928-2816.
Cellular 423-773-4073, 423-773-4072.
Email kimballsterling@earthlink.net

8. We do not ship protected items overseas but anything else will be shipped by the UPS Store in Johnson City. We can however hold your item till you or a friend visit's the USA and you can take your items as a personal item or we can ship to a friend in the USA.

9. Kimball M. Sterling, Inc. will not be held responsible for bids received on the day of the auction, unexecuted absentee bids, phone bidders not contacted or slow Internet bids. Although we do attempt to get all bids executed problems do occur. There will be no recourse from the bidder. We will not be responsible for items left on our location for over 30 days.

10. Sale will be conducted at 125 West Market Street, Johnson City, Tennessee. 37604. Announcements day of the sale take precedence over pre-sale advertising. Any litigation that pertains to this auction will be conducted in the county of Washington in Tennessee and is agreed upon by registering for this auction.

11. Airport is the Tri-Cities Airport, which is approximately 20 miles from the gallery. Internet catalog and live bidding available at www.auctionauction.com Best Western Hotel: 423-282-2126. A very fine hotel which offers Sterling Auction a discount rate is the Carnegie Hotel 1216 W State of Franklin Rd, (423) 979-6400.

12. Please call for condition report on sale lots or email us. We do send out multiple photos by email of any lot in the auction. By registering for this auction you accept the terms.

13. Parking service is free.

Live on the internet at
LIVEAUCTIONEERS.COM
Two Time Winner of Best of Show
from the National
Auctioneers Association

Kimball M. Sterling Auction Gallery
125 West Market Street
Johnson City, Tennessee 37601
kimballsterling @ earthlink.net
423.928.1471

KIMBALL AND VICTORIA STERLING PRESENT

TWO MANSIONS CANE COLLECTION

ABSOLUTE AUCTION- LIFETIME COLLECTION

SATURDAY, SEPTEMBER 20TH
11:00 AM EST

PREVIEW

SATURDAY, SEPTEMBER 20TH AT 9:30 AM EST

FRIDAY, SEPTEMBER 19TH - 12:00-5:00 PM

WWW.AUCTIONAUCTION.COM

1. Ivory Fish Cane

Ca. 1900-A carved ivory handle which has a muskie and a bass, ornate silver collar, ebonized shaft and a horn ferrule.

H. 4 ½" x 2 ½", O.L. 36"

\$800-\$1,200

2. Stag Snake Cane

Dated 1869-A stag handle carved in the form of a tree trunk with a snake entwined, dated silver presentation collar, hardwood shaft and a metal ferrule.

H. 1 ¼" x 3", O.L. 36"

\$200-\$300

3. Ivory Courtship/ Valentine Cane

Ca. 1850-A high relief carving of a couple carving a heart into a tree, ornate clothing and foliage, carved ivory collar, exotic wood shaft and a horn ferrule.

H. 1 ½" x 4", O.L. 35"

\$1,500-\$2,000

4. Chinese Ivory Dress Cane

Ca. 1890-A carved ivory handle with four figures, two are reading, one is studying and one is worrying, open fret carving near the bottom, silver metal collar, ebonized shaft and metal ferrule.

H. 2" x 3 ¼", O.L. 35 ½"

\$1,000-\$1,500



3.



1.



2.



4.



6.

5. Japanese Ivory Turtle Cane

Ca. 1890-A large ivory handle with a nest of turtles, silver collar, thick ebony shaft and a metal ferrule.

H. 1 ½" x 5", O.L.-35 ½"
\$1,000-\$1,500



5.

6. Cinnabar Asian Cane

Early 20th Century-A large fine condition cinnabar handle, ornate gold and silver metal collar, thick bamboo shaft and a horn ferrule.

H. 7 ¼" x 3", O.L.-36 ½"
\$500-\$1,000



7.

7. Ivory Bulldog Cane

Ca. 1890-A carved ivory bulldog with two color glass eyes, flick mechanism red tongue, when shaft is flicked the red tongue extends, hardwood shaft and a horn ferrule.

H. 2" x 1 ¾", O.L.-35 ¾"
\$1,500-\$2,500

8. Art Nouveau Dress Cane

Ca. 1890-A silver over ivory handle, ornate silver collar, full bark twigspur shaft and a metal ferrule.

H. 4 ¼ x 1 ½", O.L.-35 ¼"
\$500-\$700



8.

9. Dachshunds Ivory Cane

Late 19th Century-A large carved ivory handle which is done in great detail, both front and back carved, reeded ivory collar, malacca shaft and a brass ferrule.

H. 2 ¾" x 3 ¾", O.L.-38"
\$2,500-\$3,000

10. Phrenology Ivory Cane

19th Century-A prime original example with readable numbers and divisions of the brain, silver fluted collar and a silver spacer, pair of ivory eyelets, wood shaft and a horn ferrule.

H. 1 ¼" x 3", O.L.-38 ¼"
\$3,000-\$5,000

11. Silver Courting Cane

Ca. 1870-A high relief casting of a couple meeting, marrying and cupid with his bow and arrow, exotic wood shaft, small split to the silver handle where it meets the shaft and a metal ferrule.

H. 1" x 7 ¾", O.L.-38 ¾"
\$600-\$900

12. Romantic Ivory Cane

Ca. 1865-A fully carved ivory handle with a couple embracing, sterling collar, signed sterling medallion on hardwood shaft and a horn ferrule.

H. 1 ¾" x 2 ¼", O.L.-33 ½"
\$1,500-\$2,000



12.



9.



10.



11.



13.

13. Carved Ivory German Masterpiece Cane

Mid 18th Century-A massive ivory handle with full figure horses and deep carvings of what appears to be Zeus, pair of horse heads all done in the highest of relief, a true masterpiece, probably German, a closer look shows an Egyptian figure and a palm tree behind one of the horses and a dog behind the other, the ribs of the horse are very visible as are the bones in the horse heads, coin silver collar, thick malacca shaft and a horn ferrule.

H. 2 ¼" x 4 ¾", O.L.-34 ½"

\$5,000-\$7,000



14.

14. Japanese Ivory Lion Cane

Ca. 1890-A carved lion atop a mountain of rocks which has been "treed" by a group of rats, the lion has inset bone eyes as does the fierce pack of rats, silver collar, ebony shaft and a metal ferrule.

H. 1 ¾" x 5 ½", O.L.-35"

\$1,500-\$2,500

**15. Mongoose/
Cobra Carved
Dress Cane**

Ca. 1900-A fierce carved creature which is carved in a one-piece handle, raised sterling collar, ebony shaft and an ivory ferrule.

H. 4 ¼" x 5 ¼", O.L.-36 ¼"
\$400-\$500



15.

**16. Japanese Ivory
Baboon Cane**

Ca. 1890-A carved baboon swinging from a tree with India inked eyes looking at a dragon fly, atop the cane is a carved bat, unusual carved bamboo shaft with nine high relief baby baboons and a metal ferrule.

H. 1" x 7 ½", O.L.-42"
\$1,200-\$1,500



17.

**17. Ivory Dragon
Cane**

Ca. 1880-A carved ivory dragon handle with inlaid eyes, ornate silver collar with two high relief dragons, ebony shaft with a high relief carving of various scenes and people, metal ferrule.

H. 3 ¾" x 1 ¼", O.L.-36"
\$1,000-\$1,500



**18. Whale's Tooth
Scrimshaw Cane**

Ca. 1880-A whale's tooth with a sperm whale in high relief and the all seeing eye symbol, vine carving near the end cap which is a piece of exotic wood with an inlaid ivory heart, ivory shaft with baleen spacers and wood ferrule.

H. 4 ½" x 3", O.L.- 33 ½"
\$2,000-\$3,000



18.



16.



20.



19.



21.



19. Whale's Tooth Cane

Ca. 1865-A nice original whale's tooth with a pewter cartouche atop, natural grown grotesque vine shaft and a metal stopper.

H. 5" x 1 1/2", O.L.-36 1/2"

\$500-\$700

20. Ivory and Horn Sword Cane

Ca. 1870-A carved ivory head which is inlaid into a large piece of buffalo horn, silver metal collar, engraved 14" blade natural twigs spur shaft and a brass ferrule.

H. 2 3/4" x 4", O.L.-36"

\$1,500-\$2,500

21. "La Terrible" Defensive Cane

Circa 1870- This rare French cane is in fine working condition and does not reach the cane market often, see page 302 of Catherine Dykes Cane Curiosa for details of this "razor" cane, these were outlawed soon after they reached the market due to the damage that they inflicted, metal shaft and a metal ferrule. Finest working example that we have ever offered.

H. 1 1/2" x 2", O.L.-35"

\$4,500-\$6,000

22. Ivory Eagle Toledo Sword Cane

Ca. 1900-A carved eagle with inset eyes feasting upon a large snake, locking 23" signed Toledo blade, ornate sterling collar, thick ebony shaft and a metal ferrule.

H. 1 $\frac{3}{4}$ " x 4", O.L.-32"

\$1,500-\$2,500

23.



23. Automated Monkey Cane

Ca. 1900-A painted French push-button automated monkey, pair of moving glass eyes, push-button upper and lower lip that move, a protruding tongue, fine working condition, dark bamboo shaft and a metal ferrule.

H. 2" x 3", O.L. 33"

\$2,000-\$3,000



22.

24. Ivory Squirrel and Hands On Cane

Ca. 1875-A carved ivory hand with two squirrels done in the Victorian manner, full ivory cuff with buttons, sterling presentation collar, ebony shaft and a metal ferrule.

H. 1 $\frac{3}{4}$ " x 1 $\frac{1}{2}$ ", O.L.-34 $\frac{3}{4}$ "

\$1,500-\$2,000

24.



25. Ivory Naughty Leg Cane

Ca. 1860-A nice presentation of this genre, full engraved stocking and garter, silver metal collar, malacca shaft and a metal ferrule.

H. 3 $\frac{3}{4}$ " x 1 $\frac{1}{4}$ ", O.L.-32"

\$500-\$700



25.

26.

26. Owl Dress Cane

Ca. 1880-A large carved disc handle with two color glass eyes, probably Black Forest, ebonized shaft and a metal ferrule.

H. 3 1/4" x 1 1/2", O.L.-32 3/4"

\$500-\$700



27.

27. Stag Horn Rat Cane

Ca. 1890-A carved probably kangaroo rat, two color glass eyes, engraved metal collar, bamboo shaft and a metal ferrule.

H.4" x 3", O.L. 35 1/2"

\$600-\$900



28. Silver Snake Cane

Ca. 1880-A natural burl handle with a silver snake entwined throughout and the head of the snake is the end cap for the handle, silver metal collar, natural vine shaft and a metal ferrule.

O.L. 36 1/2"

\$500-\$700

29.

29. Shibayama Ivory Cane

Ca. 1890-A nice presentation of this style work with ten various bugs in tortoise, pearl and coral, a large beetle serves as an end cap, silver collar, faux bamboo shaft and a metal ferrule.

H. 3" x 33/4", O.L.-35"

\$1,400-\$1,800



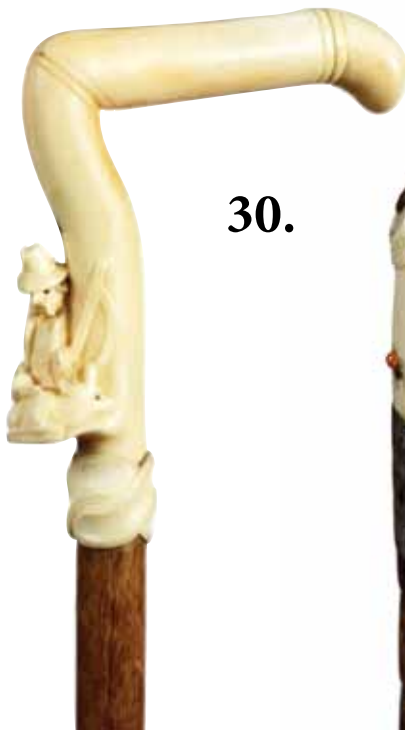
28.

30. Ivory Sportsman Cane

Ca. 1885-A carved ivory handle with a kneeling hunter with gun next to a deer, inlaid horn eyes, maple shaft and 2" ivory ferrule.

H. 4" x 5", O.L. 34 3/4"

\$500-\$700



30.

31. Ivory Elk and Wolf Cane

Ca. 1885-A high relief carving of three wolves attacking a giant elk, silver metal collar, fruitwood shaft and a metal ferrule.

H. 2 ¼" x 5 ¼", O.L. 36"

\$800-\$1,200

32. Big Bad Wolf Cane

Ca. 1850-A high relief carved wolf in a cape which is attacking a large rabbit, background has a large church steeple, fine carving with even the hair on the wolf very visible, ornate ivory collar, malacca shaft and a metal ferrule.

H. 2" x 7", O.L. 33"

\$2,000-\$2,500

33. Gold Dress Cane

Ca. 1890-A large gold-filled handle which was a 15th anniversary presentation to "John D. Bunn, 50th Anniversary", the diameter of the handle is larger than a U.S. silver dollar, ebonized shaft and a horn ferrule.

H. 2 ¼" x 2 ½", O.L. 34"

\$500-\$700

34. Ivory Lion Cane

Ca. 1910-A precise carving of a resting lion, a nice full figure example, engraved silver collar "Charles W. Sand, Milwaukee" thick exotic wood shaft and a horn ferrule.

H. 5" x 2", O.L. 37"

\$800-\$1,200

31.

34.

32.

33.





36.



35. Gold Dress Cane

Ca. 1890-An unmarked repousse gold dress cane, tested to be at least 10 karat, ebony shaft and a metal ferrule.

H. 3 1/2" x 1 3/4", O.L. 36"

\$600-\$800



35.

36. Erotic Nude Stanhope Cane

Ca. 1900-An ivory handle with a full frontal French nude with flowing hair reading a book, small metal collar, malacca shaft and a metal ferrule.

H. 3 3/4" x 1 1/4", O.L. 31"

\$1,000-\$1,500



37.



38.

37. Ivory Tiger Rug and Child Cane

Ca. 1880-An unusual carving of a young child in their nightgown pulling a tiger rug over their head, bronze end plate with the name "Dozkeh", natural twigspur shaft and a metal ferrule.

H. 4 1/2" x 2", O.L.-35 1/2"

\$1,500-\$2,500

38. Ivory Lion Dress Cane

Ca. 1900-A wonderful example of a battle between the king of the jungle and a vicious snake, high relief and pierced carvings throughout, fluted ornate gold-filled collar, ebony shaft and a metal ferrule.

H. 2 1/2" x 5 1/4", O.L.-38"

\$1,300-\$1,700



39. Victorian Ivory Dress Cane

Ca. 1875-A massive elephant ivory handle in high relief, great artistry applied to all the details in this handle, small ivory collar, exotic wood faux twigspur shaft and an ivory ferrule.

H. 2 1/2" x 4 1/2", O.L.-35 3/4"

\$1,000-\$1,500

40. Gold Dress Cane

Ca. 1910-A French hallmarked 18 karat gold collar and handle, hardwood shaft and a metal ferrule.

H. 1 1/2" x 2 1/4", O.L.-36"

\$600-\$1,000

41. Nuremburg Ivory Dress Cane

Dated 1897-A typical example of this genre of large ivory canes, the high relief cartouche is a suit of armor with ivory feather plumes on a helmet, German presentation collar, handle has a repaired crack on the rear, many of these are found with cracks due to the students using them to hit other students, ebony shaft and a horn ferrule.

H. 2 1/2" x 9", O.L.-34 1/4"

\$4,000-\$6,000

40.

41.

39.





42.



43.



44.



45.

46.



42. Ivory Lion Cane

Ca. 1900-A carved ivory lion with two color glass eyes, silver collar, exotic wood shaft and a horn ferrule.
H. 5" x 1 3/4", O.L.-32 1/2"
\$500-\$700

43. Ivory Cherub Cane

Ca. 1880-A long ivory handle carved in high relief with nine cherubs doing various things like playing musical instruments and posing, brass collar, ebonized shaft and a horn ferrule.
H. 1 1/4" x 11", O.L.-37"
\$1,000-\$1,500

44. Japanese Ivory Carp Cane

Ca. 1890-A carved ivory handle of a large school of Asian carp with inlaid eyes, a makers signature with two Japanese characters done in red ink, ornate gold-filled collar, twigspur shaft and a horn ferrule.
H. 3/4" x 7", O.L.-39 1/2"
\$600-\$900

45. Ivory Gypsy Lady Cane

Ca. 1890-A large ivory carving of a lady in gypsy attire, gold metal collar, malacca shaft and a horn ferrule.
H. 1 3/4" x 2 3/4", O.L.-36"
\$600-\$900

46. Ivory Courting Cane

Ca. 1850-A full figure carved couple, probably French, high relief, gold-filled collar, ebony shaft and a metal ferrule.
H. 1 1/4" x 1 1/2", O.L.-38 3/4"
\$1,000-\$1,500

47. Gigantic Dog Cane

Ca. 1920-The handle which is as large as a grapefruit is probably a Doberman or you make the decision, two color glass eyes and a painted mouth, 1 3/4" hardwood shaft, woven silver collar and a horn ferrule.

H. 4 1/2" x 3 3/4", O.L.-35 1/2"
\$500-\$1,000

48.



48. Automated Ivory Alligator

Ca. 1900-A carved ivory gator with a push button mechanism, when the button is pushed the lower jaw drops and the long red tongue falls, hallmarked with the initials "J.D.", other marks unreadable but probably British, mechanism works but could use some tweaking, silver metal collar, ebony shaft and a metal ferrule.

H. 4 3/4" x 1 1/2", O.L.-35 3/4"
\$1,500-\$2,500

47.

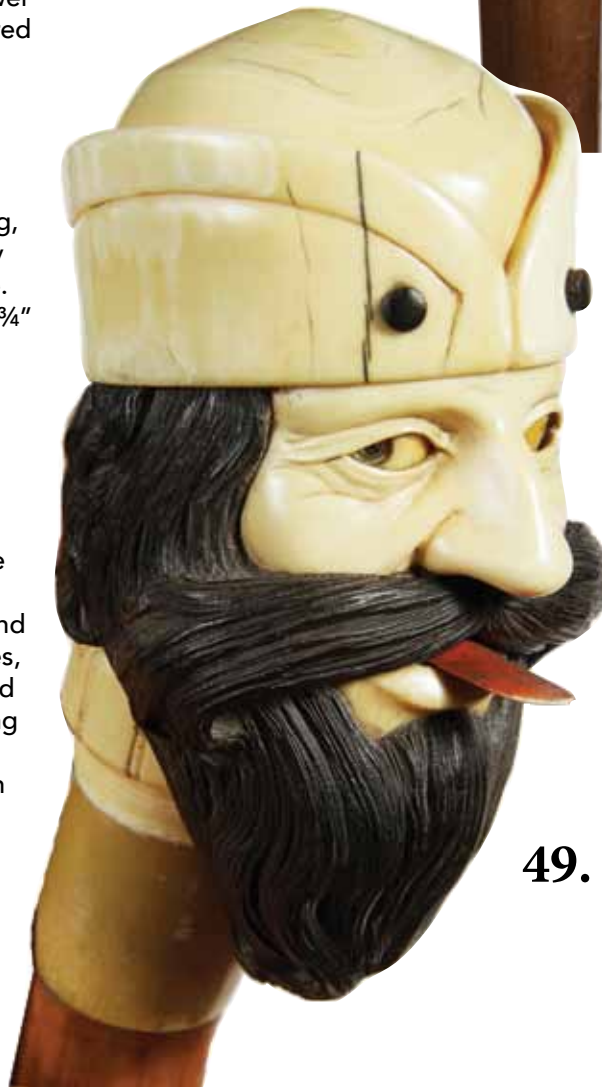


49. Automated Ivory Rabi

Ca. 1900-An unusual automation with a push button mechanism in the rear, when the button is pushed the eyes cross and the red tongue protrudes, carved in great detail and the mechanism is working perfectly, ivory collar, malacca shaft and a horn ferrule.

H. 3" x 3 1/2", O.L.-35 1/2"
\$4,000-\$6,000

49.





51.



50.



50. Japanese Octopus/ Ape Cane

Ca. 1890-A unique carving of an octopus attacking a mother ape trying to protect her child, silver metal collar, bark wrapped hardwood shaft with a center ivory collar and a metal ferrule.

H. 1 1/2 " x 4", O.L.-34 3/4"

\$1,200-\$1,800

51. Anti-Semitic Stag Cane

Ca. 1930-A carved stag handle with anti-Semitic representations, push-button on rear which makes the tongue protrude under the nose, natural twigspur shaft and a stag and metal ferrule.

H. 4 3/4 " x 4", O.L.-35"

\$500-\$1,000

52. Celluloid Dress Cane

Ca. 1910-An early "French Ivory Celluloid" of a lady lying on a tiger rug, ornate gold-filled collar, hardwood umbrella shaft and a metal ferrule.

H. 4 3/4 " x 2", O.L.-36"

\$250-\$350



53.



53. Japanese Raccoon Ivory Cane

Ca. 1890-A fully carved handle with a raccoon being attacked by a snake, silver metal collar, ebony shaft and a horn ferrule.

H. 1 3/4 " x 2 1/4", O.L.-37 1/4"

\$800-\$1,200



52.

54. Ivory Turtle/Talon Cane

Ca. 1890-A nice example of a talon clutching a large sea turtle, probably Japanese, silver metal collar, hardwood shaft and a metal ferrule.

H. 1 ¼" x 5 ¼", O.L.-36 ½"

\$500-\$800



54.



55.

55. Ivory Dog Cane

Early 20th Century-A very nicely carved spaniel or sitter with two color glass eyes, worked silver collar, hallmarked "J.H.", malacca shaft and a brass ferrule.

H. 3" x 2", O.L.-30 ½"

\$900-\$1,200

56. Ivory Stanhope Nude Cane

Ca. 1890-A nice Stanhope in perfect viewing condition of a reclining full frontal nude lady, coin silver collar, malacca shaft and a metal ferrule.

H. 3 ¾" x 1 ¼", O.L.-34"

\$1,000-\$1,500

56.



57. Ivory Boar and Hound Cane

Ca. 1900-A double carved ivory handle with a pair of two color glass eyes, ornate gold-filled collar, exotic wood shaft and a brass ferrule.

H. 4 ¼" x 1 ¼", O.L.-35 ½"

\$1,000-\$1,500



57.





58.

58. Automated Ivory Skull

Dated 1888-A fine example with moving eyes, protruding tongue and moving jaw, the action happens when you push an ivory button in the rear, silver metal collar inscribed "Paris 1888", bamboo shaft, working mechanism that could use tweaking and a metal ferrule. H. 2" x 2", O.L.-35" **\$2,500-\$3,500**



59.

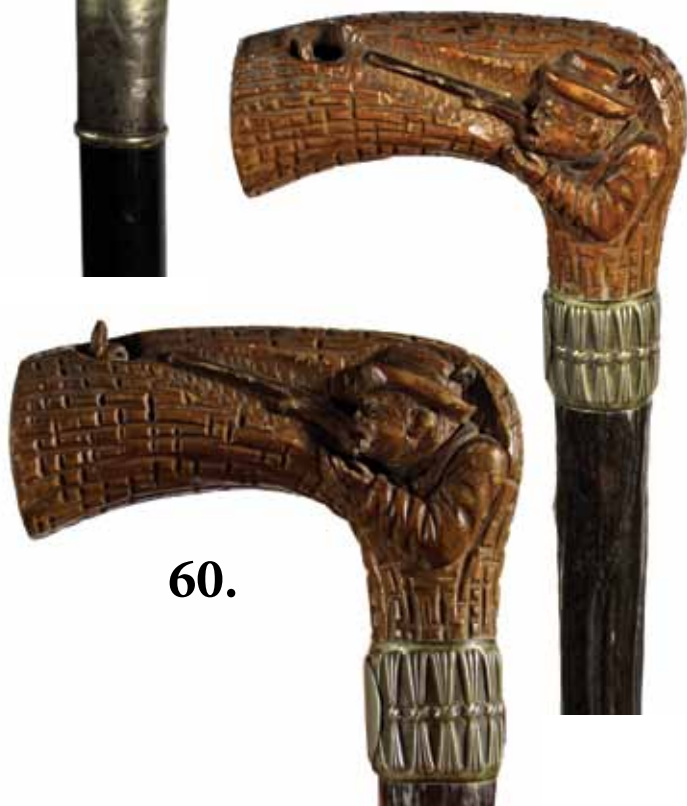
59. Ivory Lioness Cane

Ca. 1880-A carved ivory handle with faceted clear eyes, signed 800 silver collar, hardwood shaft and a brass ferrule. H. 2" x 2 1/2", O.L.-33" **\$400-\$600**



60. German Automated Cane

Early 20th Century-A carved briarwood handle with a pushbutton mechanism which forces a spring loaded rabbit to jump up so the stationary hunter can take aim, ornate silver metal collar, natural vine shaft and a metal ferrule. H. 3 3/4" x 3", O.L.-35 1/2" **\$1,000-\$1,500**



60.

61. Chinese Perfume Cane

Ca. 1900-A Chinese perfume or "spitting" cane with a push-button mechanism, bamboo shaft and a brass ferrule. H. 1 1/2" x 2 1/2", O.L.-35" **\$1,200-\$1,800**

61.

62. 82nd Airborne Cane

Mid 20th Century Pre Ban-
"Fuzz's" personal cane who
must have been a member,
three skulls with red glass
eyes, parachute top, this cane
represents their motto "Death
from Above", ebony shaft and
an ivory ferrule. (No ship to NY,
NJ or Ca.)

H. 2" x 3", O.L.-35 1/2"

\$1,200-\$1,800



62.

63. Elk Horn Dress Cane

Ca. 1925-A carved horn elk
with two color glass eyes, silver
collar, natural branch shaft and a
brass ferrule.

H. 3" x 3", O.L.-34"

\$400-\$500



63.

64. Ivory Horse Cane

Ca. 1910-An ivory horse head
with a 14 karat bridal, two
color glass eyes, 14 karat collar,
cherry shaft and a horn ferrule.

H. 4" x 1 1/2", O.L.-34 3/4"

\$1,800-\$2,500

64.



65. Automated Ivory Monkey Cane

Ca. 1890-A nicely carved
example in fine working
condition, spring loaded
button makes the eyes roll to
a different color, the lower jaw
falls and the tongue protrudes
ivory collar, bamboo shaft and a
horn ferrule.

H. 2" x 2", O.L.-36 1/4"

\$2,000-\$3,000



65.



67.



66.

66. French Ivory Dress Cane

Ca. 1880-A carved lady fresh from the vineyard, copper metal collar, maple shaft and a metal ferrule.

H. 1 $\frac{3}{4}$ " x 4 $\frac{1}{2}$ ", O.L.-36 $\frac{1}{2}$ "

\$1,200-\$1,800

67. Ivory Bull Dog Cane

Ca. 1900-A carved ivory bull dog with two color glass eyes, fierce carved mouth and teeth, small ivory collar, hardwood shaft and a metal ferrule.

H. 3" x 2 $\frac{3}{4}$ ", O.L.-32 $\frac{1}{2}$ "

\$1,000-\$1,500



68.



69.

68. Ivory Dog Sword Cane

Ca. 1880-A carved walrus ivory handle which is inscribed "H. W. Rogers, Boston", pair of brass collars, 14 $\frac{1}{2}$ " etched and gilded blade, working locking mechanism, malacca shaft and a horn ferrule.

H. 3 $\frac{1}{2}$ " x 4 $\frac{1}{2}$ ", O.L.-34 $\frac{3}{4}$ "

\$1,500-\$2,500

69. Ivory Nude Cane

Early 20th Century-A full figured carved nude which is hugging Bacchus, high relief carving both front and rear, gold metal collar, exotic wood shaft and a horn ferrule.

H. 1 $\frac{3}{4}$ " x 5 $\frac{1}{4}$ ", O.L. 36 $\frac{1}{2}$ "

\$2,500-\$3,500

70. Ivory Cat Cane

Early 20th Century-A carved ivory massive cat handle done in great detail, hallmarked "W. N.", British collar, malacca shaft and a metal ferrule.

H. 2" x 5 1/4", O.L.-35 3/4"

\$3,000-\$3,500

71. Ivory Cat Cane

Ca. 1900-A whimsical carving of two cat families, one hammering at rats with an umbrella and the other two dressed in their Sunday best, unreadable hallmarked gold collar, exotic wood shaft and a horn ferrule.

H. 4" x 2", O.L.-36"

\$2,000-\$3,000



70.



71.



74.

72. Native American Ivory Cane

Ca. 1900-A rarely offered Native American ivory cane, a full figure carving of two subjects of which one is hidden inside of a log, great detail is paid to every portion of this cane, silver collar, hardwood shaft and a silver metal ferrule.

H. 4 ½" x 2", O.L- 34 ¼"

\$3,000-\$5,000

73. Ivory Alligator Cane

20th Century-A pig ivory double alligator carving, large sterling collar made by Charles Dougherty, malacca shaft and an ivory ferrule.

H. 6 ¼" x 3", O.L.-37 ¼"

\$700-\$1,000

74. Art Nouveau Ivory Cane

Ca. 1890-A carved high relief ivory handle with two maidens, silver collar, faux bamboo wood shaft and a metal ferrule.

H. 1 ½" x 6 ¼", O.L.-36"

\$600-\$900



72.



73.

75. Art Deco Ivory Dog Cane

Ca. 1910-A carved ivory greyhound or whippet with a silver muzzle, two color glass eyes, silver belt buckle collar, seven sterling inlaid flowers in the hardwood shaft and a horn ferrule.
H. 4 1/4" x 2", O.L.-32"
\$1,200-\$1,800



75.

76. Ivory Devil Cane

Ca. 1900-A fully carved handle in high relief, hallmarked 14 karat gold collar, fancy exotic wood shaft and an ivory ferrule.
H. 1 3/4" x 4 1/2", O.L.-35"
\$1,000-\$1,500

77.



76.



77. Ivory Pear Cane

Ca. 1890-A nicely carved ivory pear of the Art Nouveau period, lignum vitae wood shaft and no ferrule.
H. 1 3/4" x 4 1/4", O.L.-39 1/4"
\$600-\$900

78. Ivory Sword Cane

Ca. 1890- Carved Ivory Skull cane, etched signed French Parsons ornate 25" blade, silver collar, exotic wood shaft and a copper ferrule.
H. 1 3/4" x 4 1/4", O.L.-37 1/2"
\$1,000-\$2,000

78.

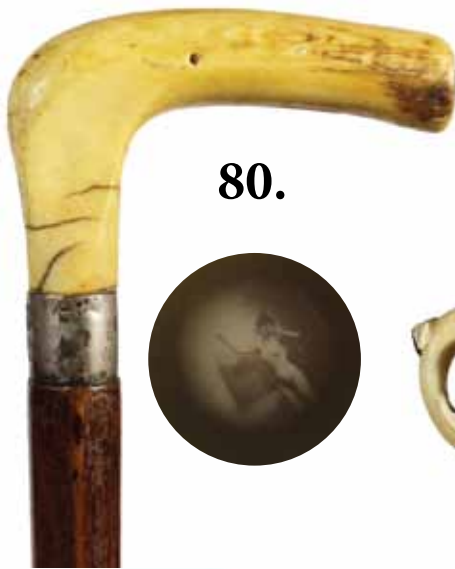


79.



79. Ivory Scarab Cane

Ca. 1900-A carved ivory Egyptian style beetle, thick malacca shaft and an ivory ferrule.
H. 2" x 3", O.L. 35 3/4"
\$500-\$1,000



80.

80. Ivory Nude Stanhope Cane

Ca. 1890-A Stanhope ivory handle with a French image of a full frontal nude smoking a cigar, nice clear image, silver metal collar, malacca shaft and a horn ferrule. H. 4" x 2 1/2", O.L. 32"
\$1,300-\$1,800



81.

81. Chinese Ivory Dragon Cane

Ca. 1890-A carved ivory dragon with two color glass eyes, probably a cheroot holder, ornate brass collar, ebony shaft and a horn ferrule. H. 5" x 1 1/2", O.L. 35 1/2"
\$500-\$1,000

82.



82. Ivory Sword Cane

Ca. 1870-A large carved ivory handle with a pair of lions which have serpent tails, silver attachments, two color glass eyes, coin silver collar, 25" four sided etched and blued blade, bamboo shaft and a metal ferrule. H. 2 1/2" x 6", O.L. 40"
\$1,800-\$2,500

83.



83. Damascus Dress Cane

Late 19th Century-A near mint example of this fine steel work with an engraved Roman soldier, signed sterling collar, hardwood shaft and a horn ferrule. H. 1 1/2" x 1", O.L. 33 1/4"
\$700-\$1,200

84.



84. Ivory Dress Cane

Ca. 1900-A carved ivory sinister gentleman in a hooded cape, silver metal collar, ebonized shaft and a horn ferrule. H. 1 1/4" x 2 1/4", O.L. 35 1/2"
\$400-\$600

85. Silver and Cameo Dress Cane

Ca. 1890-A faceted glass or crystal cameo atop, ornate Art Nouveau silver handle with foliage, silver metal collar, hexagonal shaft and no ferrule.
H. 1 3/4" x 3", O.L. 34 1/4"
\$1,000-\$1,500



85.

86. Ivory Telescope Cane

Ca. 1885-An unusual Damascene gauntlet handle which holds an ivory and brass working telescope, telescope rotates within the hand, ebonized shaft and a brass ferrule.
H. 3" x 3 1/4", O.L.-35"
\$1,500-\$2,000



86.

87. Memento Mori Ivory Dress Cane

Ca. 1880-A carved ivory handle of a gentleman and a skull, sterling collar, malacca shaft and horn ferrule.
H. 1 3/4" x 4 1/4", O.L.-36 1/2"
\$1,000-\$2,000

87.



88. Happy Buddha Ivory Cane

Dated 1890-An Asian carving of a Buddha with inlaid eyes, large presentation silver collar engraved with a fisherman inscribed "Oyster Bay Polo Tennis Club, Egg and Spoon Race First Prize 1890", malacca shaft and a horn ferrule.
H. 1 1/4" x 1 3/4", O.L.-35"
\$800-\$1,200



88.

89. Ivory Jester's Cane

Ca. 1900-A fully carved handle front and back with a jester in its hat, silver metal collar, malacca shaft and a metal ferrule.
H. 2' x 3 1/2", O.L.-37 1/4"
\$800-\$1,500

89.





91.



90. Japanese Ivory Cane

Ca. 1890-A carved ivory figure with inlaid horn eyes which is trying to catch a large rat with an apparatus that has a single Japanese cartouche, silver metal collar, hardwood shaft and a horn ferrule.

H. 1 ½" x 5", O.L. 38 ¼"

\$1,000-\$1,500

91. Japanese Ivory Turtle Cane

Ca. 1890-A very detailed and natural carving of a large nest of sea turtles, some with inlaid bone eyes, signed with a double Asian character cartouche, white metal collar, ebonized shaft and a metal ferrule (seeing is believing).

H. 1 ½" x 3 ½", O.L.-35 ½"

\$1,200-\$1,800

90.



92. Automated Ivory Lobster Claw Cane

Ca. 1890-A large carved ivory claw, the lower claw is spring loaded and was probably used as a glove holder at a fancy event, silver metal collar, well worked twigspur hardwood shaft and an ivory ferrule.

H. 5 ¼" x 2", O.L.-34 ½"

\$2,500-\$3,000

93. Stag Alligator Cane

Ca. 1910-A large carved full figure gator done in high relief, ornate signed sterling collar, malacca shaft and a horn ferrule.

H. 6" x 3", O.L. 36 ½"

\$500-\$800

92.

93.

94. Staghorn Elk Cane

Ca. 1875-A carved handle with a silver muzzle, long extending antlers with red glass eyes, hammered silver collar, malacca shaft and a metal ferrule.

H. 5" x 2 1/2", O.L. 36 1/2"

\$400-\$700



94.

95. Ivory Dress Cane

Ca. 1875-A carved walrus ivory handle, ornate silver studded collar, exotic natural grown shaft and a metal ferrule.

H. 4" x 1 3/4", O.L. 34 3/4"

\$400-\$600



95.

96. Whale's Tooth Nautical Cane

Ca. 1875-A carved whale's tooth handle once belonging to "Capt. J. Braly Fairhaven" carved atop the handle, handle has two whales with baleen eyes done in high relief, coin silver British collar, thick malacca shaft and a metal ferrule.

H. 4 1/2" x 1 3/4", O.L. 34 1/2"

\$2,000-\$2,500



96.





98.



97.



97. Japanese Stag Horn Cane

Ca. 1890 - Depicts the eternal struggle between Shoki, the legendary Demon-Queller and Oni, the Demon-Imp. Shoki is depicted with his typical hat and flowing beard with his bare sword held by his belt as he cradles the as though about to capture him. Oni, with his eyes uplifted and a broad smile, seems to know differently, engraved silver collar and horn ferrule. H. 2 3/4" x 4 1/4", O.L.-34 3/4" \$1,500-\$2,500

98. Ivory Sword Cane

Ca. 1890-A carved ivory portrait cane of a person in a unique head dress and a fur collar, ornate belt buckle silver collar, signed Toledo 24" blade with blood groove and etching, bamboo shaft and a metal ferrule. H. 2" x 4 1/4", O.L. 38 1/2" \$1,200-\$1,800



99.



99. Ivory Nude Stanhope Cane

Ca. 1890-A full frontal French nude in perfect visible condition, silver metal collar, ebonized shaft and a metal ferrule. H. 4 1/4" x 1 1/4", O.L. 34" \$1,200-\$1,800



100.

100. Asian Ivory Cane

Ca. 1890-A large ivory handle with four different carved faces, hallmarked "J.B.", hardwood shaft and a metal ferrule. H. 2" x 4", O.L. 38 3/4" \$1,200-\$1,800

101. Art Deco Dress Cane

Ca. 1920-An Art Deco silver handle inscribed silver collar, malacca shaft and a horn ferrule.

H. 4" x 2", O.L.-34 ¾"

\$400-\$700

102. Ivory St. Bernard Cane

Ca. 1880-A carved standing dog once belonging to "Arthur Emory", carved front and back, ornate sterling collar, hardwood shaft and a silver metal ferrule.

H. 1 ¾" x 4 ¼", O.L. 38"

\$800-\$1,200

103. Nude Stanhope Cane

Ca. 1890-A full frontal reclining nude of an exotic French lady, faux bamboo hardwood shaft and a metal ferrule. O.L. 36 ¼"

\$800-\$1,200

104. Ivory Alligator Cane

Ca. 1910-A full length carved gator with the tail wrapping to the underside, signed sterling collar, worked twigsprur shaft and a metal ferrule.

H. 4 ¼" x 1 ½", O.L.- 34"

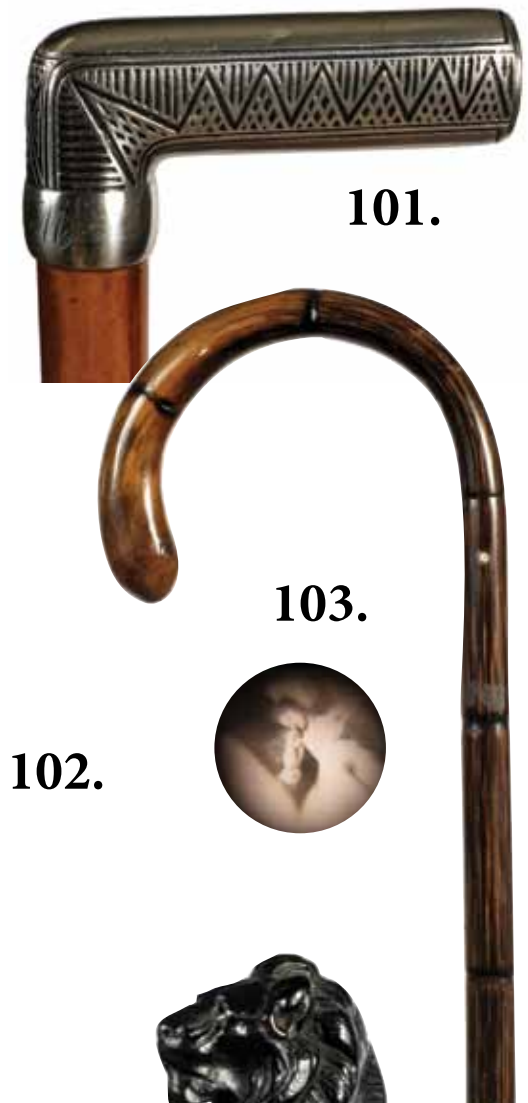
\$800-\$1,200

105. Carved Lion Cane

An ebony carved lion standing on a branch, signed sterling collar, ebony shaft and a metal ferrule.

H. 3" x 4", O.L.-38"

\$500-\$800





106.



107.

109.



108.



110.

106. Ivory Bulldog Cane

Ca. 1850-A carved ivory bulldog with two color glass eyes, silver muzzle and collar, partrigewood shaft and a 2 ½' brass ferrule.

H. 2 ¼" x 1 ½", O.L. 36 ½"

\$1,000-\$1,400

107. Cloisonné Asian Cane

Ca. 1890-A robin's egg blue background with various colors, fine condition, ebony shaft and a metal ferrule.

H. 1 ¼" x 7 ¼", O.L. 35 ¾"

\$1,000-\$1,500

108. Silver Talon Cane

Dated 1904-A silver plated claw with original nails, silver collar, stepped partrigewood shaft and a metal ferrule.

H. 4" x 5", O.L. 38"

\$400-\$600

109. Paperweight Dress Cane

Ca. 1910-An art glass handle, once belonging to "Ethel J. Smith", pewter collar, a pair of sterling lower collars, hard rock maple shaft and a metal ferrule.

H. 2" x 1 ¼", O.L. 35 ¼"

\$300-\$500

110. Sterling Dress Cane

Ca. 1890-A hammered sterling handle, thick malacca shaft and a horn ferrule.

H. 1 ¼" x 1 ½", O.L. 35 ½"

\$200-\$300

111. Ivory African King

Ca. 1910-A large carved African king in head dress, ornate gold-filled collar, beautiful snakewood shaft and a metal ferrule.

H. 2 1/4" x 3 3/4", O.L. 36"

\$800-\$1,200

112. Shoe Advertising Cane

Late 19th Century-A nice silver on pewter high button shoe with "Tis a Feat to Fit Feet 1204 and 6 Market St.", large rope metal collar, twig spur shaft and a metal ferrule.

H. 4' x 3 1/4", O.L. 34 1/2"

\$350-\$500

113. Japanese Ivory Dress Cane

Ca. 1890-A carved ivory handle with many faces, inlaid bone eyes, ivory collar with a smiling ape and the initials MRA, hardwood shaft and a metal ferrule.

H. 1 1/2" x 2 1/2", O.L. 35 1/4"

\$500-\$700

114. Nude Stanhope Ivory Cane

Ca. 1880- A full frontal nude of a French model, silver collar, three lower belt buckle silver collars, maple shaft and a metal ferrule.

H. 3 1/4" x 1 3/4", O.L. 34"

\$900-\$1400

115. Ivory Dress Cane

Ca. 1875-A long carved ivory handle with both mother and daughter portraits, tassel and berry carving, silver metal collar, ebonized shaft and a horn ferrule.

H. 7/8" x 8", O.L. 33 3/4"

\$500-\$700

112.



113.



115.

111.



114.





116.

116. Amber and Pearl Jewelry Cane

Ca. 1880-A very fine example in the field of objects of virtue, the head of the dog is carved in mother of pearl with gemstone eyes, karat gold collar, amber dog body, silver metal collar, 3" amber spacer, another silver metal collar, ebony shaft and a horn ferrule.

H. 1 3/4" x 5 1/4", O.L. 35 1/4"

\$4,000-\$5000



117.

117. Pearl Dog Dress Cane

Ca. 1885-A uniquely carved probably French dress cane with small jewel eyes and great pearl luster, "almost an opal luster", ornate fluted gold filled collar with woven tassel, ebony shaft and a horn ferrule.

H. 1 3/4" x 1 1/2", O.L. 38 3/4"

\$1,000-\$2,000



118. Porcelain Dress Cane

Ca. 1900-A bare breasted maiden dressed in leopard skin, probably French and in fine condition, gold metal collar, partrigewood shaft, two very small hairline striations and a brass ferrule.

H. 5" x 3", O.L. 33 1/2"

\$1,000-\$2,000

**119. Meissen Style
Porcelain Cane**

Ca. 1880-A beautiful
porcelain example in fine
condition retaining 95%
of its original decoration,
small metal collar,
partrigewood shaft and a
metal ferrule.

H. 1 ½" x 2 ½", O.L. 29 ½"
\$2,000-\$3,000



119.

**120. Porcelain
Dress Cane**

Ca. 1900-A small porcelain
French paste handle, fine
condition, hardwood shaft
and a metal ferrule.

H. 1 ¼" x 4", O.L.-38 ¾"
\$400-\$500



120.

**121. "Johnny
Walker" Porcelain
Cane**

Early 20th Century- a
porcelain handle which
looks much like Johnny
walker, brass collar, inlaid
pearl black lacquer shaft,
and a horn ferrule.

H. 1 ¼" x 2", O.L. 35"
\$300-\$500



122.

**122. Royal Satsuma
Porcelain Cane**

Ca. 1880-A decorated
handle with ducks and
lilies in fine condition,
heavy gold work on leaves
and flowers, silver metal
collar, exotic wood shaft
and a metal ferrule.

H. 1 ½" x 5", O.L. 35"
\$1,500-\$2,000



121.



123.

123. Massive Wedgwood Style Cane

Ca. 1885-A beautiful high relief jasper wear cameo Greek scene which is probably Wedgwood, two full figured ladies and trees, this type of cane is rarely seen and extremely hard to find, 1 5/8" ebonized shaft and a horn ferrule.

H. 2" x 5 1/2", O.L. 38"

\$3,000-\$4,000

124. Jasper Ware Dress Cane

Ca. 1885-Truly a fine dress cane with a silver handle and silver collar, paint decorated hardwood shaft and no ferrule.

H. 3/4" x 4 1/2", O.L. 40"

\$1,000-\$1,500

125. Art Nouveau Silver Cane

Ca. 1890-A silver overlaid wood handle with various women sitting in a grape arbor and a young child and bird on the rear, silver metal collar, hardwood shaft and a metal ferrule.

H. 1 1/2" x 8", O.L. 36 1/2"

\$400-\$600



125.



125.

126. Ivory Sword Cane

Ca. 1830-An early example with a coin silver collar and two silver eyelets, 12 ½" engraved blade, second silver collar, walnut shaft and a 2" brass ferrule.

H. 1 ½" x 1 ¾", O.L. 34"

\$1,300-\$1,800



126.

127. Watch and Sword Cane

Ca. 1900-An unusual dual purpose cane with a silver pocket watch atop hidden by a pushbutton mechanism, a 7 ½" hand worked blade with Asian characters, silver metal collar which doubles as a pushbutton mechanism for the blade, ornate carved bamboo shaft with foliage, owls, carp and various other Japanese items, shaft is signed with 17 characters, unusual bimetal ferrule.

H. 5" x 1 ¾", O.L. 36 ¾"

\$1,500-\$2,500



128.

130.



129.



128. Anti Semitic Folk Art Cane

Ca. 1925-A one piece massive carved anti Semitic cane probably German, tree bark natural shaft and a partial metal ferrule. O.L. 43 ½"

\$500-\$1,000



129. Nude Folk Art Cane

Ca. 1900-A half carved hardwood shaft with a gentleman with a cigar, cane and derby, full frontal nude, various hands acorns and flowers, original patina and a metal ferrule. O.L. 37 ½"

\$500-\$1,000



130. Folk Art Bear Cane

Ca. 1920-A carved folk art bear with two color glass eyes, natural branch shaft and a metal ferrule.

H. 4" x 4 ½", O.L. 33 ½"

\$400-\$500



127.



131.



132.

131. Nautical Woven Sailor's Cane

Ca. 1880-A large woven and knotted sailor's cane with original patina and very well done and a metal ferrule. O.L. 36"
\$700-\$1,000

132. Silver Knob Folk Cane

Ca. 1890-A silver over copper over burl handle, twigspur shaft and a metal ferrule. H. 2 1/4" x 4 1/2", O.L. 34 1/2"
\$400-\$500



135.

133. Folk Art Bear Cane

Ca. 1920-A carved full figure bear with two color glass eyes, probably Black Forest, hardwood shaft and a horn ferrule. O.L. 32 1/2"
\$400-\$600

134. Art Deco Ivory Dress Cane

Ca. 1920-An ivory knob inscribed "A.A.W.", signed 14 karat collar, slick ebony shaft and a horn ferrule. H. 1 1/4" x 1 1/4", O.L. 36"
\$400-\$500



134.



133.

135. Silver Watch and Ivory System Cane

Ca. 1885-An early compartment cane which houses a painted porcelain watch, twig spur ivory spacer, ornate silver collar, exotic wood shaft and a metal ferrule. H. 1 1/2" x 7", O.L. 39"
\$700-\$1,000

136. Ivory Dress Cane

Ca. 1875-A nicely carved ivory dress cane with an amour crest and flumed helmet, ornate carved ivory collar, ebony shaft and a metal ferrule.

H. 2" x 6 1/2", O.L. 40 1/4"

\$600-\$1,000

137. Silver Dress Canes

Ca. 1910-A pair of signed sterling silver dress canes both with ebony shafts and horn ferrules. Longest 36"

\$250-\$400

138. Far Eastern Ivory Cane

Ca. 1910-A nice example of this genre of cane with ivory and mother of pearl insets and a metal ferrule. O.L. 35 3/4"

\$350-\$450

139. Anglo Indian Ivory Cane

Ca. 1910-A carved animal cat with ivory in its mouth, inlaid bone eyes, exotic wood collar, ivory inlaid hardwood shaft and a horn ferrule.

H. 1 1/2" x 1 1/4", O.L. 38"

\$500-\$600

140. Ivory Lady Cane

Ca. 1890-An elegant carving of a young lady with inset eyes, ivory pearls in her Sunday finest, a pair of lanyard holes, thick ebony shaft and a metal ferrule.

H. 1 1/2" x 3 1/4", O.L. 37 1/2"

\$500-\$1,000



136.

137.



138.

139.



140.





141. Folk Art Animal Canes

Ca. 1920-A group of three folk art canes with snakes, alligators, lizards, hands and hearts-Longest 39 3/4"

\$500-\$1,000

142. Mikilla Defensive Cane

Ca. 1900-A nice example with a horn handle, brass collar signed "Bidekari" wove n leather handle, ornate engraved ferrule, handle unscrews to produce a 3" pike blade and a unique pike ferrule. H. 1 1/4" x 8 1/4", O.L. 36 1/2"

\$500-\$800

143. Folk-Art Cane

Dated 1986- A one piece cane carve with rope and tassel and a long vine with painted green leaves. American oak and no ferrule. O.L. 34 1/4"

\$250-\$400

144. Folk Art Alligator Cane

Ca. 1900- A one piece carved cane with a larger gator, pistol various mining tools, anchors , saloon leg and snakes, metal handle atop and a metal ferrule. O.L. 34 3/4"

\$300-\$500

145. Capt. S. H. Ford's Nautical Cane

Ca. 1880- A whalebone handle with two high relief carved whales and fraternal symbols, inscribed silver collar " Capt. S H Ford, Stoneington, Conn.", malacca shaft, and a metal ferrule. H. 3 1/2" x 1 3/4", O.L. 33"

\$1,500-\$2,500

146. Inlaid Folk Cane

Ca. 1930- Hundreds of pieces of inlay including various woods and mother of pearl, silver metal color, could be prison made, and a metal ferrule. O.L. 34 1/4"
\$300-\$500

147. Defensive Folk-Art Cane

Ca. 1920- A stacked leather disk cane with mother of pearl inlay, highest quality of this type of work, handle is heavy to double as a billy club and is iron mounted, metal ferrule. O.L. 34 1/2"
\$300-\$500

148. Lucite Flower Cane

Ca. 1940- Lucite handle with orange flower in full bloom, hardwood shaft and no ferrule. H. 1 3/4" x 1 1/2", O.L. 35 1/2"
\$100-\$200

149. Lucite Gold Fish Cane

Ca. 1945- Lucite aquarium handle with large fish and grass, white metal collar, hardwood shaft and a metal ferrule. H. 1 3/4" x 1 1/2", O.L. 35"
\$150-\$250

150. Bakelite Race Horse Cane

Ca. 1930- A butterscotch handle with a jockey and horse inlaid atop, silver metal collar, stepped partridge wood shaft and a metal ferrule. H. 2" x 1 1/4", O.L. 36 3/4"
\$200-\$400

151. Bakelite Terrier Cane

Ca. 1935- Bakelite handle with a terrier dog inlaid atop, small silver collar, hardwood shaft and a metal ferrule. H. 1 3/4" x 4 1/2", O.L. 34"
\$150-\$250

147.**148.****146.****150.****149.****151.**

153.



152.



152. Bakelite Polo Player Cane

Ca. 1935- Green bakelite handle with a polo player in full attire atop, silver metal collar, hardwood shaft, and metal ferrule.

H. 2" x 1 1/4", O.L. 34 1/4"

\$150-\$250

153. Art Nouveau Ivory/Silver Cane

Ca. 1890- A silver metal overlaid ivory handle with various flowers, silver ring collar, exotic wood shaft and a metal ferrule.

H. 4" x 1 1/2", O.L. 30 3/4"

\$500-\$600

154. Lucite Flower Cane

Ca. 1945- Large Lucite handle with a large blooming flower which appears to be floating in water, stepped hardwood shaft and a metal ferrule.

H. 1 3/4" x 3 1/4", O.L. 36"

\$150-\$250

154.



156.



155.



155. Lucite Defensive Cane

Ca. 1945- A weighted handle with a blooming flower in multi-colors, heavy lead collar, hard wood shaft and a copper ferrule.

H. 1 1/2" x 2", O.L. 35 1/4"

\$100-\$200

156. Stag Anti-Semitic Cane

Ca. 1940- A massive stage handle, probably German ebonized shaft, and a metal ferrule.

H. 9' x 5 1/2", O.L. 41 1/4"

\$400-\$600

157. Ivory Dress Cane

Ca. 1800- An early ivory handle with silver metal collar, pair of silver eyelet's , malacca shaft, and a 5" brass ferrule.

H. 1 ½" x 1 ¾", O.L. 33 ¾"

\$400-\$600

158. Silver Poppy Cane

Ca. 1890- An acid etched silver handle with poppy flowers and stem. Dented atop, stepped partrigewood shaft and a metal ferrule.

H. 1 ¼" x 2 ¼", O.L. 35 ½"

\$150-\$250

159. Silver Dress Cane

Ca. 1900- An ornate silver handle, belt buckle silver collar, cherry wood shaft, and a metal ferrule.

H. 1" x 1 ½", O.L.-36 ¼"

\$300-\$400

160. Flashlight System Cane

Early 20th- A metal flashlight light cane with original lenses and push button, just add batteries, fine condition, hardwood shaft and a horn ferrule.

H. 4 ½" x 2 ½", O.L. 34"

\$300-\$400

161. Gold- Filled Dress Cane

Dated 1881- Engraved handle with a Christmas presentation, ebony shaft and a metal ferrule.

H. 1 ¼" x 2", O.L. 35"

\$200-\$300



157.



158.

159.



160.



161.





163.



164.

162.



162. Bone Chain Dress Cane

Ca. 1900- a one piece carved bone handle in the form of a chain (could be Odd Fellows), ornate silver metal collar with four different colored stones, hardwood shaft and a horn ferrule.

H. 1 1/4" x 4 1/2", O.L. 34 1/2"

\$400-\$700

163. Three Silver Metal Dress Canes

Average length 35"

\$200-\$300

164. Gold Dress Cane

Ca. 1895- Gold-filled ornate handle with various flowers including roses, ebony shaft and a metal ferrule.

H. 1 3/4" x 2 1/4", O.L. 35"

\$200-\$300

165. Football " Orange Bowl" Miami Cane

Dated 1940- Nice example of the 1940 Orange Bowl map and event cane, spring loaded pull out map, hardwood crook handle shaft, and a metal ferrule. O.L. 35"

\$250-\$500

166. Pair of Antique Staghorn Canes

Good shafts and both with metal ferrules. Average length 35"

\$100-\$200



166.

165.



167. Meissen Style Dress

Cane

Ca. 1880- Porcelain tau handle with a masked lady with floral decoration, colors are bright, small chip to attached gold collar, cherry shaft and a metal ferrule.

H. 5" x 3 1/4", O.L. 33 1/2"

\$800-\$1500



167.

168. Porcelain Dress Cane

Ca. 1935- Porcelain head of a Spanish lady in original condition, bamboo shaft and a metal ferrule.

H. 1 1/2" x 2 1/4", O.L. 29 3/4"

\$250-\$350



168.

169. Staghorn Nude Cane

Ca. 1910- Frontal nude atop the waist, probably a slave representation from a bygone era, silver metal collar, oak shaft and a metal ferrule.

H. 1 1/4" x 4", 37 1/2"

\$400-\$700



170.

170. Shell Dress Cane

Ca. 1930- The handle appears to be molded tortoise shell with very minor wear, sterling silver collar, malacca shaft and a horn ferrule.

H. 4 1/2" x 3 1/2", O.L. 35 1/2"

\$500-\$700



171. Two Gold-Filled Dress Canes

Ca. 1900.-Average length 35"

\$200-\$350



125.

169.



172.

174.



173.



172. Folk-Art Man

Ca. 1915- Carved folk-art man in hat with his hands in pocket, could be a miner, exposed metal above hat, great large naughty leg handle, fully carved front and back, American walnut and a copper ferrule.

H. 6" x 4", O.L. 35"

\$500-\$800

173. Silver Defensive Cane

Ca. 1880- Large ornate silver weighted handle which probably doubles as a billy club, American oak shaft, and a metal ferrule.

H. 1 3/4" x 2 3/4", O.L. 36"

\$250-\$350

174. Carved Dog Cane

Ca. 1940- Probably a hound of sorts, two color glass eyes, silver metal collar, thick ebony shaft, and a horn ferrule.

H. 4" x 3 1/2", O.L. 36"

\$250-\$400

175. Ivory Dress Cane

Ca. 1890- Ivory Nouveau handle with a sterling end cap, signed sterling collar, cherry shaft and no ferrule.

H. 4 1/2" x 1", O.L. 34 1/2"

\$250-\$350

176. Gold Dress Cane

Ca. 1880- Near mint example of a very ornate gold-filled handle. Casting is raised as high as you will ever see, ebony shaft, and a metal ferrule.

H. 4 1/4" x 3", O.L. 36"

\$400-\$600



176.

175.



177. Ivory Dress Cane

Ca. 1850- Ivory knob, coin silver collar, pair of coin silver eyelets, malacca shaft and a metal ferrule.

H. 1 ½" x 2", O.L. 35"

\$200-\$350

178. Alligator Folk Cane

Ca. 1930 – Full length gator watching a deer, metal collar, hardwood shaft and a metal ferrule. O.L. 35"

\$100-\$200

179. Bone Dress Cane

Late 19th Cent- Bone handle with an 1891 Indian Head penny atop, silver collar, faux snakewood shaft and horn ferrule.

H. 1 ¼" x 3", O.L. 36 ½"

\$100-\$200

180. Silver Dress Cane

Ca. 1875- A weighted defensive ornate silver-plated handle with a German presentation, thick ebony shaft and a metal ferrule.

H. 1 ½" x 2 ½", O.L. 35 ½"

\$200-\$300

181. Two staghorn Canes

Ca. 1920- Nice condition, hardwood shafts, and metal ferrule. Average length 35"

\$200-\$300

182. Crooked Folk-Art Cane

Ca. 1820- A rare find in the folk cane world, maybe "the crooked stick that belonged to the crooked man", original patina, pewter hand wrought handle and an iron ferrule.

O.L. 32"

\$500-\$1000



179.



178.



180.



177.



181.



182.

183.



183. Pair of Glass Canes

Ca. 1920- Both solid, one with patriotic ribbons, the other clear/ twisted. Average length 30"

\$250-\$400

184.



184. Rare Mickey Mouse Carnival Cane

This is an early composite Mickey Mouse "like the one that was used in Steamboat Willie", research tells us that the last one of these that was sold at a cane auction was in 1973 from a movie producer's collection in Hollywood and at that time fetched four figures. The paint is 95%, chips to ears, original Mickey Mouse decal on the shaft, "1925- 1930 by Walt Disney"

\$1,000-\$1,500

185. Baseball's Jackie Robinson Cane

Mid -20th Century- A rare example of one of the first pieces of important African American Baseball souvenirs, very fine near mint condition, only a few of these reached the hands of young children when they were made, signed Robinson on the rear by the manufacturer, carnival cane shaft.

\$400-\$600



185.

**186. Football Carnival
Cane**
\$100-\$200

186.



**187. Porcelain Minnie
Mouse Carnival Cane**
\$200-\$300



187.



188.

**188. Minnie Mouse
Porcelain Souvenir Cane**
\$150-\$250

**189. Moon Mullins
Porcelain Carnival Cane**
\$200-\$300

**190. Derby Hat
Porcelain Carnival Cane**
\$100-\$200

**191. Beach Ball
Porcelain Carnival Cane**
\$200-\$300

**192. Flop Eared
Porcelain Dog Carnival
Cane**
\$150-\$200



190.



192.



191.



189.



194.

193.



193. Bull Dog Porcelain
Carnival Cane
\$100-\$150

194. Dancing Chicken
Porcelain Cane
\$100-\$200

195. Crazy Clown Mache
Compo Carnival Cane
\$100-\$200

196. Smiling Dog Porcelain
Carnival Cane
\$100-\$200

197. Sitting Elephant
Porcelain Carnival Cane-
Original tassel
\$100-\$200

198. Mache Dog in Green
Hat Carnival Cane
\$100-\$200

199. Donald Duck
Porcelain Carnival Cane
\$100-\$200



196.



195.



197.



198.



199.

**200. Brown and White
Pony Porcelain Carnival
Cane**
\$100-\$200



**201. Ringmaster Porcelain
Carnival Cane**
\$100-\$200

201.



**202. Cat Porcelain Carnival
Cane**
\$100-\$200

200.



202.

**203. Spanky Porcelain
Carnival Cane**
\$100-\$200

203.



**204. Grandmother
Porcelain Carnival Cane**
\$50-\$100

**205. Sailor Boy Bisque
Carnival Cane**
\$70-\$150

205.

**206. Baseball Porcelain
Carnival Cane**
\$50-\$100



206.



125.



207.



208.



**207. Collection of 5
Porcelain Dog Carnival
Canes**
\$200-\$400

**208. Oliver Hardy Porcelain
Carnival Cane**
\$150-\$300

**209. Stan Laurel Porcelain
Carnival Cane**
\$150-\$300

210.



209.



**210. Collection of 4
Porcelain Dog Carnival
Canes**
\$200-\$400

**211. Elephant Porcelain
Carnival Cane**
\$50-\$100

**212. Elephant Porcelain
Carnival Cane**
\$50-\$100

**213. Elephant Porcelain
Carnival Cane**
\$50-\$100

**214. Elephant Porcelain
Carnival Cane**
\$50-\$100

212.



211.



213.



214.



215. 1939 Worlds Fair Cane

Maple shaft. Original decals, and metal ferrule.
\$100-\$200

216. 1933 Worlds Fair Cane

Maple shaft, pewter metal handle, and a horn ferrule.
\$100-\$200

217. 1936 Worlds Fair Cane

Attached "Century of Progress" medallion, maple shaft and a metal ferrule.
\$100-\$200

218. Group of 12 Carnival Canes

\$300-\$500

219. Group of 12 Carnival Canes

\$150-\$300

220. Group of 13 Carnival Canes

\$150-\$300

221. About 20 Carnival Canes and Shafts

\$100-\$200

218.



219.



220.



221.



215.



217.



216.





222.

222. Meissen Porcelain Cane

Late 19th Century- A mint condition signed Meissen handle which unscrew from the exotic wood shaft, original fine glaze

and a metal ferrule. H.-6"x 3.5"

\$1,200-\$1,800

223. Ivory Mystery Ball Cane

Ca. 1890- An intricately carved Asian handle with balls within balls, probably the best we have seen, exotic wood shaft and a metal ferrule. H. 9" x 1.5"

\$1,200-\$1,800

224. Ivory Cane Handles

Two ivory cane handles

\$250-\$350

223.

224.

225. Wood Alligator Cane Handle
\$100-\$200

226. Cane Stand

Ca. 1880- Holds 36 canes. 36"x 42"x10"
\$300-\$500

227. Cane Stand

Ca. 1880-Divided into four sections, walnut,
holds about 50 canes. 17"x 17"x 39"
\$300-\$500

228. Cane Stand

Ca. 1925- American oak cane stand with six
compartments. Holds about 60-75 canes
.22"x 14"x 25"
\$300-\$500



225.



226.



227.



228.



Kimball M. Sterling, Inc. (TFL-1915)
125 West Market Street
Johnson City, Tennessee 37601
kimballsterling @ earthlink.net
423.928.1471

Photography by James Price

Catalog Design by KT Design, LLC
www.kristaft.com

© Copyright 2014 Kimball M. Sterling, Inc.

www.AuctionAuction.com