



**Kimball M. Sterling, Inc.**

Presents an

# **Antique Cane Auction**

**Saturday, May 24th, 2008**

# Kimball M. Sterling, Inc.

PRESENTS AN

## Antique Cane Auction

Saturday, May 24th, 2008 - 11:00 A.M. E.S.T.

### Preview

Friday, May 23rd - 12:00 p.M. - 5:00 p.m. E.S.T.

Saturday, May 24th - 9:00 A.M. E.S.T.

or by appointment three weeks before the auction

**The auction will be carried  
live on the internet**

Kimball M. Sterling Auction Gallery  
125 West Market Street Johnson City, Tennessee 37601  
kimballsterling @ earthlink.net  
423.928.1471

Member National Auctioneers Association



# TERMS & CONDITIONS

1. Cash, check, MasterCard, or Visa. A 15% buyers' premium will be added to the hammer price as part of the sale price for in-house, phone, and absentee bidders. We reserved the right to hold purchases until the buyers checks clears if buyer is not known by us. Bank letter of credit is acceptable. A 20% buyers fee will be charged to internet bidders.

2. Mail or phone bids are accepted; the firm may require a deposit.

3. Kimball M. Sterling, Inc. has endeavored to catalog and describe the property correctly. All property is sold as is and neither the auction company nor the consignor will be responsible for descriptions, genuineness, provenance or condition of the property. No statement in the catalog made orally at the sale or otherwise shall be deemed to be a warranty, representation, or an assumption of liability.

4. In the event of any dispute between bidders, the auctioneer shall have total discretion to determine the successful bidder, in which his determination shall be final or to re-offer and resale the article in dispute. Title of the item or items purchased by the bidder will pass at the fall of the gavel and declaration of bidder.. This is not an approval auction.

5. Principal auctioneer: Kimball M. Sterling #2467. B. Elizabeth Sterling, auctioneer # 5757. Firm Kimball M Sterling Inc. TFL-1915

6. Bidders may bid live on the Internet by visiting <http://www.auctionauction.com> You may also view the auction at this site and bid by phone.

7. Communications:

Telephone 423-928-1471.

Fax 423-928-2816.

Cellular 423-773-4073, 423-773-4072.

Email [kimballsterling@earthlink.net](mailto:kimballsterling@earthlink.net)

8. Worldwide shipping is available. We encourage you to use United States Mail. Our packing service is free but the buyer must pay postage and insurance fees of their choice.

9. Kimball M. Sterling, Inc. will not be held responsible for bids not received in time for the auction or slow Internet bids. We will not be responsible for items left on our location for over 30 days.

10. Sale will be conducted at 125 West Market Street, Johnson City, Tennessee. 37604. Announcements day of the sale take precedence over pre-sale advertising. Any litigation that pertains to this auction will be conducted in the county of Washington in Tennessee and is agreed upon by registering for this auction.

11. Airport is the Tri-Cities Airport, which is approximately 20 miles from the gallery. Internet catalog and live bidding available at [www.auctionauction.com](http://www.auctionauction.com) Best Western Hotel: 423-282-2126. A very fine hotel which offers Sterling Auction a discount rate is the Carnegie Hotel 1216 W State of Franklin Rd, (423) 979-6400.

12. Please call for condition report on sale lots or email us. We do send out multiple photos by email of any lot in the auction. By registering for this auction you accept the terms and give Kimball M. Sterling auctions the right to charge your credit card on file for purchases and shipping, which you have entered on your registration.

13. Parking service is free.





### 1. Grand Daddy Long Legs Cane Holder

C. 1930-An original cast iron and metal cane holder which has most of the original patina and minor surface rust. The left side of the tail of the waist coat is missing but not noticeable-

36" x 9"

\$200-\$400

### 2. Silver Cat

C. 1920-A fierce cat with two color glass eyes, silver collar, ebony shaft and a bi-metal ferrule-H. 2 3/4" x 2 1/2", O. L. 34" x "

\$300-500

### 3. Ivory Dress

C. 1880-A carved ivory handle with a beaded silver end cap and collar, engraved "Wm. Beverly", signed sterling, natural twig shaft and a bi-metal ferrule-H. 5" x 1 1/2", O. L. 35" x "

\$300-\$500

### 4. Ivory Knob

C. 1800-The handle has inlaid silver in it's top, coin silver collar, silver eyelet's, Malacca shaft and a 5" brass and iron ferrule-H. 1 1/4" x 2", O. L. 34"

\$300-\$500

### 5. Ivory Knob

C. 1800-A nice well aged handle, metal collar, a pair of silver eyelet's, Malacca shaft and a 5 1/2" brass ferrule-H. 1" x 1", O. L. 34" x 1/2"

\$300-\$500





6.

#### 6. Bronze Feline

C. 1930-The handle is signed "L.S.", two color beaded eyes, due to the weight of the handle it is probably a defensive cane, exotic wood shaft and a bi-metal ferrule-H. 4" x 2 1/2", O. L. 35 1/2" x " \$300-\$500



7.

#### 7. Folk Art Lion

C. 1875-A very well carved one piece cane, two color glass eyes, spit in shaft and no ferrule-O. L. 34" x " \$200-\$400



8.

#### 8. Silver and Ivory Dress

C. 1890-This is a very fine Art Nouveau ivory which is overlaid with fine silver, ebonized shaft and a metal ferrule-H. 4 1/2" x 1 1/4", O. L. 34 1/2" \$300-\$500



9.

#### 9. Tortoise and Ivory Shadow

C. 1900-An ivory shadow handle inlaid with a tortoise disc about the size of a quarter, silver collar, Malacca shaft and a horn ferrule \$600-\$900



#### 10. Folk Art Fist

C. 1910-A one-piece carved fist, snake and lizard cane, with a steel ferrule-OL 36" \$300-\$500



10.

**11. Horn Sword Cane**

C. 1880-Horn handle with a few bug holes, four-sided 24" unsigned blade, metal collar, oak shaft and a metal ferrule-H. 2" x 4 1/2", OL. 33 1/2"

**\$400-\$600**



**12. Ivory Glove Holder**

20th Century-A very whimsical crock with green painted ivory eyes, by pushing the lever at the bottom of the jaw the mouth opens and the eyes move, ebony shaft and a bi-metal ferrule-H. 3 1/2" x 2 3/4", O.L. 35 1/4"

**\$1,000-\$1,500**



**13. Erotic Carved Bone**

Mid 20th Century-An erotic carving, silver collar, hardwood shaft and a bone ferrule-H. 3" x 2", O.L. 38"

**\$300-\$500**

**13.**



#### 14. Porcelain Dress

C. 1850-A Dresden porcelain handle in near mint condition, probably a replaced ebony shaft with a very unique brass and iron ferrule-H. 5" x 3", O.L. 36 ½"  
**\$2,000-\$2,500**

#### 15. Solingen Sword Cane

C. 1880-A bamboo sword cane with a 28" signed four sided blade, brass collar and a metal ferrule-H. 5" x 1 ¼", O.L. 34 ½"  
**\$300-\$500**

#### 16. A Folk-Art Whimsy

C. 1920-A one-piece carved folk-art cane with three balls in a cage, and symbols of the Modern Woodmen of America-O.L. 36  
**\$300-\$500**

14.



16.

15.







18.



17.



19.



### 17. Nautical Fist

C. 1860-A carved fist with baton which is inlaid with baleen, a whale bone shaft with three baleen spacers and no ferrule. It does have a bit of a sway-H. 2" x 2", O.L. 37", Diameter of the top of the shaft is  $\frac{3}{4}$ "

**\$2,000-\$4000**

### 18. Folk-Art Gator

C. 1920-A one-piece fully carved cane with four full length gators, original patina and no ferrule-O.L. 33  $\frac{1}{2}$ "

**\$200-\$300**

### 19. Compass System Stick

C. 1900-A carved and turned hardwood shaft which is attached to a handle with a high quality beveled and brass compass, nice original condition and a small brass ferrule-H. 2" x 2", O.L. 36  $\frac{1}{2}$ "

**\$400-\$800**

### 20. Folk-Art Dog

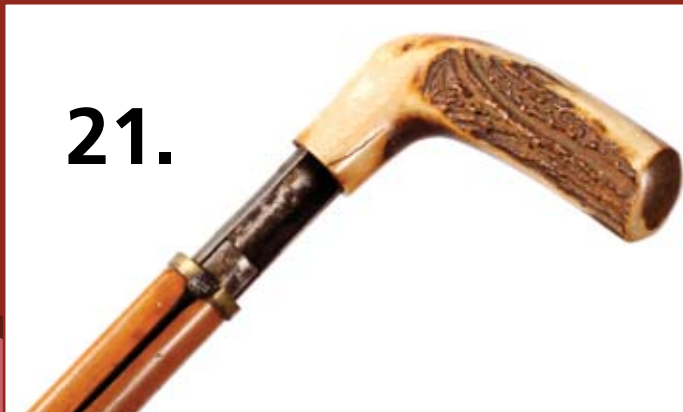
C. 1900-A carved shaft with an Indian and many animals, the handle is a very uniquely carved dog of sorts, and a brass ferrule which has a rubber stopper, H.4  $\frac{3}{4}$ " x 3", O.L. 36"

**\$300-\$500**



20.





**21.**

**21. Belgium Gun Cane**  
C. 1880-Stag handle, brass collar, stepped Malacca shaft and a removable metal ferrule. This shot gun cane appears to be in working condition and there is average splitting in the shaft-H. 4" x 2", O.L. 31"  
**\$1,500-\$2,500**



**22.**

**22. Nautical Crutch**  
C. 1860-The handle alternates ivory and exotic wood, baleen collar and a very nice whale bone shaft. There is some age cracking in the handle and the shaft-H. 4" x 6", O.L. 35"  
**\$1,500-\$2,500**



**23.**

**23. Carved Folk-Art**  
Mid 20th Century-Carved by "F. A. Petty", for Dr. C. E. Yeargin, heavy varnish and some polychrome, no ferrule but a rubber stopper-O.L. 36"  
**\$200-\$300**



**24. Carved Gator**

C. 1930-A typical carved gator with a twig spur shaft with 3 fully carved gators with minor bark loss and a metal ferrule-H. 4 ½" x 2 ½", O.L. 34"

**\$200-\$300**



**24.**

**25. Ivory Flick Stick**

C. 1880-This flick stick has an engraved silver collar inscribed "Lancte, PA", hexagonal cherry shaft and a metal ferrule-H. 1 ¼" x 1 ¼", O.L. 34"

**\$1,000-\$1,500**



**25.**

**26. US Mint Cane**

C. 1902-This is cane number 35 from a series of canes which were made from wood from the U.S. Mint in 1902 when the main Mint was rebuilt in Washington D.C., It has an applied plaque and a two piece metal ferrule-O.L. 34"

**\$300-\$500**

**27. Ivory Squirrel**

C. 1875-Ornate silver collar, missing one of his glass eyes, Malacca shaft and an iron ferrule-H. 1 ½" x 3 ½", O.L. 36"

**\$300-\$600**



**27.**

**26.**



### 28. Ivory Political Cane

C. 1843-This is a presentation cane which is inscribed "The Wig Members of the Legislature to Lewis Bradford Esquire, March 25th, 1843" A wonderful piece of New England history, original silver eyelets with chain, Malacca shaft and a 4" brass ferrule-H. 2" x 1 1/2", O.L. 35"  
**\$1,000-\$1,500**



### 29. French Sword Cane

C. 1880-A Hallmarked silver handle, a four-sided 24" signed French blade, small metal collar and a metal ferrule-H. 1 3/4" 1 1/2", O.L. 34"  
**\$500-\$1,000**



29.



30.

### 30. Carved Folk Art

C. 1870-A carved one piece folk cane with various animals and humans, natural branch shaft and a bi-metal ferrule-O.L. 35"  
**\$600-\$1,200**





### 31. Cased Tiffany and Ivory Dagger

C. 1920-An ivory and signed 14 karat gold Tiffany handle segmented travel cane. The crutch handle is 3 ¾" by 3", and it has a 3 sided engraved 9 ½" blade. The gold handle which is 1 ¼" x 1 ¼" is signed "Tiffany and Co. Makers 6066". The length with the crutch handle is 38" and the O.L. with the gold handle 36". There is some splitting to the ivory shaft but not annoying. It is perfectly fitted to the velvet case.

**\$5,000-\$10,000**

**31.**







**32.**



**33.**



**34.**



**35.**



**36.**

### 32. Ivory Dress

C. 1900-An ivory dress with a signed sterling collar, pair of ivory eyelets with lanyard, ebonized shaft and a horn ferrule-H. 1 ½" x 2", O.L. 34" \$300-\$500

### 33. Carved Dog

C. 1930-A one piece carved dog with gigantic two color glass eyes, minor damage to ears and a bi-metal ferrule-O.L. 35" \$200-\$400

### 34. Anglo Indian Ivory

C. 1890-An ornately carved handle which is attached to an ebony shaft with numerous inlays of ivory, the center of the shaft has a swirl pattern and it has a horn ferrule-H. 1" x 1 ¼", O.L. 33 ¼" \$400-\$600

### 35. Ivory Flowers

C. 1890-An ornate carved basket of different types of flowers, gold over silver collar which is signed but unreadable, exotic wood shaft and a horn ferrule-H. 2" x 2", O.L. 34 ½" \$500-\$1,000

### 36. Cabinet Makers Cane

C. 1885-It is extremely hard to find one of these canes that still contains all of the original tools. The handle holds 12 tools which include, auger, chisel, screw driver blade etc., near mint Malacca shaft and a brass ferrule. A cane very similar to this which is numbered 25/1 appears in "Cane Curiosa, from Gun to Gadget", by Katherine Dyke-O.L. 35" \$800-\$1,200

### 37. Tippler's Stick

Late 19th Century-This is an original in all aspects, often referred to as the "Toulouse Lautrec Cane", wood handle doubles as a drinking glass and it has a horn ferrule-H. 1 1/2" x 2 3/4", O.L. 33 1/2"

**\$400-\$600**



### 38. Art Nouveau Ivory

C. 1890-A finely carved handle, gold collar, exotic wood shaft and an ivory ferrule-H. 4" x 1 3/4", O.L. 35"

**\$500-\$700**



### 39. Ivory Talon Dress

C. 1880-Very finely carved handle which is holding what appears to be an egg, metal collar, briarwood shaft and a brass ferrule-H. 4" x 3/4", O.L. 33 1/2"

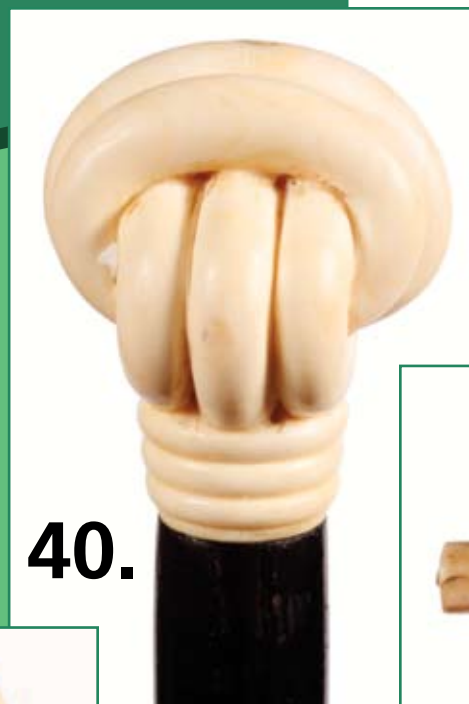
**\$400-\$600**



### 40. Nautical Ivory

Late 19th Century-A carved "Monkey Knot Handle," ebonized hardwood shaft and an ivory ferrule-H. 1 1/2" x 2", O.L. 35 1/4"

**\$500-\$700**



### 41. Nautical Ivory Fist

Late 19th Century-A classic carved ivory fist and baton, stepped faux bamboo hardwood shaft and a bi-metal ferrule-H. 1 3/4" x 1 1/2", O.L. 35"

**\$400-\$800**



**42. Nautical Whaling Stick**

C. 1870-A 4" x 1 1/2" whale's tooth which is capped in silver, ornate hallmarked silver collar marked sterling, Malacca shaft and a bi-metal ferrule-O.L. 38"  
**\$600-\$900**

**43. French Porcelain Dress**

C. 1875-This porcelain handle has silver overlay and a medallion which is a hand painted picture of cupid with bow and arrow, silver collar, small Malacca shaft and a broken horn ferrule-H. 2" x 1", O.L. 32 1/4"  
**\$300-\$500**

**44. Porcelain Dress**

Mid 19th Century-A hand painted porcelain handle, gold collar, rosewood shaft and an ivory ferrule-H. 2 1/2" x 3/4", O.L. 35 1/2"  
**\$500-\$600**

**45. French Art Glass**

C. 1880-A diminutive glass handle with painted decorations, two ornate brass collars, faux bamboo partridge wood shaft and a brass ferrule-H. 3 1/4" x 1", O.L. 35 1/2"  
**\$200-\$300**







46.

47.



**46. Gorham Sterling  
Vinaigrette**

Late 19th Century-A very finely cast silver handle for this genre of canes, signed sterling collar, ebony shaft and a ivory ferrule- H 1" x 3 1/4", O.L. 37"  
**\$600-\$900**

**47. Tout's System Stick**

C. 1885- A sterling silver knob which unscrews to reveal a sterling pencil probably used by some horse race aficionado, Malacca shaft, bi-metal ferrule. H -2"x 1 1/2", O.L. 36"  
**\$400-\$600**

**48. Ivory Scarab**

C. 1920-A large walrus ivory handle with a carved scarab on it's top, massive Malacca shaft and a large ivory ferrule-H. 1 3/4" x 2 3/4", O.L. 34 1/2"  
**\$500-\$800**

48.



49.



**49. Carved Ivory Dress**

C. 1900-A carved ivory head with two color glass eyes, braided leather collar, honey Malacca shaft and horn ferrule- H. 2 1/2" x 2", O.L. 32 1/4"  
**\$500-\$700**



### 50. Nautical Whalebone

C. 1860-Sailor made fully carved architectural shaft with a baleen spacer and a whale's tooth handle with a tortoise inlay, this prime example of sailor's work is in very fine original condition with holes drilled at one point for a lanyard and original patina-H. 2" x 1 1/4", O.L. 34 1/2" \$4,000-\$6,000

50.



**51. African American Lady**  
 C. 1870-A finely carved head with two color glass eyes, metal collar, carved from taunga nut, Malacca shaft and no ferrule-  
 H. 2" x 1 1/2", O.L. 35"  
**\$400-\$500**

**52. Damascene Dress**  
 C. 1890-Fine damascene work, ebonized shaft and a brass ferrule-H. 3" x 1", O.L. 36"  
**\$400-\$600**

**53. African American Folk**  
 C. 1880-Carved head with bulging two color glass eyes, ornate gold filled collar, hardwood shaft and small brass ferrule-H. 1 3/4" x 2 3/4", O.L. 35"  
**\$300-\$500**

**54. Silver and Ivory**  
 C. 1885-A large piece of ivory which is overlaid with ornate silver work, signed sterling collar exotic wood shaft and bi-metal ferrule-H. 4" x 1 1/4", O.L. 33"  
**\$600-\$800**

**55. Double Pierce Carved Ivory**  
 C. 1885-This handle is a double carving within the handle itself, the balance of the carved gentleman may be seen through the carved holes, hallmarked silver collar, hardwood shaft and a bi-metal ferrule-H. 4 1/2" x 1", O.L. 36"  
**\$700-\$900**



**56. European Ivory**

C. 1885-A large ivory handle, signed sterling collar, applied gold monogrammed initials, exotic wood shaft and a 2" bone ferrule-H. 4 ½" x 2", O.L. 34 ½"

**\$1,500-\$2,500**



**56.**

**57. Troy Valve Cane**

C. 1900-A very unique product presentation cane from the Ross Valve Company in Troy New York, fungus hardwood shaft and no ferrule-H. 3" x 1 ½", O.L. 34"

**\$500-\$700**



**57.**

**58. Flick Stick**

C. 1860-This is a very early twig spur flick stick which is capped at the top, engraved with the letter C and other small ornate items, very simple but yet very elegant, and a bi-metal ferrule-O.L. 36" (no locking mechanism and never had one)

**\$600-\$900**



**58.**

**59. Art Nouveau Dress**

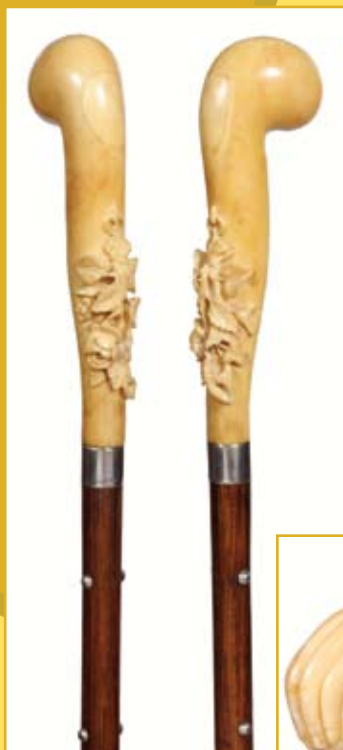
C. 1890-A unique example of this period which is signed sterling and has unreadable maker's marks, it is very rare to find the eagle and the human incorporated this way in an Art Nouveau handle. It has an ebony shaft and a bi-metal ferrule-H. 4 ½" x 3", O.L. 35 ½"

**\$600-\$900**



**59.**





**60.**



**61.**



**62.**

**60. Carved Floral Ivory**

C. 1875-Signed sterling collar, hardwood shaft and metal ferrule-H. 5" x 1 3/4", O.L. 37"  
\$500-\$600

**61. Nautical Ivory**

C. 1865-A whale tooth handle carved in a shape of a stylized eagle with baleen eyes, baleen and ivory spacers, snakewood shaft and a horn ferrule-H. 3 1/2" x 2", O.L. 37"  
\$1,200-\$1,800

**62. Carved Ivory Hand**

C. 1890-Finely carved hand and ball, silver collar, ebony shaft and a copper ferrule-H. 3 7/8" x 1 1/2", O.L. 34 1/2"  
\$500-\$700

**63. Nautical Ivory Fist**

C. 1880-A carved ivory hand with a fluted sleeve collar and ball, oak shaft, nautical lanyard and no ferrule-H. 1 1/2" x 1 1/4", O.L. 35"  
\$300-\$600

**64. Rose Quartz Dress**

C. 1910-Rich rose quartz handle, gold filled collar, ebonized shaft and a horn ferrule-H. 1" x 1 1/4", O.L. 36"  
\$300-\$500

**65. Hard Stone Agate**

C. 1900-An earth tone agate handle, silver collar, oak shaft and never had a ferrule-H. 2 1/4" x 1 1/2", O.L. 33 1/2"  
\$300-\$500

**66. Japanese Ivory**

C. 1880-A carved ivory gentleman with inked head, small silver collar, faux bamboo partridge wood shaft and a bimetal ferrule-H. 1 1/2" x 1", O.L. 33 1/2"  
\$300-\$500



**63.**

**64.**

**65.**

**66.**





**68.**



**67.**



**69.**

### **67. Japanese Chmise**

C. 1870-The ivory handle has 3 expertly carved baboons representing hear no evil, speak no evil and see no evil. It is signed by the artist in a red cartouch and a single butterfly adorns the handle. Approximately 25% of the exotic wood shaft is carved with Japanese homes, scholars, ghesha girls and it has a brass ferrule. The handle has average ivory striations-H. 4 ½" x 2 ½", O.L. 32"  
**\$800-\$1,200**

### **68. Double Carved Pierced Asian Ivory**

C. 1880-A peacock is visible within the carving of the handle, signed sterling collar, ebony shaft and a bi-metal ferrule-H. 4 ½" x ¾"-O.L. 35 ¾"  
**\$700-\$900**

### **69. Ivory Egyptian**

C. 1920-A precisely carved ivory head with green stone eyes, silver and a cabochon emerald adorn the snake headdress, silver collar, hardwood shaft and a metal ferrule-H. 2 ½" x 1 ¾"-O.L. 37"  
**\$800-\$1,200**

**70. Ivory Flower Garden Cane**

C. 1875-The handle has numerous flowers including roses and daises carved throughout, a signed sterling collar, snakewood shaft and a metal ferrule-H. 6" x 1", O.L. 35"

**\$500-\$700**

**71. Carved Horn**

C. 1875-Possibly rhino, engraved gold collar, two color glass eyes, rich bamboo shaft and bi-metal ferrule-H. 5" x 2 1/4", O.L. 34 1/4"

**\$800-\$1,200**

**72. African American Lady**

C. 1875-Probably the best cane of this type that we have seen, two color realistic glass eyes, ivory teeth, copper collar, ebonized shaft and a metal ferrule-H. 2 1/2" x 2 1/4", O.L. 33 1/2"

**\$600-\$800**

**73. Ivory Dress Stick**

C. 1900-A large medallion done in high relief of what appears to be the letter S, sterling collar, mahogany shaft and a bi-metal ferrule-H. 5 1/2" x 3", O.L. 34 1/2"

**\$500-\$600**



**74. Ivory Lion**

C. 1880-A two-piece ivory handle, two color glass eyes, silver collar, ebony shaft and a brass ferrule-H. 4 ½" x 2", O.L. 35"  
**\$500-\$700**



**75. Inuit Ivory Fox**

C. 1910-A nicely carved native walrus tusk, signed sterling collar, faux bamboo shaft and a bi-metal ferrule-H. 5" x 1 ½"-O.L. 34 ½"  
**\$600-\$800**



**76. Asian Ivory**

C. 1910-A semi nude Asian lady playing with her puppy, metal collar, ebonized shaft and a bi-metal ferrule-H. 5" x 2", O.L. 36"  
**\$800-\$1,200**



**77. Ivory Nude**

C. 1890-This handle was done by a master's hand with much detail, hallmarked "W.H", silver collar, exotic wood shaft and a brass ferrule-H. 5" x 1 ½", O.L. 36"  
**\$1,400-\$1,800**







**78.**



**79.**



**80.**



**78. Civil War Presentation**

C. 1892-The shaft is signed "Wood from Gettysburg" and dated 1892, the bone handle has an inked presentation to "Dr. Jos. Brewer, 1892", a cane with this type handle is most unusual and with more research by it's buyer could prove to be very rare-H. 5" x 3 1/2", O.L. 37"

**\$1,000-\$1,500**

**79. Native American**

C. 1920-A finely carved natural crutch, probably Seminole with carving of various items and an ink and dyed gator-O.L. 36"

**\$300-\$500**

**80. Nautical Whimsy**

C. 1875-The handle is a carved tooth done in the style of a spring and spiral with wood inlays, baleen spacer, whale bone shaft with about 2" of spiral carving and no ferrule-H. 4" x 1 1/2", O.L. 33 1/2"

**\$2,000-3,000**



81.



82.

### 81. Porcelain Dress

C. 1880-Hand painted Dutch girl, signed sterling collar, hardwood shaft and a horn ferrule-H. 1 ¼" x 1 ¼", O.L. 34"  
\$300-\$400

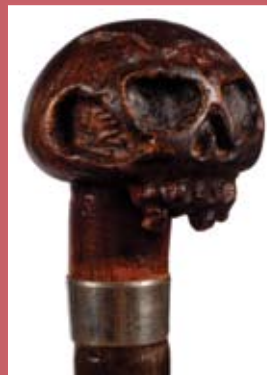
### 82. Carved Horn Hoof

C. 1875-Carved yellow horn hoof, ornate silver metal collar, Malacca shaft and a copper ferrule-H. 4 ½" x 1 ½", O.L. 36"  
\$300-\$500

85.



83.



### 83. Skull Folk-Art

C. 1920-A very grotesque carved skull, a signed silver plate collar, a grape vine shaft, and an iron ferrule-H. 2" x 2", O.L. 31 ¼"  
\$250-\$300

### 84. Ivory and Silver

C. 1880-Ornate silver is overlaid on a carved ivory handle, solid silver ornate collar, exotic wood shaft and no ferrule-H. 4 ½" x 1 ½", O.L. 32 ¾"  
\$500-\$600

### 85. Massive Stained Carving

C. 1875-This handle has seven large elks carved in high relief, a fluted silver collar, a massive and stout bamboo shaft and an original bi-metal ferrule, the stained handle is in better than average condition with a few small ivory cracks and striations within the animals, this is the prime example of this work that we have ever seen-H 4 ½" x 2", O.L. 34 ½"  
\$1,500-\$2,000



84.

**86. Ivory and Gold  
Presentation**

C. 1875-Carved ivory handle with some sort of insect, ornate gold filled end caps and collar, exotic wood shaft and a most unusual  $3\frac{3}{4}$ " brass and iron ferrule-H. 5" x  $1\frac{1}{2}$ ", O.L.  $35\frac{3}{4}$ "  
**\$500-\$800**



**87. Ivory Lobster**

C. 1890-A carved lobster with glass eyes which retains some of its original staining, ornate gold filled collar, hardwood shaft and a bi-metal ferrule-H. 4" x  $1\frac{1}{4}$ ", O.L. 34"  
**\$500-\$1,000**



**88. Advertising Cane**

C. 1900-A one piece natural grown shaft has a presentation plaque which says "Compliments of Niles Tool Works, it has various silver attachments and a bi-metal ferrule-O.L.  $35\frac{1}{2}$ "  
**\$150-\$250**



**89. Horn Dress**

C. 1900-Signed sterling collar, faux tortoise decoration on a hardwood shaft. O.L. 35"  
**\$200-\$300**

**90. Silver Cat**

Late 20th Century-A custom signed sterling cane from the shop of Charles Daugherty, exotic wood shaft and bi-metal ferrule-H. 3" x 3", O.L. 36"  
**\$600-\$900**





**91. African Ebony**

C. 1960-A one piece carved head and twisted shaft done in ebony-O.L. 36"

**\$200-\$250**



**92. Art Nouveau Ivory**

C. 1890-The handle has a bell bronze dragon fly attached, top of the cane has an inset carving of an Art Nouveau lady, bell bronze collar, exotic wood shaft and a small ivory ferrule-H. 2 3/4" x 1 1/4", O.L. 34 1/2"

**\$500-\$800**



**93. Parade System Stick**

C. 1940-This stick has a metal shaft, wood knob handle and the flag within the shaft appears to have never been used-O.L. 36"

**\$300-\$500**



**94. Ivory Dogs**

C. 1900-Three dogs with two color glass eyes, ornate silver collar, ebony shaft and a bi-metal ferrule-H 2" x 2", O.L. 36"

**\$500-\$1,000**



**95. Nast Style Eagle**

C. 1910-A silver-plated stylized eagle head with wear, exotic wood shaft and a bone ferrule-H. 4" x 2 1/2", O.L. 37"

**\$300-\$500**





**96.**



**97.**

**96. Silver Overlay**

C. 1880-Silver over stag, signed sterling collar, Malacca shaft, and bi-metal ferrule-H. 5" x 2", O.L. 36"  
\$400-\$600

**97. Ivory Leg**

C. 1900-Scalloped leggings, brass collar, rich mahogany shaft and a bone ferrule-H. 4 1/2" x 2", O.L. 36 1/2"  
\$400-\$600



**99.**

**98. Carved Bone**

C. 1900-Beaded brass collar, exotic hardwood shaft and horn ferrule-H. 4 1/2" x 1", O.L. 36"  
\$300-\$500

**100.**

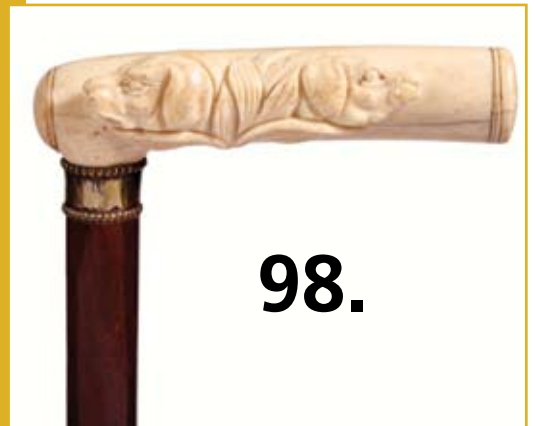


**99. Sword System Stick**

C. 1890-Bamboo handle and shaft, 28" unsigned two sided blade, woven leather collar and a bi-metal ferrule-O.L. 37"  
\$400-\$600

**100. Ivory Nude**

C. 1890-A very fine carving of an ivory nude standing in front of a large group of palm leaves, signed sterling collar, partridge wood shaft and a 3" bi-metal ferrule-H. 4" x 15/16", O.L. 35 3/4"  
\$1,500-\$2,500



**98.**



101.

### 101. Ebony Cat

C. 1920-A fully carved ebony cat with two color glass eyes, signed sterling beaded collar, ebony shaft and a bi-metal ferrule-H. 3" x 2", O.L. 36"

**\$800-\$1,200**

### 102. Ivory Insects

C. 1920-Carved ivory handle which appears to have a roach on one side chasing a lady bug on the other side, three ring gold-filled collar, exotic wood shaft and a bi-metal ferrule-H. 3 3/4" x 1 3/4"-O.L. 35"

**\$400-\$600**

### 103. Briar Carved Dog

C. 1925-A pair of two color glass eyes, mother of pearl button, silver collar, Malacca shaft and a horn ferrule-H. 4" x 2", O.L. 36"

**\$300-\$500**



102.

### 104. European Ivory

Dated 1897-A nice massive piece of ivory with sterling end caps which have minor damage, Christmas 1897 Presentation, horn collar, massive snakewood shaft and a horn ferrule-H. 5" x 1 3/4", O.L. 36"

**\$500-\$1,000**

103.



104.



**105. Gold Dress**

C. 1910-A signed and numbered Simmons rolled gold filled handle, ebony shaft and a metal ferrule-H. 1 ¼ x 1 ¾", O.L. 36"  
**\$250-\$500**

**106. Gold Dress**

C. 1890-A very ornate gold filled handle in near mint condition, an ebony shaft and a bi-metal ferrule-H. 2 ½" x 1 ¾", O.L. 36 ½"  
**\$250-\$500**

**107. Gold Presentation**

Dated 1885-This heavy gold filled handle is very ornate and has a presentation engraved on the top, made by RDS and Co., ebony shaft and bi-metal ferrule-H. 2 ¼" x 1 ¼", O.L. 36"  
**\$250-\$500**

**108. Silver Dress**

C. 1840-An ornate silver handle with minor wear, large Malacca shaft and a brass ferrule-H. 1 ½" x 1 ¼", O.L. 32 ¼"  
**\$300-\$500**

**109. Presidential Presentation**

C. 1900-A presentation to "W. E. Dodge from President Roberts, Liberia", ebonized shaft and a metal ferrule-H. 1 ¼" x 1 ½", O.L. 34 ½"  
**\$300-\$500**

**110. Silver and Ivory**

C. 1880-A two piece handle signed sterling, Malacca shaft and a horn ferrule-H. 4 ½" x 1 ½", O.L. 35 ¼"  
**\$300-\$500**



**111. Gold Crook**

C. 1935-Large 14K gold end cap and spacer over a one piece exotic wood shaft and a 3" horn ferrule, some minor dents and dings in the gold-H. 4 ½" x 3 ½", O.L. 36  
**\$300-600**

**112. Silver Serpent**

C. 1880-Hallmarked but unreadable, two color glass eyes, some minor damage where handle attaches to the split bamboo shaft, and bi-metal ferrule-H. 3 ½" x 3", O.L. 34 ½"  
**\$300-\$600**

**113. Bone Walrus**

C. 1880-Hallmarked silver collar, bamboo shaft and a bi-metal ferrule-H. 2 ¾" x 1", O.L. 35"  
**\$200-\$300**

**114. Stag Gorilla**

C. 1865-Done in a master's hand, signed sterling collar, pair of sterling eyelet's, twig spur shaft and no ferrule-H. 3"x 3", O.L. 36"  
**\$400-\$800**

**115. Carved Fiddler**

An early carved European cane handle which is signed "FHC" which must have been removed from an earlier cane and placed on this shaft due to the RAF and military insignias which have been attached-H. 6 ½" x 2", O.L. 33"  
**\$200-\$400**





116.

117.



#### 116. Carved Folk

C. 1920-A primitive carved folk cane with lizards-snakes-foliage, damage to some of the animals and a metal ferrule-O.L. 33"

**\$400-\$500**

#### 117. Carved Folk

C. 1940-Very nicely carved and painted bathing beauty, signed "Interierung Lulerbach 1940", hardwood shaft, spike hiking ferrule-O.L. 37"

**\$200-\$300**

#### 118. Carved Folk

C. 1930-This cane has high relief ducks, cats and kittens, seals, otter, gators, turtles, snakes and frogs plus a little mouse at the end, no ferrule and some damage throughout the cane, it is also signed by "Martin Carman"-O.L. 33"

**\$300-\$400**



118.



120.

119.



#### 119. Taylor Compass Cane

C. 1935-The handle has a working Taylor of Rochester compass inlaid into an unusual piece of burl which has a crack, well preserved exotic shaft, and 2" horn ferrule-H. 1 3/4" x 1 3/4", O.L. 34 1/2"

**\$300-\$500**

#### 120. Primitive Folk

C. 1930-An oak shaft with minor splitting and primitive figures carved throughout, bone ferrule-O.L. 33"

**\$150-\$250**







121.



122.



123.



124.

### 121. Folk-Art Man

C. 1920-A carved one piece burl stick, two color glass eyes and a metal ferrule-O.L. 33"

**\$150-\$250**

### 122. Masonic & Skeleton Cane

C.1900-Rare cane in that the first carving looks like Lincoln, the Masons symbol, and then two skeletons. This is unique. There is also a gator carved on backside, Maltese cross & a cup, a thick cane, crook handle, bi-metal ferrule -O.L. 36 1/2"

**\$500-\$1000**

### 123. American Cheroot

C. 1880-Bell bronze handle, rich ebony shaft and a brass and iron ferrule, these canes were actually loaded and lit by cigars at different parades and events, they were always a big hit on the Fourth of July-H. 3 1/2" x 2 3/4", O.L. 32 3/4"

**\$600-\$800**

### 124. "Blackwells" Canine Cane

C. 1920-This system stick has both a latch for a dog leash and a dog whistle, exotic wood shaft, and bi-metal ferrule. It is marked "Blackwell" and also patent, a cane of this type appears in "Cane Curiosa, from Gun to Gadget", by Catherine Dyke" on page 20-H. 3 1/2" x 3 1/4", O.L. 35 1/4"

**\$600-\$900**

**125. Celluloid Jockey**

Late 19th Century-Celluloid was used as a replacement for ivory as early as 1860, gold plated collar, ebonized shaft and a horn ferrule-H. 4 ½" x 1 ½", O.L. 37"

**\$200-\$400**



**125.**

**126. French Porcelain**

C. 1875-A hand painted tau handle, gold collar, ebony shaft and an ivory ferrule-H. 3 ½" x 2 ¼", O.L. 36"

**\$500-\$800**

**126.**



**127.**



**127. French Porcelain**

C. 1875-Nicely paint decorated porcelain, small gold collar, rich snakewood shaft and a brass and iron ferrule-H. 3 ½" x 2 ¼", O.L. 36"

**\$500-\$800**

**128. Rhino Horn Crutch**

C. 1875-Ornate gold filled collar, partridge wood shaft and a bi-metal ferrule-H. 4" x 4", O.L. 37"

**\$600-\$900**

**129. Silver-plate Dress**

C. 1890-Coiled snake collar, ebonized shaft and a horn ferrule-H. 4 ½" x 1 ¼", O.L. 35"

**\$200-\$400**

**130. Dog Sword**

C. 1910-The handle is marked 950 silver, two sided 17" blade, ebony shaft and a silver ferrule-H 4" x 2 ½", O.L. 36"

**\$500-\$1,000**



**129.**



**128.**



**130.**

**131. Tortoise Crook**

C. 1890-Solid tortoise handle, gold collar, ebonized shaft and a bi-metal ferrule-H. 8" x 3 1/2", O.L. 36"

**\$500-\$1,000**

**132. Niello Silver**

C. 1880-Rich rosewood shaft and a horn ferrule-H. 2" x 3/4", O.L. 34 1/2"

**\$250-\$350**

**133. Silver Frog**

C. 1900-British hallmarked, two color red glass eyes, ebonized shaft and a bi-metal ferrule-H. 1 3/4" x 3 1/4", O.L. 36"

**\$300-\$500**

**134. Chryscoll Sphere**

C. 1910-Signed sterling collar, ebony shaft and a horn ferrule-H. 1 3/4" x 1 3/4", O.L. 36"

**\$300-\$500**







**135.**

**136.**

**137.**



**135. Perfume Cane**

C. 1925-"LeKid" perfume atomizer by Marcel Frank, complete in working condition, ebony shaft and a brass ferrule-H. 3 ¾" x ¾", O.L. 36"  
\$400-\$600

**136. Nautical Cane**

C. 1875-A carved whale tooth in the form of an eagle, silver collar, whale bone shaft and a bi-metal ferrule-H. 4 ¼" x 1 ¼", O.L. 34"  
\$800-\$1,200

**137. Nautical Ivory**

C. 1875-Nicely carved fist holding a baton with a fluted cuff which has minor damage on the under side, rosewood spacer, whalebone shaft, and no ferrule-H. 2" x 1 ½", O.L. 30 ½"  
\$1,000-\$1,500



**137.**



**136.**



**138.**

**138. Ivory Bear**

C. 1885-Black beaded eyes, gold collar, snakewood shaft, and an ivory ferrule-H. 3 1/2" x 1 3/4", O.L. 36"

**\$600-\$1,000**

**139. Nautical Cane**

C. 1880-Whimsical nautical folk carving with inlay on the hexagonal hardwood shaft, and a bi-metal ferrule-H. 3 3/8" x 1 5/8", O.L. 36 3/4"

**\$400-\$800**

**140. Ivory Flick Stick**

C. 1880-Locking 3 1/2" mechanism blade, minor repaired striations in ivory, ebonized shaft and a bi-metal ferrule-H. 2 1/2" x 1 1/8", O.L. 34 1/2"

**\$800-\$1,200**

**141. Gold Tortoise**

C. 1880-Rose gold handle, full tortoise shaft with some minor repair, and a brass ferrule-H. 1 1/4" x 1 1/4", O.L. 33 1/4"

**\$1,000-\$1,500**



**139.**



**141.**



**140.**



**142. Massive Ivory**

C. 1890-Carved pistol grip with some silver overlay within the carving, silver collar, large Malacca shaft and a 2" horn ferrule-H. 9 ½" x 2", O.L. 36 ½"  
**\$500-\$1,000**



**142.**

**143. Dog Measuring Cane**

C. 1920-The handle has a spaniel with a glass eye, a tape measure pulls from the handle and automatically rewinds, ebonized shaft and a brass ferrule-H. 1 ¼" x 1 ½", O.L. 36"  
**\$500-\$800**

**144. Trophy Cane**

C. 1900-Warthog tusk handle, gembok horn shaft and a small composition ferrule-H. 5 ¼" x 5 ¼", O.L. 35 ¼"  
**\$400-\$800**

**145. French "Le Redoubtable"**

Mid 19th Century-A nice example of this French defensive cane with a coin silver handle, silver collar, Malacca shaft and an iron ferrule, this cane is in fine working condition-H. 1 ¼" x ½", O.L. 36 ¾"  
**\$2,500-\$3,500**



**145.**



**143.**



**144.**



**146. Ivory Flick**

C. 1875- Ivory handle with locking flick blade, working condition, Malacca shaft, and original ferrule- H. 1 ½ " x 1 ½" O.L 36"

**\$800-\$1000**

**147. Large Stag Horn**

C. 1875-A well crystallized stag horn carved handle of a huntsman, congo wood shaft and a spike ferrule-H. 6" x 2 ½", O.L. 34 ¼"

**\$500-\$700**

**148. Figural Vine Cane**

C. 1870-A naturally grown one piece cane which depicts a French bull dog head, pair of glass eyes and a metal ferrule- H. 2 ½" x 2", O.L. 36 ¼"

**\$400-\$700**

**149. Carved Ivory**

C. 1875-A carved ivory panel showing four birds on one side and a branch on the other, full bark Malacca shaft and a stag ferrule-H. 4" x 3 ¼", O.L. 34 ½"

**\$600-\$1,000**



**146.**



**147.**



**148.**



**149.**





**150.**

**150. Ivory Skull**

C. 1860-A very macabre English cane, full bark Malacca shaft, possibly Masonic in origin and a horn ferrule-H. 4" x 2", O.L. 36 ¾"  
\$2,000-\$3,000

**151. American Folk-Art**

C. 1860-Fully carved shaft, crook handle ending in a 3" wild animals head, adorned by many other animals, and an iron and bronze spike ferrule-O.L. 35 ½"  
\$400-\$800

**151.**



152.



154.

**152. Dieppe Ivory Dress**  
C. 1870-Gold Collar, rich rosewood shaft and a horn ferrule-H. 5 ½" x 7/8", O.L. 36 ½" \$400-\$600

**153. Austrian Silver**  
C. 1890-The handle is chased and engraved with angels and flowers, Austro-Hungarian hallmarks on the collar, ebony shaft and a bronze ferrule-H 3 ½" x 3", O.L. 35 ½" \$500-\$1,000

**154. Silver Knob**  
Dated 1880-Full London hallmarks, rosewood shaft and a horn ferrule-H. 3 ½", O.L. 36" \$300-\$500



153.



**155. Ivory Dog Dress**

C. 1885-Pair of glass eyes, sharp teeth, exotic ebony shaft and a horn ferrule-H. 2 ¼" x 2", O.L. 36 ¾"  
**\$500-\$1,000**



**155.**

**156. Ivory Cats**

C. 1895-A large carved handle with three cats and an owl, Malacca shaft, and a metal ferrule-H. 4" x 1 ½", O.L. 37 ½"  
**\$1,200-\$1,800**



**156.**

**157. Hippo Ivory Dogs**

Dated 1893-Hallmarked British collar, ebony shaft and a bronze ferrule-H. 5 ¾" x 1 ¾", O.L. 36 ¼"  
**\$700-\$1,500**



**157.**

**158. Ivory Hands On Dress**

C. 1870-Done in a masters hand, Malacca shaft and a metal ferrule-H. 4" x 2 1/4", O.L. 36 3/4"

**\$1,500-\$2,500**

**159. Mythical German Ivory**

C. 1875-Carved panel of Diana the Huntress and three other Baroque allegorical figures, Malacca shaft, silver collar and a metal ferrule-H. 6 1/2" x 1 1/2", O.L. 37 3/4"

**\$1,500-\$2,500**

**160. Ivory Fox**

C. 1870-A nicely carved handle, pepperwood shaft, metal collar and a brass ferrule-H. 5" x 1 3/4", O.L. 35 1/2"

**\$800-\$1,200**





### 161. Ivory Dog

C. 1880-Two color glass eyes, rich snake wood shaft, silver collar and a horn ferrule-H. 2  $\frac{3}{4}$ " x 2", O.L. 38"  
\$800-\$1,200

### 162. English Sword

C. 1790-Fancy coin silver handle, Malacca shaft which is covered with a woven textile, 24" steel blade with a blood groove on each side, partial gold gilt still visible, coin silver collar and a bronze ferrule-H. 1" x 1", O.L. 33"  
\$600-\$1,200

### 163. Ivory Fox

C. 1865-A carved fox in battle with a snake, fancy carved attached belt buckle collar, ebony shaft and an ivory ferrule-H. 2  $\frac{1}{2}$ " x 2  $\frac{1}{2}$ ", O.L. 37"  
\$600-\$1,000







**164.**



**165.**

**164. Carved Ivory Dog**

C. 1870-A large pistol grip handle, rosewood shaft and a brass ferrule-H. 6" x 2", O.L. 37 ¾" \$400-\$600

**165. Shaman Folk Art**

C. 1870-A one piece carved oak shaft mostly covered in snake skin, (some loss) and brass shot gun ferrule-O.L. 36 ¼" \$400-\$600

**166. Chinese Export**

C. 1870-A silver-plated handle which is highly decorated with dragons, ebony shaft and a horn ferrule-H. 5" x 2 ½", O.L. 36 ¾" \$400-\$600



**166.**

**167. European Ivory Crook**

C. 1870-Two hugging monkeys at the tip of the handle and also a group of monkeys playing in the lower part of the handle, rich ebony shaft and an ivory ferrule-H. 4 ½" x 3", O.L. 36 ½" \$1,000-\$1,500



**167.**

**168. Carved Ivory Eagle**

C. 1880-Large ivory eagle, silver collar with London hallmarks, Malacca shaft and a bi-metal ferrule-H. 4" x 1 3/4", O.L. 37 1/2"  
**\$1,000-\$1,500**

**169. Ivory Dress**

C. 1840-Carved ivory handle with four portrait panels, ivory collar, original silk tassel, Malacca shaft and a 2 1/2" bone ferrule-H. 2" x 1 1/4", O.L. 32 1/2"  
**\$500-\$1,000**

**170. Sword Stick**

C. 1885-Hardwood branch shaft, four sided 26" blade still showing minor etching with locking mechanism, brass collar and a bi-metal ferrule-H. 4" x 4 1/2", O.L. 34 1/2"  
**\$500-\$700**



**171. Rock Crystal Dress**

C. 1920-A faceted rock crystal handle with a natural smoky tint, hallmarked sterling collar, rich snake wood shaft and a bi-metal ferrule-H. 1 ½" x 1 ½", O.L. 37 ¾"  
**\$400-\$700**

**171.****172. Silver Dress**

C. 1890-German hallmarked silver handle, ebony shaft and a horn ferrule-H. 3 ½" x 2 ½", O.L. 36"  
**\$400-\$600**

**172.****173. Shibayama Bone Handle**

Meiji Period-Inlaid tortoise bird, coral lady bug, and other distinctive inlays, Malacca shaft and a copper ferrule-H. 5" x 1 ¼", O.L. 34 ¾"  
**\$600-\$900**

**174. Bronze Fist**

C. 1850-A well cast bronze handle which is heavy for defensive purposes, Malacca shaft and a bi-metal ferrule-H. 2" x 1 ¼", O.L. 33 ½"  
**\$300-\$500**

**174.****173.**



**175.**



**176.**



**175. Hard Stone Dress**

C. 1910-Brownish-red carnelian stone, faceted rock crystal decoration applied, faceted rock crystal collar, rosewood shaft and a 2 ½" horn ferrule-  
H. 3" x 1", O.L. 36"  
**\$500-\$1,000**

**176. Carved Ivory Mallard**

C. 1900-A well carved duck with collar, two color glass eyes, ring size ivory collar, honey Malacca shaft and an ivory ferrule-  
H. 4" x 2 ½", O.L. 37"  
**\$1,000-\$1,500**

**177. Agate Dress**

C. 1930-A colorful agate ball, turquoise collar, exotic wood shaft and a bi-metal ferrule-H.  
1 ¾" x 1 ¾", 38 ½"  
**\$300-\$400**

**178. Erotic Ivory Crook**

C. 1895-Nicely carved crook handle, Roman key style silver collar, Malacca shaft and a bi-metal ferrule-H. 4" x 3",  
O.L. 35 ¼"  
**\$1,000-\$1,500**

**178.**



**177.**





**179.**



**181.**

### **179. Agate Dress**

C. 1920-Nephrite knob, a signed American sterling collar, rosewood shaft and a bronze ferrule-H. 1 ½" x 1 ½"-

O.L. 38 ½"

**\$300-\$400**

### **180. Ivory Puzzle Cane**

C. 1880-A very nicely carved ivory handle which has a moveable ivory ball within the largest creatures mouth, hallmarked British collar, Malacca shaft and a 3 ½" stag horn ferrule-H. 5" x 1 ½",

O.L. 36"

**\$600-\$1,200**



**180.**

### **181. Continental Folk Cane**

C. 1910-A one piece twig spur shaft, "strange bird" with two color glass eyes and a metal ferrule-O.L. 35"

**\$250-\$350**

### **182. Carved Dog**

C. 1930-A carved dog with two color glass eyes, silver gilt chain with charm, fruitwood shaft, gold gilt collar and a horn ferrule-H. 3" x 2", O.L. 36"

**\$200-\$400**



**182.**

**183. Ivory Cat**

C. 1880-A very nicely carved cat, Malacca shaft, wire woven wrapped collar and a 3 1/2" bronze and metal ferrule-H. 3 3/4" x 1 3/4", O.L. 33 3/4"  
**\$1,500-\$2,000**



**184. Carved Folk**

C. 1930's-A one piece hardwood carved shaft, drilled eyelet holes, wrapped fabric collar and a horn ferrule-O.L. 35 1/4"  
**\$200-\$300**



**185. Patriotic Glass**

C. 1890-A very unusual paper weight style handle with both lace and red, white and blue ribbon, metal collar, ebony shaft and a bi-metal ferrule-H. 1 1/2" x 1 3/4", O.L. 35 3/4"  
**\$300-\$500**



**186.**





**187. Silver Decorated Dress**

C. 1880-Delicate and dense silver wire inlay, holly wood shaft and handle, small ivory inserts on the handle, probably Russian in origin and no ferrule-H. 5" x 1 ¼", O.L. 36 ½"  
**\$400-\$600**

**188. Carved Fist Folk Art**

C. 1870-1900-A one piece carved cane with fist for handle, some geometric carvings and polychrome coloring. In the square part of the shaft there is also carved a diamond, heart, spade, clubs, insignias. Possibly Civil War or gambling related. Hardwood shaft-O.L. 34"  
**\$300-\$500**

**189. Cigarette Cane**

Dated 1916-A large silver container cane with room for a days ration of cigarettes, military related, German hallmark and maker sign, stepped partridge wood shaft and a horn ferrule-H. 4" x 3", O.L. 31"  
**\$500-\$800**



**187.**

**188.**



**189.**





**190.**

**190. Ivory Bear**

C. 1875-The handle is carved one half on one side of the handle and one quarter on the other, probably English, ornate silver collar, Malacca shaft and a metal ferrule-H. 5" x 1 1/2", O.L. 34 1/2"

**\$700-\$1,000**



**191.**

**191. French Porcelain**

C. 1885-Probably by Jacob Petit Works, gold filled collar, ebony shaft and a 2" horn ferrule-H. 3" x 2", O.L. 35 1/2"

**\$300-\$500**



**192.**

**192. European Dagger**

C. 1860-Hallmarked but unreadable silver handle, bamboo shaft, locking mechanism, four sided 12 1/2" plain dagger and a metal ferrule-H. 1 1/2" x 1", O.L. 35"

**\$600-\$1,000**



**193.**

**193. Anglo-Indian Ivory**

Late 19th Century-Two piece ivory handle, partridge wood shaft and a metal ferrule-H. 2 3/4" x 4", O.L. 36"

**\$300-\$400**

194.



196.

**194. American Dress**

C. 1890-Art Nouveau silver plated handle, rosewood shaft and a horn ferrule-  
H. 1 ¼" x 3 ¼", O.L. 35"  
**\$200-\$250**

**195. Carved Stone Dog**

C. 1895-Carved red jasper with natural dark spots, silver plated collar with applied rooster head, two color glass eyes, probably French, exotic wood shaft and a metal ferrule-  
H. 3" x 2 ½", O.L. 37 ½"  
**\$1,500-\$2,500**

**196. Continental Folk**

C. 1890-A one piece carved branch, painted and beaded eyes and a metal ferrule-  
O.L. 33 ½"  
**\$250-\$350**



195.



**197. Japanese Ivory Export**

C. 1885-A signed and nicely done "1000 Faces", ornate silver collar, exotic wood shaft and a horn ferrule-H. 4" x 1 1/4", O.L. 36"

**\$600-\$1,200**

**198. Carved Ivory Dress**

C. 1900-Appears to be French, silver collar, ebony shaft and a brass ferrule-H. 1 3/4" x 1 3/4", O.L. 37 1/2"

**\$500-\$800**

**199. Ivory and Silver Dress**

C. 1880-Silver over ivory handle, ebony shaft and a horn ferrule-H. 4" x 1 3/4", O.L. 36 3/4"

**\$400-\$600**

**200. Folk Art Staff**

C. 1880-A one piece carved Eastern European folk art cane which has animals and scrolls done in the taste of the Middle Ages and a iron ferrule-O.L. 40 1/4"

**\$500-\$800**



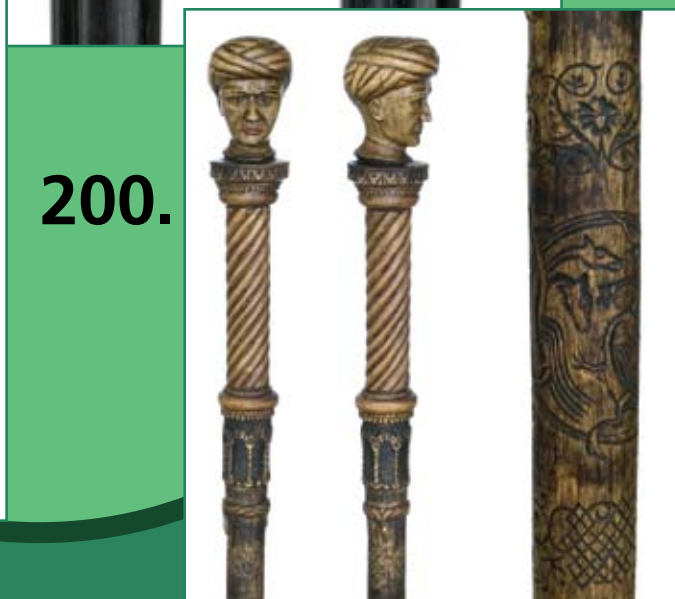
**197.**



**198.**



**199.**



**200.**



**201. Ivory Dress**

C. 1875-A well carved ivory dog, ornate ivory collar, Malacca shaft and a bone ferrule-H. 3 ¾" x 3", O.L. 35 ½"  
**\$400-\$600**



**201.**

**202. French Porcelain**

C. 1900-Painted porcelain knob, rosewood shaft, gold gilt collar and a horn ferrule-H. 1 ½" x 1 ½", O.L. 37"  
**\$300-\$400**



**202.**

**203. Ivory Crook**

C. 1900-An ivory handle done in the style of reptile scales, woven wire decoration, small ivory collar, Malacca shaft and a stag ferrule-H. 4 ½" x 3 ½", O.L. 36 ½"  
**\$500-\$1,000**



**203.**

**204. Ivory Dog**

C. 1850-A fierce carved ivory dog with silver mounts which is attached to a large ivory spindle, silver collar, Malacca shaft and a 2 ½" ivory ferrule-H. 5 ½" x 5", O.L. 33 ¼"  
**\$1,000-\$1,500**



**204.**

**205.**



**205. Cigarette System Stick**  
C. 1915-Carved ivory handle that unscrews and exposes a 3 ½" horn and natural stone cigarette holder, a rich ebony shaft and an ivory ferrule-H. 4 ½" x 1", O.L. 35 ¼"  
**\$700-\$1,200**

**206.**



**206. Forty Five Parasol Handles**  
C. 1910-1925-A collection of 2" wide assorted handles in carnelian, sardonyx, agates and moon stone.  
**\$300-\$500**

**207. Holuska Watch Cane**  
C. Late 19th Century-A very nice working example of this genre, a very finely chased silver handle and silver medallion, rich Malacca shaft and a bi-metal ferrule-H. 1 ½" x 1", O.L. 35"  
**\$2,000-\$3,000**



**207.**





**208.**



### 208. Ivory Dress

Dated 1873-Inlaid horn disc with silver scroll work, gold filled collar, exotic wood shaft and a partial metal ferrule-H. 2 ½" x 1 ½", O.L. 35 ½"  
\$500-\$1,000

### 209. Carved Ivory

C. 1875-Beaded brass collar, ebonized shaft and a horn ferrule-H. 6" x 1 ½", O.L. 36"  
\$500-\$1,000

### 210. Silver Skull

C. 1900-Hallmarked but unreadable, hardwood shaft and a horn ferrule-H. 4" x 2 ½", O.L. 34 ½"  
\$300-\$500

### 211. Pipe System Stick

C. 1900-Silver cap and silver collar, twig spur shaft, and a 2" brass ferrule. This cane has had a professional repair which is invisible-H. 3" x 1 ½", O.L. 35"  
\$300-\$500

**210.**



**211.**



**209.**



**212. Cork Folk Art**

C. 1880-An unusual burl handle, cork shaft and a brass ferrule-H. 6" x 4 1/2", O.L. 35 1/2"  
**\$300-\$500**

**213. Carved Folk**

C. 1910-A one piece carved oak branch with folk carvings-O.L. 35 1/2"  
**\$400-\$600**

**214. Folk Art Umbrella**

C. 1910-A one piece carved oak shaft done in the form of an umbrella and a bullet shaped 2" brass ferrule-O.L. 34"  
**\$200-\$300**

**215. Folk Art Ugly Man**

C. 1885-Ornate silver collar, Malacca shaft and an iron ferrule-H. 3 1/2" x 2 1/2", O.L. 34 3/4"  
**\$200-\$400**

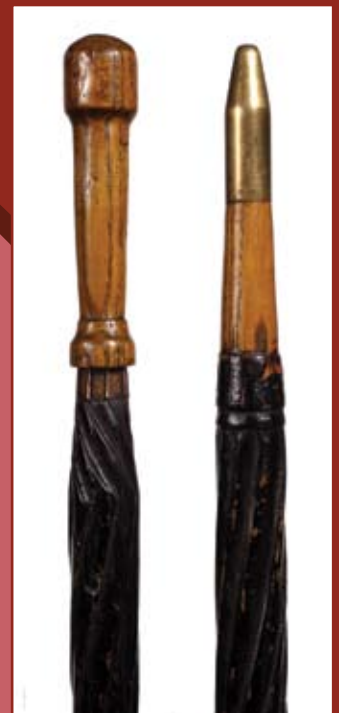
**216. Carved Folk Art**

C. 1890-A carved and decorated one piece cane with original patina-O.L. 32"  
**\$200-\$400**



**212.**

**214.**



**216.**



**215.**

**213.**



**217. Mexican Folk Art**

C. 1930-A typical carving of this genre with no ferrule-O.L. 36"  
**\$100-\$200**

**218. Folk Art Man**

C. 1910-A whimsical folk art head attached to a twig spur shaft and no ferrule-O.L. 32"  
**\$200-\$400**

**219. Natural Folk Art**

C. 1920-A one piece naturally grown shaft where the maker has carved various animals and faces on the burls, and a brass ferrule-O.L. 33 1/2"  
**\$200-\$400**

**220. Ivory Cat**

C. 1900-A wonderful thick carving of a standing cat with two color glass eyes, average ivory striations, ivory collar, very rich snakewood shaft and an ivory ferrule-H. 1 1/2" x 3 1/4", O.L. 36"  
**\$2,000-\$2,500**

**217.**



**219.**



**218.**



**220.**





**221.**



**221. Silver Dog**

C. 1920-A very fine casting of a dog with a toothache, unsigned .900 silver, ebonized shaft and a metal ferrule-H. 2 3/4" x 1 1/4", O.L. 34"  
**\$500-\$1,000**

**222.**



**222. Unusual Sword**

C. 1850-A signed extensively 24" blade with acid etching, wood collar, faux bamboo hardwood shaft and a 3 1/2" spike brass ferrule-H. 6" x 1 1/4", O.L. 34"  
**\$600-\$1,000**

**223. Horn Sword**

C. 1880-Brass overlaid horn egg shaped handle, ribbed brass collar, 29" unsigned four-sided blade, bamboo shaft and a brass ferrule-H. 1 1/2" x 2", O.L. 36"  
**\$500-\$1,000**



**224. Silver Foo Dog**

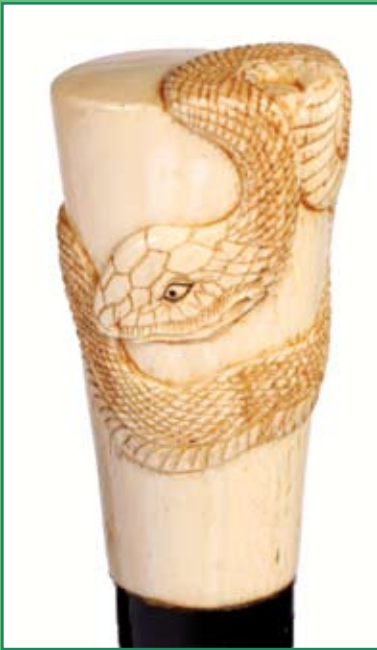
C. 1880-Finely done silver work with the name E. Flash, "Broadway NYC", rich mahogany shaft and a bi-metal ferrule-H 3 3/4" x 1 3/4", O.L. 37"  
**\$500-\$700**

**224.**



**223.**





**225.**

**225. Japanese Ivory**

C. 1880-Relief carving of snake, ebonized shaft and a brass ferrule-H. 2 ¼" x 1 ¼", O.L. 35 ¼"  
\$400-\$600



**228.**

**226. Ivory Dress**

C. 1865-A well carved L handle with minor ivory striations, Malacca shaft and a 2 ½" bone ferrule-H. 7 ½" x 3 ½", O.L. 33 ½"  
\$300-\$500

**227. Carved Ivory**

C. 1880-A two piece handle with inscriptions, silver collar, ebonized shaft and a metal ferrule-H. 3" x 5", O.L. 36"  
\$400-\$500

**228. Horn Sword**

C. 1870-Stout horn handle, carved wood collar, four sided 22" blade which is signed "Coulaux and Co.-Klingenthal", faux bamboo shaft and a brass ferrule-H. 3" x 2 ¾", O.L. 34 ½"  
\$600-\$1,200



**227.**



**226.**



**229. Fine Folk Art**

C. 1900-This one piece carved cane has 90% of it's original paint, very busy carving with very minor damage to some of the animals, metal ferrule-O.L. 35 1/4"

**\$800-\$1,200**

**230. Carved Cat**

C. 1920-A one piece carved folk cane which has minor damage to one ear, a paw print carved into the shaft, beaded glass eyes and a copper collar at it's end-H. 4" x 5", O.L. 38"

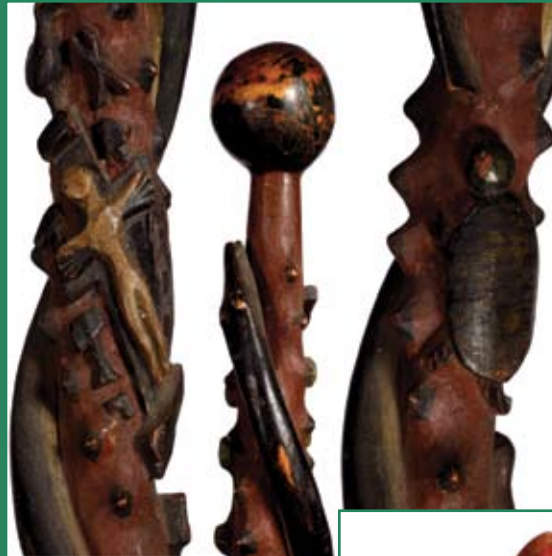
**\$300-\$500**

**231. Spanish Vera Style Cane**

C. 1800-A masterpiece of this genre with the smiling sun hand engraved on the top and a holy cross on its side, there are 15 engraved silver rings throughout the hardwood shaft and a silver 2" ferrule-H. 4" x 2 1/2"-O.L. 40"

**\$1,000-\$2,000**

**229.**



**230.**



**231.**





**232. Folk Art Foot**

C. 1900-A one piece carved folk art, brass ferrule-H. 3 1/2" x 1 1/2"-O.L. 33 1/2"  
**\$200-\$300**



**233. Candle System Stick**

C. 1860-A very unique cane which has a rich bamboo shaft and no ferrule, by unscrewing the silver-plate brass handle the candle is spring loaded and pops up ready to be lit-H. 1" x 1 1/4", O.L. 35 3/4"  
**\$500-\$1,000**



**234. Carved Folk Art**

C. 1880-A large carved folk art head which is part of a one piece twig spur shaft and a small horn ferrule-H 2 1/2" x 2 1/2"-O.L. 34 1/2"  
**\$200-\$400**

**235. Inked and Etched Folk Art**

C. 1860-A wonderful and whimsical folk art cane with a snake etched the full length and a formidable crocodile, various trees carved throughout the cane and a bi-metal ferrule-O.L. 34"  
**\$500-\$1,000**





**236.**

**237.**



**236. Folk Art Man**

C. 1900-A one piece carved head with two color glass eyes, twig spur shaft which two of the spurs have been carved into human faces and a brass ferrule-H. 1 ¾" x 2 ¼", O.L. 35 ½"  
\$200-\$300

**237. Folk Art Snake**

C. 1910-A paint decorated snake circles the entire shaft, applied mushroom handle and a metal ferrule-O.L. 35"  
\$300-\$400



**238.**

**238. Folk Art Foot**

C. 1920-A two piece cane with a twig spur shaft, and a small brass ferrule-H. 3" x 2", O.L. 31"  
\$200-\$250



**239.**



**239. Folk Art Snake**

C. 1910-A one piece carved snake with most of it's original green paint, and a brass ferrule-O.L. 35"  
\$300-\$500

**240. Folk Art Burl**

C. 1880-A one piece carved primitive man, twig spur shaft and no ferrule-H. 3 ½" x 2", O.L. 30"  
\$200-\$300



**240.**



241.



242.



#### 241. Folk Art Animal

C. 1880-A one piece carved cane with an animal holding a coat of arms, and a brass ferrule-O.L. 3 ¾"

\$200-\$300

#### 242. Horn Sword

C. 1870-Hallmarked ornate silver collar, 24" unsigned four sided blade, Malacca shaft and a brass ferrule-H. 5" x 1 ½", O.L. 36"

\$800-\$1,200

#### 243. Masonic Presentation

C. 1880-Ornate silver handle, brass presentation plaque which has never been engraved, various botanical carvings, Masonic compass, hearts-stars-handshakes and more, bi-metal ferrule-H. 1 ½" x 1", O.L. 36"

\$800-\$1,200

#### 244. System Stick

C. 1860-Nice unusual example of this genre with engraved handles and collars, oak shaft and a brass ferrule-H. 1 ½" x 1", O.L. 37"

\$400-\$600



243.



244.





**245. A Folk Art Snake**

C. 1890-Beaded glass eyes,  
natural grown crooked shaft  
and no ferrule-O.L. 36"

**\$200-\$400**

**246. Folk Art Cane**

C. 1900-Diamond Willow shaft  
with applied handle, iron  
hiking ferrule-O.L. 35 ¾"

**\$100-\$200**

**247. Hearing Trumpet  
System Stick**

C. 1890-A very rare early  
hearing device with a horn  
handle, silver collar, split  
bamboo shaft, large horn  
ferrule which attaches to the  
ear trumpet, a very rare and  
sought after example of this  
type of cane-H. 3 ¾" x 2",  
O.L. 35"

**\$2,000-\$3,000**

**245.**



**246.**



**247.**



### 248. La Diabolique

C. 1890-This cane is one of the three French defensive canes which were outlawed shortly after they went into production. The protruding blades appear by simply pulling the shaft and the razor sharp blades disappear by tapping the cane on the ground. This example is a rare one due to the embellishments of a silver handle with raised maple leaves and an attached shield with the "all seeing eye" symbol engraved upon it, ebonized shaft, excellent condition with a brass and metal ferrule-H. 4  $\frac{3}{4}$ " x 4", O.L. 35  $\frac{1}{2}$

\$6,500-\$7,500



## 248.



# 249.



## 249. Memento Mori Stag

C. 1880-A beautiful and delicate carving of a half skull and half flesh of a long haired man, he is in a long button tunic with a polychromed cord with six glass beads inlaid as buttons. The handle which is the rear of the hat is 4" long. It has a cut steel ¼" collar that resembles gem stones, ebony shaft and a horn ferrule-H. 5 ¾" x 3 ¾", O.L. 35 ½"  
\$2,000-\$2,200

## 250. French "Morian" Quad foil

C. 1865-A signed 19 ½" blade in near mint condition by G. Morian, 36 Ave de L" Opera, Paris. A 1 ½" steel sphere handle acts as an additional weapon or maybe even a door knocker, gold filled collar, locking blade, bamboo shaft with minor splits and an original bi-metal ferrule-H. 1 ½" x 1 ¾", O.L. 34"  
\$2,000-\$2,200



# 250.





**251.**

**251. Erotic Asian Dildo**

C. 1880-A carved 4" elephant tusk with a 3 1/2" pewter collar of various animals and reptiles- bugs-dragons, a very masterful carving on the front but by turning the cane to the rear it is simply an ivory penis, by unscrewing the handle from the Malacca shaft a reservoir is exposed where a lubricant could be and is still contained, the length of the device itself is 7 1/2" and the width is an 1 1/4", excellent condition, from a French collection and an original bi-metal ferrule- O.L. 36"

**\$2,500-\$3,500**

**252. Henrik Bertram Moller Masterpiece**

Dated 1910- A wonderful grostique .830 silver handle from this world famous Trondheim,Denmark silversmith. He was the "Best of the Best", stepped hardwood shaft,signed by the artist,and a brass ferrule.H-3 1/2" x 3", O.L.-35 1/2"

**\$2,000-\$2,500**



**252.**

**253. Art Nouveau Dress**

C. 1890-Sterling handle by R .  
F. S. and Co. of New York City,  
mahogany shaft and a bi-metal  
ferrule-H. 3" x 1 ½", O.L. 30 ½"  
**\$250-\$400**



**253.**

**254. Porcelain Juicer**

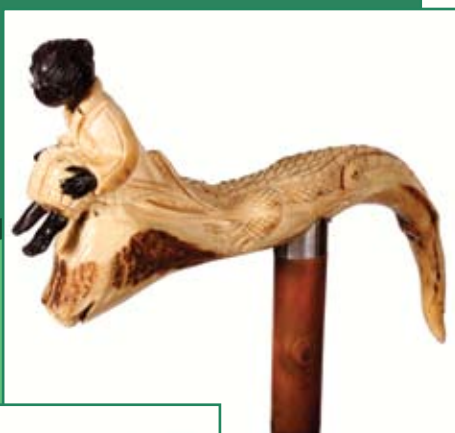
C. 1930-Porcelain handle  
used in the South for juicing  
oranges, gold filled collar, oak  
shaft and a bi-metal ferrule-H.  
2" x 2", O.L. 33 ¾"  
**\$300-\$400**



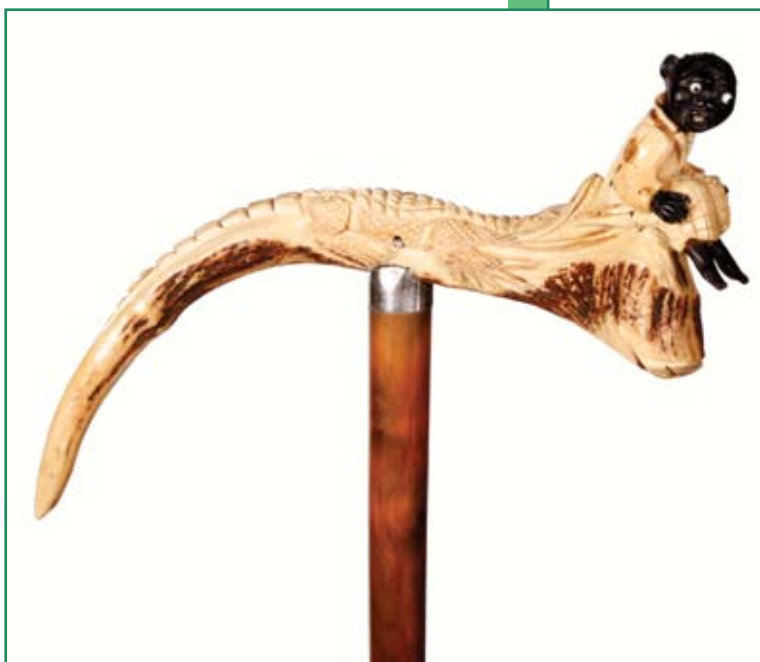
**254.**

**255. Jacksonville Style Stag**

C. 1890-Canes of this style are  
rarely seen in this size handle,  
a pair of two color glass eyes,  
silver collar with silver mounts,  
orange wood shaft and a bi-  
metal ferrule, from the tip of  
the head to the opposite tip of  
the handle it is 9 ½" and the  
height is 3"-O.L. 36"  
**\$1,500-\$2,500**



**255.**



**256. Ivory Vinaigrette**

C. 1875-Vermeil floral opening end cap, top unscrews to reveal a cotton patch to which perfume was added, ebonized shaft and an ivory ferrule-H. 1 ¼" x 1 ¼", O.L. 34 ¼"  
**\$500-\$700**



**256.**

**257. Carved Ivory**

C. 1875-A very rare carved ivory handle probably German, small ivory collar, rich Malacca shaft and an ivory ferrule-H. 6" x 2", O.L. 34"  
**\$3,000-\$5,000**

**257.**





**258.**



**258. Carved Ivory**

C. 1880-An unusually carved two piece handle, ornate silver collar, pair of silver eyelets with a corn ear and bug for a tassel, exotic wood shaft and a bi-metal ferrule-H. 5" x 1 1/2", O.L. 36"

**\$1,000-\$1,500**

**259. Nautical Ivory**

C. 1865-A stylized carved bird with scrimshaw work attached to a bone shaft which has small dots of baleen within its collar-H. 4 1/4" x 2", O.L. 37"

**\$2,000-\$3,000**

**259.**





260.

**260. Nobleman's Brode` and Pique**

C. 1780-A fabulous piece of early artistry, the major portion of the handle is tortoise shell, rose gold is done throughout the handle with scrolls and brode` work. There are various engraved mother of pearl symbols inlaid throughout the handle and a rose gold disc inlaid into the top of the cane, ornate rose gold collar, massive Malacca shaft and a brass ferrule-H. 1  $\frac{3}{4}$ " x 1  $\frac{3}{4}$ ", O.L. 33"

**\$3,000-\$5,000**



**261. Hard Stone Feline**

C. 1870-We believe the handle, which is hard stone but has a lapis appearance is a Roman artifact which could be 2,000 years old, probably shafted in the late 19th Century in Europe, silver wire collar, expertly done faux bamboo hardwood shaft which has been lacquered and a metal ferrule-H. 2" x 2", O.L. 36" \$3,000-\$5,000

**262. Carved African**

Early 20th Century-Carved rosewood head with a pair of ear rings, metal collar, hardwood shaft and a metal ferrule-H. 3" x 2", O.L. 36" \$150-\$250

**263. Ivory Water Fowl**

C. 1920?-Two color glass eyes, hallmarked British collar, ebonized shaft and a metal ferrule.

\$1,000-\$1,200

261.



263.



262.





**264. Ivory Dog**

C. 1875-A large carved ivory handle, glass eye, silver collar, ebonized shaft and a horn ferrule-H. 4 ½" x 1 ¾", O.L. 36"  
**\$800-\$1,200**



**264.**

**265. Ivory Frog**

C. 1910-A full figured frog, two color glass eyes, silver collar, stepped bamboo shaft and a 2 ½" horn ferrule-H. 2 ½" x 1 ¾", O.L. 35 ½"  
**\$800-\$1,200**



**266. Ivory Cat**

C. 1915-Ivory cat with long whiskers, two color glass eyes, metal collar, ebonized shaft and a horn ferrule-H. 2" x 1 ¾", O.L. 35 ½"  
**\$1,000-\$1,500**



**265.**

**266.**



**267.**



**267. Ivory Frog**

C. 1920-A large ivory frog with one glass eye and one lazy eye, exotic wood shaft and a bi-metal ferrule-H. 3" x 1 3/4", O.L. 35 1/2"

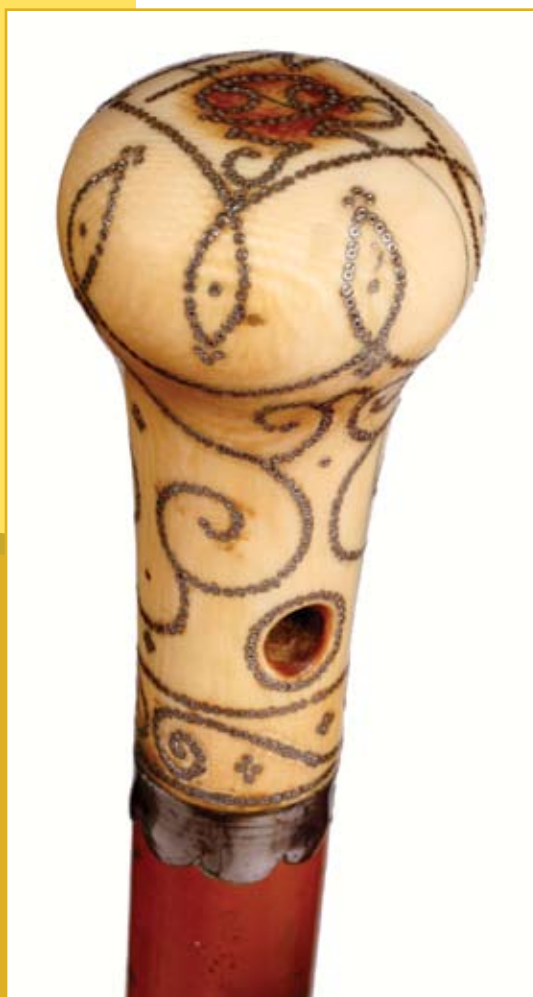
**\$1,000-\$1,500**

**268. Ivory Pique**

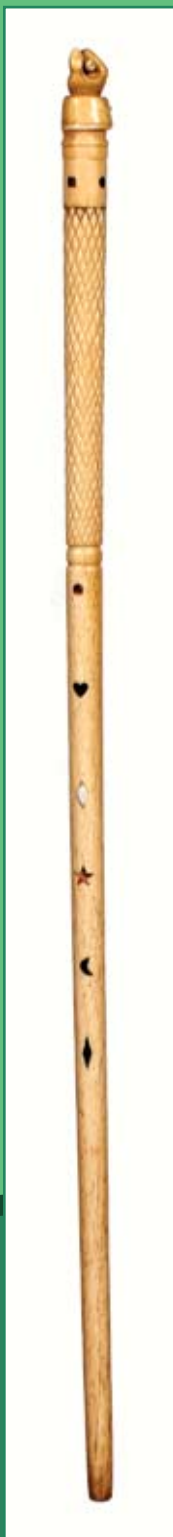
Dated 1692-A very nice example of this genre of canes which is dated and also has the initials "N.J." in pique work, lanyard eyelets surrounded by silver, inverted crown coin silver collar, Malacca shaft and a 2 1/2" bi-metal ferrule-H. 3" x 1 3/4", O.L. 36"

**\$3,000-\$4,000**

**268.**



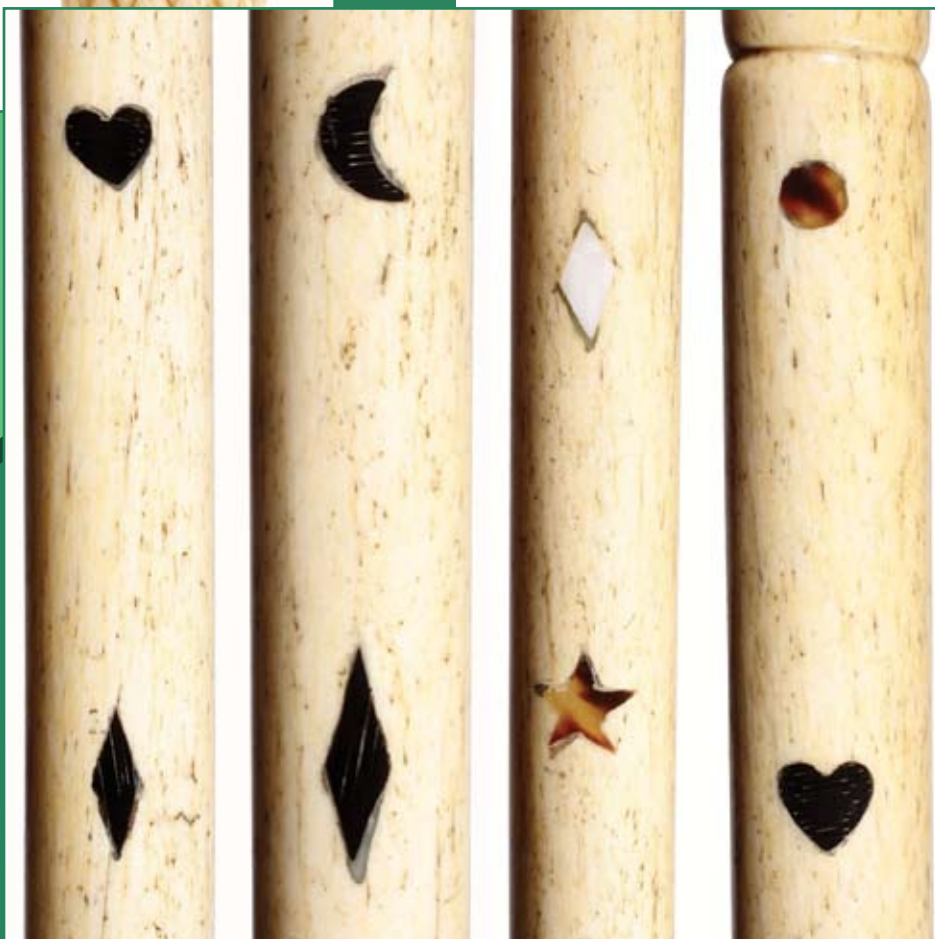
269.



### 269. Nautical Folk Art

C. 1860-A very nicely carved hand and baton with bone and shell inlays in the cuff, one third cross hatched carved shaft with twenty two natural folk art inlays from various sea animals including baleen-mother of pearl-tortoise , the diameter of the top of the shaft is a little more than one inch-H. 2" x 1 1/2", O.L. 35 1/4"

**\$5,000-\$10,000**





**270. Texas Folk Art**

C. 1930-Carved by "Tail Wind" as a presentation to an early Texas Dr., cane has cowboys on a horse and steers, applied handle and metal ferrule-O.L. 34 1/2"

**\$200-\$300**

**271. Carved Childs Head**

C. 1900-A two piece cane, bamboo shaft and no ferrule-H. 2 1/2" x 1 1/2", O.L. 33 1/2"

**\$500-\$600**

**272. Paperweight Presentation**

Dated 1922-Corporate seal of "Rising Sun and Co" attached to the top, hardwood shaft and no ferrule-H. 2 1/4" x 1 1/2", O.L. 33 1/2"

**\$200-\$400**

**273. Odd fellows Folk Art**

C. 1890-A one piece carved and painted lodge cane and no ferrule-O.L. 33"

**\$300-\$400**

**273.**



**270.**



**271.**



**272.**



**274. Mineral Collection**

Various Dates-A group of four mineral canes with assorted shafts and ferrules-  
Average length 35"  
\$900-\$1,200

**275. Ivory Aviator**

C. 1900-Signed sterling collar, ebony shaft and a bi-metal ferrule-H. 3 1/2" x 1 3/4"-O.L. 36"  
\$1,000-\$1,500

**276. Ivory Dog**

C. 1890-Two color glass eyes, pewter collar, twig spur shaft and a metal ferrule-H. 2 1/4" x 1 1/2", O.L. 34"  
\$700-\$900



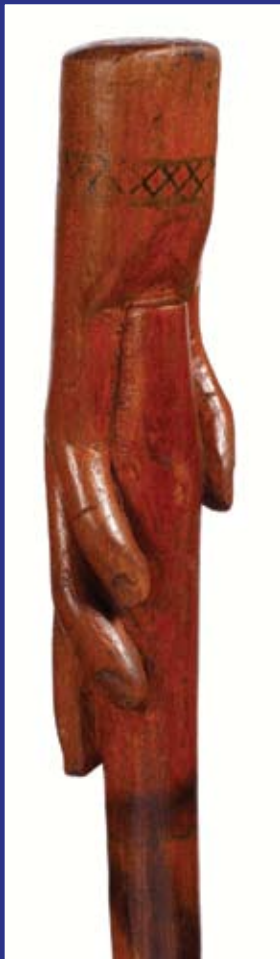
**275.**



**276.**



**277.**



**278.**



**277. Folk Art Hand**

C. 1900-One piece carved hand with some paint decoration and a shotgun shell ferrule-O.L. 33"

**\$300-\$400**

**278. African American Ivory**

C. 1890-Silver collar, ebonized shaft and a bi-metal ferrule-H. 1 1/4" x 1 1/2", O.L. 34 1/4"

**\$600-\$800**

**279. Folk Art Snake**

C. 1925-A one piece carved and painted snake cane and no ferrule-O.L. 36"

**\$250-\$350**

**280. Carved Bird**

C. 1880-A carved briar bird with a lizard in his mouth, gold collar, bamboo shaft and no ferrule-H. 3 1/2" x 3 1/2", O.L. 34 1/2"

**\$350-\$550**

**279.**



**280.**







**282.**

**281. Ivory Dog**

C. 1875-Ornate gold filled butt plate, two color glass eyes, engraved ornate gold filled collar, ebony shaft and a silver ferrule-H. 5" x 1 1/4", O.L. 35"  
\$600-\$900

**282. Burl and Silver**

Dated 1797-A very unique and hand chased handle, inverted kings crown collar, silver eyelets which have a dated sash ring, warped hardwood shaft and a 3" iron and metal ferrule-H. 1 1/4" x 3", O.L. 42"  
\$1,400-\$1,800

**283. Ivory Monkey**

C. 1920-A fully carved reclining monkey, signed sterling collar, ebony shaft and a metal ferrule-H. 4" x 1 1/4", O.L. 34 1/2"  
\$600-\$1,000



**281.**



**283.**

**284. Ivory Horse**

C. 1880-Carved ivory horse with two color glass eyes, silver bridal with rosettes, signed sterling collar, faux bamboo exotic wood shaft and a bi-metal ferrule-H. 4" x 1 1/2", O.L. 35

**\$1,200-\$1,600**

**285. Ivory Monkey**

C. 1890-Probably Japanese, attached cabochon rubies with gold leaves, 14k end caps and collar, Philadelphia presentation from the "Union League", hardwood shaft and a horn ferrule-H. 4" x 1 1/4", O.L. 33 3/4"

**\$1,000-\$1,500**

**286. Silver Dress**

C. 1890-A very unusual Nouveau handle done in the Japanese style, ivory collar, hexagonal hardwood shaft and a brass ferrule-H. 3 1/4" x 2 1/2"-O.L. 33 1/2"

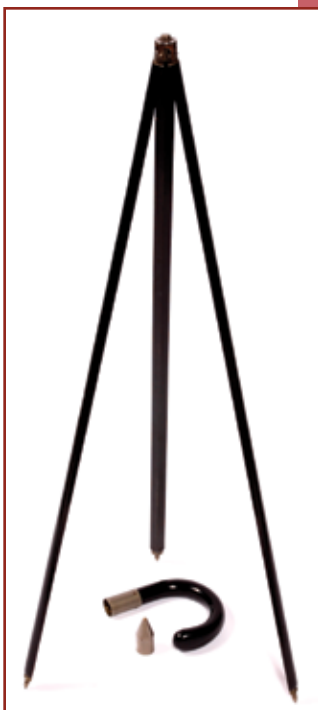
**\$300-\$500**

**287. Tri-pod System Stick**

C. 1930-A metal system stick with a spike metal ferrule-O.L. 36"

**\$200-\$400**

**287.**



**284.**



**286.**



**285.**



**288. Art Nouveau Ivory**

C. 1895-Combination ivory and bone handle with polychrome etching, pair of ivory eyelets, ivory collar, Malacca shaft and a horn ferrule-H. 3 ½" x 1 ¼", O.L. 37"

**\$400-\$800**

**289. Native American**

C. 1925-Carved pipestone handle, rectangular oak shaft with painted snake, and no ferrule-H. 3" x 3", O.L. 39"

**\$400-\$600**

**290. Ivory Knob**

C. 1840-Ivory knob, coin silver collar engraved to "R. A. Cony, Augusta, Me.", pair of coin silver eyelets, red oak shaft and a 2 ½" metal ferrule-H. 1 ½" x 2", O.L. 33 ¾"

**\$300-\$500**

**291. Ivory Knob**

C. 1830-Coin silver collar, inlaid medallion with brass cannon, rich mahogany shaft and a 3" brass and iron ferrule-H. 2" x 1 ¼", O.L. 35"

**\$300-\$500**

**288.**



**289.**



**291.**



**290.**





**292.**



**292. Silver Dress**

C. 1875-Sun-moon-stars, a high relief casting, Malacca shaft and a horn ferrule-H. 4" x 1 3/4", O.L. 34 1/4"  
\$500-\$1,000

**293. Agate Dress**

C. 1930's-Geometric cut agate spear, gold filled collar, ebonized shaft and a brass ferrule-H. 1 1/2" x 1 1/2", O.L. 35 1/2"  
\$200-\$250



**294. Stag Dress**

C. 1910-Nice patina metal collar, hardwood shaft and a horn ferrule-H. 4 1/2" x 1 3/4", O.L. 35 1/2"  
\$200-\$250

**295. Ivory Dress**

C. 1925-Hexagonal handle, signed sterling collar, ebony shaft and a horn ferrule-H. 1" x 1 1/2", O.L. 36"  
\$200-\$400



**293.**

**295.**



**294.**





**296.**

**296. Collection of Four**  
1920-1930-A collection of four nice ivory dress sticks with an average dress length of 35"  
**\$400-\$800**

**297. Carved Asian Ivory**  
C. 1890-Carved ivory handle on both sides which has a tip to one leaf missing, ornate silver collar, one two color glass eye, hardwood shaft and a bi-metal ferrule-H. 5 1/2" x 1 1/2", O.L. 34"  
**\$500-\$1,000**

**298. Carved Mythical Folk**  
C. 1925-Stained and well carved handle, pair of two color glass eyes, gold plated collar, exotic wood shaft and a bi-metal ferrule-H. 2" x 3", O.L. 39"  
**\$300-\$500**

**299. Golf System Stick**  
C. 1940-A compartment cane for golf tees, forged bronze club like ferrule, inlaid attached silver medallion on the top of the handle, brass collar and oak shaft-H. 1 1/2" x 1", O.L. 35"  
**\$400-\$600**

**299.**



**297.**



**298.**



### 300. Nautical Whimsy

Early 20th Century-Massive whale's tooth which is attached to a vertebra shaft and a 5" horn and metal ferrule-H. 6 1/4" x 2 1/2", O.L. 39"

\$700-\$1,000

### 301. Silver Dress

C. 1830-Large ornate coin silver handle, massive Malacca shaft and a 4" brass and iron ferrule-H. 4" x 1 1/2", O.L. 36"

\$500-\$1,000

### 302. Japanese Ivory

C. 1890-A very well carved ivory handle signed with a cartouche, fluted signed sterling collar, bamboo shaft and a 2" horn ferrule-H. 4 1/2" x 1 1/2"-O.L. 36 3/4"

\$600-\$1,000





**303. Rhino Crook**

C. 1925-Rich rhino handle, signed 14kt gold collar, Malacca shaft and a horn ferrule-H. 4" x 3 1/2", O.L. 35 3/4" \$500-\$800



**303.**

**304. Ivory Mermaid**

C. 1885-A well carved semi-nude mermaid, hallmarked but unreadable ornate silver collar, Malacca shaft and a 2" horn ferrule-H. 3 1/2" x 2", O.L. 34" \$1,500-\$2,500



**304.**

**305. Full Tortoise Crook**

C. 1890-Very nice example of this genre, minor repair on the collar and on the tortoise shaft, a horn ferrule-H. 5 1/2" x 5", O.L. 39 1/2" \$1,200-\$1,800



**306. Ruby and Silver Dress**

C. 1910-A hallmarked but unreadable silver handle which has over 50 of what appears to be cabochon rubies, one ruby is missing but replaceable, ebony shaft and a metal ferrule-H. 3 1/2" x 3/4", O.L. 36" \$500-\$700



**306.**



**305.**



**307.**



**307. Ivory Hoof**

C. 1920-Nicely carved, ornate brass collar, ebonized shaft and a brass ferrule-H. 3 ½" x 1 ¼", O.L. 32 ½"

**\$300-\$400**

**308.**



**308. African American Stag**

C. 1925-Stylized black face, ribbed silver collar with minor damage, hardwood twig shaft and a tin ferrule-H. 4" x 4 ¾", O.L. 35"

**\$300-\$500**

**309.**



**309. Ivory Dress**

C. 1840-Coin silver collar and eyelets, hardwood shaft and a 3 ¾" brass and iron ferrule-H. 3 ¾" x 1 ¼", O.L. 35 ½"

**\$300-\$500**

**310.**



**310. Ivory Dress**

C. 1840-Engraved coin silver collar, hexagonal paneled sides, large Malacca shaft and a 2 ½" ferrule-H. 2" x 1 ½", O.L. 33 ½"

**\$400-\$600**

**311.**



**311. Ivory Dress**

C. 1880-Large signed sterling collar with the maker's initials "W. E.," honey Malacca shaft and a brass and iron ferrule-H. 4 1/4" x 1 3/4", O.L. 34 3/4"  
**\$400-\$800**

**312.**



**312. Advertising Cane**

C. 1935-Detroit Ball Bearing Co. Presentation, the ball rotates in the handle, American walnut shaft and a horn ferrule-H. 1 1/4" x 1", O.L. 35 1/4"  
**\$400-\$600**

**313. Horn Hoof**

C. 1920-Hallmarked British collar, silver horseshoe attached to the hoof, exotic wood shaft and a brass ferrule-H. 4" x 1 3/4", O.L. 35 1/2"  
**\$300-\$500**

**313.**



**314. Flashlight System Stick**

C. 1930-Bakelite tip, ivory collar with split, maple shaft and a horn ferrule, working condition unknown-H. 5 1/2" x 6", O.L. 37"  
**\$250-\$500**

**314.**





**315. Carved Asian**

C. 1900-A one piece carved bamboo character cane with many carved faces etc., and a brass ferrule-O.L. 36"  
**\$300-\$400**

**316. Porcelain Dress**

C. 1885-Hand painted porcelain handle with one minor flake where the handle meets the fluted brass collar, ebonized shaft and a horn ferrule-H. 1 ¾" x 2 ½",  
O.L. 36"  
**\$250-\$400**

**317. Ivory Dress**

C. 1820-Coin silver collar, pair of gold eyelets, faux bamboo oak shaft and a 4" brass and iron ferrule-H 1 ¼" x 1 ¼",  
O.L. 36"  
**\$500-\$700**

**318. Ivory Knob**

C. 1840-Coin silver collar, pair of silver copper eyelets, faux bamboo wood shaft and a 6" brass and iron ferrule-H. 1 ¾" x 1 ½", O.L. 35 ¼"  
**\$400-\$800**



**315.**



**316.**



**317.**

**318.**

**319. Art Nouveau Silver**

C. 1890-A finely cast handle with a nude baby playing with spoons in two large bowls, unsigned but tested sterling, rich mahogany shaft and a horn ferrule-

H. 3 1/4" x 1 1/4", O.L. 36"

**\$500-\$1,000**

**320. Toledo Sword**

Dated 1928-An etched and signed 24" Toledo blade, British hallmarked silver handle, brass collar, faux bamboo partridge wood shaft and no ferrule-

H. 4 1/2" x 5", O.L. 36"

**\$800-\$1,200**

**321. Carved Stag**

C. 1880-A carved one sided antler handle, metal collar, woven rope flexible shaft and a metal ferrule-H. 4 x 1", O.L. 32 3/4"

**\$300-\$500**

**322. Horse Measuring Cane**

C. 1910-A brass mounted rule with working level, monogrammed silver cap, made by "Martin and Martin", hallmarked silver crutch medallion, faux bamboo wood shaft and a bi-metal ferrule-O.L. 37 1/2"

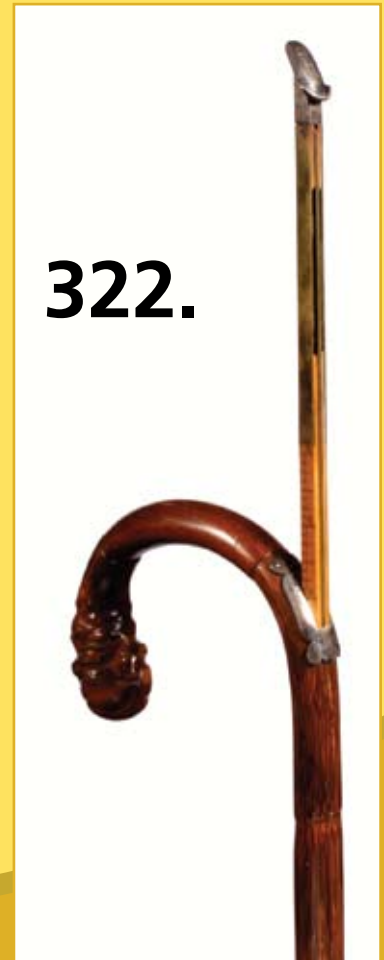
**\$400-\$600**

**319.**



**321.**

**322.**



**320.**





**323.**

**323. G.A.R.**

Late 19th Century-Annual encampment souvenir from the 1892 G.A.R. reunion, General Grant in high relief, G.A.R. medal also in high relief, exotic wood shaft and a bi-metal ferrule-H. 1 ½" x 2 ¾", O.L. 34 ½"  
\$300-\$400



**324.**



**325.**



**324. Saks Fifth Avenue Art Deco Dress**

C. 1930-Signed 18kt collar, ebony oval shaft which is signed Saks and a horn ferrule-H. 1 ¼" x 7/8", O.L. 35 ½"  
\$300-\$500

**325. Ornate Silver**

C. 1880-British hallmarked but no completely readable, Malacca shaft and a brass and iron ferrule-H. 1 ½" x 3", O.L. 33 ½"  
\$400-\$600

**326. Asian Dress**

C. 1890-A pair of carved squirrels with glass eyes, oval cabochon garnet with silver mountings, silver collar, exotic wood shaft and a bi-metal ferrule-H. 1 ½" x 1 ½", O.L. 34"  
\$400-\$600



**326.**





**327.**

**327. Toledo Sword**

C. 1906-27 ½" signed and etched two sided Toledo blade, silver mounted crook handle, faux bamboo exotic wood shaft and a bi-metal ferrule-H. 3 ½" x 6 ½"-O.L. 34 ¾" \$500-\$1,000

**328. Silver Sunday Stick**

Dated 1908-Stylized sterling Sunday stick, hallmarked but unreadable, oak shaft and a replaced bi-metal ferrule-H. 3 ½" x 2 ¾", O.L. 36" \$300-\$500

**329. Asian Bone**

C. 1885-Nicely carved bone handle signed with Asian characters, gold filled ornate collar, ebony shaft and a horn ferrule-H. 6 ½" x 1 ¼", O.L. 35 ½" \$300-\$500



**328.**



**329.**



**330. Anglo Indian Ivory**

C. 1900-Carved ivory dog with pheasant in mouth, small horn and ivory collar, inlaid mahogany shaft with over 200 inlays and a brass ferrule-H. 1 ½" x 1 ¼"- O.L. 35"

**\$500-\$800**

**331. Anglo Indian Ivory**

C. 1900-An ivory cat with a rabbit in its mouth, metal collar, inlaid mahogany shaft with over 200 inlays and a brass ferrule-H. 1 ¼" x 1 ½", O.L. 37 ½"

**\$500-\$800**

**332. Ivory Dress**

C.1920- Unsigned silver collar, ebony shaft and a small horn ferrule-H. 1 ½" x 1 ¼", O.L. 35 ¼"

**\$250-\$350**

**333. Japanese Silver**

C. 1890-Ornate silver hand done handle, rich Malacca shaft and a metal ferrule-H. 1 ¼" x 1 ¾", O.L. 33"

**\$300-\$500**

**330.**



**331.**



**333.**

**332.**



**334. Turquoise Dress**

C. 1930-Persian turquoise inlaid into a Britannia sphere handle, ebony shaft and a horn ferrule-H. 1 ¼" x 1 ½", O.L. 34 ½"  
\$200-\$300



**334.**

**335. Art Deco Dress**

C. 1930-Gold collar, ebony shaft and a horn ferrule-H. 1 ¼ x 1", O.L. 36"  
\$200-\$400

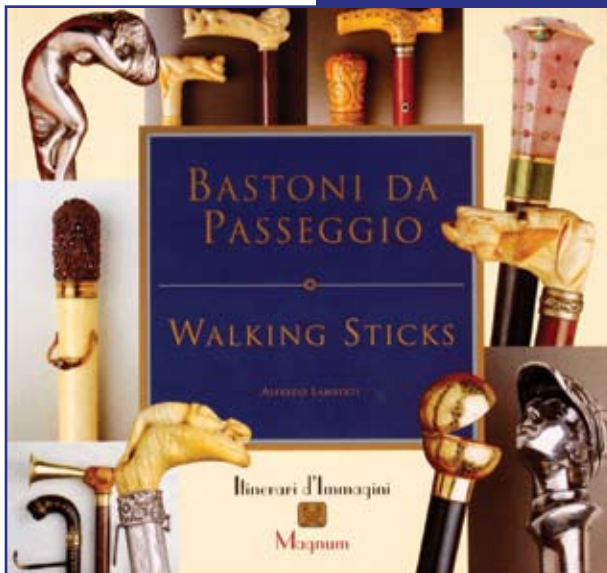


**335.**

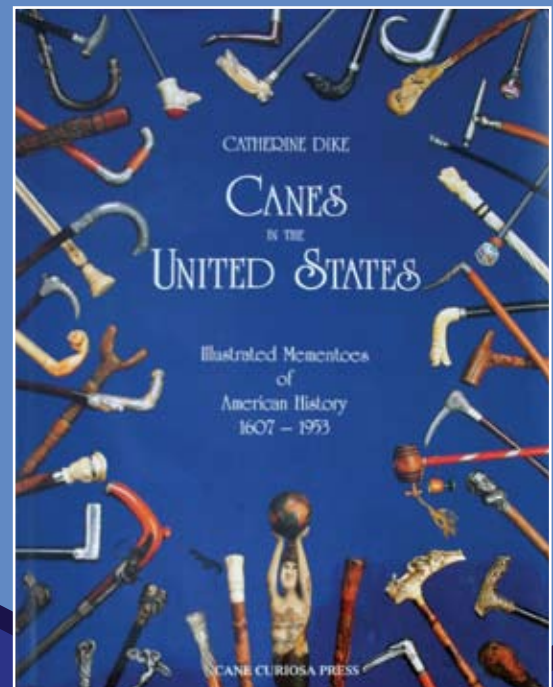
**336. "Bastoni Da Passeggio"**  
by Alfredo Lamberti.  
\$100-200

**337. "Canes in the United States"**  
by Catherine Dike  
\$250-350

**336.**

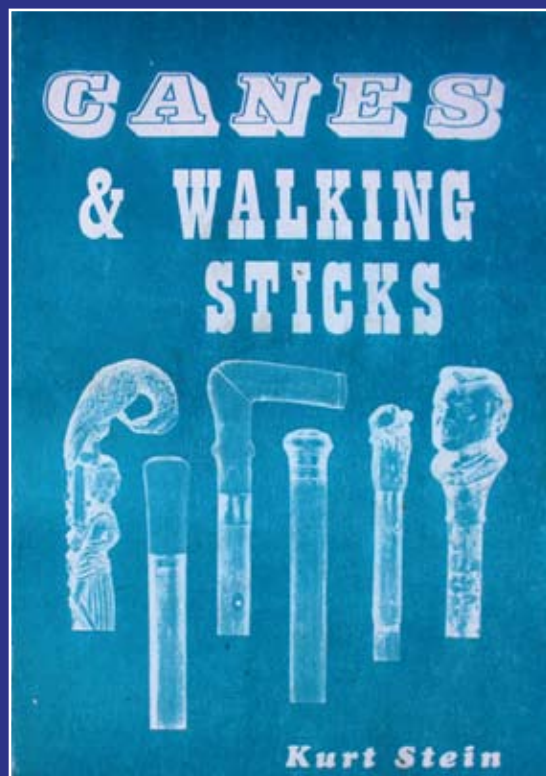


**337.**





**338.**



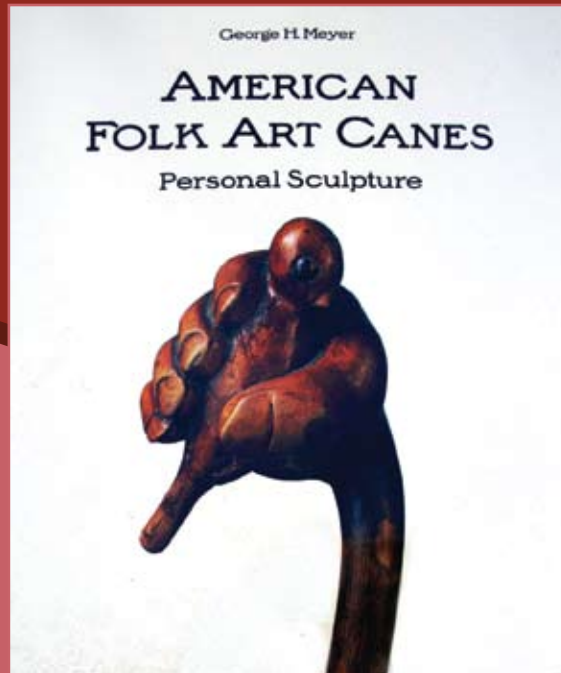
**338. "Canes and Walking Sticks" by Kurt Stein**  
Green soft copy  
\$200-250

**339. Art Modern Cane and Umbrella Stand**  
Chrome and metal H.-36"

**339.**



**340.**



**340. "American Folk Art Canes" by George H. Meyer**  
A mint copy of this sought after book which is still in its original shrinkwarp and has never been opened.  
**\$100-200**

**341.**



**341. Carved Bamboo Cane Stand**  
C.1890 A massive piece of bamboo with carved dragons and other Asian figures.  
H.22" x 7"  
**\$200-300**

**342. Group of Leather Disk Cane**  
C. 1925 A group of four leather disk canes in various sizes.  
**\$200-250**



**342.**



Kimball M. Sterling, Inc. (TFL-1915)  
125 West Market Street Johnson City, Tennessee 37601  
kimballsterling @ earthlink.net  
423.928.1471

Member National Auctioneers Association  
© Copyright 2007 Kimball M. Sterling, Inc.

Photography by James Price  
Catalog Design by KT Design, Inc. - [www.kristaft.com](http://www.kristaft.com)