

KIMBALL M. STERLING, INC.  
PRESENTS AN  
ANTIQUE CANE  
AUCTION

SATURDAY, APRIL 18TH, 2009



*Kimball*



KIMBALL M.  
STERLING, INC.

PRESENTS AN

# ANTIQUE CANE AUCTION

SATURDAY, APRIL 18TH, 2009

11:00 A.M. EST

## PREVIEW

FRIDAY, APRIL 17TH - 12:00 P.M. - 5:00 P.M. E.S.T.

SATURDAY, APRIL 18TH - 9:00 A.M. E.S.T.

OR BY APPOINTMENT THREE WEEKS BEFORE THE AUCTION

THE AUCTION WILL BE CARRIED  
LIVE ON THE INTERNET AT [LIVEAUCTIONEERS.COM](http://LIVEAUCTIONEERS.COM)

KIMBALL M. STERLING AUCTION GALLERY  
125 WEST MARKET STREET JOHNSON CITY, TENNESSEE 37601  
KIMBALLSTERLING @ EARTHLINK.NET  
423.928.1471

MEMBER NATIONAL AUCTIONEERS ASSOCIATION  
[WWW.AUCTIONAUCTION.COM](http://WWW.AUCTIONAUCTION.COM)



# TERMS & CONDITIONS

1. Cash, check, MasterCard, or Visa. A 15% buyers' premium will be added to the hammer price as part of the sale price for in-house, phone, and absentee bidders. We reserved the right to hold purchases until the buyers checks clears if buyer is not known by us. Bank letter of credit is acceptable. A 20% buyers fee will be charged to internet bidders.

2. Mail or phone bids are accepted; the firm may require a deposit.

3. Kimball M. Sterling, Inc. has endeavored to catalog and describe the property correctly. All property is sold as is and neither the auction company nor the consignor will be responsible for descriptions, genuineness, provenance or condition of the property. No statement in the catalog made orally at the sale or otherwise shall be deemed to be a warranty, representation, or an assumption of liability.

4. In the event of any dispute between bidders, the auctioneer shall have total discretion to determine the successful bidder, in which his determination shall be final or to re-offer and resale the article in dispute. Title of the item or items purchased by the bidder will pass at the fall of the gavel and declaration of bidder.. This is not an approval auction.

5. Principal auctioneer: Kimball M. Sterling #2467.  
B. Elizabeth Sterling, auctioneer # 5757. Firm Kimball M Sterling Inc. TFL-1915

6. Bidders may bid live on the Internet by visiting <http://www.auctionauction.com> You may also view the auction at this site and bid by phone.

7. Communications:

Telephone 423-928-1471.

Fax 423-928-2816.

Cellular 423-773-4073, 423-773-4072.

Email [kimballsterling@earthlink.net](mailto:kimballsterling@earthlink.net)

8. Worldwide shipping available. International sales which are protected by C.I.T.E.S. permits can also be arranged. Estimated bidders cost per cane is \$255.00 for permits and inspections plus the shipping cost. A permit may also be required by your country . Our packing service is free but the buyer must pay postage and insurance fees.

9. Kimball M. Sterling, Inc. will not be held responsible for bids not received in time for the auction or slow Internet bids. We will not be responsible for items left on our location for over 30 days.

10. Sale will be conducted at 125 West Market Street, Johnson City, Tennessee.37604. Announcements day of the sale take precedence over pre-sale advertising. Any litigation that pertains to this auction will be conducted in the county of Washington in Tennessee and is agreed upon by registering for this auction.

11. Airport is the Tri-Cities Airport, which is approximately 20 miles from the gallery. Internet catalog and live bidding available at [www.auctionauction.com](http://www.auctionauction.com) Best Western Hotel: 423-282-2126. A very fine hotel which offers Sterling Auction a discount rate is the Carnegie Hotel 1216 W State of Franklin Rd, (423) 979-6400.

12. Please call for condition report on sale lots or email us. We do send out multiple photos by email of any lot in the auction .By registering for this auction you accept the terms and give Kimball M. Sterling auctions the right to charge your credit card on file for purchases and shipping, which you have entered on your registration.

13. Parking service is free.







### 1. Carved Ivory Dog

Late 19th Century-A large carved elephant ivory handle with two color glass eyes, ribbed signed sterling collar, honey malacca shaft and a horn ferrule-H. 2 ½" x 2", OL. 34 ¾" \$1,200-\$1,500

### 2. Carved Ivory Cat

Late 19th Century-A very well carved handle, ornate silver collar with British hallmarks, malacca shaft and a horn ferrule-H. 2" x 3 ½", OL. 36" \$1,500-\$2,000

### 3. Carved Ivory Shoe

C. 1880-A segmented full ivory shaft with a nicely carved Victorian shoe and cartouche on its handle. The cane is probably a traveling suitcase cane due to it's two part shaft-H. 5 ½" x 2", OL. 36" \$1,200-\$1,400

3.



2.





**4. Tiffany Gold and Ivory**  
 Dated 1906-A signed and dated  
 Tiffany end cap, baleen eyelets,  
 a segmented twig spur shaft with  
 baleen inlays and no ferrule-H. 2" x  
 3/4", OL. 36"  
*\$1,400-\$1,600*

**5. Inscribed Ivory Dress**  
 Dated January 26, 1868-A finely  
 carved pommel handle, sterling  
 collar inscribed Bethlehem PA, and  
 various other Pennsylvania Dutch  
 names. It has a ebony shaft and a  
 brass ferrule-H. 6 1/4" x 1 1/4", OL. 35  
 1/2"  
*\$800-\$1,000*

**6. Silver and Ivory Dress**  
 C. 1890-An Art Nouveau silver over  
 ivory handle with various depictions  
 of flowers and leaves. The ebony shaft  
 has a bi-metal ferrule-H. 5" x 2 1/4",  
 OL. 36 1/2"  
*\$800-\$1,000*



4.



5.



6.



7.



### 7. Contemporary Political Cane

A red white and blue convention cane which has a silver Kennedy half contained under glass with a photograph of Barack Obama-H. 1 ½" x 2", OL. 36 ½"

*\$100-\$200*

### 8. Carved Dog Automation

Early 20th Century-A carved and painted dog with a boiler hat and two color glass eyes. When the button underneath the chin is pushed the mouth opens and the hat rises, hardwood shaft and a bi-metal ferrule-H. 3 ¾" x 2 ¾", OL. 36 ¼"

*\$500-\$700*



8.

### 9. Victorian Ivory Dress

C. 1875-A finely carved ivory handle, a pair of ivory eyelets, ebony shaft and a bi-metal ferrule-H. 3 ¼" x 1 ½", OL. 36"

*\$400-\$600*



9.



### 10. Carved Bone Skull

Mid 20th Century-A carved and stained handle with a moveable lower jaw, mahogany shaft and a small bone ferrule-H. 1 ¼" x 2", OL. 35"

*\$200-\$300*



10.



**11. Masonic Gold and Ivory**  
 C. 1890-An original carved ivory handle which has a Masonic emblem, a signed 14kt 1" gold collar, faux bamboo partridge wood shaft and a 2" bone ferrule-H. 3 1/4" x 1 1/8", OL. 34 1/4"  
*\$600-\$800*

**12. Carved Ivory Horse**  
 C. 1880-An unusual handle which has a striking patina, two color glass eyes, fluted silver collar, ebony shaft and a horn ferrule-H. 4" x 1 3/4", OL. 35 1/4"  
*\$600-\$800*

**13. Large Ivory Dress**  
 C. 1910-A massive carved handle of a very cute dog with two color glass eyes, signed silver collar, exotic wood shaft and a horn ferrule-H. 3 3/4" x 1 3/4", OL. 36"  
*\$1,300-\$1,500*



11.



12.



13.





14.

#### 14. Court Sword Cane

Late 18th Century-A near mint example, ivory handle, coin silver eyelets, various silver collars, rich malacca shaft and a 3" brass ferrule. The 25" blade has much of its bluing and gilding still apparent and a blood groove runs throughout both sides-H. 1 3/4" x 1 3/4", OL. 35 3/4"  
\$1,500-\$2,000



15.

#### 15. Folk-Art Pig Dog

C. 1900-A one piece burl and found walking stick, is probably the first pig dog we have ever sold. The cane retains most of its original bark and no ferrule-H. 4" x 1 3/4", OL. 36"  
\$200-\$400



#### 16. Tiffany Gold Dress

Early 20th Century-A signed Tiffany 18Kt gold dress cane, ebony shaft and a horn ferrule, signed Tiffany and Co. 8944 Makers 6727-H. 1 1/2" x 1 1/2", OL. 36"  
\$1,200-\$1,400

16.





### 17. Victorian Erotic

Late 19th Century-A hardwood crook one piece cane with a Satyr reaching for a Victorian lady in her pantaloons and boots. Appears to be silver, the shaft is some type of exotic wood and it has a bone ferrule-OL. 36"

*\$800-\$1,200*



17.

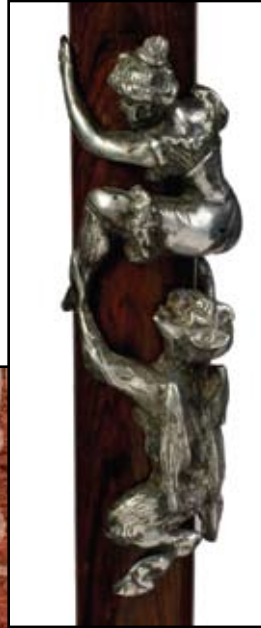


18.

### 18. Cat and Mouse Folk

Early 20th Century-A carved primitive cat ready to attack a mouse, signed sterling collar, partridge wood shaft and a bi-metal ferrule-H. 4" x 2", OL. 36"

*\$250-\$350*



### 19. Rhino Sword Cane

C. 1830-A very fine example with brass collars and fittings, locking mechanism with a 4 sided 14 1/4" blade, malacca shaft and a 4" brass ferrule-H. 4 1/2" x 4", OL. 36"

*\$1,000-\$1,500*



19.



### 20. Tortoise and Snake Dagger Cane

C. 1860-An unusual combination of a tortoise handle and what appears to be python skin covering a hardwood shaft, brass fittings, locking 6 1/2" 4-sided engraved blade and a metal ferrule. There is some minor loss to the tortoise handle because of age and also the shaft.-H. 3" x 4", OL. 34 1/4"

*\$800-\$1,000*



20.







24.



21.



23.



22.



### 21. Ivory and Silver Dog

Late 19th Century-A carved and stained ivory head with two color glass eyes, silver overlay on both eye brows and ears, malacca crutch shaft and a horn ferrule-H. 5 ½" x 3", OL. 35"  
\$600-\$800

### 22. Silver Mermaid

C. 2008-A finely cast signed sterling mermaid from the custom shop of Charles Daugherty, silver collar is signed C.W.D., a rich ebony shaft and a brass ferrule-H. 4" x 2", OL. 36 ½"  
\$500-\$700

### 23. Ivory Sword Cane

Late 18th Century-Carved ivory knob, three sterling collars, silver eyelets with tassel attached, signed but unreadable 17" blade self locking blade which retains part of its original bluing and gilding, rich malacca shaft and a 4" brass ferrule-H. 1 ½" x 1 ¾", OL. 36"  
\$700-\$1,200

### 24. Tiffany Silver Dress

Late 19th Century-Silver handle which is signed Tiffany and Co. Sterling, handle retains much of its original patina, stout malacca shaft and a 2 ¾" bone ferrule-H. 1 ¼" x 2 ½", OL. 36"  
\$500-\$700



### 25. French Folk-Art

Late 19th Century-A one piece carved vine with a snake for a handle and a bearded man, various faces and flowers carved on the natural knots throughout the shaft, original patina and a small iron ferrule-OL. 34"  
*\$400-\$600*



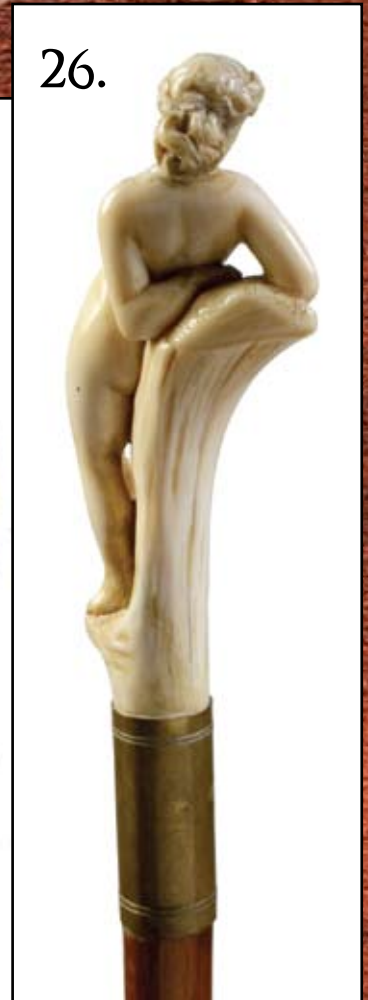
25.

### 26. Ivory Nude

Mid 19th Century-A carved classical ivory handle with original patina, original brass collar and a stepped exotic wood shaft and a brass ferrule-H. 4" x 2", OL. 34 1/4"  
*\$1,000-\$1,500*



26.



### 27. Tortoise Dress

C. 1890-A tortoise dress handle which appears to have been made in two sections, small silver collar, ebony shaft and a metal ferrule-H. 3 3/4" x 1 1/4", OL. 37"  
*\$500-\$600*



27.





29.



30.



28.

### 28. Ivory Bacchus

Victorian-A nicely carved ivory handle, silver collar, ebony shaft and a metal ferrule-H. 4" x 2 1/4", OL. 36 1/2"  
\$1,500-\$1,700

### 29. Floating Turtle

Early 20th Century-The handle has a glass lense by which the owner can view a dancing turtle which is put into motion by the movement of the cane, small metal collar, bamboo shaft and a brass ferrule-H. 1 1/2" x 2", OL. 34 1/2"  
\$200-\$300

### 30. Horn Dagger Cane

C. 1900-A two piece horn handle with a silver band which connects the pieces, metal collar, 12" 3-sided dagger, bamboo shaft and a small metal ferrule-H. 5" x 2 1/2", OL. 36 1/2"  
\$300-\$500



### 31. Erotic African

#### American Ivory

19th Century-This cane comes to us from a private Ft. Lauderdale, Fl collection and it has been in that collection for over 30 years. A very fine carving done by a master's hand. The facial expressions speak for the pairs passion and love for each other. The fluting on both costumes is of the greatest detail. To enjoy the complexity of this cane, one must hold it in their hands and turn it slowly. The silver collar has a British hallmark, mahogany shaft and a brass ferrule-H. 4" x 2 1/2", OL. 38 1/2"  
*\$14,000-\$18,000*





### 32. Erotic Ivory

19th Century-This wonderful, erotic ivory cane comes to us from the same Ft. Lauderdale collection and has been in that collection for over 35 years. Every detail in the clothing and the bodies have been paid close attention to by the carver. The carving represents a place in time where gentlemen wore pony tails and women had flowing hair. It has a signed 14Kt gold collar, an exotic wood shaft and a horn ferrule-H. 3 1/4" x 2 3/4", OL. 39"  
*\$14,000-\$16,000*





**33. Erotic Ivory Stanhope**  
 C. 1900-A carved ivory handle which contains a black and white Stanhope of a full frontal French nude prostitute. It has a metal collar, malacca shaft and a 2" brass ferrule. The handle has average ivory striations and a full frontal carving of a bearded man which has African American features. Ft. Lauderdale Collection-H. 4" x 1 3/4", OL. 35 1/2" \$2,000-\$3,000



**34. Scrimshaw Sword Cane**  
 Mid 19th Century-The handle and part of the shaft is tightly covered with whaling or nautical knotted cord decoration. The spring hilt blade is 22 1/2" and appears to be custom built by probably a sailor on a ship. It has an engraved silver collar, malacca shaft and a metal ferrule. The spring hilts are made of nickel silver and have pewter spacers between them and the blade. One hilt springs precisely and the other needs help. Ft. Lauderdale Collection H. 4 1/2" x 1 1/2", OL. 34 3/4" \$2,000-\$2,500







35.



### 35. Nautical Ivory

Mid 19th Century-An architectural nautical cane with inlaid tortoise and baleen, the shaft is column and spiral carved and it has a baleen spacer, four inverted tortoise triangles are inverted in the handle and also a small piece of tortoise on the top. The handle also has an influence of the Intuits and their use of stylized birds. Ft. Lauderdale Collection - H. 2 ¼" x 1 ¼", OL. 31 ¼"

\$2,500-\$3,500

### 36. Scrimshaw Pan Bone Dress

C. 1870-A carved one-piece high relief nautical cane, various flowers and leafs and a cartouche which has been left blank. A very rare one piece whale bone cane .Ft. Lauderdale Collection -OL. 32 ½"

\$2,500-\$3,000



36.





### 37. Continental Folk

C. 1900-A one piece carved, probably Italian high relief folk cane. The handle is a full bust of a gentleman with a mustache and the initials S.M. appear on his back. There are four full figures beneath the bust which are entitled the following names, Adam, Eva, Spieo, and Peno. Beneath those figures are another two fully carved figures. One being signed on his back Bresci and the other a representation of a devil like figure. There's also a finely carved snake with brass and beaded eyes which is swallowing the leg of the Bresci figure. The snake has pyrographic decoration and it has no ferrule. The cane retains its original patina-OL 37"

\$1,500-\$2,500

### 38. Ivory Knob

C. 1820-Nice early example of a going ashore cane with original silver collar, brass eyelets and a 3" iron ferrule. The shaft contains most of it's original patina and fungal growth-H. 2" x 2", OL. 36"

\$300-\$500

38.



37.







39.

40.



**39. Bludgeon Crook Dress**  
Early 20th Century-The shaft and the handle are made of various leather discs which have been ebonized. It has a silver collar and a silver handle tip, and a 2" silver ferrule-H. 4 3/4" x 6", OL. 34 1/2"  
\$200-\$300

**40. Mikilla Staff**  
C. 1850-A very rare period staff which has had a professional repair in the center of the natural branch. The 4 1/4" ferrule unscrews to expose a 3" triangular blade. There is various etchings and engravings throughout the handle which also has a 4 sided iron pike-H. 8" x 1 1/2", OL. 63"  
\$400-\$600

**41. Silver Dog Dress**  
Late 19th Century-A nice German silver casting, ebony shaft and a horn ferrule-H. 2 1/4" x 2 1/2", OL. 37 1/2"  
\$500-\$800

**42. Carnelian Knob Dress**  
Early 19th Century-The elongated handle has a fluting shape, a deep black ebony shaft and a metal ferrule-H. 2 3/4" x 1", OL. 38"  
\$400-\$700



42.



41.



### 43. Anglo-Indian Dress

C. 1900-A fine silver knob with a silver applied belt collar, malacca shaft and a metal ferrule, handle is done in high relief with Cutch decorated techniques-H. 2 ¾" x 1", OL. 35"

*\$500-\$800*



43.



### 44. Coquilla Nut Pomander

C. 1790-This unusual cane has a silver collar with the name "Geo. French Exetr", has a clear set of hallmarks which date this English example. This type cane was sometimes referred to as physician canes-H. 2 ½" x 1 ¼", OL. 35 ¼"

*\$1,000-\$2,000*



44.



### 45. English Enamel Brigg Cane

Late 19th Century-A very fine British cane which combines Japanese import silver and enamel, marked Brigg on the rosewood shaft, metal ferrule and all original, this type of cane very rarely comes on the market today-H. 1 ¾" x 1", OL. 35 ¼"

*\$800-\$1,200*

45.







46.



**46. Sevres French Porcelain**  
Late 19th Century-A very nice painted porcelain handle done in great detail, gilt metal collar, ebony shaft and a horn ferrule-H. 3" x 1 3/4", OL. 37 1/2"  
\$500-\$1,000

**47. Opal Agate Dress**  
Early 20th Century-The milord shape handle is a very well proportioned agate adorned by two faceted washers and various plain silver sleeves, Brazilian rosewood shaft and a long horn ferrule-H. 2 1/2" x 1 1/4", OL. 36 1/2"  
\$700-\$1,000

**48. Spatters and Snakes Dress**  
Late 18th Century-Carved rosewood handle, 18kt gold collar and a metal ferrule, the snake has blue turquoise eyes and is probably of French origin-H. 7" x 4", OL. 37"  
\$600-\$1,200



48.



47.





**49. Meissen Porcelain Dress**  
 C. 1860-Very fine hand painted  
 Micen handle, rich malacca shaft,  
 grooved and gilt collar and a horn  
 ferrule, in fine original condition-H.  
 2 ½" x 1", OL. 37 ½"  
 \$700-\$1,200

**50. Ivory Crutch**  
 Late 19th Century-The ivory handle  
 has two panels showing dogs heads  
 framed by oak leafs and acorns,  
 ivory collar, ebony shaft and an ivory  
 ferrule-H. 4 ½" x 4 ¼", OL. 36 ¾"  
 \$800-\$1,200

**51. Anglo-Colonial Silver Dress**  
 Late 19th Century-The knob has an  
 unreadable hallmark, rosewood shaft  
 and a metal ferrule-H. 2 ½" x 3 ½",  
 OL. 39 ½"  
 \$200-\$300

**52. Silver Art Nouveau**  
 Dated 1901-Heavy silver handle,  
 ebony shaft and a metal ferrule.  
 This opera handle is modeled in  
 sharp relief, depicts hunting scenes,  
 Baroque elements, Diana and many  
 other allegorical items-H. 3 ¾" x 2  
 ¼", OL. 36 ¾"  
 \$500-\$900



49.



51.



50.



52.





53.



### 53. Silver Viennese Dress

Late 19th Century-Applied floral and wire decorations, an ebony shaft adorned with silver and a horn ferrule. It has a matching silver collar, neck and cap-OL. 36 1/4" \$500-\$1,000

### 54. Silver German Dress

Late 19th Century-A large silver handle, rosewood shaft and a horn ferrule, silver is signed with a crescent moon and crown and also .800-H 4 1/4" x 2 1/2", OL. 35 3/4" \$500-\$1,000

### 55. American Silver Dress

Late 19th Century-Fine silver handle, ebony shaft and a bronze ferrule. The cane is signed "F. & B. for Theodore Foster and Brother's Company"-H. 2 1/4" x 1", OL. 37 1/2" \$400-\$700



54.



55.





**56. Viennese Agate Dress**

Early 20th Century-A grey agate knob with a lapis collar, dark rosewood shaft and a bronze ferrule-H. 2 ¾" x 1", OL. 38 ¼"  
\$400-\$700

**57. Elephant Silver Dress**

Early 20th Century-A large silver handle with an Asian elephant, a pair of glass eyes, ebony shaft and a horn ferrule. The handle is signed 925 for sterling silver and also has a hallmark of "AM"-H. 4 ¾" x 4 ½", OL. 37 ¼"  
\$300-\$600

**58. Silver Gilt Eagle Dress**

Late 19th Century-A very nicely cast eagle head which is most likely French, rosewood shaft and a horn ferrule. The eyes are inset with ruby cabochons-H. 2 ½" x 2 ½", OL. 36 ½"  
\$700-\$1,000

**59. Silver European Dress**

C. 1925-A nice Art Deco handle, ebony shaft and horn ferrule. The handle has a hammered surface and an 800 hallmark-H. 3 ¾" x 1 ¾", OL. 36 ¾"  
\$300-\$500



59.

56.



57.



58.







## 60. Whale Tooth Nautical

Late 19th Century-A natural whale tooth handle and collar which retains its original patina, a partridge wood faux bamboo shaft and a brass and iron ferrule-H. 5" x 1 3/4", OL. 35"  
\$500-\$700



## 61. Nautical Tortoise and Ivory

C. 1870-A sailor made whale tooth dress handle with a tortoise inlaid disc. The handle is attached to the 1/3 hexagonal rosewood shaft by a coin silver pin. It has two coin silver diamond shape eyelets and a 2" whale bone ferrule-H. 1 1/2" x 1 3/4", OL. 36 1/2"  
\$500-\$600

## 62. Scrimshaw Whale Ivory Fist

C. 1870-A nicely carved nautical fist with baton, engraved silver collar "To L. Gray", carved lanyard holes, carved wood exotic shaft and a 1 1/2" ivory ferrule-H. 2" x 2", OL. 37 1/4"  
\$1,000-\$1,200



## 62.





**63. Scrimshaw Walrus and Whale**

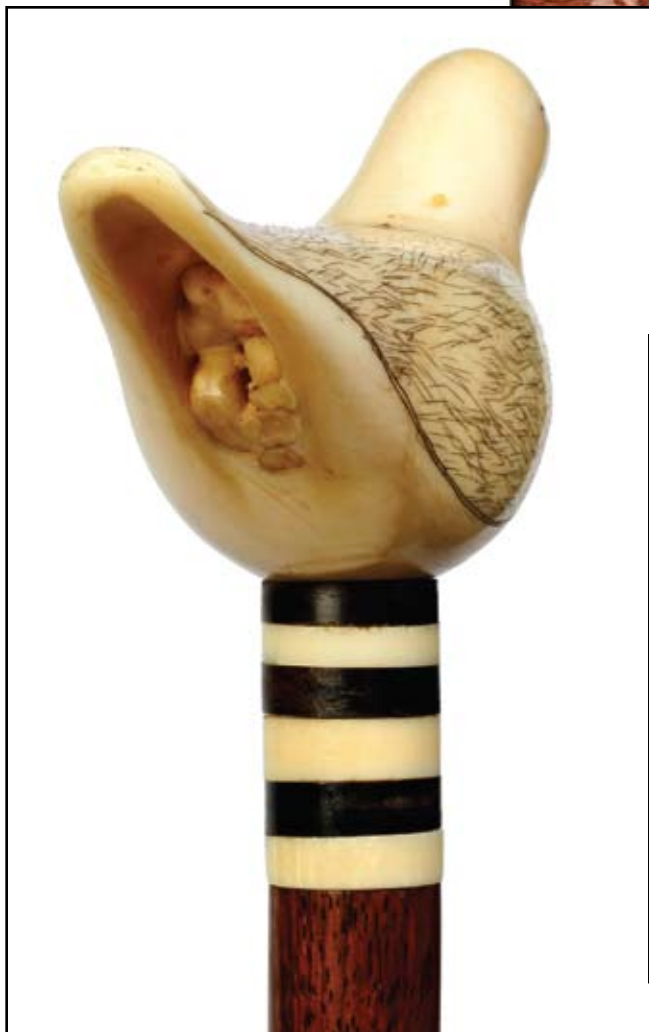
C. 1870-A nice sailor made cane with a walrus ivory handle, both wood and walrus ivory spacers and a whale bone shaft. Cane retains its original patina and it has an original 2 ¼" brass ferrule-H. 3 ¾" x 1 ¼", OL. 35"

*\$1,400-\$1,600*

**64. Whale's Tooth Bird**

C. 1885-Carved stylized bird with scrimshaw decoration which is done from a large whale's tooth. The collar has six alternating rings of baleen and ivory. It has a well proportioned oak shaft and a whale bone ferrule-H. 5" x 2 ½", OL. 34 ¼"

*\$2,500-\$3,000*







65.



**65. Nautical Whale Bone**  
C. 1870-A whale ivory handle, baleen and wooden rings, and a whale bone shaft. This is a very nice original nautical cane.-H. 3 ¾" x 5 ¼", OL. 35"  
*\$1,500-\$2,000*



66.



**66. Whale Bone Turk's Knot**  
C. 1875-A sailor made whale's tooth handle carved in the shape of an artistic Turks knot , ivory and baleen spacers and a very small wooden pin which attaches the handle to the shaft. It has a very rich mahogany shaft and a 2" bone ferrule-H. 1 ½" x 3", OL. 34 ½"  
*\$1,400-\$1,600*

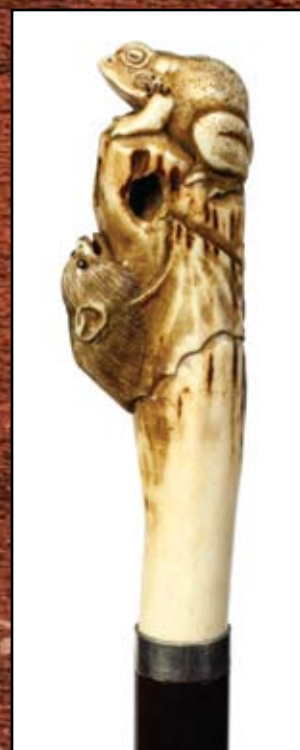
**67. Ivory Bull Dog**  
Late 19th Century-Carved elephant ivory handle, hallmarked British ornate collar engraved "F.A. Royle", rich malacca shaft and a metal ferrule-H. 2 ¼" x 2 ¼", OL. 35"  
*\$500-\$700*

67.





**68. Carved Stag Antler Dress**  
 C. 1890-A very unusual handle with a full figure frog and a full figure vampire bat with glass eyes. The carving were done by a masters hand. This cane is probably of Japanese origin and retains its original patina, small silver collar, mahogany shaft and no ferrule-H. 3 ¾" x 1", OL. 34 ½"  
*\$600-\$700*



68.

**69. Asian Ivory Dress**  
 C. 1890-A completely carved ivory handle with the head, body, and tail of a fierce dragon. The eyes and the nostrils are inlaid and there is a mystery ball which moves around in his mouth. It has a silver collar, exotic wood shaft and a bi-metal ferrule-H. 5" x 4 ¼", OL. 36"  
*\$500-\$700*

**70. Carved Asian Ivory**  
 Menji Period-A very finely carved example of Japanese work. There are three carved and stained rats which appear to become alive as you stare at them. Open carving throughout the handle and it retains its original patina, mahogany shaft, silver collar and a bone ferrule-H. 4 ½" x 1 ½", OL. 37"  
*\$1,300-\$1,600*



69.



70.





72.



71.

**71. Carved Ivory Boxer**  
C. 1900-A large and precisely carved handle with two color glass eyes and nicely exposed teeth. The handle is engraved "J. O. Sullivan", It has a ribbed silver collar, ebony shaft and a brass ferrule-H. 2 ¾" x 2", OL. 36"  
\$800-\$1,200

**72. Greek Mythological Ivory**  
Late 19th Century-A stained and scrimshawed handle with Zeus and La Pythie, French in origin, massive exotic wood shaft and a bi-metal ferrule. There is also an unusual spacer near the top of the handle and the etching on this is of museum quality. A very high art cane-H. 4" x 1 ¾", OL. 36"  
\$1,000-\$1,200

**73. Carved Ivory Fetlock**  
C. 1885-A large carved handle with India inking and average ivory striations, signed sterling collar, mahogany shaft and a copper ferrule-H. 4 ¾" x 1 ½", OL. 36 ¼"  
\$500-\$600



73.



#### 74. American Folk

Dated 1848-American folk cane with a snake with brass eyes, a carved frog which retains some of its original green and red paint and a lounging hound dog with brass inset eyes. The shaft is dated 1848 and on the underside of the dog the name "Jeremiah Reed" is carved,. A wonderful example that retains its original patina and a bi-metal ferrule-H. 5 ¼" x 1 ¼", OL. 34" \$1,000-\$1,500

74.



#### 75. Twin Snake Folk-Art

Early 20th Century-A finely carved twin folk art one piece cane with original patina, brass insert eyes and a metal ferrule-OL. 36 ½" \$400-\$600

75.



76.







79.



77.



78.



## 77. Folk Art Head

Early 20th Century-Carved folk art head which retains much of its original but dingy paint, oak shaft and a small metal ferrule-H. 2 ¼" x 2 ½", OL. 35"

\$400-\$500

## 78. Ivory Crutch

Late 19th Century-Massive carved handle with average ivory striations, basket woven silver collar, near mint malacca shaft and a bone ferrule. This cane is old but has not seen much use over the years-H. 4 ¾" x 3 ½", OL. 36"

\$400-\$600

## 79. Carved Wooden

### Jockey Cane

Early 20th Century-A pair of very finely carved horse heads and a jockey's hat. The horses have two color glass eyes, a signed sterling ornate collar, an ebony shaft and a bi-metal ferrule-H. 4" x 1 ¾", OL. 36 ½"

\$600-\$900

## 80. American Dress

C. 1900-A gold filled and mother of pearl handle, rosewood shaft and a metal ferrule, the letter H appears as the maker's mark-H. 8 ½" x 2", OL. 36 ¼"

\$200-\$300

80.





**81. English Hard Stone Dress**

Late 19th Century-The handle probably being a variety of the mineral corundum (ruby), silver collar, ebony shaft and a horn ferrule. This cane appears to have been recently restored and is in choice condition-H. 1 ¼" x 1 ¼", OL. 37 ¾"  
\$400-\$700



81.

**82. Nephrite European Dress**

Early 20th Century-Deep black ebony shaft, slender silver collar and a horn ferrule. This cane speaks of Russian origin with its spinach green color and its fascinating structure-H. 3" x 1", OL. 35 ¾"  
\$400-\$700



82.

**83. English Ivory Dogs**

C. 1880-A large ivory handle which is precisely carved, malacca shaft, silver collar and a bronze ferrule. The cane retains its original warm patina and is very impressive in every way-H. 4" x 1 ¾", OL. 33 ¾"  
\$1,000-\$2,000



83.





84.



85.



#### 84. American Silver Dress

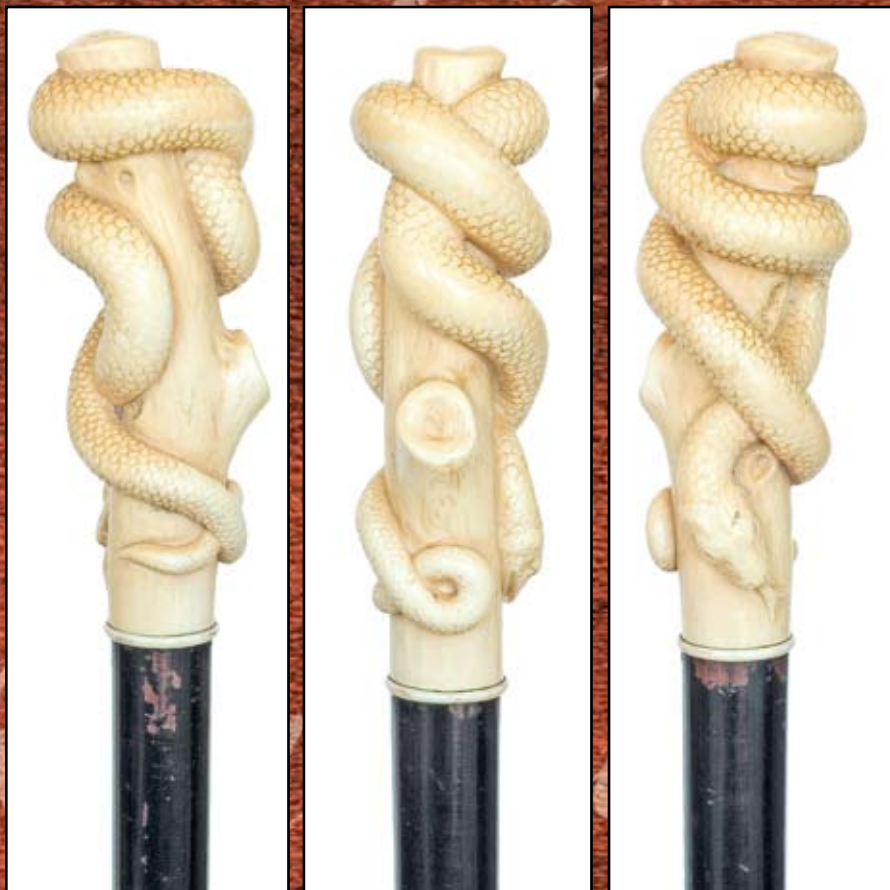
Late 19th Century-Silver handle is signed sterling above a raised collar, ebony shaft and a metal ferrule. Mint condition-H. 2" x 1", OL. 36 1/4" \$400-\$600

#### 85. Silver Chinese Export

Late 19th Century-The silver crook handle represents a fable animal, rosewood shaft and a horn ferrule. The silver has three hallmarks identifying it as being made by Sincere and Co. from Canton and Shanghai. Near perfect condition-H. 4 1/2" x 4"-OL. 35 3/4" \$400-\$600

#### 86. English Ivory Snakes

C. 1880-Very large carved ivory handle, rosewood shaft and a staghorn handle. The cane has a very striking visual presence and the carving is done by a master's hand-H. 5" x 1 3/4", OL. 37 1/4" \$1,400-\$1,800



86.





**87. European Dagger Cane**  
 Early 18th Century - Fashioned of ebonized hardwood, brass collar and ferrule. Its 7 in. tall and 2 3/4 in. wide Bec de Corbin handle detaches in a straight pull to reveal a flat forged, 15 in. long and almost 1 in. wide steel blade with two sharp edges. It bears different maker's marks on each side. Most likely French. OL. 37 1/2 in.  
*\$1,200-\$2,000*

**88. South-East Asian Dress**  
 Late 19th Century - A decorative silver handle, rosewood shaft and a horn ferrule. The handle has a fine relief surface - H. 4 1/2" x 3 1/4", OL. 39"  
*\$300-\$500*

**89. Enamel Dress**  
 Early 20th Century - Mint enamel handle, silver collar with unreadable hallmarks (probably French), exotic wood shaft and a bi-metal ferrule - H. 3 1/2" x 7/8", OL. 36"  
*\$600-\$700*

**90. Bronze Cheroot**  
 Early 20th Century - A nice and near mint example of this type of cane, partridge wood shaft and a 2 1/2" bi-metal ferrule - H. 4" x 3 1/4", OL. 35 1/2"  
*\$700-\$800*

88.



87.



89.



90.







91.

### 91. Carved Horn Parrot

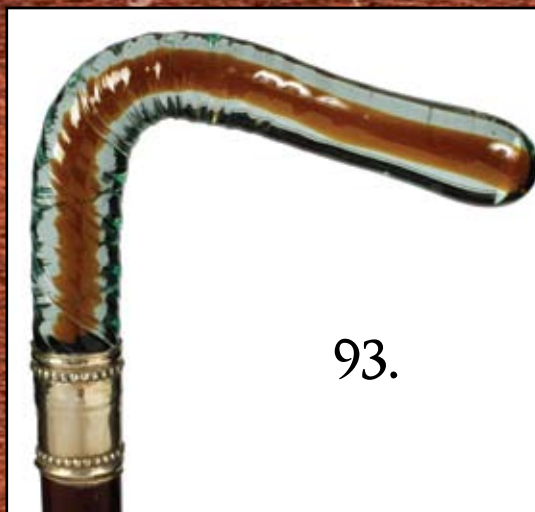
Early 20th Century-A carved head with two color glass eyes, small ivory collar, honey malacca shaft and a horn ferrule, near mint condition-H. 1  $\frac{3}{4}$ " x 1  $\frac{3}{4}$ "-OL. 36"  
\$400-\$600



92.

### 92. Gorham Silver Dress

Late 19th Century-A massive sterling handle done in high relief which has the anchor mark for Gorham Silver Company, engraved silver attached collar, massive ebony shaft and a horn ferrule-H. 2  $\frac{1}{4}$ " x 2  $\frac{1}{2}$ ", OL. 37"  
\$500-\$700



93.

### 93. End of Day Glass Dress

C. 1890-A blown one piece handle, beaded silver collar, mahogany shaft and a bone ferrule-H. 4  $\frac{1}{2}$ " x 2  $\frac{3}{4}$ ", OL. 36"  
\$300-\$400

### 94. Brass Surveyor's and Measure System Stick

Late 19th Century-Exotic wood shaft, brass collar and a bi-metal ferrule.-H. 3" x 1", OL. 37"  
\$200-\$400



94.



### 95. Erotic Ivory Dress

C. 1890-A massive carved ivory handle with the breast exposed through a decorated dance breast plate. The handle is hand painted in various colors, gold collar, ebony shaft and an ivory ferrule-H. 5" x 1 1/2", OL. 36 3/4"

\$2,000-\$2,500

### 96. Ivory Horse Cane

C. 1890-A well carved ivory horse head with two color glass eyes, signed sterling beaded collar, exotic wood shaft and a bi-metal ferrule-H. 4" x 1 1/2", OL. 34 1/2"

\$500-\$700

### 97. Carved Stag Horn Alligator

Early 20th Century-A finely carved alligator which is probably of the Jacksonville School, partridge wood shaft and a bi-metal ferrule-H. 4 1/2" x 2 1/4", OL. 36 1/4"

\$700-\$900





98.



### 98. Amber Glass Dress

20th Century-The handle is probably a snuff box with a removable lid, massive malacca shaft and a 2 1/4" metal ferrule.-H. 2" x 2", OL. 35"  
\$300-\$500

99.



100.



### 99. Carved Ivory Couple

Late 18th Century-A finely carved handle which shows the wear of the ages, small malacca shaft and a horn ferrule-H. 3 1/2" x 1 1/2", OL. 33 1/2"  
\$400-\$600

### 100. Carved Ivory Elephant

Early 20th Century-A nicely carved elephant with two color glass eyes, silver collar, hardwood original shaft and a metal ferrule-H. 3" x 2", OL. 35"  
\$500-\$700

### 101. English Flashlight Cane

C. 1930-A sterling silver handle with an operating flashlight, good British hallmarks, ebony shaft and a horn ferrule. The handle is signed "Caliber"-H. 3 1/4" x 1 3/4", OL. 36 1/2"  
\$400-\$600

### 102. Silver-plated Knob Kerri

20th Century-A bludgeon style handle with an unusual looking grotesque gentleman, ebony shaft and a bi-metal ferrule-H. 3" x 2", OL. 36"  
\$200-\$400

101.



102.





**103. Northwest Coast Walrus Ivory Folk**

Early 20th Century-A prime example of a carved walrus tusk with two animals which have baleen inlaid eyes, signed sterling collar, original bamboo shaft and a bi-metal ferrule-H. 6 ½" x 2 ½", OL. 39 ½"  
\$700-\$1,000

**104. Ivory Abe Lincoln**

20th Century-A large ivory carving of the president, silver collar, exotic wood shaft and a brass ferrule-H. 2" x 3", OL. 35"  
\$1,000-\$1,200

**105. Ivory Dress**

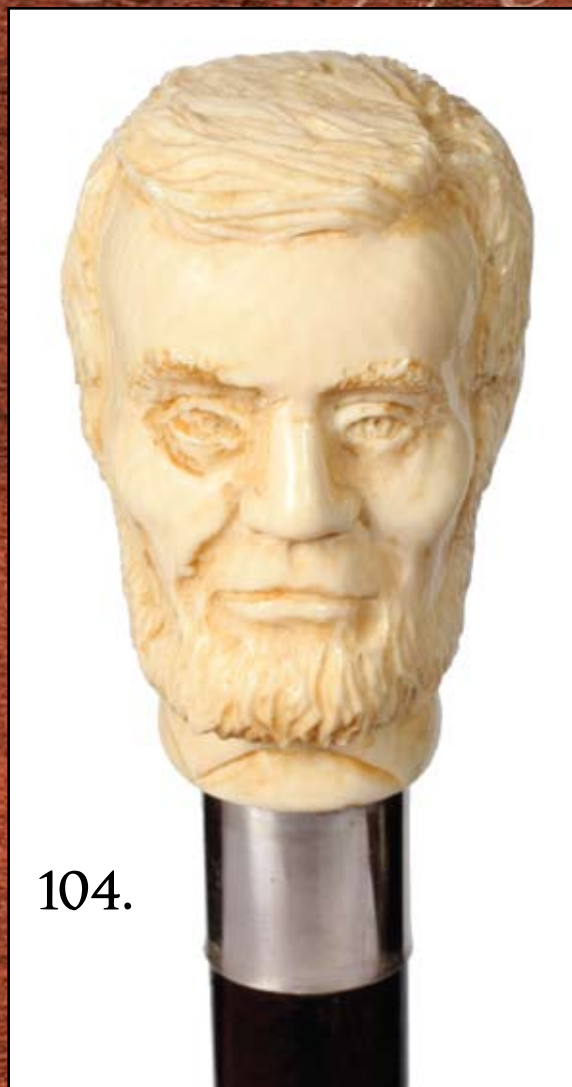
C. 1890-A nicely carved ivory handle with three frogs, dragon fly, lily pads, metal collar, rosewood shaft and a bronze ferrule. The handle has an ivory striation but appears to have never been apart-H. 4" x 1 ¼", OL. 35 ½"  
\$600-\$800



103.



105.



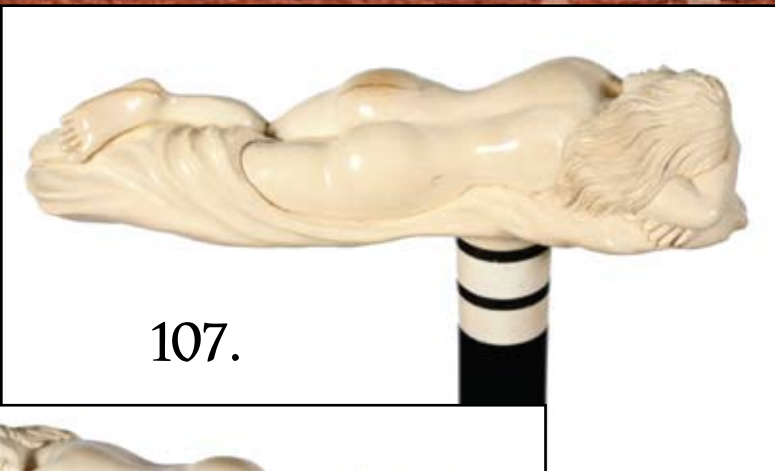
104.





106.

**106. Nautical Bone and Ivory**  
C. 1880-A carved whalebone fist holding a baton, Indian rosewood shaft and an ivory ferrule-H. 3" x 1/2", OL. 37 1/2"  
*\$400-\$600*



107.

**107. Ivory Nude**  
Mid 20th Century-Full figure carved nude, ebony shaft and an ivory ferrule, one piece carved handle from an African elephant-H. 6" x 2", OL. 36"  
*\$1,500-\$2,500*



**108. Carved Ivory Dog**  
C. 1830-1860-A large ivory handle, silver collar, malacca shaft and a metal ferrule. The dog has two color glass eyes, original patina and is in fine condition-H. 5" x 1 1/2", OL. 36 1/4"  
*\$1,500-\$2,000*



108.



**109. Memento Mori Ivory**

C. 1870-A large ivory handle, ebony shaft, chased silver collar and a horn ferrule. It is in outstanding condition with a superb original surface-H. 3 ½" x 2 ¼", OL. 36 ½"  
*\$1,400-\$1,800*

**110. Coquilla Nut Fireman**

C. 1880-This carved unusual subject matter is very striking to the eye, has an exotic wood shaft, grooved brass collar and a brass ferrule. The fireman has a lengthy handlebar mustache and two color glass eyes. It is in original condition and has good patination-H. 2" x 1 ½", OL. 37 ½"  
*\$400-\$600*

**111. Shippo Japanese Export**  
Late 19th Century-The enamel knob has restrained earthen colors with flower panels and clouds, rosewood shaft and a horn ferrule-H. 2 ½" x 1 ½", OL. 35 ¾"  
*\$400-\$700*



111.





112.



**112. English Horse Silver Dress**  
Late 19th Century-A finely cast and engraved silver handle with two large glass eyes, rosewood shaft and a horn ferrule-H 2 ¾" x 2", OL. 36 ½"  
\$400-\$800



**113. Tiger Eye English Dress**  
Late 19th Century-A stunning tiger eye knob, dark rosewood shaft, silver collar and a horn ferrule,. It is in choice condition and recently cleaned-H. 1 ¾" x 1 ¾", OL. 36 ½"  
\$300-\$500



**114. American Silver Day Cane**  
Late 19th Century-A substantial silver handle signed sterling, unreadable maker's mark, rosewood shaft and a metal ferrule-H. 4 ½" x 3", OL. 35 ½"  
\$300-\$600

113.

**115. Anglo-Colonial Silver Knob**

1885-Large silver knob engraved with a Fu shield, rosewood shaft and a metal ferrule-H. 3 ½" x 1", OL. 39 ½"  
\$200-\$300

115.



114.





**116. Cloisonné Anglo Persian**  
Late 19th Century-This enamel handle is representative of the Qajar Period, ebony shaft and a metal ferrule. These canes are rarely encountered in our auctions-H. 6 ½" x 1", OL. 39 ¼"  
\$500-\$1,000

**117. Decorative Bone Dress**  
Late 19th Century-Probably a German cane with alternating bands of dots and balls with leaf framing. The handle has a top which unscrews which has seven balls, probably a pomander, ebony shaft, metal collar and a horn ferrule-H. 5 ½" x 1 ¼", OL. 40"  
\$400-\$600

**118. Art Deco Silver Dress**  
Early 20th Century-Solid gold ring collar, snakewood shaft and a horn ferrule. It is signed .900 and also has the German crescent moon and crown mark-H. 4 ½" x 4", OL. 35 ½"  
\$400-\$800



118.



116.



117.





119.

### 119. Decorative English Silver Dress

C. 1901-A English figural handle with a fable creature, ebony shaft and a brass ferrule. The silver also has a full set of clear hallmarks which show the cane was made in London in 1901-H. 3 1/4" x 2 1/2", OL. 35 1/4"  
\$300-\$600



120.



### 120. European Silver Horse

Late 19th Century-A heavy silver handle, ebonized hardwood shaft and a metal ferrule. Superb original condition-H. 3" x 2 3/4", OL. 34 1/4"  
\$600-\$1,200

### 121. Rose Quartz Dress

Early 20th Century-The handle has a beautiful transparency and crystal structure, silver collar which is signed 800, rosewood shaft and a metal ferrule-H. 1 1/2" x 1 1/2", OL. 34 3/4"  
\$400-\$600



121.



**122. European Silver Lion**

C. 1875-A heavy figural handle which is probably Italian in origin, ebony shaft and a horn ferrule. The handle is finely hand chased and engraved. Mint condition-H. 3" x 2 1/2"-OL. 36 1/2"

*\$1,000-\$1,500*

**123. Sevres Dress**

C. 1870-Fine French porcelain knob with a portrait of Napoleon, ebony shaft, gilt collar and a horn ferrule. This cane was an item of ultimate luxury in its day. Very fine condition-H. 2" x 1", OL. 38"

*\$600-\$1,200*

**124. Glass Parade Stick**

Late 19th Century-A very nice hollow glass parade cane with a bulbous 3" handle, entire cane has a white pearled tint with threads of other colors running throughout-OL. 65"

*\$500-\$1,000*



123.





125.



**125. Carnelian Knob Dress**  
Early 20th Century-Nice reddish hues, faceted rock crystal collar and washers, ebony shaft and a horn ferrule,. A very elegant cane and in near mint condition-H. 3" x 1", OL. 37 ¾"  
*\$400-\$800*

**126. Ivory Cockatiel**  
Late 19th Century-A finely rendered ivory bird with two color horn eyes, ebony shaft and an ivory ferrule. The substantial ivory handle is carved and proportioned with great detail-H. 4 ¾" x 3 ½", OL. 35 ½"  
*\$1,500-\$2,000*



126.





**127. Art Nouveau Ivory Nude**  
Late 19th Century-A carved large  
ivory handle which is probably  
French which has been fashioned  
from a select piece of elephant ivory.  
It was carved by a master's hand.  
This handle is very elegant but yet  
seductive, an absolute gem of Art  
Nouveau artistry. It has an ebony  
shaft, leather collar and a staghorn  
ferrule-H. 5 ½" x 3 ½", OL. 39 ½"  
\$4,000-\$6,000







128.

**128. English Hardstone Dress**  
Early 20th Century-Green  
Aventurine stone carved handle,  
chased silver collar, ebony shaft and  
a brass ferrule. The finely carved  
rodent has inlaid onyx eyes and the  
silver collar has a Kendal maker's  
mark. This cane is truly from the  
Golden Age of canes and it is in  
flawless condition-H. 3" x 2 1/4",  
OL. 37 1/4"  
\$2,500-\$4,000



**129. Ivory German Dress**  
Late 19th Century-A large ivory  
handle, ivory collar, ebony shaft and  
a metal ferrule-H. 5 1/2" x 3 1/4",  
OL. 36 1/2"  
\$1,000-\$1,500

129.





**130. American Ivory Knob**  
 Dated 1891-A high relief carved handle with roses and a bug, rosewood shaft, gilt collar and a metal ferrule. The collar is engraved Xmas 91-H. 2 ¾" x 1", OL. 37"  
 \$400-\$700

**131. European Dress**  
 Early 20th Century-The knob combines ivory, rhino horn and silver. It has a rosewood shaft and a metal ferrule. The cane is most likely French and is in near mint condition. The rhino horn shield is engraved with a stallion's head-H. 1 ½" x 1", OL. 37"  
 \$400-\$600

**132. Japanese Export Ivory**  
 Meiji Period-Engraved and carved silver handle, rosewood shaft and a stag horn handle. The handle has a hollowed core that reduces its weight and makes it more pleasing to the eye-H. 2 ½" x 1", OL. 37 ½"  
 \$600-\$1,000

131.



132.



130.





133.



134.



**133. German Hunting Dog**  
C. 1870-A carved ivory handle done in high relief, ebony shaft and a bronze ferrule-H. 4 ¾" x 1 ¼"-  
OL. 36"  
\$500-\$800

**134. Ivory Stallion**  
Late 19th Century-A striking ivory handle with big glass eyes, malacca shaft and a horn ferrule, beautifully aged and has great patination-H. 3 ½" x 2", OL. 37 ¾"  
\$800-\$1,500

**135. French Erotic Ivory**  
Mid 19th Century-A nice original erotic ivory, malacca shaft and ivory ferrule. It has its original eyelets and silk loop with tassel, has its original patina and comes to us from an old Canadian cane collection-H. 2 ¾" x 2", OL. 37 ½"  
\$2,500-\$3,500



135.





### 136. Ivory Grey Hound

Late 19th Century-A figural ivory handle which has a muzzled grey hound, rosewood shaft, metal collar and a horn ferrule. Original patina-H. 4 ½" x 1 ¾", OL. 37 ¼"  
\$600-\$1,000



136.

### 137. English Ivory Dress

Hallmarked 1910-A fine English cane done in the Japanese style, rosewood shaft, chased silver collar and a horn ferrule. The handle depicts a hawk watching a mouse under its paws. The cane retains its natural rich patina and is in fine condition-H. 4" x 1 ¼", OL. 38"  
\$1,000-\$2,000

137.







138.



### 138. Pietradura and Ivory Knob

C. 1860-The handle shows four pigeons on an urn which are done in a great Italian style, ebony shaft, washer collar and a horn ferrule. The decoration is put together with hundreds of brightly colored glass rods and semi-precious stones, The handle was probably made in a custom Florentine workshop. It has one tiny crack to the mosaic and character lines to the ivory knob-H. 2" x 2", OL. 36"  
\$1,200-\$1,800

### 139. Walrus Ivory Lion

C. 1875-An amber toned handle, full bark malacca shaft and a walrus ivory ferrule. The handle is fashioned in two pieces-H. 6" x 3 1/2", OL. 33 1/2"  
\$700-\$1,200



139.



**140. Large Ivory Elephant**  
Early 20th Century-Very nicely carved pair of elephant heads, ebony shaft and a staghorn ferrule. Probably English in origin and it has delicate undercuts on the supporting plinth-H. 4 ½" x 2 ¼", OL. 39"  
\$2,500-\$3,500

**141. Ivory French Theatre Cane**  
C. 1880-A nicely carved ivory rose which has some chipping to its petals, ring collar, rosewood shaft and a horn ferrule-H. 2 ¼" x 2 ¼", OL. 36"  
\$300-\$500

**142. Exotic Bird Dress**  
C. 1925-A wonderful Art Deco example of an exotic bird with two color glass eyes, lucite beak, ivory collar, massive malacca shaft and a horn ferrule. The head has a pair of eyelets-H. 6" x 4 ½", OL. 36"  
\$500-\$1,000



140.



141.



142.







145.



146.



144.



### 143. Art Deco Folk Art

C. 1930-Carved two piece African American with oversized head, hardwood shaft and a brass ferrule, cane retains its original patina-H. 4" x 3 1/2", OL. 38"  
\$300-\$500

### 144. Nautical Folk Art

C. 1870-A one piece carved folk art shaft with inlaid beads and oval stones. The shaft has a nautical woven rope collar and also is covered in two places by nautical knotting and roping. The name J. H. Shea with black and white beads are inlaid into the shaft and the ring finger on the closed fist has a delicate rose gold ring. The most unusual part of this cane is the ferrule which is a natural claw from some kind of fowl. It retains its original patina and lacquering-OL. 35"  
\$500-\$1,000

### 145. Japanese Ivory

C. 1890-Finely carved oriental bust, gold gilt collar, rosewood shaft and a bone ferrule-H. 1 1/2" x 1 1/4", OL. 37 1/4"  
\$400-\$500

### 146. Nautical Folk

Mid 19th Century-A carved hardwood shaft with a clinched fist, carved nautical collar and a twisted rope shaft. It has original patina and an early brass ferrule-OL. 37"  
\$400-\$700



143.





### 147. Carved Folk Art

Late 19th Century-A one piece folk art cane with turtles, snakes, insects, flowers and a folksy elephant. A stylized African American head for a handle and missing its ferrule-OL 36"

\$300-\$500

### 148. Alligator Skin Dress

C. 1925-A crook handle covered with alligator skin, small gold collar, honey malacca shaft and a horn ferrule-H. 5 1/4" x 6 1/2", OL. 35 1/2"

\$300-\$500

### 149. Cane Handle Mold

C. 1900-An original bronze two piece mold used to pour silver and other metals to form the handle of a cane. A modern casting of what appears to be a wolf accompanies this lot which was made from the mold.

\$300-\$500

150. "Vertical Art-Umberto Barone, Roberta Manker, with forward by Wendell Garrett", subtitled- "The Enduring Beauty of Antique Canes and Walking Sticks"

This hard cover book contains 325 pages with exciting cane photos and descriptions. The pages are 11.5" x 16.75"

\$350

147.



148.

150.



149.







Kimball M. Sterling, Inc.  
(TFL-1915)  
125 West Market Street  
Johnson City, Tennessee 37601  
[kimballsterling @ earthlink.net](mailto:kimballsterling@earthlink.net)  
423.928.1471

Member National Auctioneers Association  
© Copyright 2008 Kimball M. Sterling, Inc.

Photography by James Price

Catalog Design by KT Design, Inc.  
[www.kristaft.com](http://www.kristaft.com)