



Kimball and Victoria
Sterling present an
ANTIQUE CANE
AUCTION

Saturday,
MAY 14TH
11:00 A.M.

*Kimball and Victoria
Sterling present an*

ANTIQUE CANE AUCTION



Saturday,
MAY 14TH
11:00 A.M.
PREVIEW 9:00 A.M.

Live on the internet at
LIVEAUCTIONEERS.COM
Two Time Winner of Best of Show
from the National
Auctioneers Association

Kimball M. Sterling
Auction Gallery
125 West Market Street
Johnson City, Tennessee 37604
kimballsterling @ earthlink.net
423.928.1471

www.AuctionAuction.com

TERMS & CONDITIONS

1. Cash or check. A 20% buyers' premium will be added to the hammer price as part of the sale price for all bidders. Internet bidders will pay 23%. We reserved the right to hold purchases until the buyers checks clears if buyer is not known by us. Bank letter of credit is acceptable.

2. Mail or phone bids are accepted; the firm may require a deposit.

3. Kimball M. Sterling, Inc. has endeavored to catalog and describe the property correctly. All property is sold as is and neither the auction company nor the consignor will be responsible for descriptions, genuineness, provenance or condition of the property. No statement in the catalog made orally at the sale or otherwise shall be deemed to be a warranty, representation, or an assumption of liability.

4. In the event of any dispute between bidders, the auctioneer shall have total discretion to determine the successful bidder, in which his determination shall be final or to re-offer and resale the article in dispute. Title of the item or items purchased by the bidder will pass at the fall of the gavel and declaration of bidder. This is not an approval auction. All measurements are approximate.

5. Principal auctioneer: Kimball M. Sterling #2467. B. Elizabeth Sterling, auctioneer # 5757. Firm Kimball M Sterling Inc. TFL-1915

6. Bidders may bid live on the Internet by visiting <http://www.auctionauction.com>. You may also view the auction at this site and bid by phone.

7. Communications:
Telephone 423-928-1471.
Fax 423-928-2816.
Cellular 423-773-4073, 423-773-4072.
Email kimballsterling@earthlink.net

8. We do not ship protected items overseas but anything else will be shipped by the UPS Store in Johnson City. We can however hold your item till you or a friend visit's the USA and you can take your items as a personal item or we can ship to a friend in the USA.

9. Kimball M. Sterling, Inc. will not be held responsible for bids received on the day of the auction, unexecuted absentee bids, phone bidders not contacted or slow Internet bids. Although we do attempt to get all bids executed problems do occur. There will be no recourse from the bidder. We will not be responsible for items left on our location for over 30 days.

10. Sale will be conducted at 125 West Market Street, Johnson City, Tennessee. 37604. Announcements day of the sale take precedence over pre-sale advertising. Any litigation that pertains to this auction will be conducted in the county of Washington in Tennessee and is agreed upon by registering for this auction.

11. Airport is the Tri-Cities Airport, which is approximately 20 miles from the gallery. Internet catalog and live bidding available at www.auctionauction.com Best Western Hotel: 423-282-2126. A very fine hotel which offers Sterling Auction a discount rate is the Carnegie Hotel 1216 W State of Franklin Rd, (423) 979-6400.

12. Please call for condition report on sale lots or email us. We do send out multiple photos by email of any lot in the auction. By registering for this auction you accept the terms.

13. Parking service is free.

1.



1. Ivory Jumbo The Elephant Cane

Ca. 1890-Substantial ivory knob carved in fine and naturalistic detail as a full bodied circus elephant sitting on a ball, silver collar struck with two obscured hallmarks and an ebony shaft with a stag horn ferrule. The bulk animal is amazingly adapted to the form of the handle and distinguished by beautifully done undercuts as well as a naturalistically rendered rugged skin. Superb condition.

H. 3 ¼ x 2 ¼", O.L. 38 ½"

\$2,500-\$3,500

2. Figural Hard Stone and Enamel Cane

Ca. 1900-The handle is cut of a naturally grey agate to depict an eagle head with a superb feather coat, strong and curving beak and two ruby cabochon eyes set in round and plain yellow gold frames. The majestic bird comes on a wider, engine turned and pale blue enameled silver collar with an applied 18 karat yellow gold two-headed eagle Russian state symbol set with a round ruby cabochon and two framing, multiple grooved silver collars struck with obscured Russian hallmarks. Ebony shaft and a brass ferrule. It has pretty much affinities to the creations of Carl Fabergé and is contemporary to the legendary Objects of Virtue produced in St Petersburg before WWI.

H. 3 ¾" x 2 ¼", O.L. 36 ¼"

\$6,000-\$8,000

2.



3.



3. Ivory Lion Cane

Ca. 1880-Fine grained ivory handle with a powerfully conceived and sophisticated study of a walking lion, malacca shaft with a wide and plain silver collar struck with two obscured hallmarks and a metal ferrule. This glorious portrait of the King of the Jungle brilliantly survived the test of time and is praised by long and careful use.

H. 5" x 2 1/4", O.L. 35 1/4"

\$1,600-\$2,500

4.

4. KPM Porcelain Indoor Cane

Ca. 1860-Porcelain knob well modeled and naturalistically colored painted in finest micro detail to depict the bust of a girl with a beautiful face and tied hairdo and a yellow and blue band around her left shoulder, ebony shaft with a turned silver collar and a horn ferrule. This knob reflects all the seductive powers of the vitrified material and is porcelain art at its very best.

H. 2 1/4" x 2", O.L. 38 1/2"

\$1,000-\$1,500



5. Automated Monkey-Jockey head Cane

Ca. 1900-Fruitwood handle naturalistically carved in the shape of a humanized monkey's head wearing a blue and white colored jockey's cap, malacca shaft with a bound braided ribbon collar and a metal ferrule. When the tiny lever under the chin is depressed the monkey sticks out a long red tongue and simultaneously rolls his eyes which change their color from blue to red. The operating mechanics are concealed in the head and work perfectly. Dark grown age patina.

H. 3 1/2" x 2 3/4", O.L. 35 1/2"

\$1,400-\$1,800



5.



6.

6. Silver and Enamel Noble Man's Cane

Ca. 1890-L-shaped silver handle of a striking ergonomic shape embellished with an engine turned and vivid red enameled collar and personalized with the feathery initials "AM" under a crown engraved on the oval widening and beautifully hollowed back. Ebony shaft and a horn ferrule. This handle is truly the work of a master artisan's hand and is struck with two hallmarks beside a "G.A.S." for the celebrated Georg Adam Scheid from Vienna, one of the most recognized silversmiths and enamellers worldwide. It was used, shows minor bumps and a hardly noticeable flake on the enamel collar but still epitomizes the artistic eclecticism of the Imperial Capital and distills much of the spirit of this classy and highly luxurious period.

H. 3 1/4" x 2 1/2", O.L. 36"

\$600-\$800



8.

8. Automated Fox head Cane

Ca. 1900-Fruitwood handle naturalistically carved in the shape of a humanized fox head wearing a Tyrolean hat with a feather, malacca shaft with a wider tooled leather collar and a metal ferrule. The lower jaw is hinged and can be articulated with the lever under the chin. Once depressed, the fox opens his mouth to show a red tongue framed by a row of ivory teeth and simultaneously rolls his eyes which change their color from blue to yellow. If the lever is suddenly dropped, it produces a penetrating noise, resembling the yawning of the animal. The operating mechanics are concealed in the head and, without doubt a tour de force of ingenuity, they still work perfectly.

H. 3 1/2" x 3", O.L. 36 1/4"

\$1,600-\$2,500

7. Japanese Export Damascene Art Cane

Ca. 1890-Straight damascene steel handle densely decorated with 24 karat yellow gold and silver wire inlay. The ball top shows a dragon in the clouds while its long and tapering stem is entirely covered by a continuous panel with two doves flying above lilies and vine jade. The whole is enclosed within multiple swirling floral trellises and multiple framing borders. Ebony shaft and a metal ferrule. -For a similar cane and additional information, see "The Pearson Cane Collection", by Youssef Kadri, page 107.

H. 3 1/2" x 1 1/4", O.L. 36 3/4"

\$800-\$1,000



7.



9.

9. Lapis Lazuli Lion Dress Cane

Ca. 1900-Substantial T-shaped lapis lazuli handle carved to depict a prone lion with inset red stone eyes, possibly ruby, deep black ebony shaft and a horn ferrule.

The artistic approach is in the Roman statuary style with excellent proportions and a penchant for simple yet strong representation.

With its opulent mane and determined stare, the portrait captures all the majesty of the King of Animals and is admittedly a visually powerful and seducing work of skill. The lapis lazuli, Carl Fabergé favorite stone, is of the finest deep blue and uniform color and emphasized

by a custom made, wide and finely engraved silver collar with two matching, expertly repaired enamel rings and repeating open frames displaying a braided gold wire background. The hallmarks are obscured but their outlines still hint to a Scandinavian origin. It is contemporary to the legendary Objects of Vertu produced in St Petersburg before WWI.
H. 5 ¼" x 2 ½", O.L. 38"

\$6,000-8,000

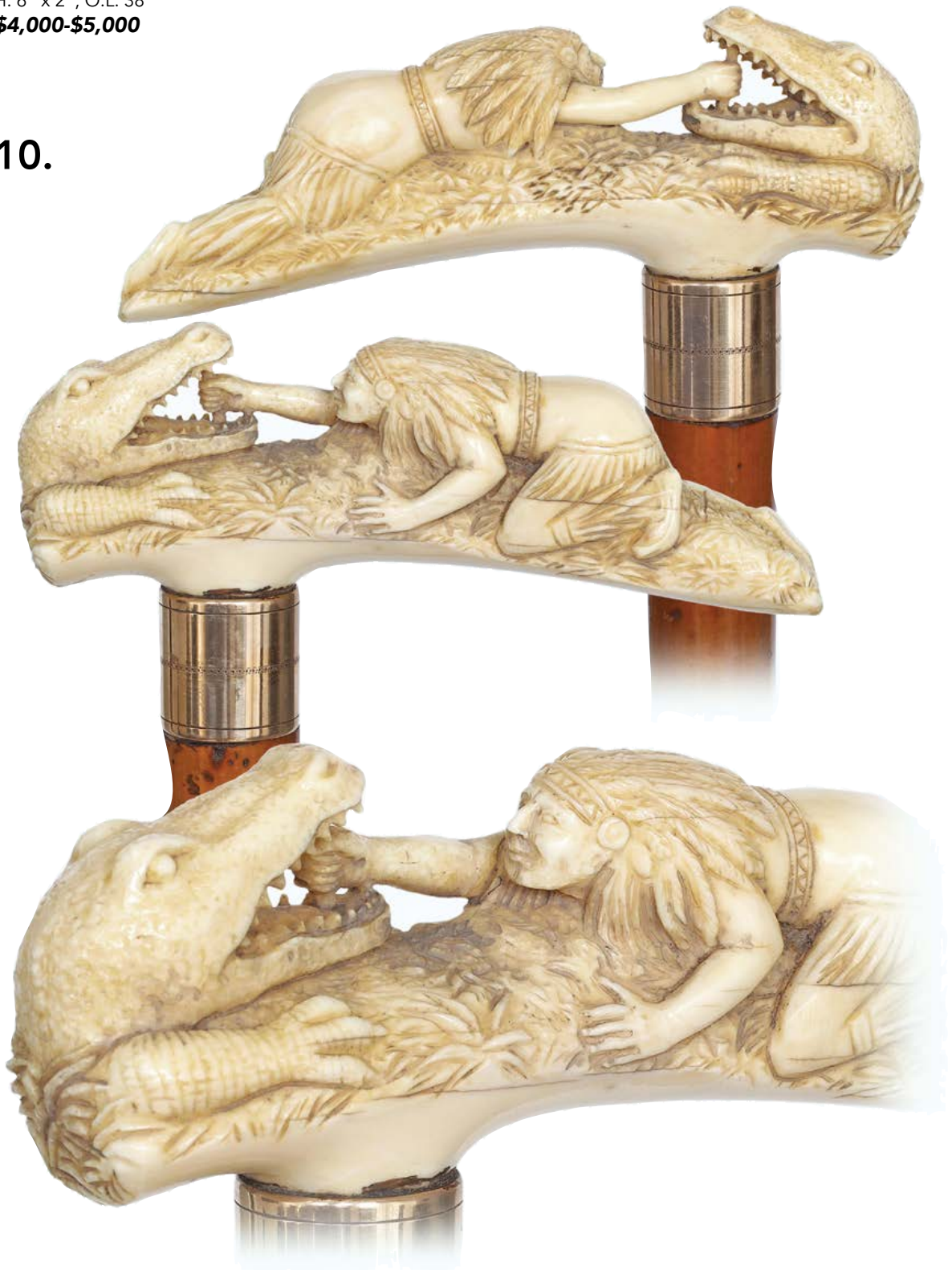
10. Spectacular Walrus Ivory Native American Indian Cane

Ca. 1880-Large walrus ivory handle carved to depict an American Indian defeating an alligator, well-dressed malacca shaft with an American gold collar and a metal ferrule. The rendering respects the traditional native Red Indian iconography and sport a multitude of fine details and feathers, starting on top of the head and cascading the wearer's necks to continue with a fringed skirt and soft leather shoes.

H. 6" x 2", O.L. 38"

\$4,000-\$5,000

10.



11.

**11. American Gold
Rush Quartz Cane**

Ca. 1860-Substantial and well-proportioned silver knob fashioned in the customary pommel shape with a domed top set with a larger and round gold quartz stone in a gold bezel. The body tapers in a well-designed octagonal configuration terminating in a raised ring followed by a wider, round and plain gold collar. The knob is embellished with fine hand engravings in various trailing patterns on its plain upper and lower parts framing its central body with differently decorated panels alternating with "K, T, H" monogrammed ones followed by a fourth with three, linear connector circles. The gold quartz inlay itself is top grade, of bright white color and with compact and rich gold matrix.

H. 2 ½" x 1 ½", O.L. 37 ½"

\$6,000-\$8,000



12. American Gold Presentation Cane

Ca. 1890-Gold rolled pommel-shaped knob densely hand chased and decorated in high relief with repeating panels of rich scrollwork and flowers and personalized with a feathery presentation engraving on the top "C.F.K./and/R.J.F./to/R.B.Brooks". Well figured snake wood shaft of an intense, brilliant and natural red-brown color and a horn ferrule.

H. 2" x 1 1/4", O.L. 36"

\$500-\$700

14.



13.

13. Ivory Monkey and Vine Cane

Ca. 1890-Longer handle fashioned of one substantial piece of vine with an adequately grown, widening top, malacca shaft and a 3" tall stag horn ferrule. The handle is embellished on the side with an applied ivory monkey climbing on its naturally knobby surface and on the top with flush set ivory inlay. The furry animal is masterly rendered with a charming stunned expression on the face.

H. 8 1/2" x 2 1/4", Monkey 3 3/4" x 1 1/2", O.L. 35 1/2"

\$1,500-\$2,000

14.



14. Hardwood and Ivory Satirical Humanized-Monkey Cane

Ca. 1880-Sizeable hardwood and ivory handle carved to depict a gentleman monkey reading the famous Parisian newspaper "le Figaro", knobby kongo wood shaft with a white metal collar and brass ferrule. The monkey is impressive both in term of scale and in the naturalism of the carving and draws additional appeal from the material combination and contrasting colors. Probably inspired by one of Jean Ignace Isidore Grandville drawings. H. 5 1/2" x 2 1/2", O.L. 36"

\$1,000-\$1,400

15. Superior Gold American Presentation Cane

Dated 1886-Mushroom shaped gold rolled knob with a stem fashioned in an octagonal configuration with four different panels of floral and scrollwork alternating with four plain ones and a widening round top richly hand chased en suite and engraved "A.M.S. 1886". Rosewood shaft with a horn ferrule. The knob is struck with the stamp "RFS & Co." for Rest Fenner Smith & Co. makers of fine gold and silver-headed walking sticks, salesroom at 701 Broadway, New York. It survived in mint condition and with its entire sparkle.-The description found in the Boston Post provides a good idea on how these canes were made: The gold in the heads of the cane is of 14-karat fineness. It is rolled into sheets, cut to the desired size and soldered in a conical tube, then placed in a sectional steel chuck or form, which admits of its being drawn into the exact shape of the finished head.

H. 2 1/4" x 1 3/4", O.L. 38 1/4"

\$600-\$700

15.





16.

16. Hard Stone Dress Cane

Ca. 1900-Large and well-proportioned Opera shaped jasper handle of a hardly encountered opaque and uniform structure and dark red color on a well figured and richly hued rosewood shaft with a braided silver wire collar and a horn ferrule. There is a lot of research into the shape of the handle to increase its ergonomics with a slightly oval hand rest and hollowed tips. It belongs to the most desirable upscale jewelry objects or Virtue and has possible Russian ties. Despite a great fragility, it survived intact and with its entire and original sparkle.

H. 5 ¼" x 2 ½", O.L. 36 ½"

\$1,600-\$2,200

17. Ivory Day Cane

Ca. 1880-Substantial L-shaped ivory handle carved in high relief with two hands emerging from frilled cuffs, malacca shaft with an elaborate belt and buckle collar and an ivory ferrule. The depiction of the hands into one another can be seen as symbol of a happy event or better a token of love. Exquisite, this cane conveys harmony and plays all the magic of blameless ivory and its sensual and tactile touch. H. 6 ¾" x 3 ½", O.L. 33"

\$1,200-\$1,600

18. Figural Dress Cane

Ca. 1880-Silver plated bronze figure modeled, cast and finely hand chased to depict a kissing young pair on one side and a spying older man on the other, ebony shaft and a long horn ferrule. The motif is thought to have been inspired by the classical poem "The Kiss" by the German writer and statesman Johann Wolfgang von Goethe 1749-1832.

H. 3 ½" x 1 ¼", O.L. 34 ¼"

\$1,000-\$1,400

17.



18.



19.

19. Meissen Porcelain Cane

Ca. 1880-Substantial egg shaped porcelain knob with Höroldt style Chinoiserie painting, malacca shaft with a turned shaft and a metal ferrule. The multicolor enameled painting is done in micro detail with a broad palette of colors and emphasized with three small "Pourpre Camille" vignettes within rich gold moriage.. Its signature logo, the crossed blue sword marks of the arms of Saxony, was introduced in 1720. H. 3 ¼" x 2 ½", O.L. 35 ¼"

\$1,500-\$2,000



20.

20. Black Boy and Alligator Stag Horn Cane

Ca. 1900-Large stag horn handle carved with a Black Boy catching an alligator by his tail, malacca shaft with a finely engraved silver collar and a metal ferrule. The playful character of the boy is apparent and black highlights add to his charm, while the wild nature of the reptile is beautifully rendered with an impressive thick and scaly skin. A superb example of the African American Black Boy, this cane is endowed with a poetic license and praised by an ennobling wear and a rich age patina. H. 5 ¼" x 2 ½", O.L. 34 ¾"

\$1,500-\$2,200



21.

21. Fabulous European jeweled Hard Stone Cane

Ca. 1900-Substantial Milord shaped deep black onyx knob fashioned with 20 repeating ridges joining on the top under a circular gold shield set with round, brilliant cut diamonds centered by a blue moon stone cabochon and extending on the bottom with a wide 18 karat yellow gold collar which takes over the alignment of the ridges in identical panels each set with two rows of 14 round, brilliant cut diamonds. Well-dressed select malacca shaft with a high ridge and a steel ferrule. The description of the cane would not be complete if one does not mention a pair of discreet, black horn rings that ensure a smooth junction between the knob and the shaft and two black horn eyelets with braided textile loops. Formerly the property of an Arab head of state, it came few years ago in private hands after political changes in that part of the world.

H. 3 ¾" x 2 ¼", O.L. 37"

\$10,000-\$12,000



22.

22. American Dress Cane

Ca. 1900-Gold rolled L-shaped handle of a rarely encountered large size densely hand chased with rich scrollwork and a blank cartouche on a 3 1/4" tall cylindrical stem with mother-of-pearl paneled veneer terminating with a matching, also gold rolled, collar. It is a superb example of a never again reached American skill and craftsmanship and comes on an ebony shaft with a horn ferrule.

H. 6 1/2" x 4 1/4", O.L. 38"

\$600-\$800

23. Silver Cloisonné Enamel Bishop Staff

Ca. 1900-Huge silver cloisonné enamel knob decorated with eight repeating vertical foliate panels on the side and a matching round arrangement centered by a cross on the domed top. Single piece, straight and tapering ebony shaft with a 4" metal ferrule. The painstakingly arranged enamel cells are filled with harmoniously blending blue, turquoise and white enamel with little splashes of green and red and additional royal blue on the top. It survived in good condition spare for minor dings and repairs to the enamel fully in keeping with its age.

H. 5 3/4" x 2 1/2", O.L. 51 1/2"

\$1,000-\$1,500



23.

24.



24. Ivory Religious Cane

Ca. 1870-Large ivory handle fashioned of a single piece of fine grained select material in a stretching pommel shape and finely carved with the Blessed Virgin Mary and her son Jesus on one side and two cavorting angels on the other. Both panels are enclosed within rich Baroque framing and naturalistically executed at the highest level of miniature craftsmanship. Malacca shaft and a horn ferrule.

H. 6" x 1 3/4", O.L. 39"

\$3,000-\$4,000

25.



25. Silver Gilt Bishop Staff

Ca. 1900-Massive reversed pear shaped silver gilt knob hand chased with three beaded twirling bands on the side of a fourth wider one with ornamental foliation on the side and with the double-headed eagle on the top. Single piece, straight and tapering ebony shaft heeled with a rubber ferrule. Rarely encountered in private collections, this imposing, majestically headed staff must have been the special dignity of a bishop or high ranking abbot. It was obviously used and survived in superb condition. The double-headed eagle is most commonly associated with the Byzantine Empire.

H. 4 3/4" x 2 1/4", O.L. 49 1/2"

\$1,000-\$1,500



26. Dual Purpose Silver and enamel Cane

Ca. 1890-Circular silver knob with an integral grooved collar finely engraved and enameled with a polychrome gallant scene, stepped malacca shaft and a metal ferrule. The rather flat knob is hinged and flips open to show a gilt cavity with an unidentified hallmark which was probably intended for snuff tobacco or pills. Luxury pure and a first rate fragile legacy this cane has the crossover appeal of associating with more than one collecting field to boost its value.

H. 1 ½" x ¾", O.L. 32 ½"

\$700-\$900

26.

27.

27. Hard Stone and Guilloche Enamel Dress Cane

Circa 1890-Plain rose quartz ball topping a substantial and tapering silver plinth totally engine turned with a wavy pattern and transparent pale green and pink enameled. The enamel is furthermore emphasized with delicate 24 karat yellow gold dots and hair-line decoration. Better than the best, this handle is truly the work of a master artisan's hand, in the taste of the celebrated Georg Adam Scheid from Vienna, one of the most recognized silversmiths and enamellers worldwide. Intact and well presented on an adequately selected deep black ebony shaft with a horn ferrule.

H. 4 ½" x 1 ¾", O.L. 37 ½"

\$1,200-\$1,800



29. Figural Marine Cane

Ca. 1850-Entirely fashioned of materials from the ocean, this marine cane features a sperm whale tooth handle and a single piece plain whale bone shaft. The huge tooth handle was left in its natural shape and decorated with a delicately alluded but strong bird's face at the front. Dark baleen inlay in the eyes adds to its dynamics and manages both abstraction and realism. The substantial shaft itself is turned of whale jaw or pan bone in a plain and gently tapering shape and distinguishes with a top diameter of nearly 1 1/2" and the singular feature of a signature "Piper" engraved 6 1/2" down from the joining point with the handle.

H. 7 1/4" x 2 3/4", O.L. 34 3/4"

\$4,000-\$5,000



29.



28.

28. Top Rate Marine Cane

Ca. 1860-Sizeable whale tooth knob well carved in a seldom encountered high relief as a fist with a buttoned cuff and a coiled snake with a large head and forked tongue, black painted malacca shaft with a pair of white metal eyelets at the top and two other smaller similar ones at the bottom. Imbued with the sensitivity and skill of the whaler artist and his innate aesthetics, this cane is "Marine Art" at its very best. Furthermore, it is well preserved, with a well-used surface and displays throughout a great feel of age.

H. 3 3/4" x 2 1/2", O.L. 37"

\$3,000-\$4,000



30.

30. Ivory Globe Cane

Ca. 1890-Ivory terrestrial globe handle accurately carved in scrimshaw technique with the continents and the oceans and their related appellations, malacca shaft with a well chased metal collar and matching ferrule. The cane survived in good condition and with a superb luster to the ivory handle. By tradition, similar canes belonged to retired captains with great marine careers. H. 2 ¼" Diameter, O.L. 36 ¾"

\$1,000-\$1,500



31.

31. Tortoiseshell Dress Cane

Ca. 1890-Solid tortoiseshell handle of a honey color and rarely encountered transparency fashioned with a pistol shaped grip and a stretching faux-sprig stem, mahogany shaft with a grooved silver collar and horn ferrule. Rarely encountered in such seducing colors and perfect condition, this cane radiates all the magic of the noble material of the sea and above all quality.-Tortoiseshell is an ornamental material obtained from the curved, horny shields forming the shell of the Hawksbill or of the Caretta turtle.

H. 8" x 2 ½", O.L. 38 ¼"

\$800-\$1,200

32.

32. Ivory Marine Cane

Ca. 1870-Ivory ball knob carved in the shape of a turk's head knot, Slim turned and ribbed ivory collar, rosewood shaft and a brass ferrule. The knob is quintessentially nautical, displaying the sailor's knowledge and love of rope-work.

H. 1 ¾" Diameter, O.L. 32"

\$500-\$700



33.

33. Figural Marine Cane

Ca. 1850-Larger sperm whale tooth knob carved to depict, what seems to be, a seagull on a plain and tapering single piece whale bone shaft with a coconut shell washer flush set at the top with diameter close to 1" and a metal ferrule of 4 ¼" length. The bird of the coastal areas is superbly rendered in a stylized shape and emphasized with delicately engraved feathers and dark baleen inlay in the large and round eyes.

H. 5" x 3", O.L. 35"

\$4,000-\$5,000



34. Shagreen and Silver Cane

Ca. 1890-A rarely encountered Anglo-Colonial material cane with a very large, well chased and monogrammed "E.J.C." silver knob and its curio shaft fashioned of a *Dasyatis Sephen* Sting Ray tail with a brass ferrule. The fluting tail shows a prickly scaled and sharply toothed structure of a light muddy-gray-green color and boasts a 6" tall venom-secreting, barbed spine secured by a metal ring around its tip.

H. 2 ¼" x 1 ¾", O.L. 37"

\$1,400-\$1,800



34.



35.

35. Ivory Mounted Umbrella

Ca. 1880-Giant umbrella with an ivory handle in the shape of a right fist holding a horn which can be used and, when blown, produces a penetrating sound. The central tube, runner, top notch and ferrule are made of solid brass while the stretchers are forged steel and the ribs baleen. A most unusual sturdy and lavish construction hints to a bespoke singular example which can withstand windstorms. The green colored covering with brown trimmings as well as the ivory horn indicate that this umbrella was intended for sporting activities. It survived intact.

H. 2 ¾" x 2 ¼", O.L. 39 ¾", Open diameter 52"

\$800-\$1,200



36.

36. Silver and Ivory Chryselephantine Cane

Ca. 1880-L-shaped silver handle chased and engraved with opulent Baroque scrolls and shells and embellished with a prone dog with an ivory head at the front over an escutcheon with the personalizing engraved initials "HM" of its first owner. Ebony shaft and a metal ferrule. Way out of the ordinary, this singular cane epitomizes the artistic eclecticism of the Imperial Viennese days and exudes the essence of luxury. It is authenticated by two small hallmarks.

H. 4" x 4 1/4", O.L. 36"

\$1,200-\$1,600



37. Walrus Ivory Fist Cane

Birmingham hallmarks 1898-L-shaped walrus ivory handle carved at the front with a left fist emerging from a frilled collar and engraved on the side "F.T. STOTT.", elaborately chased silver collar with a full set of clear Birmingham hallmarks, ebony shaft and a metal ferrule. Quality cane with an unusual and good representation of the hand and praised by a throughout well used surface.

H. 3 1/2" x 1 1/2", O.L. 34 3/4"

\$600-\$800

37.



38.

38. Ivory and Silver Day Cane

Ca. 1900-Large ivory Milord knob turned in a plain, classic shape and set at the top with a flower arrangement depicting an owl face, select malacca shaft with a dark rosewood collar and a stag ferrule. This French "Golden Age" cane exudes quality and is emphasized by a superb lustrous surface that has triumphantly survived an entire century.
H. 2 ¾" x 1 ½", O.L. 38 ¾"

\$700-\$1,000



39.

39. Ivory Lion Cane

Ca. 1900-Substantial and well-proportioned ivory crook handle fashioned of a single piece of select, fine grained material and carved in low relief with a lion. The rendering is fluid and vigorous and proclaims the entire spirit of the King of the Jungle. The handle has a perfect fit to the hand and blends perfectly into a dark and richly figured rosewood shaft with a stag horn ferrule.

H. 4 ½" x 3 ¼", O.L. 36"

\$1,200-\$1,600



40.

40. Silver Dog Head Sword Cane

1896-Plain silver crook handle embellished at the front with a large, beautifully modeled, cast and finely hand chased dog head and his belted collar. The handle is struck with an "84" between two Russian silver hallmarks just above the integral, raised and delicately tooled collar. Ebony shaft and a white metal ferrule. So-far, so-good, however, what makes this cane more desirable, is that it is a sword cane with a 19 1/4" long and tempered steel blade with a blood groove on each side which holds in its chamber by simple friction.

H. 5" x 4 1/4", O.L. 35 1/2"

\$1,500-\$2,000

41.



41. Ivory Venus Cane

Ca. 1890-Substantial ivory handle carved with a Venus lying in a bursting egg, ivory collar turned with multiple rings, malacca shaft and a metal ferrule. Possible ties to the Easter Egg and a so-far unseen Art Nouveau attempt to replace the Rabbit, Anglo-Saxon goddess Eastre's earthly symbol of fertility, with a Venus, this cane is pure beauty and grace and with an overall effect of subtle eroticism.

H. 3" x 2 1/2", O.L. 35 3/4"

\$2,500-\$3,500



42.

42. Early Ivory Sword Cane

Ca. 1800-Longer ivory handle turned with a round top and stretching and gently angled stem on a matching collar with two integral beaded rings, malacca shaft with a white metal collar and a 3" long white metal ferrule. The handle detaches with a straight pull to reveal a 16" tall flat forged, angled, slightly tapering and ending with a pointed tip steel blade. The blade is embellished in great part with a blue metal finish and ornate with engraved and gilt decorations.

H. 3 1/4" x 1 1/4", O.L. 35 1/4"

\$800-\$1,000

43.



43. Silver Figural Art Nouveau Cane

Ca. 1900-Large L-shaped silver handle beautifully modeled, cast and finely hand chased to depict the head of a beauty with two flowers in her long hair. Her pure face with a languid expression combines to perfection sensuality and innocence and gives the impression that she is dreaming with wide opened eyes. The flowing curves and voluptuous imagery shown here are a celebration of Art Nouveau, A sculpture to wear, the handle is struck with two obscured hallmarks which betrays through a unique outline an Austrian origin and comes on an ebony shaft.

H. 4" x 3 1/4", O.L. 34 1/2"

\$900-\$1,200



44.

44. Erotic Nude Cane

Ca. 1890-A carved ivory bent Venus drying her hair possibly inspired by the classic motif of "Aphrodite taking her bath", stepped malacca shaft and a stag horn ferrule. The depiction is a celebration of feminine beauty and rendered in the "fin de siècle" taste with an apparent tactile sensuality. Obviously used over a longer period, this cane enjoys the merits of a warm and uniformly grown age patina. H. 4 ¼" x 2 ¾", O.L. 3 ½"

\$1,500-\$2,000

45. Ruby Dress Cane

Early 1900s-Large, round and precious hard stone fuchsite knob of a pale green color with naturally embedded red ruby crystals, rosewood shaft with a grooved yellow metal collar and a horn ferrule. A plain and gently curving surface helps revealing the striking natural structure of the stone and its striking mixed colors and lends it a desirable smooth feel to the wearer's hand. Possibly Viennese. H. 2 ½" x 1", O.L. 37 ¾"

\$400-\$600



45.

46. Ivory Owl Cane

Ca. 1890—Large ivory handle fashioned of a single piece of blameless and fine grained material and carved to depict a larger owl feeding two owlets under its wings, malacca shaft with brass eyelets and a 2 ¾" tall stag horn ferrule. The carving is precise and renders well the owl's trademark flat faces with large forward-facing eyes and conspicuous circle of feathers around each eye and hawk-like beaks. Handle and shaft compliment brilliantly each other in function, shape and color.

H. 3 ¾" x 2 ½", O.L. 33 ¾"

\$1,600-\$2,200

46.



47.

47. Gold Mounted Exotic Material Cane

Ca. 1870—Straight and tapering cane fashioned of the twisted stalk of a Coco de Mer baby leaf graced by a flush adjusted yellow gold cap (tested for 18 karat) centered by a dark green heliotrope jasper engraved with three gothic initials. The light weighted but extremely stiff and durable stalk has two eyelets, a white metal ferrule and shows a fibrous structure with a natural and evenly faded brown color.

H. 1 ½" x 1", O.L. 32 ¼"

\$600-\$800



48.

48. Lapis Lazuli Dress Cane

Ca. 1900-Plain Lapis Lazuli ball knob and its cloisonné enamel collar on an ebony shaft with a metal ferrule. The blue color of the ball with lots of golden dust and few whitish tufts give it the appearance of a sidereal globe with sparkling stars and clouds and make of it a heaven of a cane. While the ball and its collar survived intact, the shaft shows an older repaired crack towards the bottom. H. 1 $\frac{3}{4}$ " Diameter, O.L. 36 $\frac{1}{4}$ "

\$600-\$700

49.



49. Gold Nobleman's Cane

Ca. 1800-18 karat yellow gold knob fashioned in a well-proportioned classic shape with a tapering body and slightly domed round top entirely engraved in the Renaissance with the finest scrolls and fitted with an integral ring collar chased en suite. Well-dressed malacca shaft and a horn ferrule. H. 1 $\frac{1}{2}$ " x 1", O.L. 37"

\$700-\$900

50. Early Ivory Figural Cane

Ca. 1760-Ivory ball knob on a sizeable, vertical stem carved in very high relief with a lion face on its malacca shaft with a reeded silver collar. The fabled, gargoyle like appearance of the lion is conforming to the taste of the George III period and an almost totally rubbed inscription on the back of the handle as well as the surface of the shaft attest to the estimated age of nearly 250 years. H. 4" x 2 1/4", O.L. 31"

\$800-\$1,000



50.

51. Early Gold Dress Cane

Ca. 1840-Plain gold cap engraved with large "LG" initials on the top and struck with the French eagle head gold hallmark to the rim, deep black and close pored ebony shaft and a metal ferrule. -Epitome of grace and elegance, this cane distills cane beauty to the essence, and, despite of two centuries of age, is still well suited for an exclusive stroll.

H. 1/2" x 3/4", O.L. 37 1/4"

\$300-\$500



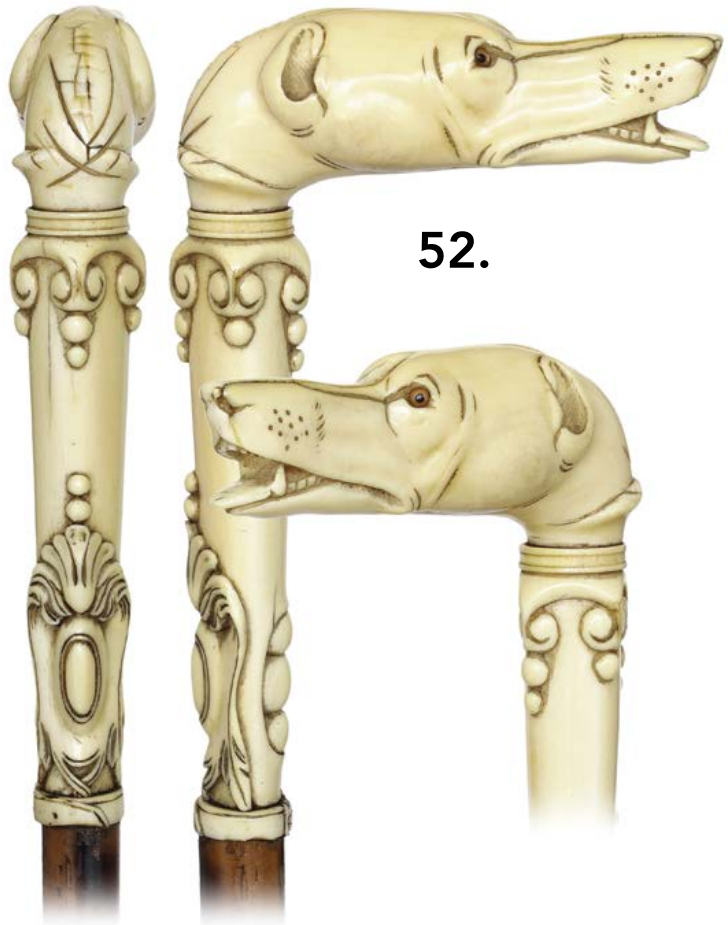
51.

52. Ivory Greyhound Cane

Ca. 1890-A well carved ivory greyhound head handle in an appealing stylized shape and embellished by two color glass eyes. The handle comes on an elaborately designed 5 1/4" tall ivory plinth with two turned collars and a malacca shaft with an ivory ferrule. Top rate quality and praised by an emphasizing, intense and age grown patina.

H. 6 3/4" x 4 1/2", O.L. 31 3/4"

\$1,600-\$2,000



52.



53.

53. Early Ivory & Ebony Piqué Cane

Ca. 1800-Plain turned ivory knob in the customary classic shape topping an ebony shaft fashioned in an octagonal configuration and entirely embellished with extensive silver piqué and twist wire inlay. While the alignment of the various panels as well as the overall is ample evidence to French parentage, the custom silver ferrule, which takes over the octagonal shape of the shaft in a seamless flush setting, is license to top rate canes from Paris.

H. 1 ½" x 1", O.L. 35 ½"

\$800-\$1,200



54.

54. Ivory Equestrian Whip Cane

Dated 23. IV. 1877-Substantial and masterly carved ivory horse leg and hoof handle on a flexible shaft totally covered with braided cords in a repeating four wire pattern. The handle is embellished on one side with the integral and high relief coat of arms of its first owner and on the with his "IP" initials in the hoof with applied diamond shaped silver nails. The collar itself is in the shape of a wrapping belt with buckle and engraved with a German Student presentation "E. Kern s/l F. Prieger z.fr.Er. 23. IV. 1877". Better than the best.

H. 5 ¼" x 2 ¼", O.L. 39 ½"

\$1,200-\$1,600

55.

55. Ivory Heidelberg Style Cane

Ca. 1870-Long and stretching ivory Ziegenhainer carved in high relief with a hunting allegory, well chased silver collar, ebony shaft and a stag horn ferrule. The depiction is remarkable, rich in symbolism and, above all, gives us insight into the values of its day. Furthermore, the handle is personalized with engraved initials and distinguishes with a rarely encountered and beautiful light bleached surface.

H. 5 ½" x 2 ¼", O.L. 40"

\$800-\$1,200



56.



56. Jeweled Gun Metal Cat Cane

Ca. 1890-Gun metal flattened knob with a basic blue finish and a plain silver ring collar embellished with an engraved cat set with half pearls, rose diamonds and a ruby, ebony shaft and a metal ferrule. This cane is discreet splendor and fancy feline art at its best. Almost flawless.

H. 1 ½" x 1 ¼", O.L. 37"

\$400-\$600



57.

57. Ivory Hatching Chick Cane

Ca. 1890-Substantial ivory handle carved of one piece of fine grained material to depict a cute baby chicken hatching from its egg and seeing the world for the first time, rosewood shaft with a wider silver collar engraved with feathery initials. Exceptional quality and rarity sets the tone in this eye-catching cane which survived in great condition spare for a tiny crack in the silver collar. H. 3 ¼" x 2 ¼", O.L. 33 ½"

\$1,200-\$1,500

58.

58. Silver Wood Grouse Cane

Ca. 1890-Heavy silver L-shaped handle with a plain body and a wood grouse also called heather cock head at the front, rosewood shaft and a horn ferrule. A pair of inset red garnet eyes adds to its liveliness. This cane is in good condition spare for minor ding on the back shoulder totally in keeping with its age and does not in any way detract from its beauty. Viennese hallmarks beside two unidentified maker's marks.

H. 4 ¼" x 3", O.L. 33"

\$600-\$800



59.

59. Ivory Roster Cane

Ca. 1890-Large ivory handle fashioned of fine grained material to depict a rooster with prominent wattle and comb. Strong emphasis was placed by the carver on the proud character of the animal and accents its presence by a fine detailed feather coat. This cane aged well with a glazed and warm surface to the ivory and a great patina to the shaft. French.

H. 3" x 3", O.L. 31 1/2"

\$1,500-\$2,000



60.

60. Ivory Figural Cane

Ca. 1860-Ivory knob turned in vertically stretching shape with an integral collar and a wider central panel engraved with a stag and two deer against a forest background. Malacca shaft with pierced eyelets and a steel ferrule. This cane can be safely attributed to the first generation of the ivory carvers from the town Erbach in Odenwald-Germany who worked under the guidance of the famous artist Christian Kehrer. Also it was obviously used over a very long period, suffered some damage to the fragile feet of the wild animals and shows extensive wear.

H. 3" x 1 1/4", O.L. 36"

\$600-\$800



61.



61. Hard Stone Dress Cane

Ca. 1900-Carnelian ball knob of a captivating red-orange color and glassy translucent structure that brings to mind the fire of a sunset, close pored rosewood shaft with an Art Nouveau silver collar and a horn ferrule. Carnelian is known as a stone of motivation and endurance, leadership and courage and has protected and inspired throughout history. H. 1 $\frac{3}{4}$ " Diameter, O.L. 37 $\frac{3}{4}$ "

\$300-\$400

62.



62. Silver Dress Cane

Ca. 1900-Opera shaped silver handle delicately chased in the Baroque taste with a different panel of flowers within rich scroll and shell framing on each side and engraved with the birthday presentation "s.l. Oheim zum Geburtstag. O.B." on the top and elaborate initials on the backside. Dark rosewood shaft and a metal ferrule. High end silver artistry and authenticated by full set of German hallmarks beside a "GESCH." for "Patent" and an unidentified maker's mark.

H. 3 $\frac{3}{4}$ " x 2 $\frac{3}{4}$ ", O.L. 36 $\frac{1}{4}$ "

\$500-\$700

63. Ivory Lizard Cane

Ca. 1880-Substantial ivory handle fashioned in a well-proportioned L-shape with a slightly curving hand rest and deeply carved with an accurately rendered lizard with a scaled skin and clawed feet, richly colored rose wood shaft with a plain white metal collar and matching horn ferrule. Way out of the ordinary in size and quality and personalized with beautifully engraved initials, this cane is representative for a period where the perfect gentleman would wear only customized accessories.

H. 4 ½" x 2", O.L. 36 ¾"

\$700-\$900



63.



64. Peculiar Jewish Character Cane

Ca. 1900-Figural stag horn handle carved to depict a man's head with a long nose out of proportions. The essence of the head is exaggerated and distorted to create an easily identifiable visual likeness and marked by a pair of inset glass eyes. Malacca shaft with iron collar and bone and white metal ferrule. Satirical type of folk art thought to have an anti-Semitic background.

H. 5 ½" x 3", O.L. 33 ½"

\$600-\$800

64.



65.

65. Silver Day Cane

Ca. 1890-Large L-shaped silver handle with a slightly arched hand rest and pointed tip totally engraved with scrolls, floral and butterflies and personalized with the initials of its first owner "EK" above the date "1894". Pepper bamboo shaft and a metal ferrule. This wonderful example of Viennese art is praised by careful use and authenticated by three Austro-Hungarian hallmarks on the handle's neck.

H. 3 1/2" x 2 1/2", O.L. 36"

\$400-\$500



66.

66. Stag Anti-Semitic Folk Art Cane

Ca. 1900-The handle fashioned of an adequately grown crown stick with a round rose and a horizontally stretching tine and carved to depict a man's head with an unhappy expression on a face marked by a long nose out of proportions. Pepper bamboo shaft with plain silver collar and metal ferrule. The essence of the head is exaggerated and distorted to create an easily identifiable visual likeness and emphasized by two inset glass eyes.

H. 4 1/2" x 2", O.L. 34 1/2"

\$600-\$800

67.

67. Silver Art Nouveau Dress Cane

Ca. 1900-Large and well-proportioned silver handle fashioned in a basic Derby shape and decorated with flowing foliates, ebony shaft and a white metal ferrule. Furthermore, the handle is discreetly engraved with a long presentation „Techniker Verein/Oldenburg/II Preis/ Wettbewerb für Vereinsschrank// E. Bruns“, and authenticated with a full set of German and maker's hallmarks.

H. 5" x 3 1/2", O.L. 34 3/4"

\$600-\$900



68.

68. Stag horn Satirical Cane

19th Century-A carved portrait of a man with a long nose out of proportions and lengthen, pointed ears. The essence of the head is exaggerated and distorted to create an easily identifiable visual likeness and discreetly monogrammed "KD" on the downside of the nose. Fruitwood shaft with a metal collar and a metal ferrule. Anti-Semitic background.

H. 4" x 2 1/4", O.L. 39"

\$600-\$800



69.

69. Silver Art Nouveau Day Cane

Ca. 1900-Well-proportioned silver Milord knob hand chased and engraved with encircling flowering poppies, rarely encountered white ebony shaft with dark veins and a metal ferrule. Naturalism and fantasy combine here to a high degree and raise the cane art to the level of fine art. French origin.

H. 2" x 1 1/4", O.L. 35 3/4"

\$300-\$500

70.

70. Ivory Elephant Cane

Ca. 1890-Single piece ivory knob carved in fine and naturalistic detail as a full bodied foraging elephant on an integral stone plinth, mahogany shaft with a grooved silver collar and a stag horn ferrule. The bulk animal is amazingly adapted to the form of the handle and distinguishes by beautifully done undercuts as well as a naturalistically rendered rugged skin.

H. 3" x 2", O.L. 39 1/2"

\$1,600-\$2,200



71. Silver Dress Cane

Ca. 1890-L-shaped silver handle hand chased and engraved with Baroque scrolls, shells and flowers extending in different but matching settings on the nose sides and with a gallant twist on the back, well figured and richly colored cocobolo shaft with a horn ferrule. The substantial and well-proportioned handle is personalized by the feathery engraved initials of its first owner and authenticated by the national Reichsmark of a crescent moon & crown mark (Halbmond und Krone) representing the entire German state. In need for a slight surface refreshing.

H. 3 ¾" x 3", O.L. 36 ¼"

\$500-\$700



71.



72.

72. Ivory Lioness Cane

Ca. 1890-Ivory crook handle with a lioness head at the end, ebony shaft and an ivory ferrule. The creating artist was pursuing here perfection in the art of the animal portrait and beautifully blurs the distinction between portraiture and ideal. So far, so good, however, what makes this cane more desirable is a recorded provenance, having been owned by Carl Hagenbeck the famous zoo owner from Hamburg-Germany, presented to Richard Sawade, wild animal dompteur and circus director and passed down by descent to the vendors. It was obviously used at very rare occasions and survived in mint condition.

H. 4 ¼" x 4", O.L. 35 ¼"

\$1,000-\$1,500



73.

73. Dog Day Cane

Ca. 1890-Stylized carved of stag horn in a basic L-shape with a long muzzle and hanging ears and embellished with inset three colored glass eyes. The handle comes with a wide silver wire braided collar, a stepped malacca shaft and a metal ferrule. The round silver badge applied on the right cheek of the head "SWAINE & Co. LONDON" hints to one of the best English cane retailers and longtime partner of Brigg. Superb condition and praised by an emphasizing and uniform age patina.

H. 3 $\frac{3}{4}$ " x 1 $\frac{3}{4}$ ", O.L. 34 $\frac{1}{2}$ "

\$500-\$600



74.

74. All Ivory Anglo-Indian Cane

Ca. 1880-Vertical handle carved to depict a stylized lion head on a plain and tapering segmented shaft with a silver collar personalized with elaborately designed initials under a crown and a 2 $\frac{3}{4}$ " tall plain silver ferrule. High-end singular commission dating back to the glorious days of the British Empire and representative for a period when the perfect gentleman would wear only customized accessories. -H. 2 $\frac{3}{4}$ " x 1 $\frac{1}{2}$ ", O.L. 35 $\frac{3}{4}$ "

\$1,000-\$1,500

75.

75. Warthog Ivory Figural Cane

Ca. 1900-Large warthog tooth carved with an alligator, well streaked and richly colored rosewood shaft and a stag horn ferrule. The reptile has an impressive head and powerful jaws and its body with thick and scaly skin and mighty claws lends it a ferocious personality and the familiar primal appearance.

H. 5 ½" x 2 ¼", O.L. 37"

\$1,200-\$1,600



76.

76. Ivory Lion Cane

19th Century-Ivory handle depicting a majestically upright male in the Gothic taste, ebonized hardwood shaft with a plain silver collar and a metal ferrule. Excellent portrait of the King of the Jungle and praised by long and careful use. Most likely English. -For additional explanations on the lion motif see #3 in this catalog.-H. 3 ½" x 2 ¼", O.L. 36 ½"

\$800-\$1,200



77.



77. Ivory Erotic Cane

Ca. 1890-Ivory handle carved to depict a woman taking her morning constitution in a squatting position and balancing to release herself. She is presented on an oval base with laurel leaf and a beaded collar, and comes on a stepped partridge shaft with a metal ferrule. The creating artist takes advantage of the pulled dress to show also her intimate parts and a bare chest as well. The carving is extremely detailed and executed in such a great care so that one can even see "efforts" on her face. French origin.

H. 3 ½" x 1 ½", O.L. 37"

\$2,000-\$3,000

78.



78. Ivory Erotic Cane

Ca. 1890-A very unique and substantial ivory ball knob carved with an erotic scene involving two men with three women, oak shaft with an encircling silver band struck with Birmingham hallmarks. The central panel is arranged in a continuous setting, and, carved in deep relief and fine detail, makes you stare and simultaneously leaves something for the imagination! The cane exudes all the charm of the days of yore and with a matured, great feel of age.

H. 2 ¼" Diameter, O.L. 34 ½"

\$2,500-\$3,500

79. Two Ivory Erotic Panels

Ca. 1900-Matching pair of ivory panels carved with different erotic scenes. The very best and deep carving and done in microscopic detail, not to mention the creative composition.

Each 2 ¾" x 2 ½"

\$5,000-\$7,000

80. Ivory Fighting Dog Cane

Ca. Preban-carved ivory handle of two hounds fighting or playing, signed sterling fluter collar, mallaca shaft and brass ferrule. H. 5 ½" x 1 ¾" O.L. 36."

\$1,000-\$1,500

81. Ivory Sword Cane

Ca. 1890-An Art Nouveau sword cane with a 7 ½" blade, screw top mechanism, faux twigspur metal shaft and a metal ferrule. H. 1 ½ x 3 ½" O.L. 35"

\$500-\$600

79.



80.



81.





82. Remington Gun Cane

Late 19th Century-A prime example in fine condition, handle unscrews from shaft to load and a push button trigger, open ferrule, H. 2 x 3 1/2" O.L. 35"

\$6,500-\$7,500

82.

83. Makhila Weapon Cane

Ca. 1885-An original horn and braided leather handle with a pair on fighting pikes, knobby shaft and a pike ferrule.

H. 8 1/2 x 1 3/4" O.L. 36"

\$400-\$500



83.



86.



85.



84.

84. Sterling Cat and Bird Cane

20th Century-A nice casting in signed sterling silver of a cat sneaking up a tree to catch a bird, ebony shaft and a brass ferrule.

H. 7 1/2" x 1 3/4" O.L. 36"

\$500-\$700

85. Asain Monkey Cane

Ca. 1890-A carved ivory handle, ornate gold filled and brass collar, oak shaft and a metal ferrule.

H. 3 3/4" x 1 1/2" O.L. 36"

\$300-\$400

86. Nautical Whale Bone Cane

Ca. 1860-A prime example of a nautical whale bone cane with a whale's tooth handle, two sections of cross-hatching on the shaft, one section of fluted columns, and 70 percent spiral carved to look like the Narwhal, never had a ferrule.

H. 1 1/2" x 1 O.L. 36 1/2"

\$1,800-\$2,200

87.

87. Ivory Frog Cane

Ca. Preban-A carved ivory frog with bulging two color glass eyes, ornate signed sterling collar, exotic wood shaft and an ivory ferrule.

H. 3 ¼ x 1 ¾" O.L. 36"

\$800-\$1,100



88.



88. Silver Octopus Cane

20th Century-A massive silver octopus cast in high relief with yellow and black glass eyes, thick exotic wood shaft with a metal ferrule. This is probably a bludgen cane.

H. 1 ¾ x 4 ¾" O.L. 36"

\$800-\$1,000

89.

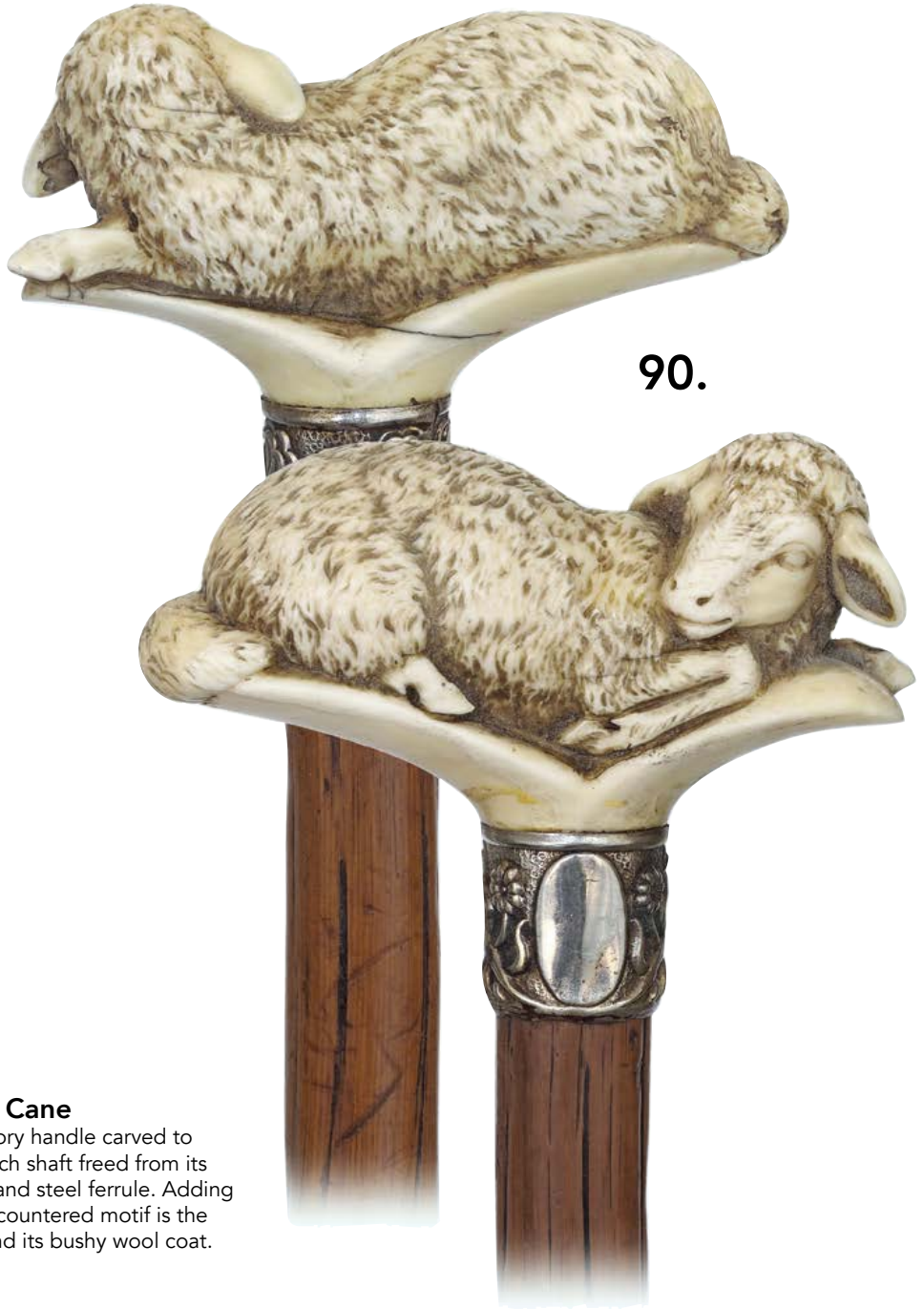


89. Asain Silver Dress Cane

Ca. 1925-A high relief silver metal casting of three Asain figures and assorted flowers, rocks and leaves, ebony shaft and a metal ferrule.
H. 6 ½" x 1 ¼" O.L. 36"

\$300-\$400

90.



90. Walrus Ivory Lamb Cane

Ca. 1890-Substantial walrus ivory handle carved to depict a prone lamb, oak branch shaft freed from its bark with a white metal collar and steel ferrule. Adding to the appeal of this hardly encountered motif is the lovely posture of the animal and its bushy wool coat.
H. 4 ¼" x 2", O.L. 35 ¼"

\$1,800-\$2,500

92.



91.



91. Hard Stone Day Cane

Ca. 1900-Large dendritic agate ball knob on its well matching pepper bamboo shaft with a metal collar and ferrule. The polished grey ball shows a wealth of differently grown and varied colored dendrites and demonstrates with superlative ease the appeal of hard stone knobs. Dendritic agate is reputed to be protective amulet when traveling. H. 2 1/4" Diameter, O.L. 34 3/4" **\$500-\$600**

92. Ivory Dachshunds Cane

Ca. 1890-Substantial and single piece and ivory handle with two dachshunds beside one another on a plain plinth. The energetic and affectionate expression of the dachshund is apparent on their faces with long muzzles flanked by arched and protruding eyebrows and long and hanging ears. Malacca shaft with an elaborate silver collar hand chased and engraved with a fox head on Baroque scrolls and a 4" long stag horn ferrule. H. 3 1/2" x 3", O.L. 35 3/4" **\$1,800-\$2,500**

94.



93. Gold American Presentation Cane

Dated 1895-Gold rolled knob fashioned in a well-proportioned customary basic shape with an integral ring collar richly hand chased and engraved with repeating panels of floral and scrollwork and engraved at the widening, round top "1845, Oliver Willison, May 28 1895". H. 1 1/2" x 1 1/4", O.L. 35" **\$500-\$700**

94. Ivory Noble Man's Cane

Ca. 1860-Ivory ball knob on its longer, cylindrical stem engraved in high relief and very fine detail with a heraldic coat of arms showing an elaborate shield and bare hand design, dark tropical wood shaft and a stag horn ferrule. There is something about this traditional cane that fires the imagination. H. 4 1/4" x 1 1/2", O.L. 37 1/4" **\$700-\$900**



93.



95. Gold American Presentation Cane

Ca. 1860-Gold rolled knob fashioned in an elegant pommel shape with a stretched and tapering body and a raised round top embellished by two hand chased matching flower collars and engraved "Presented to Chs. Braunworth By members of the Lexington Lodge 492. I.O.O.F." Three interlinked loops under the engraving speak for Free Mason's parentage. The inscription makes of this cane a "Cane of Early American History". H. 2 ¼" x 1 ½", O.L. 35 ¾"

\$700-\$900

96. Ivory Ball and Claw Cane

Ca. 1870-One-of-a-kind ivory ball and eagle claw cane in giant size and quality, ebony shaft with a plain turned ivory collar ring and a stag horn ferrule. This cane promotes a powerful character and is most likely of American origin. It aged well with the right amount of wear to increase its appeal and not diminish its value, has an expertly secured crack and boasts a glorious and luminous surface.

H. 7 ½" x 2 ½", O.L. 37 ½"

\$1,000-\$1,600

97. Ivory and Silver Dress Cane

London hallmarks 1888-Long and tapering faux sprig ivory handle with a finely chased silver cap and matching collar, well figured Makassar ebony shaft and a metal ferrule. The abundance of engraving on the silver parts brings a truly Victorian look to this cane and lends it an imposing, staff allure.

H. 5 ¾" x 1 ½", O.L. 36"

\$800-\$1,200



95.



96.



97.



98.

98. Ivory Elephant Cane

Ca. 1890-Substantial ivory knob carved of a single piece of select material in fine and naturalistic detail as a full bodied foraging elephant on a longer and slightly tapering plinth, figged ebony shaft with a metal collar and a stag horn ferrule. The bulk animal is amazingly adapted to the form of the handle and distinguishes by beautifully done undercuts as well as a naturalistically rendered rugged skin. Obviously the creating artist took his time studying the anatomy of the elephant as the proportions of his body language and facial details are unsurpassed and his gait is rendered in a scientific accuracy. Definitely the nicest ivory elephant we have ever come across! H. 4 $\frac{3}{4}$ " x 2 $\frac{3}{4}$ ", O.L. 38 $\frac{1}{2}$ "

\$1,800-\$2,500

99. Hard Stone Dress Cane

Ca. 1900-Plain Jasper ball of a most unusual burr wood like structure filled with small black and muddy green knots from dormant buds, finely chased silver collar, ebony shaft and a horn ferrule. H. 2" Diameter, O.L. 38 $\frac{1}{2}$ "

\$300-\$400



99.

100. Ivory Moon Face Cane

Ca. 1880-Ivory crook handle fashioned of one piece of blameless, select material and carved with a smiling moon face discreetly integrated on the inside of the gently angled hand rest. Way out of the ordinary. It is complimented by a deep black and closed pored ebony shaft with a stag horn ferrule and a silver collar with exceptional finely chased laurel leaf which attests to a French origin. H. 4" x 2 $\frac{3}{4}$ ", O.L. 36 $\frac{3}{4}$ "

\$1,000-\$1,500



100.

101. Knobkerrie Figural Cane

Ca. 1870-L-shaped handle finely modeled in high relief and cast in iron with a lizard and a bug on a dried wood stem, slender malacca shaft with a white metal collar and ferrule. Besides of the cane decorative merits it is a redoubtable, disguised life preserver weapon as the heavy handle and its pointed shape can have devastating effects when rightfully swung in trained hands.

H. 3 1/2" x ", O.L. 36 1/4"

\$400-\$500

102. Ivory Elephant Cane

Ca. 1900-Well-proportioned ivory crook handle with an elephant head, malacca shaft and a white metal ferrule. The naturalistic carving at the front is carried out in fine detail and shallow to blend perfectly into the curving shape of the handle, while the scrollwork-engraving on the back is sensibly highlighted with dark pigments to cover character lines and an expertly secured shameful shrinkage crack. H. 4" x 4", O.L. 35 3/4"

\$800-\$1,200

103. Ethiopian Folk Art Cane

Ca. 1800-Single piece hardwood cane fashioned in a straight configuration with a flattened, delicately engraved and pierced top incorporating various cross patterns and a hook at the back. This cane might have liturgical ties and aged well and with a very desirable well used surface and dark patina. H. 14 1/2" x 2 1/2", O.L. 33 3/4"

\$400-\$600

104. Ivory and Gold Horse Head Cane

Ca. 1910-An ivory horse head with two inset large and dark glass eyes and a 14 karat bridal, rosewood shaft and a stag horn ferrule. The horse is a symbol of physical energies or controlled vitality and represents speed, grace and nobility. H. 4" x 1 1/2", O.L. 36 1/4"

\$600-\$800



107.



105.



105. Gold American Presentation Cane

Ca. 1900-Large gold rolled knob in the customary waisted shape with multiple, integral collars richly modeled with repeating panels of floral and scrollwork and engraved at the widening, round top "J. J. CONWAY 1936", ebony shaft and a metal ferrule. The engraving is believed to be of later date as the manufacturing of these knobs ceased shortly after 1900. Mint condition and with entire sparkle. H. 1 $\frac{3}{4}$ " x 1 $\frac{1}{2}$ ", O.L. 35 $\frac{3}{4}$ "

\$500-\$800

106. Ivory Dress Cane

Ca. 1870-L-shaped ivory handle carved in very high relief with an integral escutcheon personalized with "EA" feathery initials, malacca shaft with an ivory collar and 2 $\frac{3}{4}$ " tall ivory ferrule. This cane is ivory carving at its best and distinguishes by a great feel of age. H. 7" x 3 $\frac{3}{4}$ ", O.L. 35 $\frac{1}{4}$ "

\$600-\$800

Condition Report

107. Silver Dress Cane

Ca. 1890-Substantial L-shaped silver handle with a slightly arched and pointed hand rest totally hand chased and engraved with Baroque foliate scrolls, well figured and richly colored cocobolo shaft and a metal ferrule. Best Viennese opulence with Austro-Hungarian hallmarks. H. 3 $\frac{1}{2}$ " x 3 $\frac{1}{4}$ ", O.L. 36 $\frac{1}{2}$ "

\$400-\$600

106.



108. Ivory Lion Cane

19th Century-Fine grained ivory handle with a majestically upright male lion, stepped turned and dark stained ash shaft simulating malacca and a stag horn ferrule. Excellent portrait of the King of the Jungle and praised by a light bleached surface and long and careful use. Most likely English. H. 3 1/2" x 3 1/4", O.L. 34 3/4"

\$1,800-\$2,500

109. Square Bamboo Cane

Ca. 1900-Fashioned of a single shoot of bamboo with an integral crook handle terminating with the natural bulb. The throughout square cut of this cane makes it unique and also raises the unanswered questions: Is it a fantasy of the nature, was the bamboo raised in a mold or was it trimmed in this shape? The collar is embellished with four applied and repeating white metal collar-bands struck "Nickel-Silver" and metal ferrule.

H. 7 1/2" x 4 1/4", O.L. 34 1/4"

\$200-\$300

110. Tula Silver Dress Cane

Ca. 1900-Opera shaped silver handle with an elegantly curving and slightly arched hand rest entirely decorated with a tiny pebble pattern and embellished with a plain silver cap to the back. German hallmarks on the integral and plain silver collar-ring, ebony shaft and a metal ferrule.

H. 41 1/4" x 2 1/4", O.L. 33 1/2"

\$300-\$400

111. Ivory Garden Gnome Cane

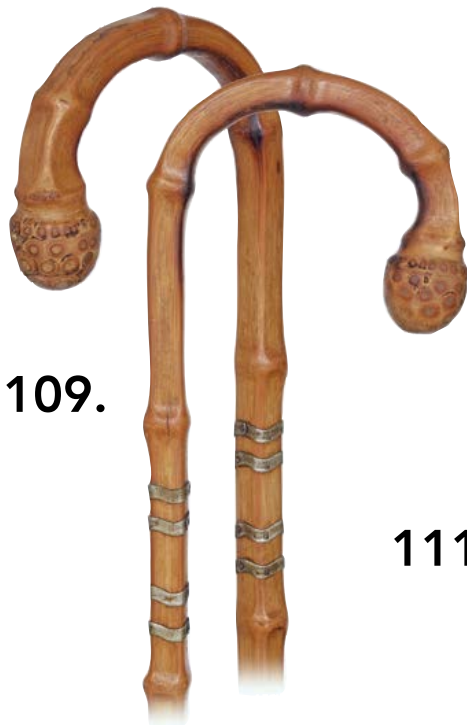
Ca. 1910-Small ivory knob carved to depict a Garden Gnome with a rabbit on a leash in one hand and a branch in the other, mahogany shaft and a stag horn ferrule. Well carved with lots of fine detail, this cane survived intact and above all fascinates children and adults alike.

H. 2 3/4" x 1 1/4", O.L. 39"

\$400-\$600



108.



109.



111.



110.



112.

114.



112. Russian Piqué Dress Cane

Ca. 1880-Holly wood cane with an Opera shaped handle densely set on its upper part with hundreds of silver wire and dot inlay. There is a strong traditional element to this cane which pays tribute to customary, centuries old Caucasian arts. Intact and upgraded by a rich age patina.

H. 1 3/4" x 1 1/2", O.L. 36 1/2"

\$500-\$700

113. Ivory Elephant Cane

Ca. 1890-Substantial ivory elephant head handle carved with large ears and tiny eyes and a bent trunk flanked by two mighty tusks, stepped malacca shaft and a metal ferrule. This classic cane distinguishes by a great feel of age and a rich patina uniformly grown on all its parts.

H. 4 1/2" x 2 1/4", O.L. 37 1/4"

\$1,500-\$2,000

114. Ebony and Ivory Anglo-Indian Parade Cane

Ca. 1890-Giant parade cane with a carved elephant head handle embellished with a lizard on the back and heavy shaft partly engraved with a twist and elaborately decorated with a multitude of ivory dot inlay. Way out of the ordinary, this top-of-the-line cane brilliantly survived the test of time spare for little splitting to the elephant trunk.

H. 4 1/4" x 4 1/2", O.L. 90"

\$600-\$800

115. An American Day Cane

Ca. 1880-Small gold rolled knob with the customary fine and elaborate chasing on its slender ebony shaft with a metal ferrule. Rarely encountered sized cane and with the right amount of wear to increase its appeal and not diminish its value.

H. 1 3/4" x 3/4", O.L. 35 1/2"

\$200-\$300



115.

113.



116. Ivory Figural Meiji Cane

Ca. 1890-L-shaped ivory handle carved to depict a sleeping young boy, well figured and richly colored Cocobolo shaft with a turned ivory collar and a stag horn ferrule. The carving is fine and detailed.

H. 3" x 1 3/4", O.L. 36 1/4"

\$600-\$800

117. Cigarette Case Cane

Birmingham hallmarks 1899-Fashioned of a single pepper bamboo shoot with a crook handle ending with the natural root bulb and heeled with a metal ferrule. The cane is fitted with a concealed cigarette case topped by hinged silver cover where the cigarettes are stored, mechanically raised by a spring and extruded one by one each time the silver cover is pulled out. The silver cover itself is personalized on one side with the engraved initials "J.R.M.D." of its first owner and stamped on the other "P.PAT.20003". H. 5 1/2" x 3 3/4", O.L. 36 1/4"

\$600-\$800

118. Dual Purpose Fishing Rod Cane

Ca. 1890-Fashioned of a straight bamboo with a natural bulb as knob and carved with an apparently angry coiled snake peering at a fabled animal on top of a mountain. The signed carving is fine and precise and the involved dramatics are beautifully rendered. The threaded brass ferrule opens to reveal the three elements pole which fit in one another and telescope out and become a functional fishing device of consistent, nearly 140" length. Signed by the creating artist, this Asian cane is the finest example of a fishing cane that we have ever offered and in good condition, spare for two expertly secured shrinkage cracks near the ferrule. H. 4" x 1 3/4", O.L. 36 1/2"

\$600-\$900



116.

118.



117.



119.



119. Life Preserver or "Lebensretter" Cane

Ca. 1900-Fashioned of a well-dressed single branch of wild cherry of a rich dark red-brown color and fitted with a white metal collar and ferrule. The handle is naturally grown at a straight angle and detaches with a concealed quarter turn locking device to release a 10 ¼" long and cylindrical hard rubber flail which makes, in the right trained hands, a redoubtable and devastating disguised weapon. Attached in picture the original Germany advertisement of the "Lebensretter". H. 7 ¼" x 4 ¾", O.L. 35"

\$500-\$700

120. Brigg Dual-Purpose Wheeled Cane

Ca. 1910-Wild life day cane fashioned of a very tall and well-dressed golden hazel branch with an integral crook handle ending with a natural bough carved as a pheasant head. The bird's head is superbly rendered. So-Far, so-good, however, what makes this cane unique besides its length is that it is equipped with a larger 5 ½" iron wheel ferrule trimmed with rubber. Indeed, fitted with hooks, the cane enlightens the transport of heavier items. It is stamped "BRIGG". H. 4 ½" x 3", O.L. 43 ½"

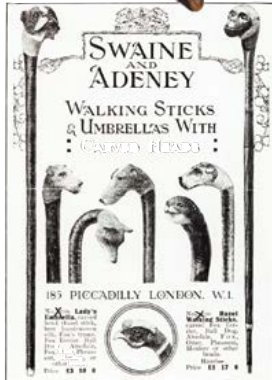
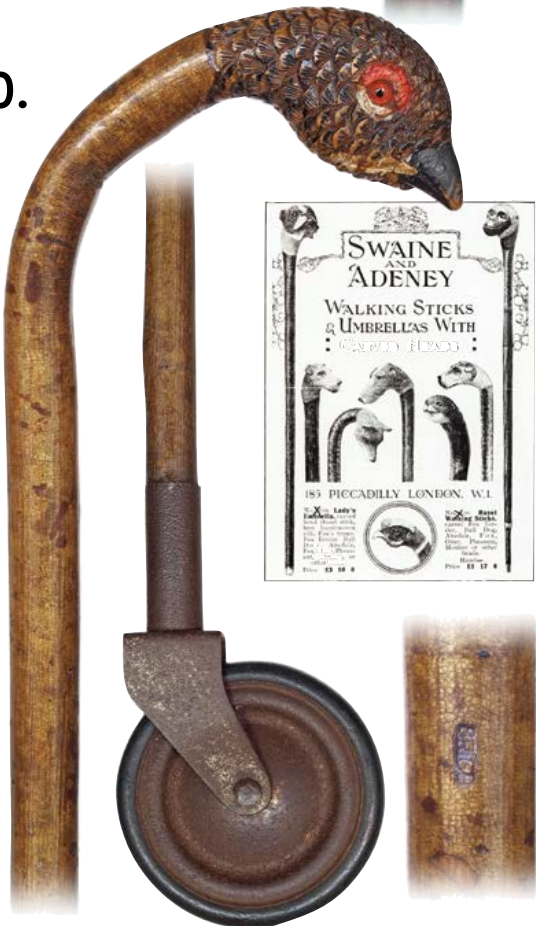
\$500-\$600

121. Miner "Steigerhäckchen" Axe Cane

Ca. 1900-Highly elaborate Saxon miner's axe cane with an ax shaped steel handle decorated with incised trailing geometrical motifs, wide angular-oval and tapering hardwood shaft decorated with inset brass wire inlay and a matching steel ferrule with a pointed tip. High-end parade cane from the Erzgebirge, a region whose name literally means 'ore mountains', situated in Saxony. H. 5 ¼" x 2", O.L. 36 ¾"

\$400-\$600

120.



121.

122. Dual Purpose Umbrella Cane

Ca. 1910-Large flamed wood crook handle imitating bamboo on a three stepped shaft painted en-suite and heeled with a horn ferrule. The slim, black silk umbrella is hidden in the telescopic shaft and pulls out after releasing the quarter turn lock device attaching it to the handle. As fresh as on its first day and with a tiny metal badge applied for the famous cane and umbrella maker Hugendubel from Munich-Germany.

H. 5 ¼" x 5 ½", O.L. 35"

\$300-\$400



122.

123. Ivory Physician Cane

Ca. 1900-Ivory handle fashioned in a well-proportioned and plain Opera shape and engraved on one side with a Rod of Asclepius, personification of Medical or healing Art and its ideals, and on the other with "EG" initials, ebony shaft and a metal ferrule.

Except for an expertly secured crack on the handle's neck, the cane survived in great condition and enjoys the merits of a natural and bright surface. H. 4 ¾" x 1 ¾", O.L. 31"

\$400-\$600

123.



124.

124. Silver Dress Cane

Ca. 1900-Opera shaped silver handle hand chased on the front with a pebble pattern in a twist configuration and embellished on the back and neck with matching, applied and encircling high relief scrollwork as well as two "Fleur de Lys". Highly grained rosewood shaft and a metal ferrule. Best silversmith work and authenticated by German hallmarks as well as an unidentified maker's mark. H. 4" x 2 ½", O.L. 34 ½"

\$400-\$500



125. Ivory Dress Cane

Ca. 1890-Long ivory handle fashioned in a straight and tapering configuration and engraved with greatest care with a roses and flowers arrangement over two oval, blank shields, ebony shaft and a stag horn ferrule. Here is something to tempt the discerning cane lover especially that we can, on hand of stylistic hints, establish a French Dieppe origin for this cane. H. 10 ¼" x 1", O.L. 35 ½"

\$500-\$600



125.



126.

128.



126. Silver Dress Cane

Ca. 1890-Well-proportioned Derby silver handle finely modeled and hand chased in the Baroque taste with scrolls and foliates, dark tropical wood shaft and a horn ferrule. Authenticated by a clear hallmark on the handle's collar, this cane survived in mint condition.

H. 4" x 2 1/4", O.L. 37 1/2"

\$400-\$500

127. Ivory Day Cane

Ca. 1870-Ivory handle fashioned in the classical and stretching Heidelberg Style and carved in high relief with elaborate rope work and tassels, ivory collar with tight grooves, malacca shaft and a brass ferrule. Singular high-end quality cane unfortunately with a serious crack to the handle.

H. 7" x 1 1/2", O.L. 32 3/4"

\$400-\$600

128. Silver Rangoon Day Cane

Ca. 1900-Sub-Continent, Burmese silver knob decorated in typical style with a finely rendered jungle scene, rarely encountered white ebony shaft with dark veins and a horn ferrule. Decorative Anglo-Colonial cane from the glorious and long-gone days of the British Empire.

H. 2" x 1 1/2", O.L. 36"

\$200-\$300

129.



127.

129. Walrus Ivory Mascot Cane

Ca. 1900-L-shaped walrus ivory handle carved with a horned dragon head with long whiskers and a pair of protruding eyes accented with dark inlay. The fabled creature head has a moving ball in its mouth and extends backwards with a prickled spine and a, snake-like, finely scaled neck. Dark rosewood shaft with an integral collar and a stag horn ferrule.

H. 4" x 2", O.L. 35 1/4"

\$600-\$900

130. Silver Day Cane

Ca. 1890-Large L-shaped silver handle with a slightly arched and pointed hand rest well chased and engraved in the Baroque taste with rich scrolls, flowers and other decorative elements, pepper bamboo shaft and a metal ferrule. Austro-Hungarian hallmarks. Used and with some wear in keeping with its age. H. 3 1/2" x 2 3/4", O.L. 33 1/2"

\$300-\$400

131. Russian Piqué Cane

Ca. 1890-Derby shaped Holly Wood handle on a longer stem densely set with silver wire and dot inlay in delicate, lace-like and intricate repeating patterns, matching tropical wood shaft and a brass ferrule. There is a strong traditional element to this cane which pays tribute to customary, centuries old Caucasian arts. H. 5 3/4" x 3", O.L. 35 3/4"

\$500-\$600

132. Silver Dress Cane

Ca. 1890-T-shaped silver handle with asymmetrically curving hand rest hand chased with rich Baroque scrolls, flamboyant elements and shells and engraved with the personalizing initials "PG". Regularly knobbed kongo wood shaft and a metal ferrule. H. 4" x 3", O.L. 31 3/4"

\$300-\$400

133. Ivory Day Cane

Ca. 1900-Long and tapering ivory handle carved with a swirling twist, cherry wood shaft and a horn ferrule. As simple as it may look, this cane is an exciting crossover between art and design and has a great feel to the hand. H. 5" x 3/4", O.L. 34 1/4"

\$300-\$400

134. Umbrella Day Cane

Ca. 1920-Large composite material crook handle imitating bamboo on a cylindrical metal tube painted to simulate malacca and a white metal collar and ferrule. The handle is threaded and detaches from the shaft to give access to a slender umbrella hidden in the shaft. It is a good combination of a cane and an umbrella. H. 4 3/4" x 4 3/4", O.L. 35"

\$200-\$300



135.



135. Silver Dress Cane

Ca. 1890-L-shaped silver handle with a pointed hand rest chased with a twirl and a blank escutcheon at the front and fitted with an integral, plain and tapering collar. It has minor bumps at the front, is validated with a clear set of Austro-Hungarian hallmarks and comes on an ebony shaft with a metal ferrule. H. 4" x 3", O.L. 34 1/2"

\$300-\$400

136.



136. Early Ivory Cane

Ca. 1840-Fashioned in a basic T-shape with rounded and slightly dropping ends, the ivory handle comes on a Whangee bamboo shaft with a plain metal collar and matching oval eyelets. This cane is a good example of restraint Biedermeier taste in superb condition and with a great feel of age and nicely faded surface. Charlie Chaplin's character, The Little Tramp, is famously known for his whangee cane and John Steed, the dapper secret agent from television's The Avengers, was known for carrying an umbrella with a whangee handle. H. 3 3/4" x 1 1/2", O.L. 33"

\$300-\$500

138.



137. Silver Day Cane

Ca. 1900-Opera shaped silver handle with a hammered surface and an applied scalloped cap at the front, ebonized malacca shaft and a metal ferrule. This cane is struck with a "STERLING SILVER" hallmark above a "P.S. & Co." for the Preisner Silver Company - Wallingford, CT and distinguishes by excellent proportions as well as functional and beautiful simplicity. H. 3 1/2" x 1 3/4", O.L. 35 1/4"

\$300-\$400

137.



138. Bull Penis Cane

Ca. 1920-The single piece cane is fashioned of a stretched, twisted and dried bull penis. It is stiff enough to lean on, has a honey toned color with a blackened surface and is fitted with a metal ferrule. Much mysticism is attached to these canes which are also known as bovine, phallic or penile. In the old rural areas these were considered ideal sticks to reprimand a recalcitrant wife because they left no welts or scars. H. 4" x 1 1/4", O.L. 34 1/2"

\$100-\$200

139. Hard Stone Dress Cane

Ca. 1900-A sizeable jasper ball knob boasting a striking, mottled structure and pale coral and green colors, rosewood shaft with a metal collar and horn ferrule.

H. 2" Diameter, O.L. 38 ½"

\$300-\$500

140. Knobkerrie Figural Day Cane

Ca. 1870-Bronze cast hooded hermit head with finely modeled facial traits and Celtic style decoration on the cowl on an ebonized hardwood shaft. The choice of the motif is not incidental and might have associations with the saying "Never trust a monk" as the heavy head can have devastating effects when rightfully swung in trained hands.

H. 2" x 1 ¼", O.L. 33 ¼"

\$300-\$400

141. White Metal Day Cane

Ca. 1900-Large white metal, Alpaca crook handle fashioned in the shape of a stylized stag horn with oak leaves and acorns, malacca shaft and a metal ferrule. Sturdy and tasteful walking cane, used and in good condition spare for minor dings fully or totally in keeping with its age and does not in any way detract from its beauty.

H. 4 ¼" x 3 ¼" x 36 ¾"

\$200-\$300

142. Silver Day Cane

Ca. 1900-Silver crook handle with a cylindrical configuration and a widening, drop-shaped nose, ebony shaft and a brass ferrule. The entire body is entirely engraved with a dense-stroke-like pattern and adorned a wider Baroque cartouche with engraved "SJ" initials. An Austro-Hungarian hallmark as well as an obscured maker's mark and an "800" side by side on the collar attest for the Viennese origin of this cane with few marks and small dents in keeping with its use and age.

H. 3 ¾" x 4 ½", O.L. 34 ¾"

\$300-\$400



141.



140.

142.



143. Alpaca Day Cane

Ca. 1900-Large Opera shaped white metal handle chased with decorative elements and rounded and repeating grooves on the top to help a better fit in the hand, malacca shaft and a metal ferrule. Sturdy and tasteful walking cane, used and still in good condition and only in need for some surface cleaning.

H. 4 ¾" x 3 ½", O.L. 35 ½"

\$200-\$300



143.



144. Folk Art Horse Cane

Dated 1945-Fashioned of a single hard wood branch freed from its bark with a naturally grown crook handle terminating in a carved horse head and fitted with a metal ferrule. The back is engraved and colored with a stylized flower above the inscription "LANDEK TIROL 1945".

H. 9 ½" x 6", O.L. 34"

\$100-\$200

146.



145. Three Irish Shillelaghs

Ca. 1900-Two fashioned of knobby blackthorn branches left with its dark bark except for the polished handles naturally grown at an angle and a third one of substantial size freed from its bark to reveal a quirky growth with a multitude of sanded thorns. The latter is engraved with the initials "FM" while the three are fitted with metal ferrules. Shillelaghs are the national weapon of rural Ireland.

Respective O.Ls. 38 ½", 37 ¾", 35 ½"

\$200-\$300

146. Horse Sword Cane

Dated 1896-A signed silver racehorse, thoroughbred, sword cane with a 19" fluted blade with blood groove, tight push and pull mechanism, ebonized shaft and a metal ferrule.

H. 4 ½" x 4 ½" O.L. 35"

\$800-\$1,200



144.

145.



147. Horn Bird Cane

Ca. 1900- A carved horn in the shape of a probably extinct bird with two color glass eyes, signed sterling collar, tigr maple shaft and a metal ferrule.

H. 4 ½ x 1 ½" O.L. 36"

\$300-\$350



147.

148. Important Ivory Pique Cane

Dated 69 for 1669-The best symmetrical pique that we have seen, probably the finest example that we have ever offered at auction, over 1,000 pieces of silver inlayed into this handle, atop is the initial A.J. 69, three complete rings of pique work completely around the handle, lanyard holes, with over 50 silver inserts each, original patina throughout, ribbed coin silver collar, 1 ¼" thick rainspotted malacca shaft and a brass and metal ferrule. Museum quality.

H. 4 x 1 ¾" O.L. 35 ½"

\$6,500-\$8,000



148.



151.



149.

149. Jeweled Silver and Porcelain Dress Cane

Ca 1890-A fancy dress cane with an unusual purple stone atop, two sections of ornate which are signed sterling and Fc.Co. handpainted medieval maiden, ebony shaft and a metal ferrule.

H. 8 ½ x 1" O.L. 36"

\$500-\$800

150. Ivory Thousand Face Cane

Ca. 1890-A nice carved Japanese handle, silver metal collar, ebony shaft and a metal ferrule. H. 1 ½" x ½" O.L. 34 ½"

\$500-\$700

151. Massive Nude and Seacreature Dress Cane

20th Century preban-A massive carved handle of a mystical creature getting ready to swallow a partially nude maiden, signed sterling collar, honey malacca shaft and a metal ferrule. H. 5 x 5" O.L. 36"

\$2,500-\$3,000



150.

152. Bull Penis Cane

Ca 1950-A nice example of this type of cane. Ready to walk with, large stopper ferrule. H. 4 x 4 ½" O.L. 34"
\$100-\$200

153. Whip It or Greyhound Ivory Cane

Ca. 1900- A nice carved ivory handle with two colored glass eyes, British hallmarked silver collar- H.T &?, twigspur ebony shaft with ivory tips and a metal ferrule, H. 2 ½" O.L. 36"
\$1,000-\$1,200

154. Erotic Silver Nude Cane

Late 20th Century-A very fine casting in sterling silver of a full frontal nude with flowing hair throughout the handle, made by the deceased artist Keith Cowie, exotic wood shaft and a brass ferrule. H. 4 x 3 ¾" O.L. 36 ½"
\$600-\$700

155. Asain Sword Cane

Ca. 1875-A hardwood handle with a two sided, unsigned 14 ½" blade, working push and pull mechanism, braided leather on wood shaft and a metal ferrule. H. 6 x 4" O.L. 34 ½"
\$350-\$500

154.



153.



152.



155.

156. Spring Hilt Sword Cane

Late 19th Century-A massive bamboo handle with a silver metal endcap, working springhilt with 28" blade with two blood grooves, enormous bamboo shaft and a metal ferrule.
H. 5 1/2" x 6 1/2" O.L. 36"

\$500-\$1,000

157. Pipe System Cane

Ca. 1920-A nice compartment cane which holds a burl pipe, bark covered shaft and a metal ferrule. O.L. 36"

\$200-\$250

158. Pipe System Cane

Ca. 1900-A compartment cane where the bark covered shaft serves as the pipes stem, metal ferrule. O.L. 36"

\$200-\$250

156.

157.

159. Writer's System Cane

Ca. 1890-A system cane which has a fountain pen tip, an ink bottle and an ink scraper, maple shaft and a metal ferrule. O.L. 36"

\$200-\$400

158.

159.

160. Fan System Cane

Ca 1900-A nice example of this genre with a near mint fan which can be pulled directly from atop the cane, a second segment of the shaft is a fountain pen, exotic wood shaft and a metal ferrule. O.L. 36"

\$500-\$700

161. Articulated Terrier Umbrella

Ca. 1930-A well carved and painted terrier with a push button opening lower jaw, two color glass eyes and original lanyard, telescoping exotic wood shaft and a metal ferrule.

H. 2 1/2" x 2 1/2" O.L. 22 1/2"

\$250-\$350

162. Two Sterling Canes

Ca 1900-A pair of sterling dress canes with an average length of 36"

\$200-\$300

163. Pair of Antique Umbrellas

Ca. 1925- One with a bamboo handle and the other with a staghorn, an average length of 36"

\$150-\$250

164. Mikilla Defensive Cane

Ca. 1890- A horn handle with a 3" pike blade hidden, knobby branch shaft, probably from Biarritz and a large brass ferrule. O.L. 36"

\$150-\$250

165. Three Stag Canes

Ca. 1830-1900-Nice verage condition, all hardwood shafts and all have ferrules. A.L. 36"

\$200-\$300



167.



166. Shooter's Cane

Ca. 1935-A system cane in nice condition, hardwood shaft and a screw off ferrule that attaches to the upper shaft for safekeeping, O.L. 35"

\$150-\$200

167. Three Small Silver Canes

Ca. 1910-One is a swagger stick with a snakewood shaft (24") Other two are dress sterling handles with an averages length of 34"

\$200-\$300

168. Three Country Canes

Ca. 1900-All three have silver attachments and all have ferrules. Average O.L. 36"

\$100-\$200

169. Three Antique Canes

Ca. 1900-One with a horn handle and a silver collar, one horn staff which is 53" A.L. 35"

\$100-\$200

170. Jimmy Carter Political Cane

Ca. 1976-A cast Jimmy Carter for President political cane in nice condition, hardwood shaft and a stopper ferrule.

H. 4 1/2" x 4 1/2" O.L. 35 1/2"

\$100-\$200



168.

166.



170.

169.

171. Five Good Ivory Canes

Ca. 1875-1900-Five canes which were unpaid for a couple of auctions ago and they are being offered as a lot, all are in nice condition with various hardwood shafts and all have ferrules. Aver length is 35 1/2"

\$1,500-\$1,800

172. Group of Nine Country and Folk Canes

Average Length of 35"

\$200-\$400

173. Group of Ten Country and Folk Canes

Average Length of 35"

\$200-\$400

174. Bull Penis Cane

Ca. 1850-A very early example of this type of cane with a wood insert atop and a small tack ferrule. O.L. 31 1/2"

\$100-\$150

175. Segmented Folk Cane

Ca. 1920-A segmented shaft and handle with various types of exotic woods, small silver metal collar and a matching silver ferrule. H. 2" x 3" O.L. 35 1/2"

\$75-\$150

173.



175.



172.



171.





177.



176.

176. Pair of Leather Washer Canes

Ca. 1910-One with a nice horn handle, fine condition and both have ferrules, Average O.L. 34"

\$100-\$150

177. Three Silver Metal Canes

Ca. 1900-Two with dents and damaged but really nice shafts, each with ferrules.

\$100-\$200

178. Four Asain Canes

Ca. 1900-1920-Two bamboo, one lacquered and the other carved hardwood, Average O.L. 35"

\$250-\$300

179. Two Bludgen Canes

Ca. 1900-Both with silver metal handles, one with mother of pearl sides, hardwood shafts and both have ferrules, Average O.L. 34 1/2"

\$200-\$300



179.



178.

180. Two Snakeskin Shafts

Early 20th Century-Average O.L. 34 1/2"

\$100-\$150

181. Tippler's Stick

Ca. 1890-A nice early Tippler's stick with a 12" glass tube, needs a cork, natural grown vine shaft and a metal ferrule. H. 6" x 1" O.L. 36"

\$100-\$200



180.



181.

182. Ten Antique Canes

Ca. 1880-1910

\$200-\$300

183. Gold Duck Cane

Ca 1920- A finely cast signed 18 kt rolled-gold plated Mallard head with actual two color taxidermy eyes, stepped partidgwood shaft and a metal ferrule.

H. 3 ½ x 3" O.L. 35"

\$300-\$500

184. Bone Dress Cane

Ca. 1800-"Beatrice U Noselson" is carved into the bone collar, high relief carving of Pan, Geese ,and a small child, exotic wood shaft and a metal ferrule. German. H. 5 ½" x 1 ¾", O.L. 36"

\$600-\$900

185. Quartz Dress Cane

Early 20th Century-A pink quartz mushroom style handle with a vibrant color in fine condition, silver metal collar with a bright cut rock crystal faceted attachment, snakewood shaft and a horn ferrule. H. 2 ¾" x 1 ½", O.L. 38"

\$400-\$600

186. Art Nouveau Silver Cane

Ca. 1890-A high relief carving of Eve holding the snake in the Garden of Eden with apples hanging from the tree, signed 925, hardwood shaft and a horn ferrule.

H. 4 ½" x 4 ½", O.L. 34"

\$500-\$700

182.



183.



186.



184.



185.



189.



187. Quartz Dress Cane

Ca. 1890-A pretty quartz handle with a violet tint, large silver collar which is signed Brigg London, thick ebony shaft and a horn ferrule.
H. 2 1/2" x 1 1/8", O.L. 36"
\$300-\$500

188. Gold Stone Dress Cane

Ca. 1890-A beautiful gold stone enamel handle with silver overlay, signed sterling presentation collar, faux bamboo partrigewood shaft and a metal ferrule.
H. 1 1/2" x 1 3/4", O.L. 36"
\$350-\$450

189. Signed Tiffany Jade Cane

Dated 1914-A beautiful jade handle in the right deep spinach color, See photo for Tiffany markings, 14 kt gold presentation collar, malacca shaft and a metal ferrule. Fine condition.
H. 3 1/2" x 2", O.L. 35"
\$2,000-\$3,000

187.



188.



191.



190.



190. Enamel Parrot Cane

20th Century-An enamel parrot head with two color glass eyes with an over varnish, one small section of varnish is missing on the rear of the head, ornate gold-filled collar, ebonized shaft and a metal ferrule.
H. 1 3/4" x 1 3/4", O.L. 36"
\$250-\$300

191. Hard Stone Dress Cane

Early 20th Century-The agate has greens oranges and whites throughout and maybe a little brown, large gold-filled collar, ebonized shaft and a metal ferrule.
H. 2 1/2" x 7/8", O.L. 36"
\$300-\$400

192. Gold Dress Cane

Ca. 1860-A high relief gold filled handle in very fine condition, eight sided American walnut shaft and a metal ferrule.

H. 1" x 2 1/4", O.L. 34 1/2"

\$300-\$500

193. Nautical Whalebone Cane

Ca. 1840-A carved whalebone handle with an abalone disc atop, inlaid abalone in the 3/4" whalebone shaft, pair of coin silver diamond shaped eyelets, six sided to round whalebone shaft and no ferrule.

H. 1 1/4" x 3 1/2", O.L. 33 1/2"

\$400-\$600

194. Cowboy Dress Cane

Late 19th Century-A honey horn handle with a signed gold collar, gold initials attach to the shaft J.S.B., probably John B. Stetson, honey malacca shaft which is signed Dunhill, London & New York, matching horn ferrule. H. 3 1/2 x 4" O.L. 35"

\$500-\$700

195. Early Sword Cane

Late 17th Century-A very nice early example of a stag sword cane with an initialed cartouche atop, coin silver collar and eyelets, push and pull two-sided blade with blood groove, stepped split bamboo shaft, 4" iron ferrule.

H. 3 1/2 x 2" O.L. 36"

\$500-\$800

196. Toledo Horn Sword Cane

Ca. 1900-A horn crook handle with a gold metal collar, signed 23 2/3" Toledo foil blade in mint condition, push and pull working mechanism, bamboo shaft and a horn ferrule.

H. 3 1/2 x 3 3/4" O.L. 35"

\$500-\$700

192.



194.



193.



195.



196.



201.



199.



197. Best Toledo Sword

Late 19th Century-A hard bamboo crook handle with a basket woven silver collar, highly engraved and mint 27 1/2" Toledo blade with a push and turn mechanism which works perfectly, nice bamboo shaft and a bi-metal ferrule. H. 5 1/4 x 7" O.L. 36"

\$700-\$1,000

198. Alligator Dress Cane

Ca 1900-A Britania or pewter handle of a lazy alligator, Spanish oak shaft and a metal ferrule. H. 3 1/2 x 2 3/4" O.L. 36"

\$400-\$600

199. Agate and Tortoise Dress Cane

Dated 1896-A well figured brown agate with a tested gold upper collar, two gold metal lower collars, twigspr upper tortoise shaft, nice pair of tassels, snakewood shaft and a horn ferrule. H. 8 1/4 x 1 1/4" O.L. 36"

\$600-\$900

200. Two Extremely Nice Crook Handle Dress Canes

Average length 35"

\$200-\$350

201. McKinley Political Cane

Of the period-A cast McKinley head in high relief in extremely nice condition, just needs a polish, hardwood shaft and no ferrule.

H. 3 1/2 x 1 3/4" O.L. 34"

\$200-\$300

198.



197.



200.



202. Stag And Silver Dress Cane

Ca. 1880-An early stag handle with a signed sterling ornate endcap, large sterling collar, thick maple shaft and no ferrule.

H. 5" x 1 3/4" O.L. 36"

\$200-\$300

202.

203. Ivory and Horn Naughty Leg Cane

Ca. 1875-The high top shoe on the leg attaches in suite with the horn leg, small coin silver collar, flexible mallac shaft and a brass ferrule.

H. 2 1/2 x 2 1/2" O.L. 33 1/2"

\$300-\$400

204. Alligator and Bone Cane

Ca. 1920-A carved handle which is probably alligator bone, orangewood shaft with a 5 1/2" alligator carved on one side and never had a ferrule.

H. 3 1/2" x 1" O.L. 35"

\$400-\$700

205. Ivory System Cane

Ca. 1875-The handle is an ivory compartment which unscrews to expose a brass cannister probably for carrying poison or owner's favorite drug, thick malacca shaft, horn ferrule.

H. 1 1/2 x 1 3/4" O.L. 35"

\$300-\$400

206. Bone, Two Ivory Canes plus One Gambler's Cane

Ca. 1885-Average O.L. 35"

\$500-\$800

207. U.S. Large Cent and Ivory Cane

Coin is dated 1845- An ivory handle with a large cent atop, silver metal collar, exotic wood shaft and nice horn ferrule.

H. 1 1/2" x 1 3/4" O.L. 36"

\$200-\$300





Kimball M. Sterling, Inc. (TFL-1915)
125 West Market Street
Johnson City, Tennessee 37604
kimballsterling @ earthlink.net
423.928.1471

Photography by James Price
Catalog Design by KT Design, LLC
www.ktdesignllc.com
© Copyright 2016 Kimball M. Sterling, Inc.