

A man with glasses, wearing a light blue button-down shirt, a patterned tie, and light-colored shorts, stands in a display of various canes and walking sticks. He is holding a cane in his right hand. The background features a display case with a skeleton and other items, and several canes are lined up on a shelf behind him.

RICK WAGNER'S CANES

AUGUST 27TH, 2011

KIMBALL M. STERLING, INC.
TFL-1915

TERMS & CONDITIONS

1. Cash or check. A 15% buyers' premium will be added to the hammer price as part of the sale price for in-house, phone, and absentee bidders. We reserved the right to hold purchases until the buyers checks clears if buyer is not known by us. Bank letter of credit is acceptable. A 20% buyers fee will be charged to internet bidders.

2. Mail or phone bids are accepted; the firm may require a deposit.

3. Kimball M. Sterling, Inc. has endeavored to catalog and describe the property correctly. All property is sold as is and neither the auction company nor the consignor will be responsible for descriptions, genuineness, provenance or condition of the property. No statement in the catalog made orally at the sale or otherwise shall be deemed to be a warranty, representation, or an assumption of liability.

4. In the event of any dispute between bidders, the auctioneer shall have total discretion to determine the successful bidder, in which his determination shall be final or to re-offer and resale the article in dispute. Title of the item or items purchased by the bidder will pass at the fall of the gavel and declaration of bidder. This is not an approval auction. All measurements are approximate.

5. Principal auctioneer: Kimball M. Sterling #2467. B. Elizabeth Sterling, auctioneer # 5757. Firm Kimball M Sterling Inc. TFL-1915

6. Bidders may bid live on the Internet by visiting <http://www.auctionauction.com> You may also view the auction at this site and bid by phone.

7. Communications:
Telephone 423-928-1471.
Fax 423-928-2816.
Cellular 423-773-4073, 423-773-4072.
Email kimballsterling@earthlink.net

8. Worldwide shipping available. International

sales which are protected by C.I.T.E.S. permits can also be arranged. Estimated bidders cost per cane is \$255.00 for permits and inspections plus the shipping cost. A permit may also be required by your country . Buyers pay for shipping, packing and insurance from United states Postal Service.

9. Kimball M. Sterling, Inc. will not be held responsible for bids received on the day of the auction, unexecuted absentee bids, phone bidders not contacted or slow Internet bids. Although we do attempt to get all bids executed problems do occur. There will be no recourse from the bidder. We will not be responsible for items left on our location for over 30 days.

10. Sale will be conducted at 125 West Market Street, Johnson City, Tennessee. 37604. Announcements day of the sale take precedence over pre-sale advertising. Any litigation that pertains to this auction will be conducted in the county of Washington in Tennessee and is agreed upon by registering for this auction.

11. Airport is the Tri-Cities Airport, which is approximately 20 miles from the gallery. Internet catalog and live bidding available at www.auctionauction.com Best Western Hotel: 423-282-2126. A very fine hotel which offers Sterling Auction a discount rate is the Carnegie Hotel 1216 W State of Franklin Rd, (423) 979-6400.

12. Please call for condition report on sale lots or email us. We do send out multiple photos by email of any lot in the auction .By registering for this auction you accept the terms.

13. Parking service is free.

KIMBALL & VICTORIA STERLING PRESENT

RICK WAGNER'S CANES

SATURDAY, AUGUST 27TH
1:00 PM EST

PREVIEW - FRIDAY, AUGUST 26TH 12:00 - 4:00 PM EST
SATURDAY, AUGUST 27TH 10:00 AM EST



Kimball M. Sterling Auction Gallery
125 West Market Street
Johnson City, Tennessee 37601
kimballsterling @ earthlink.net
423.928.1471

Live on the internet at
LIVEAUCTIONEERS.COM
Two Time Winner of Best of Show
from the National Auctioneers Association

WWW.AUCTIONAUCTION.COM

1. An African American late 19th Century-6" x 4" ivory handle, ornate sterling collar, malacca shaft, 36" O.L., brass ferrule
\$800-\$1,200

2. A late 19th Century 3 ¼" x 1" ivory handle with a snake and turtle, silver collar, bamboo shaft, 35" O.L., bi-metal ferrule
\$250-\$500

3. An American ivory 5" x 1 ¾" dog, gold-filled collar, exotic wood shaft, 35" O.L., bi-metal ferrule
\$700-\$1,000

4. A late 19th Century 1 ¾" x 1 ¾" Asian ivory handle, ornate silver collar, bamboo shaft, 36" O.L., bi-metal ferrule
\$400-\$600



1.



2.



4.



3.



5. A late 19th Century 3 ¼" x 1 ¼" ivory cat and snake handle, etched silver collar, bamboo shaft, 33 ¼" O.L. , iron ferrule
\$400-\$500



6. A British sterling 4" x 2 ½" dog dated 1906, exotic wood shaft, 33 ½" O.L., bi-metal ferrule
\$400-\$600

7. A walrus 3 ¼" x 1 ½" carved owl circa 1900, white metal collar, exotic wood shaft, 34 ½" O.L. , bi-metal ferrule
\$400-\$600

8. An early 20th Century 4 ¾" x 4 ½" sterling handle, ebonized shaft, 36" O.L. , metal ferrule
\$200-\$400

9. A late 19th Century 3" x 2 ½" britannia handle, ornate inscribed collar, faux tortoise shell hardwood shaft, 35 ½" O.L. , bi-metal ferrule
\$300-\$500



10. A German 830 Silver 4" x 2 3/4" handle, stepped wood shaft, 36" O.L., brass ferrule
\$300-\$500



10.

11. A German late 19th Century 4 1/2" x 1 3/4" ivory handle, small brass collar, natural vine shaft, 34" O.L., bone ferrule
\$500-\$700



12.

12. A 3" x 1 1/2" walrus ivory handle circa 1885, ornate silver collar with fox, woven flexible leather shaft, 34 1/2" O.L., metal ferrule
\$400-\$500

13. An Art Nouveau period 4 1/2" x 2 1/4" ivory and silver handle, exotic wood shaft, 34" O.L., horn ferrule
\$400-\$600

14. A gold filled 3 1/2" x 3" handle circa 1930, ebonized shaft, 35 1/2" O.L., bi-metal ferrule
\$350-\$500

14.



13.



11.



15.



15. A 3 1/2" x 1 3/4" walrus ivory horse head which is dated 1872, inscribed silver collar, exotic wood shaft, 34 1/2" O.L. , brass ferrule
\$400-\$600

16.



16. A 5" x 2" massive ivory handle with a lion with two color glass eyes dated 1904, ornate inscribed silver collar, stepped bamboo shaft, 36" O.L. , bi-metal ferrule
\$800-\$1,200

17.



17. A walrus ivory 4 1/2" x 1 1/2" late 19th century horse with two color glass eyes, inscribed and signed sterling collar, exotic wood shaft, 33 1/2" O.L. , bi-metal ferrule
\$500-\$600

18. A porcelain 2 1/2" x 2" French early 19th Century handle, malacca shaft, 45" O.L. , 8 1/2" ivory ferrule
\$700-\$1,000

18.



19. A carved and painted 2 ¾" x 4 ½" handle, circa 1900, sterling collar, oak shaft, 37" O.L. , bi-metal ferrule
\$400-\$600

20. A late 19th Century 1 ¾" x 4 ½" ivory lion and chain handle, signed sterling collar, thin malacca shaft , 37" O.L. , horn ferrule
\$400-\$600

21. A 4" x 1 ¾" Ivory Horse with two color glass eyes, ornate gold-filled collar signed Lyon, hardwood shaft, 35 ½" O.L. , horn ferrule
\$800-\$1,200

22. A nautical mid 19th Century 2 ¾" x 1 ½" ivory creature with baleen eyes, two baleen spacers, one ivory spacer, a ¾" whalebone shaft, 34 ½" O.L. and no ferrule
\$1,000-\$1,500



21.



22.



20.



19.



23.

23. A late 19th Century 2 ¼" x 2" ivory tiger with two color glass eyes, ornate inscribed gold filled collar, malacca shaft, 35 ½" O.L. , 2 ½" horn ferrule
\$800-\$1,200



24. A historical Admiral Nelson nautical cane of which the handle is made of copper after the breaking up of the ship "Foudroyant", ebony shaft, 36" O.L., metal ferrule
\$300-\$500

25. A 4 ¼" x 1 ¼" Art Nouveau ivory handle with semi precious stones inserted on each end, silver collar, ebony shaft, 34 ½" O.L. , metal ferrule
\$300-\$500

26. An early 20th Century 5" x 1 ½" ivory handle, silver collar, rich mahogany shaft, 34 ¾" O.L., bi-metal ferrule
\$300-\$400

25.



26.



24.



27. An Egyptian Revival 9" x 1 1/4" early 20th Century ivory handle, ivory spacer, ebony shaft, 36" O.L. , 2" ivory ferrule
\$500-\$700

28. An English late 17th Century 1 1/2" x 3 3/4" silver and ivory pique handle, malacca shaft, 33 1/2" O.L. , 5" bi-metal ferrule
\$1,500-\$1,800

29. A late 19th Century 3" x 2" silver jockey, rich mahogany shaft, 36" O.L., metal ferrule
\$500-\$800

30. A gold 2 1/2" x 1 1/2" presentation cane dated 1881, tested to be at least 10kt, ebony shaft, 35 1/2" O.L. , metal ferrule
\$700-\$1,000



28.

30.



27.



29.



31.

31. A massive 5" x 2" early 19th Century ivory handle, ribbed silver collar, ivory eyelets, malacca shaft, 36" O.L., 3 3/4" brass and iron ferrule
\$1,200-\$1,500

32. A late 19th Century 5" x 1 1/2" ivory child, small silver collar, exotic wood shaft, 35 1/4" O.L., bi-metal ferrule
\$500-\$700

33. A circa 1840 1 1/2" x 1 3/4" ivory going ashore cane, inscribed silver collar, coin silver diamond shaped eyelets, hardwood vine shaft, 33 1/2" O.L., iron ferrule
\$200-\$400

34. An English early 19th Century 4 1/4" x 2" ivory lion and snake handle with two color glass eyes, brass collar, twig spur shaft, 37" O.L., bi-metal ferrule
\$400-\$600

33.



32.



34.



35. An early 20th Century 4 ½" x 2" ivory handle with an elephant carved in relief, small silver collar, oak shaft, 36 ½" O.L. , bi-metal ferrule
\$400-\$500

35.



36. A mid 19th Century Continental 2 ¼" x 1 ½" high relief silver handle, original carrying chain, honey malacca shaft, 35 ½" O.L. , bi-metal ferrule
\$500-\$700

36.



37. A late 19th Century massive 4 ½" x 2" ivory horse head with two color glass eyes, silver collar and signed silver presentation, snakewood shaft, 33 ¾" O.L. , horn ferrule
\$1,200-\$1,500

38. An early 20th Century Austrian tippler stick, contains 2 of its three original vials, 34" O.L. brass ferrule
\$100-\$200

39. A Pitcairn Island fist cane which was probably made in the early 20th Century, exotic shaft, 36" O.L. and no ferrule
\$250-\$450

37.



39.

38.





42.

40. A late 19th Century 2 ¼" x 4" ivory lion, gutta-percha shaft, 34" O.L., brass ferrule
\$300-\$400

41. A 4 ½" x 3" signed 800 silver handle, German hallmarks, malacca shaft, 36" O.L., a brass ferrule
\$500-\$600

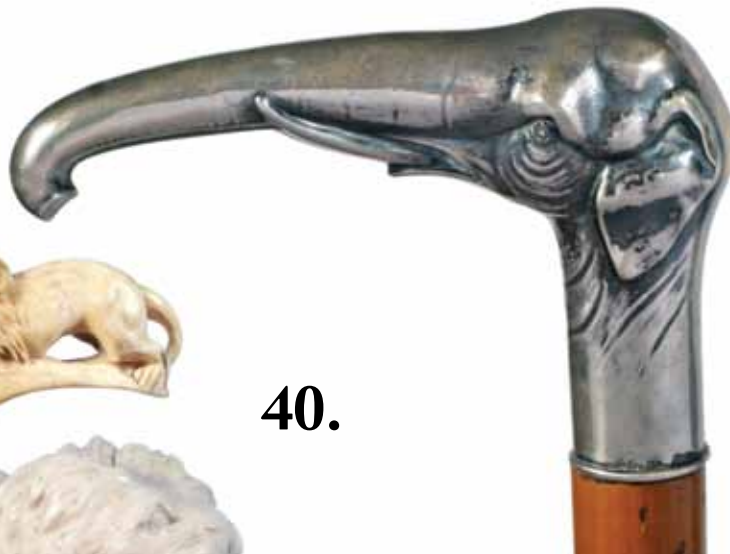
42. An automated 3" x 2 ¼" carved German handle with glass eyes and painted tongue, push button mechanism in rear of head, small gold-filled collar, bamboo shaft, 36" O.L., horn ferrule
\$1,000-\$1,500

43. A 7 ½" x 1" Chinese cloisonné handle, ebony shaft, 42" O.L., brass ferrule
\$300-\$500

43.



41.



40.



44. A sterling 1 ¼" x 2 ¼" embossed dog handle, mahogany shaft, O.L. 33 ½", bi-metal ferrule
\$250-\$350

45. A signed but unreadable 4 ¼" x 4 ½" silver handle, exotic wood shaft, O.L. 36", brass ferrule
\$400-\$500

46. A worn 2" x 1 ½" gutta-percha handle, ornate brass collar, exotic wood shaft, 35 ¾" O.L., horn ferrule
\$150-\$250

47. A British hallmarked silver swan with glass eyes, bamboo style shaft, 35 ½" O.L., brass ferrule
\$250-\$350

48. A late 19th Century 4" x 1 ½" ivory lion and snake handle, hardwood shaft, 35 ¾" O.L., ivory ferrule
\$500-\$700



46.



47.



45.



44.



48.

49.



49. A 3" x 4" ivory handle of a lady Circa 1880, ornate gold-filled collar, exotic wood shaft, 36" O.L., ivory ferrule

\$300-\$400

50.



50. A circa 1895 5" x 1 1/2" ivory lion handle, ornate gold-filled collar, spiral carved ebony shaft, 34 1/4" O.L., spiral carved ivory ferrule

\$400-\$600

51. A porcelain 3 1/2" x 1 3/4" scenic painted handle, large ornate gold-filled collar, exotic wood shaft, 34 1/2" O.L., metal ferrule

\$500-\$700

52. An 1890 Asian carved 4 1/2" x 1 1/4" eagle and monkey handle, silver metal collar, exotic wood shaft, 35" O.L., brass ferrule

\$500-\$600

51.



52.



53. A circa 1890 Asian carved 5" x 1 3/4" ivory handle, ornate brass eyelets, natural bamboo shaft, 35 1/4" O.L., spiked brass ferrule
\$600-\$800



56.



53.

55.





58.

57. A late 19th Century carved Continental folk cane with whimsical figures and snake, inset eyes with some paint remaining, 3 1/2" O.L., iron ferrule
\$400-\$600

57.



58. A circa 1900 4 1/2" x 1 1/2" ivory snake handle, signed sterling collar, deep brown malacca shaft, O.L. 34 1/2", the end of the tail is missing, horn ferrule
\$500-\$700



59. An 1 1/2" bloodstone sphere circa 1920, ornate 5 point star collar, mahogany shaft, 34 1/2" O.L., brass ferrule
\$350-\$550

59.



60.

60. A nautical 3 1/2" x 1 3/4" ivory handle, inscribed collar, "Irish oak from British Frigate Augusta sunk off Fort Miflin on the Delaware River Dec. 23rd 1777", 33 1/4" O.L., 2 1/2" brass and iron ferrule
\$800-\$1,200



61. A British early 20th Century Brigg Touts cane, signed sterling Brigg collar, 34 1/2" O.L., metal ferrule
\$250-\$350

62. A late 17th Century pique 1 3/4" x 4" ivory handle with a lanyard hole, some acceptable damage, coin silver collar, massive 1 1/2" twig spur shaft, 37" O.L., 2 1/2" brass ferrule
\$600-\$900

63. A circa 1920 cloisonné 4" x 3 1/2" handle, brown malacca shaft, 34 1/2" O.L., horn ferrule
\$300-\$400

64. An Art Nouveau 5" x 1 1/4" ivory maiden, woven leather collar, snakewood shaft, 34 1/2" O.L., iron ferrule
\$500-\$700





65.

67.



65. A 20th Century 4 1/2" x 1 7/8" sterling silver snake and frog, ebony shaft, 36" O.L., brass ferrule
\$350-\$450

66. A Circa 1880 black forest 4 1/4" x 5 1/4" fantasy animal, vertebra stacked shaft, 36" O.L., metal ferrule
\$300-\$500

67. An early 20th Century college cane, 36" O.L., metal ferrule
\$250-\$350

68. A 4" x 3 1/4" ivory dog handle, circa 1890, hardwood shaft, 34 3/4" O.L., brass ferrule
\$400-\$600



68.

66.



69. A 2 1/4" x 1 1/4" late 19th Century ivory lion with two color glass eyes, silver collar, ebonized shaft, 35" O.L., metal ferrule
\$300-\$400

70.

70. A circa 1880 carved folk art cane which has about 75% of the shaft still covered in snakeskin, 36" O.L., no ferrule
\$300-\$500

69.



48.



71. A 5" x 1 1/2" ivory wildcat with two color glass eyes, silver metal collar, oak shaft, 36" O.L., bi-metal ferrule
\$500-\$600

71.



72. A late 19th Century carved Asian dragon with moveable wood ball in mouth, one piece naturally grown shaft and handle, 38" O.L., no ferrule
\$300-\$500

72.



73. A Nautical 2 1/4" x 1 1/2" whale's tooth handle, inlaid abalone disc atop, small baleen spacer, mother of pearl pyramid inserts (missing one), hexagonal to cylinder walnut shaft with M.O.P. inlays, 34" O.L., missing ferrule
\$350-\$450

73.



74. A carved and painted 2 1/2" x 3" 19th Century Moor with two color glass eyes, twig spur shaft, 34" O.L., metal ferrule
\$400-\$600

74.





76.

75. A carved 1914 Dartmouth College cane, white metal collar, hardwood shaft, 35" O.L., metal ferrule
\$200-\$300

75.

76. A carved 1930's 3 1/2" x 3" wild looking fantasy animal with two color red glass eyes and ivory claws, ornate gold-filled collar, twig spur exotic shaft, 36" O.L., metal ferrule
\$600-\$900



77. A 4" x 1 1/4" carved ivory rodent handle, white metal collar, hardwood shaft, 33" O.L., bi-metal ferrule
\$300-\$400

78. A Circa 1885 4 1/2" x 1 1/2" ivory lion, hallmarked British silver collar by Swaine & Adeney, stepped ebony shaft, 38" O.L., horn ferrule
\$600-\$800

79. A circa 1900 5" x 1 1/4" walrus ivory handle, small silver metal collar, ebonized shaft, 38" O.L., no ferrule
\$300-\$500

79.



78.



77.



80. An unusual circa 1870 ivory and horn end cap carved in the shape of an eagle, two color glass eyes, burl crook handle, leather on wood shaft, 36" O.L., metal ferrule
\$300-\$500



81.

81. A 4" x 1 1/2" ivory gar with two color glass eyes, ornate gold-filled buckle collar, honey malacca shaft, 36" O.L., metal ferrule
\$600-\$900



80.

82. A 4 1/4" x 1 1/2" ivory dog with two color glass eyes, silver buckle collar, mahogany shaft, 33" O.L., bi-metal ferrule
\$700-\$900

83. 1 1/2" x 1 1/2" ivory "Thousand Faces" handle, ribbed silver collar, cherry shaft, 33 3/4" O.L., brass ferrule
\$500-\$600

84. An Art Deco period sharkskin oval dress cane, ebony shaft, 35 1/2" O.L., horn ferrule
\$200-\$250

83.



82.

84.





85.



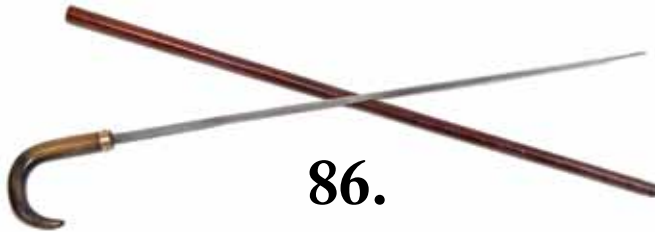
86.

85. A circa 1900 one piece carved folk art 2 ½" x 2 ½" man, lanyard holes, twig spur shaft, 35" O.L., no ferrule
\$400-\$500

86. A late 19th Century 4 ¼" x 4 ¾" horn handle, gold-filled studded collar, push button locking 26" blade sword cane, malacca shaft, 35" O.L., bi-metal ferrule
\$500-\$800

87. A late 19th Century tippler's stick which has compartments for the glass and also the vial, paint grained wood shaft, brass knob handle, 36" O.L., metal ferrule
\$350-\$450

88. An Art Nouveau 2 ½" x 4 ½" sterling hallmarked handle, flexible ebonized shaft, 37" O.L., ivory ferrule
\$400-\$500



86.

89. A mid 19th Century spring loaded candle cane, bamboo shaft, 34" O.L., brass ferrule
\$400-\$600



88.



87.



89.



90. An early 20th Century pipe system stick, natural wood shaft, 35" O.L., metal ferrule
\$250-\$350

91. An 11 1/2" mid 19th Century dagger cane, carved 2" x 1 3/4" lion handle with two color glass eyes, original brass eyelets, 33" O.L., missing ferrule
\$400-\$600

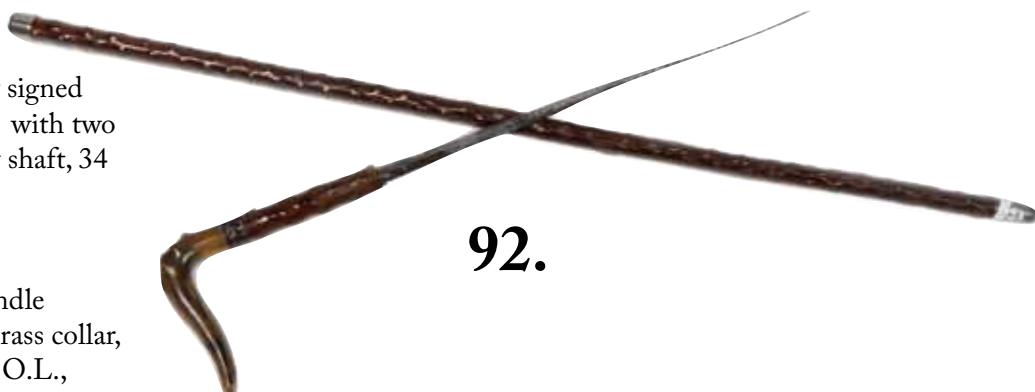
92. A circa 1865 4 1/2" x 2" horn sword cane with a 13" four sided blade, pushbutton locking mechanism, 2 brass collars, exotic wood shaft, 35" O.L., metal ferrule
\$500-\$600

93. An early 20th Century signed sterling 4 1/2" x 4" silver cat with two color glass eyes, mahogany shaft, 34 1/2" O.L., metal ferrule
\$400-\$600

94. A 1 1/2" x 1 1/2" ivory handle country cane, circa 1860, brass collar, twisted exotic shaft, 35 1/2" O.L., metal ferrule
\$250-\$350



91.



92.



94.



90.



93.

95.



95. A late 19th Century ivory elephant crook handle, carved ivory collar, exotic wood spacer, square silver collar with engraved conch shells, hardwood shaft, 37" O.L., ivory ferrule
\$500-\$600

96. An late 18th Century 1 3/8" x 1 1/2" whale's tooth handle, small silver metal collar, coin silver eyelets, twigspur shaft, 38" O.L., 3 1/4" iron ferrule
\$400-\$500

97. A Victorian 3" x 1 3/4" walrus ivory handle, gold metal collars, ivory spacer, partridge wood shaft, 36 1/2" O.L., bi-metal ferrule
\$400-\$500

98. 1 1/2" x 1 1/2" ivory die circa 1900, ivory collar, malacca shaft with lanyard holes, 36" O.L., 2" ivory ferrule with die marks
\$400-\$600



96.



97.



98.

99. An 1890 4" x 1 1/2" ivory lion and elephant, segmented full ivory twigspur shaft, 29 1/2" O.L., brass bullet ferrule
\$500-\$700



99.

100. An 1830's 1 1/2" x 1 3/4" ivory handle, silver collar inscribed "R. Fuller", pair of coin silver eyelets, exotic wood shaft, 36" O.L., 3 1/2" ferrule
\$400-\$600

101. A Victorian 3 1/2" x 2 3/4" ivory devil, ornate silver collar, ebonized shaft, 36" O.L., bi-metal ferrule
\$500-\$700

102. An early 20th Century arts and crafts cane with a bronze sand cast lost wax snake, Western exotic wood shaft, 36" O.L., metal ferrule
\$400-\$500

103. A 4" x 2 1/4" Mejjia ivory dragon, G.M. signed ornate gold-filled collar, mahogany shaft, 34" O.L., horn ferrule
\$600-\$700

102.



100.

101.



103.



105.



104.

104. 3 1/2" x 3/4" stag handle with a carved antler snake and skull, ribbed metal collar, natural branch shaft, 36" O.L., horn ferrule
\$400-\$600

105. A Victorian 3 1/2" x 6 3/4" ivory hunting handle, carved belt ivory collar, ebony shaft, 34" O.L., ivory and metal ferrule
\$600-\$900

106. A circa 1900 ivory and carved monkey 4" x 3" handle with ivory ears and two color glass eyes, ivory collar, maple shaft, 34" O.L., metal ferrule
\$300-\$500

107. A circa 1900 1 5/8" x 2" Asian silver handle, massive bamboo shaft carved with frogs and snakes, 35 1/2" O.L., bone ferrule
\$250-\$350



106.

107.



108. A mid 19th Century 1 3/4" x 1 1/8" engraved silver arbor handle with a 3 dimensional night, white enamel work below the arbor, gold ring lanyard holder, malacca shaft, 37" O.L., bi-metal ferrule
\$1,000-\$1,500

108.



109. A Circa 1900 3" x 1 1/2" silver bird with two color glass eyes, British hallmarks, silver collar, stepped partrigewood shaft, 35 1/2" O.L., metal ferrule
\$400-\$600

110. A circa 1900 safari horn trophy cane with a 4 1/2" x 1 3/4" exotic wood handle with m.o.p. disk atop, two horns join to make the shaft, 34" O.L., never had a ferrule
\$400-\$500

111. A carved mid 19th Century Continental folk cane of which the carving atop is 4" x 3", pair of gold eyelets, twigspur shaft, 34 1/2" O.L., small metal ferrule
\$400-\$500



109.



110.

111.





116.

112. A Circa 1900 2" x 5" ivory lizard with two color glass eyes, coin silver collar, oak shaft, 33" O.L., metal ferrule
\$500-\$600



113. A Victorian 5" x 4 1/4" ivory hunting handle, spiked silver collar, ebony shaft, 37" O.L., metal ferrule
\$500-\$600

112.

114. A pair of ivory mid 19th Century day canes
\$200-\$400

115. A pair of tortoise shell canes both in need of repair
\$400-\$500

116. An 1890 4" x 3" ivory monogrammed handle, partrigewood shaft, 31 1/2" O.L., ivory ferrule
\$250-\$350

113.



114.

115.



117. A circa 1925 3 1/2" x 2 1/4" ivory
3 piece handle with carved ladybug,
signed 14k collar, ebony shaft, 37"
O.L., horn ferrule
\$400-\$500

118. A 3" x 1 3/4" horn elephant circa
1900, signed sterling collar, painted
wood shaft, 34 1/2" O.L., bi-metal
ferrule
\$300-\$400

119. A mildly erotic 3" x 1 3/8" ivory
mermaid, 20th century, silver metal
collar, massive mahogany shaft, 39"
O.L., split bi-metal ferrule
\$800-\$1,200

120. A circa 1890 5" x 1 3/4" fantasy
ivory dragon bird, ribbed sterling
collar, exotic wood shaft, 36 1/2" O.L.,
metal ferrule
\$1,000-\$1,200

119.



117.



118.



120.





121.

121. An Art Deco 4" x 3" silver dog, ebony shaft, 36" O.L., bi-metal ferrule
\$400-\$600



123.

122. A folk art circa 1850 carved one piece natural branch cane, engraved coin silver cat and a pair of coin silver eyelets, 37" O.L., metal ferrule
\$350-\$450

123. A real African 9 1/2" x 2 1/2" carved horn handle, native painted exotic wood, mid 20th Century, 38" O.L., no ferrule
\$700-\$1,200

124. A carved 3" x 3" dog handle with two color glass eyes circa 1925, twigspur shaft, 36" O.L., metal ferrule
\$300-\$400

122.

124.

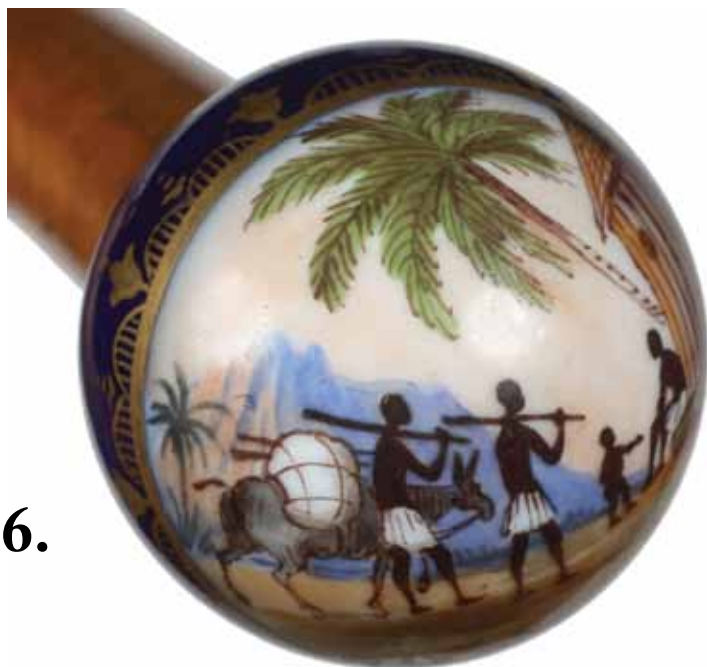


125. A nautical 3 ½" x 2 ½" naughty lady's leg, circa 1860, two baleen spacers, ¾" whalebone shaft, 33 ¾" O.L., no ferrule
\$800-\$1,200

126. An early 20th Century 1 ½" porcelain knob with painted desert scene, ornate gold-filled collar, Malacca shaft, 36" O.L., horn ferrule
\$500-\$700

127. A two piece circa 1870 carved 4 ½" x 3" dragon handle and no ferrule, 35" O.L., no ferrule
\$300-\$500

128. An Art Deco English hallmarked 4 ½" x 3 7/8" silver handle, small metal collar, hardwood shaft, 35 ½" O.L., metal ferrule
\$400-\$600



126.



127.



128.



125.



131.



129.

129. A 5" x 1 3/4" Victorian style carved wildcat with two color glass eyes, dated 1905 ornate silver collar, hardwood shaft, 33" O.L., 2" metal ferrule
\$500-\$600

130. A 3 1/2" x 1 3/4" walrus ivory dragon circa 1890 with two color glass eyes, two wire woven collars, 20" Malacca shaft, 59" woven leather whip and in working condition
\$500-\$1,000

131. A 1936 Dartmouth College Cane, very nice condition, 35 1/2" O.L., horn ferrule
\$200-\$300

132. A late 19th Century 4" x 4" Nubian and lion handle, ornate brass collar, one glass eye missing, dark Malacca shaft, 33" O.L., brass ferrule
\$700-\$1,000



132.



130.

133. A folk art one piece carved cane circa 1930, 95% original paint, two color glass eyes, 36 1/2" O.L., missing ferrule
\$500-\$700

134. A Brigg 3" x 3" silver handle, two color glass eyes, ebony shaft, 35" O.L., metal ferrule
\$500-\$800

135. A dated 1853 1 5/8" x 1 7/8" historical gold handle, engraved "Com. Truxton Baltimore 1797 U.S.Fr. Constellation", gold eyelets, massive mahogany shaft, 34 1/2" O.L., 1 3/4" bronze ferrule
\$1,500-\$2,500

136. A 2" x 1 3/4" French ivory automated monkey, both glass eyes and mouth move by pressing the rear of the monkey's head, small ivory ferrule, bamboo shaft, 36" O.L., missing ferrule
\$800-\$1,200



135.



136.



134.



133.

138.



137. A late 18th Century 3 ½" x 1 ½" tested gold handle, original lanyard with gold eyelets, honey malacca shaft, 39 ½" O.L., scalloped copper ferrule
\$1,800-\$2,500

138. A nautical relic with a ¾" x 1 ¼" silver knob which is engraved "Relic of Royal George, Sank 1782, Raised 1840, ornate carved upper shaft with a pair of silver eyelets, silver center collar, mahogany lower shaft, 35" O.L., brass ferrule
\$700-\$1,200


139. A R. & J. Beck, London, three draw 17" telescope with clear viewing, original engraved end cap and leather handle with braiding, original patented ornate brass collar, nautical woven under collar, brass eyelets, malacca shaft, 34 ½" O.L., brass ferrule
\$1,500-\$2,500

137.



139.





140. A 19th Century Narwhal cane
with a 2" elephant ivory handle, 36"
O.L., 3" metal ferrule
\$4,000-\$6,000



141.



141. A late 18th Century massive 2" x 2 1/4" ivory handle, very ornate silver collar, coin silver eyelets, silver cartouche attached to the shaft which appears to be "76" and a large elephant, 1" malacca shaft, 36" O.L., brass 4" ferrule
\$1,000-\$1,500

142. A late 19th Century 2 3/4" x 2" stag handle with two color glass eyes, woven leather collar, malacca shaft, 36" O.L., metal ferrule
\$500-\$700

143. A circa 1890 2 1/2" x 2 1/4" ivory cat, pair of ivory eyelets, honey malacca shaft, 35" O.L., horn ferrule
\$1,000-\$1,500



143.



142.



144. A mid 19th Century 19" four sided blade sword cane, natural twig spur shaft, silver collar, 35" O.L., horn ferrule
\$400-\$500

144.

145. A circa 1890 Japanese carved stag handle with two color glass eyes, signed sterling collar, sterling eyelets, twig spur shaft, 36" O.L., stag ferrule
\$500-\$600

146. A 1 ½" x 2" ivory Biblical character circa 1900, white metal collar, partridge wood shaft, 34 ½" O.L., metal ferrule
\$500-\$600

147. An early 20th Century 1 ¾" x 2 ¼" "Lizard Man" ivory handle, beaded metal collar, ebony shaft, 36" O.L., metal ferrule
\$600-\$800



145.



147.



146.





148.

148. An Art Deco 4" x 3 1/2" signed sterling fantasy bird, ebony shaft, 36 1/2" O.L., brass ferrule
\$400-\$600



149.

149. A circa 1880 4" x 2 1/2" automated dog with moveable ears and mouth, two color glass eyes and original belt collar, press button mechanism, 1" malacca shaft, 34 1/2" O.L., horn ferrule
\$800-\$1,000

150. A 20th Century 3" x 2 1/2" ivory African warrior, leather collar, cherry shaft, 33 1/4" O.L., no ferrule
\$300-\$500

151. A 5" x 1 1/2" ivory cat circa 1900, signed sterling collar with minor leaf damage, hallmarked English mid collar signed Kendall, partridge wood shaft, O.L. 34 1/2, metal ferrule"
\$500-\$600



151.

150.



152. A circa 1890 Japanese carved bamboo primate for Brigg of London, one piece cane with two color glass eyes, painted teeth, 37" O.L., metal ferrule
\$400-\$500

153. A early 20th Century 4 1/2" x 1 3/8" ivory snake and bug, silver metal collar, exotic wood shaft, 34 1/2" O.L., brass ferrule
\$500-\$700

154. A circa 1890 4 1/2" x 1 1/2" desert hunter, large signed sterling collar, snakewood shaft, 36" O.L., brass ferrule (damage to back right foot)
\$700-\$1,000



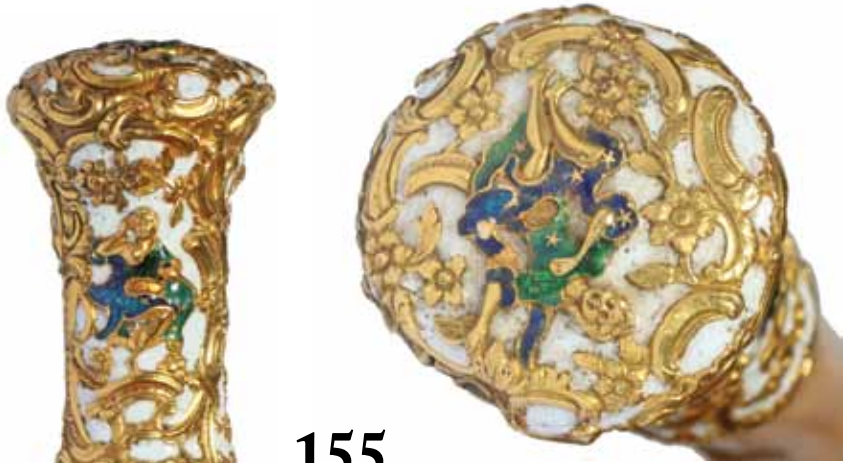
153.



152.



154.



155.

155. A late 17th Century gold and enamel 2 3/4" x 1 1/2" French handle, gold rosettes, minor damage to green enameling on the four ladies, malacca shaft, 47" O.L., prime example of an early court cane, very ornate 3 3/4" brass ferrule \$3,500-\$4,500



156. A late 18th Century court cane with an ornate gold filled handle, pair of gold eyelets, ornate gold filled center collar, thick malacca shaft, 49" O.L., 5" brass and iron ferrule

\$1,000-\$1,500

157. A circa 1800 court cane with an ornate 4" x 1 3/4" brass handle, pair of brass eyelets, ornate brass center collar, malacca shaft, 56" O.L., 12" brass ferrule

\$1,000-\$1,500

158. A 32" x 6.5" dozen cane stand with original finish, oval top with round bottom.

\$400-\$500

159. A circa 1870 nautical French 22" x 27.5" x 9.5" cast-iron cane and umbrella stand, marked for Corneau Freres Charleville

\$800-\$1200



157.

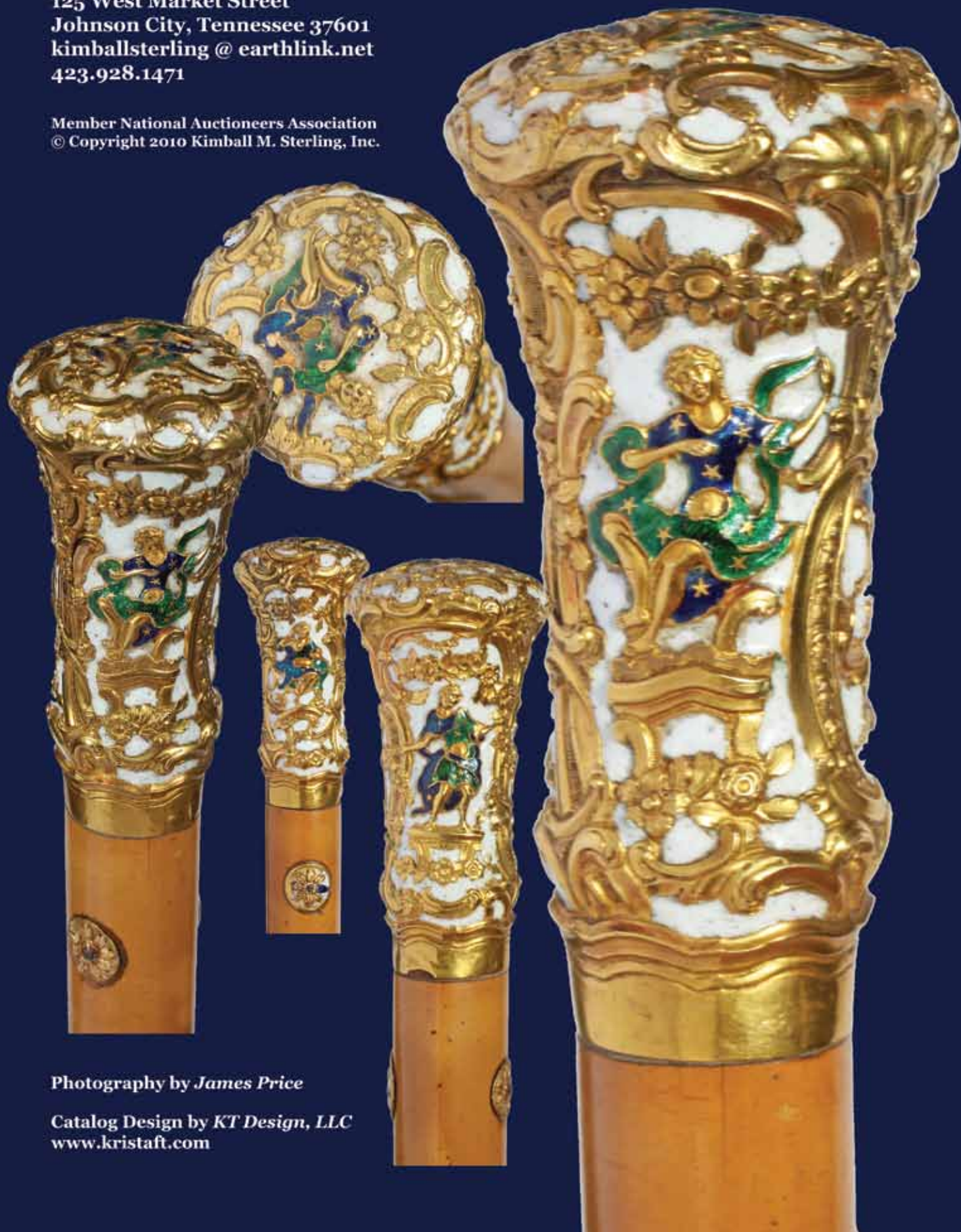
156.

158.

159.

Kimball M. Sterling, Inc. (TFL-1915)
125 West Market Street
Johnson City, Tennessee 37601
kimballsterling @ earthlink.net
423.928.1471

Member National Auctioneers Association
© Copyright 2010 Kimball M. Sterling, Inc.



Photography by *James Price*

Catalog Design by *KT Design, LLC*
www.kristaft.com