



Kimball & Victoria
Sterling
present the

Waylon J. Young
Estate Auction
to Benefit St. Jude Hospital

Sunday,
September 8th
11:00 a.m. EST

Plus selected Consignments

www.AuctionAuction.com

TERMS & CONDITIONS

1. Cash or check. A 20% buyers' premium will be added to the hammer price as part of the sale price for all bidders. Internet bidders will pay 23%. We reserved the right to hold purchases until the buyers checks clears if buyer is not known by us. Bank letter of credit is acceptable.

2. Mail or phone bids are accepted; the firm may require a deposit.

3. Kimball M. Sterling, Inc. has endeavored to catalog and describe the property correctly. All property is sold as is and neither the auction company nor the consignor will be responsible for descriptions, genuineness, provenance or condition of the property. No statement in the catalog made orally at the sale or otherwise shall be deemed to be a warranty, representation, or an assumption of liability.

4. In the event of any dispute between bidders, the auctioneer shall have total discretion to determine the successful bidder, in which his determination shall be final or to re-offer and resale the article in dispute. Title of the item or items purchased by the bidder will pass at the fall of the gavel and declaration of bidder. This is not an approval auction. All measurements are approximate.

5. Principal auctioneer: Kimball M. Sterling #2467. B. Elizabeth Sterling, auctioneer # 5757. Firm Kimball M Sterling Inc. TFL-1915

6. Bidders may bid live on the Internet by visiting <http://www.auctionauction.com> You may also view the auction at this site and bid by phone.

7. Communications:
Telephone 423-928-1471.
Fax 423-928-2816.
Cellular 423-773-4073, 423-773-4072.
Email kimballsterling@earthlink.net

8. Kimball M Sterling has worldwide shipping available. Mr. We do not ship protected items overseas but can put you in contact with a source that is very reliable and can handle all of your needs.

9. Kimball M. Sterling, Inc. will not be held responsible for bids received on the day of the auction, unexecuted absentee bids, phone bidders not contacted or slow Internet bids. Although we do attempt to get all bids executed problems do occur. There will be no recourse from the bidder. We will not be responsible for items left on our location for over 30 days.

10. Sale will be conducted at 125 West Market Street, Johnson City, Tennessee. 37604. Announcements day of the sale take precedence over pre-sale advertising. Any litigation that pertains to this auction will be conducted in the county of Washington in Tennessee and is agreed upon by registering for this auction.

11. Airport is the Tri-Cities Airport, which is approximately 20 miles from the gallery. Internet catalog and live bidding available at www.auctionauction.com Best Western Hotel: 423-282-2126. A very fine hotel which offers Sterling Auction a discount rate is the Carnegie Hotel 1216 W State of Franklin Rd, (423) 979-6400.

12. Please call for condition report on sale lots or email us. We do send out multiple photos by email of any lot in the auction. By registering for this auction you accept the terms.

13. Parking service is free.

Kimball & Victoria
Sterling
present the

Waylon J. Young
Estate Auction
to Benefit St. Jude Hospital

Sunday,
September 8th
11:00 a.m. EST

Plus selected Consignments

Preview:

Anytime before the auction by appointment

Saturday, September 7th

Noon until 2:00 p.m.

Sunday, September 8th

9:00 a.m.

Live on the internet at
LIVEAUCTIONEERS.COM

Two Time Winner of Best of Show
from the National
Auctioneers Association

Kimball M. Sterling Auction Gallery
125 West Market Street
Johnson City, Tennessee 37601
kimballsterling@earthlink.net
423.928.1471

www.AuctionAuction.com



1. Ivory Dress Cane

Ca. 1890-A large ivory knob with striations, hardwood shaft and no ferrule.

H. 1 3/4" x 1 3/4", O.L. 36"

\$200-\$300

2. Native American Cane

Ca. 1925-A woven leather handle with a glass disc atop, large horse hair collar handle, woven leather and horse hair middle shaft, woven leather lower shaft and a metal ferrule.

H. 1 3/4" x 1 3/4", O.L. 35"

\$400-\$600

3. Horn Dress Cane

Ca. 1870-A natural dark horn, signed sterling collar, bamboo shaft and a metal ferrule.

H. 4 1/4" x 3 1/2", O.L. 35 1/2"

\$250-\$300

4. Opium Pipe Cane

Ca. 1925-A brass enclosure on a wooden bowl, wooden spool shaft and a brass mouth piece ferrule.

H. 4 1/2" x 1", O.L. 36"

\$400-\$600

5. Trench Art Cane

Ca. 1915-A group of 41 caliber shells and a stopper ferrule.

H. 6 1/2" x 1 1/4", O.L. 31"

\$200-\$350

6. Fancy Wood Dress Cane

Ca. 1930-Stacked wood disc, inlaid bands of bakelite and a unusual brass ferrule.

H. 5" x 1 1/2", O.L. 35"

\$200-\$300



4.

2.

1.

6.

5.

3.



11.



9.



7. Horse Measure Cane

Ca. 1935-A hickory one piece shaft, metal and brass measure with working level and a metal shaft. O.L. 37 1/2" \$200-\$300

8. Folk Art Fist Cane

Ca. 1840-A blocky carved fist, copper collar, natural grown shaft and a 3 1/2" bone ferrule. H. 2 1/4" x 1 3/4", O.L. 36 1/2" \$300-\$500

9. Nautical Whalebone Cane

Ca. 1900-A segmented whalebone cane with horn spacers and a bone handle, stopper ferrule. H. 4 1/2" x 1 1/4", O.L. 37" \$500-\$600

10. Nautical Whalebone Cane Architectural Cane

Ca. 1860-A carved ivory handle with a piece of M.O.P. disc atop, hexagonal carved handle with tropical wood inserts, scribed wood collar, whalebone shaft with two spiral directions and no ferrule. D. of shaft 5/8", H. 1 1/4" x 6 1/2", O.L. 34" \$700-\$1,000

8.



7.



10.



11. Nautical Whalebone Cane

Ca. 1860-Whale's tooth handle with a small silver metal spacer, baleen collar, extremely smooth 7/8" bone shaft with one baleen diamond inlaid and a brass ferrule. H. 3 1/2" x 2 1/2", O.L. 33" \$700-\$1,000

12. Nautical Fist and Snake Cane

Ca. 1900-Carved whale's tooth handle with a snake which has baleen eyes, baleen ring spacer, exotic wood shaft and a bone ferrule.

H. 3 1/2" x 1 1/2", O.L. 36 1/2"

\$700-\$1,000

13. Horn Dress Cane

Ca. 1925-A horn handle possibly rhino, with bug bites throughout, inscribed silver metal collar, malacca shaft and a horn ferrule.

H. 4 1/2" x 3", O.L. 35 1/2"

\$150-\$250

14. English Shooter's Cane

Ca. 1935-A nice leather over metal seat handle, hardwood shaft and a metal disc ferrule.

O.L. 33"

\$200-\$300

15. Burl Country Cane

Ca. 1870-A one piece burl cane with various brass circles inleaid, and a metal ferrule.

O.L. 36"

\$100-\$200

16. Ivory Dress Cane

Ca. 1880-An ivory handle, coin silver collar, exotic wood shaft and a silver metal ferrule.

H. 1 1/4" x 1 1/2", O.L. 36"

\$200-\$300

17. Nautical Woven Bone and Baleen Cane

Ca. 1850-A woven Turk's knot handle, baleen and bone upper shaft, woven lower shaft with noticeable damage at each joint and no ferrule.

H. 1 1/2" x 4", O.L. 36"

\$400-\$600



13.



12.



14.

15.



16.



17.





18.

18. Ivory Dress Cane

Dated 1857-Carved ivory handle, unmarked gold presentation collar, nice exotic wood shaft and a 3" metal ferrule. H. 2 3/4" x 4", O.L. 32 1/4" **\$300-\$400**



19.

19. Ivory Rose Dress Cane

Ca. 1875-A two piece ivory handle with a beautifully carved rose, gold filled collar, malacca shaft and a metal ferrule. H. 3 1/4" x 3 1/2", O.L. 34" **\$250-\$350**



20.

20. Whalebone Dress Cane

Ca. 1860-A small whale's tooth handle, 1/4" whalebone shaft and no ferrule. H. 1" x 1 1/4", O.L. 32 1/2" **\$400-\$600**



21. Gold Filled Dress Cane

Dated 1886-A nice decorative handle, which has various inscriptions, rich snakewood shaft and a metal ferrule. H. 3 1/4" x 1 1/4", O.L. 35 1/2" **\$250-\$350**



22.

22. Nautical Whalebone Cane

Ca. 1865-A carved whale's tooth handle which has an early repaired crack, two baleen spacers, 1/4" whalebone shaft and no ferrule. H. 2 1/2" x 1", O.L. 34" **\$400-\$600**



23.

23. Ivory Dog Dress Cane

Ca. 1870-A walrus ivory handle, ornate brass collar, malacca shaft and no ferrule. H. 4" x 4", O.L. 33 1/4" **\$400-\$600**



21.

24. Shark Vertebrae Cane

Ca. 1925-A black horn handle, shark bone shaft with horn spacers and a worm eaten horn ferrule. H. 1 3/4" x 1 1/2', O.L. 35" **\$250-\$350**

24.



25. Ivory Dress Cane

Ca. 1930-A large ivory handle, carved thick ebony shaft and a horn ferrule. H. 5" x 1 3/4", O.L. 34" **\$300-\$500**

26.



25.

26. Umbrella Cane

Ca. 1935-Finished hardwood handle and faux bamboo shaft, umbrella is fine but outer cover is worn and a horn ferrule. O.L. 26" **\$200-\$300**

27. Primitive Folk Cane

Ca. 1850-A carved bone handle with some carving, hardwood American Oak carved shaft and no ferrule. H. 1 1/2" x 1 1/4", O.L. 36" **\$200-\$400**

28. Horse Measure Cane

Ca. 1935-A one piece hardwood shaft with a brass and metal working horse measure and level and a metal ferrule. O.L. 39" **\$200-\$300**

29. Makila Defensive Cane

Ca. Dater 1926-A typical example of this genre with a nice horn handle, woven leather lower handle with minor damage and a typical brass pike ferrule. O.L. 34 1/2" **\$300-\$400**

27.



28.



29.



30.

31.

30. Sewing System Cane

Ca. 1930-A brass compartment cane which holds two bobbins and a needle case, hardwood shaft and a metal ferrule. H. 2 1/2" x 3/4", O.L. 31"
\$200-\$250

31. Three Bull Penis Canes

\$200-\$300

32. Three Stag Canes

\$250-\$400

33. Seven Assorted Dress Canes

\$300-\$500

34. Thirteen Leather Disc Canes

\$300-\$500

35. Silver Dress Cane

Ca. 1900-A hallmarked A.S.N. silver handle, palm wood shaft and a metal ferrule. H. 1 1/2" x 2", O.L. 36"
\$250-\$300



32.

33.



34.

35.



36. Victorian Horn Dress Cane

Ca. 1870-A nicely carved horn handle with silver attachments, engraved sterling collar, exotic wood shaft and a metal ferrule.
H. 4 1/4" x 1 3/4", O.L. 37"
\$300-\$450



36.



37. Pewter Horse and Knight Cane

Ca. 1925-A finely cast pewter handle, ornate silver-plate collar, ebonized shaft and a metal ferrule.
H. 1 1/2" x 2 1/2", O.L. 34"
\$250-\$300



37.



38.

38. Sterling Dress Cane

Ca. 1900-A cast sterling silver handle with two deer in high relief, signed sterling collar, hardwood flexible shaft and a metal ferrule.
H. 1 3/8" x 3", O.L. 35"
\$300-\$400

39. Gold-filled Dress Cane

Ca. 1880-An ornate handle "signed Hull", three gold-filled strip inlays, a six sided faux snakewood shaft and an ornate brass ferrule.
H. 1 3/4" x 1 3/4", O.L. 32 1/4"
\$200-\$300

39.



40. Toledo Dress Cane

Ca. 1910-Nice damascene work throughout in fine condition, small gold metal collar, thick ebony shaft and a horn ferrule.
H. 1 3/4" x 2", O.L. 36"
\$400-\$500

40.



41. Pig Ivory Country Cane

Ca. 1890-An ivory tusk handle, white metal collar, natural twig shaft and a metal ferrule. H 4" x 1 3/4", O.L. 36"
\$250-\$350

41.





42.

42. Regimental Style Silver Dress Cane

Ca. 1925-A signed "Brigg" hallmarked English ball handle, gutta percha shaft and a metal ferrule.
H. 1 3/8" x 2", O.L. 30"
\$200-\$300



43.

43. Gambler's Silver Cane

Ca. 1885-A hallmarked British coin silver handle with two bone dice, hinged monogrammed top, thick malacca shaft and a horn ferrule.
H. 3 1/2" x 1 1/8", O.L. 36"
\$600-\$700



45.

44. Silver Gambler's High Relief Cane

Ca. 1900-A heavy set silver handle container cane with high relief flowers and foliage, screw top, two bone dice, early gold metal collar, exotic wood shaft and a metal ferrule.
H. 1" x 3", O.L. 35 1/2"
\$900-\$1,000



46.

45. Russian Inlaid Dress Cane

Ca. 1900-A very ornately inlaid Russian dress cane with various metal inlays throughout 70% of the cane, exotic fruit wood shaft and a metal ferrule.
O.L. 36"
\$400-\$600



44.

46. Asian Silver Dress Cane

Ca. 1930-The handle has tigers, goats, trees and other foliage, done in high relief, ebony shaft and a stag horn ferrule.
H. 5 1/2" x 3", O.L. 36"
\$250-\$350



47. Glass Eye Dress Cane

Ca. 1925-A paint decorated and carved wood handle with a two color glass eye atop, ornate silver metal collar, chip carved hardwood shaft and a stag ferrule.

H. 2 1/4" x 2 1/2", O.L. 36"

\$200-\$300



47.

48. Asian Silver Dress Cane

Ca. 1930-A high relief casting of various Hindu Gods, silver metal collar, mahogany shaft and a horn ferrule.

H. 1 1/4" x 3", O.L. 37 1/2"

\$200-\$300



48.

49. Silver and Snake Country Cane

Ca. 1890-Poured silver over burl with a coiled snake, natural branch shaft and a metal ferrule. O.L. 35"

\$200-\$300



49.

50. Bone Rattle Cane

Ca. 1900-A unique carved bone handle with one rattle ball within, ivory disc atop, brass collar, hardwood shaft and a metal ferrule.

H. 1 1/4" x 3 3/4", O.L. 34"

\$200-\$300



50.

51. Ivory "Ugly" Man Cane

Ca. 1910-A nicely carved portrait cane, ribbed ivory collar, malacca shaft and an ivory ferrule.

H. 2" x 1 1/2", O.L. 32 3/4"

\$350-\$500



51.

52. Ivory Fist and Snake Cane

Ca. 1890-A nicely carved handle of this genre, silver metal collar, exotic inlaid hardwood shaft and a metal ferrule.

H. 1 1/2" x 1 1/4", O.L. 35 1/2"

\$300-\$400



52.



53.



54.



55.

57.



56.



58.



53. Damascene Dress Cane

Ca. 1900-A nice example with gold work throughout, rich mahogany shaft and a metal ferrule. H. 4 1/4" x 2", O.L. 36" \$400-\$600

54. Falconer Silver Watch Cane

Dated 1823-Both dial and coin silver case are dated, "G. Falconer Hong Kong and London", hinged top on silver handle, British hallmarked silver collar, hardwood shaft and no ferrule. H. 1 3/4" x 2 1/2", O.L. 34 1/4" \$500-\$700

55. Gold-filled Dress Cane

Ca. 1890-A high relief gold-filled handle with minor dints and dings, carved ebonized shaft and a metal ferrule. H. 1 5/8" x 4", O.L. 35" \$250-\$350

56. Inlaid Dress Cane

Ca. 1925-A silver metal inlaid handle and partial shaft, matching collar, tropical wood and a metal ferrule. H. 4 1/2" x 6", O.L. 35 1/2" \$250-\$350

57. Ornate Silver Dress Cane

Ca. 1890-An unsigned sterling handle with high relief flowers, minor dints and dings to the top, small silver collar, palm shaft and a horn ferrule. H. 1 1/2" x 4 1/2", O.L. 38" \$250-\$400

58. Ivory Monkey Cane

Ca. 1900-Carved ivory ape, ebony shaft and a metal ferrule. H. 1 1/2" x 2", O.L. 34" \$350-\$450

59. Silver Dress Cane

Ca. 1890-An ornate silver presentation which is marked 800 silver, thick ebony shaft and a horn ferrule.

H. 4 1/4" x 2 1/2", O.L. 38"
\$250-\$400



60.

60. Ivory Dog Cane

Ca. 1885-A carved ivory dog with two color glass eyes and pinched ears, woven silver collar, tiger maple shaft and a metal ferrule.

H. 2 1/2" x 2", O.L. 34"
\$400-\$600



59.

61. Silver Dress Cane

Ca. 1890-A high relief ornate silver handle, exotic wood shaft and a metal ferrule.

H. 3/4" x 2 1/2", O.L. 36"
\$200-\$300



61.

62. "Vanadium" Dagger Cane

Ca. 1900-An unusual snakewood handle and shaft which contains a 8 1/2" signed gambler's dagger, blade is 4 1/2", and a 3" brass ferrule. O.L. 38"
\$400-\$500



62.

63. Silver Tippler's Cane

Ca. 1885-An unsigned sterling handle, permanently attached glass vial with screw top within the shaft, thick hardwood shaft and a horn ferrule.

H. 1 1/2" x 1 1/4", O.L. 35"
\$300-\$450



63.



64. Prospector's Cane

Ca. 1880-An unusual combination of bone, ivory and buffalo horn, carved ivory head, ornate silver collar, paint grained tree bark shaft and an unusual brass 7" ferrule.
H. 5" x 3", O.L. 35"
\$500-\$600

65. Ivory Nautical Cane

Ca. 1875-A carved ivory handle of a shipmate, malacca shaft and a 2" horn ferrule.
H. 5" x 1 1/2", O.L. 33 1/2"
\$400-\$500

66. Bone Compartment Cane

Ca. 1900-A unique carved bone handle which has a removable top, probably a pomander, silver metal collar, ebony shaft and a horn ferrule.
H. 5 1/2" x 1 1/8", O.L. 39 1/2"
\$300-\$400

67. Ivory "Caning" Cane

Ca. 1875-A stylized ivory handle probably from Singapore, small brass collar, flexible bamboo shaft used for caning and a bone ferrule.
H. 1 1/2" x 6 3/4", O.L. 34"
\$250-\$350

68. Silver and Bone Dress Cane

Dated 1881-Hallmarked M.K. 84, probably Russian, chip carved hardwood shaft and a stag ferrule.
H. 4 1/2" x 1 1/4", O.L. 35 1/2"
\$250-\$350

69. Scrimshaw Nautical Cane

Ca. 1840-A carved whalebone example with cross hatching and foliage carving, small baleen collar, full whalebone shaft and no ferrule.
H. 4" x 2 1/2", O.L. 36"
\$1,000-\$1,500



70. Nautical Ivory Cane

Ca. 1870-A carved whale's tooth handle with baleen spacers, scrimshaw work with the name R. L. Baker, Odd Fellows style ivory chain, half bark malacca shaft and a brass ferrule.

H. 4 1/2" x 4 1/2", O.L. 34 1/2"
\$500-\$700



70.

71. Nautical Fist Cane

Ca. 1885-A stylized carved fist and egg, baleen spacer, thick ebony shaft and a 2" stag horn ferrule.

H. 3" x 1 3/8", O.L. 36"
\$500-\$600



71.

72. Scrimshaw Child's Cane

Ca. 1880-Small ivory handle, ivory eyelets, hardwood shaft and no ferrule.

H. 1 1/4" x 1 1/2", O.L. 27 3/4"
\$100-\$150

73.

73. Stag Sword Cane

Ca. 1800-Well formed stag handle, coin silver collars and eyelets, 13" blade with blood groove, malacca shaft inscribed "James G. Woven, Fall River M.S." and a 3 1/4" brass ferrule.

H. 1 1/2" x 2", O.L. 34 1/2"
\$700-\$900



72.

74. Ivory Dress Cane

Ca. 1850-A carved ivory gentleman, ivory collar with scrimshaw work, 1" thick malacca shaft and a metal ferrule.

H. 3" x 2 1/4", O.L. 37"
\$600-\$800

74.



75. Porcelain Stanhope Cane

Ca. 1900-A fired porcelain handle, classical male and female nude statue Stanhope, hardwood shaft and a metal ferrule.

H. 1 3/4" x 1 3/4", O.L. 32"
\$250-350

75.





77.

76.

76. Ivory Dress Cane

Ca. 1880-A high relief carving of a deer and foliage, two coin silver eyelets, thick exotic shaft and a metal ferrule.
H. 1 1/2" x 2 1/2", O.L. 35"
\$400-\$600

77. French Ivory Shadow Cane

Ca. 1880-A nice example of a Napoleon shadow cane, silver metal collar, carved lanyard holes, malacca shaft and a worn metal ferrule.
H. 1 1/4" x 2", O.L. 31"
\$400-\$500

78.



78. Ivory Tippler's Cane

Ca. 1890-A nice example with a removable 17" glass vile with its original cork stopper, hardwood hollow shaft and a removable ferrule which also has a matching glass vile.
H. 1" x 1 1/2", O.L. 35"
\$300-\$450

79.



79. Solingen Sword Cane

Ca. 1870-A 19" signed German blade with a working pushbutton and locking mechanism, brass collars, exotic twig spur shaft and a metal ferrule.
H. 5 1/2" x 7", O.L. 36"
\$500-\$600

81.



80.

80. Asian Silver Umbrella

Ca. 1920-A cast high relief silver handle, silk working umbrella, bamboo shaft and a metal ferrule. O.L. 34 1/2"
\$100-\$150

81. Stag Horn Country Cane

Ca. 1870-Probably Elk, woven silver collar, oak faux bamboo shaft and a pike ferrule.
H. 6" x 2 1/4", O.L. 35"
\$150-\$250

82. Umbrella System Cane

Ca. 1935-A telescoping cherry stained hardwood umbrella cane in fair condition. O.L. 35"
\$100-\$150



83.

82.

83. Saloon Leg Whistle Cane

Ca. 1870-A silver metal handle which has two holes used for an expert whistler, bamboo shaft and a metal ferrule.
H. 3 1/4" x 2", O.L. 33 1/4"
\$300-\$400

84. Black Forest Comical Cane

Ca. 1935-A carved handle with a rear pushbutton that operates the lower jaw and the bouncing of the head, silver metal collar, malacca shaft and a metal ferrule.
H. 3 1/2" x 2", O.L. 32 1/2"
\$350-\$450



85.

85. Bulldog Glove Holder Cane

Ca. 1880-A carved briar handle with two color glass eyes, push mechanism on upper throat to make the jaw move, silver metal collar malacca shaft and a brass ferrule.
H. 2 3/4" x 2 3/4", O.L. 36"
\$400-\$500

86. Gold-filled Dress Cane

Ca. 1890-A presentation handle with dents atop, ebony shaft and a metal ferrule.
H. 1 1/2" x 2 3/4", O.L. 36"
\$200-\$300



86.

84.



87.



88.

87. Ivory Ladies' Hand Cane

Ca. 1930-A detailed carving, gold metal collar with a 1/2 ct. genuine diamond, unique sculptured round and oval hardwood shaft and no ferrule. Probably a commemorative piece for a deceased love.
H. 3 1/2" x 1 3/4", O.L. 38"
\$800-\$1,200

88. Group of Four Canes
\$100-\$200



90.

89. Three Sword Canes
\$200-\$300



89.

90. Group of Canes
\$100-\$200

91. Three Pig Ivory Canes
\$300-\$400

92. Three Glass Canes
\$150-\$250

93. Three Alligator Canes
\$300-\$500



91.



92.



93.

94. Assorted Cane Lot
\$300-\$500

**95. Nineteen Folk and
Country Canes**
\$250-\$400

**96. Seventeen Folk and
Country Canes**
\$250-\$400

**97. Eighteen Crook
Handle Canes**
\$100-\$200

**98. Group of Twenty One
Canes**
\$200-\$400

**99. Group of Twenty Six
Canes**
\$200-\$400

**100. Group of Twenty
Two Canes**
\$200-\$300

94.



95.



96.



98.



97.



99.



100.



101.



101. Five Ivory and Bone Dress Canes
\$400-\$600

102.



102. Five Sword Canes
\$300-\$500

103. Seven Snake Canes
\$300-\$500

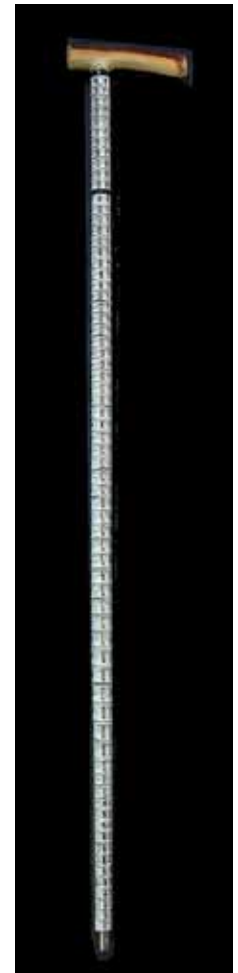
104. Fourteen Assorted Canes
\$200-\$300

105. Nautical Dress Cane
Ca. 1920-Carved ivory handle, horn and shark vertebrae spacer shaft and a brass ferrule. H. 4 1/2" x 1 1/8", O.L. 32 1/2"
\$250-\$300

104.



105.



103.



106. Ivory Elephant in a Tree Cane

Ca. 1910-A very unusual ivory elephant with horn eyes, prancing on four branches of a unique carved tree trunk ebony shaft and an ivory ferrule.

H. 4" x 2 1/2", O.L. 36"

\$1,500-\$2,000



106.

107. Highly Carved Ivory Dress Cane

Ca. 1890-A unique deep carved ivory handle, ivory band collar, exotic wood shaft and an ivory ferrule.

H. 1 3/4" x 5 1/4", O.L. 36"

\$400-\$500



107.

108. Asian "1000 Face" Ivory Cane

Ca. 1890-A nicely carved handle with various size heads, ivory collar, exotic wood shaft and a stag horn ferrule.

H. 1 1/2" x 1 3/8", O.L. 35 1/2"

\$400-\$500



108.

109. Ivory Grape Carving Cane

Ca. 1900-A carved cluster of ivory grapes and leaves, exotic wood shaft and an ivory ferrule.

H. 1 3/4" x 5 1/4", O.L. 36 1/2"

\$250-\$350



109.

110. Fine Niello Silver Dress Cane

Ca. 1910-Much attention has been paid to the poppies on the handle, polished silver collar, very rich snakewood shaft and a metal ferrule.

H. 4" x 2 1/2", O.L. 36"

\$600-\$700

110.

112.



113.



114.



115.



111.



116.

111. Horn Dress Cane

Ca. 1910-Carved horn handle which is possibly rhino, horn inserts on twig spurs, British hallmarked silver collar, faux bamboo hardwood shaft and a metal ferrule.

H. 2 1/2" x 5 1/4", O.L. 36"

\$300-\$400

112. Ivory Bulldog Cane

Ca. 1910-A well carved ivory dog with glass eyes, signed sterling collar, exotic wood shaft and a metal ferrule.

H. 1 3/4" x 2", O.L. 35 1/2"

\$500-\$600

113. Porcelain Dress Cane

Ca. 1890-A paint decorated porcelain handle, two ornate gold filled collars, ebony shaft and a metal ferrule.

H. 1 3/8" x 6 1/2", O.L. 36"

\$400-\$600

114. Civil War Folk Art Cane

Ca. 1880-A finely carved wood handle of a soldier with two color glass eyes, small brass collar, hardwood shaft and a metal ferrule.

H. 2" x 2 3/4", O.L. 35"

\$300-\$400

115. Inuit Ivory Fox Cane

Ca. 1915-A carved walrus ivory handle of a fox with baleen eyes, exotic wood shaft and a horn ferrule.

H. 1 1/4" x 5 1/2", O.L. 36"

\$350-\$500

116. Victorian Ivory Dress Cane

Ca. 1870-A substantial ivory carved handle, exotic wood shaft and a horn ferrule.

H. 4" x 1 3/4", O.L. 36"

\$300-\$400

117. Gold and Ivory Horse Hoof Cane

Ca. 1900-A unique presentation of this subject matter which also has a gold horseshoe attached, ornate gold collar, rich mahogany shaft and an ivory ferrule.

H. 4 1/2" x 1 1/4", O.L. 35 1/2"

\$600-\$700



119.

118. Ivory Horse Cane

Mid 20th Century-A pig ivory handle with three carved horses and six abalone disc, ivory collar, well grained exotic wood shaft and a horn ferrule.

H. 5" x 3", O.L. 36"

\$500-\$600



118.

117.

119. Ivory and Silver Horse Cane

Ca. 1875-A nice early example with two color glass eyes, ornate sterling bridal and bit, ornate silver collar, thick snakewood shaft and a metal ferrule.

H. 4 1/2" x 1" x 1 3/4", O.L. 35"

\$1,800-\$2,000



120. Black Forest Cane

Ca. 1900-A highly carved Forest cane with birds, deer, foxes and dogs, one piece hardwood shaft and a metal ferrule. O.L. 36"

\$250-\$350



121. Scrimshaw Ivory Nautical Cane

Ca. 1880-Carved whale's tooth handle with a large baleen or spacer, ivory collar, thick mahogany shaft and a bone ferrule. H. 1 3/4" x 2", O.L. 37"

\$1,000-\$1,200

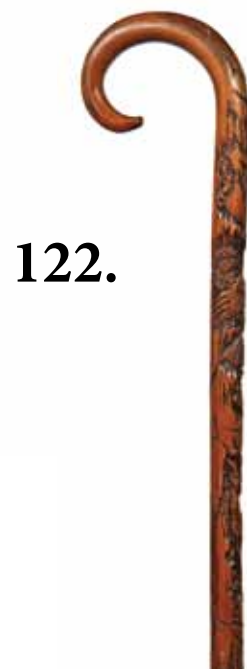


121.

122. Scrimshaw Ivory Cane

Ca. 1875-A nice whale's tooth handle with a baleen spacer which has a point of another tooth as an end cap, small ivory collar, thick ebony shaft and a stag horn ferrule. H. 7" x 2 3/4", O.L. 35 1/2"

\$1,000-\$1,200



122.

120.



123.



124.



126.



125.

128.



123. Trench Art Military Cane

Ca. 1920-A unique handmade cane with 50 cal. machine gun shells and a rubber stopper.

H. 6" x 1 1/4", O.L. 35"

\$250-\$350

124. Ivory Dress Cane

Ca. 1830-An early carved ivory handle, probably Biblical, small inset eyes, ivory collar, natural Oak shaft and a metal ferrule.

H. 4" x 2", O.L. 35 1/2"

\$1,000-\$1,500

125. Ivory "1000" Faces Cane

Ca. 1900-A nicely carved handle with an oriental cartouche signature, ornate gold filled collar, exotic wood shaft and a metal ferrule.

H. 7 3/4" x 3/4", O.L. 35 3/4"

\$500-\$600

126. Ivory Gambler's Cane

Ca. 1900-A massive ivory handle with numbers atop and a slow moving pointing hand, massive repousse lower silver handle, thick oak shaft and a metal ferrule.

H. 2 1/4" x 3 3/4", O.L. 35 1/2"

\$700-\$1,000

127. Porcelain Cherub Dress Cane

Ca. 1900-A hand decorated porcelain dress cane, two gold-filled collars, ebony shaft and a metal ferrule.

H. 1 1/2' x 6", O.L. 36"

\$500-\$600

128. Ivory Religious Staff Cane

Ca. 1920-A massive religious carving upon an ebony and ivory inlaid shaft with an ivory ferrule. H. 6" x 2", O.L. 54"

\$1,500-\$1,800

127.



129. Sword Cane

Ca. 1885-A Gutta Percha handle and shaft, brass collar, 8" engraved blade and a very unusual brass and metal ferrule. O.L. 35"
\$400-\$600

130. Ivory Alligator Cane

Twentieth Century-A carved pig ivory tusk with a full length gator, signed sterling collar, ebony shaft and an ivory ferrule.
H. 6" x 2", O.L. 37"
\$800-\$1,000

131. Whale's Tooth Knob

Ca. 1890-A large whale's tooth knob, ivory collar, ebonized shaft and a metal ferrule.
H. 2" x 2", O.L. 36"
\$500-\$600

132. Ivory Sword Cane

Ca. 1810-Ivory knob handle, coin silver collars and eyelets, seventeen inch triangular blade with gilding, signed D. Gilauberg, N.Y., stepped malacca carriage shaft and a 4" metal ferrule.
H. 1 1/2" x 2", O.L. 35 1/4"
\$800-\$1,200

133. Ivory Horse Cane

20th Century-A nice classical carving of three horses with horn eyes, ornate silver collar, exotic wood shaft and a stag ferrule.
H. 4" x 1 3/4", O.L. 36"
\$1,500-\$1,600

134. Inuit Ivory Cane

Ca. 1935-A stylized carved walrus tusk with abalone inlays, signed sterling collar, exotic wood shaft and a stag horn ferrule.
H. 4 1/2" x 2", O.L. 36"
\$700-\$900



130.



129.



134.



133.

132.

131.



137.



135.

135. Ivory Grey Hound Cane

Dated 1895-A finely carved dog with two color glass eyes, signed and dated silver presentation collar, thick malacca shaft and a metal ferrule.

H. 3 1/4" x 2 1/2", O.L. 37 1/2"
\$1,200-\$1,500

136. Ivory Dress Cane

Ca. 1880-Well aged ivory handle, silver collar, and eyelets, lignum vitae wood shaft and a 3" brass ferrule. H. 1 1/2" x 1 3/4", O.L. 35"
\$300-\$500

137. Massive Gothic Ivory Cane

20th Century-A most unusual carving, probably of the angel of death, nice patina, signed sterling collar, 1 1/8" thick malacca shaft and a horn ferrule.

H. 7" x 2 1/4" x 2 1/4", O.L. 36 1/2"
\$3,500-\$4,000

138. Whalebone Nautical Cane

Ca. 1880-A nice nautical presentation, hallmarked British collar, whalebone shaft and a metal ferrule.

H. 4" x 1 5/8", O.L. 36"
\$1,200-\$1,500

139. Dartmouth Indian Cane

Ca. 1930-A nice example of this college cane, silver metal collar, hardwood shaft and a metal ferrule. H. 3 3/4" x 2", O.L. 35"
\$250-\$350

140. Ivory Monkey Cane

Ca. 1910-A carved ivory monkey with pilot's glasses and to color glass eyes, ornate British hallmarked collar, exotic wood shaft and a metal ferrule.

H. 3 1/4" x 1 3/4", O.L. 36"
\$1,100-\$1,300



138.



139.



140.



136.

141. Ivory Lobster Claw Cane

20th Century-A beautiful fossilized ivory carving with deep brown toning, signed sterling collar, exotic wood shaft and a metal ferrule. H. 4" x 2", O.L. 36 1/2" **\$800-\$1,200**



144.

142. Compass System Cane

Ca. 1930-A brass "Baker", compass cane with a working level, ebonized shaft and a metal ferrule. O.L. 34 1/2" **\$300-\$400**



142.

143. Bare Breasted Ivory Cane

20th Century-A unique ivory carving of a lady in an exotic wood shawl and head piece, one breast is exposed, ornate silver metal collar, exotic wood shaft and a horn ferrule. H. 3 1/4" x 1 1/2", O.L. 36" **\$600-\$900**



143.

144. Ivory Cat's Fishing Cane

Ca. 1880 carved ivory handle with five cats cooking, playing guitar, fishing, camping etc., ornate silver metal collar, thick malacca shaft and a 4" brass ferrule. H. 4 1/2" x 1 3/4", O.L. 34" **\$2,500-\$3,000**



141.

145. Race Horse Silver Dress Cane

20th Century-A nice sterling casting of two horses, neck and neck, horn handle, sterling collar, ebony shaft and a horn ferrule. H. 5 1/2" x 3", O.L. 37" **\$500-\$700**



146.

146. Ivory Eagle Cane-20th Century

Fine carving of a stylized eagle with two color glass eyes, signed sterling collar, ebony shaft and a metal ferrule. H. 3 1/2" x 2", O.L. 36" **\$800-\$1,200**



145.



149.



148.



147.



151.



152.

150.



152.

147. Makila Defensive Cane

Ca. 1920-A nice example in fine condition of this genre of cane, horn handle with a "Skual Herra", enamel disc atop with minor damage, leather handle in original pike ferrule. O.L. 35"
\$250-\$350

148. Ivory Dog Cane

Ca. 1920-Carved ivory handle with three different dogs, all with glass eyes, a presentation silver collar to "The Jamaun Club", chip carved hardwood shaft and a horn ferrule. H. 5" x 1 1/2", O.L. 35"
\$800-\$1,000

149. Art Deco Dress Cane

Ca. 1925-A cast sterling silver head of a greyhound with a silver overlay, two color glass eyes, signed sterling collar, thick malacca shaft and a horn ferrule. H. 4" x 2", O.L. 37"
\$700-\$900

150. Gold Dress Cane

Ca. 1890-A nice example of an Art Nouveau gold overlaid handle, hallmarked "A. H.," probably French, ebony shaft and a metal ferrule. H. 3 3/4" x 2 1/2", O.L. 35"
\$250-\$350

151. Carved Alligator Cane

Ca. 1930-A Jacksonville carved alligator, one piece orange wood, twigspur shaft and a metal ferrule. H. 5" x 1 1/2", O.L. 35"
\$300-\$400

152. Horn Sword Cane

Ca. 1880-An ergonomic horn handle with thumb rests, hallmarked British silver collar with dents, twist and lock sword mechanism with 20" blade, malacca shaft and a metal ferrule. H. 4 1/2" x 2 3/4", O.L. 36"
\$700-\$900

153. Asian Flick Stick

Ca. 1925-A Chinese defensive cane with a 4" locking blade atop, fine working condition, silver decorated dragon on tropical wood shaft and a metal ferrule. O.L 35"
\$800-\$1,000



154.

154. Ivory Sword Cane

Ca. 1810-An early ivory knob handle, various copper collars which have been silver plated, pair of original eyelets, 24" blade, malacca handle and shaft and a 3 1/2' brass ferrule.
H. 1 1/2" x 2", O.L. 35 1/4"
\$800-\$1,200

153.



156.

157.



155. Gold Quartz Dress Cane

Late 19th Century-A precise example of this sought after genre, heavy gold in quartz, ornate thick signed 14 kt handle, exotic wood shaft and a horn ferrule.
H. 1 1/4" x 2 1/4", O.L. 35"
\$4,000-\$5,000

158.

156. Early Sword Cane

Ca. 1860-An early bone handle with a carved snake and assorted bone inlays, push button locking mechanism with a 13" four sided ornate blade, ebony shaft and a horn ferrule.
H. 3 1/2" x 6", O.L. 35 1/2"
\$1,000-\$1,200

155.



157. Gold Dress Cane

Ca. 1900-A nice gold filled presentation with high relief work, ebony shaft and a metal ferrule.
H. 1 1/4" x 2", O.L. 35"
\$250-\$300

158. Erotic Ivory Cane

20th Century-A massive unique carving with a nude lady and the angel of death or maybe a vampire, ornate gold filled collar, rich and thick snakewood shaft and an ivory ferrule.
H. 6" x 1 3/4", O.L. 36"
\$3,500-\$4,500

159.



159. Art Nouveau Dress Cane

Ca. 1890-A celluloid cast handle, signed sterling collar, exotic wood shaft and a metal ferrule. H. 4" x 1 3/4", O.L. 36" \$250-\$300

160.



160. Faberge Style Dress Cane

20th Century-A spinach jade handle with a silver bulldog as an end cap, faux marked Russian hallmarks on a large gold enameled collar with four rubies, exotic wood shaft and a metal ferrule (non paying bidder previous sale). H. 5 1/2" x 2 1/4", O.L. 36" \$1,500-\$2,000



161.

161. Faberge Style Automation Bulldog Cane

20th Century-A solid silver handle with ruby and gold eyes, signed with faux Russian Faberge hallmarks, push button lower jaw, small gold collar, handle was made in around 1972 by a German master craftsman, thick snakewood shaft and a metal ferrule (non paying bidder previous sale). H. 3 1/4" x 2", O.L. 36 1/2" \$2,000-\$2,500



162.

162. Victorian Baby Rattle Cane

Ca. 1880-A Humpty Dumpty Victorian rattle which has been made into a dress cane, probably a memory stick of an earlier time in life, malacca shaft and a horn ferrule (non paying bidder previous sale). H. 3" x 1 1/2", O.L. 34" \$700-\$1,200



163. Floral Ivory Cane

Ca. 1890-A walrus ivory carving with beautiful detail, silver metal collar, rich exotic shaft and no ferrule.

H. 4" x 1 3/4", O.L. 35 1/2"

\$200-\$300

164. Figural Day Cane

Ca. 1900-Large flamed lemonwood handle carved to depict what seems to be a catfish with the prominent whiskers, well figured scales and inset glass eyes, ebony shaft with a plain silver collar and a horn ferrule.

H. 5" x 2 1/2", O.L. 37 1/4"

\$400-\$500

165. Mildly Erotic Siren Cane

Ca. 1870-Walrus ivory pistol grip handle with a dark horn siren applied to the stretching and knobbed vertical stem, dark rosewood shaft with a grooved silver collar and a stag horn ferrule.

H. 4 1/4" x 2 3/4", O.L. 36 3/4"

\$1,500-\$2,000

166. Ivory Cat Cane

Ca. 1890-Cat snoozing in a woven basket, ebony shaft with a silver ring collar and a horn ferrule. The lithe-bodied, feline flair is well rendered and its approach speaks for an English origin.

H. 2" x 1 3/4", O.L. 36 1/4"

\$1,500-\$2,000

167. Massive Ivory Snake Cane

20th Century-A large finely carved handle with two snakes both showing forked tongues, a thick malacca shaft which appears to be earlier than the handle and an ivory ferrule.

H. 2 1/4" x 4", O.L. 38"

\$2,000-\$2,500

165.



164.



163.



166.

167.





168.

169.



168. Erotic Cane

Ca. 1880-Substantial ivory handle "His" on the front and "Her" on the back, finely chased silver collar and a rosewood shaft with a stag horn ferrule. Well used cane with an age grown patina.
H. 4 1/4" x 1 1/4", O.L. 38"
\$1,000-\$1,500

169. Tropical Wood Figural Handle

Ca. 1920-Very large greenish tropical wood handle, the wild animal, possibly a tiger has inset glass eyes, ebony shaft with a brass ferrule and silver collar with Birmingham hallmarks.
H. 4 3/4" x 2 1/2", O.L. 37 1/2"
\$500-\$600



171.

170.

170. Oak Cane Case

Ca. 1900-An original finish in golden oak, stick and ball cane divider for 100 canes, stepped bottom and lift top.
24" x 27" x 53"
\$2,000-\$3,000

171. Walnut Fan Style Cane Stand

20th Century-An American walnut stand for 12 canes in fine condition.
35" x 27" x 5"
\$500-\$1,000

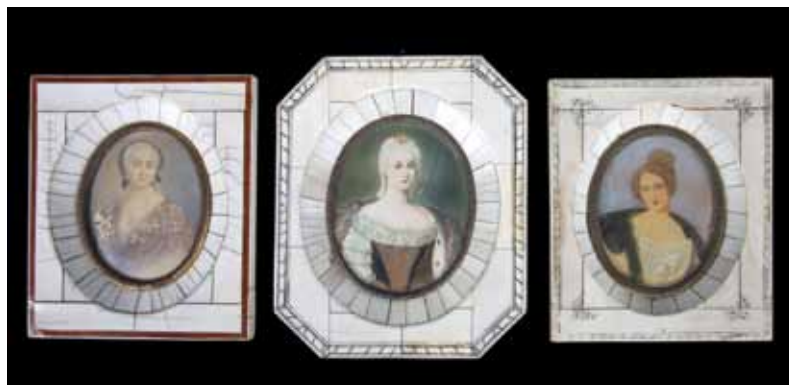
172. Golden Oak Cane Display Case

An original finish case with stepped bottom, with spaces for 49 canes, lift top on casters.
24" x 24" x 51"
\$1,800-\$2,500

172.



The following lots are all pre ban ivory and may be shipped to any buyer. Many lots in this collection were border line or after the ban and must be sold instate to in-house bidders. For those lots you must be here to bid and these lots will not be pictured in this catalogue.



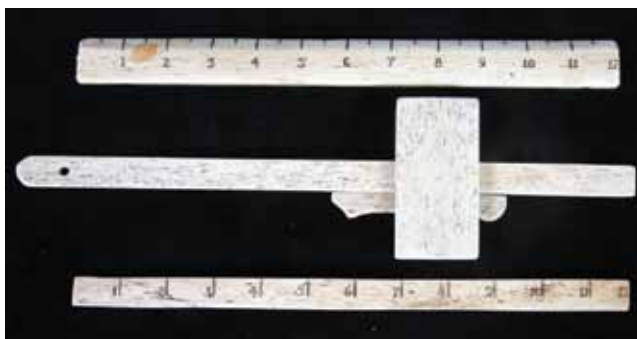
173.

173. Three Miniature Paintings on Ivory in Ivory Frames
\$400-\$700



174.

174. Cased Pair of Ivory A.J. Jordon Straight Razors
\$200-\$400



175.

175. Whale Bone Square and Rulers
\$300-\$600

176. Pearl Wade & Butcher Razor in original box
\$200-\$400



176.

177. Pair of Ivory Boot Pulls
\$100-\$150

178. Ivory Boot Dagger by E. M. Dickinson, 8"
\$200-\$300



177.



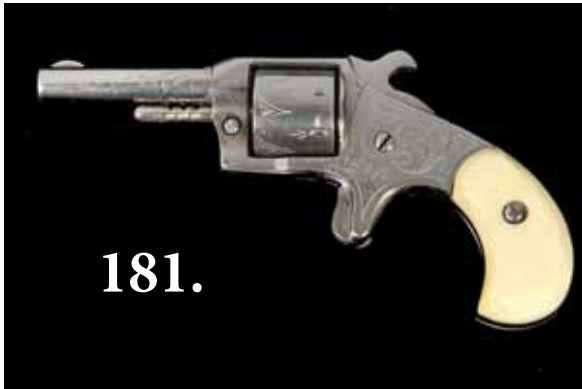
178.



179. Ivory Boot Dagger by W. M. Jackson with scabbard 8 1/2"
\$300-\$600

180. Ivory Seal with a Cross Hatch Pattern, 3"
\$50-\$100

181. Defiance Factory Engraved 22 Cal. 7 shot Revolver w/Ivory Grips by THE NORWICH FALLS PISTOL COMPANY.
\$200-\$300



182. Khanjarli Ivory Dagger
Probably late 18th Century
\$400-\$600

183. Nineteenth Century Ivory Pie Crimper, 8 1/2"
\$300-\$500

184. Northwest Coast/Eskimo Fishing Lure, 7"
\$150-\$300



**185. Northwest Coast/
Eskimo Fishing Lure, 7"**
\$150-\$300



**186. Northwest Coast/
Eskimo Fishing Lure, 7"**
\$150-\$300



**187. Nineteenth Century
Bone Dental Tool, 3 1/2"**
\$70-\$125



**188. Anheuser-Busch
Foam Scraper, 10"**
\$75-\$150



**189. Pair of Ivory Boot
Pulls**
\$75-\$150



**190. Scrimshaw Bone
and Baleen Gambler's
Spinner, 2 1/2" x 1 1/4"**
\$50-\$100



**191. Khanjarli Ivory
Handle Knife, probably
mid 19th Century, 12"**
\$300-\$500





192.

192. Pair of Ivory "SS" Boot Pulls, possibly German
\$100-\$200



193.

193. Ivory Pistol Grips with photos attached, 3" x 2" x 1"
\$200-\$300

194. WWI German Prisoner of War Knife, dated 1916, 6"
\$50-\$100

195. Three Bone Fids, 9"
\$150-\$300

196. Four Ivory Knives
\$100-\$200

197. Three Miniature Paintings on Ivory in Ivory Frames
\$400-\$600



194.



195.



196.



197.

**198. Pair of Ivory Birds on Stand,
5" x 1 1/2" x 1 1/2"
\$200-\$400**



**199. Bone and Brass Binoculars,
4 1/2" x 3 1/2"
\$50-\$100**



**200. Group of Silver, Horn, Bone,
Ivory Pocket Notes and Dance Cards
\$200-\$400**



**201. Group of Folding Rules in
Various Materials
\$200-\$300**



**202. Collection of Bone, Ivory,
Celluloid etc. Straight Razors
\$300-\$600**

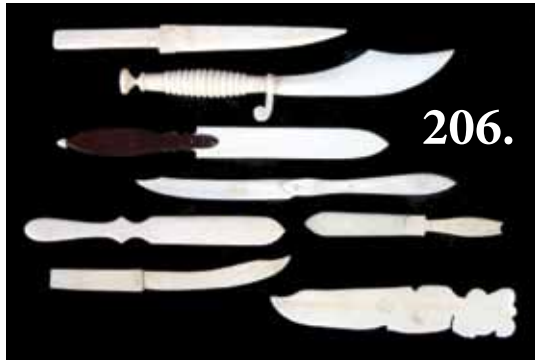


**203. Collection of Tobacco Pipes in
Ivory, Bone and other Materials
\$300-\$500**





205.



206.

204. Collection of Antique Pie Crimpers \$100-\$200

205. Collection of Ivory and Bone Knives \$100-\$200

206. Eight Ivory and Bone Letter Openers \$100-\$150



207.

207. Large Group of Glove Stretchers, Button Hooks etc. in both bone and ivory \$150-\$300



204.



208.

208. Ivory and Bone Gambler's Lot Including Poker Chips, Game Cup, Dominos, Dice, Baccarat Card Turner etc. \$400-\$600



209.



210.

209. Six Knives in Various Materials \$150-\$200

210. Assorted Bone and Ivory Lot \$100-\$200

211. Assorted Bone and Ivory Lot
\$100-\$200



212. Netsuke and Ivory an Asian Ivory Carving Lot
\$500-\$1,000



213. Three Advertising Match Safes
\$50-\$100

214. Utilitarian Whalebone Tool Lot
\$400-\$600

215. Assorted Ivory and Bone Lot
\$100-\$200

216. Ivory Bone Marrow Spoon etc. Lot
\$50-\$100

217. Ivory and Bone Toothbrush Lot
\$100-\$150





218.

218. Assorted Ivory and Bone Lot
\$200-\$400

219. Ivory and Bone Knitting and Sewing Lot
\$200-\$300

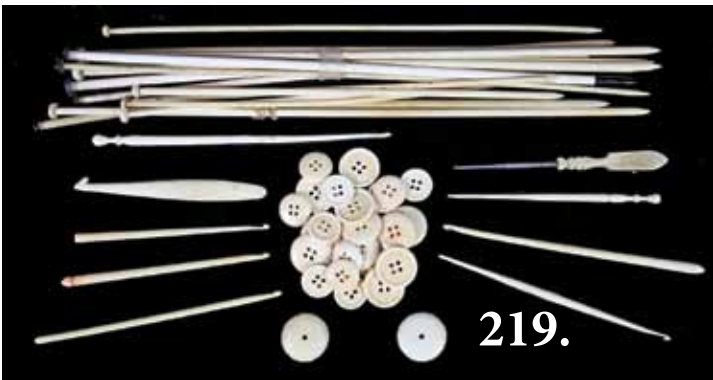
220. Bone Fish Set Group
\$50-\$150

221. E. Mead and Co.-St. Louis Ivory Knives
\$100-\$200

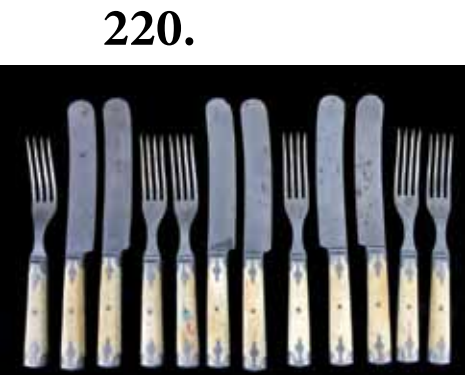
222. J. Rodgers & Son Bone Knives
\$100-\$150

223. Egyptian Bone Fly Bush with Horse Hair, 17"
\$100-\$200

224. J. R. Russell, Green River Ivory Carving Set
\$200-\$300



219.



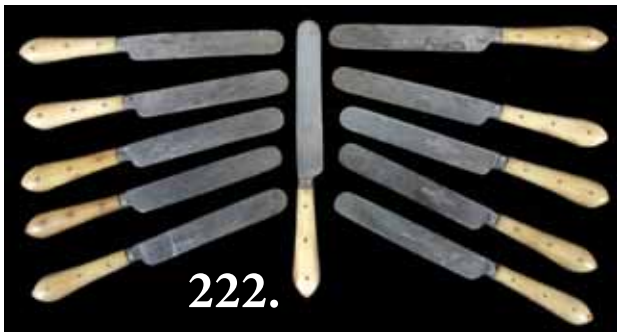
220.



221.



223.



222.



224.

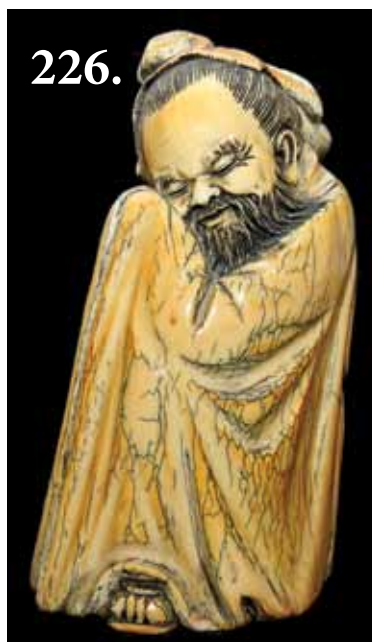
225. Assorted Group of Letter Openers, Scrapers and Knives
\$150-\$200

226. Carved Ivory Mortar,
Nice Patina, Carved Signature
Cartouche on Bottom, 4" x 6 1/2" x 3"
\$500-\$1,000

227. Erotic Kama Sutra Ivory Hand Painted Full Set of Playing Cards,
Each Card Has an Original Painted
Scene, Full Sized Cards
\$2,500-\$3,500

228. Eskimo Art
Ca. 1950, a native with a harpoon,
whalebone and ivory. 19" x 9"
\$800-\$1,200

229. Eskimo Art
Ca. 1950, bone and ivory fisherman,
walrus ivory face with baleen inlay.
18 1/2" x 4"
\$1,000-\$1,200





Kimball M. Sterling, Inc. (TFL-1915)
125 West Market Street
Johnson City, Tennessee 37601
kimballsterling @ earthlink.net
423.928.1471

Photography by James Price

Catalog Design by KT Design, LLC
www.kristaft.com

© Copyright 2013 Kimball M. Sterling, Inc.

www.AuctionAuction.com