



Kimball & Victoria Sterling present an

IMPORTANT
FALL
CANE AUCTION

SATURDAY, NOVEMBER 12TH, 2011
1:00 PM EASTERN

KIMBALL M. STERLING, INC.
TFL-1915

TERMS & CONDITIONS

1. Cash or check. A 15% buyers' premium will be added to the hammer price as part of the sale price for in-house, phone, and absentee bidders. We reserved the right to hold purchases until the buyers checks clears if buyer is not known by us. Bank letter of credit is acceptable. A 20% buyers fee will be charged to internet bidders.

2. Mail or phone bids are accepted; the firm may require a deposit.

3. Kimball M. Sterling, Inc. has endeavored to catalog and describe the property correctly. All property is sold as is and neither the auction company nor the consignor will be responsible for descriptions, genuineness, provenance or condition of the property. No statement in the catalog made orally at the sale or otherwise shall be deemed to be a warranty, representation, or an assumption of liability.

4. In the event of any dispute between bidders, the auctioneer shall have total discretion to determine the successful bidder, in which his determination shall be final or to re-offer and resale the article in dispute. Title of the item or items purchased by the bidder will pass at the fall of the gavel and declaration of bidder. This is not an approval auction. All measurements are approximate.

5. Principal auctioneer: Kimball M. Sterling #2467. B. Elizabeth Sterling, auctioneer # 5757. Firm Kimball M Sterling Inc. TFL-1915

6. Bidders may bid live on the Internet by visiting <http://www.auctionauction.com> You may also view the auction at this site and bid by phone.

7. Communications:
Telephone 423-928-1471.
Fax 423-928-2816.
Cellular 423-773-4073, 423-773-4072.
Email kimballsterling@earthlink.net

8. Kimball M Sterling has worldwide shipping available. Mr. Mark Winter handles all of our CITES permits for the buyer. After payment is received we will ship to him for your permitting.

9. Kimball M. Sterling, Inc. will not be held responsible for bids received on the day of the auction, unexecuted absentee bids, phone bidders not contacted or slow Internet bids. Although we do attempt to get all bids executed problems do occur. There will be no recourse from the bidder. We will not be responsible for items left on our location for over 30 days.

10. Sale will be conducted at 125 West Market Street, Johnson City, Tennessee. 37604. Announcements day of the sale take precedence over pre-sale advertising. Any litigation that pertains to this auction will be conducted in the county of Washington in Tennessee and is agreed upon by registering for this auction.

11. Airport is the Tri-Cities Airport, which is approximately 20 miles from the gallery. Internet catalog and live bidding available at www.auctionauction.com Best Western Hotel: 423-282-2126. A very fine hotel which offers Sterling Auction a discount rate is the Carnegie Hotel 1216 W State of Franklin Rd, (423) 979-6400.

12. Please call for condition report on sale lots or email us. We do send out multiple photos by email of any lot in the auction. By registering for this auction you accept the terms.

13. Parking service is free.

Kimball & Victoria Sterling present an

IMPORTANT FALL CANE AUCTION

SATURDAY, NOVEMBER 12TH, 2011

1:00 PM EASTERN

PREVIEW: FRIDAY, NOVEMBER 11TH

1:00-4:00 PM

AND THE MORNING OF THE
AUCTION AT 10:00 AM



WWW.AUCTIONAUCTION.COM

Kimball M. Sterling Auction Gallery
125 West Market Street
Johnson City, Tennessee 37601
kimballsterling @ earthlink.net
423.928.1471

Live on the internet at
LIVEAUCTIONEERS.COM
Two Time Winner of Best of Show
from the National Auctioneers Association

1. African Chief's Cane

Early 20th Century-A one piece ivory elephant's tusk with carved characters, oral legend says it was brought back from WWII from a ship's doctor, drilled eyelets, nice patina and no ferrule-O.L. 41"
\$1,000-\$1,200



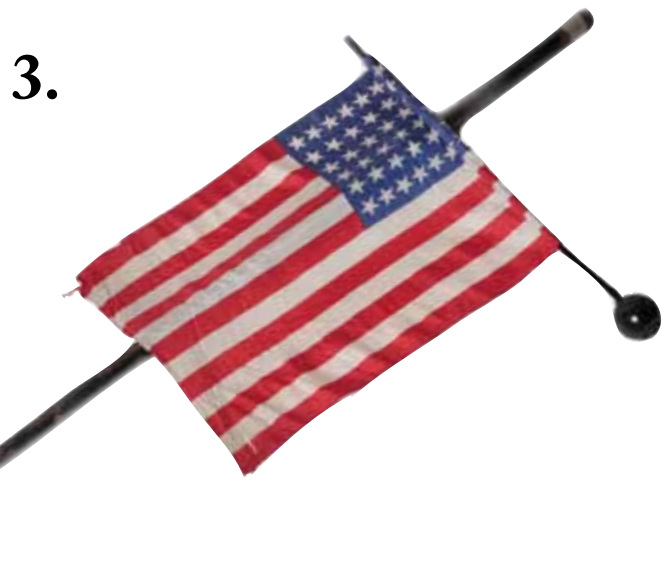
2. Gutta Percha Dress Cane

Late 19th Century-A pistol grip, full gutta percha handle and shaft with a metal ferrule-H. 2 1/2" x 3 1/2", O.L. 35 1/2"
\$300-\$500



3. American Flag Parade Cane

Early 20th Century-A 48 star American flag, wood knob handle, hardwood shaft and no ferrule-O.L. 36"
\$200-\$300



4. Remington Dog Head Style Dress Cane

Late 19th Century-A gutta percha head which looks much like the Remington gun canes, gold filled collar, ebonized shaft and a bi-metal ferrule-H. 3 1/2" x 2 1/2", O.L. 35 1/2"
\$500-\$600





8.

9.



10.



5.



6.



7.

5. Gutta Percha Naughty Leg Cane
Circa 1885-A beautifully molded handle, ivory disc spacers, full gutta shaft and a brass ferrule-H. 3" x 1 1/2", O.L. 35 1/2"
\$250-\$400

6. Ivory and Silver Dress Cane
Late 19th Century-A carved ivory handle with signed sterling end cap and ornate stone work collar by a New York maker, Malacca shaft and an old horn ferrule-H. 4" x 3", O.L. 35 1/4"
\$350-\$450

7. Gutta Percha Crook Handle
Circa 1890-A shepherd's one piece gutta percha cane with a bi-metal ferrule-O.L. 33 1/2"
\$200-\$300

8. Ivory Dog Dress Cane
Early 20th Century-Carved ivory dog with three color glass eyes and a red gem stone for a tongue, exotic hardwood shaft and a metal ferrule-H. 2" x 2", O.L. 36 1/4"
\$400-\$600

9. French Dieppe Carved Cane
Circa 1890-A nicely carved cherub style figure, square ebony shaft and a bi-metal ferrule-H. 3" x 3/4", O.L. 36"
\$400-\$600

10. Full Ivory Dress Cane
Circa 1930-A carved dress cane which is in three sections, small chip off of the swirl near the top, and no ferrule-H. 4 1/2" x 2", O.L. 33"
\$500-\$700

11. Bronze Leda and the Swan Cane

Early 20th Century-A finely cast handle of this erotic subject matter with good patina, mahogany shaft and a brass ferrule-H. 3 1/2" x 2 3/4", O.L. 37"

\$500-\$600



11.

12. Indian Sword and Defensive Cane

Circa 1935-A white bell bronze cast handle with red and green paint decoration, 20" steel blade, locking collar, mahogany shaft, mechanical brass ferrule which unscrews to produce a 1 1/2" four sided pike-H. 3 1/2" x 4", O.L. 36"

\$400-\$600



12.



13. Whimsical Ivory Pig Cane

Early 20th Century-Carved ivory pig with horn and ivory spacers, signed sterling collar, Malacca shaft and a horn ferrule-H. 2" x 1 3/4", O.L. 36"

\$500-\$700



13.

14. Whalebone Nautical Cane

Circa 1865-A carved ivory whales' tooth handle with monogrammed initials, 15/16 diameter whale bone shaft at the top, original patina and no ferrule-H. 3" x 1 1/2", O.L. 42 1/2"

\$2,000-\$2,500

14.



15.



15. Folk-Art Snake Cane

Early 20th Century-A carved diamond willow branch with two miniature snakes and no ferrule-O.L. 36"

\$100-\$200

16.



16. Ivory Crook Handle Cane

Circa 1880-A nicely carved ivory handle, bulbous silver collar, hardwood shaft and a 2" ivory ferrule-H. 4" x 3", O.L. 35 1/2"

\$300-\$500

17.



17. Ivory Dress Cane

Late 19th Century-A two piece carved handle, ornate brass collar, thick malacca shaft and a brass ferrule-H. 3 1/2" x 5", O.L. 34 1/2"

\$400-\$600

18. Bull Penis Cane

Late 19th Century-As far bull penises go, this is a nice one. It has a great patina, nice heavy weight and a very early 2" bi-metal ferrule-O.L. 35"

\$300-\$500

18.



19. Exotic Carved Ebony Head Cane

Early 20th Century-A nicely carved Nubian ebony and ivory spacer, zebrawood shaft and an ivory ferrule-H. 3 1/2" x 2 1/4", O.L. 35"

\$300-\$500

20. Malachite Dress Cane

Early 20th Century-An 1 1/3" spear handle with vibrant colors, signed sterling collar, ebony shaft and never had a ferrule-O.L. 36"

\$400-\$600

20.



19.



21. A Gardener's Truffle Cane

Circa 1880-A nice example with a 7" x 2" spade as the ferrule, hickory crook handle shaft and nice patina-O.L.36"
\$250-\$400

22. Ivory Reptile Cane

Circa 1900-Carved ivory handle with a strange reptile atop, good patina, white metal collar, maple shaft and a bi-metal ferrule-H. 4 1/2" x 1 3/8", O.L. 36"
\$500-\$1,000

23. Saw Fish Folk-Art Cane

Late 19th Century-An unusual combination of fish and horn, some teeth damaged or missing as seen in the photo, great patina and no ferrule-H. 6" x 1 3/4", O.L. 33"
\$400-\$500

24. Erotic Stanhope Cane

Late 19th Century-A carved dog head with two color glass eyes, Tepliz style silver attached, Stanhope with two nude women playing on swings, massive stepped hardwood shaft and a metal ferrule-H. 6" x 4 1/2", O.L. 32 1/2"
\$800-\$1,200



22.



21.



23.



24.

25.



25. Ivory Full Nude Dress Cane

Ca. 1890-A Museum quality sensual carved ivory kneeling Venus drying her hair with a great view to the butt. This cane is most likely French, massive silver collar, a full bark malacca shaft and brass ferrule.-H. 3" x 2 1/2", O.L. 38 1/2" \$5,000-\$8,000



26. Art Nouveau Alphone Mucha Dress Cane

Ca. 1900- Mushroom shaped silver handle with a female head in the Byzantine style with applied framing floral ornaments, palmwood shaft and a brass ferrule. Austrian hallmarks- H. 3 1/2" x 1 1/2", O.L. 36 1/2" \$1,200-\$1,800

26.



27. French Ivory Dress Cane

Early 19th Century-Baroque ivory handle with the bust of a beauty, fruitwood shaft with a silver collar and a bone ferrule. Well used surface with some wear in keeping with the cane age.-H. 4" x 1 1/2", O.L. 31 1/2" **\$1,200-\$1,800**



27.

28. Hard Stone Dress Cane

Late 19th Century-A polished ball with a crystallized structure and of variegated red and black colors probably being corundum (ruby), gilt collar, ebony shaft and a horn ferrule.-H. 1 3/4" x 1 3/4", O.L. 39" **\$500-\$800**



28.

29. Amusing French Monkey-Jockey Cane

19th Century-A pristine ivory knob carved to depict a monkey's head with stretched, pinned ears and rosewood riding cap. Full bark malacca shaft, ivory ring collar and horn ferrule.-H. 2 3/4" x 2", O.L. 39 1/4" **\$1,600-\$2,000**



29.



30.

30. Ivory Crab Claw Cane

19th Century-A finely carved claw with all of its joints, silver collar with Austro-Hungarian silver marks and "Dr. HK" initials, gnarled Kongo wood shaft and a metal ferrule.-H. 3 3/4" x 3 1/4", O.L. 36 1/4"
\$1,800-\$2,500

31. Meissen Porcelain Cane

19th Century-Finest quality derby shaped white porcelain with beautiful flower sprays, ebony shaft, grooved silver collar and horn ferrule.-H. 3" x 1 1/2", O.L. 37 1/2"
\$1,000-\$1,500

32. Rose Quartz Dress Cane

Early 20th Century- Rose quartz handle of unusual intense color with a gilt collar and ebony shaft with a horn ferrule.-H. 2 1/2" x 1 1/4", O.L. 38 3/4"
\$600-\$900



31.

32.



34.

34. Prince Figural Porcelain Cane

19th Century-Substantial mint porcelain knob modeled and finely painted to depict the bust of a Prince in court attire. Full bark malacca shaft with an elaborate silver filigree collar and a staghorn ferrule. One-of-a-kind commemorative item and most likely Meissen -H. 4 x 2 ½", O.L. 41 ½"
\$3,000-\$4,000



33.

33. German Ivory Owl Cane

19th Century-An L-shaped carved ivory handle of an owl perched on a branch, malacca shaft with a white metal collar and a brass ferrule.-H. 5 x 3 ½", O.L.34 ¼"
\$1,500-\$2,000



36.



35. Princess Figural Porcelain Cane

19th Century-Substantial porcelain knob modeled and finely painted to depict the bust of a Princess in court attire. Full bark malacca shaft with an elaborate silver filigree collar and a staghorn ferrule. One-of-a-kind commemorative item and most likely Meissen .-H. 4 ¼" x 2 ¼", O.L. 42 ¼"
\$3,000-\$4,000

36. Figural Hard Stone Cat Dress Cane

Ca. 1900 -Substantial grayish-green jasper seated cat on a rose quartz base with plain silver collar, ebony shaft and a horn ferrule. The cat is well rendered in a natural posture with fine fur coat and a flat laying tail curving along its bottom. Its lively, affectionate feline expression on the face is emphasized with ruby inlay in the eyes and a silver collar belt with hanging heart. This one-of-a-kind cane is in the Fabergé Russian Style and belongs to the upscale jewelry Objects of Virtue-H. 4 ½" x 1 ¾", O.L. 37"
\$5,000-\$7,000



35.



37. Leda and the Swan Hippo Ivory Cane

Ca. 1890-A breathtaking erotic subject matter masterly carved in hippo ivory showing a female nude in full glory with the large aquatic bird. Shaved bamboo shaft with a horn ferrule. -H. 4" x 2 1/2", O.L. 36 1/4" \$3,000-\$4,000

37.



38.

38. Carved Ivory Erotic Cane

Ca. 1890-Very unique carved ivory handle with delicate fine detail, Art Nouveau silver collar and ebony shaft with a 3 1/4" long ivory ferrule. -H. 2" x 2", O.L. 33 3/4" \$2,000-\$3,000



39.

39. Guilloche Enamel Viennese Dress Cane

Ca. 1890-The guilloche has hand painted bouquets of roses in a gold filigree that surrounds the handle, some damage to the enamel, rosewood shaft and a horn ferrule. The work of a master artisan's hand with several hallmarks beside an "800" and a "G.A.S." for the legendary Georg Adam Scheid-H. 4" x 1", O.L. 37 3/4"

\$1,200-\$1,600

40. Northwest Coast Native Cane

Early 20th Century-A fine example of the native's work with inlaid abalone. The handle is carved in a high relief with wild animals and masks, malacca shaft with a plain silver collar and a metal ferrule-H. 3 1/2" x 1 1/2", O.L. 35 1/4"

\$1,500-\$2,000

41. Punch and Judy Ivory Cane

19th Century-Straight ivory handle with the full length portraits of Judy and Punch against one another, heavy iron wood shaft and an ivory ferrule. One-of-a-kind substantial and humorous cane in untouched condition-H. 4 3/4" x 2", O.L. 35 3/4"

\$1,800-\$2,500

41.



40.



42. Victorian Dress Cane

19th Century-Sardonyx knob, naturally layered and with an "All Seeing Eye" on the top, smooth partridge shaft and a white metal collar and matching ferrule.-H. 1 1/2" x 1 1/2", O.L. 34"

\$400-\$700

43. Viennese Tiger Eye Dress Cane

Early 20th Century-A Milord shaped knob of a layered structure and mottled brown colors with golden hues on a deep black ebony shaft, metal collar and a horn ferrule.-H. 3" x 1", O.L. 38 3/4"

\$500-\$700

44. German Folk Art Cane

19th Century-A good character carving portrait of a man with a smiling face and exaggerated long nose, full bark malacca shaft with a coiled snake metal collar and a staghorn ferrule. Viennese with an anti-Semitic background-H. 5" x 4", O.L. 39"

\$800-\$1,200

45. Ivory Dogs Cane

Late 19th Century-A large crook ivory handle carved with four dog heads, braided silver wire collar, malacca shaft and an iron ferrule. Expertly secured cracks to the handle with a great surface.-H. 4 3/4" x 3 3/4", O.L. 35 1/2"

\$1,200-\$1,800

43.



44.

45.



42.



47.



46. Dual Purpose French Optical Cane

Early 1800's-T-shaped ivory handle carved with putti within Baroque scrolls, rosewood shaft and an ivory ferrule. The handle is hollowed to hold two now missing lenses. Similar cane illustrated in C. Dike, Cane Curiosa page 97-H. 4 ¼" x 2 ½", O.L. 35"
\$1,000-\$1,500

47. Dual Purpose Marine Cane

Ca. 1840-1850-Substantial one piece whale tooth knob well carved as a fist with a coiled snake and buttoned cuff on an octagonal baleen collar and ebony shaft with a baleen ferrule. The handle and ferrule unscrews and the shaft, which retained an intense tobacco smell, can be used for smoking. Imbued with the sensitivity and skill of the whaler artist and his innate aesthetics, this cane is Marine Art at its best. -H. 5 ¾" x 2 ¼", O.L. 36 ¼"
\$4,000-\$6,000

46.



48. An Early Dual Purpose Cane
 1st half of the 19th Century. Silver
 container handle with a deep
 cavity under a hinged flipping lid
 engraved with the initials "E.H.H."
 with a Makassar ebony shaft and
 a matching silver ferrule.-H. 3" x 2
 ¼". O.L. 37 ¾"
\$1,200-\$1,800

48.



49. Early German Dual Purpose Aristocrats Cane
 Ca. 1800-Sunstantial straight knob
 in classic Baroque early shape hand
 chased with scrolls on the side and
 a pan with flute on a hinged top
 covering a cavity. Full bark malacca
 shaft and a horn ferrule. -H. 3" x 1
 ¾", O.L. 37"
\$1,200-\$1,800

50. Horse Measure Cane
 Ca. 1901-Staghorn handle
 ,malacca shaft, silver collar and a
 metal ferrule.-H. 5" x 2 ¼",
 O.L. 37"
\$500-\$800

49.



50.





51.

51. Ivory Whale Cane

19th Century-A substantial whale tooth ivory handle carved to depict a sperm whale, ebony shaft, horn ferrule and a chased silver collar engraved "J.R. KERSHAW COMPSTAU"-H. 4 ½" x 1 ¼", O.L. 38 ¼"
\$1,000-\$1,500



52.

52. Rare English Crocodile Cane

Mid 19th Century-This cane features a baby crocodile head as the handle on a stem, which is said to be by the collector who owned it for three decades, an adult crocodile penis bone. The handle comes on a sizeable tropical wood shaft with carved knobs and fitted with a spiked, steel ferrule.-H. 6 ½" x 6", O.L. 35 ¼"
\$1,500-\$2,000

53. Hard Stone Dress Cane

Ca. 1910-Straight and tapering opaque, blue-to-green hard stone handle which seems to be turquoise, rosewood shaft with a gilt collar and a horn ferrule-H. 3 ½" x ¾", O.L. 38 ½"
\$400-\$700

53.



54. Nautical Folk Cane

Mid 19th Century-A carved hardwood shaft topped by a clinched fist, said to have been fashioned of a ship-wheel spoke from a stranded whaler. -H. 5" x 3 1/4", O.L. 36"
\$500-\$800



54.

55. Shibayama Ivory Dress Cane

Late 19th Century-This Japanese cane has a pair of insects which are micro carved and inset with mother-of-pearl, white metal collar, stained snakewood shaft and a 3" tall ivory ferrule. -H. 3 3/4" x 1 1/4", O.L. 33 1/4"
\$1,000-\$1,500

56. Asian Ivory Dress Cane

Ca. 1880-A finely and intricate carved ivory handle with a fruits and flowers and a dragon in the clouds, multiple ornate collars, exotic wood shaft and an ivory ferrule. -H. 6 3/4" x 2 3/4", O.L. 39 1/2"
\$800-\$1,200

57. Massive Ebony Zodiac Cane

Early 20th Century.-A Far-East carved ebony ball with various animals, inset glass eyes, metal collar, hardwood shaft and a brass ferrule. -H. 2" x 2", O.L. 37 1/2"
\$700-\$1,000



56.



55.



57.





60.

58. Asian Bone Container Cane

Late 19th Century-A substantial cylindrical handle , top which has a carved lotus cover unscrews to reveal the deep container with varied ivory needles. Wild cherry branch shaft and a metal ferrule.-H. 5 ¾" x 1", O.L. 38"
\$500-\$800

59. Chinese Cloisonné Cane

Ca. 1880-A nice example of this work in a rounded ball shape with integral stem and vivid colors on a dark background. Ebony shaft with a tiny brass ferrule. -H. 2" x 1 3/4", O.L. 36 1/2"
\$500-\$700

60. Smuggler Cane

Around 1900-White metal Art Nouveau handle with a colored stone on the front nose and a metal shaft painted to simulate a stepped, dark malacca. The handle reveals a deep container cavity concealed in the shaft. This cane is said to have been used by a Jesuit to smuggle diamonds out of Africa and used his profits to finance an orphanage. -H. 5 ¼" x 3 ½", O.L. 36"
\$600-\$900

61. Mascot Dress Cane

Early 20th Century-Jade ball knob in a white metal, possibly silver cage made with three dragons and topped by the Imperial guardian lion Shishi, rosewood shaft with a horn ferrule.-H. 3" x 1 ¾", O.L. 37 ½"
\$400-\$700



59.

58.



61.



62. Parade Cane

Ca. 1900- Rosewood with a crook handle and octagonal, fluting shaft with four integral twist parts, embellished with mother-of-pearl and linear boxwood inlay and with a metal ferrule. -H. 5 1/2" x 4 1/2", O.L. 37 1/2" \$400-\$600

63. Nymphenburg Porcelain Dress Cane

Late 19th Century-The famous Bustelli seated white lion with the pale blue painted Bavarian coat of arms, full bark malacca shaft with a chased silver collar and a horn ferrule. Luxury edition with a mouth in openwork and signed with two under glaze embossed signature-marks of the reputed Munich manufacture-H. 3 1/4" x 1 3/4", O.L. 38" \$900-\$1,500

64. Black Man Cane

19th Century-A great character carving of a Black Man with bound curly hair and two color glass eyes. The head comes on a 6" cork oak stem and peeled Kongo wood shaft with a metal ferrule. - H. 3 1/2" x 2 3/4", O.L. 35 1/4" \$1,000-\$1,500

65. Art Nouveau Porcelain Cane

Late 19th Century-Pistol grip shaped porcelain handle painted with flowering twigs on a lavender background. Rosewood shaft with a gilt collar and a horn ferrule-H. 2 1/2" x 1 1/4", O.L. 38 1/2" \$400-\$600

64.



63.

65.

62.



66.



66. Art Nouveau Feminine Dress Cane

C. 1890- A small L-shaped handle chased different flowers on each side, ebony shaft with a metal ferrule. German half-moon and 800 hallmarks and a "GESCH." stamp (Patent).-H. 2 1/2" x 1 3/4", O.L. 32"

\$400-\$600

67.



67. Sèvres Porcelain Dress Cane

Ca. 1900-Cobalt blue porcelain ball knob hand painted with a cherub and sunflowers, Art Nouveau white metal collar and a fruitwood shaft with a brass ferrule-H. 1 1/2" x 1 1/2", O.L. 37"

\$400-\$600

68.



68. Feminine Dress Cane

Early 1900s-A Derby shaped silver handle with a long-stretching stem, hand chased and engraved with Baroque scrolls and blooms. The handle is struck with Viennese hallmarks and comes on a slender ebony shaft with a metal ferrule.-H. 7 1/2" x 2", O.L. 35 1/2"

\$600-\$900

69. Ivory Balkan Cane

19th Century-T-shaped carved ivory with a warrior head, full bark malacca shaft with metal ring collar and an ivory ferrule. -H. 5 1/4" x 1 1/2", O.L. 36"

\$900-\$1,200

69.



70. French Lapis Lazuli

Dress Cane

Early 20th Century-Lapis lazuli ball of a vivid blue color with natural gold dust, Art Nouveau metal collar, mahogany shaft and a brass ferrule-H. 1 ½" x 1 ½", O.L. 37 1/2"
\$500-\$800



71.

71. Carved Viennese Parrot Cane

Ca. 1900-A large fruitwood carved and stained head with ivory beak and glass eyes, metal wire woven collar, rosewood shaft and a long horn ferrule, near mint condition-H. 5 ½" x 3 ¼", O.L. 33 ¾"
\$800-\$1,000



70.

72. Countryside Dog Cane

Late 19th Century-Fashioned of a live oak branch freed from its bark with an integral crook handle and steel ferrule. The handle ends with a well carved pointer head with glass eyes, ivory ears and ivory and ebony washer collar-H. 6", the dog head 2 ½" x 1 ¾", O.L. 34"
\$600-\$900



73. Silver Eagle Dress Cane

Ca. 1920-A well molded crook silver handle with an eagle head, ebony shaft and a brass ferrule. Silver hallmarks, makers marks and engraved initials. -H. 4 ¾" x 4 ½", O.L. 37"
\$500-\$800



73.

72.



76.

74. Rabbit Cane

19th Century-Long eared ivory rabbit head with large eyes, wide engine turned silver collar finely engraved "G. Noon Hinckley", full bark malacca shaft and a metal ferrule. -H. 4 1/4" x 1 1/4", O.L. 33 1/2" \$1,300-\$1,800

75. Brigg Ivory Dog Cane

Ca. 1880-A wonderful carved French Bulldog with muzzle, cut ears and beaded glass eyes, wide silver collar stamped "BRIGG & SONS LONDON", hardwood shaft and a horn ferrule-H. 2" x 1 1/4", O.L. 38" \$700-\$1,000

76. Decorative Day Cane

Late 19th Century-Bone and horn handle topped by a prone wooden rabbit, flamed rosewood shaft with metal collar and a bone ferrule.-H. 4 3/4" x 1 3/4", O.L. 35 1/4" \$800-\$1,200

77.



77. Agate Dress Cane

Early 20th Century-The polished Milord handle of a natural gray color and subtle foggy structure, ebony shaft with a plain silver collar and a horn ferrule- H. 2 1/2" x 1", O.L. 37 1/2" \$500-\$700



74.

78. French Bird Cane

Late 19th Century-A beautiful horn handle carved as cockatiel head with crest and glass eyes, gilt metal collar and slender ebony shaft with a metal ferrule-H. 1 1/2" x 1 1/4", O.L. 36 7" \$300-\$500

75.



78.



79. Ivory Elizabeth I Cane

Circa 1880-A large finely carved ivory handle with two color eyes which has been carved both front and back, lanyard hole, 1" ebony shaft and a bi-metal ferruled-H. 3 1/4" x 1 3/4", O.L. 37 1/2"

\$1,700-\$2,000

80. Ivory Dog Sword Cane

Circa 1865-An American ivory carved handle which is inked Boston, 15" blued and gilded blade with locking mechanism, malacca shaft and a horn ferrule-H. 3 1/2" x 4 1/2", O.L. 35"

\$1,000-\$1,200

81. Golfers Cane

Early 20th Century-A silver-plate handle, wire wrapped flexible shaft and a metal ferrule-H. 2 1/4" x 2", O.L. 34 1/4"

\$100-\$200

82. Arts and Crafts Day Cane

A fun cane with a translucent gold speckled disc atop, ivory and horn spacers, stacked leather disc and a brass ferrule-H. 1 3/4" x 1 1/4", O.L. 32 1/2"

\$400-\$450

83. Gutta Percha Dress Cane

Circa 1880-An unusual dragon type of animal perched on a limb, beaded silver collar, mahogany shaft and n ivory ferrule-H. 4 1/4" x 5 1/4", O.L. 36 1/2"

\$700-\$900



81.



82.



83.



79.



80.





84. Asian Ivory Dress Cane
 Circa 1890-A carved ape with two color glass eyes which is reaching from the talons to grab a lizard with two color glass eyes, white metal collar, ebonized shaft and a metal ferrule-H. 5 1/2" x 2", O.L. 37"
\$1,000-\$1,300

85. Staghorn Asian Cane
 Circa 1890-A large carved ape which is attempting to catch a small crab, silver ribbon collar, cherry tree bark shaft and no ferrule-H. 6 1/2" x 1 1/2", O.L. 40"
\$500-\$700

86. Carved Ivory Peasant Cane
 Circa 1890-A nicely carved young gentleman, rich malacca shaft with the initials A.G. in gold attached and a horn ferrule-H. 5" x 1 3/4", O.L. 36"
\$1,000-\$1,500

84.



86.



85.

87. Ivory System Stick
 Circa 1890-A unique carved ivory gargoyle with two color glass eyes whose mouth doubles as a cigarette holder, ornate brass collar, ebony shaft and a horn ferrule-H. 4 1/2" x 1 3/4", O.L. 35 1/2"
\$1,500-\$2,000

87.



88. Ivory Phrenology Cane

19th Century-This is an authentic cane of this type from a very early private collection, detailing and descriptions can be seen throughout the head and the collar. It is in nice condition, gold collar, rosewood shaft and a metal ferrule-H. 3" x 1 1/2", O.L. 36"
\$2,500-\$3,500

88.

89. Ivory and Gauntlet Telescope Cane

Circa 1880-A very unique example with a working one draw telescope with ivory and brass mounts, damascene style decoration on a cast bell bronze gauntlet, ebonized shaft and a metal ferrule-H. 4" x 3 1/2", O.L. 35"
\$1,400-\$1,800

90. Folk-Art Cow Cane

Early 20th Century-An American carved and painted Guernsey cow, hardwood shaft and no ferrule-H. 5 1/4" x 3 3/4", O.L. 34 1/2"
\$500-\$600



90.



89.

92.



91. Ivory Snake-A-Gator Cane
Dated 1869-A carved twin creature with nice patina monogrammed and dated silver band, maple shaft and no ferrule-H. 3" x 1 1/4", O.L. 36"
\$700-\$900

92. Ivory Lovers Cane
Circa 1840-A fully carved handle done in the utmost of quality, gold filled ornate collar, ebony shaft and a metal ferrule-H. 5 1/2" x 1 1/2", O.L. 39"
\$1,800-\$2,200

93.



93. Folk-Art Carved Cane
Circa 1900-A one piece carved cane with various oak leaves and acorns, stylized natural grown burl handle and no ferrule-O.L. 37 1/2"
\$200-\$300

91.



94. Folk-Art Dog Cane
Late 19th Century-A carved one piece cherry branch with two color glass eyes and a brass ferrule-H. 3" x 2", O.L. 33 1/2"
\$500-\$600

95. Ivory Skeleton Sword Cane
Late 19th Century-One piece carved ivory handle which has an over spray, 17" two sided blade, thick bamboo shaft and a metal ferrule-H. 4 1/4" x 1 1/2", O.L. 33 1/4"
\$1,000-\$1,400

95.



94.



96. Delicate Ivory Sword Cane

Circa 1875-A nicely carved ivory handle with roses and shield, probably once being a defensive weapon for a lady of the night, ornate gold filled collar and 10" fancy etched and hand filed blade with locking mechanism, malacca shaft and a small metal ferrule-H. 2 3/4" x 5 1/2", O.L. 33 1/2"

\$1,000-\$1,200

97. Early Ivory Sword Cane

Circa 1760-An ivory knob with an abalone disc atop, lanyard holes, gold-filled and metal collars, a signed 12" blade which has gold and bluing, malacca shaft, 4" brass and iron original ferrule-H. 1 3/4" x 1 3/4", O.L. 34"

\$1,500-\$1,800

98. Important Ivory Sword Cane

Circa 1680-An ivory knob with an engraved gold disc atop, gold eyelets, gold collar, with a 12" mint 3 sided blade signed "Charles Klauberg Newyork" malacca shaft, no collar between handle and shaft and 4" brass ferrule-H. 1 1/4" x 1 3/4",

O.L. 35 1/2"

\$1,500-\$1,800

97.



98.



96.



99.



99. Ivory Demon Sword Cane

Late 19th Century-A carved ivory handle with glass eyes, an 18" blade with blood grooves bamboo shaft, metal collars and a replaced ivory and brass ferrule-H. 4 1/2" x 2", O.L. 35 1/2"

\$1,500-\$1,800

100. A Pair of Ivory Dress Canes

Circa 1885-A nice combination, one with a nice ornate gold-filled collar, one with malacca shaft and the other walnut, two original brass ferrules, largest handle is 3 1/2" x 1 1/2"-O.L. 34"

\$600-\$700



100.

101. Silver Dog Dress Cane

Early 20th Century-A cast silver dog mounted atop a silver collar, maple shaft and an unusual, transparent ferrule-H. 1 3/4" x 1 1/4", O.L. 32 1/2"

\$500-\$600

102. Nude Ivory Sword Cane

Late 19th Century-A carved ivory nude upon a branch, three ornate gothic style silver collars with unreadable hallmarks, a 16 1/2" steel blade, bamboo shaft and a metal beaded disc ferrule-H. 2 1/2" x 5"-O.L. 35"

\$2,000-\$2,500

102.



101.



103. Rabbi Dress Cane

Early 20th Century-A carved wood Rabbi handle, silver collar, malacca shaft and a horn ferrule-H. 3" x 1 3/4", O.L. 35"
\$300-\$500



104.

104. Ivory and Silver Dress

Circa 1890-A nicely carved and stylized handle with silver end cap and signed sterling collar, maple shaft and no ferrule-H. 4 1/2" x 2", O.L. 35"
\$400-\$500



105.

105. Bone and Ivory Suitcase Cane

Circa 1925-A carved bone frog atop an ivory cylinder, three piece mahogany shaft and a metal ferrule-H. 4" x 1 3/4", O.L. 37 1/2"
\$500-\$1,000



103.

106. Wild West Cowboy Bronze Cane

Circa 1885-A very finely cast bronze handle with a hand holding a percussion dueling pistol, fine ebony shaft and a brass and metal ferrule-H. 3" x 2", O.L. 36"
\$800-\$1,000

107. Thermometer Gadget Cane

Circa 1930-An Art Deco Bakelite style handle which has a Berkson product atop, metal collar, maple shaft and a bone ferrule-H. 1 3/4" x 1 1/2", O.L. 32 1/2"
\$500-\$600



106.

107.



110.



108. Sailing Dress Cane

Circa 1930-Carved wood handle which has an inlaid glass disc of a sailboat atop, brass collar, twig spur shaft and a brass ferrule-H. 1 3/4" x 1 3/4", O.L. 34"

\$300-\$400

109.



109. Pewter Shoe Cane

Circa 1900-A nicely cast sock and shoe which is signed on the bottom "Tis a Feat to Fit Feet 1204 and 6 Market St.", twig spur shaft and a bi-metal ferrule-H. 4" x 3 1/2", O.L. 35"

\$500-\$600

108.



110. Flashlight System Stick

Early 20th Century-An L shaped handle which would hold two batteries, an end cap which unscrews with a bulb, push button off and on switch under battery container, metal collar, hardwood shaft and a bone ferrule-H. 4 1/2" x 2 1/4", O.L. 34 1/2"

\$350-\$450



111. Ivory Sword Cane

Circa 1880-Carved ivory pirates head with two color glass eyes, brass collar, a 15" blued and gold etched blade, brass collar, bamboo shaft and a brass ferrule-H. 1 1/4" x 1 1/2", O.L. 37"

\$700-\$900

111.



112. Museum Quality Dancing Stallions Ivory Dress Cane

Circa 1885-A master carving in ivory of two stallions with beaded glass eyes, unique carving and detailed work to this piece of art, ornate large gold-filled collar, rich ebony shaft and a brass ferrule-H. 4 3/4" x 1 1/2", O.L. 36 1/2"
\$3,000-\$3,500



113.

113. Eskimo Folk Cane
Early 20th Century-A scrimshawed oosik with Eskimos riding in a boat and various other Native items, whalebone and baleen spacers and tip, snakewood shaft and a bimetal ferrule-H. 9" x 1 1/4", O.L. 36"
\$400-\$500



114.

114. Dog Glove Holder Cane
Circa 1930-A carved dog head with two color glass eyes, push button throat, professionally refreshed cane, walnut shaft and a metal ferrule-H. 3" x 2", O.L. 36"
\$300-\$400

112.





115.

115. Russian Classical Ivory Cane

Circa 1880-A beautifully carved ivory handle with a lady holding a bundle of flowers with a banner that states "Divrraspaalmaree"?, ivory ribbed collar, ebony shaft and an ivory ferrule-H. 3 ¾" x 1 ½", O.L. 36"

\$800-\$1,200

116. French Crystal Bulldog Dress Cane

Circa 1900-A "Frenchie" bulldog crystal cane handle with gold and deep blue sapphire inset eyes, royal cobalt enamel and 18kt. gold collar, heavy ebony shaft and a bi-metal ferrule-H. 2 ½" x 2", O.L. 36 ½"

\$2,500-\$3,500



116.



117. Ivory Bacchus Dress Cane

Circa 1885-An expertly fully carved ivory handle done in great detail, banded silver collar, ebony shaft and a metal ferrule-H. 4" x 2 1/2", O.L. 36 1/2"
\$1,500-\$2,500



117.

118. Bear Dog Ivory Cane

20th Century-A massive carved ivory handle with a standing bear and four bear hounds attacking and playing w, signed sterling fluted collar, massive malacca shaft and a horn ferrule-H. 4" x 1 3/4", O.L. 37"
\$1,500-\$2,500

119. Victorian Porcelain Dress Cane

Late 19th Century-A large hand painted porcelain portrait cane with heavy decoration, ornate gold-filled handle and collar, rich snakewood shaft and a horn ferrule-H. 8" x 1 3/4", O.L. 36"
\$700-\$1,000



119.

118.



120.



120. Remington Gun Cane

Circa 1880-A large example of Remington .32 caliber rifle gun cane in mint condition, pristine working condition and the best example that we have ever sold. This cane is featured on page 115 of "The Pearson Cane Collection" by Yousef Kadri. If you are looking for the best this could be it.-H. 7 ¼" x 3 ½", O.L. 36 ½"
\$7,000-\$9,000

Robert Pearson Collection





121.

121. French Joubert Signed Pepperbox-Stiletto Gun Cane

Patented 1892-The finest example known which is featured on page 114 of "The Pearson Cane Collection" by Yousef Kadri. This fine Paris Brevette rimfire six shot revolver has a double action trigger and is in fine working condition, the stiletto is 5" and can be unattached to make the pistol a garter pistol, firm stag handle, folding trigger, tropical wood shaft and a metal ferrule-H. 3 1/2" x 2 1/2", O.L. 35" (some rare original ammo accompanies this gun)

\$7,000-\$9,000

Robert Pearson Collection



122. English Ivory Bird Cane

Circa 1890-A fancy carved ivory handle with a family of birds, Mom, Dad and Baby, two color glass eyes, pictured on page 166 of "The Pearson Collection" by Yousef Kadri, massive rosewood shaft and a metal ferrule-H. 3 1/2" x 2", O.L. 37"

\$1,800-\$2,000

Robert Pearson Collection



122.



123.

123. Shibayama Ivory Dress Cane
 Circa 1890—A master's carver's example of this genre with over twelve insects including centipedes, beetles, spiders, etc in various stones and shells. The craftsmanship is museum quality in each insect, ribbed sterling collar, pair of silver eyelets, ebony shaft, signed in red with four Asian characters and a bi-metal ferrule—H. 5" x 1 3/8", O.L. 34 1/2"
\$3,000-\$4,000
Robert Pearson Collection

124. Rare Flute System Stick
 Circa 1850—A unique example which is pictured on page 127 of "Cane Curiosa" by Catherine Dike. Ivory handle with air holes for a mouth piece, unique malacca shaft which has been carved in the style of bamboo, six finger holes and a most unique vertical mounted pivoting key, original metal ferrule, Former Catherine Dike Collection
 This is a quality instrument in working condition.—H. 1 1/2" x 1", O.L. 33 1/4"
\$2,000-\$3,000
Robert Pearson Collection



124.



125. Erotic French Ivory Cane

Late 19th Century-A sizeable ivory handle with a Pan engaged with a Venus. The passionate depiction is intricate far beyond the ordinary and with delicately concealed naughty detail between the two bodies which appears at a close look. (Detailed photos on website) It is ripe with symbolism and possibly meant to be an allegorical exaltation of love. Ebony shaft , silver collar engraved "Irmgard" and struck with an "800" hallmark. -H. 3" x 2 3/4", O.L. 37"

\$8,000-\$10,000



125.



126.

126. Erotic Ivory Dress Cane
 19th Century-A substantial L-shaped ivory handle with a symbolic erotic carving, ivory collar, rosewood shaft and a long staghorn ferrule. Excessively rare and deliciously nasty erotic cane (Detailed photos on website) from the days of yore in superb condition-H. 9" x 4", O.L. 34 3/4" \$3,000-\$5,000

127. French Dual Purpose Jeweled Gold Dress Cane
 Late 19th Century-Heavy 18 karat yellow gold knob (0,7 ounce) set with a ruby, emerald and diamonds in the shape of an insect on a deep black ebony shaft with a brass ferrule. The knob with two hallmarks on the rim unscrews to reveal a cavity for, at the time fashionable, cocaine. The cane comes with the custom and original hinged velvet cover of the knob-H. 2 1/4" x 3/4", O.L. 36 3/4" \$3,000-\$4,000



127.



128. Rose Quartz Dress Cane
 Early 20th Century-Polished translucent rich pink color, ebony shaft with gilt metal collar and a horn ferrule-H. 1 3/4" x 1 3/4", O.L. 39 1/4" \$400-\$600

128.

129. Brigg Folk Art Cane

Fruitwood handle depicting a gentleman's morning visit to his favorite outdoor john spot. Full bark malacca shaft , horn ferrule and a plain silver collar with hallmarks and a BRIGG maker's mark. Brigg folk canes are rare .-H. 4" x 4", O.L. 37" **\$1,200-\$1,800**

129.



130. Ivory Girl with Umbrella Cane

Last quarter of the 19th Century- Ivory ball knob carved with a girl kneeling under an umbrella, ebony shaft with plain silver collar and brass ferrule-H. 2 1/4" x 2 1/4", O.L. 37 1/4" **\$1,500-\$2,000**

130.



131. Guilloche Enamel Viennese Dress Cane

Ca. 1890-The pale blue guilloche with hand painted bouquets of roses and ribbons, well figured snakewood shaft with a horn ferrule. This handle is the work of a master artisan's elegant hand. Some repair on the enamel-H. 2 1/2" x 1", O.L. 37" **\$1,200-\$1,600**

131.





133.

132. French Agate Dress Cane
 Early 20th Century-A sizeable dark grey agate Milord shaped knob of a cloudy natural structure and subtle color hues with an Art Nouveau white metal collar, varnished hardwood shaft and a horn ferrule.-H. 3" x 1", O.L. 35 1/2"
\$400-\$700

133. Massive Ivory Frog
 Ca. 1890-Surperb and substantial squatting amphibian perched on a wood stem with clamping front legs and a downward extended back one to secure its balance. The sympathetic flair of the frog with apparent back ridge is accented by a slightly raised head with two large and protruding eyes. Stepped malacca shaft, ivory collar and long horn ferrule. -H 4 3/4" x 4 1/4", O.L. 34 1/2"
\$3,000-\$4,000

134. Dual Purpose Staghorn Cane
 19th Century-Staghorn handle carved with three faces and hollowed for snuff, glass eyes and removable plug. Holly shaft with fine and intricate, traditional silver wire and dot inlay.-H. 3" x 2", O.L. 38 1/2"
\$1,000-\$1,500

134.



132.



135. Ivory Portrait Cane

Late 19th Century-An impressive ivory head of a bearded Russian man wearing a furry Kalpak, sizeable snakewood shaft carved with thorns, wide gilt collar and a metal ferrule. H. 4 ¼" x 2 ¼", O.L. 39"

\$3,500-\$4,500



135.

136. Rabbi Folk Cane

Ca. 1880, Possibly American-Well carved boxwood head with Kippah and ear locks on an oak shaft with a metal collar, braided leather loop and rubber ferrule. Rare motif-H. 3 ¼" x 2", O.L. 35"

\$800-\$1,200

137. Stag Folk-Art Cane

Ca. 1890-A huge stag antler carved with laughing face and long nose out of proportions, shaved malacca shaft and a metal ferrule-H. 7" x 5 ½", O.L. 37 ½"

\$700-\$900



136.

137.





138.

138. French Enamel & Gold Dress Cane

19th Century-Large turquoise enamel knob with hand painted roses in surrounding framing and gold moriage work, some repair to the enamel, scalloped and finely engraved 18 karat gold collar, rosewood shaft and a horn ferrule-H. 2" x 1", O.L. 37 1/2"
\$800-\$1,200



140.

139. Heliotrope Formal Cane

Late 19th Century-Straight tapering and faceted Heliotrope handle of a dark green color with the desirable red spots, Neo-Gothic silver collar and a fruitwood shaft with a metal ferrule-H. 3" x 1", O.L. 37 1/4"
\$600-\$900

140. Ivory Dog Cane

Ca. 1890-Carved ivory dog with two color glass eyes, rosewood shaft with a metal collar and a horn ferrule.-H. 2" x 2", O.L. 38 1/4"
\$800-\$1,000

141. Exotic Hippo Ivory Bird Dress

Ca.1910-A wonderful Art Deco example of a stylized exotic bird with long beak and two color glass eyes, ebonized hardwood shaft with a metal collar and ferrule-H. 3 3/4" x 1 1/2", O.L. 33 1/2"
\$700-\$1,000

142. Porcelain Dress Cane

Late 19th Century-Large white stallion study on a plain plinth with embossed manufacture seals. Lacquer shaft in the Far-Eastern style with metal wire collar and a metal ferrule. Minor repair to ears-H. 3 1/2" x 2 1/2", O.L. 39 1/4"
\$500-\$700

141.

142.

139.



143. Piqué Dress Cane

20th Century, most likely Egypt-Ball knob on a segmented shaft lavishly embellished with dense silver piqué and twisted gold wire inlay. Extremely decorative -H. 4 ½" x 2", O.L. 37 ½"
\$800-\$1,000



144. Sporting Day Cane

Mid-19th Century-A pistol grip shaped horn handle lively carved with two racing horses, plain silver collar, hardwood shaft and a brass ferrule-H. 3 1/2" x 3 1/2", O.L. 39"
\$800-\$1,200



145. Hard Stone Dress Cane

Late 19th Century-The ball handle being a variety of turquoise, white metal collar, dark rosewood shaft and a horn ferrule. -H. 1 ¾" x 1 ¾", O.L. 36 ½"
\$400-\$700



146. Ivory And Horn Cat Cane

Substantial and nicely carved ivory cat head on a long and also carved horn stem with an engraved silver collar "Maczi 1897 aug 18", real malacca shaft and a long horn ferrule.-H. 8" x 2", O.L. 37"
\$1,800-\$2,500





147.

147. Early Dutch Aristocrat's Cane with Cat

Ca. 1800 -A substantial staghorn handle carved with an interior scene depicting a standing Nobleman watching his wife working on her loom. . The scene is embellished with a cat with a wool ball on the checkered flooring and a column with a twisting vine, grapes and vine leaves in the background. Exceptionally fine detail. There is a wide horn collar on top of the real malacca shaft with a weathered surface. -H. 7" x 2 1/2", O.L. 38 3/4" **\$1,500-\$2,500**

148. Penis Trophy Cane

London 19th Century-A staghorn greyhound head handle with glass eyes on a dried, stretched and twisted bovine member with metal core and white metal collar and long ferrule. The head with silver roundel signed "Swaine & Co. London" the predecessor of Brigg. -H. 3 3/4" x 2", O.L. 35 1/4" **\$500-\$800**



148.

149.

149. Boar Trophy Cane

19th Century-Silver handle with a giant pair of wild hog tusks, coco palm wood shaft and a brass ferrule-4 3/4" x 4 1/2", O.L. 36 1/2" **\$700-\$900**



150. Hard Stone Dress Cane

Late 19th Century, possibly French-Milord shaped knob of the dark red mineral corundum (ruby) in native green rock, rosewood shaft, gilt collar and a horn ferrule. -H. 2 3/4" x 1", O.L. 37" **\$400-\$700**

150.

151. Victorian Dog Cane

Ca. 1880-Massive silver handle, cast and finely chased in the shape of a dog with long hair, buckle collar, ebony shaft with a metal ferrule. Long integral collar with beaded ring and engraved initials-H. 3" x 2". O.L. 34 1/2" **\$1,000-\$1,500**



151.

152. Early French Cane

First half of the 19th Century. Large and straight mushroom shaped white porcelain handle with an octagonal stem highlighted with gold lines and a round top painted with a family coat of arms with the Gallic rooster. Ebony shaft with a gilt collar and horn ferrule-H. 3 1/2" x 1 3/4", O.L. 38 1/2" **\$800-\$1,000**

153. Ritual Klan Skull Cane

American, 19th Century- Kongo wood knobbed shaft with an ivory skull roundel at the top. Very rare and well used cane with an intense age patina. Oral legion from the consignor is that it belonged to a member of the Ku Klux Klan from Pulaski, Tennessee,-H. 1 3/4" x 1 1/2", O.L. 38 1/4" **\$1,000-\$1,600**



153.

154. Hippo Ivory Cane

19th Century-Two pieces hippo ivory handle in a modified crook shape with a great Mephistopheles portrait, stepped malacca shaft, hallmarked plain silver collar and metal ferrule.-H. 3 1/2" x 2 1/2", O.L. 34 1/4" **\$1,000-\$1,500**



152.



154.



157.



156.

155. Hard Stone Dandy Cane

Late 19th Century-Falcon eye ball knob of shimmering brown color, ebony shaft with a beaded metal collar and a horn ferrule-H. 1 1/2" x 1 1/2", O.L. 36 1/2" \$400-\$600

156. Silver Dress Cane

Ca. 1900-A mint German Art Deco crook handle, dark rosewood shaft and a horn ferrule. -H. 4 3/4" x 4 1/4", O.L. 36 1/2" \$500-\$800

157. Art Nouveau Dress Cane

Ca. 1890- A small derby handle with long stems chased with lilies of the valley on one side and thistles on the other, ebony shaft with a metal ferrule. German & 800 hallmarks.-H. 3" x 3", O.L. 36 1/2" \$400-\$600

155.

158.

158. European Ivory Lion's Head Cane

Early 19th Century-A finely carved ivory handle with the King of the Jungle, glass eyes, ebony shaft and a white metal ferrule.-H. 3 1/2" x 1 3/4" \$800-\$1,200

159. Rare Organic Material Cane

19th Century-Fashioned of a single piece of dried and plain turned possibility rhino hide with a leather loop attached to a braided leather collar, metal ferrule. Dark, naturally oxidized surface-7 1/4" x 3/4", O.L. 34 3/4" \$800-\$1,000

159.



160. Hard Stone Dress Cane

Ca. 1910-Orange yellow jade handle with a foggy structure, rosewood shaft with metal collar and a horn ferrule-H.3" x 1", O.L. 38 1/4"
\$400-\$700

161. Feminine Ivory Dog Dress Cane

Late 19th Century-A carved French ivory dog with floppy long ears and two color glass eyes, ebony shaft with a metal collar and ferrule-H. 1 1/4" x 1", O.L. 35 1/2"
\$400-\$600

162. Asian Ivory Dress Cane

Ca. 1880-A straight, finely and intricate carved ivory handle with birds and butterflies and a dragon in the clouds, Turned top and multiple ornate collars, ebony shaft and an ivory ferrule.- H. 8" x 1", O.L. 37 1/2"
\$700-\$1,000

163. Agate Dress Cane

Early 20th Century-Polished gray green ball handle with natural white bands, ebonized fruitwood shaft, Art Nouveau collar and a metal ferrule-H. 1 1/2" x 1 1/2", O.L. 37 1/2"
\$400-\$600

164. Russian Piqué Dress Cane

Ca. 1880-Opera shaped handle and its holly wood stem with hundreds of silver wire and dot inlay on a veined hardwood shaft with bound leather collar and a horn ferrule. -H. 9" x 3", O.L. 36 3/4"
\$400-\$600



165.



166.



165. Art Nouveau Day Cane
Ca. 1900-L-shaped silver handle
chased with thistles and personalized
with engraved initials on its oak
branch shaft with a worn out ferrule.
-H. 3 1/2" x 2 1/2", O.L. 34 3/4"
\$400-\$600

166. Folk Art Duck Cane
20th Century-Carved fruitwood
handle, glass eyes, malacca shaft,
leather collar and a metal ferrule-H.
6" x 2", O.L. 36"
\$500-\$800

167. Hard Stone Dress Cane
Ca. 1880- Layered, grey agate
straight and fluting handle with a
Victorian gold plated collar, slender
ebony shaft with a tiny metal
ferrule-H. 2 1/2" x 3/4", O.L. 37 1/4"
\$300-\$400

168. German Dress Cane
Late 19th Century-Lava stone ball
knob, mottled structure and colors
from ochre to dark brown, veined
coco palm shaft , metal ferrule and
chased silver collar with German
hallmarks-H. 1 3/4" x 1 3/4",
O.L. 37 1/2"
\$400-\$700

169.



167.



169. Art Nouveau Dress Lady Cane
Ca. 1900-Sterling L-handle, ebony
shaft and a brass ferrule. German
hallmarks and maker's marks-H. 5
1/2" x 3", O.L. 35"
\$400-\$600

168.



170. Alpine Hiking Cane

Early 1900s-Wild goat horn handle on a deer foot adjustable in a vertical position for hiking, maple shaft with a steel spike ferrule. -H 9 3/4" x 3", O.L. 38 3/4"
\$400-\$600

171. French Heliotrope Dress Cane

Early 20th Century- Substantial jasper handle of striking variegated structure and mixed colors with a chased metal collar and shaved bamboo shaft with a brass ferrule. -H. 3" x 1", O.L. 36"
\$600-\$900

172. Staghorn Hunting Cane

19th Century-Straight staghorn handle carved with a running stag, well figured blackthorn shaft with gilt collar and a brass ferrule.-H. 5 x 1 1/2", O.L. 37 1/2"
\$500-\$600

173. Gold Dress Cane

Late 19th Century-Classic gold filled ornate knob with alternating plain and floral panels, engraved initials "FG", coco palm wood shaft with a horn ferrule. Minor dents but still good condition.-H. 2" x 1", O.L. 1 7/8" x 2 1/4", O.L. 36 1/2"
\$300-\$500

174. Hard Stone Dress Cane

Late 19th Century-Gold stone ball handle of a deep blue color with white sparkles, ebony shaft with a gilt metal collar and a horn ferrule.-H. 1 1/2" x 1 1/2", O.L. 38 3/4"
\$500-\$800



171.



174.



172.



173.



170.



175.

175. Persian Mullah Cane

Mid-19th Century-Substantial knob and shaft entirely covered with dense metal and ivory micro mosaics building geometrical Oriental patterns-H. 3 3/4" x 2", O.L. 34"
\$700-\$1,000

176. Horn / Sterling Dress Cane

Circa 1880-A carved horn with an ornate sterling end cap, signed ornate collar, ebony shaft and a brass ferrule-H. 5" x 3", O.L. 37"
\$400-\$600

177. Presentation Coach Cane

Circa 1830-A silver end cap with a hard stone atop which is inscribed from a daughter, ornate scalloped coin silver collar, two coin silver eyelets, malacca shaft and a 2 1/2" bi-metal ferrule-H. 15/16" x 1 1/2", O.L. 38"
\$400-\$600

176.

177.



178.

178. Damascene Dress Cane

Circa 1900-A 1 1/2" damascene ball, damascene collar, ebony shaft and a bi-metal ferrule-O.L. 36"
\$400-\$500

179. Sterling Dress Cane

Late 20th Century-A custom silver cane from the quality shop of Charles Daugherty, hallmarked CWD and signed sterling, ebony shaft and a brass ferrule-H. 5" x 3", O.L. 36 1/2"
\$500-\$700

179.



180. Ivory Snake and Frog Cane

20th Century-Carved ivory handle with a snake swallowing a frog, signed sterling ribbed collar, rich snake skin shaft and a 1 1/2" ivory ferrule-H. 5" x 1 1/2", O.L. 36"
\$800-\$1,200



180.

181. Stag Snake Cane

20th Century-A carved rattle snake with two color glass eyes done in the Japanese style, arts and crafts silver collar, rich mahogany shaft and a bi-metal ferrule-H. 2 1/4" x 2 1/2", O.L. 37"
\$500-\$800

182. U.S. Frigate Constitution Nautical Cane

19th Century-A silver handle which is inscribed "Piece of live oak from the U.S. Frigate Constitution," drilled lanyard holes, live oak shaft and a bi-metal ferrule-H. 1 1/8" x 1 1/8", O.L. 38"
\$500-\$1000

182.



183. Horn Dress Cane

Circa 1900-Possibly Rhino horn, gold filled inscribed collar, malacca shaft and a brass ferrule-H. 4 1/2" x 4", O.L. 35"
\$600-\$800

184. Tiffany Dress Cane

Early 20th Century-A stylized mahogany shaft, hand hammered signed "18kt Tiffany (260)" collar and a horn ferrule-H. 4 1/4" x 7", O.L. 34 1/2"
\$500-\$800

181.

184.



183.



185. Ivory Dog Cane

Circa 1880-A finely carved dog with two color glass eyes, ornate British collar which has an R Hallmark and others which are unreadable, large ebony shaft and a bi-metal ferrule-H. 3 3/4" x 1 3/4", O.L. 36"

\$1,200-\$1,500



185.

186. Porcelain Dress Cane

Circa 1900-A hand painted porcelain handle which is done in the style of Meissen, rich mahogany shaft and a bi-metal ferrule-H. 2 1/2" x 1 3/4", O.L. 36"

\$400-\$700



188.

187. Cloisonné Dress Cane

Circa 1890-A Chinese cloisonné handle in nice condition, zebra wood shaft and a bi-metal ferrule-H. 1 1/2" x 9", O.L. 36"

\$400-\$600

188. Ivory Child's Cane

Circa 1875-A carved wild cat handle, small brass ferrule, ebonized shaft-H. 2 1/4" x 3", O.L. 31"

\$300-\$400

189. Stag Dress Cane

Circa 1880-Stag handle with good patina, ornate signed sterling collar with dents and dings, extremely fine and thick snakewood shaft and a metal ferrule-H. 4 1/2" x 1 1/2", O.L. 33"

\$300-\$500



189.

187.

186.



190. Tepliz Style Hiking Cane

Early 20th Century-A wonderfully carved hound with silver overlay and pique work throughout the head, two color glass eyes, small brass collar, over 30 hiking badges attached, thick malacca shaft and a spiked metal ferrule-H. 6" x 3", O.L. 37 1/2"
\$500-\$700



191.



190.

191. Art Deco Dress Cane

Early 20th Century-Sterling end cap, collar is signed and has the initials "R.D." as the maker's mark, triangular well figured snakewood shaft and horn ferrule-H. 4 1/2" x 2", O.L. 33 1/2"
\$400-\$600



192.

192. Erotic Folk Cane

Late 19th Century-A one piece carved cherry branch which has a fantasy creatures face which doubles as a nude lady and a long brass ferrule-O.L. 35"
\$400-\$600



193. Silver Niello Dress Cane

Circa 1865-A large silver handle with minor dings, silver collar which is signed "D.C.", malacca shaft and a 4" brass ferrule-H. 4" x 3", O.L. 36"
\$500-\$700



193.

194. 14kt Gold Dress

Dated 1934-A presentation 14kt handle which is dated 1934 but is probably Ca. 1875 (1934 is probably the date it was given as a later gift), thick malacca shaft and a horn ferrule, probably a defensive cane due to the weight of the handle-H. 2 1/4" x 1 3/8", O.L. 36"
\$1,200-\$1,500



194.



197.

195. Silver Niello Dress Cane
 Circa 1930-A heavy well worked silver handle, Niello collar, thick ebony shaft and a bi-metal ferrule-H. 1 ½" x 2", O.L. 35 ½"
 \$400-\$600

196. Sterling Fox Cane
 Late 19th Century-A very finely cast sterling handle, sterling hallmarked collar attached, live oak shaft and a metal ferrule-H. 5" x 3", O.L. 35 ¾"
 \$600-\$800

197. Ivory Dog Dress Cane
 Circa 1900-An ivory boxer or bulldog with two color glass eyes, ornate sterling collar, thick malacca shaft and a horn ferrule-H. 2" x 3 ½", O.L. 33 ½"
 \$1,000-\$1,500

198. Full Ivory Dress Cane
 Circa 1890-A carved ivory portrait cane of which is probably Julius Caesar, baleen and ivory shaft and a silver ferrule-H. 4 ½" x 1 ½", O.L. 35"
 \$800-\$1200

199. Parade Flag System Cane
 Early 20th Century-A 48 star flag which is concealed in an ebonized shaft, knob handle and linen flag with a bi-metal ferrule-H. 1 ½" x 1 ½", O.L. 35"
 \$250-\$350

196.



199.



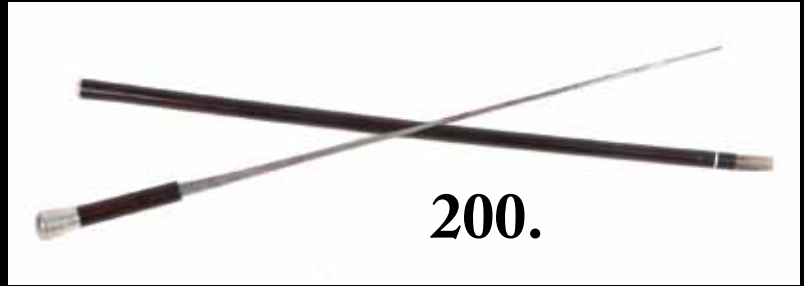
198.

195.



200. Silver Sword Cane

Late 19th Century-A British silver hallmarked handle, 4-sided signed French 24 1/2" blade, exotic wood shaft and a horn ferrule-H. 6" x 1 1/2", O.L. 35"
\$300-\$500



201. Ivory Banana Dress Cane

Circa 1900-A unique carved ivory banana handle, ivory collar, carved and stepped exotic wood shaft and an ivory ferrule. The handle has been professional cleaned.-H. 6" x 1 3/4", O.L. 36"
\$800-\$1,000



202. Ivory and Wood Dress Cane

Circa 1885-A well executed carved wood and ivory bearded gentleman handle with two color glass eyes, ivory collar, ebony shaft and a horn ferrule-H. 4" x 3 1/2", O.L. 35 3/4"
\$500-\$700

202.



203. Buggy Whip Cane

Circa 1900-A one piece malacca shaft with a coin silver compartment which holds the second half of this unique and hard to find system cane-O.L. 36", both pieces attached 70"
\$400-\$600

203.



204. George Washington Historical Society Cane

Circa 1970-A cased example which was issued in an addition of 1,000 canes. William de Matto, Colonial Williamsburg's principle silversmith of the time cast these canes, sculpted after the Jean Houdan bust, handle (1.2 lbs of sterling) and collar are both sterling silver and it has a 14kt gold beaded insert below the bust., American walnut shaft and a silver ferrule. It is #37 of the series and is in its original presentation case in mint condition.-H. 2" x 3", O.L. 36 1/2"
\$1,500-\$2,000

204.



205.

205. Whalebone Scrimshaw Nautical Cane

Circa 1860-A masterful sailor's folk-art cane with an inlaid group of baleen diamonds and circles, full spiral column in cage, whalebone handle with three baleen discs atop, one inch diameter where the shaft meets the handle and no ferrule-H. 1 5/8" x 3 3/4", Spiral L- 5 1/2", Cage -1" x 1", O.L. 35 1/4"
\$6,000-\$9,000



206. Horn Dog Dress Cane

Circa 1925-A carved horn dog with two color glass eyes, great Art Deco look, hammered silver collar, ebonized shaft and a metal ferrule-H. 4 1/2" x 1 1/2", O.L. 34"
\$300-\$400



206.

209.

207. Sterling Horse Lovers Dress Cane

Circa 1900-A heavy cast signed sterling handle with the numbers 1266, small ribbed silver collar, faux bamboo hardwood shaft and a bi-metal ferrule-H. 4" x 2", O.L. 35"
\$400-\$600



207.

208. Carved Wood Glove Holder Cane

Early 20th Century-A better than average carving with two color glass eyes, push button lower jaw mechanism, metal collar, paint decorated shaft and a horn ferrule-H. 2" x 3", O.L. 36"
\$400-\$600



208.

209. Buggy Whip Cane

Dated 1892-A nice example of a patented Springfield Ohio horse whip, original and signed screw on handle, leather covered shaft with minor damage and its full screw on attachment and a metal ferrule-H. 1 3/4" x 3/4", O.L. 37", O.L. together 70"
\$400-\$600



210.

210. Cased Presentation Asian Full Ivory Dress Cane

Early 20th Century-A carved lion and elephant handle, silk lined box, sectional ivory shaft and a carved ivory ferrule-H. 4 1/2" x 3/4", O.L. 36"
\$1,300-\$1,600



211.



211. Erotic Meerschaum Pipe

19th Century-A carved erotic pipe in fine condition of a couple involved in a small private party, 2" amber stem, detailed photos website, 5 1/2" x 2" \$3,500-4,000

Private Ft. Lauderdale Collection

212. Erotic Ivory Brothel Cigar Match Safe

19th Century-A whimsical carved ivory tusk with the inscription "Dirty Lady Saloon", wood top and bottom, detailed photos website, striker on rear and high relief carvings. The process is open the top, remove the match, strike the match, place match between the legs and light the cigar, fine condition.-2" x 2 1/2" x 3 3/4"

\$4,500-\$6,500

Private Ft. Lauderdale Collection

212.



213.

213. Erotic Ivory Nun Balance Toy

19th Century-The best of the best. A unique ivory balance toy carved with museum quality work. The balance staff is a ribbed carved cone with a cross and a penis atop with a walnut base (detailed photos website) The nun is a very unique carving both front and back with metal rods that extend to an ivory pair of balls. The nun balances in a most unusual place on the penis.-
Cone 8" x 3 1/2", Nun 5" x 2 3/4", Balls 1 1/2" diameter,
O.L. 10 1/2" x 8 1/2" x 3 1/2"
\$15,000-\$18,000
Private Ft. Lauderdale Collection





214.

214. Fancy Cane Stand

A quality American made contemporary walnut cane stand done in a fan pattern for 14 canes-29" x 7" x 37"

\$800-\$1,200

215. Arts and Craft Cane Stand

Circa 1900-A unique cane stand with a bronze base with a traditional Art Nouveau design-32" x 12 1/2" x 8 1/2"

\$400-\$700

215.





Kimball M. Sterling, Inc. (TFL-1915)
125 West Market Street
Johnson City, Tennessee 37601
kimballsterling @ earthlink.net
423.928.1471

Member National Auctioneers Association
© Copyright 2010 Kimball M. Sterling, Inc.

Photography by James Price

Catalog Design by KT Design, LLC
www.kristaft.com