

KIMBALL & VICTORIA STERLING PRESENT A

Fall CANE AUCTION



**SATURDAY,
NOVEMBER 17TH, 2012**

11:00 A.M. EASTERN

PREVIEW

FRIDAY, NOVEMBER 16TH

1:00-5:00 P.M. AND

NOVEMBER 17TH AT 9:00 A.M.

WWW.AUCTIONAUCTION.COM

KIMBALL M. STERLING, INC.

TFL-1915

TERMS & CONDITIONS

1. Cash or check. A 20% buyers' premium will be added to the hammer price as part of the sale price for all bidders. We reserved the right to hold purchases until the buyers checks clears if buyer is not known by us. Bank letter of credit is acceptable.

2. Mail or phone bids are accepted; the firm may require a deposit.

3. Kimball M. Sterling, Inc. has endeavored to catalog and describe the property correctly. All property is sold as is and neither the auction company nor the consignor will be responsible for descriptions, genuineness, provenance or condition of the property. No statement in the catalog made orally at the sale or otherwise shall be deemed to be a warranty, representation, or an assumption of liability.

4. In the event of any dispute between bidders, the auctioneer shall have total discretion to determine the successful bidder, in which his determination shall be final or to re-offer and resale the article in dispute. Title of the item or items purchased by the bidder will pass at the fall of the gavel and declaration of bidder. This is not an approval auction. All measurements are approximate.

5. Principal auctioneer: Kimball M. Sterling #2467. B. Elizabeth Sterling, auctioneer # 5757. Firm Kimball M Sterling Inc. TFL-1915

6. Bidders may bid live on the Internet by visiting <http://www.auctionauction.com> You may also view the auction at this site and bid by phone.

7. Communications:

Telephone 423-928-1471.

Fax 423-928-2816.

Cellular 423-773-4073, 423-773-4072.

Email kimballsterling@earthlink.net

8. Kimball M Sterling has worldwide shipping available. Mr. We do not ship protected items overseas but can put you in contact with a source that is very reliable and can handle all of your needs.

9. Kimball M. Sterling, Inc. will not be held responsible for bids received on the day of the auction, unexecuted absentee bids, phone bidders not contacted or slow Internet bids. Although we do attempt to get all bids executed problems do occur. There will be no recourse from the bidder. We will not be responsible for items left on our location for over 30 days.

10. Sale will be conducted at 125 West Market Street, Johnson City, Tennessee. 37604. Announcements day of the sale take precedence over pre-sale advertising. Any litigation that pertains to this auction will be conducted in the county of Washington in Tennessee and is agreed upon by registering for this auction.

11. Airport is the Tri-Cities Airport, which is approximately 20 miles from the gallery. Internet catalog and live bidding available at www.auctionauction.com Best Western Hotel: 423-282-2126. A very fine hotel which offers Sterling Auction a discount rate is the Carnegie Hotel 1216 W State of Franklin Rd, (423) 979-6400.

12. Please call for condition report on sale lots or email us. We do send out multiple photos by email of any lot in the auction. By registering for this auction you accept the terms.

13. Parking service is free.

KIMBALL & VICTORIA STERLING PRESENT A

Fall CANE AUCTION



**SATURDAY,
NOVEMBER 17TH, 2012**

11:00 A.M. EASTERN

PREVIEW

FRIDAY, NOVEMBER 16TH

1:00-5:00 P.M. AND

NOVEMBER 17TH AT 9:00 A.M.

**LIVE ON THE INTERNET AT
LIVEAUCTIONEERS.COM**

**TWO TIME WINNER OF BEST OF SHOW
FROM THE NATIONAL AUCTIONEERS ASSOCIATION**

**KIMBALL M. STERLING AUCTION GALLERY
125 WEST MARKET STREET
JOHNSON CITY, TENNESSEE 37601
KIMBALLSTERLING @ EARTHLINK.NET
423.928.1471**

**KIMBALL M. STERLING, INC.
TFL-1915**

1. Toledo Dress Cane

Ca.1885-A remarkable Toledo steel knob with dense 24 karat yellow gold and silver wire Damascene work with arabesque and trellises within multiple frames, ebony shaft and a horn ferrule. The quality work speaks for the Zoluagas workshop from Eibar H. 1" x 1", O.L. 37"

\$500-\$700

2. Agate Dress Cane

Early 20th Century-The polished Milord handle of a natural gray color and subtle structure, ebony shaft with a yellow metal collar and a horn ferrule.

H. 3 1/2" x 1", O.L. 37 3/4"

\$400-\$600

3. Chinese Silver & Gold Cane

Late 19th Century-Silver crook handle with extensive and deep hand chasing with various birds among flowering twigs all highlighted with 24 karat gold damascene work, the collar is engraved "DIEN SUCCR. VINH-SA DEC."The handle has some dents and comes on a coco palm wood shaft with a brass ferrule.-H. 4 1/2" x 4", O.L. 36 3/4"

\$600-\$800

4. Flick Stick Cane

19th Century.-An ivory knobbed ebony cane with a metal ferrule and an ejecting almost 5 3/4" angular, partly and beautifully etched, spike blade with locking feather and a white metal cap. Superb and perfectly working.

H. 1 1/2" x 1 1/2", O.L. 36 3/4"

\$1,500-\$2,000



4.



1.



2.



3.

5. Two Horn Handles with Daggers

Ca. 1880-The first L-shape with knobs is possibly rhino horn and has a push button locking device and a high end, "TOLEDO" signed and finely etched, diamond shaped and tapering 27" long blade, the second, also horn and L-shape with a bent hoof and 8" long plain and diamond shaped blade.
H. Respectively 5" x 3 3/4", 6" x 3 1/4"
\$800-\$1,200



6.

6. Two Horn Handles With Dagger And With Sword

Ca. 1880-The first with a large hoof and applied silver horse shoe engraved "C. Bruschi" is fitted with a quarter turn locking device and a diamond shaped, 12 3/4" long and plain blade, the second, plain and L-shape greenish Siam horn has a push button locking device and an angular, 14" long and tapering plain blade. Both handles are apparently marked by age but still can be easily refreshed and fitted with appropriate shafts and become excellent dagger canes. -H. Respectively 5" x 3 3/4" and 5 1/2" x 3 1/2"
\$800-\$1,200

7. Brigg Sword Cane

Ca. 1890-Silver wire filigree handle on an ebony shaft with a horn ferrule. 8" down from the top, the shaft breaks in two pieces through a friction lock device to release a 13 3/4" square, beautifully jeweled and etched steel blade signed "BRIGG" and "LONDON" and monogrammed "RK".
H. 3 3/4" x 1 1/4", O.L. 37 1/4"
\$1,500-\$2,000

7.



8. Mountain Hiking Staff Weapon of Royal Provenance

Ca. 1890-Fashioned of two silver ash branches with brass fittings and 4 1/2 in. tall and sharp steel spike which also makes of it a redoubtable weapon. Easy to pack and to transport, the two well-dressed parts can be fitted together in a straight line to become a 70 in. tall useful staff. Still retains the contemporary castle assets band-labels numbered 6. & 6. The Royal provenance outguns rarity and adds luster for the desirability. This cane originates from the heirloom dispersal sale “WORKS OF ART FROM THE ROYAL HOUSE OF HANOVER” organized by Sotheby’s in the castle of Marienburg in 2005. The cane still bears the inventory castle assets metal label numbered “1028”. -O.L. 2x37 1/4”

\$600-\$900

8.



9. Countryside Cane of Royal Provenance “1028”

Ca. 1890-T-shaped dark horn handle on a blackthorn branch shaft with a white metal collar, braided leather loop and spiked metal ferrule. The cane is market fresh and originates from the unprecedented heirloom sale of the “WORKS OF ART FROM THE ROYAL HOUSE OF HANOVER” organized by Sotheby’s in the fairytale castle of Marienburg in 2005. Anyone desiring an item with a recorded Royal source will be here rewarded, particularly that the cane still bears the inventory castle assets metal label numbered “1028”.

H. 4 3/4” x 1 3/4”, O.L. 38 1/2”

\$700-\$1,000

9.



10. Countryside Cane of Royal Provenance “1030”

Ca. 1890-Dark horn knob on a blackthorn branch shaft, braided leather loop and metal ferrule. Dispersal sale of the “WORKS OF ART FROM THE ROYAL HOUSE OF HANOVER” organized by Sotheby’s in the fairytale castle of Marienburg, in October 2005. Anyone desiring an item with a recorded Royal source will be here rewarded, particularly that the cane still bears the inventory castle assets metal label numbered “1030”. - H. 2” x 1 1/2”, O.L. 37 3/4”

\$700-\$1,000

10.





13.

12. Ivory Love Depiction Cane

Ca. 1890-Large ivory crook handle carved in relief in the sensual Symbolist taste with an embracing couple in rich foliage framing. Shaved partridge shaft with bound leather collar and a horn ferrule. Possibly French and endorsed by a magnificent surface and suitable wear.

H. 4 ½" x 3 ½", O.L. 36 ¾"

\$1,800-\$2,800

13. Erotic Ivory Cane

Ca. 1880-Unique ivory ball knob carved with three erotic scenes in heart shaped framing. Erotic carving from the days of yore in superb condition with a silky feel to the wearer's hand. Snakewood shaft with an engine turned and gilt collar and a metal ferrule.

H. 2 ¼" x 2 ¼", O.L. 35 ¾"

\$4,000-\$6,000

11.



12.



11. Erotic Nude Cane

Ca. 1895-A large ivory Art Nouveau handle finely carved to depict a Venus in a "V" position showing all her charms, ebony shaft with a hand chased silver collar with hallmarks and a metal ferrule. This is a world class cane and with a great, age grown patina.

H. 3 ½" x 2 ½", O.L. 37"

\$3,000-\$4,000

14. Erotic Ivory Cane

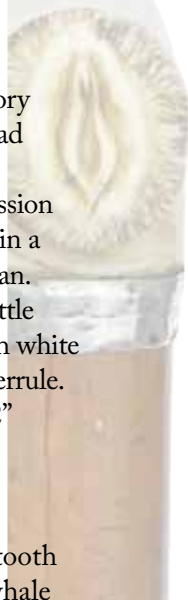
Early 1900s-Ivory handle “His” on the front and “Her” on the back, malacca shaft with an ivory ferrule and a silver collar with London hallmarks. -H. 4” x 1 ¼”, O.L. 33 ¾”
\$1,200-\$1,800

14.



15. Ivory Erotic Cane

English, late 19th Century-Ivory handle depicting a knight’s head with a face marked by a huge mustache and a stunned expression and a feathered hat extending in a suggestively carved female organ. Rarely encountered scarred nettle tree (medlar) branch shaft with white metal collar and white metal ferrule. H. 3 1/4” x 1 3/4”, O.L. 35 1/2”
\$2,000-\$3,000



15.

16. Marine Cane

19th Century-Sperm whale tooth handle carved with an oval whale panel on the top and two different whales on the side. Hardwood shaft carved with a twist bringing to mind a spiraling narwhal tusk, white metal collar and ferrule. Beautiful American whaler cane, with the merits of a great luminosity to the handle and well used surface to the shaft. H. 5 ½” x 2”, O.L. 33 ¾”
\$1,800-\$2,500



16.

17. Stingray Tail Cane

19th Century-Fashioned of the tail of a giant *Dasyatis Sephen* Stingray tail with a dark greenish needle-harsh cutting surface and an impressive 6 ½” tall barbed venom darts. The cane has the allure of a staff and is topped by a substantial silver knob chased with figures and personalized with the initials “W.H.W.” and fitted with a metal ferrule. -H. 3 ½” x 2”, O.L. 39”
\$1,800-\$2,500

17.



18. Nautical Whales Tooth Cane

Ca. 1880-Large whale tooth handle carved to depict a whale on a whalebone stem with baleen washer. Ebonized hardwood shaft and a whale tooth ferrule.

H. 5 5/4 x 1 1/2", O.L. 35 3/4"

\$2,000-\$3,000



18.

19.

19. Black Coral Cane

19th Century-Segmented all black coral cane with a white metal ferrule. Possibly one of the rarest organic material canes, this Anglo-Colonial specimen spent all its life in a protective cabinet and is a first rate collectable.

Black coral grows slowly in deep waters, and many species have long life spans. One specimen was reported by scientists to be more than 4,200 years old with a growth rate of only five micrometers per year.

H. 1 1/2" x 1", O.L. 35 3/4"

\$2,000-\$3,000



20. Whalebone Nautical Cane

Ca. 1865-A long semi-crook handle with multiple sperm whale tooth parts and baleen washers on a whale bone shaft with a metal ferrule. This cane is representative for the golden age of whaling.

H. 6 3/4" x 2 3/4", O.L. 36 1/4"

\$1,500-\$2,000



20.

21. Excessively Rare Marine Cane

Mid. 19th Century-Walrus ivory pistol shaped handle on a substantial, one piece baleen shaft with a metal ferrule. The plain and slightly tapering shaft itself shows the specific layered structure of the noble material of the ocean and its dark color with coveted brown-greenish hues.

H. 3 1/2" x 1 1/2", O.L. 33 3/4"

\$1,500-\$2,000



21.



22. Marine Vertebrae Cane

Ca. 1900-A superior, hardly encountered specimen of the classic shark vertebrae cane with an ivory fist handle and dark and blond tortoiseshell washers and an ivory ferrule. Anglo-Colonial and perfectly preserved.

H. 2 1/2" x 2", 35"

\$1,000-\$1,500

22.



23. Stingray Tail Cane

19th Century-Fashioned of the tail of a giant Dasyatis Sephen Stingray tail with a dark greenish needle-harsh cutting surface and two impressive 7 1/2" and 5 1/2" tall barbed venom darts. The cane is topped by a T-shaped shagreen handle and fitted with a metal ferrule.

-H. 4 1/4" x 1 1/2", O.L. 35 3/4"

\$1,800-\$2,500

23.



24. Marine Ebony, Whale Tooth, Tortoiseshell and Baleen Cane

Late 19th Century-Octagonal ebony knob with alternating whale tooth and tortoiseshell veneer on the side and a baleen shield on the top, ebony shaft carved with a twist somehow similar to the legendary narwhal and fitted with a metal ferrule.

-H. 3 1/2" x 1 3/4", O.L. 35 1/4"

\$800-\$1,200

24.



25. Tortoiseshell and Silver Dress Cane

19th Century-Finely chased silver knob with engraved initials "FB" on a full tortoiseshell shaft with a horn ferrule. The plain, straight and fluting shaft shows the valued marbled and well streaked, warm mellow honey colors of tortoiseshell with the magical translucency and discreet shine of the noble marine material. High end French quality.

H. 1 3/4" x 1 1/2", O.L. 35"

\$1,500-\$2,000

25.



26. Tortoiseshell and Ivory Physician Cane

19th Century—A well figured tortoiseshell crook handle with a coiling ivory snake on its long neck. Smooth partridge shaft with a metal collar and matching ferrule. By tradition canes with snakes were reserved to physicians and this example is outstanding and luxurious and well preserved.

H. 9 ¾" x 4", O.L. 36 ¼"

\$1,500-\$2,000

27. Tortoiseshell Dress Cane

19th Century—Derby tortoiseshell handle, ebony shaft with a long and scalloped fire gilt collar and no ferrule. Ergonomically designed for the perfect fit to the hand, the handle shows the valued marbled and well streaked, warm mellow honey colors of tortoiseshell with the magical translucency and discreet shine of the noble marine material.

Possibly French .

H. 4 ¾" x 2", O.L. 36 ½"

\$600-\$900

28. Hard Stone Dress Cane

Ca. 1900—Substantial spinach green Nephrite jade knob carved with a spiraling ribbed top, braided silver wire collar, malacca shaft and a metal ferrule. This cane is in the taste of Carl Faberge, has most likely Russian ties and belongs to the upscale jewelry objects or Virtue. Its phallic profile is either meant to arouse sexual desires or can be understood as sign of fertility.—H. 4" x 1 ½", O.L. 38"

\$4,000-\$5,000

27.



28.



26.



29. Guilloche Enamel Dress Cane

Ca. 1890-Hexagonal and tapering with guilloche panels iridescent white enameled on the side and royal blue on the domed top centered with a sapphire cabochon, rosewood shaft and a metal ferrule. The work of a master artisan's hand with several hallmarks beside a "900" and a "G.A.S." for the legendary Georg Adam Scheid from Vienna. H. 3 1/4" x 1", O.L. 34 1/2"
\$1,200-\$1,800



29.



30. Ivory and Tortoiseshell Rabbit Cane

Ca. 1890-Straight tortoiseshell handle with an inset long eared ivory rabbit head, rosewood shaft with an ivory collar and a metal ferrule. Charming French mascot. -H. 7 3/4" x 1 1/2", O.L. 39"
\$1,200-\$1,600



31.

31. Giant Cloisonné Russian Cane

Ca. 1900-A finely crafted cloisonné enamel silver Opera shaped handle in a very unique large size, malacca shaft and a metal ferrule. The handle with two Russian hallmarks survived the test of time intact while the shaft aged well with a rich patina. H. 5 1/4" x 2 1/2", O.L. 36"
\$2,000-\$3,000

32.

32. Hippo Ivory Equestrian Cane

Ca. 1900-Very large hippopotamus ivory handle with three horse heads at the front and a hoof at the back, malacca shaft and a 3" tall horn ferrule and a silver collar with a memorizing shield engraved "PRESENTED TO F. THOMPSON. APRIL 21st 1904". The horse heads have braided manes, back leaned ears and stretching, open muzzles give the impression to be at full gallop and are tightly ordered to fit in the tooth. There is an expertly secured crack to one of the horse heads and a full set of authenticating Birmingham hallmarks to the collar. -H. 5" x 1 3/4", O.L. 35 1/2"
\$1,500-\$2,000



30.

33. Nast Eagle Hard Stone Cane

Late 19th Century-Substantial, figural gray agate dog head with a well chased silver gilt collar and a well-dressed malacca shaft with a brass ferrule. This cane is an accomplished example of very desirable and exceedingly rare type of canes, which came into fashion with the impact of Carl Fabergé. It is given more exclusivity by a pristine condition, shows all the finesse and quality one could expect and would grace any collection, as advanced as it can be.-H. 5" x 2 ¼", O.L. 35 ¼"
\$5,000-\$6,000



33.

34. Ivory Horse Cane

Ca. 1880-Stretched pistol grip handle with a graceful trotting horse, malacca shaft and an ivory ferrule. The tiny horse is micro carved in a remarkable, high relief and with an extraordinary fine detail.-H. 5 ½" x 2", O.L. 32 ¾"
\$1,200-\$1,800



34.

35. Grand Class Jewelry Dress Cane

Ca. 1920-Sizeable and well-proportioned deep black onyx handle with longer, plain and tapering stem and a flattened, round knob. An 18 karat white gold collar with seven tines studded with round, brilliant cut diamonds and seven larger ones, individually hanging between the deep indentations creates the effect of a sparkling shooting-star. The apparent high degree of technical perfection speaks here for a French origin, and the bold outline of the knob as well as its color combination are clear hints for an Art Deco taste Ca. 1920, a period marked by luxurious and opulent accessories and often referred to as the Age of Elegance. It surely is at the top end of quality range and intact.

H. 4" $\frac{3}{4}$ " x 1 $\frac{1}{4}$ ", O.L. 37 $\frac{3}{4}$ "

\$5,000-\$7,000

35.



36. Ivory Elephant Cane

19th Century-An ivory elephant standing on a pedestal with a long trunk flanked by a pair of mighty tusks. Unusual fine detail to the face with tiny eyes, skin and tail, malacca shaft and a metal ferrule. Top-rate London quality and praised by age.

H. 3 $\frac{3}{4}$ " x 2 $\frac{1}{2}$ ", O.L. 36"

\$2,000-\$3,000

36.



37. Rock Crystal Eagle Head Cane

Ca. 1900-Rock crystal eagle head with an upright, open beak with gold and deep blue sapphire inset eyes, 18 karat engine turned and royal cobalt enameled collar with two French hallmarks, ebony shaft and a metal ferrule. The impact of Fabergé in Paris at the Exposition Internationale Universelle in 1900 proved strong, and the Russian style provoked great fascination. H. 2 3/4" x 2 3/4", O.L. 37"

\$3,000-\$4,000

37.



38. Massive Ivory Frog

Ca. 1890-Surperb and substantial squatting amphibian perched on reeds with clamping front legs and a downward extended back one to secure its balance. The sympathetic flair of the frog with apparent back ridge is accented by a slightly raised head with two large and protruding eyes. Ebonized hardwood shaft with a metal ferrule.

H 5" x 2 1/4", O.L. 38 1/4"

\$2,500-\$3,500

39. Hard Stone Dress Cane

Ca. 1870-Rock crystal Derby handle with silver fittings micro chased in the Empire taste on an ebony shaft with a horn ferrule. Three tiny hallmarks repeat on the silver parts and attest for the French origin. It is a high end collectable, mirrors the opulent Napoleon III taste and is in mint condition.

H. 2 1/4" x 2 1/2", O.L. 36 1/2"

\$1,500-\$2,200

38.



39.



40. Ivory Cat Cane

Ca. 1890.-Nicely carved ivory cat and mouse handle, ebony shaft with a metal collar and ferrule. The feline character is well rendered and in great detail.-H. 3 3/4" x 3", O.L. 37 1/4"
\$1,800-\$2,500

40.



41. Rose Quartz Dress Cane

Early 20th Century- Milord rose quartz handle of the desirable intense tint with a white metal collar, rosewood shaft and a brass ferrule. Most likely French and well preserved.-H. 3" x 1 1/4", O.L. 37 1/4"
\$400-\$500

41.



42. Hysteria Erotic Godemichie Cane

Late 19th Century.-Large ivory compartment handle, Oryx horn shaft and a silver ferrule. The handle unscrews to reveal one cavity with a 3 1/2" long ivory "Godemichie" with an erotic engraving to initiate the girl in sexual delights and another cavity with the tip of a penis. The later is 2 1/2" long and can be attached by a threaded part to the handle which becomes a total of 8 1/2". Two sizes for both young and old. The aphrodisiac Oryx horn for the shaft is intentional as it has the appearance of an erect penis. Erotic canes of this quality very rarely offered and this one is not only in untouched condition, but importantly oral legend states it once belonged to Almyer Lobel-Riche, illustrator and engraver of the beautiful-grotesque and erotic arts.-H. 6 1/2" x 1 1/2", O.L. 33 3/4"

Consult our website for additional pictures

\$7,000-\$9,000

42.



43. Ivory Pierrot Cane

19th Century-The handle is fashioned of the tip of an elephant tusk and much of that mythic quality of the clown adheres to this portrait with a compelling smile, frilled collaret and oversized, outlandish conical bonnet. Malacca shaft with a plain silver collar with obscured London hallmarks and a staghorn ferrule.-H. 6 3/4" x 1 3/4", O.L. 36 3/4" \$2,500-\$3,500

44. Ivory Erotic Cane

Ca. 1890-A sizeable ivory handle with a beautiful young girl and an old man together twined in an erotic embrace, malacca shaft and a metal ferrule. The passionate depiction is intricate and delicately covers the naughty detail between the two bodies which only appears at a close look. It is ripe with symbolism and possibly meant to be an allegorical exaltation of love. Rarest of rare, this cane attests originality and was probably commissioned by a wealthy person for his individual pleasure, and perhaps, also willing with his amazing cane, to entertain and amuse or even initiate in the worldly temptations and pleasures.-H. 4 3/4" x 2", O.L. 36 3/4" \$4,000-\$5,000



43.



44.

45. Ivory Black Man Cane

Ca. 1870-Character carving of a Black Man head with inset glass eyes in rarely encountered "Ivoire Teinté" (Stained ivory), makassar ebony shaft with a metal collar and a metal ferrule. This French cane strikes all the notes a collector's soul loves and has the right amount of wear to increase its appeal and not diminish its value. "Ivoire Teinté" traces its technique to the early photography and chemical salts which darkens with the sunlight. -H. 2 ½" x 2", O.L. 35 ¼" \$1,600-\$2,200

46. Buttock Erotic British Cane

Ca. 1882-Erotic ivory ball knob handle with delicate undercuts and incredible miniature detail, snakewood shaft, London hallmarked silver collar and brass ferrule. A one-of-a-kind erotic which has that touch of eccentricity that never goes amiss. See web catalogue for details. -H. D. 2 ¼", O.L. 37 ½" \$5,000-\$7,000

45.



46.



47. Ivory & Ebony Black Boy Cane
 19th Century-A great character carving of a Black Boy with a chubby face marked by a joyful character accented by inset sparkling glass eyes and ivory teeth. The ebony head with an ivory turban comes on a shaved blackthorn branch with a metal ferrule. This cane strikes all the notes a collector's soul loves and its charm speaks for a French Origin.-H. 3 ¼" x 1 ¼", O.L. 35 ¾"
\$1,800-\$2,500



47.

48. Erotic Twin Tailed Siren French Cane
 Ca. 1870-Very large L-shaped carved ivory handle of a nude twin tailed siren exposing her pulchritude, malacca shaft with a bound leather collar and a brass ferrule. This is a very fine example of French erotic micro carving and personalized with engraved initials "DR".-H. 8 ½" x 4 ½", O.L. 36"
\$2,500-\$3,500



48.

49. Erotic Ganymede Ivory Cane
 17th Century.-Allegorical ivory handle of mythological Greek inspiration carved to depict a woman riding a fabulous animal in a suggestive erotic posture and thought to represent moral corruption, lechery and overindulgence. Similar handles in major museums have been regarded as French or Dutch and unanimously dated to 17th Century. This handle comes on a rosewood shaft with a metal ferrule and a silver collar engraved one side with "F and W" initials and on the other a "19" and (19)"12. The later attests for the new shaft fitting and shows that the handle was already a collectable long time before.-For similar handles see C. Dike La Canne Objet D'Art, page 125, Chapitre 10, Planche 13 and Ulrich Klever, Spazierstöcke, pages 78 and 79.-H. 3 ¾" x 2", O.L. 34"
\$1,500-\$2,000



49.

50. Carved Ivory Erotic Cane

Ca. 1890-Very unique carved ivory handle with delicate fine detail, silver collar with engraved initials and London hallmarks, stepped partridge shaft with a brass ferrule.

H. 2" x 2", O.L. 36 3/4"

\$2,000-\$3,000

50.



51. Dual Purpose Ornate Compound Cane

Ca. 1880.-Singular hand chased gilt metal mushroom knob embellished with cold enamel and what seems to be turquoise and garnet cabochons. The hinged top flips open to show a tiny mirror above the powder container. The knob retained all its original sparkle, comes on an ebony shaft and a horn ferrule and its appearance speaks for French parentage.

H. 2" x 1 3/4", O.L. 36 1/2"

\$700-\$900

52.



52. Large Ivory Rabbit Cane

Ca. 1925-A finely carved elephant ivory rabbit, glass eyes, small silver collar, thick mahogany shaft and a bi-metal ferrule (one eye replaced)

H. 5" x 2", O.L. 37"

\$1,600-\$1,800



51.

53. Asian Ivory Ape Cane

Ca. 1890-A finely carved Ape looking into a hollow tree trunk, signed cartouche, detailed gold filled collar, exotic wood shaft and a bi-metal ferrule-H. 4 1/2" x 1 1/2", O.L. 37"

\$800-\$1,200

53.



54. Asian Ivory Monkey Cane
 Ca. 1890-A Japanese carved ivory handle with three mice, leaves and grapes, superb carving, signed sterling collar, exotic wood shaft and a metal ferrule (museum quality).
 H. 4" x 1 1/4", O.L. 36"
\$1,000-\$1,200



54.



55. European Ivory Classical Cane
 Ca. 1880-A quality elephant ivory carving of a standing Mercury, ornate silver collar, rich mahogany shaft and a metal ferrule.
 H. 5" x 2 1/4", O.L. 37"
\$1,200-\$1,800



55.



56. Ivory Dog Cane
 Ca. 1890-An ivory handle with a dog holding a basket of fruit, two color glass eyes, gold filled presentation collar, ebony shaft and a metal ferrule (old repair to handle).
 H. 4" x 5", O.L. 35"
\$500-\$600



56.

57. Ivory and Silver Dress Cane
 Ca. 1900-A carved ivory handle with a silver elk attached, silver end cap, signed sterling collar, exotic wood shaft and a horn ferrule.
 H. 4" x 1 1/4", O.L. 35"
\$350-\$450



57.

58. Ivory Horse Racing Cane
 Ca. 1875-An unusual carved handle with stained branches and a gentleman riding a horse, ornate signed sterling collar, mahogany shaft and a metal ferrule.
 H. 4 1/2" x 3", O.L. 37"
\$600-\$900



58.

59. Ivory Bear Cane

Ca. 1885-A small but detailed carved ivory handle, horn collar, small hardwood shaft and a copper bullet ferrule-H. 2 1/2" x 7/8", O.L. 36"
\$400-\$600

59.



60. German Military Ivory Cane

Ca. 1900-A carved cameo portrait of a gentleman wearing an iron cross, ivory collar, lignum vitae shaft and an iron ferrule.
H. 1 3/4" x 1 1/2", O.L. 34 1/2"
\$400-\$600

60.



61. Art Deco Ivory Dress Cane

Ca. 1925-A carved ivory handle with an unmarked gold collar, oval ebony shaft and a horn ferrule, original felt case-H. 1 1/2" x 1 1/4", O.L. 35 1/2"
\$200-\$300

62. Large Ivory Dress Cane

Ca. 1890-An ivory L shaped handle, inscribed gold filled collar, thick ebonized shaft and a 2 3/4" metal ferrule-H. 3 7/8" x 4", O.L. 35 3/4"
\$300-\$500

62.



61.



63. Art Deco Horn Cane

Ca. 1920-A carved whippet with two color glass eyes, ornate silver metal collar with attached horse and jockey's cap, tiger maple shaft and a brass ferrule-H. 4" x 1 3/8", O.L. 33"
\$350-\$550

63.



64. Horn Hound Cane

Ca. 1860-A carved hound which could possibly be compressed rhino, ornate copper collar, hardwood shaft and an iron ferrule-H. 3" x 2 3/4", O.L. 33 1/2" \$500-\$700



64.

65. Bone Fertility Cane

Ca. 1930-A carved bone handle with an erotic carving of a fertility style figure, brass collar, hard vine shaft and a metal ferrule-H. 2 1/4" x 4 1/2", O.L. 37" \$350-\$450



65.

66. Large Ivory Dress Cane

Ca. 1880-A carved elephant ivory handle with multiple rings, silver metal collar, exotic wood shaft and a 2 1/2" metal ferrule-H. 1 3/4" x 3", O.L. 36" \$400-\$600



67.

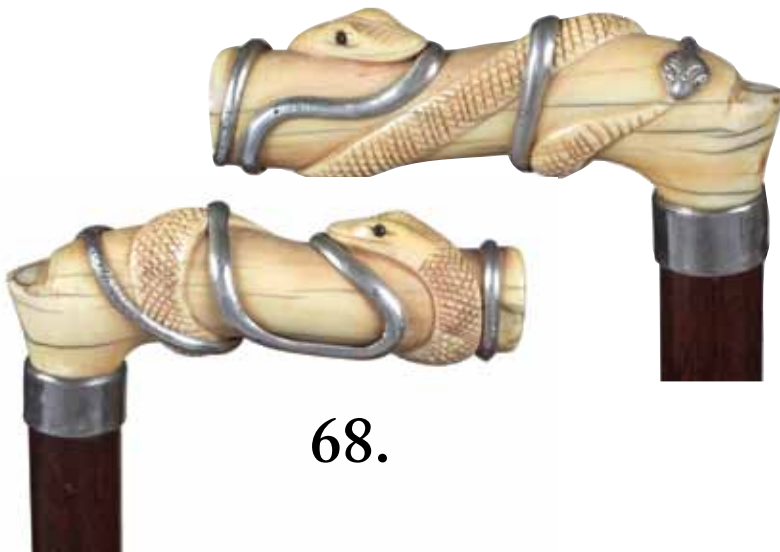
67. Erotic Ivory Cane

Ca. 1890-Carved ivory handle with female erotic symbolism, ribbed silver metal collar, oak shaft and a metal ferrule-H. 3" x 1 3/4", O.L. 32 1/2" \$500-\$600



68. Sterling and Ivory Snake Cane

Ca. 1900-A carved ivory snake with beaded eyes, handle wrapped with a silver snake, collar is hallmarked R.C.M. and an anchor, cherry shaft and a metal ferrule-H. 4 1/2" x 1 1/4", O.L. 36" \$500-\$700



68.



66.

69. George Jensen Silver Cane
 Ca. 1900-A prime example of this Danish silversmith, signed handle, bamboo shaft and a brass ferrule-H. 5/8" x 1 7/8", O.L. 33 1/4"
\$250-\$350



71.



70. Cigar Lighter Horn Cane
 Ca. 1925-Carved horn handle which detaches from the collar to expose a working cigar lighter, brass collar with unreadable touch marks, bamboo shaft and a metal ferrule-H. 4 1/4" x 1 1/4", O.L. 35 1/2"
\$450-\$550

69.



71. Horn Whistle Cane
 Ca. 1885-A working handsome cab cane, probably American buffalo, white metal collar, rain spot Malacca shaft and a brass ferrule-H. 4 3/4" x 2 1/2", O.L. 36"
\$350-\$450

70.



72. Horn Dress Cane
 Ca. 1900-Probably compressed rhino, small ivory collar, exotic wood shaft and a wood ferrule. H. 4" x 4", O.L. 37"
\$400-\$600

72.



73. Mythological Silver Cane
 Ca. 1880-An erotic silver handle with Leda and the Swan atop in high relief, Europa with two ladies approaching, and another classical scene, hallmarked but unreadable high relief handle, honey Malacca shaft and a horn ferrule. H. 1 1/4" x 2 1/2", O.L. 34 3/4"
\$500-\$700

73.



74. Balkrishna Silver Cane
 Ca. 1870-An ornate high relief casting of a complete Indian village with trees and a person, thick Malacca shaft with four silver dots and a 3" brass ferrule.
 H. 2 1/2" x 1 3/4", O.L. 34 1/2"
\$400-\$600



74.

75. Japanese Mixed Metal Cane
 Ca. 1890-A superb example of silver and gold work in this style of handle, various birds, flowers and lilies throughout, faux bamboo malacca shaft and a bi-metal ferrule-H. 3 1/2" x 1 1/4", O.L. 35"
\$1,200-\$1,500



76.

76. African American Bisque Cane
 Ca. 1910-A hand painted porcelain bisque handle with minimum wear, exotic hardwood shaft and a metal ferrule-H. 1 1/4" x 3", O.L. 34"
\$350-\$450



77. Art Nouveau Sterling Cane
 Ca. 1895-An Austrian sterling handle with unreadable hallmarks, snakewood shaft and a copper ferrule (minor dings in handle).
 H. 4" x 2 1/2", O.L. 34"
\$300-\$400

75.



77.



78. Folk-Art Cane

Dated 1861-A presentation Folk Cane from "Mike to his friend", birds, scissors, fish, guns and various other carvings, some paint still visible, minor missing small pieces of wood in initials, heavy wear to the initials A.M.W., various stars and small carvings throughout, varnished black handle, original finish and a copper ring ferrule. O.L. 33 1/4"

\$2,500-\$3,000



78.



79. Thomas Jefferson Folk Cane

Ca. 1890-A top of the line example of a Thomas Craddock Thomas Jefferson Cane with multiple animals and carvings, Masonic symbol, original finish and no ferrule-O.L. 35 1/2"

\$1,000-\$1,500

80. Oak Cane Case

Ca. 1885- A golden oak curved front golden oak front opening cane case, original finish, stepped cane supports in bottom, original glass. Holds 72 canes.

W. 37"x D. 24"x H. 50"

\$1,500-\$2,500

79.



80.



81. Telescope System Cane

Ca. 1850-A 3 draw brass telescope which is inscribed "R & J Beck London", telescope has been recondition with all lenses now working and full leather covering, original end cap, scenic wave patent collar, nautical woven collar, pair of original brass eyelets, an original brass bullet ferrule-
Telescope 17 ¼"

H. 8 ½" x 1 ¾", O.L. 34 ½"

\$2,500-\$3,000



82. Gilded Age Rhino and Gold Can

This early 19th Century cane has an interesting provenance and to best way to convey it is from the seller himself." My grandmother came from an aristocratic Mexican family from Merida in the Yucatan. Her mother was English and her father was a wealthy rancher who had a plantation where they cultivated henequen. This period was the gilded age of Yucatecan society when 10 -15 families controlled the region and lived lavishly in mansions and lorded it over the Maya Indian population who worked in their houses and on their plantations. The gold knob has the Regil family coat of arms etched upon it and finds its origin in Regil, the Basque country of Spain. My branch of the family immigrated to Mexico in the early 18th century and married into the local aristocracy. Members of my family claim descendance from the original conquistador of the Yucatan, Francisco Montejo. I received this stick from my grandmother Beatriz de Regil in the 1970's whose hacienda "Uayalceh" still exist." O.L.-32"

\$4,000-\$5,000



83. Asian Ivory Dress Cane

Ca. 1890-A carved ivory handle with a two large birds, an ape and a rat, beaded glass eyes, early twigspur shaft and a horn ferrule

H. 4" x 1 5/8", O.L. 35"

\$700-\$1,000



84.

84. Ivory and Silver Dress Cane

Ca.1900-An ivory and silver presentation handle from the university club in New York, thick exotic wood shaft and an ivory ferrule-H. 5" x 2 1/8", O.L. 35 3/4"

\$400-\$600



85. Ivory Bird and Child Cane

Ca. 1885-A rare and most unique handle of a large bird carved with great detail carrying a young child in its beak, precisely cast silver metal feet upon an ivory ball handle, exotic wood shaft and an ivory ferrule.

H. 4 1/4" x 2", O.L. 35 1/4"

\$2,200-\$2,600

85.



86.

86. Ornate Ivory Victorian Cane

Ca. 1870-A high relief carving done in the Victorian taste, ivory ring collar, mahogany shaft and an ivory ferrule-H. 5" x 1 3/4", O.L. 36"

\$1,000-\$1,200

87. Ivory and Gold Dress Cane

Ca. 1880-A carved ivory handle with gold filled end cap, gold filled ornate collar, ebony shaft and an ivory ferrule-H. 5 3/4" x 1 1/4", O.L. 35 1/2"

\$400-\$600



87.



83.



88. Nautical Dress Cane

Ca. 1885-A whale's tooth handle with a baleen disc atop, baleen spacer, small ivory collar, exotic wood shaft and a bone ferrule-H. 1 1/2" x 1 5/8", O.L. 33"
\$400-\$500



88.



89. Nautical Ivory Dress Cane

Ca. 1890-A whale's tooth handle, pewter collar, shark vertebra shaft and a metal ferrule-H. 1 1/2" x 1 1/2", O.L. 34 1/2"
\$400-\$600

90.

90. Horn and Ivory Sword Cane

Ca. 1870-An unusual horn handle with various ivory decor attached, silver medallion is inlaid to a tortoise disc attached to ivory thumb rest, ivory twigspurs on lower handle, 4 sided 11 1/2" blade, ivory push button locking mechanism, exotic wood shaft and a horn ferrule-H. 3 1/2" x 4 1/2", O.L. 35 1/2"
\$1,000-\$1,500



91. Toledo Sword Cane

Ca. 1885-An unusual Toledo twist lock sword cane in working condition with a 26" signed Toledo blade, ornate silver handle atop, twigspur horn shaft handle, two small silver collars, honey malacca shaft and a 2" horn ferrule
H. 4 1/2" x 1 3/4", O.L. 34"
\$1,200-\$1,400



91.



89.



92. Full Ivory Carved Cane

Ca. 1890-A wonderful 3D carving of a man and woman atop, segmented ivory shaft and never had a ferrule.

H. 3" x 1 1/4", O.L. 35 1/4"

\$1,500-\$2,000



92.

93. Gold and Ivory Dress Cane

Ca. 1885-A gold filled presentation handle, large ivory collar with a carved hand and rose, exotic wood shaft and a metal ferrule-H. 4 3/4" x 1 1/8", O.L. 36"

\$500-\$600

93.



94. Ivory Skull Cane

Ca. 1900-A carved ivory skull handle with an ornate silver end cap, silver collar, exotic wood shaft and an ivory ferrule-H. 4 1/4" x 1 1/4", O.L. 36"

\$400-\$600



94.

95. Large Tiffany Nast Eagle

Ca.1900- A large example of the Nast Tiffany eagle in fine condition, signed "Tiffany and Co. Sterling", ornate thistle collar, detachable handle, malacca shaft, and a horn ferrule.

H. 4" x 2 1/2 ". O.L.- 33 1/2"

\$3,500-\$4,500



95.



96. Tortoise and Sterling Dress Cane
 Ca.1925- A unique compressed tortoise handle with seven attached silver animals including a bird, dog, bear, rabbit, boar, fox and mouse, silver collar, exotic wood shaft, and a horn ferrule.
 H.- 11 3/4" x 1 1/4". O.L.-39"
\$2,200-\$2,600

98.



97. Ivory Boar and Hound Cane
 20th Century- A massive carved ivory handle which is contemporary to the large bamboo stepped shaft, thick silver metal collar, 2.5" brass ferrule.
 H.-2 1/4" x 2 1/4" x 4". O.L.-38"
\$2,500-\$3,500

98. Ivory Boar Hunting Cane
 20th Century- Carved ivory handle with various dogs attacking a wild boar, carved throughout the entire handle, silver collar, 1 1/4" 19th Century malacca shaft, and a 3" horn ferrule. H.-4" x 1 3/4". O.L.-35"
\$1,400-\$1,800



96.

99. Memento Mori Lady and Owl Cane
 20th Century- An elephant ivory carved handle with a ladies face with flowing hair, a skull, and a full length view of an owl, large signed sterling fluted collar, 19th century malacca shaft, and a horn ferrule. H.-2"x 3 1/2". O.L.- 37"
\$1,600-\$1,800

97.

99.



100. Pharaonic Ivory Cane

Ca. 1910-Ivory Pharaoh on a longer knobbed stem with ebony dot inlay on an ebony shaft with a horn ferrule. Anglo-Egyptian cane from the revival period. H. 6 3/4" x 1 1/4", O.L. 37 1/4" \$700-\$900



100.

101. Ivory Hunting Cane

19th Century-Vertical ivory handle carved with a pack of hounds hunting stags, elks and boars, reeded top and beaded framing. Rosewood shaft with silver collar and a brass ferrule. H. 4 1/2" x 1 1/4", O.L. 37" \$1,000-\$1,600



101.

102. Imposing Lion Cane

19th Century-Substantial ivory handle with a well chased and gilt collar on a makassar ebony shaft with a metal ferrule. Good portrait with inset glass eyes. -H. 4 1/2" x 2 1/4", O.L. 37 1/2" \$1,500-\$2,200



102.

103. Meissen Porcelain Cane

Early 1900s-Straight white porcelain handle decorated in cobalt blue with the classic, "Zwiebelmuster" onion pattern, ebony shaft with a gilt collar and a brass ferrule. This German handle is authenticated with the two crossed swords. -H 3" x 1/2", O.L. 36 1/4" \$400-\$600



103.

104. Ivory Dog Cane

19th Century-Carved elephant ivory massive handle, malacca shaft with a metal ferrule and silver collar with rubbed hallmarks and engraved "H.Gerling Hildesheim". The canine head with cut ears and wide open mouth with sharp teeth is enlivened by two large and inset glass eyes.
H. 2 ¼" x 2 ¼", O.L. 35 ¾"
\$1,000-\$1,600

105. Lapis Lazuli Dress Cane

Early 20th Century.-Lapis lazuli ball knob of a natural pale blue color with gold dust, gilt collar, ebony shaft and a horn ferrule.-H. 1 ¾" x 1 ¾", O.L. 38"
\$500-\$700

106. Ivory Cat Violin Player

C. 1890-Larger ivory violin maestro cat, upright standing and dressed with a tail coat and vest. The feline holds the instrument in its left front paw and the bow with the right one and shows on the back a long tail coming out from the coat's slit. The handle is on a well-dressed malacca shaft with a silver collar and brass ferrule.
H. 4 ¾" x 1 ¾", O.L. 36 ½"
\$3,000-\$4,000

107. Rabbit Head Ivory Cane

Ca. 1890-Well carved rabbit head with two large eyes and a pair of upwards extending, prominent ears marked by a long and bushy fur. Malacca shaft with a long staghorn ferrule. Birmingham hallmarks 1892.
H. 3 ¼" x 2 ¼", O.L. 34 ¼"
\$1,200-\$1,600



104.

107.

106.

105.

108. Silver Knob Kerrie Cane

Ca. 1890-Well modeled heavy silver casting of a running hare, pepper bamboo shaft and a brass ferrule. The heavy weight and pointed tip makes it a redoubtable defense weapon.

H. 2 3/4" x 2 1/2", O.L. 36 1/4"

\$700-\$900

108.



110.



109. Ivory Dogs Cane

Ca. 1890-L-Shaped hippopotamus ivory handle with rounded edges carved with two dog heads, fruitwood shaft with a white metal collar and a brass ferrule.-H. 3 3/4" x 2", O.L. 35 1/2"

\$800-\$1,000



110. Silver and Coquilla Nut Nobleman's Cane

18th Century-Straight silver handle hand chased in an elaborate Baroque taste and topped by a plain turned coquilla nut knob, on a malacca shaft with a bone ferrule.-H. x 1 1/2", O.L. 35"

\$1,000-\$1,500

111. Ivory Wildlife Cane

19th Century-Large ivory handle with two boar heads against one another embellished with an arrangement of oak leaves and acorns. The handle with a strong and naturalistic carving comes on a malacca shaft with a long ivory ferrule. Loaded with the special appeal of hunting motifs.

H. 4 1/2" x 2 1/4", O.L. 34 1/2"

\$1,800-\$2,600



109.



111.

112. Silver Nobleman's Cane

18th Century-Silver pommel knob finely hand chased and engraved in the Louis XVI style, malacca shaft with eyelets and a 6" tall metal ferule. The cane is loaded with the great feel of age every collector loves and its profile speaks for French parentage.-H. 2" x 1", O.L. 39 1/2" \$1,000-\$1,500



112.

113. Ivory Turf Cane

19th Century-Vertical ivory handle with two horse heads, rosewood shaft and a brass ferrule. First rate Turf allegory. H. 4 1/2" x 2", O.L. 35" \$1,200-\$1,800



113.

114. Silver Nobleman's Cane

18th Century.-Large and elongated Baroque silver pommel knob delicately modeled, cast, finely hand chased and engraved with foliate scrolls, shells and other motifs including a peacock. The round top is engraved with the initials "TC" while the collar is struck with a series of hallmarks which hint to a German origin. Malacca shaft and a metal ferrule. H. 3 1/2" x 1 1/2", O.L. 33 3/4" \$1,000-\$1,500



114.

115. Japanese Export Ivory Cane

Meiji Period-Beautiful and long ivory handle with two monkeys, ebony shaft and an ivory ferrule. The character of the primates, which seem fighting for a fruit in the hand of the larger animal, and their relatively angry and defensive facial expressions are magnificently rendered and speak for a talented artist. H. 6 3/4" x 3/4", O.L. 36 1/2" \$1,600-\$2,200

115.



116. Folk Art Cane

Ca. 1850-Fashioned of a single bough with a natural bough carved with two different Pan heads topped by a clown portrait with frilled collar and bonnet. 4 3/4" long iron ferrule. Perhaps French. H. 6" x 6", O.L. 39 3/4" \$1,000-\$1,500



116.

117. Massive Ivory Fist

Ca. 1870-Carved ivory clenched fist with clearly outlined fingers and apparent veins vertically depicted on a frilled and buttoned cuff. Ebony shaft with a metal collar and matching ferrule. H. 3 3/4" x 1 1/2", O.L. 35" \$1,800-\$2,500



117.

118. Cloisonné Enamel Cane

Ca. 1890-Shippo enamel handle with a long and tapering stem topped by a round and widening, flat knob. The knob is decorated with a golden yellow dragon which coils on the stem to end with a colored large head on the knob. Ebony shaft and a horn ferrule. H. 5 3/4" x 2" O.L. 35 3/4" \$800-\$1,200



118.

119. Memento Mori Ivory Cane

19th Century-Opera shaped ivory handle throughout carved with human and animal skulls as well as skeleton bones, lizards and snakes. Malacca shaft with a metal collar and a staghorn ferrule. Russian .O.L. 38 1/4" \$3,000-\$4,000



119.

120. Toledo Dress Cane

Spain, Ca. 1885-A remarkable Toledo steel knob with dense 24 karat yellow gold and silver wire Damascene work with arabesque and trellises within multiple frames, ebony shaft and a horn ferrule. The quality work speaks for the Zoluagas workshop from Eibar, and in mint Condition.

H. 3 1/2" x 1 1/2", O.L. 37 1/2"

\$800-\$1,000



123.



121. Japanese Export Ivory Cane

Meiji Period.-A large and nice ivory knob carved in high relief with four rats and an owl, well figured feather coat for the owl and fur for the rats, and, all the eyes with dark inlay. Rosewood shaft and a horn ferrule.

H. 3 3/4" x 1 1/2", O.L. 39"

\$1,500-\$2,000

121.



122. Hard Stone Dress Cane

Ca. 1900-A sizeable blue stone knob of the lapis lazuli family fashioned in a sizeable and elongated Milord shape. Luxurious and trendy, this cane draws its elegance from its noble design and color combination.

H. 3" x 1", O.L. 36 3/4 in.

\$700-\$900

122.



123. Hippo Ivory Horse Head Cane

Ca. 1880-Large Hippo ivory Opera shaped handle with a curving hand rest and widening tips carved on one side with a powerful horse head, ebony shaft with a plain silver collar and a horn ferrule.

H. 5 1/4" x 1 1/2", O.L. 36 1/2"

\$900-\$1,200

124. Live Oak Dress Cane

Ca. 1910-A one piece Live Oak cane with a crook handle decorated with a large real horn stallion's head and a matching horn ferrule. The well-bred animal with pinned ears, two inset glass eyes, a long snout with blown nostrils has an open muzzle with red tongue.-H. 5" x 5", Cap 3 1/4" x 2 1/2", O.L. 36 1/2" \$800-\$1,200

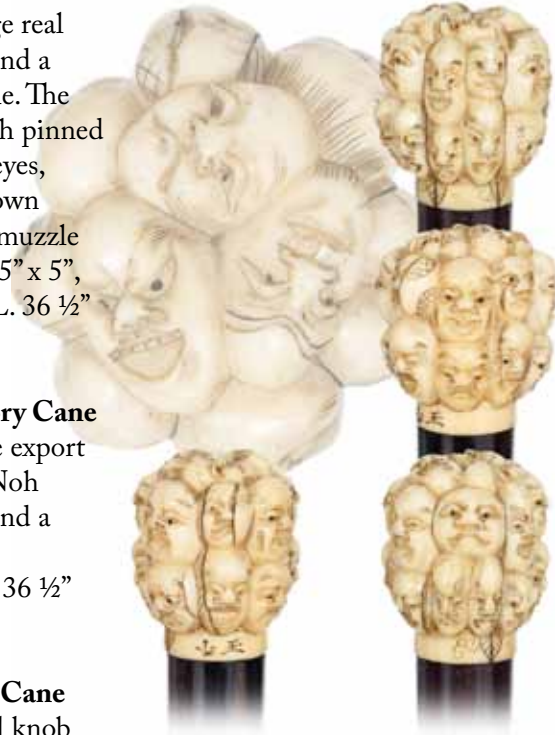


124.

125.

125. Noh Masks Ivory Cane

Ca. 1890-A Japanese export ivory knob with 20 Noh Masks, ebony shaft and a brass ferrule. H. 1 1/2" x 1 1/4", O.L. 36 1/2" \$800-\$1,200



126. Mullah Parade Cane

Ca. 1850-Substantial knob and shaft entirely covered with dense metal and ivory micro mosaics building geometrical Oriental patterns. Made by an artisan with a religious fervor for beauty and perfection, it draws direct inspiration of the golden age of Islamic arts, is probably Persian. H. 3 1/2" x 2", O.L. 36 1/4" \$800-\$1,000



126.

127.

127. Ivory Dog Cane

19th Century.-Larger Boxer head with upright ears, extending lower jaw, large nose with open nostrils and prominent, inset, dark glass eyes. Ebony shaft with two gilt ring collars and a metal ferrule. French. H. 2 1/4" x 3 1/4", O.L. 37" \$1,200-\$1,800



128. Viennese Dress Cane

Ca. 1910-A substantial hardstone knob which seems to be a boulder opal in an elongated, plain and fluting shape with a round top, gilt collar, a rosewood shaft and a horn ferrule. Decorative, fiery and layered structure.

H 3" x 1 1/4", O.L. 39 1/4"

\$600-\$800

129. Ivory Dachshund Cane

19th Century.-Ivory Sunday golfer carved with a dachshund front part on one side and his back part on the other to give the impression that the canine goes through the handle. Ebony shaft with an ivory ferrule.

H. 3 1/4" x 1 3/4", O.L. 35 3/4"

\$800-\$1,200

130. Mascot Dress Cane

Early 1900s-Jade ball knob in a white metal, possibly silver cage made with three dragons and topped by the Imperial guardian lion Shishi, rosewood shaft and a horn ferrule.

H. 3 1/2" x 1 3/4", O.L. 39"

\$500-\$700

131. Immortal Mascot Cane

Ca. 1890-Sunstantial Japanese ivory portrait of Fukurokuju (from Japanese "fuku" happiness, "roku" wealth, and "ju" longevity) ebony shaft with a silver collar and an ivory ferrule. Original, dark stain to handle. Good-Luck cane directly related to the Far Eastern mythological heritage and well rendered in the Meiji Style.

H. 5 1/2" x 1 1/4", O.L. 37 3/4"

\$700-\$1,000



130.



128.

131.



129.

132. Viennese Dress Cane

Dated 12. 24. 1900-Well balanced Derby silver handle with long stem hand chased and engraved in the rich Baroque taste on a rosewood shaft with a horn ferrule. One-of-a-kind individual cane with a full set of hallmarks and personalized with the initials "HS".

H. 4" x 3 1/4", O.L. 36 1/4"

\$700-\$900

133. American Centennial Cane

Ca. 1876-Large L-shaped ivory handle carved at the front with a loosely depiction of the First American Flag. Elaborate ivory collar with the initials "MD" and a malacca shaft with a metal ferrule. In addition, it has the right provenance, having belonged to Carl Schurz (March 2, 1829 – May 14, 1906) the German revolutionary, American statesman and reformer, and Union Army General in the American Civil War.-H. 5 3/4" x 4 1/4", O.L. 32"

\$1,000-\$1,600

134. Ivory Duck Head Cane

Ca. 1880-Ivory handle naturalistically carved as a duck head with a long and wide beak and a well figured and polychrome feather coat with two large and inset glass eyes. Ebony shaft with a silver collar and a horn ferrule. Typical for Brigg- London as published in their catalog and praised by age.-H. 2 1/2" x 1 1/2", O.L. 35 1/2"

\$1,400-\$1,800

135. Wine Related Folk Art Cane

Ca. 1900-Large hardwood oval loop handle carved with wine leaves and grapes highlighted with a greenish color, oak shaft with a white metal collar and worn out ferrule. Traditional French cane worn mainly in the wine harvest feasts and parades.-H. 8" x 4 1/4", O.L. 37 1/2"

\$700-\$1,000

134.



133.



135.



132.



136. Ivory Turtles Cane

19th Century-Ivory knob carved with a large turtle and four turtle babies, malacca shaft and missing ferrule.

H. 2" x 32 3/4", O.L. 34 1/2"

\$1,200-\$1,800

137. Toledo Dress Cane

Ca. 1900-One of a matching pair for "Her". A remarkable Derby steel handle with 24 gold inlay in the Egyptian Revival taste, Spain, hardwood shaft and a metal ferrule.

H. 4 1/2" x 2", O.L. 35 1/2"

\$700-\$900

138. Toledo Dress Cane

Ca. 1900-One of a matching pair for "Him". A remarkable Opera steel handle with long stem and 24 gold inlay in the Egyptian Revival taste, Spain, hardwood shaft and worn out ferrule.-H. 6" x 4", O.L. 36"

\$700-\$900

139. Ivory Dogs Cane

19th Century-Large ivory handle carved with five bulldog heads beside one another. The trademark "sourmug" expression on their faces is well rendered, and the depiction side by side with the front one fletching his under bite as if he was watching the herd is a subtle hint for the gregarious attribute of the breed. Malacca shaft with a metal ferrule and well chased a silver collar with the engraved initials "VT".-H. 4 3/4" x 1 1/4", O.L. 33 1/4"

\$1,400-\$1,800



136.



138.

139.

137.



140. Parade Cane

19th Century-All deep black ebony cane with a modified Opera handle with front silver cap engraved "Denso" on a substantial one piece shaft with fretted micro carving from top to bottom and with a white metal ferrule. Traditional Singhalese art in a high end quality.-H. 4 1/2" x 2", O.L. 37"

\$700-\$900

140.



141. Ivory Wild Animals Cane

19th Century-Straight ivory handle carved in low relief with an elephant and a tiger, turned ivory collar, ebony shaft and an ivory ferrule. Fine example of Far-Eastern skill from the Meiji period and accurately designed and executed in the traditional Japanese love for the detail perfection. Excellent age patina.

H. 7 1/4" x 3/4", O.L. 36 1/2"

\$900-\$1,200

141.



142. Oriental Parade Cane

20th Century-Ebony cane with a ball knob lavishly embellished with mother of pearl inlay in continuous diamond pattern, gilt brass collar and ferrule. Extremely decorative and unused cane.

H. 1 3/4" x 1 1/2", O.L. 36 3/4"

\$500-\$800

142.



143. Historic Ivory Cane

Ca. 1880-Ivory knob with four Indian lions standing back carved after the Lion capital of the Aśoka pillar at Sarnath, malacca shaft and a staghorn ferrule.

H. 2 3/4" x 1 1/4", O.L. 35"

\$700-\$900

144.

144. Incroyable Hardwood and Ivory Cane

Ca. 1870-Long and slightly tapering turned hardwood handle carved with the portrait of an "Incroyable" and embellished with inset ivory face, Bicorné hat and hands.

This cane exudes the flavor of the French Revolution culture of Paris, survived in excellent condition.- H. 6" x 1 1/4", O.L. 38"

\$600-\$900

143.



145. Hardwood and Ivory Day Cane
 19th Century—A boxwood crook handle with an ivory dog head cap, belt and buckle collar and glass eyes, rosewood shaft. Well used patina and totally worn ferrule.—H. 4 ¾" x 4 ½", O.L. 35"
\$800–\$1,200

146. Ivory Fantasy Hog Cane
 19th Century—A finely carved elephant ivory fantasy visions of a “sausaged” hog in the amusing Dickensian taste. Malacca shaft with an ivory ferrule and a substantial silver collar finely engraved with a long presentation and struck with Birmingham hallmarks 1898. H. 4" x 2", O.L. 32 1/2"
\$800–\$1,200

147. Exotic Bird Day Cane
 Circa 1900—Figural handle fashioned of ivory and lizard skin and embellished with glass eyes, malacca shaft with an ivory ferrule. This French cane is apparently well preserved and endorsed by the suitable antic note. H. 3 x 2 ¼", O.L. 34 ½"
\$700–\$900

148. Ivory Dragon Cane
 19th Century—Long and straight ivory handle carved in low relief with a dragon in the clouds on a snakewood shaft with an ivory ferrule. The fabled animal, with a coiled and scaled reptilian body, mighty paws and strong claws, has the usual large and frightening head with horns and long whiskers and an air puff suggesting a fiery breath. Mother of pearl inlay in the eyes.—H. 8 ¼" x ¾", O.L. 38"
\$1,200–\$1,600

146.



145.



147.

148.



149. Silver Dress Cane

Ca. 1885-Large crook handle with applied floral decoration in the taste of the Wiener Werkstätte (literally Viennese Workshops), ebony shaft and a white metal ferrule. This quality cane with various hallmarks on the handle's collar was used but survived in original condition.-H. 4" x 3 1/2", O.L. 35 3/4"
\$400-\$600

150. Japanese Export Walrus Ivory Cane

Meiji Ca. 1880-A large walrus ivory handle with birds and rats among flowering branches, malacca shaft and a bone ferrule. Obviously used over a longer period and with a great luminosity to the handle and a well-aged and rich patina to the shaft. H. 8 1/2" x 3/4", O.L. 39"
\$800-\$1,200

151. Knights Steel Knob

19th Century-Steel knob modeled with Knight fights on horses depicted in the middle ages taste. The knob with a high relief and dark oxidization is probably Spanish and comes on a pepper bamboo shaft with a metal ferrule. H. 2" x 1", O.L. 33"
\$300-\$500

152. Ivory Duck Head Cane

19th Century-Large ivory handle fashioned as a duck head with a rounded head, downwards extending wide beak and a well figured feather coat with two large eyes. The head is furthermore emphasized by a cuff-like frilled collar above a wider other one with a jeweled central part between two plain turned and framing rings. Wenge wood shaft and a metal ferrule. H. 2 1/4" x 3 1/2", O.L. 38"
\$1,600-\$2,000

151.



152.

150.

149.



153. Tortoiseshell Dress Cane

Ca. 1900-Opera tortoiseshell handle, ebony shaft with a silver collar and ebony shaft with a metal ferrule. The handle shows the valued marbled and well streaked, warm mellow honey colors of tortoiseshell with the magical translucency and discreet shine of the noble marine material. English hallmarks.

H. 3 3/4" x 1 1/2", O.L. 34 3/4"

\$500-\$800

154. Dieppe Ivory Badine

19th Century-Long ivory handle delicately carved in high relief with, what seems to be, an allegory of the summer. One can see wheat spikes, flying birds and flower garlands among other decorative elements on its longer vertical stem and a bunch of wheat spikes on the square-octagonal top. This French handle survived practically intact and comes with a rosewood shaft with an ivory ferrule.

H. 5 3/4" x 1 1/2", O.L. 36 1/2"

\$700-\$900

155. Piqué Dress Cane

20th Century, most likely Egypt-Ball knob on a segmented shaft lavishly embellished with dense silver piqué and twisted gold wire inlay. Extremely decorative, unused cane.

H. 4 1/2" x 2", O.L. 37 1/2"

\$800-\$1,000

156. Mascot Dress Cane

Ca. 1880-Long ivory handle topped by two Imperial guardian lions Shishis, the shaft, ivory collar and an ivory ferrule. While the cane is a superb and intact example of Far-Eastern skill from the Meiji period, the carving is full of life executed in the ancient and traditional Japanese love for the detail perfection.

H. 8" x 1 3/4", O.L. 36 1/4"

\$800-\$1,200



154.



155.



153.



156.

157. Ivory Chrysanthemums Cane

Ca. 1890-Long and straight ivory handle carved in low relief with a flower composition dominated by large chrysanthemum buds and irises, ebony shaft and an ivory ferrule.-H. 8 ½" x ¾", O.L. 39"
\$800-\$1,200



158.



158. Horn Crook Dress Cane

Ca. 1930 – A well kept horn dress cane, ornate gold-filled collar, ebony shaft and a metal ferrule. H.-4 ¼' x 3 ½'. O.L.-37"
\$300-\$400



157.

159. Skull and Bone Cane

20th Century- Hard composition cane made to look like wood and a brass ferrule. O.L.- 36"
\$100-\$200

160. Hand Painted Porcelain Dress Cane

Ca. 1890- A painted portrait cane with fancy gold-filled handle and collar, heavy moriage work, snakewood shaft, and a horn ferrule. H.- 8" x 1 ¾". O.L.- 37"
\$700-\$900



160.

161. Art Deco Dog Cane

Ca. 1930- A signed sterling handle of a dog with two color glass eyes, ivory snout, honey malacca shaft and a horn ferrule. H.-3 ¾" x 2 ½". O.L.-"37"
\$800-\$1000



161.

159.



162. Toledo Sword Cane

Ca. 1895- A 15" signed Toledo blade, push button locking working mechanism, ribbed brass collar, shaved twig spur shaft and handle, and a metal ferrule. Toledo is faint on the blade. H.-5" x 7". O.L.- 35"

\$500-\$800



162.

163. Ivory Patriotic Eagle Cane

20th Century- A large carved ivory handle, signed sterling collar, tiger maple shaft, and an ivory ferrule.

H.-1 3/4" x 3". O.L.- 36"

\$1,600-\$1,800



164.

164. Memento Mori Ivory Cane

20th Century-An ivory carved handle with a gentleman with long side burns and pony tail which is contemporary to the hallmarked British ornate silver collar, honey malacca shaft and a horn ferrule

H. 2" x 2 3/4", O.L. 36"

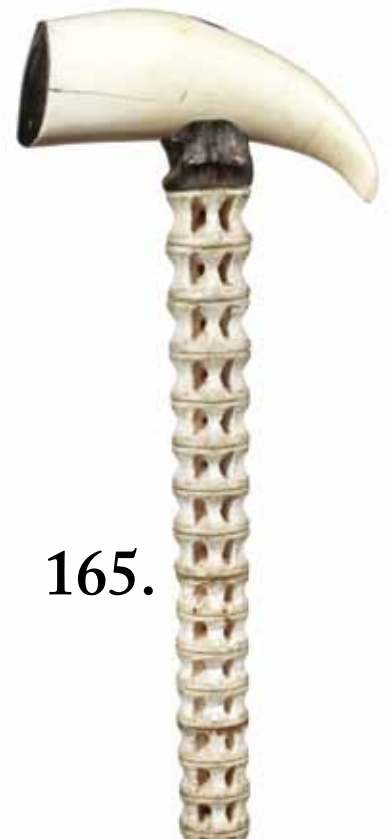
\$1,500-\$2,000



165. Whale's Tooth Cane

20th Century-A large whale's tooth with a horn end cap, large horn collar, shark vertebra shaft and a 4" horn and metal ferrule

H. 6 1/4" x 2 1/2", O.L. 39"



163.



165.

166. Silver Bear Cane

Ca. 1935-A signed but unreadable silver bear marked sterling with red stone glass eyes, faux bamboo exotic wood shaft and a bi-metal ferrule
H. 2 7/8" x 2", O.L. 35 1/2"
\$1,200-\$1,400



166.

167. Tiffany Silver Dress Cane

Ca. 1920-A sterling high relief engraved handle signed "Made for Tiffany & Co. Sterling, 53", exotic wood shaft and a bi-metal ferrule-H. 2 7/8" x 1 1/4", O.L. 36"
\$500-\$700



167.

168. Ivory Frog Dress Cane

20th Century-A unique ivory carving with a frog with horn eyes setting upon a lotus blossom, signed sterling collar, faux bamboo mahogany shaft and a bi-metal ferrule
H. 2 1/2" x 1 5/8", O.L. 37"
\$1,200-\$1,500



168.

169. Crown Stag Dog Cane

Dated 1904-A large antler with a carved setting dog, silver metal collar with presentation, exotic wood shaft and a brass ferrule
H. 10" x 3 1/2", O.L. 37"
\$500-\$700



169.

170. Ivory Golf Caddy Cane

Ca. 1935-A carved ivory handle in caddy attire with two color glass eyes, signed sterling collar, ebony shaft and a bi-metal ferrule.

H. 3 ¼" x 1 ¾", O.L. 36"

\$1,200-\$1,400

171. Mermaid Stag Cane

20th Century-A carved stag handle with a mermaid and dolphins, signed sterling collar, snakewood shaft and an ivory ferrule.

H. 6" x 3", O.L. 37"

\$600-\$800

172. Silver Race Horse Cane

Ca. 1915-A Russian twin race horse silver handle with its proof marks, ebony shaft and metal ferrule-H. 5" x 2 ¼", O.L. 36"

\$900-\$1,200

173. Ivory and Ebony Blackamoor Cane

Ca. 1890-A fine carving with appropriate uses of two materials, ivory carved collar, ebony shaft and an ivory ferrule.

H. 2 ¾" x 3 ½", O.L. 36"

\$1,800-\$2,200

172.



171.



173.



170.



174. Silver Art Nouveau Cane

Ca. 1895-A cast classic Nouveau handle with German hallmarks, raised bamboo shaft, small dings and a metal ferrule.

H. 4 ½" x 2 ½", O.L. 34"

\$300-\$400



174.

175. Souvenir Propeller Cane

Ca. 1935-A unique one piece carving, probably from a propeller and a brass ferrule.

O.L. 34"

\$200-\$300



175.

176. Ivory Dog Cane

Ca. 1930-A carved crutch handle which has a bulldog passing through, signed sterling collar, maple shaft and a horn ferrule.

H. 4 ½" x 4", O.L. 36"

\$500-\$600

176.



177. Pig Ivory Mermaid Cane

20th Century-A very fine contemporary carving by an unknown carver done in wonderful detail, bare breasted carving, red oak shaft and an ivory ferrule.

H. 5 ½" x 3", O.L. 36"

\$1,000-\$1,500



177.

178. Gun and Dagger Cane

Ca. 1895-Carved gorilla handle with an unusual working single shot firearm which appears to be about a 25 cal., barrel is stamped "F.A. DE PEDRO JOSE ALCORZA ELGOIBAR", the barrel also has the number 3, 4 1/2" knife blade which is detachable from the 3" barrel, probably a rim fire, locking mechanism from handle to hollow wooden shaft with minor separations and a metal ferrule.

H. 3" x 13 1/2", O.L. 34 1/2"

\$1,500-\$2,500



179.

178.

179. Spanish Gun Cane

Ca. 1895-A nickel plated handle with the following inscription, "PRIVILEGIO JE INVENCION SISTEMA EGORIA" on one side of the handle and on the other "FA DE VICTOR SARASOQUETA CORTABERRIA V CIA ELBAR ESPANA", most of the previous engravings are unreadable but have been ciphered due to this cane being identical to the next cane in the auction, large unknown cal., and an original removable ferrule-H. 4 1/2" x 1 1/2", O.L. 34 1/2"

\$900-\$1,200



181.

180. Spanish Gun Cane

Ca. 1895-A nickel plated handle with the following inscription, "PRIVILEGIO JE INVENCION SISTEMA EGORIA" on one side of the handle and on the other "FA DE VICTORSARASOQUETA CORTABERRIA V CIA ELBAR ESPANA", most of names are readable, large unknown cal., and no ferrule.

H. 4 1/2" x 1 1/2", O.L. 34 1/2"

\$1,000-\$1,500



180.

181. BARZA BAL Gun Cane

Ca. 1895-A 29 cal. Working all steel cane gun, breech loading shaft and trigger mechanism, nice engraving on handle and no stopper ferrule-H. 4" x 3", O.L. 30"

\$900-\$1,200

182. European Gun Cane

Ca. 1895-A working hammer and trigger mechanism on a steel handle and a steel barrel, appears that the handle is permanently attached to the shaft which would make one think it is a muzzle loader, large cal. And no stopper ferrule.
H. 4" x 3 1/2", O.L. 32"
\$900-\$1,200



183. Horn Dress Cane

Ca. 1910-A nice large horn crook handle, fancy gold filled collar, thick Malacca shaft and a horn ferrule.
H. 5" x 4", O.L. 36"
\$250-\$400



184. Gold Filled Dress Cane

Ca. 1900-A large ornate gold filled handle in fine condition, exotic wood shaft and a metal ferrule.
H. 4 1/2" x 3", O.L. 35"
\$300-\$500



185. Ivory Crook Cane

Ca. 1925-A nicely grained ivory handle, hallmarked gold collar, stepped hardwood shaft and no ferrule-H. 4" x 3 1/2", O.L. 32 1/4"
\$300-\$500



**186. Pair of Gold Filled
Diminutive Canes**
Ca. 1910- O.L.36"
\$150-\$300

187. Six Assorted Canes
\$150-\$300

188. Six Assorted Canes
\$300-\$400

189. Six Assorted Canes
\$200-\$300

190. Native American Apache Cane
Ca. 1980-A full beaded reservation
purchased cane with a coyote jaw
bone and teeth handle, thousands of
beads with various decorations and no
ferrule-H. 5 1/2" x 1 3/4", O.L. 38"
\$500-\$700



187.



188.



190.



189.



186.

191. Carved Country Cane

Ca. 1900-An unusual carved one piece oak country cane with a metal ferrule-O.L. 33 1/2"

\$100-\$200



191.

192. Tiffany Dress Cane

Ca. 1920-A one piece mahogany shaft with a signed "Tiffany & Co. 18kt" gold end cap and a stopper ferrule-H. 4" x 3", O.L. 34"

\$350-\$450



193.

193. Bronze Elephant Cane

Ca.1925-A cast bronze elephant with a rich patina, ornate gold filled collar, mahogany shaft and a horn ferrule-H. 2" x 2", O.L. 35 1/2"

\$300-\$400



194. Pair of Sterling Canes

Ca. 1915-Both have English hallmarks, exotic wood shafts and one with ferrule-Largest H. 3 1/2" x 3", O.L.'s 36"

\$300-\$400



192.

195. Pair of Ivory Canes

Ca. 1890-One being a whale's tooth with eyelets, twigspur shaft and a metal ferrule, and the other ivory handle, ornate collar, partridge wood shaft and an ivory ferrule-largest is 2" x 1 3/4"-O.L.'s 35"

\$300-\$450



194.



195.

196. RIGIKULM Mountain Hiking Stick

Ca. 1925-A horn and hoof goat hiking stick with original hair, fruitwood shaft and a pike hiking ferrule.

H. 5 1/4" x 2 3/4", O.L. 35"

\$200-\$350



197.

196.

197. Ivory Crook Handle

Ca. 1925-An interesting treatment of ivory and German silver, silver metal collar, hardwood shaft and a horn ferrule-H. 3 1/2" x 2 3/4", O.L. 35 1/2"

\$300-\$450

198. Physician's Surgical Cane

20th Century-A unique system cane with a wooden handle, brass collar which contains a glass syringe, five bone surgical instruments held in the oak shaft and a brass ferrule, handle has a brass regimental medical medallion atop as does the long brass collar.

H. 9" x 2", O.L. 37"

\$500-\$800



198.

199. Conductor's System Cane

Dated 1888-A unique band leader's cane which holds a 14 3/4" conductor's wand with a presentation in the shaft, silver removable top, ebonized shaft and a brass ferrule-H 1 1/8" x 1 1/2", O.L. 29 3/4"

\$500-\$800



199.

200. Coin Purse Cane

Ca. 1890-A spring loaded handle with a bronze lady and sheep atop, hardwood shaft and a horn ferrule.
H. 1 1/4" x 2", O.L. 35"
\$250-\$350

201. Cigarette Holder Cane

Ca. 1930-A carved ivory container handle which has a two color cheroot holder, rich mahogany shaft and an ivory ferrule-H. 1 1/4" x 4 1/4", O.L. 35"
\$400-\$600

202. Skull and Frog Dress Cane

Ca. 1930-A whimsical carved bone skull with a working jaw, detailed bullfrog atop, horn collar, exotic wood shaft and a horn ferrule.
H. 2" x 2", O.L. 35"
\$400-\$700

203. Ivory Lion Cane

Ca. 1915-A carved ivory setting lion with two color glass eyes done in realistic detail, signed "Lyon Maker solid silver", honey Malacca shaft and a horn ferrule-H. 4" x 2 1/4", O.L. 35 1/2"
\$800-\$1,200

201.



200.



202.



203.



204. Ivory Young Elephant Cane

Ca. 1925-A finely carved young elephant with two color glass eyes on an ivory training ball, white metal collar, hardwood shaft and a metal ferrule-H. 3 1/4" x 1 5/8", O.L. 35"
\$700-\$1,000

204.



205. Early Sword Cane

Ca. 1880-A 19 1/2" 4-sided and grooved blade, working locking mechanism, a pair of coin silver collars, Malacca handle and shaft and a metal ferrule.
H. 5 1/2" x 8", O.L. 36"
\$600-\$900

205.



206. English Scale System Cane

Ca. 1900-A malacca scale cane which measures up to 8 lb on it's 8" Salter scale, woven wire collar, "London O.L. Style" cartouche, malacca handle/shaft and a horn ferrule-H. 6" x 8", O.L. 36 1/2"
\$500-\$600

206.



207. Porcelain Dress Cane

Ca. 1910-A heavy gold decorated cobalt blue porcelain handle, gold metal collar, mahogany shaft and a horn ferrule-H.D. 1 1/2", O.L. 35 1/2"
\$300-\$450

207.



208. Bulldog Country Cane

Ca. 1885-A one piece carved briar cane with a nicely carved bulldog with two color glass eyes, mixed metal collar and muzzle and a horn ferrule.

H. 4" x 1 1/2", O.L. 33 3/4"

\$350-\$500



209. Tortoise and Ivory Asian Cane

Ca. 1890-A fluted tortoise handle with a carved ivory mortal atop, thick honey Malacca shaft and a horn ferrule.

H. 1 1/2" x 2 1/4", O.L. 36"

\$400-\$600



210. Two Ivory Canes

Ca. 1900-A pair of two ivory dress canes, both with ferrules, average length 35"

\$250-\$350

211. Toledo Sword Cane

Ca. 1910-A worn Malacca sword cane with a New York gold filled presentation band, working locking mechanism, a near mint condition 29" signed Toledo blade and a metal ferrule.

H. 5" x 6 1/2", O.L. 35 1/2"

\$500-\$700



211.



212. Asian Sword Cane

Ca. 1900-A carved bone handle with a bamboo upper handle and shaft, 10" 4 sided blade with various plant engravings and a bone ferrule-H. 1" x 5 1/4", O.L. 35"
\$400-\$600

213. Silver Snake Dress Cane

Dated 1916-A high relief cast British handle with Chester Hallmarks, thick Malacca shaft and a metal ferrule-H. 1 1/2" x 3 1/4", O.L. 34"
\$350-\$500

214. Ivory and Gold Dress Cane

Ca. 1925-An elephant ivory handle with two 9 kt gold spacers, hallmarked E.N., marked .375 gold collar, ebony shaft and a horn ferrule-H. 1" x 2", O.L. 36"
\$350-\$500

215. Three Various Canes

\$100-\$200

216. Telescope System Cane

20th Century-A 4 draw brass telescope with locking lense cover in working condition, exotic wood shaft and a stopper ferrule, telescope is 16 1/2"-H. 6" x 2", O.L. 36"
\$150-\$300

213.



214.



212.

216.



215.



217. Whale's Tooth Nautical Cane

Ca 1890-A scrimshawed whale's tooth with the date 1821, ship hero, presented to Captain Pendleton", horn and ivory spacers, hardwood shaft with abalone inlay, copper eyelets and a bone/ baleen ferrule. Scrimshaw work maybe contemporary to cane. H. 4" x 1 1/4", O.L. 36"
\$1,000-\$1,500

217.



218. Nautical Scrimshaw Cane

19th Century-A whimsical bird which is made from a whale's tooth, inlaid ivory heart with the initials J.F., exotic wood shaft and no ferrule. H. 4" x 1 1/4", O.L. 35"
\$1,000-\$1,500



218.

219. Last Rights Priest Cane

Ca. 1900-A communion cane which handle has three compartments which are labeled, OS-SC-OI, thick ebonized shaft and a brass handle. H. 2 1/4" x 1", O.L. 36 3/4"
\$400-\$600



220. Egyptian Inlaid Cane

Ca. 1960-A fine example of this often seen subject matter with hundreds of pieces of pique work, bone collar, rich ebony shaft and a horn ferrule.
H. 4" x 3", O.L. 38"
\$200-\$300

220.



219.



221. Ivory and Silver Art Deco Cane

Ca. 1920-Wonderful ivory and silver handle with Art Deco silver decorations, sterling end cap and collar, exotic wood shaft and an ivory ferrule-H. 4 ½" x 1 ¼", O.L. 34 ½"

\$200-\$300

222. Art Nouveau Silver Dress

Circa 1900-A signed German .800 silver handle, partridge wood shaft and a metal ferrule-H. 3" x 4 ¾", O.L. 37" (small dent on end cap)

\$200-\$300

223. Indonesian Dagger Cane

Ca. 1930-A carved dragon head handle which has a 6 ¼" two sided blade, tropical wood shaft and no ferrule-H. 1 ¼" x 5", O.L. 34 ½"

\$200-\$250

224. Art Nouveau Silver Dress Cane

Ca. 1890- A fine silver handle with minor dints and dings, signed coin .800, ebonized shaft and a metal ferrule. H. 4 ¼" x 3 ½", O.L. 32", used but not abused.

\$200-\$300



225. Royal Hussars Officers Cane

Ca. 1930 -A system stick which has a compass atop and a four draw brass telescope in the shaft, the scope extends to 15" and has a chip on one of its lenses, the large brass handle is 7" long, massive bamboo shaft and no ferrule. O.L. 39 3/4"

\$500-\$700

226. Defensive Weapon Cane

Ca. 1900-A bell bronze heavy casting of a one-eyed soldier, thick pine shaft and a large brass ferrule-H. 3 1/4" x 2 1/4", O.L. 32 1/2"

\$200-\$300

227. Horn Bird Cane

Ca. 1890-A carved stylized bird with two colored eyes, silver collar, segmented ornate horn disc and tube shaft, Cromwell's oral legend also goes with this cane and an iron ferrule-H. 4 1/4" x 1", O.L. 34"

\$300-\$500

228. Erotic Ivory Balance Toy

20th Century -A Punch and Judy erotic ivory balance toy with Punch having moveable arms, on the end of the balance is a carving of a basket of fruits, great details is given both front and rear on the figures,three pieces. Nice erotic piece. H.-11.5" W. 9"

\$3,000-\$4,500



225. 226.



227.





Kimball M. Sterling, Inc. (TFL-1915)
125 West Market Street
Johnson City, Tennessee 37601
kimballsterling @ earthlink.net
423.928.1471

Photography by James Price

Catalog Design by KT Design, LLC
www.kristaft.com

Member National Auctioneers Association
© Copyright 2012 Kimball M. Sterling, Inc.