

www.auctionauction.com

Kimball & Victoria Sterling  
present a

# Winter Antique Cane Auction



Sunday  
February 13<sup>th</sup>  
1:00 p.m. EST

Preview - Saturday, February 12th  
1:00 p.m. - 5:00 p.m. EST  
Sunday, February 13th  
11:00 a.m. EST  
or by appointment anytime before the auction

# TERMS & CONDITIONS

1. Cash or check. A 15% buyers' premium will be added to the hammer price as part of the sale price for in-house, phone, and absentee bidders. We reserved the right to hold purchases until the buyers checks clears if buyer is not known by us. Bank letter of credit is acceptable. A 20% buyers fee will be charged to internet bidders.

2. Mail or phone bids are accepted; the firm may require a deposit.

3. Kimball M. Sterling, Inc. has endeavored to catalog and describe the property correctly. All property is sold as is and neither the auction company nor the consignor will be responsible for descriptions, genuineness, provenance or condition of the property. No statement in the catalog made orally at the sale or otherwise shall be deemed to be a warranty, representation, or an assumption of liability.

4. In the event of any dispute between bidders, the auctioneer shall have total discretion to determine the successful bidder, in which his determination shall be final or to re-offer and resale the article in dispute. Title of the item or items purchased by the bidder will pass at the fall of the gavel and declaration of bidder. This is not an approval auction. All measurements are approximate.

5. Principal auctioneer: Kimball M. Sterling #2467.  
B. Elizabeth Sterling, auctioneer # 5757. Firm Kimball M Sterling Inc. TFL-1915

6. Bidders may bid live on the Internet by visiting <http://www.auctionauction.com> You may also view the auction at this site and bid by phone.

7. Communications:  
Telephone 423-928-1471.  
Fax 423-928-2816.  
Cellular 423-773-4073, 423-773-4072.  
Email [kimballsterling@earthlink.net](mailto:kimballsterling@earthlink.net)

8. Worldwide shipping available. International sales which are protected by C.I.T.E.S. permits can also be arranged. Estimated bidders cost per cane is \$255.00 for permits and inspections plus the shipping cost. A permit may also be required by your country. Buyers pay for shipping, packing and insurance from United states Postal Service.

9. Kimball M. Sterling, Inc. will not be held responsible for bids received on the day of the auction, unexecuted absentee bids, phone bidders not contacted or slow Internet bids. Although we do attempt to get all bids executed problems do occur. There will be no recourse from the bidder. We will not be responsible for items left on our location for over 30 days.

10. Sale will be conducted at 125 West Market Street, Johnson City, Tennessee. 37604. Announcements day of the sale take precedence over pre-sale advertising. Any litigation that pertains to this auction will be conducted in the county of Washington in Tennessee and is agreed upon by registering for this auction.

11. Airport is the Tri-Cities Airport, which is approximately 20 miles from the gallery. Internet catalog and live bidding available at [www.auctionauction.com](http://www.auctionauction.com) Best Western Hotel: 423-282-2126. A very fine hotel which offers Sterling Auction a discount rate is the Carnegie Hotel 1216 W State of Franklin Rd, (423) 979-6400.

12. Please call for condition report on sale lots or email us. We do send out multiple photos by email of any lot in the auction. By registering for this auction you accept the terms and give Kimball M. Sterling auctions the right to charge your credit card on file for purchases and shipping, which you have entered on your registration.

13. Parking service is free.



www.auctionauction.com

Kimball M. Sterling Auction Gallery  
125 West Market Street  
Johnson City, Tennessee 37604  
kimballsterling @ earthlink.net  
423.928.1471

*Two Time Winner of Best  
of Show from the  
National Auctioneers  
Association*

Kimball & Victoria Sterling  
present a

# Winter Antique Cane Auction



Sunday  
February 13<sup>th</sup>  
1:00 p.m. EST

Preview - Saturday, February 12<sup>th</sup>  
1:00 p.m. - 5:00 p.m. EST  
Sunday, February 13<sup>th</sup>  
11:00 a.m. EST  
or by appointment anytime before the auction

Live on the internet at  
**LIVEAUCTIONEERS.COM**

### 1. Ivory Dog Cane

Late 19th Century-Carved elephant ivory head with two color glass eyes, silver metal collar, ebony shaft and a bi-metal ferrule-H. 2 x 2 ½"; O.L. 36"  
**\$600-\$800**



### 2. Erotic Wood and Ivory Cane

Late 19th Century-A finely carved wooden lady with a carved face and a hidden ivory, nude lower torso. When the top of the ladies dress is slid down, a nude carving is exposed which has some original red paint and attached hair. The entire handle is carved front and back, white metal collar, stepped malacca shaft and a copper ferrule. Please see website for more photos.-H. 6" x 1 ½"; O.L. 38"  
**\$2,500-\$3,500**



### 3. Silver Mythological Erotic Cane

Ca. 1885-This mildly erotic cane has a casting of Leda and the Swan atop, and high relief castings on the sides of cherubs, draped ladies and bulls. It has unreadable hallmarks, malacca shaft and a horn ferrule-H. 2 ¼" x 1 ½"; O.L. 34 ½"  
**\$800-\$1,200**



3.





**4. Ivory Portrait Cane**

Ca. 1875-Carved elephant ivory lady in scarf, signed sterling collar, oak shaft and a brass ferrule-H. 5" x 1 1/16", O.L. 34 1/2"

**\$600-\$800**



**5. Leda and the Swan Horn Dress Cane**

Ca. 1890-A very well known subject matter but carved in a not so common honey brown horn. The handle is carved throughout and done very skillfully, unsigned sterling collar, oak shaft and a horn ferrule-H. 4" x 2", O.L. 36"

**\$1,200-\$1,500**



**6. Asian Ivory Dragon Cane**

Ca. 1890-A very high relief carved ivory dragon handle, rich snakewood shaft and a brass ferrule-H. 4" x 1 1/16", O.L. 34 1/2"

**\$600-\$800**



**7. Carved Ivory Dog Cane**

Early 20th Century-A begging ivory dog with glass eyes which appears to be of the poodle family, small ivory collar, exotic snakewood shaft and a bi-metal ferrule-H. 2 3/4" x 1 1/4", O.L. 34"

**\$700-\$900**



7.

### 8. Ivory Deer Dress Cane

Late 19th Century-A carved ivory handle with a stag in antlers and a large hunting horn, India inked on the rear of the handle "S.B. Eshelman"; small ivory collar, exotic wood shaft and a bi-metal ferrule-H. 5 1/2" x 2 1/4", O.L. 38"  
**\$400-\$500**



### 9. Carved Ivory Roman Soldier Cane

Ca. 1875-A wonderful carved portrait cane with a soldier in full helmet and rear plume, ornate brass collar, rich malacca shaft and a bone ferrule-H. 4 1/2" x 2", O.L. 35 1/4"  
**\$800-\$1,200**



### 10. Asian Antler Cane

Ca. 1890-The stag handle is carved deeply with various depictions of Asian life, nice bamboo shaft and a bi-metal ferrule-H. 4 3/4" x 1 1/4", O.L. 36"  
**\$300-\$500**



9.



### 11. Ivory Lion Cane

Ca. 1875-A full figured lion with two color glass eyes, ornate gold filled collar, exotic wood shaft and a bi-metal ferrule-H. 4 1/2" x 1 1/4", O.L. 34 1/2"  
**\$400-\$600**



### 12. Carved Ivory Deer Cane

Late 19th Century-A nicely carved ivory handle, ornate gold filled collar, rich Malacca shaft and a two piece metal ferrule-H. 3 1/2" x 3 1/4", O.L. 33 1/4"  
**\$300-\$500**



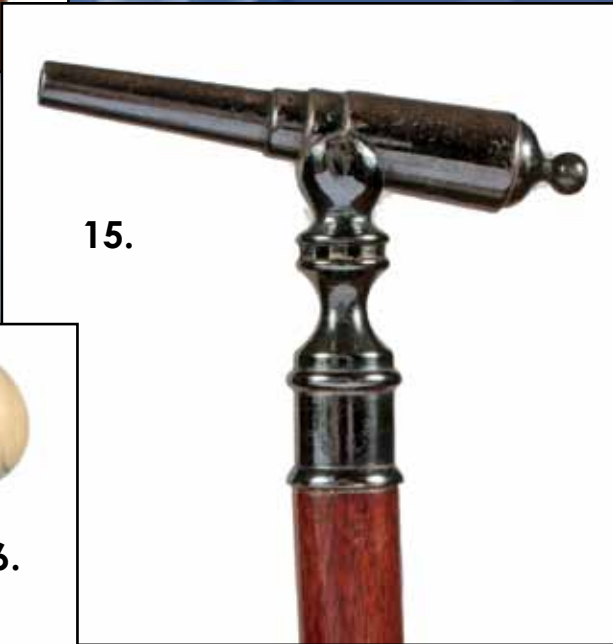
### 13. Ivory Dog Dress Cane

Late 19th Century-Carved ivory dog with two color glass eyes, early ebony shaft and a small brass ferrule-H. 2 1/2" x 2", O.L. 34 1/2"  
**\$300-\$500**





14.



15.



16.



17.



**14. Tiger Eye Dress Cane**

Early 20th Century-A very nice example of this mineral, ornate gold-filled crown collar, natural wood shaft and a metal ferrule-H. 1 1/2" x 1 1/2", O.L. 33"

**\$400-\$500**

**15. Cheroot System Cane**

Late 19th Century  
A prime example of this genre with a near perfect gunmetal finish, "load it and fire it, its o.k.," rich mahogany shaft and a matching stepped gunmetal ferrule-H. 4" x 2 3/4", O.L. 36"

**\$800-\$1,200**

**16. Ivory Sword Cane**

Ca. 1875-A stylized ivory pistol grip, a push and lock mechanism, 19 1/2", 4-sided blade, white metal collar, bamboo shaft and an ivory ferrule-H. 2 1/4" x 2 3/4", O.L. 35 1/2"

**\$700-\$900**

**17. Damascene Dress Cane**

Late 19th Century-A very nice example of this type of work with various dragons and foliage, original ebony shaft and a white metal collar-H. 3 1/2" x 3 1/2", O.L. 36 1/2"

**\$600-\$800**

**18. Asian Bone Container Cane**

Early 20th Century-A carved handle with dragons and flowers which has a carved lotus top which can be unscrewed to place things into the center of the cane, exotic wood shaft and a white metal ferrule-H. 4 1/2" x 1", O.L. 37"

**\$300-\$500**



18.

**19. Holuska Watch Cane**

Ca. 1895-A fine example of this genre of system stick which has all of its original hallmarks and is also signed sterling, original watch and setting stem, rich Malacca shaft and a 2" horn ferrule. The winding mechanism is turning but the cane is going to need some tweaking to operate correctly-H. 1 1/2" x 2", O.L. 35"

**\$1,200-\$1,500**

**20. Toledo Sword Cane**

Ca. 1890-A beautiful honey horn handle, unsigned silver collar, faux bamboo hardwood shaft, signed "Toledo" 27" blade with blood grooves in near mint condition and a bi-metal ferrule-H. 4" x 3", O.L. 36"

**\$800-\$1,200**

**21. Nautical Whalebone and Ivory Cane**

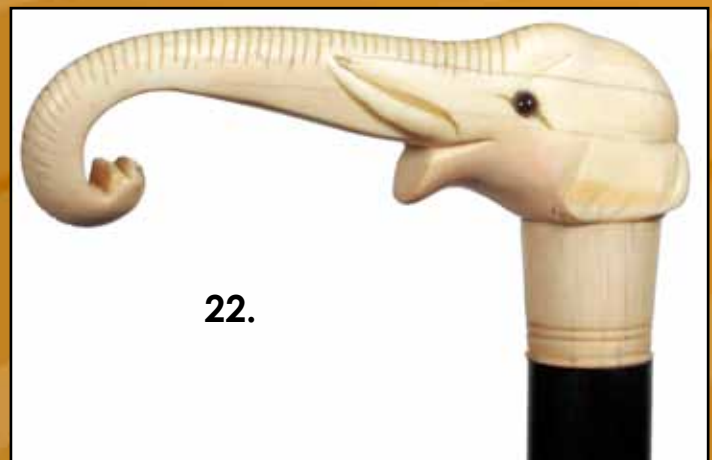
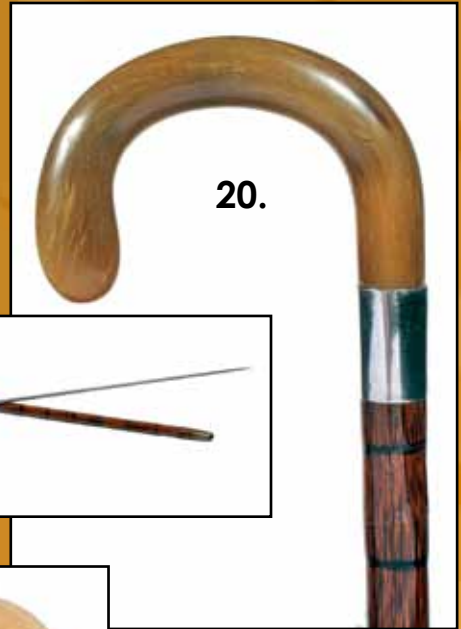
Ca. 1870-An unusual under carved handle which is probably a tooth, a whalebone shaft of which 5% is carved near the top in a hexagonal design and no ferrule-H. 1 1/2" x 2 1/2", D. of shaft 7/8", O.L. 32"

**\$1,500-\$2,000**

**22. Ivory Elephant Dress Cane**

Ca. 1900-A dandy carved elephant with glass eyes, rich mahogany shaft and an ivory ferrule-H. 4 1/2" x 2 1/4", O.L. 35 3/4"

**\$700-\$900**







### 23. Tiffany Dress Cane

Late 19th Century-The handle is signed "Tiffany and Co. Makers, Sterling C"; this cane is monogrammed and also has the address of 584 5th Ave. which was the home of Arthur T. Sullivan. Mr. Sullivan was an internationally known textile merchant which supplied all of the fabric to the cadets at West Point, member of the New York Yacht Club and C.E.O. of Sullivan, Vail & Co. The handle unscrews from the very rich and massive malacca shaft and it has a large horn ferrule-H. 4" x 2 1/4"; O.L. 36" **\$1,000-\$2,000**



### 24. Carved Ivory Dog Cane

Early 20th Century-This is about as good as it gets when it comes to a carved ivory dog. It has two color glass eyes, signed sterling collar, exotic wood shaft and a brass ferrule-H. 3" x 2"; O.L. 36" **\$1,000-\$1,500**



### 25. Shibayami Ivory Dress Cane

Late 19th Century-This Japanese cane has a group of nine insects which are masterfully carved and decorated with semi precious gem stones, signed handle with five oriental characters, unsigned fluted silver collar, exotic natural shaft, and a copper and iron ferrule. This piece of art speaks for itself.-H. 1 5/8" x 1 1/2"; O.L. 31 1/2" **\$2,000-\$2,500**

25.



**26. Ivory Gator Cane**

Ca. 1900-A very nicely carved ivory gator with its tail wrapped under the handle, white metal collar, exotic wood shaft and a metal ferrule-H. 3 1/4" x 1", O.L. 35"  
**\$800-\$1,200**

**27. Ivory Organ Grinder Monkey Cane**

Ca. 1885-A massive carved and smiling monkey, ornate unsigned coin silver collar, 1 1/4" hardwood shaft and a brass ferrule-H. 2 1/2" x 2 1/2", O.L. 36"  
**\$2,000-\$2,500**





28.

**28. Erotic Ivory Ball Cane**

Ca. 1880-This is one of the best carvings that we have seen in this style of erotic hinged ball canes. The two scenes within the sphere are expertly carved with extraordinary facial expressions and body language. Both scenes have carved drapes and one even has a parrot hanging from the ceiling. The hinge is very good and tight on this example, ornate sphelter collar, early twig spur shaft and an original tacked copper ferrule. A private Ft. Lauderdale collection. More details of this cane can be seen on our website.-H. 2" x 2 1/4", O.L. 34"

**\$12,000-\$16,000**



**29. Erotic Harem Slave Girl Ivory Masterpiece Cane**

Ca. 1875-This cane is truly delightful. It is the finest erotic cane that we have offered both in style and detail. The finely carved nude torso is draped with a full head of hair and drapes, slave bracelets on her wrists and ankles, erotic views of private places from both front and rear, and a very ornate upper ivory collar. The unusual part of the cane is the hinged leaf between her legs, when lifted a compartment opens to reveal an early gold mechanical pencil which is enhanced with turquoise beads and the top appears to be an early uncut natural gemstone. The exotic wood shaft also has a signed 14 kt mid-collar which is finely hand chased and hammered. It has a rich horn ferrule and comes to us from a private Ft. Lauderdale collection where it has been for decades. More details of this cane can be seen on our website.-H. 3" x 2" x 1 1/2"; O.L. 36" **\$20,000-\$25,000**



29.

**36. Art Nouveau Silver Dress**

Early 20th Century- A silver handle with a beautiful; face, flowing hair extending on the hand rest, engraved initials and German 800 hallmark. Stepped malacca shaft. -H. 4" x 2 1/2"; O.L. 35" **\$600-\$800**



36.





30.

**30. Ebony & Ivory Carnival of Venice figural Cane**

Ca. 1890-This carved unusual subject matter is very striking, ebony shaft, gilt collar and a horn ferrule. The ivory head with mask has a padded ebony bust with ivory buttons.-H. 3 1/2" x 1 3/4", O.L. 38 1/2"  
**\$900-\$1,500**



31.



**31. Tiffany Sterling Dress Cane**

Ca. 1900-A removable straight handle, densely etched and engraved, struck Tiffany and Co. Maker's Sterling, ebony shaft and a silver ferrule-H. 4" x 1/2", O.L. 38 3/4"  
**\$800-\$1,200**

**32. American Patriotic Bald Eagle Cane**

19th Century-Ivory bald eagle over the National Shield with three stars, detailed feather coat, snakewood shaft and a long horn ferrule.-H. 3" x 2", O.L. 35 1/2"  
**\$2,000-\$4,000**

**33. French Art Nouveau Dress Cane**

Ca. 1890-Straight, long and tapering silver handle topped by an owl face, ebonized hardwood shaft with metal ferrule-H. 5 1/4" x 1 1/2", O.L. 37 1/2"  
**\$900-\$1,500**



32.



33.



**34. French Art Nouveau**

Ca. 1890- Carved ivory siren figural handle, malacca shaft and horn ferrule. Carved to depict a seductive beauty bathing in reeds. Unusual large size and great age patina-H. 5 1/2" x 3"; OL- 35 1/2"

**\$3,000-\$4,000**



34.

**35. French Art Nouveau Cane**

Ca. 1900-A well carved portrait of a beauty with a smiling face and long, flowing hair. Monogrammed SKD. Wide personalized silver collar and full bark malacca shaft with a metal ferrule. Impressive large size -H. 4 1/2" x 2"; O.L. 39 1/2"

**\$1,800-\$2,800**



35.

**37. French Porcelain Cane**

19th century-Large Baroque porcelain handle with girl head, finely modeled and colored painted. Ebony shaft, silver collar and a horn ferrule. Samson Signature-H. 4" x 3"; O.L. 38 1/2"

**\$1,200-\$1,800**

37.





38.

**38. Paperweight Glass French Cane**

Late 19th Century-A solid glass art laticino and Clichy Rose colored glass knob with integral stem, metal collar, rosewood shaft and a horn ferrule-H. 1 1/2" x 1 3/4"; O.L. 38 1/2  
**\$700-\$1,000**

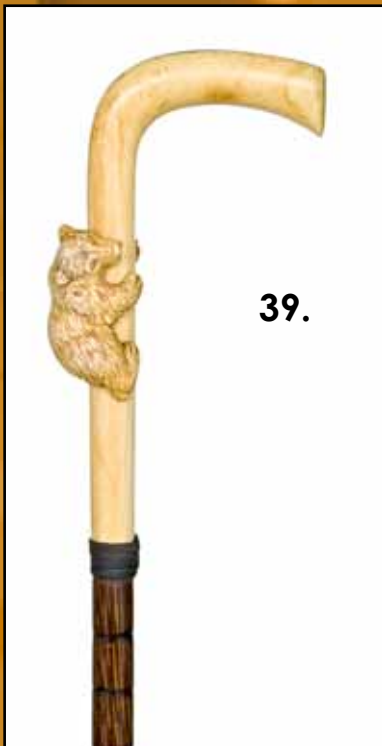


**39. Russian Ivory Bear Cane**

19th Century-L-shape ivory handle with a clamping bear, stepped partridge shaft and a brass ferrule. -H. 6 3/4" x 3"; O.L. 35 1/4"  
**\$1,500-\$2,000**

**40. English Figural Ivory Cane**

Ca. 1880-A fine example of the classic humanized monkey head in a substantial size. Well carved, embellished with inset glass eyes, full bark malacca shaft with a horn ferrule. -H. 4" x 2 1/4"; O.L. 37 1/4"  
**\$2,000-\$3,000**



39.

40.



**41. Viennese Day Cane**

Ca. 1890-A figural silver handle depicting a grouse with long beak and ruby cabochon eyes, superb feather coat, matching lemonwood shaft and a horn ferrule. Several obscured hallmarks-H. 3 1/4" x 2 1/4", O.L. 37"

**\$800-\$1,200**

**42. Ivory Dog Cane**

Late 19th Century-A large carved ivory dog head, rosewood shaft, silver collar and staghorn ferrule-H. 4 1/2" x 1 1/2", O.L. 37 1/2"

**\$1,000-\$1,500**

**43. Ivory Pig Cane**

Ca. 1900-Carved ivory prone swine done in a master's hand, malacca shaft and a brass ferrule. -H. 4 1/4" x 2 1/2", O.L. 37"

**\$2,000-\$3,000**

**44. Silver Eagle Cane**

Late 19th century-A well modeled and finely chased silver eagle handle on an ebonized hardwood shaft with a horn ferrule. Obscured hallmarks-H. 4 1/4" x 3 3/4", O.L. 34 3/4"

**\$800-\$1,500**



42.



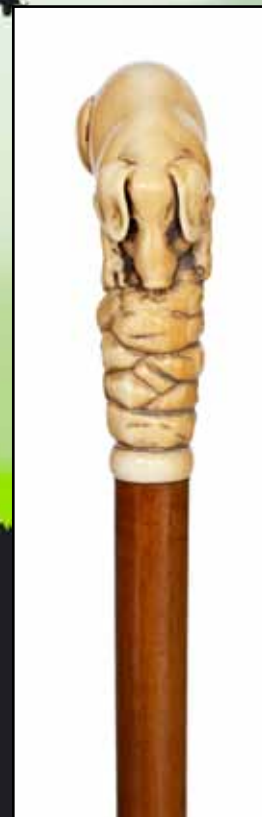
41.



44.



43.







45.

**45. English Ivory Dachshund Cane**  
 Ca.1900-Ivory ball knob carved with eight dachshund under an umbrella, ebony shaft with wide and personalized silver wrap collar with London hallmarks, metal ferrule.-H. 2" x 1 1/2", O.L. 35"  
**\$1,800-\$2,500**

**46. English Ivory Tropical Bird Cane**  
 Late 19th Century-Well carved, large and beautiful head with glass eyes, silver collar, full bark malacca shaft and a 2 1/4" long ivory ferrule.-H. 4 3/4" x 2 1/4", O.L. 35 1/2"  
**\$2,000-\$2,500**

**47. Triple Ivory Dog Cane**  
 19th Century-Large sized Opera shape ivory handle carved with three dog heads and AR initials, malacca shaft, bound leather collar and an ivory ferrule. Fine grained ivory and excellent condition.-H. 4" x 1 3/4", O.L. 36 3/4"  
**\$1,200-\$1,800**

**48. Horn Sword Cane**  
 Late 19th Century-Plain L-shaped dark horn handle with metal collar, thin full bark malacca shaft and a horn ferrule. Finely etched and Toledo signed, 27" long blade with quarter turn lock device. This cane comes from a Mid-West collection. Top condition.-H.3 1/4" x 3", O.L. 33"  
**\$1,200 - \$1,800**



48.



46.



47.

**49. Parade Sword Cane**

Dated 1841-Straight silver handle with floral over an applied silver coin PATRONA BAVARIA, malacca with eyelets and a metal ferrule. The breaking line is disguised under a widening stag rose and the diamond shaped and fluted blade is 13 1/4" long-H. 4 1/4" x 1 1/4"; O.L. 36 3/4"  
**\$800-\$1,000**

49.



**50. German Classic Siren Cane**

Ca. 1880-Silver plated knob made in two unscrewing parts. The top has a hole in its center, and when blown into, one of the perforated disks in the knob turns rapidly to generate the siren sound, which spreads out through the lower filigreed part. The mechanical parts are signed in old Greek letters and in need of adjustment. rosewood shaft, ivory ferrule-H. 2" x 1 1/2"; O.L. 34 1/4"  
**\$600 - \$900**

50.



**51. Staghorn Cork Screw Cane**

Ca. 1890-Natural L-shaped staghorn handle, well-structured rose with silver coin inlay, matching silver collar covering an unscrewing device and a 2 1/2" cork screw. Hardwood shaft and a staghorn ferrule-H. 4 3/4" x 4 1/4"; O.L. 36 1/2"  
**\$400-\$600**

51.



**52. Stepped Malacca Sword Cane**

Ca. 1870-Straight handle with concealed quarter turn lock device, 19 1/2" diamond shaped foil blade, malacca shaft and a metal ferrule.-H. 7 1/2" x 1 1/2"; O.L. 36"  
**\$800-\$1,200**

52.





**53. Bludgeon Cane**

Ca. 1890-Handle heavy cast in white metal horse head, halter and saddle, the flexible shaft made of leather discs piled on a steel core and a brass ferrule-H. 3" x 1 3/4", O.L. 34 1/2"  
**\$400-\$600**

**54. French Scarf Holder  
Feminine Cane**

Early 1900-Swiveling, loop over ivory handle, rosewood shaft and a staghorn ferrule.- H. 4 1/2" x 4", O.L. 36 1/2"  
**\$500-\$800**



**55. European Poet/Authors Cane**

19th Century-Fashioned of a wild cherry branch with two applied cherries to the handle, brass collar and a brass ferrule. Break in three parts to become a pencil and a pen.-H. 5 3/4" x 1 1/2", O.L. 27 3/4"  
**\$400-\$600**

**56. English Hard Stone Dress Cane**

Late 19th Century-Ball handle of the dark, blue shimmering moon stone, gold colored metal collar, ebony shaft and a horn ferrule-H. 1 1/2" x 1 1/2", O.L. 39 3/4"  
**\$300-\$400**



**57. German Wine Grower Cane**

19th Century-An L-shaped ivory handle carved with grapes and vine leaves, naturally structured wild vine shaft with brass collar and an iron ferrule. One-of-a-kind collectable in excellent original condition-H. 4" x 1 1/2", O.L. 32"  
**\$600-\$900**

**58. Advertisement Pencil Cane**

Early 20th Century-Turned bone knob on a dark red painted pencil shaft with a removable metal ferrule covering the Graphite-lead core. The body stamped in silver on one side with a dandy wearing a cane and advertising for the retailer Giggerl Stift and on the other with the manufacturer Johann Froescheis LYRA-Bleistift-Fabrik which was founded in 1806 and still in business in Nürnberg-Germany until today. Rare dual purpose cane and in excellent condition-H. 1" x 1", O.L. 34"

**\$500-\$800**



58.

**59. Rose Quartz Dress Cane**

Early 20th Century- Substantial rose quartz handle with a finely chased silver collar and ebony shaft. German hallmarks-H. 2 3/4" x 1", O.L. 33 1/2"

**\$500-\$800**



59.

**60. English Ivory Erotic Cane**

19th Century-Ivory handle suggestively carved as female organ, malacca shaft with silver collar. London hallmarks. Well aged surface with a minor chip to the handle-H. 3 1/4" x 2", O.L. 35 1/4"

**\$1,000-\$1,500**



60.





62.

**61. English Erotic Cane**

Ca. 1870- An ivory handle on a deep black ebony shaft with chased silver collar and worn out bronze ferrule. The remarkably intricate and vibrant scenes are engraved with incredible fine detail, and one can even see the joyous expressions on the faces of the performing persons. Formerly the property of Roger Peyrefite, the famous French Author as per oral records. See our website for details of this cane -H. 4" x 1 1/2"; O.L. 34 1/2"  
**\$1,500-\$2,500**

**62. Dutch Automated Erotic Cane**

19th Century- A large ivory handle depicting a squatting man taking his morning constitution. He holds in the hands between his legs an eel-like animal that stretches ahead to become his sexual organ when the button on the back is depressed. Ebony shaft with ivory ferrule. Very fine and detailed carving with great character lines to the ivory. See our website for details of this cane -H. 4" x 2 1/4"; O.L. 35"  
**\$10,000 - \$15,000**



61.

**63. Solid Gold French Dress Cane**

Ca. 1880-18 karat yellow gold crook handle with scrolls, ebony shaft with a horn ferrule. Superb quality with some dents at the front around the engraved initials. 18K and OR hallmarks. Estimated weight- two ounces-H. 4" x 3 1/2"; O.L. 36 1/2"  
**\$2,000 - \$3,000**



**64. Fabergé Nephrite And Enamel Cane**

Early 20th Century-Well proportioned and plain Opera Nephrite handle, enamel and silver collar with the Fabergé hallmark beside various Russian marks and an AT workmaster stamp for Alfred Thielemann. Makassar ebony shaft and a horn ferrule.-H. 3 3/4" x 2 1/4", O.L. 37"  
**\$4,000-\$5,000**



**65. Continental Jewelry Cane**

Late 19th Century-A silver and enamel knob handle with a rose quartz cabochon atop, both fine enamel (little damage on one side) and guilloché silver work are seen throughout the entire handle, Austro-Hungarian hallmarks and a maker's mark which probably represent George Adam Scheid, palm wood shaft and a silver ferrule-H. 2 1/2" x 1"; O.L. 36 1/2"  
**\$800-\$1,200**





67.



66.



68.



69.



**66. English Skull Cane**

Ca. 1890-A carved very unusually large staghorn handle, ebony shaft with a silver collar. The skull has a moving lower jaw.-H. 3 1/2" x 3", O.L. 36 1/4"

**\$1,000-\$1,500**

**67. French Dress Cane**

Ca. 1880-A fine engine turned 18 karat gold knob with engraved crest and hallmark on a one piece horn shaft with metal ferrule. The shaft is most likely rhino horn.-H. 1" x 1/2", O.L. 34 1/4"

**\$1,000-\$1,500**

**68. English Ivory Black Man Cane**

Ca.1900-Substantial, well carved head, wide silver collar with obscured hallmarks, full bark Malacca shaft and a horn ferrule. The quality of the original workmanship is underscored by a great condition.-H. 3 1/2" x 2 1/2", O.L. 36 1/2"

**\$2,000-\$3,000**

**69. Memorabilia Franco-Mexican Ivory Cane**

Late 19th Century-Ivory crook handle with the portrait of the Mexican revolutionary leader Emiliano Zapata, makassar ebony shaft, silver collar and a metal ferrule. Well conserved political collectable.-H. 5" x 3 1/2", O.L. 36 1/4"

**\$1,000-\$1,500**

**70. Coquilla Dutch Cane**

Ca. 1790- Figural coquilla nut knob carved to depict a man's head, malacca shaft with three applied metal-woven band collars and a metal ferrule. Well aged surface-H. 2" x 1 3/4", O.L. 38 1/2"

**\$900-\$1,200**



70.

**71. Early German Aristocrats Cane**

Ca. 1780-Straight and unscrewing black horn and ivory container handle with a silver collar and swiveling bar on a malacca shaft with a long horn ferrule. This cane dates back to the period when walking sticks were the privilege of the aristocracy and was probably used for snuff tobacco-H. 5" x 1 1/2", O.L. 35 3/4"

**\$1,200-\$1,800**



71.



72.

**72. Noble Man's Cane**

19th century with later engraved presentation date 1924. Substantial silver pistol grip with applied coat-of-arms, Austro-Hungarian hallmarks, full bark malacca shaft with eyelets and a horn ferrule-H. 3 3/4" x 3", O.L. 35 3/4"

**\$600-\$1,000**



**73. Dresden Porcelain Dress Cane**

Ca. 1880-A wonderful, very large porcelain handle, pink and heavy gold moriage work, three hand painted French Genre courting scenes, metal ring collar, rosewood shaft and a horn ferrule-H. 6 1/4" x 1 1/4", O.L. 39"

**\$1,200-\$1,800**



73.



**74. Fancy Dress Cane**

19th Century, possibly French-L-shaped black horn handle with a well carved ivory medallion showing a horse head facing a dog head, ebony shaft with a horn ferrule-H. 4 1/4" x 3", O.L. 37 3/4"

**\$600-\$900**



74.



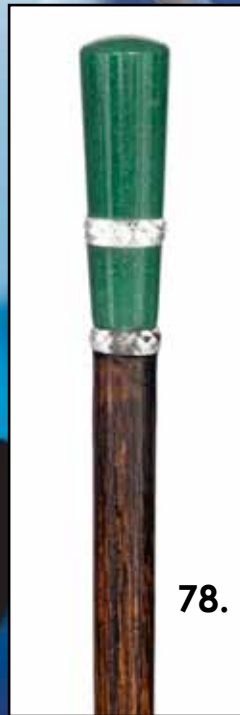




**75. German Silver Day Cane**  
Early 20th Century -A silver crook handle with a horse head, glass eyes, halter, engraved initials AS and an ebony shaft with a metal ferrule. German hallmarks-H. 5" x 4 3/4", O.L. 33 1/4"  
**\$600-\$900**



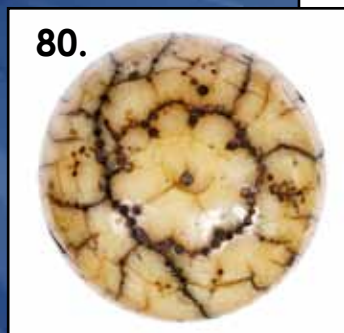
**76. French Lapis Lazuli Dress Cane**  
Early 20th Century-Blue lapis lazuli milord knob of a cloudy natural stone with a silver collar, rosewood shaft and a horn ferrule-H. 2 3/4" x 1", O.L. 37 1/4"  
**\$400-\$700**



**77. European Art Nouveau Dress Cane**  
Early 1900s-Open work silver knob set with a large onyx cameo, ebony shaft with a horn ferrule-H. 2 1/2" x 2", O.L. 35"  
**\$600-\$900**



**78. Hard Stone Dress Cane**  
Ca. 1920-Aventurine quartz handle with two faceted rock crystal washers, Live Oak shaft-H. 3" x 7/8", O.L. 33 1/4"  
**\$500-\$800**



**79. Nymphenburg German Porcelain Dress Cane**  
Late 19th century-The famous Bustelli Harlequin head in white with the reputed Bavarian manufacture seal on the pigtail, rarely seen shaved blackthorn shaft with turned metal collar-H. 3" x 1 1/2", O.L. 36 1/4"  
**\$600-\$900**



**80. Ivory Piqué**  
Ca. 1695-An original early English cane with ivory piqué handle, original malacca shaft with a metal ferrule.-H. 3 3/4" x 1 3/4", O.L. 33"  
**\$1,500-\$2,000**

**81. English Ivory Piqué**

Ca. 1695-An original early English cane with ivory piqué knob and piqué initials INI, malacca shaft with a 3 1/2" metal ferrule. -H. 2" x 1 3/4", O.L. 33 1/2"

**\$1,500-\$2,500**



81.

**82. Early Nobleman's Cane**

Ca. 1740-Featuring a coquille nut and silver knob and a malacca shaft with a long horn ferrule. Fine Baroque art with great feel of age and in original condition-H. 2 3/4" x 1", O.L. 35 1/4"

**\$800-\$1,200**



82.



83.

**83. Boer War Relic Cane**

Late 19th Century-Bone handle, malacca shaft, silver collar and a horn ferrule. Desirable Trophy Cane with historic background-H. 6 3/4" x 3 3/4" Overall length 36"

**\$1,200-\$2,000**

**84. Ivory African American**

19th Century- Ball shaped head with whimsical facial traits, stepped partridge shaft and a metal ferrule. -2" x 2", O.L. 34 1/2"

**\$1,800-\$2,800**



84.



**85. Stag Folk-Art Cane**

Ca. 1890-A stag antler carved with laughing face and long nose out of proportions. Fruitwood shaft and a horn ferrule.-H. 6 1/4" x 5", O.L. 37 1/2"

**\$700-\$900**



85.



88.



87.

**86. American Sardonyx Dress Cane** Ca. 1840-A hard multiple layered stone knob cut in the early taste with domed top and inwards curving, faceted body, metal collar and palm tree wood shaft with a horn ferrule.-H. 1" x 1", O.L. 35 1/4" **\$500-\$700**

**87. English Dress Cane** Ca.1909-A figural silver crook handle depicting a duck, well conserved fine feather coat and glass eyes, coco palm tree wood and a brass ferrule. Engraved on the collar K.J.D. 1910. London Hallmarks H. 4" x 3 3/4", O.L. 36 1/2" **\$800-\$1,200**

**88. German Ivory Ram Cane** 19th Century-Well carved substantial ivory head on oak leaves and acorns, malacca shaft and a brass ferrule. Fine quality and great age patina.-H. 4 3/4" x 2", O.L. 38 1/2" **\$2,000-\$3,000**



89.



86.

**89. Ivory Dog Cane** 19th Century-Carved elephant ivory massive handle, inset glass eyes, rosewood shaft and slender ring collar. -H. 3 1/2" x 2 1/2", O.L. 36 1/4" **\$1,200-\$1,800**

**90. Carved Eagle Head Cane** 19th Century-A naturalistically carved hardwood eagle head with fine feather coat, curving horn beak and two red glass eyes. malacca shaft. chased metal collar and a long horn ferrule.-H. 3 1/4" x 2 3/4", O.L. 35 1/4" **\$600-\$800**



90.

**91. Victorian Lapis Dress Cane**

Late 19th Century-A straight and faceted lapis lazuli handle with gilt collar, well spotted snakewood shaft and a horn ferrule-H. 2 1/2" x 1", O.L. 38 1/2"

**\$500-\$800**



91.

**92. Continental Silver Day Cane**

Ca.1900-Hammered silver knob with a red carnelian, unreadable hallmarks, hardwood shaft and a metal ferrule.-H. 2 1/2" x 1 3/4", O.L. 34"

**\$400-\$600**



92.

**93. Carved Ivory American Dress Cane**

Ca. 1880-An L-shaped ivory handle carved in the Gothic taste and inset with two round, whitish mother-of-pearl cabochons centered by a third oval, grayish one, malacca shaft with gold and silver belt collar and a long ivory ferrule-H. 4 1/4" x 2 1/2", O.L. 31"

**\$800-\$1,200**



93.



94.

**94. Carved Ivory Dress Cane**

Late 19th Century-A crook ivory handle with an adorable dachshund, ebony shaft and silver collar with London hallmarks and a metal ferrule.-H. 3 3/4"x2 1/4", O.L. 35 1/4"

**\$1,000-\$1,500**



95.

**95. Hunting Ivory Dog Cane**

Hallmarked1893-A unique carved handle with a dog chasing a rabbit, silver collar struck with British hallmarks, malacca shaft and a metal ferrule. Right portion of wear to increase the appeal and diminish the value of the cane-H. 4 3/4" x 1 1/2", O.L. 33 3/4"

**\$1,200-\$1,800**



96.



100.



97.



98.

**96. European Ivory Lion's Head**

Mid 19th Century-A finely carved ivory handle with the King of the Jungle, glass eyes, ebony shaft and a white metal ferrule.-H. 3 1/2" x 1 3/4"  
**\$1,200-\$1,800**

**97. French Dress Cane**

Early 20th Century-A black onyx handle with smooth squared top on a tapering plinth with two faceted rock crystal collars, pepperwood shaft with a horn ferrule.-H. 3 1/4" x 2", O.L. 37 1/4"  
**\$600-\$900**

**98. Art Nouveau Dress Cane**

Ca. 1890- A large Opera handle chased with different lilies on each side, rosewood shaft and a horn ferrule. 800 hallmark and wear in keeping with age-H. 4 1/4" x 2 1/2", O.L. 35 1/2"  
**\$500-\$800**

**99. Agate Dress Cane**

Early 20th Century-The polished emerald green ball handle with natural white bands, rosewood shaft, gilt collar and a horn ferrule-H. 1 1/2" x 1 1/2". O.L. 35 1/2"  
**\$400-\$600**

**100. Two Anglo Colonial Trophy Canes**

19th Century-Each fashioned of an Oryx horn with a turned and painted wood handle. Well-aged surfaces-H. 8 3/4" x 1 3/4", O.L. 38 1/2"  
**\$900-\$1,500**

99.



**101. Sèvres Porcelain Dress Cane**

Ca. 1880-Straight porcelain, painted Romantic scene on cobalt blue background with gold moriage work, gilt knob and matching collar, rosewood shaft and an ivory ferrule-H. 7 3/4" x 1", O.L. 36"  
**\$700-\$1,000**

101.



**102. Ivory Kris Dress Cane**

Mid 19th Century-Substantial ivory handle carved with a winged Pegasus between two horses and extensive floral panels, malacca shaft, engraved silver collar and a long staghorn ferrule.-H. 3 1/2" x 2 1/2", O.L. 36"  
**\$800-\$1,200**

102.



**103. Fancy Ivory Figural Cane**

Late 19th Century-A nicely carved boy head with a cap extending in rabbit ears, chased silver collar, large malacca shaft and a long staghorn ferrule.-H. 2" x 4 3/4", O.L. 35"  
**\$1,800-\$2,800**

103.



**104. Victorian Hard Stone Dress Cane**

Late 19th Century-The ball handle being a variety of jade, silver collar, ebony shaft and a horn ferrule.-H. 1 3/4" x 1 3/4", O.L. 36 1/2"  
**\$400-\$700**

104.



**105. Tula Russian Dress Cane**

Ca. 1880-An elegant plain partridge cane with crook handle embellished by a Tula silver cap. Unreadable hallmarks and a metal ferrule-H. 5", Cap 3", O.L. 34 1/4"  
**\$600-\$800**

105.



**106. Viennese Dress Cane**

Late 19th Century-A large Derby shaped and richly ornate silver handle with engraved initials, ebony shaft and a horn ferrule-H. 4 3/4" x 2 3/4", O.L. 37"  
**\$300-\$500**

106.





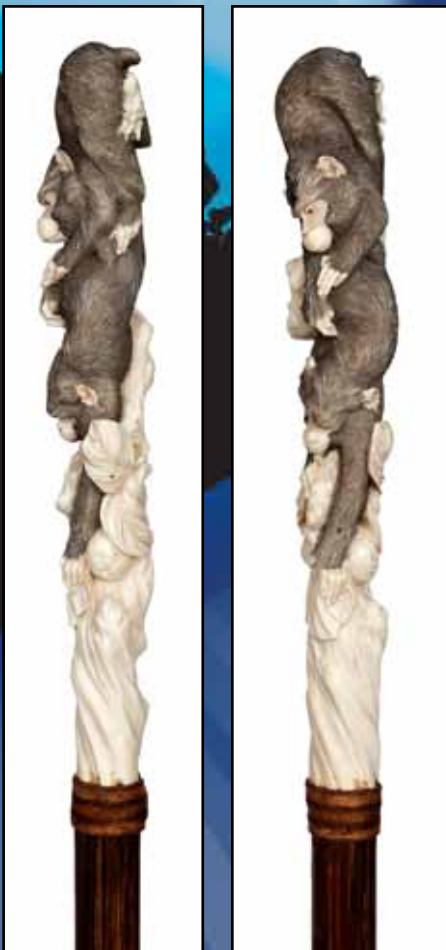
110.



107.



108.



111.



109.

**107. Porcelain Dress Cane**

19th Century-A fine cobalt porcelain egg shaped handle with cavorting angels symbolizing Love, rosewood shaft with gilt collar and a horn ferrule-H. 4 1/2" x 2", O.L. 36" **\$400-\$700**

**108. Sailor made Marine Badine Cane**

Mid. 19th Century-A plain turned whalebone knob on a single piece smooth baleen shaft and a brass ferrule. Very rare and possibly American -H. 1 1/2" x 1/4", O.L. 27" **\$500-\$800**

**109. Nautical Folk Cane**

Mid 19th Century-A carved hardwood shaft topped by a clinched fist, said to have been fashioned of a ship-wheel spoke from a stranded whaler. Great feel of age and dark grown patina-H. 5" x 3 1/4", O.L. 36" **\$500-\$800**

**110. English Ivory Portrait Cane**

Late 19th Century-A well carved head with bearded face, hat, bow tie and pipe, finely chased silver collar with engraved initials and hallmarks, malacca and an ivory ferrule.-H. 3 1/2" x 2 1/4", O.L. 35 1/2" **\$1,800-\$2,800**

**111. Japanese Carved Ivory Cane**

Ca. 1890-A very tall ivory handle with two monkeys picking apples. The carving is done by a master's hand, excessively fine and highlighted with dark stain. Coarse veined Coco Palm tree wood shaft with a long ivory ferrule-H. 5 1/2" x 1", O.L. 38 1/2" **\$1,200-\$1,800**

**112. Parrot Day Cane**

Early 1900-Carved Siam horn and rosewood massive crook handle, glass eyes, ebonized fruitwood shaft, white metal collar and a metal ferrule-H. 5 1/4" x 3 1/2", O.L. 37"

**\$400-\$600**



113.

**113. Naughty Leg Cane**

Ca. 1890-A very heavy silver handle, hardwood shaft and a metal ferrule. Bludgeon cane -H. 4 1/2" x 2", O.L. 37"

**\$700-\$1,000**



114.

**114. Large Ivory Elephant Cane**

Late 19th Century-Very nicely carved elephant head, malacca shaft with a silver collar and a metal ferrule. English and well-aged surface-H. 4" x 2 1/4", O.L. 33 3/4"

**\$1,200-\$1,800**



112.

**115. Texas Horn Cane**

Texas, 19th Century-Fashioned in a hexagonal configuration, emphasized with ivory washers and bold ivory and colored piqué. Matching Opera shaped handle and a metal ferrule-H. 5 1/2" x 2 1/4".

O.L. 35 3/4"

**\$500-\$800**



117.

**116. Continental Amethyst Dress Cane**

Early 20th Century-An amethyst handle with two rock crystal faceted collars, rosewood shaft and a brass ferrule-H. 3" x 1", O.L. 36"

**\$500-\$700**



115.

**117. French Ivory Dress Cane**

Late 19th Century-Substantial ivory pistol grip with roses and a matching ivory collar, finely carved of fine grained, whitish material, malacca and an ivory ferrule- H. 3 1/4" x 2 1/2", O.L. 36 3/4"

**\$600-\$900**



116.



118.



**118. Viennese Agate Dress Cane**

Early 20th Century-A grey agate Milord shaped knob of a cloudy natural structure and subtle color hues with a black onyx collar, well spotted snakewood shaft and a horn ferrule-H. 2 3/4" x 1", O.L. 36 3/4"

**\$500-\$600**



119.

**119. Elegant Viennese Day Cane**

Wienerkunst Werkstätte, shortly after 1900-Silver cap with applied twisted wire, flowers, leaves in the taste of Josef Hoffman, stepped partridge with integral crook handle and a white metal ferrule struck with the twin headed Imperial Eagle above the maker's marks of the famous GUSTAV JACOBI K.U.K. Hoflieferant (purveyors to the Imperial and Royal Court), WIEN, KÄRTNEHRSTR. 39-H. 3" cap & 5" handle, O.L. 36 1/2"

**\$500-\$800**



120.

**120. Handsome French Dress Cane**

Early 1900s-Faceted rock crystal ball knob with enamel collar, ebony shaft with bronze ferrule.-D. 1 1/2", O.L. 36 1/2"

**\$600-\$900**



121.

**121. Sterling And Ivory Dress Cane**

Ca. 1880-A straight ivory carved with two fable animals, cast silver top with scrolls, matching collar and ferrule, fruitwood shaft. -H. 4" x 1 3/4", O.L. 33 3/4"

**\$300-\$500**



122.

**122. Russian Piqué Dress Cane**

Ca. 1880-Straight holy wood cane with hundreds of silver wire and dot inlay, no ferrule. -O.L. 35 1/4"

**\$300-\$500**



123.

**123. Sterling Dress Cane**

Ca. 1890-German Art Nouveau handle, ebonized hardwood shaft and a horn ferrule-H. 4 1/2" x 2 1/2", O.L. 36 1/2"

**\$400-\$600**

**124. Carved Biting Dog Cane**

Early 20th Century-A very nicely carved dog head with folded ears, ivory teeth and two color glass eyes, attached to a flamed maple stem with two ivory collars, on a fruitwood shaft with a horn ferrule-H. 6" x 1 3/4"; O.L. 34 1/2"  
**\$500-\$800**



124.

**125. Amethyst Quartz Cane**

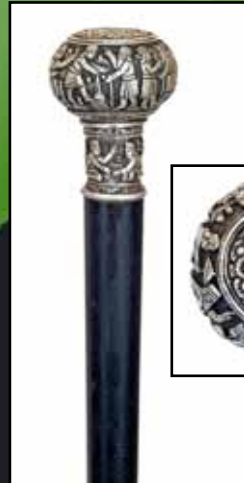
Ca. 1890-A natural stoned ball handle, intense color and good transparency, ebony shaft, a cloisonné enamel collar and a horn ferrule- D-1 3/4", O.L. 38 1/4"  
**\$400-\$700**



125.

**126. Anglo-Persian Silver Cane**

Ca. 1890-A deeply hand chased silver handle, ebony shaft and a horn ferrule-H. 1 3/4" x 2 1/4", O.L. 36"  
**\$200-\$400**



126.



**127. Decorative Dress Cane**

Early 20th Century-Tropical wood cane topped by straight knob with applied horn leaf and berries, rosewood shaft with carved a twist and a horn ferrule.-H. 1 3/4" x 1", O.L. 37"  
**\$200-\$400**



127.

**128. Silver German Dress Cane**

Ca. 1925-A nice Art Deco crook handle, partridge shaft and a metal ferrule. Engraved initials KH. The handle has a hammered surface and an 800 hallmark-H. 4 1/2" x 4 1/2", O.L. 36"  
**\$300-\$500**



128.

**129. Tiger Eye Knob Dress Cane**

Late 19th Century-The ball handle with a brown-gold petrified wood structure, rosewood shaft, white metal collar and a horn ferrule-H. 1 3/4" diameter, O.L. 38"  
**\$400-\$700**



129.



130.



131.



132.



134.

**130. Defensive Blackjack Cane**  
Early 20th Century-A hardwood crook handle cane which pulls apart at its collar and produces a 13 1/2" spring blackjack, gold-filled collar and a bi-metal ferrule-H. 5 1/4" x 6", O.L. 36"  
**\$500-\$700**

**131. Sterling and Lapis Dress Cane**  
Ca. 1920-Ornate silver knob handle, 2 1/2" lapis sleeve, signed sterling collar, ebony shaft and a bi-metal ferrule-H. 4" x 1 1/4", O.L. 35 1/2"  
**\$500-\$1,000**

**132. Nautical Dress Cane**  
Late 19th Century-A carved walrus handle done in the shape of ship eyelets, 3 large baleen spacers, 1" exotic wood shaft and an ivory ferrule-H. 4" x 2", O.L. 36"  
**\$800-\$1,000**

**133. Owl Antler Cane**  
Early 20th Century-Four carved owls with glass eyes, horn end cap and small collar, mahogany shaft and a stag ferrule-H. 4 1/4" x 1 3/4", O.L. 35"  
**\$500-\$600**

**134. Carved Stag Dog Cane**  
Ca. 1875-A finely carved handle with two color glass eyes, inscribed ornate Victorian gold-filled collar, faux bamboo hardwood shaft and a bi-metal ferrule-H. 5 1/2" x 2 1/2", O.L. 35 1/2"  
**\$500-\$700**



133.

**135. M.O.P. Dress Cane**

Ca. 1880-A nice stylized handle with an ornate gold filled end cap and collar, faux bamboo, partridge shaft and a brass ferrule-H. 4 1/4" x 1 1/2", O.L. 36"

**\$400-\$600**

**136. Full Ivory Dress Cane**

Ca. 1890-A finely carved and stylized Art Nouveau full ivory dress cane with a 3" brass ferrule-H. 2" x 2", O.L. 34 1/2"

**\$600-\$900**

**137. Carved Ivory Man**

Ca. 1880-Large unique carving of a man with flowing hair in medieval attire, signed sterling collar, small section of the left foot is missing, ebony shaft and a bi-metal ferrule-H. 4 1/4" x 5 1/2", O.L. 35 1/2"

**\$500-\$600**

**138. Asian Mortal Cane**

Early 20th Century-A carved full figure mortal with a fitted ebony shaft and a horn ferrule-H. 3 1/2" x 1 1/2", O.L. 35 1/2"

**\$400-\$600**

**139. Ivory Lizard Cane**

Ca. 1900-A well carved full figured lizard with some India inking, faux bamboo partridge wood shaft and a horn ferrule-H. 5" x 1 1/4", O.L. 37"

**\$600-\$700**



136.



139.



137.



138.



135.





141.

**140. Penis Trophy Cane**

Early 20th Century-A Cape buffalo, dried penis shaft, elephant ivory spacer, hippo ivory ferrule and a Cape buffalo horn end cap-O.L. 35"  
**\$300-\$500**

**141. Unique Stag Totem Cane**

Early 20th Century-A carved handle with various Indian related images, including wolves, birds, chiefs and many more, signed sterling collar, exotic palm shaft and a bi-metal ferrule-H. 3 3/4" x 1 1/2", O.L. 36"  
**\$800-\$1,200**



140.



142.

**142. Nautical Dress Cane**

Late 19th Century-A hexagonal carved whales tooth with a baleen spacer, rich mahogany shaft, coin silver collar which is hallmarked WN-Anchor B and a bi-metal ferrule-H. 3 1/2" x 1 1/2", O.L. 35"  
**\$1,000-\$1,200**

**143. Ivory Young Lady Cane**

Ca. 1885-A well carved lady in bonnet, small ivory collar, exotic wood shaft and an ivory ferrule-H. 2" x 1 3/8", O.L. 36"-  
**\$400-\$600**



143.

**144. Walrus Dress Cane**

Ca. 1900-A carved walrus ivory walrus, unsigned coin silver beaded collar, ebony shaft and an ivory ferrule-H. 4" x 1 3/4", O.L. 36"  
**\$400-\$600**



144.

**145. Ivory Saloon Leg Cane**

Ca. 1880-Carved leg button boot, fluted signed sterling collar, ebony shaft and a metal ferrule-H. 3 ¼" x 1 ¼", O.L. 34 ½"

**\$400-\$500**



**145.**

**146. Ivory Classical Lady Cane**

Dated 1866-An ornate carved handle, signed and engraved sterling silver collar, ebony shaft and an ivory ferrule-H. 3 ¾" x 1 ½", O.L. 35 ½"

**\$700-\$900**



**146.**



**147. Glass End of Day Cane**

Early 20th Century-A solid patriotic red white and blue parade stick in nice original condition-O.L. 48"

**\$300-\$500**



**147.**

**148. Silver and M.O.P. Dress Cane**

Ca. 1885-A nice art Nouveau handle with lustrous pearl, unsigned, very ornate silver collar, exotic wood shaft and a bi-metal ferrule-H. 3 ½" x 1 ½", O.L. 35"

**\$400-\$600**



**148.**

**149. Silver Dress Cane**

Ca. 1880-An unsigned but tested coin silver handle, ebony shaft and a bi-metal ferrule-H. 7" x 1 ½", O.L. 36"

**\$400-\$500**



**149.**

**150. Carved Wood Dog Cane**

Early 20th Century-Carved dog with ivory eyes, diamond cut ivory ferrule, hardwood shaft and a metal ferrule-H. 4" x 1 ¾", O.L. 35 ½"

**\$400-\$500**



**150.**





151.



152.



153.



155.



154.



**151. Surveyor's Cane**

Late 19th Century-A surveyor's tripod system stick which, when released reaches the height of 4' 6", early brass slide attached telescoping legs with spike ends, brass collar and a removable brass ferrule, handle is hickory and the shaft is steel and brass-H. 6" x 7", O.L. 36 1/2"  
**\$900-\$1,100**

**152. 1933 World's Fair Cane**

A 1933 pewter handle, hardwood shaft and a pencil ferrule-H. 4 1/2" x 4", O.L. 35 1/2"  
**\$200-\$300**

**153. Ivory Dog Cane**

Ca. 1935-A uniquely carved poodle type dog, white metal overlapped collar, hardwood shaft and a bi-metal ferrule-H. 2" x 2 3/4", O.L. 36"  
**\$500-\$700**

**154. Ivory Twisted Branch Cane**

Ca. 1900-Carved ivory handle, gold-filled collar, nice Malacca shaft and a horn ferrule-H. 4 1/4" x 1 1/2", O.L. 34"  
**\$400-\$500**

**155. Walrus Eskimo Ivory Cane**

Early 20th Century-A stylized carved ivory handle with baleen eyes, arts and crafts gold-filled collar, mahogany shaft and a horn ferrule-H. 7 1/2" x 1 3/4", O.L. 36 1/2"  
**\$500-\$700**

**156. Porcelain Dress Cane**

Ca. 1890-Cobalt dress cane with two gold-filled, beaded collars, hardwood shaft and a metal ferrule-H. 4 1/2" x 1 1/4", O.L. 35"  
**\$400-\$500**



156.

**157. Spanish Vera Cane**

Early 18th Century-A very unusual size for a Vera with silver and brass collars and attachments, chain lanyard, four scalloped collars and a early 2 1/2" brass ferrule-H. 2 1/4" x 1", O.L. 33"

**\$600-\$900**

**158. Pig Ivory Dress Cane**

Late 19th Century-A very formal presentation of a tusk with multiple silver rosettes, silver end cap, ornate signed sterling collar which is inscribed to "J. Kluge", oak shaft and a metal ferrule-H. 3" x 4", O.L. 34 1/2"

**\$500-\$700**

**159. Carved Scholar's Cane**

Late 19th Century-An unusual, natural briar handle with a 3D carving of a scholar in Roman attire reading a book, white metal collar, hardwood shaft and a bone ferrule-H. 5" x 4", O.L. 37"

**\$400-\$600**

**160. Erotic French Stanhope Cane**

Late 19th Century-Stag handle which incases a French full frontal nude prostitute, standing beside a root chair,clear image but impossible to photograph,hardwood shaft with a metal collar and ferrule.

The image pictured is much like the image in the cane.

-H. 4" x 1 1/4", O.L. 34 1/2"

**\$2,500-\$3,000**



157.



158.



159.



160.





162.



161.



163.



164.



165.



166.

**161. Ivory Dress Cane**

Ca. 1880-A unique fossilized ivory handle with a very ornate hexagonal end cap, ornate gold-filled collar, rich snakewood shaft and a 2 1/2" horn ferrule-H. 4 1/2" x 1 1/4", O.L. 34 1/2"  
**\$400-\$500**

**162. Bull Dog Toledo Sword Cane**  
 Late 19th Century-Massive bulldog handle which has two color glass eyes signed sterling, a 14" twist and lock blade which is 60% engraved, original Malacca shaft and a bi-metal ferrule-H. 3 1/2" x 3", O.L. 37"  
**\$1,500-\$2,500**

**163. Nautical Ashore Cane**  
 Ca. 1865-Carved whale's tooth handle, brass rivet attachments, 90% carved ebony shaft and a bi-metal ferrule-H. 1 1/2" x 2", O.L. 34 1/2"  
**\$400-\$600**

**164. Stag Fox Cane**  
 Mid 20th Century-The fox is well carved and has two color glass eyes, small bone collar, palm shaft and a bi-metal ferrule-H. 6" x 3", O.L. 37"  
**\$400-\$500**

**165. Eskimo Walrus Carved Cane**  
 Early 20th Century-A fossilized piece of ivory which has a very unique carving of three dogs and sled, hammered and beaded white metal collar, hardwood shaft and a bi-metal ferrule-H. 4" x 1 1/2", O.L. 34 1/2"  
**\$400-\$600**

**166. Folk Art Bird Cane**  
 Dated 1892-A whimsical carved one-piece cane from a natural branch, applied coin silver ribbon presentation with the following "John J. Toeller Denuel Colo. Sept. 22nd-92", bi-metal ferrule-H. 5", O.L. 34 1/2"  
**\$500-\$600**

**167. African American Stag Cane**

Early 20th Century-A carved gentleman with exaggerated features, signed sterling collar, hardwood vine shaft and a bi-metal ferrule-H. 4 1/2" x 5", O.L. 36"

**\$400-\$500**

**168. Stylized Eagle Gilded Cane**

Early 20th Century-An unusual American dress cane with faceted ruby eyes, no collar, ebony shaft and a bi-metal ferrule-H. 2 3/4" x 2 1/2", O.L. 37"

**\$400-\$500**

**169. Silver Art Deco Dog Cane**

Ca. 1920-A precision casting which is signed .800, probably German, ebonized shaft and a metal ferrule-H. 4 1/2" x 3 1/2", O.L. 39"

**\$600-\$900**

**170. Stylized Ivory Dress Cane**

Ca. 1895-An unusual carved handle with thumb rests, ornate gold-filled collar, hardwood shaft and a 3" bi-metal ferrule-H. 5" x 3", O.L. 35"

**\$400-\$600**

**171. Shagreen Crook Handle Cane**

Late 19th Century-A skin covered crook handle, no collar, large malacca shaft and a horn ferrule-H. 5" x 4 1/2", O.L. 35"

**\$300-\$400**



169.



167.



170.



168.



171.



174.



175.



173.



177.



172.

**172. Manta-Sting Ray Cane**

Ca. 1935-It is unusual to find a cane which is 95% covered but this one is, large brass collar and a brass matching ferrule-H. 5" x 1 1/4", O.L. 36"

**\$500-\$600**

**173. Ivory Dress Cane**

Ca. 1885-A partially carved fossilized ivory handle with an ornate end cap and ornate gold-filled collar, hardwood shaft and a bi-metal ferrule-H. 4 1/2" x 1 1/4", O.L. 34 1/2"

**\$300-\$400**

**174. Pig Ivory Snuff Box Cane**

Late 19th Century-Natural tusk with coin silver spade shaped end cap hinged box, hammered unsigned crown silver collar, natural wood shaft, and signed sterling and ivory ferrule-H. 6" x 1 1/2", O.L. 37"

**\$500-\$700**

**175. Nude Mermaid Cane**

Early 21st Century-A finely cast nude mermaid from the workshop of Charles Daugherty, inscribed "CWD", rich snakewood shaft and a bi-metal ferrule-H. 3 3/4" x 2", O.L. 36"

**\$500-\$700**

**176. Folk-Art Whimsy Cane**

Early 20th Century-A carved and polychrome one piece cane with 5 cages which contain wooden balls, retains 90% of original color and has no ferrule-O.L. 36"

**\$300-\$400**

**177. Mediterranean Dress Cane**

20th Century-A highly decorative brass-silver-ivory cane with a hardwood shaft and a rubber stopper ferrule.-H. 3" x 3", O.L. 36"

**\$300-\$500**

**178. Dartmouth College Cane**

Dated 1960-A nice 20th Century presentation of the age old example of this type of cane-  
O.L. 37"

**\$150-\$250**

**179. Silver Angel Crook Handle Cane**

Early 20th Century-A silver, probably Russian handle which has no hallmarks, mahogany shaft and a bi-metal ferrule-H. 5" x 4",  
O.L. 35 1/2"

**\$600-\$800**

**180. Mermaid Defensive Cane**

Ca. 1930-A silver plated heavy pewter handle probably used as a defensive cane, exotic wood shaft and a 2 1/2" bi-metal ferrule-H. 4 1/2" x 3 1/4", O.L. 37"

**\$300-\$400**

**181. Ivory Sunday Cane**

Early 20th Century-An elephant ivory Sunday stick, no collar, hardwood shaft and a bone ferrule-H. 4" x 3", O.L. 35 1/2"

**\$300-\$400**

**182. Folk-Art Snake Cane**

Mid 20th Century-A folk-art natural grown snake cane with two-piece tail, metal tongue and a metal ferrule-O.L. 35"

**\$300-\$400**



178.



179.



180.



182.



181.



183.



186.



184.



185.

**183. Cowboy 101 Ranch Cane**

Early 20th Century-A 101 Ranch souvenir from the Buffalo Bill Show, beadwork, leather covered shaft with the brass numbers 101, one piece hickory stick and no ferrule-O.L. 35 1/2"

**\$400-\$600**

**184. Ivory Monkey Automation Cane**

Ca. 1885-A prime example of this French cane in perfect working condition, by depressing the lever the eyes rotate and the red tongue sticks out as the jaw lowers, ivory collar, ebony shaft and a metal ferrule-H. 2 3/4" x 1 7/8", O.L. 33"

**\$1,000-\$1,500**

**185. Silver and Wood Dog Cane**

Ca. 1930-A one-piece carved dog cane with silver ears, nose and eyebrows, two color glass eyes and a metal ferrule-H. 5 1/2" x 5", O.L. 32 1/2"

**\$300-\$500**

**186. Tropical Bird Dress Cane**

Mid 20th Century-A carved bird with two color glass eyes, horn beak, silver overlaid feathers and a horn ferrule-H. 5 1/2" x 4", O.L. 35 1/2"

**\$300-\$500**

**187. Push-Up Candle Cane**

Late 19th Century-A brass plated handle with original mechanism which has a spring loaded top, small metal collar, snakewood shaft and a bi-metal ferrule-H. 4" x 1 1/4", O.L. 34 1/2"

**\$500-\$1,000**

**188. Folk-Art Cane**

Ca. 1925-A one-piece carved folk-art cane of a man in a beard and mustache, mahogany shaft and a brass ferrule-O.L. 33"

**\$100-\$200**

**189. Folk-Art Whimsy Cane**

Early 20th Century-Carved oak shaft with five cages and five wooden balls, attached folkly handle and a small iron ferrule-H. 6" x 1 1/2", O.L. 35"

**\$200-\$400**

**190. Balkan Piqué Dress Cane**

Ca.1890-Fruitwood with integral crook handle and a metal ferrule. Elaborate silver piqué and initials FR.-H. 5 3/4" x 4 1/4", O. L. 35 1/4"

**\$400-\$600**



188.



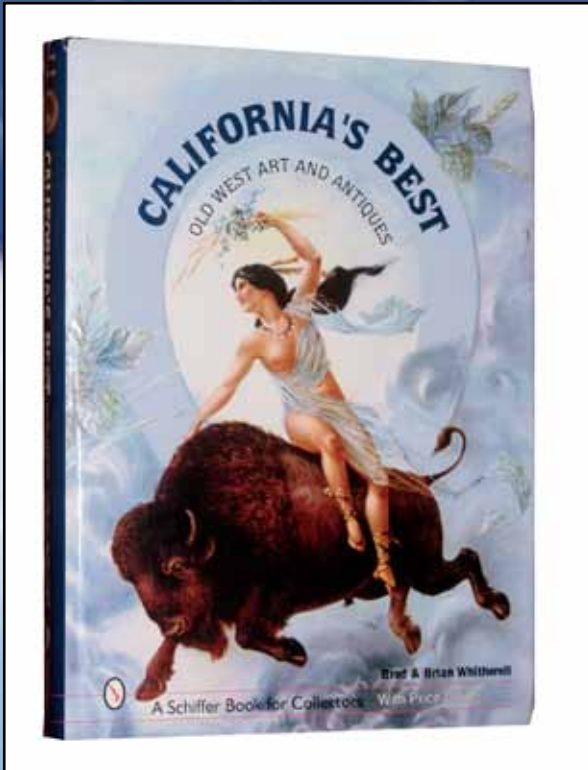
187.



190.



189.

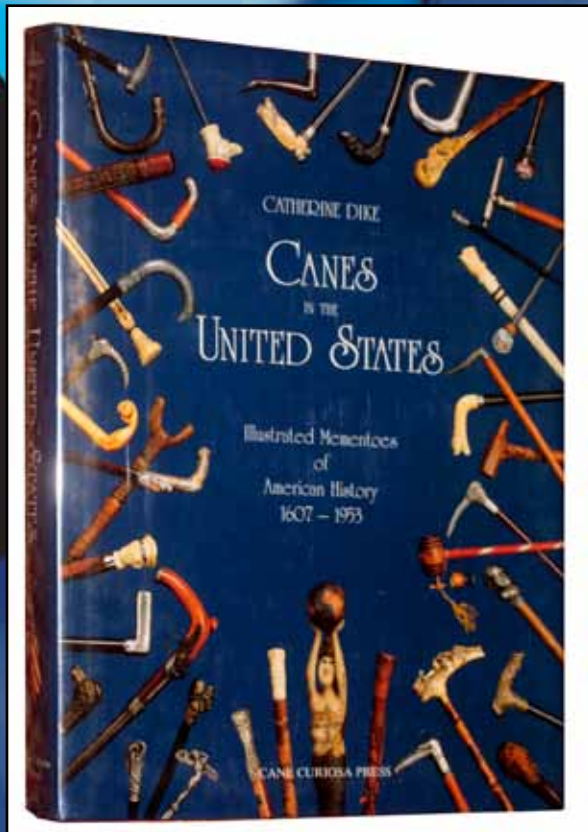


192.

**191. Sterling American Dress Cane**  
 Ca. 1890-A fancy STERLING signed silver handle with gilt collar, rosewood shaft and a horn ferrule-H. 3 ¼" x 1 ¾", O.L. 37"  
**\$200-\$300**

**192. "California's Best Old West Art and Antiques by Brad & Brian Whitherell"**  
**\$50-\$100**

**193. "Canes in the United States by Catherine Dike"**  
**\$75-\$100**



193.



191.

Kimball M. Sterling, Inc. (TFL-1915)  
125 West Market Street  
Johnson City, Tennessee 37601  
kimballsterling @ earthlink.net  
423.928.1471

Member National Auctioneers Association  
© Copyright 2011 Kimball M. Sterling, Inc.



Photography by James Price

Catalog Design by KT Design, LLC  
www.kristaff.com