

KIMBALL & VICTORIA STERLING PRESENT

THE  
**LIFETIME**  
CANE COLLECTION

OF  
**HANS MERIAM  
HENTZEN**

OFFICER OF ORANGE NASSAU,  
THE NETHERLANDS



SATURDAY, MARCH 17TH, 2012  
11:00 A.M. EASTERN

KIMBALL M. STERLING, INC.  
TFL-1915

# TERMS & CONDITIONS

1. Cash or check. A 20% buyers' premium will be added to the hammer price as part of the sale price for all bidders. We reserved the right to hold purchases until the buyers checks clears if buyer is not known by us. Bank letter of credit is acceptable.

2. Mail or phone bids are accepted; the firm may require a deposit.

3. Kimball M. Sterling, Inc. has endeavored to catalog and describe the property correctly. All property is sold as is and neither the auction company nor the consignor will be responsible for descriptions, genuineness, provenance or condition of the property. No statement in the catalog made orally at the sale or otherwise shall be deemed to be a warranty, representation, or an assumption of liability.

4. In the event of any dispute between bidders, the auctioneer shall have total discretion to determine the successful bidder, in which his determination shall be final or to re-offer and resale the article in dispute. Title of the item or items purchased by the bidder will pass at the fall of the gavel and declaration of bidder. This is not an approval auction. All measurements are approximate.

5. Principal auctioneer: Kimball M. Sterling #2467. B. Elizabeth Sterling, auctioneer # 5757. Firm Kimball M Sterling Inc. TFL-1915

6. Bidders may bid live on the Internet by visiting <http://www.auctionauction.com> You may also view the auction at this site and bid by phone.

7. Communications:  
Telephone 423-928-1471.  
Fax 423-928-2816.  
Cellular 423-773-4073, 423-773-4072.  
Email [kimballsterling@earthlink.net](mailto:kimballsterling@earthlink.net)

8. Kimball M Sterling has worldwide shipping available. Mr. Mark Winter handles all of the CITES permits for the buyers. After payment is received we will ship your purchases to him for your permitting. You will deal directly with him on the permits and shipping. We will charge a few to ship your canes to him. We do not ship endangered items in-house.

9. Kimball M. Sterling, Inc. will not be held responsible for bids received on the day of the auction, unexecuted absentee bids, phone bidders not contacted or slow Internet bids. Although we do attempt to get all bids executed problems do occur. There will be no recourse from the bidder. We will not be responsible for items left on our location for over 30 days.

10. Sale will be conducted at 125 West Market Street, Johnson City, Tennessee. 37604. Announcements day of the sale take precedence over pre-sale advertising. Any litigation that pertains to this auction will be conducted in the county of Washington in Tennessee and is agreed upon by registering for this auction.

11. Airport is the Tri-Cities Airport, which is approximately 20 miles from the gallery. Internet catalog and live bidding available at [www.auctionauction.com](http://www.auctionauction.com) Best Western Hotel: 423-282-2126. A very fine hotel which offers Sterling Auction a discount rate is the Carnegie Hotel 1216 W State of Franklin Rd, (423) 979-6400.

12. Please call for condition report on sale lots or email us. We do send out multiple photos by email of any lot in the auction. By registering for this auction you accept the terms.

13. Parking service is free.

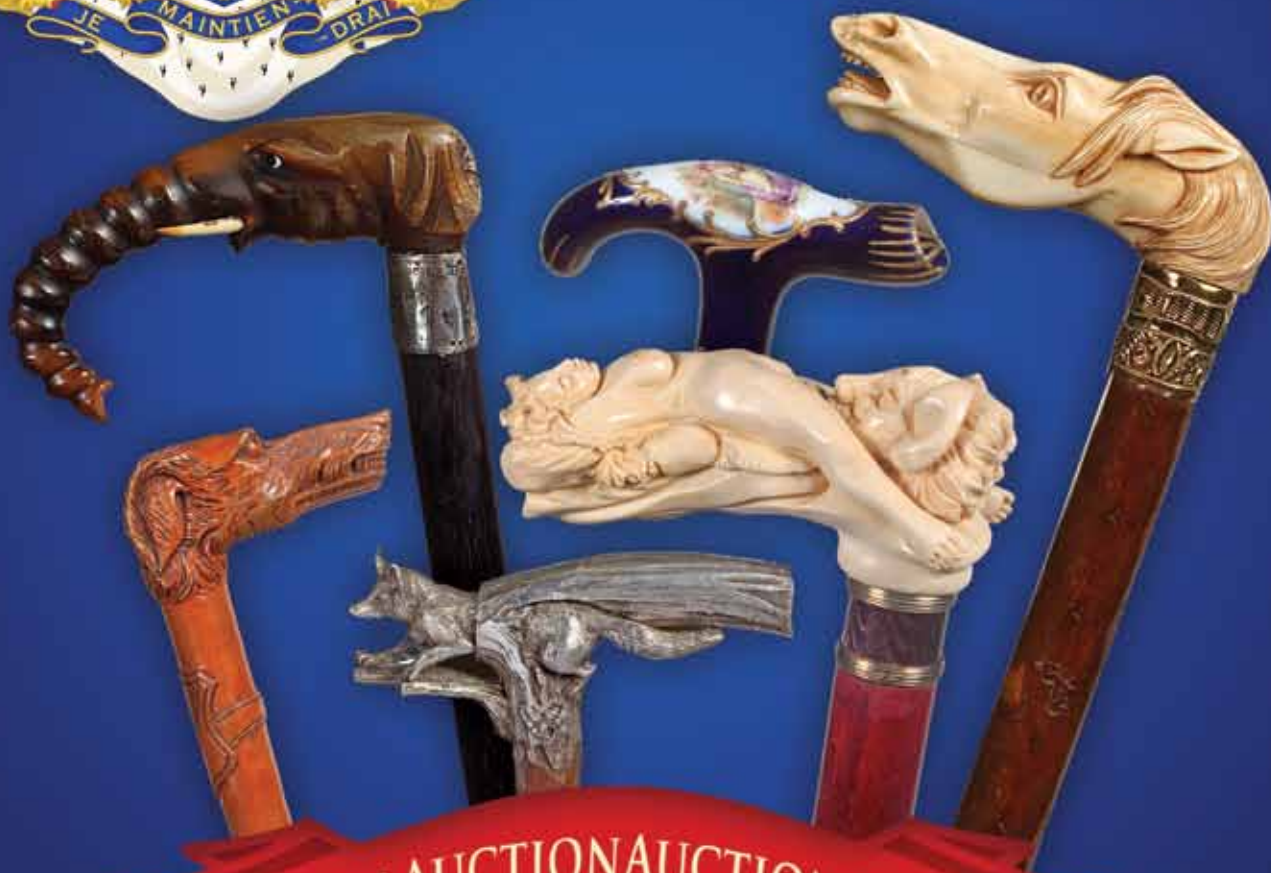


KIMBALL & VICTORIA STERLING PRESENT



# THE LIFETIME CANE COLLECTION OF HANS MERIAM HENTZEN

OFFICER OF ORANGE NASSAU, THE NETHERLANDS



[WWW.AUCTIONAUCTION.COM](http://WWW.AUCTIONAUCTION.COM)

Kimball M. Sterling Auction Gallery  
125 West Market Street  
Johnson City, Tennessee 37601  
kimballsterling @ earthlink.net  
423.928.1471

Live on the internet at  
[LIVEAUCTIONEERS.COM](http://LIVEAUCTIONEERS.COM)  
Two Time Winner of Best of Show  
from the National Auctioneers Association

**1. Bronze Nobility Cane**

Circa 1820-A bronze handle with a pair of stylized birds which are done in a saddle form, ribbed collar, replaced ebonize shaft and horn ferrule-H. 3 ½" x 6", O.L. 37"

**\$300-\$500**



**2. Pair of Gold Dress Canes**

Circa 1885-A nice pairing of two gold filled dress canes with what appears original shafts and metal ferrules, largest handle is 1 ½" x 2", longest length is 36"

**\$300-\$500**

**3. Carved Wood Horse Cane**

Circa 1880-A carved Asian horse with ornate decoration, crown nickel collar, hardwood shaft and a horn ferrule-H. 4" x 2", O.L. 37"

**\$300-\$500**



**4. Buffalo Horn Cane**

Early 20th Century-A nice segmented example in fine condition, steel rod within shaft and a horn ferrule-H. 2" x 3", O.L. 32 ½"

**\$200-\$300**



**5. Pair of Dress Canes**

20th Century-A silver plated devil and a Chinese stone carving, hardwood shafts and each has a ferrule, largest handle is 4 ½" x 4", O.L. on both 36"

**\$300-\$500**



**6. Erotic Dress Cane**

Circa 1940-A casting of a Monk and a naked lady, probably in nickel, metal collar, hardwood shaft and a horn ferrule-H. 3 ½" x 7/8", O.L. 38"

**\$300-\$400**







9.



7.

### 7. Shark Vertebrae Cane

Circa 1900-A nice example in fine condition with a metal rod and a horn ferrule-H. 1" x 1 1/16", O.L. 37"

**\$100-\$200**

### 8. Finland POW Cane

Dated 1943-This cane has various women in bathing suits, "Karelien, Kiestinki, Kuusamo," a richly carved hardwood shaft and no ferrule-O.L. 38.4"

**\$300-\$500**

### 9. Carved Cavalier Cane

Dated 1927-A finely carved fruitwood handle, sterling collar with London Hallmarks, hardwood shaft and a metal ferrule-H. 3 1/2" x 2", O.L. 38"

**\$300-\$500**



10.



8.

### 10. Gooney Bird Horn Cane

Circa 1890-A unique carved horn handle with glass eyes, ornate brass collar, twigspr shaft with nice patina and a metal ferrule-H. 4 3/4" x 2 1/2", O.L. 35"

**\$300-\$500**

### 11. Art Nouveau Dress Cane

Circa 1895-A stylized wood and amber substance handle, probably German, original wrist strap, signed 800 collar, faux bamboo shaft and a metal ferrule-H. 2 3/4" x 3 1/4", O.L. 34"

**\$300-\$400**



11.



12.

### 12. Ladies Cane Collection

Late 19th Century-A group of three various ladies silver canes with very ornate decoration, one with MOP with silver overlay, one is signed 800 silver with the name Cfscautz with the other two being unmarked, smallest handle is 2" x 4", O.L. for all is 35"

**\$400-\$600**

### 13. Cane Collection

Early to Mid 20th Century-A group of four canes which have good Ethnic backgrounds, all hardwood shafts and interesting decoration, smallest handle is 4" x 1 3/4", shortest length is 35 1/4"

**\$300-\$500**

### 14. Silver Dress Cane

Hallmarked 1901-A British Dress Cane Hallmarked Birmingham-H-C, nice condition, ebonized shaft and a metal ferrule-H. 3 5/8" x 4", O.L. 36 1/2"

**\$300-\$500**

### 15. Art Nouveau Silver Dress Cane

Late 19th Century-A beautiful sterling German handle, unidentifiable exotic hardwood shaft, very fine condition, and a brass ferrule-H. 3 3/4" x 4 3/4", O.L. 37 3/4"

**\$500-\$700**

### 16. Pillbox Porcelain Cane

20th Century-Ornate silver-plate handle which contains a porcelain top opening pillbox, ebonized shaft and a brass ferrule-H. 4 1/4" x 3 1/4", O.L. 37 1/2"

**\$200-\$250**

### 17. Diminutive Handle Cane Collection

Circa 1900-A group of three smaller handles with two being silver and the other gold filled, hardwood shafts and all have ferrules-smallest is 1 1/4" x 2 1/2"-average O.L. 36"

**\$400-\$600**

### 18. Dog Cane

Circa 1900-A carved head with glass eyes possibly meerschaum, sterling hallmarked German collar, oak shaft and a horn ferrule-H. 4 1/2" x 2 1/2", O.L. 36"

**\$300-\$500**

13.



14.



15.



16.



18.



17.





19.

22.



### 19. Silver Dress Cane

Late 19th Century-A German 800 silver dress cane, ebonized shaft and a metal ferrule, handle shows signs of wear with dents and dings-H. 4 3/8" x 4 1/2", O.L. 34 1/2"

**\$200-\$400**

### 20. Dog Whistle Cane

Early 20th Century-A handmade dog whistle which is fashioned out of an antler from a reindeer with the initials "J.E.", malacca shaft and a bi-metal ferrule-H. 2 1/2" x 4 1/2", O.L. 34"

**\$300-\$400**

21.

20.



### 21. Silver Dress Cane

Circa 1820-A well profoundly used 800 silver handle, ornate silver cartouche, one brass and one silver collar, "Kasper de Beer" is carved in the upper handle, worn hardwood shaft and a metal and stopper ferrule-H. 1 1/2" x 2", O.L. 36 1/2"

**\$200-\$300**

### 22. English Carved Dog Cane

Dated 1884-A beautifully carved burl handle which has a dog with two color glass eyes, a silver collar which is inscribed "Chester... August 20th 1884, natural twigspur shaft and a brass ferrule-H. 3 1/2" x 2 1/2", O.L. 35 1/2"

**\$300-\$500**



23.

### 23. Roman Relic Cane

Early 19th Century-This German cane has a pair of silver fittings, the first initials B.L., the second reads "Holz v. d. Romerbruck Castel Mainz 208 n.Ch", otherwise the handle is wood from the Roman Bridge near Casel Mainz, hardwood shaft, carved holes for wrist straps and a 2 1/2" silver colored ferrule-H. 6" x 2 1/2", O.L. 35.2"

**\$800-\$1,200**



**24. Three Modern Bone Canes**

Three brass collars, all hardwood shafts and each has a ferrule, smallest handle is 4" x 2 1/4", average O.L. is 36 1/2"

**\$400-\$600**



**25. Bronze Leda and the Swan Cane**

Circa 1930-Nice patina, gold plated silver collar and hardwood shaft which are probably replacements and a metal ferrule-H. 3" x 3 1/4", O.L. 37 1/2"

**\$300-\$500**



**26. Japanese Silver Handle**

Early 20th Century-An ornate silver handle with bamboo shoots and flowers with various long billed birds, silver collar, replaced ebonize shaft and a horn ferrule-H. 7" x 1 1/2", O.L. 38"

**\$300-\$500**

26.



**27. Egyptian Inlaid Cane**

Circa 1960-A fine example of this often seen subject matter with hundreds of pieces of pique work, bone collar, rich ebony shaft and a horn ferrule-H. 4" x 3", O.L. 38"

**\$300-\$500**

27.



28.



**28. Persian Khatam Cane**

Late 19th Century-Fine Persian work in great condition, and a wood ferrule-H. 5 1/2" x 3", O.L. 36 3/8"

**\$500-\$1,000**

**29. Bone Dog Cane**

Circa 1900-A carved horn dog with two color glass eyes, unmarked silver collar, spiral carved shaft and a copper ferrule-H. 4" x 1 1/16", O.L. 37"

**\$250-\$350**

29.







30.



31.



33.

32.



34.

### 30. Art Nouveau Sword Cane

Circa 1890-A silver-plate handle with a profile of a beautiful woman which is hallmarked with the letter O, 4 sided 23 1/2" blade with the cartouche "W. & S. T.", silver collar, twigspur shaft and a brass ferrule-H. 2 1/2" x 4 3/4", O.L. 34 3/8"

**\$500-\$700**

### 31. Silver Dress Cane

Circa 1890-A signed ornate sterling handle carved and silver overlaid upper shaft and a bi-metal ferrule-H. 1 3/4" x 1 1/2", O.L. 36"

**\$200-\$350**

### 32. Sodalite Scarab Cane

20th Century-A carved handle with a Egyptian symbol atop, white metal collar, replaced hardwood shaft and a metal ferrule-H. 2 3/4" x 1 1/2", O.L. 36"

**\$300-\$500**

### 33. Cigar Smoker's System Stick

Circa 1880-A signed sterling handle with a custom built cigar storage compartment and hinged ash tray, signed sterling collar, malacca shaft and a horn ferrule-H. 6" x 3", O.L. 35 1/4"

**\$600-\$1,000**

### 34. Himyar Cigarette Maker System Stick

Early 20th Century-A large silver handle which unscrews from a thick malacca shaft to find the cigarette making machine and a brass ferrule-H. 2 1/2" x 2", O.L. 37 4/8"

**\$400-\$600**

**35. English Dress Cane**

Hallmarked 1911-Silver handle with a pair of ribbed collars, bamboo shaft and a brass ferrule-H. 3" x 1", O.L. 37 ¼"

**\$200-\$400**

**36. Turtle Compass Cane**

20th Century-A carved bone turtle box which has a fluid filled compass, brass collar and mounts, faux bamboo shaft and a white metal ferrule, probably made as a custom piece-H. 1 ½" x 2 ½", O.L. 34 ½"

**\$300-\$500**

**37. Carved Folk Cane**

Circa 1890-A carved one piece cane of a gentleman in a top hat and scarf and no ferrule-H. 3 ½" x 1 ½", O.L. 35"

**\$150-\$250**

**38. Carriage Whistle Cane**

Mid 19th Century-A signed 800 silver handle which unscrews from a silver collar to produce a small silver whistle which was probably used to summon the carriage, lizard skin shaft and a metal ferrule-H. 3 ¼" x 3 1/2", O.L. 34"

**\$400-\$700**

**39. Sterling Vista Cane**

Circa 1885-A signed sterling vista with a hinged lid and striking surface which is mounted to a sterling collar, faux bamboo shaft and a copper ferrule-H. 2" x ¾", O.L. 35 ½"

**\$400-\$600**

**40. Carved Stag Otter Cane**

Mid 20th Century-A beautifully carved handle probably from an elk horn with two otters chasing a school of fish, silver-plated collar, exotic wood shaft and a horn ferrule-H. 3 ¼" x 3 ½", O.L. 37"

**\$400-\$600**



**36.**

**37.**



**35.**



**38.**



**39.**



**40.**





42.

**41. Carved Ivory Fist Cane**

Circa 1885-A very nicely carved fist and baton, exotic island shaft and a horn ferrule-H. 3 1/2" x 1 5/8", O.L. 34 1/2"

**\$1,200-\$1,500**

**42. Ivory and Bone Nautical Cane**

Circa 1880-A carved Right Whale's tooth handle, small nautical ivory collar, 5/8" whalebone shaft and no ferrule-H. 4 1/2" x 1 1/2", O.L. 35 1/2"

**\$2,200-\$2,600**

**43. Nautical Whalebone Cane**

Circa 1875-A carved whalebone tooth handle with baleen inlay, a 60% carved whalebone shaft with spirals and cross hatching, inlaid abalone disc atop the shaft and no ferrule-H. 1 3/8" x 2 1/4", O.L. 36"

**\$2,500-\$3,000**

44.



**44. Exotic Bird Cane**

Early 20th Century-A carved exotic wood head with two color glass eyes and an expertly carved whale's tooth beak, signed and hallmarked silver collar, honey maple shaft and a metal ferrule-H. 3 3/8" x 2", O.L. 35 5/8"

**\$400-\$600**

43.



41.



**45. Hippo Ivory Dress Cane**

Circa 1875-A carved tooth which looks much like a stylized talon, ornate gold-filled collar, hickory shaft and a metal ferrule-H. 4 ½" x 2 ¼", O.L. 34"

**\$400-\$500**

**45.**



**47.**



**46. Erotic Ivory Russian Cane**

Early 20th Century-A finely carved ivory handle featuring the Devil and a nude lady, the collar is gold and guilloché with the hallmarks of Erik Kollin, House of Faberge, 88 silver standard, CC, cherry stained, hardwood shaft and a bone ferrule-H. 4" x 1 ½" x 1 ½", O.L. 36"

**\$6,000-\$9,000**

**47. Carved Ivory Man Cane**

Early 20th Century-A large carving of a Biblical type of scholar, silver-plated collar, French mahogany shaft and a metal ferrule-H. 4" x 1 5/8" x 1 ½", O.L. 35"

**\$500-\$600**



**46.**



48.



**48. Classical Erotic Ivory Cane**  
 Mid 19th Century-A beautifully and expertly carved museum quality European nude with nice original patina, ornate silver collar with miniature fleur-de-lis and raised rims, original malacca shaft and a 1 1/2" ivory ferrule-H. 4 1/2" x 1 1/2" x 1 1/4", O.L. 35"  
**\$4,000-\$6,000**

**49. Carved Ivory Monkey**  
 Circa 1900-A great whimsical carving of a monkey with two color glass eyes, goggles and feathered hat, beaded silver collar, exotic wood shaft and a bi-metal ferrule-H. 3 1/2" x 1 3/4", O.L. 36"  
**\$1,200-\$1,500**

**50. Ivory Lion Cane**  
 Circa 1860-A European carved lion with two color glass eyes, brass collar, malacca shaft and a bi-metal ferrule-H. 4" x 1 1/2", O.L. 36"  
**\$350-\$450**

49.



50.

**51. Perfume or Scent Bottle Cane**

Patent 1894-An unusual system stick which is made on Cook's Patent No. 117, 1894, engraved lion cartouche with the words "Omnia Pincit Labor" (Love conquers all), top unscrews to expose a glass perfume bottle which soaks a cork on the inside of the top, ebonized shaft and a bi-metal ferrule, probably pewter or zinc-H. 3 ½" x 1 ¼", O.L. 35 ¾"

**\$600-\$900**

**52. Possibly Rhino Dress Cane**

Early 20th Century-A signed Brigg, possibly rhino dress cane with a NJ presentation inscribed, natural bark branch and a metal ferrule, possibly rhino.-H. 3 ¾" x 2 ½", O.L. 36"

**\$600-\$800**

**53. Railroad Silver Presentation Cane**

Early 20th Century-Unsigned silver handle with the inscription "J.N. Weaver from the J & A RR", rich snakewood shaft and a 1 ¾" brass ferrule-H. 7/8" x 1", O.L. 32 ¼"

**\$350-\$450**

**54. Gorham Sterling Dress Cane**

Dated 1882-A very fine stylized early Art Nouveau handle in fine condition, Gorham Hallmarked, ebonized shaft and a metal ferrule-H. 4 ¼" x 4", O.L. 36"

**\$500-\$700**

**55. Ivory Dog Cane**

Early 20th Century-Carved ivory greyhound or whippet with two color glass eyes, small gold-filled collar, fine snakewood shaft and a horn ferrule-H. 3 ½" x 2 ½", O.L. 34 ½"

**\$400-\$600**

**56. Ivory Horse Cane**

Early 20th Century-Carved ivory horse hoof and head with a two color glass eye, great patina, unsigned silver collar, exotic wood shaft and a brass ferrule-H. 4 ½" x 1 ¾", O.L. 35"

**\$500-\$600**

51.



52.



53.



54.



55.



56.







59.



57.

### 57. Ivory Horse Cane

Late 19th Century-A beautifully carved ivory horse head, ornate gold-filled collar, natural hickory shaft and a metal ferrule-H. 4" x 1 1/2", O.L. 35"  
\$700-\$1,000

### 58. Ivory Bull Dog Cane

Circa 1890-A massive carved bull dog with glass eyes, large signed sterling collar, exotic wood shaft and a metal ferrule-H. 5" x 1 5/8", O.L. 33"  
\$600-\$700

### 59. Ivory Dog Cane

Late 19th Century-English ornate hallmarked but unreadable collar, museum quality carving, mahogany shaft and a small brass ferrule-H. 3 3/4" x 2", O.L. 36"  
\$800-\$1,200



60.



58.

### 60. Ivory Whippet Cane

Circa 1900-A detailed carving with original patina and two color glass eyes, silver collar, carved hardwood faux bamboo shaft and a bi-metal ferrule-H. 5" x 1 1/4", O.L. 34 1/4"  
\$650-\$850

### 61. Japanese Snake Cane

Circa 1900-A carved stag handle with original patina, white metal collar signed "W.W.", odd carved cherry shaft with rings and other geometric designs, metal ferrule-H. 7" x 2 1/4", O.L. 34"  
\$500-\$600



61.



62.

### 62. Silver and Ivory Dress Cane

Circa 1890-A carved ivory handle with silver end caps, ornate silver collar with registration marks, hardwood maple shaft and a brass ferrule-H. 4 3/4" x 1 3/4", O.L. 36"  
\$400-\$500

**63. Japanese Monkey and Frog Cane**

Circa 1895-A carved stag handle which depicts an ape and a frog with three Japanese letters, signed sterling collar, faux bamboo partridge wood shaft and a bimetal ferrule-H. 4" x 1 ¼", O.L. 34"  
**\$500-\$600**



**63.**

**64. Japanese Ape Cane**

Circa 1895-A whimsical stag handle with original patina, small beaded glass eyes, silver collar with unreadable touch marks, exotic wood shaft and a 3 ¼" horn ferrule-H. 5 ¾" x 2 ¼", O.L. 36"  
**\$400-\$600**



**64.**

**65. Ivory and Gold Dress Cane**

Late 19th Century-Carved ivory handle with an ornate gold-filled end cap, matching ornate gold-filled collar signed "K. H.", exotic wood shaft and a metal ferrule-H. 4 ½" x 1 ½", O.L. 34 ½"  
**\$400-\$500**

**66. Japanese Stag Elephant Cane**

Circa 1890-A carved Asian mother elephant and her baby, small ornate gold-filled collar, exotic wood shaft and a metal ferrule-H. 6 ¼" x 1 ½", O.L. 37 ½"  
**\$500-\$600**



**66.**

**67. Japanese 1000 Face Cane**

Circa 1890-A signed carved handle, decorated gold-filled collar, ebonized shaft and a metal ferrule-H. 1 ½" x 1 ½", O.L. 34 ½"  
**\$500-\$600**



**65.**



**67.**

70.



68.



**68. Pair of Ivory Canes**

Early 20th Century-An ivory and ebony dress cane and an ivory and exotic wood dress cane-O.L. 33 ½" and 35", largest handle is 1 ½" x 1 ½"  
\$350-\$550

**69. Ivory and Gold Dress Cane**

Circa 1880-A nice ivory handle with gold decorations attached, gold end cap, ornate gold-filled collar, exotic wood shaft and a metal ferrule-H. 4 ½" x 1 ¼", O.L. 38"  
\$350-\$550

**70. Ivory Country Cane**

Late 19th Century-A large 2" x 2" ivory handle, diamond willow dressed and painted shaft and a brass ferrule-O.L. 39"  
\$300-\$500

**71. Carved Ivory Dress Cane**

Circa 1890-A nice Art Nouveau carving, original Malacca shaft and a horn ferrule-H. 3 ¾" x 1 ¾", O.L. 32 ½"  
\$300-\$500

71.



**72. Pair of Ivory Canes**

Circa 1885-A nice pair of ivory dress canes, both with collars, hardwood shafts and metal ferrules-largest handle is 1 ¾" x 1 ¾", O.L. 33" and 36"  
\$350-\$450

72.



69.





**73. Rhino Horn Shaft Cane**

Mid 19th Century-A rarely seen 31" x  $\frac{3}{4}$ " compressed rhino shaft, some worm damage to shaft but the cane has a 30 day return guarantee to the purchaser, elephant ivory top, small metal collar and a 2  $\frac{1}{4}$ " brass ferrule-H. 1  $\frac{1}{2}$ " x 1  $\frac{3}{4}$ ", O.L. 35  $\frac{1}{4}$ "  
**\$10,000-\$12,000**

**74. Ivory and Silver Art Deco Cane**

Circa 1920-Wonderful ivory and silver handle with Art Deco silver decorations, sterling end cap and collar, exotic wood shaft and an ivory ferrule-H. 4  $\frac{1}{2}$ " x 1  $\frac{1}{4}$ ", O.L. 34  $\frac{1}{2}$ "  
**\$400-\$500**

**75. Japanese Rabbit Stag Cane**

Circa 1890-A carved mother rabbit rabbit and her babies, stag handle which is signed with oriental characters, signed sterling collar, bamboo shaft and a bi-metal ferrule-H. 6  $\frac{1}{2}$ " x 1  $\frac{3}{4}$ ", O.L. 36"  
**\$600-\$700**

74.



73.



75.





78.



79.



76.



77.



80.



81.



82.

#### 76. Carved Dog Dress Cane

Circa 1900-A carved dog with two color glass eyes, Dutch Hallmark .835 silver collar, exotic wood shaft and a metal ferrule-H. 2 1/4" x 2", O.L. 35 1/2"  
\$300-\$400

#### 77. Art Nouveau Silver Dress

Circa 1900-A signed German .800 silver handle, partridgewood shaft and a metal ferrule-H. 3" x 4 3/4", O.L. 37" (small dent on end cap)  
\$250-\$350

#### 78. Asian Sword Cane

Early 20th Century-Stag handle, ornate silver cap, 28 3/4" blade, decorated hardwood shaft and a brass ferrule-H. 4" x 1 1/2", O.L. 37 1/4"  
\$300-\$500

#### 79. Indonesian Dagger Cane

Circa 1930-A carved dragon head handle which has a 6 1/4" two sided blade, tropical wood shaft and no ferrule-H. 1 1/4" x 5", O.L. 34 1/2"  
\$200-\$250

#### 80. Gentleman's Dress Cane

Circa 1900-A one piece crutch handle cane with ornate silver attachments, exotic wood shaft and a brass ferrule-O.L. 35 1/2"  
\$100-\$200

#### 81. Chinese Bone Cane

Early 20th Century- Polished horn handle, segmented bone shaft with inked immortals, and a wood ferrule. H.- 6" x 2 1/2", OL- 36"  
\$300-\$500

#### 82. Carved Dog Cane

Late 19th Century-A carved dog with a blank wooden cartouche, painted hardwood shaft and a stopper ferrule. H. 5 1/2" x 3 1/2", O.L. 38"  
\$200-\$300

**83. Silver Dress Cane**

Circa 1900-A German .800 silver dress cane with good hallmarks, hardwood shaft and a copper ferrule-H. 7 ½" x 3 ½", O.L. 36"  
**\$300-\$400**

**84. Asian Erotic Cane**

Late 20th Century-An erotic resin handle with paint decoration, walnut bulbous shaft and a brass ferrule-H. 2 ½" x 1 ¾", O.L. 37"  
**\$150-\$250**

**85. Art Nouveau Dress Cane**

Circa 1890-A signed .800 silver handle, ebonized shaft and a bi-metal ferrule-H. 2" x 4 ¼", O.L. 36"  
**\$300-\$400**

**86. Fox Dress Cane**

Circa 1885-A .800 silver casting with solid fox, ruby eyes, hardwood shaft and a horn ferrule. H. 2 ¾" x 5", O.L. 36"  
**\$500-\$1000**

**87. Moroccan Dagger Cane**

Circa 1935-A bone inlayed handle with an 8 ½" pike blade, appears to be bone and white brass, bone collar, ebonized shaft and a 3 ½" matching inlayed ferrule-H. 7 ¼" x 3 ¾". O.L. 36 ¼"  
**\$250-\$350**

**88. Porcelain Dress Cane**

Circa 1885-A fired porcelain handle which has various flowers and a gold thread as stems and leaved, gold metal collar, hard wood shaft and horn ferrule-H-2 1/4x 2 ¾. O.L. 34"  
**\$300-\$500**

**84.****83.****86.****85.****87.****88.**



90.



89.

**89. Ed Dooley's Gamblers Cane**  
Late 19th Century.- An open fret work enameled handle which contains two dice, blue green enamel with some damage, fruitwood branch shaft and no ferrule-H 3" x 2 1/4", O.L. 33 3/4"  
**\$500-\$700**

**90. Romantic Dress Cane**  
Circa 1900-A German .800 silver with courting scenes, animals and flowers, bamboo shaft and metal ferrule. H. 3" x 1 3/4", O.L. 38 3/4"  
**\$300-\$500**



91.

93.



**91. Celluloid Dog Cane**  
Early 20th Century- A molded handle, bronze faux stag collar, oak shaft and a horn ferrule. H. 2" x 4 1/4", O.L. 38 1/2"  
**\$200-\$300**

**92. Art Nouveau Silver Dress Cane**  
Circa 1890- A fine silver handle with minor dints and dings, signed coin .800, ebonized shaft and a metal ferrule. H. 4 1/4" x 3 1/2", O.L. 32", used but not abused.  
**\$300-\$500**



92.



94.

**93. Kissing Couple German Cane**  
Early 20th Century- A carved and painted couple with a rear lever that raises the heads of the couple and makes them kiss, malacca shaft with silver inlay and a brass ferrule. H. 3 1/2" x 2", O.L. 37 3/4"  
**\$300-\$500**

**94. Ivory Automated Spaniel Cane**  
Circa 1930-A carved ivory spaniel with two color glass eyes, ivory push button on rear of shaft which makes the jaw move ,hardwood shaft, and a metal ferrule. H.-1.5" x 1.5" OL- 36"  
**\$400-\$600**

**95. Secret Compartment Cane**

Circa 1900- A signed sterling box atop a walnut handle, banded inlay on a restored oak shaft and a metal ferrule. H. 2 ¾" x 1 ¾", O.L. 36"

**\$250-\$400**

**96. Coal Miners Watch Cane**

Late 19th Century- A brass watch holder which contains a steel watch, these holders were used to protect watches for miners in the district of Wales, brass collar, hardwood shaft and a 2" pike ferrule.

H. 1 ¼" x 3 ¼", O.L. 34 ¾"

**\$400-\$800**

**97. Snuff Box Cane**

Late 19th Century- A silver plated and professionally polished snuff box mounted atop a hardwood shaft, fluted plated collar and a pike ferrule. H. ¾" x 2 ¼", O.L. 38 ¼"

**\$300-\$400**

**98. Corkscrew Bone Cane**

Late 19th Century- A carved horn animal which unscrews from the shaft to produce a corkscrew, inlaid bone teeth and eyes, bamboo shaft and a bimetal ferrule.

H. 2 ¼" x 2 ¾", O.L. 39",

corkscrew 3"

**\$400-\$600**

**99. Carved Rabbit Antler Cane**

Early 20th Century- A whimsical carved, probably moose antler rabbit, bone collar, exotic wood shaft and a bone ferrule.

H. 1 ½" x 3 ½", O.L. 38 ½"

**\$400-\$600**

**100. Erotic Horn Cane**

Circa 1940- A carved couple out of caribou horn, red copper base and collar, bronze decorated ring, exotic wood shaft and a copper ferrule.

H. 2 ½" x 2", O.L. 39 ½"

**\$300-\$500**

95.



96.



97.



98.



99.



100.

102.



103.



104.



101.



105.



### 101. Parrot Dress Cane

Circa 1925- A molded and decorated acrylic bird with lapis eyes, bronze collar, ebony shaft and a bi metal ferrule.

H. 3 ¾" x 3 ¼", O.L. 34"

\$300-\$500

### 102. Celluloid Dog Cane

Circa 1940-A molded handle, metal collar, hardwood shaft and a metal ferrule. H. 2 ¼" x 5 ½", O.L. 34 ¼"

\$100-\$200

### 103. Nutcracker Cane

Circa 1900-An expertly carved English nutcracker which has been mounted atop an exotic wood shaft, hallmarked silver collar and a horn ferrule.

H. 6" x 2 ¾" O.L. 37 ¾"

\$400-\$600

### 104. Powder Box System Cane

Late 19th Century-A courting scene powder box with its original beveled mirror mounted atop a plated collar, by turning the handle the shaft opens and contains four faux tortoise shell manicure instruments, hardwood shaft and a metal ferrule.

H. 2 ½" x 1 5/8", O.L. 36 ½"

\$500-\$600

### 105. Nude Dress Cane

Early 19th Century-A silver plated metal handle, silver collar and a presentation collar, hexagonal maple shaft and a metal ferrule.

H. 3 ½" x 1 ¾", O.L. 36 ½"

\$200-\$400



**106. Folk-art Cane**

Late 19th Century-A one piece carved natural branch shaft, carved lanyard holes, maybe a gnome and a brass ferrule.

H. 5 ½" long, O.L. 38 ½"

**\$200-\$300**

**106.**

**107. Stag and Gold Dress Cane**

Circa 1880-A decorated stag handle with a gold filled end cap, brass collar, hardwood shaft and a brass ferrule.

H. 5 ¼" x 1 ¼", O.L. 3"

**\$250-\$350**



**107.**

**108. Horse of Buggy Whip Cane**

Late 19th Century-A stag handle system stick with a 30" woven whip in fine condition, silver collars, ebonized shaft and a horn ferrule.

H. 5" x 1 ¾", O.L. 38"

**\$400-\$600**



**108.**



**109.**

**109. Horse and Dog Folk Cane**

Circa 1880-Stag handle, silver collar, carved horse and dog on the upper shaft, tree branch shaft and no ferrule. H. 4" x 1 ¾", O.L. 33"

**\$300-\$500**



**110.**

**110. Stag and Silver Dress Cane**

Dated 1892-Stag handle with an ornate sterling overlay, Birmingham hallmarked collar, hardwood shaft and a metal ferrule.

H. 4" x 1 ½", O.L. 32"

**\$300-\$400**

**111. Telescope System Cane**

20th Century-A two draw brass telescope in working condition which is mounted in a wooden ball with a bronze crown attached, brass collar, hardwood shaft and a 3" brass ferrule.

H. 6" x 2", O.L. 37 ¾"

**\$300-\$500**



**111.**

112.



113.



**112. Alabaster Dress Cane**

Late 19th Century-A nicely formed handle which silver collar is previous to the stone, hallmarked Sheffield 1774, ebonized hardwood shaft and a brass ferrule. H. 1 ½" x 1 ¼", O.L. 36" \$300-\$500

**113. Porcelain Dress Cane**

Circa 1880-A painted, Meissen style handle, ornate gold plated collar, two piece hardwood shaft with joining collar and a steel ferrule. H. 2 ½" x 1 ¾", O.L. 37 ¾" \$300-\$500



**114. Swan Dress Cane**

Circa 1900- A celluloid swan with two color glass eyes, bronze collar, hardwood shaft, and a metal spike ferrule. H.- 4" x ' OL.- 36" \$300-\$500

115.



**115. Horn Letter Opener  
Defensive Cane**

Late 19th Century-A carved monkey with yellow glass eyes, handle which has been broken and repaired, silver collar signed .925, 6" blade with both inches and cm, chipped carved hardwood shaft and a horn and pewter ferrule. H. 4" x 3", O.L. 36 ¾" \$300-\$400

114.



117.



116.



**116. Tepliz Dog Cane**

Early 20th Century- A silver overlaid crook cane with two colored glass eyes, hickory branch shaft and a metal ferrule. H. 6" x 3", O.L. 37" \$400-\$600

**117. French Folk-art Cane**

Circa 1915-A fully carved shaft with Eve-the snake, fruits and foliage and the raised carving, "Bois le Pretre"(Priest Woods, WWI theater with the Germans and the French) brass ferrule, O.L. 37" \$500-\$700

**118. Gold Filled Dress Cane**

Circa 1900-An American gold filled dress cane, ebony shaft and a bimetal ferrule.

H. 3 ½" x 2", O.L. 34 ¾"

**\$250-\$250**



**118.**

**119. Horn Mallard Duck Cane**

Circa 1925- A carved horn duck with two colored glass eyes, white metal collar, thick hardwood shaft and no ferrule.

H. 4 ½" x 2 ½", O.L. 36

**\$250-\$400**



**119.**

**120. Modern Erotic Bone Cane**

Brass collar, mahogany shaft and a brass ferrule. H. 3 ¾" x 3 ¾", O.L. 36 ½"

**\$300-\$500**



**120.**

**121. Modern Erotic Bone Cane**

Carved bone handle, brass collar, segmented full bone shaft and a 2 ½" brass ferrule.

H. 5 ½" x 1 ½", O.L. 36 ½"

**\$400-\$600**

**121.**

**122. Modern Erotic Bone Cane**

Carved bone handle which is falsely dated 1871, brass collar, segmented shaft and a metal ferrule. H. 4 ½" x 1 ¼", O.L. 35"

**\$400-\$600**



**122.**

**123. Gamblers System Cane**

Late 19th Century-A mother of pearl and brass glass covered dice cup with three dice, small metal collar, silver eyelets with chain, maple shaft and a brass ferrule.

H. 2" x 1 ¾", O.L. 35 ½"

**\$400-\$600**



**123.**

**124. Stag High Button Shoe Cane**

Circa 1930-A carved shoe probably out of moose antler, small bone collar, exotic wood shaft and a bone ferrule. H. 3 ¼" x 4", O.L. 36 ¾"

**\$300-\$400**



**124.**





125. 127.



**125. Cigar Smoking System Stick**

Circa 1930-A carved and painted lever automated handle with moving eyes, hat and cigar, painted collar, ebonized shaft and a metal ferrule.

H. 3" x 1 1/2", O.L. 36 1/4"

**\$300-\$500**

**126. Turkish Dress Cane**

Circa 1930-A hand crafted pearl/silver inlaid cane which is worked in its entirety, brass chain, brass collar and a brass handle. O.L. 37"

**\$200-\$300**

**127. Container System Stick**

Circa 1930-A removable brass handle which has an attached horse with crown, the shaft has enough room to store dice or other items, thick hard wood shaft and a 3" brass ferrule. H. 1 1/2" x 2 1/2", O.L. 36"

**\$250-\$350**

126.



129.



**128. Flute/Piccolo System Stick**

Circa early 20th Century-An ebony piccolo with nickel silver keys which detaches from its custom shaft and can be played, nice condition, been together for a long time and a horn ferrule. O.L. 32"

**\$500-\$800**

**129. Biblical Scholar Cane**

Late 19th Century-A carved and painted folk-art cane with natural vine growth with a devil head carved near the center and a metal ferrule.

H. 2 1/2" x 2", O.L. 34"

**\$250-\$400**

128.



**130. Two Celluloid Canes**

Early 20th Century-A pair of celluloid canes, one with a silver collar, both with hard wood shafts and both have ferrules. O.L. 35 3/4"

**\$200-\$300**

130.

**131. Porcelain Compartment Cane**

Early 20th Century- A painted porcelain round ball, .800 silver marked collar, hardwood shaft and a bi metal ferrule.

H. 2" x 2", O.L. 34 3/4"

**\$400-\$600**

**132. Bronze Elephant Cane**

Circa 1930-A well cast bronzed elephant which is probably a defensive cane, an ornate gold-filled collar, mahogany shaft and a horn ferrule. H. 2" x 2", O.L. 36"

**\$300-\$400**

**133. Grotesque Brothers Cane**

Mid 20th Century.-A one piece carved branch with two wild characters and no ferrule. O.L. 36 3/4"

**\$200-\$300**

**134. Carved Lion Stone Cane**

Circa 20th Century-A carved lion which appears to be some type of jade, a hallmarked earlier English silver collar, thick hardwood shaft and a horn ferrule.

H. 5" x 1 1/2", O.L. 36 3/4"

**\$300-\$400**

**135. Royal Hussars Officers Cane**

Early 20th Century-A system stick which has a compass atop and a four draw brass telescope in the shaft, the scope extends to 15" and has a chip on one of its lenses, the large brass handle is 7" long, massive bamboo shaft and a horn ferrule. O.L. 39 3/4"

**\$500-\$700**

**136. Cigarette Holder System Stick**

20th Century-Carved crook handle with a silver end cap and a silver medallion, hallmarked sterling collars, a compartment holds a bone cigarette holder, thick bamboo shaft and a bi metal ferrule.

H. 4 1/4" x 6", O.L. 38"

**\$300-\$400**

**133.**



**131.**



**135.**



**134.**



**136.**



**132.**



138.



137.



**137. Carriage Whistle/ Corkscrew Cane**  
Late 19th Century-A hands on whistle handle which unscrews from the shaft and produces a three inch corkscrew, the nickel silver handle attaches to a long nickel collar, exotic wood shaft and a bi metal ferrule. H. 2 ½" x 2", O.L. 35"  
**\$500-\$700**

**138. Cosmetic/Compact Powder Cane**  
Circa 1900-An enamel decorated powder box, probably silver, ornate pewter collar, hanging silver hallmarked perfume bottle, malacca shaft and a bimetal ferrule. H. 2 ¼" x 1 ½", O.L. 36"  
**\$500-\$700**

139.



**139. Sterling Dress Cane**  
Circa 1890-An art nouveau hallmarked sterling handle, unmarked sterling collar, exotic wood shaft and a horn ferrule. H. 3" x 1 ¼", O.L. 36"  
**\$300-\$400**

140.



**140. Prussian Soldiers Cane**  
Early 20th Century-Three original cartridges attached to a collar which is marked on one side 21, probably from the regiment and the other side with a 6, "Keleruifl Bale 6 Comp." Etc is also painted on the unusual veneered shaft, bronzed snake coiled near the top of the shaft and a full bullet ferrule. H. 2 ½" x 3 ½", O.L. 33 ½"  
**\$300-\$500**

141.



**141. Amber/Ivory Snuff Cane**  
Circa 1880-An 1 ½" amber ball atop an ivory pedestal, .900 silver collars, handle unscrews to what appears to be a snuff spoon or other illegal substance, ebony shaft and a horn ferrule. H. 2 ¾" x 1 ½", O.L. 36 ½"  
**\$500-\$600**



**142. Exotic Horn Cock Cane**

Circa 1885-A carved bovine horn with mother of pearl eyes, bone collar, twig spur shaft and a brass ferrule. H. 5 ½" x 2", O.L. 34 ½"  
**\$400-\$600**



**142.**

**143. Flute System Cane**

Hallmarked 1937-Bamboo handle and shaft, inside of the cane there is a brass pan flute, London hallmarks and a silver plated ferrule. H. 12" x 6", O.L. 36 ¾"  
**\$300-\$400**



**143.**

**144. Porcelain Dress Cane**

Circa 1925-A hand painted handle, silver plated collar, hardwood shaft and a bi metal ferrule. H. 3" x 1", O.L. 35"  
**\$200-\$300**



**146.**

**145. Art Nouveau Dress Cane**

Circa 1895-An ornate silver handle with a hard celluloid twisted decoration, silver collar, mahogany shaft and a bone ferrule. H. 3 ¾" x 3", O.L. 36"  
**\$250-\$350**



**145.**

**146. Legionaries Carved Horn Dress Cane**

Late 19th Century-A very detailed carving, unmarked coin silver collar, 1 ¼" Malacca shaft and a large brass ferrule. H. 3 ½" x 1 7/8", O.L. 37 ¼"  
**\$500-\$700**



**147.**

**147. Russian Enamel Dress Cane**

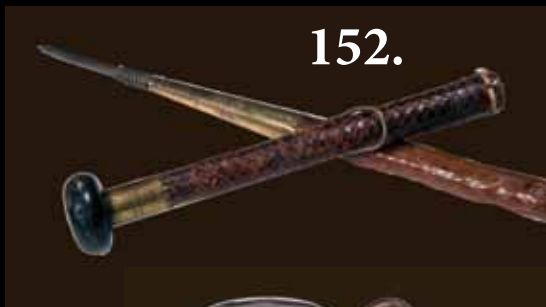
Circa 1925-A very nicely decorated handle in fine condition, large ebony shaft and a bi metal ferrule. H. 3" x 1 ½", O.L. 37 ½"  
**\$500-\$600**



**144.**



151.



152.



149.



148.



150.



153.

#### 148. Porcelain Dress Cane

Circa 1885-A nicely fired and decorated Meissen style handle, ribbed brass collar, ebony shaft and a bi metal ferrule.

H. 1 3/4" x 4", O.L. 35"

\$400-\$600.

#### 149. English Watch Cane

Hallmarked 1841-A working watch by London clockmaker J.N. Morton, hardwood shaft and a metal ferrule.

H. 1 1/2" x 1 3/4", O.L. 34"

\$500-\$800

#### 150. Carved Nut Cane

Circa 1880-A carved nut with painted eyes, nice detail, malacca shaft and a stopper ferrule.

H. 1 1/2" x 1 1/2", O.L. 35 1/2"

\$250-\$400

#### 151. Crystal Knob Dress Cane

Circa 1930-A crystal stopper handle, ornate pewter collar, hardwood shaft and a metal ferrule.

H. 2 3/4" x 1 3/4", O.L. 36"

\$200-\$300

#### 152. Makhila Weapon Cane

Late 19th Century- An original Spanish cane, horn handle, woven leather hand grip, knotty wood shaft and a defensive ferrule.

H. 8" x 1 1/2", O.L. 35 1/4"

\$400-\$600

#### 153. Candle Lantern Cane

Circa 1875-Ornate silver plated engraved handle with birds and double ring collar which holds a unique folding candle lamp with mica, mahogany shaft and no ferrule. H. 1 3/4" x 1 1/4", Lantern: 2 1/2" x 1 3/4" x 3 1/4", O.L. 35 3/4"

\$1000-\$1500

**154. Buffalo Horn Dress Cane**

Late 19th Century-An early Indonesian cane, not airport art, which has a carved dragon, horn shaft with various colors of segmented pieces and 3" horn ferrule. H. 4" x 2 1/2", O.L. 35"

**\$200-\$400**

**155. Bronze Dog Cane**

Circa 1875-A nicely cast bronze handle,ebony shaft and a copper ferrule, H. 2 1/2" x 3", O.L. 32 1/2"

**\$150-\$250**

**156. Ceremonial Hiking Stick**

Early 20th Century-Ornate bell bronze handle, original woven lanyard, various copper and bronze attachments, pyro decorated shaft and a pike ferrule.

H. 1 1/4" x 5", O.L. 34 3/4"

**\$200-\$300**

**157. Camera System Stick Cane**

Early 20th Century-A camera tripod, unscrew the ferrule and the metal tripod releases, accompanying this lot is a vest pocket Kodak model B in working order. O.L. 36 3/4"

**\$500-\$1000**

**158. Anti-Semitic Stag Cane**

Early 20th Century-A carved stag handle with two colored glass eyes, metal collar, hardwood shaft and a bi metal ferrule.

H. 4 " x 4 1/2", O.L. 34 3/4"

**\$300-\$500**

**159. Bone Dog Cane**

Late 19th Century-A carved dog or wolf with two colored glass eyes, ornate pewter collar, hardwood shaft and a bi metal ferrule.

H. 3" x 2 1/2", O.L. 36"

**\$300-\$400**







163.

160.



**160. Dutch Folk-Art Cane**

Late 19th Century-Silver plated handle, carved for a Dutch wine winery, raised hunter, ducks, leaves and grapes, "Houwer wijnkoop Goes", also "A. Eeckhout Hulst 1896", metal ferrule. O.L. 33"

**\$400-\$800**

**161. Asian Horn Cane**-Early 20th Century-A stylized horn handle, carved segmented bone shaft with various humans and a wood ferrule. Very richly carved, not a piece of airport art. O.L. 36"

**\$500-\$700**

161.



**162. Corkscrew Cane**

Mid 20th Century-A vine handle which also doubles as a corkscrew, brass collar, hardwood shaft and a brass ferrule.

H. 1" x 7 1/2", O.L. 38 1/2"

**\$150-\$250**

**163. Putter/Tobacco System Stick**

Circa 1900-An silver plated handle which doubles as a cigarette case, faux bamboo shaft and a bi metal ferrule. H. 2 3/4" x 3 3/4", O.L. 36"

**\$400-\$600**

**164. "Out of Africa" Cane**

20th Century-A pair of carved bone African fertility Gods with hair and fur attached, spiral hardwood shafts and copper ferrules.

H. app 4 1/2" x 1", O.L. app 37"

**\$500-\$600**

**165. Flintlock Cigar Lighter**

19th Century-A cigar lighter with its original flint which has been attached by a silver collar to a faux bamboo hardwood shaft and a brass ferrule. H. 5" x 1 1/2", O.L. 38"

**\$700-\$1000**

164.



165.



**166. Italian Flute System Cane**

Circa 1900-A nice horn handle, silver plated flute and a long ebony ferrule with a brass tip.

H. 4" x 2 1/4", O.L. 37 1/4"

**\$500-\$700**

**167. Glove Holder Dog Cane**

Circa 1900-A nicely carved dog with two colored glass eyes, bone ears, opening mouth with lever, small bone collar, hardwood shaft and a bone ferrule. H. 3" x 2", O.L. 36"

**\$400-\$600**

**168. Presidential Campaign Cane**

Circa 1896-A noise making cane for the campaign of President McKinley, working condition, exotic wood shaft and a horn ferrule.

H. 4 1/2" x 1 1/2", O.L. 35 1/2"

**\$200-\$400**

**169. McKinley Political Cane**

Dated 1896-A very nice example which doubles as a defensive cane due to its weight, with most of the original silver plate still existing, ebonized shaft and a bi metal ferrule. H. 3" x 2", O.L. 36"

**\$200-\$300**

**170. Sterling Dress Cane**

Circa 1890-A nice art nouveau handle with minor dings, hallmarked but unreadable, hardwood shaft and a metal ferrule.

H. 2 1/4" x 4", O.L. 35 1/2"

**\$200-\$300**

**171. Erotic Nude Dress Cane**

Circa 1870-A heavy silver plate cast handle, textured and varnished hardwood shaft and a brass ferrule.

H. 3 1/2" x 2 1/2", O.L. 34 1/2"

**\$500-\$600**

**167.**



**166.**



**168.**



**169.**



**170.**



**171.**



174.



173.



172.



### 172. Horn Lion and Claw Cane

Hallmarked 1909-A nicely carved handle with only one glass eye, missing parts from right ear but beautiful carved claw, Birmingham hallmarked silver collar, ebonized shaft and a brass ferrule.

H. 3 ½" x 4 ¾", O.L. 36 ½"

**\$400-\$600**

### 173. Folk-art Snake Cane

Circa 1930-A one piece carved black mamba snake cane with no ferrule. O.L. 32 ½"

**\$150-\$250**

### 174. German Hiking Cane

20th Century-An original pick ax handle, seven various visit shields, maple shaft and a pike ferrule. H. 5 ¼" x 1 ¼", O.L. 36 ½"

**\$150-\$250**

175.



### 175. Indonesian Sword Cane

Circa 1965-A stylized horse handle with a bone collar, signed India 23 ½" blade, hardwood shaft and a brass ferrule. Problem with locking mechanism.

H. 3 x 4 ¾", O.L. 35 ½"

**\$100-\$200**

176.



### 176. Horse Measure System Stick

Early 20th Century-A well used hands measuring stick with working level, worn hardwood crook shaft and a metal ferrule. O.L. 37"

**\$200-\$300**

177.



178.



### 177. POW Cane

Dated 1944-A German POW cane belonging to Van Dillen who was a member of General Rommel's African Corps, Prisoner at Camp Pickett in the USA, all wood cane and no ferrule.

O.L. 37 ¾"

**\$100-\$200**

### 178. Bone Monkey Cane

Late 20th Century-A carved bone monkey with beaded eyes, segmented bone shaft and a horn ferrule. H. 5" x 1 ½", O.L. 35"

**\$300-\$400**



**179. Art Deco Flapper Cane**

Circa 1930-A hallmarked silver hat on a molded celluloid head, ornate silver collar, exotic wood shaft and a brass ferrule. H. 3 ¾" x 2", O.L. 37 ½"  
**\$400-\$600**

**180. Fantasy Dog Cane**

20th Century- A porcelain dog, atop a wood ball, small brass collar, hardwood shaft and a bi metal ferrule. H. 2 ½" x 2 ¼", O.L. 37 ¼"  
**\$100-200**

**181. Silver Dress Cane**

Late 19th Century-A high relief silver handle, twig spur shaft with bark and a bi metal ferrule. H. 1 ½" x 3 ½", O.L. 34 ¾"  
**\$200-\$300**

**182. Hog Tusk Cane**

20th Century-A highly polished tusk, bone collar, alternating bone and exotic wood shaft and a 4 ¾" bone ferrule. H. 5 ½", O.L. 35 ¼"  
**\$300-\$500**

**183. Pocket Knife System Cane**

Late 19th Century-The burl handle has a push button which releases an early folding pocket knife, brass collar, exotic twig spur shaft and a bi metal ferrule. H. 1 ¾" x 4", O.L. 35 ½"  
**\$300-\$500**

**184. Erotic Wood Stanhope**

Late 19th Century-A French partially nude Stanhope of a lady sitting at a desk, knotty burl shaft and a horn ferrule. O.L. 34"  
**\$400-\$600**

**185. Gold Filled Dress Cane**

Circa 1900-An ornate designed handle and collar, snakewood shaft and a bi metal ferrule. H. 2 ½" x 1 ½", O.L. 36"  
**\$300-\$500**



181.



180.



179.



182.



184.



183.



185.

186.



189.



190.



187.



188.



191.



### 186. Stag Hand Cane

Early 20th Century- A nicely carved hand and snake antler handle, bone collar, exotic wood shaft and a stag ferrule.

H. 3 ¾" x 1 ¼", O.L. 39 ½"

\$300-\$500

### 187. Porcelain Dress-Cane

Late 19th Century-A Limoge style hand painted handle with heavy gold decoration, two plated collars, mixed wood shaft and a bi metal ferrule. H. 5 ¼" x 1 ¼", O.L. 34 ¾"

\$400-\$700

### 188. Burl Carved Horse Hoof

Circa 1900-A nicely carved horse hoof with a silver horseshoe attached, scalloped silver collar, oak shaft and a metal ferrule.

H. 1 ½" x 4 ¼", O.L. 38"

\$300-\$500

### 189. Japanese Folk Cane

Circa 1890-A one piece dogwood shaft with a bone snake and critter carved within and a copper ferrule. O.L. 35 ¼"

\$400-\$600

### 190. French Silver Dress Cane

Late 19th Century-A well cast silver handle, silver collar, ebonized shaft and a bi metal ferrule.

H. 2 ½" x 1 ½", O.L. 36"

\$400-\$600

### 191. Defensive Weapon Cane

Late 19th Century-A bell bronze heavy casting of a one-eyed soldier, thick pine shaft and a large brass ferrule-H. 3 ¼" x 2 ¼", O.L. 32 ½"

\$400-\$500

**192. Tipplers Cane**

Late 19th Century-A nice firm example with both glass and tube, copper handle and collar, maple shaft and an iron ferrule-O.L. 36"

**\$300-\$500**



**192.**

**193. Cromwell Folk Cane**

Late 19th Century-A carved portrait with red glass eyes which were probably added later, silver collar, malacca reed shaft, oral legend states that this is from a descendant of Cromwell's-H. 3 1/4" x 1 1/2", O.L. 33"

**\$250-\$350**



**193.**

**194. Horn Bird Cane**

Late 19th Century-A carved stylized bird with two colored eyes, silver collar, segmented ornate horn disc and tube shaft, Cromwell's oral legend also goes with this cane and an iron ferrule.

H. 4 1/4" x 1", O.L. 34"

**\$300-\$500**



**194.**

**195. Chinese Bone Cane**

Circa 1930-A fully carved bone handle and shaft which is not a recent import, carved spiders and bug, broken bone on handle and a brass handle-O.L. 39 1/4"

**\$300-\$500**



**195.**

**196. Folk Art Cane**

Circa 1880-An unusual one piece carved cane with an animal with two colored glass eyes as the handle, various carved creatures and humans on the natural knots and an iron ferrule-O.L. 36 3/4"

**\$500-\$700**



**196.**

**197. Last Rights Priest Cane**

Circa 1900-A communion cane which handle has three compartments which are labeled, OS-SC-OI, thick ebonized shaft and a brass handle-H. 2 1/4" x 1", O.L. 36 3/4"

**\$400-\$600**



**197.**





200.

**198. Erotic Silver Cane**

20th Century-A sterling nude woman handle, silver collar, mahogany shaft and a horn ferrule-H. 1 1/4" x 1 3/4", O.L. 37 1/2" \$400-\$600

**199. Safari Trophy Cane**

Circa 1930-A warhog tusk, brass attachment collar, horn shaft and a brass ferrule. H. 4 1/2" x 3", O.L. 35 1/2" \$400-\$600

**200. Cloisonné Watch Cane**

Early 20th Century-A beautiful enameled handle, with an ornate early Swiss key wind watch, copper and silver collars, watch chain with original key, ebonized shaft and a metal ferrule. H. 2 1/4" x 2", O.L. 34 1/2" \$800-\$1200



199.



202.

**201. Sterling Dress Cane**

Late 19th Century-A large sterling handle with grapes and leaves, ornate silver collar, ebonized shaft and a horn ferrule-H. 2 1/4" x 2", O.L. 35 1/2" \$400-\$600

**202. Porcelain Dress Cane**

Late 19th Century-A Meissen style handle with a courting scene and heavy gold decoration, gold filled collar, ebony shaft and a brass ferrule-H. 2" x 3 1/4", O.L. 37" \$400-\$600



198.

201.



**203. Chinese Jade Cane**

Early 20th Century-A carved two-color jade handle, silver collar, thick mahogany shaft and a brass ferrule.  
H. 3" x 2", O.L. 36"

**\$500-\$800**



**203.**

**204. Pen and Pencil Cane**

20th Century-A unique elephant handle which unscrews where the two silver collars meet, unusual dual purpose writing instrument within, diamond willow shaft and a bone ferrule-H. 2 1/2" x 4 1/2", O.L. 36 1/2"

**\$400-\$600**



**204.**

**205. Dartmouth University Cane**

Dated 1921-A typical carved Indian with original paint, class autograph shaft and a metal ferrule.

H. 3 1/4" x 1 3/4", O.L. 36"

**\$250-\$350**



**205.**

**206. Horn Musical System Cane**

Circa 1890 - A buffalo handle compartment cane with opening silver top, pitch pipe within the handle, Birmingham hallmarked silver collar and top, exotic wood shaft, and a horn/ iron ferrule.

H.-4" x 1.5" OL.- 35.8"

**\$300-\$500**



**207.**

**207. Food Commodity System Stick**

Late 19th Century-An inspectors cane for taking samples such as grain etc, chip carved horn handle, hallmarked silver collar, wrapped snakeskin shaft and a bi metal ferrule-H. 5" x 1 1/4", O.L. 36"

**\$400-\$600**



**206.**

**208. Smokers System Cane**

Early 20th Century-A brass flip top ashtray mounted atop a bone carve handle which unscrews to keep a single cigarette, silver and bone collar, small leather support under collar, maple shaft and a horn ferrule-H. 1 1/4" x 2 1/4", O.L. 37 1/4"

**\$500-\$700**



**208.**



211.



209.

**209. Elephant Horn Cane**

Circa 1885-A finely carved elephant with two-colored glass eyes and ivory tusk, hallmarked Birmingham silver collar, ebonized shaft and a bi metal ferrule-H. 4 1/4", x 1 1/4", O.L. 33 1/4"

**\$400-\$600**

**210. Crazy Bird and Hat Cane**

20th Century-A carved reindeer antler with Sterling hat and collar, marked silver collar, exotic wood shaft and a silver ferrule-H. 6" x 2 1/2", O.L. 33"

**\$500-\$600**

**211. Folk Art Carved Cane**

Circa 1860-A carved one piece natural branch with two folky faces, twig spur shaft and a metal ferrule-O.L. 34"

**\$400-\$600**

**212. Art Nouveau German Cane**

A hallmarked .800 silver handle, ornate silver collar, ebonized shaft and a horn ferrule-H. 2 3/4" x 3 3/4", O.L. 38"

**\$400-\$600**

**213. Race Horse Dress Cane**

Circa 1925-A signed nickel silver handle, maple crook shaft and a metal ferrule-H. 5" x 4", O.L. 33"

**\$200-\$300**

**214. Bone Dress Cane**

Circa 1865-A German bone handle with brass rosettes-collar-ornate strap holder, ebonized shaft and a spike metal ferrule- H. 6 3/4" x 1 3/4", O.L. 36 1/4"

**\$300-\$500**



212.



210.



213.



214.



**215. Scholars Folk Art Cane**

Late 19th Century-A finely carved one piece exotic wood shaft with three faces and no ferrule-O.L. 36 ¾"

**\$400-\$500**

**216. Bell Bronze Snake Cane**

Late 19th Century-A cast animal and snake ready to fight, fancy plated collar, hardwood shaft and a bone ferrule.

H. 3" x 3", O.L. 37 ½"

**\$300-\$500**

**217. Porcelain Dress Cane**

Circa 1885-A porcelain ball with two hand painted cupids, heavy gold decoration, gilded collar, maple shaft and a brass ferrule-H. 1 ½" x 1 ½", O.L. 37 ½"

**\$500-\$600**

**218. Rangda Bone Cane**

Circa 1930-A finely carved Indian Goddess cane, metal collar, slightly turned exotic wood shaft and a brass ferrule.

H. 3 ¼" x 1 ¼", O.L. 37 ½"

**\$400-\$600**

**219. Amber Dress Cane**

Early 20th Century-An amber sphere with various objects within, carved ivory collar, ebony shaft and no ferrule.

H. 1 ¾" x 1 ¾", O.L. 34 ½"

**\$500-\$1000**

**220. Button Hook Cane**

Early 20th Century-A carved bakelite or lucite parrot with two-colored glass eyes, British hallmarked silver collar, bamboo shaft and a metal ferrule.

H. 3 ¼" x 2 ¾", O.L. 37 ½"

**\$500-\$600**



**215.**

**217.**



**216.**



**218.**



**219.**

**220.**





221.



222.

**221. Bronze Bull Dog Cane**  
 Circa 1935-A unique cast bull dog which is attached to a reindeer antler, brass collar, oak shaft and a bi metal ferrule.  
 H. 5" x 7 1/2", O.L. 38"  
 \$500-\$800

**222. Asian Bone Dress Cane**  
 Early 20th Century-A unique carved handle with see through capabilities in three different places, basket woven animal hair handle attachment, metal collar, mahogany shaft and a bi metal ferrule. H. 2 1/4" x 3 1/2", O.L. 37"  
 \$400-\$600



223.



224.

**223. Bronze Erotic Cane**  
 Circa 1930-A nice original example which is signed but not readable, exotic wood shaft, heavy enough to be a defensive cane and a bi metal ferrule.  
 H. 4" x 2 3/4", O.L. 37"  
 \$500-\$600

**224. Anti-Semitic Folk Cane**  
 Early 20th Century-a carved reindeer handle with two colored glass eyes, plated collar, knotty hardwood shaft and a brass ferrule. H. 4 1/2" x 2 1/2", O.L. 32 3/4"  
 \$400-\$500



225.

**225. Cigarette System Cane**  
 Hallmarked 1931-A carved skull handle, large silver ribbon ferrule, within the cane is an ivory and bone cigarette holder, hardwood shaft with two carved snakes and a bi metal ferrule.  
 H. 4" x 2 1/4", O.L. 35 3/4"  
 \$500-\$700

**226. Silver Dress Cane**

Late 19th Century-A sterling hallmarked high relief handle, ebonized hardwood shaft and no ferrule. H. 6" x ¾", O.L. 34"  
\$250-\$350

**227. Defensive Dog Cane**

Circa 1900-A bronze shepherd's head which has been attached to a barked twig spur and a metal ferrule. H. 2" x 5 ½", O.L. 38 ¾"  
\$300-\$400

**228. Horse/Razor System Cane**

Late 19th Century-An unusual carved horn horse handle with silver bridle and two-colored glass eyes, shaft has a compartment for a straight razor, .800 silver marked collar, scribed and carved pine shaft and a horn ferrule. H. 5 ½" x 3", O.L. 36"  
\$500-\$600

**229. Forestry System Cane**

Late 19th Century-An unusual metered rule with brass and metal attachments to measure the girth of a tree, maple shaft and a metal pike ferrule. O.L. 36 ½"  
\$400-\$600

**230. Robin Hood Defensive Cane**

Late 19th Century-A nickel silver figural handle, engraved white metal collar, snake wood shaft with eyelet and a horn ferrule. H. 2 ¾" x 3 ½", O.L. 33"  
\$300-\$500

**231. Erotic Mermaid Defensive Cane**

Circa 1930-Poseidon bares a mermaid on his shoulder in bronze, gilded gold collar with dents, faux bamboo hardwood shaft and a bi metal ferrule. H. 2 ¾" x 4 ¾", O.L. 35 ½"  
\$400-\$600

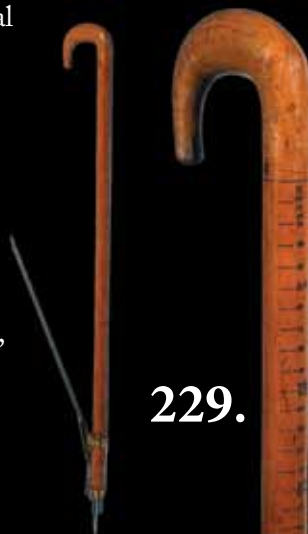
227.

228.



226.

230.



229.

231.







232.



**232. Carved Black Woman Cane**  
Late 19th Century-A nice carving with two color glass eyes, copper and stone necklace, gold metal collar, exotic wood shaft and a horn ferrule-H. 6 1/4" x 1 3/4", O.L. 35"  
**\$350-\$550**

**233. Defensive Erotic Cane**  
Circa 1880-A German silver-plated bronze handle with a nude lady and cherub, natural branch shaft and a spike metal ferrule.  
H. 2 3/4" x 2 1/2", O.L. 35 3/4"  
**\$500-\$600**

**234. Leda and the Swan Erotic Horn Cane**  
Circa 1875-A carved and polished horn handle, white metal collar, twig spur shaft and a metal ferrule.  
H. 2 1/2" x 3 3/4", O.L. 35 1/2"  
**\$500-\$1,000**

**235. Art Nouveau Bronze Cane**  
Mid 20th Century-A defensive bronze handle, brass collar, twig spur shaft and a metal ferrule-H. 2 1/2" x 3 3/4", O.L. 35 1/4"  
**\$250-\$350**

**236. A Pair Erotic Canes**  
Mid 20th Century-One is carved of horn and the other is bronze, both have hardwood shafts and one with a horn ferrule and the other ivory.  
H. Average 2" x 2", Av. Length 36 1/2"  
**\$500-\$700**

**237. Japanese Stag Cane**  
Late 19th Century-A carved stag handle with a large baboon hiding fruit behind his back, metal collar, substantial bamboo shaft and a metal ferrule-H. 2 1/2" x 4 3/4", O.L. 34 3/4"  
**\$600-\$900**



236.



237.



235.

**238. Picnic System Cane**

Circa 1850-A carved horn handle with a mother of pearl disc atop, matching silver collars which unscrew and produce a very unique knife and fork, chip carved shaft and a metal ferrule. H. 4 ½" x 1 ½", O.L. 36 ½"  
**\$600-\$1,000**



238.

**239. Tobacco Pipe System Cane**

Circa 1875-A complete system cane with stem and bowl which doubles as the handle, spotted hardwood shaft and a metal ferrule-H. 2" x 1 ¼", O.L. 34"  
**\$250-\$450**

**240. Cigar Lighter System Stick**

Early 20th Century-A carved and stained wood handle, hallmarked silver collars which when unscrewed produces an early brass cigar lighter, carved maple shaft and a metal ferrule-H. 4 ¼" x 2 ½", O.L. 36 ½"  
**\$500-\$600**



240.

**241. Carved Horn Parrot Cane**

Early 20th Century-Unique carved and polished horn handle with glass eyes, silver metal collar, ebonized shaft and no ferrule-H. 2 ½" x 2", O.L. 35"  
**\$400-\$600**



**242. Fox Antler Cane**

Late 19th Century-A nicely carved stag handle, .800 silver collar, twig spur shaft and a metal ferrule-H. 4 ½" x 2 ¼", O.L. 35"  
**\$300-\$500**



242.

239.



241.







244.

243.



#### 243. Porcelain Suit Case

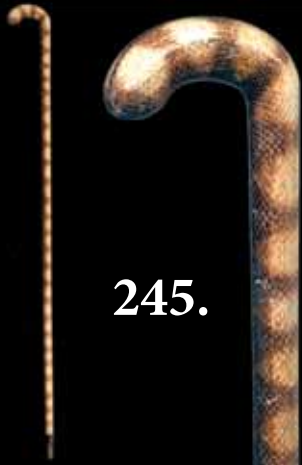
Late 19th Century-Fired and painted porcelain handle, silver metal collar, telescoping brass shaft, snakeskin covered top and a metal ferrule-H. 1 ½" x 2 ¼", O.L. 35 ½"  
\$500-\$1,000

#### 244. A Pair of Victorian Figural Canes

Circa 1875-A pair of silver-plated unique sculptures which have been placed on a hardwood shaft, both with ferrules.  
Largest H. 6" x 2 ½", Av. L. 37 ½"  
\$500-\$800

#### 245. Rattle Snake Skin Cane

Circa 1950-A carved cane which is completely covered with rattle snake skin and a painted wood ferrule.  
O.L. 36"  
\$300-\$400



245.



247.

#### 246. Tuning Fork Cane

Circa 1930-A music teacher or piano tuner's cane with some pyro decoration on the handle, tuning fork mounted in handle, maple shaft and no ferrule-O.L. 35"  
\$300-\$400

#### 247. A Defensive Race Horse Cane

Late 19th Century-A nicely cast jockey and horse which is silver-plate on bronze, from a German Noble's Estate, exotic wood shaft and a horn ferrule.  
H. 3" x 3 ½", O.L. 37 ½"  
\$500-\$800



248.

246.



#### 248. Art Nouveau Silver Cane

Circa 1890-A German Hallmarked .800 silver handle, hardwood shaft and a horn ferrule.  
H. 4 ¼" x 1 ¾", O.L. 35 ½"  
\$400-\$600



**249. Deer Hoof Dress Cane**

Circa 1865-A mounted hoof with an ivory shoe, brass silver-plated buckle collar, twig spur shaft and a metal ferrule-H. 5" x 2", O.L. 34"

**\$200-\$400**

**250. Erotic Defensive Cane**

Circa 1900-A German silver cast handle, German silver collar, ebonized shaft and a metal ferrule.

H. 2 3/4" x 2 3/4", O.L. 34 3/4"

**\$400-\$600**

**251. Anti-Semitic Stag Cane**

Early 20th Century-A carved reindeer antler, ornate silver collar, ebonized shaft and a horn ferrule.

H. 3" x 3 3/4", O.L. 36"

**\$300-\$500**

**252. Scottish Ram's Horn Cane**

Mid 20th Century-A highly polished horn cane signed and number, horn collar, hazel wood with bark shaft and a horn ferrule-H. 5 1/2" x 5", O.L. 36 1/3"

**\$300-\$500**

**253. Bronze Dante Defensive Cane**

Circa 1935-A heavy bronze handle, bronze collar, thick oak shaft and a horn ferrule-H. 4" x 2", O.L. 36"

**\$400-\$600**

**254. Veterinarian's Occupational Cane**

Circa 1900-A stylized carved thick maple shaft with dog and snake with some remaining paint, painted pendant with initials on shaft and metal ferrule-H. 6" x 4 1/2", O.L. 36 1/2"

**\$400-\$600**



**251.**



**252.**



**250.**



**253.**



**249.**



**254.**



255.

**255. Victorian Stag Folk Cane**

Circa 1875-A beautifully carved lady on a well patinaed rain deer antler, white metal collar, thick mahogany shaft and a horn ferrule. H. 9" x 3 1/2", O.L. 36 1/2"

**\$400-\$700**

**256. Asian Fishing Cane**

Late 19th Century-This is the finest example of a fishing cane that we have ever offered, dragon decorated silver-plated box atop for the hooks and accessories, an 81.2" telescoping fishing pole is within the shaft, massive bamboo shaft and a metal ferrule-H. 2" x 3", O.L. 43"

**\$500-\$1,000**



256.

**257. Asian Skull Cane**

Circa 1890-A one piece exotic wood shaft, mother of pearl snake entwined, skull above the snake, silver letters atop and a stag ferrule-O.L. 38"

**\$500-\$700**

**258. French Defensive Cane**

Modern Reproduction-A modern reproduction of one of the French defensive canes, metal collar, ebonized shaft and a horn ferrule-O.L. 36"

**\$400-\$600**

257.



258.

260.

259. A group of Various Canes

260. A group of Various Canes

261. A group of Various Canes

262. A group of Various Canes



259.

261.



262.





265.



263. A group of Various Canes

264. A group of Various Canes

265. A group of Various Canes

263.



264.





[WWW.AUCTIONAUCTION.COM](http://WWW.AUCTIONAUCTION.COM)

Kimball M. Sterling, Inc. (TFL-1915)  
125 West Market Street  
Johnson City, Tennessee 37601  
kimballsterling @ earthlink.net  
423.928.1471

Member National Auctioneers Association  
© Copyright 2011 Kimball M. Sterling, Inc.

Photography by James Price

Catalog Design by KT Design, LLC  
[www.kristaft.com](http://www.kristaft.com)