

SATURDAY  
APRIL 16<sup>TH</sup>

11:00 A.M. EST

PREVIEW - FRIDAY, APRIL 15<sup>TH</sup>

12:00 - 5:00 P.M. EST

SATURDAY, APRIL 16<sup>TH</sup>

10:00 A.M. EST

OR BY APPOINTMENT ANYTIME BEFORE  
THE AUCTION



KIMBALL & VICTORIA STERLING  
PRESENT A

*Spring*  
ANTIQUÉ CANE  
AUCTION

Kimball Sterling, Inc.

[www.auctionauction.com](http://www.auctionauction.com)

# TERMS & CONDITIONS

1. Cash or check. A 15% buyers' premium will be added to the hammer price as part of the sale price for in-house, phone, and absentee bidders. We reserved the right to hold purchases until the buyers checks clears if buyer is not known by us. Bank letter of credit is acceptable. A 20% buyers fee will be charged to internet bidders.
2. Mail or phone bids are accepted; the firm may require a deposit.
3. Kimball M. Sterling, Inc. has endeavored to catalog and describe the property correctly. All property is sold as is and neither the auction company nor the consignor will be responsible for descriptions, genuineness, provenance or condition of the property. No statement in the catalog made orally at the sale or otherwise shall be deemed to be a warranty, representation, or an assumption of liability.
4. In the event of any dispute between bidders, the auctioneer shall have total discretion to determine the successful bidder, in which his determination shall be final or to re-offer and resale the article in dispute. Title of the item or items purchased by the bidder will pass at the fall of the gavel and declaration of bidder. This is not an approval auction. All measurements are approximate.
5. Principal auctioneer: Kimball M. Sterling #2467.  
B. Elizabeth Sterling, auctioneer # 5757. Firm Kimball M Sterling Inc. TFL-1915
6. Bidders may bid live on the Internet by visiting <http://www.auctionauction.com> You may also view the auction at this site and bid by phone.
7. Communications:  
Telephone 423-928-1471.  
Fax 423-928-2816.  
Cellular 423-773-4073, 423-773-4072.  
Email [kimballsterling@earthlink.net](mailto:kimballsterling@earthlink.net)
8. Worldwide shipping available. International sales which are protected by C.I.T.E.S. permits can also be arranged. Estimated bidders cost per cane is \$255.00 for permits and inspections plus the shipping cost. A permit may also be required by your country . Buyers pay for shipping, packing and insurance from United states Postal Service.
9. Kimball M. Sterling, Inc. will not be held responsible for bids received on the day of the auction, unexecuted absentee bids, phone bidders not contacted or slow Internet bids. Although we do attempt to get all bids executed problems do occur. There will be no recourse from the bidder. We will not be responsible for items left on our location for over 30 days.
10. Sale will be conducted at 125 West Market Street, Johnson City, Tennessee. 37604. Announcements day of the sale take precedence over pre-sale advertising. Any litigation that pertains to this auction will be conducted in the county of Washington in Tennessee and is agreed upon by registering for this auction.
11. Airport is the Tri-Cities Airport, which is approximately 20 miles from the gallery. Internet catalog and live bidding available at [www.auctionauction.com](http://www.auctionauction.com) Best Western Hotel: 423-282-2126. A very fine hotel which offers Sterling Auction a discount rate is the Carnegie Hotel 1216 W State of Franklin Rd, (423) 979-6400.
12. Please call for condition report on sale lots or email us. We do send out multiple photos by email of any lot in the auction .By registering for this auction you accept the terms and give Kimball M. Sterling auctions the right to charge your credit card on file for purchases and shipping, which you have entered on your registration.
13. Parking service is free.





SATURDAY  
APRIL 16<sup>TH</sup>

11:00 A.M. EST

PREVIEW - FRIDAY, APRIL 15TH

12:00 - 5:00 P.M. EST

SATURDAY, APRIL 16TH

10:00 A.M. EST

OR BY APPOINTMENT  
ANYTIME BEFORE  
THE AUCTION



KIMBALL & VICTORIA STERLING  
PRESENT A

*Spring*  
ANTIQUÉ CANE  
AUCTION

Kimball M. Sterling Auction Gallery  
125 West Market Street  
Johnson City, Tennessee 37604  
kimballsterling@earthlink.net  
423.928.1471

*Two Time Winner of Best  
of Show from the  
National Auctioneers  
Association*

Live on the internet at  
LIVEAUCTIONEERS.COM

www.auctionauction.com



**1. Ivory and Silver Pique Dress Cane**

Late 17th Century-An original pique handle with carved eyelets, scalloped coin silver collar, thick ebony shaft and a 3" bi-metal ferrule. Early damage atop but it keeps its integrity.-H. 3 3/4" x 1 3/4"; O.L. 37 1/2"

**\$1,500-\$2,500**

**2. Confederate Soldier Folk Cane**

Circa 1870-A very nicely carved one piece handle with two color glass eyes, the bill of the kewpie has early damage and parts missing, ivory collar, twig spur shaft with ivory inserts, and a large brass ferrule.-H. 3 1/2" x 2 1/4"; O.L. 38"

**\$300-\$500**

**3. Ivory and Gold Dog Dress Cane**

Circa 1900-A carved ivory dog with two color glass eyes, belt buckle 14 karat dog collar, 14 karat monogram shaft collar, signed "Watson Brothers"; exotic wood shaft and a bi-metal ferrule.-H. 4" x 4 1/4"; O.L. 34 1/2"

**\$600-\$900**

**4. Courtesan Ivory Sword Cane**

Mid 19th Century-A carved ivory tiger handle, ornate gold filled collar, push button locking mechanism with a 9" four sided engraved blade, malacca shaft and a brass ferrule.-H. 2 1/4" x 4 1/2"; O.L. 34"

**\$500-\$800**

**5. Carved Amber Dog Dress Cane**

Art Deco-The carved head has ivory and horn eyes, ornate signed German silver collar, hardwood shaft and a silver ferrule.-H. 1 1/2" x 1 1/2"; O.L. 34 1/2"

**\$400-\$700**



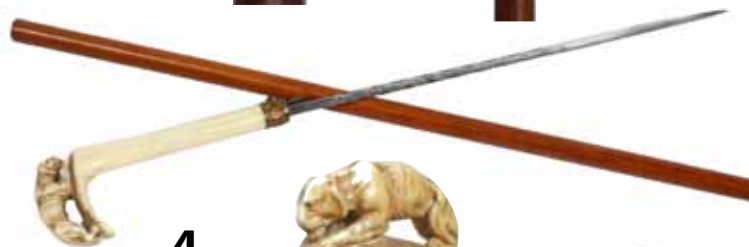
1.



2.



3.



4.



5.







7.

**6. Ivory Fist and Snake Sword Cane**

Circa 1870-A nicely carved fist and snake, two coin silver collars, a four sided 27" blade, faux bamboo partridge wood shaft and a metal ferrule-H. 1 3/4" x 1 1/2", O.L. 34"  
**\$500-\$1,000**

**7. Ivory Thousand Face Dress Cane**

Early 20th Century-A fine example of this genre, British Hallmarked coin silver collar (J.H., and the date mark for 1911), exotic snake wood shaft and a brass ferrule-H. 4" x 1", O.L. 36"  
**\$700-\$1,000**

**8. Art Deco Dress Cane Collection**

Circa 1930-These three examples include one triangle cane and two square canes, two with gold collars and one with a silver collar, ebonized shafts and horn ferrules-Average size of handle is 1" x 1", and average length is 35"  
**\$700-\$1,000**

**9. Nautical Going Ashore Cane**

Mid 18th Century-A whimsical example with an ivory handle which has a 6 pointed star atop and inlaid baleen, small silver collar, the shaft is an Oryx antelope horn which has ivory inlaid where the shaft meets the handle, and it a brass ferrule-H. 1 1/2" x 2", O.L. 34"  
**\$1,200-\$1,800**

**10. Carved Dog Dress Cane**

Late 19th Century-A carved ivory dog with two color glass eyes, silver belt buckle collar, tiger maple shaft and a shell casing ferrule-H. 3" x 2 1/2", O.L. 36"  
**\$400-\$600**



6.

8.



9.



10.

**11. William Cooper's Sword Cane**

Circa 1850-Cooper also known as "Vanderdecken" was a British yachtsman who wrote many books about the art of yachting. The silver handle has an engraving atop with the words "serve, love, and" and on the side of the handle William Cooper's name is engraved, there is an Ellam, London silver cartouche, a coin silver collar with the name "Vanderdecken" engraved, the blade is a two sided 27" blade, hardwood with early worm hole shaft and a metal ferrule. The provenance on this cane is passed to us from the consigner, but after viewing the cane, it speaks for itself.-H. 6" x 2", O.L. 35"

**\$1,200-\$1,800**

**12. Silver and Gold Dress Cane**

Dated 1885-A very unique, handmade silver and gold handle, stepped bamboo shaft and a very unique silver and gold ferrule-H. 1 3/4" x 1", O.L. 34 1/2"

**\$400-\$600**

**13. Samurai Style Dress Cane**

Circa 1875-This cane is in the style of a Samurai sword with a gold filled handle, large gold filled monogram attached, flattened malacca shaft and a bi-metal 2 1/2" ferrule-H. 1 1/4" x 1/2", O.L. 36"

**\$400-600**

**14. Brig Sterling Sword Cane**

Hallmarked 1906-A plainly hallmarked and signed handle and collar, four-sided 28" blade signed "T. Brigs and Sons", bamboo shaft and a copper ferrule-H. 1 1/4" x 1 3/4", O.L. 37"

**\$600-\$900**

11.



12.



13.



14.





17.



15.



18.



16.



19.

**15. Sterling Secret Compartment Dress Cane**  
 Early 20th Century-A signed sterling handle with a hinged end cap, monogram from the American maker "P. H. Locklin and Sons", exotic wood shaft and a bi-metal ferrule-H. 5" x 4", O.L. 36 1/2"  
**\$500-\$800**

**16. Oryx and Silver Dress Cane**  
 Victorian-A coin silver end cap which is attached to the full horn and it has a brass ferrule (horn has split on one side near the top)-H. 2" x 1 1/4", O.L. 34"  
**\$300-\$400**

**17. Tiger's Eye Dress Cane**  
 Early 20th Century-A very nice specimen with rolled gold mounts and collar, snake wood shaft and a horn ferrule-H. 1 3/4" x 1 3/4", O.L. 34"  
**\$800-\$1,200**

**18. Carved Dog Cane**  
 Circa 1880-A very nicely carved handle which is attached to an octagonal tiger maple shaft and a bi-metal ferrule-H. 6" x 3 1/2", O.L. 36"  
**\$400-\$600**

**19. Wood Character Cane**  
 Early 20th Century-A carved wooden head which could be anybody but has to be somebody, hardwood shaft and no ferrule-H. 1 3/4" x 3", O.L. 37"  
**\$300-\$400**



**20. Guilloche Dress Cane**

Early 20th Century-The handle has a silver disc atop and a solid silver collar, some damage to the enamel, ebonized shaft and a brass ferrule-H. 2 1/2" x 1 3/4", O.L. 36"

**\$300-\$400**

**21. Presentation Dress Cane**

Dated 1886-A very ornate, massive layered gold dress handle in excellent condition, ebonized hardwood shaft, monogrammed "To Father from his son Abe 1886", and a bi-metal ferrule-H. 2 1/2" x 1 1/2", O.L. 36"

**\$600-\$700**

**22. Half Sword Cane**

Circa 1865-This rare and extremely difficult to acquire sword cane has an ornate English silver handle, a rattan shaft which separates in the center to expose a 4 sided 10" embellished blade, which is in very fine condition and has its original brass ferrule-H. 2" x 1 3/4", O.L. 35"

**\$1,600-\$1,800**

**23. Decorative Knobkerrie Cane**

Late 19th Century-A heavy silver handle well modeled and chased in the shape of an "Old Archer", beautiful engraved silver collar, rosewood shaft and a red horn ferrule-H. 3 3/4" x 2 1/4", O.L. 37 1/4"

**\$1,200-\$1,500**



21.



22.



23.



20.



24.



**24. French Jade Dress Cane**

Circa 1880-A fabulous 1.5" diameter jade ball with a surrounding of blue sapphires in gold mounts, tested 18 karat gold collar, ebony shaft and a 1" bi-metal ferrule, the condition is excellent and the combination of the jade and sapphires make a stunning presentation.-O.L. 33 1/2'

**\$1,700-\$2,000**

25.



**25. Guilloche Viennese Dress Cane**

Circa 1890-The white guilloche has hand painted bouquets of roses in a gold filigree that surrounds the handle, atop the handle is a royal amethyst surrounded by gold, the handle terminates to a 1" sculptured silver band and this handle is truly the work of a master artisan's elegant hand. The variegated ebony shaft has a bi-metal original ferrule which is in mint condition due to canes of this rarity very rarely touch the ground.-H. 2 1/2" x 1", O.L. 37"

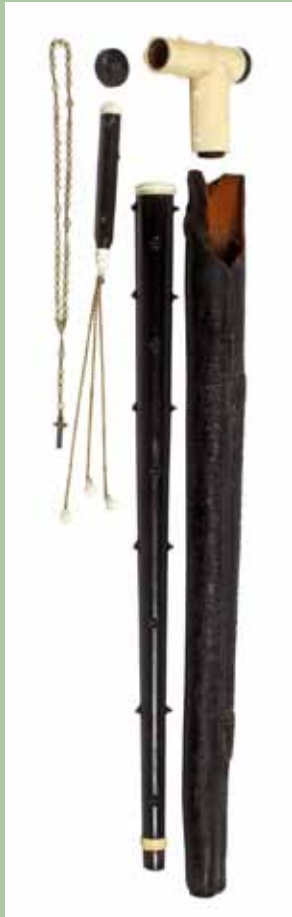
**\$2,700-\$3,200**



## 26. Opus Dei Penitents Cane

Mid 19th Century-Massive ivory handle with sharp thorn like projections which would cause anyone pain to grip it in any direction, massive hardwood shaft with thorn like projections, one end of the handle holds a bone rosary, and when the massive ivory handle is unscrewed from the shaft it discloses a flail. The flail has three ivory thorn balls with ivory embellishments which attach it to the handle. The containers within the shaft and the handle are velvet lined. This cane was used as a symbol of authority for a highly placed person in a religious order which practiced flagellation. These canes have been known to come out of France and Germany and this is a complete example even down to the elephant's hide scabbard and elephant ivory ring atop the ferrule.-H. 6" x 5" x 1 3/4", O.L. 37 1/2"

**\$15,000-\$20,000**



26.





27.



29.



28.



30.



32.



31.



### 27. Ivory Gator Cane

Late 19th Century-An ivory gator handle which is detachable from the shaft, inscribed ornate gold filled collar, McLeod style carving, rich malacca shaft and an original bi-metal ferrule-H. 4" x 1 1/2", O.L. 35" \$800-\$1,200

### 28. Ivory Dog Glove Holder

Circa 1925-A British glove holder cane with two color glass eyes and ivory ears, coin silver hallmarked collar, dark malacca shaft and a horn ferrule-H. 1 3/4" x 2 1/2", O.L. 36" \$300-\$500

### 29. Ivory Sword Cane

Circa 1880-A massive ivory sword cane which handle is inscribed, "C. Terrell, H. M. 32 Drt.", inlaid mother of pearl and horn inner handle, 14 1/2" three sided blued and gilded blade, large ivory collar which attaches to a 1 3/8" massive malacca shaft and an original, large brass ferrule. The dagger handle screws into the collar.-H. 2" x 1", O.L. 35 1/2" \$1,200-\$1,800

### 30. Candle Snuffer Cane

Circa 1900-A unique system stick with a bell bronze handle, attached plaque "Compliments of Enterprise B & P Co., Cinti, O.," exotic wood shaft and a bi-metal ferrule-H. 3 1/2" x 1 1/2", O.L. 34" \$200-\$400

### 31. Silver and Ivory Dress Cane

Circa 1875-Fine overlaid silver ivory handle, ornate silver collar, ebony shaft and a bi-metal ferrule-H. 5" x 1 3/4", O.L. 34 3/4" \$300-\$500

### 32. Tiffany 18 Karat Gold Dress Cane

Early 20th Century-A signed "Tiffany & Co., 9791 Maker's 18 kt Gold", removable handle, exotic wood shaft and a horn ferrule-H. 1" x 2", O.L. 36" \$1,000-\$1,500



**33. William Jennings Bryan Cane**

Late 19th Century-A nice example in fine condition, oak shaft and a bi-metal ferrule-H. 3 1/2" x 1 3/4", O.L. 35 1/2"  
**\$200-\$300**



**33.**

**34. Ivory Ram Dress Cane**

Dated 1901-Carved ivory handle, ornate sterling collar with the name "Anthony Koars", exceptional malacca shaft and a brass ferrule-H. 3 3/4" x 1 1/2", O.L. 33 1/2"  
**\$300-\$500**



**34.**

**35. Defensive Cane**

Early 20th Century-Small horn handle, lanyard with a brass weight weapon, small ebony shaft and a horn ferrule-H. 1 3/4" x 3/4", O.L. 32 1/2"  
**\$200-\$300**

**35.**



**37.**

**36. Chicken Dress Cane**

Early 20th Century-A finely cast gold plated chicken with ruby colored eyes, nice malacca shaft and a metal ferrule-H. 2 1/4" x 1 1/2", O.L. 35 1/2"  
**\$300-\$500**



**36.**

**37. Mourning Cane**

Circa 1900-A very unusual engine turned signed and hallmarked sterling handle with a guilloche top which has an inlaid gold basket and various flowers, ebony shaft, and a bi-metal bullet ferrule-H. 1" x 1 1/2", O.L. 35 1/2"  
**\$300-\$500**



**39.**

**38. Damascene Dress Cane**

Late 19th Century-Extraordinary damascene work, rich malacca shaft and an ivory ferrule-H. 2 3/4" x 2 1/4", O.L. 32"  
**\$400-\$500**



**38.**

**39. Carved Ivory Elf Cane**

Late 19th Century-The elf is carved setting under a large mushroom, ornate gold filled collar, inlaid mother of pearl (one small piece missing) exotic wood shaft and a metal ferrule-H. 2 3/4" x 7/8", O.L. 36"  
**\$400-\$600**





**40.**

**40. English Ivory Donkey Cane**

19th Century-Substantial ivory head, silver collar engraved J. Youd, superb malacca shaft and a metal ferrule. Fine quality and great age patina. This cane is probably based on Queen Victoria's donkey Jocko, which pulled her chair around the grounds of Windsor castle. Her son the Prince of Wales later Edward VII had similar sticks commissioned in England and Austria around 1890. Reference can be found in the great book "Treen and other bygones by Edward Pinto"-H. 5 1/4 x 2 3/4", O.L. 34 1/4"

**\$2,500-\$3,500**

**41. Ivory /Ebony Dog Cane**

Circa 1890-A nicely carved ivory and ebony dog head with two color glass eyes, gilt collar, ebony shaft and a metal ferrule. Original condition and patina-H. 4" x 1 3/4", O.L. 35 1/4"

**\$800-\$1,200**



**42.**

**42. Ivory Horses Cane**

English 19th Century-Vertical ivory handle carved with a panel showing four horses in open grassland, reeded top and beaded framing. Makassar ebony shaft and a metal ferrule.-H. 5" x 1 1/4", O.L. 34 1/4"

**\$1,500-\$2,500**

**41.**





**43. Erotic Ivory Cane**

French, late 19th Century-A sizeable ivory handle with a Pan embracing a naked Venus holding a basket of grapes on her head, malacca shaft and worn out ferrule. The depiction is well rendered with a magnificent body to the Venus and a lecherous expression to the Pan. It is ripe with symbolism and possibly meant to be an allegorical exaltation of love and wine. -H-5" x 1 1/2", O.L. 36 1/2"

**\$6,000-\$9,000**

**44. French Ivory Dress Cane**

Late 19th Century-Ivory allegorical spring basket with flowers, jeweled silver ring collar, ebony shaft and an ivory ferrule. H. 2 1/4" x 2", O.L. 38"

**\$1,500-\$2,500**

**45. Amazing ivory Erotic Cane**

Anglo-Colonial around 1860-Unscrewing ivory top with red painted woman genitalia facing the trembling green colored, erected one of a man. H. 1 3/4" x 1 3/4", O.L. 35 3/4"

**\$3,000-\$4,000**







46.



**46. French Erotic Micro Carved Ivory Cane**

Late 19th Century-An L-shaped carved ivory handle of a nude Venus ostentatiously exposing her pulchritude, ebony shaft and a horn ferrule. H. 4 x 3 1/4", O.L.35"  
**\$4,000-\$6,000**

**47. Erotic Folk Art Cane**

Viennese 1900-Fashioned of a gnarled branch with a finely carved beauty in the knob suggesting her female intimate part. Well aged with a dark patina and metal ferrule-H. 3 1/2" x 2 1/4", O.L. 35 1/2"  
**\$1,500-\$2,500**

**48. Fancy Ivory Rabbit Cane**

Circa 1880-A nicely carved rabbit in the grass, personalized brass collar, malacca shaft and a metal ferrule.-H. 4 1/4" x 3 1/4", O.L. 35 1/2"  
**\$2,000-\$3,000**



48.

47.



**49. Erotic Stanhope Cane**

Circa 1885-A single shaved blackthorn branch with an Native American Chief with glass eyes, the handle has four different French nude Stanhope's, full frontal nudes and also rear views, two are in perfect condition and the others have some fading-O.L. 34 3/4" \$1,500-\$2,500

**50. Ivory Erotic Cane**

French, 19th Century-Elongated ivory knob with faceted stem and widening circular top engraved with a humorous depiction of a male member. Malacca shaft and a bone ferrule. H. 4 1/2" x 1 3/4", O.L. 32" \$2,000-\$3,000

**51. Early Dual Purpose Cane**

French, 18th Century-Reclined siren silver handle set with red coral on a malacca shaft with Baroque silver collar and a metal ferrule. The hinged head unfolds to reveal a snuff container. Original condition-H. 4" x 1 1/4", O.L. 36 3/4" \$1,500-\$2,000

**52. Fine Dress Cane**

French, 19th Century-A well proportioned and matt gilt knob with a widening round top decorated in the Empire style, deep black ebony shaft and a horn ferrule. Marked FIX-H 2" x 1 3/4", O.L. 37 1/2" \$800-\$1,200

52.



50.



49.

51.







55.



53.

**53. French Theater Cane**

Second half of the 19th Century- An ivory handle with a rose on a cylindrical stem, rosé gold ring collar and a malacca shaft with a metal ferrule. H. 5 3/4" x 2", O.L. 37"

**\$1,000-\$1,600**

**54. Hardstone Dress Cane**

Circa 1910-Rock crystal handle with a beautiful natural frozen structure, ebony shaft, silver collar and horn ferrule-H. 2 3/4" x 1", O.L. 38 1/4"

**\$600-\$800**

**55. Ivory Fantasy Hog Cane**

19th Century-A finely carved elephant ivory fantasy visions of a "sausaged" hog in the amusing Dickensian taste. Wild cherry branch shaft, silver collar and iron ferrule. -L. 4 1/2" x 1 1/2", O.L. 34 1/2"

**\$1,800-\$2,500**

54.



**56. Jasper Dress Cane**

Early 20th Century-Polished ball handle with natural blood red color, rosewood shaft, grooved metal collar and a horn ferrule-H. 1 1/2" x 1 1/2", O.L. 34 1/2"

**\$400-\$600**

57.



**57. Large German Ivory Fish Cane**

Ca. 1890-Carved ivory pike on waves done in a master's hand, ebony shaft, silver collar marked 800 in a half-moon and a white metal ferrule.-H. 4 3/4" x 2", O.L. 34"

**\$2,000-\$3,000**

56.





### 58. Scrimshaw Marine Cane

Dated 1842-Scrimshaw whale tooth knob with a detailed whaling panel, monogrammed LS and inscribed Ship Rochester on an ebony shaft with brass ferrule in original condition. A tooth whale with an identical reference in the Mystic Seaport Museum, published on pages 35 & 36 in Richard C. Malley's book *Graven by the fishermen themselves*, helps the cane's identification and makes of it a traceable, singular item. The description of the tooth in the book reads: "A remarkable tooth was carved by a crewman aboard the Rochester in 1842. There is no mistaking the identity of this, a sperm whale whose gaping mouth is formed by the carved butt end of the tooth. Carved whale ivory flukes are attached to the tip of the tooth by a band of baleen or horn. The top of the piece is marked "SHIP ROCHESTER" and records that vessel's visits to the Seychelles Islands in the Indian Ocean, Rarotonga in the Cook Islands northeast of New Zealand, Peru, and Valparaiso, Chile. This tooth was previously believed to be American, but apparently there was no U.S. whaler by this name active in 1842. Research indicates, however, that the London firm of Hill & Co. had a 393-ton whaler Rochester in the South Pacific at this time; and this unusual tooth is quite possibly the inspired handiwork of one of her crew-H. 2 1/2 x 1 1/2", O.L. 35in.

**\$3,000-\$4,000**

### 59. Physician Ivory Cane

England 19th Century-A tall and tapering ivory handle carved with a coiled snake, malacca shaft and an ivory ferrule. High relief .-H. 8 1/2" x 3/4", O.L. 35 3/4"

**\$1,200-\$1,800**



**58.**



**59.**

61.



60.



63.



62.



**60. Animals Folk Art Cane**

Early 20th Century-Hardwood L-handle with a deep detailed coiled snake, frog and grasshopper, oak branch shaft with a metal ferrule. -H. 7 1/2" x 5 3/4", O.L. 35 3/4" \$400-\$800

**61. Fabergé Style Figural Hardstone Cane**

Russian 1900-Kascholong milky white opal little bear, silver laurel leaf collar, real malacca shaft with eyelets and a metal ferrule. Exceedingly rare and intact-H2 1/4" x 2 1/4", O.L. 36 1/4" \$2,500-\$3,500

**62. Viennese Nephrite Dress Cane**

Circa 1910-A Spinach green jade in an elongated, plain and fluting shape with a round top, gilt collar, an ebony shaft and a brass ferrule-H 3 3/4" x 3/4", O.L. 33 1/4" \$500-\$800

**63. Ivory Piqué Cane**

C. 1695-An original and early English cane with large ivory piqué handle, original malacca and a metal ferrule-H3 3/4" x 1 1/2", O.L. 36" \$1,500-\$2,000

**64. Persian Mullah Cane**

Mid 19th Century-Entirely covered with dense metal and ivory micro mosaics building geometrical Oriental patterns-H. 5 3/4" x 4 1/4", O.L. 34 1/2" \$600-\$800

**65. Ivory Piqué Pomander Cane**

English 18th Century-Sizeable ivory handle with fine piqué decoration, original malacca with a metal collar and matching ferrule. The handle unscrews to show a deep cavity for the snuff-H. 4 1/4" x 1 1/2", O.L. 37" \$1,500-\$2,000

64.



65.





**66. English Ivory Memento Mori**

Victorian, mid-19th Century-A substantial and well carved ivory human skull ,pepper bamboo shaft , white metal collar and iron ferrule. -H. 3 1/2" x 2 1/2", O.L. 36 1/4"  
**\$1,500-\$2,500**



**66.**

**67. Staghorn Viennese Cane**

19th Century-A carved portrait of a man with an exaggerated long nose wearing a square monocle and hat on a stepped partridge shaft with silver collar. -H. 3 3/4" x 3 1/4", O.L. 34 1/2"  
**\$800-\$1,500**



**67.**

**68. Mephistopheles Ivory Dress Cane**

French 19th Century-Ivory crook handle carved with the symptomatic horn face, applied 18 karat gold initials, ebony shaft and a ivory ferrule. Outstanding quality.-H. 4 1/4" x 3 1/2", O.L. 36 1/2"  
**\$1,500-\$2,200**



**68.**

**69. Allegorical Ivory Cane**

Circa 1850 - Massive ivory head of Dante Alighieri with his trademark cowl and wreath. Full bark malacca ,turned ivory collar and a metal ferrule. -H. 3 1/4" x 2 1/4", O.L. 37"  
**\$1,200-\$1,800**



**69.**

**70. English Ivory Owl Cane**

Late 19th Century-Well carved, large and beautiful nocturnal bird with a prey in its claws, pepperwood shaft , white metal collar and ferrule.-H. 3 1/2" x 1 3/4", O.L. 37"  
**\$1,600-\$2,000**



**70.**

**71. Opal Dress Cane**

Circa 1910-A hardstone knob which seems to be a boulder opal , gilt collar, a snakewood shaft and a horn ferrule-H 3" x 1 1/4", O.L. 37"  
**\$500-\$800**



**71.**



72.

73.

**72. Brigg Sword Cane**

Late 19th Century-Grooved silver cap, ebony shaft and a horn ferrule. There is an 11" square, jeweled and etched Brigg and 555 triple five blade with a friction lock. Mint condition-H. 1 1/4" x 1"; O.L. 38" \$2,000-\$3,000

**73. Flick Stick Cane**

Mid 19th Century-A black thorn branch with an ejecting 6 1/4" steel, pike blade with twin locking feathers and white metal cover. Fine condition and perfectly working-O.L. 35" \$1,000-\$1,500

**74. Pietradura and Ivory Knob Cane**

C. 1860-Four pigeons on an urn which are done in a great Italian style, rosewood shaft and a horn ferrule. The decoration is put together with hundreds of brightly colored glass rods and semi-precious stones, The handle was probably made in a custom Florentine workshop. H. 1 3/4" x 1 1/4"; OL. 36 1/2" \$1,200-\$1,800

74.



75.



**75. English Victorian Memento Mori**

Mid-19th Century-An ivory human skull on four bones and snake, hardwood shaft with metal collar and worn out ferrule-H. 4" x 1"; O.L. 33 3/4" \$1,200-\$1,800



**76. Flute cane**

European 19th Century-Fashioned of sound vibrating maple wood and topped by a plain turned, unscrewing knob with an ebonized black finish. The flute shaft with six holes and one brass key breaks in three sections with well adjusted reinforcing horn collars. -H 1 3/4" x 1 1/4", O.L. 35 3/4"

**\$2,000-\$3,000**

**77. German Dress Cane**

Late 19th Century-A large Opera shaped .800 silver handle chased in the Revival taste, engraved initials and C. Feucht Neufs, ebony shaft and a horn ferrule. -H. 4 1/2" x 2 3/4", O.L. 38"

**\$600-\$800**

**78. Ivory Dog Cane**

19th Century-Well carved substantial ivory handle, ebony shaft and staghorn ferrule. Gracious flair and unusual fine quality and condition.-H. 4" x 2", O.L. 1/2" x 2", O.L. 37 1/2"

**\$2,000-\$3,000**

**79. Viennese Silver Dress Cane**

Ca. 1890- A large Derby .800 silver handle chased with different panels of flowers and Baroque scrolls , ebonized hardwood shaft and a horn ferrule.-H. 4" x 3", O.L. 36 3/4"

**\$500-\$600**



**78.**



**76.**

**77.**



**79.**



80.

**80. Elephant Ivory Cane**

Hallmarked London 1897-Large ivory handle with a stylized elephant head with glass eyes, engraved silver collar with British hallmarks, full bark malacca shaft and a metal ferrule.-H. 4" x 2", O.L. 37  
**\$2,000-\$3,000**

83.



84.



**81. Victorian Dress Cane**

Ca. 1870-A straight handle with ball and stem entirely covered with faceted steel beads and faceted steel round and angular cabochons. Ebony shaft and a horn ferrule.-H 3 1/4" x 1 3/4", O.L. 38 1/2"  
**\$800-\$1,200**

**82. KPM Berlin Porcelain Dress Cane**

Ca. 1880-Straight porcelain, painted scene in the Symbolist's taste, widening Tula silver knob and matching collars, rosewood shaft and a horn ferrule.-H. 4" x 1 1/4", O.L. 38 1/4"  
**\$600-\$800**

**83. Ivory Dress Cane**

Circa 1890-The elephant ivory of ergonomic shape has two stylized leaf panels, the bottom one with a twist rope, chased silver collar, ebony shaft and an ivory ferrule.-H. 4 3/4" x 1 1/4", O.L. 38 1/2"  
**\$500-\$900**

**84. Lapis Lazuli Dress Cane**

Early 20th Century-Blue lapis lazuli vertically stretching, silver collar, fruitwood shaft and a horn ferrule.-H. 4" x 3/4", O.L. 36 1/4"  
**\$500-\$800**

81.



82.





**85. English Victorian Ivory Cane**

Late 19th Century- Opera handle with a human skull and crossed bones . Engine turned silver collar with obscured hallmarks, ebony shaft and worn out ferrule. Superb quality, maybe Free Mason or Memento Mori-H. 5 3/4" x 1 3/4", O.L. 32 1/4"

**\$1,800-\$2,500**

**86. Viennese Dress Cane**

Late 19th Century-A large L-shaped and richly ornate silver handle in the taste of the Wiener Werkstätte, ebony shaft and spike metal ferrule- Austrian Hallmarks . H.3 3/4" x 3 1/4", O.L. 34 3/4"

**\$500-\$800**

**87. Ivory Horse Cane**

19th Century-Ivory handle , full bark malacca shaft, plain silver collar and a metal ferrule-H. 4 1/2" x 3 1/4", O.L. 35 1/4"

**\$1,400-\$2,000**

**88. Enamel dress Cane**

19th Century-Oval guilloche and painted enamel knob with ivory and silver collars on an oval tortoiseshell stem , oval snakewood shaft with ivory collar and ivory ferrule. -H 8 1/2" x 1 1/2", O.L. 32"

**\$1,000-\$1,600**

**89. German Day Cane**

Late 19th Century-A large L-shaped .800 silver handle well chased with a knotty pattern engraved 1880-1905, ebony shaft and a horn ferrule.-H. 3 3/4" x 2 1/2", O.L. 36 1/2"

**\$500-\$800**

**90. English Ivory Day Cane**

19th Century-An ivory handle carved with a long horned prone stag, malacca shaft , silver collar and a metal ferrule-H. 4 1/2" x 1 1/2", O.L. 33 1/2"

**\$800-\$1,200**

87.



89.



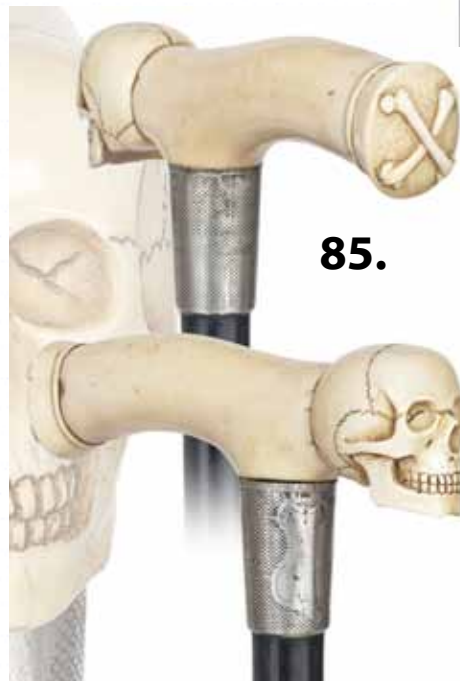
88.



86.

90.

85.





94.



91.

**91. Carved Viennese Cockatiel Cane**

Circa 1900-A large fruitwood carved and colored head with horn beak and glass eyes, horn collar, rosewood shaft and a horn ferrule.-H. 4 3/4" x 4", O.L. 38"  
**\$500-\$900**

**92. Sterling Dress Cane**

Circa 1890-German Art Nouveau Derby handle, rosewood shaft and a horn ferrule.-H. 4 1/2" x 2 1/2", O.L. 38"  
**\$400-\$600**

**93. French Labrador Dress Cane**

Early 20th Century-Gray Labrador Milord knob of a cloudy natural stone with bluish hues, silver collar, ebony shaft and a metal ferrule.-H. 3 1/4" x 1 1/4", O.L. 33 1/4"  
**\$400-\$700**

**94. Sterling Dress Cane**

Circa 1915-German Art Deco crook handle, rosewood shaft with a horn ferrule. German hallmarks.-H. 4 1/2" x 4 1/2", O.L. 36 1/2"  
**\$500-\$800**

**95. Agate Dress Cane**

Early 20th Century-Polished emerald green ball handle with natural white bands, palmwood shaft, Art Nouveau collar and a horn ferrule.-H. 1 1/2" x 1 1/2", O.L. 36 1/2"  
**\$400-\$600**

**96. Palaquium Dress Cane (Gutta-percha)**

Early 20th Century-Well presented handle, signed sterling collar, bamboo shaft and a metal ferrule.-H. 3 1/2" x 5 1/2", O.L. 34"  
**\$300-\$500**



92.

93.

95.

96.





**97. Broadside Hammer System Stick**

Circa 1880-An unusual early cane which was used for the short man to drive nails above his head, a foundry marked hammer, brass side plates, folky wood lettering and design, oak unusual shaft which is square, hexagonal, and cylindrical, and a horn ferrule-H. 5" x 1", O.L. 39"  
**\$300-\$500**



97.

**98. Presentation Ivory Gavel Cane**

Dated 1927-A presentation to Mrs. Belle Rice from members of various courts, American oak shaft and a brass ferrule-H. 3 1/4" x 1 1/2", O.L. 34"  
**\$400-\$600**



98.

**99. Contemporary Secret Compartment Erotic Cane**

A stylized eagle with a hinged compartment showing two lovers, handle is signed 925 but has the word Plata afterwards, registry # 2149 and signature, ebony shaft and a metal ferrule-H. 5" x 2", O.L. 36"  
**\$300-\$500**



99.

**100. Gold Quartz Presentation Cane**

Dated March 1875-"To Rev. Francis Kelly from his friends in Sacramento", fancy heavy gold filled handle, tear drop gold quartz insert with two minor age cracks, rich mahogany shaft and a metal ferrule-H. 3 1/2" x 3", O.L. 36 1/2"  
**\$2,000-\$3,000**



100.





**101. Frank Feather Folk Cane**  
 Dated 1901-This cane is unsigned but definitely by the hand of Feather with many of his well known carvings including "In God We Trust, spread eagle, pointing hand, sword, ax, Indian Chief, arrow, bird, crosses, horse shoe, bugle and the initials S. N. L. carved within a heart" and more, original finish and is a very early example of this troubadour's work-O.L. 34"  
**\$8,000-\$10,000**

**102. Cowboy Bunkhouse Art Cane**  
 Late 19th Century-A very rare and hard to find piece of Western memorabilia, carved horn handle, brass tack collar, turned and polychromed hardwood shaft and a matching natural horn ferrule-H. 5 1/2" x 3", O.L. 37 1/2"  
**\$2,500-\$3,500**



**101.**



**102.**



**103. Pennsylvania Folk Alligator Cane**

Circa 1900-Carved cane with "From the State Capital Building of PA. erected May 31st 1819 Fire February 2nd 1897"; carved collar with the name "Shoemaker"; hardwood shaft and a bi-metal ferrule-H. 5 1/2" x 2 1/4"; O.L. 35 1/2"  
**\$700-\$900**



**103.**



**104. Carved Ivory Devil Cane**

Circa 1885-Unique carving done in great detail, hallmarked and signed real gold collar, exotic wood shaft and an ivory ferrule-H. 4 1/2" x 1 1/2"; O.L. 35 1/2"  
**\$1,600-\$1,900**



**104.**

**105. Scrimshaw Whalebone Cane**  
Circa 1875-Carved hand and ball, whale's tooth collar with crack, two baleen spacers, whalebone shaft and a brass ferrule-H. 4" x 1 1/2"; O.L. 35"  
**\$1,500-\$2,500**

**105.**

**106. Ivory Pan Dress Cane**  
Circa 1880-A whimsical carving which has a lizard and mice listening to the music, fluted silver collar, ebonized shaft and no ferrule-H. 1 1/2" x 2 1/4"; O.L. 36"  
**\$1,000-\$1,500**

**106.**



**107. Buffalo Bill Wild West Show Cane**  
Dated 1891-A presentation from the show to Wallace Stenson, handle is in rough condition and could be restored professionally, ornate gold filled handle, Malacca shaft and a metal ferrule-H. 1 1/4" x 1 3/4"; O.L. 32 1/2"  
**\$1,500-\$2,500**

**107.**





109.

108.

110.

**108. Spitting System Stick Cane**

Late 19th Century-A rarely seen example of the spitting cane which is intact and working, push button release, Malacca shaft and a brass ferrule-H. 3" x 1 1/2"; O.L. 35 1/4"

**\$2,200-\$2,600**

**109. Automated "Charles DeGaul" Stag Sword Cane**

Early 20th Century-A double system stick which has a button in the rear of the head which pushes a tongue forward, 20" four sided blade with decorated top, natural twig spur shaft and a stag and metal ferrule-H. 4 1/2" x 4"; O.L. 35 1/4"

**\$2,500-\$3,000**

**110. Historical Nautical Cane**

19th Century-Bell bronze handle with an engraving of the clipper ship HMS Victory, also engraved on the side of the handle is the name of the ship, these canes were made from wood of the ship as souvenirs after the Admiral Nelson victory over Napoleon in the battle of Trafalgar, bronze eyelets, original patina and no ferrule-H. 1 1/4" x 1"; O.L. 34 1/4"

**\$1,600-\$1,800**



**111. Folk Art Knobby Leg Cane**

Circa 1875-A carved wood and painted lady's leg, engraved brass collar, twig spur shaft and a metal ferrule-H. 4" x 2"; O.L. 35 1/2"  
**\$800-\$1,200**

**112. Whimsical Ivory Man Dress Cane**

Circa 1900-Could be a clown or just your normal bird man, silver collar, rich snakewood shaft and horn ferrule-H. 3 3/4" x 1 7/8"; O.L. 34"  
**\$1,600-\$1,800**

**113. Silver Knob Dress Cane**

Circa 1890-An unusual treatment of copper with applied silver over a natural one piece twig spur shaft, small gold nails attach the silver throughout the handle, unique small rose metal collar and a bi-metal ferrule-H. 2 1/2" x 5"; O.L. 34 1/2"  
**\$800-\$1,000**

**114. Horn Eagle Dress Cane**

Circa 1900-A very detailed carving all done in horn, two color glass eyes, gold metal collar, hardwood shaft and a horn ferrule-H. 3 1/2" x 3 1/2"; O.L. 35 1/4"  
**\$700-\$900**

**115. Massive Silver Carved Dog Dress Cane**

Early 20th Century-Probably the best we have ever seen in this type of application, the silver overlay is attached with silver nails, piqued silver whiskers, semi-precious stones for eyes, hallmarked but unreadable silver collar, partridge wood shaft and a metal ferrule-H. 5" x 2 1/2"; O.L. 36"  
**\$1,200-\$1,500**



**113.**



**112.**



**114.**



**111.**



**115.**



118.



116.



**116. Ebony and Ivory Dance Cane**  
Circa 1930-A stout example of this type of cane, massive ebonized shaft and an ivory ferrule-H. 1 1/8" x 1 1/4", O.L. 35 1/2"  
**\$400-\$500**

**117. Ivory Dress Cane**  
Late 18th Century-Elegant ivory handle, coin silver collar and a pair of eyelets, Malacca shaft and a brass ferrule-H. 1 1/2" x 1 3/4", O.L. 35"  
**\$500-\$600**

120.



**118. Battle of Antietam Civil War Folk-Art Cane**

Circa 1864-1868- Engraved "W L Wright, Boston" civil war silver handle, very unusual script carved shaft with the different generals and their positions in the battle, dates of battle and cut from the battlefield. See photos for script. OL-37"  
**\$1000-\$1500**

119.



**119. Lizard Folk Art Cane**  
Early 20th Century-A carved and burnt one piece hardwood shaft with a coiled snake ready to swallow a lizard, no ferrule-O.L. 35"  
**\$300-\$400**

117.



**120. Tortoise Dress Cane**  
Circa 1880-Engraved and chased gold handle, full tortoise shell shaft and a metal ferrule-H. 7/8" x 7/8", O.L. 33 1/2"  
**\$1,300-\$1,800**

121.



**121. Ivory Humming Bird Cane**  
Circa 1885-A unique ivory carving of what appears to be a sleeping humming bird, small ring metal collar, bamboo shaft and no ferrule. Robert Hoe III Collection-H. 3" x 7/8", O.L. 35"  
**\$400-\$500**



**122. Ivory Tiger Dress Cane**

Circa 1885-A museum quality carving with decorative applied ink lines, two color glass eyes, large signed sterling collar, ebony shaft and a bi-metal ferrule. Robert Hoe III Collection -H. 2 1/2" x 2"; O.L. 37 1/2"  
**\$800-\$1,200**

**123. Under Hammer Gun Cane**

Mid 19th Century-a nice example of this type of percussion firearm, working condition, two unreadable proof marks on the barrel and a beaded sight-H. 3" x 3 1/2"; O.L. 33"  
**\$800-\$1,200**

**124. Whale Tooth Bird Nautical Cane**

Circa 1880-A wonderful nautical presentation which includes a whale's tooth, whalebone shaft and a walrus ivory plinth, very fine condition and has a very gentle patina-H. 5" x 2 1/2"; O.L. 34"  
**\$2,500-\$3,500**

**125. Whale's Tooth Presentation Cane**

Dated 1869-Carved whale's tooth handle, large silver presentation collar, filled coin silver lanyard holes, American oak shaft and a 4" brass ferrule. (small repair on the handle on this whaler made cane)-H. 2" x 1 1/2"; O.L. 36"  
**\$400-\$600**

**126. Whale's Tooth Going Ashore Cane**

Circa 1860-A carved tooth with a mother of pearl disc atop, horn collar, natural twig spur shaft and no ferrule-H. 1 1/2" x 1 3/4"; O.L. 35"  
**\$500-\$700**





129.



128.

127.



130.



132.



131.



**127. Whale's Tooth Dice Cane**

Circa 1875-A polyhedron carved handle with ceiling wax inserts, nautical woven metal collar, ebony shaft and a brass ferrule-H. 1 1/4" x 1 3/4", O.L. 36 1/2"  
**\$600-\$900**

**128. Huge Ivory Dress Cane**

Late 19th Century-Elephant ivory handle with attractive crazing, ribbed metal collar, 1" thick ebony shaft and a 3" brass ferrule-H. 1 3/4" x 3 1/2", O.L. 45"  
**\$400-\$600**

**129. Ivory and Gold Dress Cane**

Circa 1875-The handle has gold filled strapping and end cap, ornate collar, exotic wood shaft and a 2" horn ferrule-H. 5" x 1 1/2", O.L. 35"  
**\$300-\$500**

**130. "K.O.T.M." Dress Cane**

Dated 1899-Knights of the Maccabees, gold filled dress cane which has an enamel medallion atop with and enamel a tent, very ornate work on the handle with four panels of engraving, massive ebony shaft and a large iron ferrule-H. 1 7/8" x 2 1/4", O.L. 38 1/2"  
**\$400-\$600**

**131. Ivory Turtle Cane**

Circa 1940-A carved elephant ivory turtle, gold medal collar, mahogany shaft and a horn ferrule-H. 1 1/2" x 2 3/4", O.L. 36 1/2"  
**\$400-\$600**

**132. Northwest Coast Carved Stag Cane**

Circa 1875-A mythological carved bird and snake, brass collar, native hardwood and a 2 1/2" brass ferrule-H. 3 1/2" x 1 3/4", O.L. 34"  
**\$1,200-\$1,600**



**133. Folk Art Button Shoe Cane**

Late 19th Century-A carved and painted folk art shoe done with great detail, ebony shaft and a metal ferrule-H. 4" x 2", O.L. 37"  
**\$300-\$500**

**134. Porcelain Dress Cane**

Circa 1900-A mint example of a porcelain scenic cobalt dress cane, heavy Moriage work throughout, two gold metal collars, ebony shaft and a metal ferrule-H. 1 1/2" x 5 1/4", O.L. 36"  
**\$600-\$800**

**135. Ivory Gambler's Cane**

Circa 1925-An inlaid ivory dice, small ivory collar, ebony shaft and a very unusual ivory bullet ferrule-H. 1 3/8" x 1 3/8", O.L. 36"  
**\$500-\$700**

**136. Asian Silver Dress Cane**

Circa 1890-A massive silver handle with a high relief casting of a lion chasing lambs, small silver collar, coin silver eyelets, honey malacca shaft and a horn ferrule-H. 3" x 1 3/8", O.L. 37"  
**\$500-\$700**

**137. Carved Russian Ivory Cane**

Circa 1890-A nicely carved Russian peasant lady done in great detail, ribbed ivory collar, ebony shaft and an ivory ferrule-H. 3 1/4" x 1 1/4", O.L. 35 1/2"  
**\$800-\$1,000**

**138. Large Porcelain Dress Cane**

Circa 1900-A cobalt decorated portrait cane, two gold metal collars, ribbed partridge wood shaft and a metal ferrule-H. 1 3/4" x 5 1/2", O.L. 36"  
**\$700-\$900**





139.

141.



140.

**139. Ivory Deer Dress Cane**

Circa 1870-A unique high relief carved handle with a deer in its natural surroundings, pair of coin silver eyelets, rich mahogany shaft and an iron ferrule-H. 2 1/4" x 1 1/2", O.L. 35"

**\$800-\$1,200**

**140. Art Deco Dress Cane**

Circa 1930-An unusual one piece snakewood triangle shaft, silver overlaid handle and a bi-metal ferrule-H. 4 3/4" x 3 1/4", O.L. 36"

**\$600-\$900**

**141. Ivory Octopus Cane**

20th Century-A custom carving by P. Lundberg, hexagonal cherry shaft and a hexagonal ivory ferrule-H. 4 3/4" x 2", O.L. 36"

**\$2,000-\$2,500**



143.



142.

**142. Ivory Dog Dress Cane**

Early 20th Century-A carved dog with two color glass eyes, metal collar, ebony shaft and a bi-metal ferrule-H. 4" x 1 1/2", O.L. 36 1/2"

**\$500-\$600**

**143. Ivory Dog Cane**

Early 20th Century-A carved ivory handle with three dogs, woven leather collar, rich Malacca shaft and a metal ferrule-H. 3" x 2 1/2", O.L. 34 1/2"

**\$600-\$800**



144.

**144. Japanese Ivory Mice Cane**

Late 19th Century-A precise carved handle done in a master's hand, various colored glass eyes, handle is signed with Oriental characters, signed 14 karat gold collar, honey malacca shaft and a horn ferrule-H. 4 1/2" x 1", O.L. 35 1/4"

**\$1,500-\$2,000**



**145. Twisted Horn Dress Cane**

Victorian-A massive carved buffalo horn handle, with an ornate silver end cap, massive signed sterling collar with what appears to be poppies, ebony shaft and a metal ferrule-H. 5" x 3 1/2", O. L. 39"  
**\$600-\$800**

**146. Gold Dress Cane**

Circa 1900-A nice gold handle which is in need of some straightening, small gold filled collar, twine lanyard with wood disc, malacca shaft and a metal ferrule-H. 1 7/8" x 7/8", O.L. 34 1/2"  
**\$300-\$400**

**147. Buggy Whip System Cane**

Circa 1900-A nice original example of these early Ohio made sticks, leather wrapped shaft, whip extension is all original and is 27" long, original copper ferrule-H. 1 3/4" x 3/4", O.L. 36 1/4"  
**\$900-\$1,200**

**148. 14 KT Dress Cane**

Circa 1930-A signed 14k dress handle, ebonized shaft and a horn ferrule-H. 1" x 2", O.L. 35 1/2"  
**\$500-\$600**

**149. Silver Harem Dress Cane**

Circa 1900-A nice 800 silver casting which is signed, bamboo shaft and a metal ferrule-H. 4" x 2 3/4", O.L. 35 1/2"  
**\$800-\$1,200**

**150. Japanese Hear, See & Speak No Evil Cane**

Circa 1890-A whimsical carved ivory handle in which the snake is about to attack the primates, small gold metal collar, bamboo shaft and a bi-metal ferrule-H. 9" x 1 1/2", .L. 35 1/2"  
**\$700-900**



147.



145.

146.



148.



150.



149.





151.

**151. Horn Gun Cane**

Circa 1885-A 44 cal. gun with push button horn trigger, ornate gold filled collar, exotic wood shaft and replaced plug ferrule, twist mechanism is in fine working condition with unreadable proof marks, handle is 4 1/2" x 5 1/2", O.L. 34 3/4"  
**\$1,500-\$2,500**



152.

**152. Revolving Pepper Box Gun Cane**

Circa 1880-Black horn handle with a push button mechanism which has a rotating cylinder that fires what appears to be a 25 cal. shell one at a time, fine working condition, white metal collar, hollow ebony shaft and a brass ferrule. An additional handle comes with this cane which has a very large mother of pearl inlaid horn handle-H. 4 1/2" x 2", length of gun is 6", O.L. 35 3/4"  
**\$3,000-\$5,000**

155.



153.

**153. Ivory Sword Cane**

Circa 1880-A carved ivory handle with inlaid bone, baleen and silver, coin silver spacer, coin silver collar, 23 1/2" three sided blade, hardwood shaft and an ivory ferrule-H. 1 3/4" x 2 7/8", O.L. 36"  
**\$1,000-\$1,500**



154.

**154. G.A.R. Political Cane**

Late 19th Century-A nice clean example of this style of cane, hardwood shaft and no ferrule-H. 3" x 3", O.L. 43"  
**\$200-\$400**



**155. Early Tippler's Stick Cane**

Circa 1885-This cane has both the vile with the original stopper and a small glass, brass handle and brass collar, hardwood shaft and an unusual 5" wood and brass ferrule-H. 1" x 1", O.L. 35"  
**\$300-\$500**



**156. Umbrella System Stick Cane**

Circa 1935-The smoothest working one I have ever seen, Asian designed, signed metal collar, full telescoping shaft and a metal ferrule-O.L. 35"  
**\$300-\$400**

**157. Telescope System Stick Cane**

20th Century-A 3 draw brass and wood telescope, brass collar, ebonized shaft and a brass ferrule-H. 6" x 2", O.L. 38"  
**\$300-\$500**

**158. Cheroot Cane**

Early 20th Century-A bronze cannon cheroot handle, brass collar, faux bamboo hardwood shaft and a horn ferrule-H. 4 1/2" x 2", O.L. 36"  
**\$400-\$700**

**159. Oak Cane Case**

Circa 1900-Manufactured by Revelle & Co. Chicago Ill., holds 70 canes and also has a riser in the bottom, hinged and opens from the front with original hardware, case is on casters and is moveable, nice original condition with a nice original finish-27" x 26 1/2" x 47"  
**\$2,000-\$2,500**

**160. Southern Pine and Varnished Cane Case**

Circa 1890-A unique small country store case with 36 spaces for canes, opens from top and rear, original finish and original hardware-19 1/2" x 19" x 41 1/2"  
**\$1,500-\$2,500**



**156.**



**157.**



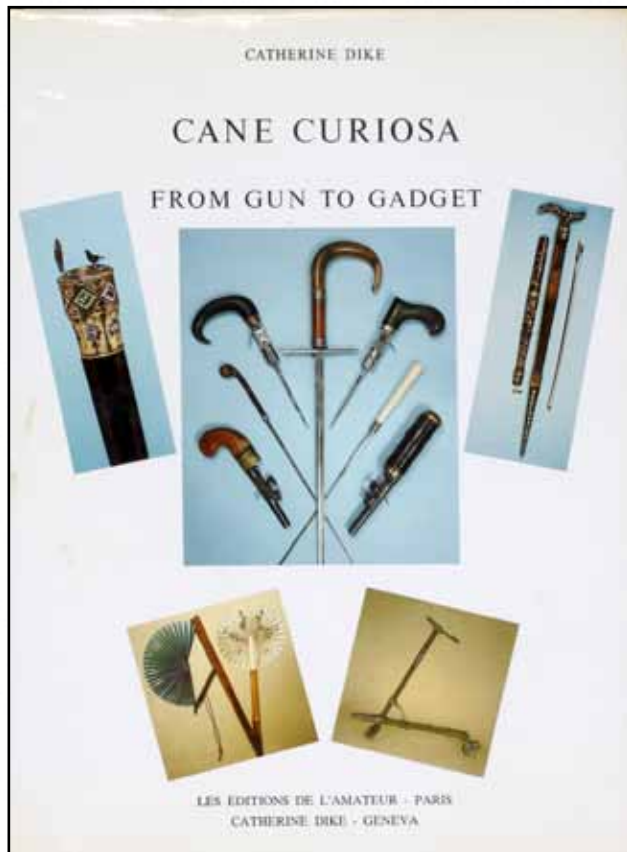
**159.**



**160.**



**158.**

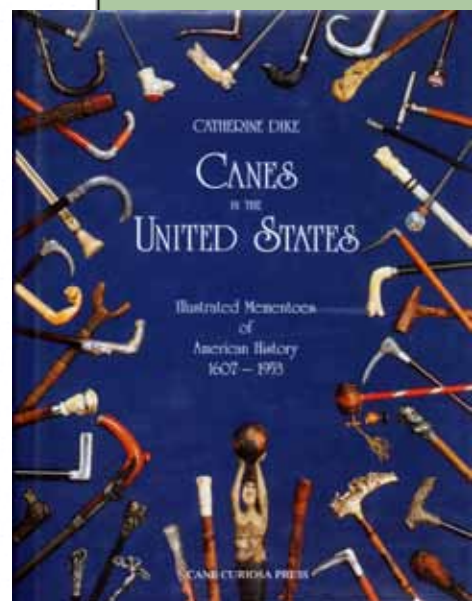
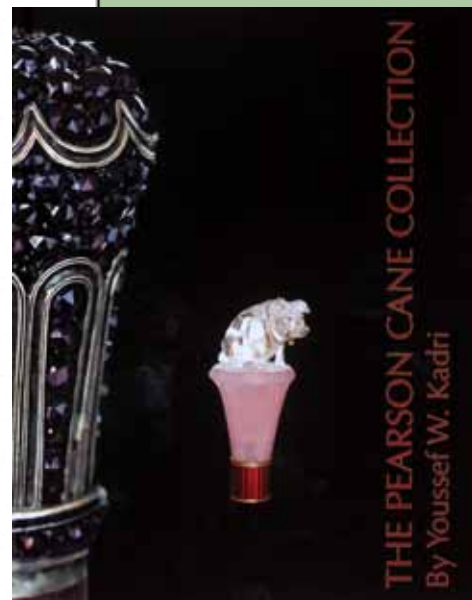


161. English Edition of "Cane Curiosa from Gun to Gadget by Catherine Dike"  
\$300-\$400

162. French Edition of "Cane Curiosa from Gun to Gadget by Catherine Dike"  
\$300-\$400

163. "The Pearson Cane Collection by Youssef W. Kadri"  
\$100-\$150

164. "Canes in the United States by Catherine Dike"  
\$75-\$125





Kimball M. Sterling, Inc. (TFL-1915)  
125 West Market Street  
Johnson City, Tennessee 37601  
kimballsterling @ earthlink.net  
423.928.1471

Member National Auctioneers Association  
© Copyright 2011 Kimball M. Sterling, Inc.



Photography by James Price

Catalog Design by KT Design, LLC  
[www.kristaff.com](http://www.kristaff.com)