

KIMBALL & VICTORIA STERLING  
PRESENT A

# SUMMER CANE AUCTION

SATURDAY,  
JULY 28TH, 2012

11:00 A.M. EASTERN

PREVIEW

FRIDAY, JULY 27TH

1:00-4:00 P.M. AND

JULY 28TH AT 9:00 A.M.



KIMBALL M. STERLING AUCTION GALLERY  
125 WEST MARKET STREET  
JOHNSON CITY, TENNESSEE 37601  
KIMBALLSTERLING @ EARTHLINK.NET  
423.928.1471

LIVE ON THE INTERNET AT  
LIVEAUCTIONEERS.COM  
TWO TIME WINNER OF BEST OF SHOW  
FROM THE NATIONAL AUCTIONEERS ASSOCIATION

[WWW.AUCTIONAUCTION.COM](http://WWW.AUCTIONAUCTION.COM)

# TERMS & CONDITIONS

1. Cash or check. A 20% buyers' premium will be added to the hammer price as part of the sale price for all bidders. We reserved the right to hold purchases until the buyers checks clears if buyer is not known by us. Bank letter of credit is acceptable.

2. Mail or phone bids are accepted; the firm may require a deposit.

3. Kimball M. Sterling, Inc. has endeavored to catalog and describe the property correctly. All property is sold as is and neither the auction company nor the consignor will be responsible for descriptions, genuineness, provenance or condition of the property. No statement in the catalog made orally at the sale or otherwise shall be deemed to be a warranty, representation, or an assumption of liability.

4. In the event of any dispute between bidders, the auctioneer shall have total discretion to determine the successful bidder, in which his determination shall be final or to re-offer and resale the article in dispute. Title of the item or items purchased by the bidder will pass at the fall of the gavel and declaration of bidder. This is not an approval auction. All measurements are approximate.

5. Principal auctioneer: Kimball M. Sterling #2467. B. Elizabeth Sterling, auctioneer # 5757. Firm Kimball M Sterling Inc. TFL-1915

6. Bidders may bid live on the Internet by visiting <http://www.auctionauction.com> You may also view the auction at this site and bid by phone.

7. Communications:

Telephone 423-928-1471.

Fax 423-928-2816.

Cellular 423-773-4073, 423-773-4072.

Email [kimballsterling@earthlink.net](mailto:kimballsterling@earthlink.net)

8. Kimball M Sterling has worldwide shipping available. Mr. We do not ship protected items overseas but can put you in contact with a source that is very reliable and can handle all of your needs.

9. Kimball M. Sterling, Inc. will not be held responsible for bids received on the day of the auction, unexecuted absentee bids, phone bidders not contacted or slow Internet bids. Although we do attempt to get all bids executed problems do occur. There will be no recourse from the bidder. We will not be responsible for items left on our location for over 30 days.

10. Sale will be conducted at 125 West Market Street, Johnson City, Tennessee. 37604. Announcements day of the sale take precedence over pre-sale advertising. Any litigation that pertains to this auction will be conducted in the county of Washington in Tennessee and is agreed upon by registering for this auction.

11. Airport is the Tri-Cities Airport, which is approximately 20 miles from the gallery. Internet catalog and live bidding available at [www.auctionauction.com](http://www.auctionauction.com) Best Western Hotel: 423-282-2126. A very fine hotel which offers Sterling Auction a discount rate is the Carnegie Hotel 1216 W State of Franklin Rd, (423) 979-6400.

12. Please call for condition report on sale lots or email us. We do send out multiple photos by email of any lot in the auction. By registering for this auction you accept the terms.

13. Parking service is free.

KIMBALL & VICTORIA STERLING  
PRESENT A

# SUMMER CANE AUCTION

SATURDAY,  
JULY 28TH, 2012

11:00 A.M. EASTERN

PREVIEW

FRIDAY, JULY 27TH

1:00-4:00 P.M. AND

JULY 28TH AT 9:00 A.M.



KIMBALL M. STERLING AUCTION GALLERY  
125 WEST MARKET STREET  
JOHNSON CITY, TENNESSEE 37601  
KIMBALLSTERLING @ EARTHLINK.NET  
423.928.1471

LIVE ON THE INTERNET AT  
[LIVEAUCTIONEERS.COM](http://LIVEAUCTIONEERS.COM)  
TWO TIME WINNER OF BEST OF SHOW  
FROM THE NATIONAL AUCTIONEERS ASSOCIATION



1.



4.



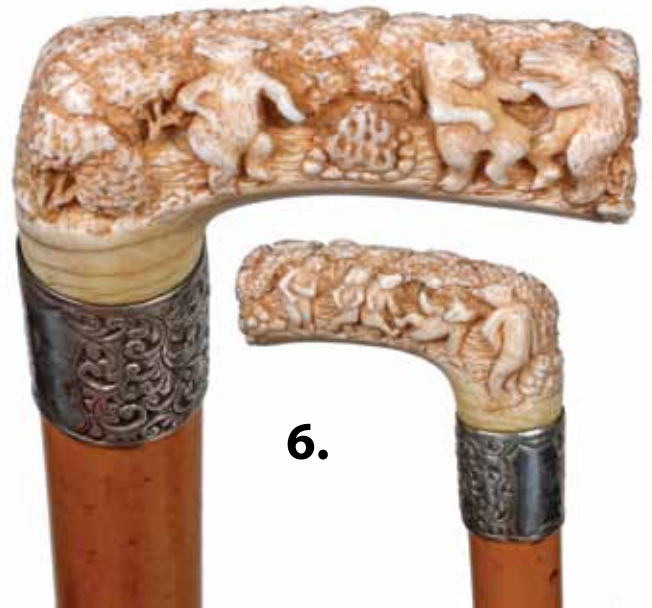
5.



3.



2.



6.

**1. Ivory Horse Cane-20th Century**

A large carved ivory horse head with two color glass eyes, very high relief, signed sterling collar, large snake wood shaft and a brass ferrule-H. 5" x 1 1/2" x 2 1/2", O.L. 37" \$1,200-\$1,500

**2. Stag Dress Cane-20th Century**

A carved stag handle with two mice which are about to be eaten by a coiled snake, stepped thick bamboo shaft and a horn ferrule H. 2 1/2" x 3 1/4", O.L. 37" \$500-\$700

**3. Silver Dog Cane-Ca. 1990**

A well cast sterling handle with two color glass eyes, signed by Keith Cowie (one of England's last registered silver smiths), exotic wood shaft and a metal ferrule H. 2 1/2" x 2 7/8", O.L. 36" \$300-\$500

**4. Ivory Turk's Knot Cane**

Early 20th Century-Carved ivory Turk's knot, horn collar, ebonized shaft and a metal ferrule H. 2" x 1 1/2", O.L. 36" \$500-\$600

**5. Horn Dress Cane**

Ca. 1890-Victorian carved horn handle, signed sterling collar, faux bamboo oak shaft and a horn ferrule-H. 4 1/2" x 3", O.L. 36" \$350-\$550

**6. Bear Ivory Cane**

Dated 1894-A carved ivory handle with 8 dancing bears (in the style of William H. Beard), ornate silver British ferrule, thick malacca shaft, could be teddy bears and a bi-metal ferrule H. 3 1/2" x 1 1/2", O.L. 36" \$1,500-\$2,000



8.

10.



7.

11.



9.



**7. Ivory Pique Dress Cane**

Ca. 1870-An ivory handle with silver inlay and pique work, turquoise bead atop, Malacca shaft and a horn ferrule  
H. 1 1/2" x 2", O.L. 36"  
\$800-\$1,200

**8. Ivory Fist Cane**

Late 19th Century-A carved ivory clinched fist and egg, baleen spacer, ebony shaft and a bone ferrule-H. 3 1/2" x 1 1/2", O.L. 36"  
\$600-\$700

**9. Ivory Erotic Cane**

Early 20th Century-A carved Asian symbolic penis which is signed by a red cartouche, signed sterling collar, Malacca shaft and a horn ferrule-H. 5 1/4" x 1 1/2", O.L. 36"  
\$1,000-\$1,500

**10. Bone Nautical Cane**

Ca. 1975-A scrimshawed bone cane with various ships, brass collar, ebonized shaft and a brass ferrule-H. 4 1/2" x 1 1/2", O.L. 35"  
\$200-\$300

**11. Gold Quartz and Garnet Dress Cane**

Ca. 1900-A 14kt gold handle with a gold quartz disc atop, inlaid garnets throughout the gold work, not of the Gold Rush Era, but a quality dress cane, ebony shaft and a bi-metal ferrule-H. 1 1/2" x 2", O.L. 36"  
\$12,000-\$14,000



**12. Stag Skull Cane**

Ca. 1930-A carved full figured skull, folk art oak shaft with coiled snake and a brass ferrule  
H. 2 ¼" x 2", O.L. 35 ½"  
\$500-\$600

**13. Tobacco Snuff Cane**

Ca. 1880-A horn handle which unscrews to expose a brass compartment which holds a snuff spoon, large Malacca shaft and a horn ferrule-H. 1 ½" x 1", O.L. 36"  
\$500-\$600

**14. Erotic Ivory Cane**

Late 19th Century-An ornate ivory handle with a metal end cap which has "Do Not Open" engraved, by removing the end cap an erotic scene is exposed, ornate silver plated collar, mahogany shaft and a metal ferrule-H. 4 ¼" x 1 ¼", O.L. 36"  
\$1,000-\$1,500

**15. Ivory Eagle Cane**

Ca. 1940-A carved ivory eagle with two color glass eyes, ornate silver collar, mahogany shaft and a brass ferrule-H. 4" x 1 ½", O.L. 36"  
\$700-\$1,200

**16. Carved Arab Cane**

Early 20th Century-One piece carved Arab with original lanyard, twigspur shaft and a 2 ½" iron ferrule-O.L. 35"  
\$500-\$600

**17. Carved Biblical Cane**

Ca. 1890-A carved one piece cane with original tassel, twigspur shaft and metal ferrule-O.L. 34 ½"  
\$500-\$600

**18. Ivory Eagle Cane**

Ca. 1865-Carved walrus eagle, small silver collar, bamboo shaft and a 3" brass ferrule  
H. 3 ½" x ¾", O.L. 35"  
\$400-\$500

22.



21.



19.



20.



23.



**19. Horn Horse Hoof Cane**  
Late 19th Century-A massive carved hoof handle with a brass shoe, ornate gold-filled collar, exotic wood shaft and a horn ferrule-H. 4" x 4 1/2", O.L. 36"  
**\$700-\$900**

**20. Porcelain Dress Cane**  
Late 20th Century-A modern porcelain bust of what appears to be Senior Vivian of Brazil, exotic wood shaft and a brass ferrule H. 4" x 2 1/4", O.L. 36"  
**\$200-\$300**

**21. Silver Snake Cane**  
20th Century-An ornate sterling casting done in the Victorian manner, cherry wood shaft and a brass ferrule-H. 4 1/2" x 4", O.L. 36"  
**\$500-\$600**

**22. Rock Crystal Dachshund Dress Cane**  
Ca. 1930-A carved rock crystal dog with a satin and clear finish, gold dog collar with beaded heart, ornate checkered gold collar, ebony shaft and a horn ferrule H. 2 3/4" x 2 3/4", O.L. 37 1/2"  
**\$2,500-\$3,000**

**23. Ivory Automated Lobster Claw Cane**  
Early 20th Century-A carved ivory handle with a spring loaded lower jaw, possibly a glove holder, small white metal collar, walnut stained bamboo shaft and a ivory ferrule-H. 4 1/2" x 2", O.L. 35"  
**\$2,000-\$2,200**



24.

28.



29.



25.



26.



27.



**24. Ivory Dragon Cane**

Early 20th Century-A large ivory handle with a coiled dragon covered by his wings, sitting in a field of skulls, hallmarked British coin silver collar, maple shaft and a horn ferrule-H. 2 ½" x 3", O.L. 36" \$2,000-\$2,500

**25. Ivory Umbrella Cane**

Early 20th Century-Carved ivory handle with gold filled end caps, gold filled ornate collar, working an useable umbrella with cover and a metal ferrule H. 4 ½" x 1 ¼", O.L. 35" \$200-\$300

**26. Ivory Fist and Egg Cane**

Ca. 1900-A nicely carved ivory fist, rosewood and ivory spacer, thick rosewood shaft and an ivory ferrule-H. 1 7/8" x 2", O.L. 36 ½" \$500-\$700

**27. Asian Bone Dress Cane**

Ca. 1890-A carved bone handle with an 2 apes in a tree, signed 14kt collar, rich mahogany shaft and a bi-metal ferrule H. 4 ¼" x 1 ½", O.L. 34 ½" \$500-\$700

**28. Ivory Alligator Cane**

Early 20th Century-A full bodied carved gator, ornate silver metal collar, exotic wood shaft and a silver-plate ferrule H. 4 ¼" x 1 ½", O.L. 34 ¼" \$1,000-\$1,200

**29. Ivory Horse Cane**

Ca. 1880-A unique and deeply carved ivory horse with two color glass eyes and original patina, ornate silver metal collar, stepped oak shaft and a bi-metal ferrule H. 4 ¼" x 1 ½", O.L. 34 ½" \$1,000-\$1,500





**30. Ivory Dog and Wolf Cane**  
 Ca. 1850-A large ivory handle with average striations, with a carved hound and also what appears to be some type of wolf (be your own judge), small silver metal collar, faux bamboo hardwood shaft and a silver metal ferrule  
 H. 5 ½" x 2", O.L. 36"  
**\$800-\$1,200**

**31. Gun and Pistol Shooting Cane**  
 Early 20th Century-A unique example of this style of cane with an embossed leather seat which has pistols and rifles, signed "AKAH", brass locking buttons, interesting locking seat mechanism collar, original metal finish, hickory handle and shaft, and original 3 ½" iron washer and pike ferrule-O.L. 3 ½"  
**\$500-\$700**

**32. Ivory Bull Dog Cane**  
 Early 20th Century-A carved ivory bull dog dressed in a carpenter's apron with two color glass eyes, ornate silver collar, ebonized shaft and a metal ferrule  
 H. 4" x 1 ½" x 2", O.L. 36"  
**\$700-\$1,000**

**33. Sterling Skull Cane**  
 Late 10th Century-A perfectly cast and signed sterling skull and cross bones, natural twig shaft and a bi-metal ferrule-H. 2 ½" x 3 ½", O.L. 36"  
**\$400-\$700**

**34. Sterling Cigarette Lighter Cane**  
 Ca. 1930-An ornate signed sterling compartment cane which holds a lighter, ebonized shaft and a brass ferrule-H. 5/8" x 3", O.L. 36"  
**\$500-\$600**

**35. Fine Dress Cane**  
 Ca. 1935-A formed crook handle which is possibly compressed tortoise, signed sterling collar, wild cherry shaft and a horn ferrule  
 H. 4 ½" x 4", O.L. 33"  
**\$400-\$600**

**36. Rare Flute System Stick**  
 Ca. 1850-A unique example which is pictured on page 127 of "Cane Curiosa" by Catherine Dike. Ivory handle with air holes for a mouth piece, unique malacca shaft which has been carved in the style of bamboo, six finger holes and a most unique vertical mounted pivoting key, original metal ferrule, Former Catherine Dike Collection This is a quality instrument in working condition.-H. 1 ½" x 1", O.L. 33 ¼"  
**\$1,000-\$2,000**  
 (Robert Pearson Collection)

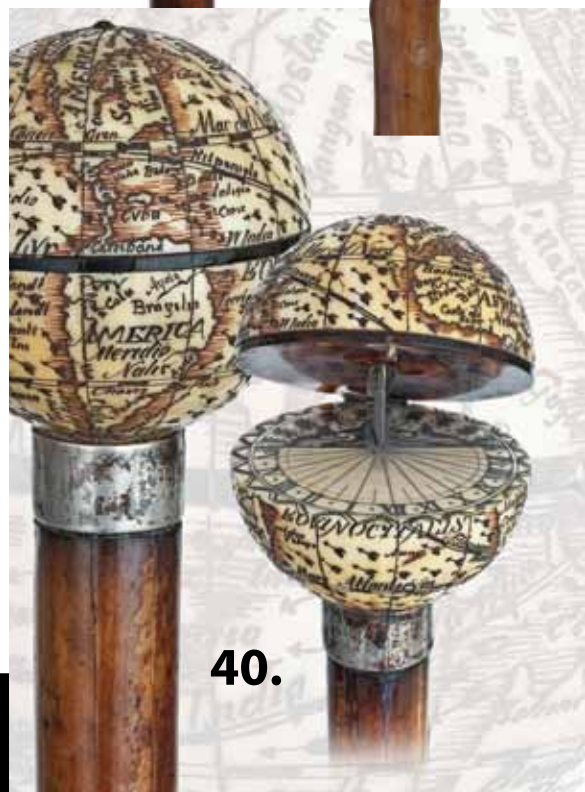


37.



38.

39.



40.

**37. Missouri Prison Folk Art Cane**

Early 20th Century-A hand carved and decorated maple folk art cane which under carved areas appear to be a recessed basket weave, "Salus Populi Suprema Est Lex" is inscribed at the top of the shaft (The good of the people is the main law), the following faces and names appear as carvings and inkings on the shaft: Gov. J. W. Folk. Mo, M. W. Hall. Warden M.S.P., R. E. See Deputy Warden, Hon J. F. Gmeliah, Pres. Prison Board, Hon Wm W. Wilder, Sec. Prison Board, Hon H. S. Hadley, Member Board, high quality folk art cane of this genre with a 4" brass ferrule-O.L. 35" \$2,000-\$4,000

**38. Ivory Sea Creature Cane**

Late 19th Century-A carved ivory handle with two color glass eyes, a creature with unique features, hallmarked British ornate silver collar, twigspur shaft and no ferrule-H. 4 1/2" x 1 3/4", O.L. 35 1/4" \$400-\$600

**39. Monkey Dress Cane**

Ca. 1910-A carved ebony monkey with two color glass eyes, signed Brigg collar, twigspur shaft and a metal ferrule H. 1 1/2" x 1 1/2", O.L. 28 1/2" \$200-\$300

**40. Globe & Sundial Ivory and Tortoiseshell Cane**

19th Century. Terrestrial globe accurately carved in scrimshaw with the continents, oceans and their related appellations. The globe is hinged and opens to show on one side a sundial with an accurate scale with Roman numerals and on the other thick tortoiseshell veneer, malacca shaft with a silver collar and a metal ferrule. H. 2 1/4" x 2 1/4", O.L. 35 1/4" \$2,000-\$3,000



42.



41.



43.

**41. Whale Tooth Penguin Nautical Cane**

Ca. 1860-A wonderful nautical which includes a figural whale's tooth handle and turned plinth, whale bone and baleen washer collar and a malacca shaft with a brass ferrule.

H. 5 3/4" x 2 1/4", O.L. 38 1/4"  
\$2,500-\$3,500

**42. Top Rate Marine Cane**

Ca. 1840-1850-Substantial whale tooth knob well carved as a fist with a buttoned cuff and a coiled snake with a large head and forked tongue, whalebone collar, malacca shaft with eyelets and a 5" metal ferrule. Imbued with the sensitivity and skill of the whaler artist and his innate aesthetics.

H. 3 3/4 in. x 2 1/2 in., O.L. 37 3/4 in. 1/4"  
\$4,000-\$5,000

**43. Whalebone Nautical Cane**

Ca 1865-A long and tapering sperm whales' tooth ivory handle turned with multiple rings and set at the top with an abalone shield on a whale bone shaft with a metal ferrule. This New England cane is in original condition with an expertly secured crack to the handle. H. 3 1/4" x 1 1/4", O.L. 35"

\$1,500-\$2,000

**44. American Marine Ebony, Whale Tooth, Tortoiseshell and Baleen Cane**

Late 19th Century- Octagonal ebony knob with alternating whale tooth and tortoiseshell veneer on the side and a baleen shield on the top, ebony shaft carved with a twist similar to the narwhal and a metal ferrule.

Rarely encountered in the marine world. H. 3 1/2" x 1 3/4", O.L. 35 1/4"  
\$800-\$1,200



44.



47.

**45. One-of-a-kind Nautical Cane**

Mid. 19th Century.-A whale tooth handle carved as stylized bird and attached to a shaft made of a *Dasyatis Sephen* stingray tail. This cane was probably put together by a sailor artist spending long days on his lonely voyage. The bird has delicately wings and tail feathers and baleen inset eyes.

H. 6 1/2" x 2 1/4", O.L. 35"  
\$3,000-\$5,000

**46. Native American Indian Ivory Cane**

Ca. 1880-Substantial ivory knob carved with two chief faces with feather head dresses against one-another. Malacca shaft with high ridge and a metal ferrule. American Indian motifs are desirable and strongly requested collectables.

H. 3 1/2" x 2", O.L. 34 3/4" \$  
\$3,000-\$4,000

**47. A Fine American Gold Presentation Cane**

Ca. 1880-Gold rolled L-shaped handle densely hand chased and decorated in high relief with rich scrollwork and flowers and personalized with an engraved cartouche "Capt. Robt. Watson". Ebony shaft and a worn out ferrule.

H. 3"x2 3/4", O.L. 34 1/2"  
\$500-\$1,000

**48. Giant Cane**

19th Century-Made in two pieces of a quirky branch naturally grown with twists, the crook handle with an ivory tip and the shaft with an iron ferrule. According to the previous owner this one-of-a-kind cane was used as an eye catcher at one cane maker stand at the Centennial International Exhibition of 1876 in Philadelphia. H. 6 1/2" x 5 1/2", O.L. 51 1/2"

\$700-\$1,000



46.



45.



48.

**49. Hard Stone Dress Cane**

Ca. 1910-Straight and tapering opaque, blue-to-green hardstone handle which seems to be turquoise, rosewood shaft with a gilt collar and a horn ferrule. H. 3 1/2" x 3/4", O.L. 38 1/2"  
**\$400-\$700**

**50. Ivory Full Nude Dress Cane**

Ca. 1890-A carved ivory bent Venus drying her hair with a great view to the butt. This cane is most likely French, has a white metal collar, a rosewood shaft and a 3 1/4 in. long staghorn ferrule. Museum quality sensual carving at its best. H. 4 1/4" x 2", O.L. 37 1/4"  
**\$4,000-\$6,000**

**51. Erotic Ivory Cane**

Ca. 1880 -Unique ivory ball knob carved with three erotic scenes in heart shaped framing. Deliciously nasty erotic carving from the days of yore in superb condition with a silky feel to the wearer's hand. Pepper bamboo shaft ,silver collar, and metal ferrule.  
H. 2" x 2", O.L. 33 1/4"  
**\$5,000-\$8,000**

**52. Victorian Naughty Leg Cane**

Ca 1870-Ivory leg with frilled underpants and garter and boots emphasized with baleen inlay, full bark malacca shaft ,silver collar with obscured hallmarks and metal ferrule. Classic and mildly erotic collectable in top quality and with a superb, age patina.  
H. 4" x 1 1/2", O.L. 32 1/2"  
**\$1,200-\$1,800**

**50.**



**49.**



**52.**



**51.**



**53. French Porcelain Dress Cane**

Ca. 1900-A decorative handle with a gilt metal knob and matching collar and a central and cylindrical green porcelain part micro painted with the portrait of a fashionable beauty of the period. Fruitwood shaft and a brass ferrule. H. 3 1/2" x 1", O.L. 33 1/2"  
**\$400-\$600**

**54. Ivory Nude Cane**

19th Century-Standing nude study carved of one piece of blameless and fine grained ivory, golden collar with a J.H maker's mark besides the number 4 in a square frame, honey malacca shaft and a metal ferrule. This handle must have been created by a master's hand and is in very fine condition. H. 5" x 1 1/2", O.L. 38"  
**\$4,000-\$6,000**

**55. French Erotic Cane**

Ca. 1860-Mushroom shaped gilt knob entirely hand chased and engraved with dense foliate scrolls, decorated with an applied braid on its waist and an integral twist on the collar and personalized with a large enameled "F" under a crown on the top. So far, so good, however, what makes this cane very special is a concealed container with a micro, ivory hand painted erotic miniature hidden under the hinged, spring operated and unfolding cover which can be triggered by a tiny push button in under the lid. Tall and well-dressed Malacca shaft with gilt eyelets, knotted loop with two tassels with matching golden metal tips. H. 2 1/2" x 1 3/4", O.L. 41"  
**\$7,000-\$9,000**



**53.**

**54.**

**55.**



56.



**56. Swan Hard Stone Dress Cane**

Ca. 1900-It has a large, figural white handle cut in the shape of a Swan's head leaning on its graciously bent neck. The water bird has a fine engraved surface suggesting the plumage and a magnificently fitted black onyx mask with a fleshly frontal knob, red coral beak with nostrils and round ruby cabochons eyes. The asymmetrical shape of the handle lends the swan grace and elegance and the ergonomic correct fit for its wearer and comes on an ebony shaft with a braided silver wire collar. This cane is in the taste of Carl Faberge, has possibly Russian ties and belongs to the upscale jewelry objects or Virtue. H. 4 1/2" x 2 1/2", O.L. 37 3/4" **\$4,000-\$6,000**

57.



58.



**57. Tortoiseshell Dress Cane**

Early 20th Century-Very large and well streaked tortoiseshell crook handle on an ebony shaft with horn ferrule and golden collar struck with a London H.M.C. maker's mark beside an 18 Ct. GP. H. 4 3/4" x 3 3/4", O.L. 38" **\$1,200-\$1,800**

**58. Figural Gold Cane**

Ca. 1880-An 18 karat yellow gold handle modeled as horse leg with a very finely engraved surface and richly chased collar on a rosewood shaft with a horn ferrule. This cane witnesses a great manufacturing sophistication and is from the highest grade of its kind. A full set of various American hallmarks and a manufacturing number attest for its authenticity. It survived with its entire original sparkle. As fresh as on its first day. H. 3 1/2" x 2", O.L. 34 1/2" **\$1,800-\$2,500**

59.



**59. Tiffany Jewelry Dress Cane**

Early 20th Century-Stretched Milord citrine knob with a round and widening top centered by an intense red and faceted stone (probably ruby) in a yellow gold frame (tested for 18 karat). The knob with a frosted surface and a wide, red carnelian collar is mounted on a deep black ebony shaft with a horn ferrule. Beautiful and precious, this cane was obviously treasured and survived in mint condition with the authenticating "TIFFANY & Co. MAKERS" mark on the shaft. H. 3 1/2" x 1 1/4", O.L. 37 1/4" **\$3,000-\$4,000**

**60. Brigg Hard Stone Dress Cane**

Ca. 1900- Substantial, figural tiger eye lion head with dark red ruby eyes. The gold-brown stone itself has the best suitable color for the King of Animals. The precious knob comes on a select malacca with a horn ferrule and an 18 karat yellow gold collar engraved "HORSE GUARDS PARADE." and stamped "BRIGG LONDON" beside an authenticating series of London hallmarks and a "M.J." maker's stamp. Better than the best and retailed by Brigg, the pinnacle of English luxury cane brands and a distinguished one in the annals of cane history, this cane is a one-of-a-kind work of art where function meets beauty. It is also an accomplished example of very desirable and exceedingly rare type of canes, which came into fashion with the impact of Carl Fabergé. Pristine condition.

H. 2 1/2" x 2 1/2", O.L. 38 1/2"  
\$5,000-\$7,000



**61. Fancy Ivory Dog and Rabbit Cane**

Ca 1880-A nicely carved ivory dog head against a rabbit front part in the grass, chased silver collar with obscured London hallmarks, malacca shaft and a metal ferrule. Great surface to the large ivory and great fit to the hand.

H. 5" x 1 3/4", O.L. 34 3/4"  
\$2,000-\$3,000



**62. Ivory Snake Cane**

Ca. 1880-A very unique English example of a substantial carved ivory handle of a pair of detailed snakes with intertwined scaled bodies and large heads with forked tongues. The shaft is a well-dressed malacca with an ivory ferrule and a silver collar elaborately chased with a dragon. H. 4 1/4" x 1 3/4", O.L. 35 3/4"

\$2,500-\$3,500





**63. Hard Stone Dress Cane**

Ca. 1900 Large pale green bowenite knob carved with radiating, vertical ribs, braided silver wire collar, select malacca shaft and a horn ferrule. This cane is in the taste of Carl Faberge, has possibly Russian ties and belongs to the upscale jewelry objects or Virtue. H. 3" x 2 1/4", O.L. 37 3/4" \$3,000-\$4,000

**64. English Ivory Lion Cane**

Ca. 1890-Ivory lion carved seated in the heraldic style with a slightly side wards turned head with a powerful stare, gorgeous mane and a raised front paw. Oak shaft with a metal ferrule. H. 3 3/4" x 2", O.L. 37 1/2" \$1,600-\$2,500



**65. Tortoiseshell and Ivory Rabbit French Cane**

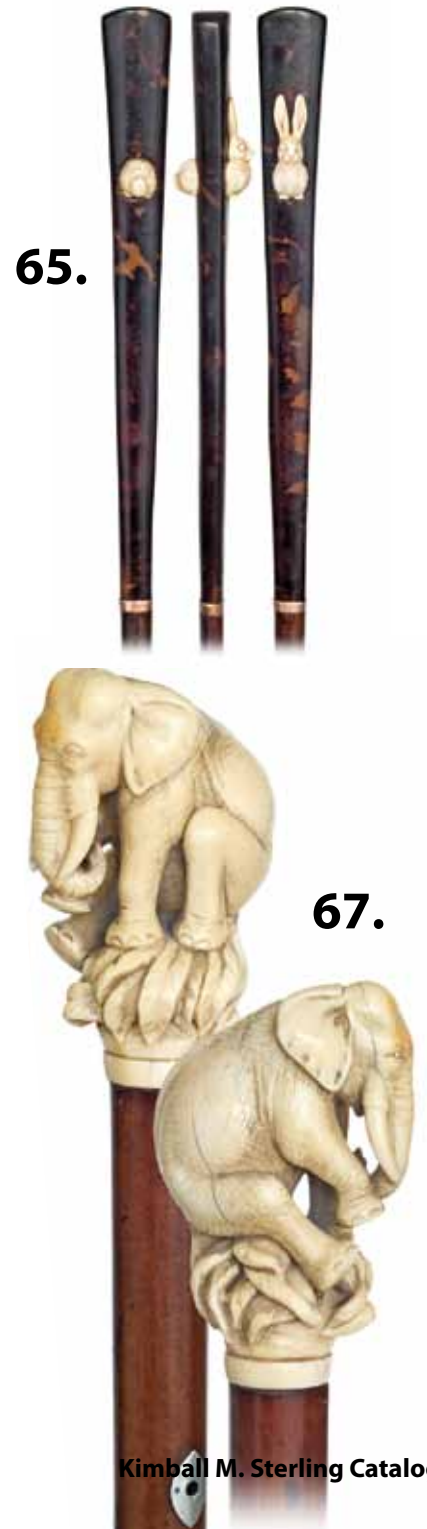
Ca. 1890-Substantial tortoiseshell straight and tapering handle with an ivory long eared rabbit head inset on one side and back part on the other to give the impression that the rodent goes through the handle. Pepper bamboo shaft with a long brass ferrule. H. 11 3/4" x 1 1/2", O.L. 37" \$1,200-\$1,800

**66. Folk Art Mountain Life Cane-** Mid 19th Century-Single piece hardwood folk art cane with a hunter with rifle, climbing rod and dog in the mountains. The mountain fauna is well represented with stags, deer, a wild goat, fox, rabbit, frog and a coiled snake. The darker handle is wood and carved in the shape of stag horn. H. 6" x 3", O.L. 35" \$1500-\$2,000



**67. Ivory Elephant Cane**

19th Century-An ivory elephant seated on reeds with a long trunk flanked by a pair of mighty tusks. Unusual fine detail to the face with tiny eyes, skin and tail. malacca shaft with silver eyelets and a horn ferrule. Top-rate London quality and praised by age. H. 3 1/2" x 2 1/4", O.L. 38 1/4" \$2,500-\$3,500



**68. Articulated Dog Cane**

Ca. 1880-Fruitwood crook handle carved with a glove holder with ivory ears, glass eyes and push button lower jaw with sharp teeth and red tongue. Ebonized hardwood shaft, silver collar and metal ferrule.

H. 4 1/4" x 3 1/4", O.L. 36 1/4"  
\$900-\$1,200

**69. Spectacular Ivory Bear Cane**

19th Century-A large ivory slumbering bear handle on Malacca shaft with a metal ferrule. The bear is well rendered with the head resting on its front paws and a thick and shaggy fur. One-of-a-kind item probably made to order to the lofty Russian elite of the Imperial period. H. 4 3/4" x 2 1/2", O.L. 36"

\$2,500-\$3,500

**70. Viennese Silver and Enamel Cane**

Ca. 1900-Slender and tapering Milord knob engine turned and enameled in pastel colors with trailing garlands, roses and leaves to end plain and with a bead band. The knob is topped by a round rose quartz cabochon and comes on a rosewood shaft with a metal ferrule. Various Viennese hallmarks and in mint condition. H. 3 1/4" x 1", O.L. 37 3/4"

\$1,000-\$1,500

**71. Figural Day Cane-**

Ca. 1890-L-shaped mother of pearl handle with a rhino horn French Bulldog at the end. The canine head shows fine detail including sharp teeth, inset glass eyes and a carved cord collar, and the distinguishing texture and dark caramel tones of rhino horn. The shaft is snakewood and ebony and is fitted with a braided silver wire collar.

H. 2 3/4" x 1 1/2", O.L. 36 3/4"  
\$1,000-\$1,500

69.

68.

70.

71.



**72. German Erotic Micro Carved Ivory Cane**

Late 19th Century-A stretched pistol grip carved ivory handle of a nude Venus, malacca shaft and a long staghorn ferrule.

H. 4 1/4" x 2 1/4", O.L.32 1/2"  
\$4,000-\$5,000

**73. Erotic Ivory Cane**

Ca. 1880-This is one of the best carvings that we have seen in this style of erotic hinged ball canes. The ball shows what seems to be a helmeted warrior's head and the two scenes within the sphere are expertly carved in deep relief and with extraordinary facial expressions and body language. Both remarkably fresh and vibrant scenes involve clergymen in excessively daring settings. The hinge is very good and tight on this example, plain silver collar, stained fruitwood shaft and a metal ferrule. The ivory displays a weathered surface and the condition is good. H. 2" x 2" OL. 36"

\$6,000-\$8,000

**74. Erotic Ivory Cane**

Ca. 1890-Large crook handle with a naked couple in an erotic embrace. Very daring for its day, the well-aged handle comes on a malacca shaft with a silver collar struck with London hallmarks and metal ferrule.

H. 5 3/4" x 2 1/2", O.L. 35"  
\$3,000-\$4,000

**74.**



**72.**



**73.**





75.



77.



76.



78.

80.



79.



**75. Ivory Young Girl Cane**

Ca. 1885-A well carved girl's head in bonnet, turned ivory collar, makassar ebony shaft and a metal ferrule. Possibly French and with stain highlights.

H. 2" x 1 1/2", O.L. 34 1/2"

**\$800-\$1,200**

**76. Mint Toledo Dress Cane**

Ca. 1885-A remarkable L-shaped steel handle with 24 karat dense Arabesques gold inlay in the taste of the Zoluagas from Eibar, Spain, snakewood shaft and a horn ferrule. H. 2 3/4" x 1 1/2", O.L. 35 3/4"

**\$700-\$900**

**77. Rose Quartz Dress Cane**

Early 20th Century-Polished translucent rich pink color, ebony shaft with gilt metal collar and a horn ferrule.

H. 1 3/4" x 1 3/4", O.L. 39 1/4"

**\$400-\$600**

**78. French Owl Dress Cane**

Ca. 1880-L-shape ivory handle carved with an owl between integral braid and a belt collars, rarely encountered grenadillo wood shaft and a horn ferrule.

H. 4 3/4" x 3 3/4", O.L. 36"

**\$1,000-\$1,800**

**79. A High Quality Toledo Cane**

19th Century-A blued steel knob with a 24 karat gold and pure silver damascened allegorical scene within a round frame of arabesques and trellises gold inlay on a fancy, two colored oak shaft with a metal ferrule. Speaks the quality Zoluagas.

H. 1 3/4" x 1 3/4", O.L. 34"

**\$800-\$1,000**

**80. Italian Ivory Knights Cane**

Mid. 19th Century-The ivory handle is turned in a straight and elongated shape and engraved in the medieval taste with two standing knights against Gothic framing on the side and a stylized bloom on the top. Ebony shaft and an ivory ferrule.

H. 3" x 1", O.L. 33 3/4"

**\$900-\$1,200**



86.

**81. Silver French Cane**

18th Century-Large and elongated silver pommel knob delicately modeled, cast, finely hand chased and engraved with foliate scrolls, shells and other Louis XVI motifs. Malacca shaft with a metal ferrule and silver eyelets with the original leather tassel.

H. 3 ¼" x 1 ¼", O.L. 36 ½"

\$1,000-\$1,500

**82. European Court Cane**

18th Century-Ivory handle carved with oak leaves and acorns and acanthus foliage on a long malacca shaft with ivory eyelets and metal ferrule.

H. 3" x 1 ½", O.L. 39 ½"

\$800-\$1,200



81.

82.



84.



**83. Silver Dress Cane**

Ca 1900-Large and well-proportioned Opera handle entirely decorated with a pebble pattern and personalized at the front with the initials "CB" and on the back with a Silver Jubilee date "1875 2.1 1900". German hallmarks, rosewood shaft with a brass ferrule.

H. 4 ¼" x 2 ½", O.L. 37 ½"

\$400-\$600

**84. Agate Dress Cane**

Early 20th Century-The polished long and well-proportioned Milord handle of a naturally gray color and subtle foggy structure, rosewood shaft with an Art Nouveau white metal collar and a horn ferrule. H. 2 ½" x 1", O.L. 37 ½"

\$500-\$700



83.



85.

**85. Art Nouveau Dress Cane**

Ca. 1900-Large and well-proportioned Silver Opera handle, rosewood shaft and a horn ferrule. Beautiful decoration, engraved initials "C.R." and a full set of German hallmarks.

H. 4 ¼" x 2 ½", O.L. 35 ½"

\$500-\$700

**86. Ivory Figural Cane**

Ca. 1890-Naturalistically carved fox handle, fine detail and well figured fur coat with a bushy tail. Ebony shaft with an engine turned silver collar and a white metal ferrule. H. 4" x 2 ½", O.L. 37"

\$2,000-\$3,000



87.

88.

89.

**87. Sèvres Porcelain Dress Cane**

Ca. 1900-Cobalt blue porcelain ball knob hand painted with a cherub and sunflowers, Art Nouveau white metal collar and a fruitwood shaft with a brass ferrule. H. 1 ½" x 1 ½", O.L. 37" \$400-\$600

**88. Luxury Ivory and Red Coral French Cane**

Second half of the 19th Century. Straight and tall ivory handle carved with faux-sprig knots individually set with red coral tips, slender split bamboo shaft and a brass ferrule. The handle is topped by a turned finial with a silver ferrule. Elegant, precious and intact and with initial silk tassel. H. 12", O.L. 35" \$800-\$1,200

**89. Ivory Rabbi Cane**

19th Century-Large ivory knob carved to depict a Rabbi's head with a bearded face, monocle and Kippah, malacca shaft, tula silver collar and a 2 ¾" tall ivory ferrule. This cane has an enormous eye-catching power and, with its iconic identity, could possibly be a commemorative artifact. H. 3 ½" x 2 ½", O.L. 38 ½" \$2,000-\$3,500

**90. Dual Purpose Staghorn Cane**

19th Century-Staghorn handle carved with the face of bearded old man and with a cavity on the top for a small ration of snuff tobacco. Pepper bamboo shaft with turned staghorn collar and brass ferrule. H. 3 ¾" x 2 ¼", O.L. 37 ½" \$900-\$1,200

90.





95.

94.

92.

91.

93.

**91. Masonic Templar Knights Sword Cane**

19th Century-Black painted metal container cane with a white metal knob and ferrule. The knob can be removed to reveal a ceremonial Mason's sword and scabbard with a plain steel blade signed "TOYLE & Co. LONDON". This first rate relic of the Templar Knights is imbued with symbolism and one of the most powerful Masonic symbols. H. 2" x 1 1/2", O.L. 35", the sword 33 1/4", the blade 28"  
**\$1000-\$2000**

**92. Memento Mori Ivory Cane**

19th Century-Substantial pistol-grip ivory handle carved with a human skull and bones on an ebony shaft with a long and finely chased and gilt metal collar and iron ferrule. H. 3 1/2" x 1 3/4", O.L. 36"  
**\$1500-\$2000**

**93. Dagger Cane**

Ca. 1890-Black horn Derby handle on a Kongo wood shaft with a white metal collar and ferrule. 11 3/4" long flat and polished steel blade which holds in its chamber by friction. H. 5" x 1 3/4", 34 1/4"  
**\$400-\$600**

**94. Umbrella System Stick Cane**

Hugendubel Patent, 1920 -Metal and wood bamboo design with an unscrewing crook handle, full retractable umbrella with original and intact black silk lining. H. 5 1/4" x 5", O.L. 34 3/4"  
**\$300-\$400**

**95. Art Nouveau Dress Cane**

Ca. 1910-Well modeled L-shaped silver handle with stylized flower and curvaceous engravings struck with a German 800 hallmark, fruitwood shaft with embedded Tula-Silver collars and a metal ferrule. Used with few dents. H. 4 1/2" x 2 1/2", O.L. 35 1/2"  
**\$400-\$500**





96.

**96. French Monkey Jockey Cane**

19th Century-Sizeable ivory knob carved to depict a monkey's head with stretched, pinned ears and rosewood riding cap. The knob comes on a select, full bark Malacca shaft with an ivory ring collar and a horn ferrule. Superb condition. H. 2 3/4" x 2", O.L. 39 1/4" \$1,000-\$1,500

**97. Cazal Gold & Ivory Dress Cane**

Ca. 1850-18 karat yellow gold end cap on a single piece, faux sprig ivory shaft with a metal collar. The shaft has a secured crack, which has been professionally repaired, is stamped "CAZAL". Well known for his elegant accessories and one-of-a-kind canes and umbrellas. Cazal was indeed a famous manufacturer from Paris who exhibited at the Great Exhibition. H. 3/4" x 1/2", O.L. 36" \$1,800-\$2,800



97.

**98. Ivory Dress Cane**

Ca. 1870-Well done heraldic style carving with a crown and "S" initial in high relief, ebony shaft and no ferrule. Great detail and well-aged surface. 3 1/2" x 1 1/2", O.L. 35 1/4" \$600-\$1,200

**99. Art Nouveau Dress Cane**

Ca. 1900-Derby shaped silver handle with applied Art Nouveau floral ornaments and engraved with the presentation "Dein lieben Präsidenten z. ....tage, gewid. M.G.V Cäcilia". This large sized handle with silver hallmarks and maker's mark distills pretty much of the spirit of its day. It was used and shows few dents and comes on an ebony shaft with a horn ferrule. German hallmarks. H. 5 1/2" x 3", O.L. 36" \$500-\$1,000

**100. Ivory Thanksgiving Cane**

Late 19th Century-Rounded ivory knob with an encircling ring of various fruits and vegetables and a four leafed clover, well dressed malacca shaft and an ivory ferrule. H. 2 1/4" x 2", O.L. 37 1/4" \$600-\$1,200



98.



99.



100.





**101.**

**101. Oriental Parade Cane**

20th Century-Ebony cane with a ball knob lavishly embellished with mother of pearl inlay in various diamond patterns, gilt brass collars and ferrule. Extremely decorative and unused cane.

H. 1 3/4" x 1 3/4", O.L. 36 1/2"

**\$500-\$800**

**102. Ivory Day Cane**

19th Century-Carved ivory monkey and crab on a rock in the traditional Japanese accurate detail, ebony shaft with a silver collar and a silver ferrule. H. 4 1/4" x 2 1/4", O.L. 34 1/2"

**\$800-\$1,200**

**105.**

**102.**

**103.**

**104.**

**106.**

**103. Nephrite Dress Cane**

Late 19th Century-The jade ball handle of a deep spinach green color, gilt collar, dark rosewood shaft and a horn ferrule. Russian. H. 1 3/4" x 1 3/4", O.L. 38"

**\$600-\$800**

**104. Silver Dress Cane**

Ca. 1900 Large silver Opera handle with hammered surface and rich Baroque foliate and scrolls on an ebony shaft with a horn ferrule. German hallmarks.

H. 4" x 2 3/4", O.L. 35 3/4"

**\$500-\$1,000**

**105. Figural Staghorn Cane**

Ca. 1880-L-shaped handle with a finely carved horned Mephistopheles head on one side and an antelope head on the other. Both are well integrated in the natural shape of horn and highlighted with inset glass eyes. Probably of the Alps region,

hardwood shaft with a metal collar and ferrule. H. 3 3/4" x 3 1/4", O.L. 38 1/4" **\$400-\$600**

**106. Lapis Lazuli Dress Cane**

Early 20th Century Blue lapis lazuli vertically stretching in part hexagonal shape, silver collar, fruitwood shaft and a horn ferrule. H. 2 1/2" x 1", O.L. 37 1/2"

**\$400-\$600**



**107.**

**110.**

**108.**

**112.**

**109.**

**111.**

**107. Viennese Dress Cane**

Ca. 1880-A large L-shaped silver handle ornate in the Baroque taste and struck with Austro-Hungarian hallmarks, ebony shaft and a horn ferrule. H. 3 1/2" x 2 3/4", O.L. 36"  
\$400-\$600

**108. Japanese Export Bamboo Cane**

19th Century-Straight bamboo shoot with a shaved natural root bulb as knob and a white metal ferrule. The smooth bamboo is engraved with a fierce wild animal staring at a coiled dragon. Two butterflies and a signature near the bottom. Ol. 34"  
\$300-\$400

**109. Ivory Figural Ball Cane**

Late 19th Century-French Japanned Style carving with a couple in traditional clothes, malacca shaft with a turned ivory ring collar and a horn ferrule. H. 1 3/4" x 1 3/4", O.L. 38"  
\$500-\$1,000

**110. Leather Washer Cane**

19th Century-Flat pistol shaped horn handle with a notch on a stacked leather washer shaft with a steel ferrule. The notch probably accommodated at a certain time a steel blade and made of the cane a redoubtable hatchet. H. 3 1/2" x 2 3/4", O.L. 37"  
\$400-\$500

**111. Silver Dress Cane**

Ca. 1880-L-shaped silver handle delicately chased Art Nouveau floral, rosewood shaft and a horn ferrule. Viennese Hallmarks. H. 3 3/4" x 2 3/4", O.L. 35 3/4"  
\$400-\$500

**112. Shotgun System Cane**

Ca. 1885-A buffalo horn handle, push-button working mechanism, exotic wood shaft with a metal interior, pull-cock mechanism, original stopper brass ferrule H. 4" x 3", O.L. 35"  
\$1,500-\$2,000



**113.**



**118.**



**114.**



**115.**



**116.**



**117.**



**113. Shotgun Cane**

Ca. 1865-Rosewood handle with metal straps, iron mechanism with push and lock system, working condition, site near the end of the shaft and no ferrule  
H. 3 1/2" x 1 1/2", O.L. 34"  
**\$1,200-\$1,800**

**114. French Gun Cane**

Ca. 1895-Nickel plated handle which is incised with the number 20, shaft screws to handle, plunger style ferrule which cocks the working cane, metal shaft with brass beaded site and an original plunger ferrule-H. 3 1/2" x 4 1/2", O.L. 34 1/2"  
**\$1,200-\$1,800**

**115. Ivory Dress Cane**

Ca. 1885-A walrus ivory handle with a carved bulldog, sterling belt and buckle collar, Malacca shaft and a brass ferrule-H. 3" x 4", O.L. 34"  
**\$400-\$600**

**116. Ivory Dress Cane**

Ca. 1890-A carved ivory two piece handle with a pair of striations where the handle joins, ribbed silver metal collar, exotic wood shaft and a horn ferrule-H. 4" x 5", O.L. 37"  
**\$300-\$500**

**117. Hog Ivory Dress Cane**

Early 20th Century-A large tusk which has been carved with a hunting scene of a dog and wild boar, small ivory collar, exotic wood shaft and an ivory ferrule  
H. 5 1/2" x 3", O.L. 35"  
**\$500-\$600**

**118. Dog Dagger Cane**

Ca. 1890-An ivory handle with two color glass eyes, white metal collar, four sided 7" dagger, stepped wood shaft and a bi-metal ferrule  
H. 1 1/2" x 1 1/2", O.L. 35"  
**\$500-\$700**



120.

**119. Nautical Dainty Cane**

Ca. 1865-A carved bone handle, four baleen spacers, hexagonal and cylindrical whalebone shaft-H. 1 1/2" x 7/8", O.L. 36"  
\$500-\$600

**120. Ivory Dress Cane**

Ca. 1885-An ivory ball atop, a silver and copper ornate collar, ebony shaft and a metal ferrule-H. 1" x 1", O.L. 40"  
\$350-\$500

123.



**123. Folk Art Snake Cane**

Ca. 1850-An unusual early American Folk cane with some appearance of it's original decoration, this unique design was made from one piece of wood with only a small metal ferrule O.L. 38"  
\$400-\$700

121.



**121. Bone Dress Cane**

Ca. 1840-A two piece carved bone handle, copper collar, Malacca shaft and a 3" brass and iron ferrule-H. 3 1/2" x 4 1/2", O.L. 33"  
\$400-\$600

124.



**124. Hog Ivory Sword Cane**

Early 20th Century-A carved tusk with two color glass eyes, white metal spring collars with a 25" two sided blade which has blood grooves, natural branch shaft and a metal ferrule H. 6 1/2" x 5", O.L. 34 1/2"  
\$600-\$1,000

122.



**122. Bamboo Sword Cane**

Ca. 1860-Bamboo handle, metal collar, 21" 4 sided blade, bamboo shaft and a replaced metal ferrule-H. 3/4" x 4 1/2", O.L. 33 1/2"  
\$300-\$500

119.





**125. Bone Dress Cane**

Ca. 1890-A two piece bone handle with brass tacks, brass collar, Malacca shaft and a metal ferrule-H. 3 3/4" x 4 3/4", O.L. 33"  
**\$300-\$400**

**126. Lion Dress Cane**

Ca. 1890-A two piece ivory and exotic wood handle which has a high relief carved lion, ornate gold-filled collar, honey malacca shaft and a horn ferrule  
 H. 4 1/4" x 1 1/4", O.L. 35"  
**\$500-\$700**

**127. Full Ivory Dress Cane**

Early 20th Century-A full ivory segmented cane with original patina, 4 segments-O.L. 36"  
**\$500-\$700**

**128. Art Nouveau Ivory Cane**

Ca. 1890-A beautifully carved one sided handle, silver metal collar, ebony shaft and an ivory ferrule  
 H. 8" x 1 3/8", O.L. 36"  
**\$500-\$600**

**129. Ivory Dog Cane**

Ca. 1900-A carved ivory dog with two color glass eyes, ornate silver collar, ebony shaft and a horn ferrule-H. 3 3/4" x 2", O.L. 35 1/2"  
**\$400-\$700**

**130. Air Gun Cane**

Ca. 1885-A nice example of a blow dart style of air gun, working and locking mechanism, container style handle in original working condition, stepped bamboo shaft, locking bullet chamber and an original spring loaded iron ferrule  
 H. 1 3/4" x 1", O.L. 34"  
**\$1,500-\$2,500**



**131.**

**132.**

**133.**

**135.**

**134.**

**136.**

**131. Ivory Horse Dress Cane**

Early 20th Century-A highly carved hippo ivory horse with two color glass eyes, white metal collar, maple shaft and a horn ferrule  
H. 4 1/4" x 2", O.L. 35"  
\$700-\$1,200

**132. Art Deco Ivory Dog Cane**

Ca. 1920-A carved ivory hound with two color glass eyes, ornate silver collar, thick ebony shaft and a bi-metal ferrule-H. 4 1/2" x 1 5/8", O.L. 36"  
\$800-\$1,000

**133. Ivory Lion Dress Cane**

Ca. 1875-A unique carved ivory handle, small ivory collar, ebony shaft and a horn ferrule  
H. 2" x 3 1/2", O.L. 36"  
\$400-\$600

**134. Horse Sword Cane**

Ca. 1885-Carved ivory horse with two color glass eyes, silver metal collar, 4-sided 11" dagger, hardwood pyro decorated shaft  
H. 3 1/4" x 2 1/4", O.L. 36"  
\$500-\$700

**135. Blackthorn Sword Cane**

Ca. 1935-A nice example with original finish, signed 12" blade MIK. Sheffield England, coin silver British hallmarked collar, blackthorn shaft and a metal ferrule-H. 5" x 5 1/2", O.L. 37"  
\$400-\$600

**136. Ivory Bulldog Cane**

Ca. 1880-An elephant ivory handle, silver metal collar, flexible Malacca shaft and a bi-metal ferrule-H. 3" x 4", O.L. 33 1/2"  
\$400-\$600



**137. Ivory Race Horse Cane**  
 Late 19th Century-A unique carved handle with wonderful patina and two color glass eyes, hallmarked gold collar, Malacca shaft and a horn ferrule  
 H. 4" x 5", O.L. 37 1/2"  
 \$500-\$700

**138. Parrot Sword Cane**  
 Early 20th Century-Carved ivory parrot or macaw with glass eyes, 9" two sided screw in blade, snakewood shaft and an ivory ferrule-H. 1 1/2" x 4 3/4", O.L. 36"  
 \$500-\$700

**139. Blow Gun Pistol Cane**  
 Ca. 1895-Horn handle, turning metal collar with a drop trigger, working locking signed mechanism, probably a 410, exotic wood shaft and a removable ferrule  
 H. 4 1/4" x 3", O.L. 36"  
 \$1,000-\$1,500

**140. Gold Filled Dress Cane**  
 Ca. 1900-An ornate gold filled handle, ebony shaft and a metal ferrule-H. 3 1/4" x 2 1/2", O.L. 34"  
 \$250-\$400

**141. Art Deco Dress Cane**  
 Ca. 1920-A stylized hound which is nickel silver, ebonized shaft and a metal ferrule  
 H. 4 1/2" x 3 1/2", O.L. 34 1/2"  
 \$300-\$500

**142. Massive Ivory Lion Cane**  
 Mid 20th Century-An elephant ivory carving with two color glass eyes, ivory collar, thick exotic wood shaft and an ivory ferrule  
 H. 6 1/4" x 2 1/4" x 2 1/2", O.L. 36"  
 \$1,000-\$1,500



144.



143.



146.



145.



147.

**143. Native American Ivory Cane**

Early 20th Century-A carved ivory handle done in high relief with feather bonnet, ebony shaft and an ivory ferrule-H. 4 1/2" x 1 1/4", O.L. 36" \$500-\$1,000

**144. Art Nouveau Nude Cane**

20th Century-A coin silver handle with British Hallmarks for Keith Cowie, ebony shaft and a horn ferrule-H. 4" x 4", O.L. 36 1/2" \$500-\$700

**145. Ivory Dress Cane**

Ca. 1885-A uniquely carved ivory handle with leafs, flowers etc., ornate silver metal collar, thick ebony shaft and a 1 3/4" metal ferrule-H. 5" x 2", O.L. 36" \$500-\$700

**146. Bamboo Sword Cane**

Ca. 1935-A fine condition sword cane with a 4 sided 10 1/2" blade, gloss finish on handle and bamboo shaft, metal ferrule H. 4 1/2" x 6 1/2", O.L. 36" \$300-\$500

**147. Garnet and Sterling Dress Cane**

Ca. 1925-An Art Deco dress cane with over 30 garnets set in a cross pattern, hallmarked but unreadable sterling handle, one garnet missing, ebony shaft and a metal ferrule-H. 3/4" x 3 1/2", O.L. 36" \$500-\$700





**151.**

**149.**

**148.**

**150.**

**152.**

**148. Ivory Dress Cane**

Late 19th Century-A carved ivory handle, ornate brass collar, Malacca shaft and a horn ferrule

H. 3 1/2" x 3", O.L. 36"

**\$300-\$500**

**149. Silver Compartment Cane**

Ca. 1925-A British Hallmarked silver handle with a hinge lid, ebony shaft and a bi-metal ferrule

H. 7/8" x 3 1/4", O.L. 36"

**\$300-\$500**

**150. Victorian Dress Cane**

Ca. 1870-A bright cut silver plated handle with high relief work of a bird and a stag, walnut stained bamboo shaft and a bi-metal ferrule-H. 4" x 1 1/2", O.L. 35"

**\$200-\$300**

**151. Bone Sword Cane**

Ca. 1850-A two piece carved bone handle with a tortoise shell end cap, marsh deer and palm tree, brass collar, 4-sided 21" original blade, split Malacca shaft and a metal ferrule

H. 3 3/4" x 4 3/4", O.L. 33 1/2"

**\$700-\$1,000**

**152. Gold-filled Dress Cane**

Dated 1892-An ornate Art Nouveau handle, ebony shaft and a bi-metal ferrule-H. 3 3/4" x 2 1/2", O.L. 34 1/4"

**\$300-\$400**



**153.**



**154.**



**155.**



**156.**

**153. Gold Quartz Dress Cane**  
 Ca. 1900-A signed sterling handle with flowers and leaves, gold quartz disc atop, Malacca shaft and a horn ferrule-H. 1 ¼" x 1 ¾", O.L. 34 ½"  
 \$1,200-\$1,800

**154. Bulldog Sword Cane**  
 Ca. 1925-A carved bulldog with a bone derby hat, 7" 4-sided screw-in blade, exotic wood shaft and an ivory ferrule-H 4 ¾" x 1", O.L. 36"  
 \$400-\$700

**155. A Group of Four Antique Ivory Canes**  
 \$500-\$800

**156. Two Antique Ivory Going Ashore Canes**  
 \$400-\$600

**157. Five Antique Canes of Various Animals in Wood and Ivory**  
\$700-\$1,000

**158. Ivory Lion Dagger Cane**  
Ca. 1925-A carved walrus ivory handle with two color glass eyes, 4-sided 7" blade, exotic wood shaft and a bi-metal ferrule  
H. 2 1/2" x 3 3/4", O.L. 35"  
\$500-\$700

**159. Three Assorted Bone and Ivory Canes**  
\$500-\$700

**160. Folk Art Snake Cane**  
Early 1900-A carved oak shaft with two snakes which have glass eyes, original black varnish and a metal ferrule-O.L. 36"  
\$200-\$400



**159.**

**160.**



**157.**

**158.**

**161. Group of Three Folk and Country Canes**  
\$200-\$300

**162. Group of Five Canes Including a Compartment Cane, Indian Sword Cane and a Glass Cane**  
\$300-\$500

**163. Under Hammer Gun Cane**  
Ca. 1860-An original and working under hammer gun cane, original handle with iron straps and stock, barrel has rifling, brass ferrule with oak and brass tamper, possibly a 45 caliber  
H. 3 1/4" x 6", O.L. 36", Stock 12"  
\$1,500-\$2,500

**164. Under Hammer Shotgun Cane**  
Ca. 1870-A working under hammer shotgun cane with a brown finish and original handle, 12" add on stock and no ferrule, barrel has what appears to be British proof marks, probably 50 cal.  
H. 3 1/2" x 6", O.L. 34"  
\$1,300-\$1,800



**161.**



**162.**



**163.**



**164.**

**165. Walnut Cane Stand-Modern**

The fan stand will hold 12 canes.

33" x 29 1/2" x 7"

\$400-\$600

**166. Modern Circular Cane Stand**

Holds 15" canes-28" x 15"

\$300-\$500

**167. Flat Wall Cane Cabinet**

Ca. 1900-An H. Kruse and Co. cane case of Cincinnati OH holds 48 canes

41" x 26" x 11"

\$1,000-\$1,500

**168. Large Oak Cane Case**

Ca. 1900-Made by the Nashville Co., Nashville TN, two lift tops, opening door in front, hold 64 canes

23" x 24" x 50"

\$1,500-\$2,500

**167.**



**166.**



**168.**



**165.**



**169. Oak Cane Case**

Ca. 1900-A nice example with opening door and Victorian stick and ball dividers, holds 49 canes, about a 3" crack in rear glass-41" x 21" x 21" \$1,000-\$2,000



**169.**

**170. Erotic Ivory Circus Girl Balance Toy**

20th Century- A unique ivory balance toy carved with museum quality work. The balance staff is a ribbed carved cone with a penis atop with a walnut base (detailed photos website). The circus girl is a very unique carving both front and back with metal rods that extend to an ivory pair of balls. The circus girl has a smile on the face and balances in a most unusual place on the penis. Cone 7 1/4" x 3 1/2", Circus girl 4 1/2" x 2 1/4", Balls 1 1/4" diameter, O.L. 9 1/4" x 9 1/2" x 3 1/2" \$5000-\$8000

**171. The Mandel Cane Collection" by: Youssef Kadri-Mint condition. \$100-\$150**



**171.**



**170.**





THE LIFETIME CANE COLLECTION OF  
**HENRY "HANK" BARTH**

***Absolute Estate Auction***

**SATURDAY,  
SEPTEMBER 8TH  
11:00 AM CST**

**AIRPORT MARRIOTT  
NASHVILLE "MUSIC CITY", TENNESSEE**

*Make your plans now to receive the best rates to attend this event. The Airport Marriott (615-889-9300) will offer a special rate for the auction.*

*The Nashville International Airport has fine connections throughout the world. Nashville also has much to offer for a fine weekend of fun.*

Mr. Barth was an avid cane collector and cane historian for many years and since his death we have been working closely with the estate to offer this World class collection.

This will be an opportunity of a lifetime to add to your collection. While working as one of the greatest industrial movie producers he amassed a very important and diverse collection. The offering will consist of over 350 canes including most categories known including nautical, Tiffany, porcelain, enamel, system sticks, ivory, silver and gold dress, weapons, historical and much more.

Many of the fine canes that you have bid on at various auctions in the last ten years and did not win will be part of this collection. Hank was always the top bidder on an auction lot that he wanted for his collection. All canes will be sold without reserve to the highest bidder.

Preview and brunch will be the morning of the sale at 9:00am. No consignments will be accepted for this auction.



Kimball M. Sterling, Inc. (TFL-1915)  
125 West Market Street  
Johnson City, Tennessee 37601  
kimballsterling @ earthlink.net  
423.928.1471

Photography by James Price

Catalog Design by KT Design, LLC  
www.kristaft.com

© Copyright 2011 Kimball M. Sterling, Inc.