

KIMBALL & VICTORIA STERLING PRESENT A

# SUMMER CANE AUCTION

SATURDAY, AUGUST 2ND

11:00 AM EST



# TERMS & CONDITIONS

1. Cash or check. A 20% buyers' premium will be added to the hammer price as part of the sale price for all bidders. Internet bidders will pay 23%. We reserved the right to hold purchases until the buyers checks clears if buyer is not known by us. Bank letter of credit is acceptable.

2. Mail or phone bids are accepted; the firm may require a deposit.

3. Kimball M. Sterling, Inc. has endeavored to catalog and describe the property correctly. All property is sold as is and neither the auction company nor the consignor will be responsible for descriptions, genuineness, provenance or condition of the property. No statement in the catalog made orally at the sale or otherwise shall be deemed to be a warranty, representation, or an assumption of liability.

4. In the event of any dispute between bidders, the auctioneer shall have total discretion to determine the successful bidder, in which his determination shall be final or to re-offer and resale the article in dispute. Title of the item or items purchased by the bidder will pass at the fall of the gavel and declaration of bidder. This is not an approval auction. All measurements are approximate.

5. Principal auctioneer: Kimball M. Sterling #2467. B. Elizabeth Sterling, auctioneer # 5757. Firm Kimball M Sterling Inc. TFL-1915

6. Bidders may bid live on the Internet by visiting <http://www.auctionauction.com>. You may also view the auction at this site and bid by phone.

7. Communications:  
Telephone 423-928-1471.  
Fax 423-928-2816.  
Cellular 423-773-4073, 423-773-4072.  
Email [kimballsterling@earthlink.net](mailto:kimballsterling@earthlink.net)

8. We do not ship protected items overseas but anything else will be shipped by the UPS Store in Johnson City. We can however hold your item till you or a friend visit's the USA and you can take your items as a personal item or we can ship to a friend in the USA.

9. Kimball M. Sterling, Inc. will not be held responsible for bids received on the day of the auction, unexecuted absentee bids, phone bidders not contacted or slow Internet bids. Although we do attempt to get all bids executed problems do occur. There will be no recourse from the bidder. We will not be responsible for items left on our location for over 30 days.

10. Sale will be conducted at 125 West Market Street, Johnson City, Tennessee. 37604. Announcements day of the sale take precedence over pre-sale advertising. Any litigation that pertains to this auction will be conducted in the county of Washington in Tennessee and is agreed upon by registering for this auction.

11. Airport is the Tri-Cities Airport, which is approximately 20 miles from the gallery. Internet catalog and live bidding available at [www.auctionauction.com](http://www.auctionauction.com) Best Western Hotel: 423-282-2126. A very fine hotel which offers Sterling Auction a discount rate is the Carnegie Hotel 1216 W State of Franklin Rd, (423) 979-6400.

12. Please call for condition report on sale lots or email us. We do send out multiple photos by email of any lot in the auction. By registering for this auction you accept the terms.

13. Parking service is free.

KIMBALL & VICTORIA STERLING PRESENT A

# SUMMER CANE AUCTION

**SATURDAY, AUGUST 2ND**  
11:00 AM EST

**PREVIEW**

**SATURDAY, AUGUST 2ND AT 9:30 AM EST**

**FRIDAY, AUGUST 1ST - 12:00-5:00 PM**

**WWW.AUCTIONAUCTION.COM**

Live on the internet at  
**LIVEAUCTIONEERS.COM**

Two Time Winner of Best of Show  
from the National  
Auctioneers Association

Kimball M. Sterling Auction Gallery  
125 West Market Street  
Johnson City, Tennessee 37601  
kimballsterling @ earthlink.net  
423.928.1471



**1. Ivory Hound Dog Dress Cane**

Ca.1910- Carved ivory handles with three hounds with glass eyes, ornate gold-filled collar, exotic wood shaft and a horn ferrule- H. 4 1/2" x 1 1/4", O.L.- 36" \$700-\$900



1.

**2. Whalebone and Wood Scrimshaw Cane**

Mid-19th- A wonderful massive cane with the handle carved and inlaid with abalone to look much like a sterncastle, 1 1/4" diameter shaft half column carved, baleen spacer collar and never had a ferrule. H. 2" x 2 1/2", O.L.- 37 1/2", 1 1/4" D. \$4,000-\$6,000

2.



**3. Dog Glove Holder Dress Cane**

1930- A well carved dog with two color glass eyes, signed sterling collar, push button lower jaw, hardwood shaft and metal ferrule. H 2 3/4" x 2", O.L.- 36" \$400-\$500

3.



**4. Asian Bear and Monkey Ivory Cane**

1890- A large bear playing with two monkeys, Japan, signed sterling collar, massive bamboo shaft and a metal ferrule. H. 1 1/2" x 2 3/4", O.L.- 35 1/2" \$700-\$1,000

4.





5.

**5. Ivory Fish Cane**

20th Century Pre-ban- A massive ivory "Monster Fish", probably Asian with carved teeth and tongue, glass eyes, three ebony and ivory spacers, thick ebony shaft, and an ivory ferrule. H. 5 1/4" x 1 1/2", O.L.- 36 1/2"

**\$2,200-\$2,600**

**6. Ivory Knob Dress Cane**

Dated 1878- A nice original ivory knob dated presentation to it first owner R W Hallum, silver collar, ebony shaft and a metal ferrule. H. 1 1/2" x 2 1/2", O.L.- 34"

**\$300-\$500**

**7. Powerful Stag Puma Dress Cane**

20th Century- Museum quality modern carving of mother and child puma playing, probably elk horn, signed sterling collar, exotic wood shaft and a metal ferrule. H. 5 1/2:" x 4", O.L.- 36"

**\$700-\$1,000**

8.



**8. Large Ivory Elephant and Snake Cane**

20th Century Pre-ban- Nicely carved elephant ivory handle ornate silver metal collar, aged malacca shaft, and a horn ferrule. H. 2 1/4" x 4 1/4", O.L.- 35 1/2"

**\$2,500-\$3,000**



7.

6.



**9. Japanese Ivory and Bird Cane**

Ca. 1890-A precise carved ape and bird handle with beaded glass eyes, rat and frog hiding underneath bird's wing, silver metal collar, exotic shaft and a horn ferrule- H. 1 1/2" x 4", O.L.- 35 1/2" **\$900-\$1,200**

9.

**10. Massive Ivory Crook Cane**

Ca. 1910-A large elephant ivory handle, silver metal collar, ebony shaft and a brass ferrule- H. 5 1/2" x 3 3/4", O.L.- 35 3/4" **\$600-\$700**

11.

**11. Ivory Medusas Nude Cane**

Ca. 1890-A carved nude Medusa with a ruby and two emeralds inlaid in her hair, ornate sterling collar, ebony shaft and a metal ferrule- H. 2 x 4 1/4", O.L.- 35 3/4" **\$1,500-\$2,000**

**12. Ivory Turk's Knott Cane**

20th Century Pre-ban-Carved ivory elephant handle, small horn collar, ebonized shaft and a metal ferrule- H. 2" x 1 3/4", O.L.- 36 1/4" **\$400-\$500**

**13. Ivory Dress Cane**

Ca. 1890-A carved Art Nouveau handle, signed sterling collar, stained bamboo shaft and a metal ferrule- H. 4 1/2" x 1 1/4", O.L.- 35 3/4" **\$300-\$400**

10.

12.

13.





15.



16.



17.

14.



18.



19.

**14. Folk Art Vine Cane**

Ca. 1925-A one piece carved branch with rabbits, lizards and foliage, metal ferrule- O.L.- 35 1/4" **\$300-\$350**

**15. Watch Cane**

Ca. 2000-A modern watch cane, silver plate handle and collar ebony shaft and a brass ferrule- H. 1 3/4" x 4", O.L.- 37" **\$250-\$300**

**16. Gold-filled Presentation Cane**

Ca. 1910-A gold-filled handle with various names engraved, ebony shaft and a metal ferrule- H. 1" x 1 1/2", O.L.- 35 1/2" **\$200-\$300**

**17. Art Nouveau Ivory Cane**

Ca. 1890-An elephant ivory handle with silver metal overlay, ebonized shaft and a metal ferrule- H. 4 1/2" x 1 1/2", O.L.- 35 1/2" **\$300-\$400**

**18. Ivory Neptune and Nude Maiden Cane**

20th Century Pre-ban-A massive carved ivory handle where the two main subjects are entwined, a large carp is looking up towards the pair, signed sterling collar, massive malacca shaft and a metal ferrule- H. 2" x 5 1/4", O.L.- 36" **\$2,500-\$3,500**

**19. Ivory Snake and Vine Cane**

Ca. 1900-An ivory snake entwined throughout the vine, engraved solid silver collar, vine shaft and a metal ferrule- O.L.- 32 1/2" **\$300-\$500**

**20. Ivory Dress Cane**

Ca. 1900-A stained ivory handle with an ornate gold filled end cap,, matching gold-filled ornate collar, ebony shaft and a metal ferrule- H. 5" x 1 1/2", O.L.- 36 1/2"

**\$350-\$450**



20.

**21. Ivory Hand and Ball Cane**

Ca. 1890-A nicely carve hand and ball handle, silver metal collar, ebonized shaft and a metal ferrule- H. 3 1/4" x 1 3/4", O.L.- 33 1/2"

**\$400-\$450**



21.

22.

**22. Ivory Dress Cane**

Ca. 1920-Formal tuxedo cane, small gold-filled collar, ebonized shaft and an ivory ferrule H. 1" x 2", O.L.- 35 1/4"

**\$200-\$300**



23.

**23. Inuit Walrus Eagle Cane**

Early 20th Century-A carved walrus ivory eagle with abalone inlay, signed sterling collar, mahogany shaft and an ivory ferrule- H. 4 1/2" x 2", O.L.- 36"

**\$600-\$800**



**24. Ivory North American Animal Cane**

20th Century Pre-ban-A unique carved handle with various indigenous animals, ivory and ebony collars, ebony shaft and an ivory ferrule- H. 2" x 1 3/4", O.L.- 36 1/2"

**\$450-\$600**



24.

**25. Silver Nobleman's Cane**

Ca. 1880-A cast high relief silver handle with various scenes of men on horses dogs hunting and fighting, rich snakewood shaft and a 3 1/2" brass ferrule- H. 1 1/2" x 2 1/2", O.L.- 39 1/2"

**\$900-\$1,200**



25.



26.



**26. Stag Snake Cane**

Ca. 1935-ban-Carved stag snake with red glass eyes, signed sterling collar, hardwood shaft and an stag ferrule- H. 4 3/4" x 1 1/2", O.L.- 36" \$400-\$500

27.



**27. Patriotic Skull Cane**

20th Century-A contemporary disc skull handle, painted metal shaft and a stopper ferrule- O.L.- 34" \$150-\$250

29.



**28. Alligator Crook Cane**

Ca. 1930-A carved Jacksonville gator on the orangewood shaft and a metal ferrule- O.L. 35" \$200-\$300

28.



**29. German Ivory Hunt Cane**

Late 19th Century-A massive carved handle of a gentleman with his hounds attacking two wild massive boars, ivory striations, massive malacca shaft and a metal ferrule- H. 2" x 4 3/4", O.L.- 37" \$2,500-\$3,000

30.



**30. Nautical Dress Cane**

Ca. 1865-A whale's tooth handle with a baleen disc atop, silver metal collar, twigspur shaft with bark and a metal ferrule- H. 2" x 1 1/2", O.L.- 36" \$350-\$450

**31. Alligator Folk Cane**

Ca. 1930-A full length carved gator, silver metal collar, orange tree shaft and a metal ferrule- H. 5" x 1 3/4", O.L.- 36" \$250-\$350

31.



### 32. Ivory Horse Cane

Ca. 1900-A large carved ivory horse with two color glass eyes, silver metal collar, exotic wood shaft and a metal ferrule- H. 4 1/2" x 1 1/2", O.L.- 37 1/2"  
**\$1,200-\$1,500**



32.

### 33. Silver Horse and Dog Cane

Mid 20th Century-A high relief casting with glass eyes, signed sterling collar, ebony shaft and a metal ferrule- H. 4 1/2" x 2", O.L.- 36"  
**\$500-\$600**



33.

### 34. Tiffany Sterling and Tortoise Dress Cane

Ca. 1900-A silver handle which is marked Tiffany and Co. Makers-Sterling, Tortoise shaft with shrinkage at top and bottom and a horn ferrule- H. 1" x 2", O.L.- 36"  
**\$2,000-\$3,000**



### 35. Scrimshaw and Whalebone Cane

Ca. 1870-A whalebone sea monster atop with baleen eyes and sharp teeth, baleen spacers and no ferrule- H. 2 3/4" x 1 1/2", O.L.- 34 1/2", 5/8" D.  
**\$1,000-\$1,500**



35.



34.



36.

37.

**36. Scrimshaw  
Whalebone Cane**

Ca. 1870-A sailor made whale's tooth handle with baleen and wood spacers, whalebone shaft and never had a ferrule- H. 3 1/2" x 6 1/2", O.L.- 33 3/4", 5/8" D.  
**\$1,000-\$1,400**

**37. Scrimshaw  
Ivory Cane**

Ca. 1875-A carved Turk's knot whale's tooth handle with a separated crack, baleen spacers, whalebone shaft which one half is spiral carved and a small metal ferrule- H. 1 1/4" x 2 1/4", O.L.- 33", 3/4" D.  
**\$1,000-\$1,500**



39.

38.

**38. Scrimshaw  
Fist Cane**

Ca. 1870-A carved ivory fist and baton handle, whalebone shaft which half is carved hexagonally and never had a ferrule- H. 1 1/2" x 1 1/4", O.L.- 36", 3/4" D.  
**\$600-\$900**

**39. Scrimshaw  
Fist and Baton  
Cane**

Ca. 1875-Carved whale's tooth handle which is done in great detail, baleen collar, thick whalebone shaft and never had a ferrule- H. 1 1/2" x 1 1/4", O.L.- 36", 3/4" D.  
**\$1,000-\$1,400**

**40. Scrimshaw**

**Geometric Ivory Cane**

Ca. 1880-A carved ivory whale's tooth handle, cocoon wood spacers thick whalebone shaft and never had a ferrule- H. 1 1/2" x 4 3/4", O.L.- 37 1/4", 3/4" D.

**\$1,400-\$1,800**



**41. Scrimshaw Ivory Fidget Cane**

Ca. 1880-A whale's tooth handle with paint decoration found on Nantucket, nice fidget ring, baleen disc atop, exotic wood shaft and an ivory ferrule- H. 1 1/4" x 2 1/4", O.L.- 35 3/4"

**\$500-\$700**



**42. Scrimshaw Whale's Tooth Cane**

Ca. 1785-A massive carved whale's tooth handle with an inlaid silver coin atop, draped carving, whalebone eyelets, massive twigspur shaft and an ivory ferrule- H. 2" x 2 1/2", O.L.- 35 1/2"

**\$1,500-\$2,500**



**43. Scrimshaw Sailor's Cane**

Ca. 1870-Whale's tooth handle with a unique sea shell atop, four baleen spacers, palm wood shaft and a ivory ferrule- H. 1 3/4" x 5", O.L.- 34 1/4"

**\$1,300-\$1,600**





44.



45.

**44. Scrimshaw Inlaid Sailor's Cane**

Ca. 1800-A massive whale's tooth handle with nice patina, handspun brass collar, inlaid shaft with various natural items including ivory, tortoise, pearl etc., some are missing or cracked, fruitwood shaft with spiral and reeded carvings and a 3 1/2" ferrule- H. 2" x 2 3/4", O.L.- 32 1/2" \$1,500-\$2,000



**45. Scrimshaw Walrus Cane**

Ca. 1885-A stylized ivory handle with wood bands and inserts, segmented shaft with ivory and exotic wood spacers and a 2" ivory ferrule- H. 5" x 1 3/4", O.L.- 35" \$500-\$700

46.

**46. Two Scrimshaw Canes**

Ca. 1880-Both are whale's tooth handles and with long ferrules, twigsaur and thick bamboo shaft and original condition- Largest H. 1 1/2" x 1 1/2" 36 1/4" \$500-\$700



47.

**47. Two Scrimshaw Canes**

Late 19th Century-Both have whale's tooth handles, fine sailor's art has been applied to both handles, original shafts and one with a ferrule- Largest H. 1 1/2" x 1 3/4", 33" \$1,000-\$1,500

48.



**48. Two Scrimshaw Canes**

Ca. 1880-A pair of whale's tooth handle, both with early shafts and each has a ferrule-Largest H. 1 1/2" x 1 1/2", O.L. 33" \$500-\$700

**49. Two Scrimshaw Canes**

Ca. 1875-Both whale's tooth handles have a tortoise disc atop, one has pearl and ivory inlaid in the shaft and the a diamond cut piece of abalone, both sailor made canes have exotic wood shafts with ivory and brass ferrules- Largest H. 1 3/4" x 2 1/2", O.L.- 36" \$600-\$900

49.

50.

**50. Three Scrimshaw Canes**

Ca. 1880-Whale's tooth handles which were sailor made, original exotic wood shafts, one with a brass ferrule- Largest H. 1" x 1 3/4", O.L. 34" \$400-\$500

**51. Two Scrimshaw Ivory Canes**

Ca. 1880-A pair of whale's tooth handles, horn collars, twigspur and cocoon wood shafts and one with a horn ferrule- Largest H. 1 1/2" x 1 3/4", O.L.- 35 1/4" \$600-\$700

52.

**52. Two Scrimshaw Ivory Canes**

Ca. 1875-A pair of turned whale's tooth handles with silver metal collars, exotic wood shafts and three inch ferrules- Largest H. 1 1/2" x 2", O.L.- 35 1/4" \$400-\$600

51.

54.

**53. Pair of Ivory Canes**

Ca. 1900-One is ivory and the other is walrus, small silver spacers, baleen disc atop, ebony shafts and metal ferrules- Largest H. 1 3/8" x 2", O.L.- 35 1/2" \$400-\$500

53.

**54. Scrimshaw Ivory Canes**

Ca. 1880-Two whale's tooth handles, one with a silver disc atop, coin silver collars and eyelets, ebony and island wood shafts and one with a metal ferrule- Largest H. 1 1/2" x 1 3/4", O.L.- 35 1/2" \$400-\$600





59.

55.

**55. Three Ivory Dress Canes**

Late 19th Century-Nice original ivory handles and shafts- Largest H. 4" x 1 1/4", O.L.- 35 1/4"  
**\$400-\$500**

**56. Three Ivory Dress Canes**

Late 19th Century-Nice original ivory handles and shafts Largest H. 4 1/2" x 1 1/2", O.L.- 34 3/4"  
**\$400-\$500**



60.

**57. Gold Uncle Cane**

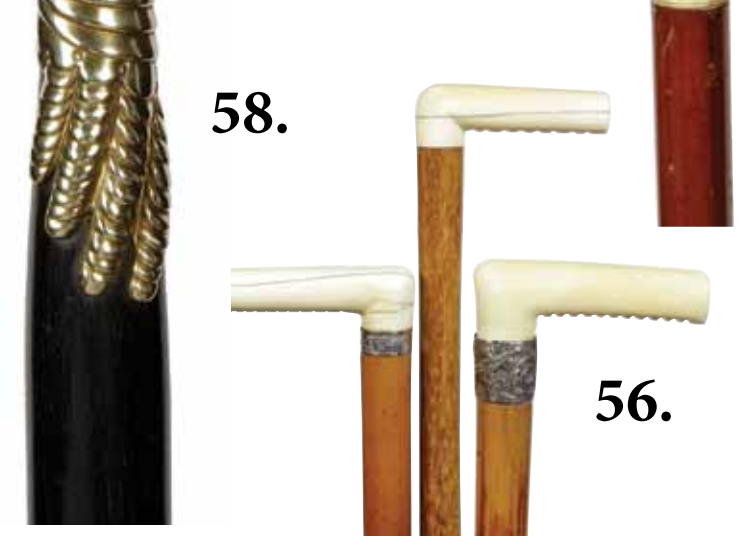
Ca. 1850-A large unmarked but tested gold handle with the presentation from "P. Busch to Big Uncle", gold diamond shaped eyelets, massive hardwood shaft ( 1 1/4") and an original iron ferrule- H. 1 1/4" x 1", O.L. 34 3/4"  
**\$700-\$1,000**



57.

**58. Gold Presentation Cane**

Ca. 1885-A gold-filled gauntlet presentation from "Colonel S. L. Forgay to George H. Clark", a very upscale cast gold-filled cane, ebony shaft and a metal ferrule- H. 1" x 3', O.L.- 36 1/2"  
**\$500-\$1000**



58.

56.

**59. Gov. Stark's Bone Cane**

Ca. 1890-A carved horse and trainer bone handle which belonged to Gov. Stark of Missouri in the 1930's with a letter of provenance, small silver collar, malacca shaft and a metal ferrule- H. 3 1/2" x 4 3/4", O.L.- 34 1/2"  
**\$500-\$800**

**60. Ivory Dog Cane**

Ca. 1890-A carved walrus ivory handle with a high relief carving of two dogs and hunting accessories, malacca shaft and no ferrule- H. 3 1/2" x 6 1/4", O.L.- 33 1/2"  
**\$400-\$600**

**61. Ivory Wolf Cane**

Ca. 1900-A large carved ivory wolf handle, Ornate silver presentation collar, malacca shaft and a metal ferrule- H. 5" x 2 1/4", O.L.- 36" \$1,400-\$1,800



61.

**62. Ivory Knob Cane**

Ca. 1880-A well aged ivory handle, coin silver collar, thick malacca shaft and a metal ferrule- H. 1 1/2" x 2 1/4", O.L.- 36" \$300-\$400



**63. Ivory Clown Cane**

Ca. 1910-A carved ivory handle which is signed "Merth", malacca shaft and a horn ferrule- H. 1 3/4" x 2", O.L.- 35 3/4" \$400-\$500



64.

**64. Erotic Lady Cane**

Early 20th Century-A carved ivory handle of a reclining lady on a bear rug, signed sterling collar, malacca shaft and a metal ferrule- H. 4 3/4" x 2 1/4", O.L.- 35 1/2" \$1,000-\$1,200

65.



62.



**65. Ivory Skull Cane**

20th Century Pre-ban-A large ivory skull with a gold tooth, "Brutalist" silver collars, thick ebony shaft and a staghorn ferrule- H. 2" x 2 3/4", O.L.- 36" \$1,000-\$1,300

66.



**66. Sjambok Crook Cane**

Ca. 1900-A rhino hide covered crook cane with a small metal ferrule- O.L. 35 1/2" \$700-\$800



63.





69.



68.

67.



**67. Ivory Sword Cane**

Ca. 1890-An ivory pommel handle, an 18" four sided blade which unscrews from the faux bamboo metal shaft and a brass ferrule- H. 1 1/2" x 3 3/4", O.L.- 35 1/2" \$400-\$500

**68. Scrimshawed Ivory Cane**

Ca. 1880-A large whale bone handle with baleen spacers, baleen collar, exotic wood shaft and an ivory ferrule- H. 1 1/2" x 8", O.L.- 35 1/2" \$1,000-\$1,200

**69. Ivory Dress Cane**

Ca. 1910-A two piece ivory handle, silver metal collar, ebonized shaft and a metal ferrule- H. 3 1/4" x 4", O.L.- 34 1/2" \$200-\$300



**70. Ivory Spaniel Cane**

Ca. 1880-A carved ivory spaniel with two color glass eyes, coin silver collar, thick malacca shaft and a horn ferrule- H. 3 1/4" x 2", O.L. 35 1/2" \$400-\$500



71.

70.



**71. Ivory Student Cane**

Ca. 1890-A high relief carved ivory handle, signed sterling collar, ebony shaft and a metal ferrule- H. 2" x 6 1/2", O.L.- 35 3/4" \$500-\$600

**72. Ivory and Silver Dress Cane**

Ca. 1890-An ivory Art Nouveau handle which has a silver overlay consisting of beetles and foliage, exotic wood shaft and an ivory ferrule- H. 4 1/2" x 1 3/4", O.L.- 36" \$700-\$800



72.

**73. Ivory Bird Cane**

20th Century Pre-ban-A carved ivory bird with two color glass eyes, silver metal collar, exotic wood shaft and a metal ferrule- H. 4" x 2", 36"  
**\$400-\$600**



73.

**74. A Tortoise and Ivory Dress Cane**

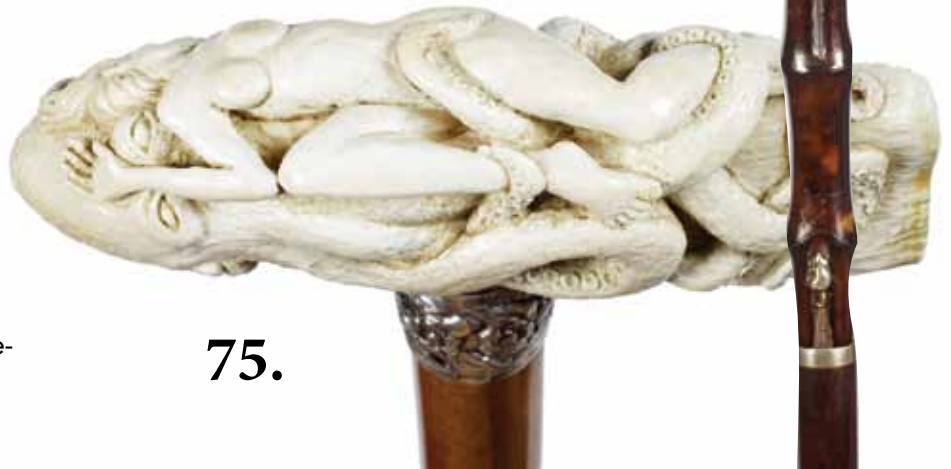
Ca. 1900-A unique tortoise shell handle with various silver animals attached, small silver collar, exotic wood shaft and a horn ferrule- O.L. 38 3/4"  
**\$2,500-\$3,500**



74.

**75. Massive Nude Whale's Tooth Handle**

20th Century Pre-ban-A 6 1/2" whale's tooth with a nude entwined by a large octopus, ornate signed silver collar, malacca shaft and an ivory ferrule- H. 6 1/2" x 3", O.L.- 36"  
**\$2,500-\$3,500**



75.

**76. Ivory Horse Cane**

Ca. 1900-A large carved "Dentzel" style horse with two color glass eyes carved in high relief, silver metal collar, thick ebony shaft and a metal ferrule- H. 4" x 2", O.L.- 37"  
**\$800-\$1,200**



76.





78.



77.

**77. Ivory Zodiac Ball Cane**  
Ca. 1910-A 3 1/2" in diameter ball with various animals and dragons with two color glass eyes, silver metal collar, thick ebony shaft and a metal ferrule- H. 3" x 3", O.L.- 36" \$800-\$1,200



**78. Geschützt Austrian Dress Cane**  
Ca. 1900-A fine Austrian presentation, inscription: Geschützt, with Joseph Ferenc imagery, crest and crown, sign: heavy weighted as a weapon,, snakewood shaft and a metal ferrule- H. 1 1/2" x 5 3/4", O.L.- 38 1/2" \$400-\$600



79.

**79. Bat Masterson Toy Cane**  
Ca. 1959-A nice example in mint condition of the cane that started many people collecting, hardwood shaft and a metal ferrule- H. 2 1/4" x 3 1/2", O.L. 30" \$100-\$200



**80. Gold Dress Cane**  
Dated 1871-A gold-filled dress cane Presentation from the Employees to their boss on Christmas Day, thick ebony shaft and a metal ferrule- H. 1 1/2" x 2 3/4", O.L.- 35" \$400-\$600



81.

**81. Ivory and Silver Dress Cane**  
Ca. 1890-An Art Nouveau silver overlay, silver metal collar, malacca shaft and a metal ferrule- H. 4 1/2" x 2 1/2", O.L.- 34 3/4" \$400-\$700



80.



82.

**82. Horn Dress Cane**  
Ca. 1900-A pommel horn handle, insect damage on the underside, beautiful textured and spotted malacca shaft and a horn ferrule- H. 1 1/2" x 2", O.L.- 35 1/4" \$200-\$300

**83. Silver Cat Cane**

Ca. 1920-A hammered silver plated handle with a large cat in high relief atop, thick bark covered shaft and a metal ferrule- H. 2" x 3 1/4", O.L. 34" \$200-\$300



83.

86.

85.

**84. "Boogie Man" Ivory Cane**

Ca. 1900-An unusually carved handle with two color glass eyes, ivory spacers, exotic wood shaft and a horn ferrule- H. 1 1/2" x 2", O.L. 37" \$500-\$600



**85. Abraham Lincoln Cane**

Ca. 1900-A molded handle, probably gutta percha, silver metal collar signed solid silver, malacca shaft and a 3" horn ferrule- H. 1 1/2" x 2", O.L.- 34" \$300-\$400

84.

**86. Chinese Jade Dragon Cane**

Late 19th Century-A carved dragon which appears to be jade, coin silver pedestal collar, silver eyelets, honey malacca shaft and a horn ferrule- H. 1 3/4" x 2 1/4", O.L.- 40" \$700-\$1,000



87.

**87. Ivory Dress Cane**

Ca. 1850-A large ivory handle with a lady in bonnet, olive wood shaft and a metal ferrule- H. 2" x 4", O.L.- 37" \$500-\$900



88.

**88. Horn Sword Cane**

Ca. 1890-A two piece horn handle with a three sided 12 1/2" blade, push and twist mechanism, silver metal collar, exotic wood shaft and a metal ferrule- H. 4 1/2" x 2 1/2", O.L. 38" \$400-\$600



91.



90.



89.



**89. Large Gold Dress Cane**

Ca. 1900-An ornate gold-filled handle about the size of a door knob, small gold collar with the initial A., ebony shaft and a metal ferrule-  
H. 2" x 3 1/4", O.L.- 36"  
**\$500-\$700**

**90. Tiffany Gold Dress Cane**

Ca. 1900-"Tiffany & Co. 8944 Makers 4470 18kt gold M", exotic wood shaft and a horn ferrule-  
H. 1 1/4" x 1 1/2", O.L.- 34 1/2"  
**\$800-\$1,200**

**91. Col. Clark's Gold Dress Cane**

Dated 1873-A large gold handle which is tested to be around 12 karat, 6 arch panels sides, small gold collar, ebony shaft and a horn ferrule-  
H. 1 3/4" x 3", O.L. 32"  
**\$800-\$1,200**

93.



**92. Horn Dress Cane**

Ca. 1900-Stylized horn handle, white metal collar, bamboo shaft and a metal ferrule-  
H. 5" x 2", O.L.- 34 1/2"  
**\$150-\$250**

92.



**93. Silver Fox Dress Cane**

Ca. 1900-A cast fox with red eyes and foliage, natural vine shaft and a metal ferrule-  
H. 1 1/4" x 3", O.L. 36"  
**\$500-\$600**

94.

**94. Sword Cane**

Ca. 1910-Stacked leather disc handle, 18 1/2" four sided blade, cherry shaft and no ferrule-  
H. 1 1/2" x 3 1/2", O.L.- 36 1/2"  
**\$400-\$700**



**95. Porcelain Dress Cane**

Dated 1907-A "friendly consideration" presentation on a marked 14 kt collar, probably Meissen, stepped bamboo shaft and a metal ferrule- H. 1 ¼" x 2 ¾", O.L. 35" \$500-\$1,000



95.

**96. Carved Lion Folk Cane**

Ca. 1875-A one piece carved vine cane with a massive lion atop, carved snake which head has been bitten off and a metal ferrule- O.L.- 37 ¾" \$400-\$500



96.

**97. Horn Dress Cane**

Ca. 1920-A stylized horn handle white metal collar, lacquered hardwood shaft and a metal ferrule-H. 4 ¼ x 4", O.L.- 35" \$250-\$350



98.

**98. Silver Dress Cane**

Dated 1899-An unmarked silver dress cane with various foliage, acceptable dents atop, split bamboo shaft and no ferrule- H.- 4" x 3 ¼", O.L.- 35" \$250-\$350



99.

**99. Shepherd Glove Holder Cane**

Ca. 1925-A carved shepherd with two color glass eyes, pushbutton moveable lower jaw and painted tongue, three spacer collars, twigspur shaft and no ferrule- H. 3 ¾" x 2 ½", O.L.- 38" \$350-\$450

**100. Two Horn Dress Canes**

Largest H. 4 ¾" x 3", O.L.- 36 ½" \$300-\$400

100.



103.

101.



**101. Gambler's Dress Cane**

Ca. 1900-A maple burl handle with silver inlaid suits of cards, silver collar, exotic wood shaft and a metal ferrule-H. 1 1/4" x 1 3/4", O.L.- 35"  
**\$400-\$500**

102.



**102. Two Sterling Dress Canes**

Ca. 1920-One being a Ben Cox of London and the other probably American made-Largest H. 1 1/2" x 2 1/4", O.L.- 35 1/4"  
**\$400-\$500**

**103. High Button Shoe Cane**

Ca. 1900- White metal shoe with exposed toes, older umbrella shaft and no ferrule-H. 4 1/2" x 4 3/4", O.L.- 36 1/4"  
**\$200-\$300**



104.



105.



**104. Two Swagger Sticks**

Early 20th Century-One being a bone handle with a 12" blade and the other with a carved Blackamore and an ivory tip-H. Longest H. 1" x 4", O.L.- 20 1/2"  
**\$400-\$600**

**105. Stag Frog Cane**

Ca. 1900-A carved staghorn frog with two color glass eyes, small silver metal collar, a pair of silver eyelets, a faux twigspur exotic wood shaft and a metal ferrule-H. 4 1/4" x 1", O.L.- 35"  
**\$500-\$800**

**106. "Rough Rider Riding Crop"**

Dated 1899-Heavily cast gold handle with touches of silver inscribed "San Juan Hill Rough Rider 1899", oral legend has it that this probably belonged to the original rough rider himself, Mr. Roosevelt, but there is no provenance with this crop, ornate gold work which is all hand chased, high relief horse, saddle and stirrups, most likely a rhino shaft and a horn tip- H. 1 1/4" x 2 3/4", O.L.- 26 3/4" \$5,000-\$6,000



106.

109.



**107. Fraternal Dress Cane**

Dated 1901-An Indianapolis souvenir of an Odd Fellows convention, checkerboard shaft and a horn ferrule- H. 3 1/2" x 2", O.L.- 36 1/4" \$100-\$200

**108. Buffalo Horn Dress Cane**

Dated 1892-A stylized horse hoof handle, dated gold collar, dark malacca shaft and a horn ferrule- H. 3 3/4" x 3", O.L.- 34 1/4" \$400-\$600

**109. Alligator Folk Cane**

Ca. 1925-A Jacksonville style carved gator on a one piece orange tree shaft with a horn ferrule-O.L.- 36" \$250-\$300

**110. Folk Art Gator Cane**

Ca. 1930-A carved hands on one piece cane with an eagle, alligator, fish and more and a metal ferrule (original alligator varnish finish)-O.L.- 36" \$350-\$500

110.



108.

107.







111.

**111. Important Tiffany Jade Cane**

Dated 1911-Massive spinach jade handle in perfect condition, 18 karat gold collar signed "Tiffany & Co. Makers 18kt Gold M", thick honey malacca shaft and a horn ferrule (an extremely nice original cane which is as nice now as it was the day it was sold by Tiffany's)-H. 1 ¼" x 3 ½", O.L. 37"  
**\$5,000-\$7,000**



113.

**112. Art Nouveau Silver Dress Cane**

Ca. 1890-A burl handle with a silver end cap and a signed sterling attached collar, hexagonal mahogany shaft and a metal ferrule-H. 4 ¾" x 2", O.L. 36"  
**\$200-\$300**



**113. Brigg Sword Cane**

Late 19th Century-Ornate silver handle with a 10" signed Brigg London heavily worked blade with stars and blood lines, push locking mechanism, mahogany shaft and a horn ferrule-H. 3 ½" x 3 ¾", O.L. 36 ¼"  
**\$1,300-\$1,700**



112.

**114. Toledo Sword Cane**

Ca. 1900-A rosewood crook handle cane with a 27 ½" signed Toledo blade with a blood groove, push and lock mechanism, rosewood shaft and a metal ferrule-H. 4 ¾" x 6 ½", O.L. 36"  
**\$900-\$1,200**



114.

**115. Silver Sword Cane**

Ca. 1870-An ornate Viennese Sword cane with silver mounts, push-button mechanism, 11 1/2" engraved four sided blade, malacca shaft and an early metal ferrule-H. 3 1/2" x 1 1/4", O.L. 33 1/4" **\$1,500-\$2,000**



**115.**



**116. Brigg Sword Cane**

Ca. 1900-Ornate overlaid 900 silver handle, signed Brigg London fancy four sided blade with a push and lock mechanism, exotic wood shaft and a horn ferrule-H. 3 3/4" x 1 1/4", O.L. 38" **\$1,400-\$1,600**

**116.**



**117. Ivory Sword Cane**

Ca. 1890-A Wilkinson sword cane with an ornate Art Nouveau handle, push and pull tight mechanism, signed Wilkinson London blade which is 27 1/2", three sided blade with full blood groove, thick malacca shaft and a horn ferrule-H. 3 1/4" x 2", O.L. 39" **\$1,500-\$2,000**

**117.**



**118. Toledo Spring Hilt Sword Cane**

Late 19th Century-Ornate hallmarked British silver handle, spring hilt signed 27" Toledo blade with much decoration and a blood groove, thick malacca a shaft and a brass ferrule-H. 1 1/4" x 1 3/4", O.L. 35" **\$2,500-\$3,500**

**118.**





119.

**119. Ivory Flick Stick**

Ca. 1885-A working flick stick with an ivory handle, 5 3/4" ornate four sided blade with pyramid decoration, exotic wood shaft and a metal ferrule-H. 1 1/2" x 1 1/2", O.L. 36 3/4" \$1,800-\$2,200

121.



**120. Mildly Erotic Ivory Cane**

Ca. 1890-Carved ivory handle, silver metal collar, leather covered shaft and a horn ferrule- H. 3 1/4" x 2", O.L.- 34 1/2" \$300-\$500

120.



123.

**121. Japanese Ivory Dress Cane**

Ca. 1890-A very unique carving of a mother ape with her child playing, signed in red Asian characters, silver metal collar, hardwood shaft and a metal ferrule- H. 1" x 5 1/2", O.L.- 36" \$500-\$600

**122. Horn Dress Cane**

Dated 1917-Possibly Rhino, engraved silver metal collar, malacca shaft and a 2" horn ferrule- H. 1 1/8" x 2 1/2", O.L.- 35 1/2" \$300-\$500



122.

**123. Ivory Dress Cane**

Ca. 1890-A carved ivory dress handle with an ornate gold filled end cap, ornate gold filled collar, snakewood shaft and a horn ferrule- H. 4 1/2" x 1", O.L.- 36" \$500-\$700



124.

**124. Ivory Nude**

20th Century Pre-ban-A carved ivory handle of a nude, silver metal collar, snakewood shaft and a horn ferrule- H. 1 1/4" x 5 1/4", O.L.- 35 3/4" \$500-\$700

**125. Ivory Dress Cane**

Ca. 1890-An ivory pistol grip handle, carved in high relief, gold metal collar, exotic wood shaft and a metal ferrule- 2" x 5 1/4", O.L.- 35 1/2" \$300-\$400



125.

**126. Ivory Mice Micro Carving Cane**

Ca. 1900-A unique carved handle, signed sterling collar, partridge wood shaft and a metal ferrule- H. 1 1/4" x 1 1/4", O.L.- 35 1/2" \$300-\$500



127.

**127. Ivory Dress Cane**

Ca. 1890-A carved ivory Tau ivory cane, signed sterling collar, ebonized shaft and a metal ferrule- H. 5" x 1 1/2", O.L.- 35 3/4" \$250-\$350

128.

129.

**128. Whale's Tooth Dress Cane**

Ca. 1890-A whale's tooth ivory handle, palm wood shaft and a metal ferrule- H. 1 1/4" x 2 1/2", O.L.- 36 1/2" \$250-\$300

126.



130.

**129. Ivory Floral Dress Cane**

Ca. 1890-A carved high relief ivory handle, signed sterling collar, ebony shaft and a metal ferrule- H. 1 3/4" x 5 3/4", O.L.- 35 1/4" \$300-\$400



**130. Ivory Dress Cane**

Ca. 1900-A carved ivory handle, thick ebonized shaft and a metal ferrule- H. 1 1/2" x 2 1/4", O.L.- 36" \$250-\$350





132.

**131. Silver and Ivory Dress Cane**

Ca. 1890-A unique silver and ivory application, ornate signed sterling collar, hardwood shaft and a horn ferrule- H. 1 1/4" x 4 3/4", O.L.- 35 1/4"  
**\$450-\$550**

133.



**132. Ivory Dog Cane**

20th Century Pre-ban-A carved ivory dog with two color glass eyes and ivory striations, silver collar, partridge wood shaft and a metal ferrule- H. 4 3/4" x 2", O.L.- 36"  
**\$500-\$600**



134.

**133. Medieval Portrait Ball Carving**

20th Century Pre-ban-An expert carved high relief royal portrait carving- H. 2" x 2" x 1 3/4"  
**\$500-\$600**

131.



**134. Ivory Nude**

20th Century Pre-ban-A nice nude carving of a busty young lady on a wooden base- H. 1 3/4" x 1 1/4" x 5 3/4" H.  
**\$400-\$500**

**135. Umbrella Sword Cane**

Ca. 1930-An unusual malacca cane which doubles as an umbrella and a push button sword cane, signed Wilkinson mint 14 1/2" blade with a push button mechanism, and a horn ferrule-H. 5 1/2" x 5 3/4", O.L. 35 1/2"  
**\$2,000-\$2,500**



135.

**136. Chinese Ivory Buddha Cane**

Ca. 1890-A carved double Buddha, ornate sterling collar, malacca shaft and a horn ferrule-H. 2" x 2", O.L. 3 1/2"

**\$400-\$600**



**137.**

**137. Folkly Ivory Cow Cane**

Ca. 1900-A primitive folkly carving in ivory, brass collar, ebony shaft and no ferrule-H. 5" x 1 1/2", O.L. 32"

**\$250-\$350**

**136.**

**138. Ivory Eagle Dress Cane**

Ca. 1875-A nice hunk of ivory with an eagle carved in high relief above cannons and cannon balls, silver metal collar, ebonized shaft and a metal ferrule-H. 4 3/4" x 2 1/4", O.L. 35 3/4"

**\$500-\$600**



**139.**

**139. Asian Ivory Cane**

A carved ivory handle of a scholar, silver metal collar, malacca shaft and a metal ferrule-H. 2" x 1 3/4", O.L. 33"

**\$350-\$550**

**138.**

**140. Ivory Exotic Bird Cane**

Ca. 1910-A carved ivory bird at rest, small flexible ebonized shaft and no ferrule-H. 3 1/2" x 1 1/2", O.L. 33 1/2"

**\$200-\$300**



**141.**

**141. Ivory Glove Holder Cane**

Ca. 1910-A nice example of this type of cane with an ivory handle and ring, exotic wood shaft and a brass ferrule-H. 5 1/2" x 1 3/4", O.L. 35 1/2"

**\$250-\$350**



**142.**

**142. Ivory Telescope Cane**

19th Century-A brass one draw working ivory telescope, brass collar, coin silver eyelets, thick malacca shaft and a 3 1/2" brass ferrule-H. 3 1/2" x 2", O.L. 36"

**\$600-\$800**

**140.**



143.



**143. Art Nouveau Ivory Cane**

Ca. 1890-An ornate carved handle with insects and flowers, signed sterling ornate collar, bamboo shaft and no ferrule-H. 7 1/2" x 1 1/4", O.L. 32"  
**\$300-\$400**

144.



**144. Bone Dress Cane**

Early 20th Century-An ornate carved bone handle which has pierced carvings, small bone collar, ebonized shaft and a horn ferrule-H. 7" x 1", O.L. 36 1/2"  
**\$200-\$300**

145.



**145. Gold Dress Cane**

Ca. 1900-A gold-filled dress handle, ebony shaft and a horn ferrule-H. 8" x 1 1/2", O.L. 37"  
**\$250-\$300**

146.



**146. Mystical Ivory Cane**

Ca. 1900-A unique carving of a mystical face with small inset eyes, malacca shaft and an ivory ferrule-H. 3" x 1 1/4", O.L. 33 1/4"  
**\$300-\$400**

148.



**147. Ivory Dress Cane**

Ca. 1885-An ivory handle with a young boy with a tasseled hat, silver metal collar, ebony shaft and a horn ferrule-H. 3" x 1 1/2", O.L. 36 1/2"  
**\$250-\$350**

147.



**148. Ivory Lion Cane**

Ca. 1870-An ivory lion handle which has had much thumb wear to the lions face, silver metal collar, natural branch shaft and a metal ferrule-H. 5" x 1 1/2", O.L. 32"  
**\$200-\$300**

**149. Ivory Dress Cane**

Ca. 1860-An early small ivory handle, small metal collar, small flexible shaft and a horn ferrule-H. 2 1/4" x 3/4", O.L. 35"  
**\$150-\$200**



149.

**150. Gold Dress Cane**

Ca. 1900-An ornate gold-filled presentation cane, exotic wood shaft and a metal ferrule-H. 3 1/2" x 2", O.L. 34 1/2"  
**\$250-\$350**



150.

**151. Ivory Dress Cane**

Ca. 1885-A nice worked ivory handle with white metal inlay, brass collar, partridgewood shaft and no ferrule-H. 4 1/4" x 1 1/4", O.L. 33 1/2"  
**\$250-\$300**



152.

**152. Ram's Head Ivory Cane**

Ca. 1850-An early ivory handle carved in the shape of a ram with glass eyes, early twig spur shaft and no ferrule-H. 3 1/4" x 1", O.L. 33 1/4"  
**\$350-\$500**

153.

151.

**153. Ivory Dress Cane**

Ca. 1900-A segmented ivory suitcase cane which unscrews at the center of the long ivory handle, nine ivory sections of which three have striations, hardwood shaft and no ferrule-H. 16 1/2" x 3 1/4", O.L. 34 1/2"  
**\$400-\$600**



**154. Ivory Dress Cane**

Ca. 1880-A two piece carved ivory handle with grapes and foliage, brass collar, malacca shaft and no ferrule-H. 4 1/2" x 3 1/4", O.L. 34 1/2"  
**\$250-\$350**

154.



**155. Ivory Eagle Cane**

Ca. 1900-A high relief carved eagle with wings spread, exotic wood shaft and a metal ferrule-H. 5 1/4" x 2", O.L. 36 1/2"  
**\$350-\$400**



155.



156.



**156. Gambler's "Craps" Cane**

Ca. 1930-A mother of pearl and brass handle which holds two die under glass, exotic hardwood shaft and a metal ferrule-H. 1 3/4" x 1 1/2", O.L. 35 1/2"  
**\$350-\$450**

157.



**157. Ivory and Silver Dress Cane**

Ca. 1880-An ivory handle with a large silver end cap, ornate signed sterling collar, mahogany shaft and a metal ferrule-H. 4 1/2" x 1", O.L. 36"  
**\$300-\$400**

158.



**158. Ivory Dress Cane**

Ca. 1890-A nice Art Nouveau worked ivory handle, ornate signed sterling collar, ebonized shaft and a metal ferrule-H. 4" x 2", O.L. 38"  
**\$250-\$350**

159.



**159. Ivory Lion Cane**

Late 19th Century-An Anglo Indian style ivory lion, small silver metal collar, ivory eyelets, inlaid Egyptian style person on shaft and an ivory ferrule-H. 4" x 2 1/4", O.L. 37"  
**\$400-\$500**

160.



**160. Vesta Match Safe Cane**

Ca. 1880-A nickel plated brass handle container cane which is spring loaded with a striker atop, malacca shaft and a metal ferrule-H. 2" x 1 1/4", O.L. 36"  
**\$250-\$350**

161.



**161. Vesta Match Safe Cane**

Ca. 1880-A push-up candle and match safe cane with a push button mechanism, ornate silver plated handle, maple shaft and a horn ferrule-H. 4" x 1 1/4", O.L. 36 1/2"  
**\$400-\$600**

**162. Vesta Match Safe Cane**

Hallmarked 1896-A Henry Penn coin silver compartment cane which is spring loaded, striker is the rim underneath the top, thick malacca shaft and a brass ferrule-H. 2" x 1 1/4", O.L. 36 1/2" \$400-\$500

**163. Vesta Match Safe Cane**

Ca. 1890-A brass handle with a striker atop, ebony shaft and a horn ferrule-H. 4" x 1 1/4", O.L. 36" \$350-\$450

**164. Vesta Match Safe Cane**

Dated 1886-A Brigg sterling handle which is inscribed "Bully Xmas 1886", hinged lid with striker underneath, inscribed silver collar, ebonized shaft and a brass ferrule-H. 2 1/2" x 1 1/2", O.L. 36" \$450-\$600

**165. Vesta Match Safe Cane**

Ca. 1880-A coin silver unique gentleman's head with two color glass eyes, spring loaded side compartment for matches and a striker on the interior on the door, bow tie collar, exotic wood shaft and a metal ferrule-H. 1 1/2" x 1 1/2", O.L. 33 3/4" \$500-\$800

**166. Vesta Match Safe Cane**

Ca. 1990-A spring loaded signed Brigg Vesta which is unmarked coin silver, striker on the bottom side of the top, bamboo shaft and a brass ferrule-H. 1 3/4" x 1 1/4", O.L. 35" \$400-\$600

**167. Vesta Match Safe Cane**

Ca. 1880-A riding whip Vesta inscribed "The Bristol" (striker on bottom), spring loaded top handle swings out for a secret compartment which is behind the 8" secondary leather handle, silver metal collar, woven crop and a leather whip-O.L. 34 3/4" \$400-\$600

163.



162.



167.



164.



166.



165.



170.

168.



169.



**168. Vesta Match Safe Cane**

Ca. 1880-A nickel silver handle with a pair of pheasants engraved, swing open Vesta with a striker on the thumb pad, has another unusual feature which might be a post to hold a percussion cap, ebony shaft and no ferrule-H. 3 1/4" x 1 1/2", O.L. 32 1/4"  
**\$500-\$700**

**169. Vesta Match Safe Cane**

Ca. 1890-A silver metal handle which has a striker atop and a hinged lid, small silver collar marked "Pat. 7171", ebony shaft and no ferrule-H. 2 1/2" x 1 1/8", O.L. 36"  
**\$350-\$450**

**170. Vesta Match Safe Cane**

Ca. 1870-A silver plated spring loaded handle with no visible striker but the rim of the collar could have been used, unusual thick bamboo shaft and a metal ferrule-O.L. 36 1/2"  
**\$350-\$450**



171.

**171. Silver Dress Cane**

Ca. 1890-A one piece bent exotic wood shaft with a silver end cap with Birmingham 1901 hallmarks and a brass ferrule-O.L. 36 1/4"  
**\$100-\$200**



173.

**172. Vesta Match Safe Cane**

Ca. 1910-A sterling Vesta with a striker atop, partridge wood shaft, probably missing a silver end cap for the handle and a metal ferrule-O.L. 36 1/4"  
**\$250-\$350**



172.

**173. Vesta Match Safe Cane**

Ca. 1890-A dual purpose Vesta cane which also has a handsome cab whistle, signed "Lyon", hinged top with large striker, thick bamboo shaft and a metal ferrule-H. 4 1/2" x 2 1/2", O.L. 35 1/4"  
**\$500-\$800**

**174. Vesta Match Safe Cane**

Dated 1899-A hallmarked Jonathan Howell match safe and cigarette compartment stick, sterling silver, one piece bamboo shaft and a metal ferrule-O.L. 35 1/2"

**\$300-\$400**

**175. Vesta Match Safe Cane**

Dated 1887-A push-up candle stick with a match holder on a spring loaded end cap, ornate brass handle which is patented, hardwood shaft and a metal ferrule-H. 4" x 3 3/4", O.L. 34 1/2"

**\$500-\$700**

**176. Vesta Match Safe Cane**

Dated 1887-A signed Brigg silver handle with London hallmarks, snakewood shaft and a brass ferrule-H. 3 3/4" x 2", O.L. 36"

**\$500-\$600**

**177. Vesta Match Safe Cane**

Dated 1878-A nice sterling handle with Birmingham hallmarks with the initials "K.M." as the maker, hinged end cap, striker on underside of handle, ebony shaft and a small metal ferrule-H. 3 3/4" x 2", O.L. 34"

**\$400-\$600**

**178. Lot of Three**

Vesta Cane missing top, modern sun dial and compartment cane, 19th century Vesta spring loaded nickel silver handle

**\$200-\$300**

**179. Japanese Ivory Dress Cane**

Ca. 1875-A carved ivory handle with two small ivory mice with glass eyes eating an ear of corn, scalloped coin silver collar, two silver eyelets, carved ivory tassel of corn and bug, malacca shaft and a 3" ferrule-H. 4" x 1", O.L. 35 1/4"

**\$1,200-\$1,500**



176.

177.

175.

179.

174.

178.



180.

**180. Ivory Horse Cane**

Ca. 1900-A carved two sided ivory horse handle with two color glass eyes, hallmarked British silver collar, faux bamboo partridge wood shaft and a metal ferrule-H. 4 1/2" x 1 1/4", O.L. 36"

**\$1,200-\$1,400**



181.

**181. Inuit Bone Cane**

Ca. 1935-A carved bone Inuit handle, ebonized malacca shaft and a metal ferrule-H. 4" x 1 1/2", O.L. 37 1/2"

**\$250-\$350**



**182. Vulture Theatrical Cane**

Ca. 1930-A stylized copper handle of the big bird with two color glass eyes, painted gold collar, thick hardwood shaft and a metal ferrule-H. 4" x 3 1/4", O.L. 35"

**\$250-\$350**



**183. Fossilized Tooth Handle**

Ca. 1900-A set of three fossilized teeth from some type of animal, silver fluted collar with abalone inlays, brass tacks attach a tooth to the collar, exotic wood shaft and a metal ferrule-H. 2" x 2", O.L. 35"

**\$350-\$450**



184.

**184. A Makila Defensive Cane**

Dated 1929-An original cane of this type with a secret pike beneath a handle which unscrews, exotic natural wood shaft, large ornate brass ferrule with pike end-H. 1 1/4" x 8", O.L. 36"

**\$300-\$400**



185.

**185. Blue Hardstone Dress Cane**

Ca. 1930-A blue hardstone sphere which is probably lapis, fluted unmarked sterling collar, ebony shaft and a metal ferrule-H. 1 3/4" x 1 3/4", O.L. 36"

**\$300-\$400**



182.

**186. Damascene Dress Cane**

Ca. 1900-A nice Toledo handle with an urn of flowers atop, ivory spacers and horn collar, ebony shaft and a metal ferrule-H. 1 1/2" x 2", O.L. 36"

**\$350-\$450**

**187. Litter Receiver System Cane**

Early 20th Century-An unusual system cane which is labeled on the shaft "Litter Retriever Cane, Pat. No. 286L835", nice horn handle which unscrews from the shaft to expose two prongs, hardwood shaft and a stopper ferrule-H. 3" x 4", O.L. 38"

**\$300-\$400**

**188. Ivory and Silver Dress Cane**

Ca. 1890-A large silver handle with an ivory disc atop, probably heavy enough to be a defensive cane, thick exotic wood shaft and a horn ferrule-H. 1 3/4" x 3 1/4", O.L. 36"

**\$400-\$500**

**189. Alligator Wood Cane**

Ca. 1920-A full carved gator out of orange wood (probably Jacksonville), live oak shaft and a metal ferrule-H. 5" x 2 1/2", O.L. 35"

**\$250-\$350**

**190. Gold Talon and Egg Dress Cane**

Ca. 1875-An unusual presentation with four gold claws attached to an American walnut burl, handle is incised with owners name, small gold ornate collar, eyelets with tassel, flexible animal skin (probably hippo covered shaft and no ferrule)-H. 5 1/2" x 2 1/4", O.L. 36"

**\$600-\$800**

**191. Agate Dress Cane**

Ca. 1930-A well figured agate spear handle, fluted silver metal collar, exotic wood shaft and a horn ferrule-H. 2" x 2", O.L. 36"

**\$300-\$350**



187.



188.



186.



190.



189.

191.





192.



193.



194.



195.



196.



197.



198.



199.



**192. Sterling Lizard Dress Cane**

Ca. 1925-A heavy cast signed sterling handle with a full length lizard, thick and heavy ebony shaft and a metal ferrule-H. 4 1/2" x 1 1/2", O.L. 36" \$400-\$600

**193. Masonic Silver Dress Cane**

Ca. 1900-An ornate signed sterling handle with the Masonic compass fronting the silver handle and various foliage and birds throughout, previous owner's name "Ralph..." is cast in relief ebony shaft and a metal ferrule-H. 4 1/4" x 3", O.L. 36" \$400-\$500

**194. Civil War Folk Cane**

Ca. 1880-A carved soldier with a period hat with two color glass eyes, small brass collar, faux snakewood shaft and an early brass ferrule-H. 2 3/4" x 1 3/4", O.L. 35" \$350-\$450

**195. German Military Souvenir Cane**

Early 20th Century-A pewter cast handle which is signed "Reserve Hat Ruh", hardwood shaft and a small rubber ferrule-H. 2 1/2" x 1 3/4", O.L. 37 1/2" \$200-\$300

**196. Gold Sword Cane**

Ca. 1880-An ornate gold-filled handle with a blank cartouche, four sided 27" push and pull blade, bamboo shaft and a metal ferrule-H. 1 3/4" x 2 1/2", O.L. 33" \$500-\$700

**197. Dog Sword Cane**

Ca. 1925-A copper plated labrador with a four sided 13 1/2" blade which has an unusual copper and turquoise inlay atop, brass collar, screw in hardwood shaft and a metal ferrule-H. 2 1/2" x 2", O.L. 36" \$300-\$500

**198. Ornate Sword Cane**

Ca. 1890-A flat black painted thick crook handle sword cane, push and pull decorated 11 1/2" blade, both the handle and the shaft have attached gargoyles, flies, wasps, etc. which are made of some type of sculptured metal and a metal ferrule-O.L. 37 1/2" \$500-\$800

**199. Silver Defensive Cane**

20th Century-A heavy signed sterling handle which has been cast in high relief, thick ebony shaft and a large metal ferrule-H. 4 1/2" x 1 3/4", O.L. 36" \$350-\$450

**200. Court Sword Cane**

Ca. 1835-A carved ivory handle, early silver metal collars, 14 1/2" push and pull blade, malacca shaft and a metal ferrule-H. 1 1/4" x 1 3/4", O.L. 35 1/4"  
**\$500-\$700**

**201. Horn Dress Cane**

Ca. 1925-A full horn dress cane with a four piece segmented shaft and a horn ferrule-H. 4 1/2" x 4 1/2", O.L. 32"  
**\$300-\$400**

**202. Vertebrae Day Cane**

Ca. 1900-An American walnut carved handle, vertebrae shaft and a brass pike ferrule-H. 5 1/2" x 1 1/2", O.L. 36"  
**\$350-\$450**

**203. Large Carved Glove Holder Cane**

C. 1885-A large and nicely carved walnut bulldog with two color glass eyes, spring loaded push lower jaw, silver metal collar, thick malacca shaft and a brass ferrule-H. 2 1/2" x 2 1/2", O.L. 35 3/4"  
**\$500-\$600**

**204. Gold Dress Cane**

Ca. 1900-An ornate gold-filled handle, rich snakewood shaft and a metal ferrule-H. 1 1/4" x 1 1/2", O.L. 35 1/2"  
**\$200-\$300**

**205. Japanese Dress Cane**

Ca.1890-A nice gold plated and damascene steel handle with birds- foliage- dragons and flowers, bamboo shaft and a metal ferrule-H. 1 1/4" x 3 1/2", O.L. 35"  
**\$400-\$600**

**206. Spaniel Dog Cane**

Ca. 1930-A nicely carved spaniel handle in burl, silver metal collar, a hardwood shaft and a metal ferrule-H. 2 3/4" x 2 1/4", O.L. 36"  
**\$200-\$300**

**207. Bulldog Defensive Cane**

Ca. 1930-A bell bronze weighted bulldog handle, bell bronze collar, hardwood shaft and a brass ferrule-H. 1 3/4" x 1 1/2", O.L. 36"  
**\$200-\$300**



205.

204.



206.



207.



200.



202.



203.



201.





208.



210.



209.

**208. Stag Lion Cane**

Ca. 1875-A carved antler handle with a lion front plate with two color glass eyes and an ornate silver endplate, ornate sterling collar, natural branch shaft and a metal ferrule-H. 5" x 2", O.L. 35"  
**\$300-\$400**

**209. Two Canes**

One being a bamboo crook handle with various Japanese scenes carved and the other a wooden fist cane  
**\$150-\$250**

**210. Pair of Dog Canes**

One being a bell bronze bulldog defensive cane with a hardwood shaft and the other a carved terrier with two color glass eyes and a natural branch shaft  
**\$250-\$350**

213.



**211. Wood Suitcase Cane**

Ca. 1925-A folk carved hardwood crutch handle which separates in the center for placement in a suitcase, partrigewood shaft and a metal ferrule-O.L. 36"  
**\$200-\$250**



214.

**212. Stag Dress Cane**

Ca. 1885-An antler handle, ornate silver metal collar, malacca shaft and a horn ferrule-H. 5" x 2", O.L. 34 1/2"  
**\$200-\$300**



211.

**213. Stag Dress Cane**

Ca. 1885-A stag handle with a sterling end cap, dented silver collar, hardwood shaft and a stopper ferrule-H. 5" x 2", O.L. 36"  
**\$150-\$200**



212.

**214. Folk-Art Dog**

Ca. 1865-A carved one piece cane with some original varnish, a nice primitive carving, shaft has been repaired with a 5" silver metal collar and a copper ferrule- O.L. 35"  
**\$100-\$200**

**215. G.A.R. Cane**

Late 19th Century-A metal souvenir of a grand army republic convention, ebonized shaft and a large horn ferrule-H. 3" x 2 1/2", O.L. 36"

**\$150-\$250**

**216. Bone and Wood Day Cane**

Late 19th Century-A worked bone handle with a wood end cap, British hallmarked ornate collar, thick malacca shaft and a metal ferrule-H. 4" x 1 1/2", O.L. 36"

**\$200-\$300**

**217. Scrimshaw Bone Cane**

Early 20th Century-A scrimshawed bone handle with a whale and a penguin, pewter collar, massive ebonized shaft and a stag ferrule-H. 4" x 1 1/4", O.L. 36"

**\$250-\$350**

**218. Horn Sword Cane**

Ca. 1885-A horn handle with two of three silver metal attachments, carved bone collar, 14" push and pull three sided blade and a bone ferrule-H. 4 1/2" x 2", O.L. 35"

H. 4 1/2" x 2", O.L. 35"

**\$300-\$500**

**219. Silver Dress Cane**

Ca. 1900-A British hallmarked coin silver handle with the silver initials F.A.P. attached to a hardwood shaft and a metal ferrule-H. 1 1/4" x 1 1/8", O.L. 34"

**\$150-200**

**220. Burl Country Cane**

Ca. 1890-A one piece natural grown shaft with a sterling end cap and collar and a metal ferrule-O.L. 36"

**\$100-\$150**

**221. Silver Dress Cane**

Ca. 1850-A hand engraved silver handle with vine and leaf display, small silver collar, carved eyelets, malacca shaft and a horn ferrule-H. 1" x 1 3/4", O.L. 35"

**\$250-\$350**

Be sure and see our internet catalogue at [www.auctionauction.com](http://www.auctionauction.com) for many more canes to follow the printed catalogue.

215.



216.

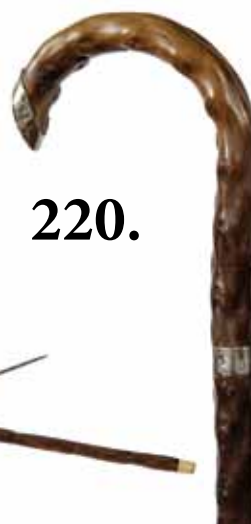
217.



218.

219.

221.



220.



# Ivory Cane Handles

**\$300-\$400**

222.



223.



224.



225.



226.



227.



228.



229.



230.



231.



234.



237.



238.



239.

232.



234.



235.



236.



241.



244.



248.



240.



243.



247.



245.



242.



\$450-\$550

249. \$500-\$600



250.

\$400-\$500



**Kimball M. Sterling, Inc. (TFL-1915)**  
125 West Market Street  
Johnson City, Tennessee 37601  
kimballsterling @ earthlink.net  
423.928.1471

Photography by James Price

Catalog Design by KT Design, LLC  
www.kristaft.com

© Copyright 2014 Kimball M. Sterling, Inc.

**www.AuctionAuction.com**

