



KIMBALL M. STERLING, INC.

Kimball M. Sterling, Inc.

PRESENTS AN

Antique Cane Auction



SATURDAY OCTOBER 20TH, 2007

KIMBALL M. STERLING, INC.
Kimball M. Sterling, Inc.

ANTIQUE CANE AUCTION

SATURDAY, OCTOBER 20TH, 2007- 1:00 P.M. E.S.T.

PREVIEW

FRIDAY, OCTOBER 19TH - 12:00 P.M. - 4:00 P.M. E.S.T.
OR BY APPOINTMENT THE WEEK BEFORE THE AUCTION

*The auction will be carried live on our website
with our Live Auction Software*

WWW.CANEAUCTION.COM

Kimball M. Sterling Auction Gallery
125 West Market Street Johnson City, Tennessee 37601
kimballsterling @ earthlink.net
423.928.1471

Member National Auctioneers Association

TERMS AND CONDITIONS

1. Cash, check, MasterCard, or Visa. A 15% buyers' premium will be added to the hammer price as part of the sale price for in-house, phone, and absentee bidders. We reserved the right to hold purchases until the buyers checks clears if buyer is not known by us. Bank letter of credit is acceptable.

2. Mail or phone bids are accepted; the firm may require a deposit.

3. Kimball M. Sterling, Inc. has endeavored to catalog and describe the property correctly. All property is sold as is and neither the auction company nor the consignor will be responsible for descriptions, genuineness, provenance or condition of the property. No statement in the catalog made orally at the sale or otherwise shall be deemed to be a warranty, representation, or an assumption of liability.

4. In the event of any dispute between bidders, the auctioneer shall have total discretion to determine the successful bidder, in which his determination shall be final or to re-offer and resale the article in dispute. Title of the item or items purchased by the bidder will pass at the fall of the gavel and declaration of bidder.. This is not an approval auction.

5. Principal auctioneer: Kimball M. Sterling #2467. B. Elizabeth Sterling, auctioneer # 5757. Firm Kimball M Sterling Inc. TFL-1915

6. Bidders may bid live on the Internet by visiting <http://www.auctionauction.com> You may also view the auction at this site and bid by phone.

7. Communications: Telephone 423-928-1471. Fax 423-928-2816. Cellular 423-773-4073, 423-773-4072. Email kimballsterling@earthlink.net

8. Worldwide shipping is available. We encourage you to use United States Mail. Our packing service is free but the buyer must pay postage and insurance fees of their choice.

9. Kimball M. Sterling, Inc. will not be held responsible for bids not received in time for the auction or slow Internet bids. We will not be responsible for items left on our location for over 30 days.

10. Sale will be conducted at 125 West Market Street, Johnson City, Tennessee. 37604. Announcements day of the sale take precedence over pre-sale advertising. Any litigation that pertains to this auction will be conducted in the county of Washington in Tennessee and is agreed upon by registering for this auction.

11. Airport is the Tri-Cities Airport, which is approximately 20 miles from the gallery. Internet catalog and live bidding available at www.auctionauction.com Best Western Hotel: 423-282-2126. A very fine hotel which offers Sterling Auction a discount rate is the Carnegie Hotel 1216 W State of Franklin Rd, (423) 979-6400

12. Please call for condition report on sale lots or email us. We do send out multiple photos by email of any lot in the auction .By registering for this auction you accept the terms and give Kimball M. Sterling auctions the right to charge your credit card on file for purchases and shipping, which you have entered on your registration.

13. The auction will be conducted on Saturday October 20th at 1:00 Eastern time in our gallery and also live on the net.

14. Parking service is free.



1. STERLING AND IVORY DRESS

Late 19th Century-A signed and numbered silver handle which is attached to an ivory collar, malacca shaft and 2" horn ferrule (H. 4 ½" x 1 ¼", OL. 34 ½")

\$400-\$800

2. CARVED IVORY DRESS

Late 19th Century-A carved ivory knob attached to a silver collar, partridge wood shaft and a bi-metal ferrule (H. 1 ¾" x 2", OL. 36 ½")

\$300-\$500



3. ABALONE AND IVORY

Early 18th Century-The handle has an dime size inlaid abalone disk ,two silver eye-lets, coin silver collar, malacca shaft and a 3" brass spike ferrule (H. 2" x 1 ¾", OL. 36")

\$400-\$800





4. CARVED IVORY SINISTER LADY

Late 19th Century - The carved ivory face has an exotic wood spacer attached to the balance of the ivory handle, an exotic wood shaft and a 1" bone ferrule (H. 4 1/2" x 2", OL. 33")

\$400-\$800

5. IVORY KNOB

Mid 19th Century - Two silver eyelets, no collar, massive stepped bamboo shaft and a 2 1/2" worn, brass ferrule (H. 2 1/4" x 2", OL. 36 1/2")

\$400-\$800



6. EXOTIC WOOD AND SILVER DOG

Early 20th Century - A signed silver dog with two-color bulging glass eyes, exotic wood shaft and a 2" horn ferrule (H. 2" x 1 1/2", OL. 35 3/4")

\$400-\$800



7. FRENCH HAND PAINTED PORCELAIN PORTRAIT

Mid 19th Century-A portrait cane with cobalt blue and gold Moriage decoration. ornate gold collar, rich snakewood shaft and a 1 1/2" bi-metal ferrule (H. 3 1/2" x 1 1/2", OL. 36 1/4")

\$1000-\$1500



8. SALESMAN'S SAMPLES

Circa 1880 to 1930-An interesting group of various salesmen's samples and possibly children's canes. Average length 24"

\$1000-\$1500





9. BAMBOO SWORD CANE

Late 19th Century-A massive carved handle with a metal collar, bamboo shaft, 25" blade and a 1 ½" brass ferrule (H. 5" x 3 ¾", OL. 34 ¾")

\$400-\$600



10. GOLD PRESENTATION

The presentation to the presiding judge on the Court of Appeals. A very ornate overlaid gold handle, ebony shaft and a horn ferrule (H. 3 ¾" x 1 ¾", OL. 36")

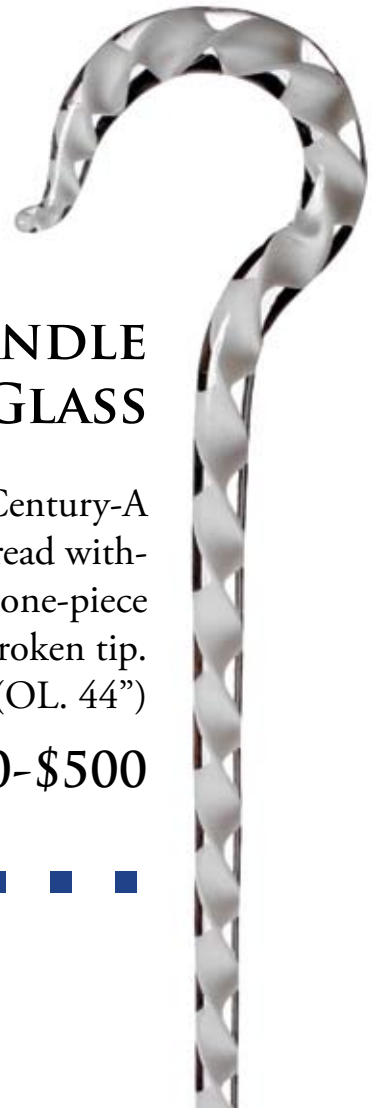
\$300-\$500



11. CROOK HANDLE GLASS

Early 19th Century-A white ribbon thread within a solid glass, one-piece cane. It has a broken tip. (OL. 44")

\$300-\$500





12. MOTHER OF PEARL SWORD CANE

Late 19th Century-A carved mother of pearl flower is inset into the handle of this sword cane which is covered throughout with cabochons of mother of pearl. It has a four-sided dagger blade with a locking mechanism for the handle. The shaft is an exotic wood, 11 " blade and a small 1" ferrule (H. 6" x 2", OL. 38")

\$800-\$1500



13. TOLEDO SWORD CANE

Late 19th Century-This crook handle is completely covered with leather. It has a Toledo 4-sided 27 5/8" blade with a locking mechanism and a 1" bi-metal ferrule (H. 6" x 4 3/4", OL. 35 1/2")

\$500-\$1000





14. IVORY DOG

Mid 19th Century-A very finely carved dog with glass eyes, silver collar, malacca shaft and a 1" bi-metal ferrule (H. 2 ½" x 2 ½", OL. 35")

\$800-\$1200

15. FULL IVORY DRESS

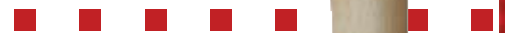
Victorian-A segmented full shaft, ivory cane with carved vines and branches. The handle has a gold cap with fancy monogramming and no ferrule (H. 2 ½" x 2 ½", OL. 35")

\$1200-\$1500

16. CARVED IVORY

Victorian-A Continental carved ivory with a family crest and a belt collar. The cane has a malacca shaft and a 2 ½" bone ferrule (H. 5 ½" x 3 3/8", OL. 34 ½")

\$400-\$600



17. A COLLECTION OF FIVE

A collection of five leather disc canes. They date from 1880 to 1900

\$400-\$600



18. CARVED STAG



Late 19th Century-A very unique carved glass eyed bird with a caterpillar in it's beak. The cane has a metal collar, one metal eyelet, natural branch shaft and a 3" spike metal ferrule (H. 3" x 4 1/4", OL. 35 3/8")

\$400-\$800



19. FOLK-ART HAND AND SNAKE

Early 20th Century-A fully carved folk-art stick with snakes, animals and various plants. This is a very high relief carved cane made from a soft wood with no ferrule (OL. 36 1/2")

\$400-\$800





20. FOLK-ART D'ALSACE

Dated 1914-A carved snake with brass eyes, inscribed carved heart and a 2 ½" iron spike ferrule (OL. 38 ")

\$400-\$600



21. CARVED NUDE

Circa 1860-A very finely carved French one-piece handle with original patina which is attached, unnoticeably, to a hardwood shaft. There is continuous carving from the handle to the shaft which makes it appear to be a one-piece cane. The carving of the lady has immaculate detail and it also has a 2" metal ferrule (H. 3 ¼" x 4 ¼", OL. 36")

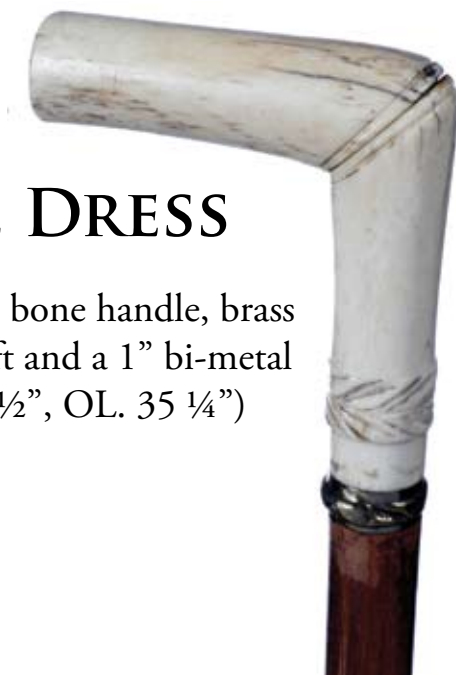
\$1000-\$2000



22. BONE DRESS

A two-piece carved bone handle, brass collar, malacca shaft and a 1" bi-metal ferrule (H. 4" x 3 1/2", OL. 35 1/4")

\$200-\$300



23. GOLD FILLED DRESS

Late 19th Century-Ornate handle, ebony shaft and a bi-metal ferrule (H. 2 1/4" x 1 1/2", OL. 34 1/2")

\$100-\$250



24. GOLD FILLED DRESS

Late 19th century - An ornate Kentucky presentation, maple shaft and a small brass ferrule (H. 1 1/2" x 1 3/4", OL. 36 1/4")

\$100-\$300



25. FAUX TORTOISE DRESS

Circa 1920-This handle has a very good tortoise appearance, a signed sterling collar, exotic wood shaft and a 1" bone ferrule (H. 4" x 4 1/2", OL. 35 1/4")

\$200-\$300

26. CELLULOID JOCKEY

Early 20th Century-A molded handle with two-color eyes, beaded silver collar, hardwood shaft and a bi-metal ferrule (H. 2" x 4 3/4", OL. 37 1/4")

\$100-\$300



27. PAIR OF GOLD FILLED DRESS

Circa 1900-Two very nicely engraved handles, ebony shafts and bi-metal ferrules (Average length 35 1/2")

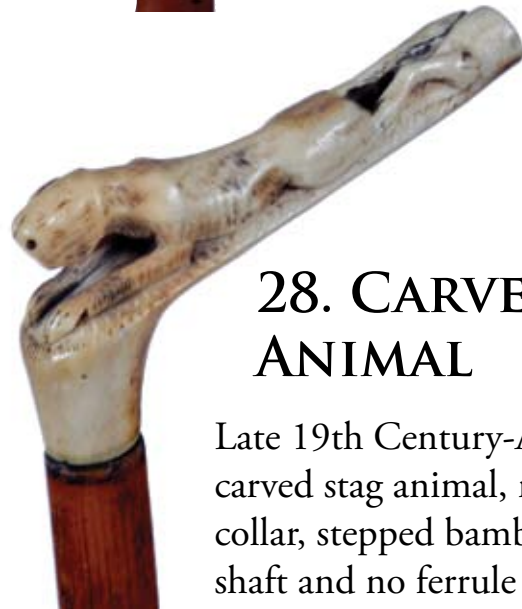
\$200-\$400



28. CARVED ANIMAL

Late 19th Century-A carved stag animal, no collar, stepped bamboo shaft and no ferrule (H. 2 1/2" x 4 1/2", OL. 33")

\$100-\$200



29. PAIR OF IVORY CANES

19th Century-One with eyelets, one without, one with ferrule, one without (Average length 34")

\$200-\$400

30. HORSE MEASURE SYSTEM STICK

Circa 1930-A crook handle which has a black painted finish and a metal ferrule with a stopper. The level is in tact and working on the brass cross bar (H. 5", OL. 39")

\$200-\$400



31. CARVED HORN ELEPHANT

Early 20th Century-The elephant has ivory tusk, copper ears and inlaid eyes. The shaft is hardwood and it has a 1" horn ferrule (H. 4" x 3 1/2", OL. 37")

\$200-\$300



32. CARVED IVORY RATS WITH GARNET



Menji Period-This finely carved Japanese ivory handle has an inlaid two carat garnet in the top of the handle. It has a silver collar, a natural grown Asian shaft and a metal ferrule (H. 2" x 1 1/2", OL. 34 1/4")

\$500-\$1000





33. IVORY VIRGIN MARY

Art Nouveau-A very finely carved religious rendition honoring the Virgin Mary. It has a ornate gold collar and a rich snakewood shaft and a 1" ivory ferrule (H. 4 3/4" x 1 1/2", OL. 35 3/4")

\$800-\$1200

34. YALE CLASS OF 1888

An ornate inscribed silver handle, birchwood shaft and a 1" bi-metal ferrule (H. 1 7/8" x 1 1/4", OL. 34 3/4")

\$200-\$400



35. IMARI DRESS

Circa 1890-Exotic wood shaft, brass collar and a bi-metal ferrule (H. 4 3/8" x 1", OL. 36")

\$300-\$500



36. RUTGERS CLASS OF 1890

An ornate silver handle, malacca shaft and a bi-metal ferrule (H. 2 1/8" x 1 1/4", OL. 35 1/4")

\$200-\$400





37. GERMAN RESERVISTS CANE

Circa 1900-The soldier is in Prussian attire, a woven thread covered shaft with original tassels which is flexible and a metal ferrule (H. 2 ½" x 1 ¾", OL. 34 ¼")

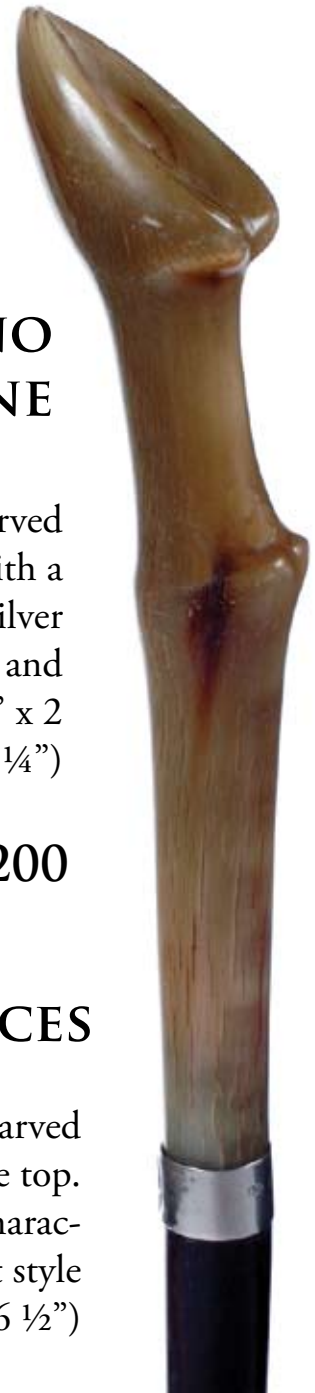
\$300-\$500



38. RHINO HOOF CANE

Circa 1890-A large carved rhino horn handle with a British hallmarked silver collar, hardwood shaft and a brass ferrule (H. 8 ¼" x 2 ¾", OL. 38 ¼")

\$600-\$1200



39. IVORY 1000 FACES

Late 19th Century-A very finely carved handle with a large carved face on the top. The handle is signed with oriental characters, rich mahogany shaft and a bullet style ferrule (H. 1 ¾" x 1 ¾", OL. 36 ½")

\$500-\$1000





40. CARVED IVORY DOG

Late 19th Century-A precisely carved handle with two-color glass eyes, ornate silver collar, malacca shaft and a brass ferrule (H. 3 3/8" x 1 1/2", OL. 35 1/8")

\$500-\$1000



41. SILVER KNIGHTS ARMOR

Circa 1900-A very unique sterling handle, exotic wood shaft and a 1 1/2" bone ferrule (H. 2 1/2" x 4", OL. 36")

\$300-\$500



42. LALIQUE STYLE DRESS

Circa 1900-A unique frosted glass handle done in the style of Lalique, a large brass collar, malacca shaft and a 1" bi-metal ferrule (H. 4 1/2" x 4 3/4", OL. 36")

\$800-\$1200



43. EROTIC IVORY AUTOMATION \$4000 - \$8000

Late 19th Century-Silver British hallmarked handle with hinged lid. When the lid is opened, a carved ivory couple may be seen in a compromising position. By depressing the button on the outside of the handle, the couple begin their automation. Massive snakewood shaft and a bi-metal ferrule (H. 3 $\frac{3}{4}$ " x 1 $\frac{7}{8}$ ", OL. 36 $\frac{1}{2}$ ")



44. ART NOUVEAU IVORY

A unique ivory and signed sterling handle with a signed sterling collar, an ebony shaft and a 1" metal ferrule (H. 2" x 5", OL. 36")

\$400-\$800



45. KING OF THE JUNGLE

Victorian-A very nicely carved "king of the jungle" with two-color glass eyes, with a signed Lyon silver collar. It has a malacca shaft and a 1" horn ferrule (H. 3 1/2" x 4 1/2", OL. 35 1/2")

\$1000-\$1500



46. FINE FOLK-ART

Circa 1900-A whimsical carving of humans and animals. There is damage to one beak of the bird. It has a one-piece tree trunk shaft with no ferrule (H. 6 3/4, OL. 33")

\$300-\$500





47. IVORY CAT

Late 19th Century-A finely carved ivory handle with great detail and two-color glass eyes. Gold collar, ebony shaft and a horn ferrule (H. 2 ½" x 2", OL. 36")

\$2000-\$3000



48. CARVED FOLK-ART

Circa 1900-One-piece carved snake, alligator and monkey cane with no ferrule (OL. 35")

\$400-\$800





49. FRATERNAL FOLK-ART

Dated 1914-Carved with handshakes, snakes, and symbols. No ferrule (OL. 35 7/8")

\$300-\$500

50. A PAIR OF VICTORIAN GOLD-FILLED PRESENTATION STICKS

With hardwood shafts and metal ferrule
(H. 1 3/4" x 1 1/4", OL. 33 1/2" average)

\$200-\$300



51. A PAIR OF TURN OF THE CENTURY FOLK-ART

One stylized horse and one dog (OL. 33 1/2" average)

\$200-\$400

52. A PAIR OF PERIOD CAP BUSTERS

Both are fine original examples of
this genre (H. 1 ½" x 2 ¾", OL.
31 7/8")

\$200-\$400



53. FOUR CARNIVAL CANES

All have original painted shafts and
three have original ferrules (Average
length 35")

\$200-\$400



54. A PAIR OF GOLD FILLED- VICTORIAN DRESS STICKS

Ebony shafts and metal
ferrules (Average length
32")

\$200-\$400





55. FLASHLIGHT SYSTEM STICKS

Early 20th Century-These two should make one good stick \$200-\$300

56. FIVE CARNIVAL CANES

All have original shafts and are in fine condition (Average length 34")

\$200-\$400



57. FOLK-ART SNAKE

Circa 1900-A one-piece carved and polychromed stick with beaded eyes. This cane is probably an early lodge piece and has no ferrule (OL. 37")

\$1000-\$1500

58. FOLK-ART SNAKE STAFF

Early 20th Century-A one piece carved and polychromed snake with 90 percent original surface. The snake's fangs and tongue are found materials (OL. 53 ¾")

\$500-\$1000





59. THREE FOLK-ART CANES

Circa 1900-Two of the canes are carved diamond willow and the other is a coiled snake with painted eyes and mouth (Average length 32 ½")

\$300-\$500

60. HORSE MEASURE SYSTEM STICK

Early 20th Century-The level is working, the ruler measures both in hands and centimeters, bamboo shaft and a 2" ferrule (OL. 37 ½")

\$200-\$400



61. CARVED IVORY

Circa 1890-Carved ivory handle which is attached to an engraved silver collar. An ebonized shaft and no ferrule (H. 5 ¾" x 4 5/8", OL. 36")

\$200-\$400



62. FOLK-ART LADY

Circa 1880-A primitive carved hardwood shaft with no ferrule (OL. 32 ¼")

\$200-\$300



63. IVORY KNOB

Early 19th Century-An ivory knob with an inlaid silver medallion, silver collar, two silver eyelets, malacca shaft and a 3" metal ferrule (H. 2 3/8" x 1 1/2", OL. 34 3/8")

\$400-\$800



64. AFRICAN AMERICAN FOLK

Circa 1900-This cane is done in the Jacksonville Style with an alligator which is looking at a very stylized head. It is a one-piece twig spur shaft with a shotgun shell ferrule (OL. 35 1/4")

\$400-\$600



65. THREE GOLD-FILLED VICTORIAN DRESS

Each has a hardwood shaft and a bi-metal ferrule (Average length 35")

\$300-\$600



66. ELEPHANT HANDLERS SYSTEM STICK

Early 20th Century-A typical crook handle with an elephant hook as a ferrule. A massive hardwood shaft has an early coat of white paint (OL. 35 ¼")

\$300-\$500



67. IVORY DRESS

Circa 1880-Ornate gold ribbed collar, malacca shaft and a bi-metal ferrule (H. 2" x 3 ½", OL. 34 ½")

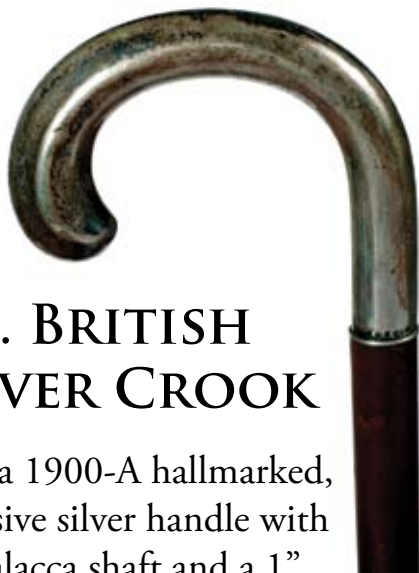
\$200-\$400



69. BRITISH SILVER CROOK

Circa 1900-A hallmarked, massive silver handle with a malacca shaft and a 1" metal ferrule. The handle is engraved and has minor damage throughout (H. 4 ½" x 5 ¼", OL. 34")

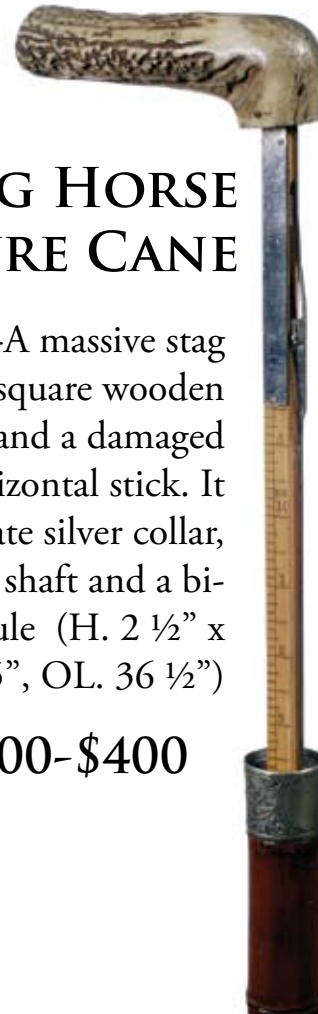
\$200-\$300



68. STAG HORSE MEASURE CANE

Circa 1880-A massive stag handle, a square wooden measure and a damaged metal, horizontal stick. It has an ornate silver collar, a bamboo shaft and a bi-metal ferrule (H. 2 ½" x 5", OL. 36 ½")

\$200-\$400



70. MAPLE SYRUP TESTING STICK

Mid 19th Century- Octagonal silver handle, rich mahogany shaft and a 2" metal ferrule. By pulling the cane handle a 24" metal gutter appears, the gutter has a very strong essence of maple syrup (H. 5 ¾" x 1 ½", OL. 35")



\$400-\$800

71. FOLK-ART STAG

Victorian-Natural antler, iron collar and a completely crosshatch carved shaft with a metal ferrule (H. 2 ¾" x 7", OL. 33 ½")



\$200-\$400



72. CARVED BAMBOO

Circa 1890-Fully carved and decorated bamboo, one-piece stick with a brass ferrule (OL. 36")

\$200-\$300



73. FLUTE SYSTEM STICK

Late 19th Century - Ornate silver handle, silver mountings and silver inlay, ebony shaft and a 2" bi-metal ferrule (OL. 36")

\$1000-\$1500

74. NAUTICAL WHALEBONE

Mid 19th Century - A very unique example of a nautical cane with a smiling copper flashed whale. The sculpture is a sand casting. It is a one piece handle with a one piece whalebone shaft and a copper ferrule (H. 2" x 3 3/4", OL. 37 1/2")

\$1000-\$2000



75. BRAIDED LEATHER

Circa 1900-A one piece braided leather over wood cane with no ferrule (OL. 35 1/4")

\$200-\$250





76. TORCH SYSTEM STICK

Mid 19th Century - Tin shaft which has a handle which unscrews and exposes a cotton wick for the torch (H. 1 ½" x 2", OL. 33 ½")

\$400-\$800



77. CARVED IVORY DOG

Circa 1880-A nicely carved handle, exotic wood shaft and a metal ferrule (H. 2 ¾" x 3 ½", OL. 37 ¾")

\$300-\$500



78. IRON AND BRASS CHEROOT

Late 19th Century-Southern Pine Shaft and a 2 ½" metal ferrule (H. 2" x 3", OL. 34 ½")

\$500-\$1000



79. FOLK-ART SNAKE

Circa 1900-An applied pommel handle, gold filled collar and a snake which appears to have a fire opal inlaid in the top of its head. The snake has tiny copper eyes and the shaft is polychromed (H. 1 7/8" x 1 ½", OL. 34 3/8")

\$300-\$500

80. UMBRELLA SYSTEM STICK

Early 20th Century-The umbrella fabric is in fine condition except for a few minor pin holes. The handle is made of a bakelite or celluloid type of substance and the shaft telescopes perfectly (H. 5 ½" x 5", OL. 35 ¼")

\$400-\$600



81. INLAID DRESS

Circa 1880-The cane is an exotic wood one-piece shaft which has various designs of animals and scrolls which are inlaid with pewter. There's also inlaid small ivory circles throughout, and it has a bi-metal ferrule (OL. 35 5/8")

\$400-\$600



82. TIPPLER STICK

Circa 1900-An Austrian made tippler stick with a faux tortoise inlaid in the top. It has a hardwood shaft and a bi-metal ferrule and the flask is in good condition (H. 1 ¼" x 1 ¼", OL. 35 ¾")

\$200-\$400



83. A PAIR OF G.A.R. CANES

One is from the annual encampment, both have wood shafts and only one has a ferrule (Average length 34 ¼")

\$400-\$600



84. WILLIAM MCKINLEY

This is a metal campaign cane which is in original as found condition with a hardwood shaft and no ferrule (H. 3 ½" x 1 ½", OL. 34 ¾")

\$200-\$250



85. SHARK VERTEBRAE DRESS

Victorian-Silver pommel handle and a brass ferrule (H. 1 5/8" x 1 3/8", OL. 36")

\$200-\$300



86. SILVER DRESS

Dated 1885-Ebony shaft with no ferrule. This cane appears to be a heavy silver-plate over lead which would make it a defensive stick (H. 2 ½" x 1 ¾", OL. 34")

\$100-\$200



87. ASIAN SILVER

Circa 1880-A unique silver handle with dragons, malacca shaft and a 1 ½" metal ferrule (H. 1 ½" x 1 ¾", OL. 34 ¼")

\$300-\$500



88. FOLK-ART FIST

Circa 1870-A one-piece carved natural branch cane with no ferrule (OL. 37")

\$100-\$200



89. THREE GOLD FILLED DRESS CANES

Assorted shafts and two with ferrules (Average length 35 ½")

\$200-\$300

90. CARVED ALLIGATORS

\$200-\$300



Early 20th Century-A fully carved alligator handle with a carved gator on the hardwood shaft. It has a bi-metal ferrule (H. 2" x 5", OL. 35")



91. DARTMOUTH COLLEGE

Dated 1921-This was R. Ransom Wells college cane. It is typical but in much better condition than most of these canes. It has 1 ½" metal ferrule (OL. 35 ¾")

\$200-\$400



92. FOLK-ART THUMB

Circa 1860-Bone handle, nickel collar, two bone carved eyelets and a brass ferrule (H. 2" x 1 3/8", OL. 33")

\$300-\$500





93. HORSE MEASURE SYSTEM STICK

Circa 1920-Metal measure with intact level on the horizontal, bamboo shaft and a 2" metal ferrule (OL. 36 1/2")

\$200-\$400

94. PIPE SYSTEM STICK

Late 19th Century-A very nice example of a briar wood handle and a twig spur shaft with a 2" bi-metal ferrule (H. 2 1/2" x 3 1/2", OL. 35 1/2")



\$300-\$500



95. COLUMBUS EXPOSITION

Circa 1893-A souvenir stick from the fair with a bamboo style shaft and a metal ferrule (H. 3" x 1", OL. 35 7/8")

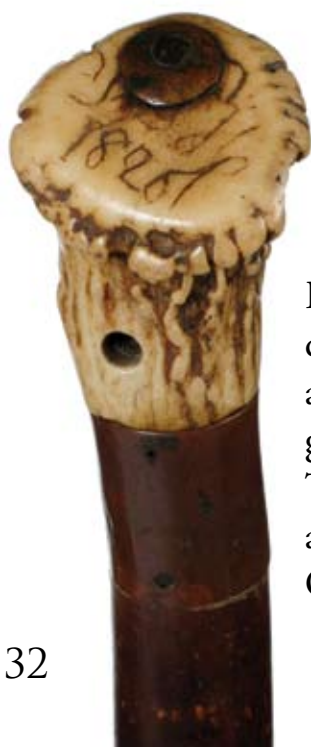
\$100-\$200



96. CARVED GATOR

Early 20th Century-Carved gator handle attached to a twig spur shaft with no ferrule (5 1/4", OL. 33 1/2")

\$100-\$200



97. DAGGER SYSTEM STICK

Dated 1826-The stag handle with drilled eyelets, a copper ferrule, and a hand forged 10" four-sided dagger, twig spur shaft and no ferrule. The shaft has had a very early repair about midway. (H. 3 1/2" x 1 3/4", OL. 37")

\$300-\$600

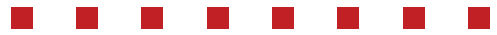




98. ORNATE CAMPAIGN STOOL

Mid 19th Century-A very unique system stick with an oak shaft which has a pair of engraved collars. There is a silver knob and a 1" metal ferrule. The canvas seat needs minor repair on one corner (H. 9" x 1 3/4", OL. 35 1/2")

\$400-\$800



99. HARDWOOD SWORD CANE

Mid 19th Century-A faux bamboo turned hardwood cane with a forged blade which has an impression of a king with a crown. It has no locking mechanism, 20 1/2" blade metal ferrule and it is missing a piece of wood where the handle gathers with the shaft (H. 6 1/4" x 1 1/4", OL. 36")

\$300-\$500



100. PAIR OF SILVER DRESS CANES

One appears to be Asian and the other American Victorian (Average OL. 35 3/8")

\$200-\$400



101. IVORY KNOB

Circa 1830-Nice original cane with a silver collar, two silver eyelets, malacca shaft and a 2" brass ferrule (H. 2 1/2" x 1 1/2", OL. 32 1/2")

\$300-\$500

102. HORN EAGLE

Victorian-A very unique carved eagle from buffalo horn, cow horn collar, twig spur shaft and a 1" brass ferrule (H. 4 ½" x 3", OL. 37 ½")

\$500-\$1000



103. FOLK-ART GUN

Circa 1860-This under hammer percussion is truly a homemade folk-art weapon. The American walnut handle is done in a typical stylized rendition. It is probably a 12 gauge and is in need of minor repair. (H. 3 ¾" x 3 ½", OL. 33 ¼")

\$1000-\$1500



105. CARVED WOOD ADVERTISING

Circa 1930-A nice example of the "Lenonis" from the Berlo Vending Company Confection Cabinet Corporation, tin collar, ebonized shaft and a metal ferrule (OL. 36 ¼")

\$200-\$400



104. THREE GOLD FILLED VICTORIAN

With hardwood and ebony shafts (H. 4 ¼" x 1 ¾", OL. 35 3/8")

\$200-\$300



106. FLASHLIGHT SYSTEM STICK

Circa 1930-A nice example of this genre with some minor splitting, working condition unknown. The collar has a top to bottom separation and it has a horn ferrule (H. 6 ¼" x 5 ½", OL. 37 ½")

\$200-\$400



107. HOLLOW GLASS PARADE

Late 19th Century-A mint hand blown three-color, threaded hollow parade cane (OL. 52")

\$600-\$1200



108. CAMPAIGN STOOL

Circa 1880-Seat material is in fine condition, oak shaft and a metal ferrule (H. 9" x 1 ½", OL. 35 3/8")

\$300-\$500



109. NAUTICAL WHALE BONE

Mid 19th Century-A folkly handle with inlaid abalone and a baleen star. There are three ivory collars with four baleen spacers. The upper part of the bone shaft has ridges that turn into a symmetrical shaft after about 6" (H. 2 ½" x 1 ½", OL. 36")

\$2500-\$3500



110. IVORY DRESS

Victorian-A segmented full ivory cane which has a pommel handle, there is a large garnet and various other stones inlay (OL. 35 7/8")

\$1000-\$1500



111. NAUTICAL WHALE BONE

Mid 19th Century-Whale ivory handle, whale bone shaft and no ferrule (H 1 5/8" x 1 1/8" OL. 33 5/8")

\$500-\$1000





112. FOLK-ART MAN

Early 20th Century-A one-piece carved man with eyelets and a 2" brass ferrule (OL. 33 1/2")

\$100-\$200

113. INDO-PERSIAN SWORD CANE

Late 19th Century-The entire all steel cane is highly overlaid with silver damascened floral designs. When the handle is unscrewed from the shaft a 7" dagger with four sides appears. It has a very unusual bi-metal spiked ferrule (H. 4" x 6 3/4", OL. 3 1/4")

\$2500-\$3500



114. IVORY DRESS

Mid 19th Century-Nice original cane with an ornate gold-filled collar, malacca shaft and a 2" horn ferrule (H. 1 3/4" x 3 1/2", OL. 34 1/4")

\$300-\$500



115. IVORY KNOB SWORD CANE

Mid 19th Century-Ornate silver collar, two silver eyelets, step bamboo shaft, a 19 ½" triangular blade and a one-piece, brass and metal ferrule (H. 1 ¾" x 1 5/8", OL. 34 5/8")

\$700-\$1200



116. MUSHROOM IVORY KNOB

Late 18th Century-Large silver collar, early style silver eyelets, rich Mahogany shaft and a 3" brass and metal, tapering ferrule (H. 2 7/8" x 1 ½", OL. 35 ¼")

\$1000-\$1500



117. IVORY L SHAPED HANDLE

Mid 19th Century-The handle is decorated with silver piquet inlaid and silver plaque, silver mounts and eyelets, ebony shaft and a bi-metal ferrule (H. 2" x 4 ½", OL. 33 1/8")

\$1000-\$1500



118. IVORY BOAR'S TUSK

Victorian-The tusk is carved in the form a dog with two-color glass eyes and a silver beaded collar. It is attached by a sterling collar to an ebony shaft with a mushroom silver ferrule (H. 1" x 4 3/8", OL. 35 1/2")

\$600-\$900



119. 14 KT DRESS CANE

Early 20th Century-Engraved mushroom style handle which is attached to an ebony shaft with a horn ferrule (H. 1" x 1", OL. 36")

\$800-\$1000



120. ASIAN IVORY

Late 19th Century-The carved ivory handle with turtle, frog, wren and monkey. It has a rich mahogany shaft, a brass collar and a brass ferrule (H. 4" x 1 1/4", OL. 34 1/8")

\$1800-\$2200



121. WHALING BALEEN SCRIMSHAW

Mid 19th Century-This is the first all Baleen cane that we have ever offered in our auctions. It has a carved handle and a mother of pearl inlaid button in the shaft. The entire shaft is spool carved and it has a bi-metal ferule (OL. 36")

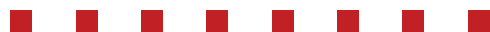
\$2500-\$3500



122. WHALING SCRIMSHAW

Mid 19th Century-Octagonal, ivory handle which is inlaid with abalone in the top, two baleen spacers, whalebone shaft and no ferule (H. 3 3/4" x 1 1/8", OL. 31 1/4")

\$1800-\$2200



123. FRENCH SWORD CANE



Circa 1800-Silver mounted with silver caps, eyelets and band. The blade is signed "Morian Paris". It has a heavy rapier 29" long blade with full-length blood grooves. The handle and shaft are both very rich honey malacca and it has a bi-metal ferrule (H. 2 1/8" x 1 5/8", OL. 35 1/2")

\$1500-\$2000



124. ART NOUVEAU SILVER

Late 19th Century-Two classic Art Nouveau female bust are embossed and filigreed to a signed American sterling collar. It has a hexagonal, ebonized shaft and a sterling ferrule. The handle could use some dent removal to make it a true masterpiece (H. 5 7/8" x 1", OL. 35 1/4")

\$700-\$1000

125. G.A.R. FOLK-ART

Late 19th Century-Signed Canby #17 and a lead ferrule. This stick depicts soldiers shooting, General Grant, and Abraham Lincoln. It also has carved military medals and animals (OL. 34 3/8")

\$1800-\$2500



126. FRENCH DECORATIVE CANE

Early 20th Century-This cane is a patriotic piece from WWI. It displays a French soldier, a poilu, on top as he chokes a German soldier. The German is in a bonnet rather than a helmet. Hardwood shaft and a 1" metal ferrule. This cane or an identical one is on page 174 of "Cane Curiosa" by Catherine Dike (H. 4" x 4 5/8", OL. 37 1/2")

\$1000-\$1500



127. 1000 FACES IVORY

Late 19th Century-There are 31 different faces with inked highlights. The cane is signed with Kangi pictograms, hardwood shaft, 18kt gold collar, and a 1 1/2" bone ferrule (H. 1 5/8" x 4 1/8", OL. 34 1/2")

\$800-\$1200



128. HOLUSKA WATCH CANE

Late 19th Century-The inlaid silver ornate handle has a medallion of St. George. The watch is in fine working condition with serial numbers on the internal works. This is a top of the line example of this type of cane. The shaft is malacca and it has a 1" metal ferrule (H. 1 3/8" x 1 1/2", OL. 35")

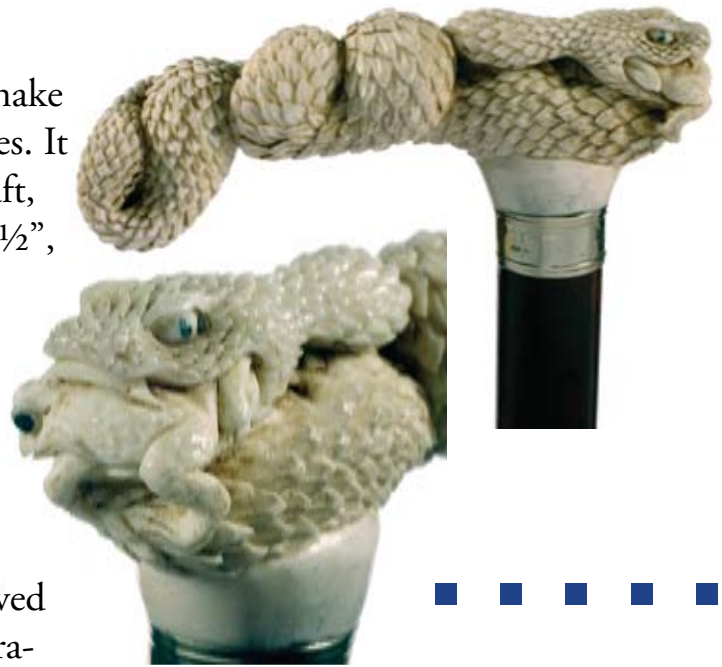
\$2500-\$3500



129. CARVED STAG

Early 20th Century-A finely carved snake with a frog in its mouth with glass eyes. It has a silver collar, rich snakewood shaft, and a bi-metal ferrule (H. 1 5/8" x 4 1/2", OL. 36")

\$800-\$1200



130. IVORY GHOUL

Early 20th Century-Carved elephant ivory head attached to a 4" rhino carved faux twig spur, silver collar with separation, malacca shaft and a bi-metal ferrule (H. 2 1/2" x 2 1/2", OL. 33 1/4")

\$800-\$1200



131. LEATHER DAY CANE

Mid 19th Century-A precisely braided handle over a rich malacca shaft with a 3" brass ferrule (H. 6 1/2" x 5 1/2", OL. 36 1/2")

\$300-\$600



132. UGLY IVORY MAN

Late 19th Century-Hardwood shaft and a horn ferrule (H. 2" x 1 5/8", OL. 33 3/4")

\$500-\$600





133. CARVED FOLK-ART

Early 20th Century-A prime example of the Greek islands carving, one-piece hardwood shaft and a bi-metal ferrule (OL. 36 ¾")

\$200-\$400



134. SUNDAY STICK

Early 20th Century-A signed sterling handle, oak shaft and a bi-metal ferrule (H. 3" x 3 ½", OL. 36")

\$300-\$500



135. IVORY DOCTOR'S CANE

Victorian-A nicely carved snake, signed sterling handle and a hardwood shaft with a bone ferrule (H. 4 ¾" x 1 ¾", OL. 36 ¼")

\$500-\$800



136. STERLING SKULL

This contemporary masterpiece is from the shop of C. W. Daugherty and is one of the finest crafted canes on the market today. His canes are now hallmarked C. W. D. It has a fine snakewood shaft and a 1 ½" ivory ferrule (H. 3 ½" x 2 ½", OL. 37")

\$600-\$1000



137. CARVED SNAKE

20th Century-Gold collar, rich mahogany shaft and a horn ferrule (H. 4 1/4" x 4 1/4", OL. 36 3/4")

\$200-\$400



139. IVORY AND EBONY DRESS

Art Nouveau-The ivory handle, gold spacer, triangle ebony shaft and a horn ferrule (H. 3/4" x 1 1/4", OL. 35 5/8")

\$300-\$400

138. SILVER CROOK HANDLE SWORD

Late 19th Century-A nice silver dress with a 24 1/2" 4-sided signed Toledo blade, brass collar, faux bamboo shaft and no ferrule (H. 5 1/4" x 4 3/4", OL. 36 1/2")

\$500-\$1000



140. HORN AND SILVER SWORD

Victorian-20 7/8" 4-sided blade, silver collar, ebonized shaft and a bi-metal ferrule (H. 2 3/4" x 4 1/2", OL. 35 5/8")

\$400-\$600





141. MASONIC IVORY

Late 19th Century-An ivory knob, inlaid coin silver medallion with a Masonic emblem and engraved name, silver collar, hardwood shaft and a 3" bi-metal ferrule (H. 2" x 1 3/8", OL. 35 5/8")

\$300-\$500

142. PORTRAIT POLITICAL

Late 19th Century-A black and white portrait under glass, flexible ebonized shaft and no ferrule (H. 1 1/8" x 1", OL. 34 1/8")

\$200-\$300

143. CARVED FOLK-ART

Late 19th Century-A finely carved face with ivory teeth, brass collar, natural branch shaft and a bi-metal ferrule (H. 3 1/2" x 2 3/8", OL. 36 3/4")

\$300-\$500

144. DAMASCENE DRESS

Late 19th Century-A petite yet remarkable handle, ebony shaft and a 1 1/2" brass and metal, spike ferrule (H. 1 7/8" x 3/4", OL. 35 7/8")

\$300-\$500

145. CARVED GOPHER

Early 20th Century-Two color glass eyes, polychromed handle, a one-piece twig spur cane and a horn ferrule (OL. 33 3/8")

\$300-\$500





\$200-\$400

146. GOLD-FILLED DRESS

Dated 1906 - A stout gold filled handle (with two dings on the lower end), ebony shaft and a bi-metal ferrule (H. 3" x 4 7/8", OL. 35 1/2")



147. IVORY AND HORN

Late 19th Century-Ivory knob handle, spool carved full segmented shaft and a metal ferrule (H. 1 3/4" x 1 3/4", OL. 35 3/4")

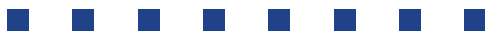
\$300-\$500



148. IVORY HOOF

Late 19th Century-Beaded silver collar, ebony shaft and a bone ferrule (H. 3 1/2" x 2 5/8", OL. 36 1/4")

\$300-\$500



149. LOOKING GLASS SYSTEM STICK

Late 19th Century-A silver handle which doubles as a magnifying glass, exotic wood shaft and a metal ferrule (H. 2 3/4" x 2 5/8", OL. 36 1/4")

\$600-\$1200



150. ORNATE SILVER DRESS

Art Nouveau-The handle has cattails and flowers, rich snakewood shaft, probably French and no ferrule (the handle has minor dents) (H. 4" x 4 1/8", OL. 35 1/2")

\$300-\$500



151. CARVED STAG

Late 19th Century-Brass collar, partridge wood shaft and a horn ferrule (H. 4 5/8" x 5/8", OL. 37 1/4")

\$300-\$400



152. DRESS SWORD CANE

Victorian-Gold filled handle, lacquered carved spacer, 17 1/8" blade, leather wrapped shaft and a bi-metal ferrule (H. 2 1/2" x 1 1/2", OL. 33 1/4")

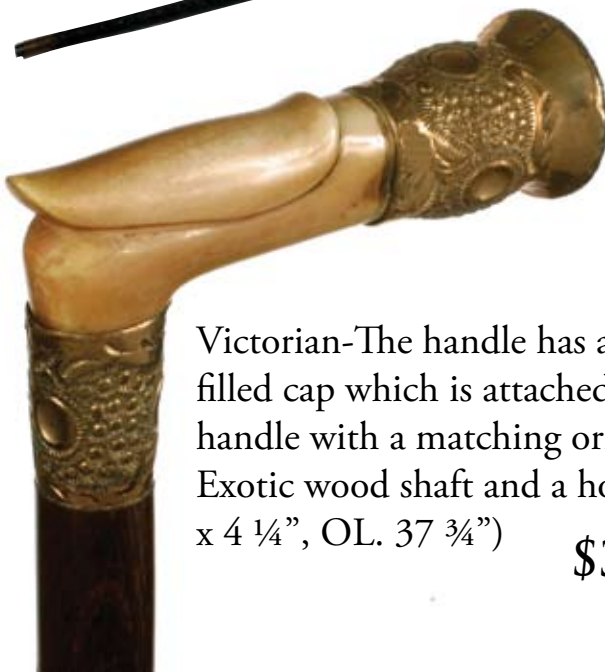
\$400-\$800



153. IVORY DRESS

Victorian-The handle has a high relief gold-filled cap which is attached to a walrus ivory handle with a matching ornate gold-filled collar. Exotic wood shaft and a horn ferrule (H. 2 3/8" x 4 1/4", OL. 37 3/4")

\$300-\$500



154. NOUVEAU NUDE

Late 19th Century-Handle appears to be a heavy silver plate with much detail work, snakewood shaft and a horn ferrule (H. 2 3/8" x 3 1/4", OL. 33 1/4")



\$400-\$600



155. IVORY KNOB

Late 19th Century-Nice large ivory knob, metal collar and a flexible leather disc shaft and a bi-metal ferrule (H. 3" x 1 3/4", OL. 33 3/4")

\$300-\$500



156. IVORY DRESS

Victorian-Ornate ivory collar, malacca shaft and 2" ivory ferrule with crack (H. 7 1/2" x 3 1/4", OL. 34 1/4")

\$300-\$500



157. CARVED ARAB

Mid 19th Century-Two-color glass eyes, carved 1-piece shaft and a silver ferrule (OL. 35")

\$500-\$1000



158. SILVER KITTY

Late 19th Century-Two-color glass eyes, petite hall-marked British handle, bamboo shaft and a small silver ferrule (H. 1 7/8" x 1 1/8", OL. 34 1/4")

\$500-\$1000



159. IVORY KNOB

Late 18th Century-Handle is inscribed with the name "Brackett", silver collar with two silver eyelets, malacca shaft and a 1/2" brass and metal ferrule (H. 2 1/2" x 1/2", OL. 36")

\$500-\$1000



160. AFRICAN AMERICAN DRESS

Early 20th Century-An Art Deco stylized silver-plate handle, zebra wood shaft and a bi-metal ferrule (H. 2 1/2" x 2", OL. 39")

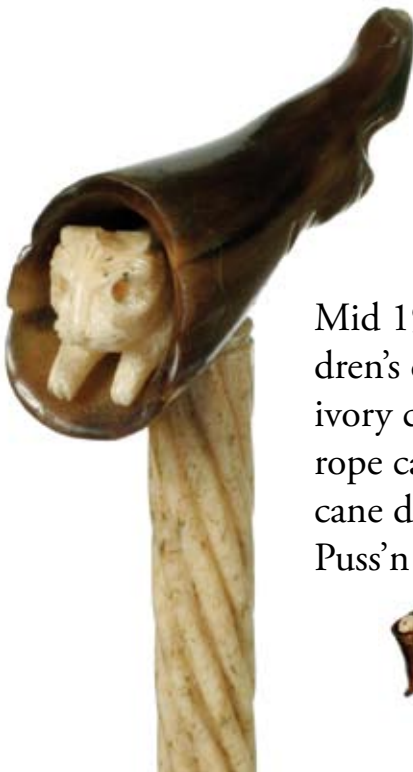
\$200-\$400



161. PUSS'N BOOTS WHALE BONE

Mid 19th Century-This whale bone children's cane has a carved horn boot with an ivory cat inside. The bone shaft has spiral rope carving on the upper end. We feel the cane depicts the old European Fairy Tale Puss'n Boots (H. 2" x 3 3/8", OL. 26 3/8")

\$800-\$1200



162. IVORY AND SILVER DRESS

Victorian-A silver overlaid ivory handle with a sterling end cap (minor dents) and a very ornate silver collar, stepped hardwood shaft and a bi-metal ferrule (H. 2" x 4 1/2", OL. 32 3/4")

\$300-\$500



163. IVORY DRESS

Late Victorian-Inscribed silver collar, ebony shaft and a 2" bi-metal ferrule (H. 3 3/4" x 3", OL. 35 5/8")

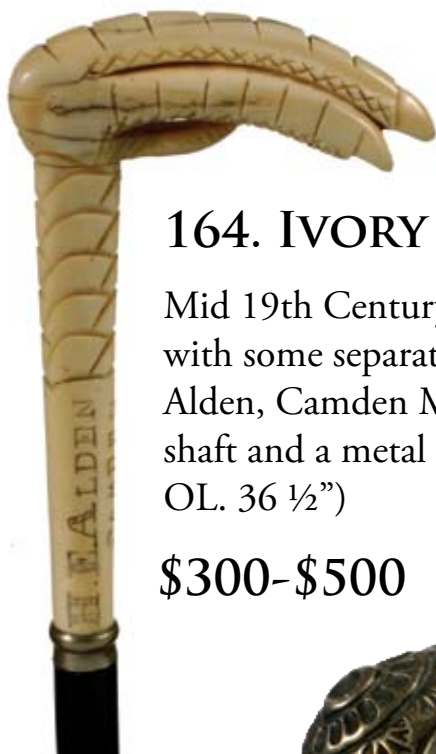
\$300-\$500



164. IVORY TALON

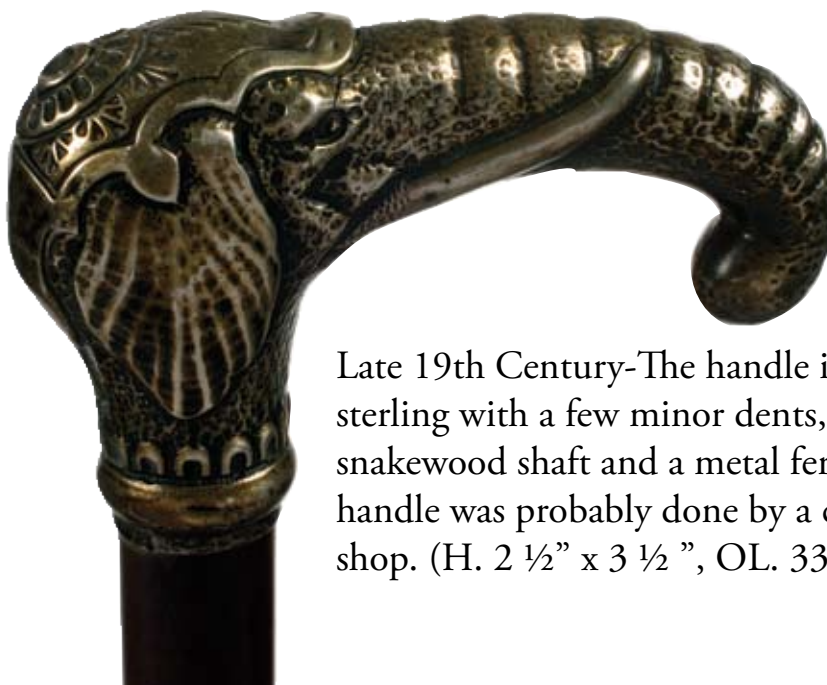
Mid 19th Century-A two-piece handle with some separations, inscribed "H. E. Alden, Camden Me.", silver collar, ebony shaft and a metal ferrule (H. 5 3/8" x 3 1/4", OL. 36 1/2")

\$300-\$500



165. SILVER ELEPHANT

\$500-\$1000



Late 19th Century-The handle is signed sterling with a few minor dents, early snakewood shaft and a metal ferrule. The handle was probably done by a custom shop. (H. 2 1/2" x 3 1/2", OL. 33 3/8")

166. HORN CRUTCH

Dated 1923-Massive horn handle, engraved "Boy's Association", 14Kt collar, malacca shaft and a horn ferrule (H. 3 ¾" x 5", OL. 36")

\$400-\$600



167. IVORY COURT CANE

Late 18th Century-Two silver eyelets, handle is inlaid with a horn circle, split ivory collar, malacca shaft and a 3 ½" brass ferrule (H. 1 ¾" x 1 ¼", OL. 35 3/8")

\$500-\$1000



168. CARVED IVORY SNAKE

Late 19th Century-Finely carved handle, ebonized shaft and a bi-metal ferrule (H. 2 3/8" x 1 ¼", OL. 35 ½")

\$300-\$500



170. KING TUT IVORY

Early 20th Century-Carved ivory handle, ebony shaft and a horn ferrule (H. 3 ¼" x 1 3/8", OL. 36")

\$300-\$500



169. IVORY AND SILVER

Late 19th Century-Signed sterling handle with ivory inlay, malacca shaft and a horn ferrule (H. 3 ½" x 2 ½", OL. 35")

\$400-\$600





171. WHISTLE STICK

Early 20th Century-"The City Whistle", exotic wood shaft and a bi-metal ferrule (H. 2 1/8" x 3 3/4", OL. 3 3/4")

\$500-\$800



172. CARVED BOAR

Late 19th Century-Boar's head carved from horn, ivory tusk, two glass eyes, hallmarked British collar, malacca shaft and a horn ferrule. One ivory tusk is missing its tip (H. 1 1/8" x 2 3/4", OL. 35")

\$300-\$500

173. IVORY SWORD STICK

Late 19th Century-Carved ivory animal with a horn and ivory spacer, locking 20 3/8" blade, bamboo shaft and an ivory ferrule (H. 2" x 4 1/8", OL. 36")

\$600-\$1200



174. CARVED IVORY DOGS

Dated 1903-Beaded glass eyes, 18Kt collars and a brass ferrule (OL. 36")



\$500-\$1000





175. CARVED IVORY

Late Victorian-Silver collar, ebony shaft and a horn ferrule (H. 5" x 1", OL. 35 1/2")

\$300-\$500



176. CARVED STAG

Late 19th Century-A carved L-sided handle, metal collar and a hand woven flexible shaft, with a spike ferrule (H. 1 1/8" x 3 5/8", OL. 33")

\$300-\$400

177. IVORY FIST AND SNAKE

Mid 19th Century-A petite ivory handle, lanyard holes, oak shaft and a 2 1/2" brass ferrule (H. 1 3/4" x 1 3/4", OL. 34 3/4")



\$300-\$600



178. IVORY TURKS KNOT

Late 19th Century-Ebonized shaft and 2" ivory ferrule (H. 2" x 1 3/4", OL. 34 3/4")

\$400-\$600



179. STERLING DRESS

Victorian-Signed sterling hoof handle, malacca shaft and a bi-metal ferrule (H. 3 1/8" x 4 3/8", OL. 35 1/2")

\$300-\$500

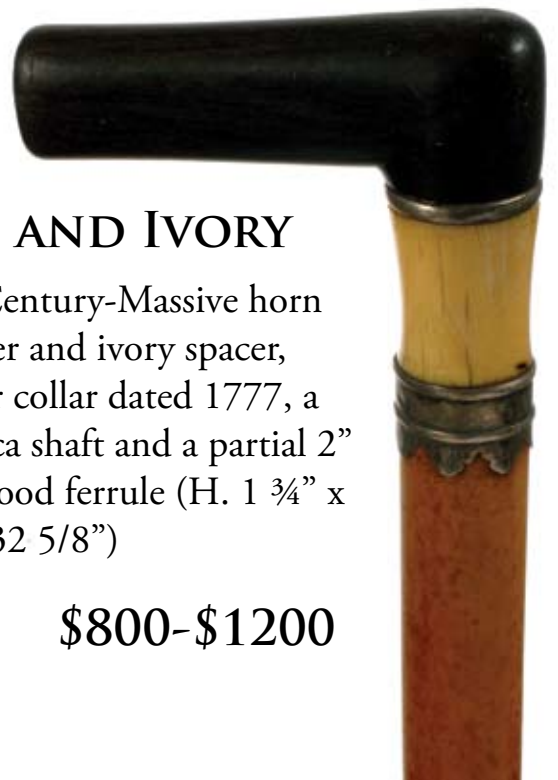




181. INLAID SUNDAY STICK

Late 19th Century-The handle is inlaid with wood and silver. A unique ivory and wood collar, oak shaft and a small metal ferrule (H. 3" x 2 3/4", OL. 35 7/8")

\$300-\$500



180. HORN AND IVORY

Late 18th Century-Massive horn handle, silver and ivory spacer, ornate silver collar dated 1777, a large malacca shaft and a partial 2" brass and wood ferrule (H. 1 3/4" x 4 1/4", OL. 32 5/8")

\$800-\$1200



182. UGLY "HAINT" SYSTEM STICK

Late 19th Century-A one piece folk carved character with two color glass eyes. When the cane is thrust forward a red tongue appears. Some minor inlay and a brass ferrule (OL. 37 3/8")

\$500-\$1000



183. BOAR'S TUSK

Late Victorian-Brass collar, one piece twig spur shaft and a bi-metal ferrule (H. 1 1/2" x 4", OL. 36 7/8")

\$300-\$500



184. CARVED BONE

20th Century-Two color glass eyes, bone and horn spacers, exotic hardwood shaft and a bone ferrule (H. 4" x 1 1/2", OL. 36 1/2")

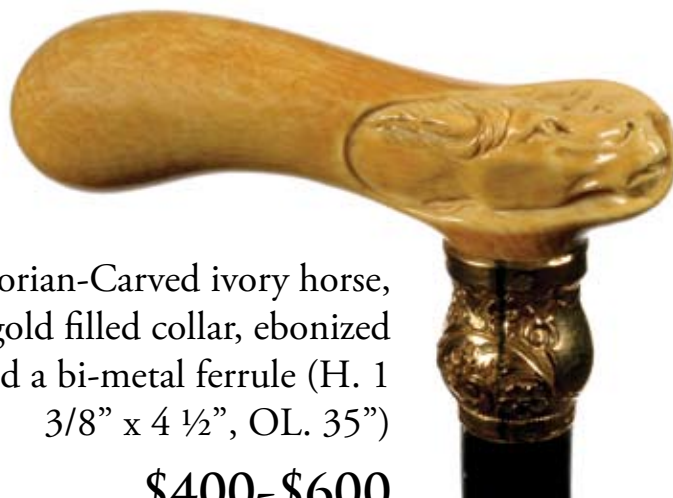
\$400-\$800



185. IVORY DRESS

Victorian-Carved ivory horse, ornate gold filled collar, ebonized shaft and a bi-metal ferrule (H. 1 3/8" x 4 1/2", OL. 35")

\$400-\$600



186. IVORY HOOF

Late Victorian-Ornate brass collar, ebonized shaft and a bi-metal ferrule (H. 1 1/2" x 3 3/4", OL. 32 5/8")

\$300-\$500



187. IVORY SNAKE

Mid 19th Century-Inlaid eyes, partial hexagonal hardwood shaft and 2" ivory ferrule (H. 3 3/4" x 1 5/8", OL. 32 1/2")

\$400-\$800



188. IVORY AND SILVER CLOWN

Late 19th Century-A well cast clown with an ivory hat and an ivory nose, rich snakewood shaft and a bi-metal ferrule (H. 2 ¼" x 2", OL. 36")

\$1000-\$1500



189. SILVER AND IVORY DRESS

Art Nouveau-Ornate silver end cap, reeded silver collar, exotic wood shaft and a bone ferrule (H. 1 ¼" x 5", OL. 36 ½")

\$300-\$500



190. IVORY DRESS

Late 19th Century-Large ivory handle, ivory collar, mahogany shaft and a bone ferrule (H. 5" x 1 ½", OL. 35 ¾")

\$300-\$500

191. IVORY DRESS

Late 19th Century-Large ivory handle, ivory collar, mahogany shaft and a bone ferrule (H. 5" x 1 ½", OL. 35 ¾")

\$300-\$500



192. CARVED QUARTZ FOREARM

Late 19th Century-A beautifully carved forearm and fist with a snake coiled around it, has a gold collar, probably French, ebony shaft and a worn ivory ferrule (H. 1 ½" x 3", OL. 31 5/8")

\$400-\$800



193. CARVED IVORY

Late Victorian-Ornate gold filled collar, malacca shaft and a horn ferrule (H. 3" x 3 3/8", OL. 3 3/8")

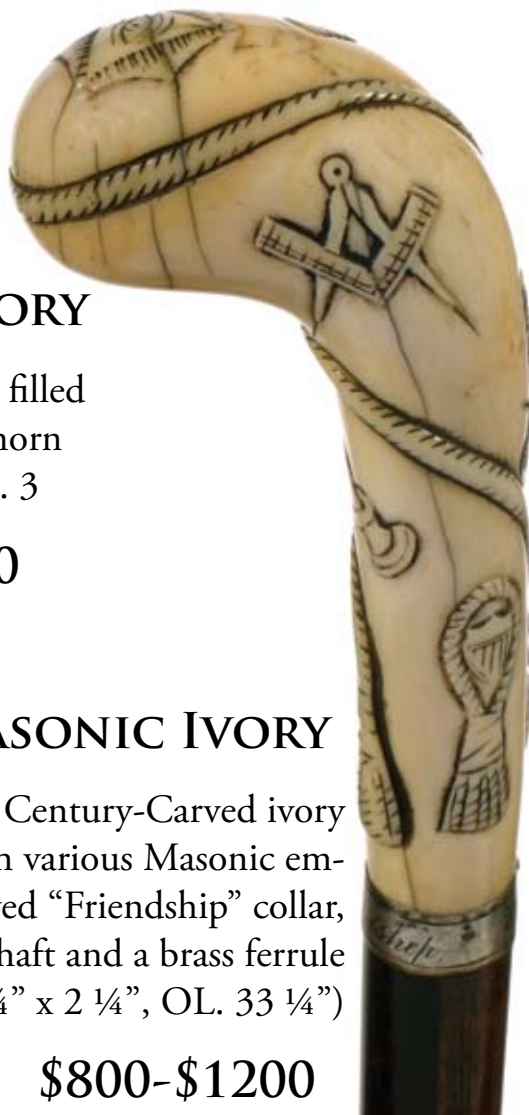
\$400-\$600



194. MASONIC IVORY

Mid 19th Century-Carved ivory handle with various Masonic emblems, engraved "Friendship" collar, exotic wood shaft and a brass ferrule (H. 4 ¼" x 2 ¼", OL. 33 ¼")

\$800-\$1200



195. JUDGE S. W. BELLS CANE

Dated Christmas 1928-Carved and twisted horn handle, ornate signed sterling presentation collar and a mahogany shaft. Judge Bell was a blind judge who founded the Home for the Blind in Cincinnati (H. 3 ½" x 4 ¾", OL. 35 ¼")

\$800-\$1200



196. ANGLO-INDIAN IVORY



Late 19th Century-Carved ivory dog with painted eyes, full inlaid ivory shaft and a copper ferrule (H. 1 ¼" x 1 ¾", OL. 35 ¼")

\$400-\$800

197. IVORY CRUTCH

Early 20th Century-Metal collar, ebonized shaft and a brass ferrule (H. 5 ½" x 4 5/8", OL. 36 ¾")



\$300-\$500

198. TOLEDO SWORD CANE

19th Century-A very ornate half engraved blade which is 27 ½" long, woven wire collar, locking mechanism, malacca shaft and no ferrule (H. 3" x 4 ½", OL. 35")

\$700-\$1200



199. IVORY AND GOLD DRESS

Mid to Late 19th Century-A fine carved ivory hand and baton with 18Kt gold collar, ebony shaft and a bi-metal ferrule (H. 1 ½" x 3", OL. 36")

\$800-\$1200



200. ASIAN STAG

Early 20th Century-A massive carved stag antler, metal collar, ebony shaft and bi-metal ferrule (H. 6 ¼" x 2 ½", OL. 35")

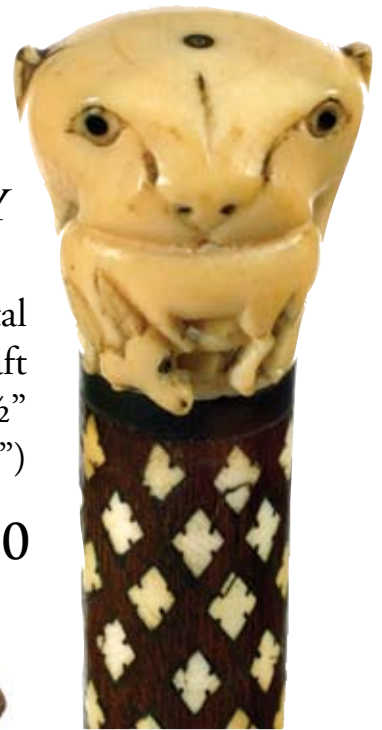
\$400-\$600



201. ANGLO-INDIAN IVORY

Late 19th Century-Metal collar, full inlaid ivory shaft and a metal ferrule (H. 1 ½" x 1 ½", OL. 37 ½")

\$400-\$800



202. CARVED ROOSTER

Early 20th Century-A carved and polychromed rooster with two-color glass eyes, ornate silver collar, oak shaft and a metal ferrule (H. 5" x 4 ½", OL. 46")

\$300-\$500



203. STANHOPE SYSTEM STICK

Early 20th Century-The Stanhope in the shaft is a presentation of the Lord's Prayer, done in calligraphy. It has a painted wood handle, mahogany shaft, and a metal ferrule (H. 1 ¼" x 5/8", OL 35")

\$400-\$600

204. FOLK-ART COLLECTION

Turn of the 20th Century-A group of four canes from various parts of the country. All are very nice primitive and folky carvings

\$300-\$600



205. FOLK-ART COLLECTION

Turn of the 20th Century-A group of four canes from various parts of the country. All are very nice primitive and folky carvings

\$300-\$600



206. FOLK-ART COLLECTION

Turn of the 20th Century-A group of four canes from various parts of the country. All are very nice primitive and folky carvings

\$300-\$600



207. WHALE IVORY DRESS

Mid 19th Century-Baleen spacers, ivory collar, exotic wood shaft and a bone ferrule. The handle has an inlaid wooden disc in the top (H. 3 1/2" x 1 1/2", OL 33 3/4")

\$500-\$1000

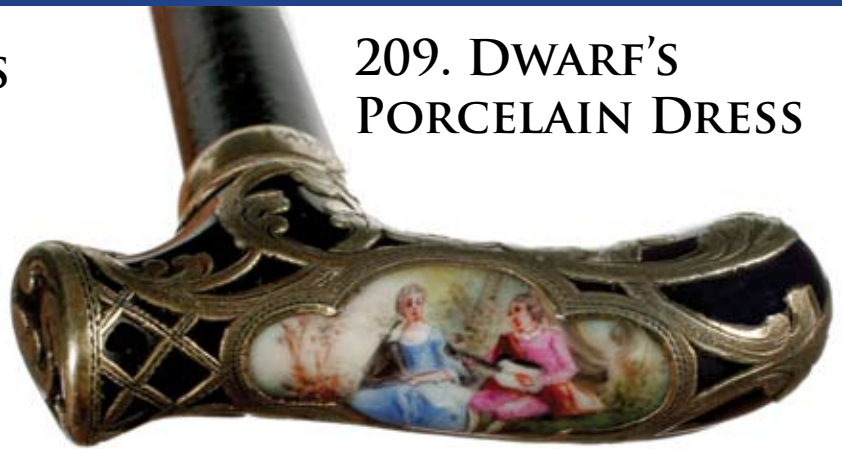
208. TIGER'S EYE DRESS

Early 20th Century-The agate is attached with silver mounts to a silver collar, rich snakewood shaft and a worn metal ferrule (H. 2 ¼" x 2 ¼", OL 35 ½")

\$600-\$900



209. DWARF'S PORCELAIN DRESS



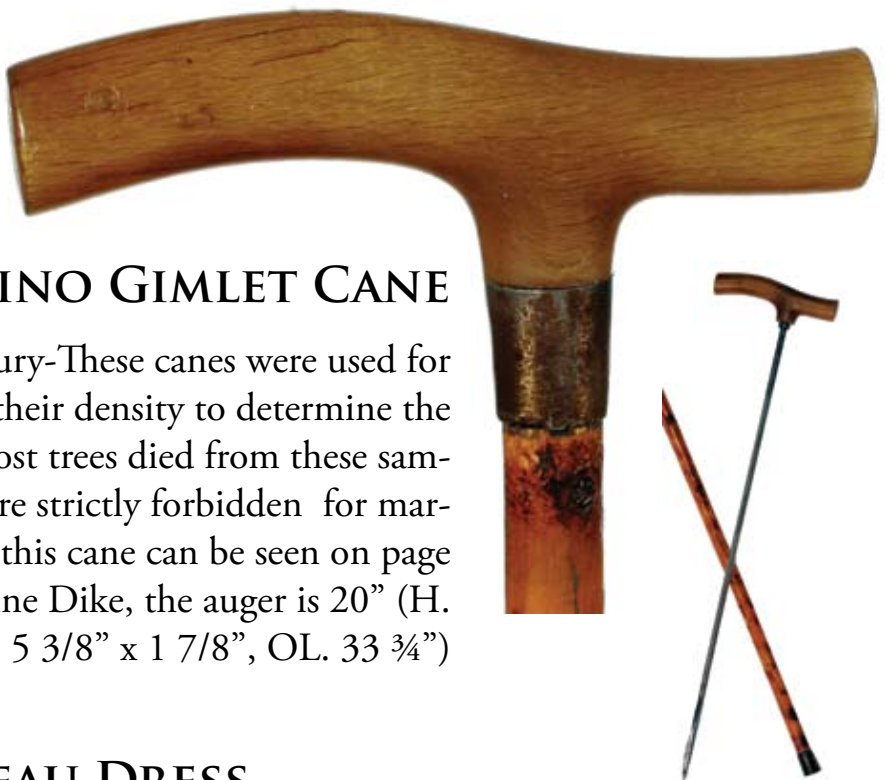
Victorian-Porcelain handle with ornate silver overlay and a hand painted woman and man playing the mandolin. Silver collar, ebony shaft and a worn ivory ferrule (H. 1 ¼" x 2 ¼", OL 25 ¾")

\$400-\$800

210. RHINO GIMLET CANE

Late 19th Century-These canes were used for probing trees to get a sample of their density to determine the price before cutting the tree. Most trees died from these samplings. The use of these sticks were strictly forbidden for marketing purposes. An example of this cane can be seen on page 250 in "Cane Curiosa" by Catherine Dike, the auger is 20" (H. 5 3/8" x 1 7/8", OL. 33 ¾")

\$800-\$1200



211. FRENCH NOUVEAU DRESS

Circa 1890-Ornate silver handle, bamboo shaft and a hammered ferrule which matches the background in the handle

\$300-\$500





212. PORCELAIN AND ENAMEL COLLECTION

Circa 1800-1900-This group of six canes show different examples of porcelain and enamel work. It is a very nice group and being offered as one collection.

\$2000-\$3000



213. FOLK-ART PAIR

Early 20th Century-Both are one-piece carved shafts, one is diamond willow with a carved snakes and the other is a whimsy

\$400-\$800



214. FOLK-ART DOG

Early 20th Century - A fully carved one-piece shaft with snakes, leaves and grapes. The dog has glass eyes and no ferrule (OL. 34 1/2")

\$400-\$600



215. FRENCH GOLD DRESS

Late 195h Century-A tested 14Kt or better handle, exotic wood shaft and a horn ferrule (H. 2 1/2" x 1", OL 33 3/4")

\$500-\$1000



216. CARVED IVORY

Late 18th Century-Coin silver collar, silver eyelets, malacca shaft and a 6" metal ferrule (H. 2 1/2" x 1 1/2", OL. 35 5/8")

\$500-\$1000



217. IVORY SKULL

Circa 1930-A carved ivory skull which has a moveable lower jaw with a frog upon his head, horn collar, exotic wood shaft and a metal ferrule (H. 2 1/4" x 1 7/8", OL. 25 1/2")

\$500-\$1000



218. HORN HOOF

Victorian-Handle is possibly rhino. It has a silver horseshoe attached to the hoof, an ebony shaft and a metal ferrule (H. 5 3/8" x 1 3/4", OL. 36 1/2")

\$400-\$600



219. CANE CURIOSO

A Mint Edition of "Cane Curioso" by Catherine Dike



\$300-\$500

220. OAK BARLEY TWIST

Late 19th Century-A finely carved example with eight sections on top and a matching eight sections in a copper base (H. 31 1/2" x L. 36 1/8" x W. 12 1/4")

221. PROVINCIAL CANE STAND

Late 19th Century-A well crafted iron cane stand with a copper. It is in original condition. (H. 31 1/2" L 30 7/8" W 11 3/8")

222. VICTORIAN CANE STAND

A fine period example of the Victorian Era. This stand is in original as found condition (H. 32" x L.30" x W. 16")

\$500-\$1000

\$500-\$1000

\$600-\$1200



220.



222.



221.



Kimball M. Sterling Auction Gallery
125 West Market Street Johnson City, Tennessee 37601
kimballsterling @ earthlink.net
423.928.1471

Member National Auctioneers Association

Photography by James Price
Catalog Design by KT Designs Inc. - www.kristaft.com