



KIMBALL & VICTORIA STERLING PRESENT THE

# THE HENRY MARDER ABSOLUTE ESTATE CANE AUCTION

SATURDAY, MAY 26TH • 11:00 A.M.





KIMBALL & VICTORIA STERLING PRESENT THE

# THE HENRY MARDER ABSOLUTE ESTATE CANE AUCTION

SATURDAY, MAY 26TH • 11:00 A.M.  
PREVIEW, 9:00 A.M.

[WWW.AUCTIONAUCTION.COM](http://WWW.AUCTIONAUCTION.COM)

Kimball M. Sterling  
Auction Gallery  
125 West Market Street  
Johnson City, Tennessee 37604  
kimballsterling @ earthlink.net  
423.928.1471

Live on the internet at  
[BIDSQUARE.COM](http://BIDSQUARE.COM)  
Two Time Winner of Best  
of Show from the National  
Auctioneers Association

# TERMS & CONDITIONS

1. Cash or check. A 20% buyers' premium will be added to the hammer price as part of the sale price for all bidders. Internet bidders will pay 23%. We reserved the right to hold purchases until the buyers checks clears if buyer is not known by us. Bank letter of credit is acceptable.

2. Mail or phone bids are accepted; the firm may require a deposit.

3. Kimball M. Sterling, Inc. has endeavored to catalog and describe the property correctly. All property is sold as is and neither the auction company nor the consignor will be responsible for descriptions, genuineness, provenance or condition of the property. No statement in the catalog made orally at the sale or otherwise shall be deemed to be a warranty, representation, or an assumption of liability. All the provenance is furnished by the consignor. Any litigation involved with this auction shall be held in Washington County, Tennessee, By registering for this auction you the bidder accepts all of the terms of this auction.

4. In the event of any dispute between bidders, the auctioneer shall have total discretion to determine the successful bidder, in which his determination shall be final or to re-offer and resale the article in dispute. Title of the item or items purchased by the bidder will pass at the fall of the gavel and declaration of bidder. This is not an approval auction. All measurements are approximate.

5. Principal auctioneer: Kimball M. Sterling #2467. B. Elizabeth Sterling, auctioneer # 5757. Firm Kimball M Sterling Inc. TFL-1915

6. Bidders may bid live on the Internet by visiting <http://www.auctionauction.com>. You may also view the auction at this site and bid by phone.

7. Communications:

Telephone 423-928-1471.

Fax 423-928-2816.

Cellular 423-773-4073, 423-773-4072.

Email [kimballsterling@earthlink.net](mailto:kimballsterling@earthlink.net)

8. We do not ship protected items overseas but anything else will be shipped by the UPS Store in Johnson City. We can however hold your item till you or a friend visit's the USA and you can take your items as a personal item or we can ship to a friend in the USA.

9. Kimball M. Sterling, Inc. will not be held responsible for bids received on the day of the auction, unexecuted absentee bids, phone bidders not contacted or slow Internet bids. Although we do attempt to get all bids executed problems do occur. There will be no recourse from the bidder. We will not be responsible for items left on our location for over 30 days.

10. Sale will be conducted at 125 West Market Street, Johnson City, Tennessee. 37604. Announcements day of the sale take precedence over pre-sale advertising. Any litigation that pertains to this auction will be conducted in the county of Washington in Tennessee and is agreed upon by registering for this auction.

11. Airport is the Tri-Cities Airport, which is approximately 20 miles from the gallery. Internet catalog and live bidding available at [www.auctionauction.com](http://www.auctionauction.com) Best Western Hotel: 423-282-2126. A very fine hotel which offers Sterling Auction a discount rate is the Carnegie Hotel 1216 W State of Franklin Rd, (423) 979-6400.

12. Please call for condition report on sale lots or email us. We do send out multiple photos by email of any lot in the auction. By registering for this auction you accept the terms.

13. Parking service is free.



**1. Whale Bone Cane**

Ca. 1865 – A well carved and cross-hatched whale bone handle, baleen spacer, 3/4" diameter shaft, never had a ferrule.  
H. 3 1/2" x 2 1/2", O.L. 38"  
\$800-\$1,200



**2. Turk's Knot Whale Bone Cane**

Ca. 1860 – A carved whale's tooth handle with a high relief Turk's Knot and also a carved woven collar, two baleen spacers, shaft is 3/4" and has cross hatching for the first ten inches then another woven collar and the rest of the cane is spiral carved, never had a ferrule.  
H. 1 1/2" x 3", O.L. 35 1/2"  
\$1,400-\$2,000



**3. Whale Bone Cane**

Ca. 1865 – A carved whale bone handle with a silver disc atop, five baleen spacers, 7/8" shaft which is half spiral carved and a brass ferrule.  
H. 1 1/2 x 2" O.L. 35 1/2"  
\$1,200-\$1,800



**4. Naughty Leg Whale Bone Cane**

Mid 19th C. – A carved whale's tooth leg which has scrimshaw work to designate the shoe, The nerve ending hole for the tooth is exposed, five baleen spacers, 1/2" shaft and no ferrule. Former judge Paul Vardeman.  
H. 2 1/4" x 1 1/2" O.L. 36"  
\$400-\$700



**5. Nautical Whale Bone Cane**

Ca. 1860 - Nice example with a whales tooth handle which end cap has been carved and scalloped, brown and black baleen spacers, hex carved for six inches then spiral carved for two feet., 7/8th " shaft and no ferrule.

H. 4 x 4", O.L. 34"  
\$1,500-\$2,500



**6. Whale's Tooth and Bone Cane**

Mid 19th C. - a carved whale's tooth handle and baleen spacers, 3/4" shaft which is reeded for 4 1/2" then spiral carved for 19", never had a ferrule.

H. 2 1/2" x 3" O.L. 36"  
\$1,000-\$1,500



**7. Architectural Whale Bone Cane**

Mid 19th C. - A complete whale bone cane with a carved spiral and cage effect, ribbed bone handle with three baleen discs atop, various diamonds and dots inlaid throughout the cage, diameter of the shaft above the cage is 1" and below 3/4", self-contained bone ferrule with a carved ring atop.

H. 1 1/2 - 3 3/4" O.L. 35"  
\$2,500-\$3,500



**8. Hand and Ball Nautical Cane**

Mid 19th C. - A very well carved whale's tooth handle which is attached to the handle with a baleen plug, two baleen spacers, upper collar has a few expected separations, shaft is 3/4" and it has a brass ferrule.

H. 1 1/2 " x 2" O.L. 35"  
\$800-\$1,200



**9. Serpent and Hand Nautical Cane**

Mid 19th C. – A very well carved whale's tooth handle, coconut wood spacer 3/4" whale bone shaft and no ferrule.

H. 1 1/2" x 2" O.L. 35"  
\$1,200-\$1,800



**10. Sailor Made Whale Bone Cane**

Mid 19th C. – A whale's tooth handle with a baleen spacer 7/8" hexagonal upper shaft, 20" spiral carved, and a 4 1/2" brass ferrule, (shaft has a sway to it)

H. 1 1/2" x 1" O.L. 34"  
\$500-\$600



**11. Eagle Whale Bone Cane**

Mid 19th C. – A carved whale's tooth eagle handle with shell eyes, silver collar, 5/8" whale bone shaft and a copper ferrule.

H. 3 1/3' x 3/4" O.L. 36"  
\$1,000-\$1,500



**12. Scrimshaw Whale Bone Cane**

Mid 19th C. – A carved whale bone Turk's Knot handle, a baleen spacer, eight triangles which have been colored 3/4" shaft with 8" of cross hatching – seven high relief rings – 17" of spiral carving and no ferrule.

H. 1 1/2" x 1 1/2", O.L. 34"  
\$800-\$1,200

**13. Scrimshaw Whale Bone Cane**

Mid 19th C. – Whale's tooth polygonal handle with 14 surfaces inlaid with exotic woods, silver half dime atop, a pair of baleen spacers 5/8" whale bone shaft which has mother of pearl and shell triangles and no ferrule. H. 1 1/4" x 1 3/4" O.L. 36" \$500-\$800



**14. Turk's Knot Nautical Cane**

Mid 19th C. A whale's tooth handle, small baleen spacer, 3/4" whale bone shaft which is hexagonal for 9", a very sturdy and straight up cane that never had a ferrule. H. 1 1/2" x 2 1/2" 36" O.L. \$1,200-\$1,600

**15. Fine Nautical Cane**

Mid 19th C. A delicate and unusual carving from a large whale's tooth of a piece of rope which is meticulously carved, nice open work throughout, baleen spacer, 3/4" whale bone shaft and never had a ferrule. H. 3 7/8" x 1 3/4", O.L. 38" \$2,500-\$3,500



**16. Important Nautical Sailor Folk Cane**

Ca. 1865 - A horn crook handle cane originally from the "Linda Beeman" collection and sold as lot #16 in the original Beeman sale in 1997, tropical wood shaft with various geometric inlays in mother of pearl- baleen whale bone and whale's teeth, decoration appears that it could have belonged to a gambler because of the types of inlays, a true folk masterpiece in the nautical genre, the condition is as one would expect with a few minor problems and it has a 2" horn ferrule. The crook handle has a 4" measurement for the hand placement.

O.L. 36"  
\$3,000-\$5,000



**17. Serpent Nautical Cane**

Mid 19th Century - A wonderfully carved whale's tooth serpent with baleen eyes and fangs, the first 11" of the cane is inlaid with baleen and mother of pearl, nice original patina, 3/4" whale bone shaft and a metal ferrule.

H. 1 1/2" x 5" O.L. 35 1/2"  
\$2,500-\$4,000





**18. Nautical Whimsy  
Whalebone Cane**

Mid 19th Century - A superb whale's tooth handle carved in the shape of a melon with one baleen spacer, the handle is hexagonal carved from the melon to the top of the shaft, there are a pair of 2 1/2" carved cages with a single ball each, 5 1/2" of cross-hatching, 5" of reeded columns and 9" of spiral carving, at the top of the cage the diameter of the shaft is 1" and it never had a ferrule. A superb carving.  
H. 1 3/4" x 4 1/2" O.L. 33 1/4"  
\$2,500-\$3,500



**19. Ornate Whalebone Cane**

Mid 19th Century - An ornately worked whale bone with a whale's tooth handle which is incised with concentric circles, this entire cane is inspired by Greek Corinthian ornamentations, this cane has one of the most beautiful patinas we have ever seen on a whale bone cane, 1" shaft has various fluted decoration with woven ivory nautical carved collars, spiral and rope carving throughout the entire shaft except for 4" and a 3" brass ferrule. Former Dr. John Viers Collection.  
H. 1 3/4" x 1" O.L. 35"  
\$2,000-\$3,000



**20. Captain's Wife Nautical Cane**

Mid 19th Century - Mr. Marder's original notes state that he had knowledge that this was a whale's tooth carving handle of a captain's wife's hand, a female clinched fist which has a tilt and a carved partial sleeve, abalone diamonds are inlaid completely around the sleeve, the upper whale bone shaft has four 2 1/2" abalone inlays, baleen spacer, a pair of coin silver eyelets and a horn ferrule, "Rafael Osona Folk Art Auction"  
H. 3 1/2" x 1 1/2" O.L. 37"  
\$3,000-\$4,000



**21. Scrimshaw Whalebone Cane**

Mid 19th Century - Whale's tooth handle carved in a double loop, horn-whale's tooth and wood spacers, 5/8" whale bone shaft and never had a ferrule, average striations throughout the handle. "ex Barbara Johnson Collection)  
H. 3 1/2" x 1 1/4" O.L. 34 1/4"  
\$1,000-\$1,500



**22. Nautical Hammer Whalebone Cane**

Mid 19th Century - A whale bone carved hammer handle, 4 baleen collar rings, a 5/8" whalebone shaft and never had a ferrule.  
H. 3 1/4" x 1" O.L. 37"  
\$500-\$700



**23. Baleen Fist Nautical Cane**

Mid 19th Century - An unusual clenched fist nautical cane where the baleen has been pressed together to form the fist, the  $\frac{3}{4}$ " whalebone shaft is fluted for the first  $2\frac{1}{2}$ ", the next 7" have cross-hatching and ribbing, and it never had a ferrule.

H.  $1\frac{3}{4}$ " x  $1\frac{7}{8}$ " O.L.  $30\frac{1}{4}$ "

\$3,000-\$4,000



**24. Whalebone Dress Cane**

Mid 19th Century - A small whale's tooth handle with a thin line of baleen inlay which has the appearance of maybe a barber pole, small silver collar,  $\frac{1}{2}$ " whalebone shaft and a brass ferrule.

H.  $1$ " x  $1\frac{1}{4}$ " O.L.  $32$ "

\$500-\$600



**25. Narwhal Staff**

Mid 19th Century - A very classical and important narwhal tooth handle with a beautiful rich patina and a pair of circles carved atop, this is probably a trophy cane of which the tooth handle came from the same whale as the shaft, the 1 1/2" shaft has beautiful spiraling and a nice rich patina with a copper ferrule. This is one of the finest examples that we have ever offered at auction.

H. 2 1/2" x 4" O.L. 40"  
\$5,000-\$7,000



**26. Narwhal Nautical Cane**

Mid 19th Century - A beautiful example with a coin silver pommel handle, 1 1/2" tusk with original patina and in fine condition with a brass ferrule.

H. 1 3/4" x 1 1/4" O.L. 38"  
\$3,000-\$4,000





**27. Important Whale's Tooth Fist Cane**

Mid 19th Century - A very large and well executed whale's tooth carving of a fist with collared sleeve, inlaid baleen dots throughout the sleeve, fluted baleen and whalebone collar, exotic wood shaft and a metal ferrule.

H. 5" x 2 1/2" O.L. 36"  
\$3,000-\$4,000



**29. A Clinched Fist Nautical Cane**

Mid 19th Century - A whale's tooth carved fist protruding from a polka-dot decorated sleeve which has been skillfully carved, there are baleen and shell collars and whale bone spacers, exotic wood shaft and no ferrule.

H. 1 1/2" x 2 1/2" O.L. 33 1/2"  
\$1,500-\$2,500

**28. Whale's Tooth Nautical Cane**

Mid 19th Century - A carved whale's tooth with a silver love token atop which is attached to the shaft with baleen, pair of coin silver diamond shaped eyelets, baleen spacer, tropical wood shaft and a bone ferrule.

H. 1 1/2" x 2 1/2" O.L. 35"  
\$400-\$600



**30. Whalebone Fist Cane**

Mid 19th Century - A carved whale bone fist holding a baton in fine condition, ribbed whale bone upper collar, hardwood exotic shaft and a brass ferrule.

H. 1 3/4" x 4" O.L. 36"  
\$500-\$800



**31. Whale's Tooth Fist Cane**

Ca. 1840 - A clinched fist carved from a whale's tooth which has an open space under the knuckles probably for a lanyard to be tied, original patina, half hexagonal palm wood shaft and a small brass ferrule. This is a nice early folksy nautical cane.

H. 2 1/2" x 1 3/4" O.L. 33 3/4"  
\$1,200-\$1,800



**33. Bamboo Sword Cane**

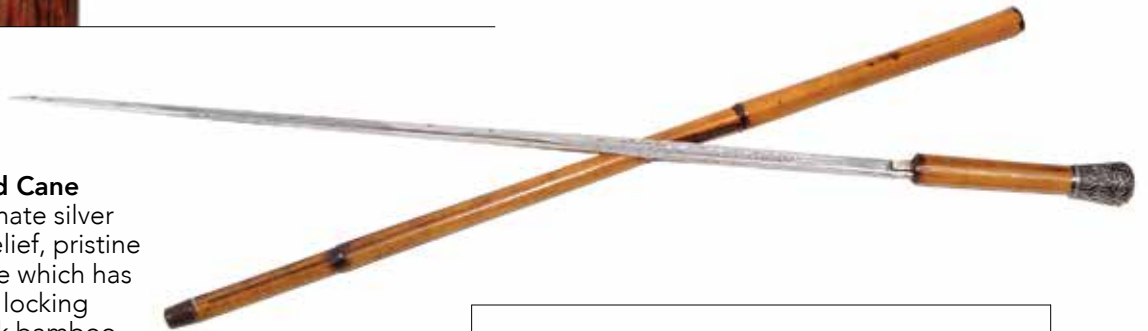
Ca. 1875 - A worn silver handle, one lanyard eyelet, the other is missing, 26" push and pull locking mechanism and a brass ferrule.

H. 1" x 1" O.L. 35"  
\$400-\$600

**32. Silver Sword Cane**

Ca. 1860 - An ornate silver handle in high relief, pristine 29" etched blade which has a push and twist locking mechanism, thick bamboo shaft and a brass ferrule.

H. 1 1/2" x 2" O.L. 36"  
\$1,000-\$1,200



**34. Toledo Spring Hilt Sword Cane**

Ca. 1880 - A working spring hilt example with an ornate silver handle, a 27" acid etched "Toledo" blade which locks firmly into the shaft, hallmarked silver collar, dark honey malacca shaft and an original brass ferrule.

H. 1 3/8" x 2" O.L. 36"  
\$2,000-\$3,000





**35. Sword Cane**

Ca. 1900 - Silver metal handle signed "France" four-sided 19" blade, working push and pull mechanism, split bamboo shaft and a copper ferrule.

H. 1" x 1 1/2" O.L. 35 1/2"  
\$400-\$600

**36. Buffalo Horn Sword Cane**

Ca. 1850 - A pistol grip buffalo horn handle with some worm bites which add to the character of the cane, a twist and lock 26 1/4" triangular blade with an unusual brass attachment, small coin silver collar and a pair of silver eyelets, thick malacca shaft and a 2 1/2" iron ferrule.

H. 4 1/2" x 2 1/2" O.L. 36 1/2"  
\$1,000-\$1,200



**37. Court Sword Cane**

Ca. 1800 - A very early example with a coin silver top and a pair of coin silver eyelets, the 27" triangular gold gilded blade is in nice condition and it has a coin silver collar with a push and pull locking mechanism, thick malacca shaft and a 4" brass ferrule.

O.L. 34 1/2"  
\$1,000-\$1,200



**38. Toledo Sword Cane**

Ca. 1885 - A bamboo root sword cane with a 13" signed Toledo blued and gilded four-sided blade with a push and pull mechanism, split bamboo shaft and a copper ferrule.

H. 1 1/4" x 5 1/2" O.L. 35"  
\$500-\$700





**39. Nautical Sword Cane**

Ca. 1800 - A whale's tooth carved handle with a large abalone disc atop, silver collar and a pair of silver eyelets, a push and pull 30" four sided engraved blade with unreadable French markings, massive malacca shaft and a 3 1/2" brass ferrule.

H. 1 1/4" x 2 1/2" O.L. 39"

\$1,000-\$1,400



**41. Horn Sword Cane**

Ca. 1880 - A horn handle with a brass collar and a push button mechanism which holds a 13" four-sided blade with some acid etching still appearing, bamboo shaft and a horn ferrule.

H. 2" x 4" O.L. 34 1/2"

\$400-\$600



**40. Court Sword Cane**

Ca. 1780 - Small brass handle atop a one-step malacca shaft with brass and silver fittings, push button working mechanism with a 26" blade which has a good blood groove, 5 1/2" brass ferrule.

O.L. 40"

\$1,500-\$2,500



**42. Toledo Sword Cane**

Ca. 1900 - A bamboo root handle, signed Toledo 23" blade with a push and pull mechanism, nice bamboo shaft and a metal ferrule.

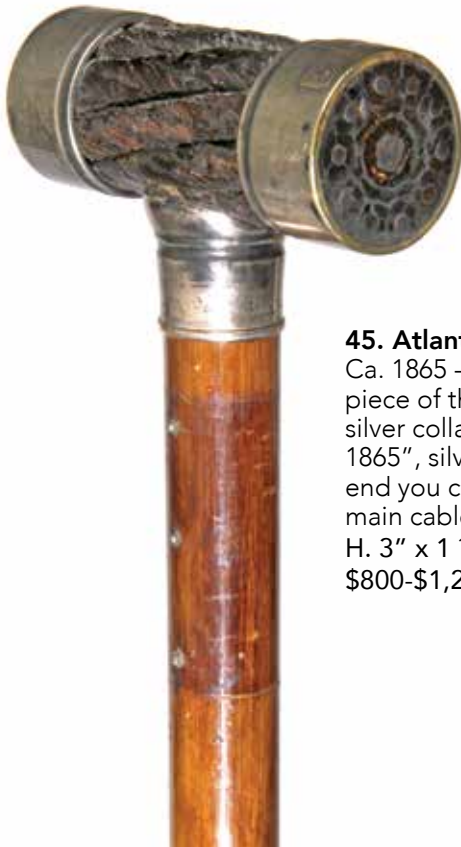
O.L. 36"

\$500-\$600



**43. Early Sword Cane**

Ca. 1800 - A wood pommel handle and a pair of carved eyelets, hand forged 30" blade which is unsigned, push and pull mechanism, coin silver collar, thick malacca shaft and a 4 1/2" iron ferrule.  
H. 1 1/2" x 5 1/2" O.L. 40"  
\$600-\$900

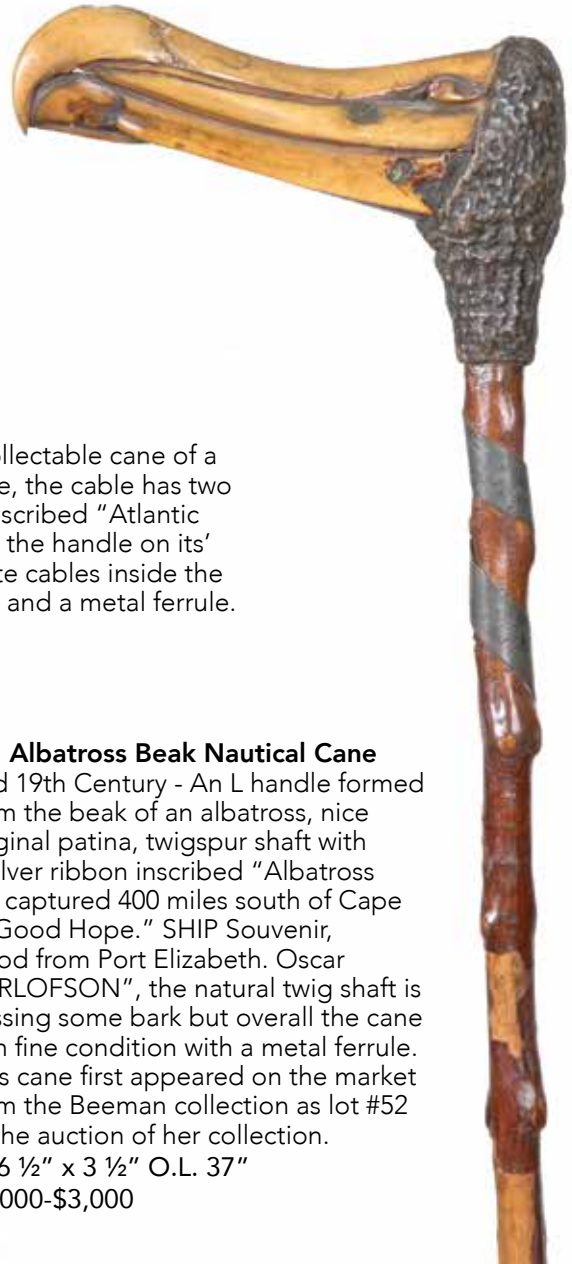


**45. Atlantic Cable Cane**

Ca. 1865 - A nice American collectable cane of a piece of the transatlantic cable, the cable has two silver collars of which one is inscribed "Atlantic 1865", silver collar, by viewing the handle on its' end you can see eight separate cables inside the main cable, exotic wood shaft and a metal ferrule.  
H. 3" x 1 1/4" O.L. 33"  
\$800-\$1,200

**44. Albatross Beak Nautical Cane**

Mid 19th Century - An L handle formed from the beak of an albatross, nice original patina, twigsur shaft with a silver ribbon inscribed "Albatross Bill captured 400 miles south of Cape of Good Hope." SHIP Souvenir, wood from Port Elizabeth. Oscar HERLOFSON", the natural twig shaft is missing some bark but overall the cane is in fine condition with a metal ferrule. This cane first appeared on the market from the Beeman collection as lot #52 at the auction of her collection.  
H. 6 1/2" x 3 1/2" O.L. 37"  
\$2,000-\$3,000



**46. Tippler's Stick**

Ca. 1900 - A better example with a silver screw on handle, a thick malacca shaft which holds a 17" glass vile and a horn ferrule.  
H. 1 3/8" x 2" O.L. 36"  
\$350-\$450





**47. Spitting/Cologne Cane**

Late 19th Century - A working example of a Britannia head of a comical character which has a small hole in its' mouth, there is a button on the rear of the thick malacca shaft when pressed water or a cologne will come from his mouth, this cane is also heavy enough in the handle to be a defensive cane, nice condition and a nice worn brass ferrule.

H. 3" x 1 3/4" O.L. 36"  
\$800-\$1,200

**48. Buggy Whip Cane**

Late 19th Century - A patented cane whip from Springfield, Ohio in original condition which is also a container cane that holds the second half of the whip which makes a 6 foot tool, the tip of the whip still has about 4" of leather which is usually missing, metal handle and leather covered shaft and a small metal ferrule.

O.L. 36" (72" total)  
\$600-\$900



**49. English Saw Cane**

Ca. 1900 - A signed English saw cane with brass attachments, 29" locking blade, twigspur shaft and a metal ferrule.  
O.L. 37"  
\$500-\$600



**50. Horse Measurer Cane**

Ca. 1910 - A bamboo horse measure cane with working level, square wood measure with "Pat. APP'D for"  
O.L. 36"  
\$300-\$450





**51. Picnic Cane**

Ca. 1880 - A natural twigspur handle with a push button locking mechanism which houses a 9" knife and fork, brass plates on the inside of the handles original painted twigspur shaft and a brass ferrule.

H. 6" x 1 1/4" O.L. 38"

\$500-\$800

**52. Fishing Pole Cane**

Late 19th Century - A stout bamboo fishing rod system cane of which the handle unscrews to produce a 4 lb. scale which is stamped "Sacter", a 3 1/2" brass ferrule unscrews to produce a telescoping and locking brass fishing pole with push button stops to make the rod stationary, extended size in 72", thick bamboo shaft and in excellent condition.

H. 7" x 6" O.L. 37"

\$700-\$1,000



**53. Architect's Cane**

Ca. 1880 - A French solid brass architect's cane with a horn handle, the shaft is divided into six sections, each section is threaded and joined by couplers, items stored in the shaft are a plumb bob, a folding ruler, marking chalk a compass, hand blown level, etc., the ferrule extends 16", there is a label on the level which reads "Canne de Architecte F. Dorringer Paris Berlin", Provenance- M.S. Rau New Orleans 1999.

H. 3 1/2" x 2" O.L. 36"

\$2,500-\$3,500



**54. Affluent Chinese Cloisonné Picnic Cane**

Ca. 1890 - A massive silver metal handle with high relief houses, trees and people, cloisonné utensil holder with 11" knife which is signed with Asian characters, exotic wood handles and bone attachments, also a pair of bone chopsticks are fitted to the cloisonné five color case which is brass mounted, a fine thick malacca shaft and a horn ferrule.  
H. 8 1/2" x 2" O.L. 36"  
\$2,000-\$3,000

**55. Torch Lamp Cane**

Ca. 1860 - Nice original patina on a twigspur sapling shaft and handle, the handle is held to the shaft by friction, when pulled a torch with a wick is exposed, a brass fuel reservoir is within the shaft and it has an iron ferrule.  
H. 1 3/4" x 3 1/2" O.L. 35"  
\$300-\$400



**56. Suitcase Cane**

Ca. 1920- A signed sterling handle, maple three piece shaft which can be unscrewed to make a 12" bundle for easy traveling, maple shaft and a horn ferrule.  
H. 2" x 1 1/4" O.L. 35"  
\$300-\$400



**57. Umbrella System Cane**

Ca. 1930 - A telescoping hardwood umbrella cane with a horn ferrule. Simulated malacca shaft, fine condition.  
O.L. 36"  
\$200-\$300



**58. Tippler's Stick**

Ca. 1900 - A nice and firm tippler's stick with two compartments, the first holding a 2" stem goblet and the second a 16" glass tube with stopper, most of these canes, are not firm and stout but this one is, copper handle, exotic wood shaft and a metal ferrule.  
H. 1 1/2" x 1" O.L. 36"  
\$300-\$400



**59. Sergeant Major's Pace Stick**

Ca. 1900 - A nice example of a device that was used to measure the length of a soldier's pace by his commanding officer, oak shaft, locking brass mechanism to keep the shaft in one piece until needed and a large brass ferrule.  
O.L. 35"  
\$350-\$500



**60. Gold Quartz**

Late 19th Century - A high gold content gold quartz dress cane, a hexagonal gold handle with eight panels of which four have nice Florentine engraving which has a hexagonal gold quartz disc atop, handle is marked 14k, very rich exotic wood shaft and a horn ferrule. Provenance Rick Berkoff.  
H. 1 1/4" x 2 1/4" O.L. 36"  
\$4,000-\$5,000



**61. Cobalt Enamel Dress Cane**

Late 19th Century - A superb and perfect example of an enamel handle with approximately 50 seed pearls atop, the handle is cased in the original hard velvet protector with what appears to be gold leaf Russian letters, a hexagonal hardwood fruitwood shaft and a metal ferrule. Provenance Rick Berkoff Collection. H. 2 ¼" x 1" O.L. 36" \$1,500-\$2,500



**62. Moonstone/Crystal Dress Cane**

Ca. 1900 - A French frosted rock crystal handle with three faceted grooves, moonstone cabochon with tiny rose cut diamonds, set atop, silver collar, ebony shaft and a horn ferrule. H. 1" x 3" O.L. 37" \$800-\$1,200



**63. French Gold Dress Cane**

Hallmarks for Calais 1768-1715 - Yellow gold knob handle with detailed various engravings, gold eyelets with original sash, beautiful thick malacca shaft and a 5" bronze ferrule. Provenance-according to Mr. Marder's notes John Monek stated that this was one of his father's favorite canes. (There are some small dings in the handle but they are not annoying.) H. 1" x 1 ½" O.L. 36" \$1,000-\$1,400





**64. Amethyst and Silver Dress Cane**

Ca. Last half of 19th Century - A beautiful silver handle, probably Italian with nine rows of alternating rounded and faceted matching amethyst, over 50 stones are set on the sides of the signed sterling handle, atop the handle are over 30 stones, a very imposing artist made dress handle, honey malacca shaft and a horn ferrule. (This cane will really shine when polished.)

H. 1 ½" x 3 ¼" O.L. 36"

\$1,000-\$2,000



**66. Shell Eagle Cane**

Late 19th Century - Described as "a blonde tortoise eagle cane" in Mr. Marder's notes, two color glass eyes with finely carved facial features and feathering, hallmarked gold collar, ebonized shaft and a horn ferrule.

H. 2 ½" x 5" O.L. 36"

\$1,500-\$2,000

**65. Amethyst Dress Cane**

Ca. 1890- A decorative amethyst handle with rock crystal faceted rings, ebony shaft and a brass ferrule.

H. 2 ½" x 1" O.L. 34 ½"

\$400-\$600





**67. Rose Quartz Dress Cane**

Ca. 1900 - A beautiful rose quartz crystal with an ornate vermeil collar, rosewood shaft and a horn ferrule.  
H. 3/4" x 2" O.L. 37"  
\$350-\$450



**68. Rock Crystal Dress Cane**

Ca. 1900 - The rock crystal is etched with frosted flowers of what they appear to be is chrysanthemums and mums, an unusual 1/2" smoky blue opal is set atop, silver collar, ebonized shaft and a horn ferrule. Most likely French.  
H. 1 1/2" x 1 1/2" O.L. 36 1/2"  
\$1,000-\$1,200



**70. Snake Dress Cane**

Ca. 1890 - A silver metal handle with a gold overlaid snake with ruby eyes and a ruby inlaid at the top of the head, there is a small unreadable hallmark on the snake's tale, gold collar, ebony shaft and a horn ferrule.  
H. 7/8" x 2 1/4" O.L. 36"  
\$700-\$1,000



**69. Lapis Dress Cane**

Ca. 1890 - The lapis handle is deep blue and is overlaid on one side with berries and foliage, silver collar, black enamel shaft and a horn ferrule.  
H. 1" x 2 1/2" O.L. 36"  
\$700-\$1,000



**71. Nephrite Dress Cane**

Ca. 1880- A deep spinach green Nephrite knob handle which has been enhanced by an engine turned gilt collar, a very simple and elegant presentation, malacca shaft and a horn ferrule.

H. 1 ½" x 4 ½" O.L. 34 ½"

\$800-\$1,200



**72. Hardstone Dress Cane**

Ca. 1900 - A grayish brown agate handle, silver collar with high relief stars, snakewood shaft and a horn ferrule.

H. 2 ¼" x 7/8" O.L. 38"

\$400-\$600

**73. Russian Enamel Dress Cane**

Pre 1900 - A beautiful Russian silver and enamel handle with a very intricate design probably St. Petersburg, ebonized hardwood shaft and a horn ferrule.

H. 1 ¼" x 1 ½" O.L. 35 ½"

\$500-\$1,000



**74. Lapis Dress Cane**

Ca. 1880 - 1 ¼" lapis stone is inlaid atop an ornate gilt mounting, probably Vienna but the hallmarks are unreadable, snakewood shaft and a horn ferrule.

H. 1 ½" x 1 ¾" O.L. 37"

\$500-\$600





**75. English Gilt Dress Cane**  
Early 19th Century - A high fired gilt knob in fine condition with much high relief, gilt lanyard attachment, honey malacca shaft and a brass ferrule.  
H. 1 1/2" x 2 1/2" O.L. 35 1/2"  
\$500-\$800



**76. Gold Dress Cane**  
Ca. 1740 - An early gold English dress cane, London hallmarks for 1739 and stamped "A.H.", the thin malacca shaft also has a matching gold swinging lanyard holder and a 4" original brass ferrule.  
H. 1 1/8" x 3/4" O.L. 39 1/3"  
\$500-\$900



**77. Shell Dress Cane**  
Ca. 1860 - A karat gold handle which is ribbed atop and a small Florentine collar near the bottom on the handle, pair of gold lanyard eyelets, the shell shaft is in very fine shape and it has a 2" metal ferrule.  
H. 1 1/8" x 1 1/4" O.L. 34 7/8"  
\$1,400-\$2,000



**78. Fluted Shell Dress Cane**  
Ca. 1860 - A karat gold fluted handle which matches the shell fluting on the entire shaft, shell is all there in good condition but has a few separations, (it would be what you expect in a cane of this age and quality,) brass ferrule.  
H. 7/8" x 1 1/4" O.L. 35"  
(Handle has a few dings but not annoying)  
\$1,400-\$2,000



**79. Nautical Macramé Cane**

Ca. 1880 - A sailor made woven and tied rope cane over a crook handle malacca, exceptional detail paid to different types of nautical knots and weavings and a brass ferrule.

O.L. 36"  
\$400-\$600



**80. Nautical Macramé Cane**

Ca. 1880 - A fully tied and knotted seaman's cane in fine condition with various collars and woven sections, entire cane has an early shellac and a metal ferrule.

O.L. 36"  
\$400-\$600



**81. Nautical Macramé Cane**

Ca. 1880 - A macramé fancywork nautical cane in fine condition with its' original finish and a metal ferrule.

O.L. 34"  
\$400-\$600



**83. Dual Purpose Macramé Cane**

Ca. 1850 - A fancywork macramé sailor's cane which has been varnished, four woven collars with various weavings on the five sections, no ferrule.

O.L. 36"  
\$300-\$500

**82. Dual Purpose Macramé Cane**

Ca. 1880- Dual purpose that doubles as a defensive cane finely woven throughout with various collars and chains, fine condition with a metal ferrule.

O.L. 36"  
\$400-\$600





**84. Push-up Candle Cane**

Late 19th Century- A German nickel plated brass handle which contains a compartment for matches and a push-up candle, "Norddeutscher Lloyd, Bermen" and a decorated anchor are in high relief on the top of the handle, a patent for a candle and match cane was awarded in 1887, all in working condition with good springs and push up, ebonized shaft and a metal ferrule.

H. 1 ¼" x 4" O.L. 34"

\$700-\$900



**85. Sterling Elephant Cane**

Early 20th Century - A fine cast sterling elephant with two color glass eyes, in perfect condition, ebony shaft and a horn ferrule.

H. 4 ¾" x 4 ½" O.L. 36"

\$500-\$1,000



**86. Asian Picnic Cane**

Ca. 1890 - A high relief silver metal handle with various trees, houses and people which unscrews from the shaft to produce a picnic set of a 10" knife and two bone chopsticks, the case for the utensils seems to be some type of shell or animal skin, the case also has ornate brass attachments.

H. 1 ¾" x 2" O.L. 35 ½"

\$1,200-\$1,800



**87. Cormorant Silver Glove Holder Cane**

Ca. 1890 - An art nouveau cormorant bird which is signed 800 silver and has a pair of color glass eyes, the lower beak opens when a button is pushed at the rear of the head, commonly used as glove holders in the late 19th century, very fine condition and an unusual subject matter to find, hardwood shaft and a metal ferrule. "B G N 800"

H. 4 1/2" x 2 1/2" O.L. 34 1/2"  
\$1,500-\$2,000



**88. Erotic Dress Cane**

Ca. 1890 - A signed sterling handle of a nude lady holding her breast with flowing hair, small silver collar, faux bamboo partridgewood shaft and a metal ferrule.

H. 1 3/4" x 2" O.L. 36"  
\$500-\$600

**90. Watch Cane**

Ca. 1900 - A working watch cane which is probably a Houlska movement which was sold by Howell of London, the cane retains the original Howell cartouche and the mechanism works exactly as the rare Houlska, nice silver handle with British hallmarks, faux bamboo partridgewood shaft with attached silver initials and a brass ferrule.

H. 4" x 1" O.L. 33 1/2"  
\$1,200-\$1,800



**89. Spitting Chinaman Cane**

Late 19th Century - A nice example of the genre of system canes, working condition is unknown at the printing time of catalogue, reservoir is within the cane and by pulling the ponytail water comes out of the Chinaman's mouth, hallmarked but unreadable silver collar, thick bamboo shaft and a brass ferrule.

H. 1 1/2" x 1 1/2" O.L. 36"  
\$600-\$1,000





**91. Telescope Cane**

Ca. 1885 - A quality telescope cane with an ornate silver handle which unscrews from the ebonized shaft to produce a 13 1/2" brass one draw mahogany telescope, telescope is 13 1/2", this cane was lot #31 in the auction catalog of the Monek family dispersal sale in 1998 in Chicago, fine working condition with a metal ferrule.

H. 2 1/2" x 1 1/2" O.L. 31"  
\$600-\$1,200



**92. Touter's Cane**

Ca. 1900 - A Swain and Brigg system cane which has a 3 1/2" removable pencil, large British hallmarked silver collar, thick malacca shaft and a horn ferrule.

O.L. 36"  
\$350-\$450

**93. La Terrible Defensive Cane**

Ca. 1890 - This rare French cane is one of the most sinister defensive canes known, it is one of the three defensive canes which were invented during the French uprisings, another name well known for this cane is the "slashing" cane, silver knob handle with high relief Florentine work near the base, by drawing the handle six sharp razor blades extend from the paint decorated bamboo shaft, fine working condition and it has an iron ferrule.

H. 1 1/2" x 1 1/2" O.L. 35"  
\$3,000-\$3,500



**94. Ear Trumpet Cane**

Early 20th Century - An unusual hearing aid system cane with a horn handle, ornate silver collar which is inscribed "presented to Mr. P. Bailey by his friends Mr. & Mrs. Beech Dec. 25, 1921", (this must have been a great Christmas present for Mr. Bailey), It has 1 1/2" silver collar which matches floral motif on the main collar, it also matches the motif of the silver mounted horn, the horn swivels on a brass collar so the ear piece may be placed in the ear canal, ebonized shaft and a metal ferrule.

Horn is 8 1/2" x 2 1/2" H. 4" x 3"  
O.L. 37"  
\$1,000-\$1,500





**95. Android Barometer System Cane**

Ca. 1890- A compensating barometer cane making it possible to set the instrument at any given altitude to determined weather as well as altitude above sea level, the handle is silver plated brass, appears to be in working condition, an American chestnut shaft, hand blown crystal and a metal ferrule.

H. 1 3/4" x 1 1/4" O.L. 35"  
\$800-\$1,200



**96. Ornate Silver Watch Cane**

Ca. 1880 - A Swiss made pocket watch cane with a very ornate silver chased handle which has a hinged and locking lid, the watch is working and removable from the handle, it has a concave thick magnifying lens so the watch can be read easily, the watch has a porcelain dial and a drop key winding stem in the rear, nice malacca shaft and a brass ferrule.

Provenance Phillip Hampton Collection.  
H. 1 1/2" x 2" O.L. 36"  
\$1,000-\$1,400

**97. Potter Silver Dress Cane**

Ca. 1770 - An impressive example of an early English silver dress cane with a 1" long line of British hallmarks of which most are unreadable, atop the silver handle is a wheel which could possibly be a sign of a gild the original owner belonged to, a pair of silver eyelets which still hosts the silver wire huge tassel, nice malacca shaft and a 6 1/2" silver metal ferrule which is signed "Potter London"

H. 4" x 1 1/2" O.L. 41"  
\$800-\$1,200



**98. French Dress Cane**

Ca. 1750 - A silver knob which is slightly fluted and has a flat top which has been hand chased on alternating panels, a pair of silver eyelets, the silver handle its' expected dents and dings for a cane of this age, malacca shaft and a 3 1/2" metal ferrule.

H. 1 1/4" x 1 1/2" O.L. 41 1/2"  
\$500-\$800







**100. Boar's Tusk/Snake Cane**

20th Century - A beautiful design of a perfect boar's tusk with a sterling mount of a snake coiled up ready to strike, ornate skull collar, rich snakewood shaft and a bone ferrule. (This cane was made in the shop of Charles Daugherty.)

H. 5" x 4 1/2" O.L. 37 1/2"

\$700-\$1,000



**101. Articulated Swan Dress Cane**

Ca. 1880 - A French articulated silver gilt handle hand chased in the shape of a swan's head with a long neck, there are a pair of red glass eyes which are probably precious stones, there is a white gold band with rose cut diamonds that covers the concealed hinge that lets the head rotate, the handle has a very "life-like" motion, ebony shaft and a silver metal ferrule.

H. 3 1/2" x 2 1/2" O.L. 37 1/4"

\$1,200-\$1,500



**99. Silver Dress Cane**

Ca. 1750 - An ornate silver handle which has two hallmarks one is unreadable and the other is the number 13, it also has the initials "IPG" probably for the first owner, atop the cane is extensive Florentine high relief work with a silver ball in the center, the side of the cane is draped with garland and a matching floral band, a pair of silver eyelets, honey malacca shaft and a bronze 6 1/2" ferrule with an iron ice grip tip. (Ice grips are very rare to find still intact and this iron tip is a four prong grip.)

H. 1 1/2" x 2 1/4" O.L. 42 1/2"

\$1,200-\$1,800



**102. Micro-Mosaic Dress Cane**

Ca. 1900 - A decorative handle of oxidized and gilded metal with a beautifully rendered a pink rose surrounded by acanthus leaves done in mosaic glass fragments, expert micro-mosaic work throughout, all the glass fragments have vibrant color, there is a gilt band that circles the handle, gold metal collar, ebony shaft and a horn ferrule.  
H. 1 3/4" x 1 1/2" O.L. 36"  
\$800-\$1,200



**103. Swiss Watch Cane**

Ca. 1888 - The watch cane has two glass lids to protect the face of the watch, the watch is marked "Brevette", the watch is working at this moment and is wound by turning the top of the case, the hands are set by using a button on the watch itself, silver metal on copper handle, ebony shaft, watch is removable for pocket use and a horn ferrule.  
H. 1 1/2" x 1 3/4" O.L. 36"  
\$900-\$1,500



**104. Albatross Nautical Cane**

Ca. 1870 - A scarce marine cane fashioned with a hinged silver mounted bill, this cane was probably used as a glove holder or used to hold something else because the beak can open as much as 5" and spring back to the lower, exotic wood spool collar with a pair of carved wooden shark vertebrae, balance of the shaft are 1 1/2" shark vertebrae that ends at a silver metal ferrule.  
H. 6" x 2 1/2" O.L. 36"  
\$1,500-\$2,500



**105. Erotic Defensive Cane**

Ca. 1920 - A bronze gold plated handle of a full front nude with her legs chained, matching collar ebonized shaft and a stag horn ferrule.

H. 2 1/2" x 2 1/2" O.L. 33 1/2"

(Provenance M.S. Rau)

\$500-\$700



**106. Harmonica Cane**

Late 19th Century - A fine working example with a silver metal collar and wood knob handle. Exotic hardwood shaft and a brass ferrule.

Harmonica is 3 1/2", O.L. 39"

\$700-\$1,000



**107. Thieves Cane**

Ca. 1880 - Large horn handle with a brass cylinder which when depressed produces a grabber from inside the ferrule, don't know why but these are commonly referred to as "thief canes" a very similar piece is shown on page 224 of "Cane Curiosa by Catherine Dike", legend has it that the small grapple that extends from the ferrule were used to grab handbags from women on trains and public places, 1" silver collar, massive malacca shaft and a 3 1/2" brass ferrule. (Provenance Michael German Antiques)

H. 4" x 3" O.L. 38"

\$800-\$1,200



**108. Shaving Kit System Cane**

Late 19th Century - A British "Drew & Son" coin silver compartment cane which houses a horse hair shaving brush and straight razor, thick malacca shaft and a brass ferrule.

H. 3 1/2" x 1 1/2" O.L. 35 1/2"

\$800-\$1,200



**109. Silver Dress Cane**  
Ca. 1920 - A signed German silver art deco crook handle, ebonized shaft and a horn ferrule.  
H. 5" x 5" O.L. 36"  
\$300-\$500



**110. Flange Defensive Cane**  
Ca. 1880 - A nice original flange or "billy club" cane with a carved horn handle, silver collars, 12" rubber, metal and brass flange bamboo shaft and a metal ferrule.  
H. 5" x 2" O.L. 36"  
\$600-\$1,000



**111. Flange Defensive Cane**  
Ca. 1920 - When the hardwood handle is removed from the shaft a 13" heavy spring flange is produced for defensive purposes, scalloped brass collars, hardwood shaft and a silver metal ferrule.  
H. 5" x 6 1/2" O.L. 34 1/2"  
\$500-\$800



**112. Sword Cane**  
Ca. 1780 - A nice early coin silver top and eyelet sword cane with a push and pull 29" three-sided foil blade, aged malacca shaft and a 6 1/2" bronze ferrule.  
O.L. 37"  
\$600-\$1,000



**113. Toledo Sword Cane**

Ca. 1900 - A Toledo gun metal handle with a beautiful damascene collar which has a 30" signed Spanish blade with a push and pull mechanism, ebonized shaft and a metal ferrule.  
H. 5" x 4" O.L. 37"  
\$700-\$1,000



**115. Anti-Semitic Folk-Art Cane**

Late 19th Century - A nice carving with its' original patina of a gentleman with an exaggerated nose, a skillfully carved figure in a frock coat, carrying an umbrella, a 3/4" silver collar engraved with the owner's name and a maker's mark of a diamond with the name Sterling, shaft is a stepped tan bamboo stick and a silver metal and iron ferrule.  
H. 3 1/2" x 5" O.L. 38 1/2"  
\$700-\$1,000



**114. Automaton Monkey Cane**

Ca. 1880- A wonderful example of a Black Forrest or Bavarian carved cane handle of a monkey with two color glass eyes and protruding ears, the button on the rear of the handle is pushed and the head turns and the lower jaw drops, by pushing the button swiftly, it appears to look like Kimball Sterling auctioneering, fine working condition with a silver metal collar, oak hardwood shaft and a horn ferrule.  
H. 5" x 2 1/4" O.L. 38"  
\$1,000-\$1,500



**117. Robert M. Foster Equality Folk Art Cane**

Ca. 1890 - A prime folk-art example of Mr. Foster's work who died in Sparta, Missouri around 1900, but this seems to be one of his earlier examples due to the slave carved atop with the words "equality", a nice pod chrome one-piece cane with various animals, utensils, vegetation, tools and more, the shaft is fully carved with original finish, Foster's canes rarely come up at auction and this would be one of his finest. Fine condition with no ferrule. Examples of this cane may be seen in "George H. Myers American Folk-Art Canes" as illustration 199 and 213.

O.L. 36"

\$1,000-\$2,000



**116. Anti-Semitic Folk-Art Cane**

Ca. 1890 - A large natural grown satirical depiction which was acquired by considerable haggling at Portobello Road in London, natural grown root which has been carved with two wonder salt glazed eyes, original shellac and never had a ferrule.

H. 5 1/2" x 4" O.L. 35"

\$800-\$1,200

**118. Folk-Art Cane**

Ca. 1880 - An ornately carved one-piece shaft with flowers, leaves, vegetables and geometric items, nice varnish finish with high relief carving and a pommel handle with semi-circles and a metal ferrule.

O.L. 33"

\$300-\$400



**119. Three Folk Art Portrait Canes**

Ca. 1900 - A group of three fine carvings with nice original finish and all three have ferrules, one has a pair of brass eyelets, and average length is 35"

\$400-\$600





**120. Rooster Folk Art Canes**

Late 19th Century - A pair of folk-art painted and carved rooster canes, one with a hallmarked British collar and the other a simple but desirable oak shaft, both have ferrules.

A.L. 35"  
\$500-\$1,000



**121. Folk-Art Jonah Cane**

Ca. 1880 - A whimsical carving of a giant fish with pearl and glass beaded eyes swallowing Jonah with glass eyes and a long beard, one piece natural grown shaft with pyro work and a missing ferrule.

H. 4 1/2" x 2" O.L. 37"  
\$350-\$500



**124. A Crocodile Dress Cane**

Mid 20th Century - A fully covered crook handle with tanned skin, 18 karat gold signed collar and a black horn ferrule.

H. 5" x 6 1/2" O.L. 36"  
\$400-\$600



**123. A Pair of Silver Dress Canes**

Early 20th Century - Both have minor dents and dings, hardwood shafts and horn ferrules.

A.L. 35"  
\$250-\$400



**122. Folk-Art Dog Collection**

Ca. 1900 - A group of three carved and painted dogs, natural grown full bark branch shafts and all have horn ferrules.

A.L. 36"  
\$500-\$700



**126. Silver Eagle Dress Cane**  
Early 20th Century - A stylized .800 silver eagle handle with a registration mark of "#8692 KHN", the thumb rest on the neck of the eagle has dents and dings from previous wear, German manufactured, beautiful ebony shaft and a horn ferrule.  
H. 4 ¼" x 2 ¾" O.L. 36 ¾"  
\$400-\$600



**125. Alligator Dress Cane**  
Ca. 1950 - A crook handle covered with alligator in fine condition, ¼" gold collar, honey malacca shaft and a horn ferrule.  
H. 4 ½" x 6" O.L. 36"  
\$400-\$600



**129. Horn Fetlock Cane**  
Ca. 1880- An early equestrian carved fetlock cane which has been carved from an American buffalo, detailed carving, exotic wood shaft and a horn ferrule.  
H. 3" x 4" O.L. 38"  
\$400-\$600



**128. Cricket Cage System Cane**  
Ca. 1890 - A removable bone gothic carved cricket cage handle which is probably English made and used in the Chinese communities of London to house their lucky crickets, ornate carving through both sections of the threaded cricket cage, silver collar, faux bamboo-partridge wood shaft and a brass ferrule.  
H. 6" x 7/8" O.L. 38"  
\$500-\$700



**127. Metropolitan Cab Whistle**  
Ca. 1900 - A "The Metropolitan" brass handsome cab whistle used on the streets of London to hail a cab, fine working condition, ebonized shaft and metal ferrule.  
H. 3 ½" x 2 ½" O.L. 36"  
\$400-\$600





**130. Fraternal Horn Cane**

Ca. 1890 - An open carved horn cane with a top loose link (probably Odd Fellows), a very unique carving with much time spent on presentation, gold collar, hickory shaft with bark and a matching gold metal collar and ferrule.

H. 7" x 7/8" O.L. 39"  
\$400-\$600



**131. Mammoth Ivory Cheese Cane**

Ca. 1890 - A whimsical carving of four mice with black beaded eyes peering at small blocks of a variety of cheeses, both front and back, metal collar, hardwood shaft and a metal ferrule.

H. 5" x 1 3/4" O.L. 35 3/4"  
\$500-\$600



**132. Map/Chart Container Cane**

Ca. 1880 - A full metal and brass container cane with faux twigspur decoration, the brass and metal handle can be removed for placement of a group of rolled papers, black paint and a brass ferrule.

H. 2" x 3" O.L. 38"  
\$500-\$600



**133. Russian Pique Dress Cane**

Ca. 1890 - An inlaid Russian silver pique dress cane with delicate work throughout the upper 10" of the hardwood shaft, a metal bullet ferrule.

O.L. 35"  
\$400-\$600



**134. Gambler's Cane**

Ca. 1900 - A faux tortoise shell container which holds four bone dice which are on a felt platform with a magnifying glass top, silver metal collar, ebonized shaft and a metal ferrule.

H. 1 1/2" x 1 1/2" O.L. 35"  
\$500-\$700



**136. Cholla Cactus Cane**  
Dated Dec, 25, 1877-  
Polished cactus cane with  
a silver handle, which is  
engraved Dec. 25, probably  
a Christmas present, nice  
condition and a metal  
ferrule.  
H. 1 1/2" x 2" O.L. 35 1/2"  
\$300-\$400



**135. Wild Boar Trophy Cane**  
Ca. 1900- A large trophy  
boar's tusk with a silver  
metal endcap, fluted  
handmade silver collar,  
American oak shaft and a  
horn ferrule.  
H. 6" x 4" O.L. 38"  
\$400-\$600



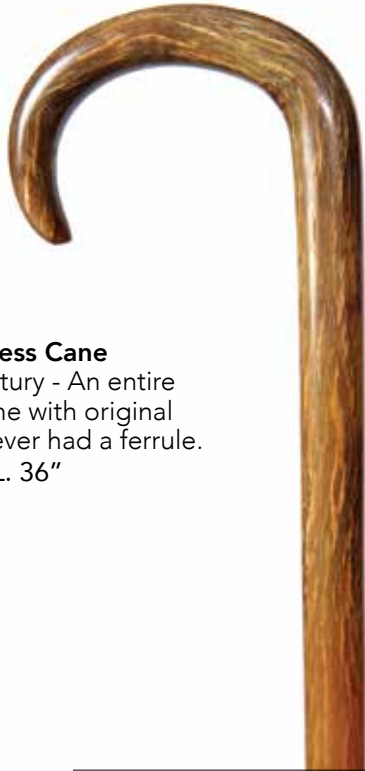
**137. Native American Folk art Cane**  
Ca. 1925 - Carved and decorated ball  
in cage folk art cane, with a native  
American in full bonnet atop, the  
shaft has six cages with twenty-one  
carved wooden balls, nice chisel work  
throughout the shaft and a brass ferrule.  
H. 3 1/2" x 4 1/2" O.L. 35"  
\$400-\$600

**138. Pair of Jacksonville Gators**  
Early 20th century - Two Jacksonville Gators in  
fine condition, both are carved in high relief,  
orange tree shafts and both have metal ferrules.  
Average length 36"  
\$300-\$500



**139. A group of Horn Dress Canes**  
Early 20th century- All three are  
in fine condition, and all have  
horn ferrules, ebony-exotic wood-  
malacca shafts-average length 35"  
\$300-\$600





**140. Horn Dress Cane**

Early 20th century - An entire horn dress cane with original patina, and never had a ferrule.  
H. 3" x 4" O.L. 36"  
\$200-\$300



**141. Spanish Vara Chieftain Cane**

Late 18th century - Prime example of this genre, these canes were given to south American Indians by Spanish colonials, and are a ridiculous reminder of the arrogance of the explorers, this cane is from the Beeman collection and was sold September 25, 1977 as lot number 65, large silver handle and various hand worked silver bands, a 12 1/2" hand forged iron auger ferrule.  
H. 2" x 4 1/4" O.L. 39"  
\$1,200-\$1,800



**142. Cheroot Cane**

Ca. 1900 - Nice bell bronze example which can be loaded and fired by sticking a lit cheroot to the touch hole, fine condition and the handle detaches from the cherry shaft for cleaning and has a metal ferrule.  
H. 3 1/2" x 2 1/4" O.L. 33"  
\$700-\$900



**143. African Trophy Cane**

Dated 1899 - Large African horn which has two silver bands, average age cracks throughout the horn, and a missing ferrule, the upper collar is inscribed "Presented by M. Jepson to G. Scott, July 1899"  
O.L. 36"  
\$300-\$400

**144. Coquilla Nut Cane**

Ca. 1900 - Coquilla nut carving of a native with two color glass eyes, pair of silver collars, twig spur ebony shaft, pair of lanyard holes with lanyard and a metal ferrule.

H. 1 1/2" x 2 1/4" O.L. 33 1/2"  
\$350-\$550



**145. Parrot Dress Cane**

Ca. 1925 - Carved parrot with two color red and black eyes, silver collar, bamboo shaft, and a brass ferrule,

H. 2" x 2 3/4" O.L. 37"  
\$350-\$500



**147. Japanese Monkey Cane**

Ca. 1890s - pair of whimsical monkeys playing with a snake on a large carved log, nice long carved stag handle with original patina, silver metal collar with exotic wood shaft and stopper ferrule.

H. 5" x 2 1/4" O.L. 34"  
\$500-\$700



**146. French Justice Cane**

Mid 19th century - Legend has it that French justices often carried a cane like this, it is also a symbol of clairvoyance, for an example of this cane, see page 212 of "Cane Curiosa" by Dike, ribbed copper collar, stained bamboo shaft and a metal ferrule.

H. 3" x 1 1/2" O.L. 35"  
\$800-\$1200



**149. Japanese Crab Cane**  
Ca. 1890 - carved stag handle with three whimsical crabs, two with small inset eyes and original patina, Handle is signed with two Japanese characters, silver metal collar, exotic wood shaft and a metal ferrule.  
H. 5 ½" x 1 ¼" O.L. 35"  
\$500-\$800



**148. Stag Folk Cane**  
Ca. 1890 - large carved antler with a buck and tree high relief carved on the button, original patina in nice condition, ornate silver metal collar with logs and foliage, natural grown twig spur shaft and a metal ferrule.  
H. 6" x 2 ½" O.L. 35 ½"  
\$300-\$500



**151. Anti-Semitic Stag Cane**  
Early 20th century - nicely carved antler, woven silver collar, ebonized shaft and a metal ferrule.  
H. 4" x 2 ½" O.L. 34"  
\$500-\$600



**150. Boar's Tusk Cane**  
Ca. 1875 - perfect tusk with an ornate chaste Victorian sterling mount, paint decorated bamboo shaft which has had an early repair with an added copper collar and brass ferrule.  
H. 4 ¼" x 3 ½" O.L. 36"  
\$300-\$500



**152. Anti-Semitic Stag Cane**  
Elk horn handle with two color glass eyes, slanted column silver metal collar, exotic wood shaft and a horn ferrule.  
H. 5 ½" x 3" O.L. 37 ½"  
\$500-\$600



**154. Torch System Cane**  
Early 20th century - a kerosene torch cane with a reservoir within the shaft, the brass handle interlocks with a brass collar, the collar has a hallmark of a script s in a box, other than the torch use, it appears that the cane may have also been used as a hand warmer, large brass collar, thick hardwood shaft, and a brass ferrule.  
H. 7" x 1 ½" O.L. 34"  
\$250-\$400



**153. Woodsman's Bird Whistle Cane**  
Ca. 1930 - carved antler handle with a whimsical gentleman with a feathered hat, the extended whistle has a birds nest with eggs and a bird nearby, by blowing at the end of the antler, a nice high pitched whistle is produced, rose gold filled collar, ebonized shaft and a metal ferrule.  
H. 4" x 3" O.L. 35 ½"  
\$500-\$600

**155. French Shadow/Sword Cane**  
Mid 19th century - the bronze handle is a Napoleon Shadow, a push and pull mechanism with a 31" signed Spanish blade, due to the weight of the handle, this would be a bludgeon cane also, hardwood shaft and a brass ferrule, this cane was purchased from the Monek family dispersal cane auction in 1998,  
H. 3" x 1 ½" O.L. 36"  
\$700-\$1,200





**156. Oriental Picnic Cane**

Ca. 1860 - a two compartment picnic cane with a locking silver handle, when the handle is removed two spoons with bone handles and two silver dishes are presented, the second compartment which is ten inches down from the top contains various bone and tortoise forks and chopsticks, the exotic 1 1/2" shaft is decorated with bands of leather, 4" large metal ferrule.

O.L. 37"

\$2,000-\$3,000

**158. Spanish Vera Cane**

Ca. 1800 - nice example with three silver bands and lanyard holder, silver handle and hardwood shaft with a 12" iron ferrule.

H. 1 1/4" x 2" O.L. 34"

\$500-\$600



**157. Anti-Semitic Stag Cane**

Late 19th century - carved stag handle, brass collar, hardwood shaft and a metal ferrule.

H. 4" x 2 1/2" O.L. 36"

\$400-\$600



**159. President McKinley Campaign Horn Cane**  
Ca. 1896 - top of this cane is embossed with McKinley's slogans "Patriotism, Protection, Prosperity", nice original condition, and has a closed tin ferrule.  
O.L. 34"  
\$200-\$300



**160. Horn Sword Cane**  
Ca. 1860 - An American buffalo horn handle, silver metal collar, 27" blued and etched blade with a working push and pull mechanism, malacca shaft and a horn ferrule.  
H. 5" x 1/2" O.L. 37"  
\$700-\$1,000



**161. Black Horn Sword Cane**  
Ca. 1830 - a faux twigspur horn handle, ornate collar, 26" blade with a working push button mechanism, malacca shaft and a 5" brass and horn ferrule.  
H. 3 1/2" x 4 1/2" O.L. 36"  
\$800-\$1,200



**162. Horn Sword Cane**  
Ca. 1820 - A polished horn handle with an inlaid mother of pearl disc atop, coin silver collars, a pair of silver eyelets, 25" gilt and blued working push button mechanism blade, malacca shaft and a 6" brass ferrule.  
\$900-\$1,200





**163. Flick Stick**

Ca. 1860 - A working horn handle flick stick with a 7 1/2" blade, small silver metal collar, ebonized twigspur shaft and a metal ferrule.

O.L. 33"

\$800-\$1,200

**164. Flick Stick**

Ca. 1870 - A horn handle with a silver metal collar, working 7" blade, stepped bamboo shaft and a horn ferrule.

O.L. 35"

\$800-\$1,200



**165. Magister Pistolet Cane**

Pre 1890 - This French cane fires two .22 caliber bullets and when the shaft is disassembled there are various tools hidden and also in the ferrule, (see page 354 of "Cane Curiosa" by Dike to see the details of this cane), exotic wood shaft, gold collar and a metal ferrule. (This cane will need a little gunsmith work for it to fire.)

H. 3 1/2" x 2" O.L. 36"

\$1,500-\$2,500

**166. Days Patent Under Hammer Gun Cane**

Mid 19th Century - A .54 caliber percussion gun cane in working condition, wood stock with a pair of silver eyelets, beaded barrel which has most of its' original paint and a removable horn ferrule.

O.L. 36"

\$1,000-\$1,200



**167. Shotgun Center Fire Cane**

Mid 19th Century - A working shotgun cane with a nice black horn handle, original silver metal collar and trigger button, bamboo shaft and a removable horn ferrule.

H. 4" x 2 1/2" O.L. 35 1/2"

\$1,000-\$1,200

**168. Breech Loading Gun Cane**

Ca. 1875 - A twigspur horn handle, the malacca shaft releases from the brass collar for loading, fine working condition with a brass trigger button on the handle and a horn ferrule.

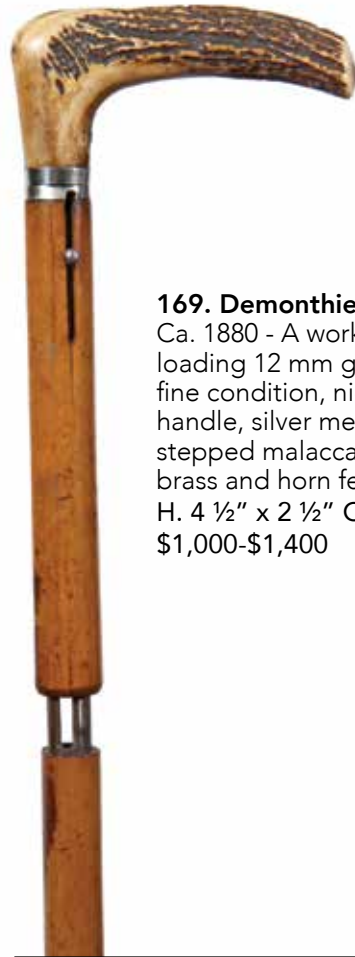
H. 4" x 4 1/2" O.L. 35 1/2" "pin fire probably a .9 mm"

\$1,000-\$1,500





**170. Days Patent Gun Cane**  
Mid 19th Century - A working under hammer percussion muzzle loading gun cane which is signed "Weswood, London" polished wood pistol grip with a lion head medallion mounted on the butt, under hammers were used to keep powder dry when it was raining, two coin silver medallions inlaid on each side of handle.  
H. 3 1/2" x 3" O.L. 36"  
\$1,000-\$1,400



**169. Demonthier Rifle Cane**  
Ca. 1880 - A working, breech loading 12 mm gun cane in fine condition, nice stag horn handle, silver metal collars, stepped malacca shaft and a brass and horn ferrule.  
H. 4 1/2" x 2 1/2" O.L. 35"  
\$1,000-\$1,400



**171. French Pepperbox Gun Cane**  
Mid 19th Century - A horn handle rare pepperbox pistol cane with a 6" dagger, by turning the handle 1/4" turn the pistol is released from the shaft, marked "Paris, Brevete.A.J. (Albert Joubert)", fine working condition and these pepperbox stiletto canes are pictured on various pages in "Cane Curiosa" silver metal collars, hardwood shaft and a metal ferrule.  
H. 4" x 2" O.L. 33"  
\$5,000-\$6,000



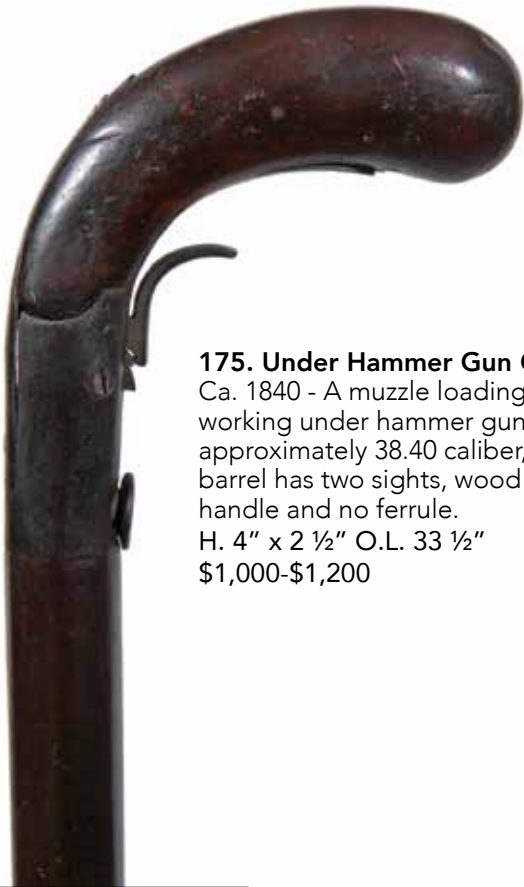
**172. Belgium Chassepot Gun Cane**  
Pre 1890 - A working horn and iron gun cane with a horn and steel handle and a removable ferrule which holds a tool to help cock and clean the gun, it appears to be a .45 caliber chamber and when the gun is cocked the trigger appears, iron barrel which has been wrapped in leather and it is in fine condition.  
H. 4" x 4" O.L. 32 1/2"  
\$1,500-\$1,800



**174. Remington Gun Cane**  
Mid 19th Century - A working .44 caliber Remington cane in fine working condition, silver metal collar, gutta percha handle and covered shaft, exceptional condition, original marked brass ferrule.  
H. 3 1/2" x 2 1/2" O.L. 35 1/2"  
\$5,000-\$6,000



**173. Day's Patent Under hammer Cane**  
Ca. 1830 - A percussion gun cane which has a separate shoulder stock, the shaft is metal and has a brass plate just below the handle which says "Hubbard/Gates," the barrel is also incised "Days Patent", fine working condition with a wooden plug ferrule, one brass plate is attached to the barrel where it attaches to the handle and it has a beaded sight.  
H. 3" x 2" O.L. 35"  
\$1,200-\$1,800



**175. Under Hammer Gun Cane**  
Ca. 1840 - A muzzle loading, working under hammer gun cane, approximately 38.40 caliber, barrel has two sights, wood handle and no ferrule.  
H. 4" x 2 1/2" O.L. 33 1/2"  
\$1,000-\$1,200



**176. Phrenology Porcelain Cane**

Mid 19th Century - A rare porcelain phrenology head in fine condition with some gold leaf decoration and also the interpretation is in gold leaf, small gold collar, rich snakewood shaft and a brass ferrule.  
H. 1 1/2" x 3" O.L. 39"  
Provenance former Rick Berkoff Collection.  
\$1,500-\$2,500



**177. Flatware System Cane**  
Ca. 1865 - A black horn turn handle which is probably American buffalo, a cane of this quality was probably used by a high ranking officer in the military, by removing the handle a 7" interlocking nickel and horn knife and fork set, small horn collar, thick malacca shaft and a black horn handle.  
H. 1 3/8" x 2" O.L. 37"  
\$800-\$1,200





**178. Bone and or Monkey Cane**

Ca. 1875 - A carved horn handle, silver metal collar, three 3" bone monkeys in the hear no evil, see no evil, speak no evil poses, bone ringed collar, exotic carved wood shaft and a brass ferrule.

H. 5" x 1 1/2" O.L. 37"

\$700-\$900

**179. Ivory Pique Cane**

Late 17th Century - A large prime example of one of the most sought after collector's canes in fine condition, a pair of lanyard eyelets which are circled by pique work, coin silver collar with starburst, thick malacca shaft and a 3" brass ferrule. This cane has all the proper paperwork to be sold and shipped interstate.

H. 1 7/8" x 3 5/8" O.L. 37"

\$3,000-\$4,000



**180. Sailor's Macramé System Cane**

Ca. 1860 - Walrus ivory handle, there are six bone macramé tools in the compartment that a sailor probably used for netting, live oak shaft and a horn ferrule.

H. 1 3/4" x 2" O.L. 35"

\$500-\$700



**181. Political Canes**

Collection of five political canes in fine condition including William Jennings Bryan, Grover Cleveland, Benjamin Harrison, Franklin Roosevelt, William McKinley and William McKinley horn cane.

A.L. 35"

\$500-\$700

**182. McKinley/Hobart Political Cane**

Late 19th Century - A hardwood pommel one-piece shaft which has a jugate pin back button atop set in a brass bezel and it has a brass ferrule.

O.L. 32"

\$200-\$300



**183. Karl Marx Jugate Cane**

Late 19th Century - Cast silver plated handle with Karl Marx and Ferdinand Lassalle, names of each character are engraved beneath the high relief bust, Congo wood shaft and a metal ferrule.

H. 1 1/2" x 2 1/2" O.L. 34"

\$100-\$200

**184. Collectable Canes**

Two crook handle canes with Gerald Ford and Franklin Roosevelt, 1939 New York World's Fair bamboo cane and a Franklin Roosevelt picture cane.

A.L. 35"

\$250-\$400





**185. Character Cane**

Ca. 1930- A carved gentlemen with a wild hair style and two color glass eyes, small silver collar, ebony shaft and brass ferrule.  
H. 3" x 2" O.L. 35"  
\$100-\$200



**186. Group of Three Bone and Stag Canes**

An L-handle bone cane with a sleeping hound dog, a bone handle with carved alligator and fish and a stag handle Ca. 1800 with a 5" brass ferrule.  
\$250-\$500



**187. Whale's Tooth Snuffbox Cane**

Late 19th Century - a whale's tooth shaped like an eagle with baleen eyes, hand worked brass end cap which doubles as the compartment lid, small brass collar, hardwood shaft and brass ferrule.  
H. 4 1/2" x 1 3/4" O.L. 35"  
\$600-\$1,000



**188. Collection of Carnival Canes**

Four porcelain carnival canes with original painted shafts in fine condition including the hard to find "Rogue Donald Duck"  
\$250-\$400



**189. Whimsical Stag Cane**

Ca. 1890 - A carved antler with a whimsical carving with a gentlemen with a long nose and two color glass eyes, braided leather collar, ebonized shaft leather ferrule.

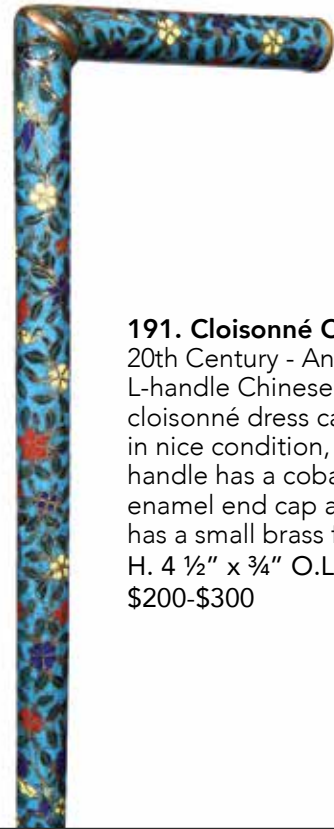
H. 3 ¼" x 3 ¼" O.L. 33"  
\$100-\$200



**190. German Folk Cane**

Dated 1900 - A red deer antler of an "alligator" type man with two color glass eyes, hardwood shaft with natural bark and a metal ferrule.

H. 4" x 4" O.L. 34"  
\$250-\$250



**191. Cloisonné Cane**

20th Century - An L-handle Chinese full cloisonné dress cane in nice condition, the handle has a cobalt blue enamel end cap and it has a small brass ferrule.

H. 4 ½" x ¾" O.L. 33"  
\$200-\$300

**192. Photographer's Tripod Cane**

Ca. 1925 - This cane converts to a 6 foot tripod by removing the metal ferrule and the handle, the camera mount is hidden above the collar, the entire cane is paint decorated metal.

H. 5" x 3 ½" O.L. 36"  
\$200-\$300



**193. Trap Shooting Cane**

Ca. 1930 - English Swaine and Adeney shooter's cane in pristine working condition, leather seat and handles, hardwood shaft and a 5" rotating disk ferrule.

O.L. 34 ½"  
\$250-\$350



**194. Shooting Cane**

Ca. 1930- An English shooter's cane with a leather seat and leather covered hardwood shaft, the disk stopper unscrews from the shaft to be attached to the metal ferrule. O.L. 35 1/2" \$200-\$300



**195. Parade Seat Cane**

Ca. 1935 - English parade seat with a leather covered crutch handle, paint decorated metal shaft and a metal stopper ferrule. H. 4 1/2" x 3 1/4" O.L. 35" \$150-\$250



**196. Sword Cane**

Ca. 1880 - An unusual stacked leather sword cane with a brass endplate, 28" forged blade with a push and pull mechanism, shaft is 1 1/2" wide and a brass ferrule. H. 6" x 6" O.L. 37" \$400-\$600



**197. Pair of Shark Vertebrae Canes**

Late 19th Century - One with a horn handle and the other an exotic wood, nice condition with no problem vertebrae and both have horn ferrule. A.L. 34" \$200-\$400



**198. Sword Cane**

Mid 20th Century - Bamboo root handle which is covered in leather, original leather lanyard, 21" acid etched blade in fine condition with a push and pull mechanism woven leather collar, large bamboo shaft and horn ferrule. H. 7" x 1 1/2" O.L. 35 1/2" \$350-\$500



**201. Reserve Cane**

Dated 1914 - A regimental reserve cane, once belonging to "R Borrman", 173rd regiment, original ribbons and tassels and a bullet ferrule.

H. 1/2" x 2 1/4" O.L. 35 1/2"  
\$150-\$250



**199. Three Malacca Canes**

Ca. 1880 - Three super malacca canes all with horn ferrules, one with a woven leather handle and the other a horn, two have woven gold wire collars, A.L. 35 1/2"  
\$200-\$400



**200. Sword Cane**

Mid 20th Century - A bamboo sword cane with a 23" two-sided blade which has a push and pull mechanism and a metal ferrule.

H. 5" x 6" O.L. 34"  
\$200-\$350



**203. Horse Measure Cane**

Ca. 1860- An early stag horse measure stick which is in need of a new level, brass collar, hardwood shaft and a 6" brass ferrule.

H. 4" x 1 3/4" O.L. 34 1/2"  
\$150-\$250



**202. Guilloche Enamel Dress Cane**

Ca. 1890 - A nice example but handle has damage atop, a karat gold crown with five points is attached to the handle, ebony shaft and a metal ferrule.

H. 1 1/4" x 2" O.L. 36"  
\$150-\$300





**204. Cap Buster Canes**

A group of three cap buster canes in working condition.  
\$100-\$200



**205. Ukulele Cane**

Late 19th Century - A nice "Uke Cane" in original condition with all parts intact and the instrument is even strung, original metal handle and ferrule.  
O.L. 36"  
\$300-\$500



**206. Defensive Cane**

Late 19th Century - A bronze bludgeon cane with a casting of a gentlemen in fancy court attire, bamboo shaft and a metal ferrule.  
H. 1 1/2" x 2 1/2" O.L. 35"  
\$300-\$400



**208. Bludgeon Cane**

Late 19th Century - A bell bronze naughty leg "defensive cane" with a two color horn collar, partridge wood shaft and a horn ferrule.  
H. 3 1/2" x 3" O.L. 36"  
\$350-\$450



**207. Chinese Full Horn Cane**

Late 19th Century - An unusual full horn cane with a collar of dark horn which is inlaid with mother of pearl oriental characters, nice condition, 3" bronze ferrule.  
H. 4" x 3" O.L. 35"  
\$350-\$550



**209. Erotic Canes**  
Early 20th Century - A pair of carved penis canes of which one is horn and the other a burl wood, hardwood shafts and one has horn ferrule.  
A.L. 35"  
\$300-\$500

**210. A Group of Ten Canes**  
Including horse measure, seat cane, folk art, lumber tool and compartment plus more.  
\$500-\$1,000



**211. Five Malacca Canes**  
In fine condition, some with various handles and all have ferrules.  
\$250-\$500



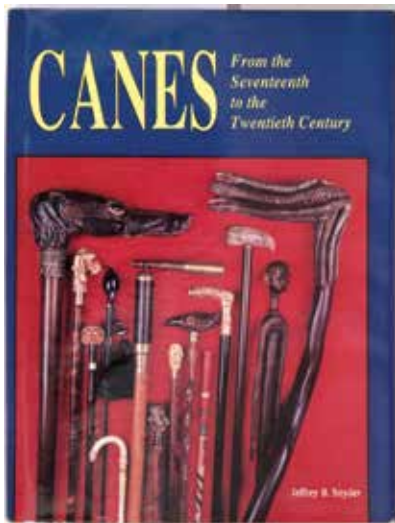
**212. Five Malacca Canes**  
In fine condition, some with various handles and all have ferrules.  
\$250-\$500



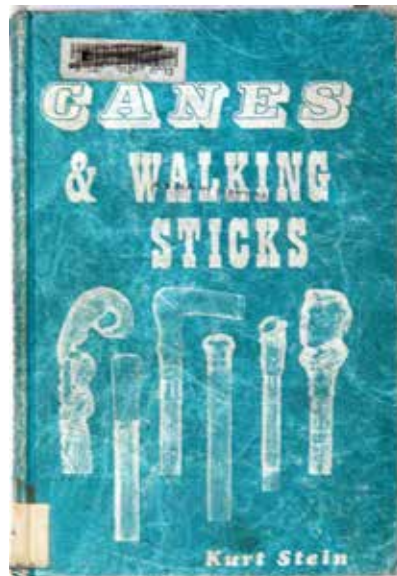
**213. Five Malacca Canes**  
In fine condition, some with various handles and all have ferrules.  
\$250-\$500



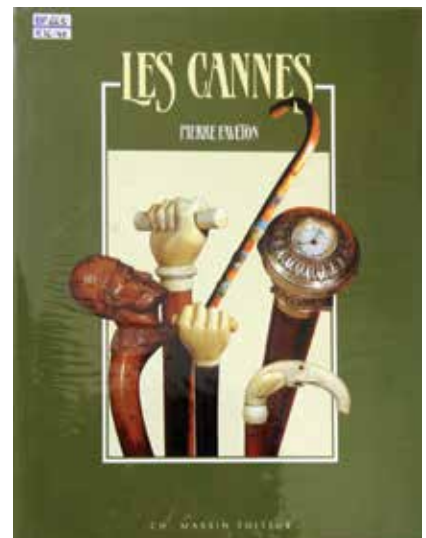
**214. Five Malacca Canes**  
In fine condition, some with various handles and all have ferrules.  
\$250-\$500



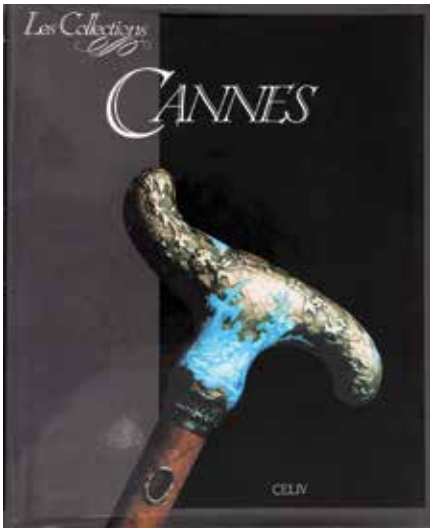
**215. "Canes: From the Seventeenth to the Twentieth Century"**  
Hardback Book by Jeffrey B. Snyder.  
\$50-\$200



**216. "Canes and Walking Sticks"**  
Hardback Book by Kurt Stein.  
\$50-\$200



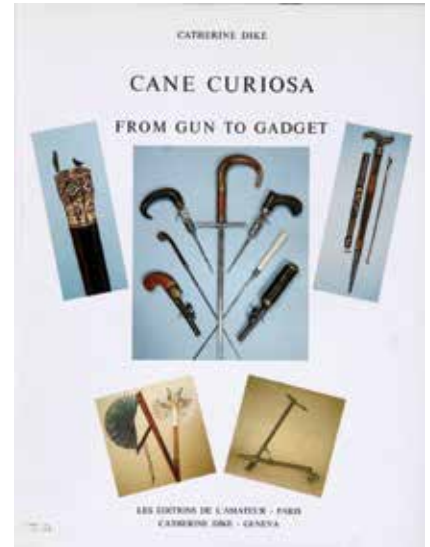
**217. "Les Cannes by Pierre Feveton"**  
Hardback French Book.  
\$50-\$200



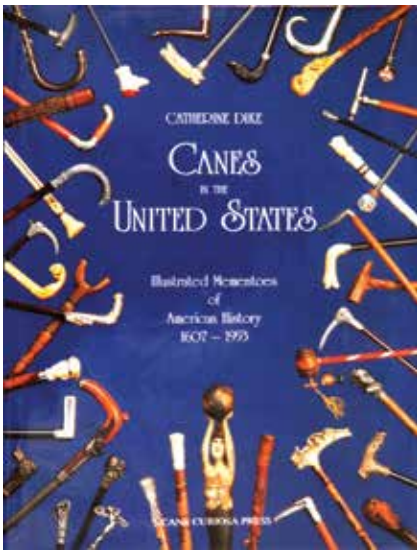
**218. "Les Collections: Canes"**  
French Hardback Book by Celiv.  
\$50-\$200



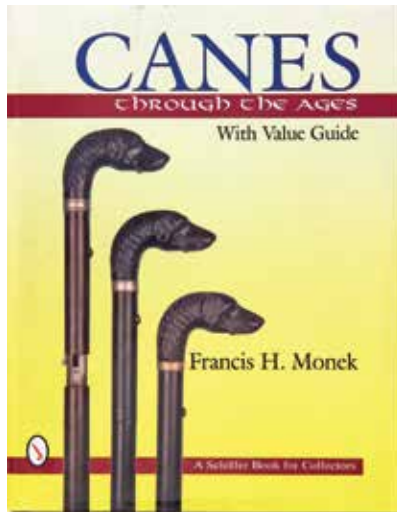
**219. "La Canne Objet D'Art"**  
French Harback Book by  
Catherine Dike and Guy Bezzaz.  
\$50-\$200



**220. "Cane Curiosa: From Gun to Gadget"**  
English Hardback by Catherine  
Dike.  
\$50-\$200



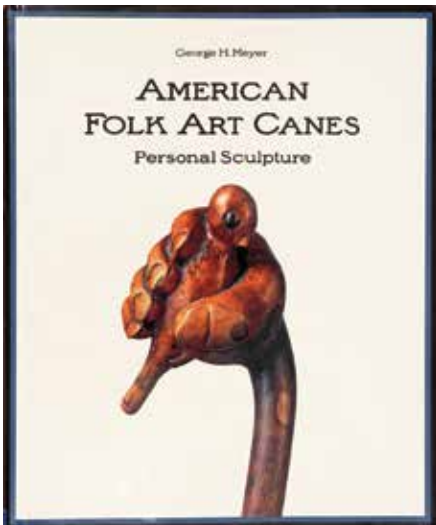
**221. "Canes in the United States: Illustrated Mementoes of American History 1607-1953"**  
Hardback by Catherine Dike.  
\$50-\$200



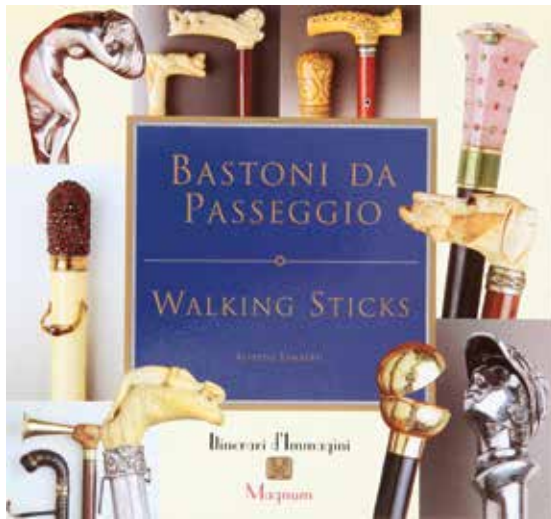
**222. "Canes Through the Ages: With Value Guide"**  
Hardback by Francis H. Monek  
\$50-\$200



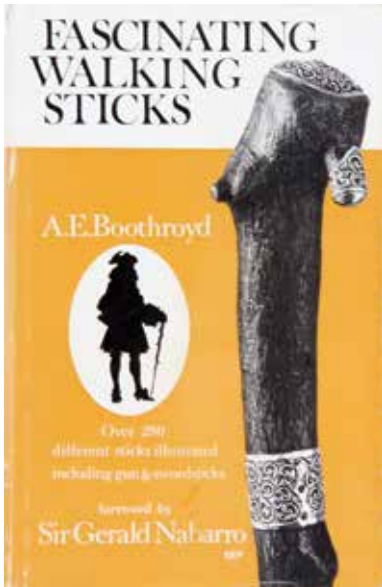
**223. "The Mandel Cane Collection"**  
English hardback by Youssef Kadri.  
\$50-\$200



**224. American Folk Art Canes: Personal Sculpture**  
English hardback by George H. Meyer.  
\$50-\$200



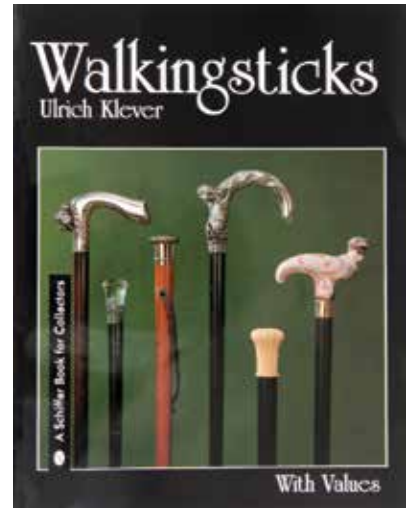
**225. "Bastoni Da Passeggio"**  
Italian softback by Alfredo Lamberti.  
\$50-\$200



**227. "Fascinating Walking Sticks"**  
English hardback by A.E. Boothroyd,  
\$50-\$200



**228. "L'Age de la Maturite: La Canne et ses Mysteres"**  
Exibited Musee de Carouge.  
Softback, French.  
\$50-\$200



**226. "Walkingsticks"**  
English softback by Ulrich Klever.  
\$50-\$200



**229. Lot of Various Cane Catalogs.**  
\$50-\$200





**230. Brass and Iron Cane Stand**  
Late 19th Century - A brass and iron cane stand with original finials and original finish.  
D. 7" x 16" W. x H. 23"  
\$250-\$350



**231. Cherry Cane Stand**  
Ca. 1920 - An original six divide cane stand in original condition.  
15" x 10" 29"  
\$350-\$550



**232. Brass Cane Stand**  
Ca. 1890- An original early brass stand with original finish,  
9" x 9" x 31"  
\$200-\$350



**233. Fruitwood and Brass Corner Cane Stand**  
Ca. 1890 - 13" x 8" x 30"  
\$300-\$500



**234. Brass Vertical Cane Stand**

Ca. 1890 - A wonderful example which is solid brass and a cast iron platform base with five divides.

4 1/2" x 19" x 27"

\$400-\$600

**235. Leather Cordite Container Used for Cane Stand**

A unique late 19th Century British military all leather container marked R.C.D., this container has original lid with a canvas and leather interior and is in fine condition. It held about 40 canes.

D. 35" x 12"

\$400-\$500



**236. Leather Cordite Cane Stand**

A unique leather and canvas container which has part of a decal and no top, this stand held about 20 canes.

D. 8" x 17"

\$200-\$300







Photography by James Price

Catalog Design by KT Design, LLC  
[www.ktdesignllc.com](http://www.ktdesignllc.com)

Kimball M. Sterling, Inc. (TFL-1915)  
125 West Market Street  
Johnson City, Tennessee 37604  
[kimballsterling @ earthlink.net](mailto:kimballsterling@earthlink.net)  
423.928.1471

© Copyright 2018 Kimball M. Sterling, Inc.

[WWW.AUCTIONAUCTION.COM](http://WWW.AUCTIONAUCTION.COM)