

KIMBALL M. STERLING, INC.
Kimball M. Sterling, Inc.

ANTIQUE CANE AUCTION

SATURDAY MAY 14TH, 2007- 11:00 A.M. E.S.T.

PREVIEW

MORNING OF THE SALE - 9:00 A.M. E.S.T.
& FRIDAY MAY 13TH, 2007- NOON - 5:00 P.M. E.S.T.

Live in our gallery and on the internet!

WWW.CANEAUCTION.COM

Kimball M. Sterling Auction Gallery
125 West Market Street Johnson City, Tennessee 37601

kimballsterling @ earthlink.net

423.928.1471

Member National Auctioneers Association



KIMBALL M. STERLING, INC.
Kimball M. Sterling, Inc.

TERMS AND CONDITIONS

Terms and Conditions

1. Cash, check, MasterCard, or Visa A 15% buyers' premium added to the hammer price as part of the sale price for in-house, phone, and absentee bidders. We reserved the right to hold purchases until the buyers checks clears if buyer is not known by us. Bank letter of credit is acceptable. Live Internet bidders will pay a 20% buyers fee. We do not accept American Express or PayPal.

2. Mail or phone bids are accepted; the firm may require a deposit.

3. Kimball M. Sterling, Inc. has endeavored to catalog and describe the property correctly. All property is sold as is and neither the auction company nor the consignor will be responsible for descriptions, genuineness, provenance or condition of the property. No statement in the catalog made orally at the sale or otherwise shall be deemed to be a warranty, representation, or an assumption of liability. Call for a condition report or email for additional photos.

4. In the event of any dispute between bidders, the auctioneer shall have total discretion to determine the successful bidder, in which his determination shall be final or to re-offer and resale the article in dispute. Title of the item or items purchased by the bidder will pass at the fall of the gavel and declaration of bidder.. This is not an approval auction.

5. Principal auctioneer: Kimball M. Sterling #2467. B. Elizabeth Sterling, auctioneer # 5757. Firm Kimball M Sterling Inc. TFL-1915

6. Bidders may bid live on the Internet by visiting <http://www.auctionauction.com> You may also view the auction at this site and bid by phone.

7. Communications: Telephone 423-928-1471. Fax 423-928-2816. Cellular 423-773-4073, 423-773-4072. Email kimballsterling@earthlink.net

8. Worldwide shipping is available, international paperwork is the responsibility of the buyer. We encourage you to use United States Mail. Our packing service is free but the buyer must pay postage and insurance fees of their choice.

9. Kimball M. Sterling, Inc. will not be held responsible for bids not received in time for the auction or slow Internet bids. We will not be responsible for items left on our location for over 30 days.

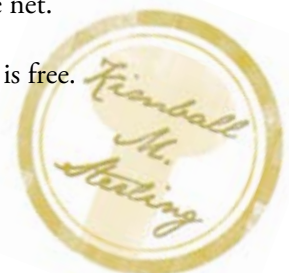
10. Sale will be conducted at 125 West Market Street, Johnson City, Tennessee. 37604. Announcements day of the sale take precedence over pre-sale advertising. Any litigation that pertains to this auction will be conducted in the county of Washington in Tennessee and is agreed upon by registering for this auction.

11. Airport is the Tri-Cities Airport, which is approximately 20 miles from the gallery. Internet catalog and live bidding available at www.auctionauction.com Best Western Hotel: 423-282-2126. A very fine hotel which offers Sterling Auction a discount rate is the Carnegie Hotel 1216 W State of Franklin Rd, (423) 979-6400

12. Please call for condition report on sale lots or email us. We do send out multiple photos by email of any lot in the auction .By registering for this auction you accept the terms and give Kimball M. Sterling auctions the right to charge your credit card on file for purchases and shipping, which you have entered on your registration.

13. The auction will be conducted on Saturday May 12th at 11:00 Eastern time in our gallery and also live on the net.

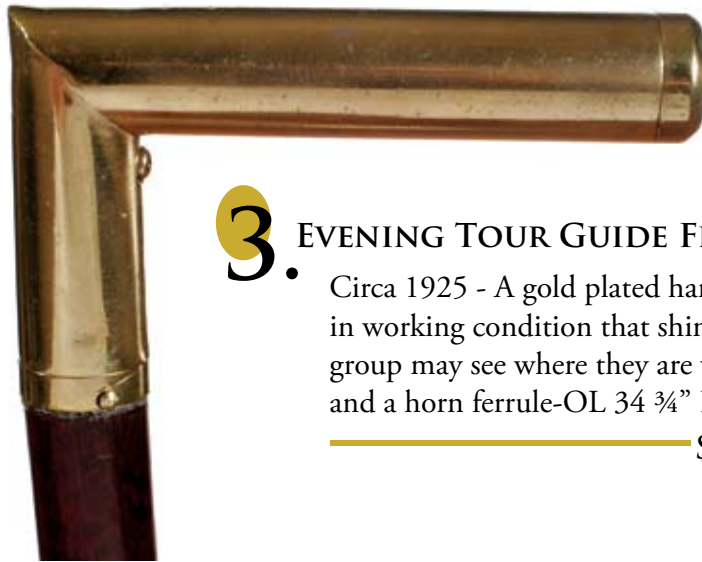
14. Parking service is free.





- 1. PRESIDENT WILLIAM MCKINLEY**
 1896- Campaign noise maker cane marked with the slogan "Patriotism, Protection, Prosperity" - OL 33"
 \$200-\$300

- 2. CHINESE CLOISINÉ**
 Circa 1890 - Asian rosewood shaft and a metal ferrule-OL 35"-
 H 1 3/4" x 1 7/8"
 \$300-\$500



- 3. EVENING TOUR GUIDE FLASHLIGHT GADGET**
 Circa 1925 - A gold plated handle, a push button flashlight in working condition that shines to the rear so that a tour group may see where they are walking, snakewood shaft and a horn ferrule-OL 34 3/4" H 2 1/2" x 4 1/2"
 \$800-\$1200



- 4. CARVED HIPPO IVORY DOGS**
 A Late 19th Century carving of two dogs with inlaid glass eyes, a Malacca shaft, gold collar, and a bi-metal ferrule, OL 36 1/2" H 1 3/4" x 4"
 \$400-\$800



5. IVORY NUDE

Circa 1890 - An Art Nouveau period Cane, exotic wood shaft, horn ferrule-very tastefully carved-OL 36 1/2" H 4 3/4" x 1 1/4"

\$800-\$1200



6. MUNCHENER BILDERBOGEN CARVED STAG

1/2" silver collar, eyelets through horn, stout Malacca shaft and a 2" horn ferrule-OL 37 1/2" H 5 1/2" x 6 1/2"

\$500-\$700



7. SHAGREEN CROOK HANDLE

Small gold collar, blonde Malacca shaft, ca. 1900 and a 1" horn ferrule, OL 35" H 4 1/2" x 5"

\$400-\$600



8. SHAGREEN GOTHIC DRESS CANE

Late 19th Century-Shagreen inlaid into a beautiful and exotic amber colored hard and unique substance, ornate silver collar, massive ebonized shaft and a 2" horn ferrule-OL 37" H 4 3/4" x 1 3/4"

\$500-\$1000



- 9. ART DECO DRESS**
Gold handle, small silver spacer, an ebony triangular shaft and a horn ferrule-OL 35 ½" H 1" x 1"
\$300-\$500

- 10. STERLING GLOVE HOLDER**
Circa 1880-Ebonized shaft, bi-metal ferrule-OL 32 ½" H 2" x 1 5/8"
\$300-\$500

- 11. CARVED IVORY FOX**
Circa 1880-Protruding two-color glass eyes, ornate carved head-dress, exotic wood shaft, gold collar and 1 ½" ivory ferrule-OL 35" H 4 5/8" x 1 ½"
\$500-\$700



- 12. TOLEDO SWORD**
19th Century-The handle is an ornate metal knights gauntlet which is attached to a Malacca shaft, two ¾" silver collars and 1" metal ferrule-Blade is etched Toledo and has a length of 27 ½"-OL 33" H 5 ½" x 1 ½"
\$1000-\$1500

13. SPERM WHALE TOOTH

Circa 1880-A whales tooth with a carved ivory dog inset, sterling collar, black palm shaft and an iron 1 ½" spike ferrule-OL 35 ¾" H 1 ¾" x 5 ½"

\$1000-\$1200



14. LARGE LAPIS KNOB

Early 20th Century-Fluted gold collar, ebony shaft and a bi-metal ferrule-OL 35 ½" H 2" x 2"

\$400-\$800



15. STERLING ANTLER CANE

Circa 1890-Ebony shaft, signed "Lyon Maker"-Bi-metal ferrule-OL 35 ¾" H 3 ½" x 2 ½"

\$300-\$500



16. IVORY BOAR'S HEAD

19th Century-1 ½" ornate gold collar, two colored glass eyes, ebonized Madagascar shaft and bi-metal ferrule-OL 37 ¾" H 2" x 3 ½"

\$800-\$1200





- 17. RHINO HORN**
 Circa 1882-Engraved gold cap with date and ½" gold ferrule-OL 31" 5/8"
 ————— \$700-\$1000



- 18. IVORY SUNDAY STICK**
 Late 19th Century-Scalloped hallmarked presentation silver collar, Madagascar ebony shaft and a brass ferrule-OL 32 ½"
 H 2 ½" x 4"
 ————— \$500-\$1000



- 19. TIGER TOOTH BIRD**
 Circa 1880-Large two colored glass eyes, twig spur shaft, 2 5/8" tooth and a metal ferrule-OL 35"
 ————— \$500-\$700



- 20. ORNATE GORHAM STERLING**
 Circa 1880-Fully hallmarked Gorham Manufacturing Co., hardwood shaft and a bi-metal ferrule-OL 33"
 H 2 ½" x 4 1/8"
 ————— \$600-\$800



- 21. PAPER RING AND HORN**
 Circa 1910-Horn knob handle, in what appears to be thousands of stacked sheets of paper and a 2" brass ferrule-OL 35" H 2 ¼" x 1 5/8"
 ————— \$200-\$300



22. FRENCH GOLD MOURNING CANE

19th Century-A rare and ornate 1" x 1 ¼" gold handle, a rich Malacca shaft and a 1" brass ferrule-OL 35 7/8
\$800-\$1000



23. GOLD DRESS WITH ANIMALS

19th Century-A very ornate handle with three hand chased animals, including deer, goat, and bear with an ebonized shaft and a bi-metal ferrule-OL 34 ½" H 2 ½" x 1 ½"
\$600-\$800



24. PATRIOTIC GOLD OVERLAID PRESENTATION

Circa 1860-Three semi-nude ladies draped with shields and flags, an exotic wood shaft and a 1 ½" bi-metal ferrule-OL 33 5/8" H 2 ¼" x 1 ¼"
\$600-\$800



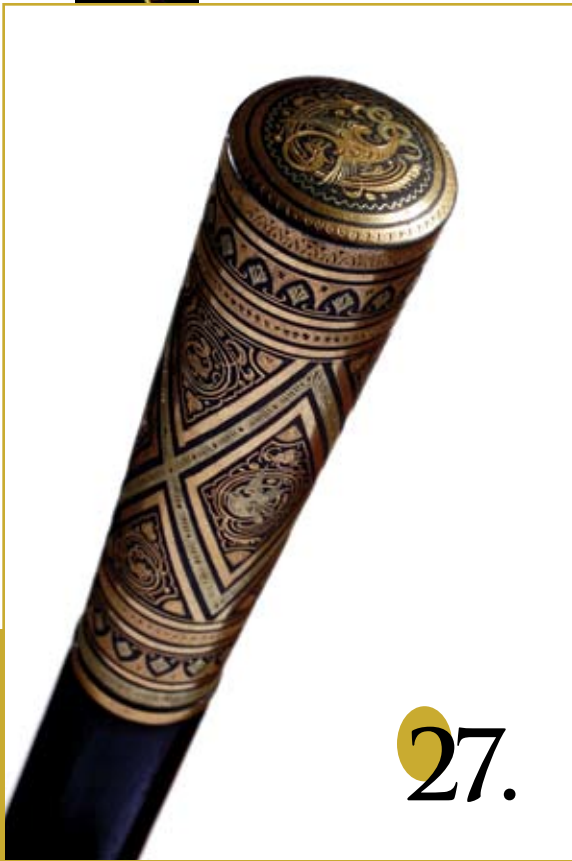
25. EROTIC PORCELAIN KNOB

19th Century-A lady with one breast exposed casting a cherub out to sea, moriage decoration, ornate gold crown collar, exotic wood shaft and a 1" brass ferrule-OL 33 7/8" H 2 ¼" x 2 ¼"
\$400-\$600



26. PORCELAIN DRESS

Circa 1890-Meissen style handle, ornate flowered collar, exotic wood shaft and a bi-metal ferrule-OL 35 ¼" H 1 ¾" x 4 ¾"
\$500-\$700

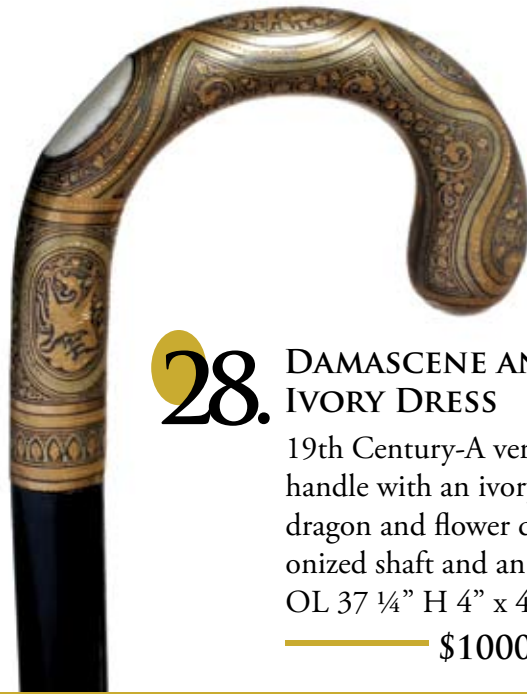


27.

DAMASCENE DRESS

19th Century-Nicely done birds and dragons, hardwood shaft and a brass ferrule-OL 34 3/4" H 3 1/2" x 1"

\$800-\$1200



28. DAMASCENE AND IVORY DRESS

19th Century-A very unique crook handle with an ivory thumb pad, dragon and flower decoration, ebonized shaft and an ivory ferrule-OL 37 1/4" H 4" x 4 1/2"

\$1000-\$1500



29.

STERLING GOAT

19th Century-Hallmarked and signed sterling, ebonized shaft and a metal ferrule-OL 32 3/4" H 1 5/8" x 3 3/4"

\$400-\$600



30. CARVED IVORY DOG
 Circa 1900-Two colored glass eyes,
 signed ornate silver collar,
 ebonized shaft and a bi-metal
 ferrule-OL 35 7/8" H 2" x 2"
 ————— \$400-\$600



31. IVORY FRIAR TUCK
 19th Century-Ornate gold
 collar, bamboo shaft and a 2"
 ivory ferrule-OL 34 3/4"
 H 2 1/2" x 1 5/8"
 ————— \$400-\$600



33. IVORY LADY
 Circa 1866-Signed sterling collar
 with Christmas presentation, rich
 Malacca shaft and a brass ferrule-
 OL 32 1/2" H 1 3/8" x 3 3/4"
 ————— \$400-\$600



**32. BURL WITH SILVER
 OVERLAY**
 19th Century-Ornate flower and
 vine silver overlaid which con-
 forms to the natural shaft and a
 bi-metal ferrule-OL 35"
 ————— \$300-\$500



34. FOLK-ART SNAKES

Late 19th Century-An ivory knob, two carved stylized snakes on a natural twig spur shaft, with no ferrule-OL 32 3/8" H 2 1/8" x 1 1/4"

— \$800-\$1200



35. CIGAR LIGHTER SYSTEM STICK

Circa 1925-A brass lighter attached to a Mahogany handle which unscrews, the shaft has two cigar containers within, bone ferrule. This was probably a custom made stick for a wealthy cigar smoker of yesterday.-OL 36" H 3 1/4" x 1 5/8"

— \$1000-\$1500



36. EUROPEAN ANTLER CANE

19th Century-An ornate carved and dyed handle with animals, guns, and swords, relief carved, rich snakewood shaft and a brass ferrule-OL 37 1/4 H 3" x 1 1/4"

— \$600-\$800



37. MICMAC NATIVE AMERICAN CANE

Early 20th Century-No ferrule-OL 34 1/4"

\$400-\$600

38. AFRICAN AMERICAN FOLK

Circa 1900-A one piece finely carved head and snake with a cartouche signed by the maker with the initials M.N., no ferrule-OL 35 3/4"

\$400-\$600

39.

FOLK-ART SNAKE

Circa 1920-Carved snake and vine, hardwood shaft, metal collar and a brass ferrule-OL 36 3/4"

\$300-\$500

40.

FOLK-ART SNAKE

An Early American Presentation with India ink calligraphy, dated either 1817 or 1877, no ferrule-OL 38"

\$400-\$600



41.

AMERICAN
FRATERNAL
FOLK-ART

Mid 19th Century-A one piece, carved and painted Odd Fellows cane with no ferrule-OL 33 1/4"

\$500-\$700



42.

FOLK-ART HUNTING CANE

Late 19th Century-A one piece twig spur shaft with a carved hoof and silver horseshoe for the handle. The scene depicts a hunter with a back-pack of liquor, shooting at a rabbit deep in the ground which has been immobilized by his rough and ready hunting dog. A unique brass ferrule-OL 35 1/4"

\$500-\$700



43.

FOLK-ART MALLARD

Early 20th Century-A one piece burl, carved cross-hatch shaft with no ferrule-OL 34 1/2"

\$400-\$600



44.

FOLK-ART RABBIT

Dated 1901-A folk-art Quito souvenir stick with nine different scenes and no ferrule-OL 36 1/2"

\$400-\$600



45.

FOLK-ART SNAKE

Circa 1930's-A fully carved and burned snake cane-
OL 41 1/2"

\$200-\$400



46.

FOLK-ART BIRD

Late 19th Century-A one piece folk-art bird with no ferrule and a twig spur shaft-OL 38 1/2"

\$300-\$500

ASIAN IVORY
Circa 1670



the



47. ENGLISH PIQUE

Circa 1670-A very well patinated handle with eyelet's, hallmarked 1" silver collar and a rich Malacca shaft, 3 1/4" iron ferrule-OL 33 3/4" H 3 1/4" x 1 1/4"

\$3500-\$4500





48.

FOLK-ART CARVED HAND

Mid 19th Century-A beautifully carved right hand with a gold ring on the ring finger, a very fine twig spur shaft, and a 4" bi-metal ferrule-OL 35"

\$400-\$700



49. ASIAN IVORY

Menji Period-Rats with glass eyes holding what appears to be some type of gourd, mixed metal ornate collar with decorated fruits, vegetables and leaves, ebonized shaft and a horn ferrule-OL 37" H 3" x 1 1/2"

\$1500-\$2500



50. EROTIC IVORY NUDE

Mid 19th Century-A fully exposed ivory nude, hallmarked silver collar, exotic wood shaft and a bi-metal ferrule-OL 34 5/8" H 1 1/4" x 5"

\$3000-\$3500



51.

STANDING IVORY NUDE

Mid 19th Century-A finely carved ivory nude with full details, hallmarked silver collar, oval ebonized shaft and a bi-metal ferrule-OL 36 3/4" H 3 1/8" x 1 1/2"

\$3000-\$3500



52. WHALING PRESENTATION

Mid 19th Century-An inscribed New Orleans silver cap whale's tooth with inlaid tortoise and a silver tip, shark spine shaft, ornate silver and brass 3" ferrule. The hinge on the silver cap attached to the tooth which is also a snuff box is in need of silver solder-OL 35 1/2" H 4" x 1 1/8"

\$3000-\$4000



53. MASSIVE IVORY LEDA AND THE SWAN

Circa 1670-Fan styled frame carving and c scroll Viennese design on the collar. Twig spur natural shaft and a 3" silver tip ferrule. This cane has no hallmarks because it predates the process-OL 35 3/8" H 6" x 1 3/4"

\$6000-\$9000





54. CARVED IVORY AND SILVER

Mid 19th Century-A massive carved handle with two racing stallions, a heavy overlay of sterling, floral designs, hardwood shaft and a bi-metal ferrule-OL 32 ¾" H 5" x 2"

— \$2000-\$3000



55. LARGE IVORY SNAKE

19th Century-A massive snake with glass eyes wrapped around a tree trunk, ornate silver collar, hardwood shaft and a metal ferrule-OL 32 ¾" H 4 ½" x 1 ¾"

— \$1500-\$2500



56. IVORY HANSEL

19th Century-The massive ivory handle depicts Hansel in the Witches stewpot at the gingerbread house yelling for Gretel, bone collar, hardwood shaft and a decorated bone ferrule-OL 34" H 3 ½" x 3 1/8"

— \$2000-\$2500



57. HISTORICAL H. M. J. VICTORY SHIP

Early 19th Century-This cane is made from oak that was salvaged from the ship Victory. It was Admiral Nelson's Flagship in 1805 at the battle of Trafalgar when he crushed Napoleon's Navy. Nelson was England's greatest Naval hero. The ornate silver collar has "H.M.J. Victory, 1765" engraved upon it. Original brass ferrule-OL 35"

— \$2500-\$3500





58. HISTORICAL "SANDOVAL" SOUVENIR

Circa 1900-This cane is made from the Spanish Gunboat "Sandoval" captured by the American Navy in 1898 during the battle for Manila in the Spanish American War. The large silver collar is inscribed "Teak Wood, From Deck of the Spanish Gunboat Sandoval. Captured in the American Spanish War of 1898"- Bi-metal ferrule-OL 33 1/8"

\$1500-\$2000



59. CHIMPANZEE GLOVE HOLDER

Circa 1880-A whimsical carving which has a push button which lowers the bottom jaw, two color glass eyes, carved and painted teeth, leather collar, Malacca shaft and a metal ferrule-OL 36 1/4" H 3 1/4" x 4 5/8"

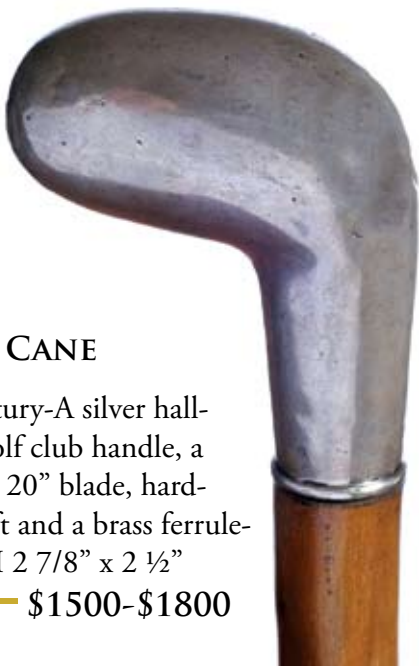
\$800-\$1200

61.

SWORD CANE

19th Century-A silver hall-marked golf club handle, a four sided 20" blade, hardwood shaft and a brass ferrule-OL 34" H 2 7/8" x 2 1/2"

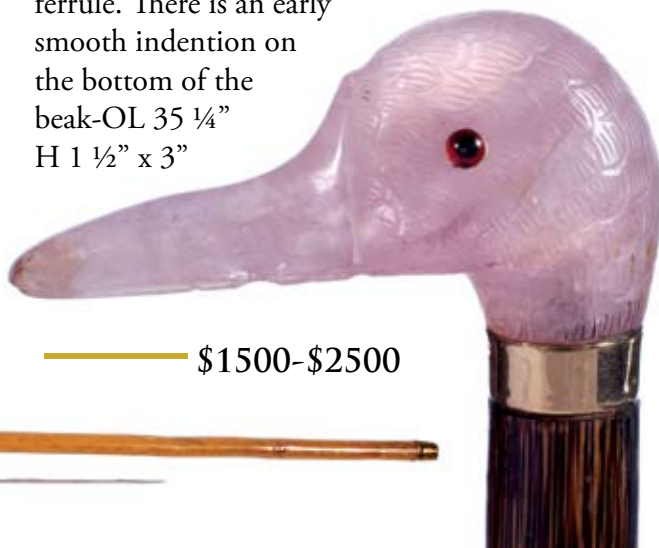
\$1500-\$1800



60. ROSE QUARTZ DUCK

19th Century-Two color glass eyes, 14 K Gold collar, Partridge wood shaft and a horn ferrule. There is an early smooth indentation on the bottom of the beak-OL 35 1/4" H 1 1/2" x 3"

\$1500-\$2500





62. TOLEDO SWORD CANE

19th Century-Silver Mushroom handle with engraved monogram and hallmarks, a nickel plated 24 5/8" signed Toledo blade, massive bamboo shaft, and horn ferrule-OL 35 5/8" H 1 1/4" x 1 1/2"

\$1500-\$2000



63. ORNATE SILVER SWORD

19th Century-Continental Hallmarks, .875 silver, four-sided 20 1/2" blade, hardwood shaft and brass ferrule-OL 35 3/4" H 2 1/2" x 3 7/8"

\$1500-\$2000



64. TOLEDO SWORD CANE

19th Century-A 1/3 engraved 27 1/8" blade signed Toledo Spain on both sides, massive oak shaft with locking handle, brass collar and a well worn brass ferrule-OL 33 3/4"

\$1000-\$1500

65. RARE SWORD

19th Century-A very rare and unusual paint decorated metal shaft and handle of the likes we have never seen before. The paint decoration simulates an exotic wood. German silver handle, collar and ferrule. The 17" blade is near mint and is etched, blued, and gilded.-OL 33 1/4"

\$2500-\$3000





66.

IVORY COCKATOO SWORD CANE

19th Century-The 33" American blade is etched with an eagle and various scrolls. The blade also has a medial ridge which is full length. The 3" eagle has spread wings and is in flying mode. Stepped hardwood shaft, two horn spacers in the handle and a carved ivory ferrule-OL 37 7/8" H 3 7/8" x 1 3/4"

\$3000-\$4000



67.

IMPORTANT INKED AND ETCHED FOLK-ART

Circa 1850-This is the finest cane of this type we have ever offered. There are scenes depicting a semi nude Eve and Adam at the Garden of Eden, an Omnibus Stagecoach with passengers, boxing matches, bird hunters with dogs, old Inns with servers, swans, rabbits, snakes, pigs and much more. The cane is inscribed "Mr. J. Walker, March 27 1850". The handle is in the shape of a stylized bird with many geometric and flower designs. A rich and deep patinated one-piece twig spur and no ferrule.-OL 36 5/8"

\$4000-\$6000



68.

CARVED KITTY CAT

Early 20th Century-A black forest carved cat with a bow tie ribbon, yellow and black glass eyes, ebonized shaft, small signed sterling collar and a sterling ferrule-OL-34 3/4" H 3 1/2" x 2"

\$500-\$700



69. HOLLOW GLASS

Early 20th Century-A deep burgundy and white thread runs throughout the cane with original, unbroken tip. The pommel handle is 2" wide-OL 35 5/8"

— \$400-\$600



70. ASIAN IVORY

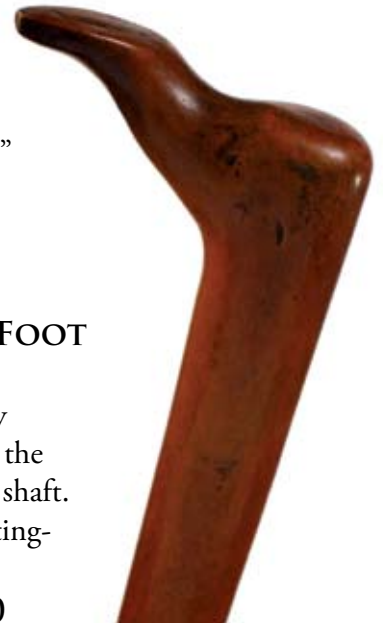
Late 19th Century-A finely carved handle with 20 Asian faces, ribbed silver collar, a hardwood faux bamboo shaft, and a horn ferrule-OL 35 5/8" H 1 1/2" x 1 1/4"

— \$800-\$1200

71. FOLK-ART FOOT

Late 19th Century-A very graceful foot is carved on the end of a one-piece maple shaft. The ferrule is a bullet casting-OL 35 1/2"

— \$200-\$300



72. MASONIC FOLK-ART EAGLE

Mid 19th Century-A black painted open beaked eagle with an incised Masonic compass with the letter G within, hardwood branch shaft, found in Pennsylvania-OL 34"

— \$300-\$400



73. MONKEY AND SNAKE FOLK-ART

Early 20th Century-A monkey with pop eyes attached to a hardwood shaft with two snakes carved, found in Ohio, possibly African-American and no ferrule-OL 32 1/4"

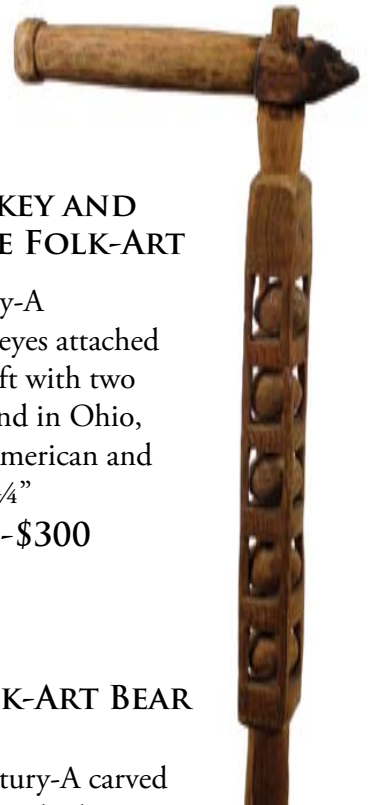
— \$200-\$300



74. FOLK-ART BEAR

Early 20th Century-A carved whimsical bear with glass eyes, five folk carved ball in cages, yellow pine shaft and a lead ferrule-OL 32 1/2" H 8" x 1 3/4"

— \$400-\$800





75.

FRATERNAL
FOLK-ART

Early 20th Century-
A hatchet handle
carved with an eagle
and flowers attached
to a chip carved
hardwood shaft and
a metal ferrule-OL
38" H 8" x 3"

— \$200-\$300



76. FOLK-ART
SNAKES

Early 20th Century-A finely
decorated and polychromed
hardwood shaft with two
rattlesnakes, carved and
crosshatched shaft, carved
decorated wood collar and no
ferrule. Probably early Mexican-
OL 32 1/2"

— \$200-\$300

FOLK-ART
SNAKE

78.

Late 19th Century-A one-
piece hardwood twig spur with
a very well carved octagonal
handle with 9 point triangles
as the handle. A very finely
carved snake entwines the
entire cane.-OL 35 1/2"

— \$400-\$600



79. DARTMOUTH
COLLEGE INDIAN

Circa 1911-Carved shaft with student's names,
purchased from a New Hampshire family, much
better than the average Dartmouth cane, with
a metal ferrule. Repairable separation between
handle and shaft.-OL 34 1/2" — \$200-\$300

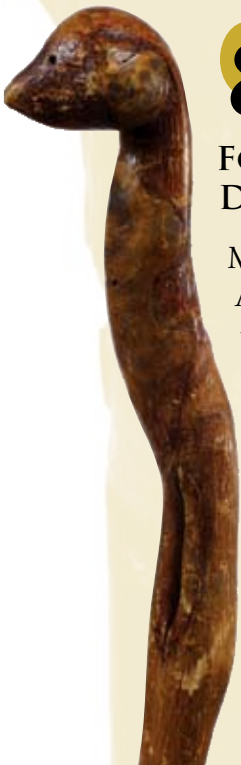


80.

FOLK-ART
DOG

Mid 19th Century-
A one-piece, burl
with bark primitive
cane-OL 32 1/8"

— \$200-\$300





81. FOLK-ART DUCK

Circa 1880-A miniature carved delicate duck head handle on a slender twig spur shaft, Found in Pennsylvania-OL 32"

— \$100-\$200



82.

FOLK-ART MAN

Late 19th Century-A very primitive and unique piece with an L handle that is pegged through the shaft, a 3" copper collar with rose head nails attaching the two-piece shaft, found in Pennsylvania-OL 36"

— \$200-\$400

83.

FOLK-ART CREATURE

Mid 19th Century-A carved creature in a hat with mustache and goatee carved on a one-piece naturally grown shaft-OL 32"

— \$200-\$300



84.



FOLK-ART DOG

Late 19th Century-A stylized carving on a curly cherry one-piece shaft. OL 39"

— \$200-\$400



85. FOLK-ART SNAKE

Mid 19th Century-A very primitive and stylized carving of a snake ready to strike. Naturally grown hardwood shaft and no ferrule-OL 34"

— \$100-\$200



86.

FOLK-ART FOOT

Late 19th Century-One-piece carved foot and polychromed vines and possibly Native American-OL 29 3/4"

— \$100-\$300



87. FOLK-ART SNAKE

Late 19th Century-A painted black root snake with open mouth, metal eyes, metal tongue, and brass ferrule-OL 32 ½"

— \$100-\$300



88.

FOLK-ART

Early 20th Century
A carved one piece hardwood cane found in Iowa-OL 36 ½"

— \$200-\$300



89.

MEXICAN FOLK-ART MASTERPIECE

Early 20th Century-Cross-hatched polychrome shaft decorated with six snakes, two knobs and the head of a dragon. no ferrule-OL 35 ½"

— \$200-\$300



91.

FOLK-ART FOX

Circa 1900-
A carved and stylized fox handle attached to a maple shaft and a metal ferrule-OL 36 ½"
H 6" x 1 ¾"



90.

FOLK-ART FIST FACE

19th Century-A very mysterious and maybe conjure stick. It has a very heavy barked hardwood shaft with numerous worm holes or maybe they were voodoo pin holes, painted eyes and mouth and no ferrule-OL 40"

— \$300-\$400



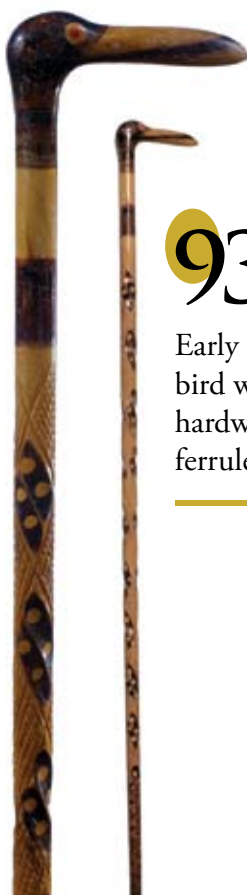


92.

FINE
AMERICAN
FOLK

Dated 1903- A one piece carved and decorated Eskimo carved cane with the initials of the maker and also inscribed "5100 ft Mt. Moria Juneau Alaska Eagles Nest"-OL 35"

\$400-\$800



93. FOLK-ART
BIRD

Early 20th Century-A carved bird with cross-hatching on hardwood shaft and brass ferrule-OL 36"

\$100-\$200

94. FOLK-ART
CREATURE

19th Century-A primitive creature, thorny shaft and signed "W. B.", found in Iowa-OL 34"

\$200-\$400



95. EROTIC
STANHOPE

Early 20th Century-An ornate silver capped crook handle, a Stanhope of a lady with exposed breasts, hardwood shaft and a bi-metal ferrule-OL 35 1/4"

\$500-\$1000



96.

WHALEBONE
NAUTICAL

Mid 19th Century-A fine nautical carved fist attached to a whalebone shaft with two baleen spacers, original, with no ferrule-OL 37 1/4"
H 1 5/8" x 1 3/4"

\$2500-\$3500



97. RHINO HANDLE DRESS

Circa 1900-14K Gold engraved collar, rich snakewood shaft and a brass ferrule-OL 36 1/4" H 2 3/4" x 4 3/4"

— \$800-\$1200

98. CLAM SHELL IVORY

Late 19th Century-A pair of ivory clam shells applied to the hardwood handle, a button and cuff ivory collar and a brass ferrule-OL 35 7/8" H 2 1/2" x 1"

— \$800-\$1200



100. CARVED PARROT

Circa 1900-Carved 7" parrot with two-color glass eyes and painted beak and a hardwood shaft carved like a natural branch, and a horn ferrule-OL 36"

— \$400-\$800



99. IVORY AND SILVER PRESENTATION

Late 19th Century-Col. E.F. Cosset dress cane, wonderful silver ball and thread overlay, engraved silver collar, ebony shaft and a horn ferrule-OL 35 1/2" H 4 1/4" x 1 1/2"

— \$400-\$800



101. FORGED IRON SWORD

Early 19th Century-A European blacksmith made decorated sword with a 20 1/2" four-sided pike blade, the handle screws into the shaft-OL 31 1/2" H 7" x 2 1/4"

— \$800-\$1200





102. BELGIAN SHOTGUN CURIO

Third quarter of the 19th Century, the gauge appears to be the European version of a #410. Makers mark is worn but visible on the breech. Horn handle, removable horn ferrule, exotic wood covered iron shaft and brass collar. Brush push button trigger and is in good working condition-OL 36" H 4" x 4"

\$1500-\$2000



103. G. A. Y. BELGIAN SHOTGUN CURIO

Third quarter of the 19th Century-Makers mark stamped in breech, very large gauge, working condition, silver collar with turn and drop trigger, metal plug ferrule, black horn handle with early repair, and mahogany over iron shaft-OL 37" H 4 3/4" x 3"

\$1500-\$2500



104. CARVED ASIAN BONE

Late 19th Century-Ornate gold collar, ebony shaft and a metal ferrule-OL 35 7/4" H 6 1/2" x 1 1/2"

\$500-\$1000



105. FLASHLIGHT SYSTEM STICK

Early 20th Century-Gold Collar inscribed "Pittsburg Shriners" bakelite tip and a metal ferrule, working condition-OL 37 1/4"

\$500-\$1000

106. CARVED ASIAN IVORY

Late 19th Century-Three monkeys playing while a crab which swallows the leg of one, ornate sterling collar, partridge wood shaft and a metal ferrule-OL 37 1/4" H 4 3/4" x 1 3/4"

\$1000-\$1500





107. 1694 IVORY PIQUE

An ivory pique handle with the initials "R.L.", carved holes for sling, silver collar, massive Malacca shaft and metal ferrule, nice original cane of the period-OL 33 ¼" H 4" x 1 ½"

— \$2000-\$3000



108. MECHANICAL MONKEY

19th Century-A French made automaton with two-color glass eyes, painted mouth and tongue, downward push lever, original silver paint and bamboo shaft with horn ferrule, working condition-OL 36" H 2 5/8" x 2 1/8"

— \$800-\$1200



109. PATRIOTIC GOP DRESS

Early 20th Century-A bakelite and silver plated handle with a spread eagle and a stately elephant, stepped hardwood shaft and a metal ferrule-OL 34" H 2 ½" x 4 ½"

— \$500-\$700



110. IVORY DOGS

Mid 19th Century-Ivory pistol grip handle with three very finely carved canines, woven leather collar, stout Malacca shaft and a metal ferrule-OL 35" H 2 ½" x 3"

— \$1000-\$1500





111. SILVER NUDE

Late 20th Century-A very fine sterling casting, ebony shaft and a bi-metal ferrule-OL 36" H 2 1/4" x 5"

\$500-\$700

112. CARVED SCHOLAR STICK

Mid 19th Century-A one piece natural grown shaft with black glass eyes (two missing) and a 4" brass spike ferrule-OL 33 3/4"

\$300-\$500



113. SILVER FROG

Late 20th Century - Signed sterling frog on a lotus blossom, ebony shaft and a metal ferrule-OL 36" H 3 7/8" x 1 3/8"

\$500-\$700



114. NAST STYLE EAGLE DRESS

Late 19th Century-Many handles done in this style were done by Tiffany and Company, glass eyes, exotic wood shaft and a metal ferrule-OL 33 3/4" H 2 3/8" x 3 5/8"

\$600-\$900

115.

ELK ANTLER MAN

Late 19th Century-Some might think this is a dirty old man, signed silver collar, glass eyes, rich Malacca shaft and a metal ferrule-OL 36 3/8" H 6" x 3 3/4"

\$600-\$900





116. IVORY MEERKAT DRESS

Late 19th Century—Two-color glass eyes, silver collar, nice bamboo shaft and a bi-metal ferrule—OL 34 5/8" H 1 5/8" x 4 1/4"

————— \$600-\$900



117. CARVED OWL MAN

Late 19th Century—A carved man in an owl head dress with two-color glass eyes, brass collar, black palm shaft and a bi-metal ferrule—OL 39 5/8" H 3 x 2 1/2"

————— \$500-\$1000

20th Century CARVED LION



118. CARVED LION

Early 20th Century—A carved one-piece lion with a carved and inlaid belt buckle collar attached to a hand decorated chain on the shaft, metal ferrule—OL 34 3/4"

————— \$200-\$400

INLAID
ASIAN

119.

Mid 20th Century—An exotic wood inlaid with mother of pearl and other woods and a brass ferrule—OL 35 7/8"

————— \$400-\$600



120.

FRATERNAL FOLK-ART

Dated 1899—A carved wood and bone shaft inscribed "Fraternal Order of the Eagles 1899", the cane also is signed by it's owner or maker with initials and a carved cross, there's a 2 1/2" separator and a 4" bone ferrule with some visibility of gold paint on the lettering—OL 36"

————— \$400-\$800





121.

SAFARI TROPHY CANE

Victorian-A well mounted trophy cane with two boar's tusk, an 1843 \$5 U.S. Gold Coin, a carved ivory collar, a twig spur shaft with ivory inserts and a bone ferrule-OL 35" H 5 1/2" x 5"

\$800-\$1200



122. CARVED ASIAN IVORY

19th Century-Massive carved ivory head with fine details, blonde Malacca shaft and a horn ferrule-OL 34 3/4" H 3" x 2"

\$800-\$1200



123. IVORY HOODED MAN

Late 19th Century-Carved face inserted into a one piece hooded garment, carved trunk and vine shaft, metal ferrule-OL 34 3/4". Ivory face is 2" x 1"

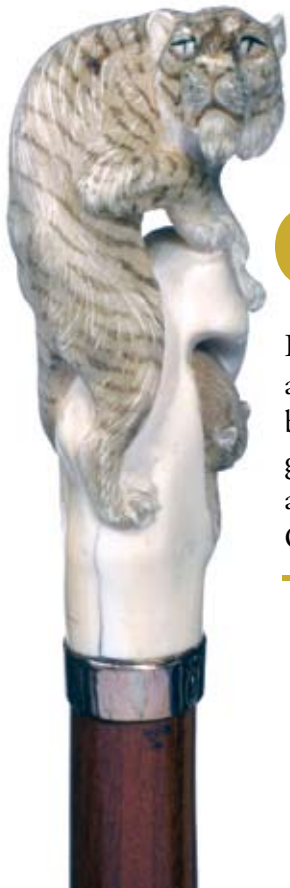
\$800-\$1200



124. FOLK-ART EAGLE

Early 20th Century-Two-color glass eyes, metal collar, beaded metal inlays on a bamboo shaft with a metal ferrule-OL 35 1/2" H 2" x 3 1/2"

\$300-\$500



125. ASIAN IVORY TIGER

Late 19th Century-A carved and decorated tiger with two baboons, hallmarked 9kt gold collar, exotic wood shaft and an ivory ferrule-OL 36 3/4" H 3 1/2" x 1 1/2"
 \$1000-\$1500



126. IVORY KNOB HANDLE

Circa 1850-A circular inscribed ivory handle, silver collar and eyelet's, hardwood shaft and a metal ferrule-OL 35 5/8" H 1 5/8" x 1 1/2"
 \$400-\$600



FOLK-ART SNAKE AND LIZARDS 127.

Early 20th Century-A walnut shaft with two lizards and a coiled snake, brass collar and a brass ferrule-OL 35 1/2" H 2 5/8" x 3 5/8"
 \$300-\$500



128. HOLLOW COBALT GLASS

Early 20th Century-A near perfect symmetrical piece of art glass with a rubber stopper which covers a rough edge. -OL 38 1/4"
 \$400-\$600



IVORY NYMPH 129.

Circa 1890-A carved ivory lady's face set into a burl knob handle and shaft, a cigar band style gold collar and a copper ferrule-OL 38"
 \$400-\$600



130. TANDEM SWORD SHADOW CANE

Late 19th Century-An ivory knob shadow, silver collar, push button lock which reveals two heavenly engraved blades of which one is 13" and the other is 7", bamboo shaft and an original brass ferrule- OL 35 3/8" H 1 3/4" x 1 7/8"

\$2000-\$3000



131. HOREHOUND SOLID GLASS

Late 19th Century-A twisted and four-sided glass cane with minimal breakage at the tip-OL 36 3/4"

\$300-\$500



132. IVORY AND ENAMEL

Mid 19th Century-A Prussian enamel and silver eagle metal is inlaid into the top of the handle, ivory eyelets, Malacca shaft and a brass ferrule-OL 32 5/8" H 4 1/8" x 1 7/8"

\$700-\$1200



134. CARVED DOG

Early 20th Century-A massive carved dog head with two-colored glass eyes, metal collar, blonde Malacca shaft and a bi-metal ferrule-OL 34 1/4" H 4 1/2" x 3 3/4"

\$500-\$800



133. IVORY FACE

Late 19th Century-An ugly scrimshawed face with an exotic wood spacer and shaft, and a bone ferrule-OL 32 3/4" H 4 1/2" x 2 1/4"

\$500-\$1000

135. FOLK-ART MASTERPIECE

Circa 1900-A carved and inked Grant's Stand Fast Whiskey stick. The shaft is carved with six hunting hounds and seven bottles of Grant's liquor. The handle is carved in the shape of a stylized dog and there is a 4" iron ferrule-OL 35 1/2"

\$800-\$1200





136. BAKELITE AND SILVER DRESS

Circa 1930-A large silver flower is overlaid on an amber bakelite handle attached to an inscribed Lucite collar, stained Malacca shaft and a metal ferrule-OL 33 5/8" H 2 7/8" x 1 3/4"

\$300-\$500



137. MUSICIANS SYSTEM STICK

Mid 19th Century-A dignified carved monkey with glass eyes and carved teeth, a brass and silver collar with a buckle that doubles as a tripod which attaches to the shaft. The lyre is attached to the shaft by removing the ferrule-OL 36" H 2" x 2"

\$1500-\$2500



138. WATCH MAKER SYSTEM STICK

Late 19th Century-A system stick which contains a specimen bottle, magnifying glass and other machinist instruments. The main handle has a cartouche attached with a coat of arms and a label which says "John Weatherston Watch Maker and Jeweler, Eareston". A 9" brass collar holds all of the instruments and it is attached to a hardwood shaft with a brass ferrule.-OL 37 1/2" H 3 1/2" x 1 1/2"

\$2000-\$3000



139. VICTORIAN SNAKE

Circa 1870-An impressive English handle combining silver and mother of pearl on a rosewood shaft. The handle depicts a fabulous snake with a well modeled silver head and scales with green cabochon emerald eyes, an elegant mother of pearl body with a silver scale collar and an elegant mother of pearl body with a silver scale collar, good original condition-OL 38 1/2" H 3 1/2" x 3

\$1800-\$2200



140. ENGLISH SILVER GILT KNOB

19th Century-A finely engraved handle with leaves and flowers, the handle is inlaid with colored gemstones such as garnets, colored topaz, sapphires and other semi precious stones. The craftsmanship is "over the top" elegant. The shaft is a rich snakewood and it has a horn ferrule, good original condition-OL 36 1/4" H 2 1/2" x 1 1/4"

\$1600-\$1800



141.

AMERICAN DANDY CANE

Circa 1900-A semi precious agate hard stone, rosewood shaft, totally covered by a superb and finely engraved silver work basket with flowers framed by scroll work on the top, good original condition-OL 37 3/4" H 1 3/4" x 1 3/4"

\$800-\$1200



142. EARLY SCEPTER CANE

Circa 1820-An unusual brass and ironwood cane with a spike iron ferrule-OL 35 1/2" H 6 1/2" x 4"

\$500-\$1000

TIFFANY CROOK HANDLE

143.

Early 20th Century-A Malacca crook handle with a 14K gold collar signed Tiffany, inscribed to Fred Housman and a horn ferrule-OL 35"

\$1200-\$1800



144. COMPASS SYSTEM STICK

Mid 19th Century-A bone handle with a small compass inlaid in the top, silver collar, Malacca shaft and a 3" ferrule-OL 35" H 2 1/4 x 1"

\$500-\$1000



145. CAT GLOVE HOLDER

Circa 1900-Two-color glass eyes, a lower jaw which drops with a push of a frontal button, hammered silver collar, rich snakewood shaft and a brass ferrule-OL 38" H 3 1/4" x 1"

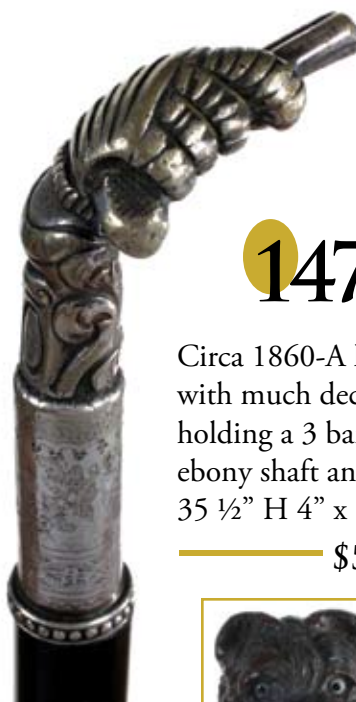
\$500-\$1000



147. GUN AND GAUNTLET DRESS

Circa 1860-A hand chased handle with much decoration on a hand holding a 3 barrel dueling pistol, ebony shaft and a metal ferrule-OL 35 1/2" H 4" x 1"

\$500-\$1000



146. TORTOISE DRESS

Circa 1880-An ornate gold handle, a full tortoise shaft and a metal ferrule-OL 35" H 1 1/2" x 1"

\$1500-\$2500



148. CARVED DOG

Late 19th Century-Signed sterling collar, two-color glass eyes, ebony shaft and a metal ferrule-OL 34 1/2" H 1 1/2" x 1 1/2"

\$300-\$500

149. LANG GUN CANE



\$5000-\$10000



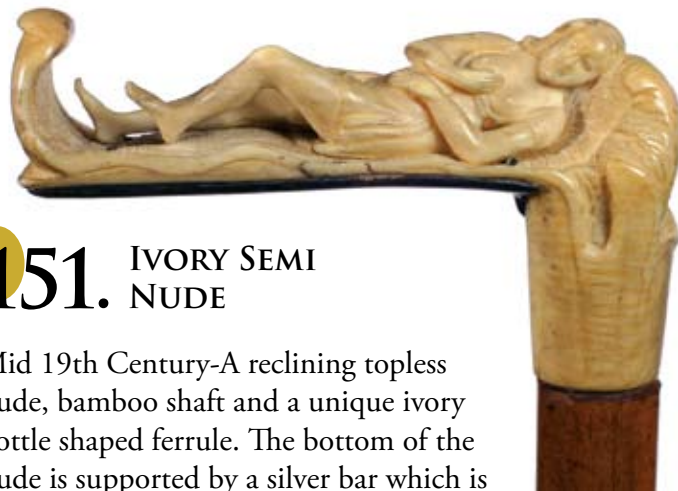
19th Century-This cane which has all of the accoutrements is boxed in its original Lang's of London, Mahogany case. It has two barrels, and the iron gun is paint decorated. It is very unusual to find a gun cane of this quality in its original case. When the handle is attached to barrels the length of the cane is 36"



150. GOLD OVER HORN

Early 20th Century-Hall-marked J.K. rose gold collar, faux bamboo exotic wood shaft and a horn ferrule-OL 36 1/2" H 1 1/2" x 3"

\$300-\$500



151. IVORY SEMI NUDE

Mid 19th Century-A reclining topless nude, bamboo shaft and a unique ivory bottle shaped ferrule. The bottom of the nude is supported by a silver bar which is an early repair.-OL 37" H 3 1/4" x 1 1/2"

\$400-\$600



152. PIQUE POMANDER

Circa 1687-A wonderful example of pique work by which the top unscrews for the keeping of smelling salts. The pique work is detailed throughout with the date and initials, large sterling collar, sterling eyelet's with piqued acorn hanging from a leather lanyard, Malacca shaft and a wonderful 3 1/2" brass ferrule-OL 35" H 6 1/4" x 1 1/4"



\$3500-\$4500



153. VICTORIAN TROPHY

Circa 1875-A trophy boars tusk ornately capped with silver, a draped silver collar, a natural bark shaft and a horn ferrule-OL 36 1/2" H 4 1/4" x 3"

\$500-\$800

154. TELESCOPE SYSTEM STICK



Early 20th Century-A four tier brass telescope with lenses, large brass collar and a hardwood shaft and a copper ferrule-OL 30 1/2" H 7" x 1 3/4"

\$400-\$600

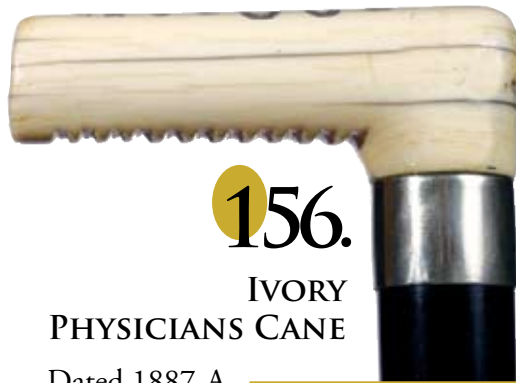




155. IVORY MASONIC

Victorian-Carved collar with Masonic emblems, rich Malacca shaft and a 3" ivory ferrule-OL 30 1/2" H 3" x 5"

— \$300-\$500



156.

IVORY PHYSICIANS CANE

Dated 1887-A presentation, silver collar, ebony shaft and a horn ferrule-OL 36" H 4" x 1 1/2"

— \$500-\$800

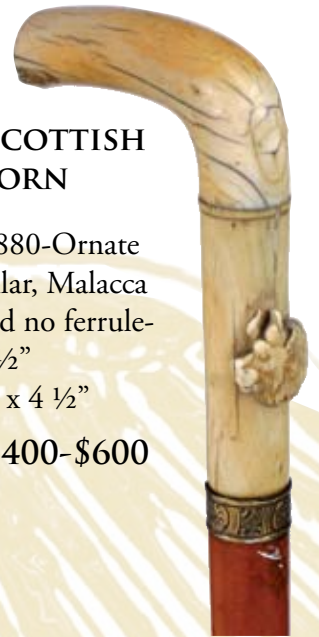


157.

IVORY SCOTTISH LONGHORN

Circa 1880-Ornate gold collar, Malacca shaft and no ferrule-OL 33 1/2" H 3 1/2" x 4 1/2"

— \$400-\$600



158. HORN SWORD CANE

Circa 1860-Massive horn handle, hall-marked ornate and scrolled collar, Malacca shaft and a 4-sided 27" blade, metal collar and brass ferrule-OL 36" H 5" x 1 1/2"

— \$700-\$1200



160. UNIQUE SWORD CANE

Victorian-A unique brass wrapped horn handle with a ribbed brass collar, bamboo shaft with a 29 1/2" blade-OL 36" H 1 1/2" x 2"

— \$500-\$1000



159. UGLY IVORY MAN

Mid 19th Century-A uniquely carved man with a four-banded ivory collar, rich Malacca shaft and an ivory ferrule-OL 32 1/2" H 1 3/4" x 2"

— \$500-\$800





161. ENAMELED ART GLASS DRESS

Circa 1890-A violet satin glass handle with white enameled, two small brass collars, stepped partridge wood shaft and a metal ferrule-OL 35 1/2" H 3" x 1"

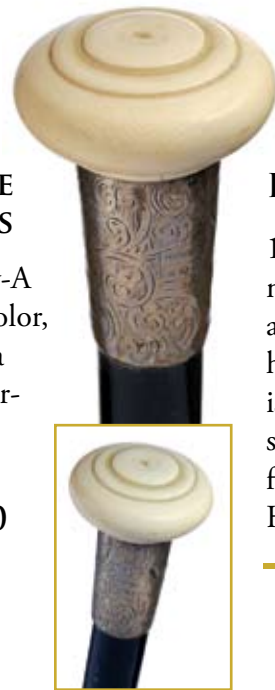
— \$200-\$400



162. AGATE DRESS

Early 20th Century-A beautiful agate in color, gold collar, Malacca shaft and a metal ferrule-OL 35" H 1" x 2 1/2"

— \$300-\$500



163.

IVORY KNOB

19th Century-A mushroom handle, an engraved and hallmarked British collar, ebonized shaft and an ivory ferrule-OL 35 1/2" H 2" x 1/2"

— \$300-\$500



164. SILVER DRESS

Circa 1885-An ornate silver knob handle with silver collar, a very rich Malacca shaft and a metal ferrule. This cane was sold by Butterfield's and Butterfield's as lot 2612 in the estate of Sammy Davis Jr.-OL 36" H 2" x 2"

\$500-\$1000



165. SILVER DRESS

Mid 19th Century-An ornate silver handle, in need of some minor repair, with a black onyx stone with black onyx inlaid in a cartouche, Malacca shaft and a metal ferrule-OL 35" H 2 3/4" x 1 1/4"

— \$300-\$500



166. WHISTLE SYSTEM STICK

Early 20th Century-By unscrewing the hand hammered hallmarked handle, a flute system stick may be pulled from the shaft, a twig spur shaft and a metal ferrule-OL 35 1/2" H 1 1/2" x 1 3/4"

— \$300-\$500



168. SIR JOHN MCLEOD'S SILVER CANE

Mid 19th Century-An early hallmarked presentation handle, a massive honey Malacca shaft and a copper ferrule-OL 36"
H 1 1/2" x 1 3/4"

\$200-\$400



167. EROTIC ASIAN IVORY

Early 20th Century-A carved and signed Asian lady, hallmarked gold collar, ebony shaft and bone ferrule-OL 36"
H 2 3/4" x 1 1/4"

\$500-\$1000



169. CARVED ASIAN IVORY

Late 19th Century-An ivory Kappa done in great detail, fishing for the seven carved miniature crabs on the base of the handle, metal collar, exotic wood shaft and a bi-metal ferrule-OL 36" H 1 1/4" x 4 1/4"

\$800-\$1200



170.

CONTINENTAL FOLK

Late 19th Century-A paint decorated and carved one-piece shepherd's crook with a metal ferrule-OL 41"

\$100-\$200



172.

PATRIOTIC G.A.R.

Late 19th Century-A metal handle with eagle, flag, and sword decoration, ebonized shaft and missing ferrule-OL 35" H 2 3/4" x 2 1/2"

\$200-\$400

IVORY KNOB

171.

Circa 1850-Walrus ivory, metal collar, silver eyelet's, exotic hardwood shaft and a 3" brass ferrule-OL 35"
H 3" x 1 1/2"

\$200-\$400





173. DEER STAG

Circa 1875-Very ornate rose gold collar, Malacca shaft, and a bi-metal ferrule-OL 35 1/2" H 4 1/4" x 1 1/4"

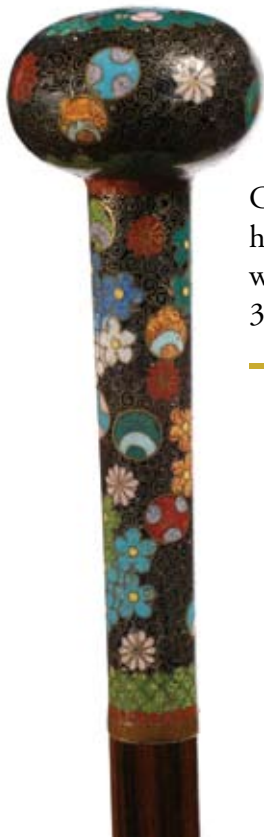
\$200-\$300



174. ORNATE SILVER DRESS

19th Century-Large blank cartouche, British hallmarks, stout Malacca shaft and a bi-metal ferrule-OL 33" H 3" x 1 1/2"

\$200-\$400



175. CHINESE CLOISINÉ

Circa 1885-Work done by a master's hand, small copper collar, exotic wood shaft and a bone ferrule-OL 36" H 4 3/4" x 1 1/2"

\$300-\$400



176. CHINESE CLOISINÉ

Circa 1885-A very well done cane with minor damage near the small copper collar, ebonized shaft and metal ferrule-OL 35 1/2" H 9 1/4" x 1 1/2"

\$300-\$500



177. ENGLISH DRESS

19th Century-An engraved silver handle with a peafowl, maker's marks, stout Malacca shaft and a brass ferrule-OL 34 3/4" H 3 1/2" x 1 1/2"

\$200-\$400



178. CARVED EROTIC ASIAN

Late 19th Century-A male and female perched out of a wooden egg, a bamboo shaft and missing ferrule-OL 35 1/2" H 2 3/4" x 2 1/3"

\$300-\$500





179. ROLLED GOLD DRESS

Victorian-Assigned rolled gold plated dress handle, a hexagonal hardwood shaft and a horn ferrule-OL 33 ¾" H 1 ¾" x 1 ¼"

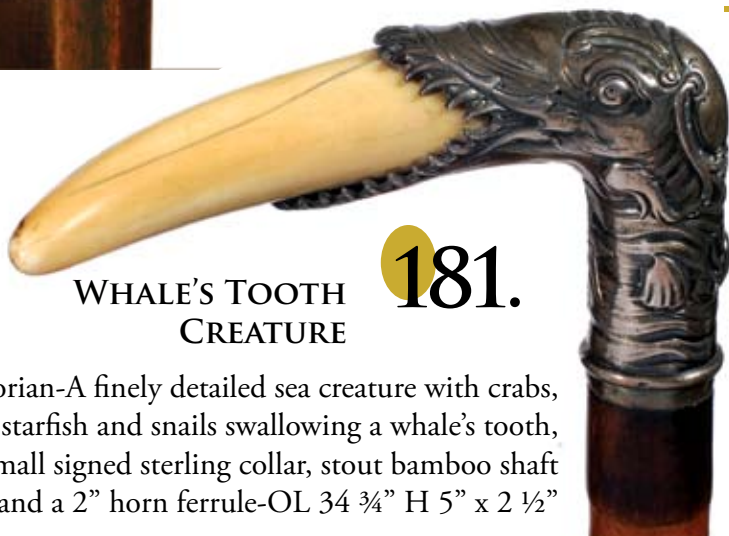
— \$200-\$400

180.

SILVER SPANIEL

Circa 1900-A silver spaniel, a marked 800 silver collar, hardwood shaft and a missing ferrule-OL 37" H 3" x 2"

— \$400-\$600



WHALE'S TOOTH CREATURE

Victorian-A finely detailed sea creature with crabs, starfish and snails swallowing a whale's tooth, small signed sterling collar, stout bamboo shaft and a 2" horn ferrule-OL 34 ¾" H 5" x 2 ½"

— \$800-\$1200



183. STAG FOLK-ART

Victorian-Inscribed handle with C.P.H., metal collar, one silver eyelet, knob shaft and a metal ferrule-OL 35 ½" H 3 ½" x 1 ¼"

— \$200-\$300

IVORY KNOB

184.

Mid 19th Century-Unreadable silver collar, Malacca shaft and a brass ferrule-OL 31" H 2 ½" x 1 ¼"

— \$300-\$400



182. PORCELAIN DRESS

Late 19th Century-A fine German porcelain hand decorated handle, silver collar, rich snakewood shaft and a horn ferrule-OL 34 ¼" H 2 ¼" x 1"

— \$300-\$400



185. IVORY KNOB

Mid 19th Century-Gold collar, slick and worn twig spur shaft and a bi-metal ferrule-OL 33 ½" H 2 ½" x 1 ¾"

— \$300-\$500

GOLD DANDY STICK 186.

Circa 1917-Inscribed diminutive gold filled handle, ebony shaft and a metal ferrule-OL 36" H 2" x 1"

— \$200-\$300



187. ANGLO AMERICAN IVORY

Late 19th Century-A massive ivory wild cat with an African animal in his mouth, small hammered silver collar, massive exotic wood shaft and a metal ferrule-OL 37" H 3" x 2 ½"

— \$500-\$1000



188. IVORY KNOB

Circa 1870-Small metal collar, carved hole for strap, English Oak and a brass ferrule-OL 36" H 2" x 1"

— \$200-\$400



189. GOLD DRESS

Circa 1850-A high relief crane in a marsh with an enameled background, Malacca shaft and a brass ferrule-OL 34" H 1" x ½"

— \$300-\$500



191.

IVORY DRESS

Victorian-A diminutive carved ivory, small silver collar, ebony twig spur shaft with inserted ivory dots and a metal ferrule-OL 36" H 5" x 2 ½"

— \$200-\$400



190. PORCELAIN DRESS

Victorian-Porcelain knob handle with hand painted cherub with flute, ornate copper collar, spit partridge-Wood shaft, and a bi-metal ferrule-OL 33 ¾" H 2" x 2"

— \$200-\$300



192. BENNINGTON STYLE PORCELAIN

Early 20th Century-A fine Bennington porcelain style handle, large brass collar, exotic wood shaft and a metal ferrule-OL 33" H 2 1/2" x 3 3/4"

— \$200-\$400



193. IVORY FIGURAL

Circa 1900-Two-color glass eyes, pewter bow tie, hard wood shaft and a metal ferrule-OL 33" H 2" x 2"

— \$400-\$800



194. GOLD DRESS

Circa 1870-An unmarked rose gold, ornate dress handle, a Malacca shaft and a bi-metal ferrule-OL 36" H 1" x 1 1/2"

— \$400-\$800



195. SIGNED SILVER HORSE

Early 20th Century-Hallmark and number handle, ebonized shaft and missing ferrule-OL 39" H 6" x 5"

— \$400-\$800

SOON TO BE SYSTEM STICK 196.

Circa 1930-The handle unscrews to become a container for something you wish to place in it, massive snake wood shaft and missing ferrule-OL 31 1/2" H 1 1/2" x 3"

— \$200-\$300



197. GOLD DRESS

Victorian-Hallmarked gold handle, exotic hardwood shaft and a metal ferrule-OL 34" H 3 1/2" x 1"

— \$200-\$300



ORNATE SILVER DRESS 198.

Late 19th Century-Original Malacca shaft and a bi-metal ferrule-OL 34" H 2 3/4" x 1 1/2"

— \$300-\$500





199. BRITANNIA DRESS

Late 19th Century-Four various facial expressions, Malacca shaft and a 4" copper ferrule-OL 35" H 1 1/2" x 1 1/2"

\$400-\$800



200. IVORY DRESS

Victorian-A carved and twisted, small ivory crutch, ornate rose gold plated collar, stepped bamboo shaft and a brass ferrule-OL 32" H 2 1/4" x 3"

\$200-\$300



201.

18KT DRESS

Circa 1925-A marked 18kt crutch handle, a stepped partridge wood shaft and a metal ferrule-OL 37" H 3" x 3"

\$400-\$800



202. STERLING DRESS

Circa 1880-An ornate signed sterling handle, ebonized shaft and missing ferrule-OL 33" H 3" x 1 1/4"

\$200-\$250



203. CARVED STAG

Circa 1890-Ornate silver collar, hardwood shaft and a metal ferrule-OL 35" H 3" x 3"

\$200-\$400



LEDA AND THE SWAN

204.

20th Century-A bronze, well executed heavy handle, rich snake wood shaft and a copper ferrule-OL 35" H 4" x 3 1/2"

\$400-\$600

205.

SILVER DRESS

Circa 1880-A sea serpent with a ladies face which has exposed cleavage, unreadable hallmarks, exotic wood shaft and a brass ferrule-OL 36" H 3 1/2" x 3 1/2"

\$300-\$500





206. IVORY KNOB

Circa 1850-Walrus ivory knob, leather collar in the shape of a coiled snake, elm shaft and a bi-metal ferrule-OL 36" H 2" x 2"

\$400-\$600

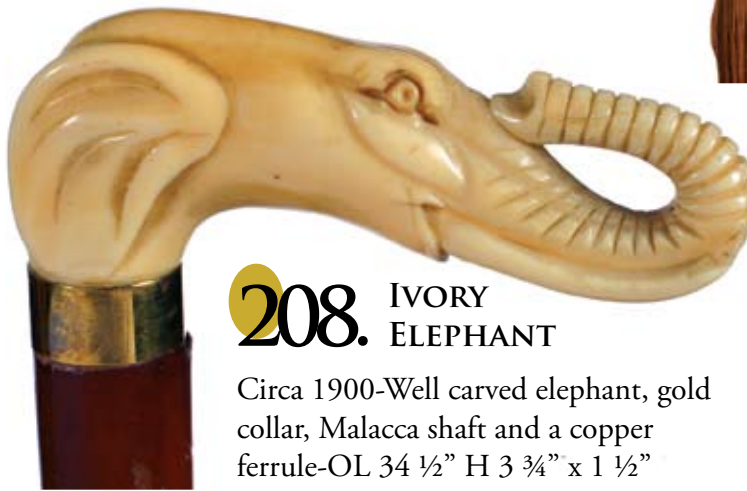


207.

AFRICAN-AMERICAN STAG

Circa 1880-L handle antler, ribbed silver collar, tree trunk shaft and a metal ferrule-OL 35" H 4" x 4 1/2"

\$300-\$500



208. IVORY ELEPHANT

Circa 1900-Well carved elephant, gold collar, Malacca shaft and a copper ferrule-OL 34 1/2" H 3 3/4" x 1 1/2"

\$500-\$1000

211.

CLOISINNÉ AND SILVER

Early 20th Century-Engraved silver handle with British hallmarks, silver collar, exotic wood shaft and a horn ferrule-OL 38" H 5 1/2" x 1 1/2"

\$400-\$800



209. GARNET AND SILVER DRESS

Circa 1900-Unreadable hallmark, mini cabochon garnets with cross hatched carving into the handle, ebony shaft and a horn ferrule-OL 34 1/2" H 3 1/2" x 1"

\$500-\$800

210. CARVED IVORY

Circa 1920-Large silver collar, inlaid green cabochon, ebony shaft and a bi-metal ferrule-OL 38" H 3" x 2 1/2"

\$300-\$500





212. TWO IVORY FACES

Circa 1890-A one piece twig spur shaft with two grotesque ivory faces inlaid into the handle and a bi-metal ferrule-OL 35 1/2"

\$300-\$500



213. FREE COINAGE PROSPERITY CAMPAIGN CANE

Late 19th Century, hardwood shaft and no ferrule-OL 35" H 3" x 1 1/2"

\$200-\$300



214. FOLK-ART FACES

Circa 1900-A one-piece carved and decorated cane-OL 38"

\$100-\$200



215. AMERICAN RELIGIOUS SYSTEM STICK

Late 19th Century-An engraved silver metal handle which has three compartments, which would hold materials for communion or for "last rights". This item once belonged to a high ranking official in the Chicago City Catholic Church. Heavy ebony shaft, numbered and lettered and a metal ferrule-OL 35" H 2" x 1"

\$800-\$1200



216. CARVED IVORY CAT

Circa 1860-A beautifully carved French cat with green glass eyes, ivory collar, snakewood shaft which is in very good condition and a horn ferrule-OL 33 3/4" H 3 1/4" x 1 3/4"

\$1300-\$1500

218. IVORY KNOB

Mid 19th Century-Ebony shaft and a brass ferrule-OL 35" H 1 ½" x 2"

\$300-\$400



217. ENGLISH COUNTRY CANE

Circa 1900-A one-piece beech wood shaft, two-color glass eyes, sold by and marked "Howell"-OL 36"

\$500-\$600



219. CARVED AFRICAN-AMERICAN

Circa 1870-Hallmarked gold collar, Malacca shaft and a horn ferrule-OL 35 ½" H 2" x 2"

\$500-\$1000



220. NAPOLEON IVORY

Early 19th Century - An early carving of Napoleon and two other gentlemen, silver eyelet's, Malacca shaft and a metal ferrule-OL 34" H 2" x 1"

\$500-\$1000

221. IVORY DAY CANE

Circa 1790-Silver collar, massive Malacca shaft and 3" horn ferrule-OL 34 ½" H 3 ¾" x 2" x 1"

\$600-\$1200





222. CARVED IVORY

Victorian-Woven metal collar, some minor damage, oak shaft and brass ferrule-OL 34 1/4" H 5" x 2 1/2"

— \$100-\$200



223. IVORY AND LUCITE

Circa 1920-Signed ornate sterling collar, exotic wood shaft and a horn ferrule-OL 34 1/2" H 4 1/2" x 2"

— \$200-\$300



224. SILVER DRESS

Circa 1925-Signed sterling collar, hardwood shaft and bi-metal ferrule-OL 34 1/2" H 3/4" x 1"

— \$100-\$200

225. GOLD DRESS

Dated 1881-Ornate gold filled handle, in need of some dent repair, hardwood shaft, metal ferrule-OL 33 1/2" H 1 1/2" x 1"

— \$100-\$200



226. IVORY KNOB

Circa 1920-Silver collar, hardwood shaft and missing ferrule-OL 34 1/2" H 1 1/2" x 1"

— \$100-\$300



228. IVORY DRESS

Victorian-A 50th birthday presentation, ornate gold collar, ivory and rosewood shaft, 6" ivory ferrule-OL 36" H 4 1/2" x 1"

— \$300-\$500



227. SUNDAY STICK

Early 20th Century-Large silver collar, ivory face plate, walnut club head, partridge wood shaft and a metal ferrule-OL 36" H 3" x 2 1/2"

— \$400-\$800



229. IVORY SYSTEM STICK

Late 19th Century-An ivory knob with compass, silver collar with fox, massive Malacca shaft and a metal ferrule-OL 33 ½" H 1 ½" x 1 ½"

— \$400-\$800

SILVER DRESS 230.

Early 20th Century-Signed 800 silver, ebony shaft and a brass ferrule-OL 35 ½" H 2" x 2 ½"

— \$300-\$500



231. SPRING HILT SWORD

Dated 1890-Hallmarked silver knob with presentation, ornate, etched 28" blade, engraved spring hilt which is working fine, massive Malacca shaft and bone ferrule-OL 37" H 1 ½" x 2"

— \$1500-\$2500



233. STAG SWORD

Mid 19th Century-Four-sided 22" blade signed "Solingen", stag handle with brass cartouche, hardwood shaft, handle not interlocking with shaft and no ferrule-OL 35 ½" H 1" x 2"

— \$400-\$600



232. HORN DAGGER

Circa 1925-The handle unscrews to find an 1 ½" three-sided dagger, a metal collar, ebonized shaft and metal ferrule-OL 36" H 5" x 3"

\$400-\$600



234. TIFFANY SYSTEM STICK

Early 20th Century-Signed Tiffany and Company 18085 makers, a sterling collar, a hollow sterling handle which doubles as an original sterling gadget Tiffany shaving brush, Malacca shaft and a bi-metal ferrule-OL 35 ½" H 3" x 1"

\$800-\$1200



236. PIPE SYSTEM STICK

Circa 1900-Copper collar, hardwood shaft and a metal ferrule-OL 36" H 1" x 2"

\$300-\$400



235. TOOL KIT SYSTEM STICK

Early 20th Century-A handle which unscrews and holds various commonly used tools, large brass collar, painted natural shaft and a brass ferrule-OL 33" H 4" x 1 ¼"

\$400-\$600



237.

DAGGER SYSTEM STICK

Mid 20th Century-A carved horn handle which is attached to a 6" dagger, octagonal hardwood shaft, 6" ferrule which is pulled out to expose a 18" blade-OL 36" H 5" x 1"

\$300-\$500



238. CARVED INSECT

Circa 1925-A carved and burned shaft with various insects, ivory knob with inked eye and an ivory ferrule-OL 36"

\$300-\$400





239. TRENCH ART

WW II-Handle is a 20mm shell casing, carved snake with green glass eyes, and a 10" shell casing ferrule-OL 36"

\$300-\$500

240. SYSTEM STICK MAP

Circa 1940-American Legior Boston Map cane with a rubber stopper ferrule-OL 35"

\$200-\$400



241.

ANTLER SWORD CANE

Circa 1880-Stag handle, silver collar, gold separator, two-sided 15" blade and a metal ferrule-OL 34"

H 1 1/2" x 4"

\$400-\$600



242. FISHING POLE SYSTEM STICK

Mid 20th Century-A Japanese carved 3-piece telescoping bamboo fishing pole which extends to 7 feet-OL 36 1/2"

\$200-\$300



243. SWORD CANE

Late 19th Century-A signed but unreadable 14" two-sided blade, metal collar, maple shaft with 4 inlaid stars and some splitting and a metal ferrule-OL 38 1/2" H 5" x 1 1/2"

\$500-\$800



244. STOOL SYSTEM STICK

Circa 1880-A three-piece walnut system stick which converts to a stool with metal ferrule-OL 36 1/2"

\$300-\$500



245. IVORY OPIUM PIPE

19th Century-A prime example with metal collar, bamboo shaft, brass pipe and ivory and brass ferrule-OL 36 ½" H 8 ½" x 1"

— \$800-\$1200

248. TWO GOLD DANDY CANES

Victorian-Petite gold-filled handles, nice period shafts and bi-metal ferrules-OL 35"

— \$200-\$400



250. GOLD DRESS

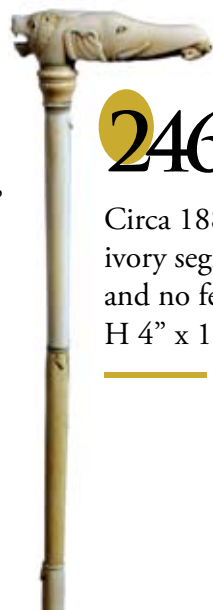
Circa 1900-Ornate gold-filled handle, ebony shaft and metal ferrule-OL 34" H 1 ½" x 1"

— \$100-\$200

251. GOLD DRESS

Circa 1920-A captain presentation, ebony shaft and a bi-metal ferrule-OL 35 ½"

H 1 ½" x 2" — \$200-\$300



246. IVORY LION AND ELEPHANT

Circa 1880-A full ivory segmented shaft and no ferrule-OL 36" H 4" x 1"

— \$500-\$1000



247. DAMASCENE DRESS

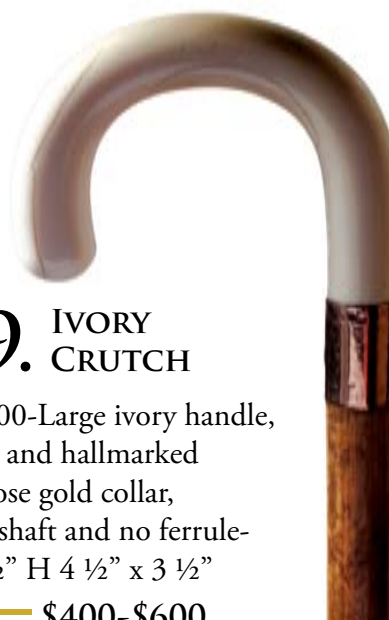
Circa 1900-Pistol grip handle, ebonized shaft and a metal ferrule-OL 36" H 2 ½" x 3"

— \$300-\$500

249. IVORY CRUTCH

Circa 1900-Large ivory handle, engraved and hallmarked French rose gold collar, Malacca shaft and no ferrule-OL 34 ½" H 4 ½" x 3 ½"

— \$400-\$600



252. GOLD PRESENTATION

Circa 1900-Hallmarked gold-filled, ebony shaft and bi-metal ferrule-OL 36 ½" H 1 ½" x 2"

— \$200-\$250



253. GOLD DRESS

Circa 1900-Gold-filled handle, rich Malacca shaft and a bi-metal ferrule-OL 35" H 1" x 1 ½"

— \$100-\$200



254. SYSTEM STICK

Circa 1930-Bamboo shooting stool, brass fittings, English registry marks, and a brass ferrule-OL 37"

— \$300-\$400

255. STAG TIGER

Circa 1880-Two-color glass eyes, ornate signed sterling collar, tree branch shaft and a bi-metal ferrule-OL 34 ½" H 1" x 4"

— \$300-\$500



256. IVORY TOOTH CANE

Circa 1890-Solid silver collar, twig spur shaft and a bi-metal ferrule OL 35 ½" H 5" x 1 ½"

— \$300-\$500



257. ASIAN MIXED METAL

1890-Silver birds, fruits and plants, applied to bronze handle, simulated snakewood shaft and a bi-metal ferrule-OL 34 ½" H 1" x 2"

— \$300-\$500





258. MAKILLA

Early 20th Century-Horn handle, signed collar, woven leather handle, ornate brass mountings to pikes, exotic wood shaft and a highly engraved and signed ferrule-OL 36 1/2"

\$400-\$800



260. SILVERPLATE DRESS

Victorian-Unsigned silver handle, interesting inlaid shaft and a bi-metal ferrule-OL 34 1/2" H 2" x 1"

\$200-\$300



259. BLUDGEON CANE

Early 20th Century-A very heavy casting of what appears to be a pope for the handle, hardwood shaft and no ferrule-OL 33 1/2" H 1 1/2" x 2 1/4"

\$200-\$300



261. IVORY DRESS

Circa 1900-An ivory knob attached to a carved ebony shaft with shamrocks and other plants, and a bi-metal ferrule-OL 35" H 1 1/2" x 1 1/2"

\$200-\$400



262. CHINESE CLOISINNE

Late 19th Century-Flexible, carved shaft and a bi-metal ferrule-OL 36" H 3 1/2" x 1"

\$300-\$500





263. WHALE'S TOOTH

Circa 1880-Metal collar, twig spur shaft and a bi-metal ferrule-OL 35" H 4 1/2" x 1 1/4"

\$400-\$600



264. SILVER DRESS

Circa 1920-Very well carved ebony shaft and a metal ferrule-OL 36 1/4" H 2" x 1 1/2"

\$200-\$400



266. GOLD DRESS

Circa 1890-Signed gold-filled handle, ebony shaft and a bi-metal ferrule-OL 34 1/2" H 1 1/2" x 1/2"

\$200-\$300



265. GOLD DRESS

Circa 1893-Large ornate gold-filled handle, massive ebony shaft and a bi-metal ferrule-OL 35 1/2" H 2" x 1 3/4"

\$200-\$300



267. SILVER DRESS

Circa 1890-Malacca shaft and a bi-metal ferrule-OL 35" H 2" x 1 1/2"

\$100-\$200



268. STERLING DRESS

Circa 1900-Large ebony shaft and metal ferrule-OL 35" H 2 1/4" x 1 1/4"

\$100-\$200

269. ASIAN SILVER

Circa 1880-The handle depicts 4 Asian people in robes in a home setting, Malacca shaft, metal ferrule-OL 33" H 2" x 1"

\$300-\$500





270. IVORY DEFENSIVE CANE

Circa 1860-A segmented ivory and horn shaft with a heavy lead pommel and a lead ferrule-OL 33 ½"

\$300-\$500



271. SILVER DRESS

Circa 1880-Engraved with ships, sale boats and wind mills and signed sterling, mahogany shaft and a bi-metal ferrule-OL 36 ½" H 2" x 1"

\$200-\$400



272. SILVER LION DRESS

Circa 1890-A massive hammered silver handle with a cartouche of a bearded lion, tree branch with bark shaft and a bi-metal ferrule-OL 32" H 3 ¼" x 2"

\$200-\$300



273. MAKILLA

Circa 1930-Horn handle, woven leather handle, tree trunk shaft and an ornate brass ferrule-OL 35"

\$400-\$600



274. IVORY MAN

Circa 1920-Carved ivory man attached poorly to an ebony shaft and a missing ferrule-OL 34" H 2" x 1 ¼"

\$300-\$400



275. JAPANESE DRESS

Circa 1900-A one-piece lacquered and decorated Asian cane with no ferrule-OL 35 ½"

\$200-\$400





276. SILVER DRESS

Circa 1840-Hand engraved handle with a triangular cartouche which contains the sun with a face, exotic wood shaft and 3" silver ferrule-OL 32" H 2 ¼" x 1"

— \$500-\$800



277. 14KT PRESENTATION

Circa 1890-Handle is signed 14K2, hardwood shaft and a bi-metal ferrule-OL 37" H 2 ½" x 1 ½"

— \$500-\$700

278. MIXED METAL BIRD

Circa 1890-An unusual exotic bird done in the Japanese style, bamboo shaft and a metal ferrule-OL 35" H 3 ½" x 1"

— \$200-\$400



279. STERLING DRESS

Circa 1880-A signed sterling handle with two beetles crawling, natural shaft and a metal ferrule-OL 32" H 3" x 1"

— \$200-\$400



280.

TIFFANY AND CO. 18KT GOLD DRESS

Circa 1930- A very fine and heavy 18kt gold handle which screws to an exotic wood shaft with a safekeeping place within the handle. The gold is signed Tiffany and Co. with registry marks and stamped 18kt.. A unique and noticeable hand hammered effect is the texture of the gold. This almost mint cane has a horn ferrule. OL-36" H- 2" x 1"

\$1000-\$1500



*CIRCA 1930 Tiffany and Co.
18kt Gold Dress*



281. DEFENSIVE CANE

Circa 1890-A French silver over copper weighted defensive stick, copper collar, hardwood shaft and no ferrule-OL 35" H 3" x 2"

— \$300-\$500



282. IVORY DOG

Circa 1900-An ivory dog with two-color glass eyes, pewter handle and exotic wood shaft and no ferrule-OL 34 1/2" H 4 1/4" x 2 1/2"

— \$300-\$500



283. BONE DRESS

Circa 1900-Hallmarked and engraved silver collar, exotic wood shaft and a bone ferrule-OL 35 1/2" H 4 1/2" x 1"

— \$200-\$400



284. SILVER DRESS

Circa 1920-Signed silver handle, exotic wood shaft and a bi-metal ferrule-OL 36" H 4" x 2"

— \$200-\$300



285. SILVER DRESS

Circa 1850-Exotic wood shaft and metal ferrule-OL 35" H 2 1/4" x 2"

— \$200-\$300



286. IVORY LION

Circa 1900-Signed Wilson. Paris, ebony shaft and horn ferrule-OL 36 ½" H 4" x 2"

\$500-\$1000

287. IVORY PHYSICIAN'S CANE

Silver collar, inscribed medical symbol on end of handle, ebony shaft and a horn ferrule-OL 35 ¾" H 2 ½" x 1"

\$400-\$600



288. EROTIC IVORY

19th Century-A massive carving of a topless and bottomless maiden riding a serpent, hallmarked silver collar, bamboo shaft and a copper ferrule-OL 36" H 5" x 2"

\$1500-\$2500

289.

WALNUT 29 HOLE CONTEMPORARY CANE STAND ON CASTERS

H 32" W 25" D 13"

\$300-\$400



290. RARE RESTORED
MASSIVE OAK CURVED
GLASS CANE CASE

Etched "Charles Lawrence and Company, Est. 1882, Canes-Swords-Umbrellas and Cigars". The case has a 112 section double grid. It is opened in the front by using a cast iron handle. This wonderful case has frontal scroll work and casters-

H 48" W 48" D 28 ½"

————— \$5000-\$8000





291. OAK CURVED GLASS CANE CASE

Circa 1880-An unrestored curved glass case with a single grid for 60 canes-H 48" W 48"- D 26"

— \$1500-\$3000

292. OAK BARLEY TWIST STAND

Circa 1900-A restored cane or umbrella stand which retains its original copper drip pans-H 31" W 36" D 12"

— \$500-\$800



293. ARTS AND CRAFTS OAK CANE STAND

Circa 1920-A hexagonal original stand with original paint decoration-H 27" D 10"

— \$300-\$500



294. IVORY KNOB

Circa 1800-Massive knob, faux collar, pewter eyelets, massive stepped oak shaft and a 3" brass ferrule-OL 36" H 1 3/4" x 1 3/4"

— \$800-\$1200



295. SING SING IVORY

Mid 18th Century-Ivory knob with an ornate silver collar, silver eyelets, inscribed "Col. Snowden Sing Sing" on stepped bamboo shaft and a 3" brass ferrule-OL 35 7/8" H 1" x 1 1/4"

— \$400-\$800



297. NAUTICAL IVORY

Fist-Circa 1860-Large carved fist, Massive ebony shaft and an ivory ferrule-OL 36" H 3" x 1/2"

— \$600-\$1200



296. IVORY JOCKEY

Circa 1920-A dyed ivory monkey head with silver glasses and silver teeth, British hallmarked two button collar, stepped partridge wood shaft and an ivory ferrule-OL 36" H 2" x 2"

— \$700-\$1200



298. IVORY NAUTICAL KNOB

Circa 1800-Inlaid abalone disk, silver collar, silver eyelets, rich Malacca shaft and a 3 1/2" brass ferrule-OL 36" H 1 1/2" x 1 1/2"

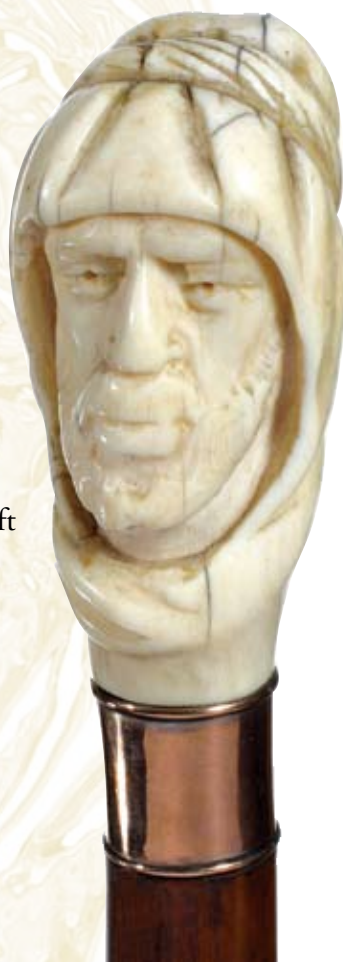
\$700-\$1200

IVORY HOODED MAN

299.

Circa 1830-Rose gold collar, natural bamboo shaft and a 3 1/2" ferrule-OL 33 1/2" H 2" x 1 3/8"

\$500-\$1000



300. CLINCHED IVORY FIST

Circa 1860-A nautical massive carved fist, inlaid collar, oak shaft and an ivory ferrule-OL 36" H 2 3/4" x 2"

\$600-\$1200