

Kimball M. Sterling Inc. TFL-1915



Antique Cane Auction-11 EasternTime

Saturday - October 15, 2016

Antique Cane Auction-11 EasternTime



1. Stag Dress Cane- Ca. 1890- A well carved handle with

USD 200 - 300

1. Stag Dress Cane- Ca. 1890- A well carved handle with original patina, coin silver collar, mallaca shaft and a metal ferrule. H.- 4 ¾ x 2 ½" O.L. 34 ½" \$200-300



2. Two Early Stag Canes- Ca. 1850- Two stag handle

USD 200 - 300

2. Two Early Stag Canes- Ca. 1850- Two stag handle country canes, one with a twigs spur shaft and the other with a hardwood shaft, one with ferrule, one without. H.-4 x 2 ½" and 3 ½ x 2 ¾" A.L.- 34" \$200-300



3. Walrus Dress Cane- Ca. 1880- A carved walrus tusk

USD 300 - 500

3. Walrus Dress Cane- Ca. 1880- A carved walrus tusk with a whimsical face of a man in a sleeping cap and his tongue extended, ornate gold filled collar, exotic snakewood shaft and a metal ferrule. H.- 3 ½ x 2 ½" \$300-\$500



4. Two country Canes- Ca. 1900- A pair of country

USD 150 - 250

4. Two country Canes- Ca. 1900- A pair of country canes, one with a horn handle and the other with a stag handle, one with a ferrule and one without. H. 5 x 7 ½" and 4 ½ x 1 ½" A.L.- 35 ¾" \$150-\$250



5. Nautical Tooth and Bone Cane- A carved whale's tooth

USD 800 - 1,200

5. Nautical Tooth and Bone Cane- A carved whale's tooth with a wooden spacer, baleen collar, ¾" whale bone shaft with is hexagonal to cylindrical and no ferrule. H. - 5" x 1 ¾" O.L. 36 ½" \$800-\$1,200



6. Harmonica Cane- Late 19th Century- A working wooden

USD 700 - 1,000

6. Harmonica Cane- Late 19th Century- A working wooden harmonica cane with a silver disc atop which is monogrammed, silver collar, thick ebony shaft and a brass ferrule. H.- 5 ¼ x 1 ¾" O.L.- 36 ½" \$700-\$1,000



7. Nautical Whale Cane- Ca. 1860- A nice tooth handle

USD 700 - 1,200

7. Nautical Whale Cane- Ca. 1860- A nice tooth handle with various types of inlaid wood as spacers and collars, bone shaft ¾" and a metal ferrule. H.- 3 ½ x 3 ½" O.L.- 34 ½" \$700-\$1,200



8. Camel Bone Dress Cane- Ca. 1925- A carved bone

USD 100 - 200

8. Camel Bone Dress Cane- Ca. 1925- A carved bone handle, chip carved wood shaft and never had a ferrule. H. 4 ½" x 1 ¼" O.L.- 34 ½" \$100-\$200

Antique Cane Auction-11 EasternTime



9. Nautical Whale Dress Cane- Ca. 1860- A pommel tooth

USD 700 - 1,200

9. Nautical Whale Dress Cane- Ca. 1860- A pommel tooth handle, inscribed "Captin Snow" coin silver collar, $\frac{3}{4}$ " bone shaft and no ferrule. H.- 1 $\frac{1}{2}$ x 1 $\frac{1}{2}$ " O.L.- 32 $\frac{1}{2}$ " \$700-\$1200



10. Wild Boar Tusk Cane- Ca. 1880- A carved wild boar

USD 400 - 600

10. Wild Boar Tusk Cane- Ca. 1880- A carved wild boar tusk in the shape of a bird with two color glass eyes, ornate silver metal collar, hard vine shaft and a metal ferrule. H.- 5 $\frac{1}{2}$ x 5" O.L.- 36 $\frac{1}{2}$ " \$400-\$600



11. Stag Dress Cane- Ca. 1840- A natural stag handle

USD 200 - 300

11. Stag Dress Cane- Ca. 1840- A natural stag handle with original patina, silver metal collar, thick malacca shaft and a 3" brass ferrule. 4 $\frac{1}{2}$ x 2 $\frac{1}{4}$ " O.L.- 34 $\frac{1}{2}$ " \$200-\$300.



12. Stag Antler Fox Cane- Ca. 1900- A carved fox with

USD 400 - 600

12. Stag Antler Fox Cane- Ca. 1900- A carved fox with two color glass eyes, various bone and stag rings, exotic wood shaft and a metal ferrule. H.- 3 $\frac{1}{2}$ x 3 $\frac{3}{4}$ " O.L.- 35" \$400-\$600



13. Three Horn Canes- Ca. 1920- A German horn handle,

USD 250 - 350

13. Three Horn Canes- Ca. 1920- A German horn handle, silver metal collar, stepped hardwood shaft, unscrews in the center to fold the cane for packing and baggage and a metal ferrule, and a pair of segmented horn dress canes, both with ferrules. H.- 4 x 2 $\frac{3}{4}$ ", 1 x 1 $\frac{3}{4}$ ", 4 $\frac{3}{4}$ x 2 $\frac{1}{2}$ " and A.L.- 31 $\frac{3}{5}$ " \$250-\$350



14. Stag Gun Cane- Ca. 1885- A Dumonthier shotgun cane

USD 900 - 1,200

14. Stag Gun Cane- Ca. 1885- A Dumonthier shotgun cane with a stag handle, approximately a .410 caliber silver metal collar, malacca shaft and a silver metal ferrule. H.- 4 $\frac{1}{2}$ x 2" O.L.-33" \$900-\$1,200.



15. Pair of Vertebrae Canes- Early 20th Century- Both

USD 200 - 300

15. Pair of Vertebrae Canes- Early 20th Century- Both with ferrules. A.L. 33 $\frac{1}{2}$ "



16. Narwhal Nautical Cane- Ca. 1860- A whale's tooth

USD 4,000 - 5,000

16. Narwhal Nautical Cane- Ca. 1860- A whale's tooth handle with a tortoise disc atop, thick Narwhal shaft (Monodon Monoceros) and a 2" steel ferrule. H.- 3 $\frac{3}{4}$ x 2" O.L.- 37 $\frac{1}{2}$ " \$4,000-\$5,000 This item cannot be shipped to New Jersey.

Antique Cane Auction-11 EasternTime



17. U.S.S. Constitution Cane- Ca. 1909- A historical

USD 800 - 1,200

17. U.S.S. Constitution Cane- Ca. 1909- A historical stag handle cane which is inscribed as being from the flag ship Constitution in 1875, mahogany wood from the boat makes the shaft and a 2" steel ferrule. H.- 5 ½ x 3" O.L.- 35" \$800-\$1200.



18. Stag Fist Cane- Early 20th Century- A carved stag

USD 250 - 400

18. Stag Fist Cane- Early 20th Century- A carved stag fist, a walnut spiral carved shaft and a brass ferrule. H.- 2 ¼ x 2" O.L.- 34" \$250-\$400



19. Children's Cane Collection- Ca. 1900-1930- Five

USD 350 - 650

19. Children's Cane Collection- Ca. 1900-1930- Five various handles including a bone fish, horn dog, stag and wood, four have ferrules. A.L.- 24.3" \$350-\$650



20. Horn Hiking Stick- Ca. 1920- A horn handle, goat

USD 100 - 200

20. Horn Hiking Stick- Ca. 1920- A horn handle, goat hoof and hair collar, hardwood shaft and a 1" pike ferrule. H.- 3 ½" x 6 ½" O.L.- 36" \$100-\$200



21. Horn Dress Cane- Ca. 1930- A segmented black horn

USD 125 - 250

21. Horn Dress Cane- Ca. 1930- A segmented black horn cane with a brass collar and brass ferrule. H.- 5 ½ x 2 ¾" O.L.- 35 ½" \$125- \$250



22. Soldier Portrait Cane- 20th Century- A cast resin

USD 150 - 250

22. Soldier Portrait Cane- 20th Century- A cast resin handle of a soldier in full headdress, push dagger with a 3" blade, three piece segmented hardwood shaft, no ferrule. H.- 4 x 1 ½" O.L.- 35" \$150-\$250



23. Two Bone Canes- 20th Century- A.L.- 35" \$150-\$250

USD 150 - 250

23. Two Bone Canes- 20th Century- A.L.- 35" \$150-\$250



24. A Pair of Country Canes- Ca. 1920- One with horn

USD 100 - 200

24. A Pair of Country Canes- Ca. 1920- One with horn handle silver collar, twigspur shaft and a metal ferrule, the other modified pistol grip and horn ferrule. H.- 6 x 2 ¼" and 4 ¾ x 1 ¾" A.L.- 34 ¾" \$100-\$200

Antique Cane Auction-11 EasternTime



25. Hands On Sword Cane- Ca. 1930- A silver plated high

USD 600 - 900

25. Hands On Sword Cane- Ca. 1930- A silver plated high relief casting, well figured exotic wood shaft, horn ferrule, 11" four-sided blade with push and pull mechanism. H.- 3" x 1 1/2" O.L.- 35" \$600-\$900.



26. Horn Dress Cane- Ca. 1850- A pistol grip horn

USD 700 - 1,000

26. Horn Dress Cane- Ca. 1850- A pistol grip horn handle with a brass push button, double ornate silver collar, malacca shaft, copper ferrule, 21" two-sided, etched blade with push button mechanism. H- 4 1/2" x 2" O.L.-34" \$700-\$1,000



27. Asian Dress Sword Cane- Ca. 1880- A high relief

USD 800 - 1,200

27. Asian Dress Sword Cane- Ca. 1880- A high relief silver metal handle with various flowers and leaves, entire handle and shaft is wrapped with a handmade tapestry fabric which appears to have silver, gold and copper threads, the tapestry also has various blooming flowers, copper ferrule, 25 1/2" two-sided blade with push/pull mechanism. H.- 6 1/2" x 1 3/4" O.L.- 34 1/4" \$800-\$1,200.



28. Gold Quartz Dress Cane- Dated 1867- A prime example

USD 6,000 - 8,000

28. Gold Quartz Dress Cane- Dated 1867- A prime example of a gold quartz cane with a hand worked gold handle, quartz is heavy with gold, the side panel of the handle is inscribed "Frank Tillman" and another is inscribed "March 14, 1867", nice original cane with great goldsmithing, half bark malacca shaft and a metal ferrule, H- 2 1/2" x 1 1/4" O.L.- 34" \$6,000-\$8,000



29: Five Folk Art Canes

USD 300 - 600

Early 20th Century- A group of five folk art canes including snakes, nudes and shoes. A.L.- 35" \$300-\$500 LOT COMING



30: Nautical Bone Cane

USD 300 - 600

Ca. 1870- A seal pup or dog carved from a tooth, small silver collar, 1/2" crosshatched whale bone shaft and a metal ferrule. H.- 2 x 2" O.L.- 35" \$500-\$700



31. Sterling Fish and Mermaid Cane- 20th Century- A

USD 2,000 - 2,500

31. Sterling Fish and Mermaid Cane- 20th Century- A massive sterling handle with a large sea serpent with two color glass eyes atop, a frontal nude mermaid in high relief with flowing hair, thick snakewood shaft and a brass ferrule. H.- 5 x 4 1/2" O.L. 36" \$2,000-\$2,500



32. Makilla Defensive Cane- Late 19th Century- An

USD 400 - 500

32. Makilla Defensive Cane- Late 19th Century- An original horn handle cane with a gut wrapped handle which unscrews to show a 1/2" pike, natural grown hardwood shaft with various natural designs, 4 1/2" brass ferrule with a pike tip. H.- H.- 8 1/2 x 1 1/4" O.L.- 34 3/4" \$400-\$500

Antique Cane Auction-11 EasternTime



33. Stag Thumb Cane- 20th Century- A unique carved stag

USD 600 - 800

33. Stag Thumb Cane- 20th Century- A unique carved stag handle with various skulls and creepy faces with snakes, ornate silver-plate collar, exotic hardwood shaft and 3" bras ferrule. H.- 6 x 3 1/2" O.L.- 47 1/2" \$600-\$800



34. Ebony Nude Dress Cane- 20th Century- A full frontal

USD 750 - 850

34. Ebony Nude Dress Cane- 20th Century- A full frontal carved nude handle, ornate signed sterling collar, thick ebony shaft and a metal ferrule. H.- 6 x 3" O.L.- 36" \$750-\$850



35. Stag Skull Cane- 20th Century- A carved stag handle

USD 500 - 700

35. Stag Skull Cane- 20th Century- A carved stag handle with a skull wrapped in a shroud, signed sterling collar, thick ebony shaft and stag ferrule. H.-2 x 4 1/4" O.L.- 36" \$500-\$700



36. Erotic Sword Cane- 20th Century- A heavy cast

USD 1,000 - 1,300

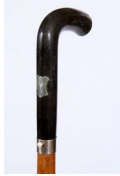
36. Erotic Sword Cane- 20th Century- A heavy cast silver handle of a lady in a sensual pose which is signed 840 silver, 24" foil blade, push and pull mechanism, ebony shaft and a metal ferrule. H.- 4 x 3 1/4" O.L.- 34 1/4" \$1,000-\$1,300



37. Stag Alligator Cane- 20th Century- A massive carved

USD 700 - 900

37. Stag Alligator Cane- 20th Century- A massive carved elk antler with a full length alligator, paint has been applied to the surface of the carving, ornate silver-plate collar, orangewood shaft with a full length gator carved on the front, metal ferrule. H.- 6 x 3 1/4" O.L.- 37" \$700-\$900



38. Horn Sword Cane- Ca. 1870- An American buffalo coin

USD 750 - 900

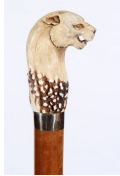
38. Horn Sword Cane- Ca. 1870- An American buffalo coin handle with blank silver cartouche, push button lock mechanism in working condition with a 12" four-sided blade, stepped malacca shaft and an iron pike ferrule. \$750-900



39. Gold Quartz Dress Cane- Ca. 1870- A high relief 14

USD 1,500 - 1,800

39. Gold Quartz Dress Cane- Ca. 1870- A high relief 14 kt. overlaid handle with a well figured gold quartz stone inset to the endcap, ebony shaft and a metal ferrule. H.- 3 1/2 x 2" O.L.- 36" \$1,500-\$1,800



40. Stag Tiger Cane- 20th Century- A nicely carved

USD 450 - 600

40. Stag Tiger Cane- 20th Century- A nicely carved tiger dress cane, signed sterling collar, thick malacca shaft and a stag ferrule. H.- 4 1/4 x 2 1/2" O.L.- 36" \$450-\$600

Antique Cane Auction-11 EasternTime



41. Walrus Horse Cane- Early 20th Century- A carved

USD 1,000 - 1,200

41. Walrus Horse Cane- Early 20th Century- A carved walrus horse in high relief with two color glass eyes, silver metal collar, thick exotic wood shaft and a metal ferrule. H.- 4 ½ x 2 ½" O.L.- 37" \$1,000-\$1,200



42. 10 Kt Dress Cane- Ca. 1940- A nice gold handle

USD 500 - 600

42. 10 Kt Dress Cane- Ca. 1940- A nice gold handle which is marked .375 with some maker's marks, ebony shaft and a metal ferrule. H.- 1 ½ x 2 ¼" O.L.- 36" \$500-\$600.



43. Wart Hog Carved Eve Dress Cane- 20th Century- A

USD 1,000 - 1,200

43. Wart Hog Carved Eve Dress Cane- 20th Century- A carved tusk of Eve with a snake wrapped around her and various skulls, signed sterling support collar, rich snakewood shaft and a brass ferrule. H.- 6 ¼" x 3 ¾" O.L.- 36 ¼" \$1,000-\$1,200



45. Silver Puti and Flower Cane- Ca. 20th Century- A

USD 1,300 - 1,500

45. Silver Puti and Flower Cane- Ca. 20th Century- A high relief casting which is signed sterling, which has two Puti figures and various high relief flowers, ebony shaft and a brass ferrule. H.- 7 x 1 ½" O.L.- 36" \$1,300-\$1,500.



46. Stag Mermaid and Neptune Cane- 20th Century- A

USD 800 - 1,000

46. Stag Mermaid and Neptune Cane- 20th Century- A carved stag antler with a full frontal topless mermaid being held up by Neptune, signed sterling collar, exotic wood shaft and stag ferrule. H.- 7 x 3 ¾" O.L.- 36" \$800-\$1,000



47. Asian Silver Dress Cane- Ca. 1890- A high relief

USD 350 - 450

47. Asian Silver Dress Cane- Ca. 1890- A high relief silver handle with a geisha girl with umbrella and blooming trees and bridges, exotic wood shaft and a horn ferrule. H.- 3 x 1 ½" O.L.- 35 ¾" \$350-\$450



48. Gold Dress Cane- Ca. 1900- A large gold

USD 300 - 400

48. Gold Dress Cane- Ca. 1900- A large gold presentation handle which is probably a 10 kt. overlay cane, ebonized shaft and a brass ferrule. H.- 2 ½ x 1 ¾" O.L.- 34 ½" \$300-\$400



49. Sterling Bulldog Cane- 20th Century- A massive

USD 600 - 800

49. Sterling Bulldog Cane- 20th Century- A massive signed sterling bulldog cane with two collar glass eyes, silver collar, thick malacca shaft and a brass ferrule. H.- 3 x 3 ½" O.L.- 36" \$600-\$800

Antique Cane Auction-11 EasternTime



50. Mexican Snake Cane- 20th Century- A nicely carved

USD 100 - 200

50. Mexican Snake Cane- 20th Century- A nicely carved high relief double snake cane which has been paint decorated, one piece hardwood shaft and brass ferrule. \$100-200



51. Whale's Tooth Eagle Cane- Ca. 1885- A carved

USD 800 - 1,000

51. Whale's Tooth Eagle Cane- Ca. 1885- A carved whale's tooth with exotic wood spacers, horn collar, hardwood shaft and a metal ferrule. H.- 3 x 4 3/4" O.L.- 35 1/2" \$800-\$1,000



52. Stag Skull Cane- 20th Century- A carved stag handle

USD 800 - 1,000

52. Stag Skull Cane- 20th Century- A carved stag handle with multiple skulls throughout signed sterling collar, thick snakewood shaft and a stag ferrule. H.- 1 3/4 x 1 1/4" O.L.- 36" \$800-\$1,000



53. Sterling Student's Cane- 20th Century- A massive

USD 800 - 1,000

53. Sterling Student's Cane- 20th Century- A massive sterling handle with a high relief cartouche which has been done in the German style, exotic wood shaft and brass ferrule. H.- 7 1/4" x 2 1/2" O.L.- 36" \$800-\$1,000



54. 14 Kt. Dress Cane- Dated 1906- An inscribed and

USD 350 - 450

54. 14 Kt. Dress Cane- Dated 1906- An inscribed and dated rose gold handle, probably due to length probably a ladies' cane, snakewood shaft and a metal ferrule. H.- 3/4 x 1" O.L.- 30" \$350-\$450



55. Walrus Alligator Cane- Ca. 1900- A high relief

USD 650 - 800

55. Walrus Alligator Cane- Ca. 1900- A high relief walrus alligator cane, ornate silver collar, exotic wood shaft and a brass ferrule. H.- 3 3/4 x 1 1/2" O.L.- 36" \$650-\$800



56. Japanese Monkey Cane- Ca. 1890- A carved stag

USD 400 - 500

56. Japanese Monkey Cane- Ca. 1890- A carved stag handle with a pair of monkeys, signed sterling collar, hardwood shaft and a metal ferrule. H.- 1 1/2 x 6" O.L.- 36" \$400-\$500



57. Horn Dress Cane- Ca. 1920- A one-piece all horn

USD 200 - 300

57. Horn Dress Cane- Ca. 1920- A one-piece all horn dress cane with no ferrule. O.L.- 35" \$200-\$300

Antique Cane Auction-11 EasternTime



58. Engine Chased Silver Cane- Ca. 1900- A beautiful

USD 250 - 350

58. Engine Chased Silver Cane- Ca. 1900- A beautiful silver metal handle, thick malacca shaft and a horn ferrule. H.- 1 ¼ x 2 ½" O.L. 35" \$250-350



59. Silver Horse Cane- Ca. 1890- A beautiful Art

USD 750 - 850

59. Silver Horse Cane- Ca. 1890- A beautiful Art Nouveau example of a signed .800 silver horse cane in fine condition, exotic wood shaft and a horn ferrule. H.- 4 ½" x 2 ½" O.L.- 35" \$750-\$850



60. Bull Dog Glove Holder Cane- Ca. 1890- A carved

USD 500 - 600

60. Bull Dog Glove Holder Cane- Ca. 1890- A carved bulldog cane with glass eyes and a moveable lower jaw, belt buckle upper collar with small rose cut stones, gold metal lower collar, thick malacca shaft and horn ferrule. H.- 2 x 2 ¾" O.L.-35" \$500-\$600



61: Nautical Bone Cane

USD 330 - 500

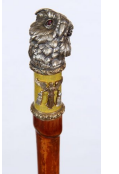
Ca. 1870- A diminutive whale tooth handle, small baleen spacer and hexagonal whale bone shaft. H.- 2 ½" x ½" O.L.- 29 ½" \$350-500



62. Folk Art Dog Cane- Ca. 1850- A one piece carved

USD 100 - 150

62. Folk Art Dog Cane- Ca. 1850- A one piece carved stylized dog, a pair of beaded glass eyes, two small brass eyelets, probably Hickory and a small glass ferrule. O.L.- 35 ½" \$100-\$150



63. Owl Dress Cane- Early 20th Century- An unusual

USD 1,000 - 1,500

63. Owl Dress Cane- Early 20th Century- An unusual high relief silver owl with glass eyes which is done in the Russian style, a pair of gold ornate collars, yellow enamel upper shaft with an angel holding two of what appears to be rose cut diamonds, this handle is surely out of a good Russian shop, stepped bamboo shaft and a metal ferrule. H.- 3 x 1 ½" O.L.- 35" \$1,000-\$1,500



64. Wood Fist Cane- Ca. 1900- A large carved fist

USD 100 - 150

64. Wood Fist Cane- Ca. 1900- A large carved fist attached to a hardwood shaft and no ferrule. H.- 3 x 2 ¼" O.L.- 33" \$100-\$150



65. Brass Telescope Cane- 20th Century- A four draw

USD 500 - 700

65. Brass Telescope Cane- 20th Century- A four draw brass telescope which is inscribed "Thomas J. Evans London," fine working condition with clear lenses, hardwood shaft and a brass ferrule. H.- 5 ½ x 2" O.L.- 36 ½" \$500-\$700

Antique Cane Auction-11 EasternTime



66. Hardstone Hound Cane- Ca. 1930- A carved green

USD 500 - 700

66. Hardstone Hound Cane- Ca. 1930- A carved green hardstone handle with two color glass eyes, signed sterling collar, thick ebony shaft and a brass ferrule. H.- 2 3/4 x 1 3/4" O.L.- 31 1/2" \$500-\$700



67. Stag Dragon Cane- Ca. 1900- A carved stag whimsical

USD 300 - 500

67. Stag Dragon Cane- Ca. 1900- A carved stag whimsical dragon with beaded eyes, ornate gold filled collar, stained bamboo shaft and a brass ferrule. H.- 2 1/4 x 1 1/4" O.L.- 35" \$300-\$500



68. Chamber of Commerce Dress Cane- Ca. 1900- A silver

USD 100 - 150

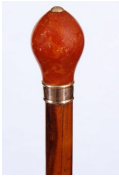
68. Chamber of Commerce Dress Cane- Ca. 1900- A silver handle which is inscribed "Chamber of Commerce," maple shaft and a horn ferrule. H.- 1 x 1 1/4" O.L.- 33" \$100-\$150



69. Bone and Horn Snake Cane- Ca. 1885- A carved bone

USD 300 - 400

69. Bone and Horn Snake Cane- Ca. 1885- A carved bone snake which is attached to a horn or baleen shaft and a stag ferrule. O.L.- 34" \$300-\$400



70. Brigg Dress Cane- Ca. 1900- A signed example with

USD 400 - 600

70. Brigg Dress Cane- Ca. 1900- A signed example with a stained burl handle with a rose gold cartouche atop, signed and hallmarked rose gold collar, exotic wood shaft and a metal ferrule. H.- 2 x 1 3/4" O.L.- 37" \$400-\$600



71. Folk Art Dog Cane- Ca. 1920- A beautiful carved

USD 400 - 600

71. Folk Art Dog Cane- Ca. 1920- A beautiful carved dog head with two color glass eyes, signed sterling collar, hardwood shaft and a stag ferrule. H.- 3 x 3 3/4" O.L.- 35 1/2" \$400-\$600



72. Folk Art Hound Dog Cane- Ca. 1890- A carved burl

USD 400 - 600

72. Folk Art Hound Dog Cane- Ca. 1890- A carved burl handle with a hound with two large floppy ears and a pair of glass eyes, four banded silver metal collar, exotic wood shaft and a horn ferrule. H.- 4 x 4 1/4" O.L.- 36 1/2" \$400-\$600



73. Stag Spaniel Cane- Ca. 1900- carved stag handle

USD 400 - 600

73. Stag Spaniel Cane- Ca. 1900- carved stag handle with the mother and her two pups, ornate gold filled collar and small gold metal lower collar, bamboo shaft and metal ferrule. H.- 5 1/2 x 2" O.L.- 37" \$400-\$600

Antique Cane Auction-11 EasternTime



74. Kaleidoscope Cane- 20th Century- A brass working

USD 200 - 450

74. Kaleidoscope Cane- 20th Century- A brass working kaleidoscope cane with original lenses, brass bracket and collar, ebonized shaft and brass ferrule. \$300-450



75. Whistle Cane- Early 20th Century- A signed "made in

USD 400 - 600

75. Whistle Cane- Early 20th Century- A signed "made in England" brass whistle cane used mostly for hailing a cab, brass collar, exotic wood shaft and a stag ferrule. H.- 4 1/2" x 1 1/2" \$400-\$600



76. Jimmy Carter Presidential Cane- Dated 1976- A cast,

USD 100 - 150

76. Jimmy Carter Presidential Cane- Dated 1976- A cast, metal handle which is inscribed, hardwood shaft and a stopper ferrule. H.- 5 1/2" x 1 1/2" O.L.- 33" \$100-150



77. Gold Dress Cane- Ca. 1920- An unsigned but 14 kt

USD 150 - 250

77. Gold Dress Cane- Ca. 1920- An unsigned but 14 kt square dress cane, which is signed "Sulke" ebony shaft and a horn ferrule. O.L.- 38" \$150-\$250



78. Horn Dress Cane- Ca. 1920- two color horn handle,

USD 300 - 400

78. Horn Dress Cane- Ca. 1920- two color horn handle, art deco silver metal collar, snakewood shaft and horn ferrule. H.- 4 x 3" O.L.- 36" \$300-\$400



79. Silver and Horn Dress Cane- Ca. 1885- A horn handle

USD 350 - 500

79. Silver and Horn Dress Cane- Ca. 1885- A horn handle with silver overlay and an ornate silver endcap, silver metal collar, hardwood shaft and horn ferrule. H.- 5 x 6" O.L.- 35 1/2" \$350-\$500



80. Niello Silver Dress Cane- Ca. 1920- A nice example

USD 150 - 250

80. Niello Silver Dress Cane- Ca. 1920- A nice example of this genre with a few small dings, hallmark silver collar, exotic wood shaft and horn ferrule. H.- 3" x 2" O.L.- 33" \$150-\$250



81. Telescope Dress Cane-Ca. 1900-An ornate silver

USD 300 - 500

81. Telescope Dress Cane-Ca. 1900-An ornate silver metal crook handle which has a 3" 2 draw brass telescope, ebonized shaft and a horn ferrule-H. 5" x 4 1/2", O.L. 35 1/2" \$300-500

Antique Cane Auction-11 EasternTime



82. Bludgeon Bronze Cane-Ca. 1900-A heavy bronze

USD 200 - 250

82. Bludgeon Bronze Cane-Ca. 1900-A heavy bronze casting with a smiling face, hardwood shaft and a metal ferrule-H. 2" x 1 3/4", O.L. 35", \$200-250



83. Cloisonné Dress Cane-Late 19th Century-A Chinese

USD 400 - 600

83. Cloisonné Dress Cane-Late 19th Century-A Chinese cloisonné handle with very vibrant and different colors, background is goldstone, copper cast flower atop, exotic wood shaft and a horn ferrule-H. 10" x 1 1/8", O.L. 37". \$400-600



84. Bulldog Cane-Ca. 1925-A carved bulldog with silver

USD 350 - 450

84. Bulldog Cane-Ca. 1925-A carved bulldog with silver overlaid ears and two color glass eyes, oak hardwood shaft and a horn ferrule-H. 5 3/4" x 4 1/2", O.L. 36", \$350-450



85. Folk-Art Man-Ca. 1885-A one piece carved cane,

USD 300 - 400

85. Folk-Art Man-Ca. 1885-A one piece carved cane, probably British, with a gentleman with two color glass eyes, exotic wood shaft and a horn ferrule-O.L. 33", \$300-400



86. Silver Dress Cane-Ca. 1890-An unmarked silver Art

USD 200 - 300

86. Silver Dress Cane-Ca. 1890-An unmarked silver Art Nouveau handle in nice condition, exotic wood shaft and a horn ferrule-H. 3 3/4" x 3 3/4", O.L. 34 1/2", \$200-300



87. Boxer/Bulldog Cane-Ca. 1900-A carved glove holder

USD 400 - 500

87. Boxer/Bulldog Cane-Ca. 1900-A carved glove holder cane with a spring mechanism in its lower jaw, only one glass eye, early painted collar, thick exotic wood shaft and a metal ferrule-H. 3 1/2" x 2 1/4", O.L. 36", \$400-500



88. Not a Dartmouth Indian Cane-Early 20th Century-A

USD 100 - 200

88. Not a Dartmouth Indian Cane-Early 20th Century-A carved Indian that looks much like the University cane but is not, chip carved hardwood shaft and no ferrule-O.L. 37", \$100-200



89: Samurai Sword Cane

USD 500 - 800

Samurai Sword Cane- Ca. 1900- A full bark sword cane, brass collar, 22" blade and no ferrule. H.- 1 1/4 x 6 1/2" O.L.- 34 1/2" \$500-800

Antique Cane Auction-11 EasternTime



90. Nautical Whale and Shell Cane- Ca. 1860-A whale

USD 500 - 700

90. Nautical Whale and Tortoise Cane- Ca. 1860-A whale tooth handle with two shell hexagonal spacers, hand worked silver metal collar, malacca shaft and a brass ferrule. H.- 4 ¾ x 2 ¾" O.L.- 32 ¼" 500-\$700



91. Hardstone Dress Cane- Ca. 1920- A pale green

USD 600 - 900

91. Hardstone Dress Cane- Ca. 1920- A pale green hardstone with rose gold-filled drapes and bands, rose gold crown collar, exotic wood shaft and a 2" horn ferrule. H.- 2 ½ x 1" O.L.- 39 ¼" \$600-\$900



92. Porcelain Dress Cane- Ca. 1870- A royal cobalt

USD 400 - 500

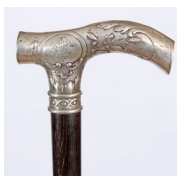
92. Porcelain Dress Cane- Ca. 1870- A royal cobalt porcelain dress cane with heavy moriage, hand painted flowers, ornate gold-filled collar, ebony shaft and brass ferrule. H.- 6 x 1" O.L.- 35 ¼" \$400-\$500



93. Bone Dress Cane- Ca. 1880- A two-piece bone handle

USD 250 - 350

93. Bone Dress Cane- Ca. 1880- A two-piece bone handle with the initials in high relief "F.K.", ornate carved leaf and berry collar, malacca shaft and metal ferrule. H.- 3 ¾ x 6" O.L.- 32" \$250-\$350



94. Silver Horse Dress Cane- Ca. 1890- A .800 silver

USD 400 - 600

94. Silver Horse Dress Cane- Ca. 1890- A .800 silver high relief handle with a horse and various foliage, handle is signed "K.W.", ebony shaft, no ferrule. H.- 2 1/8 x 4" O.L.- 37 ¾" \$400-\$600



95. Snow Scene Porcelain Cane- Late 19th Century- A

USD 250 - 350

95. Snow Scene Porcelain Cane- Late 19th Century- A hand painted farmhouse fence with trees and snow scene, heavy gold moriage work, ornate gold metal collar, ebony shaft and a bone ferrule. H.- 6 ½ x 1 ½" O.L.- 35 ½" \$250-\$350



96. Flick Stick Cane- 20th Century- A carved wooden man

USD 600 - 900

96. Flick Stick Cane- 20th Century- A carved wooden man in a top hat with a flick stick mechanism atop, the four sided blade is 8" long and is in fine working condition, silver metal collar, oak shaft and a steel ferrule, this cane has been reconditioned. H.- 2 ¾ x 1 ¾" O.L.- 36 ½" \$600-\$900

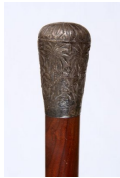


97. Alligator Dress Cane- Ca. 1900- A well cast full

USD 250 - 400

97. Alligator Dress Cane- Ca. 1900- A well cast full bodied alligator which was silver plated at one time, Spanish oak shaft and a metal ferrule. H.- 3 ¾ x 3" O.L.- 36" \$250-\$400

Antique Cane Auction-11 EasternTime



98. Silver Dress Cane- Late 19th Century- A high

USD 300 - 400

98. Silver Dress Cane- Late 19th Century- A high relief silver handle with animals and trees which is signed "E. Pointer, Queen Square. Bath.," thick exotic wood shaft and a horn ferrule. H.- 1 ½ x 2 ½" O.L.- 37 ¼" \$300-\$400



99. Cheroot System Cane- Ca. 1880- A bell bronze

USD 400 - 600

99. Cheroot System Cane- Ca. 1880- A bell bronze cheroot system cane which when packed with powder and touched with a cigar will fire, stepped partridge wood shaft and a bell bronze ferrule. H.- 2 ½ x 3" O.L.- 33 ½" \$400-\$500



100. Buggy Whip Cane- Ca. 1900- A nice example of the

USD 500 - 600

100. Buggy Whip Cane- Ca. 1900- A nice example of the Springfield, Ohio buggy whip container cane which when the top is removed you can double the size of the shaft for a long buggy whip, leather covered shaft and a metal ferrule. H.- 1 x 1 ¾" O.L.- 36" \$500-600



101. Gold Dress Cane- Dated 1882- A 14 kt solid gold

USD 400 - 600

101. Gold Dress Cane- Dated 1882- A 14 kt solid gold unmarked but tested top with an inscribed presentation to the owner, honey malacca shaft and a horn ferrule. H.- 1 ½ x 1" O.L.-35" \$400-\$600



102. Art Nouveau Dress Cane- Ca. 1890- .800 silver art

USD 300 - 400

102. Art Nouveau Dress Cane- Ca. 1890- .800 silver art nouveau handle which is hallmarked but unreadable in fine condition, flexible bamboo shaft and a copper ferrule. H.- 5 x 3 ½" O.L.- 36 ½" \$300-\$400



103. Toledo Dress Cane- Ca. 1890- A nice large handle

USD 350 - 500

103. Toledo Dress Cane- Ca. 1890- A nice large handle with plenty of gold in fine condition with minimal wear, exotic wood shaft and a metal bullet ferrule. H.- 4 ½ x 2 ¼" O.L.- 35 ¾" \$350-\$500



104. Japanese Butterfly/Moth Cane- Ca. 1890- An ornate

USD 600 - 900

104. Japanese Butterfly/Moth Cane- Ca. 1890- An ornate silver insect which is laid over horn, the horn can be viewed in six places, small silver metal collar, natural branch fruitwood shaft and metal ferrule. H.- 3 x 3 ¼" O.L.- 36 ¼" \$600-\$900



105: Presidential Hickory Cane

USD 300 - 500

Dated 1880-A Nashville presentation cane with a hickory shaft which was cut from a tree at the Hermitage, Andrew Jackson's home, presentation atop the silver handle and on three of the panels, 2" brass ferrule-H. 2" x 1 ¼", O.L. 34 ½" \$300-\$500

Antique Cane Auction-11 EasternTime



106. Black Forrest Bear Cane- Early 20th Century- A

USD 500 - 600

106. Black Forrest Bear Cane- Early 20th Century- A large Black Forrest carved bear with black glass eyes, in fine condition, natural branch shaft and a metal ferrule. H.- 4 x 4" O.L.- 35" \$500-\$600



107. Carved Walrus Tusk Alligator-Ca. 1900- A fully

USD 700 - 900

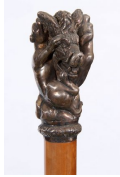
107. Carved Walrus Tusk Alligator-Ca. 1900- A fully carved gator out of walrus tusk, exotic wood shaft, pair of bone eyelets and a bone ferrule. H.- 4 ¼ x 2" O.L.- 37" \$700-\$900



108. Rose Gold Dress Cane- Ca. 1850- A high relief cast

USD 700 - 1,000

108. Rose Gold Dress Cane- Ca. 1850- A high relief cast rose gold handle which has various medieval scenes, attached rose gold collar, ebony shaft and a steel ferrule. H.- 2 ½ x 1 ¼" O.L.- 34 ½" \$700-\$1,000



109. Sterling Hound and Boar Cane- 20th Century- A

USD 600 - 900

109. Sterling Hound and Boar Cane- 20th Century- A large high relief carving of two hounds attacking a large wild boar, the handle is signed silver, these artistic handles were made in a limited edition from an original period carving, massive malacca shaft and a large brass ferrule. H.- 4 x 2 ¼" O.L.- 36" \$600-\$900



110. Silver Automated Tiger Cane- Ca. 1880-A high

USD 800 - 1,200

110. Silver Automated Tiger Cane- Ca. 1880-A high relief silver tiger with red glass eyes and movable lower jaw, with natural animal teeth, the lower jaw is spring loaded, this could have been used as fancy glove holder, handle is signed sterling with some unreadable numbers below, large wood collar, exotic wood stepped shaft and a metal ferrule. H.- 3 x 2 ¼" O.L.- 35 ¾" \$800-\$1,200



111. Damascene Dress Cane- Ca. 1890- Beautiful work

USD 400 - 500

111. Damascene Dress Cane- Ca. 1890- Beautiful work with three panels of birds and flowers, worked flower atop, hardwood shaft, no ferrule. H.- 1 ¼ x 1 ½" \$400-\$500



112. Horn Sword Cane- Ca. 1875- A twigs spur horn handle,

USD 600 - 900

112. Horn Sword Cane- Ca. 1875- A twigs spur horn handle, pair of ornate gold-filled collars, push and lock mechanism with a 26" blued and gold blade, natural twigs spur shaft and a brass ferrule. H.- 3 ¾ x 2" O.L.- 35 ¾" \$600-\$900



113. Wolf and Child Dress Cane- Ca. 1875- An ornate

USD 350 - 450

113. Wolf and Child Dress Cane- Ca. 1875- An ornate gold-filled handle with a hand painted porcelain sleeve of a small girl talking with a wolf, golf metal collar, ebony shaft and horn ferrule. H.- 5 x 3 ½" O.L.- 35 ½" \$350-\$450

Antique Cane Auction-11 EasternTime



114. Cigarette Holder System Cane- Ca. 1900- A Japanese

USD 200 - 400

114. Cigarette Holder System Cane- Ca. 1900- A Japanese made burl cigarette container cane for holding two small cigarettes, split bamboo shaft and a steel ferrule. H.- 1 ½ x ¾" O.L.- 34 ¾" \$200-\$400



115. Rare Telescope System Cane-Ca. 1865- A working one

USD 1,000 - 1,500

115. Rare Telescope System Cane-Ca. 1865- A working one draw telescope with a numbered lens cover and a monogram atop, telescope is 6 ½" and the hinge is working fine, large silver collar, honey malacca shaft and a metal ferrule. H.- 6 ½ x 1 ¼" O.L.- 33 ¾" \$1,000-\$1,500



116. Tiger-eye Dress Cane- Ca. 1925- A faceted 1 ½"

USD 300 - 400

116. Tiger-eye Dress Cane- Ca. 1925- A faceted 1 ½" tiger eye stone, pewter crown collar, inlayed exotic wood shaft and a brass ferrule. H.- 1 ½ x 1 ½" O.L.- 35 ¼" \$300-\$400



117. Double Sword Cane-Late 19th Century- An unusual

USD 700 - 800

117. Double Sword Cane-Late 19th Century- An unusual example which has a push and pull mechanism with two interior blades, one if 20" and the other 8", they both fit in opposite directions in the shaft with a push button mechanism, silver metal handle, natural branch shaft and a metal ferrule. H.- 2 ½ x 1 ¼" O.L.- 38" \$700-\$800



118. French Nude Stanhope Cane-Ca. 1890- A stag handle

USD 800 - 1,200

118. French Nude Stanhope Cane-Ca. 1890- A stag handle which contains a full frontal standing nude in good condition and very visible, brass collar, hardwood shaft and a metal ferrule. H.- 1 ½ x 3 ½" O.L.- 34 ½" \$800-\$1,200.



119: Art Nouveau Silver Cane

USD 500 - 600

Ca. 1890- A beautiful stylized and signed art nouveau silver handle in fine condition, exotic wood shaft and a horn ferrule. H.- 5 x 3" O.L.- 33" \$500-\$600



120. Horn Dress Cane-Ca. 1876- A horn handle with its'

USD 300 - 450

120. Horn Dress Cane-Ca. 1876- A horn handle with its' original patina, ornate silver collar which is hallmarked but unreadable, stepped exotic wood shaft and a brass ferrule. H.- 3 ¾ x 3 ¾" O.L.- 34 ¼" \$300-\$450



121. Dumonthier Gun Cane- Late 19th Century- American

USD 1,000 - 1,400

121. Dumonthier Gun Cane- Late 19th Century- American buffalo horn handle with twigspur decoration, signed shotgun mechanism, push button firing mechanism, malacca shaft, original removable ferrule. H.- 5 x 4" O.L.- 35 ¾" \$1,000-\$1,400

Antique Cane Auction-11 EasternTime



122. Bone Sword Cane- Ca. 1875- A two piece bone handle

USD 800 - 1,000

122. Bone Sword Cane- Ca. 1875- A two piece bone handle which is carved in high relief with a snake and a lion, push button working mechanism with a 24" blade, coin silver collar, malacca shaft and a brass ferrule. H.- 4 ¾ x 3 ¼" O.L.- 33 ½" 800-1,000



123. Anglo-Colonial Cane-Ca. 1880-Huge hardwood knob

USD 500 - 700

123. Anglo-Colonial Cane-Ca. 1880-Huge hardwood knob carved to depict the head of a wise man with laughing face, well knobbed kongo wood shaft with a metal collar and ferrule. A combination of size, quirky motif and untouched dark, age grown patina lend this cane a certain individuality of spirit.-H. 5 ½" x 3 ½", O.L. 37 ¾"-\$500-\$700



124. Silver Courting Cane- Ca. 1650-A high relief

USD 600 - 900

124. Silver Courting Cane- Ca. 1650-A high relief casting of a couple meeting, C scroll design which is typical of this era in Vienna marrying and cupid with his bow and arrow, later exotic wood shaft, small split to the silver handle where it meets the shaft and a metal ferrule. H. 1" x 7 ¾", O.L.-38 ¾", \$600-900



125. Stag horn Nude Cane - Ca. 1910- Frontal nude atop

USD 250 - 350

125. Stag horn Nude Cane - Ca. 1910- Frontal nude atop the waist, probably a slave representation from a bygone era, silver metal collar, oak shaft and a metal ferrule. H. 1 ¼" x 4" O.L.- 37 ½" \$250-350



126. Silver Lion Cane- Ca. 1890- A high relief silver

USD 300 - 400

126. Silver Lion Cane- Ca. 1890- A high relief silver lion with glass eyes, thick ebony shaft and a horn ferrule. \$300-\$400



127. Enamel Dress Cane-Ca. 1890- An enamel and copper

USD 150 - 200

127. Enamel Dress Cane-Ca. 1890- An enamel and copper handle with minor damage, hardwood shaft and a steel ferrule. \$150-200



128. Nautical Whale Bone Cane- Ca. 1860- A whale's

USD 600 - 1,000

128. Nautical Whale Bone Cane- Ca. 1860- A whale's tooth handle with a mother of pearl disc atop, hexagonal to round whale bone shaft, a pair of coin silver diamond shaped eyelets, inlaid mother of pearl on the ¾" shaft and no ferrule. \$600-\$1,000



129. Johnny Winter Rock and Roll Cane- Dated 1979- A

USD 400 - 600

129. Johnny Winter Rock and Roll Cane- Dated 1979- A one piece carved staff with copper nose and earrings signed "T-ACE", paint decorated throughout and a metal ferrule. This was an unpaid lot from the Johnny Winter Estate Auction. O.L.- 50" \$400-\$600

Antique Cane Auction-11 EasternTime



130. Johnny Winter Devil Rock and Roll

USD 400 - 600

130. Johnny Winter Devil Rock and Roll Cane- 20th Century- A fiercely carved devil figure with downward horns, pitchfork and flames carved on the shaft and a metal ferrule. This was an unpaid lot from the Johnny Winter Estate Auction . O.L.- 50" \$400-\$600



131. Dwight Eisenhower Character Cane- 20th Century- A

USD 200 - 400

131. Dwight Eisenhower Character Cane- 20th Century- A hand painted pottery head, modern maker of these canes are unknown to us, natural branch shaft and a pike ferrule. H.- 3 x 3 x 2 1/2" O.L.- 33 1/2" \$200-\$400.



132. Winston Churchill Character Cane- 20th Century- A

USD 200 - 400

132. Winston Churchill Character Cane- 20th Century- A hand painted pottery head, modern maker of these canes are unknown to us, natural branch shaft and a pike ferrule. H.- 3 x 2 1/2 x 2 1/4" O.L.- 34 1/2" \$200-\$400.



133. Toucan Bird Cane- 20th Century- A large carved

USD 300 - 400

133. Toucan Bird Cane- 20th Century- A large carved head with paint decoration and two color glass eyes, large silver metal collar, thick malacca shaft and brass ferrule. H.- 4 1/2" x 4 1/4" O.L.- 39" \$300-400



134. Silver Dress Cane- Ca. 1900- A large coin silver

USD 225 - 325

134. Silver Dress Cane- Ca. 1900- A large coin silver handle which is inscribed "E. Stewart Lewer", British hallmarked with the initials RS, massive malacca shaft and a brass ferrule. H.- 2 x 1 3/4" O.L.- 37 1/2" \$225-\$325



135. Tippler's Stick- Late 19th Century- A nice

USD 150 - 250

135. Tippler's Stick- Late 19th Century- A nice example of a tippler's stick which has its' original glass vile and cork, hardwood shaft and no ferrule. \$150-250



136. Stacked Leather Washer Cane- Early 20th Century- A

USD 100 - 200

136. Stacked Leather Washer Cane- Early 20th Century- A nice example of stacked leather washers with its' original patina, small copper disk atop and a brass ferrule. O.L.- 35" \$100-\$200



137. Hardstone Dress Cane-Ca. 1920- A spinach hardstone

USD 350 - 450

137. Hardstone Dress Cane-Ca. 1920- A spinach hardstone handle, ornate gold-filled collar, ebony shaft and a nice horn ferrule. H.- 3 1/4 x 1 1/4" O.L.- 39" \$350-450

Antique Cane Auction-11 EasternTime



138. Silver Dress Cane-Ca. 1920- A silver basket weave

USD 250 - 350

138. Silver Dress Cane-Ca. 1920- A silver basket weave handle with a small ding atop, plain incorporated collar, ebony shaft and a stopper ferrule. H.- 8 ½ x ¾" O.L.- 36 ¼" \$250-350



139. British Silver Crutch Cane-Ca. 1915- A perfect

USD 175 - 250

139. British Silver Crutch Cane-Ca. 1915- A perfect crutch in coin silver, British hallmark, exotic wood shaft and a stopper ferrule. \$175-\$250



140. British Dress Cane-Ca. 1910- A British hallmarked

USD 100 - 150

140. British Dress Cane-Ca. 1910- A British hallmarked silver metal handle, probably Sheffield, some dents and dings, ebony shaft and a brass ferrule. H.- 1 ½ x 2" O.L.- 36 ¼" \$100-\$150



141. Horse Measure Cane-Ca. 1925- A one piece crutch

USD 150 - 250

141. Horse Measure Cane-Ca. 1925- A one piece crutch which holds a metal rule that folds out to measure the height of a horse, no liquid level, metal ferrule. O.L.- 37 ½" \$150-\$250



142. Telescope Cane-Ca. 1925- A three draw brass

USD 400 - 600

142. Telescope Cane-Ca. 1925- A three draw brass telescope in working condition, unsigned, figured cherry wood shaft and a stopper ferrule. H.- 5 x 3 ½" O.L.- 36 ½" \$400-\$600



143. Tippler's Stick- Ca. 1900- Silver metal top and

USD 150 - 250

143. Tippler's Stick- Ca. 1900- Silver metal top and matching collar, hardwood shaft, one glass vile to hold the liquid and a metal collar. H.- ¾ x 1" O.L.-35 ¼" \$150-250



144. Silver Dress Cane-Dated 1910- .800 silver

USD 75 - 125

144. Silver Dress Cane-Dated 1910- .800 silver hallmarked handle with a dated presentation, honey malacca shaft and a stopper ferrule. H.- 1 ¾" x 1 ¼" O.L.- 39" \$75-\$125



145. Large Silver Dress Cane-Ca. 1900- A large signed

USD 100 - 200

145. Large Silver Dress Cane-Ca. 1900- A large signed sterling handle with some dings, 1 ¼" honey malacca shaft and a brass ferrule. H.- 2 x 1 ½" O.L.- 2 x 1 ½" O.L.- 36 ¾" \$100-\$200

Antique Cane Auction-11 EasternTime



146. German Dress Cane-Late 19th Century- A German

USD 100 - 200

146. German Dress Cane-Late 19th Century- A German silver handle with a fancy coat of arms with dings and dents near the top, malacca shaft and a metal ferrule. H.- 2 ¾ x 1 ½" O.L.- 36 ¼" \$100-\$200



147. Sterling Dress Cane-Ca.1890- A hammered signed

USD 100 - 150

147. Sterling Dress Cane-Ca.1890- A hammered signed sterling handle with small dents and dings near the top, honey malacca shaft and a horn ferrule. H.- 2 ½ x 1 ¼" O.L.- 35 ¼" \$100-150



148. Silver Sword Cane- Ca. 1880- A large silver and

USD 600 - 800

148. Silver Sword Cane- Ca. 1880- A large silver and wood handle with a push button mechanism which holds a 25" blade, thick malacca shaft and a metal ferrule. H.- 4 ½" x 2" O.L.- 37 ¼" \$600-\$800



149. Snake Folk Art Cane-Ca. 1860- A well carved full

USD 250 - 350

149. Snake Folk Art Cane-Ca. 1860- A well carved full length snake cane which was probably a going ashore cane, carved fist and ball top, mahogany one piece shaft and a brass ferrule. H.- 1 ½ x 1 ¼" O.L.- 35 ¼" \$250-350



150. Silver Late Victorian Silver Cane-Ca. 1880- A one

USD 200 - 350

150. Silver Late Victorian Silver Cane-Ca. 1880- A one piece cast silver bladed handle which has a Victorian lady in handle folding an umbrella engraved on the front of the handle, exotic wood shaft and a horn ferrule. (Probably a bludgen cane) H.- 5 ½ x 1 ¾" O.L.- 39" \$200-350



151. Stag and Silver Dress Cane-Ca. 1890- A nice piece

USD 125 - 200

151. Stag and Silver Dress Cane-Ca. 1890- A nice piece of antler with five silver inlays, signed sterling collar, rosewood shaft and a metal ferrule. H.- 1 ¾ x 4 ½" O.L.- 35 ½" \$125-200



152. Indian Sword Cane- Mid 20th Century- A brass and

USD 300 - 500

152. Indian Sword Cane- Mid 20th Century- A brass and enameled elephant, white brass collar, exotic wood shaft and a 3" brass ferrule. H.- 4 x 3 ½" B- 20" O.L.- 35 ½" \$300-500



153. Dartmouth College Cane- Dated 1915- A nice example

USD 150 - 250

153. Dartmouth College Cane- Dated 1915- A nice example of a Dartmouth fraternity cane, carved throughout the shaft with the Dartmouth coat of arms, oak shaft and a metal ferrule. H.- 4 x 2 ½" O.L.- 35 ½" \$150-250

Antique Cane Auction-11 EasternTime



154. Patterson Mountain Souvenir Cane-Dated 1875- A

USD 150 - 200

154. Patterson Mountain Souvenir Cane-Dated 1875- A souvenir cane of a natural twigspur shaft with silver overlays on the handle and atop, signed sterling collar with "From the top of Patterson Mountain 1875", the natural branch shaft retains most of its' original bark and metal ferrule. O.L.- 36 1/2" \$150-250



155. Native American Folk Cane- Ca. 1930- A well

USD 150 - 250

155. Native American Folk Cane- Ca. 1930- A well carved burl one-piece cane which is signed Cherokee, NC, some of the letters are missing but it can still be read and never had a ferrule. H.- 6 1/2 x 4 1/2" O.L.- 36 1/2" \$150-250



156. Gold Dress Cane-Dated 1894- A signed Simmons

USD 200 - 300

156. Gold Dress Cane-Dated 1894- A signed Simmons ornate gold handle in fine condition with an 1894 presentation atop, these handles are a 14 kt gold overlay, ebony shaft and a metal ferrule. H.- 1 1/4 x 1 1/2" O.L.- 35 3/4" \$200-300



157. Mountain Goat Horn Cane-1900- A swirled ram horn

USD 150 - 250

157. Mountain Goat Horn Cane-1900- A swirled ram horn with its' original patina, black horn collar, twigspur shaft and a metal ferrule. H.- 4 1/2 x 5" O.L.- 37" \$150-250



158. 14 K Presentation Cane-Dated 1919- An exotic wood

USD 150 - 250

158. 14 K Presentation Cane-Dated 1919- An exotic wood presentation crutch with a 14 kt gold collar with a presentation from the staff of "C.A.C. Rockefeller", nice condition and a horn ferrule. H.- 4 3/4 x 4 3/4" O.L.- 36 1/2" \$150-250



159. Court Cane- Ca. 1770- A pewter handle which is

USD 500 - 600

159. Court Cane- Ca. 1770- A pewter handle which is cast in concentric circles which has a small piece missing from the bottom circle, original brass lanyard holder, stepped malacca shaft and a 3" crown ferrule with a small pike at it's tip. H.- 3/4 x 1 1/4" O.L.- 40" \$500-600



160. Horn Dress Cane-Ca. 1880- An original patina horn

USD 200 - 300

160. Horn Dress Cane-Ca. 1880- An original patina horn handle, signed gold-filled collar, exotic wood shaft and a horn ferrule. H.- 4 1/2 x 3" O.L.- 36 1/2" \$200-300



161. Horn Dress Cane- Ca. 1900- A nice twisted goat

USD 100 - 150

161. Horn Dress Cane- Ca. 1900- A nice twisted goat horn hallmarked coin silver collar with dents and dings, worn ebony shaft and no ferrule. H.- 4 x 2 1/2" O.L.-35 1/4" \$100-150

Antique Cane Auction-11 EasternTime



162. Natural Country Cane-Dated 1898- A small silver

USD 150 - 250

162. Natural Country Cane-Dated 1898- A small silver handle atop which has an 1898 presentation, two coin silver eyelet covers, twisted original shaft and a stopper ferrule. O.L.- 36 ¼" \$150-250



163. Group of Six Various Folk Art Canes- A.L.- 40"

USD 150 - 300

163. Group of Six Various Folk Art Canes- A.L.- 40" \$150-\$300



164. Group of Six Folk Art and Contemporary Canes-

USD 150 - 300

164. Group of Six Folk Art and Contemporary Canes- A.L.- 38" \$150-300



165. Group of Six Folk Art and Contemporary Canes-

USD 150 - 300

165. Group of Six Folk Art and Contemporary Canes- A.L.- 53" \$150-300



166. Group of Five Folk Art and Contemporary Canes-

USD 150 - 300

166. Group of Five Folk Art and Contemporary Canes- A.L.-50" \$150-300



167. Group of Five Folk Art and Contemporary Canes-

USD 150 - 300

167. Group of Five Folk Art and Contemporary Canes- A.L.-53" \$150-300



168. Alligator/Frog Cane- Ca. 1910- A carved orangewood

USD 200 - 300

168. Alligator/Frog Cane- Ca. 1910- A carved orangewood shaft with a full length alligator and two standing frogs, original patina and a metal ferrule. O.L.- 35" \$200-300



169. 1934 World's Fair Cane- which is in original

USD 100 - 200

169. 1934 World's Fair Cane- which is in original painted condition and a metal ferrule. H.- 3 ¼ x 2" O.L.- 35 ½" \$100-200

Antique Cane Auction-11 EasternTime



170. Walrus Carved Dog Cane- Late 19th Century- A

USD 200 - 300

170. Walrus Carved Dog Cane- Late 19th Century- A standing dog carved from a tusk of a walrus, hardwood shaft and a metal ferrule. H.- 5 ¼ x 1 ¼" O.L. 33 ¾" \$200-300



171. Bone Dress Cane- Ca. 1890- A carved bone handle

USD 200 - 300

171. Bone Dress Cane- Ca. 1890- A carved bone handle with various black horn inserts, a presentation silver metal collar "Burling Hallock" fully carved hardwood shaft and a 2" brass ferrule. H.- 2 x 1 ½" O.L.- 34" \$200-300



172. Political Kazoo Cane-Late 19th Century- These

USD 200 - 300

172. Political Kazoo Cane-Late 19th Century- These canes were made by Winfield Manufacturing company in Warren, Ohio, the horn is inscribed "Prosperity-Protection-Patriotism", this is a William McKinley noisemaker, probably used at the convention and is completely made of tin. O.L.- 33" \$200-300



173. Nautical Bone Cane- Ca. 1880- A diminutive whale

USD 100 - 200

173. Nautical Bone Cane- Ca. 1880- A diminutive whale bone naughty leg, silver metal collar, small flexible shaft and a metal collar. H.- 2 ¼ x ¾" O.L.- 35 ¾" \$100-200



174. Seminole Totem Cane- Ca. 1925- A one piece carved

USD 200 - 300

174. Seminole Totem Cane- Ca. 1925- A one piece carved Native American cane with sharks, Indian maidens, lobsters, alligators, boats and other various animals and flowers, some original paint on this totem cane and a horn ferrule. O.L.- 34" \$200-300



175. Hiking Stick with Telescope- Early 20th Century- A

USD 100 - 150

175. Hiking Stick with Telescope- Early 20th Century- A solid brass telescope with no draw and one lens, 16 different attached hiking badges, natural hardwood shaft and a metal pike hiking ferrule. H.- 2 x 2" O.L.- 33 ½" \$100-150



176. Shooter's Seat Cane-Ca. 1885- A nice early example

USD 150 - 250

176. Shooter's Seat Cane-Ca. 1885- A nice early example of the genre of cane with iron attachments and breathable wicker seat, bamboo shaft and an iron ferrule. O.L.- 31" \$150-250



177. Inuit Walrus Cane- Ca. 1910- A stylized animal

USD 400 - 600

177. Inuit Walrus Cane- Ca. 1910- A stylized animal carved from a tusk with walrus and horn spacers, thick ebony shaft and a metal ferrule. H.- 3 ½ x 3" O.L.- 37" \$400-600

Antique Cane Auction-11 EasternTime



178. Folk Art Terrier Carved Cane- Ca. 1900- A carved

USD 300 - 400

178. Folk Art Terrier Carved Cane- Ca. 1900- A carved and stained terrier with glass eyes and stained decoration, hard maple shaft and never had a ferrule. O.L.- 36" \$300-400



179. Inuit Totem Cane- Early 20th Century- A walrus

USD 200 - 300

179. Inuit Totem Cane- Early 20th Century- A walrus tusk carved handle, shellac hardwood shaft with various human and animal figures and a metal ferrule. H.- 4 x 1 3/4" O.L.- 36" \$200-300



180. Nautical Whale Cane- Ca. 1865- A carved whale's

USD 600 - 800

180. Nautical Whale Cane- Ca. 1865- A carved whale's tooth with fist and baton, collared sleeve, painted collar separators, hardwood shaft and metal ferrule. H.- 1 1/2 x 5" O.L.- 35" \$600-800



181. Sterling Bulldog Cane- Ca. 1925- A signed high

USD 400 - 600

181. Sterling Bulldog Cane- Ca. 1925- A signed high relief sterling bulldog with the initials "G.D." exotic wood shaft and horn ferrule. H.- 2 1/4 x 3" O.L.- 36 1/4" \$400-600



182. Dog Sword Cane- 20th Century- A silver plated

USD 500 - 600

182. Dog Sword Cane- 20th Century- A silver plated hound which is signed but unreadable, two silver metal collars, 28" push and lock four-sided blade, exotic wood shaft and horn ferrule. H.- 3 1/2 x 2 1/4" O.L.- 36" \$500-600



183. Iowa Folk Corn Cane- Early 20th Century- A natural

USD 200 - 300

183. Iowa Folk Corn Cane- Early 20th Century- A natural bamboo shaft with carved horn handle and two ears of corn applied to the shaft and no ferrule. O.L.- 35" \$200-300



184. Porcelain Cane Stand- 20th Century- A blue and

USD 150 - 300

184. Porcelain Cane Stand- 20th Century- A blue and white Asian cane stand which would hold around 12 canes. H- 16" D- 8 1/2" \$150-\$300



185. Pottery Cane Stand-20th Century- An earthenware

USD 150 - 300

185. Pottery Cane Stand-20th Century- An earthenware cylinder cane stand with paint decoration. It will hold around 12 canes. H- 19 1/2" D- 9 1/2" \$150-\$300

Antique Cane Auction-11 EasternTime



186. Oak Cane Stand- Ca. 1920- A two tier cane stand

USD 250 - 400

186. Oak Cane Stand- Ca. 1920- A two tier cane stand with six divisions which would hold about 40-50 canes, there is a new metal drip lower pan for umbrellas 26 ½ x 10 ½ x 23" \$250-\$400



187. Oak Corner Cane Stand- Ca. 1910- A corner cane

USD 250 - 400

187. Oak Corner Cane Stand- Ca. 1910- A corner cane stand with barley twist columns, pommel feet, will hold 35-40 canes, 27 x 21 x 15" \$250-400



188. Porcelain Cane Stand-20th Century- A pottery cane

USD 150 - 300

188. Porcelain Cane Stand-20th Century- A pottery cane stand with a brown glaze and many Asian characters inscribed throughout, will hold 15-20 canes H-23" D- 10" \$150-300



189. Group of Seven Folk Art and Contemporary Canes-

USD 150 - 300

189. Group of Seven Folk Art and Contemporary Canes- A.L.- 50" \$150-300



190: Four Assorted Canes

USD 200 - 400

Early 20th Century- One silver bird, two Asian bamboo crooks and a folk art twist. \$200-\$400



191: Five Folk Art Canes

USD 200 - 400

Early 20th Century- \$200-\$400



192: Five Folk Art Canes

USD 200 - 400

Early 20th Century- \$200-\$400



193: Five Folk Art Canes

USD 200 - 400

Early 20th Century- \$200-\$400
